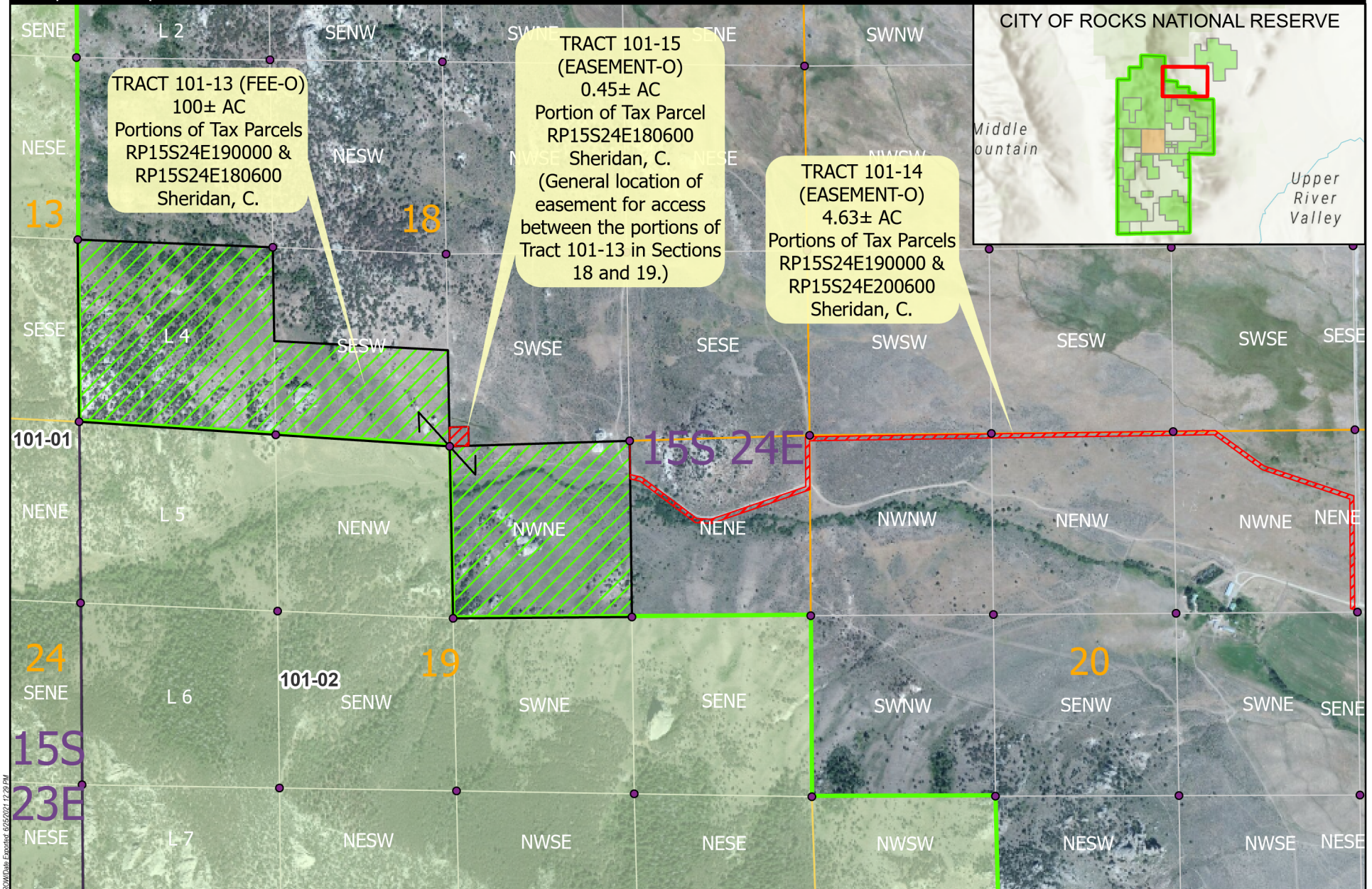


CITY OF ROCKS NATIONAL RESERVE

Proposed Acquisition Tracts 101-13, 101-14 and 101-15

National Park Service
U.S. Department of the Interior



Sources: Land records from NPS, BLM, and County of Cassia, ID. Image Credits: Esri, MAXAR, Earthstar Geographics, CNES/Airbus DS, & the GIS User Community.
Use Limitations: Map features from all sources have been adjusted to achieve a best fit registration to ownership parcels. While great care was taken in this process, maps from different sources rarely agree as to the precise location of geographic features. Relative positioning of map features results from combining different map sources without field "ground truthing". This map is not of survey quality and is not intended to be used for survey, engineering or legal purposes.

