



Environmental Assessment Yellow Wolf Trail



Public Open House
February 6, 2009



NPS Centennial Initiative

The National Park Service Centennial Initiative is a 10-year effort to prepare national parks for another century of conservation, preservation, and enjoyment, by the agency's 100th anniversary in 2016.

"Our system of national parks has been termed the 'Best idea America ever had.' We intend to honor that compliment and make America's parks shine."

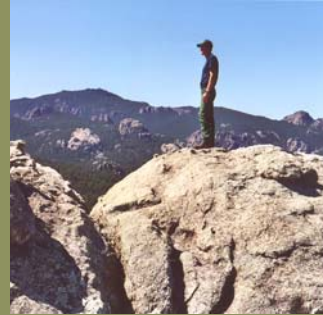
- NPS Director Mary Bomar



Mount Rushmore Centennial Project Yellow Wolf Loop Trail

The trail would be a backcountry hiking loop system around Mount Rushmore with scenic vistas, spur trails and interpretive wayside exhibits

- Approximately 7-10 miles in length
- Provide visitor access to areas of significant natural resources
- Incorporate and rehabilitate 3 miles of existing trails
- Proposed for foot traffic and backcountry standards



Hiker on the summit of Old Baldy



Objectives of Proposal

The Memorial proposes to add a backcountry trail system which improves the visitor experience by providing opportunities for:

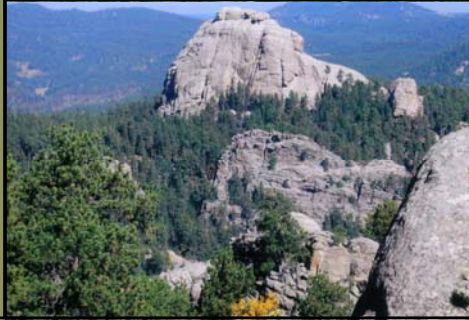
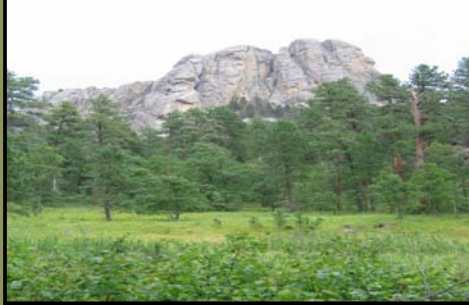
- Appreciation of the cultural and natural resources
- Potential guided and self-guided tours
- Educational and research opportunities
- Beneficial outdoor leisure activities
- Appreciation for environmental stewardship
- Multi-generational and multi-cultural experiences
- Opportunities to further develop partnerships





Trail Highlights

- Starling Basin
- Old Baldy Mountain
- Old Growth Forest
- Wetlands
- Granite Formations
- Scenic Vistas



Trail Features

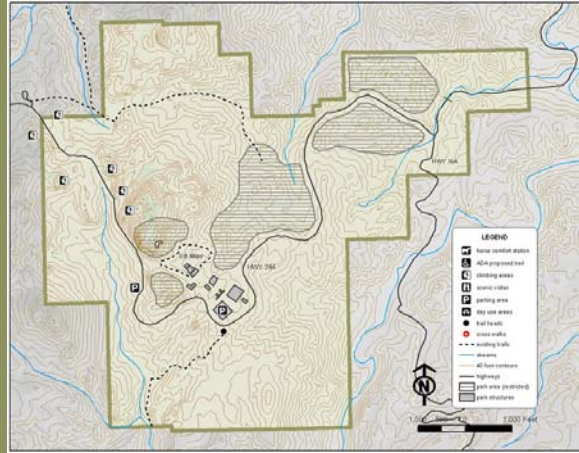
- Trailheads
- Day use areas with vaulted toilets and picnic tables
- Trail signs
- Rehabilitation of Blackberry Trail
- Use of native materials. Log checks, rock checks, and water bars
- Elevated walkways in wetland areas





Alternative One: No Action

- No new trails would be constructed
- Rehabilitate the Blackberry Trail

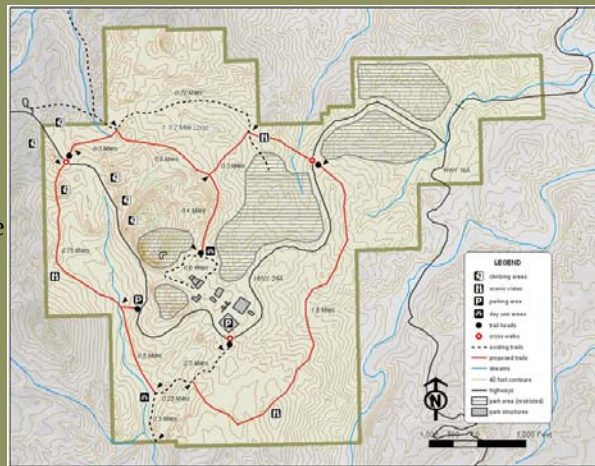


Alternative Two: Single Loop Trail

- One large loop would be constructed (app. 4.3 miles)
- Total length of trails: 6.7 miles
- No new parking will be needed

Trail Features

- 5 Trailheads
- 3 Scenic Vistas
- 2 Day Use Areas
- 3 Crosswalks



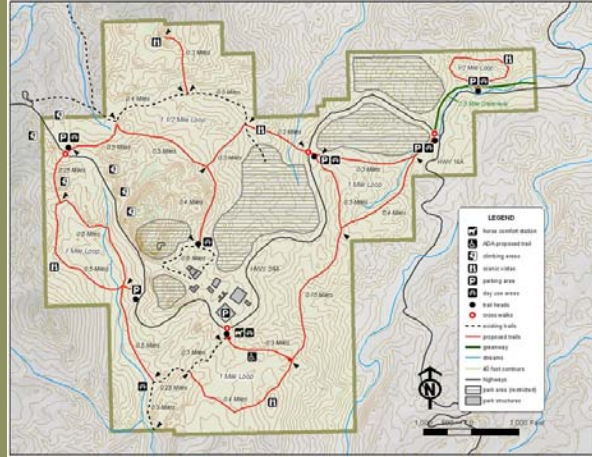


Alternative Three: Multi-Loop Trail

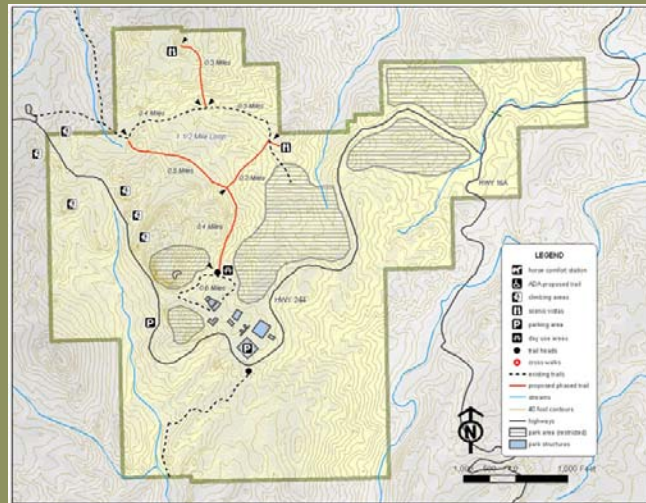
- Total length of trails: 9.8 miles
- 5 phases of construction

Trail Features

- 7 Trailheads
- 5 Scenic Vistas
- 7 Day Use Areas
- 6 Parking Areas
- Horse Comfort Station
- 6 Emergency Access Points
- Possible connection to Keystone



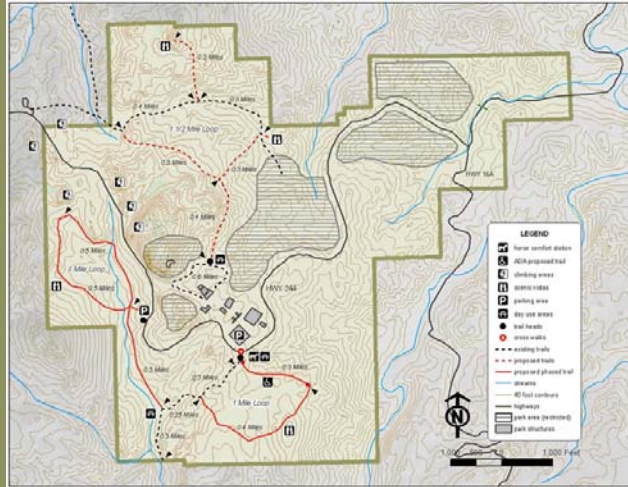
Alternative Three: Phase One



Establish the north trail segments, trailhead and day use at Presidential Trail



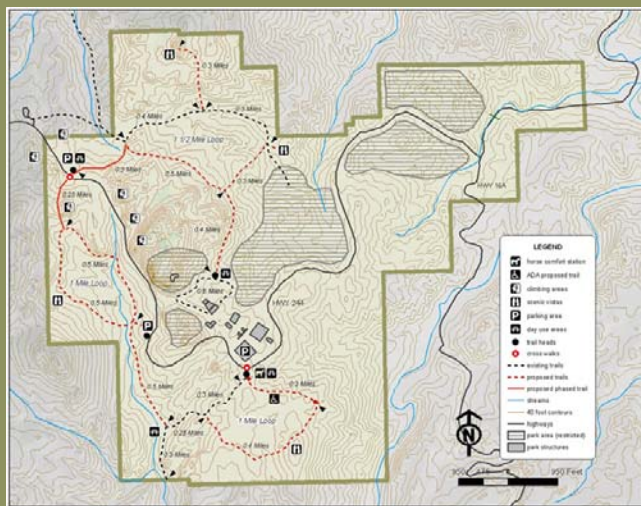
Alternative Three: Phase Two



Establish Starling Basin trail and rehabilitate Blackberry Trail, establish Lot 7 underpass and trailhead, Profile trailhead, and ADA short trail



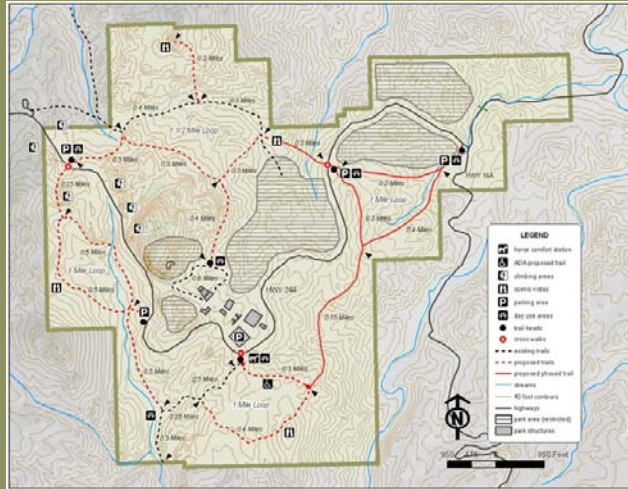
Alternative Three: Phase Three



Establish west crosswalk, trailhead, parking and connector trails



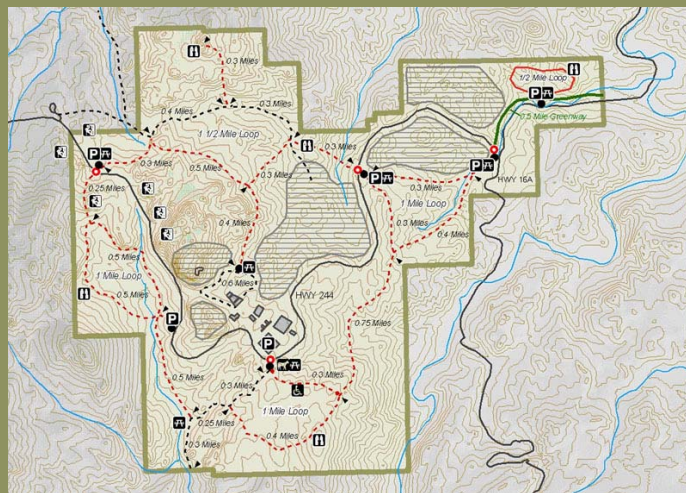
Alternative Three: Phase Four



Establish east crosswalk, trailhead, parking and connector trails, trailhead south of 244/16A intersection



Alternative Three: Phase Five



Establish greenway to east boundary, 244/16A crosswalk, east boundary parking, northeast trail and entrance trailhead

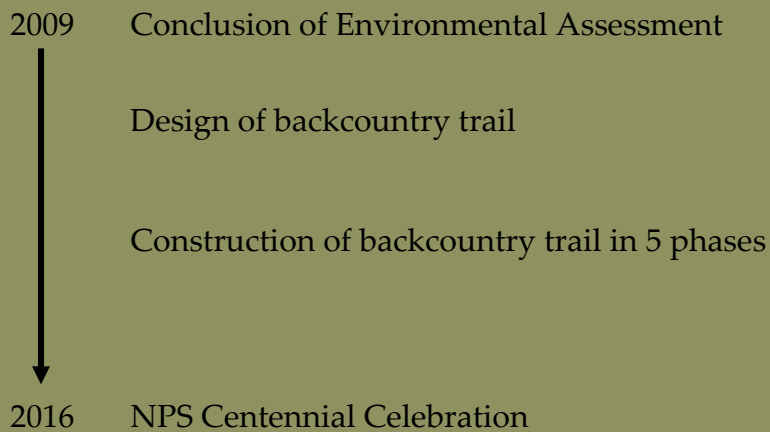


Interpretive Topics

- Old Growth Forest
- Vegetation Diversity
- Wildflowers
- Cultural History of the Black Hills
- American Indian History
- Wildlife of the Black Hills
- Black Hills Geology



Project Timeline





Backcountry Trail Naming Contest

Mount Rushmore proposes to hold a trail naming contest with school children across South Dakota to help name the trail system and the smaller loops within the system.

More information will be available during the design and construction phases of the project.



Public Involvement

The memorial seeks interested organizations and individuals to help make this project a reality. Support with trail construction, partnerships, and trail maintenance will be important to the success of the backcountry trail.

More information will be available during the design and construction phases of the project.

Mount Rushmore National Memorial

