



FINDING OF NO SIGNIFICANT IMPACT

Management Plan

Wolf Trap National Park for the Performing Arts Vienna, Virginia

The National Park Service (NPS), in cooperation with the Wolf Trap Foundation (Foundation), proposes a Management Plan and environmental assessment (Plan) for Wolf Trap National Park for the Performing Arts (Park) in Vienna, Virginia to evaluate improvements that will enhance visitor experience, access, circulation, and expanded amenities. The Park's purpose is to provide opportunities to experience live performances, related educational programs, and associated recreation in a pastoral setting within the National Capital area.

The Plan amends the Wolf Trap National Park for the Performing Arts 1997 Final General Management Plan (GMP). This Plan considers vehicle and pedestrian circulation, including accessibility and walkway treatments; visitor and patron facilities, including the Main Gate and Filene Center, Stand A, and other support facilities; interpretation and education; administration, operations and safety; and other existing features that are retained in the Plan. This follows the NPS "Planning Portfolio" construct, consisting of a compilation of individual plans, studies, and inventories, which together guide park decision making. The planning portfolio enables the use of targeted planning products (such as this one) to meet a broad range of park planning needs, a change from the previous NPS focus on stand-alone general management plans.

The 1997 GMP provides management guidance for concerns related to patron and visitor accommodations and services; parking and traffic circulation; impacts on the natural, cultural, and socioeconomic environments; interpretation of the performing arts; and appropriate locations and levels of use by patrons and visitors. In order to meet the proposed action's purpose and need, the Plan describes changes to management guidance related to circulation; parking and pedestrian corridors; visitor and patron facilities; administration, operations, and safety; and education and interpretation.

The purpose of the proposed action is to update the GMP in a manner that protects park resources and retains the park's cultural landscape, outdoor recreation opportunities, and performing arts experiences in an outdoor setting that achieves the following:

- Improve accessibility, safety, and security features to current industry standards wherever possible
- Create amenities expected by visitors, patrons attending events, and artists
- Address long-documented site challenges, such as transportation access, pedestrian circulation, and stormwater management
- Address deferred maintenance areas
- Improve the visitor and patron experience and expand opportunities for year-round park use

An amendment to the GMP is needed to address the following issues:

- The Filene Center has outdated amenities that do not meet current industry standards and/or expectations
- Facilities do not meet accessibility standards

- Facility configuration does not support current security/operational needs
- Children's Theatre-in-the-Woods area lacks needed support facilities, such as a comfort station, shelter, and an appropriate kiosk
- Amenities, such as food service and restrooms, do not meet current capacity needs or expectations of visitors and patrons
- Patron and visitor queues for arrival and security screening leave them exposed to the elements

The following existing features would be retained in their current condition in the proposed Plan and decision from the 1997 GMP would still apply:

- All other structures and buildings
- Vehicle access points from Trap Road
- Pedestrian tunnel below Trap Road
- Gil's Hill and Encore Hill field parking areas, and Lots 1, 3, and 4
- All other internal roadways
- Lawn seating at the Filene Center

PUBLIC AND AGENCY INVOLVEMENT

The NPS involved the public during the NEPA process to provide an opportunity for the public to comment on the proposed project. The NPS held one public scoping meeting during the 30-day public scoping comment period, at which time the public, agencies, and interested parties were invited to submit comments on the proposed project. The NPS distributed early consultation on the Plan with Fairfax County, the National Capital Planning Commission (NCPC), and the Virginia Department of Transportation. The NPS initiated consultation with the Virginia Department of Historical Resources (DHR) and Tribal Historic Preservation Offices (including Mattaponi Indian Tribe; Nottoway Indian Tribe of Virginia; Cheroenhaka Nottoway Nation; Patowomeck Indian Tribe of Virginia; Pamunkey Indian Tribe; Upper Mattaponi Indian Tribe; Rappahannock Tribe; Nansemond Indian Nation; Chickahominy Indian Tribe; Chickahominy Tribe Eastern Division; Monacan Indian Nation; Catawba Indian Nation; Citizens Potawatomi Nation (Oklahoma); and the Delaware Nation) under Section 106 of the National Historic Preservation Act. NPS held two Section 106 consulting parties meetings, through which consulting parties reached a consensus that the Plan will result in adverse effects on historic properties. The consulting parties have negotiated a Programmatic Agreement to identify specific stipulations and measures to mitigate the adverse effect. The NPS initiated Section 7 consultation via the U.S. Fish and Wildlife Service and ongoing consultation would occur during implementation of the proposed action. NCPC provided Concept Review and Draft Review comments on the Plan. The NPS completed an environmental assessment (EA) that provides an analysis of the environmental consequences of the alternatives considered for the resource protection and visitor accommodation projects. This EA was prepared in accordance with National Environmental Policy Act of 1969, as amended (NEPA), its implementing regulations by the Council on Environmental Quality (40 CFR 1500-1508), and Director's Order 12, Conservation Planning, Environmental Impact Analysis and Decision-Making, and accompanying Handbook.

ALTERNATIVES CONSIDERED AND SELECTED

The EA analyzed two alternatives: (A) no action, and (B) Management Plan. Based on the analysis presented in the EA, the NPS selected Alternative B – Management Plan (the NPS Preferred Alternative) for implementation. The selected alternative is described on pages 13-20 of the EA. The selected alternative will reconfigure vehicle and pedestrian circulation; enhance and add visitor and patron facilities; enhance interpretation and education; and adjust administration, operations and safety actions. The following summarizes Alternative B- Management Plan:

Vehicle and Pedestrian Circulation - Main Circle Road will be reconfigured to accommodate the additional traffic lane, the expanded Main Gate and plaza, removal of parking on the Main Circle, and bus turning movements required to navigate Main Circle Road, while still maintaining the striking view of the Filene Center on the approach. Main Circle Road will be widened from two to three lanes by adding a bypass lane for approximately 800 feet around the Main Circle for vehicles needing to access Lot 4, Lot 1, or the rear of the Filene Center or for emergency vehicles. A new parking area with approximately 65 accessible spaces will be constructed along the south side of Main Circle Road. The vegetated Main Circle will be reduced by approximately 33 percent and replanted as a native plant meadow.

The existing pick-up and drop-off zone for the Wolf Trap Express Shuttle will remain along Main Circle Road; the Foundation will continue to coordinate with Fairfax County to provide shuttle services to Metrorail stations, including a potential shuttle connection to the Metrorail's Silver Line. A new formalized rideshare drop-off and loading zone will be added to the West Lot.

The Plan will provide new accessible connections within the park. Elevators will be installed in the Stand A and South Gate Service Stand buildings to improve accessibility between the lower and upper levels of the Filene Center. The Filene Center seating will be reorganized to improve circulation through the addition of central aisles. Existing paths to the Meadow Pavilion and Children's Theatre-in-the-Woods will be made accessible to meet the Architectural Barriers Act Accessibility Standard (ABAAS).

Pathways along the north-south entry corridor between Gil's Hill and the Filene Center will be widened from their current width of 15 feet to an estimated 20 feet. A new pedestrian connection will extend the existing sidewalk along Main Circle Road, install a sidewalk along the southern side of Barn Road, add a pedestrian path to Gil's Road, and add a new tunnel under Main Circle Road at Barn Road, which will replace an at-grade pedestrian crossing of Main Circle Road. Trails in the park will be realigned in areas that have suffered erosion or other design issues, and one trail bridge will be replaced.

Queuing areas for Filene Center performances along Main Circle Road for approximately 225 feet and the primary north-south access from Gil's Hill for approximately 125 feet will include walkway treatments to help protect patrons and visitors from the elements.

Visitor and Patron Facilities - The Main Gate plaza will be expanded and enhanced by extending the canopy to the edge of the new roadway configuration, an increase of approximately 50 percent of the existing canopy structure. The plaza area, including canopy, will increase from 50 feet from the curb to 85 feet from the curb. The height of the new structure will be limited so as to maintain the striking view of the Filene Center one encounters walking up the hill toward the Main Gate.

Stand A, with a current footprint of 4,600 square feet, will be replaced with a new structure that is universally accessible, connects the plaza, middle, and lower Filene Center areas with two new elevators, and includes concession services both inside and outside the ticketed venue. The new building will also include new restrooms, a deck area/lounge, and a plaza area. The enclosed building of Stand A will be a maximum of 9,000 square feet and the outdoor covered area will be a maximum of 14,000 square feet, with a total footprint of approximately 23,000 square feet.

The South Gate Service Stand, with a current footprint of 1,460 square feet, will be replaced with two new buildings that will provide concession services, restrooms, covered security screening, a picnic area, and elevators providing universal access. The enclosed building and the outdoor covered area of the South Gate Service Stand will be up to approximately 9,000 square feet each, with a total footprint of approximately 18,000 square feet.

Improvements away from the Filene Center include the addition of universally accessible picnic areas between Gil's Hill and the Filene Center. The existing Meadow Pavilion will be replaced outside the floodplain of Wolf Trap Creek if the structure is substantially damaged by weather or flooding. A new Children's Theatre-in-the-Woods Pavilion will add temporary restroom facilities in the short term. A new

kiosk and temporary restrooms will be placed in the vicinity of the existing Meadow Kiosk, which will be removed concurrently. The NPS and the Foundation will monitor conditions to determine if permanent facilities are needed at this location.

Interpretation and Education - A new visitor information kiosk of up to 400 square feet will be added along Barn Road to the north of the Barn. A comprehensive signage and wayfinding system will be developed.

Administration, Operations, and Safety -The Associates Building will be rehabilitated or replaced in-kind with updated offices, a catering kitchen, and a restroom. The adjacent Interpretation Staff Offices Trailer will be removed. The existing Cabin will be rehabilitated to support services, such as the U.S. Park Police (USPP), a visitor contact station, or usher space. Security apparatus and safety equipment will be added to the Filene Center entrance (Main Gate).

All building projects will strive to incorporate sustainable development practices. NPS and the Foundation will implement techniques to reduce the amount of runoff into Wolf Trap Creek and other locations and support streambank stabilization. In order to offset the increase in impervious surfaces, stormwater management facilities will be installed and could include the introduction of bioretention areas, the use of permeable pavement, or other techniques. The West and East Lots will incorporate stormwater management improvements. Other potential strategies for exploration include the use of renewable energy sources and sustainable or recycled materials in the design and construction. Renewable energy sources could include solar panels within the park. Green roofs could also receive consideration.

RATIONALE FOR DECISION

The NPS selected Alternative B for implementation because it best meets the purpose and need of the Management Plan. It provides comprehensive guidance for accessibility, security, visitor amenities, addressing deferred maintenance areas, improving ecological function of waterways, and further enabling year-round access to the park. Designs proposed in Alternative B minimize impacts to park natural and cultural resources and improve outdoor recreation opportunities and performing arts experiences for all visitors.

MITIGATION MEASURES

The NPS places a strong emphasis on avoiding, minimizing, and mitigating potentially adverse environmental impacts and effects on cultural resources. Mitigation measures for affected resources are outlined in the EA and are presented as Attachment A.

WHY THE SELECTED ALTERNATIVE WILL NOT HAVE A SIGNIFICANT IMPACT

As documented in the EA, the selected alternative has the potential for adverse and beneficial impacts on cultural landscapes (see EA pages 22-27); archeological resources (see EA pages 28-29); and visitor use and experience (see EA pages 30-37). The NPS has determined that the selected alternative can be implemented without significant adverse effects, as defined in 40 CFR § 1508.27.

The selected alternative will have adverse impacts on the Wolf Trap National Park for the Performing Arts cultural landscape as a result of the reconfiguration of the Main Circle Road entry, including the addition of walkway treatments; replacement of Stand A and expansion of Stand B; removal of contributing woodlands; and the addition of picnic decks and walkway treatments in the core farm area through the changes in the setting, circulation, vistas and views, and spatial relationships within the site. The alternative will mitigate adverse impacts on the cultural landscape by using materials (e.g., wood, stone) and a design that are compatible with the historic character of the landscape. The bridge replacement, surface materials for the updated walkways, rehabilitation of the Associates Building and Cabin, and small-scale improvements (e.g., signage) will be undertaken in a manner that is consistent with the *Secretary of the Interior's Standards for the Treatment of Historic Properties and Guidelines for*

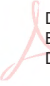

the Treatment of Cultural Landscapes. Consultation with the Virginia SHPO and ASSOCIATED TRIBESs will occur as specific projects are designed and implemented.

Implementation of the selected alternative will result in detectable adverse impacts on archeological resources. The project's area of potential effect (APE) has areas with a high potential to contain undocumented precontact and historic archeological deposits. Ground disturbance related to the proposed project elements could damage or displace unknown archeological resources and result in a loss of integrity of the archeological resource, resulting in an adverse impact. In order to avoid and minimize potential adverse impacts, the NPS will undertake archeological investigation for any areas of potential ground disturbance with moderate to high archeological potential. Such investigations will include, at a minimum, pedestrian inspection, close-interval shovel testing, and/or mechanical removal of thick fill overburdens to test potential stable, buried surfaces, and associated geoarcheological investigation to identify areas with the greatest chance of containing buried paleosols. All proposed archeological investigations will be planned in consultation with the NPS and the Virginia SHPO and Associated Tribes. A protocol for the unanticipated discovery of cemeteries or human remains will be developed for the construction contractor. If any Native American burials, cemeteries, or funerary objects are encountered, NPS will contact federally recognized Tribes with affiliation in Virginia, in accordance with the Native American Graves Repatriation Act (NAGPRA). NPS will also avoid disturbing known archeological resources during design and construction to the extent practicable. During the construction phase, NPS will also minimize ground-disturbing activities to the extent practicable, including using existing vehicle circulation areas and construction methods that minimize land disturbance. Areas exposed during construction will be re-vegetated as native forest, turf, or native meadow, as compatible with the surrounding conditions, or otherwise stabilized following the completion of construction.

The selected alternative will result in beneficial impacts on visitor use and experience. The overall changes to vehicular and pedestrian circulation (including walkway treatments, the addition of elevators, and new parking and vehicle lanes) will improve emergency response, increase accessibility, and reduce bottlenecks. Changes to the Filene Center seating, the Main Gate, and improved wayfinding will improve the accessibility to all the park's facilities, both enhancing the visitor experience and dramatically improving security. The replacement of Food Service Stand A, the construction of a new South Gate Service Stand, the enhancements at Children's Theatre-in-the-Woods, the installation of accessible picnic areas, and realigned trails will result in new visitor amenities and an improved experience.

CONCLUSION

As described above, the selected alternative does not constitute an action meeting the criteria that normally requires preparation of an environmental impact statement (EIS). The selected alternative will not have a significant effect on the human environment in accordance with Section 102(2)(c) of NEPA. Based on the foregoing, it has been determined that an EIS is not required for this project and, thus, will not be prepared.

Recommended:	KENNETH BIGLEY	 Digitally signed by KENNETH BIGLEY Date: 2022.01.03 11:34:37 -05'00'	<u>01/03/2022</u>
	Ken Bigley Acting Superintendent Wolf Trap National Park for the Performing Arts Region 1 – National Capital Area		Date
Approved:	KIMBERLY HALL	 Digitally signed by KIMBERLY HALL Date: 2022.01.04 16:10:40 -05'00'	
	Kym A. Hall Area Director Region 1 - National Capital Area		Date

Documents appended to the FONSI include:

- Appendix A: Mitigation measures
- Appendix B: Non-impairment documentation
- Appendix C: Public comment responses
- Appendix D: Section 106 coordination letters
- Appendix E: Programmatic Agreement
- Appendix F: Errata Sheet

APPENDIX A: MITIGATION MEASURES

Cultural Landscapes

The selected alternative will minimize impacts on the cultural landscape by avoiding much of the woodlands and paved and turf parking areas, as well as retaining and continuing operation of multiple contributing buildings and structures. The NPS and Foundation will design new features to fit within the size, scale, design, materials, color, and texture of historic elements to which the feature will be spatially related. The alternative will mitigate adverse impacts on the cultural landscape by using materials (e.g., wood, stone) and a design that are compatible with the historic character of the landscape. The bridge replacement, surface materials for the updated walkways, rehabilitation of the Associates Building and Cabin, and small-scale improvements (e.g., signage, benches) will be undertaken in a manner that is consistent with the *Secretary of the Interior's Standards for the Treatment of Historic Properties* and *Secretary of the Interior's Standards Guidelines for the Treatment of Cultural Landscapes*. If contributing buildings or structures within the site are altered, removed, or replaced, the NPS and the Foundation will conduct Historic American Buildings Surveys (HABS) to record the resources. Consultation with the Virginia SHPO and Associated Tribes will occur as specific projects are designed and implemented.

Archeological Resources

The NPS will avoid and minimize potential adverse impacts on archeological resources by undertaking archeological investigation for any areas of potential ground disturbance with moderate to high archeological potential. Such investigations will include, at a minimum, pedestrian inspection, close-interval shovel testing, and/or mechanical removal of thick fill overburdens to test potential stable, buried surfaces, and associated geoarcheological investigation to identify areas with the greatest chance of containing buried paleosols. All proposed archeological investigations will be planned in consultation with NPS, the Virginia SHPO, and the Associated Tribes.

The potential for encountering historic burials or cemeteries is considered low, while the potential for encountering precontact burials or cemeteries is considered moderate. Therefore, a protocol for the unanticipated discovery of cemeteries or human remains shall be developed for the construction contractor. If any Native American burials, cemeteries, or funerary objects are encountered, NPS will contact federally recognized Tribes with affiliation in Virginia, in accordance with NAGPRA.

NPS will also avoid disturbing known archeological resources during design and construction to the extent practicable. During the construction phase, NPS will also minimize ground-disturbing activities to the extent practicable, including using existing vehicle circulation areas and construction methods that minimize land disturbance.

Visitor Use and Experience

In order to minimize impacts on visitor use and experience during construction, NPS and the Foundation will, to the extent practicable, construct facilities during months with limited performances.

APPENDIX B: NON-IMPAIRMENT DETERMINATION

By enacting the National Park Service (NPS) Organic Act of 1916 (Organic Act), Congress directed the U.S. Department of the Interior and the NPS to manage units “to conserve the scenery and the natural and historic objects and wildlife therein and to provide for the enjoyment of the same in such a manner and by such a means as will leave them unimpaired for the enjoyment of future generations” (54 USC 100101). Congress reiterated this mandate in the Redwood National Park Expansion Act of 1978 by stating that NPS must conduct its actions in a manner that will ensure no “derogation of the values and purposes for which these various areas have been established, except as may have been or shall be directly and specifically provided by Congress” (54 USC 100101).

NPS Management Policies 2006, Section 1.4 explains the prohibition on impairment of park resources and values. While Congress has given the Service the management discretion to allow impacts within parks, that discretion is limited by the statutory requirement (generally enforceable by the federal courts) that the National Park Service must leave park resources and values unimpaired unless a particular law directly and specifically provides otherwise. This, the cornerstone of the Organic Act, establishes the primary responsibility of the National Park Service. It ensures that park resources and values will continue to exist in a condition that will allow the American people to have present and future opportunities for enjoyment of them.

This determination on impairment has been prepared for the selected alternative described in this Finding of No Significant Impact. An impairment determination is made for the resource topics of cultural landscapes and archeological resources. These resources are considered fundamental to Wolf Trap National Park for the Performing Arts. An impairment determination is not made for visitor use and experience because impairment findings relate back to park resources and values, and these impact areas are not generally considered to be park resources or values according to the Organic Act and cannot be impaired in the same way that an action can impair park resources and values. This determination on impairment has been prepared for the action alternative described in Chapter 2 of the Wolf Trap National Park for the Performing Arts Management Plan EA.

Cultural Landscapes

The APE contains the Wolf Trap National Park for the Performing Arts Cultural Landscape. Implementing the selected alternative will have adverse impacts on the Wolf Trap National Park for the Performing Arts cultural landscape as a result of the reconfiguration of the Main Circle Road entry, including the addition of walkway treatments; replacement of Stand A and introduction of Stand B; removal of contributing woodlands; and the addition of picnic decks and walkway treatments in the core farm area through the changes in the setting, circulation, vistas and views, and spatial relationships within the site. The alternative will mitigate adverse impacts on the cultural landscape by using materials (e.g., wood, stone) and a design that are compatible with the historic character of the landscape. The bridge replacement, surface materials for the updated walkways, rehabilitation of the Associates Building and Cabin, and small-scale improvements (e.g., signage, benches) will be undertaken in a manner that is consistent with the *Secretary of the Interior’s Standards for the Treatment of Historic Properties* and *Secretary of the Interior’s Standards Guidelines for the Treatment of Cultural Landscapes*. Consultation with the Virginia SHPO and Associated Tribes will occur as specific projects are designed and implemented. Overall, the preferred alternative would not diminish the integrity of the cultural landscapes. Therefore, there will be no impairment to the park’s resources related to cultural landscapes because no major, long-term, adverse impacts to those resources would occur from implementation of the preferred alternative.

Archeological Resources

Implementation of the selected alternative will result in detectable adverse impacts on archeological resources. The project’s area of potential effect (APE) has areas with a high potential to contain

undocumented precontact and historic archeological deposits. Ground disturbance related to the proposed project elements could disrupt or displace unknown archeological resources and result in a loss of integrity of the archeological resource, resulting in an adverse impact. In order to avoid and minimize potential adverse impacts, the NPS will undertake archeological investigation for any areas of potential ground disturbance with moderate to high archeological potential. Such investigations will include, at a minimum, pedestrian inspection, close-interval shovel testing, and/or mechanical removal of thick fill overburdens to test potential stable, buried surfaces, and associated geoarcheological investigation to identify areas with the greatest chance of containing buried paleosols. All proposed archeological investigations will be planned in consultation with the NPS and the Virginia SHPO and Associated Tribes. A protocol for the unanticipated discovery of cemeteries or human remains shall be developed for the construction contractor. If any Native American burials, cemeteries, or funerary objects are encountered, NPS will contact federally recognized Tribes with affiliation in Virginia, in accordance with the NAGPRA. NPS will also avoid disturbing known archeological resources during design and construction to the extent practicable. During the construction phase, NPS will also minimize ground-disturbing activities to the extent practicable, including using existing vehicle circulation areas and construction methods that minimize land disturbance. Therefore, there will be no impairment to the park's resources related to cultural landscapes because no major, long-term, adverse impacts to those resources would occur from implementation of the preferred alternative.

CONCLUSION

The NPS has determined that the implementation of the NPS selected alternative will not constitute an impairment of the resources or values of Wolf Trap National Park for the Performing Arts. As described above, implementing the selected alternative is not anticipated to impair resources or values that are essential to the purposes identified in the establishing legislation of the park, key to the natural or cultural integrity of the park, or identified as significant in the park's relevant planning documents. This conclusion is based on consideration of the park's purpose and significance, a thorough analysis of the environmental impacts described in the EA, the comments provided by the public and others, and the professional judgment of the decision-maker guided by the direction of the NPS Management Policies 2006.

APPENDIX C: PUBLIC COMMENT RESPONSES

Topic	Concern Statement Summarized	Response
Support for Project	Support project.	Comment noted.
Performances	Seating for non-Wolf Trap Foundation members is inadequate.	Comment noted. Performance times, schedule, seating availability, and pricing are beyond the scope of this project.
	Start performances earlier to accommodate local noise ordinances.	
	Expand the performance season.	
	Keep ticket prices low or reduce ticket prices.	
Visitor Use and Experience	Add banners, recycling bins, lighting and artwork to tunnel, and fans in the Filene Center; add misting and water bottle filling stations, and fountain to avoid heat-related health concerns.	Comment noted. Specific, small-scale building and site improvements are beyond the scope of this project.
	Add wayfinding signs starting in the parking lot.	Comment noted. Page 18 of the Management Plan and EA states "A comprehensive signage and wayfinding system would be developed to inform and direct visitors and patrons to the park and provide in-depth information on the full range of park features and amenities that are available year-round."
	Encourage use of shaded trails and add shade in high-traffic areas.	Page 18 of the Management Plan and EA states "A comprehensive signage and wayfinding system would be developed to inform and direct visitors and patrons to the park and provide in-depth information on the full range of park features and amenities that are available year-round." Page 16 states "Trails in the park would be realigned in areas that have suffered erosion or other design issues, and one trail bridge would be replaced." Page 17 of the EA calls for walkway treatments in queuing areas to provide shade.
	Include outdoor classrooms that can shelter field trip visitors from the weather.	Comment noted. New and existing facilities can be made available for use to provide shelter.

Topic	Concern Statement Summarized	Response
Visitor Use and Experience	Provide temperature-controlled break spaces for staff and volunteers.	Page 18 of the EA states "The existing Cabin would be rehabilitated to support services, such as the U.S. Park Police (USPP), a visitor contact station, or usher space." The rehabilitation would be temperature controlled.
	Add restrooms.	The EA calls for new restrooms near the Filene Center as part of Stands A and B, the Meadow Pavilion, and the Children's Theatre-in-the-Woods.
	Add more food options.	As described in the Plan, Stands A and B would provide concessions both within and outside the ticketed area.
	Enclose the Filene Center for year-round performances.	The enclosure of the Filene Center would result in an adverse effect on the historic property. Additionally, it would conflict with park's purpose and significance, which includes conserving "a former agricultural site that allows visitors to experience cultural arts and compatible recreation in an outdoor setting."
	Expand lawn seating.	An expansion of lawn seating would diminish the visitor experience due to poor views of the performance and overcrowding of overall Filene Center area. Additionally, expanded lawn seating would result in adverse impacts on the cultural landscape.
	Restrooms should be climate controlled.	Restrooms within new buildings will be climate controlled. Temporary restrooms identified in the plan may not be climate controlled, but exposure to them would be limited.
	Limits on personal items brought into the Filene Center, including coolers, are too restrictive.	Comment noted. Specific entry security policies are beyond the scope of this project.
Circulation	Allow priority for buses.	Comment noted. The improvements to vehicular circulation, including the addition of a travel lane, described on Page 14 of the EA, are intended to improve bus circulation within the site.
	Improve traffic flows out of the park.	Pages 14-16 of the EA identify vehicular and pedestrian circulation, including improved circulation around Main Circle and ways to avoid pedestrian-vehicular conflicts along Barn Road.
Circulation	Add bicycle rack, Capital Bikeshare, and improve bicycle circulation within park.	Comment noted. The Plan does not preclude the incorporation of bicycle connections and amenities. Potential bicycle access improvements will be considered and reviewed as part of the implementation of individual projects.

Topic	Concern Statement Summarized	Response
	Improve transit access to park and expand shuttle service.	Page 14 of the EA states "The existing pick-up and drop-off zone for the Wolf Trap Express Shuttle would remain along Main Circle Road; the Foundation would continue to coordinate with Fairfax County to provide shuttle services to Metrorail stations, including a potential shuttle connection to the Metrorail's Silver Line."
	Expand trails.	New trails were not considered as part of the Plan in order to minimize impacts on significant vegetative communities and natural resources.
	Add an overpass across Trap Road to void tunnel and crosswalk bottlenecks.	Page 16 of the EA states "A new pedestrian connection would extend the existing sidewalk along Main Circle Road, install a sidewalk along the southern side of Barn Road, add a pedestrian path to the Gil's Road, and add a new tunnel under, Main Circle Road at Barn Road. The tunnel under Main Circle Road and Barn Road would replace an at-grade pedestrian crossing of Main Circle Road."
Accessibility	Add accessible areas on lawn.	Comment noted. The Plan calls for multiple accessibility improvements, including within the Filene Center. Accessible seating within the lawn in not considered feasible.
	The park does not have enough ADA parking or accommodations.	Page 14 of the EA notes the addition of 65 accessible spaces and pages 14-16 describes the addition of accessible circulation in the Filene Center area and throughout the park.
Park Maintenance	Maintain facilities properly.	Comment noted. Maintenance is beyond the scope of the Management Plan.
Park Jurisdiction	Transfer park to State of Virginia.	Comment noted. The NPS has no plans to transfer jurisdiction.
Safety	Provide shuttle service to prevent over exertion of susceptible visitors.	The park plans to continue courtesy cart service. Additionally, Page 14 of the EA notes the addition of 65 accessible spaces.
	Plan new buildings as options for tornado shelters.	Comment noted. The park has a hazardous weather plan. Announcements are made to direct people to appropriate shelters during severe weather events.
Park Name	Change the name from Wolf Trap because the connotation is poor.	The name Wolf Trap National Park for the Performing Arts is determined by federal law.

Topic	Concern Statement Summarized	Response
Floodplains	Summarize compliance with Executive Order 13690.	NPS's floodplain procedures require that if an action must occur in a floodplain, and there could be adverse impacts to people, property, natural and beneficial floodplain values or flood elevations, a Floodplain Statement of Findings documenting consistency with E.O. 11988 and E.O. 13690 must be prepared. Each project will be evaluated prior to implementation.
Implementation Permitting	Coordinate with and obtain permits from appropriate agencies as projects are implemented.	The NPS will coordinate with, and obtain permits from, appropriate agencies as projects are implemented.

APPENDIX D: SECTION 106 COORDINATION LETTERS



United States Department of the Interior



NATIONAL PARK SERVICE
Wolf Trap National Park for the Performing Arts
1551 Trap Road
Vienna, VA 22182

February 20, 2020

Ms. Julie Langan
State Historic Preservation Officer
Virginia Department of Historic Resources
2801 Kensington Avenue
Richmond, VA 23221

Subject: Section 106 Consultation for Wolf Trap National Park for the Performing Arts
Development Concept Plan and upcoming projects

Dear Ms. Langan:

The National Park Service (NPS) wishes to formally initiate consultation with the Virginia State Historic Preservation Office, in accordance with 36 CFR 800.3 of Section 106 of the National Historic Preservation Act of 1966, as amended, regarding the proposed Development Concept Plan (DCP) for the re-visioning of Wolf Trap National Park for the Performing Arts in Vienna, VA.

Wolf Trap National Park for the Performing Arts provides opportunities to experience live performances, related educational programs, and associated recreation in a pastoral setting within the National Capital area. The DCP involves the re-visioning of park facilities that would build upon the location's history as the only National Park established for the presentation of performing arts, while providing modern and expected amenities that improve the visitor and artist experience. The project area for Wolf Trap National Park for the Performing Arts (WOTR) is administered by the National Park Service.

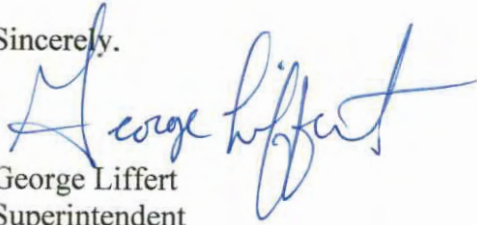
In accordance with the National Environmental Policy Act (NEPA), the NPS will prepare an Environmental Assessment (EA) that will address this DCP. The NPS intends to coordinate consultation and NEPA review per Advisory Council on Historic Preservation (ACHP) regulations (36 CFR 800.8) and to consult the public per 36 CFA 800.3(e) in public meetings and through our Planning, Environment, and Public Comment (PEPC) website (<https://parkplanning.nps.gov/>). It is anticipated that these outreach efforts will accommodate both NEPA and the Section 106 processes, although NEPA and the Section 106 processes are on two separate, but parallel tracks.

The proposed Area of Potential Effect is shown on the attached map. We are in the process of identifying historic properties and assessing effects. Once determined, the NPS will prepare a formal Assessment of Effects for the project.

I would like to extend an invitation to you and/or your staff to a site visit to the park to learn more about the DCP, upcoming projects, and ongoing baseline documentation being conducted in accordance with the NPS's Section 110 responsibilities.

We look forward to coordinating with your office for a site visit. Please coordinate with Mr. Sam Tamburro, Chief of Cultural Resources, NPS National Capital Area, at 202-619-7146 or via email at sam_tamburro@nps.gov.

Sincerely,



George Liffert
Superintendent
National Park Service
Region 1 - National Capital Area
Office: 703-255-1808

Enclosure: Proposed Area of Potential Effect

cc: NCA RESS/Wheelock/Tamburro



United States Department of the Interior



NATIONAL PARK SERVICE
Wolf Trap National Park for the Performing Arts
1551 Trap Road
Vienna, VA 22182

May 13, 2021

Mr. Mark Custalow
Chief
Mattaponi Indian Tribe
122 Wee-A-Ya Lane
West Point, VA 23181

Subject: Section 106 Consultation for Wolf Trap National Park for the Performing Arts
Master Plan

Dear Mr. Custalow:

The National Park Service (NPS) wishes to formally initiate consultation with the Mattaponi Indian Tribe, in accordance with 36 CFR 800.3 of Section 106 of the National Historic Preservation Act of 1966, as amended, regarding the proposed amendment to the 1997 General Management Plan (GMP) for Wolf Trap National Park for the Performing Arts in Vienna, Virginia. The proposed amendment will serve to build upon and adjust elements of the existing GMP to meet the current and future needs of the park. You are invited to participate in a consulting parties meeting for the project scheduled for Thursday, May 27 at 3:00 p.m.

Wolf Trap National Park for the Performing Arts provide opportunities to experience live performances, related educational programs, and associated recreation in a pastoral setting within the National Capital area. The GMP amendment proposes changes to park facilities that would build upon the location's history as the only park established for the performing arts venue in a National Park, while providing modern and unexpected amenities that improve of the visitor and artist experience. The Wolf Trap National Park for the Performing Arts (WOTR) administers the project area.

In accordance with the National Environmental Policy Act (NEPA), the NPS will prepare an Environmental Assessment (EA) that will address this project. The NPS intends to coordinate consultation and NEPA review per Advisory Council on Historic Preservation (ACHP) regulations (36 CFR 800.8) and to consult the public per 36 CFA 800.3(e) in public meetings and through our Planning, Environment, and Public Comment (PEPC) website (<https://parkplanning.nps.gov/>). It is anticipated that these outreach efforts will accommodate both NEPA and the Section 106 processes, although NEPA and the Section 106 processes are on two separate, but parallel tracks.

The proposed Area of Potential Effect is shown in the attached map. However, at this early stage, we are unable to make any determination of effect. The NPS is seeking ways to avoid and minimize the potential for adverse effects on historic properties. Once determined, the NPS will prepare a formal Assessment of Effects for the project.

As mentioned above, you are invited to participate in a consulting parties meeting for the project is scheduled for Thursday, May 27 at 3:00 p.m. The meeting will be held virtually. You can join via audio only by calling 202-640-1187 and using the phone conference identification number 571 525 971#. For audio and video components, the meeting can be accessed using this link:

https://urldefense.proofpoint.com/v2/url?u=https-3A_teams.microsoft.com_1_meetup-2Djoin_19-253ameeting-5FMTEzZTFiNmItMjUwYS00ZjYyLWI2ZjAtOGQ3ODQ2ZWVIYzM5-2540thread.v2_0-3Fcontext-3D-257b-2522Tid-2522-253a-25220693b5ba-2D4b18-2D4d7b-2D9341-2Df32f400a5494-2522-252c-2522Oid-2522-253a-25220a5e74c3-2D26d9-2D4282-2D8ef6-2D6d9112be2457-2522-257d&d=DwMFaW&c=TQzoP61-bYDBLzNd0XmHrw&r=Rg9qlQhmc4LbKpoF6tcmHak5ynZ22GY4vKc5RHgDIgG&m=bPKQSJ4kDSbhYDQ9mn1sAeuqo8_LW00x95GU1AzyRXk&s=hcWrfdyQwKRiF-6DYq_70BRclOEinT8AZirrAHb0L40&e=

I would also like to extend an invitation to you and/or your organization to a site visit to the park to learn more about the Master Plan, upcoming projects, and ongoing baseline documentation being conducted in accordance with the NPS's Section 110 responsibilities. We look forward to coordinating with your organization for a site visit. Please coordinate with Mr. Sam Tamburro, Chief of Cultural Resources, NPS National Capital Area, at 202-619-7146 or via email at sam_tamburro@nps.gov.

Sincerely,

George Liffert
Superintendent

Enclosure: Proposed Area of Potential Effect

Proposed Area of Potential Effect





United States Department of the Interior



NATIONAL PARK SERVICE
Wolf Trap National Park for the Performing Arts
1551 Trap Road
Vienna, VA 22182

May 13, 2021

Ms. Lynette Allston
Chief
Nottoway Indian Tribe of Virginia
P.O. Box 246
Capron, VA 23829

Subject: Section 106 Consultation for Wolf Trap National Park for the Performing Arts
Master Plan

Dear Ms. Allston:

The National Park Service (NPS) wishes to formally initiate consultation with the Nottoway Indian Tribe of Virginia, in accordance with 36 CFR 800.3 of Section 106 of the National Historic Preservation Act of 1966, as amended, regarding the proposed amendment to the 1997 General Management Plan (GMP) for Wolf Trap National Park for the Performing Arts in Vienna, Virginia. The proposed amendment will serve to build upon and adjust elements of the existing GMP to meet the current and future needs of the park. You are invited to participate in a consulting parties meeting for the project scheduled for Thursday, May 27 at 3:00 p.m.

Wolf Trap National Park for the Performing Arts provide opportunities to experience live performances, related educational programs, and associated recreation in a pastoral setting within the National Capital area. The GMP amendment proposes changes to park facilities that would build upon the location's history as the only park established for the performing arts venue in a National Park, while providing modern and unexpected amenities that improve of the visitor and artist experience. The Wolf Trap National Park for the Performing Arts (WOTR) administers the project area.

In accordance with the National Environmental Policy Act (NEPA), the NPS will prepare an Environmental Assessment (EA) that will address this project. The NPS intends to coordinate consultation and NEPA review per Advisory Council on Historic Preservation (ACHP) regulations (36 CFR 800.8) and to consult the public per 36 CFA 800.3(e) in public meetings and through our Planning, Environment, and Public Comment (PEPC) website (<https://parkplanning.nps.gov/>). It is anticipated that these outreach efforts will accommodate both NEPA and the Section 106 processes, although NEPA and the Section 106 processes are on two separate, but parallel tracks.

The proposed Area of Potential Effect is shown in the attached map. However, at this early stage, we are unable to make any determination of effect. The NPS is seeking ways to avoid and minimize the potential for adverse effects on historic properties. Once determined, the NPS will prepare a formal Assessment of Effects for the project.

As mentioned above, you are invited to participate in a consulting parties meeting for the project is scheduled for Thursday, May 27 at 3:00 p.m. The meeting will be held virtually. You can join via audio only by calling 202-640-1187 and using the phone conference identification number 571 525 971#. For audio and video components, the meeting can be accessed using this link:

https://urldefense.proofpoint.com/v2/url?u=https-3A_teams.microsoft.com_1_meetup-2Djoin_19-253ameeting-5FMTEzZTFiNmItMjUwYS00ZjYyLWI2ZjAtOGQ3ODQ2ZWVIYzM5-2540thread.v2_0-3Fcontext-3D-257b-2522Tid-2522-253a-25220693b5ba-2D4b18-2D4d7b-2D9341-2Df32f400a5494-2522-252c-2522Oid-2522-253a-25220a5e74c3-2D26d9-2D4282-2D8ef6-2D6d9112be2457-2522-257d&d=DwMFaW&c=TQzoP61-bYDBLzNd0XmHrw&r=Rg9qlQhmc4LbKpoF6tcmHak5ynZ22GY4vKc5RHgDIgG&m=bPKQSJ4kDSbhYDQ9mn1sAeuqo8_LW00x95GU1AzyRXk&s=hcWrfdyQwKRiF-6DYq_70BRclOEinT8AZirrAHb0L40&e=

I would also like to extend an invitation to you and/or your organization to a site visit to the park to learn more about the Master Plan, upcoming projects, and ongoing baseline documentation being conducted in accordance with the NPS's Section 110 responsibilities. We look forward to coordinating with your organization for a site visit. Please coordinate with Mr. Sam Tamburro, Chief of Cultural Resources, NPS National Capital Area, at 202-619-7146 or via email at sam_tamburro@nps.gov.

Sincerely,

George Liffert
Superintendent

Enclosure: Proposed Area of Potential Effect

Proposed Area of Potential Effect





United States Department of the Interior



NATIONAL PARK SERVICE
Wolf Trap National Park for the Performing Arts
1551 Trap Road
Vienna, VA 22182

May 13, 2021

Mr. Walt "Red Hawk" Brown
Chief
Cheroenhaka Nottoway Nation
P.O. Box 397
Courtland, VA 23837

Subject: Section 106 Consultation for Wolf Trap National Park for the Performing Arts
Master Plan

Dear Mr. Brown:

The National Park Service (NPS) wishes to formally initiate consultation with the Cheroenhaka Nottoway Nation, in accordance with 36 CFR 800.3 of Section 106 of the National Historic Preservation Act of 1966, as amended, regarding the proposed amendment to the 1997 General Management Plan (GMP) for Wolf Trap National Park for the Performing Arts in Vienna, Virginia. The proposed amendment will serve to build upon and adjust elements of the existing GMP to meet the current and future needs of the park. You are invited to participate in a consulting parties meeting for the project scheduled for Thursday, May 27 at 3:00 p.m.

Wolf Trap National Park for the Performing Arts provide opportunities to experience live performances, related educational programs, and associated recreation in a pastoral setting within the National Capital area. The GMP amendment proposes changes to park facilities that would build upon the location's history as the only park established for the performing arts venue in a National Park, while providing modern and unexpected amenities that improve of the visitor and artist experience. The Wolf Trap National Park for the Performing Arts (WOTR) administers the project area.

In accordance with the National Environmental Policy Act (NEPA), the NPS will prepare an Environmental Assessment (EA) that will address this project. The NPS intends to coordinate consultation and NEPA review per Advisory Council on Historic Preservation (ACHP) regulations (36 CFR 800.8) and to consult the public per 36 CFA 800.3(e) in public meetings and through our Planning, Environment, and Public Comment (PEPC) website (<https://parkplanning.nps.gov/>). It is anticipated that these outreach efforts will accommodate both NEPA and the Section 106 processes, although NEPA and the Section 106 processes are on two separate, but parallel tracks.

The proposed Area of Potential Effect is shown in the attached map. However, at this early stage, we are unable to make any determination of effect. The NPS is seeking ways to avoid and minimize the potential for adverse effects on historic properties. Once determined, the NPS will prepare a formal Assessment of Effects for the project.

As mentioned above, you are invited to participate in a consulting parties meeting for the project is scheduled for Thursday, May 27 at 3:00 p.m. The meeting will be held virtually. You can join via audio only by calling 202-640-1187 and using the phone conference identification number 571 525 971#. For audio and video components, the meeting can be accessed using this link:

https://urldefense.proofpoint.com/v2/url?u=https-3A_teams.microsoft.com_1_meetup-2Djoin_19-253ameeting-5FMTEzZTFiNmItMjUwYS00ZjYyLWI2ZjAtOGQ3ODQ2ZWVIYzM5-2540thread.v2_0-3Fcontext-3D-257b-2522Tid-2522-253a-25220693b5ba-2D4b18-2D4d7b-2D9341-2Df32f400a5494-2522-252c-2522Oid-2522-253a-25220a5e74c3-2D26d9-2D4282-2D8ef6-2D6d9112be2457-2522-257d&d=DwMFaW&c=TQzoP61-bYDBLzNd0XmHrw&r=Rg9qlQhmc4LbKpoF6tcmHak5ynZ22GY4vKc5RHgDIgG&m=bPKQ SJ4kDSbhYDQ9mn1sAeuqo8_LW00x95GU1AzyRXk&s=hcWrfdyQwKRiF-6DYq_70BRclOEinT8AZirrAHb0L40&e=

I would also like to extend an invitation to you and/or your organization to a site visit to the park to learn more about the Master Plan, upcoming projects, and ongoing baseline documentation being conducted in accordance with the NPS's Section 110 responsibilities. We look forward to coordinating with your organization for a site visit. Please coordinate with Mr. Sam Tamburro, Chief of Cultural Resources, NPS National Capital Area, at 202-619-7146 or via email at sam_tamburro@nps.gov.

Sincerely,

George Liffert
Superintendent

Enclosure: Proposed Area of Potential Effect

Proposed Area of Potential Effect





United States Department of the Interior



NATIONAL PARK SERVICE
Wolf Trap National Park for the Performing Arts
1551 Trap Road
Vienna, VA 22182

May 13, 2021

Mr. Charles Bullock
Chief
Patawomeck Indian Tribe of Virginia
215 Chapel Green Road
Fredericksburg, VA 22405

Subject: Section 106 Consultation for Wolf Trap National Park for the Performing Arts
Master Plan

Dear Mr. Bullock :

The National Park Service (NPS) wishes to formally initiate consultation with the Patawomeck Indian Tribe of Virginia, in accordance with 36 CFR 800.3 of Section 106 of the National Historic Preservation Act of 1966, as amended, regarding the proposed amendment to the 1997 General Management Plan (GMP) for Wolf Trap National Park for the Performing Arts in Vienna, Virginia. The proposed amendment will serve to build upon and adjust elements of the existing GMP to meet the current and future needs of the park. You are invited to participate in a consulting parties meeting for the project scheduled for Thursday, May 27 at 3:00 p.m.

Wolf Trap National Park for the Performing Arts provide opportunities to experience live performances, related educational programs, and associated recreation in a pastoral setting within the National Capital area. The GMP amendment proposes changes to park facilities that would build upon the location's history as the only park established for the performing arts venue in a National Park, while providing modern and unexpected amenities that improve of the visitor and artist experience. The Wolf Trap National Park for the Performing Arts (WOTR) administers the project area.

In accordance with the National Environmental Policy Act (NEPA), the NPS will prepare an Environmental Assessment (EA) that will address this project. The NPS intends to coordinate consultation and NEPA review per Advisory Council on Historic Preservation (ACHP) regulations (36 CFR 800.8) and to consult the public per 36 CFA 800.3(e) in public meetings and through our Planning, Environment, and Public Comment (PEPC) website (<https://parkplanning.nps.gov/>). It is anticipated that these outreach efforts will accommodate both NEPA and the Section 106 processes, although NEPA and the Section 106 processes are on two separate, but parallel tracks.

The proposed Area of Potential Effect is shown in the attached map. However, at this early stage, we are unable to make any determination of effect. The NPS is seeking ways to avoid and minimize the potential for adverse effects on historic properties. Once determined, the NPS will prepare a formal Assessment of Effects for the project.

As mentioned above, you are invited to participate in a consulting parties meeting for the project is scheduled for Thursday, May 27 at 3:00 p.m. The meeting will be held virtually. You can join via audio only by calling 202-640-1187 and using the phone conference identification number 571 525 971#. For audio and video components, the meeting can be accessed using this link:

https://urldefense.proofpoint.com/v2/url?u=https-3A_teams.microsoft.com_1_meetup-2Djoin_19-253ameeting-5FMTEzZTFiNmItMjUwYS00ZjYyLWI2ZjAtOGQ3ODQ2ZWVIYzM5-2540thread.v2_0-3Fcontext-3D-257b-2522Tid-2522-253a-25220693b5ba-2D4b18-2D4d7b-2D9341-2Df32f400a5494-2522-252c-2522Oid-2522-253a-25220a5e74c3-2D26d9-2D4282-2D8ef6-2D6d9112be2457-2522-257d&d=DwMFaW&c=TQzoP61-bYDBLzNd0XmHrw&r=Rg9qlQhmc4LbKpoF6tcmHak5ynZ22GY4vKc5RHgDIgG&m=bPKQ SJ4kDSbhYDQ9mn1sAeuqo8_LW00x95GU1AzyRXk&s=hcWrfdyQwKRiF-6DYq_70BRclOEinT8AZirrAHb0L40&e=

I would also like to extend an invitation to you and/or your organization to a site visit to the park to learn more about the Master Plan, upcoming projects, and ongoing baseline documentation being conducted in accordance with the NPS's Section 110 responsibilities. We look forward to coordinating with your organization for a site visit. Please coordinate with Mr. Sam Tamburro, Chief of Cultural Resources, NPS National Capital Area, at 202-619-7146 or via email at sam_tamburro@nps.gov.

Sincerely,

George Liffert
Superintendent

Enclosure: Proposed Area of Potential Effect

Proposed Area of Potential Effect





United States Department of the Interior



NATIONAL PARK SERVICE
Wolf Trap National Park for the Performing Arts
1551 Trap Road
Vienna, VA 22182

May 13, 2021

Mr. Robert Gray
Chief
Pamunkey Indian Tribe
1054 Pocahontas Trail
King Willam, VA 23086

Subject: Section 106 Consultation for Wolf Trap National Park for the Performing Arts
Master Plan

Dear Mr. Gray :

The National Park Service (NPS) wishes to formally initiate consultation with the Pamunkey Indian Tribe, in accordance with 36 CFR 800.3 of Section 106 of the National Historic Preservation Act of 1966, as amended, regarding the proposed amendment to the 1997 General Management Plan (GMP) for Wolf Trap National Park for the Performing Arts in Vienna, Virginia. The proposed amendment will serve to build upon and adjust elements of the existing GMP to meet the current and future needs of the park. You are invited to participate in a consulting parties meeting for the project scheduled for Thursday, May 27 at 3:00 p.m.

Wolf Trap National Park for the Performing Arts provide opportunities to experience live performances, related educational programs, and associated recreation in a pastoral setting within the National Capital area. The GMP amendment proposes changes to park facilities that would build upon the location's history as the only park established for the performing arts venue in a National Park, while providing modern and unexpected amenities that improve of the visitor and artist experience. The Wolf Trap National Park for the Performing Arts (WOTR) administers the project area.

In accordance with the National Environmental Policy Act (NEPA), the NPS will prepare an Environmental Assessment (EA) that will address this project. The NPS intends to coordinate consultation and NEPA review per Advisory Council on Historic Preservation (ACHP) regulations (36 CFR 800.8) and to consult the public per 36 CFA 800.3(e) in public meetings and through our Planning, Environment, and Public Comment (PEPC) website (<https://parkplanning.nps.gov/>). It is anticipated that these outreach efforts will accommodate both NEPA and the Section 106 processes, although NEPA and the Section 106 processes are on two separate, but parallel tracks.

The proposed Area of Potential Effect is shown in the attached map. However, at this early stage, we are unable to make any determination of effect. The NPS is seeking ways to avoid and minimize the potential for adverse effects on historic properties. Once determined, the NPS will prepare a formal Assessment of Effects for the project.

As mentioned above, you are invited to participate in a consulting parties meeting for the project is scheduled for Thursday, May 27 at 3:00 p.m. The meeting will be held virtually. You can join via audio only by calling 202-640-1187 and using the phone conference identification number 571 525 971#. For audio and video components, the meeting can be accessed using this link:

https://urldefense.proofpoint.com/v2/url?u=https-3A_teams.microsoft.com_1_meetup-2Djoin_19-253ameeting-5FMTEzZTFiNmItMjUwYS00ZjYyLWI2ZjAtOGQ3ODQ2ZWVIYzM5-2540thread.v2_0-3Fcontext-3D-257b-2522Tid-2522-253a-25220693b5ba-2D4b18-2D4d7b-2D9341-2Df32f400a5494-2522-252c-2522Oid-2522-253a-25220a5e74c3-2D26d9-2D4282-2D8ef6-2D6d9112be2457-2522-257d&d=DwMFaW&c=TQzoP61-bYDBLzNd0XmHrw&r=Rg9qlQhmc4LbKpoF6tcmHak5ynZ22GY4vKc5RHgDIgG&m=bPKQ SJ4kDSbhYDQ9mn1sAeuqo8_LW00x95GU1AzyRXk&s=hcWrfdyQwKRiF-6DYq_70BRclOEinT8AZirrAHb0L40&e=

I would also like to extend an invitation to you and/or your organization to a site visit to the park to learn more about the Master Plan, upcoming projects, and ongoing baseline documentation being conducted in accordance with the NPS's Section 110 responsibilities. We look forward to coordinating with your organization for a site visit. Please coordinate with Mr. Sam Tamburro, Chief of Cultural Resources, NPS National Capital Area, at 202-619-7146 or via email at sam_tamburro@nps.gov.

Sincerely,

George Liffert
Superintendent

Enclosure: Proposed Area of Potential Effect

Proposed Area of Potential Effect





United States Department of the Interior



NATIONAL PARK SERVICE
Wolf Trap National Park for the Performing Arts
1551 Trap Road
Vienna, VA 22182

May 13, 2021

Mr. Frank Adams
Chief
Upper Mattaponi Indian Tribe
13476 King William Road
King William, VA 23086

Subject: Section 106 Consultation for Wolf Trap National Park for the Performing Arts
Master Plan

Dear Mr. Adams:

The National Park Service (NPS) wishes to formally initiate consultation with the Upper Mattaponi Indian Tribe, in accordance with 36 CFR 800.3 of Section 106 of the National Historic Preservation Act of 1966, as amended, regarding the proposed amendment to the 1997 General Management Plan (GMP) for Wolf Trap National Park for the Performing Arts in Vienna, Virginia. The proposed amendment will serve to build upon and adjust elements of the existing GMP to meet the current and future needs of the park. You are invited to participate in a consulting parties meeting for the project scheduled for Thursday, May 27 at 3:00 p.m.

Wolf Trap National Park for the Performing Arts provide opportunities to experience live performances, related educational programs, and associated recreation in a pastoral setting within the National Capital area. The GMP amendment proposes changes to park facilities that would build upon the location's history as the only park established for the performing arts venue in a National Park, while providing modern and unexpected amenities that improve of the visitor and artist experience. The Wolf Trap National Park for the Performing Arts (WOTR) administers the project area.

In accordance with the National Environmental Policy Act (NEPA), the NPS will prepare an Environmental Assessment (EA) that will address this project. The NPS intends to coordinate consultation and NEPA review per Advisory Council on Historic Preservation (ACHP) regulations (36 CFR 800.8) and to consult the public per 36 CFA 800.3(e) in public meetings and through our Planning, Environment, and Public Comment (PEPC) website (<https://parkplanning.nps.gov/>). It is anticipated that these outreach efforts will accommodate both NEPA and the Section 106 processes, although NEPA and the Section 106 processes are on two separate, but parallel tracks.

The proposed Area of Potential Effect is shown in the attached map. However, at this early stage, we are unable to make any determination of effect. The NPS is seeking ways to avoid and minimize the potential for adverse effects on historic properties. Once determined, the NPS will prepare a formal Assessment of Effects for the project.

As mentioned above, you are invited to participate in a consulting parties meeting for the project is scheduled for Thursday, May 27 at 3:00 p.m. The meeting will be held virtually. You can join via audio only by calling 202-640-1187 and using the phone conference identification number 571 525 971#. For audio and video components, the meeting can be accessed using this link:

https://urldefense.proofpoint.com/v2/url?u=https-3A_teams.microsoft.com_1_meetup-2Djoin_19-253ameeting-5FMTEzZTFiNmItMjUwYS00ZjYyLWI2ZjAtOGQ3ODQ2ZWVlYzM5-2540thread.v2_0-3Fcontext-3D-257b-2522Tid-2522-253a-25220693b5ba-2D4b18-2D4d7b-2D9341-2Df32f400a5494-2522-252c-2522Oid-2522-253a-25220a5e74c3-2D26d9-2D4282-2D8ef6-2D6d9112be2457-2522-257d&d=DwMFaW&c=TQzoP61-bYDBLzNd0XmHrw&r=Rg9qlQhmc4LbKpoF6tcmHak5ynZ22GY4vKc5RHgDIgG&m=bPKQ SJ4kDSbhYDQ9mn1sAeuqo8_LW00x95GU1AzyRXk&s=hcWrfdyQwKRiF-6DYq_70BRclOEinT8AZirrAHb0L40&e=

I would also like to extend an invitation to you and/or your organization to a site visit to the park to learn more about the Master Plan, upcoming projects, and ongoing baseline documentation being conducted in accordance with the NPS's Section 110 responsibilities. We look forward to coordinating with your organization for a site visit. Please coordinate with Mr. Sam Tamburro, Chief of Cultural Resources, NPS National Capital Area, at 202-619-7146 or via email at sam_tamburro@nps.gov.

Sincerely,

George Liffert
Superintendent

Enclosure: Proposed Area of Potential Effect

Proposed Area of Potential Effect





United States Department of the Interior



NATIONAL PARK SERVICE
Wolf Trap National Park for the Performing Arts
1551 Trap Road
Vienna, VA 22182

May 13, 2021

Ms. Anne Richardson
Chief
Rappahannock Tribe
5036 Indian Neck Road
Indian Neck, VA 23148

Subject: Section 106 Consultation for Wolf Trap National Park for the Performing Arts
Master Plan

Dear Ms. Richardson:

The National Park Service (NPS) wishes to formally initiate consultation with the Rappahannock Tribe, in accordance with 36 CFR 800.3 of Section 106 of the National Historic Preservation Act of 1966, as amended, regarding the proposed amendment to the 1997 General Management Plan (GMP) for Wolf Trap National Park for the Performing Arts in Vienna, Virginia. The proposed amendment will serve to build upon and adjust elements of the existing GMP to meet the current and future needs of the park. You are invited to participate in a consulting parties meeting for the project scheduled for Thursday, May 27 at 3:00 p.m.

Wolf Trap National Park for the Performing Arts provide opportunities to experience live performances, related educational programs, and associated recreation in a pastoral setting within the National Capital area. The GMP amendment proposes changes to park facilities that would build upon the location's history as the only park established for the performing arts venue in a National Park, while providing modern and unexpected amenities that improve of the visitor and artist experience. The Wolf Trap National Park for the Performing Arts (WOTR) administers the project area.

In accordance with the National Environmental Policy Act (NEPA), the NPS will prepare an Environmental Assessment (EA) that will address this project. The NPS intends to coordinate consultation and NEPA review per Advisory Council on Historic Preservation (ACHP) regulations (36 CFR 800.8) and to consult the public per 36 CFA 800.3(e) in public meetings and through our Planning, Environment, and Public Comment (PEPC) website (<https://parkplanning.nps.gov/>). It is anticipated that these outreach efforts will accommodate both NEPA and the Section 106 processes, although NEPA and the Section 106 processes are on two separate, but parallel tracks.

The proposed Area of Potential Effect is shown in the attached map. However, at this early stage, we are unable to make any determination of effect. The NPS is seeking ways to avoid and minimize the potential for adverse effects on historic properties. Once determined, the NPS will prepare a formal Assessment of Effects for the project.

As mentioned above, you are invited to participate in a consulting parties meeting for the project is scheduled for Thursday, May 27 at 3:00 p.m. The meeting will be held virtually. You can join via audio only by calling 202-640-1187 and using the phone conference identification number 571 525 971#. For audio and video components, the meeting can be accessed using this link:

https://urldefense.proofpoint.com/v2/url?u=https-3A_teams.microsoft.com_1_meetup-2Djoin_19-253ameeting-5FMTEzZTFiNmItMjUwYS00ZjYyLWI2ZjAtOGQ3ODQ2ZWVIYzM5-2540thread.v2_0-3Fcontext-3D-257b-2522Tid-2522-253a-25220693b5ba-2D4b18-2D4d7b-2D9341-2Df32f400a5494-2522-252c-2522Oid-2522-253a-25220a5e74c3-2D26d9-2D4282-2D8ef6-2D6d9112be2457-2522-257d&d=DwMFaW&c=TQzoP61-bYDBLzNd0XmHrw&r=Rg9qlQhmc4LbKpoF6tcmHak5ynZ22GY4vKc5RHgDIgG&m=bPKQ SJ4kDSbhYDQ9mn1sAeuqo8_LW00x95GU1AzyRXk&s=hcWrfdyQwKRiF-6DYq_70BRclOEinT8AZirrAHb0L40&e=

I would also like to extend an invitation to you and/or your organization to a site visit to the park to learn more about the Master Plan, upcoming projects, and ongoing baseline documentation being conducted in accordance with the NPS's Section 110 responsibilities. We look forward to coordinating with your organization for a site visit. Please coordinate with Mr. Sam Tamburro, Chief of Cultural Resources, NPS National Capital Area, at 202-619-7146 or via email at sam_tamburro@nps.gov.

Sincerely,

George Liffert
Superintendent

Enclosure: Proposed Area of Potential Effect

Proposed Area of Potential Effect





United States Department of the Interior



NATIONAL PARK SERVICE
Wolf Trap National Park for the Performing Arts
1551 Trap Road
Vienna, VA 22182

May 13, 2021

Mr. Samuel Bass
Chief
Nansemond Indian Nation
1001 Pembroke Lane
Suffolk, VA 23434

Subject: Section 106 Consultation for Wolf Trap National Park for the Performing Arts
Master Plan

Dear Mr. Bass:

The National Park Service (NPS) wishes to formally initiate consultation with the Nansemond Indian Nation, in accordance with 36 CFR 800.3 of Section 106 of the National Historic Preservation Act of 1966, as amended, regarding the proposed amendment to the 1997 General Management Plan (GMP) for Wolf Trap National Park for the Performing Arts in Vienna, Virginia. The proposed amendment will serve to build upon and adjust elements of the existing GMP to meet the current and future needs of the park. You are invited to participate in a consulting parties meeting for the project scheduled for Thursday, May 27 at 3:00 p.m.

Wolf Trap National Park for the Performing Arts provide opportunities to experience live performances, related educational programs, and associated recreation in a pastoral setting within the National Capital area. The GMP amendment proposes changes to park facilities that would build upon the location's history as the only park established for the performing arts venue in a National Park, while providing modern and unexpected amenities that improve of the visitor and artist experience. The Wolf Trap National Park for the Performing Arts (WOTR) administers the project area.

In accordance with the National Environmental Policy Act (NEPA), the NPS will prepare an Environmental Assessment (EA) that will address this project. The NPS intends to coordinate consultation and NEPA review per Advisory Council on Historic Preservation (ACHP) regulations (36 CFR 800.8) and to consult the public per 36 CFA 800.3(e) in public meetings and through our Planning, Environment, and Public Comment (PEPC) website (<https://parkplanning.nps.gov/>). It is anticipated that these outreach efforts will accommodate both NEPA and the Section 106 processes, although NEPA and the Section 106 processes are on two separate, but parallel tracks.

The proposed Area of Potential Effect is shown in the attached map. However, at this early stage, we are unable to make any determination of effect. The NPS is seeking ways to avoid and minimize the potential for adverse effects on historic properties. Once determined, the NPS will prepare a formal Assessment of Effects for the project.

As mentioned above, you are invited to participate in a consulting parties meeting for the project is scheduled for Thursday, May 27 at 3:00 p.m. The meeting will be held virtually. You can join via audio only by calling 202-640-1187 and using the phone conference identification number 571 525 971#. For audio and video components, the meeting can be accessed using this link:

https://urldefense.proofpoint.com/v2/url?u=https-3A_teams.microsoft.com_1_meetup-2Djoin_19-253ameeting-5FMTEzZTFiNmItMjUwYS00ZjYyLWI2ZjAtOGQ3ODQ2ZWVIYzM5-2540thread.v2_0-3Fcontext-3D-257b-2522Tid-2522-253a-25220693b5ba-2D4b18-2D4d7b-2D9341-2Df32f400a5494-2522-252c-2522Oid-2522-253a-25220a5e74c3-2D26d9-2D4282-2D8ef6-2D6d9112be2457-2522-257d&d=DwMFaW&c=TQzoP61-bYDBLzNd0XmHrw&r=Rg9qlQhmc4LbKpoF6tcmHak5ynZ22GY4vKc5RHgDIgG&m=bPKQ SJ4kDSbhYDQ9mn1sAeuqo8_LW00x95GU1AzyRXk&s=hcWrfdyQwKRiF-6DYq_70BRclOEinT8AZirrAHb0L40&e=

I would also like to extend an invitation to you and/or your organization to a site visit to the park to learn more about the Master Plan, upcoming projects, and ongoing baseline documentation being conducted in accordance with the NPS's Section 110 responsibilities. We look forward to coordinating with your organization for a site visit. Please coordinate with Mr. Sam Tamburro, Chief of Cultural Resources, NPS National Capital Area, at 202-619-7146 or via email at sam_tamburro@nps.gov.

Sincerely,

George Liffert
Superintendent

Enclosure: Proposed Area of Potential Effect

Proposed Area of Potential Effect





United States Department of the Interior



NATIONAL PARK SERVICE
Wolf Trap National Park for the Performing Arts
1551 Trap Road
Vienna, VA 22182

May 13, 2021

Mr. Stephen Adkins
Chief
Chickahominy Indian Tribe
8200 Lott Cary Road
Providence Forge, VA 23140

Subject: Section 106 Consultation for Wolf Trap National Park for the Performing Arts
Master Plan

Dear Mr. Adkins:

The National Park Service (NPS) wishes to formally initiate consultation with the Chickahominy Indian Tribe, in accordance with 36 CFR 800.3 of Section 106 of the National Historic Preservation Act of 1966, as amended, regarding the proposed amendment to the 1997 General Management Plan (GMP) for Wolf Trap National Park for the Performing Arts in Vienna, Virginia. The proposed amendment will serve to build upon and adjust elements of the existing GMP to meet the current and future needs of the park. You are invited to participate in a consulting parties meeting for the project scheduled for Thursday, May 27 at 3:00 p.m.

Wolf Trap National Park for the Performing Arts provide opportunities to experience live performances, related educational programs, and associated recreation in a pastoral setting within the National Capital area. The GMP amendment proposes changes to park facilities that would build upon the location's history as the only park established for the performing arts venue in a National Park, while providing modern and unexpected amenities that improve of the visitor and artist experience. The Wolf Trap National Park for the Performing Arts (WOTR) administers the project area.

In accordance with the National Environmental Policy Act (NEPA), the NPS will prepare an Environmental Assessment (EA) that will address this project. The NPS intends to coordinate consultation and NEPA review per Advisory Council on Historic Preservation (ACHP) regulations (36 CFR 800.8) and to consult the public per 36 CFA 800.3(e) in public meetings and through our Planning, Environment, and Public Comment (PEPC) website (<https://parkplanning.nps.gov/>). It is anticipated that these outreach efforts will accommodate both NEPA and the Section 106 processes, although NEPA and the Section 106 processes are on two separate, but parallel tracks.

The proposed Area of Potential Effect is shown in the attached map. However, at this early stage, we are unable to make any determination of effect. The NPS is seeking ways to avoid and minimize the potential for adverse effects on historic properties. Once determined, the NPS will prepare a formal Assessment of Effects for the project.

As mentioned above, you are invited to participate in a consulting parties meeting for the project is scheduled for Thursday, May 27 at 3:00 p.m. The meeting will be held virtually. You can join via audio only by calling 202-640-1187 and using the phone conference identification number 571 525 971#. For audio and video components, the meeting can be accessed using this link:

https://urldefense.proofpoint.com/v2/url?u=https-3A_teams.microsoft.com_1_meetup-2Djoin_19-253ameeting-5FMTEzZTFiNmItMjUwYS00ZjYyLWI2ZjAtOGQ3ODQ2ZWVIYzM5-2540thread.v2_0-3Fcontext-3D-257b-2522Tid-2522-253a-25220693b5ba-2D4b18-2D4d7b-2D9341-2Df32f400a5494-2522-252c-2522Oid-2522-253a-25220a5e74c3-2D26d9-2D4282-2D8ef6-2D6d9112be2457-2522-257d&d=DwMFaW&c=TQzoP61-bYDBLzNd0XmHrw&r=Rg9qlQhmc4LbKpoF6tcmHak5ynZ22GY4vKc5RHgDIgG&m=bPKQ SJ4kDSbhYDQ9mn1sAeuqo8_LW00x95GU1AzyRXk&s=hcWrfdyQwKRiF-6DYq_70BRclOEinT8AZirrAHb0L40&e=

I would also like to extend an invitation to you and/or your organization to a site visit to the park to learn more about the Master Plan, upcoming projects, and ongoing baseline documentation being conducted in accordance with the NPS's Section 110 responsibilities. We look forward to coordinating with your organization for a site visit. Please coordinate with Mr. Sam Tamburro, Chief of Cultural Resources, NPS National Capital Area, at 202-619-7146 or via email at sam_tamburro@nps.gov.

Sincerely,

George Liffert
Superintendent

Enclosure: Proposed Area of Potential Effect

Proposed Area of Potential Effect





United States Department of the Interior



NATIONAL PARK SERVICE
Wolf Trap National Park for the Performing Arts
1551 Trap Road
Vienna, VA 22182

May 13, 2021

Mr. Gerald Stewart
Chief
Chickahominy Tribe Eastern Division
1191 Indian Hill Lane
Providence Forge, VA 23140

Subject: Section 106 Consultation for Wolf Trap National Park for the Performing Arts
Master Plan

Dear Mr. Stewart:

The National Park Service (NPS) wishes to formally initiate consultation with the Chickahominy Tribe Eastern Division, in accordance with 36 CFR 800.3 of Section 106 of the National Historic Preservation Act of 1966, as amended, regarding the proposed amendment to the 1997 General Management Plan (GMP) for Wolf Trap National Park for the Performing Arts in Vienna, Virginia. The proposed amendment will serve to build upon and adjust elements of the existing GMP to meet the current and future needs of the park. You are invited to participate in a consulting parties meeting for the project scheduled for Thursday, May 27 at 3:00 p.m.

Wolf Trap National Park for the Performing Arts provide opportunities to experience live performances, related educational programs, and associated recreation in a pastoral setting within the National Capital area. The GMP amendment proposes changes to park facilities that would build upon the location's history as the only park established for the performing arts venue in a National Park, while providing modern and unexpected amenities that improve of the visitor and artist experience. The Wolf Trap National Park for the Performing Arts (WOTR) administers the project area.

In accordance with the National Environmental Policy Act (NEPA), the NPS will prepare an Environmental Assessment (EA) that will address this project. The NPS intends to coordinate consultation and NEPA review per Advisory Council on Historic Preservation (ACHP) regulations (36 CFR 800.8) and to consult the public per 36 CFA 800.3(e) in public meetings and through our Planning, Environment, and Public Comment (PEPC) website (<https://parkplanning.nps.gov/>). It is anticipated that these outreach efforts will accommodate both NEPA and the Section 106 processes, although NEPA and the Section 106 processes are on two separate, but parallel tracks.

The proposed Area of Potential Effect is shown in the attached map. However, at this early stage, we are unable to make any determination of effect. The NPS is seeking ways to avoid and minimize the potential for adverse effects on historic properties. Once determined, the NPS will prepare a formal Assessment of Effects for the project.

As mentioned above, you are invited to participate in a consulting parties meeting for the project is scheduled for Thursday, May 27 at 3:00 p.m. The meeting will be held virtually. You can join via audio only by calling 202-640-1187 and using the phone conference identification number 571 525 971#. For audio and video components, the meeting can be accessed using this link:

https://urldefense.proofpoint.com/v2/url?u=https-3A_teams.microsoft.com_1_meetup-2Djoin_19-253ameeting-5FMTEzZTFiNmItMjUwYS00ZjYyLWI2ZjAtOGQ3ODQ2ZWVIYzM5-2540thread.v2_0-3Fcontext-3D-257b-2522Tid-2522-253a-25220693b5ba-2D4b18-2D4d7b-2D9341-2Df32f400a5494-2522-252c-2522Oid-2522-253a-25220a5e74c3-2D26d9-2D4282-2D8ef6-2D6d9112be2457-2522-257d&d=DwMFaW&c=TQzoP61-bYDBLzNd0XmHrw&r=Rg9qlQhmc4LbKpoF6tcmHak5ynZ22GY4vKc5RHgDIgG&m=bPKQ SJ4kDSbhYDQ9mn1sAeuqo8_LW00x95GU1AzyRXk&s=hcWrfdyQwKRiF-6DYq_70BRclOEinT8AZirrAHb0L40&e=

I would also like to extend an invitation to you and/or your organization to a site visit to the park to learn more about the Master Plan, upcoming projects, and ongoing baseline documentation being conducted in accordance with the NPS's Section 110 responsibilities. We look forward to coordinating with your organization for a site visit. Please coordinate with Mr. Sam Tamburro, Chief of Cultural Resources, NPS National Capital Area, at 202-619-7146 or via email at sam_tamburro@nps.gov.

Sincerely,

George Liffert
Superintendent

Enclosure: Proposed Area of Potential Effect

Proposed Area of Potential Effect





United States Department of the Interior



NATIONAL PARK SERVICE
Wolf Trap National Park for the Performing Arts
1551 Trap Road
Vienna, VA 22182

May 13, 2021

Mr. Kenneth Branham
Chief
Monacan Indian Nation
P.O. Box 960
Amherst, VA 24521

Subject: Section 106 Consultation for Wolf Trap National Park for the Performing Arts
Master Plan

Dear Mr. Branham:

The National Park Service (NPS) wishes to formally initiate consultation with the Monacan Indian Nation, in accordance with 36 CFR 800.3 of Section 106 of the National Historic Preservation Act of 1966, as amended, regarding the proposed amendment to the 1997 General Management Plan (GMP) for Wolf Trap National Park for the Performing Arts in Vienna, Virginia. The proposed amendment will serve to build upon and adjust elements of the existing GMP to meet the current and future needs of the park. You are invited to participate in a consulting parties meeting for the project scheduled for Thursday, May 27 at 3:00 p.m.

Wolf Trap National Park for the Performing Arts provide opportunities to experience live performances, related educational programs, and associated recreation in a pastoral setting within the National Capital area. The GMP amendment proposes changes to park facilities that would build upon the location's history as the only park established for the performing arts venue in a National Park, while providing modern and unexpected amenities that improve of the visitor and artist experience. The Wolf Trap National Park for the Performing Arts (WOTR) administers the project area.

In accordance with the National Environmental Policy Act (NEPA), the NPS will prepare an Environmental Assessment (EA) that will address this project. The NPS intends to coordinate consultation and NEPA review per Advisory Council on Historic Preservation (ACHP) regulations (36 CFR 800.8) and to consult the public per 36 CFA 800.3(e) in public meetings and through our Planning, Environment, and Public Comment (PEPC) website (<https://parkplanning.nps.gov/>). It is anticipated that these outreach efforts will accommodate both NEPA and the Section 106 processes, although NEPA and the Section 106 processes are on two separate, but parallel tracks.

The proposed Area of Potential Effect is shown in the attached map. However, at this early stage, we are unable to make any determination of effect. The NPS is seeking ways to avoid and minimize the potential for adverse effects on historic properties. Once determined, the NPS will prepare a formal Assessment of Effects for the project.

As mentioned above, you are invited to participate in a consulting parties meeting for the project is scheduled for Thursday, May 27 at 3:00 p.m. The meeting will be held virtually. You can join via audio only by calling 202-640-1187 and using the phone conference identification number 571 525 971#. For audio and video components, the meeting can be accessed using this link:

https://urldefense.proofpoint.com/v2/url?u=https-3A_teams.microsoft.com_1_meetup-2Djoin_19-253ameeting-5FMTEzZTFiNmItMjUwYS00ZjYyLWI2ZjAtOGQ3ODQ2ZWVIYzM5-2540thread.v2_0-3Fcontext-3D-257b-2522Tid-2522-253a-25220693b5ba-2D4b18-2D4d7b-2D9341-2Df32f400a5494-2522-252c-2522Oid-2522-253a-25220a5e74c3-2D26d9-2D4282-2D8ef6-2D6d9112be2457-2522-257d&d=DwMFaW&c=TQzoP61-bYDBLzNd0XmHrw&r=Rg9qlQhmc4LbKpoF6tcmHak5ynZ22GY4vKc5RHgDIgG&m=bPKQ SJ4kDSbhYDQ9mn1sAeuqo8_LW00x95GU1AzyRXk&s=hcWrfdyQwKRiF-6DYq_70BRclOEinT8AZirrAHb0L40&e=

I would also like to extend an invitation to you and/or your organization to a site visit to the park to learn more about the Master Plan, upcoming projects, and ongoing baseline documentation being conducted in accordance with the NPS's Section 110 responsibilities. We look forward to coordinating with your organization for a site visit. Please coordinate with Mr. Sam Tamburro, Chief of Cultural Resources, NPS National Capital Area, at 202-619-7146 or via email at sam_tamburro@nps.gov.

Sincerely,

George Liffert
Superintendent

Enclosure: Proposed Area of Potential Effect

Proposed Area of Potential Effect





United States Department of the Interior



NATIONAL PARK SERVICE
Wolf Trap National Park for the Performing Arts
1551 Trap Road
Vienna, VA 22182

May 13, 2021

Mr. William Harris
Chief
Catabwa Indian Nation
996 Avenue of the Nations
Rock Hill, SC 29730

Subject: Section 106 Consultation for Wolf Trap National Park for the Performing Arts
Master Plan

Dear Mr. Harris:

The National Park Service (NPS) wishes to formally initiate consultation with the Catabwa Indian Nation, in accordance with 36 CFR 800.3 of Section 106 of the National Historic Preservation Act of 1966, as amended, regarding the proposed amendment to the 1997 General Management Plan (GMP) for Wolf Trap National Park for the Performing Arts in Vienna, Virginia. The proposed amendment will serve to build upon and adjust elements of the existing GMP to meet the current and future needs of the park. You are invited to participate in a consulting parties meeting for the project scheduled for Thursday, May 27 at 3:00 p.m.

Wolf Trap National Park for the Performing Arts provide opportunities to experience live performances, related educational programs, and associated recreation in a pastoral setting within the National Capital area. The GMP amendment proposes changes to park facilities that would build upon the location's history as the only park established for the performing arts venue in a National Park, while providing modern and unexpected amenities that improve of the visitor and artist experience. The Wolf Trap National Park for the Performing Arts (WOTR) administers the project area.

In accordance with the National Environmental Policy Act (NEPA), the NPS will prepare an Environmental Assessment (EA) that will address this project. The NPS intends to coordinate consultation and NEPA review per Advisory Council on Historic Preservation (ACHP) regulations (36 CFR 800.8) and to consult the public per 36 CFA 800.3(e) in public meetings and through our Planning, Environment, and Public Comment (PEPC) website (<https://parkplanning.nps.gov/>). It is anticipated that these outreach efforts will accommodate both NEPA and the Section 106 processes, although NEPA and the Section 106 processes are on two separate, but parallel tracks.

The proposed Area of Potential Effect is shown in the attached map. However, at this early stage, we are unable to make any determination of effect. The NPS is seeking ways to avoid and minimize the potential for adverse effects on historic properties. Once determined, the NPS will prepare a formal Assessment of Effects for the project.

As mentioned above, you are invited to participate in a consulting parties meeting for the project is scheduled for Thursday, May 27 at 3:00 p.m. The meeting will be held virtually. You can join via audio only by calling 202-640-1187 and using the phone conference identification number 571 525 971#. For audio and video components, the meeting can be accessed using this link:

https://urldefense.proofpoint.com/v2/url?u=https-3A_teams.microsoft.com_1_meetup-2Djoin_19-253ameeting-5FMTEzZTFiNmItMjUwYS00ZjYyLWI2ZjAtOGQ3ODQ2ZWVIYzM5-2540thread.v2_0-3Fcontext-3D-257b-2522Tid-2522-253a-25220693b5ba-2D4b18-2D4d7b-2D9341-2Df32f400a5494-2522-252c-2522Oid-2522-253a-25220a5e74c3-2D26d9-2D4282-2D8ef6-2D6d9112be2457-2522-257d&d=DwMFaW&c=TQzoP61-bYDBLzNd0XmHrw&r=Rg9qlQhmc4LbKpoF6tcmHak5ynZ22GY4vKc5RHgDIgG&m=bPKQ SJ4kDSbhYDQ9mn1sAeuqo8_LW00x95GU1AzyRXk&s=hcWrfdyQwKRiF-6DYq_70BRclOEinT8AZirrAHb0L40&e=

I would also like to extend an invitation to you and/or your organization to a site visit to the park to learn more about the Master Plan, upcoming projects, and ongoing baseline documentation being conducted in accordance with the NPS's Section 110 responsibilities. We look forward to coordinating with your organization for a site visit. Please coordinate with Mr. Sam Tamburro, Chief of Cultural Resources, NPS National Capital Area, at 202-619-7146 or via email at sam_tamburro@nps.gov.

Sincerely,

George Liffert
Superintendent

Enclosure: Proposed Area of Potential Effect

Proposed Area of Potential Effect





United States Department of the Interior



NATIONAL PARK SERVICE
Wolf Trap National Park for the Performing Arts
1551 Trap Road
Vienna, VA 22182

May 13, 2021

Ms. Kelli Mosteller
Tribal Historic Preservation Officer
Citizens Potawatomi Nation (Oklahoma)
1601 S. Gordon Cooper Drive
Shawnee, OK 74801

Subject: Section 106 Consultation for Wolf Trap National Park for the Performing Arts
Master Plan

Dear Ms. Mosteller:

The National Park Service (NPS) wishes to formally initiate consultation with the Citizens Potawatomi Nation (Oklahoma), in accordance with 36 CFR 800.3 of Section 106 of the National Historic Preservation Act of 1966, as amended, regarding the proposed amendment to the 1997 General Management Plan (GMP) for Wolf Trap National Park for the Performing Arts in Vienna, Virginia. The proposed amendment will serve to build upon and adjust elements of the existing GMP to meet the current and future needs of the park. You are invited to participate in a consulting parties meeting for the project scheduled for Thursday, May 27 at 3:00 p.m.

Wolf Trap National Park for the Performing Arts provide opportunities to experience live performances, related educational programs, and associated recreation in a pastoral setting within the National Capital area. The GMP amendment proposes changes to park facilities that would build upon the location's history as the only park established for the performing arts venue in a National Park, while providing modern and unexpected amenities that improve of the visitor and artist experience. The Wolf Trap National Park for the Performing Arts (WOTR) administers the project area.

In accordance with the National Environmental Policy Act (NEPA), the NPS will prepare an Environmental Assessment (EA) that will address this project. The NPS intends to coordinate consultation and NEPA review per Advisory Council on Historic Preservation (ACHP) regulations (36 CFR 800.8) and to consult the public per 36 CFA 800.3(e) in public meetings and through our Planning, Environment, and Public Comment (PEPC) website (<https://parkplanning.nps.gov/>). It is anticipated that these outreach efforts will accommodate both NEPA and the Section 106 processes, although NEPA and the Section 106 processes are on two separate, but parallel tracks.

The proposed Area of Potential Effect is shown in the attached map. However, at this early stage, we are unable to make any determination of effect. The NPS is seeking ways to avoid and minimize the potential for adverse effects on historic properties. Once determined, the NPS will prepare a formal Assessment of Effects for the project.

As mentioned above, you are invited to participate in a consulting parties meeting for the project is scheduled for Thursday, May 27 at 3:00 p.m. The meeting will be held virtually. You can join via audio only by calling 202-640-1187 and using the phone conference identification number 571 525 971#. For audio and video components, the meeting can be accessed using this link:

https://urldefense.proofpoint.com/v2/url?u=https-3A_teams.microsoft.com_1_meetup-2Djoin_19-253ameeting-5FMTEzZTFiNmItMjUwYS00ZjYyLWI2ZjAtOGQ3ODQ2ZWVIYzM5-2540thread.v2_0-3Fcontext-3D-257b-2522Tid-2522-253a-25220693b5ba-2D4b18-2D4d7b-2D9341-2Df32f400a5494-2522-252c-2522Oid-2522-253a-25220a5e74c3-2D26d9-2D4282-2D8ef6-2D6d9112be2457-2522-257d&d=DwMFaW&c=TQzoP61-bYDBLzNd0XmHrw&r=Rg9qlQhmc4LbKpoF6tcmHak5ynZ22GY4vKc5RHgDIgG&m=bPKQ SJ4kDSbhYDQ9mn1sAeuqo8_LW00x95GU1AzyRXk&s=hcWrfdyQwKRiF-6DYq_70BRclOEinT8AZirrAHb0L40&e=

I would also like to extend an invitation to you and/or your organization to a site visit to the park to learn more about the Master Plan, upcoming projects, and ongoing baseline documentation being conducted in accordance with the NPS's Section 110 responsibilities. We look forward to coordinating with your organization for a site visit. Please coordinate with Mr. Sam Tamburro, Chief of Cultural Resources, NPS National Capital Area, at 202-619-7146 or via email at sam_tamburro@nps.gov.

Sincerely,

George Liffert
Superintendent

Enclosure: Proposed Area of Potential Effect

Proposed Area of Potential Effect





United States Department of the Interior



NATIONAL PARK SERVICE
Wolf Trap National Park for the Performing Arts
1551 Trap Road
Vienna, VA 22182

May 13, 2021

Ms. Erin Paden
Tribal Historic Preservation Officer
Delaware Nation
P.O. Box 825
Anadarko, OK 73005

Subject: Section 106 Consultation for Wolf Trap National Park for the Performing Arts
Master Plan

Dear Ms. Paden:

The National Park Service (NPS) wishes to formally initiate consultation with the Delaware Nation, in accordance with 36 CFR 800.3 of Section 106 of the National Historic Preservation Act of 1966, as amended, regarding the proposed amendment to the 1997 General Management Plan (GMP) for Wolf Trap National Park for the Performing Arts in Vienna, Virginia. The proposed amendment will serve to build upon and adjust elements of the existing GMP to meet the current and future needs of the park. You are invited to participate in a consulting parties meeting for the project scheduled for Thursday, May 27 at 3:00 p.m.

Wolf Trap National Park for the Performing Arts provide opportunities to experience live performances, related educational programs, and associated recreation in a pastoral setting within the National Capital area. The GMP amendment proposes changes to park facilities that would build upon the location's history as the only park established for the performing arts venue in a National Park, while providing modern and unexpected amenities that improve of the visitor and artist experience. The Wolf Trap National Park for the Performing Arts (WOTR) administers the project area.

In accordance with the National Environmental Policy Act (NEPA), the NPS will prepare an Environmental Assessment (EA) that will address this project. The NPS intends to coordinate consultation and NEPA review per Advisory Council on Historic Preservation (ACHP) regulations (36 CFR 800.8) and to consult the public per 36 CFA 800.3(e) in public meetings and through our Planning, Environment, and Public Comment (PEPC) website (<https://parkplanning.nps.gov/>). It is anticipated that these outreach efforts will accommodate both NEPA and the Section 106 processes, although NEPA and the Section 106 processes are on two separate, but parallel tracks.

The proposed Area of Potential Effect is shown in the attached map. However, at this early stage, we are unable to make any determination of effect. The NPS is seeking ways to avoid and minimize the potential for adverse effects on historic properties. Once determined, the NPS will prepare a formal Assessment of Effects for the project.

As mentioned above, you are invited to participate in a consulting parties meeting for the project is scheduled for Thursday, May 27 at 3:00 p.m. The meeting will be held virtually. You can join via audio only by calling 202-640-1187 and using the phone conference identification number 571 525 971#. For audio and video components, the meeting can be accessed using this link:

https://urldefense.proofpoint.com/v2/url?u=https-3A_teams.microsoft.com_1_meetup-2Djoin_19-253ameeting-5FMTEzZTFiNmItMjUwYS00ZjYyLWI2ZjAtOGQ3ODQ2ZWVIYzM5-2540thread.v2_0-3Fcontext-3D-257b-2522Tid-2522-253a-25220693b5ba-2D4b18-2D4d7b-2D9341-2Df32f400a5494-2522-252c-2522Oid-2522-253a-25220a5e74c3-2D26d9-2D4282-2D8ef6-2D6d9112be2457-2522-257d&d=DwMFaW&c=TQzoP61-bYDBLzNd0XmHrw&r=Rg9qlQhmc4LbKpoF6tcmHak5ynZ22GY4vKc5RHgDIgG&m=bPKQSJ4kDSbhYDQ9mn1sAeuqo8_LW00x95GU1AzyRXk&s=hcWrfdyQwKRiF-6DYq_70BRclOEinT8AZirrAHb0L40&e=

I would also like to extend an invitation to you and/or your organization to a site visit to the park to learn more about the Master Plan, upcoming projects, and ongoing baseline documentation being conducted in accordance with the NPS's Section 110 responsibilities. We look forward to coordinating with your organization for a site visit. Please coordinate with Mr. Sam Tamburro, Chief of Cultural Resources, NPS National Capital Area, at 202-619-7146 or via email at sam_tamburro@nps.gov.

Sincerely,

George Liffert
Superintendent

Enclosure: Proposed Area of Potential Effect

Proposed Area of Potential Effect





United States Department of the Interior



NATIONAL PARK SERVICE
Wolf Trap National Park for the Performing Arts
1551 Trap Road
Vienna, VA 22182

May 13, 2021

Subject: Section 106 Consultation for Wolf Trap National Park for the Performing Arts
Master Plan

Dear Sir or Madam,

The National Park Service (NPS) wishes to formally initiate consultation with the , in accordance with 36 CFR 800.3 of Section 106 of the National Historic Preservation Act of 1966, as amended, regarding the proposed amendment to the 1997 General Management Plan (GMP) for Wolf Trap National Park for the Performing Arts in Vienna, Virginia. The proposed amendment will serve to build upon and adjust elements of the existing GMP to meet the current and future needs of the park. You are invited to participate in a consulting parties meeting for the project scheduled for Thursday, May 27 at 3:00 p.m.

Wolf Trap National Park for the Performing Arts provide opportunities to experience live performances, related educational programs, and associated recreation in a pastoral setting within the National Capital area. The GMP amendment proposes changes to park facilities that would build upon the location's history as the only park established for the performing arts venue in a National Park, while providing modern and unexpected amenities that improve of the visitor and artist experience. The Wolf Trap National Park for the Performing Arts (WOTR) administers the project area.

In accordance with the National Environmental Policy Act (NEPA), the NPS will prepare an Environmental Assessment (EA) that will address this project. The NPS intends to coordinate consultation and NEPA review per Advisory Council on Historic Preservation (ACHP) regulations (36 CFR 800.8) and to consult the public per 36 CFA 800.3(e) in public meetings and through our Planning, Environment, and Public Comment (PEPC) website (<https://parkplanning.nps.gov/>). It is anticipated that these outreach efforts will accommodate both NEPA and the Section 106 processes, although NEPA and the Section 106 processes are on two separate, but parallel tracks.

The proposed Area of Potential Effect is shown in the attached map. However, at this early stage, we are unable to make any determination of effect. The NPS is seeking ways to avoid and minimize the potential for adverse effects on historic properties. Once determined, the NPS will prepare a formal Assessment of Effects for the project.

As mentioned above, you are invited to participate in a consulting parties meeting for the project is scheduled for Thursday, May 27 at 3:00 p.m. The meeting will be held virtually. You can join via audio only by calling 202-640-1187 and using the phone conference identification number 571 525 971#. For audio and video components, the meeting can be accessed using this link:

https://urldefense.proofpoint.com/v2/url?u=https-3A_teams.microsoft.com_l_meetup-2Djoin_19-253ameeting-5FMTEzZTFiNmItMjUwYS00ZjYyLWI2ZjAtOGQ3ODQ2ZWVlYzM5-2540thread.v2_0-3Fcontext-3D-257b-2522Tid-2522-253a-25220693b5ba-2D4b18-2D4d7b-2D9341-2Df32f400a5494-2522-252c-2522Oid-2522-253a-25220a5e74c3-2D26d9-2D4282-2D8ef6-2D6d9112be2457-2522-257d&d=DwMFAw&c=TQzoP61-bYDBLzNd0XmHrw&r=Rg9qlQhmc4LbKpoF6tcmHak5ynZ22GY4vKc5RHgDIgG&m=bPKQSJ4kDSbhYDQ9mn1sAeuqo8_LW00x95GU1AzyRXk&s=hcWrfdyQwKRiF-6DYq_70BRclOEinT8AZirrAHb0L40&e=

I would also like to extend an invitation to you and/or your organization to a site visit to the park to learn more about the Master Plan, upcoming projects, and ongoing baseline documentation being conducted in accordance with the NPS's Section 110 responsibilities. We look forward to coordinating with your organization for a site visit. Please coordinate with Mr. Sam Tamburro, Chief of Cultural Resources, NPS National Capital Area, at 202-619-7146 or via email at sam_tamburro@nps.gov.

Sincerely,

George Liffert
Superintendent

Enclosure: Proposed Area of Potential Effect

Proposed Area of Potential Effect



APPENDIX E: PROGRAMATIC AGREEMENT

**PROGRAMMATIC AGREEMENT
AMONG
THE NATIONAL PARK SERVICE,
WOLF TRAP FOUNDATION FOR THE PERFORMING ARTS, AND
VIRGINIA STATE HISTORIC PRESERVATION OFFICE,
REGARDING
WOLF TRAP NATIONAL PARK FOR THE PERFORMING ARTS
MANAGEMENT PLAN**

WHEREAS, the National Park Service (NPS) at the Wolf Trap National Park for the Performing Arts, in cooperation with the Wolf Trap Foundation for the Performing Arts (Foundation), is developing a Management Plan and Environmental Assessment (Plan) for Wolf Trap National Park for the Performing Arts (Park) in Vienna, Virginia to evaluate improvements that will enhance visitor experience, access, circulation, and expanded amenities; and

WHEREAS, the NPS is charged in its administration of the units of the National Park System to meet the directives of other laws, regulations, and policies including the NPS Organic Act as codified in Title 54 United States Code (USC) 100101(a) to “conserve the scenery, natural and historic objects, and wild life in the System’s units and to provide for the enjoyment of the scenery, natural and historic objects, and wild life in such a manner and by such means as will leave them unimpaired for the enjoyment of future generations;” and

WHEREAS, the Park, a unit of the NPS, was established by Congress on October 15, 1966 (80 Stat. 950) for the purpose of providing opportunities to experience live performances, related educational programs, and associated recreation in a pastoral setting within the National Capital area; and

WHEREAS, the Park is an approximately 130-acre park, which was donated by Catherine Filene Shouse, a devotee of the performing arts as the first and only national park for the performing arts; and

WHEREAS, encroaching roads and suburban development inspired Shouse to preserve this former farm as a park where people could enjoy the performing arts and related educational programs in the peacefulness of nature. Shouse donated land for the park, including five existing buildings, and funds towards building the Filene Center outdoor performing arts complex; and

WHEREAS, the Park is located approximately 18 miles west of Washington, DC in northern Virginia and is bordered by VA-267 to the south and residential neighborhoods to the north, east, and west, with Trap Road, an arterial road maintained by the Virginia Department of Transportation, running through the Park; and

WHEREAS, the Foundation, a 501(c)(3) nonprofit organization affiliated with the Park, has been assigned use and maintenance of federal assets within the Park through a Cooperative Agreement with NPS (April 30, 2019 – December 31, 2039); and

WHEREAS, the NPS has determined that implementation of the proposed Plan is an “undertaking” as defined in 36 Code of Federal Regulations (C.F.R.) § 800.16(y), as the adoption of the Plan is under the jurisdiction of the NPS; and

WHEREAS, in accordance with 36 C.F.R § 800.2(a), the NPS is the federal agency with responsibility to comply with Section 106 of the National Historic Preservation Act (NHPA), 54 United States Code (U.S.C.) 306108; and

WHEREAS, the undertaking is described as the Management Plan, the preferred alternative (Alternative B) in the Wolf Trap National Park for the Performing Arts Management Plan and Environmental Assessment prepared pursuant to the National Environmental Policy Act (NEPA). Refer to Attachment A; and

WHEREAS, the purpose of the proposed action is to amend the Wolf Trap National Park for the Performing Arts General Management Plan to achieve the following in a manner that protects park resources and retains the park's cultural landscape, outdoor recreation opportunities, and performing arts experiences in an outdoor setting; improve accessibility, safety, and security features to current industry standards wherever possible; create amenities expected by visitors, patrons attending events, and artists; address long-documented site challenges, such as transportation access, pedestrian circulation, and stormwater management; address deferred maintenance areas; and improve the visitor and patron experience and expand opportunities for year-round park use; and

WHEREAS, the Plan considers vehicle and pedestrian circulation, including accessibility and walkway treatments; visitor and patron facilities, including the Main Gate and Filene Center, Stand A and other support facilities; interpretation and education; administration, operations and safety; and other existing features that are retained in the Plan; and

WHEREAS, the Plan provides an overall framework for management of the Park and identifies projects for implementation, including specific siting, design, and construction methods; and

WHEREAS, the NPS and Foundation anticipate the phased implementation of projects as funds become available; and

WHEREAS, the NPS has consulted with the Virginia State Historic Preservation Office (SHPO), which in Virginia is the Department of Historic Resources (DHR), to define the area of potential effects (APE) for the Plan in accordance with 36 C.F.R § 800.16(d) and has identified the Plan's APE as areas where historic properties will be physically altered; areas of ground disturbance; and areas where new structures will be added as indicated in Attachment B to this Programmatic Agreement (Agreement); and

WHEREAS, the NPS, in consultation with the SHPO, has identified historic properties located within the APE for the Plan, as documented in the report *Wolf Trap National Park for the Performing Arts Management Plan Assessment of Effect* (2021); and

WHEREAS, the NPS has identified the Wolf Trap National Park for the Performing Arts (DHR #029-0159) as a nationally significant historic property potentially eligible for listing in the National Register of Historic Places (NRHP) under Criterion A for its significance as a nationally celebrated performing arts venue; under Criterion B for its association with a significant person, Catherine Filene Shouse, as the place most closely associated with her contributions to American history; and under Criterion C for its architectural design and if it meets the conditions for Criteria Consideration G, with a period of significance between 1930 and 1984; and

WHEREAS, because the Plan is complex, where effects on historic properties cannot be fully determined prior to approval of the Plan, the NPS is using this Agreement to facilitate identification efforts related to the NPS undertaking and resolve potential adverse effects on historic properties in accordance with 36 C.F.R. § 800.14(b)(1)(ii); and

WHEREAS, the NPS, in consultation with the SHPO, has determined that the undertaking will have an adverse effect on the Park due to the addition of travel lanes, new parking, an expanded Main Gate Canopy and Plaza, new walkway treatments, picnic decks, reduction in the size of Main Circle, and the replacement of Stand A; and

WHEREAS, in accordance with 36 C.F.R. § 800.6(c)(1)(i), the NPS, Foundation and SHPO are Signatories to this Agreement (hereafter referenced by name, as Signatory or collectively as Signatories); and

WHEREAS, in accordance with 36 C.F.R. § 800.6(c)(2)(i), the Foundation is an Invited Signatory to this Agreement (hereafter referenced by name or collectively with NPS and SHPO as Signatories); and

WHEREAS, the NPS, in accordance with 36 C.F.R. § 800.2(c)(5) has identified and invited the organizations in Attachment C to participate in consultation on this undertaking; and

WHEREAS, the National Capital Planning Commission (NCPC), the Delaware Nation, and the Monacan Indian Nation have indicated that they want to participate in consultation on this undertaking per 36 C.F.R. § 800.6(c)(3); and

WHEREAS, NCPC is the central planning agency for the federal government in the National Capital Region, and will review all project submissions pursuant to the National Capital Planning Act of 1952 and the NCPC Submission guidelines; and

WHEREAS, NCPC reviewed and provided comments on the Draft Wolf Trap Management Plan, under their advisory authority (40 U.S.C. § 8722(a) and (b)(1)) on December 2, 2021; and

WHEREAS, the NPS, in consultation with the SHPO, Foundation, and Consulting Parties, has sought to avoid and minimize adverse effects from the Plan on historic properties by further consultation with SHPO on the design of Stand A, Main Circle, pedestrian tunnel, and walkway treatments, and the SHPO has reviewed these efforts during consulting parties meetings on May 27, 2021 and October 27, 2021, and shall continue design review in accordance with this Agreement; and

WHEREAS, the NPS has notified the Advisory Council on Historic Preservation (ACHP) via November 9, 2021 email of an adverse effect determination through provision of the Assessment of Effects documentation meeting criteria specified in 36 C.F.R. § 800.11(e), of the intent to create a PA, and issued an invitation to participate in this consultation as an invited signatory and; and hearing no response from the ACHP the NPS has successfully negotiated with Consulting Parties language for an agreement to resolve adverse effects; and ACHP participation under 36 C.F.R. § 800.6(a)(1)(i) is not applicable; and

WHEREAS, the NPS has sought and considered the views of the public on this Plan as evidenced by a public notice and public scoping comment period held 25 May 2021 through 25 June 2021, and a public notice and publication of an Environmental Assessment (EA) was released 17 November

2021, prepared and issued as part of NPS's compliance with the National Environmental Policy Act that describes potential impacts to historic properties and requests the public's comments, and NPS received these comments over a 30-day period and replied to them as documented in the Finding of No Significant Impact.

NOW, THEREFORE, the NPS, the Foundation, and the SHPO agree that the undertaking shall be implemented in accordance with the following stipulations and processes in order to take into account the effect of the undertaking on historic properties.

STIPULATIONS

The NPS shall ensure that the following measures are carried out:

A. AVOIDANCE AND MINIMIZATION

1. The NPS has made efforts to minimize the Plan's adverse effect on historic properties in the following manner:
 - a. Adaptation of walkway treatments to include vegetation and discontinuous structures that are compatible with the character and setting of the Park and to preclude continuous structures.
 - b. Continuation of existing road grades at new pedestrian tunnel.
 - c. Continued vegetation at Main Circle.
 - d. Maintained vegetated Main Circle through placement of accessible parking south of Main Circle.
 - e. Reduction in the massing of the proposed replacement of Stand A from initial concepts to the current concept, which is illustrated in Attachment A.
 - f. Location of Stand B at edge of cluster arrangement.
 - g. Placement of new structures, including Stand B and picnic decks, to avoid disturbance of contributing features identified in the *Wolf Trap National Park for the Performing Arts Cultural Landscape Report*, including vegetation and pastoral character, interruption of viewsheds, and disruption of cluster developments.
 - h. Rehabilitation of contributing buildings (except Stand A) and addition of new accessible picnic decks in a manner that is consistent with *The Secretary of the Interior's Standards and Guidelines for the Treatment of Historic Properties and Cultural Landscapes*.
 - i. The bridge replacement, surface materials for the updated walkways, rehabilitation of the Associate's Building and Cabin, and small-scale improvements (i.e., signage) will be undertaken in a manner that is consistent with *The Secretary of the Interior's Standards and Guidelines for the Treatment of Historic Properties and Cultural Landscapes*.
 - j. The NPS will avoid disturbing known historic and archeological resources during design and construction to the extent practicable.
 - k. The NPS will minimize ground-disturbing activities to the extent practicable during the construction phase, including using existing paved areas for equipment and construction methods that minimize land disturbance.

The above minimization efforts shall be reflected in the undertaking final design plans for improvements on NPS lands.

B. MITIGATION

1. As projects under the Plan are implemented, if the NPS and the Foundation determines if a new adverse effect may result or a known adverse effect on a historic property would be intensified, as described in Stipulation C(1)(e), the NPS and Foundation shall consult with Signatories to identify measures to avoid, minimize, and mitigate the adverse effects. Such consultation may include, but not be limited to written correspondence, conference calls, meetings, or site visits.
2. The NPS and Foundation will document the mitigation measures identified through the consultation and distribute them with an amendment to this agreement, or a new agreement, to the Signatories for a 30-day review and comment period.
3. Mitigation measures may include, but are not limited, to the following
 - a. New features will be compatible with the property's historic resources and character. New buildings and structures will have a compatible character, use neutral or dark earth tones, and be sited to minimize their appearance in the landscape.
 - b. If contributing buildings or structures within the site are altered, removed, or replaced in a manner that results in an adverse effect, the NPS and the Foundation will conduct Historic American Buildings Surveys (HABS) to record the resources. The NPS will provide a copy to DHR.
 - c. The NPS and the Foundation will conduct a Level III HABS, as defined by *The Secretary of the Interior's Standards and Guidelines for Architectural and Engineering Documentation*, of Stand A prior to replacement of the structure.
 - d. The NPS will complete a Cultural Landscape Report for Wolf Trap National Park for the Performing Arts.
 - e. The NPS will load historic properties data into the Virginia Cultural Resources Information System (VCRIS).

C. DESIGN CONSULTATION

1. As projects under the Plan are implemented, the NPS and the Foundation will coordinate with the SHPO and consulting parties to provide a design review. The NPS shall review the proposed design documentation at the 30%, 70%, and 95% design phases for consideration and consultation as follows:
 - a. The NPS shall review the proposed design documentation focusing on any changes from the preliminary concepts and make a determination as to whether the proposed design may result in new adverse effects that have not already been resolved and/or the intensification of known adverse effects on historic properties.
 - b. The NPS shall forward, via electronic media, its determination in Stipulation C.1(a), and the proposed design for consideration and consultation to the Signatories for a 30-day review and comment period.
 - c. If the NPS determines that no new adverse effects may result or no known adverse effects on historic properties would be intensified, and no Signatories object within the 30-day review period, the NPS shall proceed with the next phase of design or construction.
 - d. If the NPS determines that no new adverse effects may result or no known adverse effects on historic properties would be intensified and a Signatory objects in writing within the 30-day

review period, the NPS shall notify the Signatories and the Signatories shall consult to seek ways to resolve the objection. If the NPS determine that the objection cannot be resolved, the NPS shall follow the procedures in the Dispute Resolution clause of this Agreement.

- e. If the NPS determines that a new adverse effect may result or a known adverse effect on a historic property would be intensified, the NPS shall immediately notify the Signatories and other consulting parties and will work to revise the design documentation to avoid, minimize, or mitigate the new or intensified adverse effect and to submit a revised design documentation package for review. The NPS shall reevaluate to determine whether new or intensified adverse effects remain. If unavoidable adverse effects on historic properties may result or be intensified, the NPS shall consult with the Signatories, as described in Stipulation B (1), to determine whether the proposed design documentation warrants an Amendment to this Agreement, or a new agreement as described in Stipulation B (2), that would identify additional measures that will be carried out to avoid, minimize, or mitigate any new or intensified adverse effects.
- f. If the Agreement is amended, or a new agreement is developed, the NPS shall notify the Consulting Parties and provide or post the Amendment on the NPS's Planning, Environment and Public Comment PEPC site. Otherwise, the NPS shall submit the proposed design documentation to the NCPC for their formal review, as appropriate.

D. ARCHEOLOGY

- 1. For each Plan element on NPS lands involving ground disturbance, the NPS shall consult with the SHPO and other Consulting Parties, as appropriate, to review the previous archeological surveys of the area to determine if adequate information exists to assess project effects. If the NPS determines in consultation with the SHPO and other Consulting Parties that further identification efforts are needed, the NPS shall ensure that an archeological survey program for identification of archeological sites is developed. Prior to affecting any potentially eligible archeological site, the NPS shall develop a testing program of sufficient intensity to provide an evaluation of eligibility for the NRHP in consultation with SHPO and other Consulting Parties, following the regulations outlined in 36 C.F.R. § 800.4(c).
- 2. All investigations will follow the DHR's *Guidelines for Conducting Historic Resources Survey in Virginia* (2017) as well as the *Secretary of the Interior's Standards and Guidelines for Archaeology and Historic Preservation* (1983) and will be conducted under the direct supervision of an archeologist that meets or exceeds the pertinent qualifications in the Secretary of the Interior's *Professional Qualifications Standards* (48 FR 44738-39).
- 3. If, as a result of the testing program, archeological sites are identified within the Plan APE that are determined eligible for the NRHP, the NPS shall develop a plan for their avoidance, protection, mitigation, or recovery of information in consultation with the SHPO and other Consulting Parties. Prior to implementation, the plan shall be submitted to the SHPO and other Consulting Parties for a 30-calendar day review and comment period starting upon receipt.
- 4. All data recovery plans prepared under the terms of this Agreement shall include the following elements:
 - a. Information on the archeological property or properties where data recovery is to be carried out, and the context in which such properties are eligible for the NRHP;
 - b. Information on any property, properties, or portions of properties that will be destroyed without data recovery;

- c. Discussion of the research questions to be addressed through the data recovery with an explanation / justification of their relevance and importance;
 - d. Description of the recovery methods to be used, with an explanation of their pertinence to the research questions; and
 - e. Information on arrangements for any regular progress reports or meetings to keep the SHPO and other Consulting Parties up to date on the course of the work. The plan should contain the expected timetable for excavation, analysis, and preparation of the final report.
 - f. A plan for public dissemination of the information.
 - g. The NPS shall ensure that the approved treatment plan or data recovery plan is implemented prior to those project activities that could affect the archeological site(s).
5. The NPS shall notify the SHPO and the other Consulting Parties in writing once the fieldwork portion of the treatment plan or data recovery plan is complete and provide a brief management summary so that a site visit may be scheduled, if requested. Project activities may proceed following this notification while the technical report is in preparation. The NPS may proceed with implementation of construction or construction related ground disturbing activities in the area and within the boundary of the affected archeological site(s) while the technical report is in preparation.
 6. The NPS shall submit for a 30-day review and comment period a draft of all archeological reports, treatment plans, and other documentation to the SHPO in one bound hardcopy and one electronic copy in Adobe® Portable Document Format and one copy in an agreed upon format to other Consulting Parties (as appropriate and per the requirements of protecting sensitive site information as noted in Section 304 of the National Historic Preservation Act and in the Archeological Resources Protection Act [ARPA]). Section 304 of the NHPA protects certain sensitive information about historic properties from disclosure to the public when such disclosure could result in significant invasion of privacy, damage to historic property, or impede the use of a traditional religious site by practitioners. ARPA provides authority to limit information on the "nature and location" of archeological resources. Archeological survey data will be loaded into VCRIS.
 7. The SHPO and other Consulting Parties agree to provide comments on all technical reports, treatment plans, and other documentation arising from this Agreement within 30 calendar days of receipt. If no comments are received from the SHPO or other Consulting Parties within the 30-day review period, the NPS may assume the nonresponding party has no comments.
 8. The NPS shall include provisions in the construction permit and documents for the treatment of unanticipated archeological discoveries, including human remains, during excavation, construction, or other ground-disturbing activities resulting from the Plan. In the event of an unanticipated discovery, the following stipulations shall occur:
 - a. In the event that a previously unidentified archeological resource is discovered during activities in the APE, the NPS shall immediately halt all ground-disturbing activities in the area of the resource and in the surrounding area where further subsurface remains can reasonably be expected to occur.
 - b. The NPS shall notify the SHPO, Delaware Nation, and Monacan Indian Nation by email and by telephone immediately upon discovery of previously unidentified archeological resources. The NPS, or its representatives, shall visit the site within 48 hours of such notification, inspect the work site, and determine the nature and extent of the affected archeological

property and establish a resource area. Construction may then continue outside the newly established boundaries of the resource area.

- c. Within three working days of the original notification of discovery, the NPS, in consultation with the SHPO and other Consulting Parties, shall determine whether the resource is potentially eligible for listing on the NRHP.
 - d. The NPS, in consultation with the SHPO and other Consulting Parties, shall ensure compliance with 36 C.F.R. § 800.13. Work in the resource area shall not proceed until either: (a) the development and implementation of appropriate data recovery or other recommended mitigation procedures; or (b) the determination is made that the located archeological remains are not eligible for inclusion in the NRHP.
 - e. The NPS shall ensure that all investigations are conducted under the direct supervision of an archeologist who meets or exceeds the pertinent qualifications in the Secretary of the Interior's Professional Qualifications Standards (48 FR 44738-39).
 - f. All associated reports will meet contemporary professional standards, according to the Department of the Interior's *Format Standards for Final Reports of Data Recovery Programs* (42 FR 5377-79), and also meet the standards as set out in the DHR's *Guidelines for Conducting Historic Resources Survey in Virginia* (2017), as appropriate.
9. The NPS shall make all reasonable efforts to avoid disturbing gravesites and associated funerary artifacts. The NPS shall treat all human remains in a manner consistent with the ACHP's "Policy Statement Regarding Treatment of Burial Sites, Human Remains and Funerary Objects" (February 23, 2007; www.achp.gov/docs/hrpolicy0207.pdf) or ACHP policy in effect at the time remains and funerary artifacts are handled.
- a. The NPS shall contact law enforcement and emergency personnel as appropriate in the jurisdiction where the human remains are discovered. The NPS shall immediately notify the SHPO of the discovery of human remains. The NPS shall ensure that all ground-disturbing activities in the immediate area of the discovery ceases immediately and will notify appropriate law enforcement officials.
 - b. If the remains are determined to be of Native American origin, the NPS shall comply with the provisions of the Native American Graves Protection and Repatriation Act, 25 U.S.C. § 3001 et seq. and the accompanying regulations at 43 C.F.R. Part 10. If the remains appear to be of historic, but not Native American, origin, the NPS will consult with the SHPO and other Consulting Parties as appropriate on the appropriate treatment.
 - c. The NPS shall use reasonable efforts to ensure that the public is excluded from viewing any burial site or associated funerary artifacts. Subject to applicable law, the SHPO, and the Consulting Parties to this Agreement shall release no photographs or images of any burial site or associated funerary artifacts to anyone, including the press and the public. If they do release such photographs or images, accidentally, voluntarily, or pursuant to applicable law, they shall notify the NPS and the other Consulting Parties as soon as possible. The NPS shall notify the appropriate federally recognized tribes when burials, human skeletal remains, or funerary artifacts are encountered on the project.

E. ADMINISTRATION

1. **Annual Reports.** By January 31 of each year during which this Agreement remains in effect, the NPS shall update the Signatories and the Consulting Parties on the actions taken to implement the terms of this Agreement. The update will take the form of a Report submitted on an annual

basis. The Annual Report shall include information regarding activities undertaken pursuant to this Agreement and information on the overall status of the Plan.

2. **30-day Review Period.** The SHPO, Foundation, and other Consulting Parties agree to respond to all requests for review from the NPS within a 30-day review and comment period unless otherwise specified in this Agreement. If the SHPO, Foundation, or other Consulting Parties do not respond within the 30-day review period, the NPS may move forward with the project in accordance with its determination and/or proposed plans.
3. **Duration.** This Agreement shall be valid for a period of ten (10) years from the date of execution by the last Signatory. At any time in the 6-month period prior to such date, the NPS may request the SHPO and Foundation to consider an extension or modification of this Agreement. No extension or modification shall be effective unless all signatory parties to this Agreement have agreed with it in writing.
4. **Dispute Resolution.**
 - a. Should any Signatory or Consulting Party object in writing to the NPS regarding any action carried out or proposed in accordance with this Agreement, the NPS shall consult with the Party to resolve the objection. Should the NPS be unable to resolve the disagreement, the NPS shall forward its background information on the dispute as well as NPS's proposed resolution of the dispute to the ACHP. Within 45 business days after receipt of all pertinent documentation, the ACHP shall provide the NPS with written recommendations, which the NPS shall consider in reaching a final decision regarding the dispute or notify the NPS that it shall comment pursuant to 36 C.F.R. § 800.7(c) and then proceed to comment. The NPS shall take the ACHP comments into account, in accordance with 36 C.F.R. § 800.7(c)(4). Any ACHP recommendation or comment shall be understood to pertain only to the subject matter of the dispute; the NPS's responsibility to carry out all actions under this Agreement that are not subjects of the dispute shall remain unchanged.
 - b. At any time during implementation of the measures stipulated in this Agreement, should an objection pertaining to this Agreement or the effect of the Plan on historic properties be raised by a member of the public, the NPS shall notify the other signatories and Consulting Parties and attempt to resolve the objection. If the NPS determines that the objection cannot be resolved, the NPS shall prepare a written response that takes into account any timely advice or comments regarding the dispute from the ACHP, signatories, and concurring parties and provide the objecting member of the public with a copy of this written response. The NPS will then proceed according to its final decision.
5. **Amendments.** This Agreement may be amended when an Amendment is agreed to in writing by all Signatories. The Amendment will be effective on the date it is signed by all of the signatories and filed with the ACHP. If the Signatories cannot agree to appropriate terms to amend the Agreement, any Signatory may terminate the Agreement in accordance with Stipulation E.6.
6. **Termination.** If any Signatory to this Agreement determines that the terms of the Agreement cannot be or are not being carried out, that party shall so notify the other Signatories in writing and consult with them to seek resolution or Amendment of the Agreement. If within sixty (60) business days a resolution or Amendment cannot be reached, any Signatory may terminate the Agreement upon written notification to the other Signatories. Once the Agreement is terminated, and prior to work continuing on the Plan, the NPS must either execute a new Agreement or request, take into account, and respond to the comments of the ACHP per 36 C.F.R. § 800.7. The

NPS is not required to select the same option recommended by the ACHP. The NPS will notify the Signatories as to the course of action it will pursue.

- a. In the event that this Agreement is terminated, the NPS shall submit to the SHPO and the other Consulting Parties a technical report with the results of any surveys or treatment measures that have been implemented to date, up to and including the date of termination.
7. **Anti-Deficiency Act.** The obligations of federal agencies under this Agreement are pursuant to 31 U.S.C. § 1341(a)(1); therefore, nothing in this Agreement shall be construed as binding the United States to expend in any one fiscal year any sum in excess of appropriations made by Congress for this purpose, or to involve the United States in any contract or obligation for the further expenditure of money in excess of such appropriations.
8. **Emergencies.** Should an emergency situation occur that represents an imminent threat to public health or safety or creates a hazardous condition, after the NPS learns of it and notifies appropriate law enforcement and emergency personnel as necessary, the NPS shall immediately notify the appropriate Signatories and the ACHP of the condition that has initiated the situation and the measures taken to respond to it. Should the SHPO or the ACHP desire to provide technical assistance to the NPS, they shall submit comments to the NPS within 7 calendar days from notification, if the nature of the emergency or hazardous condition allows for such coordination.
9. **Electronic Copies.** Within one (1) week of the last signature on this Agreement, the NPS shall provide each Signatory and Consulting Party with one legible, color, electronic copy of this fully executed Agreement and all of its attachments. Internet links shall not be used as a means to provide copies of attachments because web-based information often changes. If the electronic copy is too large to send by email, the NPS shall provide each Signatory and Consulting Party with a copy of this Agreement on a compact disc.
10. **Completion.** Upon the completion of all stipulations to this Agreement, the NPS shall provide to the signatories and other Consulting Parties a signed memorandum documenting that the NPS has fulfilled all its responsibilities under this Agreement.

ATTACHMENTS

Attachment A: Project Area and NPS Selected Alternative

Attachment B: Area of Potential Effects

Attachment C: List of Consulting Parties

SIGNATURES FOLLOW ON SEPARATE PAGES

Programmatic Agreement
Wolf Trap National Park for the Performing Arts Management Plan

NATIONAL PARK SERVICE



12/29/21

Ken Bigley
Acting Superintendent
Wolf Trap National Park for the Performing Arts
National Park Service

Date

Programmatic Agreement
Wolf Trap National Park for the Performing Arts Management Plan

WOLF TRAP FOUNDATION FOR THE PERFORMING ARTS

A handwritten signature in dark ink, appearing to read 'Arvind Manocha', written over a horizontal line.

Arvind Manocha, President and CEO
Wolf Trap Foundation for the Performing Arts

Dec 29, 2021

Date

VIRGINIA STATE HISTORIC PRESERVATION OFFICE



12/30/2021

Julie V. Langan, Director
Department of Historic Resources and State Historic Preservation Officer

Date

EXISTING STRUCTURES

- A** Filene Center
- B** Box Office Trailer
- C1** Main Gate
- D** Administration Building
- E** Encore Circle Lounge and Outdoor Pavilion
- F** Barn
- G** Ovations Restaurant and Outdoor Pavilion
- H** Meadow Pavilion
- I** Pedestrian Tunnel
- J** Cart Bridge (FHWA Trail Bridge #2)
- K** Terrace Pavilion
- R** Farm Pond Bridge

CHANGES TO EXISTING STRUCTURES

- C2** Main Gate Canopy
- L** Children's Theatre-in-the-Woods
- M** Stand A Building
- N** Meadow Restroom
- O** Pedestrian Bridge (FHWA Trail Bridge #1)
- P** Cabin
- Q1** Associates Building and Outdoor Pavilion

NEW STRUCTURES

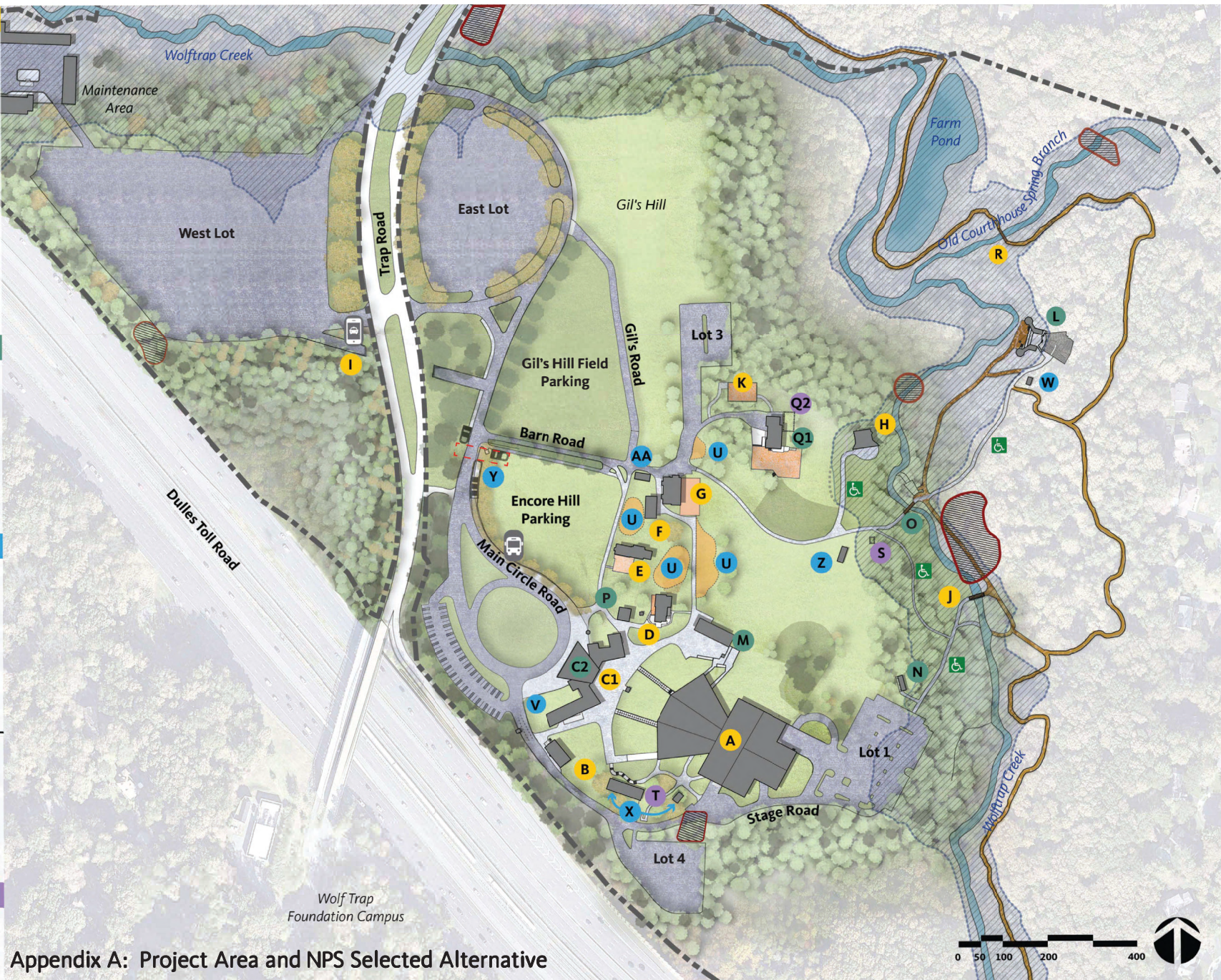
- U** Picnic Deck
- V** Security Perimeter
- W** Children's Theatre-in-the-Woods Restroom
- X** Stand B Building and Restroom
- Y** New Pedestrian Tunnel
- Z** Kiosk and Restroom
- AA** Hub

EMOVED STRUCTURES

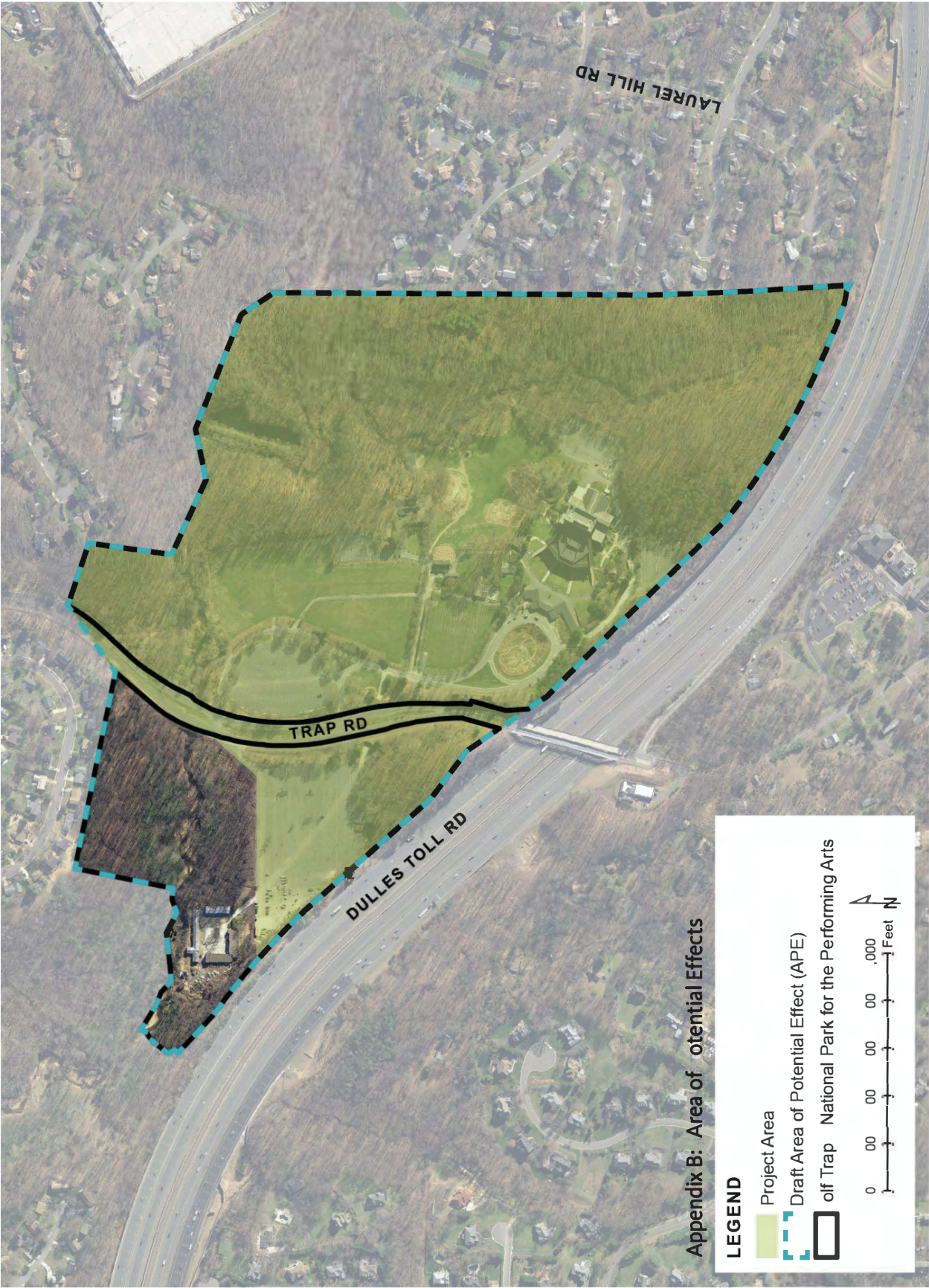
- Q2** Interpretation Staff Offices Trailer
- S** Meadow Kiosk
- T** South Gate Service Stand

Legend:

- Streambank Stabilization and Trail Segment Realignment
- 100-Year Floodplain
- Rideshare
- Shuttle Pick Up & Drop-off
- New Accessible Path
- Park Boundary



Appendix A: Project Area and NPS Selected Alternative



Appendix B: Area of Potential Effects

LEGEND

Project Area

Draft Area of Potential Effect (APE)

National Park for the Performing Arts



Appendix C: Wolf Trap National Park for the Performing Arts Management Plan List of Consulting Parties

Virginia State Historic Preservation Office

Mattaponi Indian Tribe

Nottoway Indian Tribe of Virginia

Cheroenhaka Nottoway Nation

Patawomeck Indian Tribe of Virginia

Pamunkey Indian Tribe

Upper Mattaponi Indian Tribe

Rappahannock Tribe

Nansemond Indian Nation

Chickahominy Indian Tribe

Chickahominy Tribe Eastern Division

Monacan Indian Nation

Catabwa Indian Nation

Citizens Potawatomi Nation (Oklahoma)

Delaware Nation

National Capital Planning Commission