

Lake Meredith National Recreation Area

National Park Service
U.S. Department of the Interior



Project Scoping

February 4, 2009

Lake Meredith National Recreation Area (NRA) is proposing the development of a multi-user trail within the park, Hutchinson and Potter Counties, Texas.

Panhandle weather patterns continue to be unfavorable in producing adequate rains within the watershed of Lake Meredith. As the lake level continues to drop, the staff at Lake Meredith NRA is addressing the need for the development of alternative, land based recreational activities.

The long-term goal for trail development is between Fritch Fortress and South Turkey Creek. Construction of the multi-use trail would be in four phases: Phase one would be from Harbor Bay to Fritch Fortress; Phase two would go from Harbor Bay, southwest toward Short Creek; Phase three would continue from Short Creek to the entrance of South Turkey Creek; Phase four would go from the mouth of South Turkey Creek up the canyon.

The trail head for the proposed trail would be located at Harbor Bay, in order to utilize existing park infrastructure (paved access road and parking, outbacks, and picnic tables). The trail would be primitive with no hardened surfaces. Erosion control measures would be installed with the trail where needed.

At this time, the Superintendent is announcing a 30-day public scoping period to solicit public comments on this proposal prior to the Recreation Area completing an environmental analysis of the proposal.

As the superintendent of Lake Meredith National Recreation Area, I invite you to participate in this scoping process.

Sincerely,

Cindy Ott-Jones, Superintendent

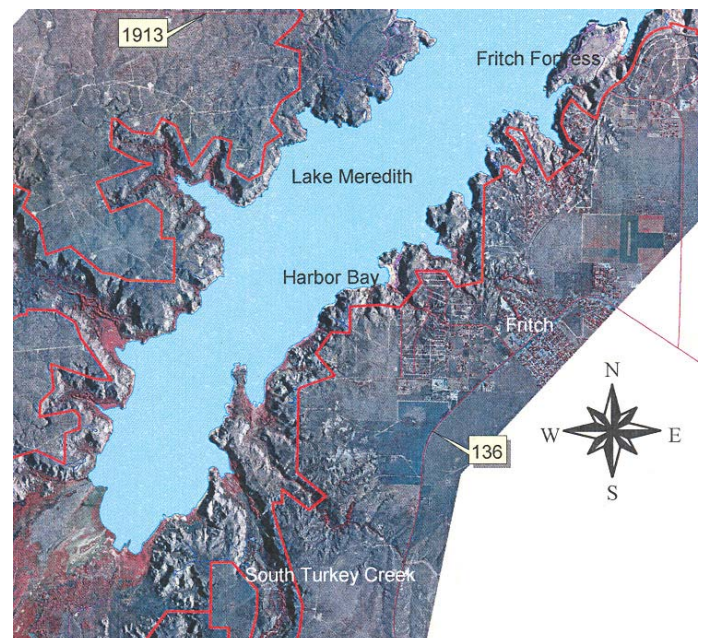
Overview of the Process

Project milestones include:

- Public scoping period (closes March 5, 2009)
- Preparation of Environmental Assessment
- Public review of Environmental Assessment
- Analysis of public comment
- Preparation of decision document
- Announcement of decision on proposal

What does the scoping period mean? Scoping is done in the initial phase of a project to seek input from a variety of sources. The input is used to identify issues, areas requiring additional study, and topics that will be analyzed in the EA process. This is an opportunity for you to provide us with your suggestions, comments, and concerns regarding this oil and gas project at Lake Meredith.

Is scoping my only opportunity to comment on the project? No, once the EA is developed, the document will be made available for public review for a 30-day period.



General location (Fritch Fortress to South Turkey Creek) of the proposed trail within Lake Meredith National Recreation Area

Resources and Concerns

Initial internal project scoping identified the following resources and other concerns for consideration in the Environmental Assessment (EA).

Air quality
Visitor Use and Experience
Geology resources

Vegetation
Health and Safety
Park Operations

Alternatives

Initial internal project scoping identified the following alternatives for consideration in the EA.

1. No action (a new multi-use trail would not be constructed)
2. Lake Meredith National Recreation Area's proposal to develop a new multi-user trail

Please let us know by March 5, 2009:

1. Do you have ideas to share about the resources and concerns, or are there additional resources and concerns that you think we should consider?
2. Are there any other alternatives that you think should be considered?
3. Do you have other comments and suggestions for us to consider in the Environmental Assessment?

If you wish to comment on the scoping brochure or on any other issues associated with the project, you may submit your comments in the following ways:

- You may submit comments electronically at the National Park Service's Planning, Environment, and Public Comment (PEPC) website at <http://parkplanning.nps.gov>
- Or, you may submit written comments to:
Superintendent, Lake Meredith National Recreation Area
P.O. Box 1460
Fritch, TX 79036
- Or, you may hand-deliver comments to Lake Meredith National Recreation Area, 419 Broadway, Fritch, TX.

If you wish to be added to the park's mailing address for this and other announcements, please be sure to indicate that in your response.