



Cape Hatteras National Seashore

Cape Hatteras Lighthouse Rehabilitation and Restoration



Public Scoping Meetings
September 2021



Welcome!

- Introductions
- Presentation
 - Project Background & Objectives
 - Preliminary Alternatives
 - How to Engage and Schedule
- Question and Answer Session



QUESTIONS and COMMENTS

Questions or comments verbally submitted this evening will not be considered formal comments on the project.

To provide comments on the project, please visit:

https://parkplanning.gov/caha_lighthouse

Follow the link for this project and click 'Open for Comment'



Background

- 1870
- Tallest brick lighthouse
- National Register of Historic Places (1978)
- National Historic Landmark District (1998)
- In 1999, moved 2,900 feet



Cape Hatteras Lighthouse



Project Objectives

Rehabilitate and restore interior and exterior elements of the National Historic Landmark lighthouse and its character-defining features.





Key Issues

- Metal work
- Paint
- Masonry and mortar
- Stone flooring
- Windows
- Missing Character Defining Features























Some modern features are “non-sympathetic”



Modern beacon



Modern door and
shade canopy at the
oil house



Grates installed over
some windows



Examples of missing character defining features and nonconforming modifications:

- Window pediments
- Fresnel Lens and pedestal
- Cast iron fence around lighthouse
- Interior wooden doors



Cape Hatteras National Seashore

Cape Hatteras Lighthouse Rehabilitation and Restoration

National Park Service
US Department of the Interior



CAHA 00000135
07/16/2010





Cape Hatteras National Seashore

Cape Hatteras Lighthouse Rehabilitation and Restoration

National Park Service
US Department of the Interior



Modern Beacon and Lantern Room





Project Objectives

Landscape and Visitor Circulation:







Preliminary Alternatives

- Alternative 1: No Action
- Alternative 2:
Improvements to
Landscape and Lens
- Alternative 3:
Comprehensive
Improvements





Alternative A: No Action

- No repairs
- No changes to landscape or circulation
- Existing light beacon remains (or replaced with another modern beacon)



Common to all Action Alternatives

Restoring and rehabilitating the Lighthouse and Oil House to remove non-historic features and replace historic elements. Other proposed actions include:

- Masonry repair
- Painting
- Marble floor tile
- Metal repairs or fabrication
- Restore missing doors and window pediments
- Oil House restoration



Common to all Action Alternatives

- Adding replica stockade fencing around the Keepers' Quarters
- Adding interpretive elements, such as educational displays around the landscape

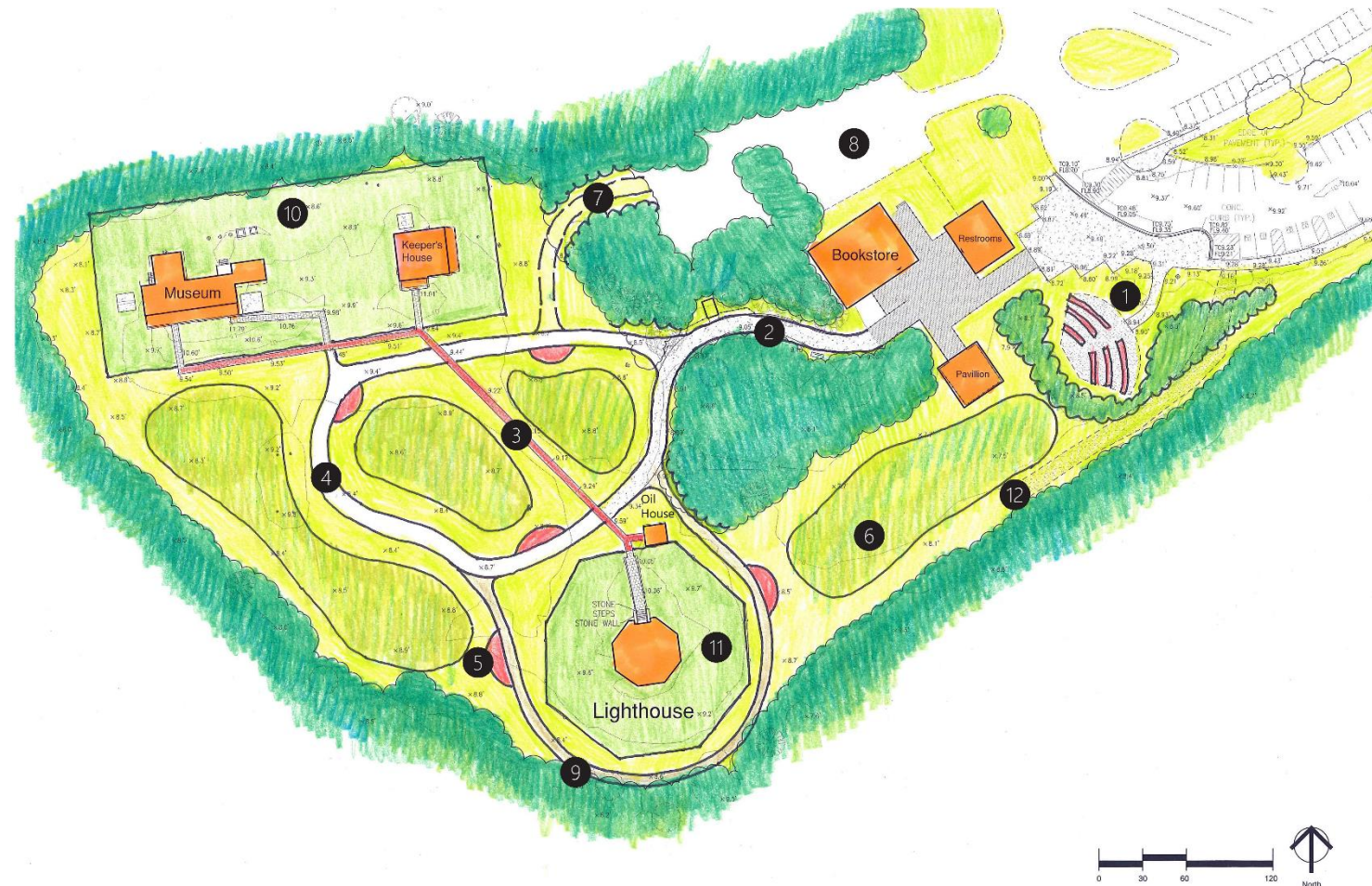


Alternative 2: Improvements to Landscape and Lighthouse Lens

- New pedestrian paths
- Plantings and landscape improvements
- Reproduction of the original Fresnel lens and replacing the existing modern beacon



Alternative 2: Improvements to Landscape and Lighthouse Lens

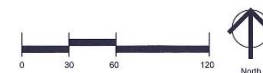


Legend

- 1 Retain Keeper's Memorial
- 2 Retain Concrete Walkway
- 3 Retain 4' Wide Paver Walkway
- 4 12' Concrete Walkway
- 5 Visitor Interpretive Station (TYP)
- 6 Mowing Reduced (TYP)
- 7 EMT/ Maintenance Access
- 8 Maintain Staff Parking
- 9 6' Min. Pervious Paving
- 10 Reconstructed Wood Fence
- 11 Reconstructed Metal Fence
- 12 EMS/ Maintenance Access to Remain

Note

Location and scale of all improvements are approximate and subject to refinement during future design phases.





Alternative 3: Comprehensive Improvements

- Multiple new pedestrian paths and adding a shade pavilion
- Sculpting gently raised berms to restore the natural landscape
- Partially or completely restoring the original Fresnel lens and reinstalling with a new modern light source.



Alternative 3: Comprehensive Improvements



Legend




- 1 Re-purpose Keeper's Stones
- 2 Replace Concrete Walkway (Colored)
- 3 Widen Paver Walkway to 7'
- 4 Lighthouse Tour Shade Structure
- 5 12' Colored Concrete Walkway
- 6 Visitor Interpretive Station (TYP)
- 7 Natural Landforms and Native Plantings (TYP)
- 8 New Visitor Entrance
- 9 Pedestrian Connection
- 10 Reconstructed Wood Fence
- 11 Reconstructed Metal Fence
- 12 Visitor Exit
- 13 EMS/ Maintenance Access to Remain

Note

Location and scale of all improvements are approximate and



Planning Process and Timeline

Milestone		Targeted Schedule
Scoping	<div>We are here</div> 	Fall 2021
Environmental Assessment (EA)		Late 2021
Public Review		Early 2022
Decision Document		Spring 2022



How to Comment

1. Submit comments electronically at:
https://parkplanning.nps.gov/caha_lighthouse
2. Mail or hand-deliver written comments to Seashore headquarters:
Cape Hatteras Lighthouse Rehabilitation
Superintendent
Cape Hatteras National Seashore
1401 National Park Drive
Manteo, NC 27954

Comments must be
submitted by
October 17, 2021



How To Provide Feedback

- Comments should be clear, concise, and relevant to the issues.
- Comments that contribute to developing alternatives that address the purpose and need for the action are also effective.
- Commenting is not a form of “voting” on an alternative.
- Project website has instructions for submitting comments:

https://parkplanning.nps.gov/caha_lighthouse



Thank You!

Questions

