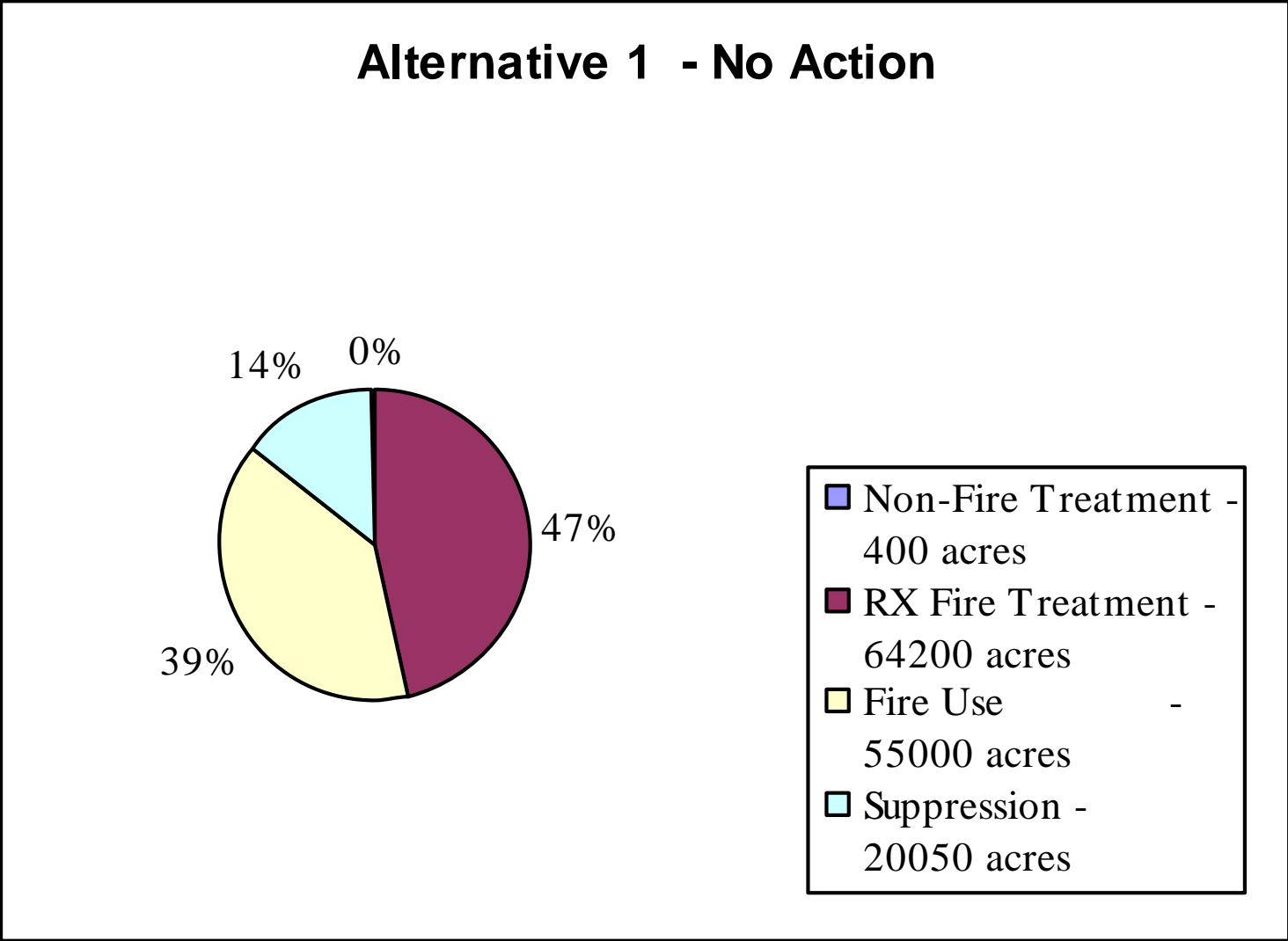




Fire Management Plan Description of Fire Management Alternatives

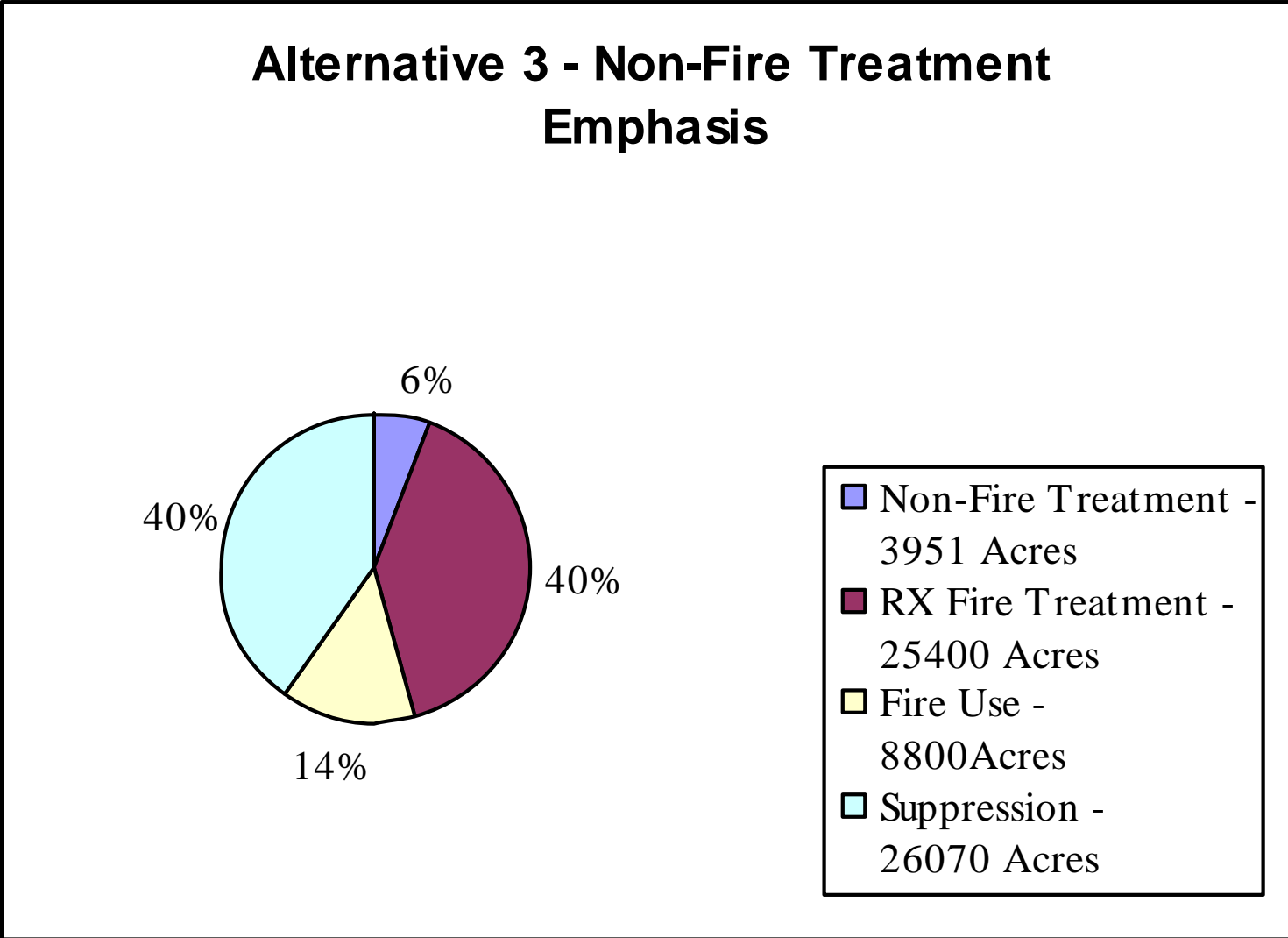
Alternative 1 –No Action

- ✓Continued use of three existing fire management units
- ✓Continue the existing direction of GRCA's Fire Management Program
- ✓Similar or slightly higher level of suppression fire would occur as occurred 1993-2005
- ✓Prescribed fire would result in annual average of 5,840 acres
- ✓Annual acres managed as Wildland Fire Use is expected increase as natural fire regimes are restored
- ✓Manual fuel reduction treatments would continue in the Wildland Urban Interface at an annual average of 40 acres



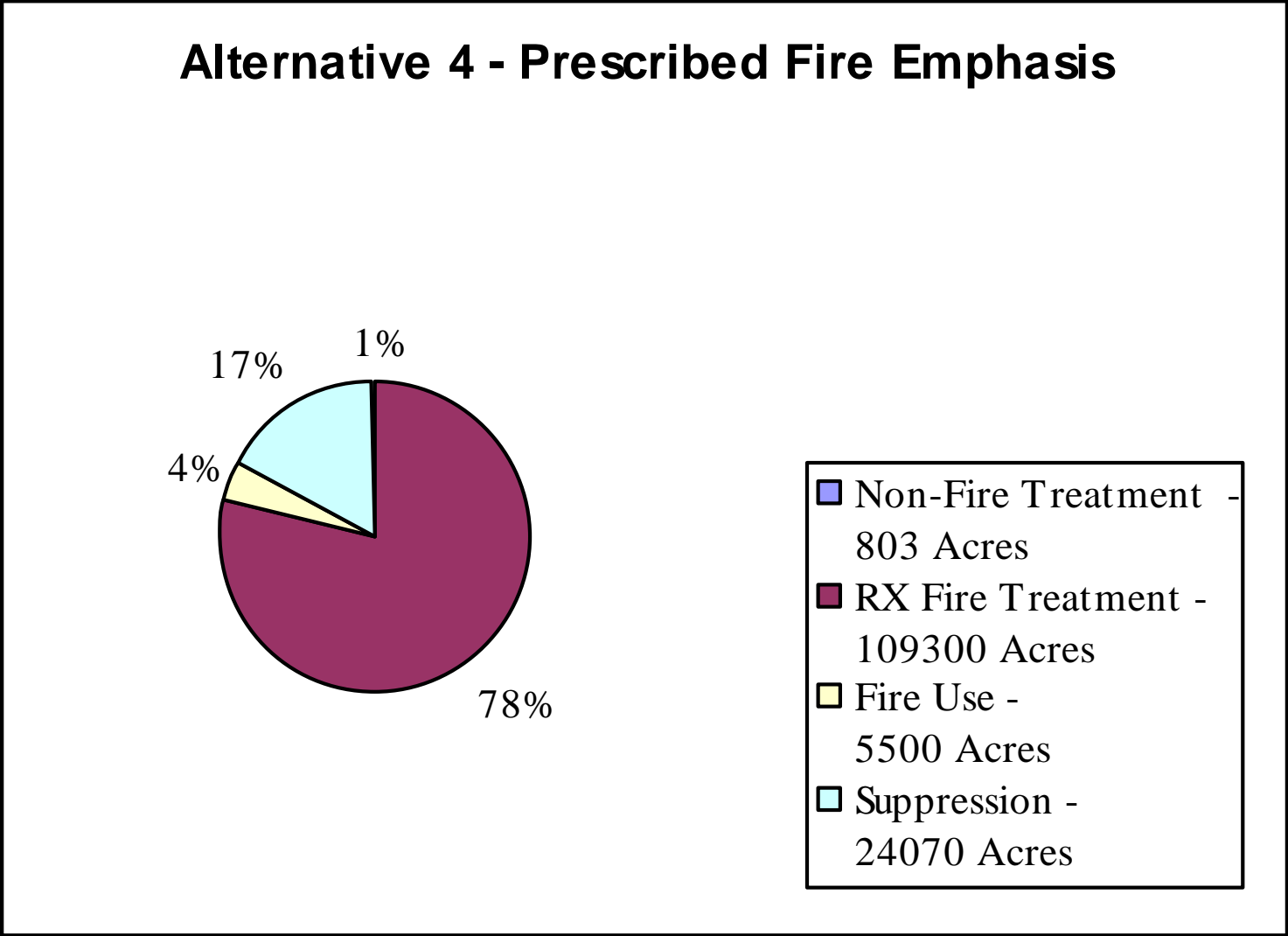
Alternative 3 – Non-Fire Treatment Emphasis

- ✓The mechanical/manual thinning program will increase and prescribed fire & wildland fire use program will decrease
- ✓Use of the eight new fire management units
- ✓Acres burned under suppression strategy would increase 30%
- ✓Prescribed fire would result in annual average of 2,300 acres
- ✓Annual acres managed as Wildland Fire Use is expected to decrease as staff is committed to non-fire projects.
- ✓Manual/Mechanical fuel reduction treatments would increase in the WUI at an annual average of 360 acres



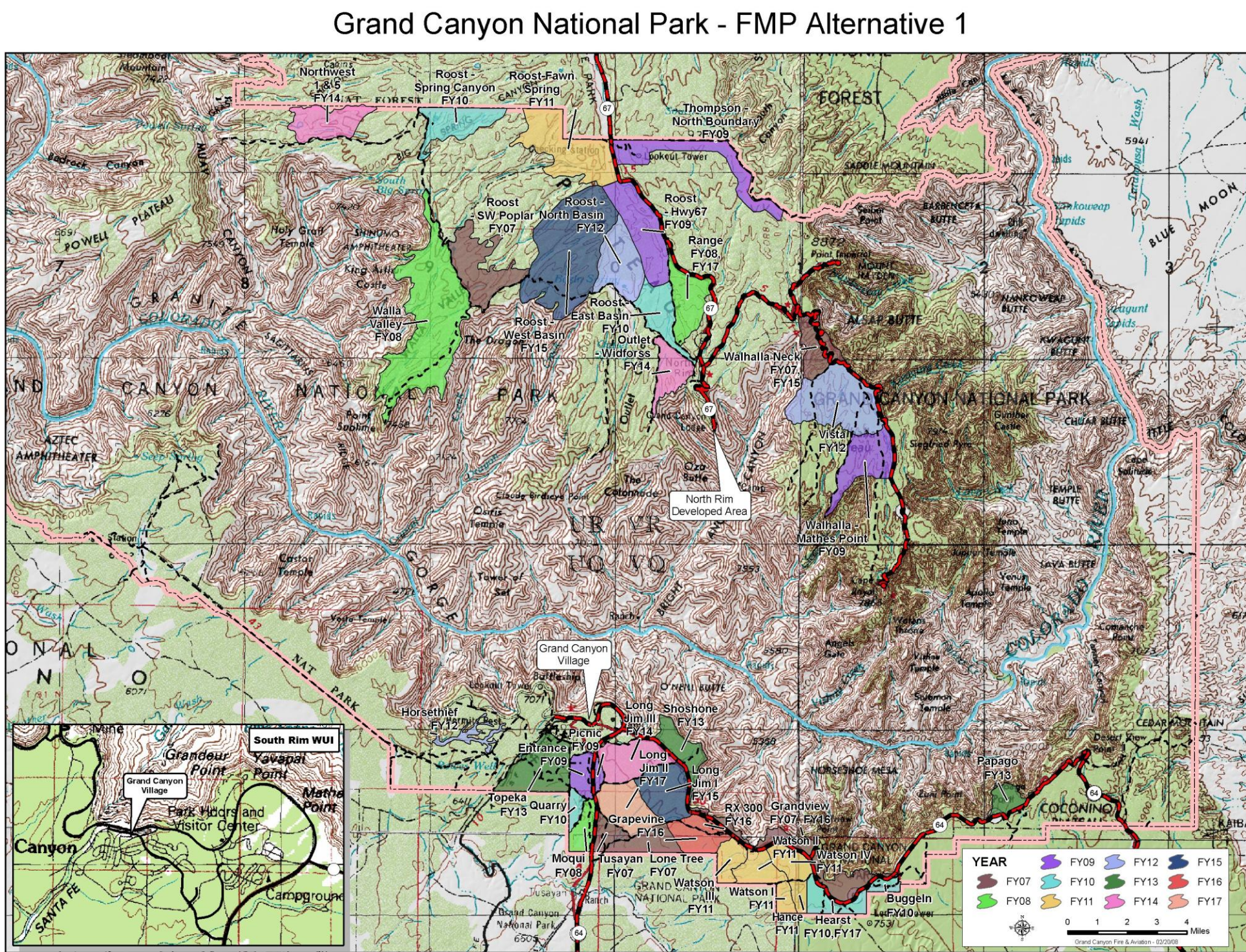
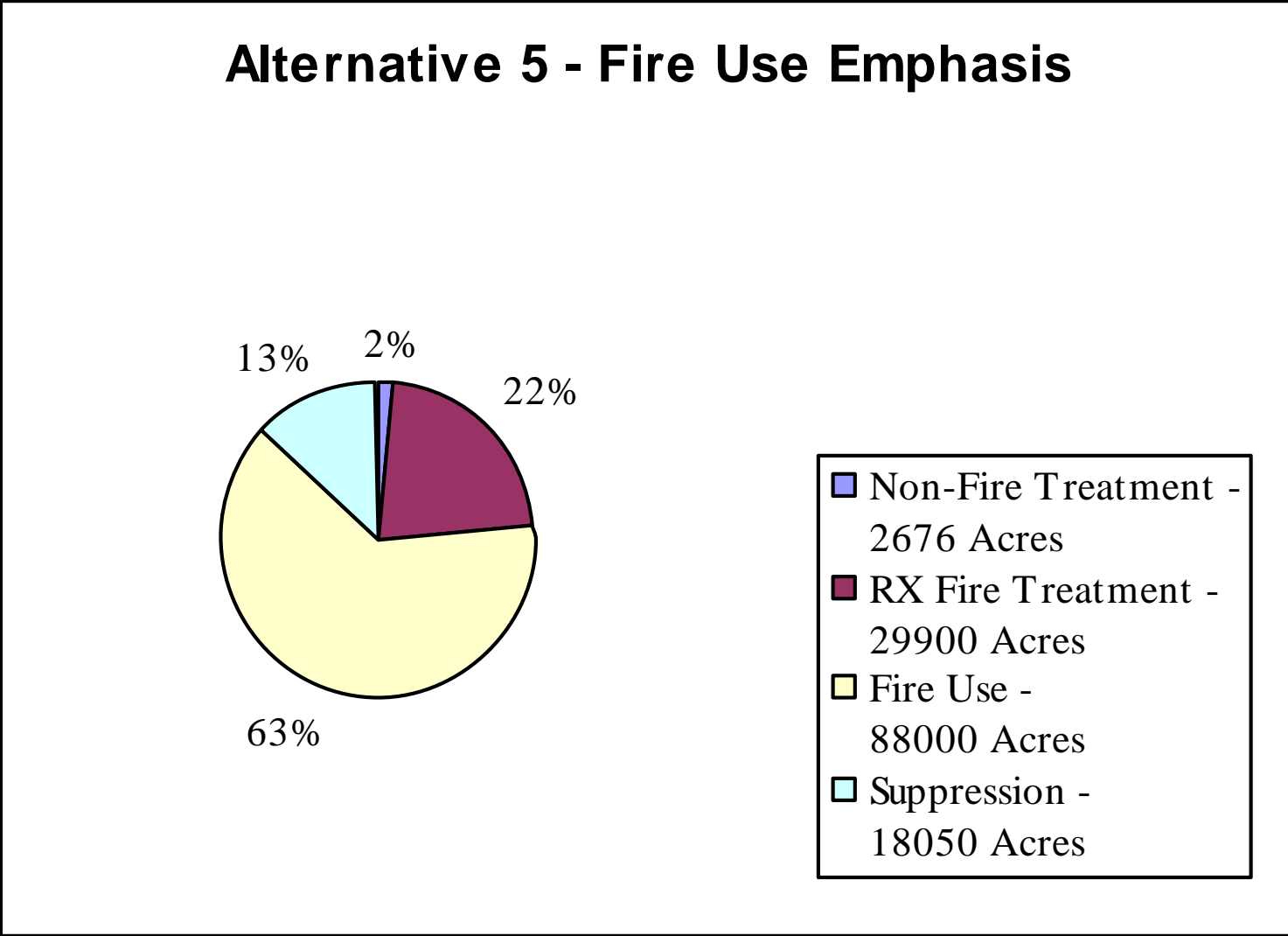
Alternative 4 – Prescribed Fire Emphasis

- ✓Prescribed fire would be solely responsible to achieving desired vegetative conditions.
- ✓Use of the eight new fire management units
- ✓Acres burned under suppression strategy would increase 20%
- ✓Prescribed fire would result in annual average of 9,930 acres
- ✓Annual acres managed as Wildland Fire Use is expected to decrease significantly due to lack of suitable areas that already meet desired conditions
- ✓Manual/Mechanical fuel reduction treatments would occur in the WUI at an annual average of 75 acres

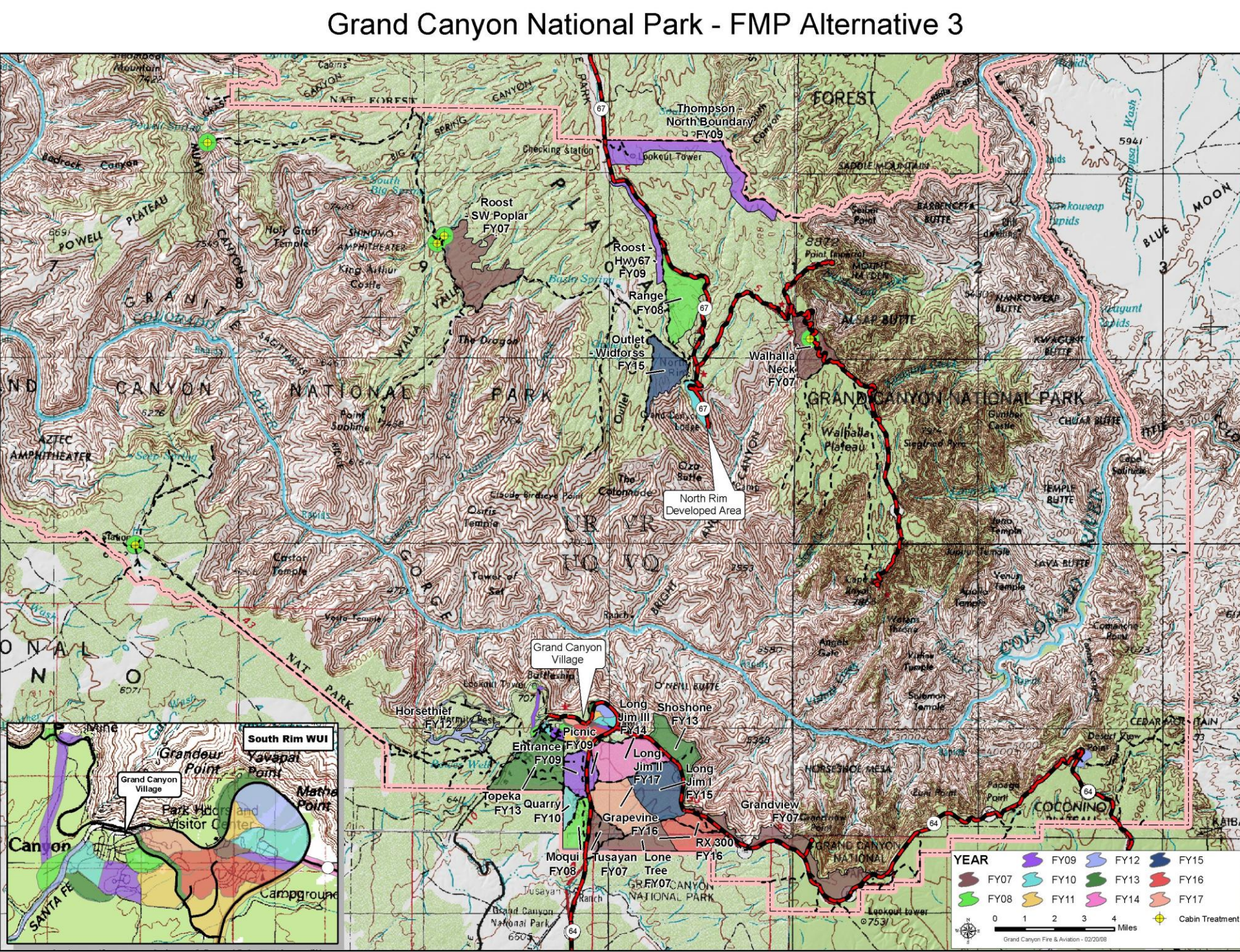


Alternative 5 – Wildland Fire Use Emphasis

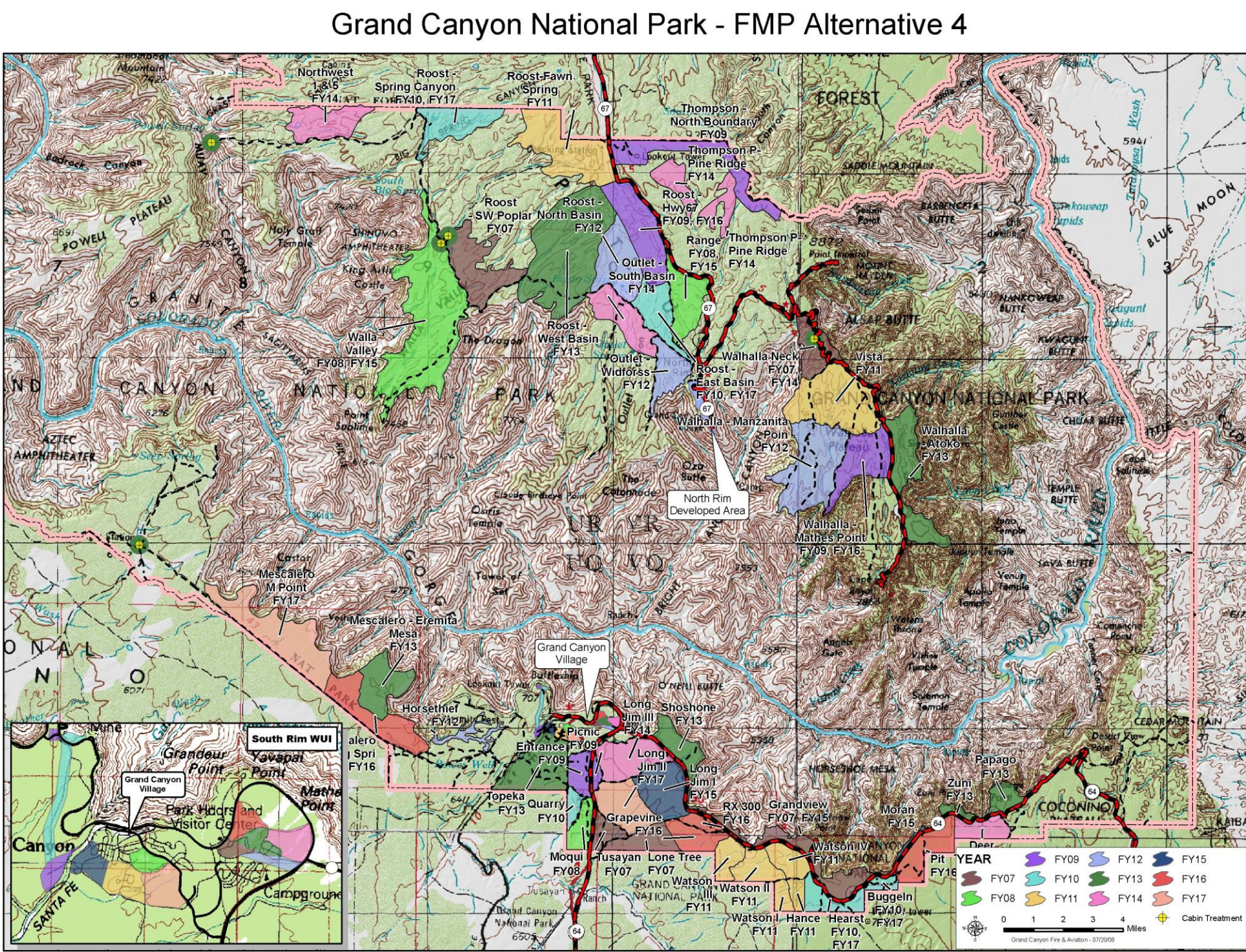
- ✓Wildland fire use would be emphasized to maintain and restore desired vegetative conditions
- ✓Use of the eight new fire management units
- ✓Acres burned under suppression strategy would decrease 10%
- ✓Prescribed fire would result in annual average of 2,720 acres
- ✓Annual acres managed as Wildland Fire Use is expected to increase to an annual average of 8,000 acres
- ✓Manual/Mechanical fuel reduction treatments would occur in the WUI at an annual average of 245 acres.



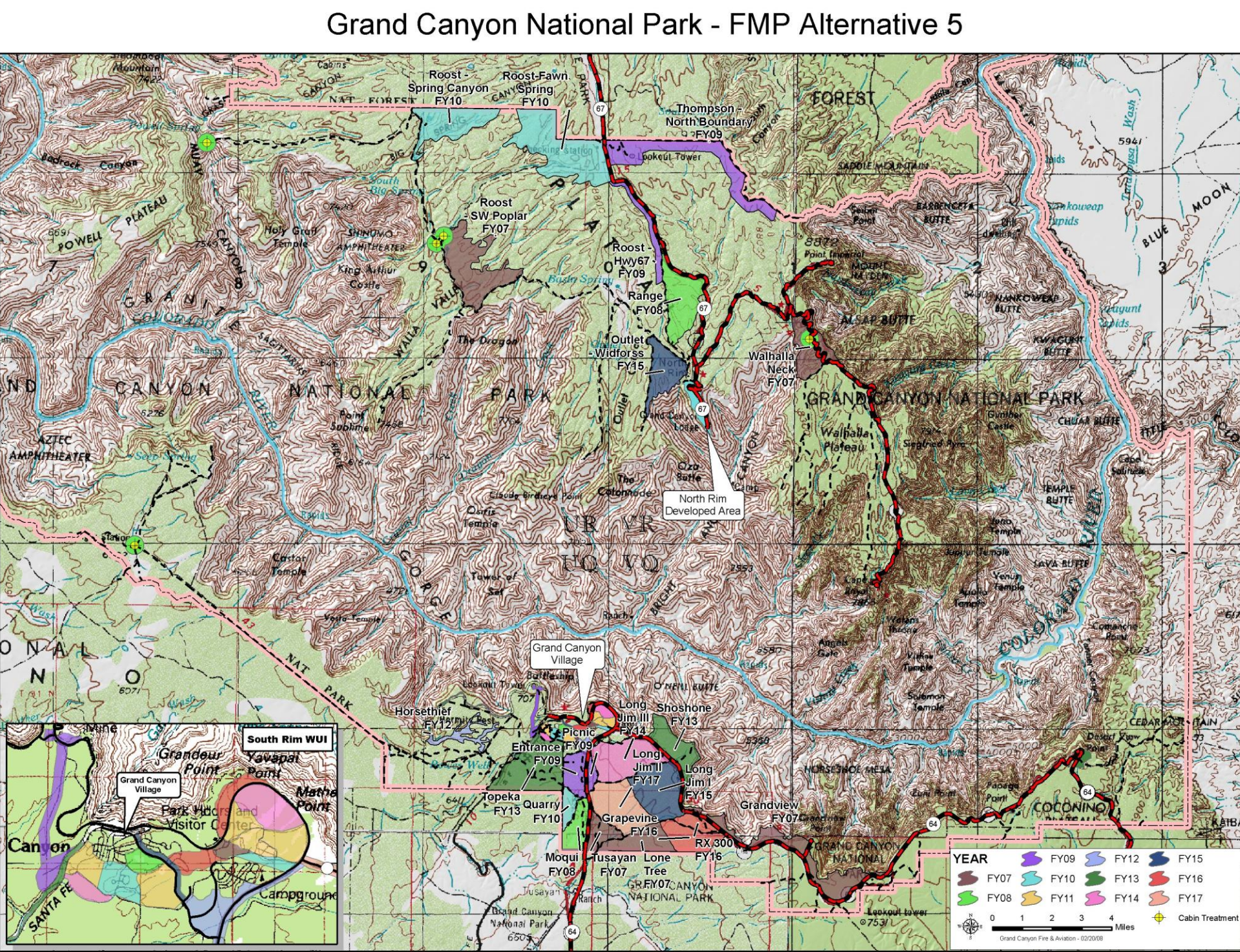
Map of proposed prescribed fire and manual thinning projects



Map of proposed prescribed fire and manual/mechanical thinning projects



Map of proposed prescribed fire and manual/mechanical thinning projects



Map of proposed prescribed fire and manual/mechanical thinning projects

