

**TECHNICAL AMENDMENT to the
PROGRAMMATIC AGREEMENT
AMONG KALAUPAPA NATIONAL HISTORICAL PARK,
NATIONAL PARK SERVICE,
THE ADVISORY COUNCIL ON HISTORIC PRESERVATION,
AND THE Hawai'i STATE HISTORIC PRESERVATION OFFICER
FOR IMPLEMENTATION OF THE
GENERAL MANAGEMENT PLAN**

WHEREAS, on June 10, 2021, Kalaupapa National Historical Park, National Park Service (the Park), the Advisory Council on Historic Preservation (ACHP), and the Hawai'i State Historic Preservation Officer (SHPO) executed a Programmatic Agreement (PA) for the implementation of its General Management Plan (GMP); and

WHEREAS, the Agreement required a technical amendment to insert a missing affirmative statement obligating the Park to ensuring that the PA's Stipulations will be carried out; and

NOW, THEREFORE, the Park agrees to amend the Programmatic Agreement as follows:

1. Amend the PREAMBLE Section just above the word "STIPULATIONS" so that the PREAMBLE includes the following language:

"The Park shall ensure the following stipulations will be carried out:"

The Park will attach a copy of this Technical Amendment to the original PA and provide the Technical Amendment to each of the PA's Signatories, Invited Signatories, and Concurring Parties.

SIGNED:

AMY SAKURADA

Digitally signed by AMY
SAKURADA
Date: 2021.06.14 10:10:43 -10'00'

Amy Sakurada, Acting Superintendent
Kalaupapa National Historical Park

Date

**TECHNICAL AMENDMENT to the
PROGRAMMATIC AGREEMENT
AMONG KALAUPAPA NATIONAL HISTORICAL PARK,
NATIONAL PARK SERVICE,
THE ADVISORY COUNCIL ON HISTORIC PRESERVATION,
AND THE Hawai'i STATE HISTORIC PRESERVATION OFFICER
FOR IMPLEMENTATION OF THE
GENERAL MANAGEMENT PLAN**

SIGNED:

Advisory Council on Historic Preservation



Reid Nelson
Acting Executive Director, ACHP

7/30/2021

Date

PROGRAMMATIC AGREEMENT AMONG
KALAUPAPA NATIONAL HISTORICAL PARK, NATIONAL PARK SERVICE
THE ADVISORY COUNCIL ON HISTORIC PRESERVATION,
AND THE HAWAI'I STATE HISTORIC PRESERVATION OFFICER
FOR IMPLEMENTATION OF THE GENERAL MANAGEMENT PLAN

I. STAFFING	4
II. COMMUNITY ENGAGEMENT	5
III. STREAMLINED REVIEW PROCESS	6
IV. UNDERTAKINGS SUBJECT TO STANDARD REVIEW	7
V. PROJECTS PROPOSED BY OTHERS.....	7
VI. INADVERTENT DISCOVERIES	8
VII.REPORTING AND ANNUAL REVIEW.....	10
VIII. EMERGENCY ACTIONS.....	11
IX. DISPUTE RESOLUTION.....	11
X. TERMINATION AND AMENDMENT.....	12
XI. DURATION OF THIS AGREEMENT.....	12
XII. ANTI-DEFICIENCY ACT.....	12
XIII. APPENDICES	14

**PROGRAMMATIC AGREEMENT AMONG
KALAUPAPA NATIONAL HISTORICAL PARK, NATIONAL
PARK SERVICE
THE ADVISORY COUNCIL ON HISTORIC PRESERVATION,
THE HAWAII STATE HISTORIC PRESERVATION OFFICER,
FOR IMPLEMENTATION OF THE GENERAL MANAGEMENT PLAN**

SIGNATORIES:

National Park Service



Erika Stein Espaniola
Superintendent, Kalaupapa National Historical Park

May 5, 2021

Date

Hawai'i State Historic Preservation Officer

Dr. Alan Downer
Deputy State Historic Preservation Officer

Date

Advisory Council for Historic Preservation

Reid Nelson
Executive Director, Acting
INVITED SIGNATORY:

Date

**PROGRAMMATIC AGREEMENT AMONG
KALAUPAPA NATIONAL HISTORICAL PARK, NATIONAL
PARK SERVICE
THE ADVISORY COUNCIL ON HISTORIC PRESERVATION,
THE HAWAII STATE HISTORIC PRESERVATION OFFICER,
FOR IMPLEMENTATION OF THE GENERAL MANAGEMENT PLAN**

SIGNATORIES:

National Park Service

A black and white photograph of a signature, "E. Espaniola", written in cursive on a dark background.

Erika Stein Espaniola
Superintendent, Kalaupapa National Historical Park

May 5, 2021

Date

Hawaii'i State Historic Preservation Officer

Alan Downer

Dr. Alan Downer
Deputy State Historic Preservation Officer

May 6, 2021

Date

Advisory Council for Historic Preservation

Reid Nelson
Executive Director, Acting
INVITED SIGNATORY:

Date

**PROGRAMMATIC AGREEMENT AMONG
KALAUPAPA NATIONAL HISTORICAL PARK, NATIONAL
PARK SERVICE
THE ADVISORY COUNCIL ON HISTORIC PRESERVATION,
THE HAWAII STATE HISTORIC PRESERVATION OFFICER,
FOR IMPLEMENTATION OF THE GENERAL MANAGEMENT PLAN**

SIGNATORIES:

National Park Service


Erika Stein Espaniola
Superintendent, Kalaupapa National Historical Park

Date

Hawai'i State Historic Preservation Officer

Dr. Alan Downer
Deputy State Historic Preservation Officer

Date

 _____
Reid Nelson
Executive Director, Acting

6/10/2021
Date

Department of Hawaiian Home Lands



William J. Aila, Jr.
Chairman, Hawaiian Homes Commission

5.18.21

Date

CONCURRING PARTY(IES):

The Church of Jesus Christ of Latter-day Saints

David Frischknecht
Director of Temporal Affairs for Historic Sites
The Church of Jesus Christ of Latter-day Saints

Date

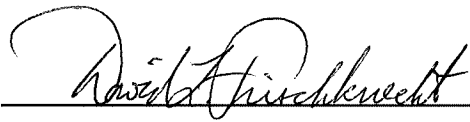
Department of Hawaiian Home Lands

William J. Aila, Jr.
Chairman, Hawaiian Homes Commission

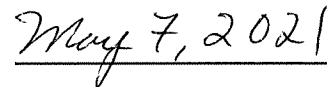
Date

CONCURRING PARTY(IES):

The Church of Jesus Christ of Latter-day Saints



David Frischknecht
Director of Temporal Affairs for Historic Sites
The Church of Jesus Christ of Latter-day Saints



Date

PROGRAMMATIC AGREEMENT AMONG
KALAUPAPA NATIONAL HISTORICAL PARK, NATIONAL PARK SERVICE
THE ADVISORY COUNCIL ON HISTORIC PRESERVATION,
AND THE HAWAI'I STATE HISTORIC PRESERVATION OFFICER
FOR IMPLEMENTATION OF THE GENERAL MANAGEMENT PLAN

WHEREAS, Kalaupapa National Historical Park (hereinafter referred to as "the Park") a unit of the National Park Service (NPS), located in Kalawao County in Hawai'i, operates, manages, maintains, preserves, and interprets the historic properties of the Park to leave them unimpaired for the enjoyment of future generations; and

WHEREAS, the Park was established on December 22, 1980 (P.L. 96-565) and is administered by the NPS through cooperative agreements and a lease with the State of Hawai'i agencies and others [Department of Health (DOH); Department of Hawaiian Home Lands (DHHL); Department of Land and Natural Resources (DLNR); Hawai'i Department of Transportation, Airports (DOT); Roman Catholic Church in the State of Hawai'i; The Hawai'i Conference Foundation; and RW Meyer Ltd.]; and

WHEREAS, Congress established the Park per (P.L. 96-565) (1) to preserve and interpret the Kalaupapa settlement for the education and inspiration of present and future generations; (2) to provide a well-maintained community in which the Kalaupapa leprosy patients are guaranteed that they may remain at Kalaupapa as long as they wish; to protect the current lifestyle of these patients and their individual privacy; to research, preserve, and maintain the present character of the community; to research, preserve, and maintain important historic structures, traditional Hawaiian sites, cultural values, and natural features; and to provide for limited visitation by the general public; and (3) to provide that the preservation and interpretation of the settlement be managed and performed by patients and Native Hawaiians to the extent practical, and that training opportunities be provided to such persons in management and interpretation of the settlement's cultural, historical, educational, and scenic resources; and

WHEREAS, the Superintendent of the Park is the responsible agency official as defined in 36 CFR 800.2(a) for purposes of Section 106 compliance of the National Historic Preservation Act (NHPA), and for the implementation of this Programmatic Agreement (PA); and

WHEREAS, the National Historic Preservation Act of 1966 (as amended) governs the treatment of historic properties, that NPS recognizes its responsibilities in executing provisions of Sections 110 and 106 of that Act; and that Director's Order 28 outlines NPS regard to the preservation and treatment of archeological, cultural and historic properties within the park; and

WHEREAS, Stipulation II.F. of The Programmatic Agreement Among the National Park Service (U.S. Department of the Interior), the Advisory Council on Historic Preservation, and the National Conference of State Historic Preservation Officers for Compliance with Section 106 of the National Historic Preservation Act of 2008 (Nationwide PA) encourages the development of park-specific programmatic agreements to supplement the provisions of the Nationwide PA (see Appendix A); and

WHEREAS, the operation, management, and administration of the Park involves undertakings that may affect historic properties (as defined in 36 CFR Part 800.16(1)), which are therefore subject to review under applicable sections of the National Historic Preservation Act (NHPA) as amended (54 USC 300101 et seq.), such as 106, 110(f), 111(a), and 112, and the regulations of the Advisory Council on Historic Preservation (36 CFR Part 800); and

WHEREAS, the Kalaupapa Leprosy Settlement was designated as a National Historic Landmark (Ref. No.76002415) on January 7, 1976 and was listed on the National Register of Historic Places (Ref. No. 76002415) on January 7, 1976 and is wholly contained within the Park boundary; and

WHEREAS, the Inventory of Historic Properties is listed in Appendix E and the inventory will be updated as new properties are added; and

WHEREAS, the Park regularly consults with each of the parties to this PA in furtherance of facilitating appropriate and timely information sharing and/or formal 106 consultation regarding projects/programs or partnerships related to the Park's mission and scope of operations, agreement documents, and enabling legislation in furtherance of its management of historic properties and cultural resources; and

WHEREAS, the Park is currently preparing a General Management Plan (GMP) pursuant to NPS Management Policies (2006) and Director's Order #2: Park Planning, 3.2.1 General Management Plan Requirements (2021); and

WHEREAS, the Park is currently preparing an Environmental Assessment (EA) for the General Management Plan pursuant to the National Environmental Policy Act (NEPA); and

WHEREAS, the Park has determined that the implementation of the GMP may affect properties within the Park that are listed or potentially eligible for listing on the National Register of Historic Places (NRHP) and properties to which Native Hawaiians may attach religious and cultural significance; and

WHEREAS, the Park has defined the Area of Potential Effects (APE) for the undertaking in accordance with 36 CFR 800.4(a)(1) as shown in Appendix B. The APE is an area of 8,720 acres of land and 2,060 acres of submerged and offshore lands within a one-quarter mile offshore area located on the north coast of the island of Molokai; and

WHEREAS, the Park has consulted with the Hawai'i State Historic Preservation Officer (SHPO) on the PA pursuant to 36 CFR part 800, the regulations implementing Section 106 of the NHPA (54 USC 306108 et seq.); and

WHEREAS, the NPS has invited the Advisory Council on Historic Preservation (ACHP) to participate in this PA pursuant to 36 CFR Part 800.6(a)(1)(iii) and the ACHP has chosen to participate in this consultation and development of this PA; and

WHEREAS, the Park notified Native Hawaiian Organizations (NHOs) and interested parties via formal written invitation for the purpose of consultation regarding the effects of the undertaking on historic properties, as listed in Appendix C; and

WHEREAS, the Park has consulted with Consulting Parties, as listed in Appendix C, and has invited them to sign this PA as Concurring Parties; and

WHEREAS, the Park has consulted with Hawai'i State Agencies (DOH, DHHL, HDOT, DLNR) with operational roles in Kalaupapa and has invited them to sign this PA as Concurring Parties; and [SHPO is a Signatory not a concurring party]

WHEREAS, The Church of Jesus Christ of the Latter-day Saints has accepted the invitation and will sign this PA as a Concurring Party; and

WHEREAS, the purpose of this PA is to supplement the existing Nationwide PA and to address the potential *adverse effects*, as defined in 36 CFR 800.6, to historic properties in the Park; and

WHEREAS, the Park will be guided by the Cultural Resources Baseline Documents listed in Appendix D; and

WHEREAS, the Park has a staff of specialists who meet the Secretary of the Interior's Historic Preservation Professional Qualifications Standards (SOI *Professional Qualification Standards*) appropriate to the historic properties in the Park to carry out the Park's Program, and may call on other NPS qualified staff as needed; and

NOW, THEREFORE, the Park, ACHP, DHHL and SHPO agree that the PA shall be implemented in accordance with the following stipulations and processes in order to consider the effects of the Park's undertakings on historic properties.

STIPULATIONS

I. STAFFING

- A. In accordance with Stipulation I.A.5-7 and I.B.1-2 of the Nationwide PA, the Superintendent has designated a Cultural Resources Management (CRM) Team with expertise and meeting the qualifications to fulfill and implement the requirements of the Nationwide PA (Appendix A).
- B. All identification efforts, surveys, assessments, monitoring, data recoveries, and mitigation planning for historic properties and archaeological resources done pursuant to this Agreement will be carried out by, reviewed by, or under the oversight or supervision of a person or persons meeting the SOI Professional Qualification Standards. The Park will strive to develop a CRM Team that possesses experience doing historic preservation in Hawai'i.
 - 1. Stipulation I.A.2-5 of the Nationwide PA requires that the NPS staff receive the NHPA training needed to carry out their responsibilities.
 - 2. Stipulation I.C. of the Nationwide PA requires periodic training on Section 106. In addition, the Park may provide staff mentoring opportunities, course work, or other on the job training that is specific to preservation practices and procedures in Hawai'i.
 - 3. Stipulation I.C.2. of the Nationwide PA requires the Superintendent to report on Section 106 training received by the Superintendent and park staff as part of the biennial report. In addition, the Park will report biennially on all mentoring opportunities, course work, or other on the job training completed by park staff that is specific to preservation practices and procedures in Hawai'i.
- C. The Cultural Resource Management (CRM) Team shall meet the following requirements:

1. Subject matter experts chosen must be appropriate to the resource types found in the Park. Therefore, the number of individuals who comprise the CRM Team is not static and will be appropriate to include all necessary disciplines. Multi-disciplinary reviews of proposed undertakings are recommended.
 2. CRM Team members may be on the park staff, or in other parks, or from NPS Regional Offices, or NPS Centers., and they could also be non-federal contractors or consultants. In addition, the Park may include place-based community members, NHOs, or others in the public or private sector. Regardless of the composition of the CRM Team, the Park will continue to solicit and receive input from place-based community members, consulting parties, recognized cultural experts, or volunteers when planning and implementing projects.
 3. All CRM Team members must meet the Professional Qualification Standards in the Secretary of the Interior's Standards and Guidelines for Archeology and Historic Preservation. For disciplines not covered by SOI Standards, the CRM Team members shall meet qualifications as defined NPS 28 Appendix E.
- D. NPS will develop training and recruitment efforts for native Hawaiians to further implement Section 107 of the Enabling Legislation (P.L. 96-565) regarding (1) first preference hiring authority to 50% native Hawaiians and (2) training opportunities for appointments to positions at the Park. In addition, training and recruitment efforts will be developed to further Article 2, Number 11 in the NPS - DHHL lease where DHHL has reserved the authority to give native Hawaiians a "second right of refusal" to provide revenue-producing visitor services for areas of the Park covered by the lease.

II. COMMUNITY ENGAGEMENT

A. Establishment of a community engagement program

1. The NPS commits to support the development of a community engagement Program within one year of the execution of the PA. At Kalaupapa there is a wealth of expertise among the lineal descendants of patients, kokua, Native Hawaiians with lineal ties, Native Hawaiians in the islands, Kalaupapa religious organizations and other traditionally associated people (known as place-based community members). Because of this great wealth of knowledge that expands and contributes to our understanding, it is important to create and participate in a regular community engagement Program.
2. The purpose of the community engagement Program is to enhance communication among place-based community members and the NPS. Additionally, the Program provides opportunities for feedback to the NPS.

B. The NPS commits to establishing a bi-annual meeting schedule with Concurring Parties regarding activities identified or related to this PA for the GMP within one year of execution of the PA.

1. One of the bi-annual meetings should be considered to take place in Kalaupapa, as feasible.

C. The NPS commits to establishing a Community and Public Engagement Newsletter within one year of the execution of the PA.

1. The purpose, goals and objectives of the newsletter is to relay information related to the culture, values and histories that are important to current patients, and to update Concurring Parties on park projects and efforts.

D. Partnerships

1. The park will cultivate, establish, enhance, and maintain a wide range of partnerships with varied entities throughout Hawai'i, nationally, and abroad for the long-term stewardship of Kalaupapa.
2. NPS will liaise with DHHL on a regular basis regarding input from DHHL beneficiaries related to the scope of the PA that results from any consultation process that DHHL conducts with its beneficiaries.

III. STREAMLINED REVIEW PROCESS

A. Criteria for Using the Streamlined Review Process

1. In accordance with Stipulation I.A.5 – 7 and I.B.1 – 2 of the Nationwide PA, the Superintendent has designated a CRM Team with expertise and meeting the qualifications to fulfill and implement the requirements of the Nationwide PA.
2. If a property (site, building, structure, district, or object) was not formally listed or determined eligible for the National Register (see Appendix E) the Park will make a determination of eligibility to the NRHP, the Park shall consult with the SHPO in accordance with 36 CFR 800.4(c).
3. The CRM Team will implement the streamlined review process per Stipulation III.B in the Nationwide PA (see Appendix A).
4. The CRM Team will review projects for compliance with the *Secretary of the Interior's Standards for the Treatment of Historic Properties* (36 CFR 68), and treatment recommendations cited in baseline cultural resources publications in Appendix D.
5. Except for Stipulation III.C.12 (Reburial of Human Remains and Other Cultural Items etc. NAGPRA), Kalaupapa NHP will follow the Streamlined Review Process for activities listed in Stipulation III.C of the Nationwide PA. Stipulation III.C.5. is further clarified to apply to the existing footprint or a documented disturbed area.
6. The Park will follow the Standard Review Process in 36 CFR 800.3-800.6 for undertakings that do not meet the streamlined review criteria, such as those projects having an *adverse effect*, or which are not specific project types qualified for streamlined review as mentioned in Stipulation II of this document or in the Nationwide PA, Section III.

7. An Annual Report of all undertakings reviewed using the Streamlined Review process will be prepared by the Park Section 106 Coordinator, and an electronic copy will be transmitted to the SHPO and the consulting parties. The report will include a list of staff members of the CRM Team and their qualifications to conduct reviews.

IV. UNDERTAKINGS SUBJECT TO STANDARD REVIEW

- A. All undertakings not subject to Streamlined Review will follow the standard process as outlined in 36 CFR Part 800. In addition, the Park will:
 1. Assess the effects of the proposed undertaking on historic properties to include direct, indirect, and cumulative effects, by applying the criteria of adverse effects (36 CFR 800.5(a)(1)) and make one of the following determinations:
 - a. *No historic properties affected*: If the park determines that historic properties present in the APE will not be affected by the undertaking, and the SHPO concurs with this effect determination, the Park Section 106 Coordinator shall document this determination of *No historic properties affected* for inclusion in the Annual Report. Following completion of the requirements in this subparagraph, NPS will have no further obligations under this stipulation unless project details change.
 - b. *No adverse effect*: If the Park determines that historic properties present in the APE will not be adversely affected by the undertaking, and the SHPO concurs with this effect determination, the Park Section 106 Coordinator shall document this determination of *No Adverse Effect* for inclusion in the Annual Report. Following completion of the requirements of this subparagraph, NPS will have no further obligations under this stipulation unless project details change.
 - c. *Adverse effect*: If the Park determines that historic properties in the APE will be adversely affected by the undertaking, the Park shall continue on the Project Review process pursuant to 36 CFR 800.3-800.6.
- B. Resolution of Adverse Effects
 1. The Park will engage in consultation to resolve adverse effects per the process outlined in 36 CFR 800.6.

V. PROJECTS PROPOSED BY OTHERS

- A. At such time the NPS becomes aware of projects proposed by others that may be relevant to the Park, the NPS will make information available to Consulting Parties to create awareness so that they may seek additional information from the Park or the initiating party that will help them to individually engage and respond.
- B. There are properties contributing to the Kalaupapa Leprosy Settlement National Historic Landmark (NHL) that are not under NPS management authority. For these properties, the NPS may provide technical assistance and review to avoid potential adverse effects from the undertakings of other agencies and organizations.

VI. INADVERTENT DISCOVERIES

This stipulation addresses A) inadvertent discoveries for historic properties as referenced in the Nationwide PA, Stipulation VI. and further defined in 36 CFR 800.16 (l)(1); and B) inadvertent discoveries as defined by NAGPRA (43 CFR 10) pertaining to the inadvertent discovery of human remains, funerary objects, sacred objects, or objects of cultural patrimony found under or on Federal or tribal lands. (43 CFR 10.4); and C) the intentional archaeological excavation or the planned removal of human remains, funerary objects, sacred objects, or objects of cultural patrimony found under or on Federal or tribal lands pursuant to Section 3 (c) of NAGPRA. (43 CFR 10.3).

- A. Inadvertent discoveries for historic properties that are not NAGPRA related: if historic properties are encountered during an undertaking or through other events such as erosion or animal activity, work in the immediate area will cease until consultation has been completed. The Superintendent in consultation with the Park Section 106 Coordinator and the appropriate members of the CRM Team, will make reasonable efforts to avoid, minimize, or mitigate adverse effects on those historic properties in consultation with the SHPO and the Consulting Parties.
 1. The Park will notify the Superintendent of the Park and Cultural Resources Program Manager immediately by telephone and confirm in writing. As soon as possible, but not later than three working days after receipt of written confirmation, the Superintendent of the Park must notify DHHL, if on their land, SHPO and the Consulting Parties.
 2. The Park shall record as much as has been revealed and consult further with DHHL, if on their land, SHPO and the other Consulting Parties. For any historic properties encountered in situ, GIS data with submeter accuracy will be recorded to document the location of the find.
 3. The DHHL, SHPO and other Consulting Parties that have been notified have 14 calendar days to review and respond to the notification and request for information. Additional parties may be identified through the consultation process.
 4. The Park will consult with the DHHL, if on their land, SHPO and other Consulting Parties to consider ways to avoid, minimize, or mitigate adverse effects to historic properties, and if the discovery contributes to the NHL.
 5. Whenever possible, the NPS preference is to preserve in place. However, treatment plans to address specific inadvertent discoveries may be developed in consultation with DHHL, if on their land, SHPO and other Consulting Parties. The plans will follow the Secretary of Interior's Standards and Guidelines for Archeological Documentation. The plans will describe protection measures for affected features, relevant research questions to be answered, methods for recordation, monitoring during implementation, responsibilities and coordination, and the interpretation and curation of recovered materials. To expedite any needed treatment, the NPS will strive to complete any treatment plans as soon as possible.

- B. The inadvertent discovery of human remains refers to the unanticipated encounter or detection of human remains, funerary objects, sacred objects, or objects of cultural patrimony found under or on Federal or tribal lands pursuant to Section 3 (d) of the Native American Graves and Repatriation Act (NAGPRA) 43 CFR 10.4.
1. For any NAGPRA inadvertent discoveries, the NPS will apply NAGPRA on all state lands within the park boundary and will consult with DHHL, if on their land, SHPO and the Consulting Parties. (See 3(c) and (f) below.) If the State process is triggered, the Hawaii Revised Statute 6E-43 and the Hawaii Administrative Rules 13-300 will be followed.
 2. For all NAGPRA issues the Park will follow the Standard Review process.
 3. If human remains and funerary objects, sacred objects, or objects of cultural patrimony are discovered during project implementation, the guidelines outlined in 43 CFR 10.4, Inadvertent Discoveries, will be followed. The Superintendent of the Park will comply with NAGPRA and the Archaeological Resources Protection Act (ARPA).
 - a. Work on the project will be immediately suspended in the area of the immediate discovery and reasonable effort will be made to protect the finds until their appropriate disposition is determined in consultation. The Superintendent of the Park will ensure that any human remains left in place are not exposed, and remain protected, including, as appropriate, stabilization or covering, while compliance with NAGPRA, ARPA, or other applicable federal, state, and/or local laws and procedures are undertaken.
 - b. As soon as possible, but no later than 3 working days after being notified of the discovery, the Superintendent of the Park must notify by email, phone call or letter, the DHHL, if on their land, SHPO and the Consulting Parties.
 - c. Initiate consultation pursuant to 43 CFR 10.5.
 - d. Identify and notify any known lineal descendants and any Native Hawaiian organizations likely to be culturally affiliated with the cultural items; identify and notify the NHOs that aboriginally occupied the area, and any other NHOs known to have a cultural relationship to the cultural items. Notification must be by telephone with written confirmation, and include information about the kinds of human remains, funerary objects, sacred objects, or objects of cultural patrimony, their condition, and the circumstances of their discovery.
 - e. The DHHL, SHPO and other Consulting Parties that have been notified have 14 days to review and respond to the request for information. Additional parties may be identified through the consultation process.
 - f. Ensure the disposition of human remains, funerary objects, sacred objects, or objects of cultural patrimony is carried out following 36 CFR 10.6, Priority of Custody; lineal descendant first, then the NHO that has the closest cultural affiliation.

4. In consultation with SHPO, DHHL and the Consulting Parties, the NPS will further develop a written Protocol for Inadvertent Discoveries at Kalaupapa National Historical Park within one year of execution of this PA. The Protocol will outline procedures that the Park will take in the event of an inadvertent discovery; the Protocol will be available for all Park staff.
- C. Intentional archaeological excavations: The Park's stance is to preserve human remains, funerary objects, sacred objects, or objects of cultural patrimony in place. Intentional archaeological excavations may occur ONLY IF the requirements and procedures outlined in 43 CFR 10.3 are met.
1. Excavation and removal of objects must follow ARPA regulations (16 U.S.C. 470aa *et seq.*)
 2. If on DHHL lands, DHHL will be the issuing agency for any permits required under NAGPRA with the SHPO serving as advisory for such issuance.
 3. Excavation of objects will occur only after consultation with the SHPO and the consulting parties. In the case of tribal lands, excavation will only occur after consultation with the appropriate NHOs pursuant to 43 CFR 10.5 on consultation. If the State process is triggered, the Hawaii Revised Statute 6E-43 and the Hawaii Administrative Rules 13-300 will be followed.
 4. After consultation, the Park will complete and execute a written plan of action.
 5. Priority of custody will follow 43 CFR 10.6: lineal descendant first, then the NHO that has the closest cultural affiliation.

VII. REPORTING AND ANNUAL REVIEW

- A. The Park shall prepare and submit an Annual Report to SHPO and Consulting Parties no later than one calendar year following execution of this Agreement and every year afterward for so long as this Agreement remains in force. The Annual Report shall summarize activities carried out under the terms of this Agreement for the preceding calendar year and review the implementation of the terms of this Agreement to determine whether amendments are needed.
- B. The Annual Report shall include projects, plans, CRM Team, their qualifications and recent training, updated inventories, initiatives, and identifications of any amendments needed. The Annual Report will also include the streamlined review data and basic data described in the Nationwide PA and undertakings subject to the standard review process including the provisions in II of this PA. The Annual Report submitted to the SHPO will include the archaeological reports completed during the year.
- C. Within 75 calendar days of release of the Annual Report, the Park shall schedule a meeting with SHPO, DHHL, NHOs and Consulting Parties.
- D. The annual report will be provided to SHPO, DHHL, NHOs and Consulting Parties no less than 30 days prior to the scheduled meeting.

- E. Hard copies of the annual report will be provided to the Kalaupapa kupuna (patient-residents) and the Park will schedule a meeting for them. Any comments offered may be considered in Section 106 consultation on those projects.
- F. The Park shall also make the Annual Report available for public inspection.

VIII. EMERGENCY ACTIONS

- A. Immediate rescue and salvage operations conducted to preserve life or property temporarily supersedes the provisions of Section 106 and this PA. Examples include earthquake, tsunami, and/or fire.
- B. In the event the Superintendent of the Park deems an action necessary as an essential and immediate response to a disaster or emergency declared by the President, or the Governor of a State or another immediate threat to life or property:
 - 1. The Superintendent of the Park shall notify the SHPO, DHHL if on their land, and concurring parties that attach religious and cultural significance to historic properties likely to be affected prior to the undertaking within 24 hours of declared emergency or as soon as conditions permit and afford them an opportunity to comment within seven (7) days of notifications per 36 CFR 800.12(b)(2). If the Park determines that circumstances do not permit seven (7) calendar days for comment, the Agency Office/Superintendent of the Park shall notify the SHPO and the Concurring Parties and invite comments within the time available. The Park shall consider any comments received in reaching decisions on how to proceed with the emergency undertaking.
 - 2. These emergency procedures apply only to undertakings that will be implemented within 30 calendar days after the disaster or emergency has been formally declared by the appropriate authority. The Park may request an extension of the period of applicability from the SHPO prior to the expiration of the 30 calendar days.

IX. DISPUTE RESOLUTION

- A. Should any party to this agreement object at any time to any actions proposed, or the manner in which the terms of this PA are implemented, the Park, DHHL and SHPO shall consult with the objecting party(s) to resolve the objection. If the Park determines that such objection(s) cannot be resolved through this consultation, the Park will:
 - 1. Forward all documentation relevant to the dispute to the ACHP and the other parties of the dispute in accordance with 36 CFR 800.2(b)(2). Upon receipt of adequate documentation, the ACHP shall review and advise the Park on the resolution of the objection within 30 calendar days. Any comment provided by the ACHP, and all comments from the parties to the PA, will be considered by the Park in reaching a final decision regarding the dispute.

2. If the ACHP does not provide comments regarding the dispute within 30 calendar days after receipt of adequate documentation, the Park may render a decision regarding the dispute. In reaching its decision, the Park will consider all comments regarding the dispute from the parties to the PA.
3. The Park's responsibility to carry out all other actions subject to the terms of this PA that are not the subject of the dispute remain unchanged. The Park will notify all parties of its decision in writing before implementing that portion of the undertaking subject to dispute under this stipulation. The Park's decision will be final.

X. TERMINATION AND AMENDMENT

- A. If any signatory to this PA determines that its terms will not or cannot be carried out, that party shall immediately consult with the other parties to attempt to develop an amendment.
- B. If an amendment is agreed to in writing by all signatories, the amendment will be effective on the day the amendment is signed by all the signatories and is filed with the ACHP.
- C. If within 90 calendar days no consensus can be reached, any signatory may terminate the PA upon written notification to the other signatories, provided that the signatories and concurring parties consult during the period prior to termination to seek agreement on amendments or other actions that would avoid termination.
- D. In the event of termination, the NPS shall comply with the Nationwide PA, with regard to all remaining actions under this agreement.

XI. DURATION OF THIS AGREEMENT

- A. This agreement will expire 10 years from the date of its execution, with the option to extend the duration in five-year increments up to a total of 20 years. Twelve months prior to such time, the Park will consult with the signatories to reconsider the terms of the agreement and revise or amend the document.
- B. Execution of this Programmatic Agreement by the Park, ACHP, DHHL and the SHPO, and implementation of its terms evidence that the NPS has considered the effects of this undertaking on historic properties and have afforded the ACHP an opportunity to participate.

XII. ANTI-DEFICIENCY ACT

- A. All requirements set forth in the PA requiring expenditure of NPS funds are expressly subject to the availability of appropriations and the requirements of the Anti-Deficiency Act (31 U.S.C. § 1341). No obligation undertaken by NPS under the terms of this PA shall require or be interpreted to require a commitment to expend funds not appropriated for a particular purpose. If the NPS cannot perform any obligation set forth in this PA because of unavailability of funds, that obligation must be renegotiated between the NPS, SHPO and DHHL, if on their land.

Appendix A

**PROGRAMMATIC AGREEMENT AMONG THE
NATIONAL PARK SERVICE
(U.S. DEPARTMENT OF THE INTERIOR),
THE ADVISORY COUNCIL ON HISTORIC PRESERVATION,
AND THE NATIONAL CONFERENCE OF STATE HISTORIC
PRESERVATION OFFICERS FOR COMPLIANCE WITH SECTION 106
OF THE NATIONAL HISTORIC PRESERVATION ACT**

I.	RESPONSIBILITIES, QUALIFICATIONS AND TRAINING	2
II.	CONSULTATION	6
III.	STREAMLINED REVIEW PROCESS	9
IV.	STANDARD REVIEW PROCESS	20
V.	NATIONAL HISTORIC LANDMARKS	21
VI.	INADVERTENT DISCOVERIES	21
VII.	EMERGENCY ACTIONS	22
VIII.	REVIEW AND MONITORING OF PA IMPLEMENTATION	22
IX.	SUBSEQUENT AGREEMENTS	24
X.	DISPUTE RESOLUTION	24
XI.	MONITORING AND TERMINATION	25
XII.	SEVERABILITY	25
XIII.	ANTI-DEFICIENCY ACT STATEMENT	26

This Page Intentionally Blank

**PROGRAMMATIC AGREEMENT AMONG THE
NATIONAL PARK SERVICE
(U.S. DEPARTMENT OF THE INTERIOR),
THE ADVISORY COUNCIL ON HISTORIC PRESERVATION,
AND THE NATIONAL CONFERENCE OF STATE HISTORIC
PRESERVATION OFFICERS FOR COMPLIANCE WITH SECTION 106
OF THE NATIONAL HISTORIC PRESERVATION ACT**

WHEREAS, the National Park Service (NPS) plans for, operates, manages, and administers the National Park System (System) and is responsible for identifying, preserving, maintaining, and interpreting the historic properties of the System unimpaired for the enjoyment of future generations in accordance with the 1916 National Park Service Organic Act, the NPS Management Policies (2006), and applicable NPS Directors Orders; and

WHEREAS, the operation, management, and administration of the System entail undertakings that may affect historic properties (as defined in 36 CFR Part 800), which are therefore subject to review under Sections 106, 110(f) and 111(a) of the National Historic Preservation Act as amended (NHPA) (16 USC 470 *et seq.*) and the regulations of the Advisory Council on Historic Preservation (ACHP) (36 CFR Part 800); and

WHEREAS, the NPS has established management policies, director's orders, standards, and technical information designed for the identification, evaluation, documentation, and treatment of historic properties consistent with the spirit and intent of the NHPA; and

WHEREAS, the NPS has a qualified staff of cultural resource specialists to carry out programs for historic properties; and

WHEREAS, the purpose of this Programmatic Agreement (PA) is to establish a program for compliance with Section 106 of the NHPA and set forth a streamlined process when agreed upon criteria are met and procedures are followed; and

WHEREAS, signature and implementation of this PA does not invalidate park-, Region-, or project-specific memoranda of agreement (MOA) or programmatic agreements negotiated for Section 106 purposes prior to the effective date of this PA; and

WHEREAS, Federally recognized Indian Tribes are recognized by the U.S. government as sovereign nations in treaties and as unique political entities in a government-to-government relationship with the United States; and

WHEREAS, the NPS has conducted a series of "listening" meetings with Indian Tribes, has requested the input of a number of Native Advisors in the process of preparing this PA, and has held consultation meetings with Federally recognized Indian Tribes, Native Hawaiian organizations, and other parties on the content of the PA; and

WHEREAS, 36 CFR 800.2 (c)(2)(i)(A) and (B) provide for consultation with Indian Tribes on the same basis as the State Historic Preservation Officer (SHPO) when an undertaking will occur on or affect historic properties on tribal lands; and

WHEREAS, in accordance with 36 CFR 800.14(b)(2)(iii), a PA shall take effect on tribal lands only when the designated representative of the tribe is a signatory to the agreement; and

WHEREAS, for those parks located partly or wholly within tribal lands, the NPS has invited the applicable Tribal Historic Preservation Officer (THPO) or Indian Tribe to sign this PA as an Invited Signatory; and

WHEREAS, the NPS has consulted with the NCSHPO and the ACHP regarding ways to ensure that NPS operation, management, and administration of the Parks provide for management of the Parks' historic properties in accordance with the intent of NPS policies, director's orders and Sections 106, 110, 111, and 112 of the NHPA.

NOW, THEREFORE, the NPS, the NCSHPO, the ACHP, and the signatory tribes mutually agree that the NPS will carry out its Section 106 responsibilities with respect to operation, management, and administration of the Parks in accordance with the following stipulations.

PURPOSE AND NEED

NPS park operations, management, and administration require a large number of low-impact or repetitive activities on a daily basis that have the potential to affect properties listed in or determined eligible for the National Register of Historic Places and require consultation under Section 106. This PA provides an efficient process for compliance with Section 106 for daily NPS park operations, management, and administration activities. It establishes two processes for Section 106 review: a "streamlined" review process for designated undertakings that meet established criteria and a "standard" review process for all other undertakings. This PA also provides programmatic procedures and guidance for other activities related to the Section 106 compliance process, including identification of resources, consultation, and planning.

The NPS shall ensure the following measures are implemented.

I. RESPONSIBILITIES, QUALIFICATIONS, AND TRAINING

The following sections list the responsibilities and required qualifications for those individuals responsible for implementing this PA.

A. Responsibilities

1. Director, National Park Service

The Director has policy oversight responsibility for the agency's historic preservation program. The Director, through the Deputy Director for Operations, executes this PA for the NPS and provides policy level oversight within the NPS to ensure that stipulations of the PA are met.

2. Associate Director for Cultural Resources

The Associate Director for Cultural Resources (ADCR) provides national leadership for policy implementation through establishing standards and guidance for managing cultural resources within the Parks. The ADCR works with the NPS regions and parks to ensure and support compliance with the stipulations of this PA and provides accountability to the signatories of this PA with regard to its implementation. The ADCR is responsible for working with Regions and Parks to develop and fund training needs related to Section 106 and the implementation of the PA. The ADCR in cooperation with the regions and parks, is responsible for issuing a guidance document for this agreement within 12 months of its execution. At the time of execution of this PA, the ADCR also holds the title of Federal Preservation Officer (FPO).

3. Regional Directors

The Regional Director is the line manager for all Superintendents within his/her region. The Regional Director is responsible for policy oversight, strategic planning, and direction for parks and programs within the region and reports to the Director through the NPS Deputy Director for Operations. Review and support of Park and Superintendent implementation of this PA and training to achieve Section 106 compliance is the responsibility of the Regional Director.

4. Regional Section 106 Coordinators

The Regional Section 106 Coordinators work with parks and other NPS offices to provide support for Section 106 compliance and implementation of this PA. The Regional Section 106 Coordinators provide guidance materials and technical assistance for implementing the PA and assist the parks to meet the training, reporting, and consultation requirements of the PA.

5. Superintendents

Superintendents are the responsible agency officials as defined in 36 CFR 800.2(a) for purposes of Section 106 compliance and the implementation of this PA.

Each Superintendent shall do the following within his/her park:

- a. Designate a Park Section 106 Coordinator and a Cultural Resource Management (CRM) Team meeting the necessary qualifications;
- b. Develop and maintain relationships with Federally recognized Indian Tribal governments and Native Hawaiian organizations (if applicable);
- c. Develop and maintain relationships with SHPOs/THPOs;
- d. Ensure early coordination among the Section 106 Coordinator, the CRM Team, and other park and regional staff, concessioners, park partners, neighboring communities, groups affiliated with park resources, and others in the planning of projects and activities that may affect historic properties;
- e. Ensure that Section 106 consultation with the SHPO/THPO and other consulting parties is initiated early in the planning stages of any given undertaking, when the widest feasible range of alternatives is available for consideration;
- f. Ensure that the Park Section 106 Coordinator, CRM Team Members and the park cultural resources staff receives the NHPA training needed to carry out their responsibilities. Provide opportunities for other involved staff to receive NHPA training as funding and opportunities permit.

6. Park Section 106 Coordinator

The Park Section 106 coordinator provides day-to-day staff support for Section 106 activities and serves as liaison among park personnel, the NPS Regional Office, NPS Centers, and others involved in undertakings. The coordinator makes recommendations to the Superintendent regarding the appropriate course of action under this PA, including whether a project constitutes a Section 106 undertaking.

7. Cultural Resource Management (CRM) Team

The CRM Team shall provide expertise and technical advice to the Superintendent and the Park Section 106 Coordinator for purposes of Section 106 compliance and implementation of this PA.

B. Qualifications

1. Park Section 106 Coordinator

The Superintendent shall designate at least one (1) person to act as the park's Section 106 Coordinator, whose Section 106 responsibilities are specified, as appropriate. The designee may be chosen from the park staff, other NPS parks, NPS archeological and preservation centers, and the NPS Regional Office. The Park Section 106 Coordinator shall have an appropriate combination of professional training and/or experience to effectively carry out the responsibilities of the position.

2. Cultural Resource Management (CRM) Team

The Superintendent shall designate a CRM Team with expertise to fulfill and implement the requirements of this PA, whose Section 106 responsibilities are specified, as appropriate.

- a. Subject matter experts chosen must be appropriate to the resource types found in the park. Therefore, the number of individuals who comprise the CRM Team is not static and will be appropriate to include all necessary disciplines. Multi-disciplinary reviews of proposed undertakings are recommended.
- b. CRM Team members may be on the park staff or in other parks, or from NPS Regional Offices, NPS Centers, Federally recognized Indian Tribes, Native Hawaiian organizations, or elsewhere in the public or private sector.
- c. CRM Team members who are federal employees shall meet the qualifications for the applicable discipline as defined in Appendix E to NPS-28: Cultural Resource Management Guideline. CRM Team members who are representing Federally recognized Indian Tribes may be traditional cultural authorities, elders, and others experienced in the preservation of tribal culture. All other CRM team members, who are not federal employees or representing a Federally recognized Indian Tribe, must meet the Professional Qualification Standards in the Secretary of the Interior's Standards and Guidelines for Archeology and Historic Preservation.

C. Training

Periodic training on Section 106 compliance issues and the provisions of this PA is needed to maintain an understanding of the requirements of each. Such training may be accessed through the NPS, the ACHP, SHPOs/THPOs, Indian Tribes, Native Hawaiian organizations, other Federal or state agencies or private industry. Training may be in a classroom setting, electronic media, meetings, or other formats that allow for the conveyance of information. The NPS Washington Office, in consultation with the NPS parks, regions, and training centers, will work with the ACHP and NCSHPO to establish options for training in accordance with this PA, within 12 months from the time of execution of this PA.

1. All Superintendents and Section 106 coordinators will be notified of the opportunity to receive training on the provisions of this programmatic agreement once it has been made available by the NPS Washington Office. The NPS ADCR will work with the Regional 106 coordinators to accomplish this training throughout the Regions and parks within 12 months of its availability.
2. Superintendents will report on Section 106 training received by Superintendents and park staff as part of the biennial report (Section VIII.B of this agreement).

II. CONSULTATION

A. Consultation with Federally Recognized Indian Tribes and, THPOs, and Native Hawaiian Organizations

Government-to-government consultation with Federally recognized Indian Tribes and consultation with Native Hawaiian organizations shall occur at the Superintendent level and be initiated during planning and prior to undertaking an activity, program or project that may affect historic properties of significance to Federally recognized Indian tribes or Native Hawaiian organizations. Maintaining an on-going consultative relationship with THPOs and/or staff of Federally recognized Indian Tribes and Native Hawaiian organizations is essential.

1. Consultation on Undertakings off Tribal Lands

Superintendents shall identify, compile a list of, and consult with Federally recognized Indian Tribes, THPOs and Native Hawaiians that are known to have aboriginal lands within the park boundaries, assert an interest in historic properties within the park boundaries, or have lands or interest in lands adjacent to the park.

- a. Such consultation will be in accordance with 36 CFR 800.2(c)(2)(ii), NPS Director's Order 75A: Public Engagement and Public Involvement, and with Sections III and IV of this PA.
- b. Each Superintendent, with the assistance of park and Regional Office ethnographers, will be responsible for identifying aboriginal lands within the park boundary, working cooperatively with the appropriate Federally recognized Indian Tribes and Native Hawaiian organizations.
- c. Superintendents, in consultation with the Park Section 106 Coordinator and the CRM Team, shall establish a process and develop consultation agreements, where appropriate, that provide for early coordination between the park and Federally recognized Indian tribes, THPOs, and/or Native Hawaiian organizations in identification and evaluation of historic properties and the planning of projects and activities that may affect historic properties.
- d. Identification and evaluation of historic properties on aboriginal lands must be based upon consultation with the appropriate traditionally associated communities.

2. Consultation on Undertakings on Tribal Lands

For those undertakings that either occur on tribal lands or will otherwise have the potential to affect historic properties on tribal lands, including cumulative impacts from collectively significant actions taking place over a period of time, the Superintendent shall consult with that tribe on the same basis as he or she consults with the SHPO.

- a. Where the Tribe has assumed the SHPO's responsibility for Section 106 pursuant to Section 101(d)(2) of the NHPA, the Superintendent shall consult with the THPO in lieu of the SHPO, except as provided for in Section 101(d)(2)(D)(iii).
- b. Where the Tribe has not assumed the SHPO's responsibility for Section 106, the Superintendent shall consult with the Tribe's designated representatives in addition to and on the same basis as the SHPO. The Tribe shall have the same rights of consultation and concurrence as the SHPO.

3. **Applicability of this PA on Tribal Lands**

When a park is located partly or wholly within the boundaries of tribal lands, and the tribe has not signed this PA as an Invited Signatory, any undertaking that may occur on those tribal lands shall require consultation with the Tribe and/or THPO in accordance with 36 CFR Part 800, and the provisions of this PA are not applicable.

A tribe may sign this PA by written notification to the Director of such intent, signed by the THPO, Indian tribe, or a designated representative of the tribe. Once such a written and signed notification is received by the Director, the provisions of this PA will be applicable to undertakings occurring on those lands where a park is located partly or wholly within the boundaries of that particular tribe's tribal lands.

4. **Development of Agreements to Facilitate Government-to-Government Consultation with Federally recognized Indian Tribes and Consultation with Native Hawaiian Organizations**

Development of consultation protocols, memoranda of agreement and programmatic agreements is encouraged. Such agreements may be negotiated between Superintendents and Federally recognized Indian Tribes, THPOs, or Native Hawaiian organizations and may be independent of or supplement this PA. For example, such agreements may be specific to a project, plan, or park activity, or may set forth specific consultation protocols between the park and a specific tribe or group of Native peoples. Superintendents will provide an informational copy of all agreements to the Regional Section 106 Coordinator and to the ACHP and appropriate SHPO/THPO in accordance with 36 CFR 800.2(c)(2)(ii)(E).

B. Consultation with SHPOs

Consultation with SHPOs on projects reviewed in accordance with the Standard Review Process will occur in accordance with the procedures set forth in Section IV of this PA. Consultation with SHPOs on implementation of this PA will occur biennially in accordance with Section VIII of this PA.

C. Consultation with Local Governments and Applicants for Federal Assistance, Licenses, Permits, and Other Approvals

Where appropriate, the Superintendent shall actively seek the views and comments of local governments and certified local governments. Those seeking Federal assistance, licenses, permits, or other approvals are entitled to participate as a consulting party as defined in 36 CFR 800.2(c)(4) and will be consulted, as applicable.

D. Consultation with the Public

Superintendents will consult with interested members of the public.

E. General Consultation Provisions

1. Section 110 Inventory of Historic Properties

The parks implement a program to identify, evaluate, and, when appropriate, nominate historic properties to the National Register of Historic Places in accordance with Section 110(a)(2)(d) of the NHPA. Research and testing of all types of historic properties for purposes of identification and evaluation must be limited to the minimum necessary to obtain the required inventory and evaluative information. Early coordination on the identification and evaluation of historic properties should be undertaken with Federally recognized Indian Tribes or Native Hawaiian organizations, as appropriate, utilizing tribal knowledge and expertise wherever applicable. Knowledge and data from appropriate sources of expertise should be utilized, including SHPOs, local governments, Indian Tribes, Pacific Islanders, and national and local professional and scientific organizations. Inventory records should be periodically reviewed and updated, as necessary, to ensure data on historic properties, including condition information, is current, and any previous evaluations of significance remain accurate.

2. Information Sharing: Historic Property Inventories

Parks, NPS Regional Offices, NPS Centers, and SHPOs will share information with each other regarding inventories of historic properties and historic contexts developed, as well as other reports and research results related to historic properties in the parks, whenever such studies become available. In addition, parks, NPS Regional Offices, and NPS Centers will make such information available to interested Federally recognized Indian Tribes, THPOs, and Native Hawaiian organizations. Federally recognized Indian Tribes who are signatories to this PA will, likewise, make such information available to NPS parks and Regional Offices, as appropriate. Information will be shared with the understanding that sensitive information will be withheld by the recipient of the information from public disclosure pursuant to Section 304 of NHPA and other applicable laws. Procedures for information sharing and format for information (i.e. electronic, hard copy, etc.) should be agreed upon between the parties.

3. Notification of Park Section 106 Coordinator

The National Park Service will provide contact information on Section 106 coordinators to Indian Tribes, SHPOs/THPOs, and Native Hawaiian organizations for each park through the Regional Office from the Regional 106 Coordinator within six months of this PA and updated biennially.

4. Review and comment on guidance and training documents

The ADCR will consult with the ACHP and NCSHPO in the development of training materials and guidance for this PA.

F. Development of Agreements to Facilitate Consultation

Development of consultation protocols, memoranda of agreement, and programmatic agreements is encouraged. Such agreements may be negotiated between Superintendents and organizations or governments and may be independent of or supplement this PA. For example, such agreements may be specific to a project, plan, or park activity, or may set forth specific consultation protocols between the park and a specific group, state, or local government. Superintendents will provide an informational copy of all agreements to the Regional Section 106 Coordinator and to the ACHP and appropriate SHPO/THPO in accordance with 36 CFR 800.2(c)(2)(ii)(E).

III. STREAMLINED REVIEW PROCESS

Where the Park Section 106 Coordinator determines the following criteria are met for a proposed undertaking, no further consultation is required unless otherwise specifically requested by the SHPO/THPO, Federally recognized Indian Tribe(s) or Native Hawaiian organization(s), or the ACHP.

A. Criteria for Using the Streamlined Review Process

All of the following criteria must be met in order to use the Streamlined Review Process:

1. The proposed undertaking must be an activity eligible for streamlined review, listed in Section III.C of this PA. These undertakings shall be known as "streamlined activities" for purposes of reference and replace the term "nationwide programmatic exclusions" set forth in the 1995 Programmatic Agreement between the NPS, the ACHP, and the NCSHPO; and
2. Identification and evaluation of all types of historic properties within the project area of potential effect (APE) must have been previously undertaken, sufficient to assess effects on those resources (with the exception of V.C (16)). Identification and evaluation of historic properties of religious and cultural significance to Indian tribes and Native Hawaiian organizations must be based upon consultation

with those entities. All properties within the APE must have previously been evaluated for eligibility to the National Register of Historic Places and the SHPO/THPO must have concurred with the eligibility determination. Inventory records should be periodically reviewed and updated, as necessary, to ensure data on historic properties, including condition information, is current, and any previous evaluations of significance remain accurate; and

3. The Section 106 Coordinator, in consultation with appropriate members of the CRM Team must have reviewed the project and certified that the effects of the proposed undertaking on historic properties on or eligible for the National Register will ***not be adverse*** based on criteria in 36 CFR 800.5, including consideration of direct, indirect, and cumulative effects. The Effect Finding must be "No Historic Properties Affected" or "No Adverse Effect".

B. Streamlined Review Process

1. *Evaluate Whether the Proposed Undertaking is Eligible for Streamlined Review:* The Park Section 106 Coordinator, in consultation with appropriate members of the CRM Team, determines whether the proposed undertaking is an activity listed as an undertaking eligible for streamlined review in Section III.C of this PA. If not, compliance for the undertaking must be accomplished through the Standard Review Process, outlined in Section IV of this PA.
2. *Identify the Undertaking's Area of Potential Effect (APE):* The Park Section 106 Coordinator, in consultation with members of the CRM Team with expertise in the appropriate discipline(s), determines the project's APE, taking into account direct, indirect, and cumulative effects.
3. *Identify Historic Properties within APE:* The Park Section 106 Coordinator, in consultation with members of the CRM Team with expertise in the appropriate discipline(s), identifies the location, number, and significance of historic properties within the APE. If properties are located within the APE that have not yet been documented or evaluated for eligibility for the National Register of Historic Places, or if the SHPO/THPO has not yet concurred with the eligibility determination, compliance for the undertaking must be accomplished through the Standard Review Process, outlined in Section IV of this PA.
4. *Evaluate Effect of Undertaking on Historic Properties in APE:* The Park Section 106 Coordinator, in consultation with members of the CRM Team with expertise in the appropriate discipline(s), evaluates the effect of the proposed undertaking and cumulative effects on historic properties, applying the Criteria of Adverse Effect set forth in 36 CFR 800.5(a)(1)
5. *Document Streamlined Review Process:* If, after following steps one through four (1-4) listed above, the Park Section 106 Coordinator determines no historic properties are within the APE, or the proposed undertaking would result in a

determination of "no historic properties affected" or "no adverse effect", no further consultation is required. The Park Section 106 Coordinator shall document the determination as follows:

- a. The Streamlined Review process will be documented using the NPS "Assessment of Actions Having an Effect on Cultural Resources" form, or another appropriate format. Parks are encouraged to use Servicewide automated project planning and tracking systems, such as the NPS Planning, Environment and Public Comment (PEPC) system, to track and document Section 106 compliance activities.
- b. Documentation will include the comments of each member of the CRM Team involved in the review process and the signature of the Superintendent. Electronic signatures are acceptable.
- c. Documentation will be permanently retained by the Park Section 106 Coordinator for review by consulting parties and to facilitate the preparation of the Annual Report.
- d. Annual Report: An annual report of all undertakings reviewed using the Streamlined Review process will be prepared by the Park Section 106 Coordinator, using existing and readily available data sources and reporting systems such as the NPS Planning, Environment and Public Comment (PEPC) system, for transmittal to the SHPO/THPO.

C. Undertakings Eligible for Streamlined Review

1. **Preservation Maintenance and Repair of Historic Properties:** The Streamlined Review Process is intended to be used for:

- Mitigation of wear and deterioration of a historic property to protect its condition without altering its historic character;
- Repairing when its condition warrants with the least degree of intervention including limited replacement in-kind;
- Replacing an entire feature in-kind when the level of deterioration or damage of materials precludes repair; and
- Stabilization to protect damaged materials or features from additional damage.

Use of the Streamlined Review Process is limited to actions for retaining and preserving, protecting and maintaining, and repairing and replacing in-kind, as necessary, materials and features, consistent with the Secretary of the Interior's Standards for the Treatment of Historic Properties (Standards) and the accompanying guidelines.

Emergency stabilization, including limited replacement of irreparably damaged features or materials and temporary measures that prevent further loss of historic

material or that correct unsafe conditions until permanent repairs can be accomplished, may use the Streamlined Review Process. For archeological sites and cultural landscapes, the Streamlined Review Process may also be used for work to moderate, prevent, or arrest erosion.

If the project activities include ground disturbance, archeological monitoring may be appropriate throughout the ground disturbing activities, in accordance with any recommendation of the CRM Team. When monitoring is recommended, members of any appropriate Federally recognized Indian Tribes or Native Hawaiian organizations may be invited to participate in monitoring.

The Streamlined Review Process may be used for routine repairs necessary to continue use of a historic property, but it is not intended to apply to situations where there is a change in use or where a series of individual projects cumulatively results in the complete rehabilitation or restoration of a historic property. If an approved treatment plan exists for a given historic property (such as a historic structure report, cultural landscape report, or preservation maintenance plan), the proposed undertaking needs to be in accordance with that plan. This streamlined activity includes the following undertakings, as well as others that are comparable in scope, scale, and impact:

- a. Removal of non-historic debris from an abandoned building.
- b. Cleaning and stabilizing of historic structures, features, fences, stone walls, plaques, and cannons using treatment methods that do not alter or cause damage to historic materials.
- c. Repainting in the same color as existing, or in similar colors or historic colors based upon an approved historic structure report, cultural landscape report, or a historic paint color analysis.
- d. Removal of non-historic, exotic species according to Integrated Pest Management principles when the species threatens cultural landscapes, archeological sites, or historic or prehistoric structures.
- e. Energy improvements limited to insulation in the attic or basement, and installation of weather stripping and caulking.
- f. In-kind repair and replacement of deteriorated pavement, including, but not limited to, asphalt, concrete, masonry unit pavers, brick, and stone on historic roads, paths, trails, parking areas, pullouts, etc.
- g. Repair or limited in-kind replacement of rotting floorboards, roof material, or siding. Limited in-kind replacement refers to the replacement of only those elements of the feature that are too deteriorated to enable repair, consistent with the Standards.
- h. In-kind replacement of existing gutters, broken or missing glass panes, retaining walls, and fences.

2. Rehabilitation and/or Minor Relocation of Existing Trails, Walks, Paths, and Sidewalks: The Streamlined Review Process may be used for undertakings proposed on existing non-historic trails, walks, paths, and/or sidewalks that are

located within previously disturbed areas and do not exceed the depth of the previous disturbance. The Streamlined Review Process may also be used for undertakings proposed on existing historic trails, walks, paths, and/or sidewalks, provided that the proposed undertaking is conducted in accordance with an approved treatment plan (such as a historic structure report, cultural landscape report, or preservation maintenance plan).

If the project activities include ground disturbance, archeological monitoring may be appropriate throughout the ground disturbing activities, in accordance with any recommendation of the CRM Team. When monitoring is recommended, members of any appropriate Federally recognized Indian Tribes or Native Hawaiian organizations may be invited to participate in monitoring.

This streamlined activity includes the following undertakings, as well as others that are comparable in scope, scale, and impact:

- a. In-kind regrading, graveling, repaving, or other maintenance treatments of all existing trails, walks and paths within existing disturbed alignments.
- b. Minor realignment of trails, walks, and paths where the ground is previously disturbed as determined by a qualified archeologist.
- c. Changing the material or color of existing surfaces using materials that are recommended in an approved treatment plan or in keeping with the cultural landscape.
- d. Construction of water bars following the recommendations of an approved treatment plan or in keeping with the cultural landscape.

3. Repair/Resurfacing/Removal of Existing, Roads, Trails, and Parking Areas:

The Streamlined Review Process may be used as follows:

- a. Existing roads, trails, parking areas, and associated features that have been determined not eligible for the National Register in consultation with the SHPO/THPO, may be repaired or resurfaced in-kind or in similar materials as long as the extent of the project, including staging areas, is contained within the existing surfaced areas. The repair or resurfacing cannot exceed the area of the existing road surface and cannot exceed the depth of existing disturbance.
- b. Existing roads, trails, parking areas, and associated features, that have been determined eligible for the National Register in consultation with the SHPO/THPO, may be repaired or resurfaced in-kind. The project, including staging areas, cannot exceed the area of the existing surface and cannot exceed the depth of existing disturbance.
- c. Existing surfaced areas may be expanded or new surfaces constructed if the extent of new surfacing can be demonstrated to occur on land that has been disturbed by prior excavation or construction and has been shown not to contain buried historic properties. New or expanded surface may not be

an addition to, or continuation of, existing surfaces that are listed in or eligible for the National Register and all project activities, including staging areas, must be located in non-historic areas to be eligible for streamlined review.

- d. Existing surfaced areas may be removed if the surfaced area is not a historic property, it is not located within a historic property and all project activities, including staging areas, will occur on land that has been disturbed by prior excavation or construction and has been shown not to contain buried historic properties.

- 4. Health and Safety Activities: The Streamlined Review Process may be used for health and safety activities that do not require the removal of original historic elements or alteration of the visual character of the property or area.

If the project activities include ground disturbance, archeological monitoring may be appropriate throughout the ground disturbing activities, in accordance with any recommendation of the CRM Team. When monitoring is recommended, members of any appropriate Federally recognized Indian Tribes or Native Hawaiian organizations may be invited to participate in monitoring.

This streamlined activity includes the following undertakings, as well as others that are comparable in scope, scale, and impact:

- a. Sampling/testing historic fabric to determine hazardous content, e.g. lead paint, asbestos, radon.
- b. Limited activities to mitigate health and safety problems that can be handled without removal of historic fabric, surface treatments, or features that are character-defining elements, or features within previously disturbed areas or areas inventoried and found not to contain historic properties.
- c. Testing of soil and removal of soil adjacent to buried tanks, provided the project does not exceed the area of existing disturbance and does not exceed the depth of existing disturbance, as determined by a qualified archeologist.
- d. Removal of oil or septic tanks within previously disturbed areas or areas inventoried and found not to contain historic properties.
- e. Removal of HAZMAT materials within previously disturbed areas or areas inventoried and found not to contain historic properties.
- f. Safety activities related to black powder regulations.
- g. Replacement of septic tanks and systems in previously disturbed areas, or areas inventoried and found not to contain historic properties.
- h. Common pesticide treatments.
- i. Removal of both natural and anthropogenic surface debris following volcanic activity, tropical storms, hurricanes, tornados, or similar major weather events, provided removal methods do not include ground disturbance or otherwise cause damage to historic properties.

5. Routine Grounds Maintenance: The Streamlined Review Process may be used for routine grounds maintenance activities. If an approved treatment plan exists for a given historic property (such as a historic structure report, cultural landscape report, or preservation maintenance plan), the proposed undertaking needs to be in accordance with that plan.

If the project activities include ground disturbance, archeological monitoring may be appropriate throughout the ground disturbing activities, in accordance with any recommendation of the CRM Team. When monitoring is recommended, members of any appropriate Federally recognized Indian Tribes or Native Hawaiian organizations may be invited to participate in monitoring.

This streamlined activity includes the following undertakings, as well as others that are comparable in scope, scale, and impact:

- a. Grass replanting in same locations with approved species.
- b. Woodland and woodlot management (including tree trimming, hazard tree removal, thinning, routine removal of exotic species that are not a significant component of a cultural landscape, stump grinding).
- c. Maintaining existing vegetation on earthworks, trimming trees adjacent to roadways and other historic roads and trails.
- d. Routine maintenance of gardens and vegetation within cultural landscapes with no changes in layout or design.
- e. Routine grass maintenance of cemeteries and tombstones with no tools that will damage the surfaces of stones (i.e. weed whips).
- f. Trimming of major specimen trees needed for tree health or to address critical health/safety conditions.
- g. Routine roadside and trail maintenance and cleanup with no ground disturbance.
- h. Planting of non-invasive plant species in non-historic areas.
- i. Removal of dead and downed vegetation using equipment and methods that do not introduce ground disturbance.
- j. Replacement of dead, downed, overgrown, or hazard trees, shrubs, or other vegetation with specimens of the same species.
- k. Replacement of invasive or exotic landscape plantings with similar non-invasive plants.
- l. Routine lawn mowing, leaf removal, watering, and fertilizing.
- m. Routine orchard maintenance and pruning.

6. Battlefield Preservation and Management: The Streamlined Review Process *may be used only if* the park has approved planning documents (General Management Plan, cultural landscape report, treatment plan) that specify preservation and management protocols for the subject battlefield.

If the project activities include ground disturbance, archeological monitoring may be appropriate throughout the ground disturbing activities, in accordance with any recommendation of the CRM Team. When monitoring is recommended, members of any appropriate Federally recognized Indian Tribes or Native Hawaiian organizations may be invited to participate in monitoring.

Consistent with that plan(s), activities include:

- a. Maintenance and preservation work limited to retaining, protecting, repairing, and replacing in-kind materials and features that contribute to the National Register significance of the battlefield landscape.
- b. Earthworks maintenance to prevent erosion and ensure preservation of existing profile, based on current and accepted practices identified in "Sustainable Military Earthworks Management" found on the NPS Cultural Landscape Currents website.
- c. Removal of hazard trees with no ground disturbance and with use of stump grinding provided the grinding is limited to the diameter of the stump and a depth of no greater than 6 inches.
- d. Repairing eroded or damaged sections of earthworks in-kind following archeological documentation and recordation in appropriate NPS inventory and management databases resulting in complete, accurate, and reliable records for those properties.
- e. Maintaining a healthy and sustainable vegetative cover.

7. **Hazardous Fuel and Fire Management:** The Streamlined Review Process *may be used only if* the park has an approved fire management plan or forest management plan.

If the project activities include ground disturbance, archeological monitoring may be appropriate throughout the ground disturbing activities, in accordance with any recommendation of the CRM Team. When monitoring is recommended, members of any appropriate Federally recognized Indian Tribes or Native Hawaiian organizations may be invited to participate in monitoring.

Following completion of activities under this section, post-burn inspection and monitoring should be conducted by a qualified archeologist to ensure no archeological sites were impacted or previously unknown sites revealed.

Consistent with the approved fire management plan or forest management plan, this streamlined activity includes the following undertakings, as well as others that are comparable in scope, scale, and impact:

- a. Removal of dead and downed vegetation, outside of historic districts, cultural landscapes, and archeological sites, using equipment and methods that do not introduce ground disturbance beyond documented natural or historic disturbance.

- b. Removal of dead and downed vegetation, as well as trees and brush located within historic properties, if the vegetation does not contribute to the significance of the historic property and equipment and methods are used that do not introduce ground disturbance beyond documented natural or historic disturbance.
 - c. Forest management practices, including thinning of tree stands, outside of historic districts, cultural landscapes, and archeological sites, using equipment and methods that do not introduce ground disturbance beyond documented natural or historic disturbance.
 - d. Restoration of existing fire line disturbances, such as hand lines, bulldozer lines, safety areas, helispots, and other operational areas.
 - e. Slope stabilization, to include reseeding with native seeds, replanting with native plants and/or grasses, placement of straw bales, wattles, and felling of dead trees when the root ball is left intact and in situ.
8. Installation of Environmental Monitoring Units: The Streamlined Review Process may be used for the placement of small-scale, temporary or permanent monitoring units, such as weather stations, termite bait stations, water quality, air quality, or wildlife stations, in previously disturbed areas, as determined by a qualified archeologist, or areas inventoried and found not to contain historic properties. Borings must be limited to pipes less than 2 inches in diameter and surface samples to less than 12 inches in size and minimal in number.
9. Maintenance or Replacement of Non-Historic Utility Lines, Transmission Lines, and Fences: If the project activities include ground disturbance, archeological monitoring may be appropriate throughout the ground disturbing activities, in accordance with any recommendation of the CRM Team. When monitoring is recommended, members of any appropriate Federally recognized Indian Tribes or Native Hawaiian organizations may be invited to participate in monitoring.

This streamlined activity includes the following undertakings, as well as others that are comparable in scope, scale, and impact:

- a. Maintenance or replacement of buried linear infrastructure in previously disturbed areas. The area of previous disturbance must be documented by a qualified archeologist and must coincide with the route of the infrastructure in its entirety.
- b. Replacement of non-historic materials, provided the undertaking will not impact adjacent or nearby historic properties and is not located in a historic property, or visible from an above-ground historic property.
- c. Maintenance or replacement of infrastructure, such as old water distribution systems, that has been determined to be not eligible for the National Register, in consultation with the SHPO/THPO.
- d. Maintenance of above-ground infrastructure.

- e. Replacement of above-ground infrastructure provided the undertaking is not located in a historic property or visible from an above-ground historic property.
 - f. Enhancement of a wireless telecommunications facility, including the updating of mechanical equipment, provided the activities do not involve excavation nor any increase to the size of the existing facility.
10. Erection of Signs, Wayside Exhibits, and Memorial Plaques: If an approved treatment plan exists for a given historic property (such as a historic structure report, cultural landscape report, or preservation maintenance plan), the proposed undertaking needs to be in accordance with that plan. If the project activities include ground disturbance, archeological monitoring may be appropriate throughout the ground disturbing activities, in accordance with any recommendation of the CRM Team. When monitoring is recommended, members of any appropriate Federally recognized Indian Tribes or Native Hawaiian organizations may be invited to participate in monitoring.

This streamlined activity includes the following undertakings, as well as others that are comparable in scope, scale, and impact:

- a. Replacement of existing signage in the same location with similar style, scale and materials.
 - b. New signs that meet NPS standards, e.g. at entrance to the park or related to the park's interpretive mission, provided the sign is not physically attached to a historic building, structure, or object (including trees) and the sign is to be located in previously disturbed areas or areas inventoried and found not to contain historic properties.
 - c. Replacement of interpretive messages on existing signs, wayside exhibits, or memorial plaques.
 - d. Small developments such as paved pads, benches, and other features for universal access to signs, wayside exhibits, and memorial plaques in previously disturbed areas or areas inventoried and found not to contain historic properties.
 - e. Temporary signage for closures, repairs, detours, safety, hazards, etc. in previously disturbed areas or areas inventoried and found not to contain historic properties.
 - f. Memorial plaques placed within established zones that allow for such placement.
11. Culvert Replacement: The Streamlined Review Process may be used when culvert replacement will occur within existing cut and fill profiles, and:
- a. The existing culvert and/or associated road, rail bed, or cultural landscape has been determined not eligible for the National Register, either individually or as a contributing element to a historic district or cultural landscape, in consultation with the SHPO/THPO; or

- b. The existing culvert is less than 50 years old.

12. Reburial of Human Remains and Other Cultural Items Subject to the Native American Graves Protection and Repatriation Act (NAGPRA): The Streamlined Review Process may be used for the reburial of human remains and other cultural items subject to NAGPRA. The Streamlined Review Process may only be used when:

- a. The reburial is in previously disturbed areas and does not introduce ground disturbance beyond documented disturbance; or
- b. The reburial is in previously inventoried areas found to not contain historic properties.

Any reburial in NPS-administered areas must be in conformance with NPS policies on cemeteries and burials including cultural resource policies.

13. Meeting Accessibility Standards in Historic Structures and Cultural Landscapes: The Streamlined Review Process may only be used for the following undertakings intended to meet accessibility standards:

- a. Reconstruction or repair of existing wheel chair ramps and sloped walkways provided the undertaking does not exceed the width or depth of the area of previous disturbance.
- b. Upgrading restroom interiors in historic structures within existing room floor area to achieve accessibility, unless the historic features and/or fabric of the restroom contribute to the historic significance of the structure.

14. Mechanical, Electrical and Plumbing Systems: The Streamlined Review Process may be used as follows for activities related to mechanical, electrical, and plumbing systems. Such systems may include HVAC systems, fire detection and suppression systems, surveillance systems, and other required system upgrades to keep park lands and properties functional and protected.

- a. Park areas, landscapes, buildings, and structures that have been determined not eligible for the National Register in consultation with the SHPO/THPO, may undergo installation of new systems or repair/upgrading of existing systems in accordance with the Streamlined Review Process.
- b. Properties that have been determined eligible for the National Register in consultation with the SHPO/THPO may undergo limited upgrading of mechanical, electrical, and plumbing systems. However, the Streamlined Review Process may not be used for the installation of new systems or complete replacement of these systems. If proposed activities include the removal of original historic elements or alter the visual character or the property's character-defining materials, features, and spaces, then the Streamlined Review Process may not be used.

- c. If the project activities include ground disturbance, archeological monitoring may be appropriate throughout the ground disturbing activities, in accordance with any recommendation of the CRM Team. When monitoring is recommended, members of any appropriate Federally recognized Indian Tribes or Native Hawaiian organizations may be invited to participate in monitoring.
15. Acquisition of Lands for Park Purposes: The Streamlined Review Process may be used for the acquisition of land for park purposes, including additions to existing parks. The second criterion for use of the Streamlined Review Process (identification and evaluation of all types of historic properties within the project APE; see Section III.A.2) does not apply to this activity, provided the acquisition does not include any further treatment or alteration of properties, since access to land for inventory and evaluation prior to NPS acquisition may be limited. Any known or potential historic properties on the land acquired should be protected from demolition by neglect. Pursuant to 36 CFR 800.5(a)(2)(vi), demolition by neglect constitutes an adverse effect. If any undertakings are proposed in conjunction with the acquisition that have the potential to affect historic properties, the Streamlined Review Process may not be used.
16. Leasing of Historic Properties: The Streamlined Review Process may be used provided all treatment of historic properties proposed in relation to the leasing action is consistent with undertakings eligible for Streamlined Review, set forth in Section III.C of this PA. The Streamlined Review Process may not be used where there is a change of use or where a series of individual projects cumulatively results in the complete rehabilitation or restoration of a historic property.

D. Adding to List of Undertakings Eligible for Streamlined Review

Any proposed additions or revisions to the list of undertakings eligible for streamlined review must be developed through a region-, state- or park-specific Programmatic Agreement and pursuant to 36 CFR 800.14(b). The Regional Director or Superintendent, as appropriate, will develop such agreements with SHPOs/THPOs, in consultation with Federally recognized Indian Tribes and the ACHP or others, as appropriate. If such an agreement is developed by the Superintendent, s/he will notify the Regional Director. Regional Directors will report the development of supplemental, region-, state-, or park-specific programmatic agreements to the Director on an annual basis. The NPS FPO will maintain records on supplemental agreements and provide annual notification of any such agreements to all signatories to this agreement.

IV. STANDARD REVIEW PROCESS

All undertakings that do not qualify for streamlined review as described in Section III above, will be reviewed in accordance with 36 CFR Part 800. Superintendents are responsible for compliance with these regulations. Compliance may also be accomplished through park- and/or project-specific programmatic agreements. Specific activities required will be undertaken by the

Park Section 106 Coordinator, in consultation with appropriate members of the CRM Team. Parks are encouraged to use Servicewide automated project planning and tracking systems, such as the NPS Planning, Environment and Public Comment (PEPC) system, to track and document Section 106 compliance activities and to make such automated systems accessible to compliance partners, including SHPOs/THPOs, Federally recognized Indian Tribes, Native Hawaiian organizations, and/or the ACHP. If a park executes a MOA or PA with consulting parties to resolve adverse effects, the Superintendent will provide an informational copy of the agreement to the Regional Section 106 Coordinator.

V. NATIONAL HISTORIC LANDMARKS

The NHPA provides heightened protection for designated National Historic Landmarks (NHLs) through Section 110(f) and the NHPA's implementing regulations (36 CFR 800.10). Specifically, the NHPA requires that Federal agencies shall, to the maximum extent possible, undertake planning and actions necessary to minimize harm to any NHL that may be directly and adversely affected by an undertaking.

Where the other criteria as listed in Section III.A are met, proposed undertakings that may affect a designated NHL may follow the Streamlined Review Process. Where preliminary planning activities indicate that a proposed undertaking has the potential to have an adverse effect on an NHL, prior to initiating a formal consultation process, the Superintendent will initiate an internal review process in accordance with NPS Management Policies to determine alternatives to avoid or minimize the adverse effects and to assess the possibility of impairment.

VI. INADVERTENT DISCOVERIES

In the event that historic properties are inadvertently encountered during an undertaking for which review has been previously conducted and completed under Section III or Section IV of this PA, or through other events such as erosion or animal activity, the Superintendent will notify the SHPO/THPO, Federally Recognized Indian Tribe(s), and or Native Hawaiian organization, as appropriate, within 48 hours, or as soon as reasonably possible. The Superintendent in consultation with the Section 106 Coordinator and the appropriate members of the CRM Team, will make reasonable efforts to avoid, minimize, or mitigate adverse effects on those historic properties in consultation with the SHPO/THPO, Federally recognized Indian Tribe (s), and/or Native Hawaiian organization (s), as appropriate. If human remains or other cultural material that may fall under the provisions of NAGPRA are present, the Superintendent will comply with NAGPRA and ARPA. The Superintendent will ensure that any human remains are left in situ, are not exposed, and remain protected while compliance with NAGPRA, ARPA, or other applicable federal, state, and/or local laws and procedures is undertaken.

VII. EMERGENCY ACTIONS

Emergencies are those actions deemed necessary by the Superintendent as an essential and immediate response to a disaster or emergency declared by the President, a tribal government, or the Governor of a State, or another immediate threat to life or property. Emergency actions are only those actions required to resolve the emergency at that time and they are limited to undertakings that will be started within thirty (30) days after the emergency has been declared. Such emergency actions will be consistent with the NPS Environmental Safeguards Plan for All-Hazards Emergencies and any other approved servicewide emergency response plans. The Superintendent will notify the SHPO/THPO within 24 hours of the declared emergency or as soon as conditions permit.

VIII. REVIEW AND MONITORING OF PA IMPLEMENTATION

The purpose of the PA review and monitoring process is to ensure NPS protection of historic properties in its stewardship. This is accomplished through the review of undertakings that were completed during the reporting period, review of programmed undertakings, review of implementation of the PA, and review of completion of training requirements.

A. Superintendents Biennial Review and Monitoring Meeting

In order to foster cooperative relations, each Superintendent will, at a minimum, invite consulting parties to a review meeting every two years (biennial), with the first meeting initiated within six months of the signing of this PA by all parties. If all parties agree that such a meeting is not necessary at that time, the meeting may be waived. However, Superintendents shall remain responsible for initiating biennial meetings in subsequent years. More frequent meetings may be appropriate based on specific park circumstances and therefore an alternative meeting schedule may be established, if mutually agreed upon by the parties.

1. Meetings may be conducted in any mutually agreeable location and/or format, including in- person, video conferencing or teleconferencing.
2. The primary invitees to each park's biennial review and monitoring meeting will include the applicable SHPO/THPO, Federally recognized Indian Tribes, and Native Hawaiian organizations with an interest in that park's properties. Superintendents may also consider inviting other interested parties, including Pacific Islanders, concessioners, lessees, friends groups, historic societies, or gateway communities, as appropriate.
3. Superintendents may instead choose to meet individually with some parties, particularly those that have strong interest in specific historic properties.
4. Attendance and meeting minutes will be recorded and distributed to all invited parties after the conclusion of the meeting.

5. Specific discussion items may include the following:
- a. Any documentation pursuant to this PA.
 - b. Any inventories of historic properties developed in the previous two years, or opportunities for future inventory and research, as well as other reports and research results related to historic properties.
 - c. Programmed undertakings that are scheduled, or are likely to be scheduled, for the next two fiscal years.
 - d. Provisions of this PA as well as any project- or program-specific Memoranda of Agreement or Programmatic Agreements.
 - e. Training received by park staff during the reporting period and opportunities for cooperative training arrangements.
 - f. Names of and contact information for the Park Section 106 Coordinator and the CRM Team Members.

B. Superintendents Reporting to NPS Regional Directors

In order to inform park program review and potential ACHP evaluation of PA implementation, Superintendents will report biennially to Regional Directors on implementation of the PA. The Biennial Report shall include the streamlined review data prescribed in Section III B of this PA, training completed and basic data demonstrating compliance with the provisions of this PA as outlined in the guidance document for this agreement (Section I.A.2). ACHP, SHPOs, or THPOs may request hard copies of biennial reports.

C. Park Section 106 Program Review by NPS Regional Directors, SHPOs, THPOs, and the ACHP

1. The Regional Director may, at his/her discretion, initiate a review of a park's implementation of this PA. The ACHP, either at its own discretion, or upon request of a Federally recognized Indian Tribe, SHPO/THPO, or Native Hawaiian organization, may at any time raise with the appropriate Regional Director any programmatic or project matters where they wish the Regional Director to review a Park Superintendent's Section 106 decisions. The Regional Director will consult with the ACHP, and the Regional Director shall provide a written response to the ACHP, and where applicable, the SHPO or THPO, that documents the outcome of the consultation and the resolution. The Regional Director has the option to suspend a park's use of this PA, and subsequently reinstate it as appropriate.
2. Documentation of NPS Section 106 reviews not already provided to SHPOs, THPOs, and the ACHP will be available for review by the ACHP and the appropriate SHPO/THPO upon request. Individual SHPOs/THPOs who wish to review this documentation are responsible for specifying scheduling, frequency, and types of undertakings of concern to them.

D. NPS Regional Directors Reporting to the Director of the NPS

Regional Directors will report biennially to the Director on implementation of this PA within his/her region. Each Regional Biennial Report will be submitted within six (6) months following receipt of Park Biennial Reports by the Regional Director as required in Section VIII.B of this PA. A hardcopy of the biennial reports will be sent to the ACHP and upon request from a SHPO or THPO.

IX. SUBSEQUENT AGREEMENTS

A. Upon execution of this PA, Superintendents are encouraged to evaluate their park's programs and discuss with SHPOs/THPOs, Federally recognized Indian Tribes, Native Hawaiian organizations, and/or the ACHP ways to develop supplemental programmatic agreements for park undertakings that would otherwise require numerous individual requests for comments.

B. Development of programmatic agreements specific to a project, plan, or park may be negotiated between Superintendents and SHPOs/THPOs, Federally recognized Indian Tribes, Native Hawaiian organizations, the ACHP, and/or other consulting parties where appropriate, pursuant to 36 CFR 800.14(b), and may be independent of or supplement this PA. Superintendents will provide an informational copy of all agreements to the Regional Section 106 Coordinator.

C. Memoranda of agreement developed to resolve adverse effects for specific projects shall be negotiated between Superintendents and SHPOs/THPOs, Federally recognized Indian Tribes, Native Hawaiian organizations, and/or the ACHP, pursuant to 36 CFR 800.6(c), and shall be independent of this PA. Superintendents will provide an informational copy of all agreements to the Regional Section 106 Coordinator.

X. DISPUTE RESOLUTION

A. Should disputes arise, the Superintendent, SHPO/THPO, and/or the ACHP will consult with the objecting parties to resolve the objection. All work that is the subject of the dispute will stop until the dispute is resolved in accordance with the procedures in this section. If the dispute cannot be resolved, all documentation relevant to the dispute will be forwarded to the parties named above. If the SHPO/THPO objects to a Park Superintendent's decision, the information will be forwarded to the Regional Director. If the National Park Service objects to the SHPO/THPO's opinion, the information will be forwarded to the ACHP. If the Regional Director cannot resolve a SHPO/THPO objection, the Regional Director will forward to the ACHP relevant documentation not previously furnished to the ACHP and notify the Director of the dispute. Within thirty (30) days after receipt of all pertinent documentation, the ACHP will either:

1. Provide the Regional Director with a recommendation, with an information copy provided to the Director, which the Regional Director will take into account in reaching a final decision regarding the dispute; or
 2. Notify the Regional Director that it will comment to the Director pursuant to the provisions of 36 CFR 800.7 and proceed to comment. Any ACHP comment provided in response to such a request will be taken into account by the NPS with reference to the subject of the dispute.
- B. In the event the ACHP does not respond within thirty (30) days of receipt of all pertinent documentation, the Regional Director may proceed with his or her recommended resolution.
- C. At the request of any individual, agency, or organization, the ACHP may provide the NPS with an advisory opinion regarding the substance of any finding, determination, or decision made in accordance with this PA or regarding the adequacy of the NPS' compliance with Section 106 and this PA.

XI. MONITORING AND TERMINATION

- A. The NPS will convene a meeting of the signatories to this PA within two (2) years of execution of the PA and as needed thereafter, to review implementation of the terms of this PA and determine whether revisions or amendments are needed. Meetings may be conducted in any mutually agreeable location and/or format, including in-person, video conferencing, or teleconferencing. If revisions or amendments are needed, the parties will consult in accordance with 36 CFR 800.14.
- B. This PA may be amended when such an amendment is agreed to in writing by all signatories. When major revisions are proposed to NPS policies that will affect the manner in which the NPS carries out its Section 106 responsibilities, the signatories shall consult to determine whether an amendment to this PA is needed. Any amendments will be effective on the date a copy signed by all of the signatories is filed with the ACHP.
- C. Any party to this PA may terminate it by providing ninety (90) days notice to the other parties, provided that the parties will consult during the period prior to termination to seek agreement on amendments or other actions that would avoid termination. Termination by any Federally recognized Indian Tribe signatory will be limited to termination of this PA on the tribal lands of the subject tribe. In the event of termination, the NPS will comply with 36 CFR Part 800 with regard to individual undertakings otherwise covered by this PA.

XII. SEVERABILITY

- A. If any section, subsection, paragraph, sentence, clause, or phrase in this PA is, for any reason, held to be unconstitutional or invalid or ineffective, such decision shall not affect the validity or effectiveness of the remaining portions of this PA.

B. If any section, subsection, paragraph, sentence, clause, or phrase in this PA is, for any reason, held to be unconstitutional or invalid or ineffective, the signatories shall consult to determine whether an amendment to this PA is needed.

XIII. ANTI-DEFICIENCY ACT STATEMENT

The stipulations of this Agreement are subject to the provisions of the Anti-Deficiency Act (31 U.S.C. 1341 (1998)). If compliance with the Anti-Deficiency Act alters or impairs NPS ability to implement the stipulations of this Agreement, NPS will consult in accordance with the dispute resolution, amendment or termination stipulations as specified in Sections X and XI of this PA.

ADVISORY COUNCIL ON HISTORIC PRESERVATION

BY: 
CHAIRMAN

DATE: 11/14/08

NATIONAL PARK SERVICE

BY: 
DIRECTOR

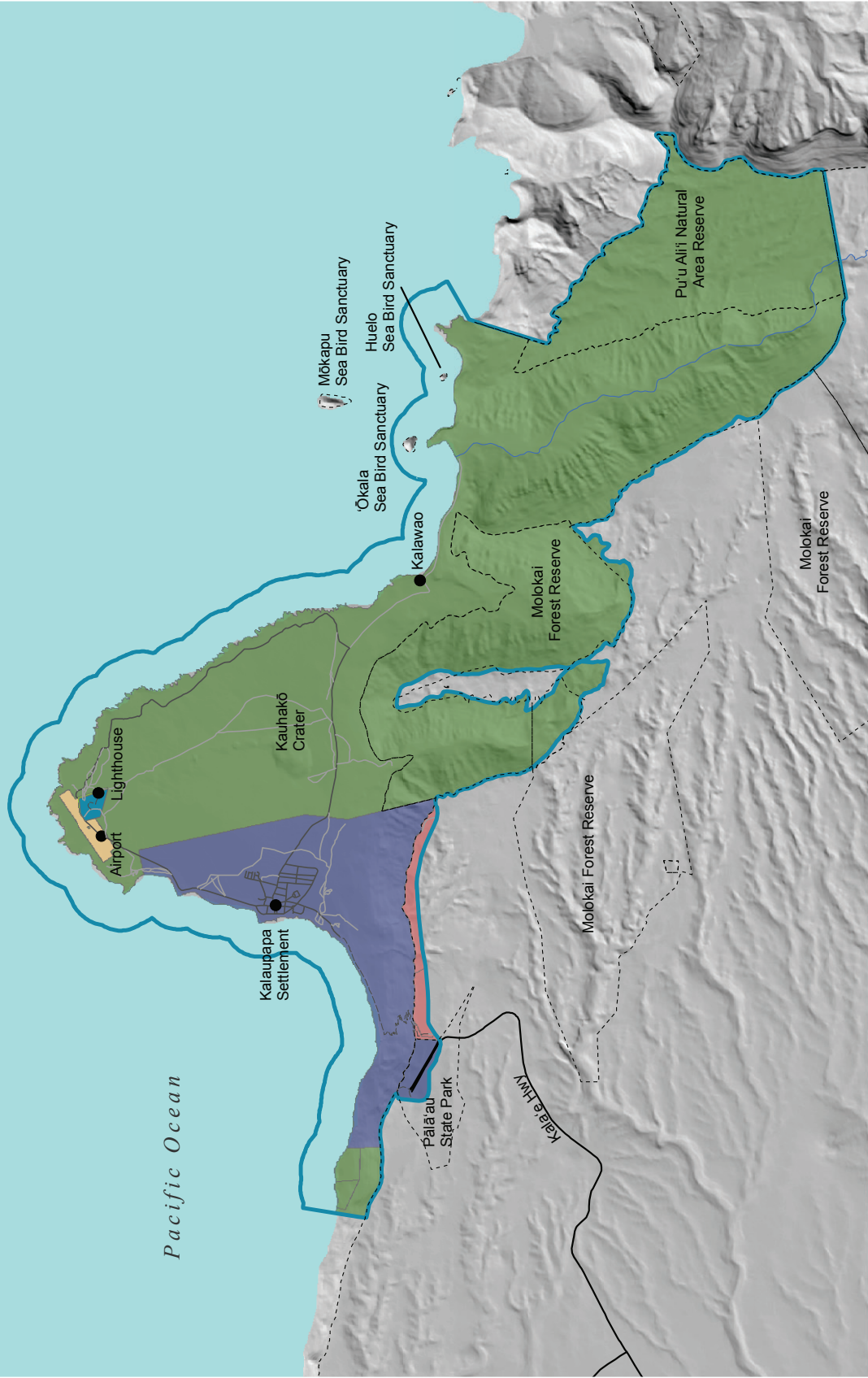
DATE: 11/14/08

NATIONAL CONFERENCE OF STATE HISTORIC PRESERVATION OFFICERS

BY: 
PRESIDENT

DATE: 11-14-2008

Appendix B - Area of Potential Effect



Appendix C - List of Consulting Parties

Organization	Represented by	Title
Aha Kiole-Molokai	Buchanan, Lori	Po`o
`Āina Momona	Ritte, Walter	Executive Director
	Watson, Trisha Kehaulani	Vice-President, Board of Directors
	Wilson, Chris	Program Analyst
Council for Native Hawaiian Advancement	Lewis, Kuhio	Chief Executive Officer
Diocese of Honolulu-Roman Catholic Church in the State of Hawaii	Silva, Most Rev. Larry	Bishop
	Lau, Alicia Damien	Sister
	Wajda, Barbara Jean	Sister
Foundation for Islands of Harmony	Doo, Leigh-wai	
Historic Hawaii Foundation	Faulkner, Kiersten	Executive Director
	Murison, Virginia	Historical Architect
Hui Mālama o Mo`omomi	Poepoe, Mahina	
IDEA Center for the Voices of Humanity	Law, Anwei	International Coordinator
Kalaupapa Federal Advisory Commission	Kaupu, Rev. David	Chair
	Akamu, Pualani	Member; descendant of patients
	Goo, Rosann	Descendant of patient
	Harada, Glenn	Member; Relative of patients
	Hess, Pauline	Member; descendant of patients
	Hoopii, Lopaka	Director, descendant of patients
	Kahilihiwa, Clarence	President; resident patient
	Lapilio, Joseph	Executive Director
	Monson, Valerie	Executive Director
	Vanderbilt, DeGray	Director
Mālama `Āina Foundation	Dill, Jan	President, Vice-Chair
Molokai Community Service Council	Holt, Karen	Executive Director

Organization	Represented by	Title
Molokai Museum and Cultural Center	Keli`ikipi, Noe	Director
Na Pu`uwai	Farrer, Kamahanahokulani	Executive Director
Office of Hawaiian Affairs	Haliniak-Lloyd, Gayla Ann	Community Outreach Coordinator
	Yasuhara, Jerome	Compliance Specialist
Office of Native Hawaiian Relations (ONHR)	Enomoto, Stanton	Senior Program Director
Sisters of St. Francis	Lau, Alicia Damien	Sister
	Wajda, Barbara Jean	Sister
Soto Mission of Hawaii	Komagata, Shugen	Bishop
St. Francis & St. Philomena Catholic Churches, Kalaupapa	Killilea, Father Patrick	Resident Priest
State of Hawaii, Dept. of Hawaiian Home Lands (DHHL)	Aila, William	Chair
	McPherson, Nancy	Planner & DHHL Liaison, Kaua'i, Lāna'i, Papakōlea, Kalaupapa
State of Hawaii, Dept. of Health, Hansens Disease Branch	Chan, Baron	Public Health Administrative Officer
	Seamen, Kenneth	Administrator
State of Hawaii, Dept. of Land and Natural Resources (DLNR) State Historic Preservation Division	Downer, Dr. Alan	Deputy SHPO
	Flauaus, Julia	Architectural Historian
	Gumpac-McGuire, Tanya	Architectural Historian
	Hacker, Stephanie	Archaeologist IV
	Kauhane, Iolani	Maui Archaeologist HP III
State of Hawaii, County of Maui	Lebo, Susan	Archaeology Branch Chief
	Luthy, Tamara	Ethnographer
	McCallister, Andrew	Maui Lead Archaeologist HP IV
State of Hawaii, Maui County Council	Kehler, Annalise	Cultural Resources Planner
State of Hawaii, Maui County Council	Rawlins-Fernandez, Keani	Council Vice-Chair

Organization	Represented by	Title
Sustainable Molokai	Akutagawa, Malia	Member-At-Large
The Church of Jesus Christ of Latter-day Saints	Pykles, Benjamin	Historic Sites Curator
University of Hawaii-Mānoa, Historic Preservation Program, American Studies Dept.	Kam, Ralph	Interim Director
	Ayau, Edward Halealoha	
Individuals (no organization declared)	Collins, Sara	Archaeologist
	Fiske, Ken	

Appendix D

Kalaupapa National Historical Park Cultural Resources Publications Baseline Documents Treatment Recommendations Spreadsheet

NPS Management Policies, 2006, direct the inventory and collection of baseline data on all cultural resources within the park. This Appendix identifies the baseline studies which have been completed to date and cover cultural landscapes, historic buildings and structures, and known archeological sites.

Park	Type of Document	Author	Title	Date
KALA	Archeological Overview & Assessment	Mark McCoy	The lands of Hina: an archaeological overview and assessment of Kalaupapa National Historical Park, Moloka'i Island, Hawaii	2006
KALA	Collection Condition Survey(s)	Voeks and Bender	Collection Condition Survey	2002; 2009
KALA	Collections Management Plan	Bayless, Buchel, Bush, DeRooy, and Sullivan	Kalaupapa National Historical Park Museum Management Plan	2006
KALA	Collections Management Plan	Diana Pardue, Tom Mulhern, Diane Nicholson, Mark Tanaka-Sanders	Collection Preservation Guide	1983
KALA	Cultural Landscape Inventory	Rygh, C. and Tamimi, L.	Kalaupapa and Kalawao Settlements	2011
KALA	Cultural Landscape Inventory	Germano, V. and Gjesfjeld, C.	Molokai Light Station	2011
KALA	Cultural Resources Management Plan	National Park Service	Kalaupapa National Historical Park Cultural Resources Management Plan: An Addendum to the General Management Plan	1984
KALA	Ethnographic Landscape Study	Sonia Juvik	Kalaupapa Landscape: An Ethnographic Study	2007
KALA	Ethnographic Oral and Life Histories	Anwei Skinsnes Law	Oral History Interviews: Kalaupapa National Historical Park Volume 1,2,3	1985-1987

KALA	Ethnographic Overview and Assessment	Charles Langlas, Ka'ohulani McGuire, Sonia Juvik	Kalaupapa 2002-2005: A Summary Report of the Kalaupapa Ethnographic Project and Final Report of the Kalaupapa Ethnographic Project - 2006 - TD01	2007
KALA	Ethnographic Overview and Assessment	Charles Langlas	Final Report of the Kalaupapa Ethnographic Project	2007
KALA	Exhibit Plan and Design	Jane Freeburg	Kalaupapa National Historical Park, Wayside Exhibit Plan	1989
KALA	Fire Protection Survey	Paul Cloyd	Fire protection study for historic buildings, Kalaupapa National Historical Park, Molokai, Hawaii	1993
KALA	Historic American Buildings Survey (HABS) Documentation	Jack Boucher	Historic American Building Survey (Library of Congress, 103 KALA structures at Level III)	1991
KALA	Historic American Buildings Survey (HABS) Documentation	National Park Service	Kalaupapa Social Hall (Paschoal Community Hall)- HABS NO. HI-67, Level 1	1991
KALA	Historic American Engineering Record (HAER) Documentation	Croteau, Todd; Farnham, Kate; Lowe, Jet; O'Connor, Richard	Kalaupapa Water Supply System (Waikolu Valley Water Supply System) HAER NO. HI-42, Level II	1998
KALA	Historic Resource Study	Greene, Linda	Exile in Paradise: the isolation of Hawaii's leprosy victims and development of the Kalaupapa settlement 1865 to the present	1985
KALA	Historic Structure Report	Robert L. Carper, H. Thomas McGrath, Paul C. Cloyd, Linda W. Greene, Catherine H. Blee, Gary F. Somers	Historic Structure Report: St. Philomena Catholic Church (Father Damien's Church), Kalaupapa National Historical Park, Molokai, Hawaii	1985

KALA	Historic Structure Report	William Chapman	Moloka'i Light Station Historic Resources Report	2001
KALA	Historic Structure Report	Dorothy Curtis	Historic Pali Trails of Kalaupapa National Historical Park	1991
KALA	Historic Structure Report	Spencer Architects, Inc	Historic Structures Report: Bishop Home Convent, Chapel, and Cottages; AJA Hall and Outbuilding; Visitor Quarters; Staff Row Dormitory	Sept. 2004
KALA	Housekeeping Plan	Tracy Laqua	KALA Museum Maintenance Plan	Sept. 2009
KALA	Integrated Pest Management Plan	Samantha Richert	KALA IMP Plan Museum Collections	2010
KALA	National Historic Landmark Nomination	Russell A. Apple, Edmund J. Ladd	Kalaupapa Leprosy Settlement NHL District	1976; updated 2020
KALA	National Register Form	J. D. Lindgeen, Thelma L. Yuen	Molokai Light Station (District)	1982
KALA	Scope of Collections Statement	National Park Service	Scope of Collection Statement	2012
KALA	Security Survey	Sergeant M. Falzone	Kalaupapa NHP Security Survey	2008

Appendix E - Inventory of Historic Properties (As of April 2021)

Resource Description	Resource Name	Secondary Name	Resource Type	LCS#	State Site # 50-60-03- ####	Park #	Contributing Resource	Significance Criteria	Source	Management (last updated 2015 OR taken from NHL "secondary name" column)
Administrative Area	Administrative Building	DOH Administration Building, Hale O Kamiana.	Building	56608		270-61	Y	1, 2, 3, 4, 6* A,B,C,D***	Kalaupapa Leprosy Settlement Historic District, NHL update 2020;* National Park Service Cultural Landscape Inventory Revised 2011***	DOH
Administrative Area	Ambulance Garage		Building			314	N		Kalaupapa Leprosy Settlement Historic District, NHL update 2020*	DOH
Administrative Area	Benjamin Residence	NPS House – Kaawaloa.	Building	59953		30	Y	1, 2, 3, 4, 6* A,B,C,D***	Kalaupapa Leprosy Settlement Historic District, NHL update 2020;* National Park Service Cultural Landscape Inventory Revised 2011***	DOH
Administrative Area	Breakwater, Damien Road		Structure	793336		817B	Y	1, 2, 3, 4, 6* A,B,C,D***	Kalaupapa Leprosy Settlement Historic District, NHL update 2020;* National Park Service Cultural Landscape Inventory Revised 2011***	NPS
Administrative Area	Bulkhead wall, Damien Road		Structure	793334		817A	Y	1, 2, 3, 4, 6* A,B,C,D***	Kalaupapa Leprosy Settlement Historic District, NHL update 2020;* National Park Service Cultural Landscape Inventory Revised 2011***	NPS
Administrative Area	Carport and Storage Shed		Building	573930		664	Y	1, 2, 3, 4, 6* A,B,C,D***	Kalaupapa Leprosy Settlement Historic District, NHL update 2020;* National Park Service Cultural Landscape Inventory Revised 2011***	Private
Administrative Area	Carport Foundation		Structure			646	Y	1, 2, 3, 4, 6*	Kalaupapa Leprosy Settlement Historic District, NHL update 2020*	NPS
Administrative Area	Concrete Footing for Flag Pole		Structure				Y	1, 2, 3, 4, 6*	Kalaupapa Leprosy Settlement Historic District, NHL update 2020*	NPS
Administrative Area	Construction Camp Residence 657a		Building	55813		657a	Y	1, 2, 3, 4, 6* A,B,C,D***	Kalaupapa Leprosy Settlement Historic District, NHL update 2020;* National Park Service Cultural Landscape Inventory Revised 2011***	NPS
Administrative Area	Construction Camp Wash House 656		Building	55786		656	Y	1, 2, 3, 4, 6* A,B,C,D***	Kalaupapa Leprosy Settlement Historic District, NHL update 2020;* National Park Service Cultural Landscape Inventory Revised 2011***	NPS
Administrative Area	Container Structures		Building				N		Kalaupapa Leprosy Settlement Historic District, NHL update 2020*	

Resource Description	Resource Name	Secondary Name	Resource Type	LCS#	State Site # 50-60-03- ####	Park #	Contributing Resource	Significance Criteria	Source	Management (last updated 2015 OR taken from NHL "secondary name" column)
Administrative Area	Craft and Storage Building	Craft Shop, Craft Store, Paschoal Craft Building, Beauty Shop, Bakery, Hale Kahu.	Building	22634		300	Y	1, 2, 3, 4, 6* A,B,C,D***	Kalaupapa Leprosy Settlement Historic District, NHL update 2020;* National Park Service Cultural Landscape Inventory Revised 2011***	NPS
Administrative Area	Crematory	DOH paint shop.	Building	59975		262	Y	1, 2, 3, 4, 6* A,B,C,D***	Kalaupapa Leprosy Settlement Historic District, NHL update 2020;* National Park Service Cultural Landscape Inventory Revised 2011***	DOH
Administrative Area	DOH Large Equipment Garage	Big Garage.	Building			315	N		Kalaupapa Leprosy Settlement Historic District, NHL update 2020*	DOH
Administrative Area	DOH Motor Pool Garage	Vehicle Storage Garage, No. 2 Corporation Yard and Garage.	Building	59974		259	Y	1, 2, 3, 4, 6* A,B,C,D***	Kalaupapa Leprosy Settlement Historic District, NHL update 2020;* National Park Service Cultural Landscape Inventory Revised 2011***	DOH
Administrative Area	DOH Motor Pool Gas Station	No. 2 Corporation Yard and Garage.	Building	59973		258a	Y	1, 2, 3, 4, 6* A,B,C,D***	Kalaupapa Leprosy Settlement Historic District, NHL update 2020;* National Park Service Cultural Landscape Inventory Revised 2011***	DOH
Administrative Area	Fuesaina's Bar	Rea's Store and Bar, Elaine's Bar, Elaine's Place.	Building	59956		62	Y	1, 2, 3, 4, 6* A,B,C,D***	Kalaupapa Leprosy Settlement Historic District, NHL update 2020;* National Park Service Cultural Landscape Inventory Revised 2011***	Private
Administrative Area	Fuesaina's Bar Restroom		Building	342014		624	N*/Y***	A,B,C,D***	Kalaupapa Leprosy Settlement Historic District, NHL update 2020* National Park Service Cultural Landscape Inventory Revised 2011***	Private
Administrative Area	Fuesaina's Bar Storage	Rea's Tavern Storage, Elaine's Tavern Storage.	Building	59985		298a	Y	1, 2, 3, 4, 6* A,B,C,D***	Kalaupapa Leprosy Settlement Historic District, NHL update 2020;* National Park Service Cultural Landscape Inventory Revised 2011***	Private
Administrative Area	Fumigation Room	Fumigation Hall, Shoe Fitting House, Mental Ward, Autopsy Room/Morgue.	Building	22633		283BH	Y	1, 2, 3, 4, 6* A,B,C,D***	Kalaupapa Leprosy Settlement Historic District, NHL update 2020;* National Park Service Cultural Landscape Inventory Revised 2011***	NPS
Administrative Area	Garage	NPS Mechanics Garage.	Building	573509		284	Y	1, 2, 3, 4, 6* A,B,C,D***	Kalaupapa Leprosy Settlement Historic District, NHL update 2020;* National Park Service Cultural Landscape Inventory Revised 2011***	NPS

Resource Description	Resource Name	Secondary Name	Resource Type	LCS#	State Site # 50-60-03- ####	Park #	Contributing Resource	Significance Criteria	Source	Management (last updated 2015 OR taken from NHL "secondary name" column)
Administrative Area	Garage		Building	573920		643	Y	1, 2, 3, 4, 6* A,B,C,D***	Kalaupapa Leprosy Settlement Historic District, NHL update 2020;* National Park Service Cultural Landscape Inventory Revised 2011***	Private
Administrative Area	Garage/HAZMAT		Building			316	N		Kalaupapa Leprosy Settlement Historic District, NHL update 2020*	NPS
Administrative Area	Gas Station	DOH Gas Station.	Building	59984		273	Y	1, 2, 3, 4, 6* A,B,C,D***	Kalaupapa Leprosy Settlement Historic District, NHL update 2020;* National Park Service Cultural Landscape Inventory Revised 2011***	DOH
Administrative Area	General Warehouse	Food Warehouse, DOH Warehouse.	Building	59981		271	Y	1, 2, 3, 4, 6* A,B,C,D***	Kalaupapa Leprosy Settlement Historic District, NHL update 2020;* National Park Service Cultural Landscape Inventory Revised 2011***	NPS
Administrative Area	Generator Shed		Building				N		Kalaupapa Leprosy Settlement Historic District, NHL update 2020*	NPS
Administrative Area	Hale Malama – NPS Cultural Resource Management and Curatorial Facility		Building			313	N		Kalaupapa Leprosy Settlement Historic District, NHL update 2020*	NPS
Administrative Area	Ice Plant	Ice and Cold Storage Plant, Butcher Shop and Freezer, Butcher/Electrician Shop, Poi Factory.	Building	59980		267/268	Y	1, 2, 3, 4, 6* A,B,C,D***	Kalaupapa Leprosy Settlement Historic District, NHL update 2020;* National Park Service Cultural Landscape Inventory Revised 2011***	NPS
Administrative Area	Industrial Area / Administration Sidewalks		Structure	573970		864	Y	1, 2, 3, 4, 6* A,B,C,D***	Kalaupapa Leprosy Settlement Historic District, NHL update 2020;* National Park Service Cultural Landscape Inventory Revised 2011***	NPS
Administrative Area	Industrial Area/ Administration Rock Walls		Structure				Y	1, 2, 3, 4, 6*	Kalaupapa Leprosy Settlement Historic District, NHL update 2020*	NPS
Administrative Area	Jail	Jail/Museum, Jail and Police Headquarters.	Building	22635		302	Y	1, 2, 3, 4, 6* A,B,C,D***	Kalaupapa Leprosy Settlement Historic District, NHL update 2020;* National Park Service Cultural Landscape Inventory Revised 2011***	NPS
Administrative Area	Kalaupapa Landing	Wharf, Kalaupapa Pier, Kalaupapa Dock.	Structure	59991		817	Y	1, 2, 3, 4, 6* A,B,C,D***	Kalaupapa Leprosy Settlement Historic District, NHL update 2020;* National Park Service Cultural Landscape Inventory Revised 2011***	
Administrative Area	Kalaupapa Memorial Hospital	Kalaupapa Care Home.	Building	56606		814	N		Kalaupapa Leprosy Settlement Historic District, NHL update 2020* National Park Service Cultural Landscape Inventory Revised 2011***	DOH

Resource Description	Resource Name	Secondary Name	Resource Type	LCS#	State Site # 50-60-03- ####	Park #	Contributing Resource	Significance Criteria	Source	Management (last updated 2015 OR taken from NHL "secondary name" column)
Administrative Area	Kamahana Store	Richard Marks Museum, Old Store -- Marks, Marks' Concession.	Building	59990		260	Y	1, 2, 3, 4, 6* A,B,C,D***	Kalaupapa Leprosy Settlement Historic District, NHL update 2020;* National Park Service Cultural Landscape Inventory Revised 2011***	Private
Administrative Area	Kamehameha Street Stone Culvert		Structure	56535		836	Y	1, 2, 3, 4, 6* A,B,C,D***	Kalaupapa Leprosy Settlement Historic District, NHL update 2020;* National Park Service Cultural Landscape Inventory Revised 2011***	NPS
Administrative Area	Laundry	DOH Carpenter Shop; Carpenter Shop, Maintenance Shop	Building	59978		264	Y	1, 2, 3, 4, 6* A,B,C,D***	Kalaupapa Leprosy Settlement Historic District, NHL update 2020;* National Park Service Cultural Landscape Inventory Revised 2011***	DOH
Administrative Area	Library	Mother Marianne Library.	Building	56607		296	Y	1, 2, 3, 4, 6* A,B,C,D***	Kalaupapa Leprosy Settlement Historic District, NHL update 2020;* National Park Service Cultural Landscape Inventory Revised 2011***	NPS
Administrative Area	Mae Malakaua Residence	DOH House -- Malakaua, DOH - Nishihira.	Building	22629		56	Y	1, 2, 3, 4, 6* A,B,C,D***	Kalaupapa Leprosy Settlement Historic District, NHL update 2020;* National Park Service Cultural Landscape Inventory Revised 2011***	DOH
Administrative Area	Maintenance Shop	Shop Building, NPS Carpenter Shop, Maintenance Shop, Welding Shop.	Building	59979		265	Y	1, 2, 3, 4, 6* A,B,C,D***	Kalaupapa Leprosy Settlement Historic District, NHL update 2020;* National Park Service Cultural Landscape Inventory Revised 2011***	NPS
Administrative Area	Materials Shed	DOH Plumbing Warehouse, Plumbing Shop	Building	59976		263	Y	1, 2, 3, 4, 6* A,B,C,D***	Kalaupapa Leprosy Settlement Historic District, NHL update 2020;* National Park Service Cultural Landscape Inventory Revised 2011***	DOH
Administrative Area	NPS Garage near 302/303		Building			301a	N		Kalaupapa Leprosy Settlement Historic District, NHL update 2020*	NPS
Administrative Area	NPS Maintenance Offices.		Building				Y	1, 2, 3, 4, 6*	Kalaupapa Leprosy Settlement Historic District, NHL update 2020*	NPS
Administrative Area	Oceanside Pavilion	Gazebo.	Structure	59986		638	Y	1, 2, 3, 4, 6* A,B,C,D***	Kalaupapa Leprosy Settlement Historic District, NHL update 2020;* National Park Service Cultural Landscape Inventory Revised 2011***	NPS
Administrative Area	Old Hospital Ruin		Site	21061		282	Y	1, 2, 3, 4, 6* A,B,C,D***	Kalaupapa Leprosy Settlement Historic District, NHL update 2020;* National Park Service Cultural Landscape Inventory Revised 2011***	NPS

Resource Description	Resource Name	Secondary Name	Resource Type	LCS#	State Site # 50-60-03- ####	Park #	Contributing Resource	Significance Criteria	Source	Management (last updated 2015 OR taken from NHL "secondary name" column)
Administrative Area	Old Stone Church	Kalawina (not a name but a descriptive term indicating its affiliation as a Calvinist or Congregational church), Storage (Former Church), Fire House, NPS Ranger Station.	Building	21064		301	Y	1, 2, 3, 4, 6* A,B,C,D***	Kalaupapa Leprosy Settlement Historic District, NHL update 2020;* National Park Service Cultural Landscape Inventory Revised 2011***	NPS
Administrative Area	Outpatient Clinic	Promin Building, Promin House, NPS Headquarters, Dispensary.	Building	22628		7BH	Y	1, 2, 3, 4, 6* A,B,C,D***	Kalaupapa Leprosy Settlement Historic District, NHL update 2020;* National Park Service Cultural Landscape Inventory Revised 2011***	NPS
Administrative Area	Paschoal Hall	Paschoal Community Hall, Kalaupapa Social Hall, Social Hall.	Building	21065		304	Y	1, 2, 3, 4, 6* A,B,C,D***	Kalaupapa Leprosy Settlement Historic District, NHL update 2020;* National Park Service Cultural Landscape Inventory Revised 2011***	NPS
Administrative Area	Patient Store	General Store, Kalaupapa Store.	Building	59982		272	Y	1, 2, 3, 4, 6* A,B,C,D***	Kalaupapa Leprosy Settlement Historic District, NHL update 2020;* National Park Service Cultural Landscape Inventory Revised 2011***	DOH
Administrative Area	Police Headquarter	Jail and Police Station Headquarters	Building	22636		303	Y	1, 2, 3, 4, 6* A,B,C,D***	Kalaupapa Leprosy Settlement Historic District, NHL update 2020;* National Park Service Cultural Landscape Inventory Revised 2011***	NPS
Administrative Area	Post Office	Courthouse, Lion's Club Den.	Building	22687		290	Y	1, 2, 3, 4, 6* A,B,C,D***	Kalaupapa Leprosy Settlement Historic District, NHL update 2020;* National Park Service Cultural Landscape Inventory Revised 2011***	NPS
Administrative Area	Quonset Storage Hut	DOH Lumber Warehouse. World War II surplus Quonset hut located along Damien Road	Building	59977		263a	Y	1, 2, 3, 4, 6* A,B,C,D***	Kalaupapa Leprosy Settlement Historic District, NHL update 2020;* National Park Service Cultural Landscape Inventory Revised 2011***	DOH
Administrative Area	Recreation Court	Tennis court.	Structure	793341		871	Y	1, 2, 3, 4, 6*	Kalaupapa Leprosy Settlement Historic District, NHL update 2020*	NPS
Administrative Area	Restroom		Building	59988		640	Y	1, 2, 3, 4, 6* A,B,C,D***	Kalaupapa Leprosy Settlement Historic District, NHL update 2020;* National Park Service Cultural Landscape Inventory Revised 2011***	NPS
Administrative Area	Shed 623		Building	55809		623	Y	1, 2, 3, 4, 6* A,B,C,D***	Kalaupapa Leprosy Settlement Historic District, NHL update 2020;* National Park Service Cultural Landscape Inventory Revised 2011***	Private

Resource Description	Resource Name	Secondary Name	Resource Type	LCS#	State Site # 50-60-03- ####	Park #	Contributing Resource	Significance Criteria	Source	Management (last updated 2015 OR taken from NHL "secondary name" column)
Administrative Area	Shoichi Hamai Residence	DOH House – Hamai, DOH House – Florek.	Building	59954		53	Y	1, 2, 3, 4, 6* A,B,C,D***	Kalaupapa Leprosy Settlement Historic District, NHL update 2020;* National Park Service Cultural Landscape Inventory Revised 2011***	DOH
Administrative Area	Souza Residence	DOH House – Fujinaka, DOH House – Lelepali, DOH – Guest Cottage 3.	Building	59955		61	Y	1, 2, 3, 4, 6* A,B,C,D***	Kalaupapa Leprosy Settlement Historic District, NHL update 2020;* National Park Service Cultural Landscape Inventory Revised 2011***	DOH
Administrative Area	Storage Shed, Damien Road		Building	793330		641	Y	1, 2, 3, 4, 6* A,B,C,D***	Kalaupapa Leprosy Settlement Historic District, NHL update 2020;* National Park Service Cultural Landscape Inventory Revised 2011***	Private
Administrative Area	Store Warehouse		Building			312	N		Kalaupapa Leprosy Settlement Historic District, NHL update 2020*	DOH
Administrative Area	Vehicle/Equipment Storage	NPS Recycling Center.	Building			259A	N		Kalaupapa Leprosy Settlement Historic District, NHL update 2020*	DOH
Bay View Home	Bay View Building 63 Foundation		Site	1060757		63BV	Y	1, 2, 3, 4, 6*	Kalaupapa Leprosy Settlement Historic District, NHL update 2020*	Private
Bay View Home	Bay View Home Building 1	Bay View 1, DOH House – Keola, Bay View Apartments, NPS – Vacant	Building	21043		1BV	Y	1, 2, 3, 4, 6* A,B,C,D***	Kalaupapa Leprosy Settlement Historic District, NHL update 2020;* National Park Service Cultural Landscape Inventory Revised 2011***	NPS
Bay View Home	Bay View Home Building 10a	Bay View Manager's Cottage, NPS House – Ellis, NPS House – Neuhart	Building	21050		10aBV	Y	1, 2, 3, 4, 6* A,B,C,D***	Kalaupapa Leprosy Settlement Historic District, NHL update 2020;* National Park Service Cultural Landscape Inventory Revised 2011***	NPS
Bay View Home	Bay View Home Building 7 Foundation	Secondary name: Store/Barbershop.	Site	328843		7BV	Y	1, 2, 3, 4, 6* A,B,C,D***	Kalaupapa Leprosy Settlement Historic District, NHL update 2020;* National Park Service Cultural Landscape Inventory Revised 2011***	NPS
Bay View Home	Bay View Home Building 8	Bay View Pool Hall, Bay View Chapel, Bay View Recreation Hall	Building	21049		8BV	Y	1, 2, 3, 4, 6* A,B,C,D***	Kalaupapa Leprosy Settlement Historic District, NHL update 2020;* National Park Service Cultural Landscape Inventory Revised 2011***	NPS
Bay View Home	Bay View Home Dining Hall	Bay View Kitchen	Building	21046		5BV	Y	1, 2, 3, 4, 6* A,B,C,D***	Kalaupapa Leprosy Settlement Historic District, NHL update 2020;* National Park Service Cultural Landscape Inventory Revised 2011***	DOH

Resource Description	Resource Name	Secondary Name	Resource Type	LCS#	State Site # 50-60-03- ####	Park #	Contributing Resource	Significance Criteria	Source	Management (last updated 2015 OR taken from NHL "secondary name" column)
Bay View Home	Bay View Home Entrance Gate		Structure	56521		837	Y	1, 2, 3, 4, 6* A,B,C,D***	Kalaupapa Leprosy Settlement Historic District, NHL update 2020;* National Park Service Cultural Landscape Inventory Revised 2011***	NPS
Bay View Home	Bay View Home Residence 2	Bay View 2, Bay View Apartments, Bay View Dormitory, NPS – Dormitory	Building	21044		2BV	Y	1, 2, 3, 4, 6* A,B,C,D***	Kalaupapa Leprosy Settlement Historic District, NHL update 2020;* National Park Service Cultural Landscape Inventory Revised 2011***	NPS
Bay View Home	Bay View Home Residence 3	Bay View 3, DOH House – Uga, Bay View Apartments, DOH – Laundry	Building	21045		3BV	Y	1, 2, 3, 4, 6* A,B,C,D***	Kalaupapa Leprosy Settlement Historic District, NHL update 2020;* National Park Service Cultural Landscape Inventory Revised 2011***	DOH
Bay View Home	Bay View Sidewalks		Structure	573960		860	Y	1, 2, 3, 4, 6* A,B,C,D***	Kalaupapa Leprosy Settlement Historic District, NHL update 2020;* National Park Service Cultural Landscape Inventory Revised 2011***	NPS
Bay View Home	Carport 526		Building	55720		526BV	Y	1, 2, 3, 4, 6* A,B,C,D***	Kalaupapa Leprosy Settlement Historic District, NHL update 2020;* National Park Service Cultural Landscape Inventory Revised 2011***	DOH
Bay View Home	Carport/Garage	Garage 513	Building	55723		513BV	Y	1, 2, 3, 4, 6*	Kalaupapa Leprosy Settlement Historic District, NHL update 2020*	NPS
Bay View Home	Elroy Malo Residence	Secondary name: DOH House – Malo	Building	56512		64BV	Y	1, 2, 3, 4, 6* A,B,C,D***	Kalaupapa Leprosy Settlement Historic District, NHL update 2020;* National Park Service Cultural Landscape Inventory Revised 2011***	DOH
Bay View Home	Garage 512		Building	55722		512BV	Y	1, 2, 3, 4, 6* A,B,C,D***	Kalaupapa Leprosy Settlement Historic District, NHL update 2020;* National Park Service Cultural Landscape Inventory Revised 2011***	DOH
Bay View Home	Garage 524		Building	55718		524BV	Y	1, 2, 3, 4, 6* A,B,C,D***	Kalaupapa Leprosy Settlement Historic District, NHL update 2020;* National Park Service Cultural Landscape Inventory Revised 2011***	Private
Bay View Home	Garage 525		Building	55719		525BV	Y	1, 2, 3, 4, 6* A,B,C,D***	Kalaupapa Leprosy Settlement Historic District, NHL update 2020;* National Park Service Cultural Landscape Inventory Revised 2011***	Private

Resource Description	Resource Name	Secondary Name	Resource Type	LCS#	State Site # 50-60-03- ####	Park #	Contributing Resource	Significance Criteria	Source	Management (last updated 2015 OR taken from NHL "secondary name" column)
Bay View Home	Inouye Residence		Building	56511		11BV	Y	1, 2, 3, 4, 6* A,B,C,D***	Kalaupapa Leprosy Settlement Historic District, NHL update 2020;* National Park Service Cultural Landscape Inventory Revised 2011***	DOH
Bay View Home	Lanai 528		Structure	55721		528BV	Y	1, 2, 3, 4, 6* A,B,C,D***	Kalaupapa Leprosy Settlement Historic District, NHL update 2020;* National Park Service Cultural Landscape Inventory Revised 2011***	DOH
Bay View Home	Old Bay View Kitchen and Dining Room	Bay View Old Kitchen, NPS Natural Resource Office	Building	21047		6BV	Y	1, 2, 3, 4, 6* A,B,C,D***	Kalaupapa Leprosy Settlement Historic District, NHL update 2020;* National Park Service Cultural Landscape Inventory Revised 2011***	NPS
Bay View Home	Patients' Restroom		Building	22638		523BV	Y	1, 2, 3, 4, 6* A,B,C,D***	Kalaupapa Leprosy Settlement Historic District, NHL update 2020;* National Park Service Cultural Landscape Inventory Revised 2011***	NPS
Bay View Home	Quonset Dormitory	Secondary names: Bay View Home – Dormitory, NPS/DOH Housing.	Building	338860		10BV	Y	1, 2, 3, 4, 6* A,B,C,D***	Kalaupapa Leprosy Settlement Historic District, NHL update 2020;* National Park Service Cultural Landscape Inventory Revised 2011***	NPS
Bay View Home	Telephone Station		Building	59993		522BV (122BV on NPS bldg list)	Y	1, 2, 3, 4, 6* A,B,C,D***	Kalaupapa Leprosy Settlement Historic District, NHL update 2020;* National Park Service Cultural Landscape Inventory Revised 2011***	NPS
Bay View Home	Tool Shed		Building	573881		3aBV	Y	1, 2, 3, 4, 6* A,B,C,D***	Kalaupapa Leprosy Settlement Historic District, NHL update 2020;* National Park Service Cultural Landscape Inventory Revised 2011***	
Bay View Home	Transformer Statio		Building	342032		519BV (519 on NPS bldg list)	Y	1, 2, 3, 4, 6* A,B,C,D***	Kalaupapa Leprosy Settlement Historic District, NHL update 2020;* National Park Service Cultural Landscape Inventory Revised 2011***	NPS
Bay View Home	Visitor Quarter Sidewalks			573965		862	Y	A,B,C,D***	National Park Service Cultural Landscape Inventory Revised 2011***	NPS
Bay View Home	Visitors' Pavilion	Separation House, Separation Hall, Visitor/Patient Meeting Hall, Long House	Building	21069		278BV	Y	1, 2, 3, 4, 6* A,B,C,D***	Kalaupapa Leprosy Settlement Historic District, NHL update 2020;* National Park Service Cultural Landscape Inventory Revised 2011***	DOH

Resource Description	Resource Name	Secondary Name	Resource Type	LCS#	State Site # 50-60-03- ####	Park #	Contributing Resource	Significance Criteria	Source	Management (last updated 2015 OR taken from NHL "secondary name" column)
Bay View Home	Visitors' Quarters		Building	21051		274BV	Y	1, 2, 3, 4, 6* A,B,C,D***	Kalaupapa Leprosy Settlement Historic District, NHL update 2020;* National Park Service Cultural Landscape Inventory Revised 2011***	DOH
Bay View Home	Visitors' Quarters Kitchen		Building	56539		275BV	Y	1, 2, 3, 4, 6* A,B,C,D***	Kalaupapa Leprosy Settlement Historic District, NHL update 2020;* National Park Service Cultural Landscape Inventory Revised 2011***	DOH
Bay View Home	Wilcox Memorial Building	Visitors' Quarters, Wilcox Visitors' Quarters, Guest Matron House	Building	21052		277BV	Y	1, 2, 3, 4, 6* A,B,C,D***	Kalaupapa Leprosy Settlement Historic District, NHL update 2020;* National Park Service Cultural Landscape Inventory Revised 2011***	DOH
Bishop Home	Barbara Marks Residence	DOH House – B. Marks	Building	56499		3BH	Y	1, 2, 3, 4, 6* A,B,C,D***	Kalaupapa Leprosy Settlement Historic District, NHL update 2020;* National Park Service Cultural Landscape Inventory Revised 2011***	DOH
Bishop Home	Bishop Home Bake Oven	Portuguese Oven	Structure	56529		835	Y	1, 2, 3, 4, 6* A,B,C,D***	Kalaupapa Leprosy Settlement Historic District, NHL update 2020;* National Park Service Cultural Landscape Inventory Revised 2011***	NPS
Bishop Home	Bishop Home Boiler Plant		Building	343769		7aBH	Y	1, 2, 3, 4, 6* A,B,C,D***	Kalaupapa Leprosy Settlement Historic District, NHL update 2020;* National Park Service Cultural Landscape Inventory Revised 2011***	
Bishop Home	Bishop Home Carport		Building	573877		3aBH	N		Kalaupapa Leprosy Settlement Historic District, NHL update 2020* National Park Service Cultural Landscape Inventory Revised 2011***	Private
Bishop Home	Bishop Home Cistern	Bishop Home Well	Structure	56530		834	Y	1, 2, 3, 4, 6* A,B,C,D***	Kalaupapa Leprosy Settlement Historic District, NHL update 2020;* National Park Service Cultural Landscape Inventory Revised 2011***	nPS
Bishop Home	Bishop Home Flagpole		Object	56531		833	Y	1, 2, 3, 4, 6* A,B,C,D***	Kalaupapa Leprosy Settlement Historic District, NHL update 2020;* National Park Service Cultural Landscape Inventory Revised 2011***	NPS
Bishop Home	Bishop Home for Girls	Nuns' Residence, Bishop Home Convent, Sisters' Convent	Building	21041		15BH	Y	1, 2, 3, 4, 6* A,B,C,D***	Kalaupapa Leprosy Settlement Historic District, NHL update 2020;* National Park Service Cultural Landscape Inventory Revised 2011***	NPS

Resource Description	Resource Name	Secondary Name	Resource Type	LCS#	State Site # 50-60-03- ####	Park #	Contributing Resource	Significance Criteria	Source	Management (last updated 2015 OR taken from NHL "secondary name" column)
Bishop Home	Bishop Home Grave			56649		T-2	Y	A,B,C,D***	National Park Service Cultural Landscape Inventory Revised 2011***	
Bishop Home	Bishop Home Kitchen/ Dining Hall Ruin		Site	1060885		5BH	Y	1, 2, 3, 4, 6*	Kalaupapa Leprosy Settlement Historic District, NHL update 2020*	NPS
Bishop Home	Bishop Home Laundry Foundation Ruin		Site	344203		8BH	Y	1, 2, 3, 4, 6* A,B,C,D***	Kalaupapa Leprosy Settlement Historic District, NHL update 2020; * National Park Service Cultural Landscape Inventory Revised 2011***	NPS
Bishop Home	Bishop Home Picket Fence and Gate		Structure	56527		831	Y	1, 2, 3, 4, 6* A,B,C,D***	Kalaupapa Leprosy Settlement Historic District, NHL update 2020; * National Park Service Cultural Landscape Inventory Revised 2011***	NPS
Bishop Home	Bishop Home Residence 4	Una Residence, DOH House – Una	Building	56500		4BH	Y	1, 2, 3, 4, 6* A,B,C,D***	Kalaupapa Leprosy Settlement Historic District, NHL update 2020; * National Park Service Cultural Landscape Inventory Revised 2011***	DOH
Bishop Home	Bishop Home Roads and Curbs		Structure	56528		832	Y	1, 2, 3, 4, 6* A,B,C,D***	Kalaupapa Leprosy Settlement Historic District, NHL update 2020; * National Park Service Cultural Landscape Inventory Revised 2011***	NPS
Bishop Home	Bishop Home Shed Ruin		Site			4aBH	N		Kalaupapa Leprosy Settlement Historic District, NHL update 2020*	Private
Bishop Home	Bishop Home Sidewalks		Structure	573963		861	Y	1, 2, 3, 4, 6* A,B,C,D***	Kalaupapa Leprosy Settlement Historic District, NHL update 2020; * National Park Service Cultural Landscape Inventory Revised 2011***	NPS
Bishop Home	Bishop Home Social Hall Ruin	Bishop Home Building No. 1 Ruins	Site	56612		1BH	Y	1, 2, 3, 4, 6* A,B,C,D***	Kalaupapa Leprosy Settlement Historic District, NHL update 2020; * National Park Service Cultural Landscape Inventory Revised 2011***	NPS
Bishop Home	Bishop Home Store Room Foundation		Site	793329		6BH	Y	1, 2, 3, 4, 6* A,B,C,D***	Kalaupapa Leprosy Settlement Historic District, NHL update 2020; * National Park Service Cultural Landscape Inventory Revised 2011***	NPS
Bishop Home	Bishop Home Walls and Entrance Gates		Structure	56526		830	Y	1, 2, 3, 4, 6* A,B,C,D***	Kalaupapa Leprosy Settlement Historic District, NHL update 2020; * National Park Service Cultural Landscape Inventory Revised 2011***	NPS

Resource Description	Resource Name	Secondary Name	Resource Type	LCS#	State Site # 50-60-03- ####	Park #	Contributing Resource	Significance Criteria	Source	Management (last updated 2015 OR taken from NHL "secondary name" column)
Bishop Home	Cemetery T		Site				Y	1, 2, 3, 4, 6* A,B,C,D***	Kalaupapa Leprosy Settlement Historic District, NHL update 2020;* National Park Service Cultural Landscape Inventory Revised 2011***	NPS
Bishop Home	Father Damien Monument		Object	59950		807	Y	1, 2, 3, 4, 6* A,B,C,D***	Kalaupapa Leprosy Settlement Historic District, NHL update 2020;* National Park Service Cultural Landscape Inventory Revised 2011***	NPS
Bishop Home	Kato Painted Signs and Rocks		Object				Y	1, 2, 3, 4, 6*	Kalaupapa Leprosy Settlement Historic District, NHL update 2020*	NPS
Bishop Home	Mother Marianne Cope Grave Marker	Cemetery I; Mother Marianne Monument	Object	56516		839	Y	1, 2, 3, 4, 6* A,B,C,D***	Kalaupapa Leprosy Settlement Historic District, NHL update 2020;* National Park Service Cultural Landscape Inventory Revised 2011***	NPS
Bishop Home	Shed West of 3BH		Building				N		Kalaupapa Leprosy Settlement Historic District, NHL update 2020*	
Bishop Home	St. Anthony Statue	Numbers attributed to "St. Francis Statue at Bishop Home" in CLI - no mention of St. Anthony in CLI	Object	345314		855	N		Kalaupapa Leprosy Settlement Historic District, NHL update 2020* National Park Service Cultural Landscape Inventory Revised 2011***	NPS
Bishop Home	St. Elizabeth Chapel	Convent Chapel	Building	21042		16BH	Y	1, 2, 3, 4, 6* A,B,C,D***	Kalaupapa Leprosy Settlement Historic District, NHL update 2020;* National Park Service Cultural Landscape Inventory Revised 2011***	Partner
Īliopi'i Beach House Area	Īliopi'i Fishpond		Site		1913, 1926, and 1927		Y	1, 2, 3, 4, 6*	Kalaupapa Leprosy Settlement Historic District, NHL update 2020*	NPS
Īliopi'i Beach House Area	Bernard Punikai'a Beach House	Airport Road Beach House 2, Airport Road Beach House 699.	Building	56122		699	Y	1, 2, 3, 4, 6* A,B,C,D***	Kalaupapa Leprosy Settlement Historic District, NHL update 2020;* National Park Service Cultural Landscape Inventory Revised 2011***	Private
Īliopi'i Beach House Area	Building 690		Building	56207		690	Y	1, 2, 3, 4, 6* A,B,C,D***	Kalaupapa Leprosy Settlement Historic District, NHL update 2020;* National Park Service Cultural Landscape Inventory Revised 2011***	Private
Īliopi'i Beach House Area	Elaine Remigio Beach House	Clarence and Ivy Kahilihiwa Beach House.	Building	336829		695	Y	1, 2, 3, 4, 6* A,B,C,D***	Kalaupapa Leprosy Settlement Historic District, NHL update 2020;* National Park Service Cultural Landscape Inventory Revised 2011***	Private

Resource Description	Resource Name	Secondary Name	Resource Type	LCS#	State Site # 50-60-03- ####	Park #	Contributing Resource	Significance Criteria	Source	Management (last updated 2015 OR taken from NHL "secondary name" column)
Iliopi'i Beach House Area	Elizabeth Bell Beach House	Ku'uilei Bell Beach House.	Building	101911		698	Y	1, 2, 3, 4, 6* A,B,C,D***	Kalaupapa Leprosy Settlement Historic District, NHL update 2020;* National Park Service Cultural Landscape Inventory Revised 2011***	Private
Iliopi'i Beach House Area	Lion's Club Restroom 687		Building	55730		687	Y	1, 2, 3, 4, 6* A,B,C,D***	Kalaupapa Leprosy Settlement Historic District, NHL update 2020;* National Park Service Cultural Landscape Inventory Revised 2011***	Private
Iliopi'i Beach House Area	Lion's Pavilion	Ocean View Pavilion.	Structure	56611		688	Y	1, 2, 3, 4, 6* A,B,C,D***	Kalaupapa Leprosy Settlement Historic District, NHL update 2020;* National Park Service Cultural Landscape Inventory Revised 2011***	Private
Iliopi'i Beach House Area	Meli and Randall Watanuki Beach House	Beach House 722.	Building			722	N		Kalaupapa Leprosy Settlement Historic District, NHL update 2020*	Private
Iliopi'i Beach House Area	Nicholas Ramos Beach House	Airport Road Beach House 5.	Building	56196		691	Y	1, 2, 3, 4, 6* A,B,C,D***	Kalaupapa Leprosy Settlement Historic District, NHL update 2020;* National Park Service Cultural Landscape Inventory Revised 2011***	Private
Iliopi'i Beach House Area	Richard and Gloria Marks Beach House		Building	342319		694	N		Kalaupapa Leprosy Settlement Historic District, NHL update 2020* National Park Service Cultural Landscape Inventory Revised 2011***	Private
Iliopi'i Beach House Area	Richard Marks Beach House	Airport Road Beach House 1	Building	56121		702	Y	1, 2, 3, 4, 6* A,B,C,D***	Kalaupapa Leprosy Settlement Historic District, NHL update 2020;* National Park Service Cultural Landscape Inventory Revised 2011***	Private
Iliopi'i Beach House Area	Shelter 1	Lion's Club Bar	Structure			727	N		Kalaupapa Leprosy Settlement Historic District, NHL update 2020*	Private
Iliopi'i Beach House Area	Shelter 2	Lion's Club Kitchen	Structure			728	N		Kalaupapa Leprosy Settlement Historic District, NHL update 2020*	Private
Iliopi'i Beach House Area	Shoichi Hamai Beach House	Elizabeth Kahihikolo Beach House; Aunt Elizabeth's Beach House; Airport Beach House 693, Single Beach House.	Building	59701		693	N		Kalaupapa Leprosy Settlement Historic District, NHL update 2020* National Park Service Cultural Landscape Inventory Revised 2011***	Private
Kalaupapa Archeological Site	'Ahina Heiau		Site		286	919	Y	1, 2, 3, 4, 6* A,B,C,D***	Kalaupapa Leprosy Settlement Historic District, NHL update 2020;* National Park Service Cultural Landscape Inventory Revised 2011***	NPS
Kalaupapa Archeological Site	Ahupua'a Shrine		Site			914	Y	1, 2, 3, 4, 6*	Kalaupapa Leprosy Settlement Historic District, NHL update 2020*	NPS

Resource Description	Resource Name	Secondary Name	Resource Type	LCS#	State Site # 50-60-03- ####	Park #	Contributing Resource	Significance Criteria	Source	Management (last updated 2015 OR taken from NHL "secondary name" column)
Kalaupapa Archeological Site	All Recorded and Unrecorded Sites on Kalaupapa Peninsula		Site				Y	1, 2, 3, 4, 6*	Kalaupapa Leprosy Settlement Historic District, NHL update 2020*	NPS
Kalaupapa Archeological Site	Ananāluawāhine Cave	Old Ladies Cave	Site		290	917	Y	1, 2, 3, 4, 6* A,B,C,D***	Kalaupapa Leprosy Settlement Historic District, NHL update 2020;* National Park Service Cultural Landscape Inventory Revised 2011***	NPS
Kalaupapa Archeological Site	Burial Grounds of Makapulapai		Site		1928	911	Y	1, 2, 3, 4, 6* A,B,C,D***	Kalaupapa Leprosy Settlement Historic District, NHL update 2020;* National Park Service Cultural Landscape Inventory Revised 2011***	NPS
Kalaupapa Archeological Site	Heiau on Damien Road		Site			904	Y	1, 2, 3, 4, 6* A,B,C,D***	Kalaupapa Leprosy Settlement Historic District, NHL update 2020;* National Park Service Cultural Landscape Inventory Revised 2011***	NPS
Kalaupapa Archeological Site	Hōlua and Heiau		Site		293	903	Y	1, 2, 3, 4, 6* A,B,C,D***	Kalaupapa Leprosy Settlement Historic District, NHL update 2020;* National Park Service Cultural Landscape Inventory Revised 2011***	NPS
Kalaupapa Archeological Site	Kalaehala Heiau		Site		287	919	Y	1, 2, 3, 4, 6* A,B,C,D***	Kalaupapa Leprosy Settlement Historic District, NHL update 2020;* National Park Service Cultural Landscape Inventory Revised 2011***	NPS
Kalaupapa Archeological Site	Kalaupapa Prehistoric C-Shaped Enclosures		Site			925	Y	1, 2, 3, 4, 6* A,B,C,D***	Kalaupapa Leprosy Settlement Historic District, NHL update 2020;* National Park Service Cultural Landscape Inventory Revised 2011***	NPS
Kalaupapa Archeological Site	Kalaupapa Prehistoric Rock Alignments		Site			923	Y	1, 2, 3, 4, 6* A,B,C,D***	Kalaupapa Leprosy Settlement Historic District, NHL update 2020;* National Park Service Cultural Landscape Inventory Revised 2011***	NPS
Kalaupapa Archeological Site	Kalaupapa Prehistoric Rock Enclosures		Site			922	Y	1, 2, 3, 4, 6*	Kalaupapa Leprosy Settlement Historic District, NHL update 2020*	NPS
Kalaupapa Archeological Site	Kalaupapa Prehistoric Rock Walls		Site			921	Y	1, 2, 3, 4, 6* A,B,C,D***	Kalaupapa Leprosy Settlement Historic District, NHL update 2020;* National Park Service Cultural Landscape Inventory Revised 2011***	NPS
Kalaupapa Archeological Site	Kamanuolalo Heiau		Site		302	900	Y	1, 2, 3, 4, 6* A,B,C,D***	Kalaupapa Leprosy Settlement Historic District, NHL update 2020;* National Park Service Cultural Landscape Inventory Revised 2011***	NPS

Resource Description	Resource Name	Secondary Name	Resource Type	LCS#	State Site # 50-60-03- ####	Park #	Contributing Resource	Significance Criteria	Source	Management (last updated 2015 OR taken from NHL "secondary name" column)
Kalaupapa Archeological Site	Kapua Heiau		Site		292	906	Y	1, 2, 3, 4, 6*	Kalaupapa Leprosy Settlement Historic District, NHL update 2020*	NPS
Kalaupapa Archeological Site	Kauhakō Crater Sites		Site		1180-1894, 2406-2467		Y	1, 2, 3, 4, 6*	Kalaupapa Leprosy Settlement Historic District, NHL update 2020*	NPS
Kalaupapa Archeological Site	Kaupikiawa Cave		Site		312	916	Y	1, 2, 3, 4, 6* A,B,C,D***	Kalaupapa Leprosy Settlement Historic District, NHL update 2020;* National Park Service Cultural Landscape Inventory Revised 2011***	NPS
Kalaupapa Archeological Site	Kawaha'alihi Heiau		Site		289	908	Y	1, 2, 3, 4, 6*	Kalaupapa Leprosy Settlement Historic District, NHL update 2020*	NPS
Kalaupapa Archeological Site	Ko'a at Ho'olehua		Site		297	913	Y	1, 2, 3, 4, 6* A,B,C,D***	Kalaupapa Leprosy Settlement Historic District, NHL update 2020;* National Park Service Cultural Landscape Inventory Revised 2011***	NPS
Kalaupapa Archeological Site	Ko'a at Kaupikiawa		Site		291	915	Y	1, 2, 3, 4, 6*	Kalaupapa Leprosy Settlement Historic District, NHL update 2020*	NPS
Kalaupapa Archeological Site	Ko'a at Wai'ale'ia		Site		288	909	Y	1, 2, 3, 4, 6* A,B,C,D***	Kalaupapa Leprosy Settlement Historic District, NHL update 2020;* National Park Service Cultural Landscape Inventory Revised 2011***	NPS
Kalaupapa Archeological Site	Kuahu Heiau (aka The Church of Jesus Christ of Latter Day Saints Church Heiau)		Site		299	902	Y	1, 2, 3, 4, 6* A,B,C,D***	Kalaupapa Leprosy Settlement Historic District, NHL update 2020;* National Park Service Cultural Landscape Inventory Revised 2011***	NPS
Kalaupapa Archeological Site	Makanalua/Kalawao Boundary Wall		Site			920	Y	1, 2, 3, 4, 6* A,B,C,D***	Kalaupapa Leprosy Settlement Historic District, NHL update 2020;* National Park Service Cultural Landscape Inventory Revised 2011***	NPS
Kalaupapa Archeological Site	Nihoa Complex		Site		304		Y	1, 2, 3, 4, 6*	Kalaupapa Leprosy Settlement Historic District, NHL update 2020*	NPS
Kalaupapa Archeological Site	Undocumented Heiau at Lava Gulch		Site			912	Y	1, 2, 3, 4, 6* A,B,C,D***	Kalaupapa Leprosy Settlement Historic District, NHL update 2020;* National Park Service Cultural Landscape Inventory Revised 2011***	NPS
Kalaupapa Archeological Site	Unidentified Heiau behind Damien Road Heiau		Site			905	Y	1, 2, 3, 4, 6* A,B,C,D***	Kalaupapa Leprosy Settlement Historic District, NHL update 2020;* National Park Service Cultural Landscape Inventory Revised 2011***	NPS

Resource Description	Resource Name	Secondary Name	Resource Type	LCS#	State Site # 50-60-03- ####	Park #	Contributing Resource	Significance Criteria	Source	Management (last updated 2015 OR taken from NHL "secondary name" column)
Kalaupapa Archeological Site	Unidentified Heiau northwest of site 289		Site			907	Y	1, 2, 3, 4, 6* A,B,C,D***	Kalaupapa Leprosy Settlement Historic District, NHL update 2020;* National Park Service Cultural Landscape Inventory Revised 2011***	NPS
Kalaupapa Archeological Site	Unnamed Heiau near site 302		Site			901	Y	1, 2, 3, 4, 6* A,B,C,D***	Kalaupapa Leprosy Settlement Historic District, NHL update 2020;* National Park Service Cultural Landscape Inventory Revised 2011***	NPS
Kalaupapa Churches	Building 637		Building	101951		637	Y	1, 2, 3, 4, 6* A,B,C,D***	Kalaupapa Leprosy Settlement Historic District, NHL update 2020;* National Park Service Cultural Landscape Inventory Revised 2011***	Private
Kalaupapa Churches	Calvinist Parsonage	Kahu House, Calvinist Mission House, Kana'ana Hou Mission House.	Building	59994		288	Y	1, 2, 3, 4, 6* A,B,C,D***	Kalaupapa Leprosy Settlement Historic District, NHL update 2020;* National Park Service Cultural Landscape Inventory Revised 2011***	Unknown: DOH or Partner
Kalaupapa Churches	Damien Hall	Damien Social Hall, St. Francis Church Library, St. Francis Church Social Hall.	Building	56536		292	Y	1, 2, 3, 4, 6* A,B,C,D***	Kalaupapa Leprosy Settlement Historic District, NHL update 2020;* National Park Service Cultural Landscape Inventory Revised 2011***	Partner
Kalaupapa Churches	Garage		Building	573907		289	Y	1, 2, 3, 4, 6* A,B,C,D***	Kalaupapa Leprosy Settlement Historic District, NHL update 2020;* National Park Service Cultural Landscape Inventory Revised 2011***	Private
Kalaupapa Churches	Grotto at Saint Francis Church	Grotto for Our Lady of Lourdes and St. Bernadette, St. Francis Church Shrine.	Structure	56520		827	Y	1, 2, 3, 4, 6* A,B,C,D***	Kalaupapa Leprosy Settlement Historic District, NHL update 2020;* National Park Service Cultural Landscape Inventory Revised 2011***	Partner
Kalaupapa Churches	Kamehameha Street Residence 256	The Church of Jesus Christ of the Latter Day Saints Rectory, Mission House.	Building	59971		256	Y	1, 2, 3, 4, 6* A,B,C,D***	Kalaupapa Leprosy Settlement Historic District, NHL update 2020;* National Park Service Cultural Landscape Inventory Revised 2011***	Partner
Kalaupapa Churches	Kana'ana Hou Church	Protestant Church, Kana'ana Hou Calvinist Church, Unitarian Church.	Building	21062		286	Y	1, 2, 3, 4, 6* A,B,C,D***	Kalaupapa Leprosy Settlement Historic District, NHL update 2020;* National Park Service Cultural Landscape Inventory Revised 2011***	Partner
Kalaupapa Churches	Kana'ana Hou Church Parish Hall	Protestant Parish Hall, Wilcox Social Hall.	Building	342044		287	Y	1, 2, 3, 4, 6* A,B,C,D***	Kalaupapa Leprosy Settlement Historic District, NHL update 2020;* National Park Service Cultural Landscape Inventory Revised 2011***	Partner

Resource Description	Resource Name	Secondary Name	Resource Type	LCS#	State Site # 50-60-03- ####	Park #	Contributing Resource	Significance Criteria	Source	Management (last updated 2015 OR taken from NHL "secondary name" column)
Kalaupapa Churches	Kana'ana Hou Churchyard Walls and Gates		Structure	56523		841	Y	1, 2, 3, 4, 6* A,B,C,D***	Kalaupapa Leprosy Settlement Historic District, NHL update 2020;* National Park Service Cultural Landscape Inventory Revised 2011***	NPS
Kalaupapa Churches	Latter Day Saints Churchyard Walls and Gate		Structure	56525		842	Y	1, 2, 3, 4, 6* A,B,C,D***	Kalaupapa Leprosy Settlement Historic District, NHL update 2020;* National Park Service Cultural Landscape Inventory Revised 2011***	NPS
Kalaupapa Churches	Latter Day Saints Parish Hall	The Church of Jesus Christ of the Latter Day Saints Social Hall.	Building	59972		257A	Y	1, 2, 3, 4, 6* A,B,C,D***	Kalaupapa Leprosy Settlement Historic District, NHL update 2020;* National Park Service Cultural Landscape Inventory Revised 2011***	Private
Kalaupapa Churches	The Church of Jesus Christ of Latter Day Saints Church Monument		Object	56514		846	Y	1, 2, 3, 4, 6* A,B,C,D***	Kalaupapa Leprosy Settlement Historic District, NHL update 2020;* National Park Service Cultural Landscape Inventory Revised 2011***	Partner
Kalaupapa Churches	The Church of Jesus Chris of Latter Day Saints Church Church	The Church of Jesus Christ of the Latter Day Saints Church.	Building	56610		257	Y	1, 2, 3, 4, 6* A,B,C,D***	Kalaupapa Leprosy Settlement Historic District, NHL update 2020;* National Park Service Cultural Landscape Inventory Revised 2011***	Private
Kalaupapa Churches	School Street Hot House	Kana'ana Hou Church Hothouse.	Structure	573530		636	N		Kalaupapa Leprosy Settlement Historic District, NHL update 2020*	Private
Kalaupapa Churches	Shade House	St. Francis Church Hothouse.	Structure	573929		648	N		Kalaupapa Leprosy Settlement Historic District, NHL update 2020*	Private
Kalaupapa Churches	St. Francis Catholic Church	St. Francis Church.	Building	21063		291	Y	1, 2, 3, 4, 6* A,B,C,D***	Kalaupapa Leprosy Settlement Historic District, NHL update 2020;* National Park Service Cultural Landscape Inventory Revised 2011***	Partner
Kalaupapa Churches	St. Francis Catholic Church Bell Memorial		Object	56519		828	Y	1, 2, 3, 4, 6* A,B,C,D***	Kalaupapa Leprosy Settlement Historic District, NHL update 2020;* National Park Service Cultural Landscape Inventory Revised 2011***	Partner
Kalaupapa Churches	St. Francis Church Garage		Building	56537		647	Y	1, 2, 3, 4, 6* A,B,C,D***	Kalaupapa Leprosy Settlement Historic District, NHL update 2020;* National Park Service Cultural Landscape Inventory Revised 2011***	Private
Kalaupapa Churches	St. Francis Church Rectory	Church Rectory.	Building	56502		294	Y	1, 2, 3, 4, 6* A,B,C,D***	Kalaupapa Leprosy Settlement Historic District, NHL update 2020;* National Park Service Cultural Landscape Inventory Revised 2011***	NPS / Partner

Resource Description	Resource Name	Secondary Name	Resource Type	LCS#	State Site # 50-60-03- ####	Park #	Contributing Resource	Significance Criteria	Source	Management (last updated 2015 OR taken from NHL "secondary name" column)
Kalaupapa Churches	St. Francis Churchyard Walls and Gates		Structure	56524		825	Y	1, 2, 3, 4, 6* A,B,C,D***	Kalaupapa Leprosy Settlement Historic District, NHL update 2020;* National Park Service Cultural Landscape Inventory Revised 2011***	NPS
Kalaupapa Churches	Statue of the Sacred Heart of Jesus		Object	59987		826	Y	1, 2, 3, 4, 6* A,B,C,D***	Kalaupapa Leprosy Settlement Historic District, NHL update 2020;* National Park Service Cultural Landscape Inventory Revised 2011***	Partner
Kalaupapa Electrical System	Bishop Home Generator Slab		Site				Y	1, 2, 3, 4, 6*	Kalaupapa Leprosy Settlement Historic District, NHL update 2020;*	NPS
Kalaupapa Electrical System	Kalaupapa Electrical System		Structure				Y	1, 2, 3, 4, 6*	Kalaupapa Leprosy Settlement Historic District, NHL update 2020;*	NPS
Kalawao	"Downtown" Kalawao		Site		2431	Flexner Site 12	Y	1, 2, 3, 4, 6*	Kalaupapa Leprosy Settlement Historic District, NHL update 2020*	NPS
Kalawao	"Fraid House" Ruin	Storm Shelter Ruin	Site	56557			Y	1, 2, 3, 4, 6* A,B,C,D***	Kalaupapa Leprosy Settlement Historic District, NHL update 2020;* National Park Service Cultural Landscape Inventory Revised 2011***	NPS
Kalawao	Administrator's House Ruin	Doctor's Residence Ruin	Site	56556		821	Y	1, 2, 3, 4, 6* A,B,C,D***	Kalaupapa Leprosy Settlement Historic District, NHL update 2020;* National Park Service Cultural Landscape Inventory Revised 2011***	NPS
Kalawao	Baldwin Home for Boys Ruin	Old Baldwin Home, Old Baldwin Home for Boys	Site	21177		801	Y	1, 2, 3, 4, 6* A,B,C,D***	Kalaupapa Leprosy Settlement Historic District, NHL update 2020;* National Park Service Cultural Landscape Inventory Revised 2011***	NPS
Kalawao	Baldwin Home Kitchen Ruin, Kalawao		Site	56603		848	Y	1, 2, 3, 4, 6* A,B,C,D***	Kalaupapa Leprosy Settlement Historic District, NHL update 2020;* National Park Service Cultural Landscape Inventory Revised 2011***	NPS
Kalawao	Cemetery P – Siloama Churchyard		Site				Y	1, 2, 3, 4, 6* A,B,C,D***	Kalaupapa Leprosy Settlement Historic District, NHL update 2020;* National Park Service Cultural Landscape Inventory Revised 2011***	NPS
Kalawao	Cemetery Q – St. Philomena Churchyard		Site				Y	1, 2, 3, 4, 6* A,B,C,D***	Kalaupapa Leprosy Settlement Historic District, NHL update 2020;* National Park Service Cultural Landscape Inventory Revised 2011***	NPS

Resource Description	Resource Name	Secondary Name	Resource Type	LCS#	State Site # 50-60-03- ####	Park #	Contributing Resource	Significance Criteria	Source	Management (last updated 2015 OR taken from NHL "secondary name" column)
Kalawao	Cemetery R – Kalawao Cemetery (North)/ Cemetery S – Kalawao Cemetery (South)	Moku Puakala	Site				Y	1, 2, 3, 4, 6* A,B,C,D***	Kalaupapa Leprosy Settlement Historic District, NHL update 2020;* National Park Service Cultural Landscape Inventory Revised 2011***	NPS
Kalawao	Cistern Area North		Site		2422	Flexner Site 3)	Y	1, 2, 3, 4, 6*	Kalaupapa Leprosy Settlement Historic District, NHL update 2020*	NPS
Kalawao	Cistern Area South		Site		2430	Flexner Site 11	Y	1, 2, 3, 4, 6*	Kalaupapa Leprosy Settlement Historic District, NHL update 2020*	NPS
Kalawao	Coastal Plain		Site		2424	Flexner Site 5	Y	1, 2, 3, 4, 6*	Kalaupapa Leprosy Settlement Historic District, NHL update 2020*	NPS
Kalawao	East Coast Peninsula Pier	Crane Site, the Boom Site, Boom Site Landing	Site	793338		868	Y	1, 2, 3, 4, 6* A,B,C,D***	Kalaupapa Leprosy Settlement Historic District, NHL update 2020;* National Park Service Cultural Landscape Inventory Revised 2011***	NPS
Kalawao	Judd Park Pavilion	Kalawao Pavilion, Kalawao Picnic Pavilion, Kalawao Pavilion – Judd Park	Structure	342332		719	Y	1, 2, 3, 4, 6* A,B,C,D***	Kalaupapa Leprosy Settlement Historic District, NHL update 2020;* National Park Service Cultural Landscape Inventory Revised 2011***	NPS
Kalawao	Kalawao Bakery Chimney Ruin	Bakery Area	Site	21180	2420	804, Flexner Site 1	Y	1, 2, 3, 4, 6* A,B,C,D***	Kalaupapa Leprosy Settlement Historic District, NHL update 2020;* National Park Service Cultural Landscape Inventory Revised 2011***	NPS
Kalawao	Kalawao Picnic Shelters 1 and 2		Structure	573935		725 and 726	Y	1, 2, 3, 4, 6* A,B,C,D***	Kalaupapa Leprosy Settlement Historic District, NHL update 2020;* National Park Service Cultural Landscape Inventory Revised 2011***	NPS
Kalawao	Kalawao Slaughterhouse Chimney Ruin	Slaughterhouse Ruin	Site				Y	1, 2, 3, 4, 6* A,B,C,D***	Kalaupapa Leprosy Settlement Historic District, NHL update 2020;* National Park Service Cultural Landscape Inventory Revised 2011***	NPS
Kalawao	Kanakaokai Tomb		Object	56518		P-14	Y	1, 2, 3, 4, 6* A,B,C,D***	Kalaupapa Leprosy Settlement Historic District, NHL update 2020;* National Park Service Cultural Landscape Inventory Revised 2011***	NPS
Kalawao	North of Road Site		Site		2423	Flexner Site 7	Y	1, 2, 3, 4, 6*	Kalaupapa Leprosy Settlement Historic District, NHL update 2020*	NPS
Kalawao	Northwest of St. Philomena Church		Site		2425	Flexner Site 4	Y	1, 2, 3, 4, 6*	Kalaupapa Leprosy Settlement Historic District, NHL update 2020*	NPS

Resource Description	Resource Name	Secondary Name	Resource Type	LCS#	State Site # 50-60-03- ####	Park #	Contributing Resource	Significance Criteria	Source	Management (last updated 2015 OR taken from NHL "secondary name" column)
Kalawao	Old Baldwin Home Gate and Walls		Structure	573984		867	Y	1, 2, 3, 4, 6* A,B,C,D***	Kalaupapa Leprosy Settlement Historic District, NHL update 2020;* National Park Service Cultural Landscape Inventory Revised 2011***	NPS
Kalawao	Pharmacist's Quarters Ruin	Gibson House Ruin	Site	56555		820	Y	1, 2, 3, 4, 6* A,B,C,D***	Kalaupapa Leprosy Settlement Historic District, NHL update 2020;* National Park Service Cultural Landscape Inventory Revised 2011***	NPS
Kalawao	Saint Philomena Sundial		Object	573972		865	Y	1, 2, 3, 4, 6* A,B,C,D***	Kalaupapa Leprosy Settlement Historic District, NHL update 2020;* National Park Service Cultural Landscape Inventory Revised 2011***	NPS
Kalawao	Shed 723		Building			723	N		Kalaupapa Leprosy Settlement Historic District, NHL update 2020*	Private
Kalawao	Shed near Judd Park Pavilion		Building				N		Kalaupapa Leprosy Settlement Historic District, NHL update 2020*	
Kalawao	Siloama Church		Building	21067		710	Y	1, 2, 3, 4, 6* A,B,C,D***	Kalaupapa Leprosy Settlement Historic District, NHL update 2020;* National Park Service Cultural Landscape Inventory Revised 2011***	Partner
Kalawao	Siloama Church Memorial Plaque			56515		824	N		National Park Service Cultural Landscape Inventory Revised 2011***	
Kalawao	Siloama Church Stone Wall		Structure	56605		850	Y	1, 2, 3, 4, 6* A,B,C,D***	Kalaupapa Leprosy Settlement Historic District, NHL update 2020;* National Park Service Cultural Landscape Inventory Revised 2011***	NPS
Kalawao	Siloama Restroom		Building	59992		720	Y	1, 2, 3, 4, 6* A,B,C,D***	Kalaupapa Leprosy Settlement Historic District, NHL update 2020;* National Park Service Cultural Landscape Inventory Revised 2011***	Partner
Kalawao	South of Road Site		Site		2429	Flexner Site 10	Y	1, 2, 3, 4, 6*	Kalaupapa Leprosy Settlement Historic District, NHL update 2020*	NPS
Kalawao	St. Philomena Catholic Church Stone Wall	St. Philomena Church Stone Fence	Structure	56604		849	Y	1, 2, 3, 4, 6* A,B,C,D***	Kalaupapa Leprosy Settlement Historic District, NHL update 2020;* National Park Service Cultural Landscape Inventory Revised 2011***	NPS
Kalawao	St. Philomena Church		Building	21068		711	Y	1, 2, 3, 4, 6* A,B,C,D***	Kalaupapa Leprosy Settlement Historic District, NHL update 2020;* National Park Service Cultural Landscape Inventory Revised 2011***	Partner

Resource Description	Resource Name	Secondary Name	Resource Type	LCS#	State Site # 50-60-03- ####	Park #	Contributing Resource	Significance Criteria	Source	Management (last updated 2015 OR taken from NHL "secondary name" column)
Kalawao	Store Area		Site		2432	Flexner Site 13	Y	1, 2, 3, 4, 6*	Kalaupapa Leprosy Settlement Historic District, NHL update 2020*	NPS
Kalawao	The Hospital		Site		2421	Flexner Site 2	Y	1, 2, 3, 4, 6*	Kalaupapa Leprosy Settlement Historic District, NHL update 2020*	NPS
Kalawao	US Leprosy Investigation Station Ruin	Leprosy Station Ruin, US Leprosarium Hospital Site	Site	21178		802	Y	1, 2, 3, 4, 6* A,B,C,D***	Kalaupapa Leprosy Settlement Historic District, NHL update 2020;* National Park Service Cultural Landscape Inventory Revised 2011***	NPS
McVeigh Home	Boiler Room	Boiler Plant.	Building	56510		22M	Y	1, 2, 3, 4, 6* A,B,C,D***	Kalaupapa Leprosy Settlement Historic District, NHL update 2020;* National Park Service Cultural Landscape Inventory Revised 2011***	NPS
McVeigh Home	Building 502		Building	331233		502M	Y	1, 2, 3, 4, 6* A,B,C,D***	Kalaupapa Leprosy Settlement Historic District, NHL update 2020;* National Park Service Cultural Landscape Inventory Revised 2011***	Private
McVeigh Home	Building 504		Building	331158		504M	Y	1, 2, 3, 4, 6* A,B,C,D***	Kalaupapa Leprosy Settlement Historic District, NHL update 2020;* National Park Service Cultural Landscape Inventory Revised 2011***	Private
McVeigh Home	Carport		Building			72M	N		Kalaupapa Leprosy Settlement Historic District, NHL update 2020*	NPS
McVeigh Home	Ed Kato's Studio		Building	56501		11M	Y	1, 2, 3, 4, 6* A,B,C,D***	Kalaupapa Leprosy Settlement Historic District, NHL update 2020;* National Park Service Cultural Landscape Inventory Revised 2011***	NPS
McVeigh Home	Edwin Lelepali Residence	DOH House – Lelepali.	Building	56542		8M	Y	1, 2, 3, 4, 6* A,B,C,D***	Kalaupapa Leprosy Settlement Historic District, NHL update 2020;* National Park Service Cultural Landscape Inventory Revised 2011***	DOH
McVeigh Home	Elizabeth Kahihikolo Residence	Hayase Residence.	Building	56506		15M	Y	1, 2, 3, 4, 6* A,B,C,D***	Kalaupapa Leprosy Settlement Historic District, NHL update 2020;* National Park Service Cultural Landscape Inventory Revised 2011***	DOH
McVeigh Home	Gaspar Residence	D. Hashimoto	Building	56551		33M	Y	1, 2, 3, 4, 6* A,B,C,D***	Kalaupapa Leprosy Settlement Historic District, NHL update 2020;* National Park Service Cultural Landscape Inventory Revised 2011***	DOH

Resource Description	Resource Name	Secondary Name	Resource Type	LCS#	State Site # 50-60-03- ####	Park #	Contributing Resource	Significance Criteria	Source	Management (last updated 2015 OR taken from NHL "secondary name" column)
McVeigh Home	Gertrude Kaauwai Residence	Frasco Residence.	Building	56547		20M	Y	1, 2, 3, 4, 6* A,B,C,D***	Kalaupapa Leprosy Settlement Historic District, NHL update 2020;* National Park Service Cultural Landscape Inventory Revised 2011***	DOH
McVeigh Home	Hashimoto Residence	DOH House – Hashimoto; DOH House – T. Tanaka.	Building	56550		32M	Y	1, 2, 3, 4, 6* A,B,C,D***	Kalaupapa Leprosy Settlement Historic District, NHL update 2020;* National Park Service Cultural Landscape Inventory Revised 2011***	DOH
McVeigh Home	Kahihikolo Residence	DOH House – Kahihikolo, NPS House – Vacant.	Building	56543		9M	Y	1, 2, 3, 4, 6* A,B,C,D***	Kalaupapa Leprosy Settlement Historic District, NHL update 2020;* National Park Service Cultural Landscape Inventory Revised 2011***	NPS
McVeigh Home	Kahikina Residence	DOH House – Kato, NPS House - Vacant.	Building	56503		5M	Y	1, 2, 3, 4, 6* A,B,C,D***	Kalaupapa Leprosy Settlement Historic District, NHL update 2020;* National Park Service Cultural Landscape Inventory Revised 2011***	NPS
McVeigh Home	Leabata Residence	DOH House – Leabata.	Building	56546		16M	Y	1, 2, 3, 4, 6* A,B,C,D***	Kalaupapa Leprosy Settlement Historic District, NHL update 2020;* National Park Service Cultural Landscape Inventory Revised 2011***	NPS
McVeigh Home	McVeigh Card Room	NPS House – Kaawaloa, NPS House – Lee.	Building	56509		27M	Y	1, 2, 3, 4, 6* A,B,C,D***	Kalaupapa Leprosy Settlement Historic District, NHL update 2020;* National Park Service Cultural Landscape Inventory Revised 2011***	NPS
McVeigh Home	McVeigh Dormitory	Mens' Dormitory; NPS Dormitory	Building	21056		28M	Y	1, 2, 3, 4, 6* A,B,C,D***	Kalaupapa Leprosy Settlement Historic District, NHL update 2020;* National Park Service Cultural Landscape Inventory Revised 2011***	NPS
McVeigh Home	McVeigh Garage		Building	56504		3M	Y	1, 2, 3, 4, 6* A,B,C,D***	Kalaupapa Leprosy Settlement Historic District, NHL update 2020;* National Park Service Cultural Landscape Inventory Revised 2011***	NPS
McVeigh Home	McVeigh Home Building 12	McVeigh Apartments, Ladies' Dormitory, DOH Dormitory.	Building	21053		12M	Y	1, 2, 3, 4, 6* A,B,C,D***	Kalaupapa Leprosy Settlement Historic District, NHL update 2020;* National Park Service Cultural Landscape Inventory Revised 2011***	DOH
McVeigh Home	McVeigh Home Garage		Building	55711		4aM	Y	1, 2, 3, 4, 6* A,B,C,D***	Kalaupapa Leprosy Settlement Historic District, NHL update 2020;* National Park Service Cultural Landscape Inventory Revised 2011***	

Resource Description	Resource Name	Secondary Name	Resource Type	LCS#	State Site # 50-60-03- ####	Park #	Contributing Resource	Significance Criteria	Source	Management (last updated 2015 OR taken from NHL "secondary name" column)
McVeigh Home	McVeigh Home Garage		Building	56554		35M	Y	1, 2, 3, 4, 6* A,B,C,D***	Kalaupapa Leprosy Settlement Historic District, NHL update 2020;* National Park Service Cultural Landscape Inventory Revised 2011***	DOH
McVeigh Home	McVeigh Home Paving and Stone Curbs			56532		843	Y	A,B,C,D***	National Park Service Cultural Landscape Inventory Revised 2011***	
McVeigh Home	McVeigh Home Residence 13	DOH House – Carpenter, DOH House – K. Smith	Building	56507		13M	Y	1, 2, 3, 4, 6* A,B,C,D***	Kalaupapa Leprosy Settlement Historic District, NHL update 2020;* National Park Service Cultural Landscape Inventory Revised 2011***	DOH
McVeigh Home	McVeigh Home Residence 14	Brede Residence.	Building	56545		14M	Y	1, 2, 3, 4, 6* A,B,C,D***	Kalaupapa Leprosy Settlement Historic District, NHL update 2020;* National Park Service Cultural Landscape Inventory Revised 2011***	NPS
McVeigh Home	McVeigh Home Residence 2	NPS House – Whiting, NPS House – E. English.	Building	56505		2M	Y	1, 2, 3, 4, 6* A,B,C,D***	Kalaupapa Leprosy Settlement Historic District, NHL update 2020;* National Park Service Cultural Landscape Inventory Revised 2011***	NPS
McVeigh Home	McVeigh Home Residence 6	DOH House – Lelepali.	Building	56541		6M	Y	1, 2, 3, 4, 6* A,B,C,D***	Kalaupapa Leprosy Settlement Historic District, NHL update 2020;* National Park Service Cultural Landscape Inventory Revised 2011***	NPS
McVeigh Home	McVeigh Home Shed		Building	55712		507M (507 on NPS bldg list)	Y	1, 2, 3, 4, 6* A,B,C,D***	Kalaupapa Leprosy Settlement Historic District, NHL update 2020;* National Park Service Cultural Landscape Inventory Revised 2011***	Private
McVeigh Home	McVeigh Home Wash House	McVeigh Laundry.	Building	55713		18M	Y	1, 2, 3, 4, 6* A,B,C,D***	Kalaupapa Leprosy Settlement Historic District, NHL update 2020;* National Park Service Cultural Landscape Inventory Revised 2011***	NPS
McVeigh Home	McVeigh Home, Kato Workshop		Building	55710		508M (508 on NPS bldg list)	Y	1, 2, 3, 4, 6* A,B,C,D***	Kalaupapa Leprosy Settlement Historic District, NHL update 2020;* National Park Service Cultural Landscape Inventory Revised 2011***	Private
McVeigh Home	McVeigh Pool Hall	McVeigh Pavilion	Building	21055		24M	Y	1, 2, 3, 4, 6* A,B,C,D***	Kalaupapa Leprosy Settlement Historic District, NHL update 2020;* National Park Service Cultural Landscape Inventory Revised 2011***	NPS

Resource Description	Resource Name	Secondary Name	Resource Type	LCS#	State Site # 50-60-03- ####	Park #	Contributing Resource	Significance Criteria	Source	Management (last updated 2015 OR taken from NHL "secondary name" column)
McVeigh Home	McVeigh Social Hall (LCS # 21054, Park # 23M)	McVeigh Home Recreation Hall, McVeigh Rec Hall, McVeigh Dining Hall, McVeigh Kitchen and Dining Hall.	Building	21054		23M	Y	1, 2, 3, 4, 6* A,B,C,D***	Kalaupapa Leprosy Settlement Historic District, NHL update 2020;* National Park Service Cultural Landscape Inventory Revised 2011***	NPS
McVeigh Home	McVeigh Storage Building	McVeigh Home Wash House.	Building	55717		33aM	Y	1, 2, 3, 4, 6* A,B,C,D***	Kalaupapa Leprosy Settlement Historic District, NHL update 2020;* National Park Service Cultural Landscape Inventory Revised 2011***	Private
McVeigh Home	Nahoopii Residence	DOH House – Nahoopii, DOH House – D'Arcy.	Building	56553		34M	Y	1, 2, 3, 4, 6* A,B,C,D***	Kalaupapa Leprosy Settlement Historic District, NHL update 2020;* National Park Service Cultural Landscape Inventory Revised 2011***	DOH
McVeigh Home	Nalaiehua Residence	DOH House – Nalaiehua; DOH House - Mollena.	Building	56549		30M	Y	1, 2, 3, 4, 6* A,B,C,D***	Kalaupapa Leprosy Settlement Historic District, NHL update 2020;* National Park Service Cultural Landscape Inventory Revised 2011***	NPS
McVeigh Home	Nancy and James Brede Residence	DOH House – Brede.	Building	56544		10M	Y	1, 2, 3, 4, 6* A,B,C,D***	Kalaupapa Leprosy Settlement Historic District, NHL update 2020;* National Park Service Cultural Landscape Inventory Revised 2011***	DOH
McVeigh Home	Shed		Building			73M	N		Kalaupapa Leprosy Settlement Historic District, NHL update 2020*	NPS
McVeigh Home	Shed near McVeigh Storage Building	Shed near McVeigh Home Wash House.	Building	56552		33bM	Y	1, 2, 3, 4, 6* A,B,C,D***	Kalaupapa Leprosy Settlement Historic District, NHL update 2020;* National Park Service Cultural Landscape Inventory Revised 2011***	Private
McVeigh Home	Shed/Carport		Building			74M	Y	1, 2, 3, 4, 6*	Kalaupapa Leprosy Settlement Historic District, NHL update 2020*	
McVeigh Home	Stone Foundation east of 22M		Structure			22M	Y	1, 2, 3, 4, 6*	Kalaupapa Leprosy Settlement Historic District, NHL update 2020*	
McVeigh Home	Storage Shed		Building			505M	Y	1, 2, 3, 4, 6*	Kalaupapa Leprosy Settlement Historic District, NHL update 2020*	Private
McVeigh Home	Watanuki Residence	DOH House – Watanuki, NPS House – T. Hooper.	Building	56508		1M	Y	1, 2, 3, 4, 6* A,B,C,D***	Kalaupapa Leprosy Settlement Historic District, NHL update 2020;* National Park Service Cultural Landscape Inventory Revised 2011***	NPS
McVeigh Home	William Kaakimaka Residence	DOH House – Kaakimaka, NPS House – W. Hashimoto; NPS House - Harte.	Building	56548		25M	Y	1, 2, 3, 4, 6* A,B,C,D***	Kalaupapa Leprosy Settlement Historic District, NHL update 2020;* National Park Service Cultural Landscape Inventory Revised 2011***	NPS

Resource Description	Resource Name	Secondary Name	Resource Type	LCS#	State Site # 50-60-03- ####	Park #	Contributing Resource	Significance Criteria	Source	Management (last updated 2015 OR taken from NHL "secondary name" column)
Molokai Light Station	Concrete Footing for Flag Pole		Site				Y	1, 2, 3, 4, 6*	Kalaupapa Leprosy Settlement Historic District, NHL update 2020*	
Molokai Light Station	Concrete Pier Supports for Oil- Drum Loading Dock		Site				Y	1, 2, 3, 4, 6*	Kalaupapa Leprosy Settlement Historic District, NHL update 2020*	
Molokai Light Station	Internal Access Road / Lighthouse Road		Structure	926705			Y	1, 2, 3, 4, 6* A&C**	Kalaupapa Leprosy Settlement Historic District, NHL update 2020; * National Park Service Cultural Landscape Inventory 2012**	NPS
Molokai Light Station	Molokai Light Station Concrete Sidewalk		Structure	926703			Y	1, 2, 3, 4, 6* A&C**	Kalaupapa Leprosy Settlement Historic District, NHL update 2020; * National Park Service Cultural Landscape Inventory 2012**	NPS
Molokai Light Station	Molokai Light Station First Assistant Keeper's Residence		Building	232237		706	Y	1, 2, 3, 4, 6* A&C**	Kalaupapa Leprosy Settlement Historic District, NHL update 2020*	NPS
Molokai Light Station	Molokai Light Station Garage		Building	340719		709	Y	1, 2, 3, 4, 6* A&C**	Kalaupapa Leprosy Settlement Historic District, NHL update 2020; * National Park Service Cultural Landscape Inventory 2012**	NPS
Molokai Light Station	Molokai Light Station Generator Shed		Building	59999		713	Y	1, 2, 3, 4, 6* A&C**	Kalaupapa Leprosy Settlement Historic District, NHL update 2020; * National Park Service Cultural Landscape Inventory 2012**	NPS
Molokai Light Station	Molokai Light Station Lighthouse		Building	21176		715	Y	1, 2, 3, 4, 6* A&C**	Kalaupapa Leprosy Settlement Historic District, NHL update 2020; * National Park Service Cultural Landscape Inventory 2012**	NPS
Molokai Light Station	Molokai Light Station Principal Keeper's Residence	Stone House.	Building	926707		707	Y	1, 2, 3, 4, 6* A&C**	Kalaupapa Leprosy Settlement Historic District, NHL update 2020; * National Park Service Cultural Landscape Inventory 2012**	NPS
Molokai Light Station	Molokai Light Station Stone Perimeter Wall		Structure	926708			Y	1, 2, 3, 4, 6* A&C**	Kalaupapa Leprosy Settlement Historic District, NHL update 2020; * National Park Service Cultural Landscape Inventory 2012**	NPS
Molokai Light Station	Molokai Light Station Storage Vault	Oil Storage Building	Building	21175		714	Y	1, 2, 3, 4, 6* A&C**	Kalaupapa Leprosy Settlement Historic District, NHL update 2020; * National Park Service Cultural Landscape Inventory 2012**	NPS

Resource Description	Resource Name	Secondary Name	Resource Type	LCS#	State Site # 50-60-03- ####	Park #	Contributing Resource	Significance Criteria	Source	Management (last updated 2015 OR taken from NHL "secondary name" column)
Molokai Light Station	Molokai Light Station Wash House /Storage Shed		Building	573542		708	Y	1, 2, 3, 4, 6* A&C**	Kalaupapa Leprosy Settlement Historic District, NHL update 2020;* National Park Service Cultural Landscape Inventory 2012**	NPS
Molokai Light Station	Molokai Light Station Water Tank		Structure	21174		7012	Y	1, 2, 3, 4, 6* A&C**	Kalaupapa Leprosy Settlement Historic District, NHL update 2020*	NPS
Molokai Light Station	Northern Access Road	Historic Pathway/ Road from North	Structure				Y	1, 2, 3, 4, 6*	Kalaupapa Leprosy Settlement Historic District, NHL update 2020*	NPS
Molokai Light Station	Principal Access Road/ Lighthouse Road		Structure	926704			Y	1, 2, 3, 4, 6* A&C**	Kalaupapa Leprosy Settlement Historic District, NHL update 2020;* National Park Service Cultural Landscape Inventory 2012**	NPS
Molokai Light Station	Reinforced Concrete Base for Former Oil Storage Tank		Site				Y	1, 2, 3, 4, 6*	Kalaupapa Leprosy Settlement Historic District, NHL update 2020*	NPS
Molokai Light Station	Wire Perimeter Fence Posts		Structure				Y	1, 2, 3, 4, 6*	Kalaupapa Leprosy Settlement Historic District, NHL update 2020*	NPS
Molokai Light Station		Secondary name: Oil Storage building.	Building				Y	1, 2, 3, 4, 6*	Kalaupapa Leprosy Settlement Historic District, NHL update 2020*	NPS
New Baldwin Home Site	Construction Debris (C&D) Dump		Site				N		Kalaupapa Leprosy Settlement Historic District, NHL update 2020*	NPS
New Baldwin Home Site	Grotto and Garden Structure		Structure	573951		851	Y	1, 2, 3, 4, 6* A,B,C,D***	Kalaupapa Leprosy Settlement Historic District, NHL update 2020;* National Park Service Cultural Landscape Inventory Revised 2011***	NPS
New Baldwin Home Site	Mule Corral		Site				N		Kalaupapa Leprosy Settlement Historic District, NHL update 2020*	
New Baldwin Home Site	Municipal Solid Waste (MSW) Dump		Site				N		Kalaupapa Leprosy Settlement Historic District, NHL update 2020*	
New Baldwin Home Site	New Baldwin Home for Boys Entrance Gate		Structure	56522		840	Y	1, 2, 3, 4, 6* A,B,C,D***	Kalaupapa Leprosy Settlement Historic District, NHL update 2020;* National Park Service Cultural Landscape Inventory Revised 2011***	NPS
New Baldwin Home Site	Pig Sty at New Baldwin Home		Site	373536		852	Y	1, 2, 3, 4, 6*	Kalaupapa Leprosy Settlement Historic District, NHL update 2020*	
New Baldwin Home Site	Rock Crusher		Structure	59998		635	Y	1, 2, 3, 4, 6* A,B,C,D***	Kalaupapa Leprosy Settlement Historic District, NHL update 2020;* National Park Service Cultural Landscape Inventory Revised 2011***	NPS

Resource Description	Resource Name	Secondary Name	Resource Type	LCS#	State Site # 50-60-03- ####	Park #	Contributing Resource	Significance Criteria	Source	Management (last updated 2015 OR taken from NHL "secondary name" column)
New Baldwin Home Site	Slaughterhouse		Building	59997		630	Y	1, 2, 3, 4, 6* A,B,C,D***	Kalaupapa Leprosy Settlement Historic District, NHL update 2020;* National Park Service Cultural Landscape Inventory Revised 2011***	NPS
New Baldwin Home Site	Slaughterhouse Restrooms		Building	59996		258	Y	1, 2, 3, 4, 6* A,B,C,D***	Kalaupapa Leprosy Settlement Historic District, NHL update 2020;* National Park Service Cultural Landscape Inventory Revised 2011***	NPS
Other resources located outside the twelve neighborhoods/ developed areas described in Part Two:	Ambrose Hutchison House Area	Hutchison's	Site		2426	Flexner Site 6	Y	1, 2, 3, 4, 6*	Kalaupapa Leprosy Settlement Historic District, NHL update 2020*	NPS
Other resources located outside the twelve neighborhoods/ developed areas described in Part Two:	Cemetery N – Kauhakō Crater		Site				Y	1, 2, 3, 4, 6* A,B,C,D***	Kalaupapa Leprosy Settlement Historic District, NHL update 2020;* National Park Service Cultural Landscape Inventory Revised 2011***	NPS
Other resources located outside the twelve neighborhoods/ developed areas described in Part Two:	Cemetery O – Kahaloko Cemetery		Site				Y	1, 2, 3, 4, 6* A,B,C,D***	Kalaupapa Leprosy Settlement Historic District, NHL update 2020;* National Park Service Cultural Landscape Inventory Revised 2011***	NPS
Other resources located outside the twelve neighborhoods/ developed areas described in Part Two:	Cemetery V – Miscellaneous		Site				Y	1, 2, 3, 4, 6*	Kalaupapa Leprosy Settlement Historic District, NHL update 2020*	NPS
Other resources located outside the twelve neighborhoods/ developed areas described in Part Two:	Kauhakō Crater Cross		Object	56602		847	Y	1, 2, 3, 4, 6* A,B,C,D***	Kalaupapa Leprosy Settlement Historic District, NHL update 2020;* National Park Service Cultural Landscape Inventory Revised 2011***	NPS
Other resources located outside the twelve neighborhoods/ developed areas described in Part Two:	Kaupikiawa Rock House		Site	21182	1960	806	Y	1, 2, 3, 4, 6* A,B,C,D***	Kalaupapa Leprosy Settlement Historic District, NHL update 2020;* National Park Service Cultural Landscape Inventory Revised 2011***	NPS
Other resources located outside the twelve neighborhoods/ developed areas described in Part Two:	Livestock Fencing, Cattle Chutes, and Cattle Guards		Site				Y	1, 2, 3, 4, 6*	Kalaupapa Leprosy Settlement Historic District, NHL update 2020*	NPS
Other resources located outside the twelve neighborhoods/ developed areas described in Part Two:	The Church of Jesus Christ of Latter Day Saints Church Beach House Steps	Old The Church of Jesus Christ of Latter Day Saints Church House, The Church of Jesus Christ of Latter Day Saints Church Stairs	Site	21181		815	Y	1, 2, 3, 4, 6* A,B,C,D***	Kalaupapa Leprosy Settlement Historic District, NHL update 2020;* National Park Service Cultural Landscape Inventory Revised 2011***	NPS
Other resources located outside the twelve neighborhoods/ developed areas described in Part Two:	Richard Marks Beach House	East Coast Fishing Shack, Rea's Beach House	Building	573955		856	Y	1, 2, 3, 4, 6* A,B,C,D***	Kalaupapa Leprosy Settlement Historic District, NHL update 2020;* National Park Service Cultural Landscape Inventory Revised 2011***	Private

Resource Description	Resource Name	Secondary Name	Resource Type	LCS#	State Site # 50-60-03- ####	Park #	Contributing Resource	Significance Criteria	Source	Management (last updated 2015 OR taken from NHL "secondary name" column)
Other resources located outside the twelve neighborhoods/ developed areas described in Part Two:	Richard Marks Beach House Outhouse		Building	573956		857	N		Kalaupapa Leprosy Settlement Historic District, NHL update 2020*	Private
Other resources located outside the twelve neighborhoods/ developed areas described in Part Two:	Tsunami Evacuation Site		Site				N		Kalaupapa Leprosy Settlement Historic District, NHL update 2020*	
Residential Area	AJA Benevolent Society Hall	AJA Hall, Buddhist Temple	Building	21066		308	Y	1, 2, 3, 4, 6* A,B,C,D***	Kalaupapa Leprosy Settlement Historic District, NHL update 2020;* National Park Service Cultural Landscape Inventory Revised 2011***	NPS
Residential Area	AJA Outbuilding	AJA Benevolent Society Storage Building	Building	22637		309	Y	1, 2, 3, 4, 6* A,B,C,D***	Kalaupapa Leprosy Settlement Historic District, NHL update 2020;* National Park Service Cultural Landscape Inventory Revised 2011***	NPS
Residential Area	Anita Una Residence	Duarte Residence, DOH House – L. Linker	Building	55700		159-62	Y	1, 2, 3, 4, 6* A,B,C,D***	Kalaupapa Leprosy Settlement Historic District, NHL update 2020;* National Park Service Cultural Landscape Inventory Revised 2011***	DOH
Residential Area	Baldwin Street Garage		Building	55771		588	Y	1, 2, 3, 4, 6* A,B,C,D***	Kalaupapa Leprosy Settlement Historic District, NHL update 2020;* National Park Service Cultural Landscape Inventory Revised 2011***	Private
Residential Area	Baldwin Street Garage		Building	55819		593	Y	1, 2, 3, 4, 6* A,B,C,D***	Kalaupapa Leprosy Settlement Historic District, NHL update 2020;* National Park Service Cultural Landscape Inventory Revised 2011***	Private
Residential Area	Baldwin Street Residence 182-62	NPS House – P. Lee-Namakaeha, NPS House – R. Mahial	Building	55770		182-62	Y	1, 2, 3, 4, 6* A,B,C,D***	Kalaupapa Leprosy Settlement Historic District, NHL update 2020;* National Park Service Cultural Landscape Inventory Revised 2011***	NPS
Residential Area	Bernard Punikai'a Residence	Alice Kamaka Residence, Ka 'Ohana O Kalaupapa House	Building	59962		155	Y	1, 2, 3, 4, 6* A,B,C,D***	Kalaupapa Leprosy Settlement Historic District, NHL update 2020;* National Park Service Cultural Landscape Inventory Revised 2011***	DOH
Residential Area	Bishop Street Garage 621	Harada Garage	Building	55738		621	Y	1, 2, 3, 4, 6* A,B,C,D***	Kalaupapa Leprosy Settlement Historic District, NHL update 2020;* National Park Service Cultural Landscape Inventory Revised 2011***	Private

Resource Description	Resource Name	Secondary Name	Resource Type	LCS#	State Site # 50-60-03- ####	Park #	Contributing Resource	Significance Criteria	Source	Management (last updated 2015 OR taken from NHL "secondary name" column)
Residential Area	Bishop Street Garage 622	Arruda's Garage	Building	55740		622	Y	1, 2, 3, 4, 6* A,B,C,D***	Kalaupapa Leprosy Settlement Historic District, NHL update 2020;* National Park Service Cultural Landscape Inventory Revised 2011***	Private
Residential Area	Bottle House: Richard Marks		Building	1073391		187A	Y	1, 2, 3, 4, 6* A,B,C,D***	Kalaupapa Leprosy Settlement Historic District, NHL update 2020;* National Park Service Cultural Landscape Inventory Revised 2011***	Private
Residential Area	Cabane Residence	NPS House – L. Namakaeha.	Building	22639		119-60	Y	1, 2, 3, 4, 6* A,B,C,D***	Kalaupapa Leprosy Settlement Historic District, NHL update 2020;* National Park Service Cultural Landscape Inventory Revised 2011***	NPS
Residential Area	Carport: Richard Marks		Building	573904		187B	Y	1, 2, 3, 4, 6*	Kalaupapa Leprosy Settlement Historic District, NHL update 2020*	Private
Residential Area	Cathrine Puahala Residence	DOH House – G. Naeole.	Building	55663		107-56	Y	1, 2, 3, 4, 6* A,B,C,D***	Kalaupapa Leprosy Settlement Historic District, NHL update 2020;* National Park Service Cultural Landscape Inventory Revised 2011***	DOH
Residential Area	Clarence and Ivy Kahilihiwa Residence		Building	55662		160-62	Y	1, 2, 3, 4, 6* A,B,C,D***	Kalaupapa Leprosy Settlement Historic District, NHL update 2020;* National Park Service Cultural Landscape Inventory Revised 2011***	DOH
Residential Area	Clarence Naia Residence	DOH House – Naia, DOH House – M. Jordan	Building	22630		114	Y	1, 2, 3, 4, 6* A,B,C,D***	Kalaupapa Leprosy Settlement Historic District, NHL update 2020;* National Park Service Cultural Landscape Inventory Revised 2011***	DOH
Residential Area	Damien Road Carport	Damien Road Garage	Building	55707		557	N		Kalaupapa Leprosy Settlement Historic District, NHL update 2020* National Park Service Cultural Landscape Inventory Revised 2011***	DOH
Residential Area	Damien Road Carport		Building	573523		532	N		Kalaupapa Leprosy Settlement Historic District, NHL update 2020* National Park Service Cultural Landscape Inventory Revised 2011***	Private
Residential Area	Damien Road Carport Tool Shed		Building	573908		532a	N		Kalaupapa Leprosy Settlement Historic District, NHL update 2020*	Private
Residential Area	Damien Road Garage 531		Building	55664		531	N		Kalaupapa Leprosy Settlement Historic District, NHL update 2020* National Park Service Cultural Landscape Inventory Revised 2011***	Private

Resource Description	Resource Name	Secondary Name	Resource Type	LCS#	State Site # 50-60-03- ####	Park #	Contributing Resource	Significance Criteria	Source	Management (last updated 2015 OR taken from NHL "secondary name" column)
Residential Area	Damien Road Garage 547			55702			Y	A,B,C,D***	National Park Service Cultural Landscape Inventory Revised 2011***	
Residential Area	Damien Road Residence 110-64	DOH House – M. Naone, DOH House – I. Angel.	Building	55697		110-64	Y	1, 2, 3, 4, 6* A,B,C,D***	Kalaupapa Leprosy Settlement Historic District, NHL update 2020;* National Park Service Cultural Landscape Inventory Revised 2011***	DOH
Residential Area	Damien Road Residence 111-56	Guest Cottage #1.	Building	55698		111-56	Y	1, 2, 3, 4, 6* A,B,C,D***	Kalaupapa Leprosy Settlement Historic District, NHL update 2020;* National Park Service Cultural Landscape Inventory Revised 2011***	DOH
Residential Area	Damien Road Residence 112-56	DOH House – J. Cuello.	Building	55699		112-56	Y	1, 2, 3, 4, 6* A,B,C,D***	Kalaupapa Leprosy Settlement Historic District, NHL update 2020;* National Park Service Cultural Landscape Inventory Revised 2011***	DOH
Residential Area	Damien Road Residence 26	NPS House – Borgmeyer, NPS House – T. Trainer, NPS House – J. Kaiama	Building	59952		26	Y	1, 2, 3, 4, 6* A,B,C,D***	Kalaupapa Leprosy Settlement Historic District, NHL update 2020;* National Park Service Cultural Landscape Inventory Revised 2011***	NPS
Residential Area	Elaine Remigio Residence	DOH House – A. Cuello	Building	59958		116	Y	1, 2, 3, 4, 6* A,B,C,D***	Kalaupapa Leprosy Settlement Historic District, NHL update 2020;* National Park Service Cultural Landscape Inventory Revised 2011***	DOH
Residential Area	Elizabeth Bell Residence	Ku'ulei Bell Residence, DOH House – Bell, DOH House – T. Richmond.	Building	59968		189	Y	1, 2, 3, 4, 6* A,B,C,D***	Kalaupapa Leprosy Settlement Historic District, NHL update 2020;* National Park Service Cultural Landscape Inventory Revised 2011***	DOH
Residential Area	Garage		Building	573560		585	Y	1, 2, 3, 4, 6* A,B,C,D***	Kalaupapa Leprosy Settlement Historic District, NHL update 2020;* National Park Service Cultural Landscape Inventory Revised 2011***	Private
Residential Area	Garage		Building	573911		566	Y	1, 2, 3, 4, 6*	Kalaupapa Leprosy Settlement Historic District, NHL update 2020*	Private
Residential Area	Garage		Building	573919		620	N		Kalaupapa Leprosy Settlement Historic District, NHL update 2020* National Park Service Cultural Landscape Inventory Revised 2011***	Private
Residential Area	Garage 533		Building	55665		533	N		Kalaupapa Leprosy Settlement Historic District, NHL update 2020* National Park Service Cultural Landscape Inventory Revised 2011***	Private

Resource Description	Resource Name	Secondary Name	Resource Type	LCS#	State Site # 50-60-03- ####	Park #	Contributing Resource	Significance Criteria	Source	Management (last updated 2015 OR taken from NHL "secondary name" column)
Residential Area	Garage near John Arruda Residence		Building				N		Kalaupapa Leprosy Settlement Historic District, NHL update 2020*	
Residential Area	Gloria Marks Residence	Kaliko Residence.	Building	55782		186-64	Y	1, 2, 3, 4, 6* A,B,C,D***	Kalaupapa Leprosy Settlement Historic District, NHL update 2020;* National Park Service Cultural Landscape Inventory Revised 2011***	DOH
Residential Area	Goodhue Street Garage 609		Building	55808		609	Y	1, 2, 3, 4, 6* A,B,C,D***	Kalaupapa Leprosy Settlement Historic District, NHL update 2020;* National Park Service Cultural Landscape Inventory Revised 2011***	Private
Residential Area	Goodhue Street Garage 613		Building	55805		613	Y	1, 2, 3, 4, 6* A,B,C,D***	Kalaupapa Leprosy Settlement Historic District, NHL update 2020;* National Park Service Cultural Landscape Inventory Revised 2011***	Private
Residential Area	Goodhue Street Garage 614		Building	55803		614	N		Kalaupapa Leprosy Settlement Historic District, NHL update 2020* National Park Service Cultural Landscape Inventory Revised 2011***	Private
Residential Area	Goodhue Street Shed		Building	55806		605	Y	1, 2, 3, 4, 6* A,B,C,D***	Kalaupapa Leprosy Settlement Historic District, NHL update 2020;* National Park Service Cultural Landscape Inventory Revised 2011***	NPS
Residential Area	Goodhue Street Shed 605	Game Room, Poker Room, Sagadraca Poker Room	Building	55807		605	Y	1, 2, 3, 4, 6* A,B,C,D***	Kalaupapa Leprosy Settlement Historic District, NHL update 2020;* National Park Service Cultural Landscape Inventory Revised 2011***	NPS
Residential Area	Guest House, Ramos	Nicky's Wash House	Building	573913		591	Y	1, 2, 3, 4, 6* A,B,C,D***	Kalaupapa Leprosy Settlement Historic District, NHL update 2020;* National Park Service Cultural Landscape Inventory Revised 2011***	Private
Residential Area	Haleakalā Street Garage 587		Building	55773		587	Y	1, 2, 3, 4, 6* A,B,C,D***	Kalaupapa Leprosy Settlement Historic District, NHL update 2020;* National Park Service Cultural Landscape Inventory Revised 2011***	Private
Residential Area	Henry Nalaeiua Residence	Uncle Henry's House	Building	59964		157	Y	1, 2, 3, 4, 6* A,B,C,D***	Kalaupapa Leprosy Settlement Historic District, NHL update 2020;* National Park Service Cultural Landscape Inventory Revised 2011***	NPS

Resource Description	Resource Name	Secondary Name	Resource Type	LCS#	State Site # 50-60-03- ####	Park #	Contributing Resource	Significance Criteria	Source	Management (last updated 2015 OR taken from NHL "secondary name" column)
Residential Area	John Arruda Residence		Building	55802		121-64	Y	1, 2, 3, 4, 6* A,B,C,D***	Kalaupapa Leprosy Settlement Historic District, NHL update 2020;* National Park Service Cultural Landscape Inventory Revised 2011***	DOH
Residential Area	Ka'iulani Street Building 569	Garden House.	Building	102323		569	Y	1, 2, 3, 4, 6* A,B,C,D***	Kalaupapa Leprosy Settlement Historic District, NHL update 2020;* National Park Service Cultural Landscape Inventory Revised 2011***	Private
Residential Area	Ka'iulani Street Garage		Building	344990		568	Y	1, 2, 3, 4, 6* A,B,C,D***	Kalaupapa Leprosy Settlement Historic District, NHL update 2020;* National Park Service Cultural Landscape Inventory Revised 2011***	Private
Residential Area	Ka'iulani Street Garage 563		Building	55817		563	Y	1, 2, 3, 4, 6* A,B,C,D***	Kalaupapa Leprosy Settlement Historic District, NHL update 2020;* National Park Service Cultural Landscape Inventory Revised 2011***	Private
Residential Area	Ka'iulani Street Garage 564		Building	55783		564	Y	1, 2, 3, 4, 6* A,B,C,D***	Kalaupapa Leprosy Settlement Historic District, NHL update 2020;* National Park Service Cultural Landscape Inventory Revised 2011***	n/a
Residential Area	Ka'iulani Street Garage 570		Building	55815		570	Y	1, 2, 3, 4, 6* A,B,C,D***	Kalaupapa Leprosy Settlement Historic District, NHL update 2020;* National Park Service Cultural Landscape Inventory Revised 2011***	Private
Residential Area	Ka'iulani Street Garage 571		Building	55779		571	Y	1, 2, 3, 4, 6* A,B,C,D***	Kalaupapa Leprosy Settlement Historic District, NHL update 2020;* National Park Service Cultural Landscape Inventory Revised 2011***	Private
Residential Area	Ka'iulani Street Shed 573		Building	55778		573	Y	1, 2, 3, 4, 6* A,B,C,D***	Kalaupapa Leprosy Settlement Historic District, NHL update 2020;* National Park Service Cultural Landscape Inventory Revised 2011***	Private
Residential Area	Ka'iulani Street Storage Shed		Building	344095		572	Y	1, 2, 3, 4, 6* A,B,C,D***	Kalaupapa Leprosy Settlement Historic District, NHL update 2020;* National Park Service Cultural Landscape Inventory Revised 2011***	Private
Residential Area	Kaiulani Street Residence 65R-190					1-65R 190	Y	A,B,C,D***	National Park Service Cultural Landscape Inventory Revised 2011***	

Resource Description	Resource Name	Secondary Name	Resource Type	LCS#	State Site # 50-60-03- ####	Park #	Contributing Resource	Significance Criteria	Source	Management (last updated 2015 OR taken from NHL "secondary name" column)
Residential Area	Kapi'olani Residence	DOH House – Chow	Building	59967		185-71	Y	1, 2, 3, 4, 6* A,B,C,D***	Kalaupapa Leprosy Settlement Historic District, NHL update 2020;* National Park Service Cultural Landscape Inventory Revised 2011***	DOH
Residential Area	Kapi'olani Street Residence 199	NPS House – J. Cerny, NPS House – E. Espaniola.	Building	55704		199	Y	1, 2, 3, 4, 6* A,B,C,D***	Kalaupapa Leprosy Settlement Historic District, NHL update 2020;* National Park Service Cultural Landscape Inventory Revised 2011***	NPS
Residential Area	Katherine Costales Residence		Building	55775		178-56	Y	1, 2, 3, 4, 6* A,B,C,D***	Kalaupapa Leprosy Settlement Historic District, NHL update 2020;* National Park Service Cultural Landscape Inventory Revised 2011***	DOH
Residential Area	Lourdes Taghoy Residence	DOH House – C. Cappelle, NPS House – E. Brown	Building	55769		153-56	Y	1, 2, 3, 4, 6* A,B,C,D***	Kalaupapa Leprosy Settlement Historic District, NHL update 2020;* National Park Service Cultural Landscape Inventory Revised 2011***	NPS
Residential Area	Lucy Kaona Residence	DOH House – M. Macloves	Building	55810		156-56	Y	1, 2, 3, 4, 6* A,B,C,D***	Kalaupapa Leprosy Settlement Historic District, NHL update 2020;* National Park Service Cultural Landscape Inventory Revised 2011***	DOH
Residential Area	Mamuad Residence	DOH House – Mamuad, Community Thrift Store	Building	59965		161	Y	1, 2, 3, 4, 6* A,B,C,D***	Kalaupapa Leprosy Settlement Historic District, NHL update 2020;* National Park Service Cultural Landscape Inventory Revised 2011***	DOH
Residential Area	McKinley Street Building 592		Building	101950		592	Y	1, 2, 3, 4, 6* A,B,C,D***	Kalaupapa Leprosy Settlement Historic District, NHL update 2020;* National Park Service Cultural Landscape Inventory Revised 2011***	Private
Residential Area	McKinley Street Residence 123-62	DOH House – Naeole	Building	55801		123-62	Y	1, 2, 3, 4, 6* A,B,C,D***	Kalaupapa Leprosy Settlement Historic District, NHL update 2020;* National Park Service Cultural Landscape Inventory Revised 2011***	DOH
Residential Area	McKinley Street Residence 154	NPS House – Pu, NPS House – L. Delos-Reyes	Building	59961		154	Y	1, 2, 3, 4, 6* A,B,C,D***	Kalaupapa Leprosy Settlement Historic District, NHL update 2020;* National Park Service Cultural Landscape Inventory Revised 2011***	NPS
Residential Area	Meli and Randall Watanuki Residence		Building	55695		108-56	Y	1, 2, 3, 4, 6* A,B,C,D***	Kalaupapa Leprosy Settlement Historic District, NHL update 2020;* National Park Service Cultural Landscape Inventory Revised 2011***	DOH

Resource Description	Resource Name	Secondary Name	Resource Type	LCS#	State Site # 50-60-03- ####	Park #	Contributing Resource	Significance Criteria	Source	Management (last updated 2015 OR taken from NHL "secondary name" column)
Residential Area	Mother Clinton Monument		Object	56517		838	Y	1, 2, 3, 4, 6* A,B,C,D***	Kalaupapa Leprosy Settlement Historic District, NHL update 2020;* National Park Service Cultural Landscape Inventory Revised 2011***	NPS
Residential Area	Nakanishi Residence	NPS House – Ranger Residence; NPS House – D. Romes	Building	55701		311-64	Y	1, 2, 3, 4, 6* A,B,C,D***	Kalaupapa Leprosy Settlement Historic District, NHL update 2020;* National Park Service Cultural Landscape Inventory Revised 2011***	NPS
Residential Area	Nakoa Residence	DOH House – Benjamin, “Banyan Tree,” DOH House – K. Flores	Building	59966		181	Y	1, 2, 3, 4, 6* A,B,C,D***	Kalaupapa Leprosy Settlement Historic District, NHL update 2020;* National Park Service Cultural Landscape Inventory Revised 2011***	DOH
Residential Area	Nellie McCarthy Residence	DOH House – B. Chang	Building	55776		173-56	Y	1, 2, 3, 4, 6* A,B,C,D***	Kalaupapa Leprosy Settlement Historic District, NHL update 2020;* National Park Service Cultural Landscape Inventory Revised 2011***	DOH
Residential Area	Nicky Ramos ResidenceE	DOH House – Ramos, NPS House – L Kaaihue	Building	59959		151	Y	1, 2, 3, 4, 6* A,B,C,D***	Kalaupapa Leprosy Settlement Historic District, NHL update 2020;* National Park Service Cultural Landscape Inventory Revised 2011***	NPS
Residential Area	Nono Residence	DOH House – Nono	Building	59957		115	Y	1, 2, 3, 4, 6* A,B,C,D***	Kalaupapa Leprosy Settlement Historic District, NHL update 2020;* National Park Service Cultural Landscape Inventory Revised 2011***	NPS
Residential Area	Olivia Breitha Residence		Building	55639		101-62	Y	1, 2, 3, 4, 6* A,B,C,D***	Kalaupapa Leprosy Settlement Historic District, NHL update 2020;* National Park Service Cultural Landscape Inventory Revised 2011***	DOH
Residential Area	Paul and Winifred Harada Residence		Building	56609		122-62	Y	1, 2, 3, 4, 6* A,B,C,D***	Kalaupapa Leprosy Settlement Historic District, NHL update 2020;* National Park Service Cultural Landscape Inventory Revised 2011***	DOH
Residential Area	Plant Nursery	Native Plant Nursery, Community Garden. West Coast Cemeteries	Site				N		Kalaupapa Leprosy Settlement Historic District, NHL update 2020*	
Residential Area	Puahi Street Garage	Kenso’s Garage.	Building	56538		516	Y	1, 2, 3, 4, 6* A,B,C,D***	Kalaupapa Leprosy Settlement Historic District, NHL update 2020;* National Park Service Cultural Landscape Inventory Revised 2011***	NPS

Resource Description	Resource Name	Secondary Name	Resource Type	LCS#	State Site # 50-60-03- ####	Park #	Contributing Resource	Significance Criteria	Source	Management (last updated 2015 OR taken from NHL "secondary name" column)
Residential Area	Puahi Street Garage 515		Building	55643		515	Y	1, 2, 3, 4, 6* A,B,C,D***	Kalaupapa Leprosy Settlement Historic District, NHL update 2020;* National Park Service Cultural Landscape Inventory Revised 2011***	Private
Residential Area	Puahi Street Hothouse		Building	55642		521	Y	1, 2, 3, 4, 6* A,B,C,D***	Kalaupapa Leprosy Settlement Historic District, NHL update 2020;* National Park Service Cultural Landscape Inventory Revised 2011***	Private
Residential Area	Puahi Street Residence 103-64	(Costales) Loretta Zahner Residence, DOH House – P. Bicoy.	Building	55640		103-64	Y	1, 2, 3, 4, 6* A,B,C,D***	Kalaupapa Leprosy Settlement Historic District, NHL update 2020;* National Park Service Cultural Landscape Inventory Revised 2011***	DOH
Residential Area	Puahi Street Storage Building 520		Building	55641		520	Y	1, 2, 3, 4, 6* A,B,C,D***	Kalaupapa Leprosy Settlement Historic District, NHL update 2020;* National Park Service Cultural Landscape Inventory Revised 2011***	Private
Residential Area	Punikai'a Residence		Building	59960		152	Y	1, 2, 3, 4, 6* A,B,C,D***	Kalaupapa Leprosy Settlement Historic District, NHL update 2020;* National Park Service Cultural Landscape Inventory Revised 2011***	DOH
Residential Area	Rea Residence	NPS House – S. Prokop, NPS House – K. McGuire	Building	55777		172-56	Y	1, 2, 3, 4, 6* A,B,C,D***	Kalaupapa Leprosy Settlement Historic District, NHL update 2020;* National Park Service Cultural Landscape Inventory Revised 2011***	NPS
Residential Area	Residential Area Outbuilding Ruins		Site				Y	1, 2, 3, 4, 6*	Kalaupapa Leprosy Settlement Historic District, NHL update 2020*	NPS
Residential Area	Residential Area Rock Walls		Structure			589	Y	1, 2, 3, 4, 6*	Kalaupapa Leprosy Settlement Historic District, NHL update 2020*	NPS
Residential Area	Residential Area Sidewalks		Structure	573968		863	Y	1, 2, 3, 4, 6* A,B,C,D***	Kalaupapa Leprosy Settlement Historic District, NHL update 2020;* National Park Service Cultural Landscape Inventory Revised 2011***	NPS/DOH
Residential Area	Residential Area Stone Walls			573958		859	Y	A,B,C,D***	National Park Service Cultural Landscape Inventory Revised 2011***	
Residential Area	Richard Marks Residence		Building	55780		187-64	Y	1, 2, 3, 4, 6* A,B,C,D***	Kalaupapa Leprosy Settlement Historic District, NHL update 2020;* National Park Service Cultural Landscape Inventory Revised 2011***	Private

Resource Description	Resource Name	Secondary Name	Resource Type	LCS#	State Site # 50-60-03- ####	Park #	Contributing Resource	Significance Criteria	Source	Management (last updated 2015 OR taken from NHL "secondary name" column)
Residential Area	Richard Purple Residence	DOH House – L. Anamagi.	Building	55644		105-62	Y	1, 2, 3, 4, 6* A,B,C,D***	Kalaupapa Leprosy Settlement Historic District, NHL update 2020;* National Park Service Cultural Landscape Inventory Revised 2011***	DOH
Residential Area	Sagadraca Residence	NPS House – R. Fea-Key	Building	55804		117-62	Y	1, 2, 3, 4, 6* A,B,C,D***	Kalaupapa Leprosy Settlement Historic District, NHL update 2020;* National Park Service Cultural Landscape Inventory Revised 2011***	NPS
Residential Area	Sebastiana Fernandez Residence		Building	59970		192	Y	1, 2, 3, 4, 6* A,B,C,D***	Kalaupapa Leprosy Settlement Historic District, NHL update 2020;* National Park Service Cultural Landscape Inventory Revised 2011***	DOH
Residential Area	Seki Residence	Kenso Seki Residence, Kenso Residence, Seki Puahi Street Residence, Kenso's House, DOH House – Kenso.	Building	22632		281	Y	1, 2, 3, 4, 6* A,B,C,D***	Kalaupapa Leprosy Settlement Historic District, NHL update 2020;* National Park Service Cultural Landscape Inventory Revised 2011***	NPS
Residential Area	Shed		Building			547a	Y	1, 2, 3, 4, 6*	Kalaupapa Leprosy Settlement Historic District, NHL update 2020*	Private
Residential Area	Shed 590		Building	55814		590	N		Kalaupapa Leprosy Settlement Historic District, NHL update 2020* National Park Service Cultural Landscape Inventory Revised 2011***	Private
Residential Area	Soria Residence	“Mango Tree,” DOH House – Soria, NPS House – D. Ainoa.	Building	59969		190-66	Y	1, 2, 3, 4, 6* A,B,C,D***	Kalaupapa Leprosy Settlement Historic District, NHL update 2020;* National Park Service Cultural Landscape Inventory Revised 2011***	NPS
Residential Area	Storage Shed		Building	573912		574a	Y	1, 2, 3, 4, 6* A,B,C,D***	Kalaupapa Leprosy Settlement Historic District, NHL update 2020;* National Park Service Cultural Landscape Inventory Revised 2011***	Private
Residential Area	Storage Shed/ CarporT		Building	338619		612	Y	1, 2, 3, 4, 6* A,B,C,D***	Kalaupapa Leprosy Settlement Historic District, NHL update 2020;* National Park Service Cultural Landscape Inventory Revised 2011***	Private
Residential Area	Yamamoto Residence	NPS House – A. Ainoa	Building	55739		120-62	Y	1, 2, 3, 4, 6* A,B,C,D***	Kalaupapa Leprosy Settlement Historic District, NHL update 2020;* National Park Service Cultural Landscape Inventory Revised 2011***	NPS

Resource Description	Resource Name	Secondary Name	Resource Type	LCS#	State Site # 50-60-03- ####	Park #	Contributing Resource	Significance Criteria	Source	Management (last updated 2015 OR taken from NHL "secondary name" column)
Residential Area	Yonemori Residence	Guest Cottage #2	Building	55772		179-62	Y	1, 2, 3, 4, 6* A,B,C,D***	Kalaupapa Leprosy Settlement Historic District, NHL update 2020;* National Park Service Cultural Landscape Inventory Revised 2011***	DOH
Staff Row	Assistant Resident Physician's Residence	DOH Housing, Doctor's House, Resident Physician's House.	Building	21060		14SR	Y	1, 2, 3, 4, 6* A,B,C,D***	Kalaupapa Leprosy Settlement Historic District, NHL update 2020;* National Park Service Cultural Landscape Inventory Revised 2011***	DOH
Staff Row	Building 629		Building	333513		629SR	Y	1, 2, 3, 4, 6* A,B,C,D***	Kalaupapa Leprosy Settlement Historic District, NHL update 2020;* National Park Service Cultural Landscape Inventory Revised 2011***	DOH
Staff Row	Carport 618SR			329385		618SR	Y	A,B,C,D***	National Park Service Cultural Landscape Inventory Revised 2011***	
Staff Row	Dentist's Residence (LCS # 21058, Park # 8SR)	Guest Quarters, Volunteer Housing, NPS House – Transient.	Building	21058		8SR	Y	1, 2, 3, 4, 6* A,B,C,D***	Kalaupapa Leprosy Settlement Historic District, NHL update 2020;* National Park Service Cultural Landscape Inventory Revised 2011***	NPS
Staff Row	Electrician's Residence	DOH House – Decosta, DOH House - Crivello.	Building	59995		16SR	Y	1, 2, 3, 4, 6* A,B,C,D***	Kalaupapa Leprosy Settlement Historic District, NHL update 2020;* National Park Service Cultural Landscape Inventory Revised 2011***	DOH
Staff Row	Guest Cottage (LCS # 56540, Park # 1aSR)	Secondary names: Guest Cottage, Visitors' Quarters, Veterans' Quarters.	Building	56540		1aSR	Y	1, 2, 3, 4, 6* A,B,C,D***	Kalaupapa Leprosy Settlement Historic District, NHL update 2020;* National Park Service Cultural Landscape Inventory Revised 2011***	DOH
Staff Row	Laundry Room and Apartment		Building	329371		3SR	Y	1, 2, 3, 4, 6* A,B,C,D***	Kalaupapa Leprosy Settlement Historic District, NHL update 2020;* National Park Service Cultural Landscape Inventory Revised 2011***	DOH
Staff Row	Residence for Single Women (LCS # 22627, Park # 1SR)	Nurse's Quarters, Staff Row Dorm, DOH Staff Housing, DOH House – Nurses, NPS Female Dormitory.	Building	22627		1SR	Y	1, 2, 3, 4, 6* A,B,C,D***	Kalaupapa Leprosy Settlement Historic District, NHL update 2020;* National Park Service Cultural Landscape Inventory Revised 2011***	NPS/DOH
Staff Row	Resident Physician's Residence	Doctor's Residence, Administrator's House, Volunteer Housing, DOH House – Schwind, NPS House – Transient.	Building	21059		10SR	Y	1, 2, 3, 4, 6* A,B,C,D***	Kalaupapa Leprosy Settlement Historic District, NHL update 2020;* National Park Service Cultural Landscape Inventory Revised 2011***	NPS

Resource Description	Resource Name	Secondary Name	Resource Type	LCS#	State Site # 50-60-03- ####	Park #	Contributing Resource	Significance Criteria	Source	Management (last updated 2015 OR taken from NHL "secondary name" column)
Staff Row	Staff Row Picket Fence Footing and Gate Posts		Structure	793339		869 and 870	Y	1, 2, 3, 4, 6* A,B,C,D***	Kalaupapa Leprosy Settlement Historic District, NHL update 2020;* National Park Service Cultural Landscape Inventory Revised 2011***	NPS
Staff Row	Superintendent's Residence	DOH Kitchen, DOH Central Kitchen, State Kitchen.	Building	21057		5SR	Y	1, 2, 3, 4, 6* A,B,C,D***	Kalaupapa Leprosy Settlement Historic District, NHL update 2020;* National Park Service Cultural Landscape Inventory Revised 2011***	DOH
Transportation and Circulation System	Airport Ops Building		Building	573939		816	N		Kalaupapa Leprosy Settlement Historic District, NHL update 2020*	DOT
Transportation and Circulation System	Airport Storage: Kamaka Air		Building			818	N		Kalaupapa Leprosy Settlement Historic District, NHL update 2020*	DOT
Transportation and Circulation System	Airport Terminal		Building	59989		703	Y	1, 2, 3, 4, 6* A,B,C,D***	Kalaupapa Leprosy Settlement Historic District, NHL update 2020;* National Park Service Cultural Landscape Inventory Revised 2011***	DOT
Transportation and Circulation System	Baldwin Street		Structure				Y	1, 2, 3, 4, 6* A,B,C,D***	Kalaupapa Leprosy Settlement Historic District, NHL update 2020;* National Park Service Cultural Landscape Inventory Revised 2011***	NPS
Transportation and Circulation System	Bay View Loop		Structure				Y	1, 2, 3, 4, 6* A,B,C,D***	Kalaupapa Leprosy Settlement Historic District, NHL update 2020;* National Park Service Cultural Landscape Inventory Revised 2011***	NPS
Transportation and Circulation System	Beach House Road		Structure	793344			Y	1, 2, 3, 4, 6* A,B,C,D***	Kalaupapa Leprosy Settlement Historic District, NHL update 2020;* National Park Service Cultural Landscape Inventory Revised 2011***	NPS
Transportation and Circulation System	Beretania Street		Structure				Y	1, 2, 3, 4, 6* A,B,C,D***	Kalaupapa Leprosy Settlement Historic District, NHL update 2020;* National Park Service Cultural Landscape Inventory Revised 2011***	NPS
Transportation and Circulation System	Bishop Loop		Structure				Y	1, 2, 3, 4, 6* A,B,C,D***	Kalaupapa Leprosy Settlement Historic District, NHL update 2020;* National Park Service Cultural Landscape Inventory Revised 2011***	NPS
Transportation and Circulation System	Bishop Road		Structure				Y	1, 2, 3, 4, 6* A,B,C,D***	Kalaupapa Leprosy Settlement Historic District, NHL update 2020;* National Park Service Cultural Landscape Inventory Revised 2011***	NPS

Resource Description	Resource Name	Secondary Name	Resource Type	LCS#	State Site # 50-60-03- ####	Park #	Contributing Resource	Significance Criteria	Source	Management (last updated 2015 OR taken from NHL "secondary name" column)
Transportation and Circulation System	Bishop Street		Structure				Y	1, 2, 3, 4, 6* A,B,C,D***	Kalaupapa Leprosy Settlement Historic District, NHL update 2020;* National Park Service Cultural Landscape Inventory Revised 2011***	NPS
Transportation and Circulation System	Coastal Road		Structure	793342			Y	1, 2, 3, 4, 6* A,B,C,D***	Kalaupapa Leprosy Settlement Historic District, NHL update 2020;* National Park Service Cultural Landscape Inventory Revised 2011***	NPS
Transportation and Circulation System	Crater Road		Structure	793345			Y	1, 2, 3, 4, 6* A,B,C,D***	Kalaupapa Leprosy Settlement Historic District, NHL update 2020;* National Park Service Cultural Landscape Inventory Revised 2011***	NPS
Transportation and Circulation System	Damien Road		Structure	793346			Y	1, 2, 3, 4, 6* A,B,C,D***	Kalaupapa Leprosy Settlement Historic District, NHL update 2020;* National Park Service Cultural Landscape Inventory Revised 2011***	NPS
Transportation and Circulation System	Goodhue Street		Structure				Y	1, 2, 3, 4, 6* A,B,C,D***	Kalaupapa Leprosy Settlement Historic District, NHL update 2020;* National Park Service Cultural Landscape Inventory Revised 2011***	NPS
Transportation and Circulation System	Haleakalā Street		Structure				Y	1, 2, 3, 4, 6* A,B,C,D***	Kalaupapa Leprosy Settlement Historic District, NHL update 2020;* National Park Service Cultural Landscape Inventory Revised 2011***	NPS
Transportation and Circulation System	Interior Road to Kauhakō Crater		Structure				Y	1, 2, 3, 4, 6* A,B,C,D***	Kalaupapa Leprosy Settlement Historic District, NHL update 2020;* National Park Service Cultural Landscape Inventory Revised 2011***	NPS
Transportation and Circulation System	Ka'iulani Street		Structure				Y	1, 2, 3, 4, 6* A,B,C,D***	Kalaupapa Leprosy Settlement Historic District, NHL update 2020;* National Park Service Cultural Landscape Inventory Revised 2011***	NPS
Transportation and Circulation System	Kalaupapa Airstrip		Structure				N		Kalaupapa Leprosy Settlement Historic District, NHL update 2020*	
Transportation and Circulation System	Kalaupapa Road Network		Structure				Y	1, 2, 3, 4, 6* A,B,C,D***	Kalaupapa Leprosy Settlement Historic District, NHL update 2020;* National Park Service Cultural Landscape Inventory Revised 2011***	NPS

Resource Description	Resource Name	Secondary Name	Resource Type	LCS#	State Site # 50-60-03- ####	Park #	Contributing Resource	Significance Criteria	Source	Management (last updated 2015 OR taken from NHL "secondary name" column)
Transportation and Circulation System	Kamehameha Street		Structure				Y	1, 2, 3, 4, 6* A,B,C,D***	Kalaupapa Leprosy Settlement Historic District, NHL update 2020;* National Park Service Cultural Landscape Inventory Revised 2011***	NPS
Transportation and Circulation System	Kapi'olani Street		Structure				Y	1, 2, 3, 4, 6* A,B,C,D***	Kalaupapa Leprosy Settlement Historic District, NHL update 2020;* National Park Service Cultural Landscape Inventory Revised 2011***	NPS
Transportation and Circulation System	Kilohana Street		Structure				Y	1, 2, 3, 4, 6* A,B,C,D***	Kalaupapa Leprosy Settlement Historic District, NHL update 2020;* National Park Service Cultural Landscape Inventory Revised 2011***	NPS
Transportation and Circulation System	Located at the Kalaupapa Airport		Building				N		Kalaupapa Leprosy Settlement Historic District, NHL update 2020*	NPS
Transportation and Circulation System	McKinley Street		Structure				Y	1, 2, 3, 4, 6* A,B,C,D***	Kalaupapa Leprosy Settlement Historic District, NHL update 2020;* National Park Service Cultural Landscape Inventory Revised 2011***	NPS
Transportation and Circulation System	McVeigh Road/ McVeigh Home Paving and Curbs		Structure	793344		843	Y	1, 2, 3, 4, 6* A,B,C,D***	Kalaupapa Leprosy Settlement Historic District, NHL update 2020;* National Park Service Cultural Landscape Inventory Revised 2011***	NPS
Transportation and Circulation System	Mission Street		Structure				Y	1, 2, 3, 4, 6* A,B,C,D***	Kalaupapa Leprosy Settlement Historic District, NHL update 2020;* National Park Service Cultural Landscape Inventory Revised 2011***	NPS
Transportation and Circulation System	Pali Trail	Kalaupapa Trail, Pali Road, Kupele Trail	Structure	573981		866	Y	1, 2, 3, 4, 6* A,B,C,D***	Kalaupapa Leprosy Settlement Historic District, NHL update 2020;* National Park Service Cultural Landscape Inventory Revised 2011***	NPS
Transportation and Circulation System	Paved Road South of Post Office		Structure				Y	1, 2, 3, 4, 6* A,B,C,D***	Kalaupapa Leprosy Settlement Historic District, NHL update 2020;* National Park Service Cultural Landscape Inventory Revised 2011***	NPS
Transportation and Circulation System	Paved Road West of Paschoal Hall		Structure				Y	1, 2, 3, 4, 6* A,B,C,D***	Kalaupapa Leprosy Settlement Historic District, NHL update 2020;* National Park Service Cultural Landscape Inventory Revised 2011***	NPS

Resource Description	Resource Name	Secondary Name	Resource Type	LCS#	State Site # 50-60-03- ####	Park #	Contributing Resource	Significance Criteria	Source	Management (last updated 2015 OR taken from NHL "secondary name" column)
Transportation and Circulation System	Puahi Street		Structure	793350			Y	1, 2, 3, 4, 6* A,B,C,D***	Kalaupapa Leprosy Settlement Historic District, NHL update 2020;* National Park Service Cultural Landscape Inventory Revised 2011***	NPS
Transportation and Circulation System	School Street		Structure				Y	1, 2, 3, 4, 6* A,B,C,D***	Kalaupapa Leprosy Settlement Historic District, NHL update 2020;* National Park Service Cultural Landscape Inventory Revised 2011***	NPS
Transportation and Circulation System	Staff Street/ Staff Row		Structure				Y	1, 2, 3, 4, 6* A,B,C,D***	Kalaupapa Leprosy Settlement Historic District, NHL update 2020;* National Park Service Cultural Landscape Inventory Revised 2011***	NPS
Transportation and Circulation System	Trail Access Road		Structure	793351			Y	1, 2, 3, 4, 6* A,B,C,D***	Kalaupapa Leprosy Settlement Historic District, NHL update 2020;* National Park Service Cultural Landscape Inventory Revised 2011***	NPS
Water Distribution System	Chlorinator Building	Medicine House	Building	1062723			Y	1, 2, 3, 4, 6*	Kalaupapa Leprosy Settlement Historic District, NHL update 2020*	
Water Distribution System	Filter Building		Building	1062727			Y	1, 2, 3, 4, 6*	Kalaupapa Leprosy Settlement Historic District, NHL update 2020*	
Water Distribution System	Kalaupapa Well and Steel Water Tanks		Structure				N		Kalaupapa Leprosy Settlement Historic District, NHL update 2020*	
Water Distribution System	Old Stone Water Reservoir	Kalawao Reservoir, Damien Road Cistern	Structure	56558		823	Y	1, 2, 3, 4, 6* A,B,C,D***	Kalaupapa Leprosy Settlement Historic District, NHL update 2020;* National Park Service Cultural Landscape Inventory Revised 2011***	NPS
Water Distribution System	Waikolu Bathhouse Site		Site			Flexner Site 16	Y	1, 2, 3, 4, 6*	Kalaupapa Leprosy Settlement Historic District, NHL update 2020*	NPS
Water Distribution System	Waikolu Water Pipeline Ruin Site		Site			845	Y	1, 2, 3, 4, 6* A,B,C,D***	Kalaupapa Leprosy Settlement Historic District, NHL update 2020;* National Park Service Cultural Landscape Inventory Revised 2011***	NPS
Water Distribution System	Water Tank		Structure	573952		854	Y	1, 2, 3, 4, 6* A,B,C,D***	Kalaupapa Leprosy Settlement Historic District, NHL update 2020;* National Park Service Cultural Landscape Inventory Revised 2011***	
Water Distribution System	Water Tank		Structure	573957		858	Y	1, 2, 3, 4, 6* A,B,C,D***	Kalaupapa Leprosy Settlement Historic District, NHL update 2020;* National Park Service Cultural Landscape Inventory Revised 2011***	NPS

Resource Description	Resource Name	Secondary Name	Resource Type	LCS#	State Site # 50-60-03- ####	Park #	Contributing Resource	Significance Criteria	Source	Management (last updated 2015 OR taken from NHL "secondary name" column)
West Coast Cemeteries	Brown Residence	NPS House – A. Sakurada.	Building	333837		3	Y	1, 2, 3, 4, 6* A,B,C,D***	Kalaupapa Leprosy Settlement Historic District, NHL update 2020;* National Park Service Cultural Landscape Inventory Revised 2011***	NPS
West Coast Cemeteries	Cambra Residence	DOH House – J. Rizonka.	Building	341955		4	Y	1, 2, 3, 4, 6* A,B,C,D***	Kalaupapa Leprosy Settlement Historic District, NHL update 2020;* National Park Service Cultural Landscape Inventory Revised 2011***	DOH
West Coast Cemeteries	Cemetery A - Catholic		Site				Y	1, 2, 3, 4, 6* A,B,C,D***	Kalaupapa Leprosy Settlement Historic District, NHL update 2020;* National Park Service Cultural Landscape Inventory Revised 2011***	NPS
West Coast Cemeteries	Cemetery B - Protestant		Site				Y	1, 2, 3, 4, 6* A,B,C,D***	Kalaupapa Leprosy Settlement Historic District, NHL update 2020;* National Park Service Cultural Landscape Inventory Revised 2011***	NPS
West Coast Cemeteries	Cemetery C - Catholic		Site				Y	1, 2, 3, 4, 6* A,B,C,D***	Kalaupapa Leprosy Settlement Historic District, NHL update 2020;* National Park Service Cultural Landscape Inventory Revised 2011***	NPS
West Coast Cemeteries	Cemetery D - Protestant		Site				Y	1, 2, 3, 4, 6* A,B,C,D***	Kalaupapa Leprosy Settlement Historic District, NHL update 2020;* National Park Service Cultural Landscape Inventory Revised 2011***	NPS
West Coast Cemeteries	Cemetery E - Protestant		Site				Y	1, 2, 3, 4, 6* A,B,C,D***	Kalaupapa Leprosy Settlement Historic District, NHL update 2020;* National Park Service Cultural Landscape Inventory Revised 2011***	NPS
West Coast Cemeteries	Cemetery F - The Church of Jesus Christ of the Latter Day Saints		Site				Y	1, 2, 3, 4, 6* A,B,C,D***	Kalaupapa Leprosy Settlement Historic District, NHL update 2020;* National Park Service Cultural Landscape Inventory Revised 2011***	NPS
West Coast Cemeteries	Cemetery G - Old Hawaiian Cemetery and Americans of Japanese Ancestry (AJA)		Site				Y	1, 2, 3, 4, 6* A,B,C,D***	Kalaupapa Leprosy Settlement Historic District, NHL update 2020;* National Park Service Cultural Landscape Inventory Revised 2011***	NPS
West Coast Cemeteries	Cemetery H – Catholic		Site				Y	1, 2, 3, 4, 6* A,B,C,D***	Kalaupapa Leprosy Settlement Historic District, NHL update 2020;* National Park Service Cultural Landscape Inventory Revised 2011***	NPS

Resource Description	Resource Name	Secondary Name	Resource Type	LCS#	State Site # 50-60-03- ####	Park #	Contributing Resource	Significance Criteria	Source	Management (last updated 2015 OR taken from NHL "secondary name" column)
West Coast Cemeteries	Cemetery J - Catholic		Site				Y	1, 2, 3, 4, 6* A,B,C,D***	Kalaupapa Leprosy Settlement Historic District, NHL update 2020;* National Park Service Cultural Landscape Inventory Revised 2011***	NPS
West Coast Cemeteries	Cemetery K - Americans of Japanese Ancestry		Site				Y	1, 2, 3, 4, 6* A,B,C,D***	Kalaupapa Leprosy Settlement Historic District, NHL update 2020;* National Park Service Cultural Landscape Inventory Revised 2011***	NPS
West Coast Cemeteries	Cemetery L - Chinese		Site				Y	1, 2, 3, 4, 6* A,B,C,D***	Kalaupapa Leprosy Settlement Historic District, NHL update 2020;* National Park Service Cultural Landscape Inventory Revised 2011***	NPS
West Coast Cemeteries	Cemetery M - Ka Huiono Oiwi o Hawai'i		Site				Y	1, 2, 3, 4, 6* A,B,C,D***	Kalaupapa Leprosy Settlement Historic District, NHL update 2020;* National Park Service Cultural Landscape Inventory Revised 2011***	NPS
West Coast Cemeteries	Chicken Coop		Structure				Y	1, 2, 3, 4, 6*	Kalaupapa Leprosy Settlement Historic District, NHL update 2020*	NPS
West Coast Cemeteries	Kamehameha Street Building	Keao Residence, DOH House – W. Kaiama.	Building	56104		9	Y	1, 2, 3, 4, 6* A,B,C,D***	Kalaupapa Leprosy Settlement Historic District, NHL update 2020;* National Park Service Cultural Landscape Inventory Revised 2011***	DOH
West Coast Cemeteries	Kamehameha Street Building 65	Ike's Garage.	Building	101952		65BV	Y	1, 2, 3, 4, 6* A,B,C,D***	Kalaupapa Leprosy Settlement Historic District, NHL update 2020;* National Park Service Cultural Landscape Inventory Revised 2011***	Private
West Coast Cemeteries	Kamehameha Street Residence 15	DOH House – Z. Kaulia-Pelland.	Building	55726		15	Y	1, 2, 3, 4, 6* A,B,C,D***	Kalaupapa Leprosy Settlement Historic District, NHL update 2020;* National Park Service Cultural Landscape Inventory Revised 2011***	DOH
West Coast Cemeteries	Kamehameha Street Residence 7	Silva Residence, DOH House – L. Brittain.	Building	55800		7	Y	1, 2, 3, 4, 6* A,B,C,D***	Kalaupapa Leprosy Settlement Historic District, NHL update 2020;* National Park Service Cultural Landscape Inventory Revised 2011***	DOH
West Coast Cemeteries	Miriam Mina Residence	Boogie's Sister's House, NPS House – R. Giblin.	Building	235713		2	Y	1, 2, 3, 4, 6* A,B,C,D***	Kalaupapa Leprosy Settlement Historic District, NHL update 2020;* National Park Service Cultural Landscape Inventory Revised 2011***	NPS

Resource Description	Resource Name	Secondary Name	Resource Type	LCS#	State Site # 50-60-03- ####	Park #	Contributing Resource	Significance Criteria	Source	Management (last updated 2015 OR taken from NHL "secondary name" column)
West Coast Cemeteries	Norbert Palea Residenc	DOH House – Palea.	Building	59951		25	Y	1, 2, 3, 4, 6* A,B,C,D***	Kalaupapa Leprosy Settlement Historic District, NHL update 2020;* National Park Service Cultural Landscape Inventory Revised 2011***	DOH
West Coast Cemeteries	Olivia's Beach House	Olivia Breitha's Beach House, Gloria Marks's Beach House, Green Beach House.	Building	55729		671	Y	1, 2, 3, 4, 6* A,B,C,D***	Kalaupapa Leprosy Settlement Historic District, NHL update 2020;* National Park Service Cultural Landscape Inventory Revised 2011***	Private
West Coast Cemeteries	Residence 22	Plumeria House, Plumeria Inn.	Building	55724		22	Y	1, 2, 3, 4, 6* A,B,C,D***	Kalaupapa Leprosy Settlement Historic District, NHL update 2020;* National Park Service Cultural Landscape Inventory Revised 2011***	Unknown: NPS or Private
West Coast Cemeteries	Storage Shed		Building	573888		4A	Y	1, 2, 3, 4, 6* A,B,C,D***	Kalaupapa Leprosy Settlement Historic District, NHL update 2020;* National Park Service Cultural Landscape Inventory Revised 2011***	Private
West Coast Cemeteries	West Coast Cemeteries Outbuilding Ruins		Site				Y	1, 2, 3, 4, 6*	Kalaupapa Leprosy Settlement Historic District, NHL update 2020*	NPS
	Kamehameha Street Building 1-669			55727		1-669	Y	A,B,C,D***	National Park Service Cultural Landscape Inventory Revised 2011***	

APPENDIX F

Outline for Superintendent Report

Fiscal Year Accomplishments:

- I. Planning and Compliance
 - a. 106 streamlined projects
 - b. 106 standard review projects
- II. Executed work
- III. CRM Team
 - a. CRM Team qualifications
 - b. CRM Team training
- IV. updated inventories, initiatives, and identifications of any PA amendments needed.

Next Fiscal Year

- V. Compliance planned:
 - a. 106 streamlined projects
 - b. 106 standard review projects
- VI. Planned Work to be Executed:
- VII. Staffing and vacancies.