



Alternative 1 - No Action

The Memorial continues to function much the way it does today. The management of the site remains unchanged. Access to the Memorial is primarily from the north at Eads Bridge via car and Metro, and by pedestrians from the west at the Old Courthouse. The design of the Memorial centers on the 1964 final Conceptual Master Plan, which guides park managers on the completion and preservation of the Memorial grounds. The National Park Service continues to look for opportunities to complete unfinished portions of the design, contingent on project approval and funding.

The lead preservation goal is to protect the National Historic Landmark and the fundamental resources and values embodied at Jefferson National Expansion Memorial. In addition, the NPS continues to protect natural resource values in support of cultural landscape integrity. The look of the Memorial grounds and overlooks would remain, on the whole, unchanged, though repairs and maintenance of site walkways, benches and plantings to their original crisp finish would be accomplished over time. Luther Ely Smith Square retains its current form, with seasonal plantings, trees, lawns, walks and benches. Museum collections and archives continue to be housed at the Old Courthouse in a temperature-controlled storage facility, when not on exhibit in the Museum of Westward Expansion or in the Old Courthouse.

The Memorial currently offers over 5,000 programs. Educational groups and other organized tour groups make up the bulk of the special programming at the site and 154,000 park visitors take part in these activities annually. In addition, one to four special events are provided on the Memorial grounds annually. These educational and interpretive programs continue to be provided to the same extent in this alternative, and the exhibits at the Old Courthouse and Museum of Westward Expansion remain as they are today.

The only connection between the Old Courthouse and the Gateway Arch remains the at-grade crossing at Memorial Drive. The NPS continues to coordinate with the City and State to enhance the pedestrian environment, and continues to partner with the City of St. Louis and the State of Missouri to unify streetscape along Gateway Mall and streets adjacent to the Memorial, including L.K. Sullivan Boulevard and Memorial Drive. In continuation of a long-standing agreement, the NPS would work with the City of St. Louis to proactively encourage compatible riverfront improvements on the west bank of the Mississippi River. The NPS sustains existing partnerships for the provision of educational and interpretive programs, visitor services, riverfront development and transportation.

At present, barrier-free routes from the Arch grounds to the riverfront do not exist within the Memorial and the existing entrances to the visitor center and museum under the Arch do not meet codes for barrier-free access. Under this alternative, handicapped-accessible routes from the Gateway Arch to the riverfront are not provided, and the entrances under the Arch are not updated to meet ADA/universal design standards. Visitor screening for security under the Arch continues to be accommodated at the current entrances.

The Memorial's operations remain the same. Visitor parking continues in the multi-story parking garage at the north end of the park on Washington Avenue and handicapped accessible parking in the parking lot adjacent to the Old Cathedral. No accommodations for oversized vehicle parking are planned for the park, but facilities are available at a short distance from the Memorial. The limited food service (vending) currently available in the existing visitor center under the Arch is maintained. The maintenance facility for the Memorial remains at the south end of the site on Poplar Street.

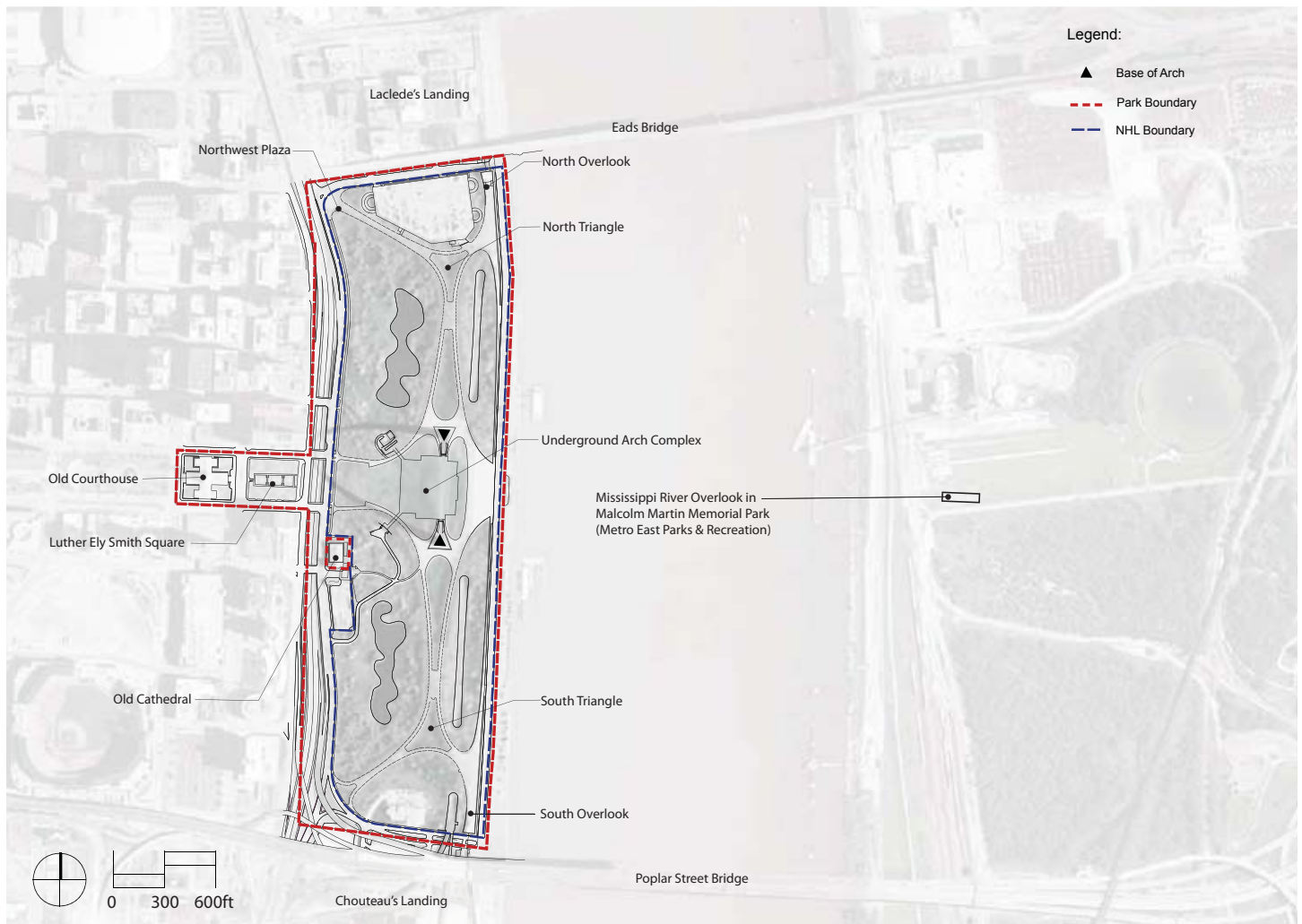
The Memorial's focus remains on the west side of the Mississippi River. The 91-acre boundary of the Memorial remains unchanged, though NPS retains the authorization to establish a boundary of up to 100 acres on the East St. Louis riverfront in the future.

How We Got Here

In June 2008, the National Park Service (NPS) released a set of preliminary alternatives outlining potential management scenarios for Jefferson Expansion National Memorial. Thousands of comments were received and subsequently analyzed by the NPS. As a result of public input, Alternative 2 was dropped and the remaining preliminary alternatives were revised. These alternatives will be described in more detail in the Draft General Management Plan / Environmental Impact Statement (GMP/EIS) to be released for public review and comment during January 2009.



Alternative 1 - No Action



Next Steps

The No Action alternative and alternatives 3, 4 and 5 will be carried forward into the Draft Jefferson National Expansion Memorial GMP/EIS, to be released in Winter 2009. In the draft plan, each of the alternatives will be more fully described and the financial and environmental consequences of each alternative will be presented. The public will have 45 days to review the document, and during this time, the NPS will host public meetings in order to provide the public an opportunity to speak directly with park managers and members of the planning team. I encourage everyone to comment on the document and provide ways the alternatives can be strengthened.

Following the close of public review, each of your comments will be read and considered carefully. The team will respond to all substantive comments and document any changes to the plan before issuing a final GMP/EIS.

Sincerely,

Jefferson National Expansion Memorial