



Preferred

revised Preliminary Alternative 3 - Program Expansion

The Memorial is revitalized by expanded programming, facilities and partnerships. In this alternative, the NPS capitalizes on multiple opportunities to expand the visitor experience throughout the Memorial. A design competition akin to the 1947 competition will be held to generate ideas to revitalize the Memorial grounds, expand interpretation, education opportunities and visitor amenities (e.g., restaurant, restrooms) in an area bounded by Memorial Drive, Washington Avenue, Poplar Street, Luther Ely Smith Square and the north and south reflecting ponds. Near the close of the competition, the final design entries will undergo environmental and historic preservation review by the NPS, prior to final approval by the NPS.

To the greatest extent possible, NPS will preserve the essential character-defining features of the National Historic Landmark designed landscape and structures, and protect the full range of fundamental resources and values of the Memorial by delineating the design parameters in the competition program. The look of the Memorial grounds and overlooks could potentially be changed, so long as the essential character-defining elements of the Memorial grounds are retained. Museum collections and archives continue to be housed at the Old Courthouse in a temperature-controlled storage facility, when not on exhibit in the Museum of Westward Expansion or in the Old Courthouse.

The NPS strengthens educational and interpretive programs currently offered at the Memorial and expands the opportunities for visitors to participate in more interactive experiences. The grounds surrounding the Gateway Arch accommodate and promote more visitor activities and special events than are currently provided. Additionally, the exhibits at the Old Courthouse and in the Museum of Westward Expansion under the Gateway Arch are redesigned to engage visitors in more active participation.

Increased connectivity between the Old Courthouse and the Gateway Arch is included within the guidelines for the design competition. Proposals for increased connectivity could include any combination of a single elevated deck, multiple bridges and improved at-grade pedestrian crossings across Memorial Drive. The NPS will coordinate with the City and State to enhance the pedestrian environment, and unify streetscape along Gateway Mall and streets adjacent to the Memorial, including L.K. Sullivan Boulevard and Memorial Drive, and increase the connectivity between the adjacent downtown, Laclede's and Chouteau's Landing neighborhoods. The NPS will continue to work with the City of St. Louis to proactively encourage compatible riverfront improvements on the west bank of the Mississippi River and initiate similar partnerships for the east bank of the Mississippi River. The NPS sustains long-standing partnerships for the provision of educational and interpretive programs, visitor services, riverfront development and transportation, and develops new partnerships to assist in managing the East St. Louis addition in similar ways, and to sponsor and manage a design competition.

Barrier-free routes from the Arch grounds to the riverfront are established within the Memorial under this alternative, and the existing entrances to the visitor center and museum under the Arch are redesigned to meet ADA/universal design standards. Visitor screening for security under the Arch will stay at the current entrances. Any new facilities developed under this alternative will be designed to include barrier-free access and heightened security requirements.

Visitor parking is retained on-site for passenger vehicles and expanded to provide for oversized recreational vehicles to park at the Memorial. Parking may still be provided in a location adjacent to the Old Cathedral, so long as landscape integrity and visual compatibility are addressed. Ultimately, the location of parking will be determined as a result of the design competition. The food service (vending) currently available in the existing visitor center under the Arch is expanded, and may be provided for elsewhere at the Memorial. The Memorial's maintenance facility may move outside of the Memorial boundary; ultimately, the location of the NPS maintenance operations will be determined through the design competition.

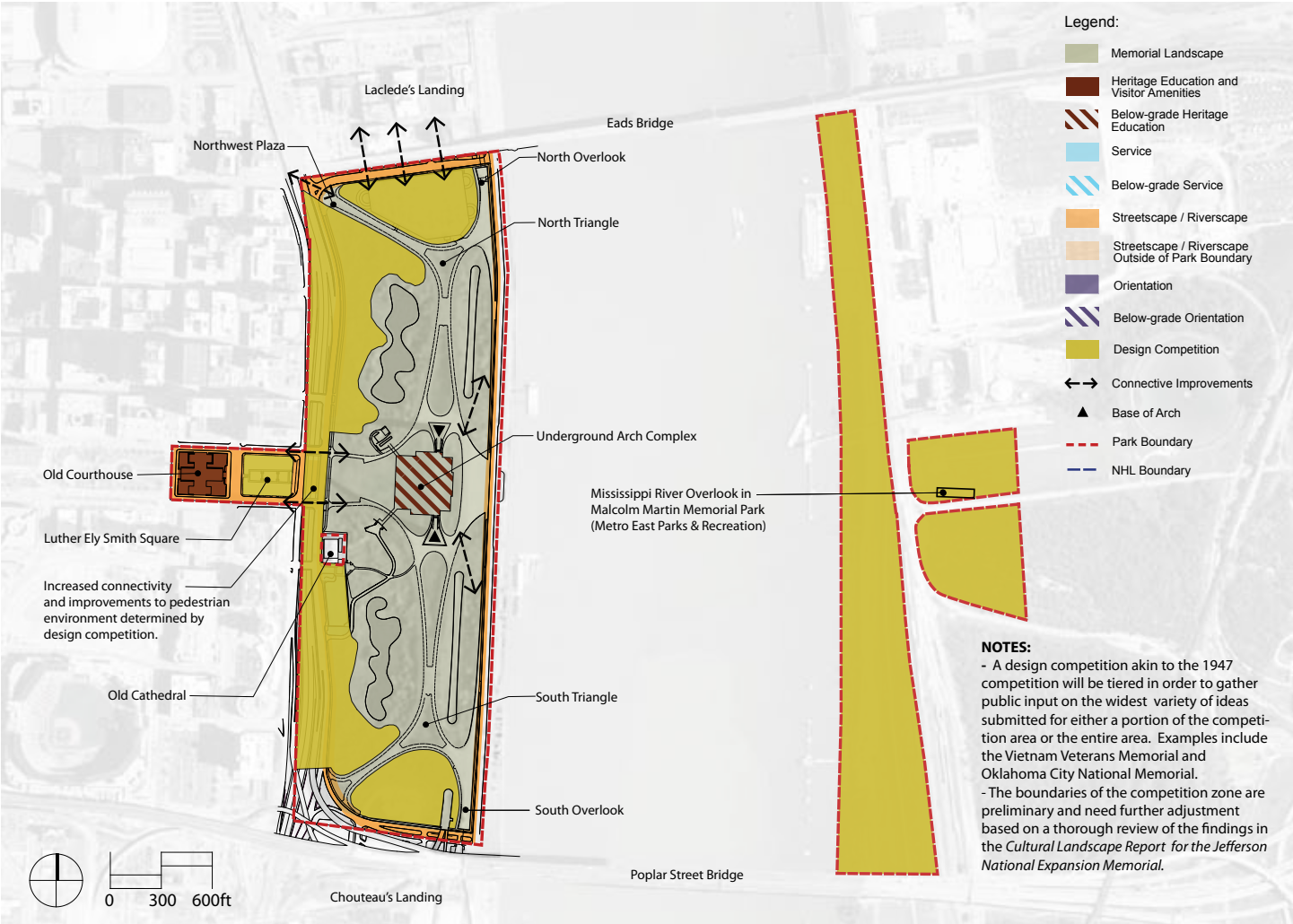
The 91-acre boundary of the Memorial is amended to add approximately 50 acres in East St. Louis. Any acquisitions would be by willing seller only.

How We Got Here

In June 2008, the National Park Service (NPS) released a set of preliminary alternatives outlining potential management scenarios for Jefferson Expansion National Memorial. Thousands of comments were received and subsequently analyzed by the NPS. As a result of public input, Alternative 2 was dropped and the remaining preliminary alternatives were revised. These alternatives will be described in more detail in the Draft General Management Plan / Environmental Impact Statement (GMP/EIS) to be released for public review and comment during January 2009.



revised Preliminary Alternative 3 - Program Expansion



Heritage Education and Visitor Amenities	Original Landscape	Orientation	Streetscape	Service	Design Competition
Provide visitor orientation, interpretation, education and amenities.	Preservation of the National Historic Landmark (NHL).	Provide visitor orientation, enhance visual and physical connectivity and support Memorial operations (parking).	Create visual and physical connectivity between the city streets, waterfront and the Memorial.	Support Memorial operations.	Provide a canvass for a design competition to explore creative approaches to revitalizing the Memorial.

Next Steps

The No Action alternative and alternatives 3, 4 and 5 will be carried forward into the Draft Jefferson National Expansion Memorial GMP/EIS, to be released in Winter 2009. In the draft plan, each of the alternatives will be more fully described and the financial and environmental consequences of each alternative will be presented. The public will have 45 days to review the document, and during this time, the NPS will host public meetings in order to provide the public an opportunity to speak directly with park managers and members of the planning team. I encourage everyone to comment on the document and provide ways the alternatives can be strengthened.

Following the close of public review, each of your comments will be read and considered carefully. The team will respond to all substantive comments and document any changes to the plan before issuing a final GMP/EIS.

Sincerely,

Tom Bradley