

Figure 1.75: Rendered existing conditions plan of Poplar Grove completed for the Petersburg National Military Park master plan, c.1941. National Park Service Branch of Plans and Design, from data as of September 1, 194- (1941?), drawing PETE 325-2073, National Park Service Technical Information Center, Lakewood, Colorado.



Figure 1.76: Item in Richmond *Times-Dispatch* on Memorial Day Services at Poplar Grove, 29 May 1957, illustrating work on cemetery that spring which included raising of the headstones and blocks. Clipping in RG 79, Series A58, Box 537, Poplar Grove National Cemetery, National Archives II, College Park, Maryland.



Figure 1.77: View looking northeast across the center of the cemetery in July 1968 showing the interpretive signs and register sign near the flagstaff (c.1957), small signs identifying the radial drives (c.1957), gun monuments (1869), settees (c.1878), and flagstaff with guy wires (1930), as well as the headstones laid flush with the ground in 1934 and raised in 1957. The identity of the people is not known. Photograph by Fred Bell, June 2, 1968, Petersburg National Battlefield, Poplar Grove administrative records.

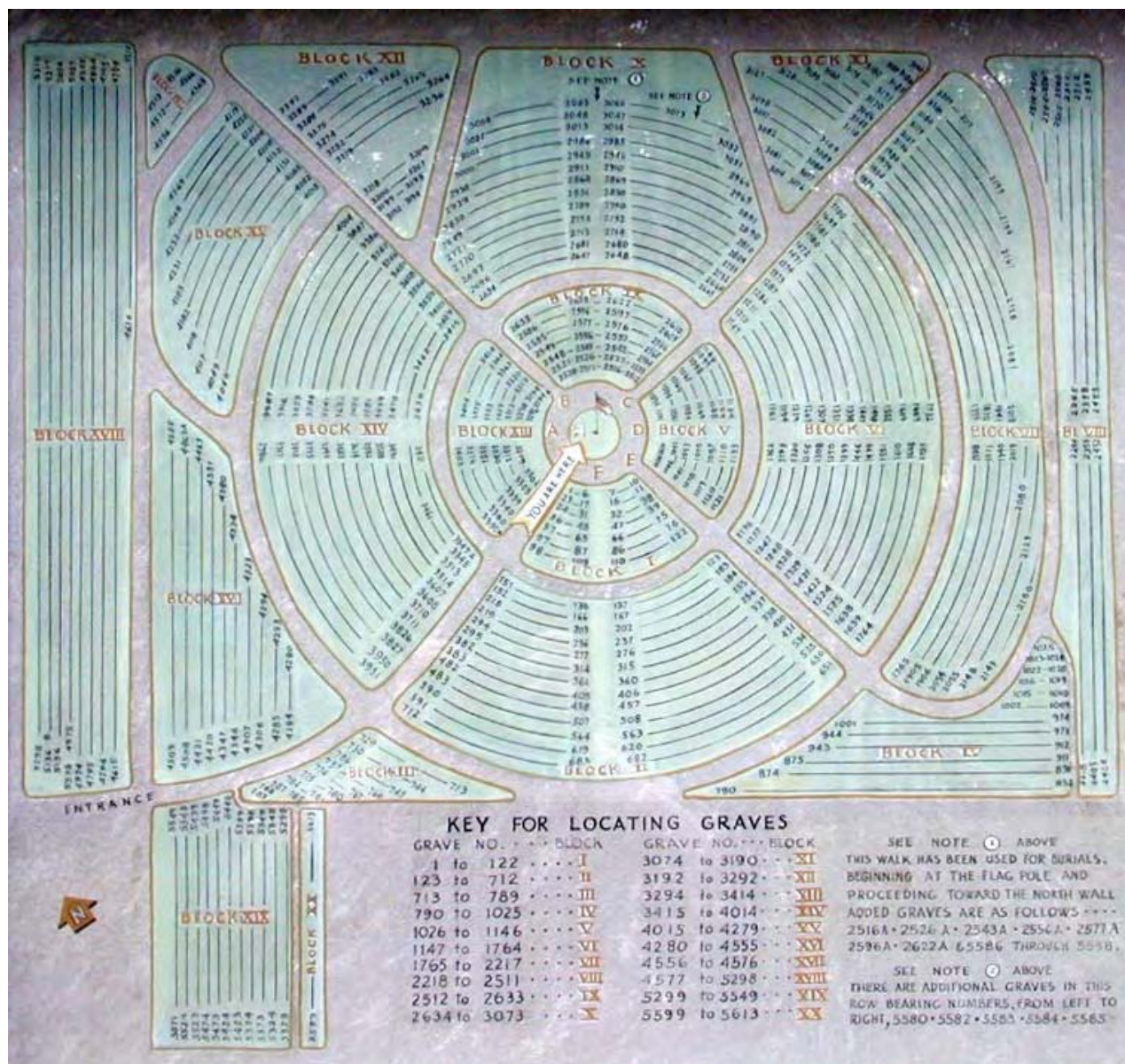


Figure 1.78: Plan of Poplar Grove showing c.1957 redesignation of cemetery divisions and sections into blocks, and naming of radiating drives by letter. This plan was posted, along with interpretive text and a drawing of Poplar Grove Church, in one of the aluminum-frame signs installed to either side of the flagstaff in c.1957. Petersburg National Battlefield.

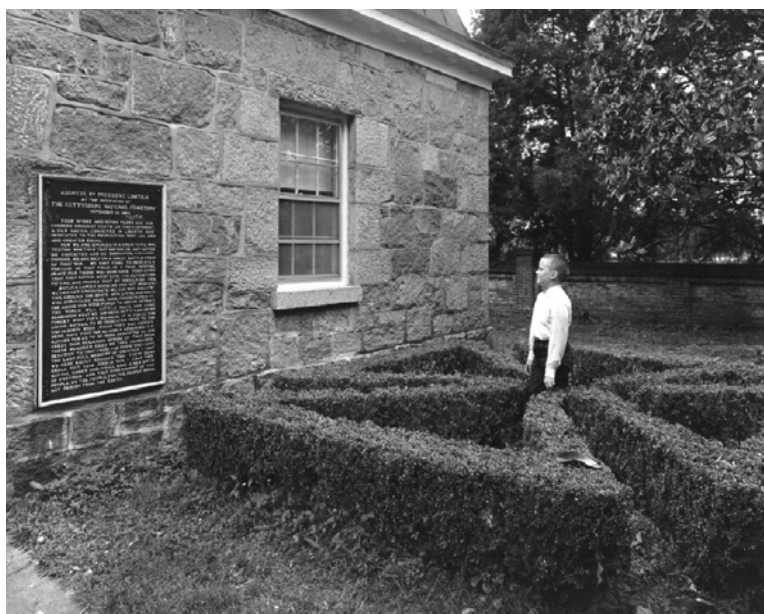


Figure 1.79: View of the boxwood Maltese cross hedge (c.1871) located in front of the lodge, showing Gettysburg Address tablet on the lodge wall (added prior to 1909). The identity of the boy is not known. Photograph by Fred Bell, June 2, 1968, Petersburg National Battlefield, Poplar Grove administrative records.

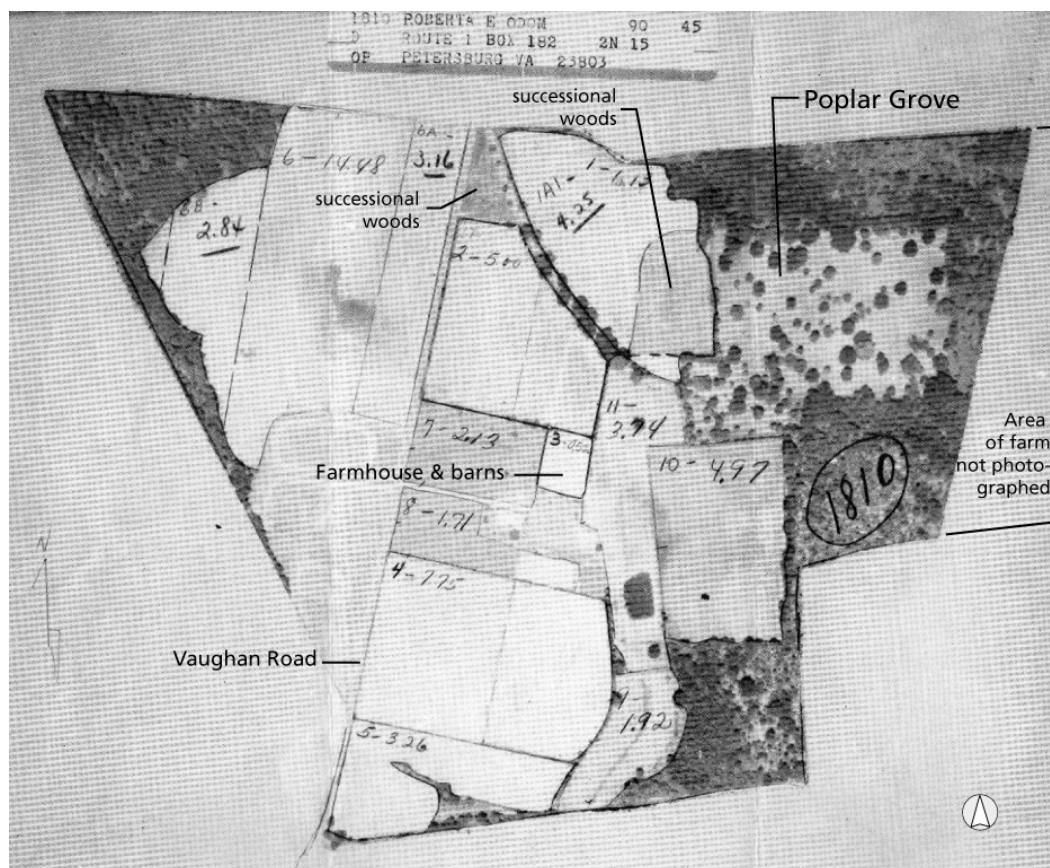


Figure 1.80: Aerial photograph of the Odom Farm surrounding Poplar Grove National Cemetery taken in 1969. The photograph does not include the eastern part of the farm (to right of the cemetery). Petersburg National Battlefield, Poplar Grove administrative records.

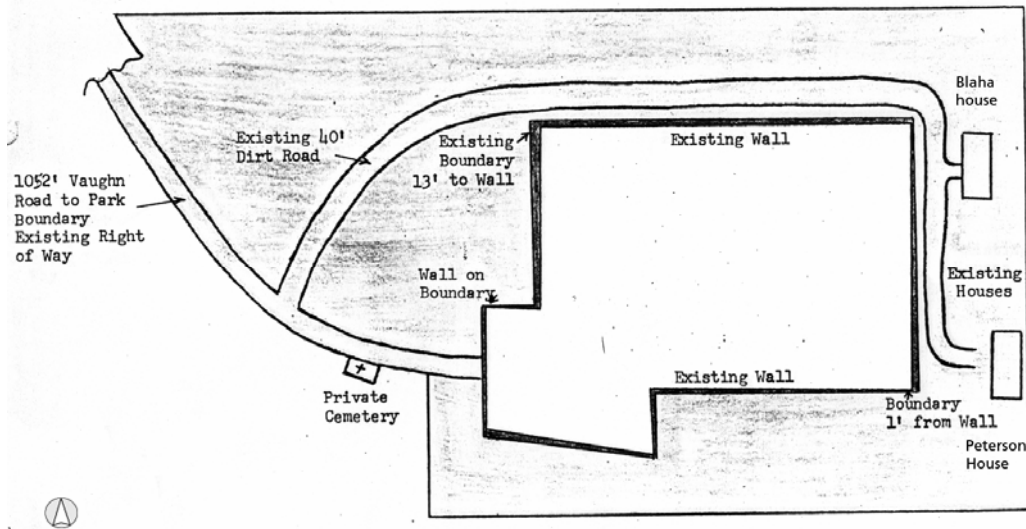


Figure 1.81: Sketch, made by park staff in 1977, showing Blaha and Peterson houses and access drive built in c.1972 within subdivisions of the Odom Farm. The sketch does not show property boundaries. The shaded area was proposed for acquisition by the federal government in 1977. Petersburg National Battlefield, Poplar Grove administrative records, annotated by SUNY ESF.



Figure 1.82: View looking east across the cemetery from the main entrance drive toward the Peterson house built in c.1972, photographed 1978. From "Legislative Materials to support Acquisition of Additional Acreage for Poplar Grove National Cemetery" (Petersburg National Battlefield, 10 February 1978), File PETE D-58, National Park Service Technical Information Center, Lakewood, Colorado.



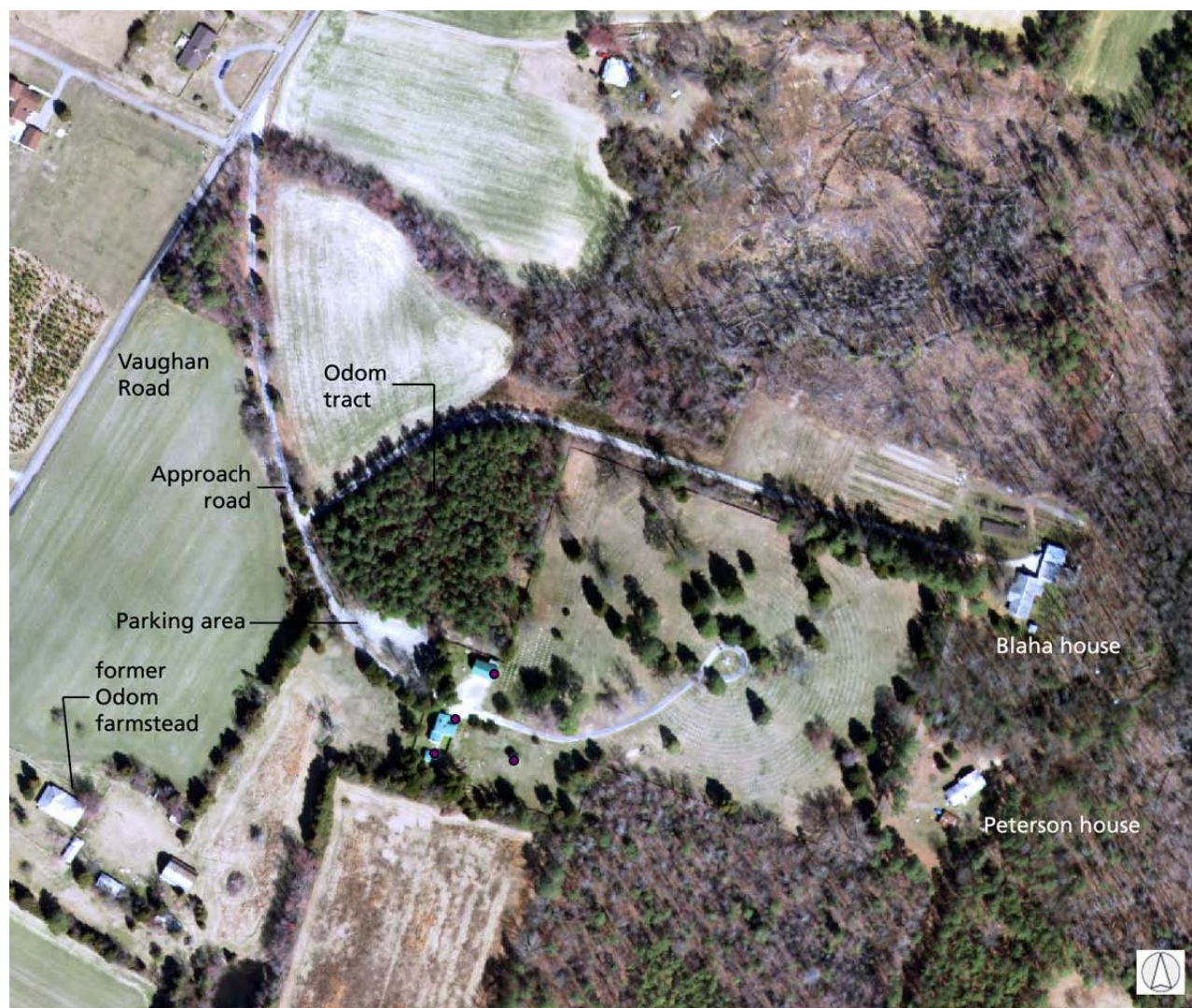


Figure 1.85: Aerial photograph of Poplar Grove National Cemetery and its approach road, spring 2004. Petersburg National Battlefield, Poplar Grove GIS database.