



Figure 1.48: The c.1876 granite and iron entrance gate at Fort Harrison National Cemetery near Richmond, photographed in 1902. The same style gate was built at Poplar Grove in 1876. Records of the Quartermaster General, RG 92, Still Pictures Division, National Archives II, College Park, Maryland.



Figure 1.49: The headstones and blocks installed at Poplar Grove National Cemetery in 1877, view looking southeast from north side of cemetery, c.1930. Reproduced from *The City of Petersburg: Metropolis of Southside Virginia*. (N.p.: Louise Studio, c.1930), Petersburg Public Library.

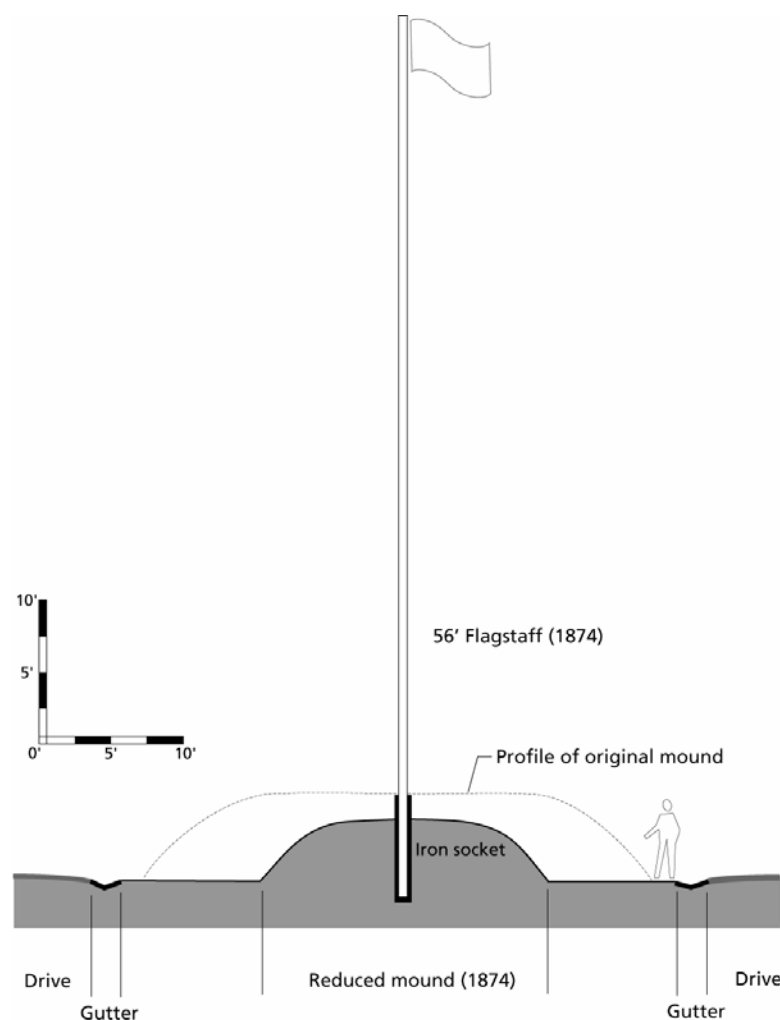


Figure 1.50: Section showing scale of reduced mound and flagstaff to original mound and drives. SUNY ESF.

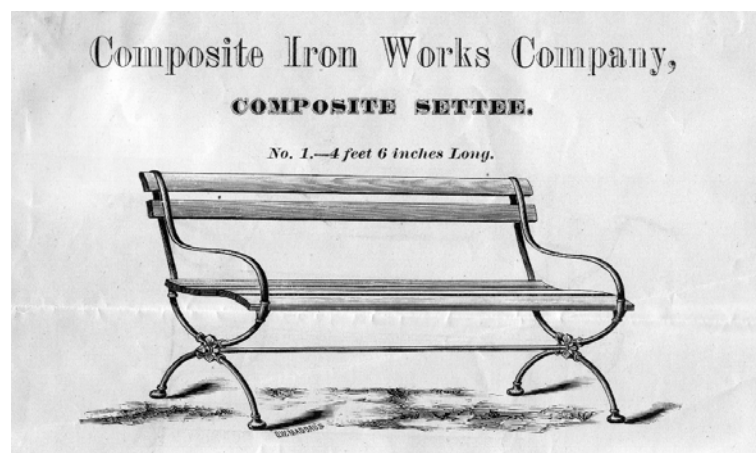


Figure 1.51: Proposal for the "Composite Settee" submitted to the Quartermaster General's Office in June 1877 by the Composite Iron Works Company of New York City. The settees installed at Poplar Grove were similar to this design, but without arms. RG 92, Records of the Quartermaster General Entry 689, National Archives, Washington, D. C.



Figure 1.52: Examples of cast-iron tablets at Culpeper National Cemetery made in 1881 by the Rock Island Arsenal, photographed 2006. These same tablets were installed at Poplar Grove. The tablet at left contains the text of "General Orders No. 80, War Department Adjutant Generals Office, Washington, September 1, 1875;" the tablet at right, the text from "An Act to Establish and Protect National Cemeteries Approved February 22, 1867." SUNY ESF.

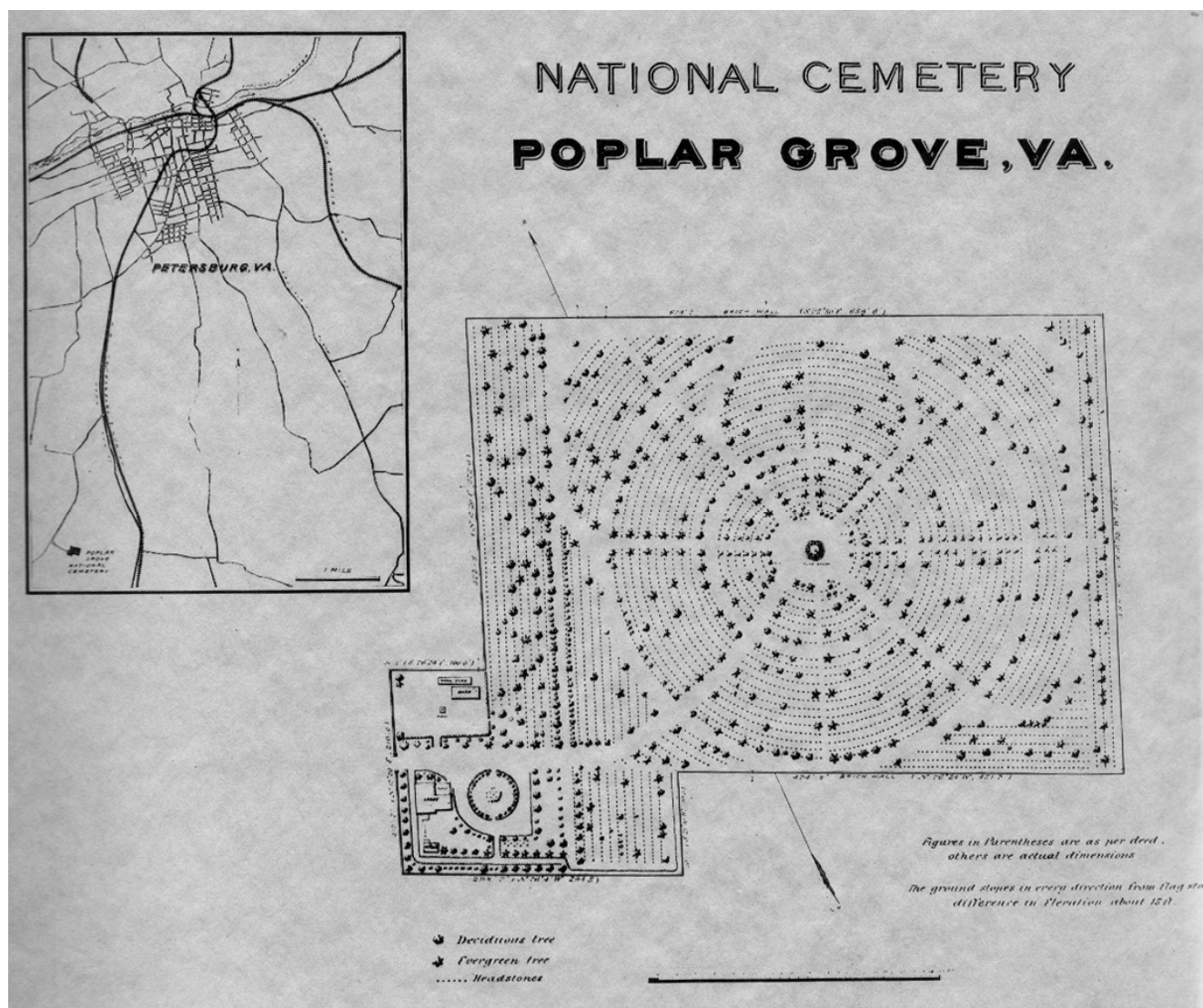


Figure 1.53: Plan of Poplar Grove drawn by the Office of the Quartermaster General, May 18, 1892, from a bound document of similar plans produced for all national cemeteries in 1892-1893. The notes at the right refer to the topography and boundaries of the cemetery; those at the left are a key to coniferous and deciduous trees, and headstones. RG 92, Records of the Quartermaster General Entry 691, National Archives, Washington, D. C.



Figure 1.54: Monument erected by the Commonwealth of Pennsylvania in 1910 at Culpeper National Cemetery, Culpeper, Virginia, photographed 2006. SUNY ESF.

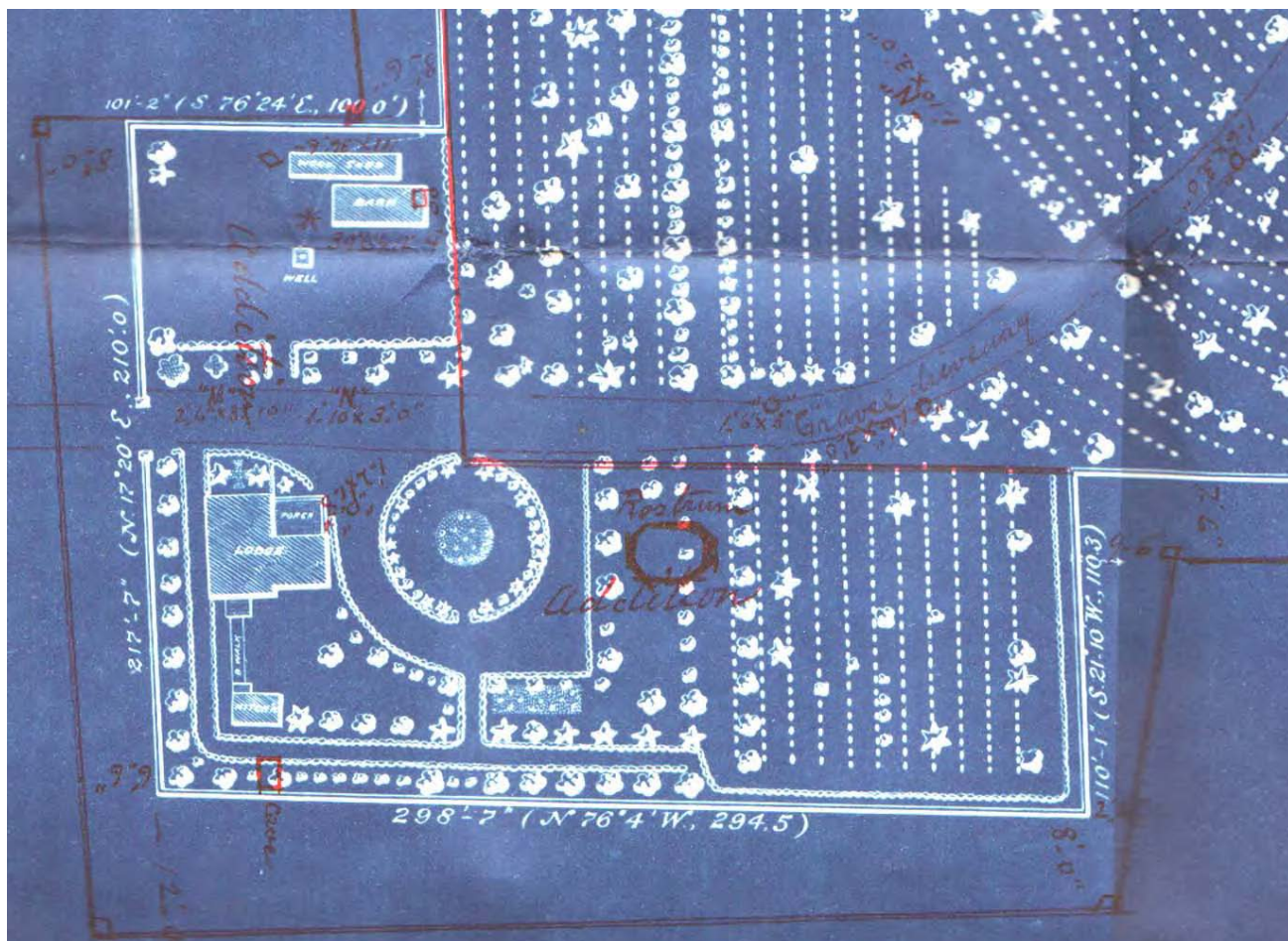


Figure 1.55: Detail of 1892 plan of Poplar Grove showing annotations (in red ink) made in 1909. Additions since 1892 included rostrum, cave (at lower left), and grave surface on main drive; the annotations also indicate tablets (indicated by letters with dimensions), which had been installed in c.1882 but were not shown on original plan. Records of the Quartermaster General, Entry 576, Poplar Grove National Cemetery Records, box 57, National Archives, Washington, D. C.



Figure 1.56: The Poplar Grove rostrum, completed in 1897, view looking east from a 1967 photograph by Fred Bell. The structure was historically painted black with a light blue ceiling and a red roof. Poplar Grove administrative files, Petersburg National Battlefield.