

# Potomac Park

Potomac Park Levee Project // 17th Street Closure // Washington DC





Potomac Park

OPTION 1

Arc Wall



Trees Lost	Phase 1:	14
	Phase 2:	25
	Total:	39
	17th Street Trees Lost:	2
	Walnuts Lost:	3
	Sycamore Lost:	0
Wall Lengths	Phase 1 Flood Wall:	337'-8"
	Phase 2 Stone Clad Walls:	Same
Post and Panel Closure Length		
	Phase 1:	94'-0"
	Phase 2:	Same
Area of Impact (Phase 2)	86,800 sq. ft.	
Opportunity for Placemaking	Yes	

Potomac Park

OPTION 2A

Gate Walls Asymmetrical



Trees Lost	Phase 1:	18
	Phase 2:	18
	Total:	36
	17th Street Trees Lost:	6
	Walnuts Lost:	0
	Sycamore Lost:	0
Wall Lengths	Phase 1 Flood Wall:	259'-0"
	Phase 2 Stone Clad Walls:	263'-3"
Post and Panel Closure Length		
	Phase 1:	108'-6"
	Phase 2:	Same
Area of Impact (Phase 2):		112,770 sq. ft.
Opportunity for Placemaking:		Yes

Potomac Park

OPTION 2B

Gate Walls Symmetrical



Trees Lost	Phase 1:	16
	Phase 2:	29
	Total:	45
	17th Street Trees Lost:	6
	Walnuts Lost:	0
	Sycamore Lost:	0
Wall Lengths	Phase 1 Flood Wall:	282'-0"
	Phase 2 Stone Clad Walls:	255'-6"
Post and Panel Closure Length		
	Phase 1:	111'-0"
	Phase 2:	158'-0"
Area of Impact (Phase 2):		107,150 sq. ft.
Opportunity for Placemaking:		Yes



# Potomac Park3

OPTION

## Constitution Garden Walls



### Trees Lost

Phase 1:	18
Phase 2:	63
Total:	81
17th Street Trees Lost:	1
Walnuts Lost:	0
Sycamore Lost:	0

### Wall Lengths

Phase 1 Flood Wall:	376'-3"
Phase 2 Stone Clad Walls:	745'-6"

### Post and Panel Closure Length

Phase 1:	101'-9"
Phase 2:	236'-4"
(+ add'l 110'-0" Jersey Barrier Closure)	

Area of Impact (Phase 2): 98,140 sq. ft.

Opportunity for Placemaking: Yes

# Potomac Park4

OPTION

## Land Bridge



### Trees Lost

Phase 1:	n/a
Phase 2:	n/a
Total:	102
17th Street Trees Lost:	18
Walnuts Lost:	2
Sycamore Lost:	1

### Wall Lengths

Phase 1 Flood Wall:	n/a
Phase 2 Stone Clad Walls:	n/a

### Post and Panel Closure Length

Phase 1:	n/a
Phase 2:	n/a

Area of Impact (Phase 2): 239,750 sq. ft.

Opportunity for Placemaking: No

# Potomac Park5

OPTION

## Culvert/Jersey Barriers



### Trees Lost

Phase 1:	n/a
Phase 2:	n/a
Total:	19
17th Street Trees Lost:	0
Walnuts Lost:	0
Sycamore Lost:	0

### Wall Lengths

Phase 1 Flood Wall:	779'-7" (Jersey Barriers/ Stacked Culverts)
Phase 2 Stone Clad Walls:	n/a

### Post and Panel Closure Length

Phase 1:	n/a
Phase 2:	n/a

Area of Impact (Phase 2): 24,312 sq. ft.

Opportunity for Placemaking: No





Potomac Park Levee Project

Aerial Site Photos - Existing Conditions



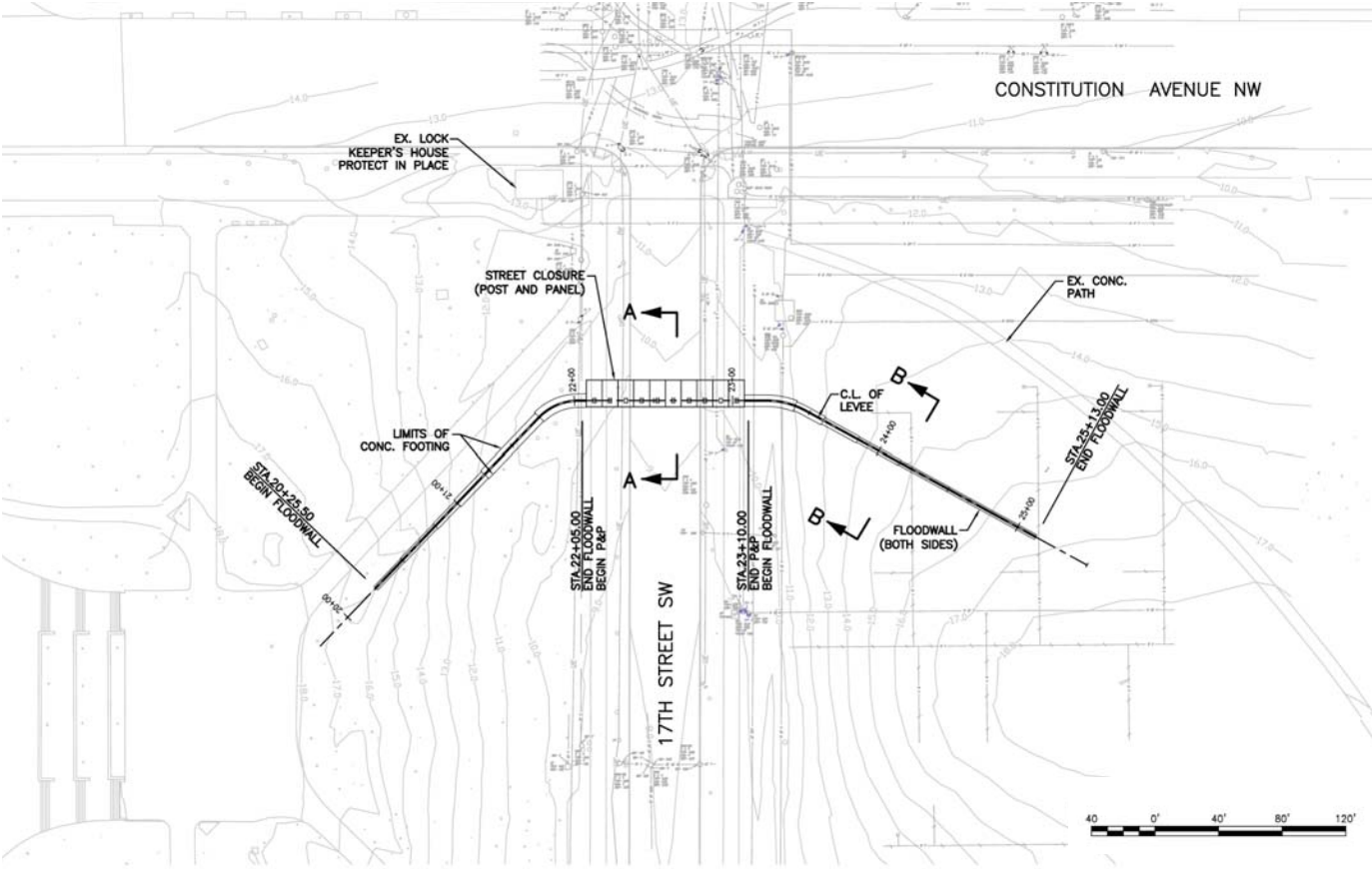
# Potomac Park<sup>1</sup>

OPTION

## Arc Wall







TETRATECH - Central Levee Location



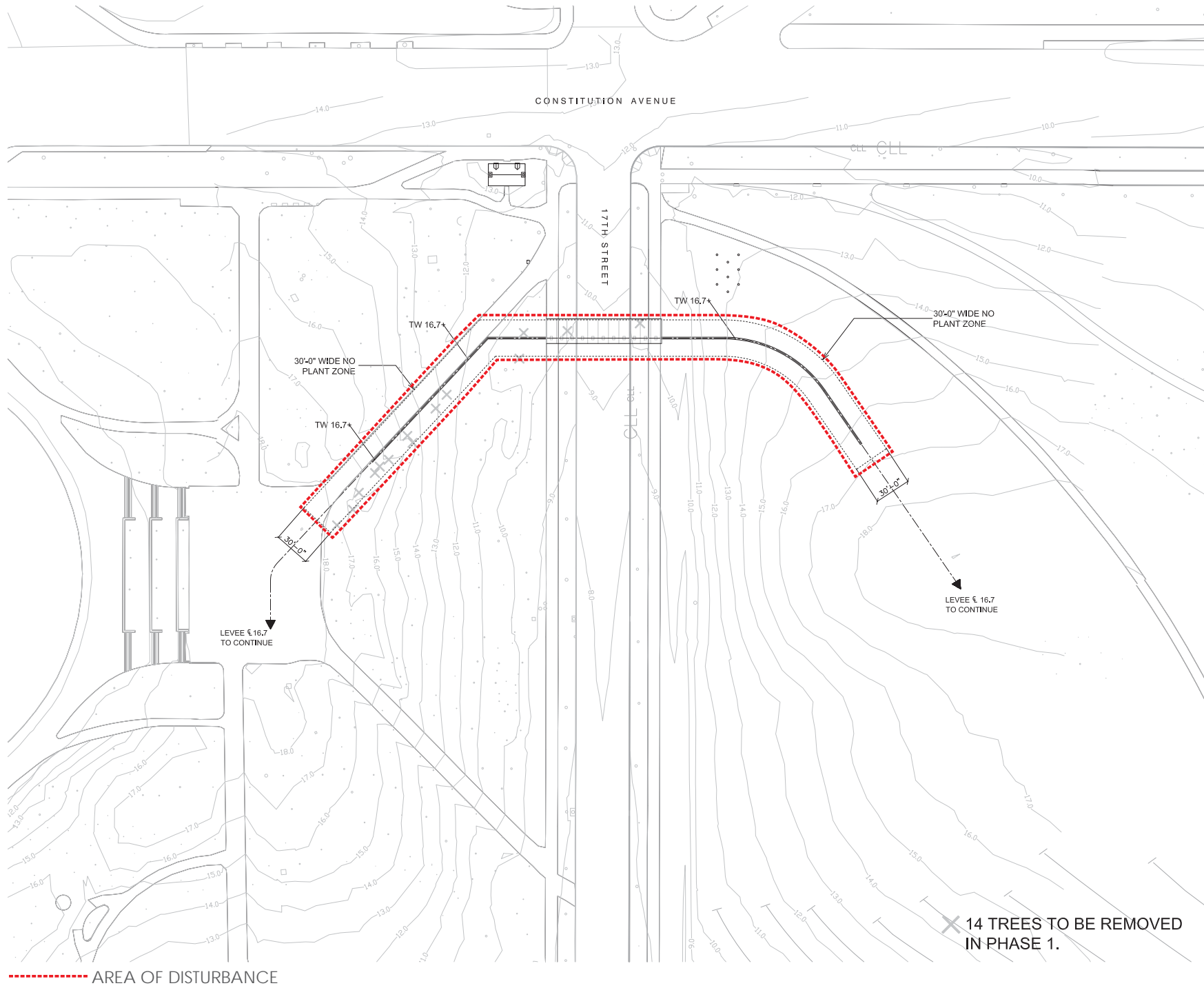
Precedent - Georgetown Canal Stone Wall



Potomac Park Levee Project

Option 1 - ARC WALL





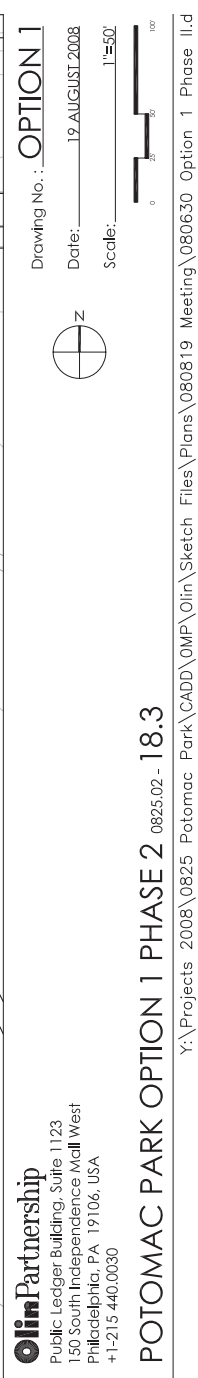
**OlinPartnership**  
 Public Ledger Building, Suite 1123  
 150 South Independence Mall West  
 Philadelphia, PA 19106, USA  
 +1-215 440.0030

Drawing No.: **OPTION 1**  
 Date: 19 AUGUST 2008  
 Scale: 1"=50'

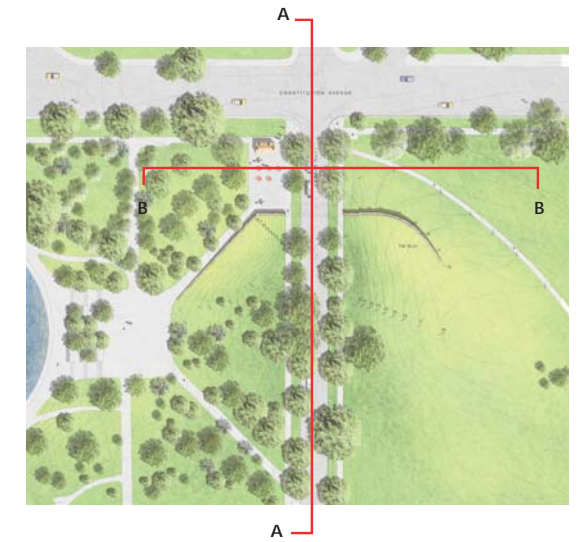
**POTOMAC PARK OPTION 1 PHASE 1 0825.02 - 16.7**

Y:\Projects\2008\0825 Potomac Park\CADD\OMP\Olin\Sketch Files\Plans\080819 Meeting\080630 Option 1 Phase 1.dwg









Section A



Section B

## Potomac Park Levee Project

Option 1 - Sections



**Olin**Partnership



AUGUST 19 2008





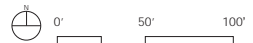
17th Street Looking South



17th Street Looking South

Potomac Park Levee Project

Option 1 - ARC WALL Perspective Sketch

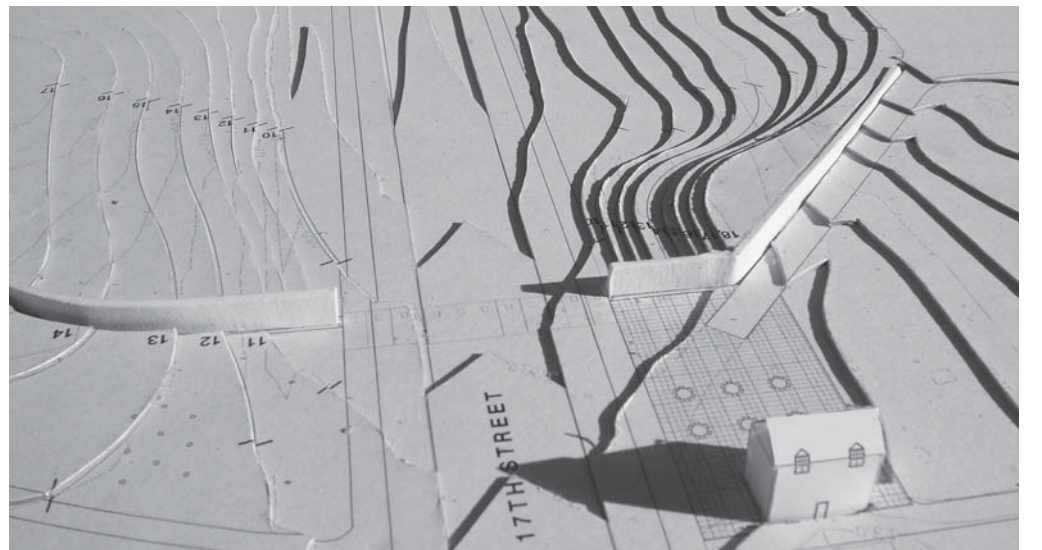
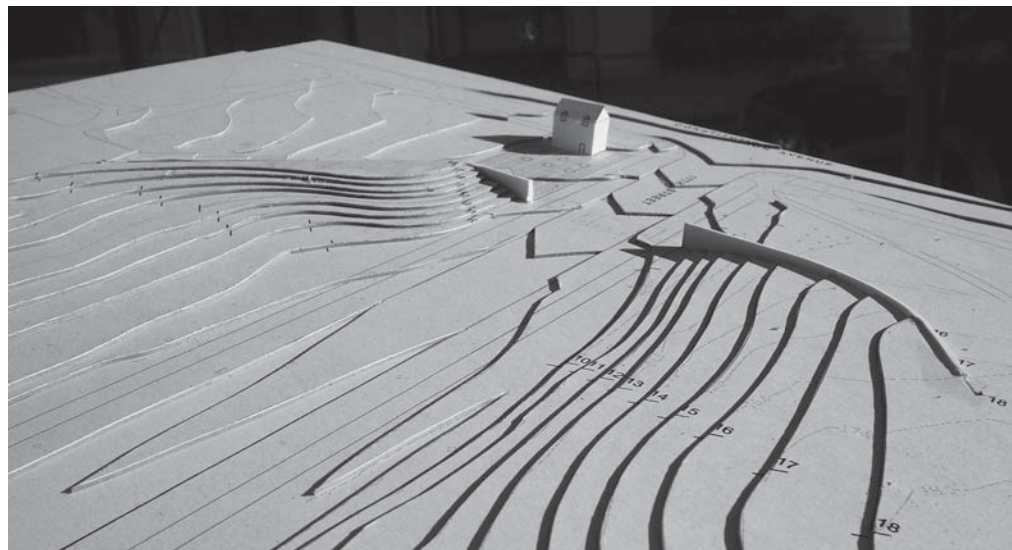
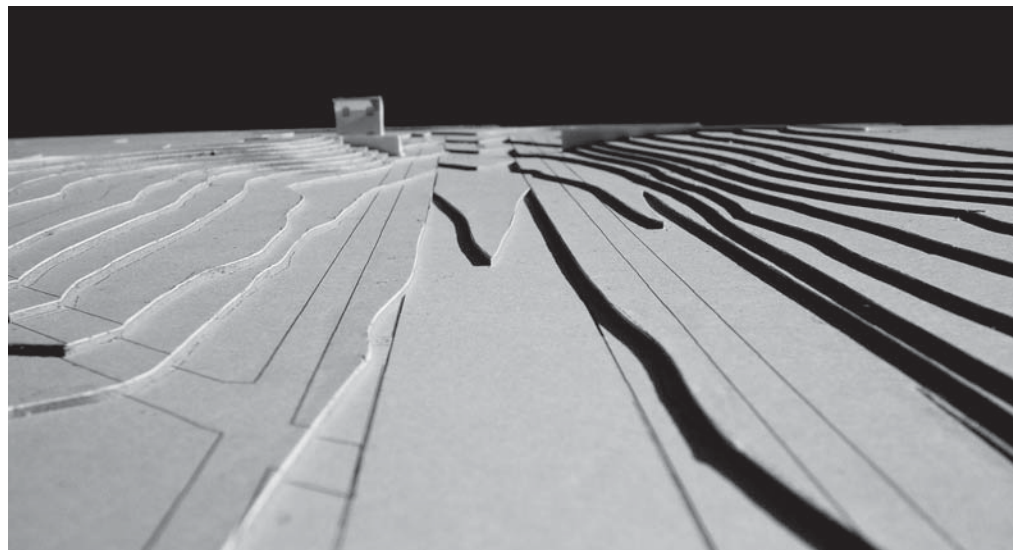
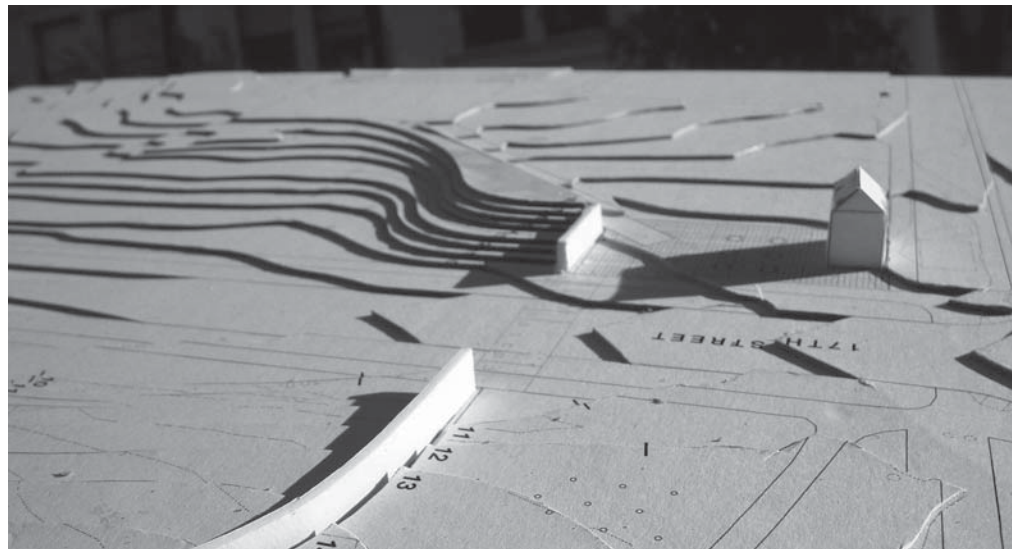
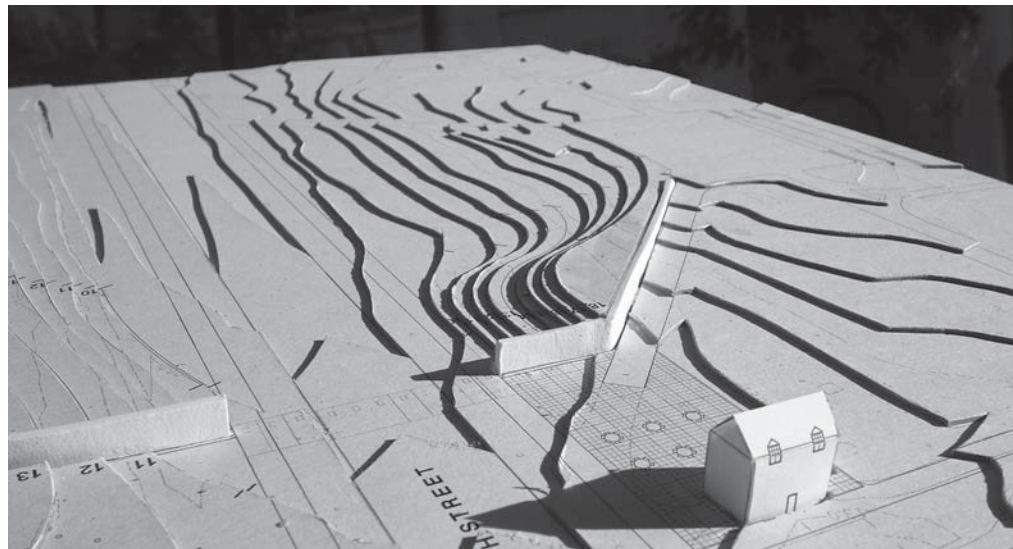
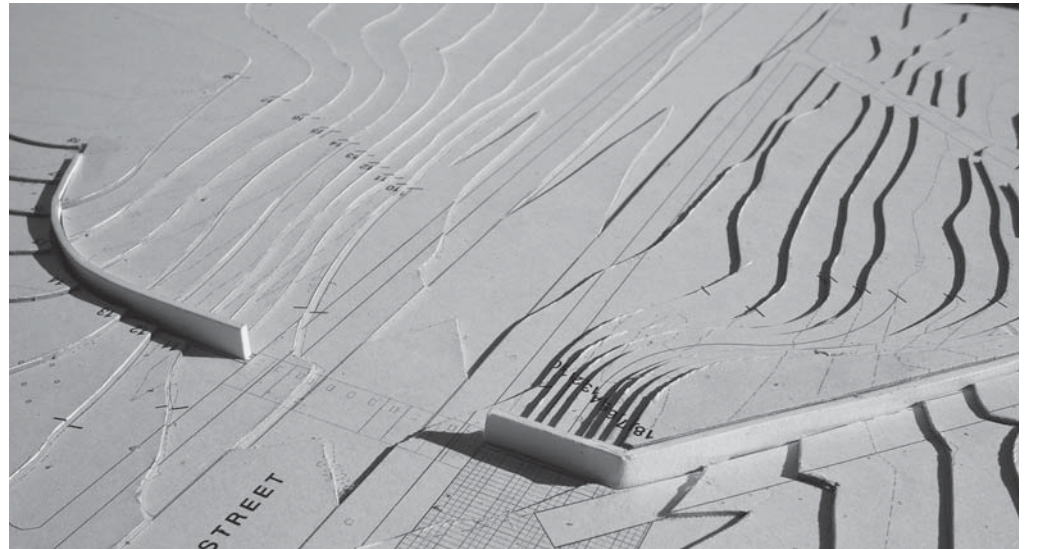
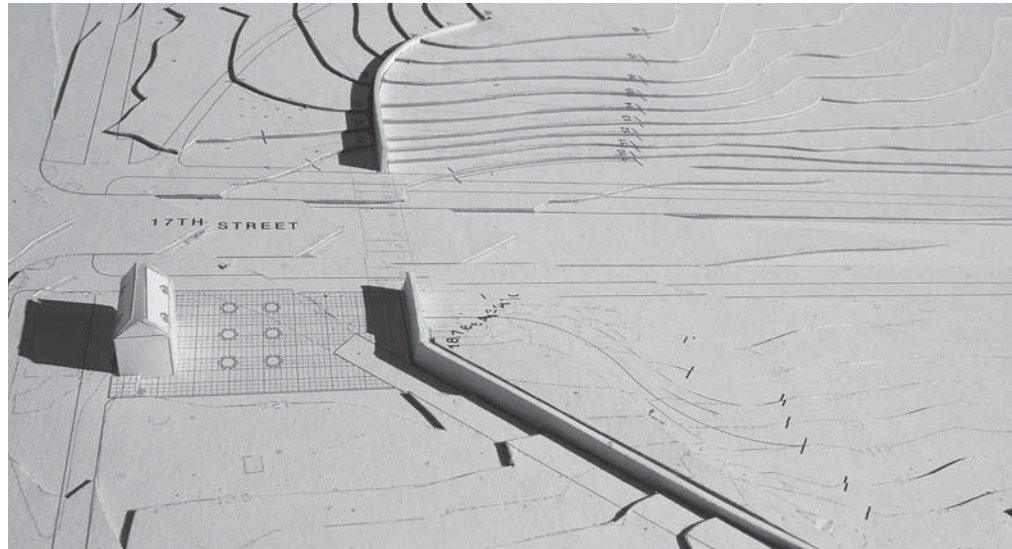
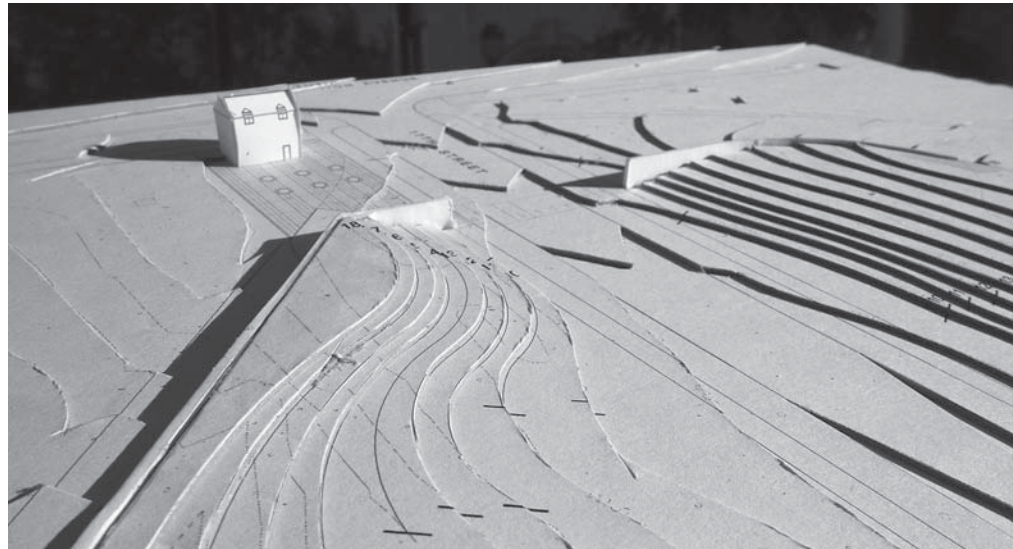


OlinPartnership



AUGUST 19 2008





## Potomac Park Levee Project

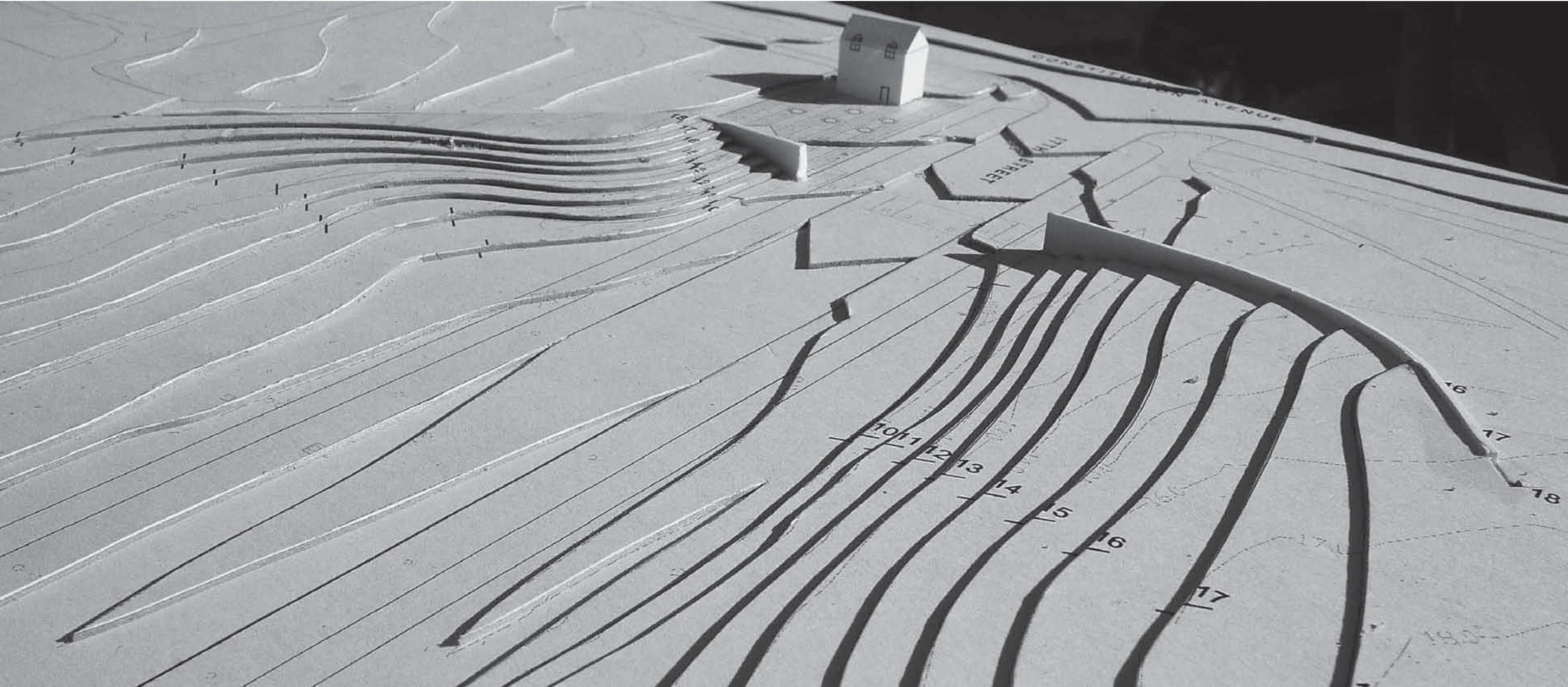
Option 1 - ARC WALL - Model Photos

**Olin**Partnership



AUGUST 19 2008











# Potomac Park

OPTION **2A**

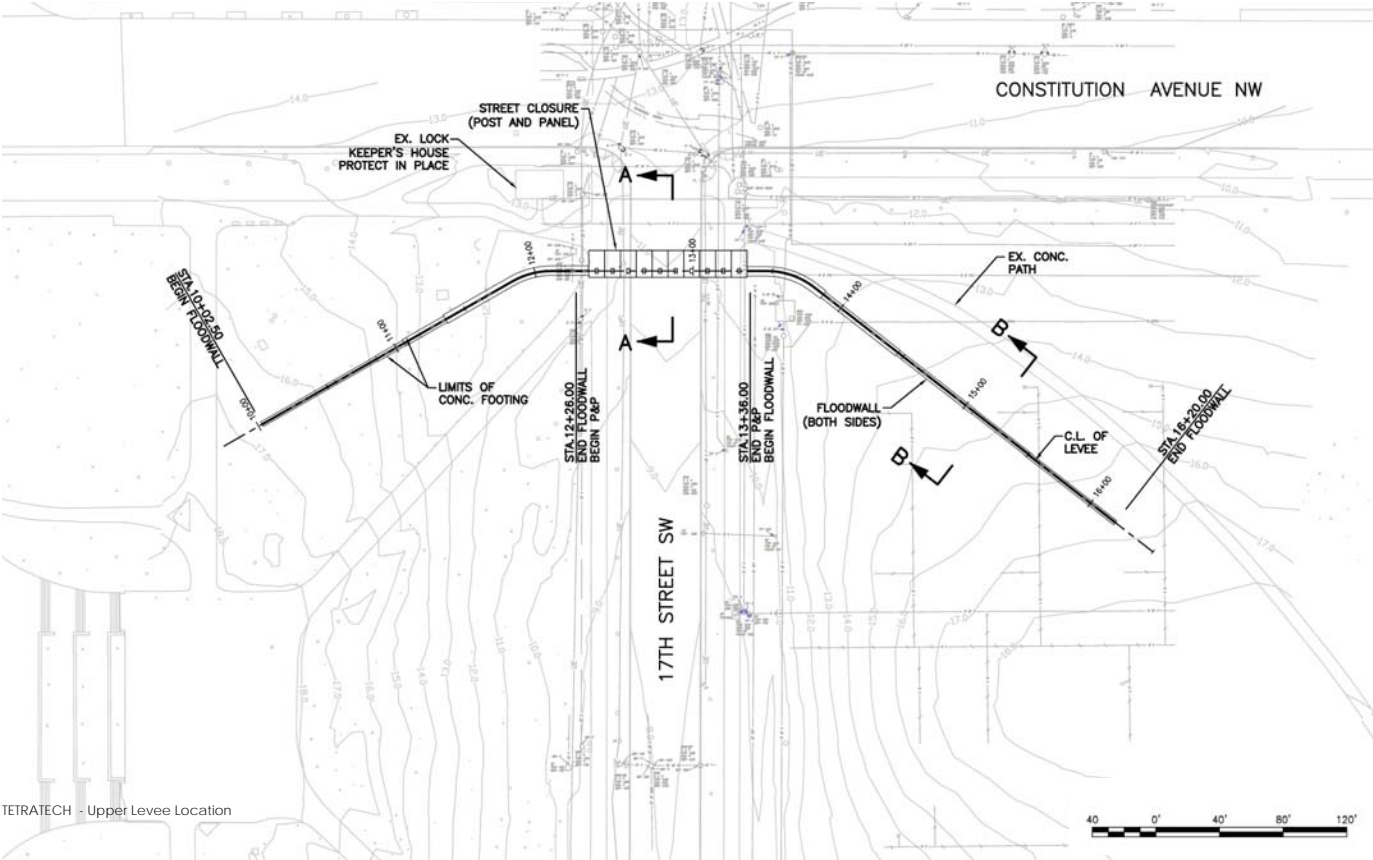
## Asymmetric Gate Walls











Lock Keeper's House at Constitution Avenue and 17th Street



Bullfinch Gatehouse at Constitution Avenue and 17th Street



Potomac Park Levee Project

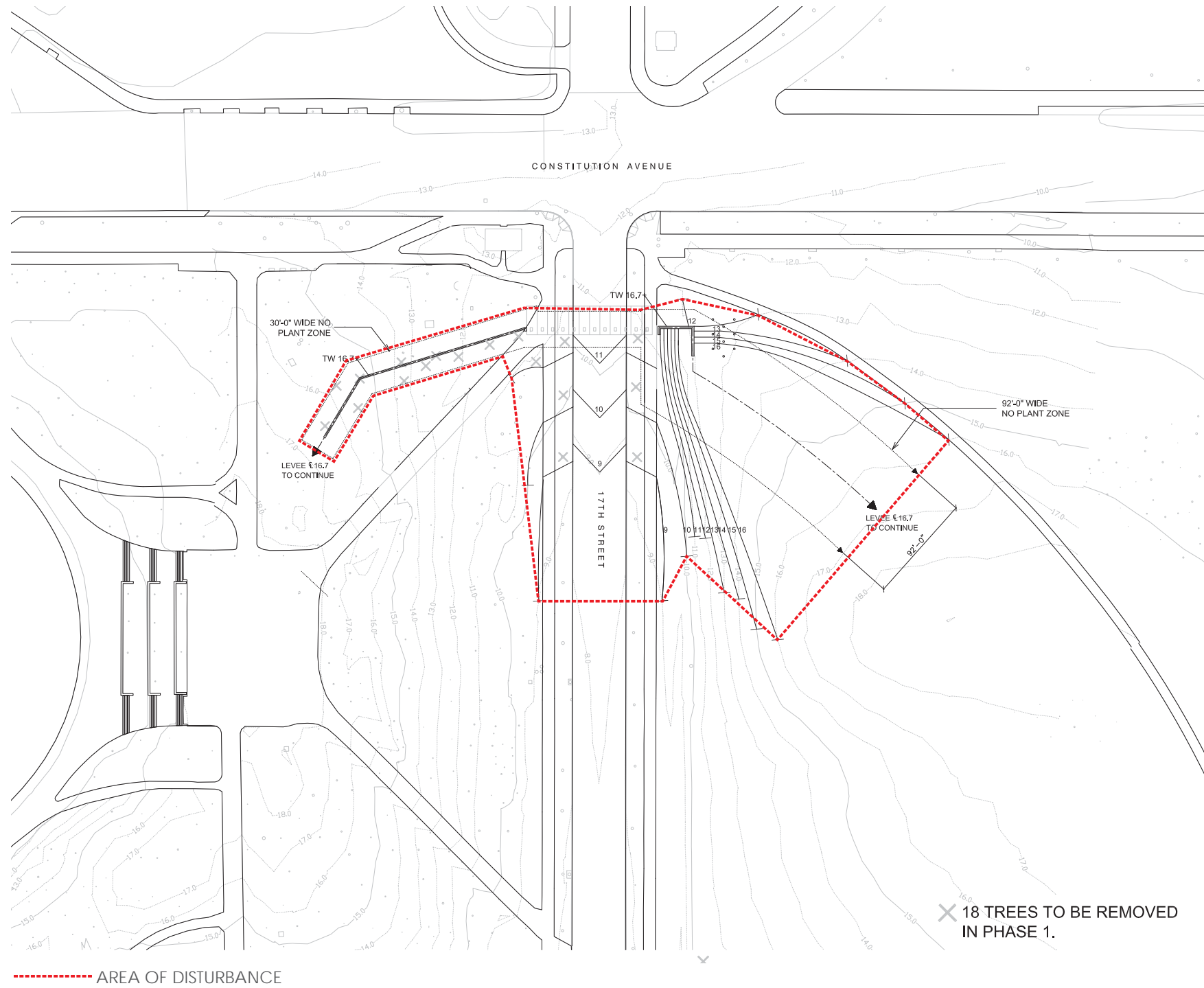
Option 2A - GATE WALLS ASYMMETRIC

OlinPartnership



AUGUST 19 2008





**OlinPartnership**  
Public Ledger Building, Suite 1123  
150 South Independence Mall West  
Philadelphia, PA 19106, USA  
+1-215 440.0030

**POTOMAC PARK OPTION 2A PHASE 1** 0825.02 - 16.7

Drawing No. **OPTION 2A**  
Date: 19 AUGUST 2008  
Scale: 1"=50'

Y:\Projects 2008\0825 Potomac Park\CADD\OMP\Olin\Sketch Plans\Option 2A Phase 1.dwg

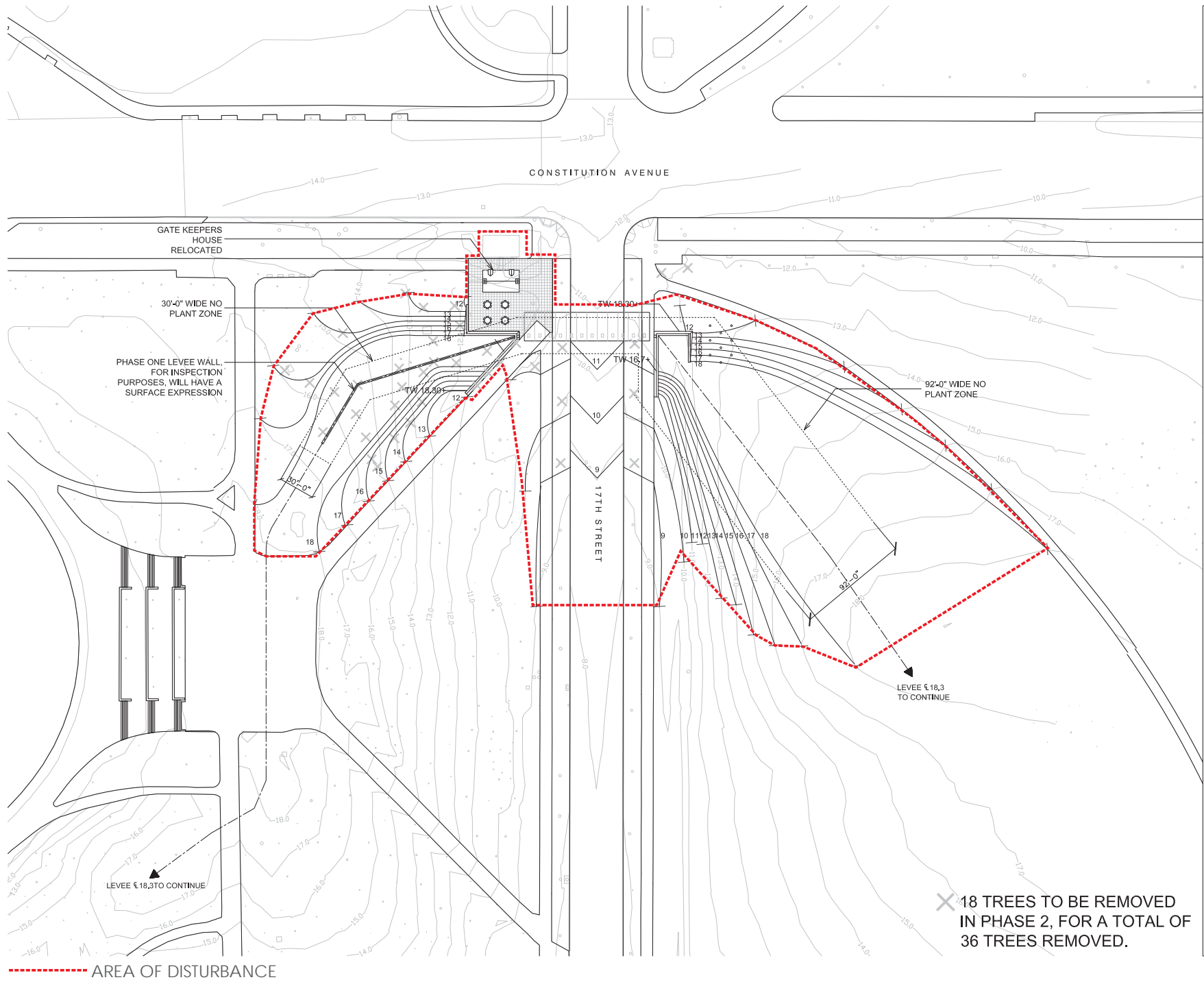
Potomac Park Levee Project

Option 2A - Phase 1 - GATE WALLS ASYMMETRIC



AUGUST 19 2008





**OlinPartnership**  
Public Ledger Building, Suite 1123  
150 South Independence Mall West  
Philadelphia, PA 19106, USA  
+1-215 440.0030

**POTOMAC PARK OPTION 2A PHASE 2 0825 02 - 18.3**

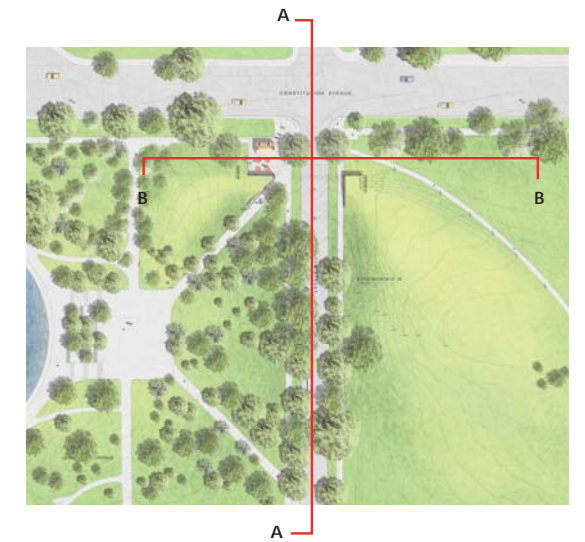
Y:\Projects 2008\0825 Potomac Park\CADD\OMP\Olin\Sketch Files\Plans\080819 Meeting\080630 Option 2A Phase II.dwg

Drawing No. **OPTION 2A**  
Date: 19 AUGUST 2008  
Scale: 1"=50'

North Arrow







Section A



Section B

## Potomac Park Levee Project

Option 2A - Sections



**Olin**Partnership



AUGUST 19 2008





17th Street Looking South at Constitution Avenue



17th Street Looking South at Constitution Avenue





Aerial Oblique - Post and Panel Down



Aerial Oblique - Post and Panel in Place



Street View East Along Constitution Avenue



Street View West Along Constitution Avenue



Street View East Along Constitution Avenue



Street View East Along Constitution Avenue



Street View West Along Constitution Avenue



View North-East Along 17th Street



Street View North Along 17th Street

## Potomac Park Levee Project

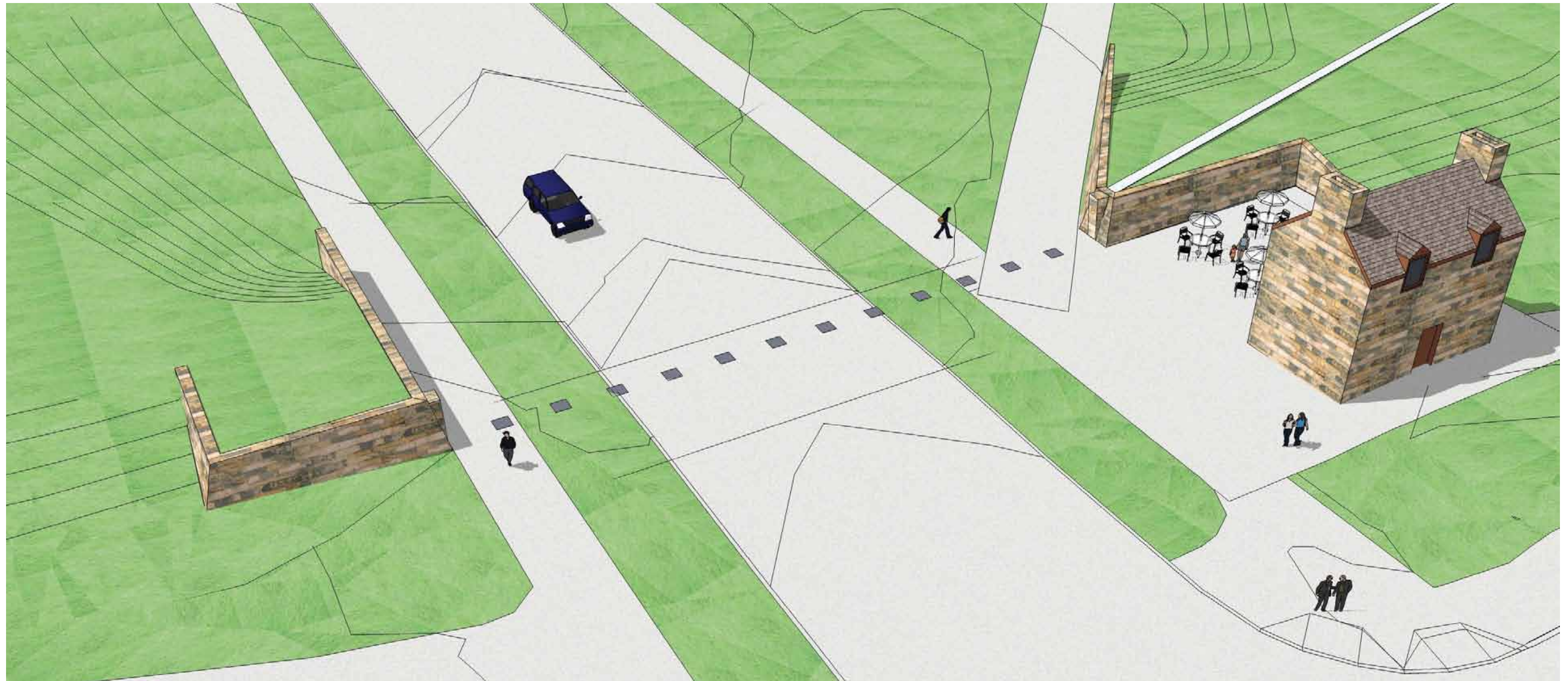
Option 2A - Perspectives

OlinPartnership



AUGUST 19 2008





Aerial Oblique - Post and Panel Down

## Potomac Park Levee Project

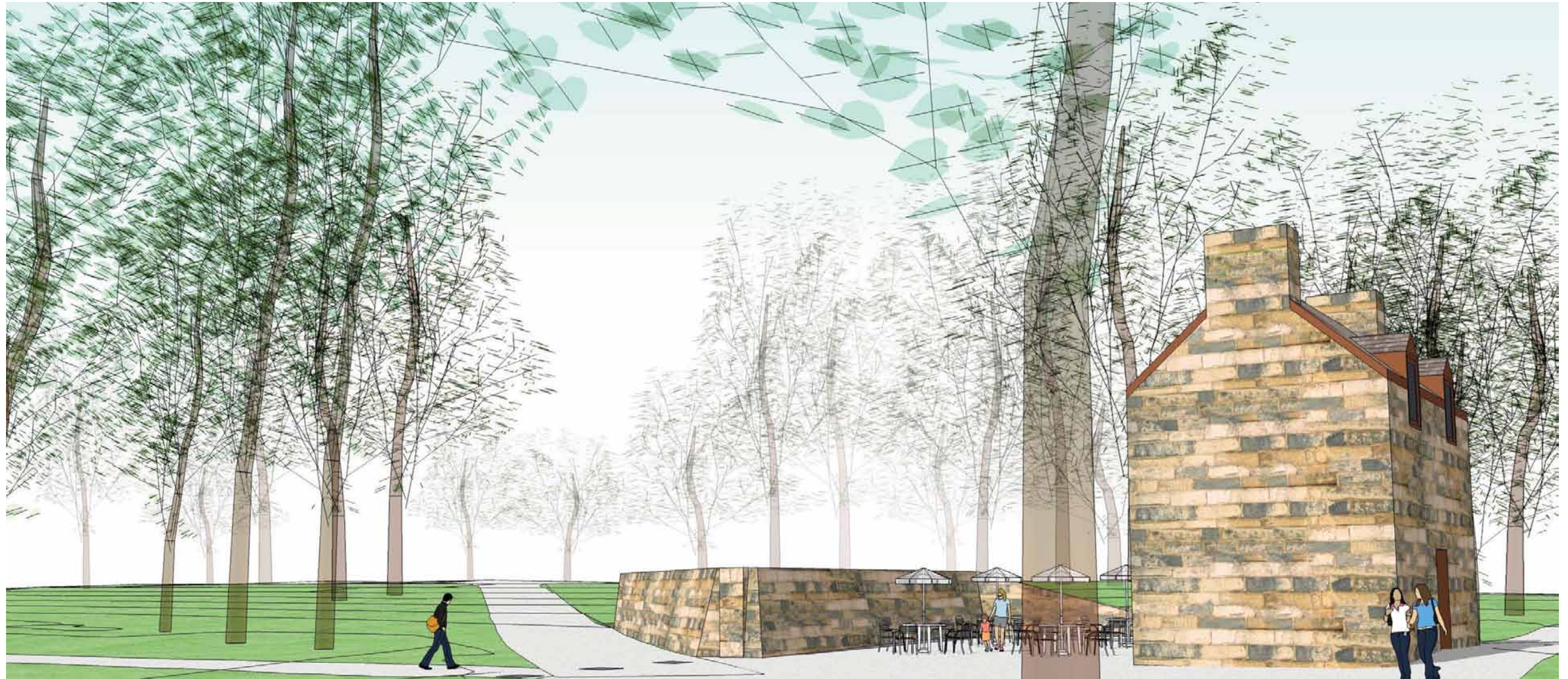
Option 2A - Perspective

**Olin**Partnership



AUGUST 19 2008





## Potomac Park Levee Project

Option 2A - Perspective

**Olin**Partnership



AUGUST 19 2008





## Potomac Park Levee Project

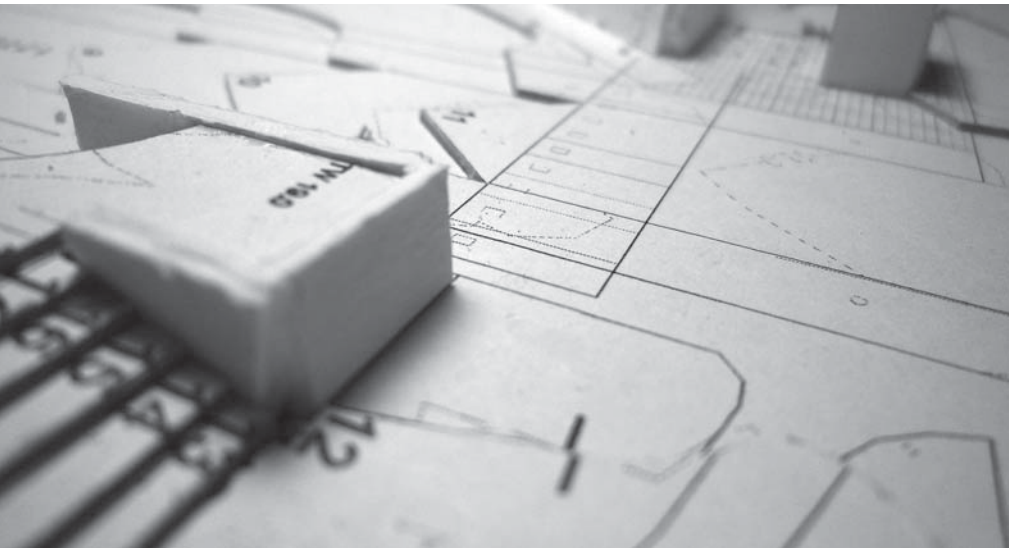
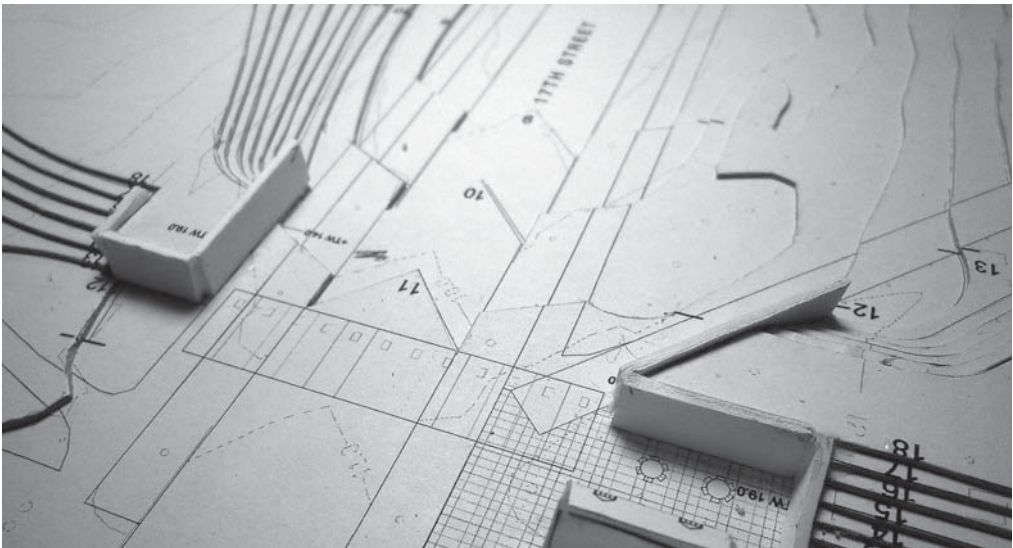
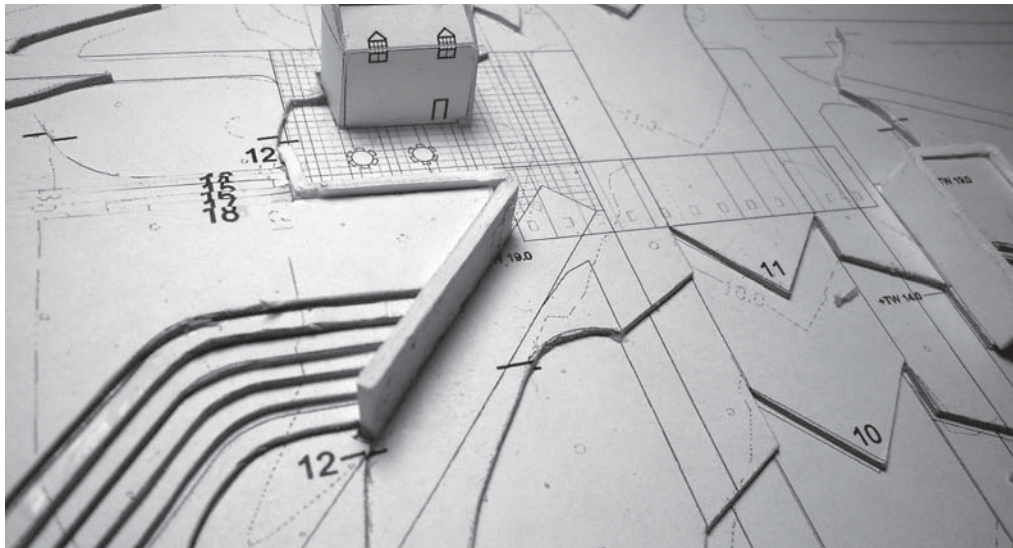
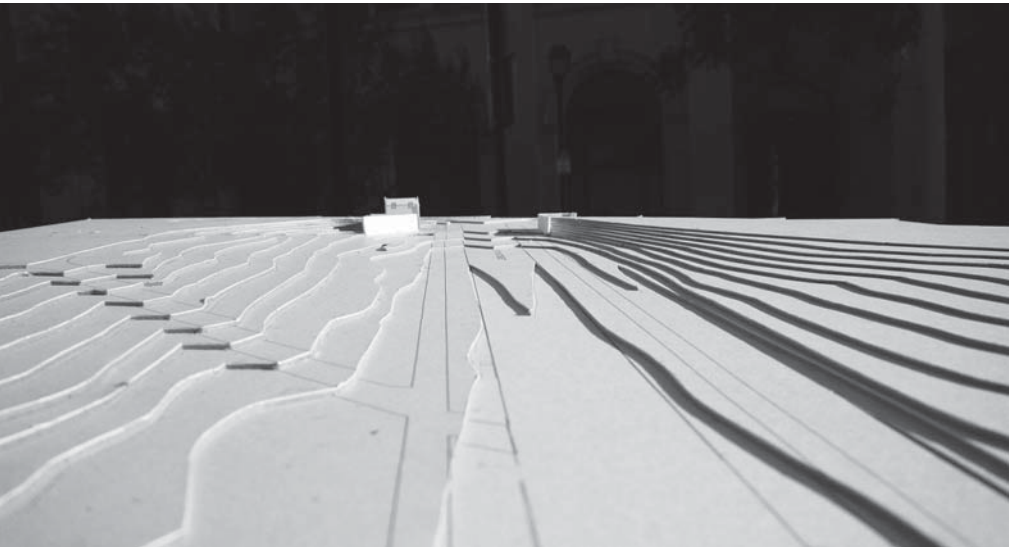
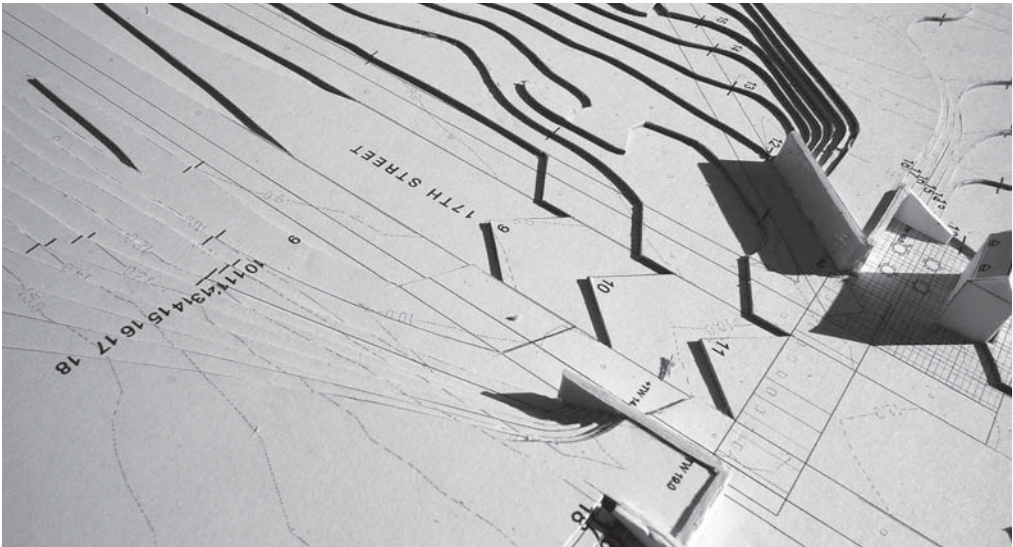
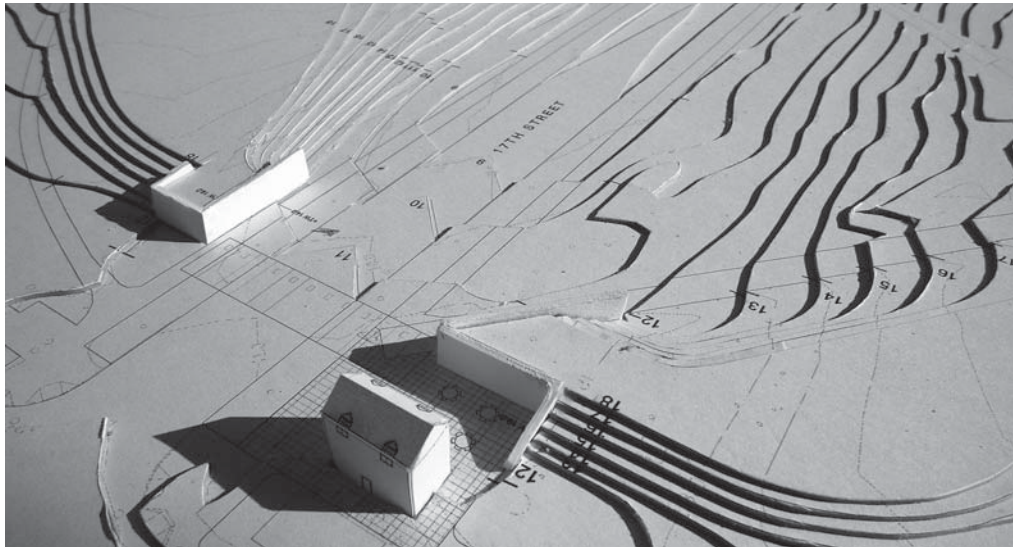
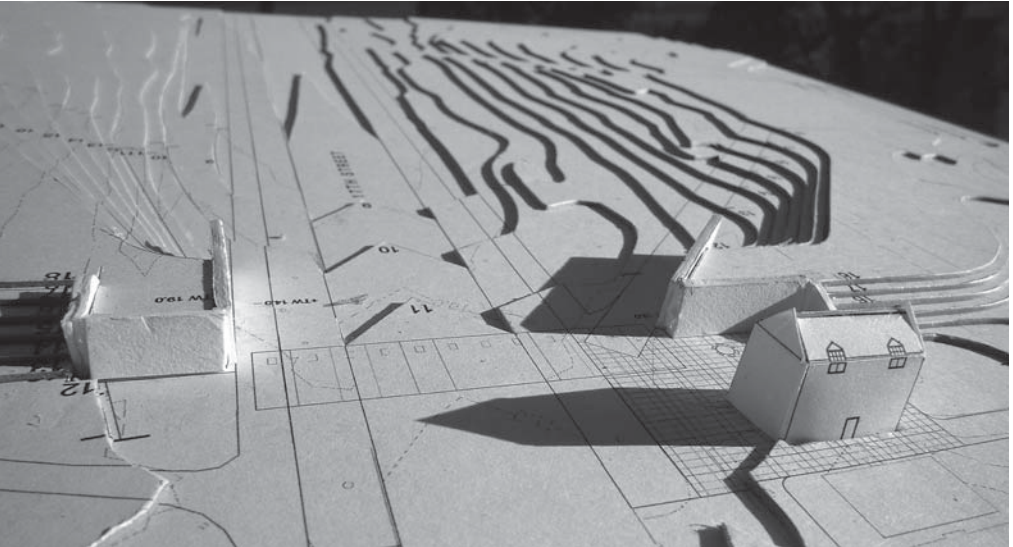
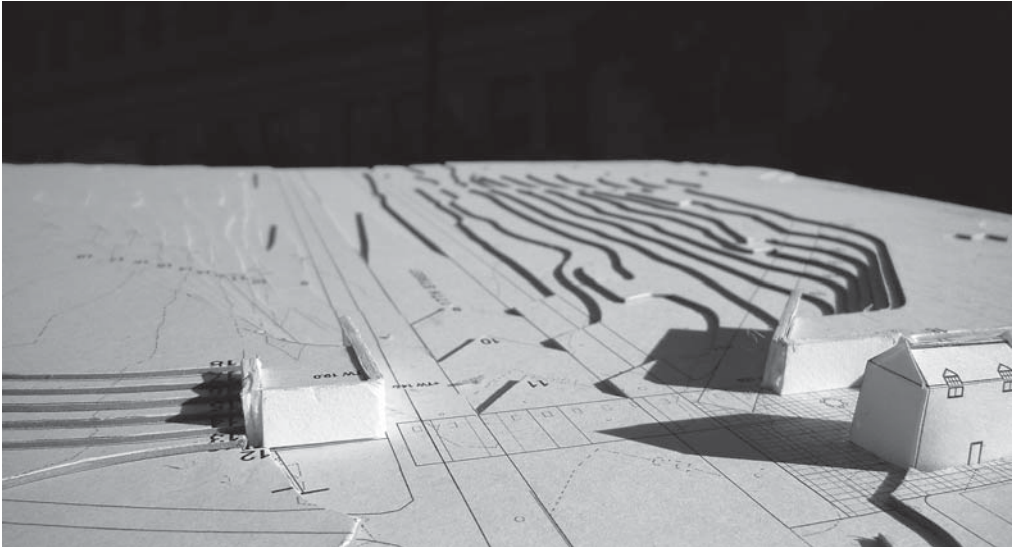
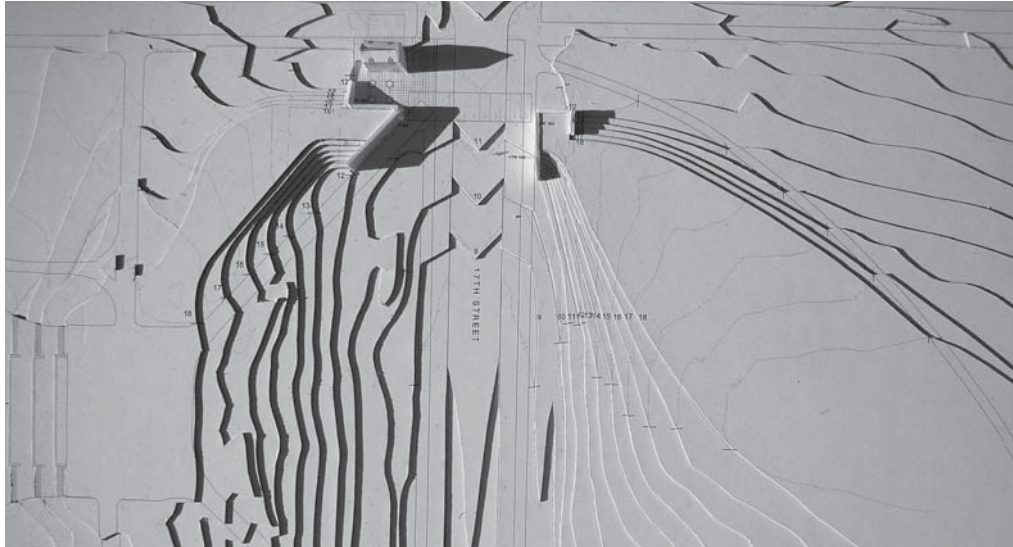
Option 2A - Plan Rendering

**Olin**Partnership



AUGUST 19 2008





Potomac Park Levee Project

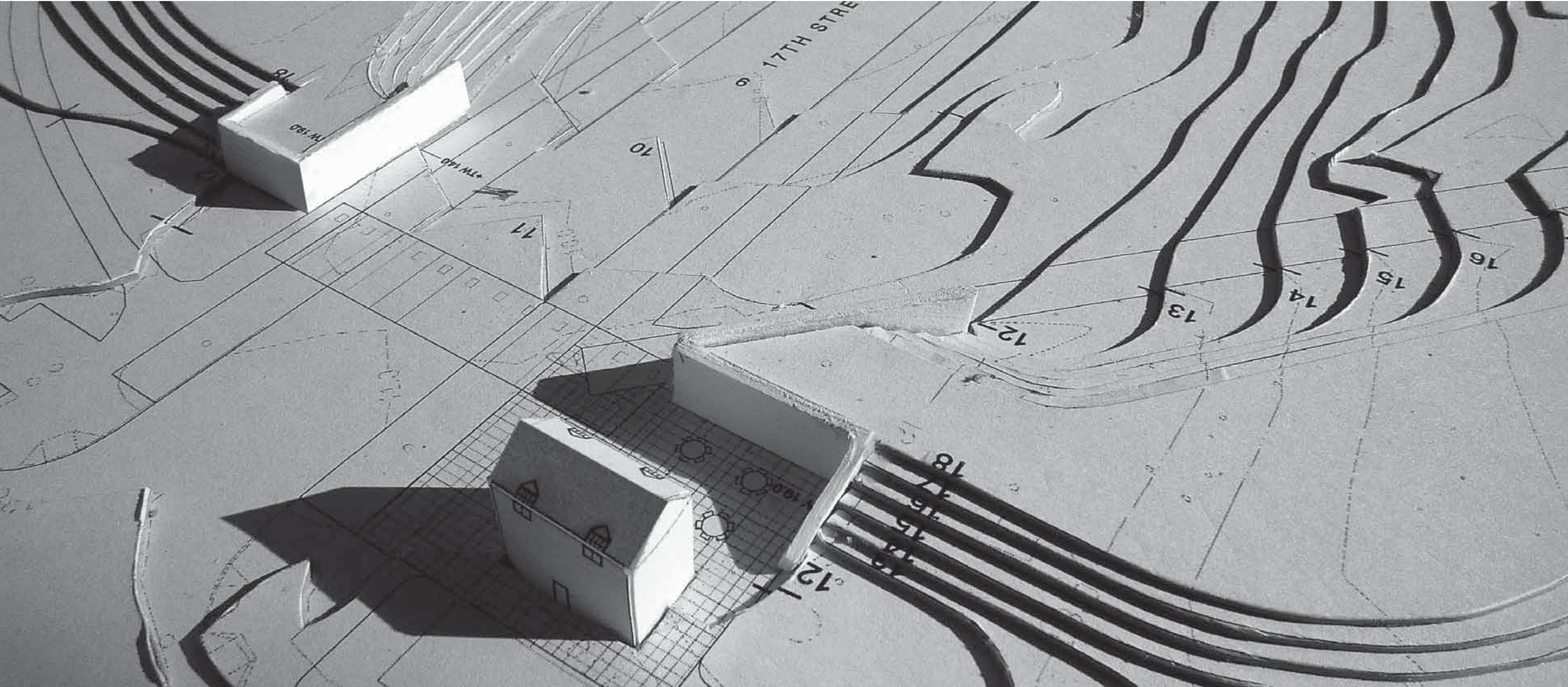
Option 2A - Model Photos

OlinPartnership



AUGUST 19 2008











# Potomac Park

OPTION 2B

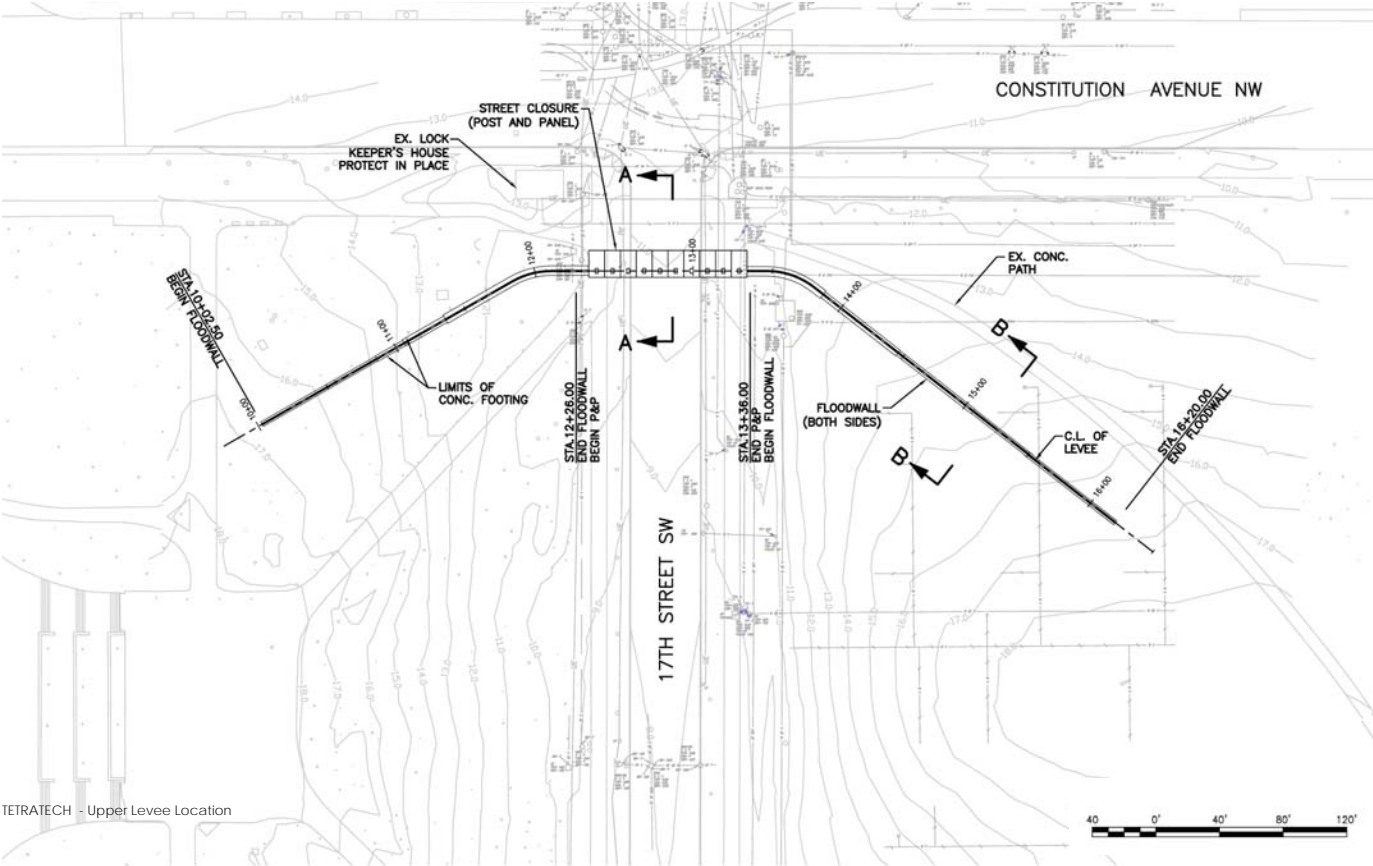
## Symmetric Gate Walls











Lock Keeper's House at Constitution Avenue and 17th Street



Bullfinch Gatehouse at Constitution Avenue and 17th Street



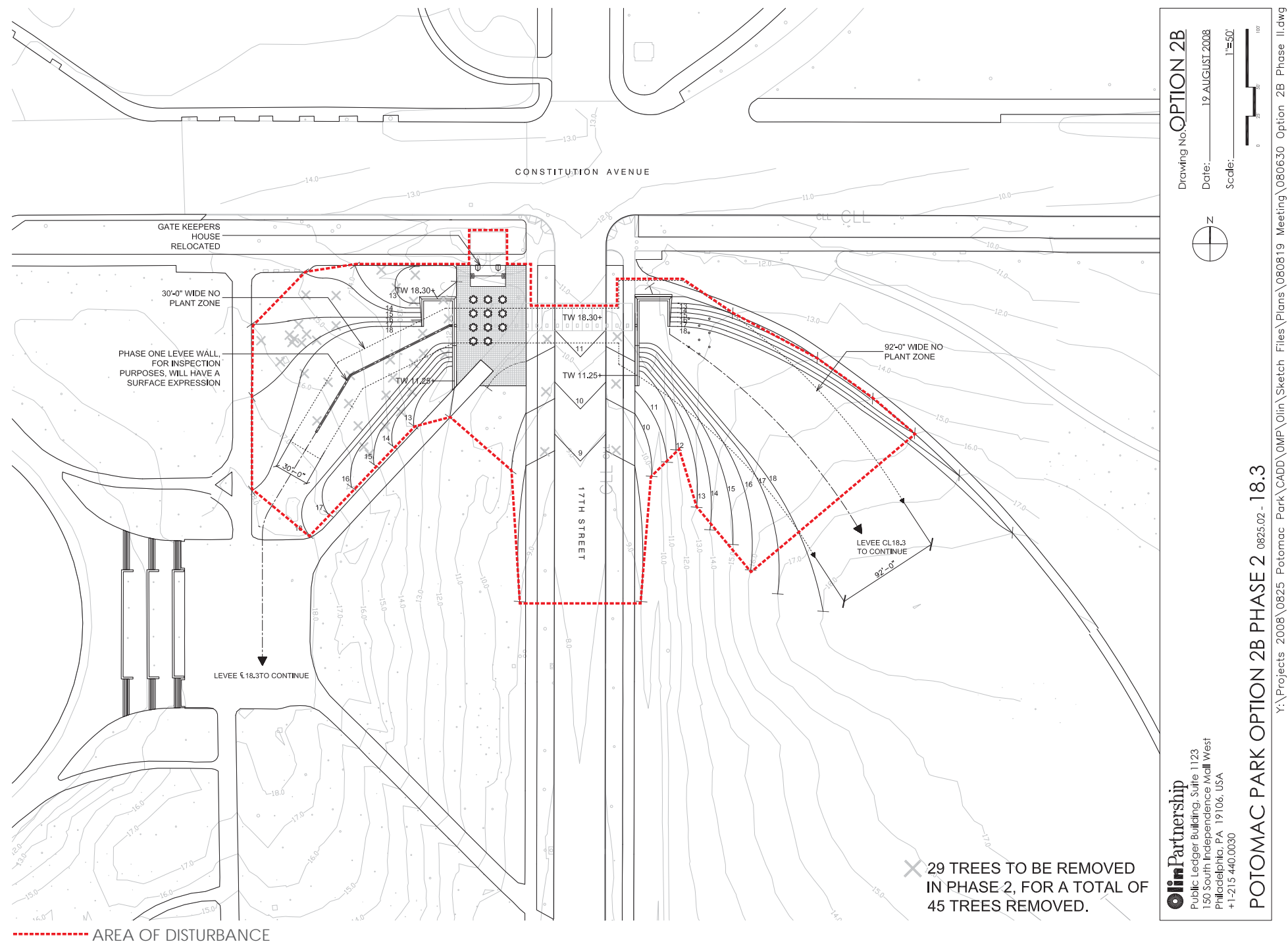
Potomac Park Levee Project

Option 2B - SYMMETRIC GATE WALLS

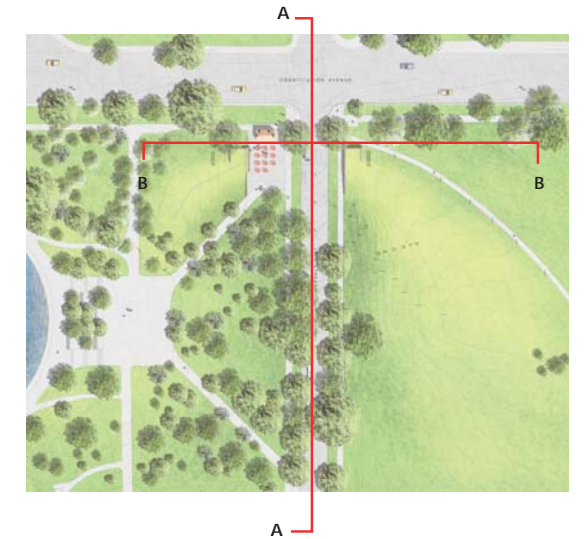




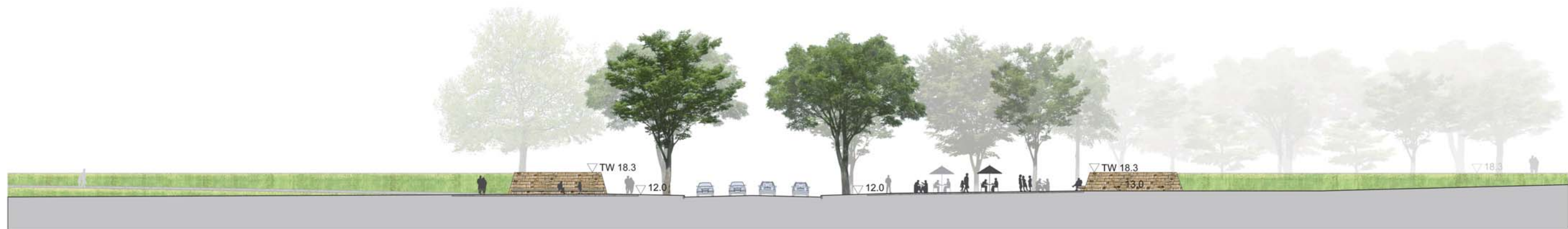








Section A



Section B

## Potomac Park Levee Project

Option 2B - Sections



OlinPartnership



AUGUST 19 2008





Aerial Oblique - Post and Panel Down



Aerial Oblique - Post and Panel in Place



Street View East Along Constitution Avenue



Street View West Along Constitution Avenue



View East From Within Gate Keeper Plaza



Street View East Along Constitution Avenue



Street View West Along 17th Street



View North-East Along 17th Street



Street View North Along 17th Street

## Potomac Park Levee Project

Option 2B - Perspectives

OlinPartnership



AUGUST 19 2008





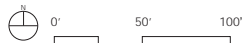
Aerial Oblique - Post and Panel Down





Potomac Park Levee Project

Option 2B - Perspective



OlinPartnership



AUGUST 19 2008











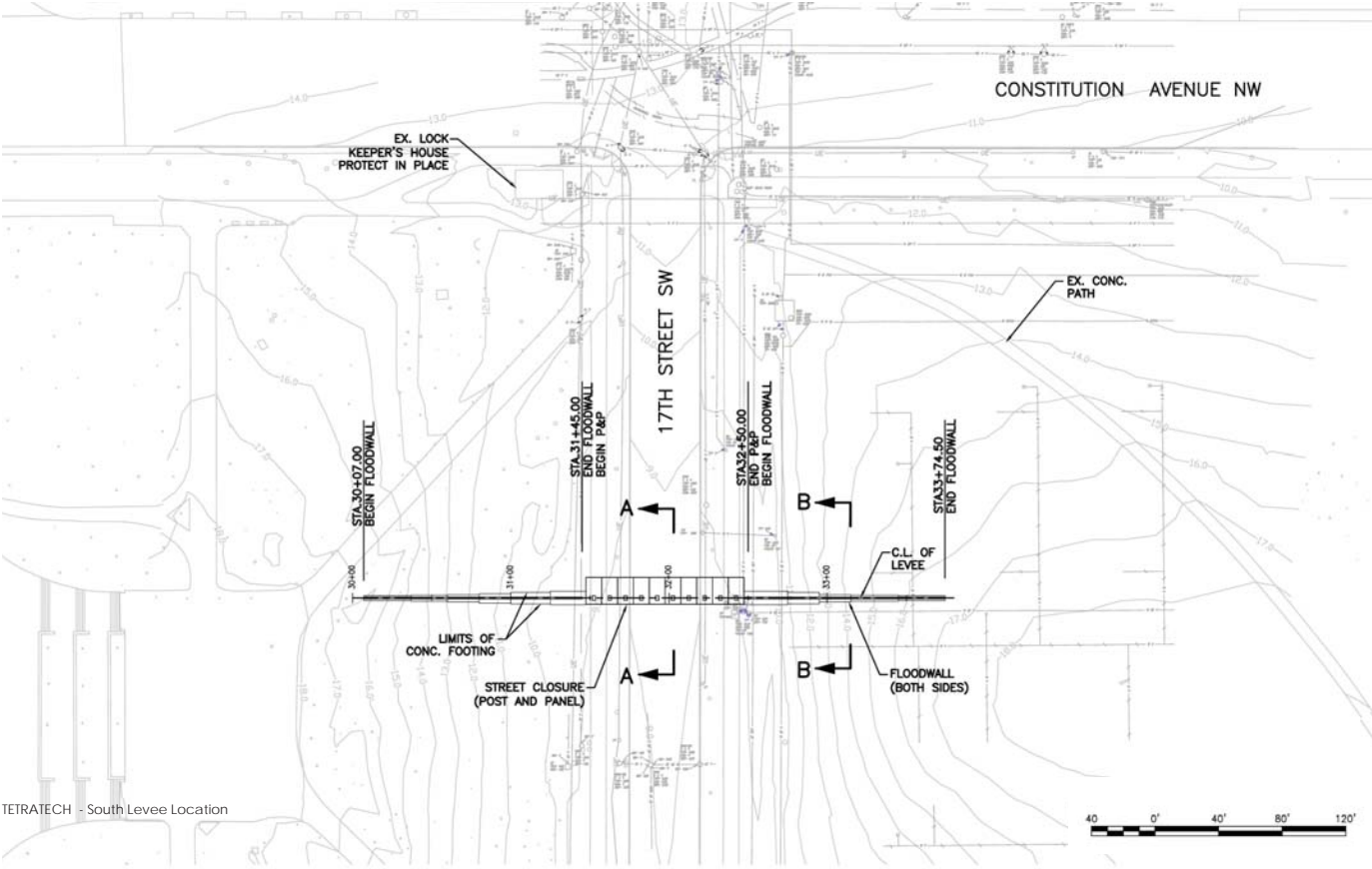
# Potomac Park 3

OPTION

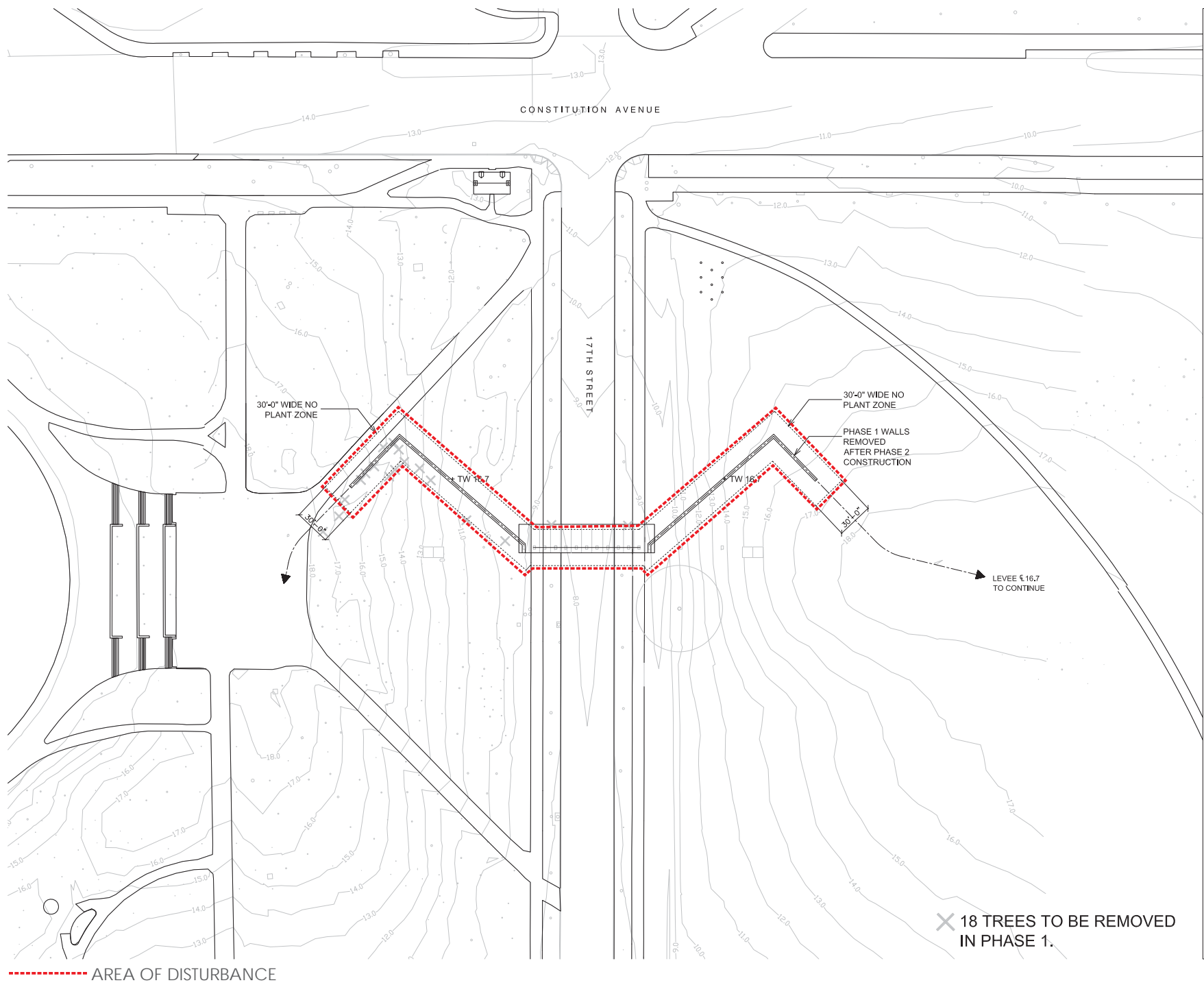
## Constitution Garden Walls











**OlinPartnership**  
Public Ledger Building, Suite 1123  
150 South Independence Mall West  
Philadelphia, PA 19106, USA  
+1-215 440.0030

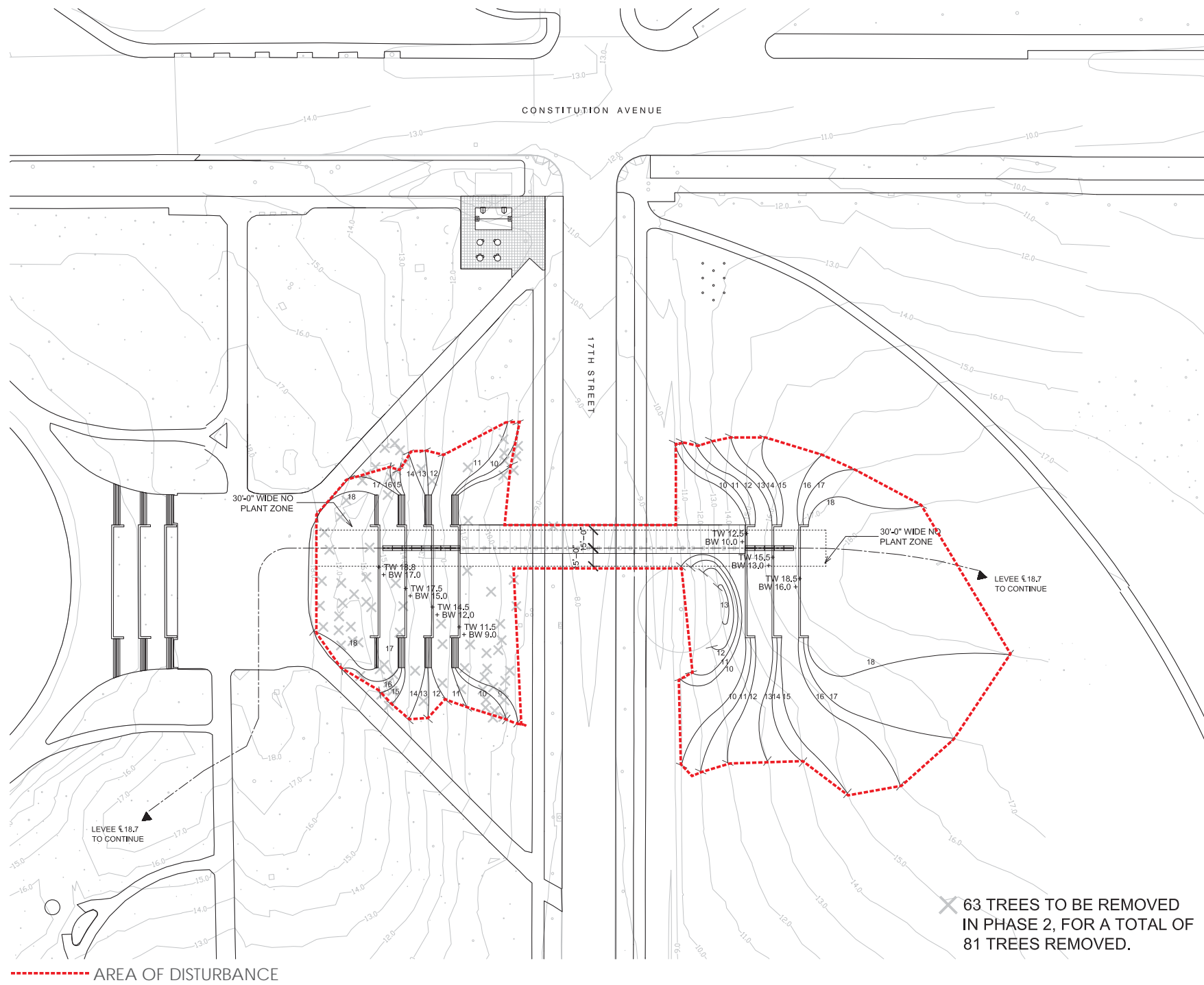
Drawing No.: **OPTION 3**  
Date: 19 AUGUST 2008  
Scale: 1"=50'

POTOMAC PARK OPTION 3 PHASE 1 0825.02 - 16.7

Y:\Projects 2008\0825 Potomac Park\CADD\OMP\Olin\Sketch Files\Plans\Option 3 Phase 1.dwg







**OlinPartnership**  
Public Ledger Building, Suite 1123  
150 South Independence Mall West  
Philadelphia, PA 19106, USA  
+1-215 440.0030

Drawing No.: **OPTION 3**  
Date: 19 AUGUST 2008  
Scale: 1"=50'

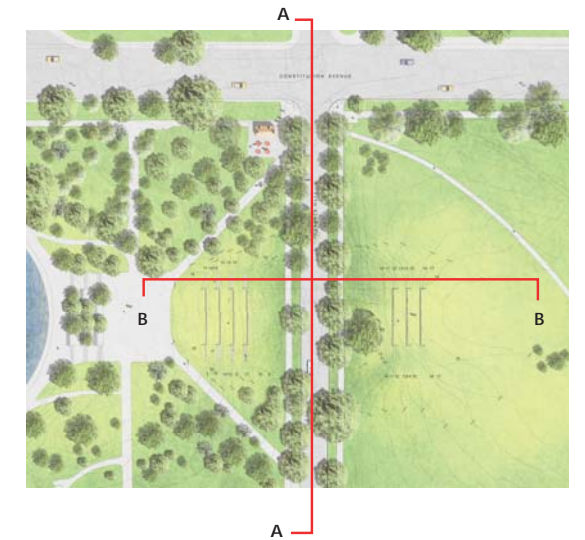
**POTOMAC PARK OPTION 3 PHASE 2 0825.02 - 18.3**

Y:\Projects 2008\0825 Potomac Park\CADD\OMP\Olin\Sketch Files\Plans\Option 3 Phase 2.dwg

63 TREES TO BE REMOVED  
IN PHASE 2, FOR A TOTAL OF  
81 TREES REMOVED.







Section A



Section B

## Potomac Park Levee Project

Option 3 - Phase 2 Sections



OlinPartnership



AUGUST 19 2008





17th Street Looking South at Constitution Avenue



17th Street Looking South at Constitution Avenue

## Potomac Park Levee Project

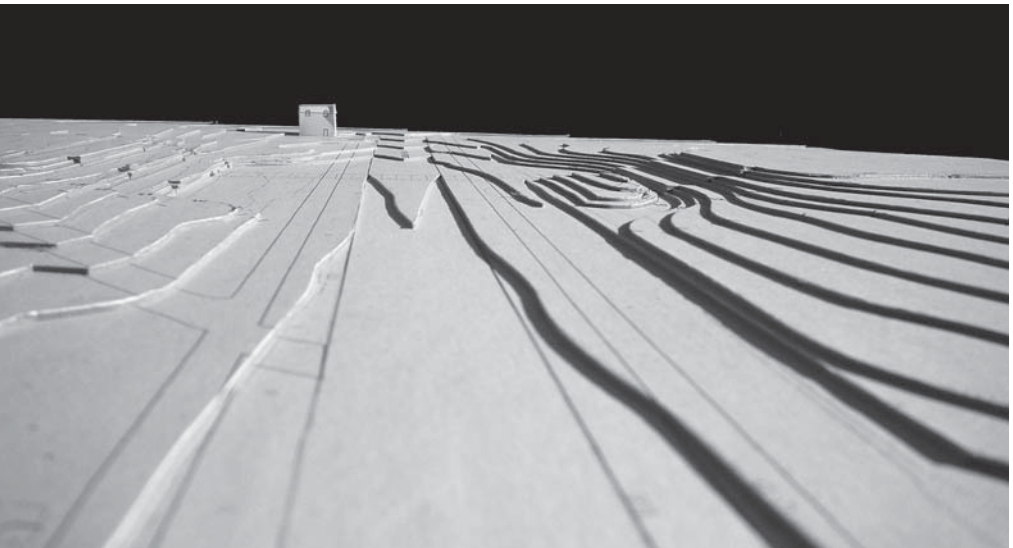
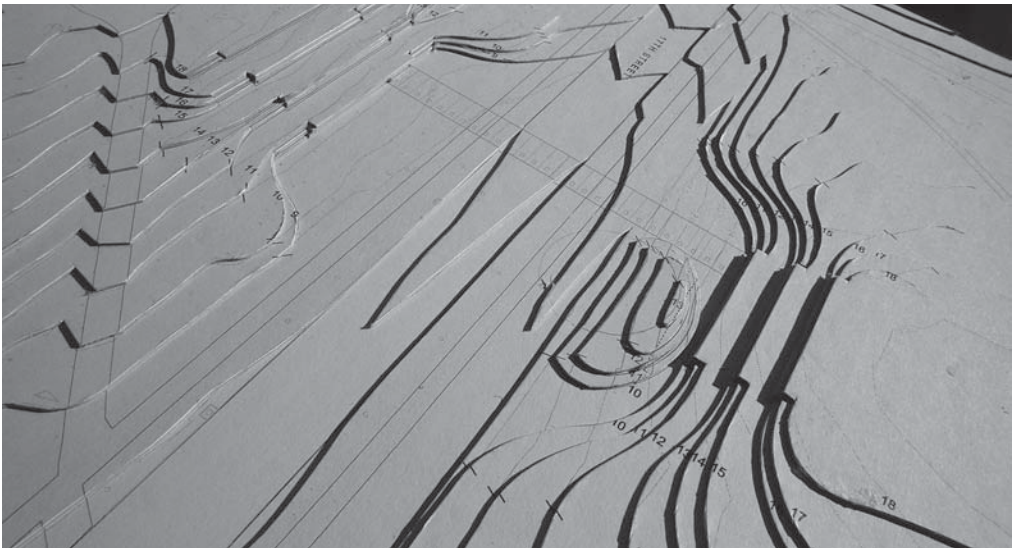
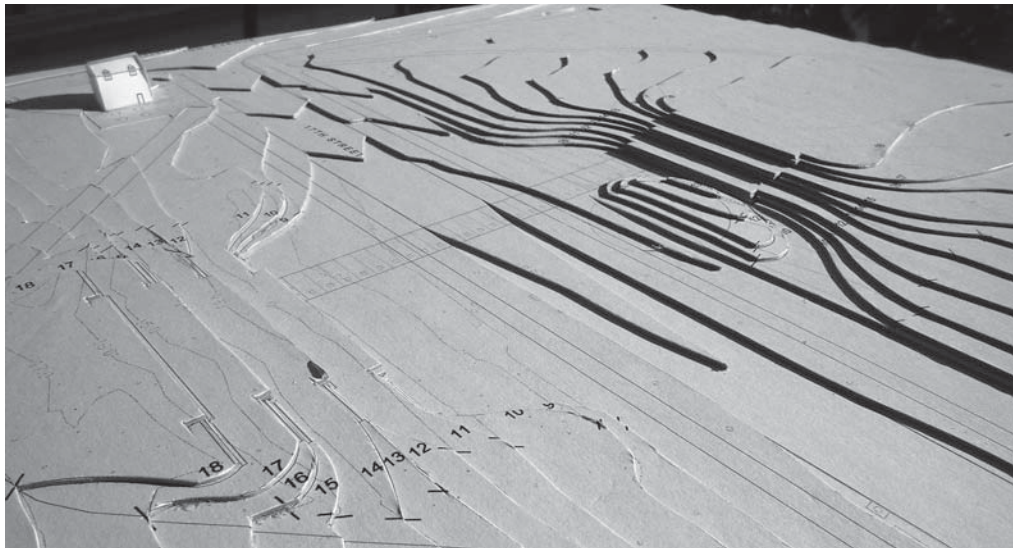
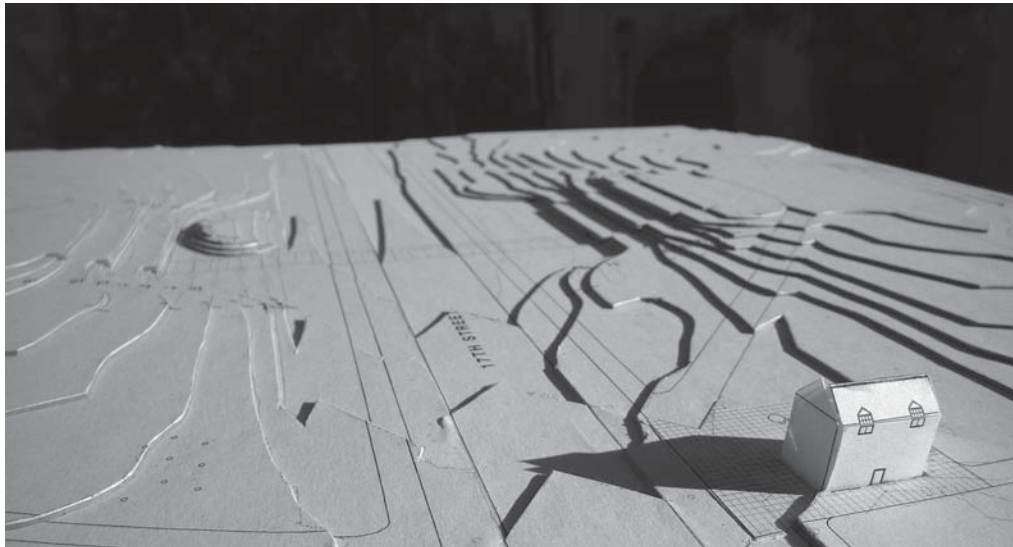
Option 3 - CONSTITUTION GARDEN WALLS Perspective Sketch

**Olin**Partnership



AUGUST 19 2008





Potomac Park Levee Project

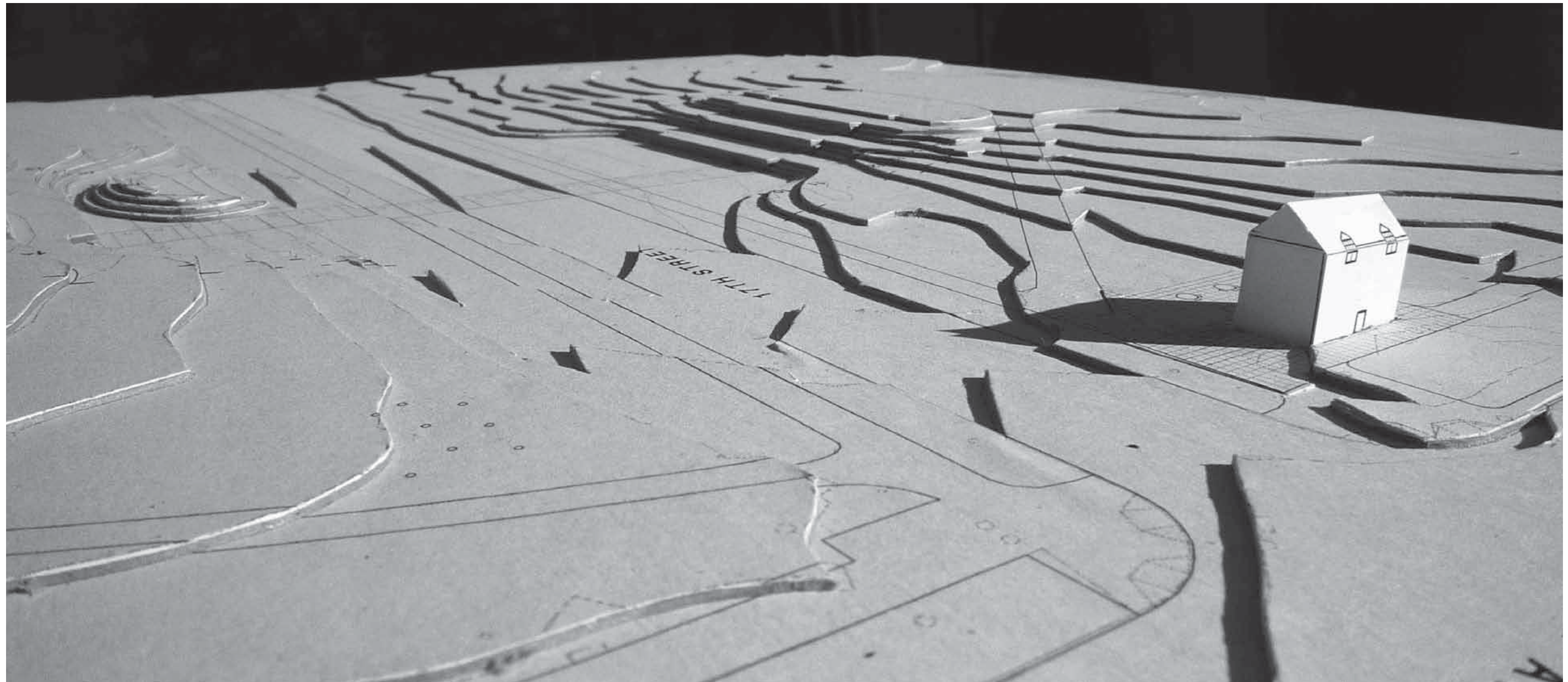
Option 3 - Model Photos

OlinPartnership



AUGUST 19 2008





## Potomac Park Levee Project

Option 3 - Model Photos

**Olin**Partnership



AUGUST 19 2008







# Potomac Park 4

OPTION

## Land Bridge





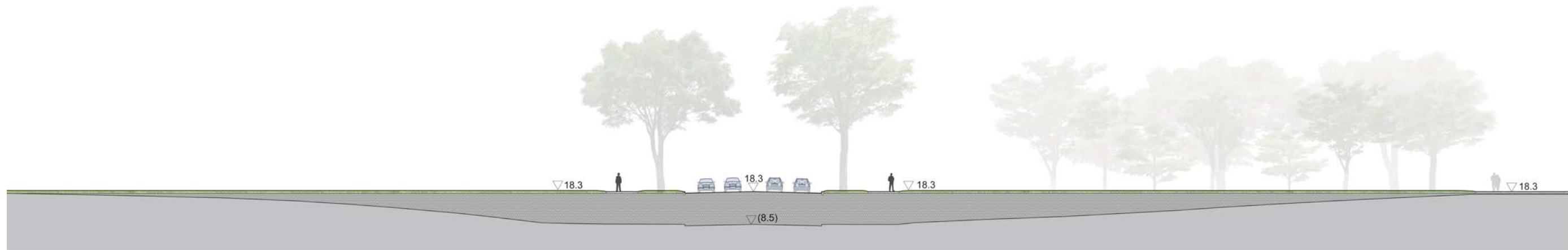
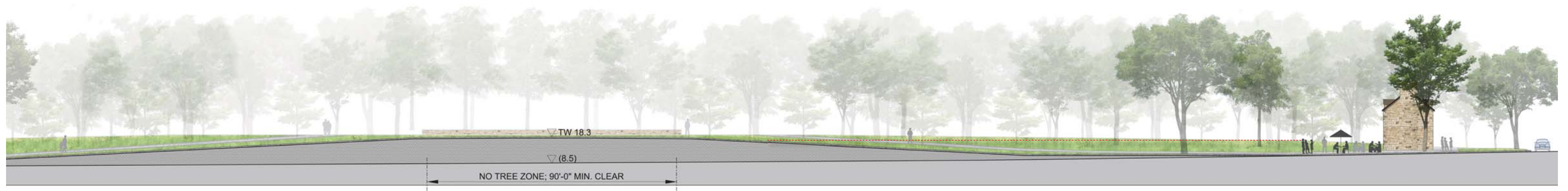
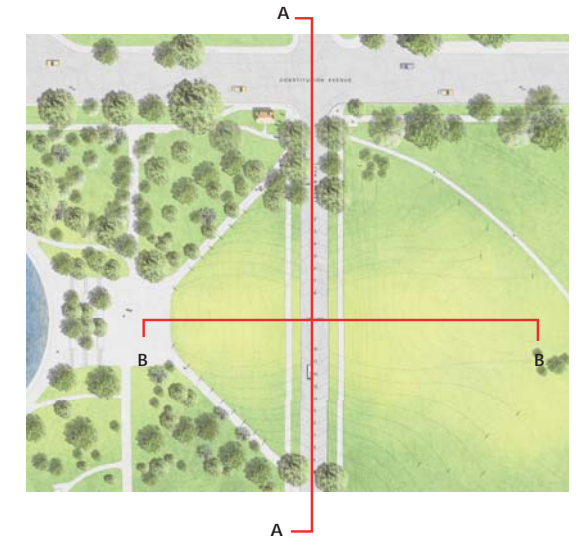


Option 1A V2











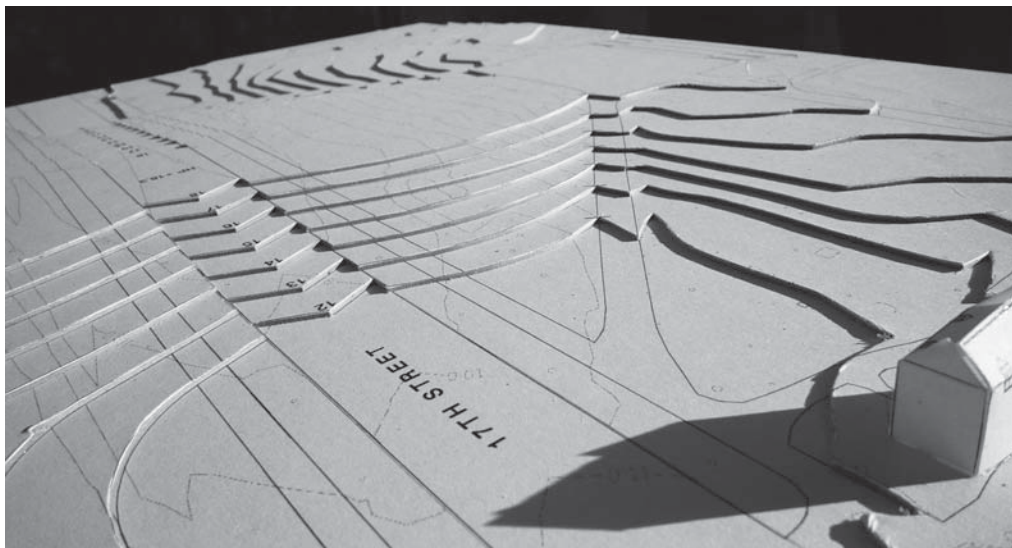
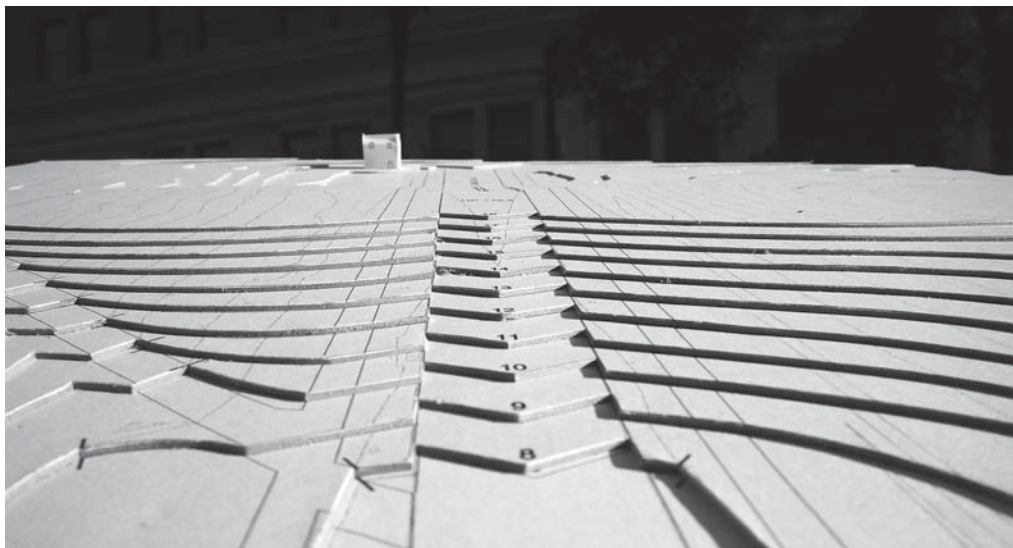
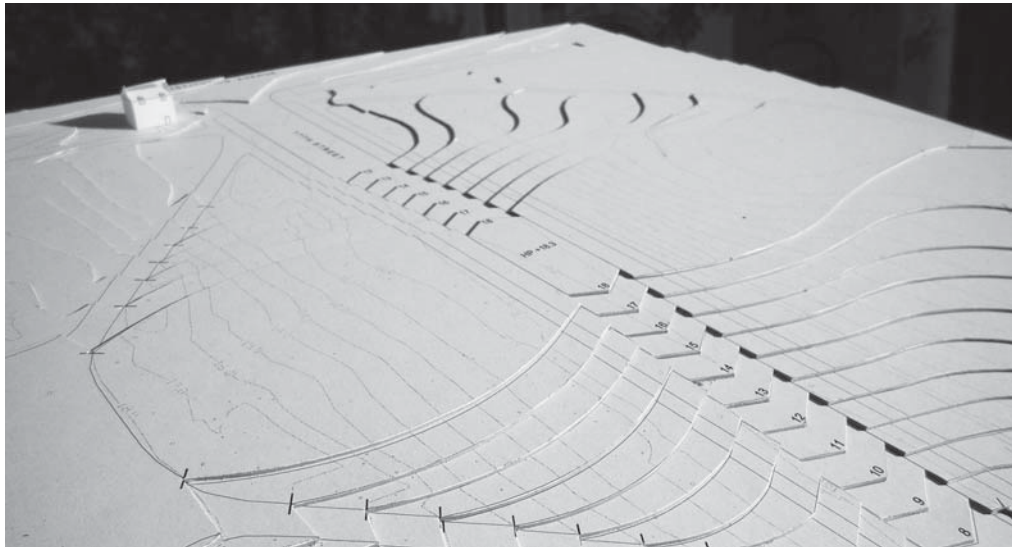
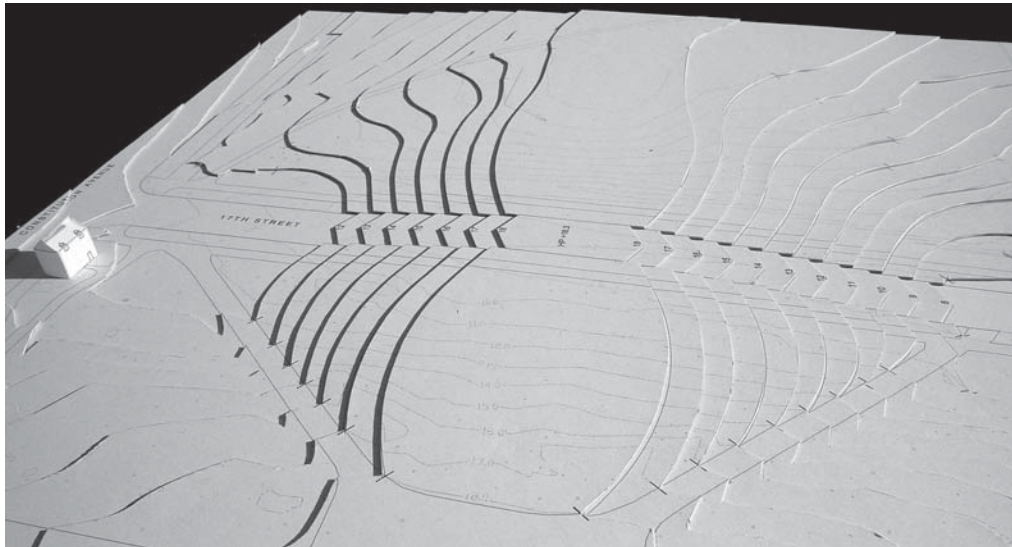
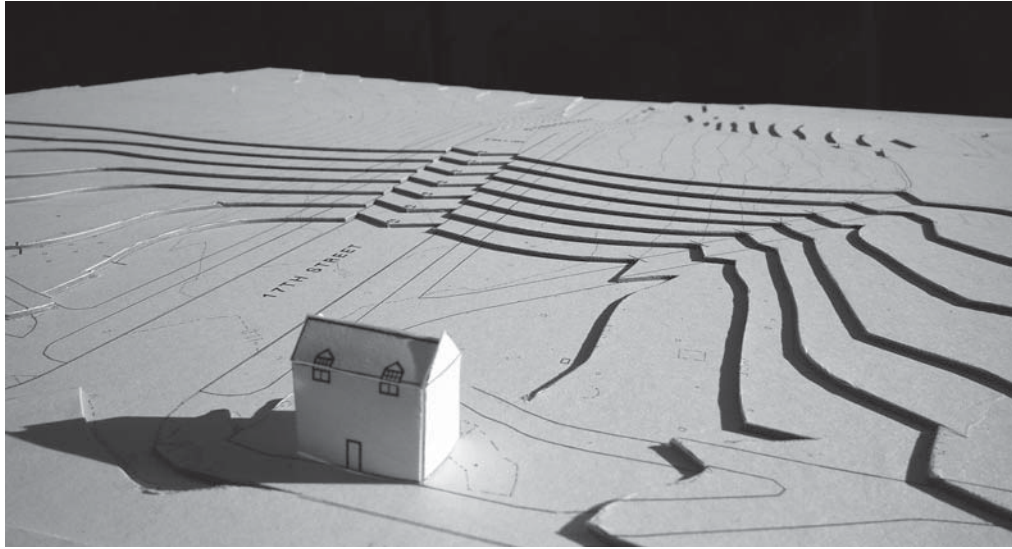
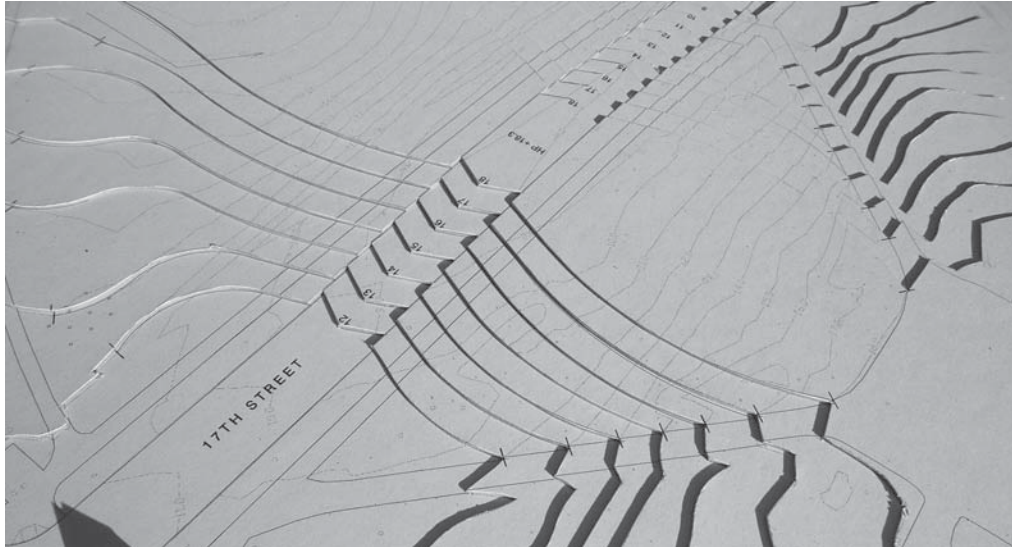


17th Street Looking South at Constitution Avenue



17th Street Looking South at Constitution Avenue





Potomac Park Levee Project

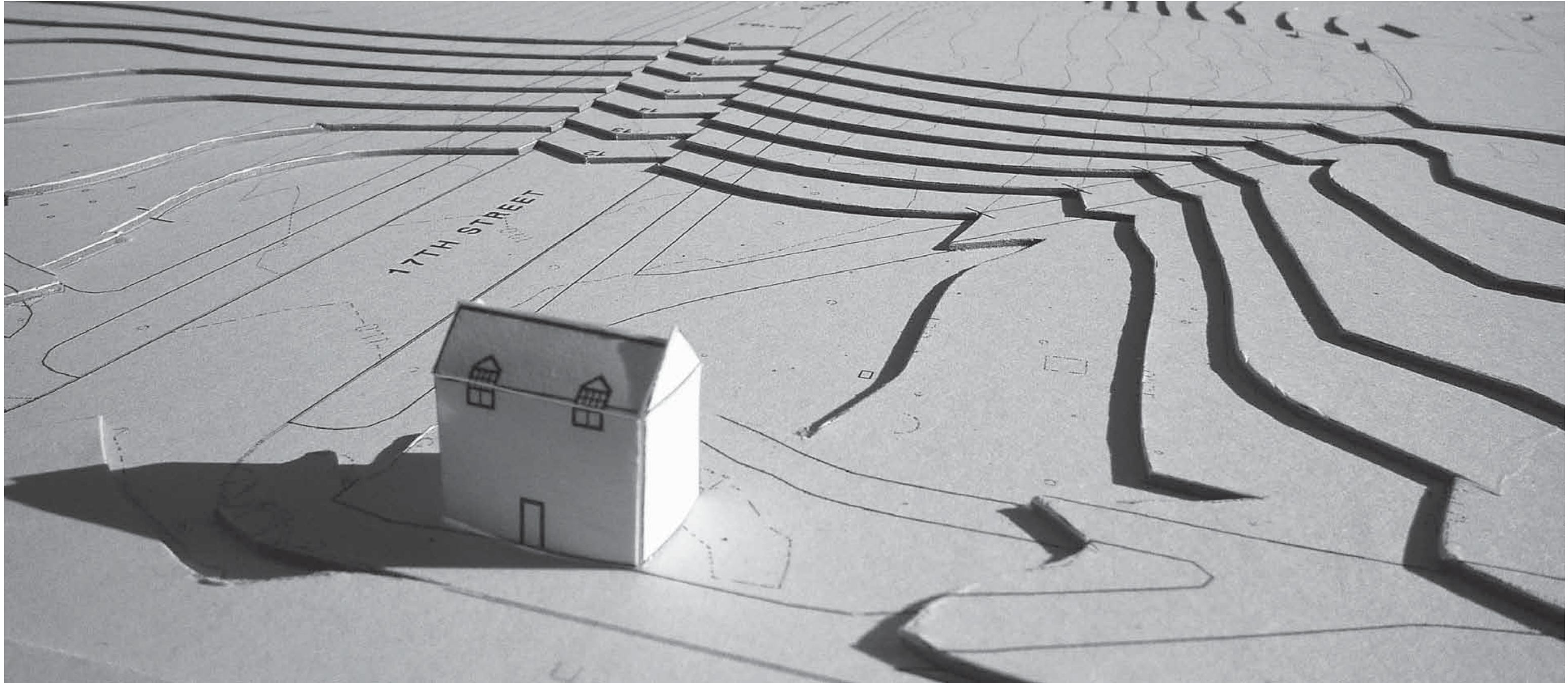
Option 4 - Model Photos

OlinPartnership



AUGUST 19 2008











# Potomac Park5

OPTION

## Culvert/Jersey Barriers







## Potomac Park Levee Project

Option 5 - CULVERTS + JERSEY BARRIERS

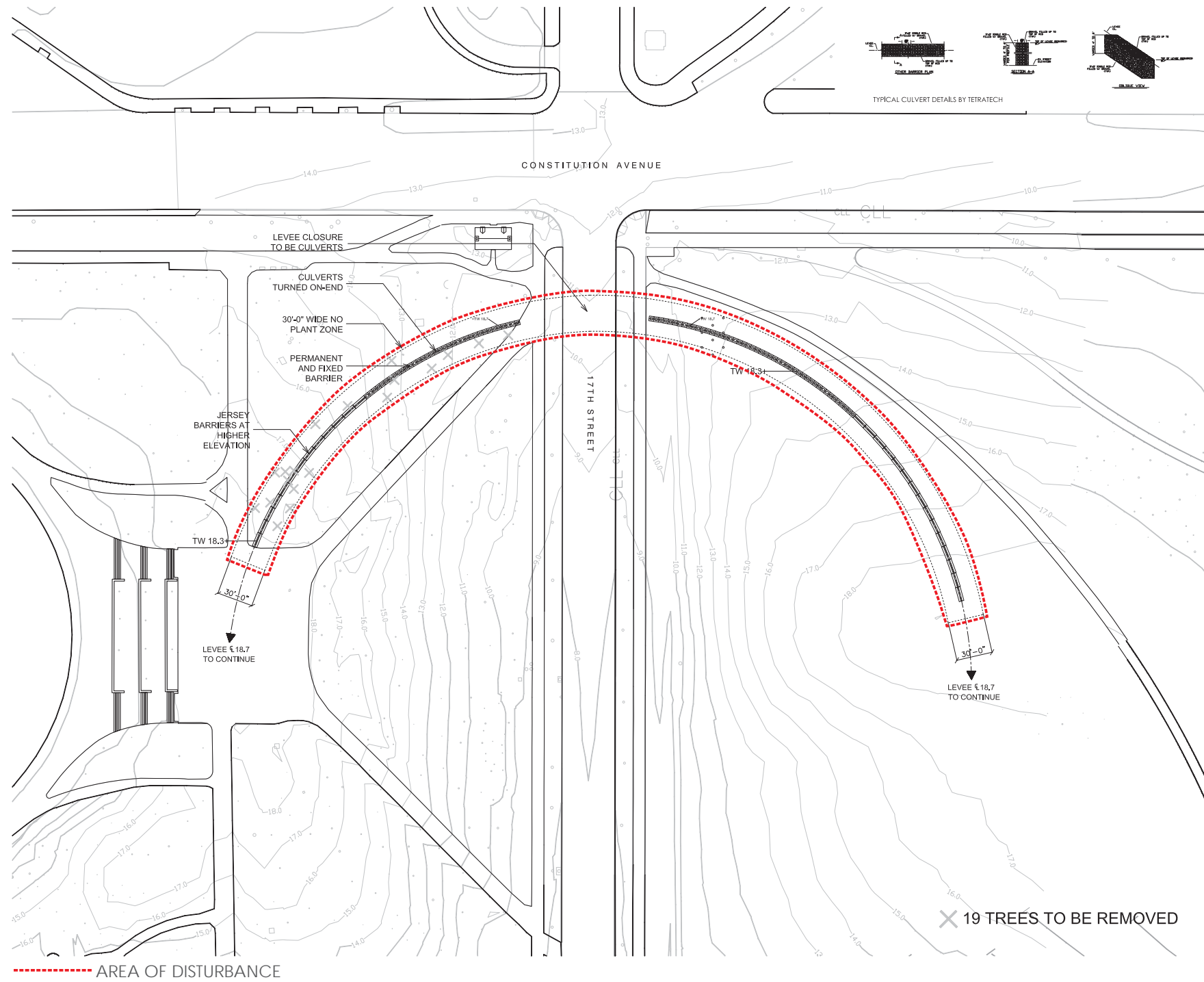


**Olin**Partnership



AUGUST 19 2008





**OlinPartnership**  
 Public Ledger Building, Suite 1123  
 150 South Independence Mall West  
 Philadelphia, PA 19106, USA  
 +1-215 440.0030

Drawing No.: **OPTION 5**  
 Date: 19 AUGUST 2008  
 Scale: 1"=50'

**POTOMAC PARK OPTION 5 0825.02 - 18.3**

Y:\Projects 2008\0825 Potomac Park\CADD\OMP\Olin\Sketch Files\Plans\080819 Meeting\080804 Option 5.dwg





17th Street Looking South at Constitution Avenue



17th Street Looking South at Constitution Avenue



1810

1872



## Washington DC Canal History

This segment of Constitution Avenue west of Pennsylvania Avenue was once the Washington Canal.

Construction on the canal, which was part of Pierre L'Enfant's original plan for the city, began in 1810. Tiber Creek was transformed into the Washington Canal, which ran along what is today Constitution Avenue, eventually working its way towards the U.S. Capitol. It is believed that early city plans called for an extensive network of canals snaking through the Northeast corridor of the United States. In 1872 the canal was filled in; it had become common for Washington residents to throw their garbage into it and the unsanitary conditions became a health concern. Additionally, plans for an extensive canal system were abandoned around this time in favor of a railroad system that would connect Washington to the West. These plans were not successful; after completion of the B&O Railroad, city officials abandoned their plans for a rail system. The canal was filled and paved over.



