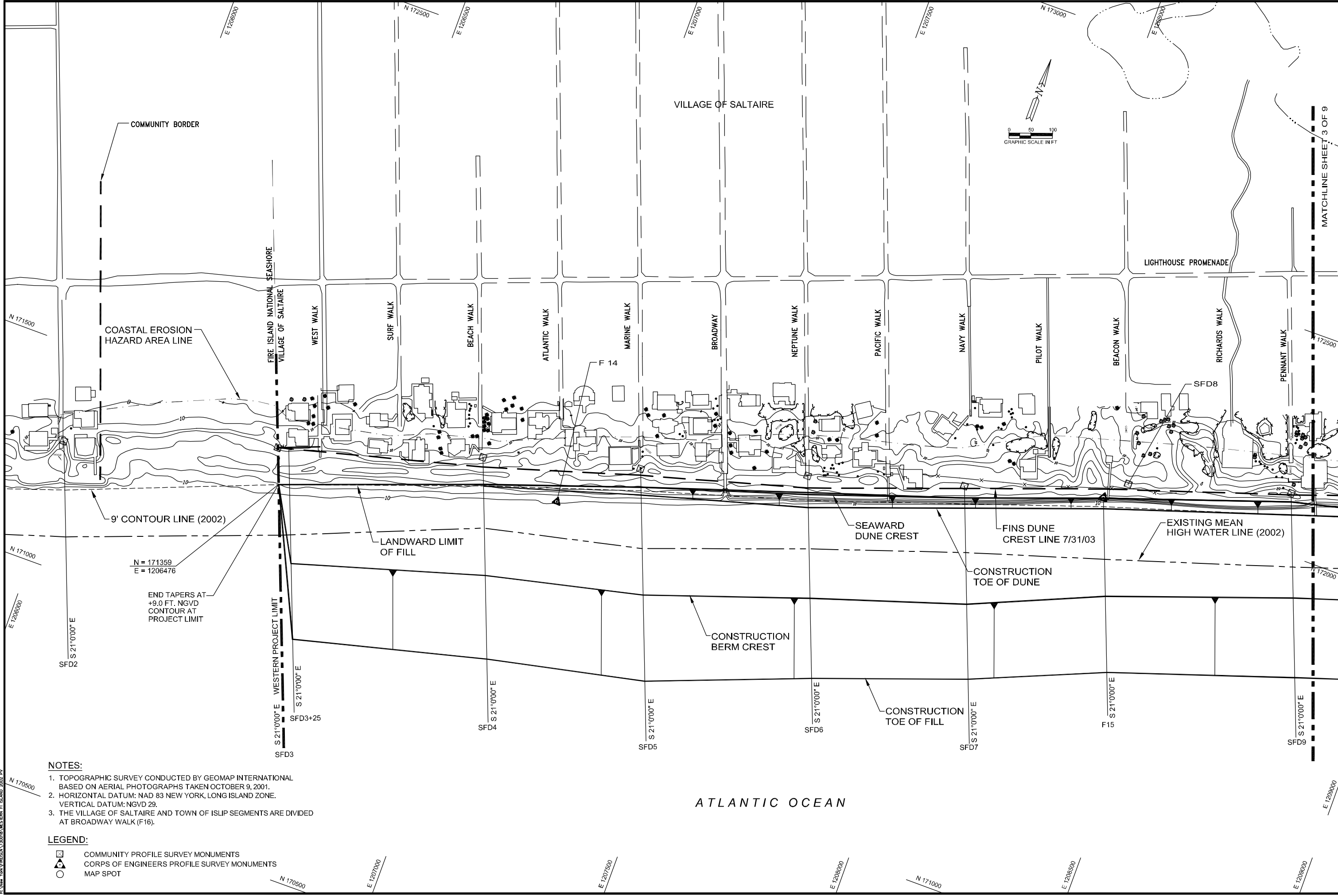


Appendix E

Site Plans for Alternative 2.3, Beach Nourishment with 2003 Permitted Conditions



NOTES:

1. TOPOGRAPHIC SURVEY CONDUCTED BY GEOMAP INTERNATIONAL BASED ON AERIAL PHOTOGRAPHS TAKEN OCTOBER 9, 2001.
2. HORIZONTAL DATUM: NAD 83 NEW YORK, LONG ISLAND ZONE. VERTICAL DATUM: NGVD 29.
3. THE VILLAGE OF SALTAIRE AND TOWN OF ISLIP SEGMENTS ARE DIVIDED AT BROADWAY WALK (F16).

LEGEND:

- ☒ COMMUNITY PROFILE SURVEY MONUMENTS
- ▲ CORPS OF ENGINEERS PROFILE SURVEY MONUMENTS
- MAP SPOT

COASTAL PLANNING & ENGINEERING, of N.Y., P.C.

PHONE: 631-960-1130

www.CoastalPlanning.net

No.	Date	Description
1	2/7/02	Checked by: AMB
2	2/27/02	Designed by: SK
3	11/14/02	Drawn by: TW
4	8/15/03	Reviewed by: TP
		Submitted by: SK
		Date: 1/13/02
		Plot Scale: 1"=100'
		Comm. No.: 7300.16

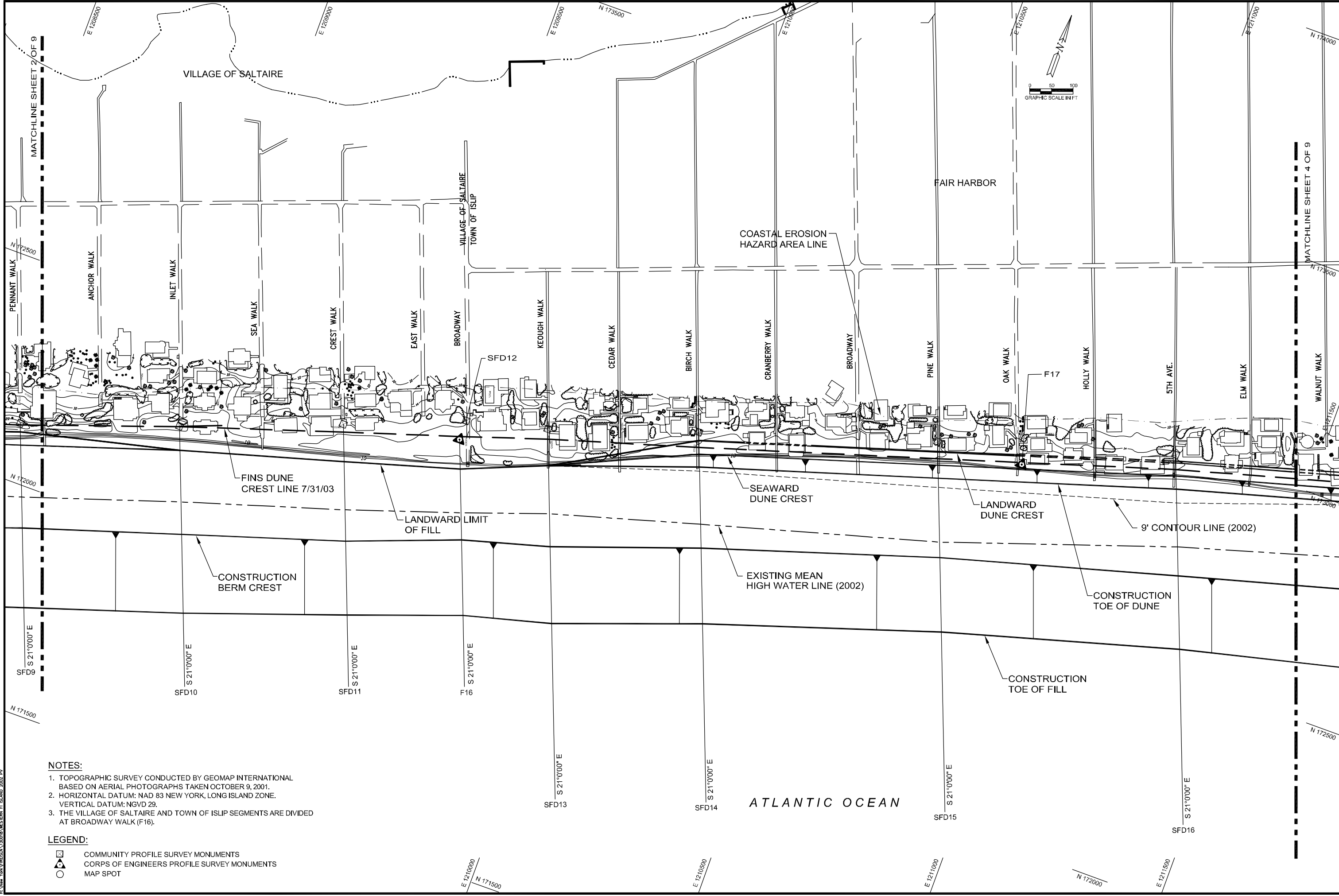
WESTERN FIRE ISLAND BEACH RENOURISHMENT PROJECT

PLAN VIEW

DRAWING NO.

PV-1

SHEET 2 OF 9



NOTES:

1. TOPOGRAPHIC SURVEY CONDUCTED BY GEOMAP INTERNATIONAL BASED ON AERIAL PHOTOGRAPHS TAKEN OCTOBER 9, 2001.
2. HORIZONTAL DATUM: NAD 83 NEW YORK, LONG ISLAND ZONE. VERTICAL DATUM: NGVD 29.
3. THE VILLAGE OF SALTARE AND TOWN OF ISLIP SEGMENTS ARE DIVIDED AT BROADWAY WALK (F16).

LEGEND:

- COMMUNITY PROFILE SURVEY MONUMENTS
- CORPS OF ENGINEERS PROFILE SURVEY MONUMENTS
- MAP SPOT

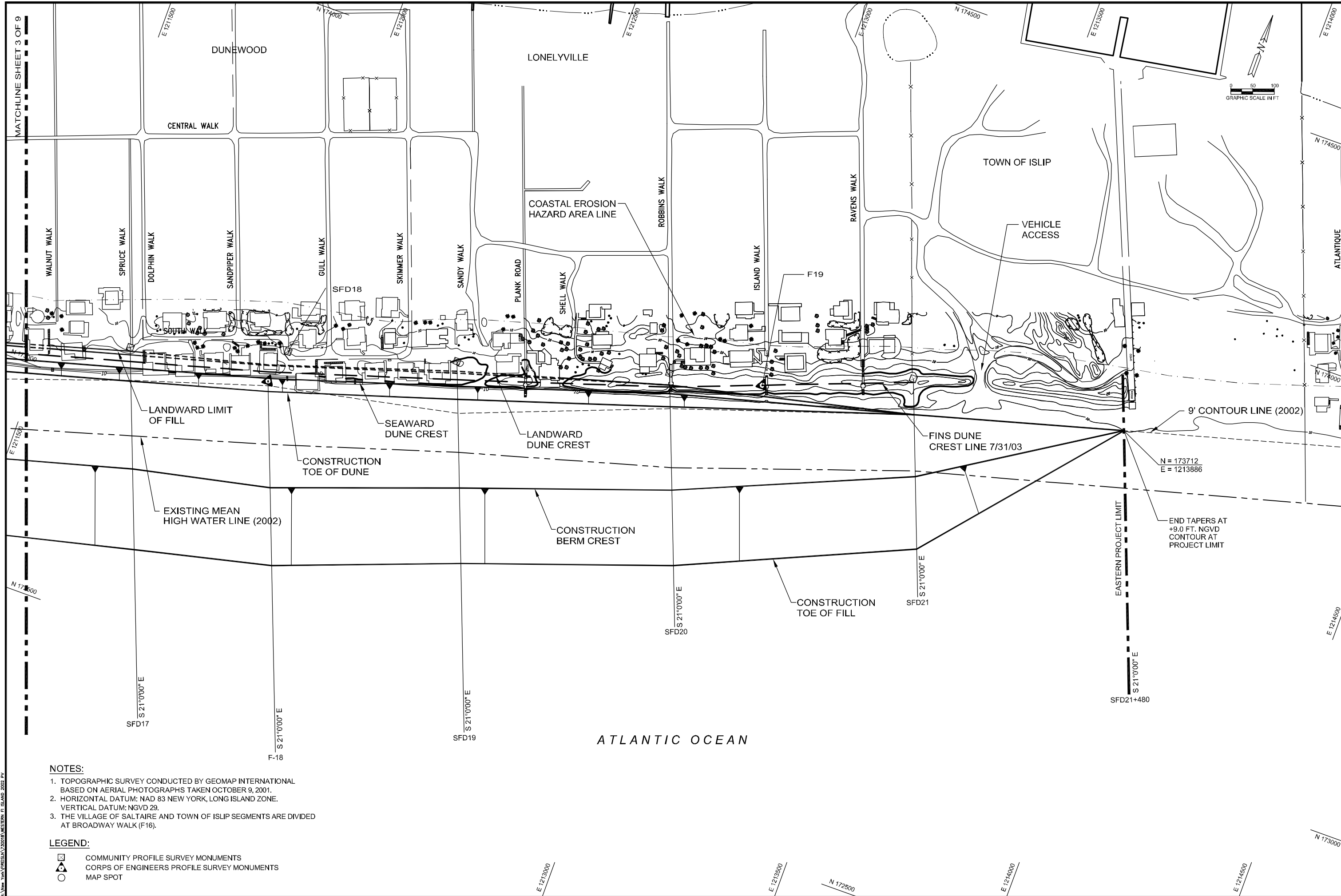
COASTAL PLANNING & ENGINEERING, of N.Y., P.C.
PHONE: 631-960-1130
www.CoastalPlanning.net

No.	Date	Description
1	2/7/02	Checked by: AMB
2	2/27/02	Designed by: SK
3	11/14/02	Drawn by: TW
4	8/15/03	Reviewed by: TP
		Submitted by: SK
		Date: 1/13/02
		Plot Scale: 1"=100'
		Comm. No.: 7300.16

WESTERN FIRE ISLAND
BEACH RENOURISHMENT PROJECT
PLAN VIEW

DRAWING NO.
PV-2

SHEET 3 OF 9



- NOTES:
1. TOPOGRAPHIC SURVEY CONDUCTED BY GEOMAP INTERNATIONAL BASED ON AERIAL PHOTOGRAPHS TAKEN OCTOBER 9, 2001.
 2. HORIZONTAL DATUM: NAD 83 NEW YORK, LONG ISLAND ZONE. VERTICAL DATUM: NGVD 29.
 3. THE VILLAGE OF SALTAIRE AND TOWN OF ISLIP SEGMENTS ARE DIVIDED AT BROADWAY WALK (F16).

- LEGEND:
- COMMUNITY PROFILE SURVEY MONUMENTS
 - CORPS OF ENGINEERS PROFILE SURVEY MONUMENTS
 - MAP SPOT

Coastal Planning & Engineering, of N.Y., P.C.

PHONE: 631-960-1130

www.CoastalPlanning.net

No.	Date	Description
1	2/7/02	
2	2/27/02	
3	11/14/02	
4	8/15/03	

Designed by:	Checked by:
SK	AMB

Drawn by:	Reviewed by:
TW	TP

Date:	Submitted by:
1/13/02	SK

Plot Scale:	Comm. No.:
1"=100'	7300.16

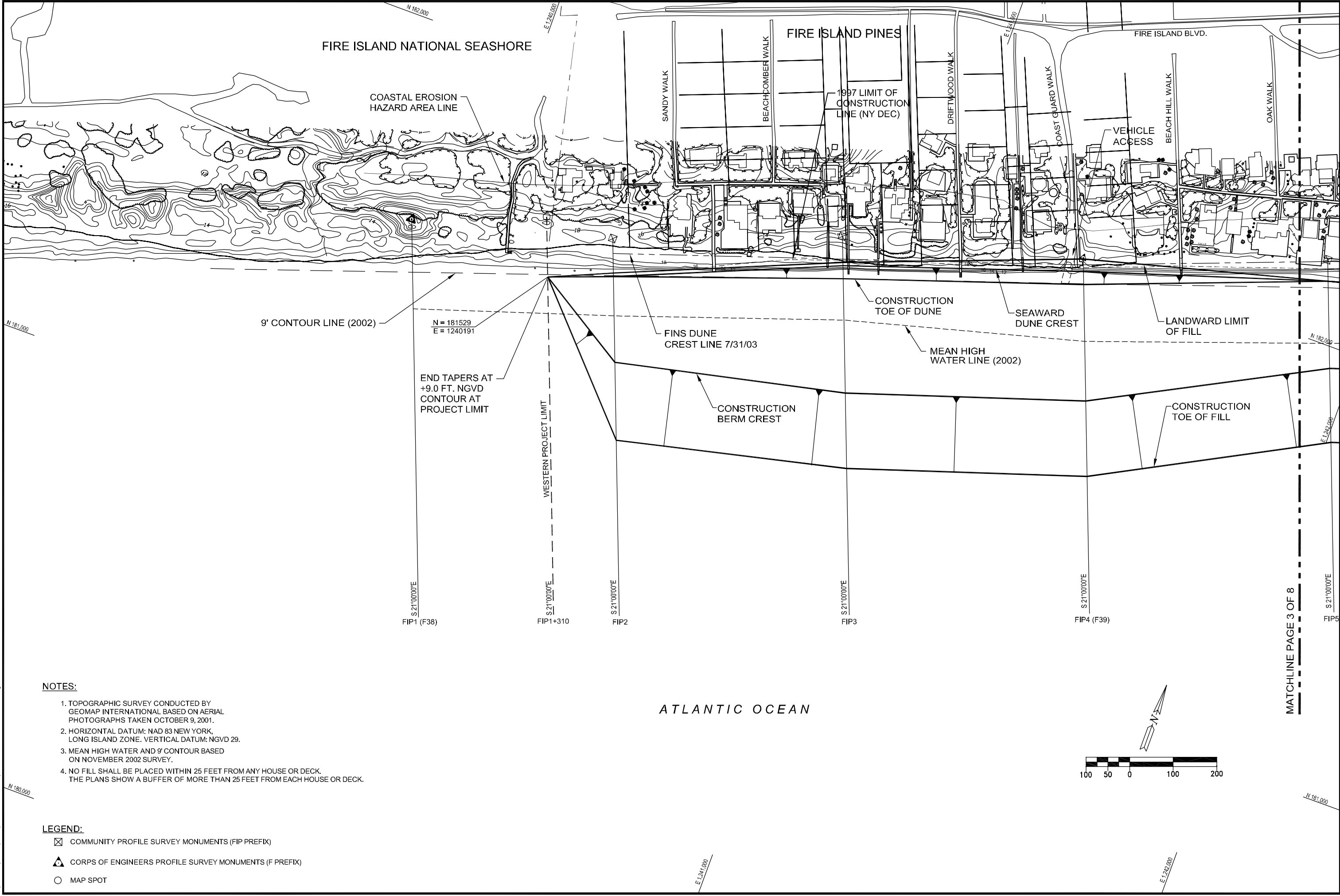
WESTERN FIRE ISLAND BEACH RENOURISHMENT PROJECT

PLAN VIEW

DRAWING NO.

PV-3

SHEET 4 OF 9



NOTES:

1. TOPOGRAPHIC SURVEY CONDUCTED BY GEOMAP INTERNATIONAL BASED ON AERIAL PHOTOGRAPHS TAKEN OCTOBER 9, 2001.
2. HORIZONTAL DATUM: NAD 83 NEW YORK, LONG ISLAND ZONE. VERTICAL DATUM: NGVD 29.
3. MEAN HIGH WATER AND 9' CONTOUR BASED ON NOVEMBER 2002 SURVEY.
4. NO FILL SHALL BE PLACED WITHIN 25 FEET FROM ANY HOUSE OR DECK. THE PLANS SHOW A BUFFER OF MORE THAN 25 FEET FROM EACH HOUSE OR DECK.

LEGEND:

- ☒ COMMUNITY PROFILE SURVEY MONUMENTS (FIP PREFIX)
- ▲ CORPS OF ENGINEERS PROFILE SURVEY MONUMENTS (F PREFIX)
- MAP SPOT

Coastal Planning & Engineering, of N.Y., P.C.
PHONE: 631-960-1130
www.CoastalPlanning.net

No.	Date	Description
1	2/7/02	
2	2/27/02	
3	11/14/02	
4	8/15/03	

Reference Files:

Designed by: SK
Drawn by: TW
Date: 1/13/02
Proj. Scale: 1"=150'

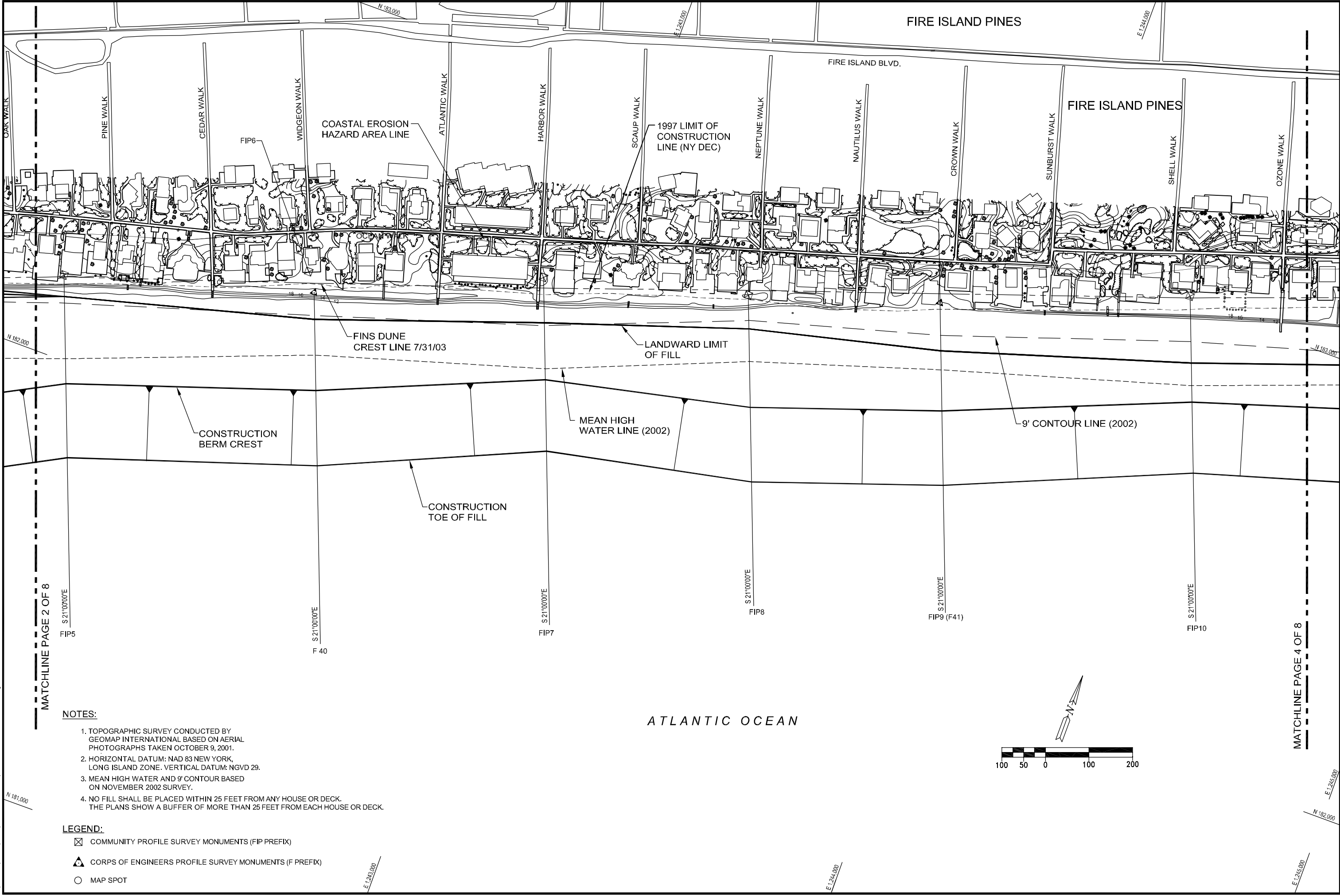
Checked by: AMB
Reviewed by: TP
Submitted by: SK
Comm. No.: 7300.16

FIRE ISLAND PINES
BEACH RENOURISHMENT PROJECT

PLAN VIEW

DRAWING NO.
PV-1

SHEET 2 OF 8



MATCHLINE PAGE 2 OF 8

MATCHLINE PAGE 4 OF 8

NOTES:

1. TOPOGRAPHIC SURVEY CONDUCTED BY GEOMAP INTERNATIONAL BASED ON AERIAL PHOTOGRAPHS TAKEN OCTOBER 9, 2001.
2. HORIZONTAL DATUM: NAD 83 NEW YORK, LONG ISLAND ZONE. VERTICAL DATUM: NGVD 29.
3. MEAN HIGH WATER AND 9' CONTOUR BASED ON NOVEMBER 2002 SURVEY.
4. NO FILL SHALL BE PLACED WITHIN 25 FEET FROM ANY HOUSE OR DECK. THE PLANS SHOW A BUFFER OF MORE THAN 25 FEET FROM EACH HOUSE OR DECK.

LEGEND:

- ☒ COMMUNITY PROFILE SURVEY MONUMENTS (FIP PREFIX)
- ▲ CORPS OF ENGINEERS PROFILE SURVEY MONUMENTS (F PREFIX)
- MAP SPOT

COASTAL PLANNING & ENGINEERING, of N.Y., P.C.

PHONE: 631-960-1130

www.CoastalPlanning.net

No.	Date	Description
1	2/7/02	
2	2/27/02	
3	11/14/02	
4	8/15/03	

Reference Files:

Designed by: SK

Drawn by: TW

Date: 1/13/02

Proj. Scale: 1"=150'

Checked by: AMB

Reviewed by: TP

Submitted by: SK

Comm. No.: 7300.16

FIRE ISLAND PINES

BEACH RENOURISHMENT PROJECT

PLAN VIEW

DRAWING NO.

PV-2

SHEET 3 OF 8

L:\NEW YORK\PROJECTS\2009\FIRE ISLAND PINES CONSTRUCTION\2009-FIRE ISLAND PINES-PLAN VIEW.dwg

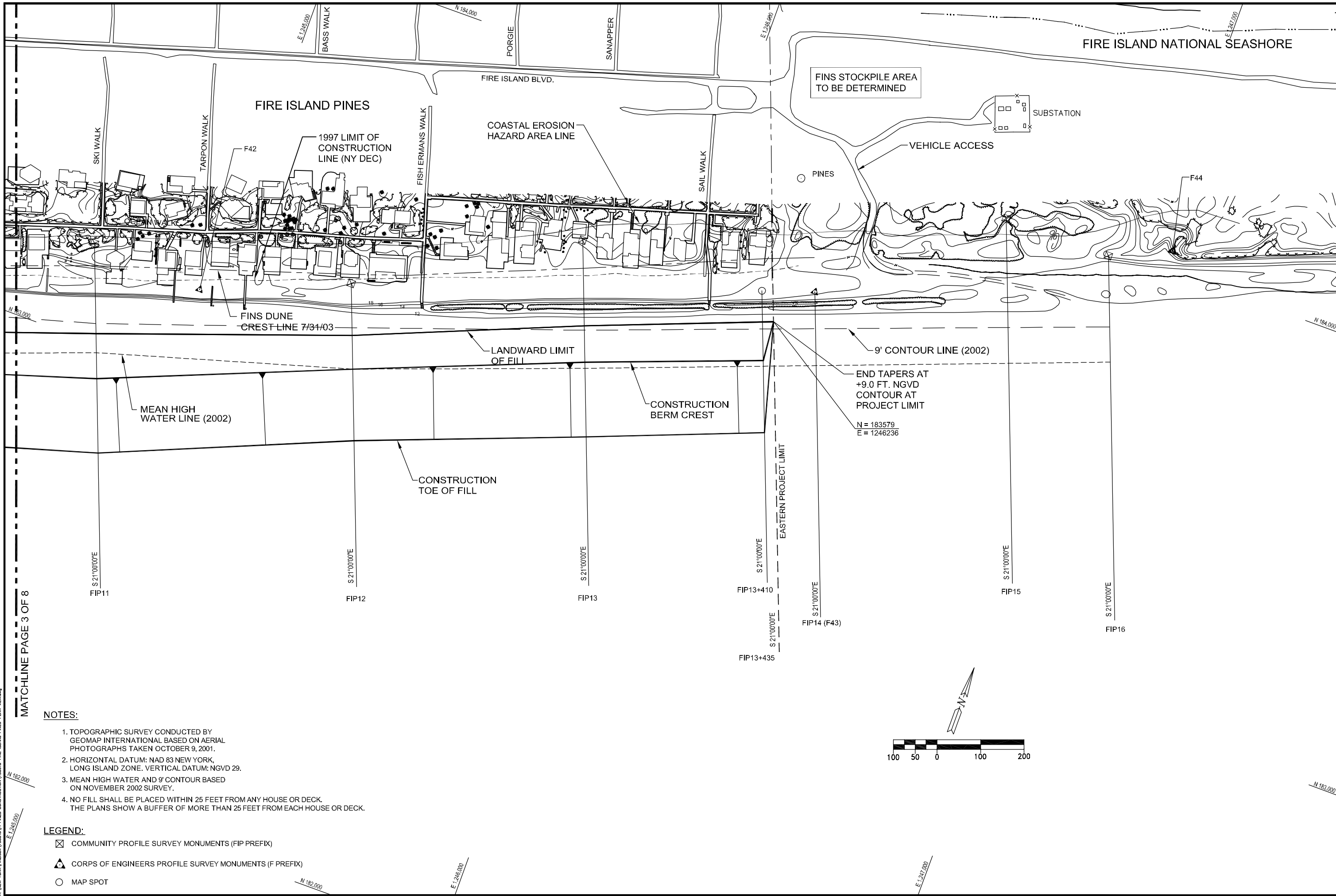
MATCHLINE PAGE 3 OF 8

NOTES:

1. TOPOGRAPHIC SURVEY CONDUCTED BY GEOMAP INTERNATIONAL BASED ON AERIAL PHOTOGRAPHS TAKEN OCTOBER 9, 2001.
2. HORIZONTAL DATUM: NAD 83 NEW YORK, LONG ISLAND ZONE. VERTICAL DATUM: NGVD 29.
3. MEAN HIGH WATER AND 9' CONTOUR BASED ON NOVEMBER 2002 SURVEY.
4. NO FILL SHALL BE PLACED WITHIN 25 FEET FROM ANY HOUSE OR DECK. THE PLANS SHOW A BUFFER OF MORE THAN 25 FEET FROM EACH HOUSE OR DECK.

LEGEND:

- ☒ COMMUNITY PROFILE SURVEY MONUMENTS (FIP PREFIX)
- ▲ CORPS OF ENGINEERS PROFILE SURVEY MONUMENTS (F PREFIX)
- MAP SPOT



COASTAL PLANNING & ENGINEERING, of N.Y., P.C.
PHONE: 631-960-1130
www.CoastalPlanning.net

No.	Date	Description
1	2/7/02	
2	2/27/02	
3	11/14/02	
4	8/15/02	
5	11/12/03	

Reference Files:
Designed by: SK
Checked by: AMB
Drawn by: TP
Reviewed by: TP
Date: 1/13/02
Submitted by: SK
Proj. Scale: 1"=100'
Comm. No.: 7300.16

FIRE ISLAND PINES
BEACH RENOURISHMENT PROJECT
PLAN VIEW

DRAWING NO.
PV-3

SHEET 4 OF 8