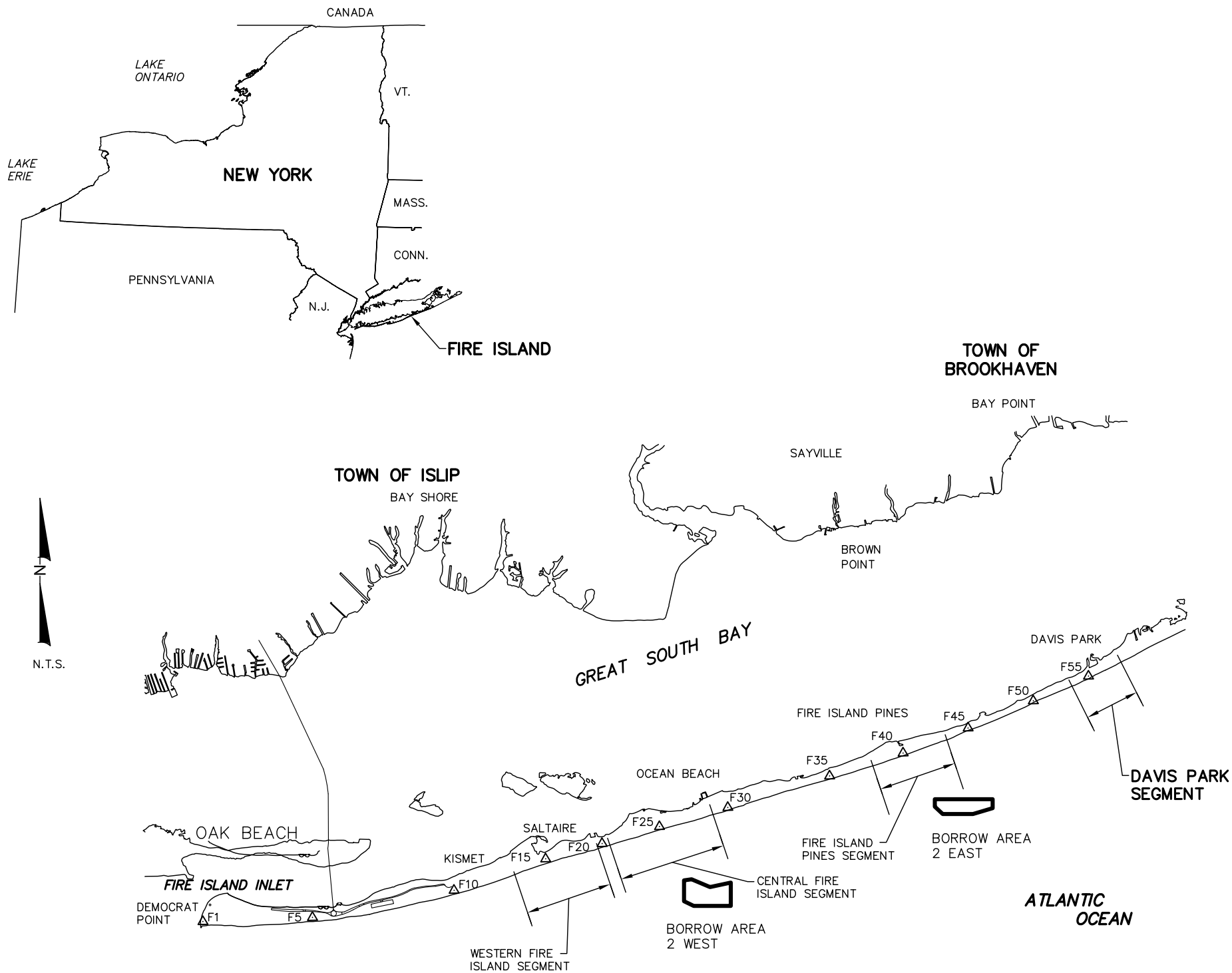


DAVIS PARK SEGMENT FIRE ISLAND 2008 BEACH RENOURISHMENT PROJECT

TOWN OF BROOKHAVEN, NEW YORK



INDEX TO SHEETS

1	COVER SHEET
2	AERIAL PLATE
3-4	DAVIS PARK PLAN VIEWS
5-6	DAVIS PARK BEACH PROFILES
BA-1	BORROW AREA COVER SHEET
BA-2	BORROW AREA 2 EAST BATHYMETRY
BA-3	BORROW AREA 2 EAST ISOPACH
BA-4	BORROW AREA 2 EAST CROSS SECTIONS
BA-5	BORROW AREA 2 WEST BATHYMETRY
BA-6	BORROW AREA 2 WEST ISOPACH
BA-7	BORROW AREA 2 WEST CROSS SECTIONS

DAVIS PARK, FIRE ISLAND, NEW YORK

PROFILE	RANGE 00 (COMMENCEMENT POINT)		
	EASTING	NORTHING	AZIMUTH
DP1	1258776.6	189060.8	159.0
DP1+80	1258833.6	189106.4	159.0
DP2	1259189.4	189262.0	159.0
DP3	1259602.2	189463.2	159.0
DP4	1260015.1	189664.4	159.0
(F55) DP5	1260422.0	189862.7	159.0
DP6	1260858.4	190090.3	159.0
DP7	1261294.4	190317.9	159.0
(F56) DP8	1261722.6	190541.1	159.0
DP9	1262049.0	190705.6	159.0
DP10	1262375.4	190870.1	159.0
DP10+184	1262540.8	190952.5	159.0
DP11	1262696.9	191032.2	159.0

Coastal Planning & Engineering of NY PC
2481 N.W. BOCA RATON BOULEVARD
BOCA RATON, FLORIDA 33431
PH. (561) 391-8102
FAX (561) 391-9116
C.O.A. NY #4582
www.CoastalPlanning.net



No.	Date	Description
1	5/20/08	RESPONSE TO USACE RAI

Designed by: SK	Checked by: AMB
Drawn by: JRC	Reviewed by: SK
Date: 2/22/08	Submitted by: SK
Plot Scale: AS NOTED	Comm. No: 7300.32

Reference Files:
730032_080808

DAVIS PARK SEGMENT
FIRE ISLAND, NEW YORK
2008 BEACH RENOURISHMENT PROJECT
COVER SHEET

DRAWING NO.

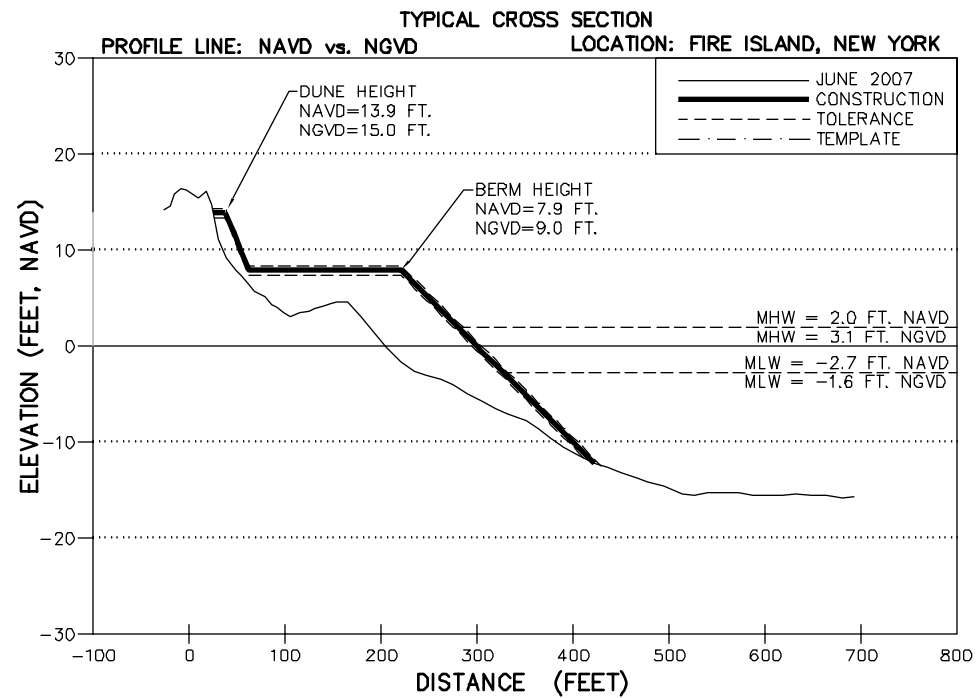
CS

SHEET 1 OF 13

THOMAS J CAMPBELL P.E. NO. 56457

DATE

DAVIS PARK

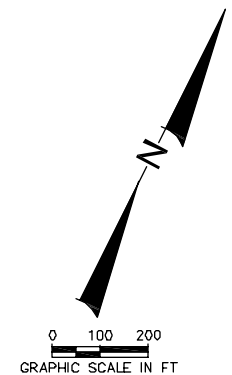


NOTE:
ALL TOPOGRAPHIC SURVEYS AND PROFILES ARE
REFERENCED TO THE NORTH AMERICAN VERTICAL
DATUM 1988, WHICH RELATES TO NGVD AS SHOWN
ABOVE.

NAVD 0.0 FT.

1.1 FT.

NGVD 0.0 FT.



NOTES:

1. DATE OF AERIAL PHOTOGRAPH: 12/18/2007.
2. AERIAL FLOWN BY GEOMAPS INTERNATIONAL AERIAL PHOTOGRAMMETRY.

COASTAL PLANNING & ENGINEERING OF NY PC
 24281 N.W. BOCA RATON BOULEVARD
 BOCA RATON, FLORIDA 33431
 PH. (561) 391-9102
 FAX (561) 391-9116
 C.O.A. NY #4-582
www.CoastalPlanning.net

[illegible]

SK	AMB
Drawn by: JRC	Reviewed by: SK
Date: 2/22/08	Submitted by: SK
Plot Scale: AS NOTED	Comm. No.: 7300.32

30032_POW DE PL.DWG

AERIAL PLATE

DRAWING NO.

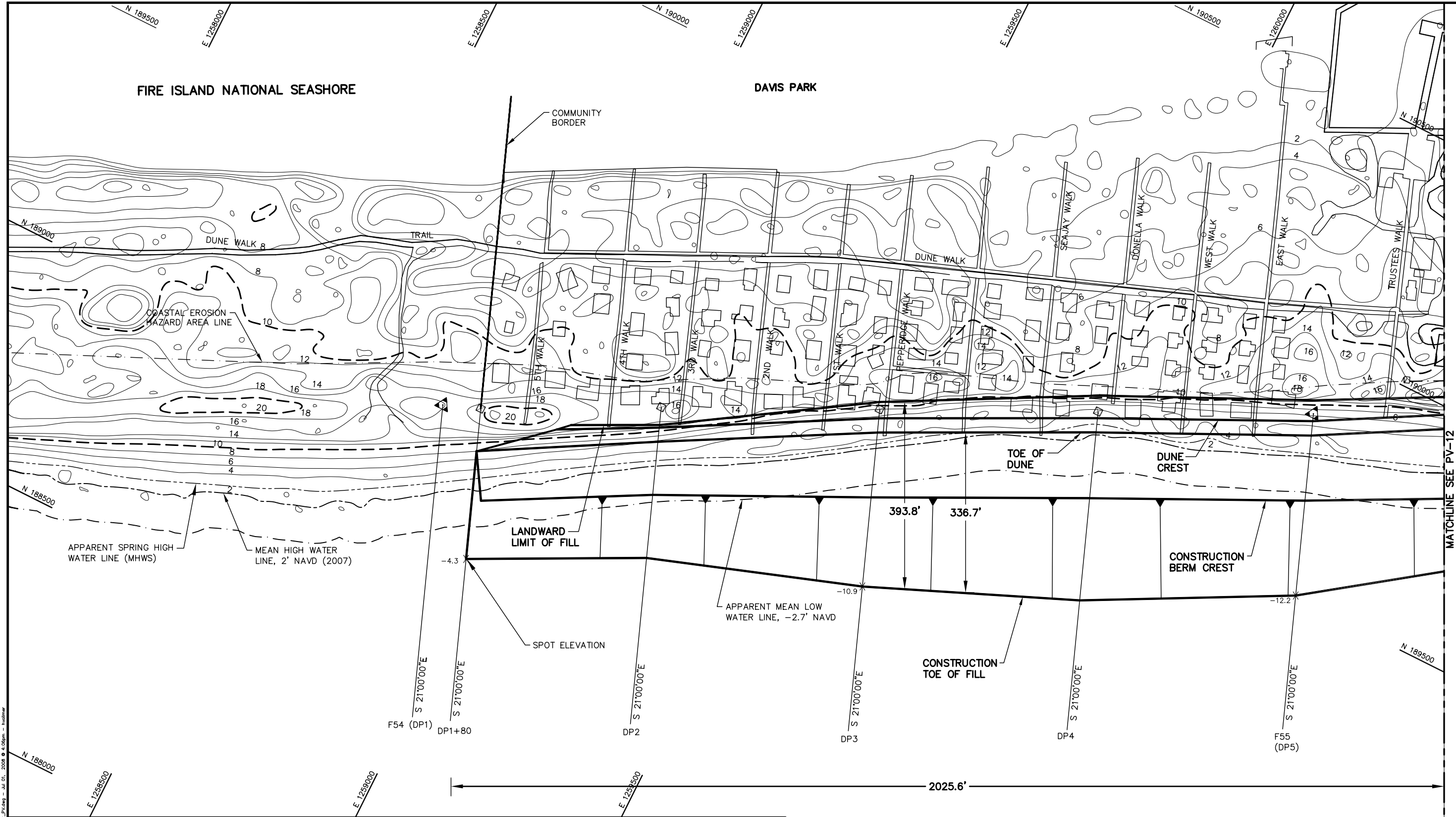
AP

SHEET 2 OF 13

THOMAS J CAMPBELL P.E. NO. 56457

DATE _____

H:\New York\Present\2008\2\CONSTRUCTION\DAVIS PARK\2008\2\DP_Plan.dwg - Jul 01, 2008 @ 4:08pm - hvdmr



NOTES:

- COORDINATES ARE BASED ON NEW YORK LONG ISLAND LAMBERT STATE PLANE COORDINATE SYSTEM, NORTH AMERICAN DATUM 1983 (NAD83).
- TOPOGRAPHIC CONTOURS SHOWN ARE IN FEET NAVD88 FROM A LIDAR SURVEY FLOWN APRIL 29, 2007 BY THE USGS EAARL SYSTEM.
- THE PROJECT WILL DREDGE APPROXIMATELY 942,000± CUBIC YARDS FROM AREA 2—EAST FOR THE FIRE ISLAND PINES AND DAVIS PARK SEGMENT BEACHES. BORROW AREA 2—WEST WILL BE USED AS A SUPPLEMENTAL SAND SOURCE. A CUTTER HEAD OR HOPPER DREDGE WILL BE USED TO TAKE THE SAND FROM THE OFFSHORE BORROW AREA AND PUMP IT TO THE BEACH USING A COMBINATION OF SUBMERGED AND BEACH PIPELINES. THE BEACH/DUNE WILL BE SHAPED AND GRADED USING BULLDOZERS, FRONT END LOADERS, AND SIMILAR HEAVY CONSTRUCTION EQUIPMENT. THE FILL MATERIAL IS 98% SAND AND 2% SILT.
- ALONG SHORE CURRENTS ARE WAVE DOMINATED IN AN EAST TO WEST DIRECTION.
- THE BEACH VOLUME FOR DAVIS PARK IS APPROXIMATELY 305,000 C.Y., WITH 134,800 C.Y. SEAWARD OF THE SPRING TIDE LINE. IF TAPERS CANNOT BE PLACED ON FINS PROPERTY, THE TAPER VOLUME WILL BE PLACED WITHIN THE FIRST 1000 FEET WITHIN THE COMMUNITY.

LEGEND:

- COMMENCEMENT POINT RING 00
- USACE SURVEY MONUMENTS
- CONTOURS
- 10' & 20' CONTOURS
- MEAN HIGH WATER LINE
- SPRING HIGH WATER LINE
- 4.7' X SPOT ELEVATION

ATLANTIC OCEAN

0 50 100
GRAPHIC SCALE IN FT

THOMAS J CAMPBELL P.E. NO. 56457

DATE

DAVIS PARK SEGMENT
FIRE ISLAND, NEW YORK
2008 BEACH RENOURISHMENT PROJECT

PLAN VIEW

DRAWING NO.

PV-1

SHEET 3 OF 13

COASTAL PLANNING & ENGINEERING OF NY PC

2481 N.W. BOCA RATON BOULEVARD
BOCA RATON, FLORIDA 33431

PH. (561) 391-8102
FAX (561) 391-9116

C.O.A. NY #4582



No.	Date	Description
1	5/20/08	RESPONSE TO USACE RAI
2	6/25/08	FINIS EA

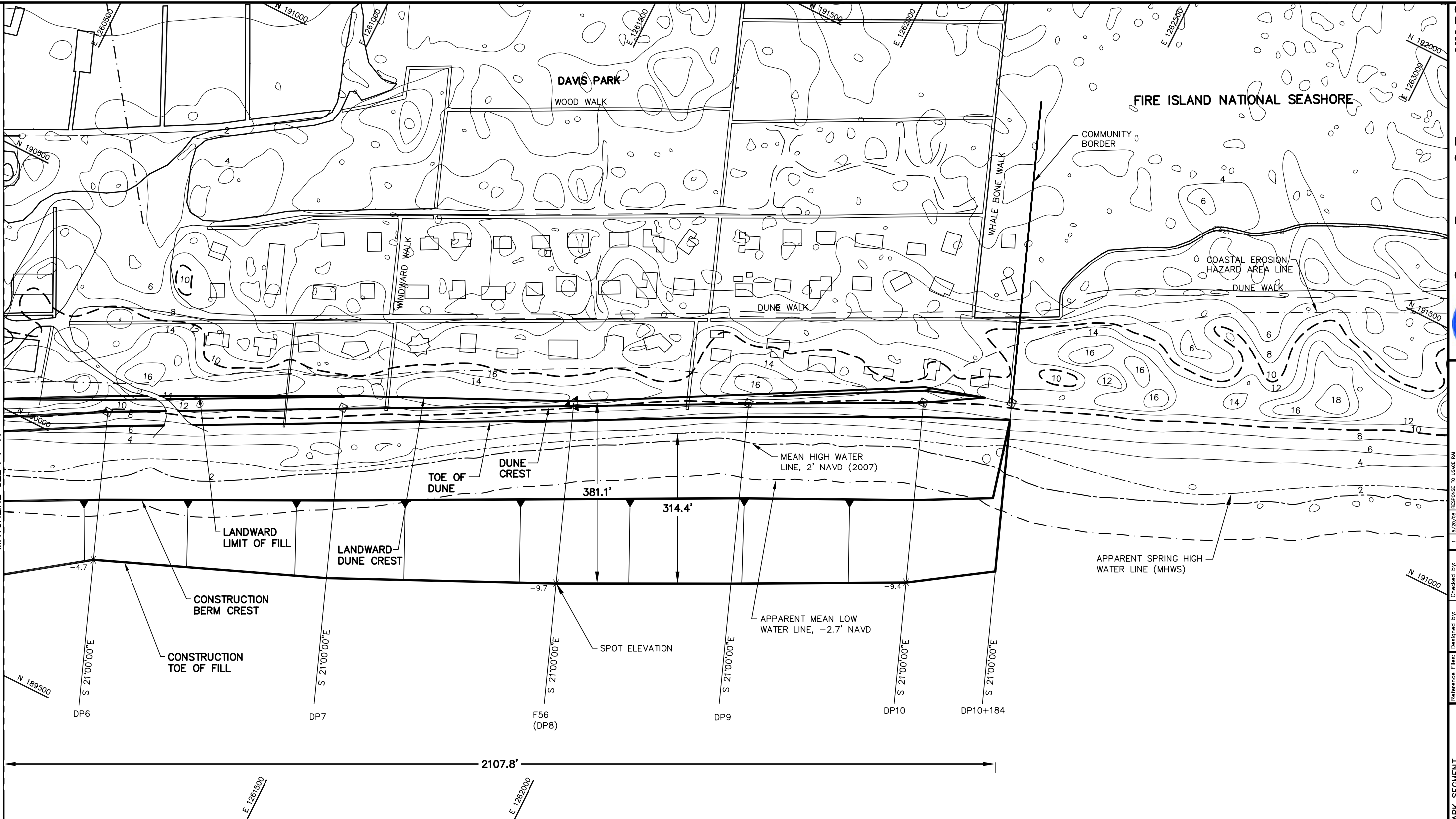
Checked by:	AMB
Reviewed by:	SK
Submitted by:	SK
Comm. No.:	7300.32

Designed by:	SK
Drawn by:	JRC
Date:	2/22/08
Print Scale:	AS NOTED

Reference Files:	730032_080808.dwg
------------------	-------------------

H:\New York\Present\2008\CONSTRUCTION\DAVIS PARK\2008\DP_PV.dwg - Jul 01, 2008 @ 4:05pm - hvdmr

MATCHLINE SEE PV-11



NOTES:

- COORDINATES ARE BASED ON NEW YORK LONG ISLAND LAMBERT STATE PLANE COORDINATE SYSTEM, NORTH AMERICAN DATUM 1983 (NAD83).
- TOPOGRAPHIC CONTOURS SHOWN ARE IN FEET NAVD88 FROM A LIDAR SURVEY FLOWN APRIL 29, 2007 BY THE USGS EAARL SYSTEM.
- THE PROJECT WILL DREDGE APPROXIMATELY 942,000± CUBIC YARDS FROM AREA 2—EAST FOR THE FIRE ISLAND PINES AND DAVIS PARK SEGMENT BEACHES. BORROW AREA 2—WEST WILL BE USED AS A SUPPLEMENTAL SAND SOURCE. A CUTTER HEAD OR HOPPER DREDGE WILL BE USED TO TAKE THE SAND FROM THE OFFSHORE BORROW AREA AND PUMP IT TO THE BEACH USING A COMBINATION OF SUBMERGED AND BEACH PIPELINES. THE BEACH/DUNE WILL BE SHAPED AND GRADED USING BULLDOZERS, FRONT END LOADERS, AND SIMILAR HEAVY CONSTRUCTION EQUIPMENT. THE FILL MATERIAL IS 98% SAND AND 2% SILT.
- ALONG SHORE CURRENTS ARE WAVE DOMINATED IN AN EAST TO WEST DIRECTION.
- THE BEACH VOLUME FOR DAVIS PARK IS APPROXIMATELY 305,000 C.Y., WITH 134,800 C.Y. SEAWARD OF THE SPRING TIDE LINE. IF TAPERS CANNOT BE PLACED ON FINS PROPERTY, THE TAPER VOLUME WILL BE PLACED WITHIN THE FIRST 1000 FEET WITHIN THE COMMUNITY.

LEGEND:

- COMMENCEMENT POINT RING 00
- USACE SURVEY MONUMENTS
- CONTOURS
- 10' & 20' CONTOURS
- MEAN HIGH WATER LINE
- SPRING HIGH WATER LINE
- SPOT ELEVATION

ATLANTIC OCEAN

0 50 100
GRAPHIC SCALE IN FT

N 190000

THOMAS J CAMPBELL P.E. NO. 56457

DATE

DRAWING NO.

PV-2

SHEET 4 OF 13

DAVIS PARK SEGMENT
FIRE ISLAND, NEW YORK
2008 BEACH RENOURISHMENT PROJECT

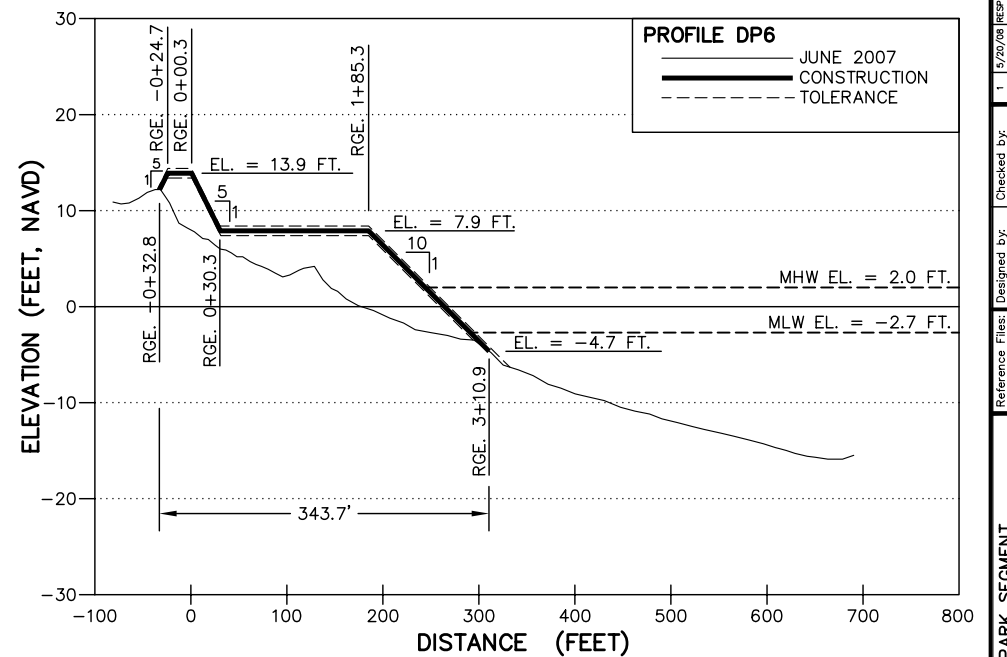
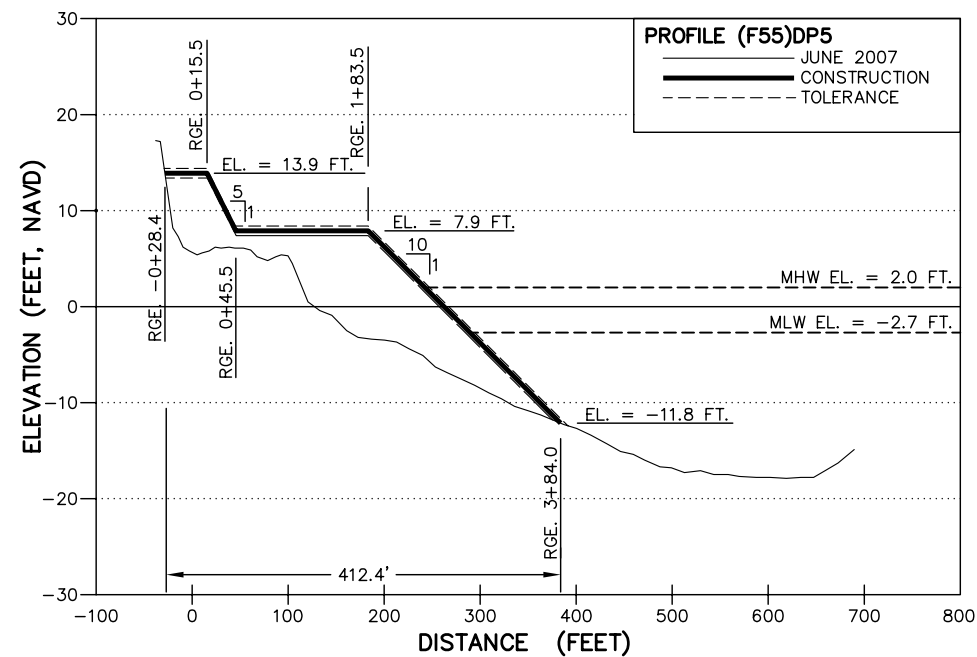
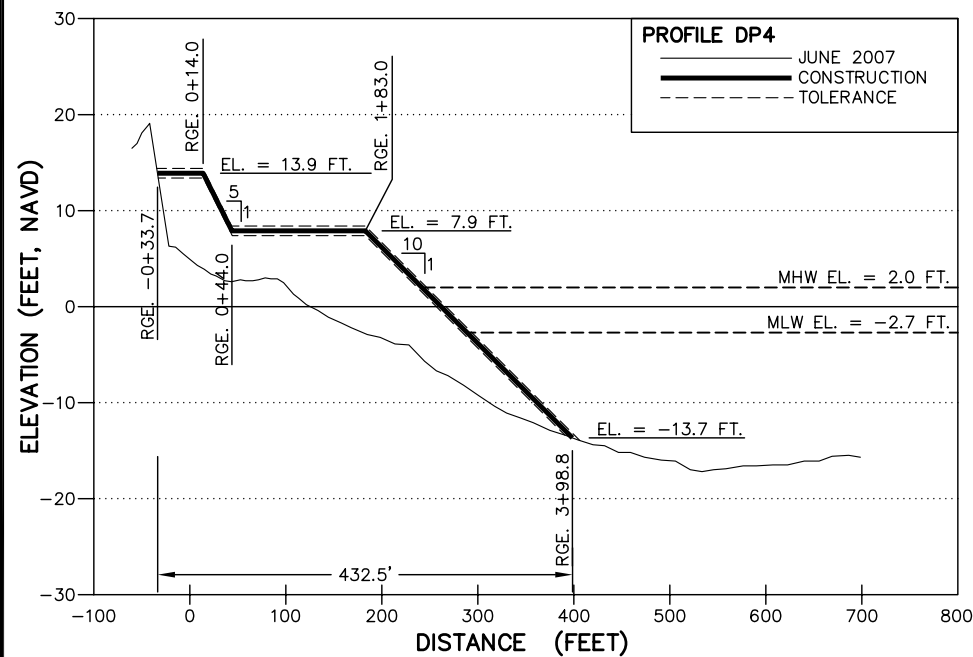
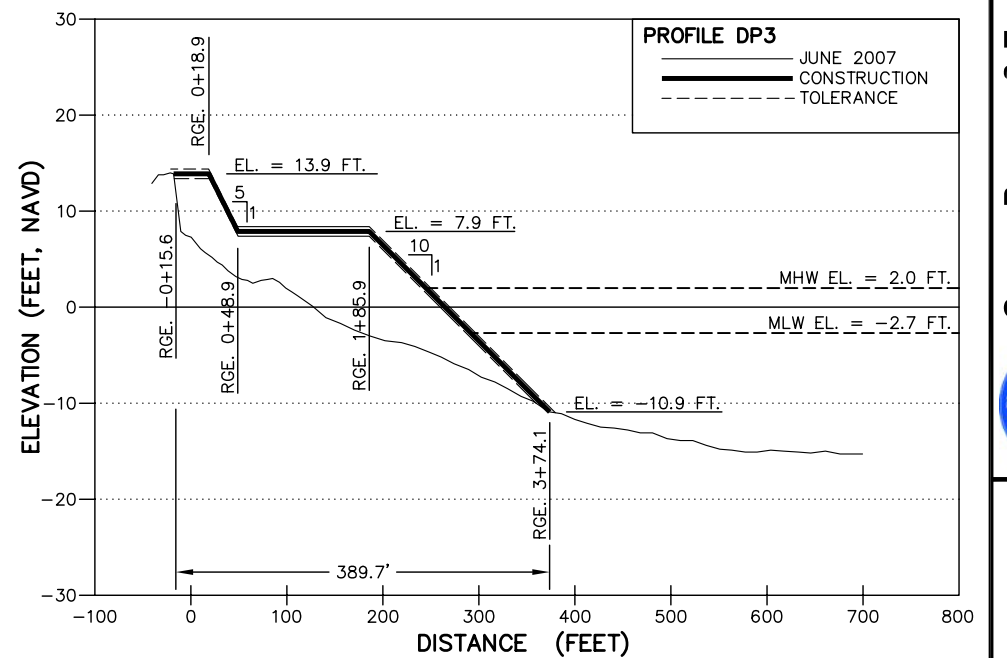
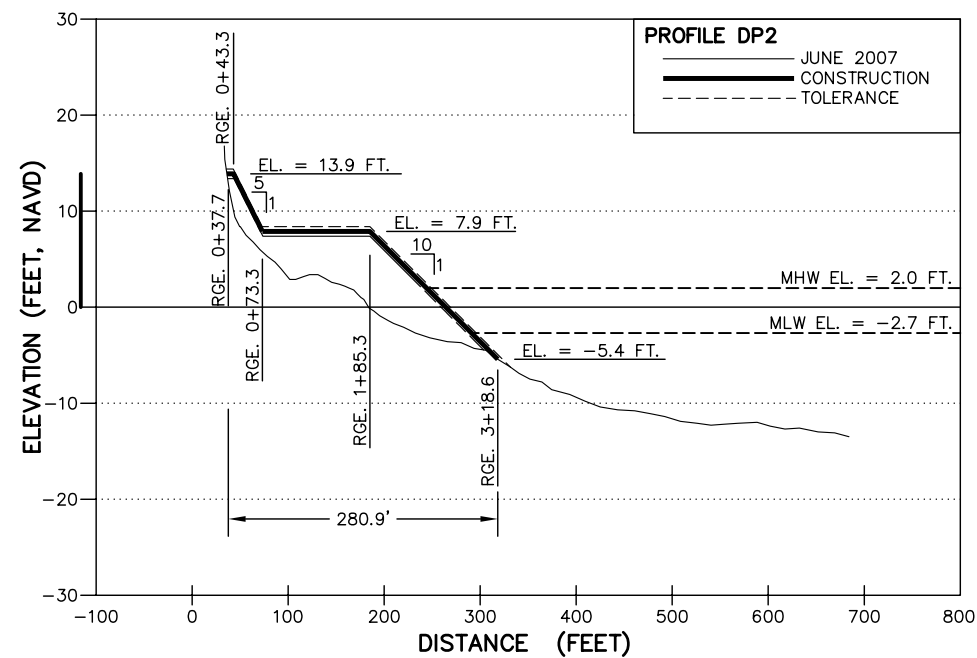
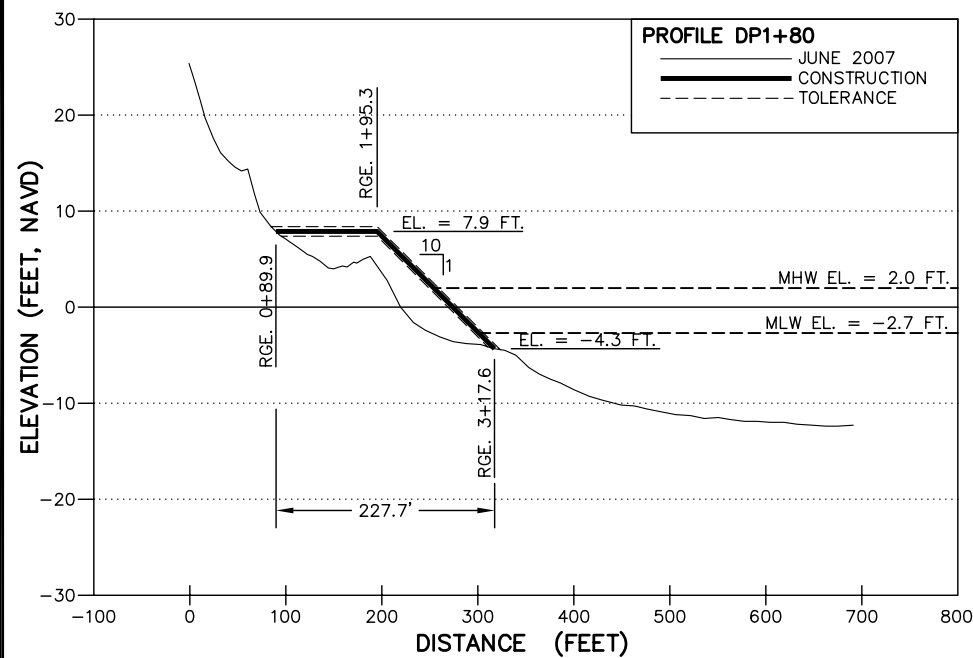
PLAN VIEW

Reference Files:
730032_080806.dwg
Designed by:
SK
Drawn by:
JRC
Date:
2/22/08
Print Scale:
AS NOTED
Checked by:
AMB
Reviewed by:
SK
Submitted by:
SK
Comm. No.:
7300.32

No.	Date	Description
1	5/20/08	RESPONSE TO USACE RAI
2	6/25/08	FINIS EA





COASTAL PLANNING & ENGINEERING OF NY PC
2481 N.W. BOCA RATON BOULEVARD
BOCA RATON, FLORIDA 33431
PH. (561) 391-8102
FAX (561) 391-9116
www.CoastalPlanning.net
C.O.A. NY #4592



NOTES:

1. ELEVATIONS ARE IN FEET BASED ON THE NORTH AMERICAN VERTICAL DATUM OF 1988 (NAVD,88).
2. TOLERANCE: ± 0.5 FT.

HORIZONTAL SCALE:  GRAPHIC SCALE IN FT

VERTICAL SCALE:  GRAPHIC SCALE IN FT

THOMAS J CAMPBELL P.E. NO. 56457

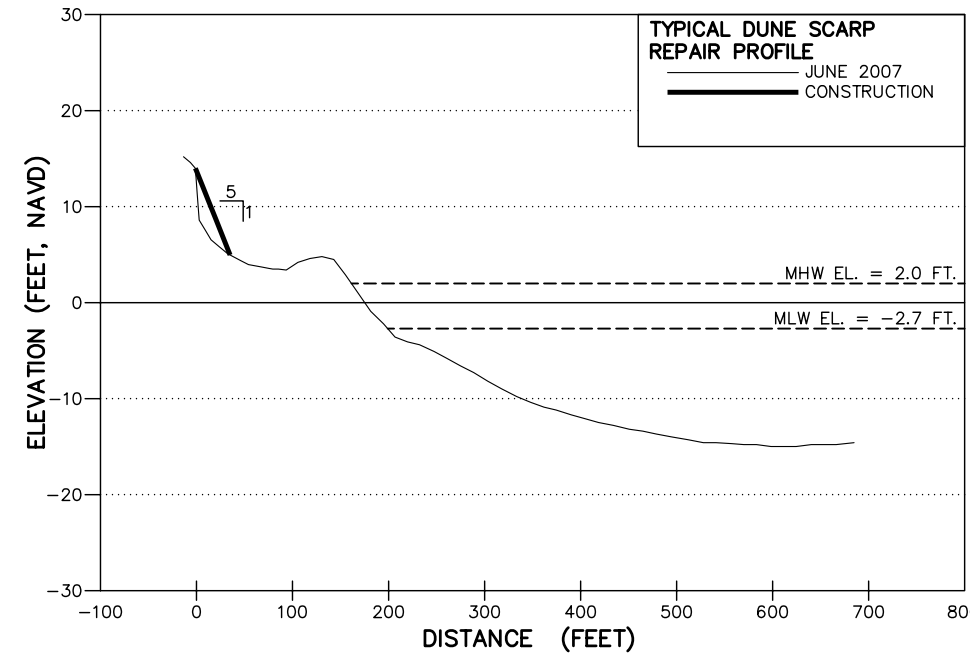
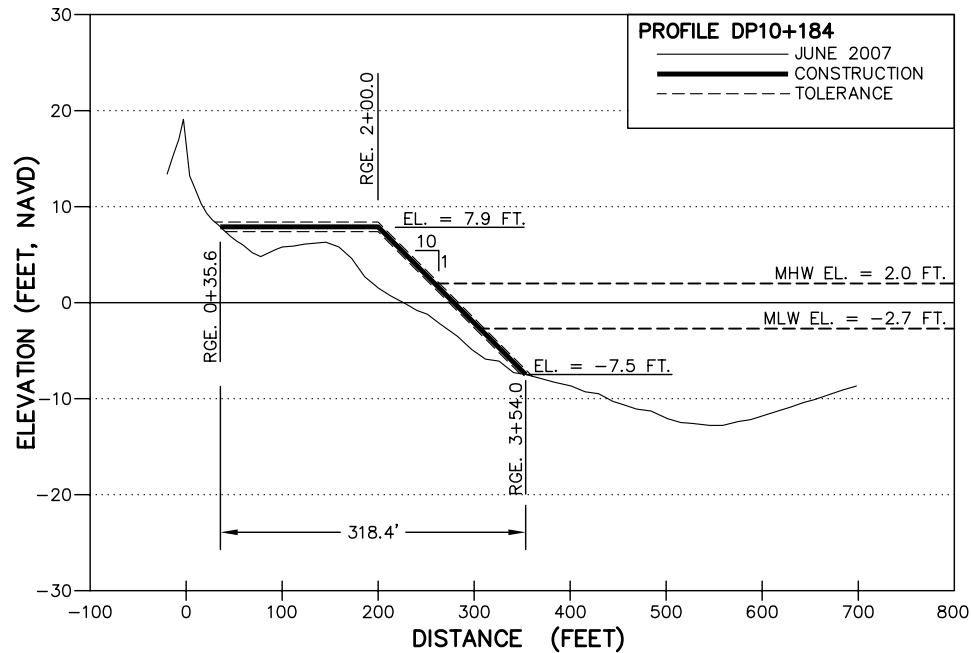
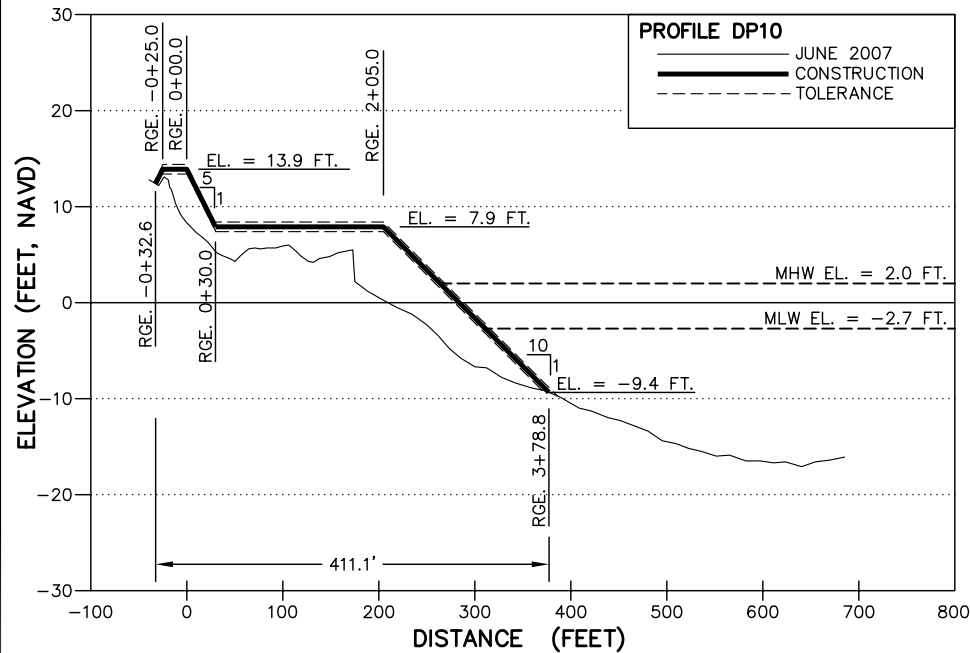
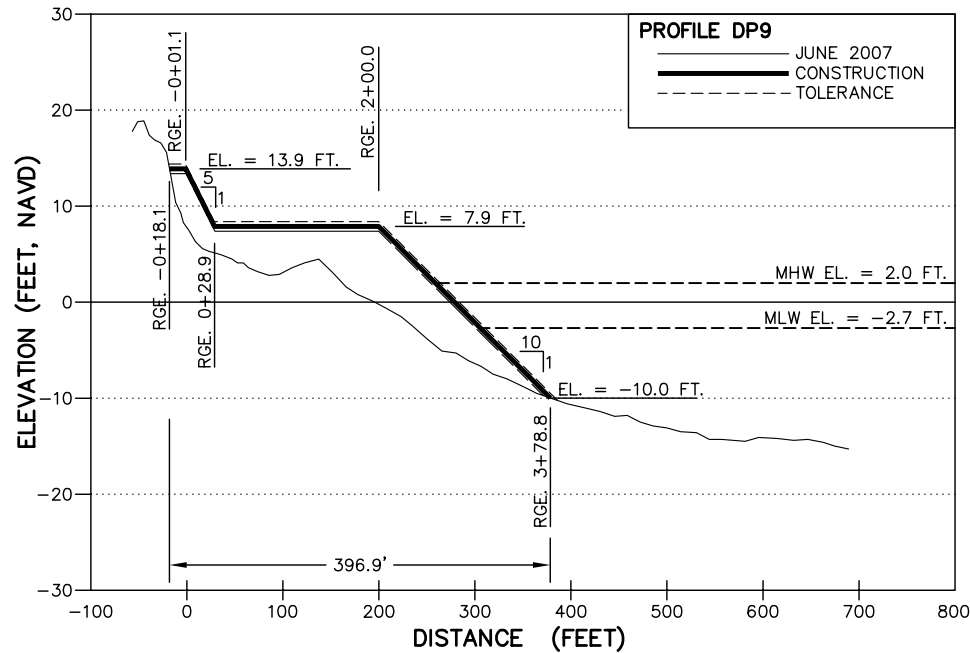
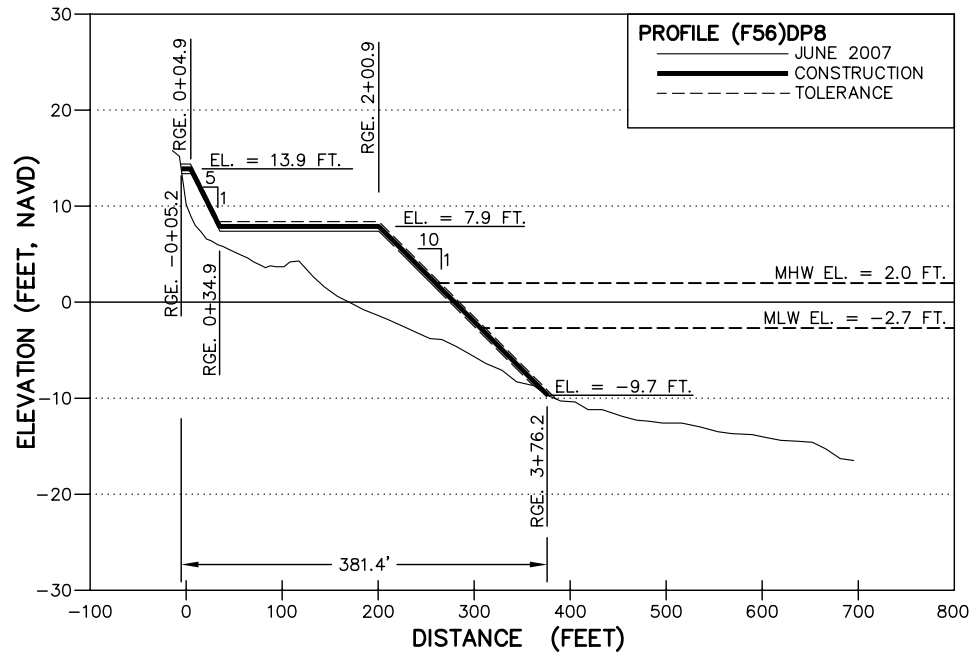
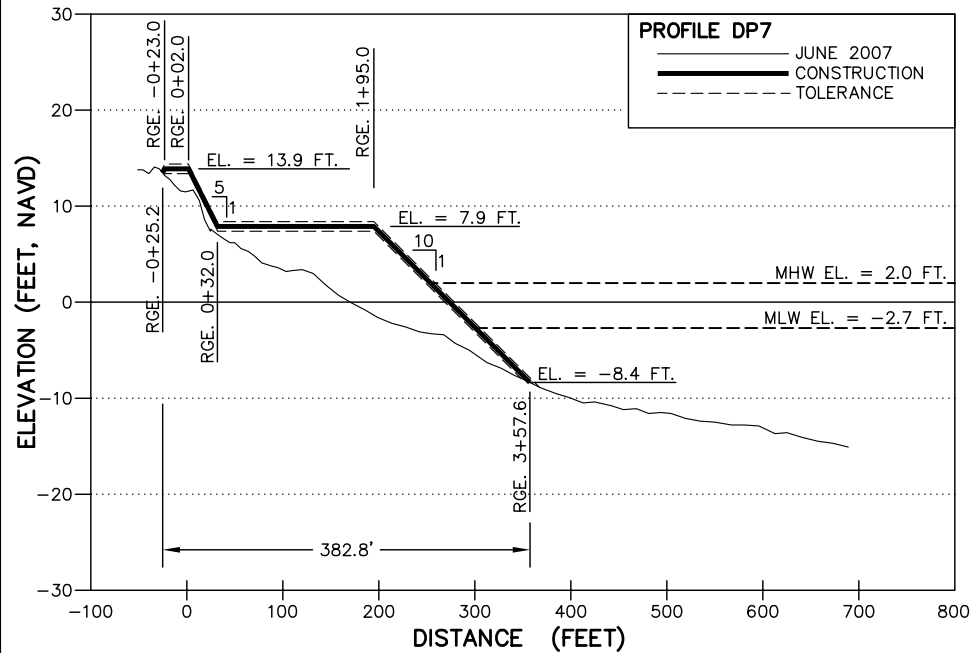
DATE _____

COASTAL PLANNING & ENGINEERING OF NY PC
PH. (561) 391-8102
FAX (561) 391-9116
2481 N.W. BOCA RATON BOULEVARD
BOCA RATON, FLORIDA 33431
C.O.A. NY #4582
www.CoastalPlanning.net



750032_BORDER.DWG		SK	AMB	2	6/22/08	FINS EA
Drawn by:		TM	Reviewed by:	SK		
Date:		2/22/08	Submitted by:	SK		
Plot Scale:		AS NOTED	Comm. No.:	750032		
		No.	Date			Description

H:\New York\Present\2003\CONSTRUCTION\DAVIS PARK\2003\DP.dwg - Jul 01, 2008 3:35pm - hvdimer



NOTES:

1. ELEVATIONS ARE IN FEET BASED ON THE NORTH AMERICAN VERTICAL DATUM OF 1988 (NAVD,88).
2. TOLERANCE: ± 0.5 FT.

HORIZONTAL SCALE: 0 50 100
GRAPHIC SCALE IN FT
0 5 10
VERTICAL SCALE: 0 5 10
GRAPHIC SCALE IN FT

THOMAS J CAMPBELL P.E. NO. 56457

DATE

DAVIS PARK SEGMENT
FIRE ISLAND, NEW YORK
2008 BEACH RENOURISHMENT PROJECT
BEACH PROFILES

DRAWING NO.

PR-2

SHEET 6 OF 13

Reference Files:	Designed by:	Checked by:	1 15/20/08 RESPONSE TO USACE RAI
750032_BeachProfile	SK	AMB	2 6/25/08 FINE EA
	Drawn by:	Reviewed by:	
	TM	SK	
	Date:	Submitted by:	
	2/22/08	SK	
	Print Scale:	Comm. No:	
	AS NOTED	7300.32	
		No.	Date
			Description



Coastal Planning & Engineering of NY PC
2481 N.W. BOCA RATON BOULEVARD
BOCA RATON, FLORIDA 33431

PH. (561) 391-8102
FAX (561) 391-9116

C.O.A. NY #4582

www.CoastalPlanning.net