

Appendix I

Analysis and Aerial Photographs of 2003 Dune Crest Line Versus 2008 Dune Crest Line

G:\NewYork\FireIsland\730032_FIRE_ISLAND\MXD\WESTERN_DUNE_COMPARISON_040108.mxd



MATCHLINE FIGURE 2

NOTES

1. COORDINATES ARE IN FEET BASED ON THE NEW YORK LONG ISLAND STATE PLANE COORDINATE SYSTEM, NORTH AMERICAN DATUM OF 1983 (NAD 83).
2. AERIAL PHOTOGRAPHY PROVIDED BY NYS OFFICE OF CYBER SECURITY & CRITICAL INFRASTRUCTURE COORDINATION. DATE FLOWN APRIL 2004.
3. TRANSECTS WERE RUN EVERY 100 FT TO DETERMINE AVERAGE, MINIMUM AND MAXIMUM DISTANCE BETWEEN THE 2003 AND 2008 DUNE LINES.
4. THE FINS 2003 LINE IS BASED ON THE LINE FROM THE PERMITTED PLANS REVISED AUGUST 15, 2003. THE FINS 2008 LINE WAS DEVELOPED BY DR. PSUTY FOR FINS.

LEGEND:

- 2003 FINS PERMITTED DUNE CREST
- 2008 FINS DUNE CREST
- ▲ MONUMENTS

LANDWARD MOVEMENT OF FINS
2008 DUNE CREST LINE VS
2003 PERMITTED DUNE CREST LINE:
AVERAGE DISTANCE: 20 FT
SALTAIRE AVERAGE DISTANCE: 9 FT
MINIMUM DISTANCE: 0.5 FT
MAXIMUM DISTANCE: 61 FT

0 50 100
Feet
1 inch equals 250 feet



TITLE:

**WESTERN FIRE ISLAND
2003 FINS PERMITTED VS 2008 FINS
DUNE LINE COMPARISON
SALTAIRE SEGMENT**



COASTAL PLANNING & ENGINEERING, INC
2481 NW BOCA RATON BLVD.
BOCA RATON, FL 33431
PH. (561) 391-8102
FAX. (561) 391-9116

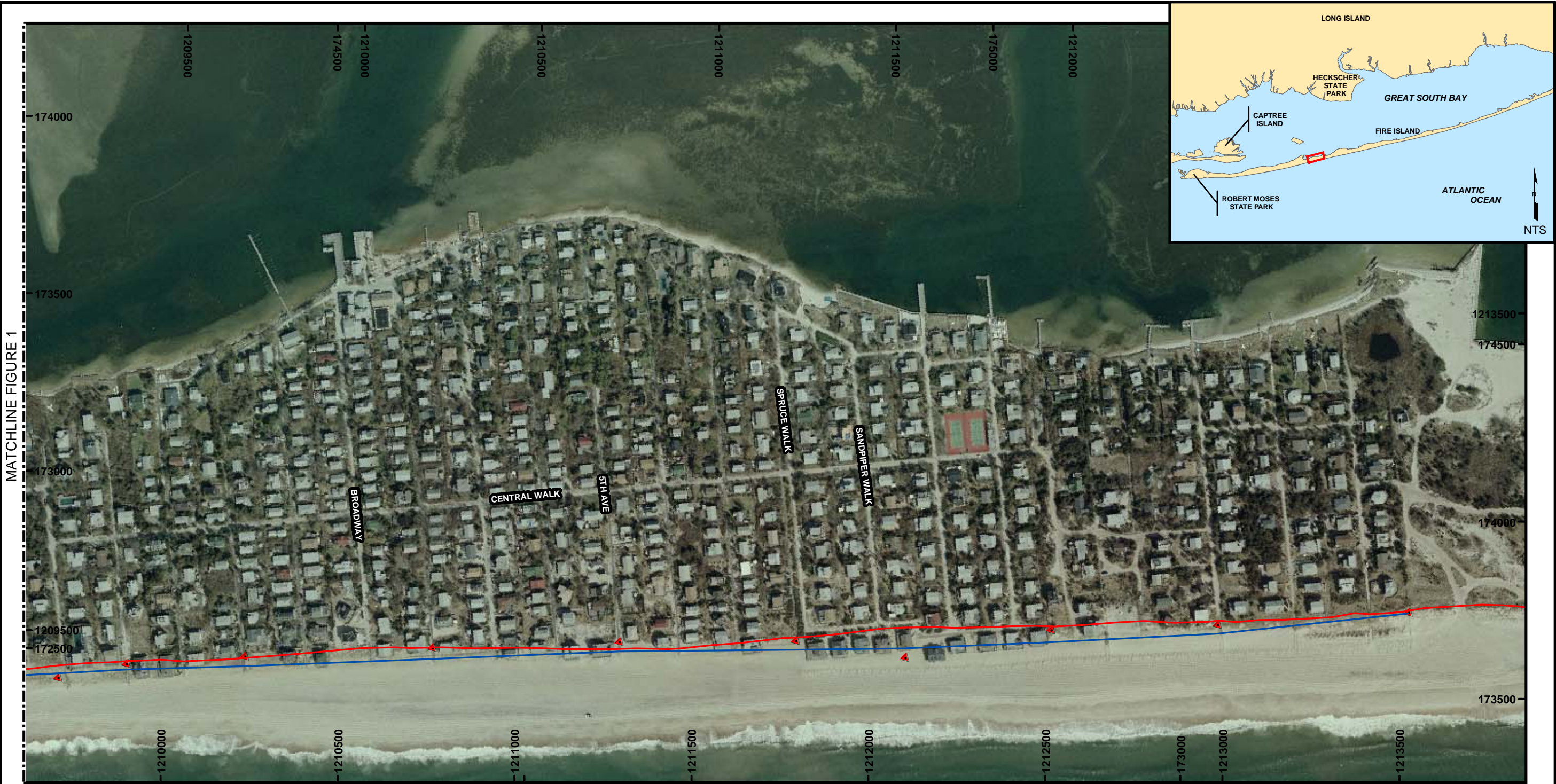
DATE: 01/02/08

BY: HMV

COMM NO: 7300.32

FIGURE 1

MATCHLINE FIGURE 1



NOTES

- 1. COORDINATES ARE IN FEET BASED ON THE NEW YORK LONG ISLAND STATE PLANE COORDINATE SYSTEM, NORTH AMERICAN DATUM OF 1983 (NAD 83).
- 2. AERIAL PHOTOGRAPHY PROVIDED BY NYS OFFICE OF CYBER SECURITY & CRITICAL INFRASTRUCTURE COORIDNATION. DATE FLOWN APRIL 2004.
- 3. TRANSECTS WERE RUN EVERY 100 FT TO DETERMINE AVERAGE, MINIMUM AND MAXIUM DISTANCE BETWEEN THE 2003 AND 2008 DUNE LINES.
- 4. THE FINS 2003 LINE IS BASED ON THE LINE FROM THE PERMITTED PLANS REVISED AUGUST 15, 2003. THE FINS 2008 LINE WAS DEVELOPED BY DR. PSUTY FOR FINS.

LEGEND:

- 2003 PERMITTED FINS DUNE CREST
- 2008 FINS DUNE CREST
- ▲ MONUMENTS

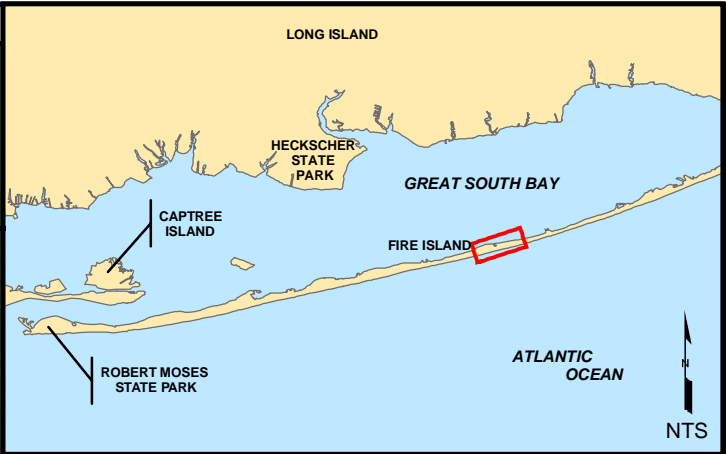
LANDWARD MOVEMENT OF FINS
2008 DUNE CREST LINE VS
2003 PERMITTED DUNE CREST LINE:
AVERAGE DISTANCE: 20 FT
ISLIP AVERAGE DISTANCE: 30 FT
MINIMUM DISTANCE: 0.5 FT
MAXIMUM DISTANCE: 61 FT

0 50100
Feet
1 inch equals 300 feet



TITLE: WESTERN FIRE ISLAND 2003 FINS PERMITTED VS 2008 FINS DUNE LINE COMPARISON TOWN OF ISLIP SEGMENT			
 COASTAL PLANNING & ENGINEERING, INC 2481 NW BOCA RATON BLVD. BOCA RATON, FL 33431 PH. (561) 391-8102 FAX.(561) 391-9116			
DATE: 01/02/08	BY: HMV	COMM NO: 7300.32	FIGURE 2

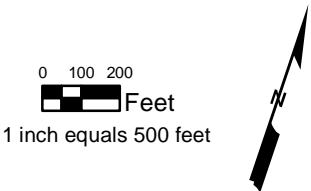
G:\NewYork\FireIsland\730032_FIRE_ISLAND\MXD\DAVIS_PARK_DUNE_COMPARISON_040108.mxd




- NOTES**
- 1. COORDINATES ARE IN FEET BASED ON THE NEW YORK LONG ISLAND STATE PLANE COORDINATE SYSTEM, NORTH AMERICAN DATUM OF 1983 (NAD 83).
 - 2. AERIAL PHOTOGRAPHY PROVIDED BY NYS OFFICE OF CYBER SECURITY & CRITICAL INFRASTRUCTURE COORDINATION. DATE FLOWN APRIL 2004.
 - 3. TRANSECTS WERE RUN EVERY 100 FT TO DETERMINE AVERAGE, MINIMUM AND MAXIMUM DISTANCE BETWEEN THE 2003 AND 2008 DUNE LINES.
 - 4. THE FINS 2003 LINE IS BASED ON THE LINE FROM THE PERMITTED PLANS REVISED AUGUST 15, 2003. THE FINS 2008 LINE WAS DEVELOPED BY DR. PSUTY FOR FINS.

- LEGEND:**
- 2003 FINS PERMITTED DUNE LINE
 - 2008 FINS DUNE CREST
 - ▲ MONUMENTS

LANDWARD MOVEMENT OF FINS
2008 DUNE CREST LINE VS
2003 PERMITTED DUNE CREST LINE:
AVERAGE DISTANCE: 7 FT
MINIMUM DISTANCE: 0.03 FT
MAXIMUM DISTANCE: 18 FT



TITLE: FIRE ISLAND PINES 2003 FINS PERMITTED VS 2008 FINS DUNE LINE COMPARISON			
 COASTAL PLANNING & ENGINEERING, INC 2481 NW BOCA RATON BLVD. BOCA RATON, FL 33431 PH. (561) 391-8102 FAX.(561) 391-9116			
DATE: 01/02/08	BY: HMV	COMM NO: 7300.32	FIGURE 1