



PRESENTATION OF FINDINGS

MANASSAS BATTLEFIELDS

VIEWSHEDS PLAN

**Manassas National Battlefield Park
Visitors Center
June 19, 2008**

Funding & Management

- The project is funded by a grant from the National Park Service's (NPS) American Battlefield Protection Program (ABPP).
- Manassas National Battlefield Park (MNBPP) staff and Planning staff are jointly managing the grant, with the County acting as the grant manager on behalf of MNBPP.

Introductions

Prince William County

- Justin Patton - Archeologist

National Park Service

- Ray Brown – Cultural Resources Manager
- Pat Jones – Chief of Interpretation
- Bryan Gorsira – Natural Resources Manager

Consultant Team

- The Walker Collaborative*
 - Nashville, Tennessee
- Phil Walker

- History Associates, Inc.*
 - Rockville, Maryland
- Garry Adelman
- Tom Danninger

- Land Planning & Design Associates*
 - Charlottesville, Virginia
- Julie Basic

Steering Committee

- Manassas National Battlefield Park
- American Battlefield Protection Program
- Bull Run Civil War Roundtable
- Friends of Manassas National Battlefield Park
- Civil War Preservation Trust
- Prince William County Planning Office
- Prince William Conservation Alliance
- Prince William County Historical Commission
- Fairfax County-Cultural Resources Management and Protection Program
- Loudoun County Planning Office

Roles & Responsibilities

- **Steering Committee**
 - Provide guidance to consultant
 - Assist in viewshed identification
 - Review project reports
 - Communicate with respective constituent community
- **Consultant**
 - Conduct public meetings
 - Research and prepare project reports, GIS products
- **PWC and MNBP**
 - Project Management

Project Purpose

*“... preparation of a plan
(viewshed preservation plan)
to preserve critical
viewsheds associated with
the Civil War Battlefields of
First and Second Manassas.”*

- County's RFP document

Yes

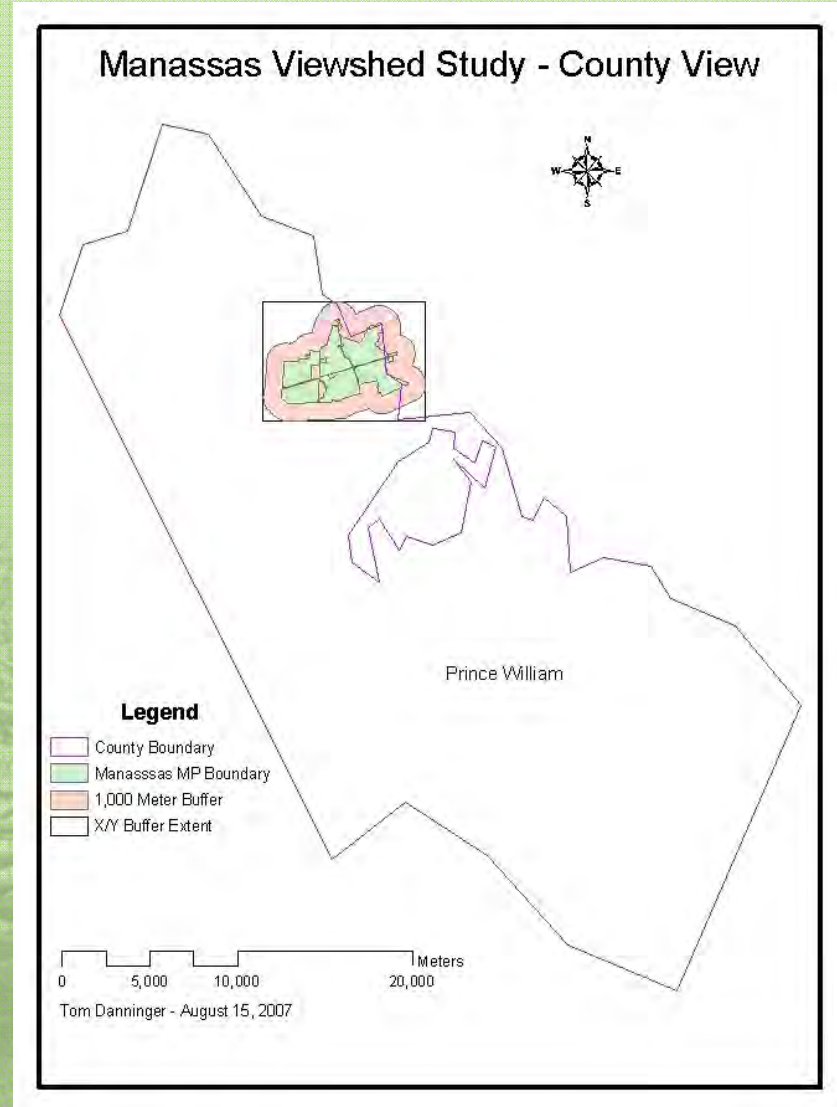
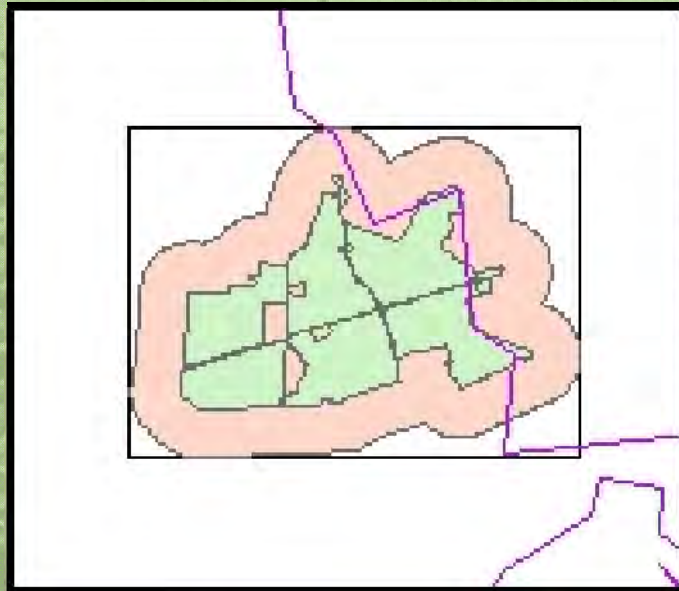


No

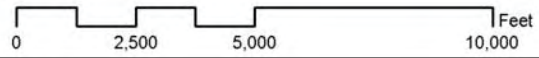
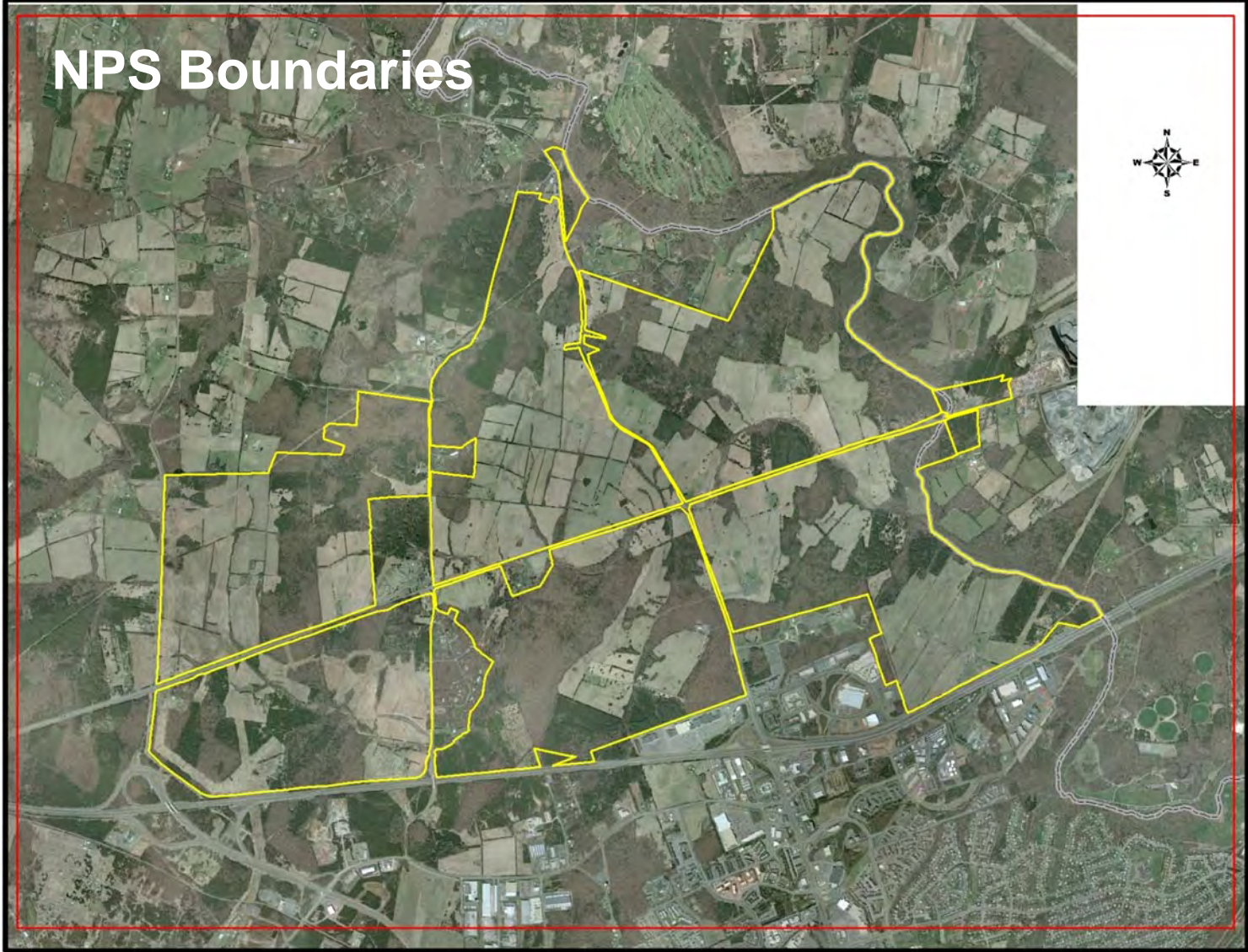


Study Area

Within and beyond
the NPS holdings

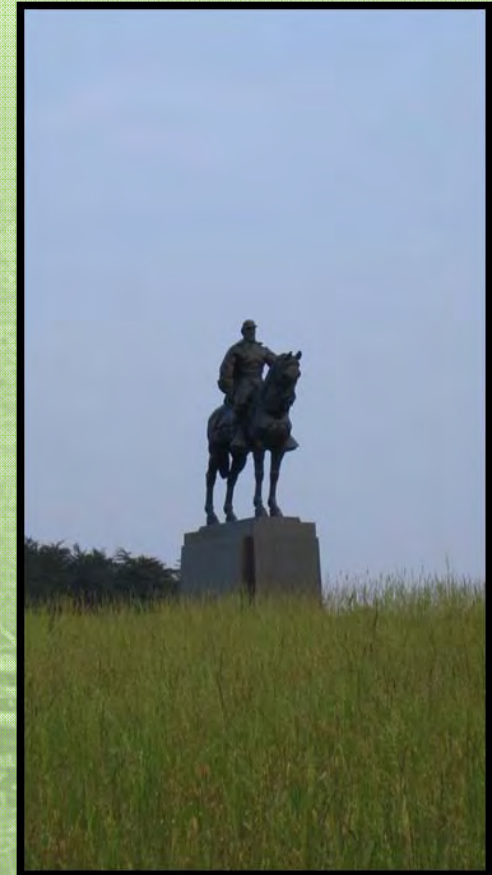


NPS Boundaries



Progress

- Consultant Selection (June 2007)
- Steering Committee Selection (August 2007)
- Public Kick-Off Meeting at Henry Hill Visitor Center (August 28, 2007)
- Selection of Prospective Viewsheds (September 2007-January 2008)
- Fieldwork Completed (March 2008)



Battle Overview: First Manassas

July 21, 1861

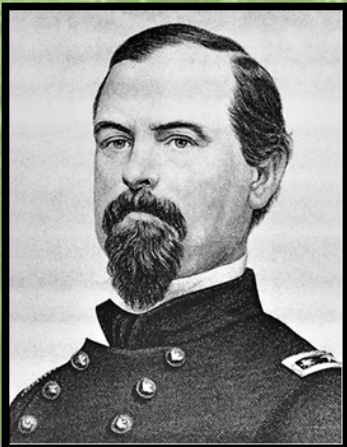
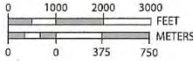
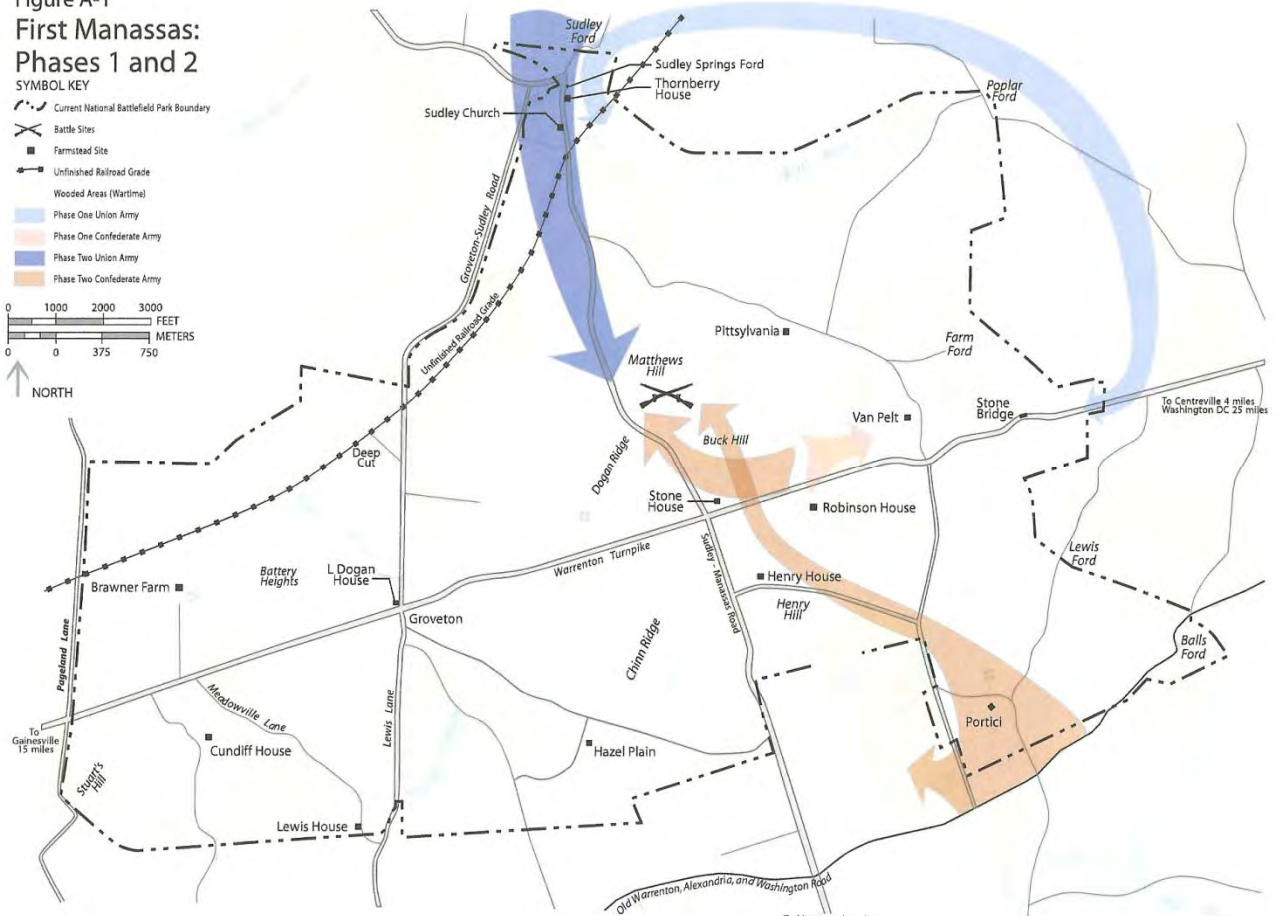


Figure A-1
First Manassas:
Phases 1 and 2

- SYMBOL KEY
- Current National Battlefield Park Boundary
 - Battle Sites
 - Farmstead Site
 - Unfinished Railroad Grade
 - Wooded Areas (Wartime)
 - Phase One Union Army
 - Phase One Confederate Army
 - Phase Two Union Army
 - Phase Two Confederate Army



NORTH



U.S. Department of the Interior • National Park Service
DSC • October 2005 • 379-20122

Battle Overview: First Manassas

July 21, 1861

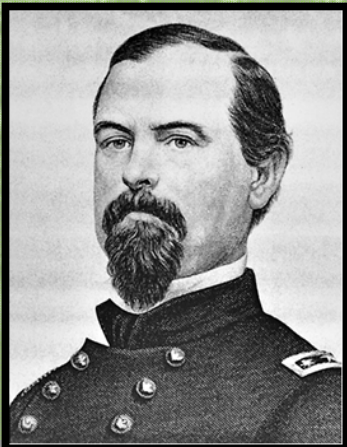


Figure A-2
First Manassas:
Phase 3 and Union Retreat



Battle Overview: Second Manassas

August 28-30, 1862

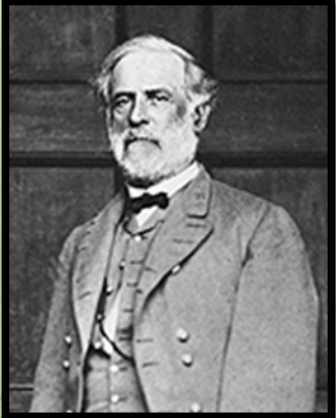
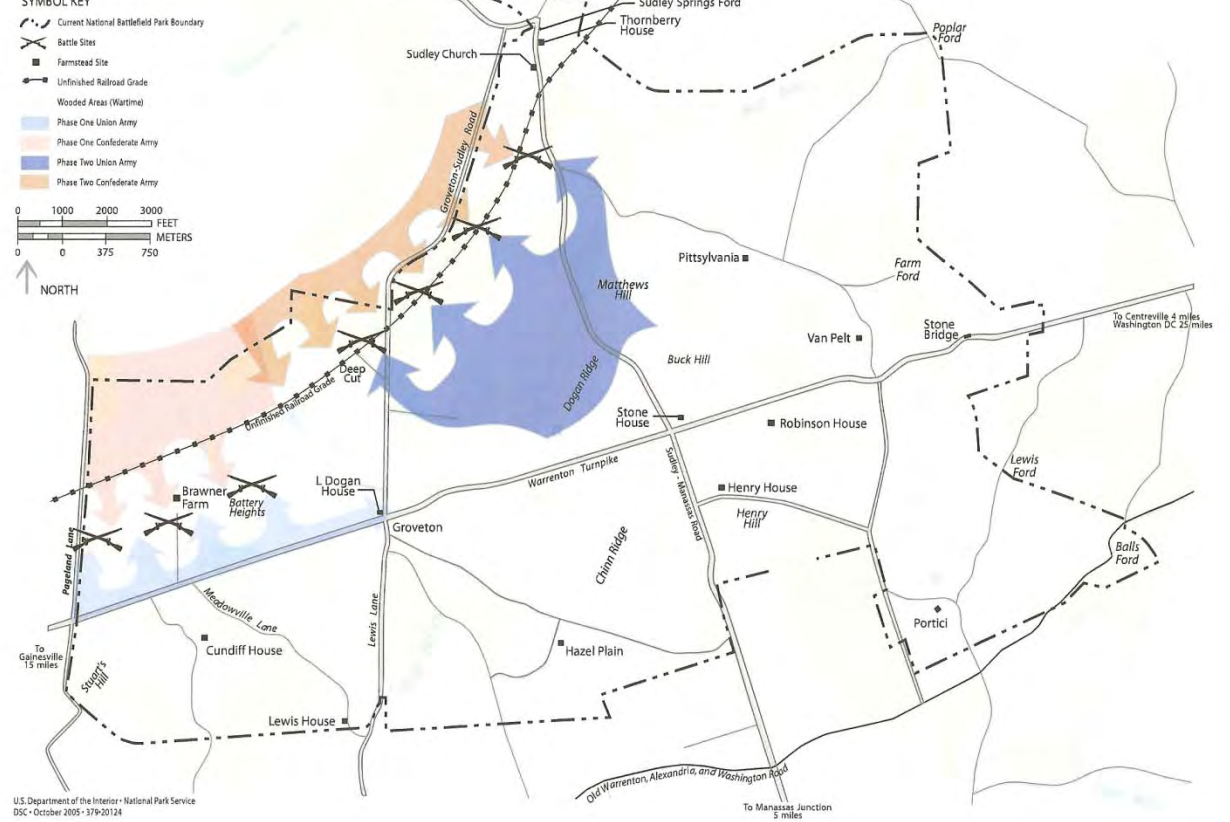


Figure A-3
Second Manassas:
Phases 1 and 2



Battle Overview: Second Manassas

August 28-30, 1862

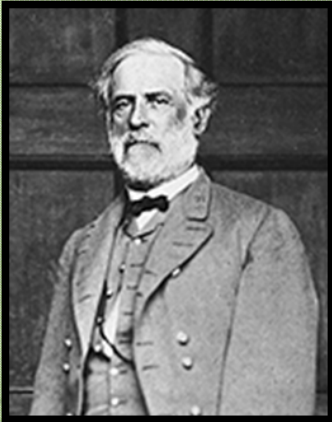


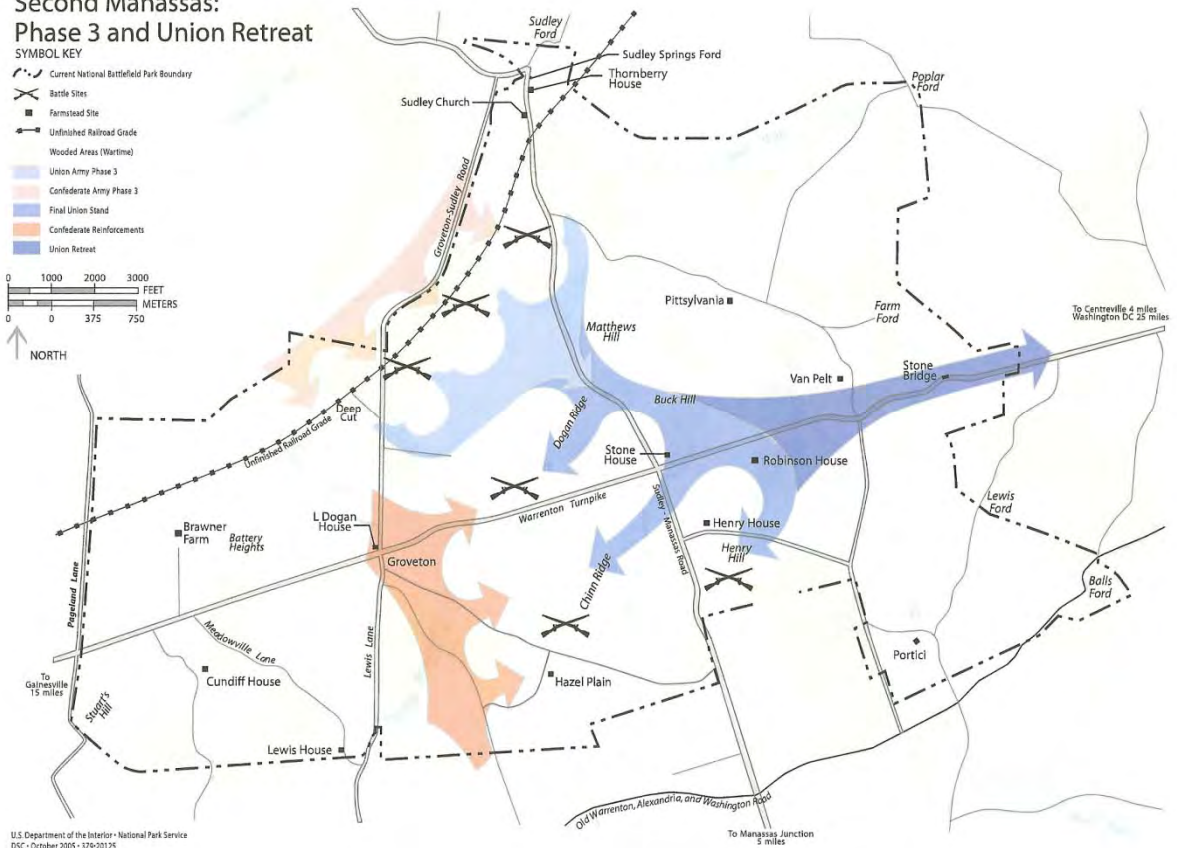
Figure A-4
Second Manassas:
Phase 3 and Union Retreat

SYMBOL KEY

- Current National Battlefield Park Boundary
- Battle Sites
- Farmstead Site
- Unfinished Railroad Grade
- Wooded Areas (Wartime)
- Union Army Phase 3
- Confederate Army Phase 3
- Final Union Stand
- Confederate Reinforcements
- Union Retreat

0 1000 2000 3000
0 375 750
FEET
METERS

NORTH



U.S. Department of the Interior • National Park Service
DSC • October 2005 • 379-20125

Battlefield Landscape: Then

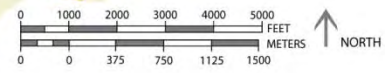
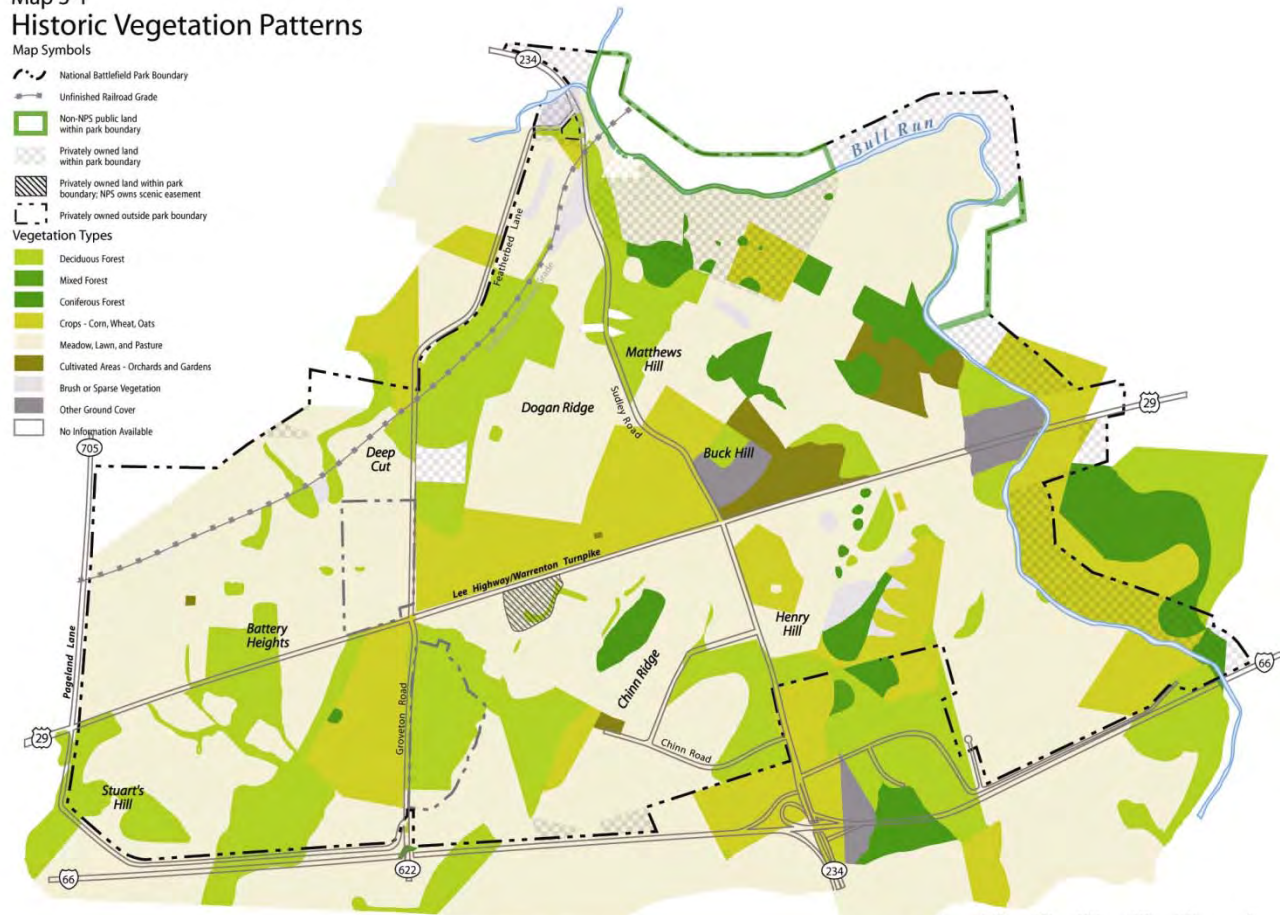
Map 3-1
Historic Vegetation Patterns

Map Symbols

- National Battlefield Park Boundary
- Unfinished Railroad Grade
- Non-NPS public land within park boundary
- Privately owned land within park boundary
- Privately owned land within park boundary, NPS owns scenic easement
- Privately owned outside park boundary

Vegetation Types

- Deciduous Forest
- Mixed Forest
- Coniferous Forest
- Crops - Corn, Wheat, Oats
- Meadow, Lawn, and Pasture
- Cultivated Areas - Orchards and Gardens
- Brush or Sparse Vegetation
- Other Ground Cover
- No Information Available



U.S. Department of the Interior • National Park Service
DSC - October 2005 • 379-20117

Battlefield Landscape: Now/Proposed

Map 4-1
Proposed Forest Cuts and
Reforestation Sites

SYMBOL KEY

-  National Battlefield Park Boundary
-  National Battlefield Park Land
-  Unfinished Railroad Grade
-  Current Forested Areas
-  Proposed Forest Cuts (Alternative B)
-  Proposed Forest Cuts (Alternative C)
-  Proposed Reforestation (Alternative B)
-  Non-NPS public land within park boundaries
-  Privately held land within park boundaries
-  Privately held land within park boundaries; NPS owns scenic easement
-  Privately owned land outside park boundary



U.S. Department of the Interior • National Park Service
DSC - October 2005 • 379-20121



Viewsheds: Public Vantage Points (PVPs)

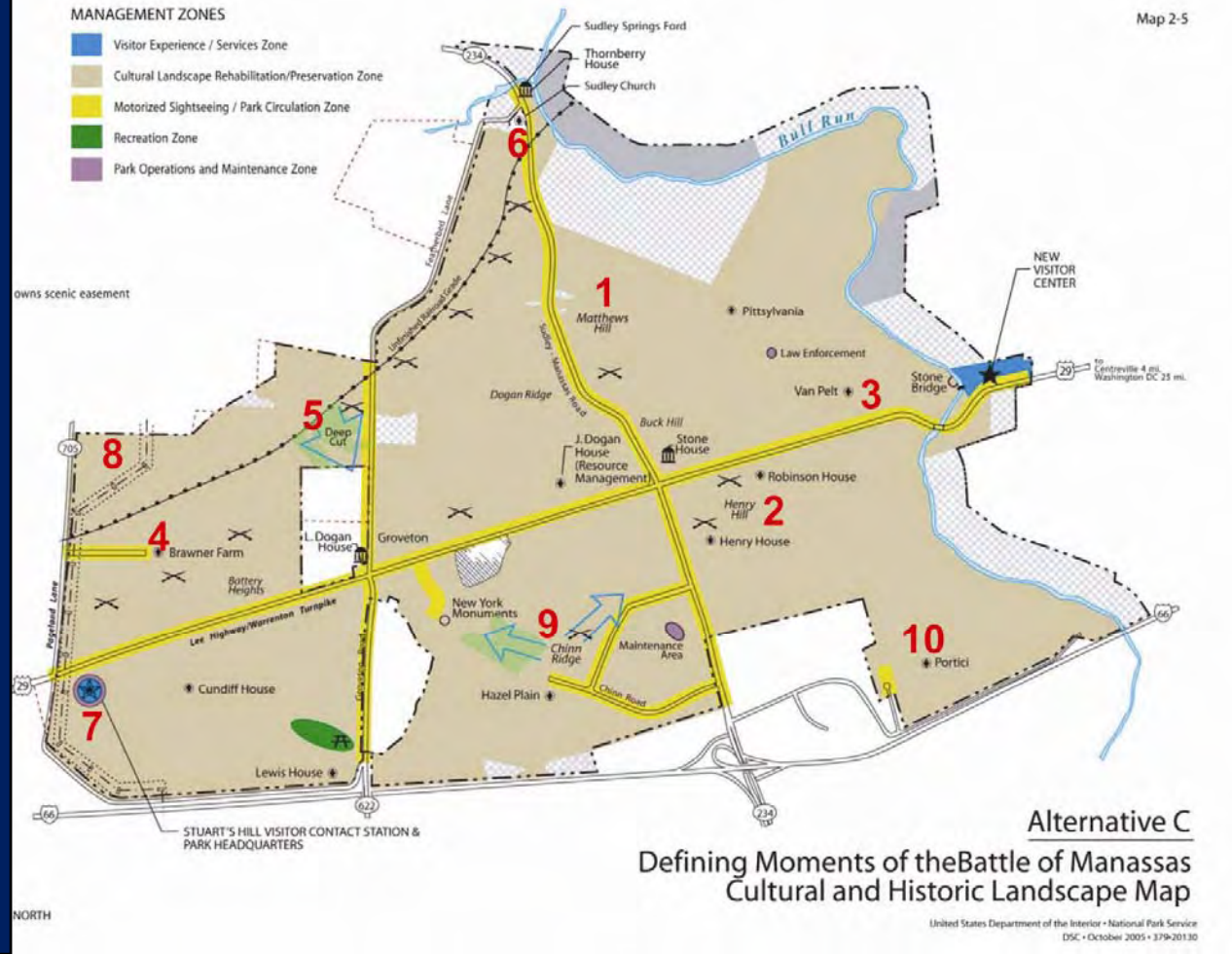
Selection Principles

- 1) High elevation to include the optimal amount of relevant land area
- 2) Most historically significant lands relative to the two battles
- 3) Reasonable public accessibility – currently or potential
- 4) Both battles should both be sufficiently represented
- 5) Areas selected should not be too close together

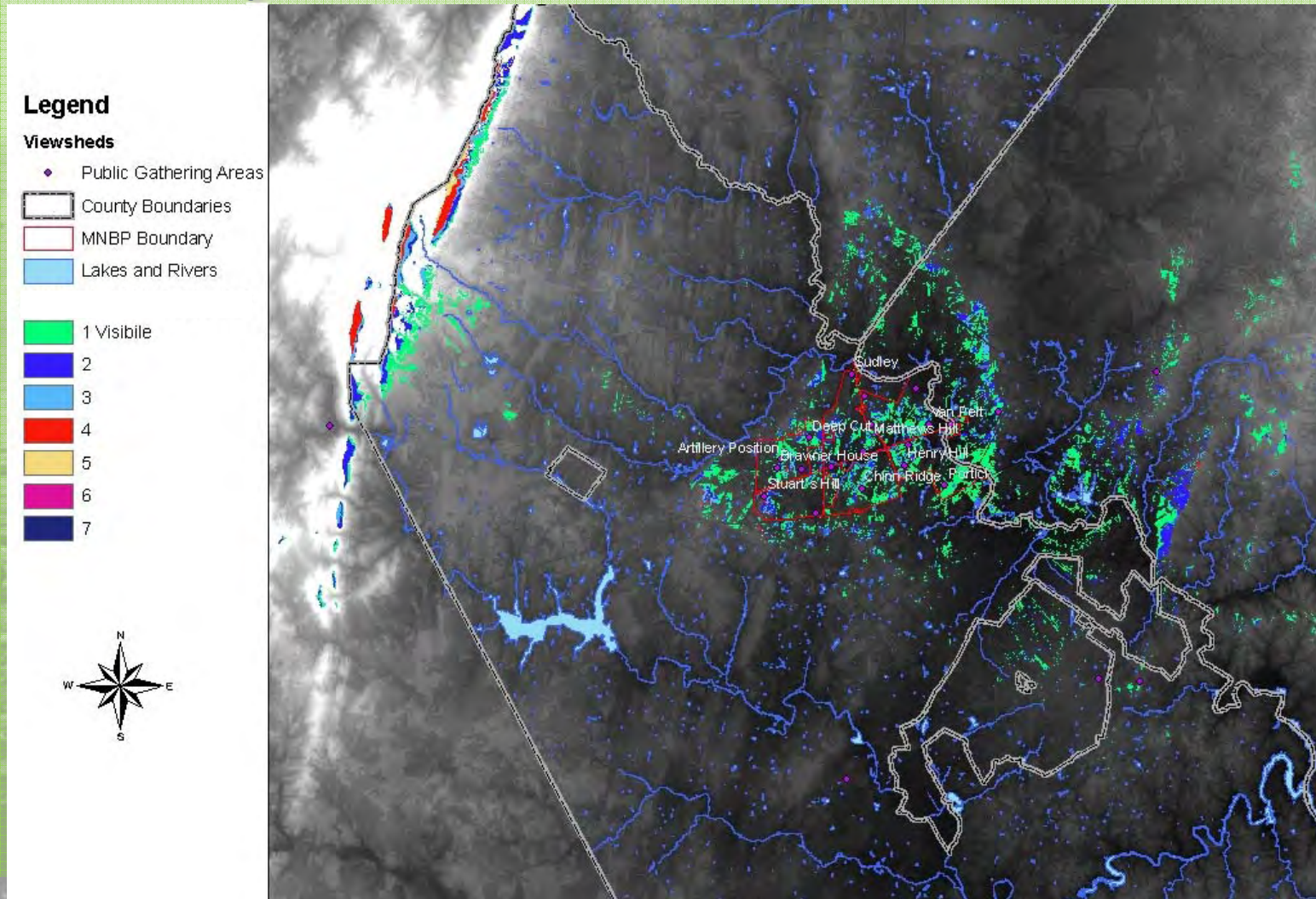


Viewsheds: Public Vantage Points (PVPs)

- 1) Matthews Hill
- 2) Henry Hill
- 3) Van Pelt
- 4) Brawner House
- 5) Deep Cut
- 6) Sudley
- 7) Stuart's Hill
- 8) Artillery Position
- 9) Chinn Ridge
- 10) Portici



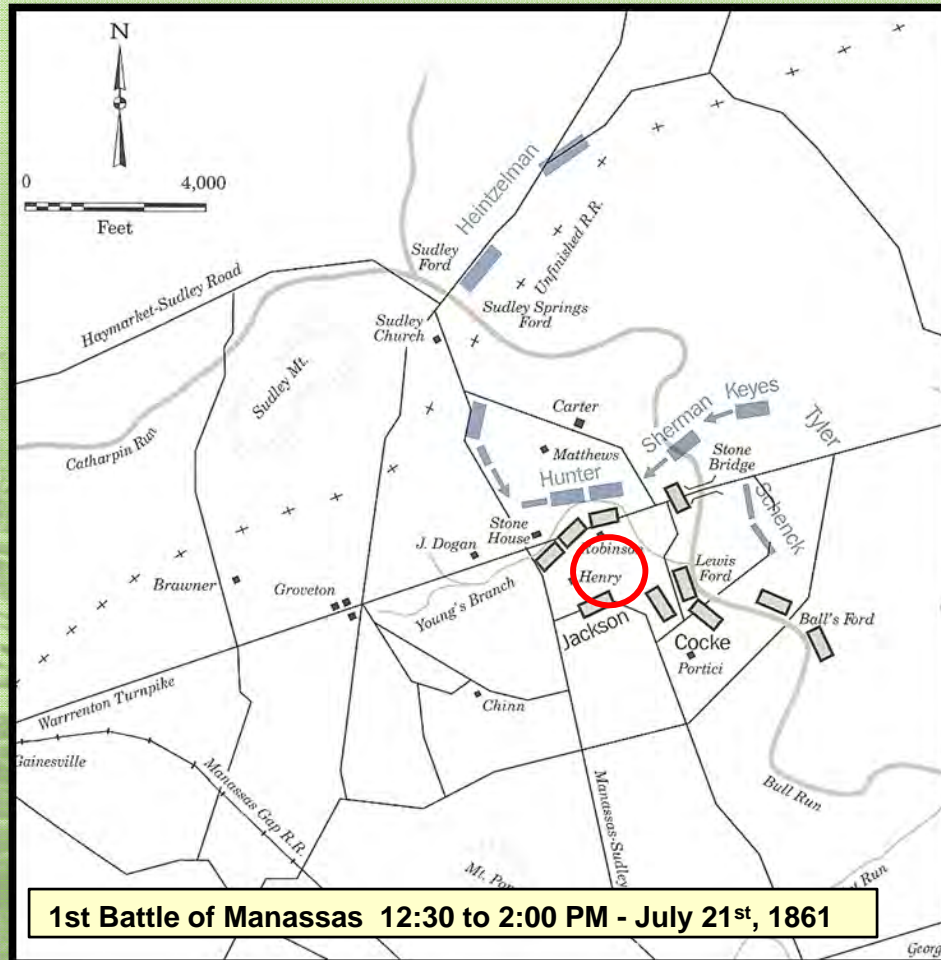
Visibility from PVPs



Example PVP: Henry Hill



Artillery fire left Judith Carter Henry dead and her house severely damaged.



1st Battle of Manassas 12:30 to 2:00 PM - July 21st, 1861



View toward Henry Hill from near the Robinson House (Historic Viewshed D), 1862.



The Henry House chimney is visible at center. The woods at left are along Sudley Road.



The remains of the Henry House looking north, 1862. See detail below.



This detail of a variant view shows the horizon and the Carter House "Pittsylvania" at right center.



Two views of graves on Henry Hill, 1862. Recent scholarship suggests that these views were recorded in close proximity to the viewshed point. If so, the woods at right in the photos above border Sudley Road.



View south from the Warrenton Turnpike to Henry Hill, c. 1940.



View southeast from near the viewshed point looking toward the Confederate position, 1896.

40' Vegetation Viewshed - Henry Hill

Legend

