

# Medgar and Myrlie Evers Home National Monument

June 2021

National Park Service  
U.S. Department of the Interior



## Dear Neighbors, Friends, and Partners,

I am excited to announce the inaugural planning effort for the Medgar and Myrlie Evers Home National Monument following its establishment as a new unit of the national park system in December 2020. Medgar and Myrlie Evers were partners in the struggle for civil rights. On June 12, 1963, the assassination of Medgar Evers in the carport of their home at 2332 Margaret W. Alexander Drive in Jackson, Mississippi, became the first murder of a nationally significant leader of the national civil rights movement, and it became a catalyst for passage of the Civil Rights Act of 1964. Myrlie Evers has continued to promote issues of racial equality and social justice. The Medgar and Myrlie Evers Home National Monument has been created to preserve, protect, and interpret for the benefit of present and future generations resources associated with the pivotal roles of Medgar and Myrlie Evers in the American civil rights movement.

This summer, a National Park Service planning team is beginning work on the first planning effort for this national treasure with the development of a foundation document. This planning effort will help further identify what is most important about the park and what is most needed moving into the future.

Your voice is important. I welcome you to play a role in charting the park's future by sharing your thoughts on what is most important about Medgar and Myrlie Evers National Monument, its relationship to the broader neighborhood, and its most pressing challenges and greatest opportunities. We are also looking to work with local leadership in Jackson to ensure the National Park Service can be an effective

partner with the community. The outcomes of this engagement period will be integrated into the document and will help chart a path forward in the planning and development process for the site.

This summer, the NPS planning team will hold a virtual (online) meeting and a local in-person meeting to explain this planning process and answer your questions. Please visit the project website at <https://parkplanning.nps.gov/MEMYFoundation> for details about upcoming meetings. We will hold in-person public meetings when it safe to do so as determined by guidance set forth by the United States (US) Centers for Disease Control and Prevention and the US Department of Interior. Please visit the project website mentioned above for the latest information about upcoming meetings.

You can contribute to this effort by submitting your comments online on the project website at <https://parkplanning.nps.gov/MEMYFoundation> or by mailing your comments. The open comment period is July 1 – August 31, 2021. Please see the back of this newsletter for details on how to submit feedback, then visit the park website at [www.nps.gov/memy](http://www.nps.gov/memy) to learn more about the park.

I appreciate your interest in Medgar and Myrlie Evers Home National Monument and look forward to working with you to chart its future.

Sincerely,

Keena Nichelle Graham, Superintendent  
Medgar and Myrlie Evers Home National Monument

## Contents

This newsletter for the Medgar and Myrlie Evers Home National Monument includes:

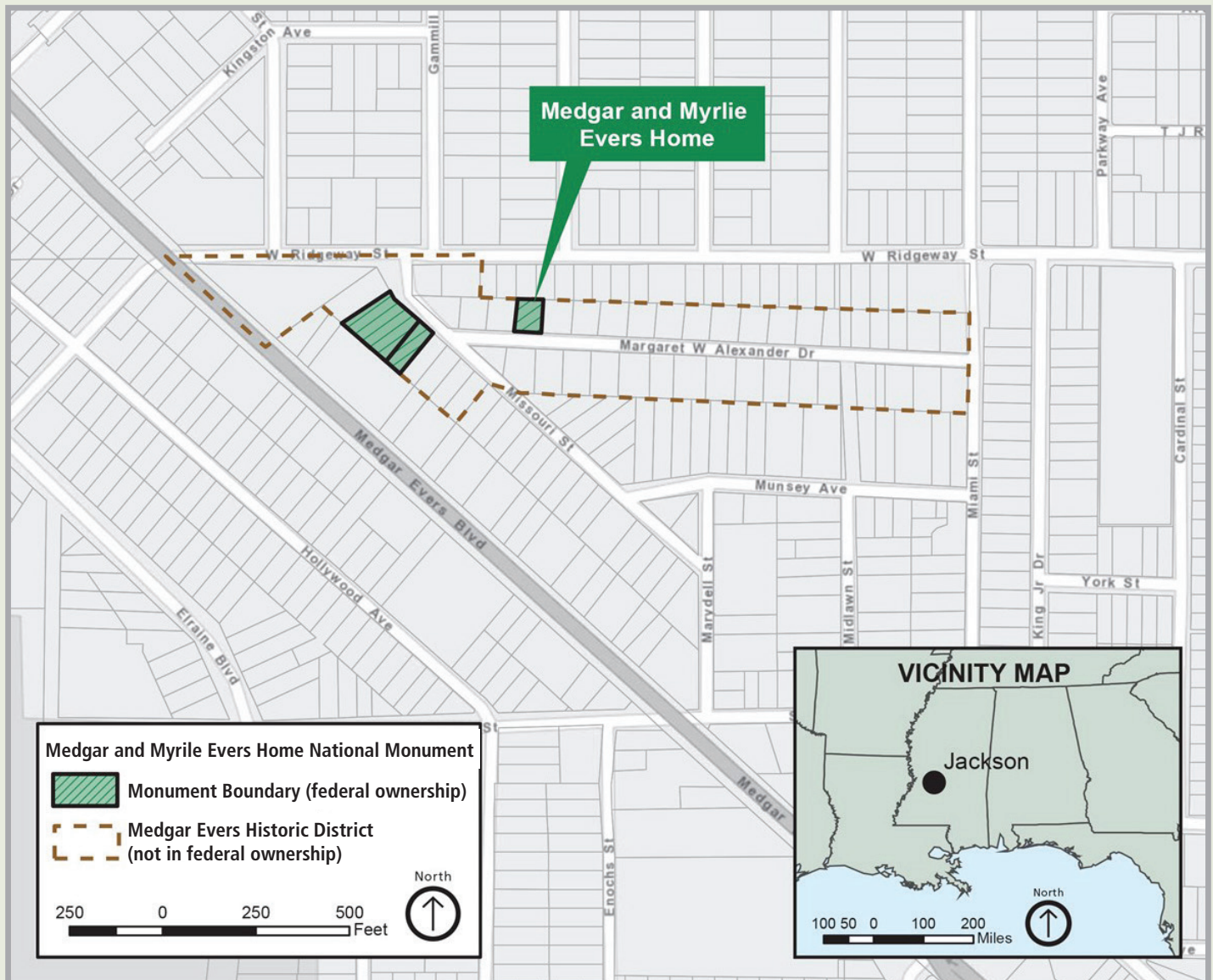
- What is a Foundation Document
- Key Questions for Feedback
- How to Respond
- Stay Involved

## About the National Park Service



The National Park Service preserves unimpaired the natural and cultural resources and values of the national park system for the enjoyment, education, and inspiration of this and future generations. The National Park Service cooperates with partners to extend the benefits of natural and cultural resource conservation and outdoor recreation throughout this country and the world. The National Park Service is a bureau within the Department of the Interior and manages more than 400 park units that comprise the national park system. Administration of park units occurs in many ways, from traditional units that are federally managed to non-traditional units that rely on partnerships and may have little, if any, federal landownership.

## Site Map





## What is a Foundation Document?

A foundation document guides the future planning and management of a national park. It articulates the park's purpose and significance, its most important resources and values, and the interpretive themes that tell a park's important stories. Although the foundation document is not a decision-making document and does not include actions or management strategies, it will describe a shared understanding of what is most important about the park. In this capacity, the foundation document will provide the underlying guidance for the future management and planning decisions at Medgar and Myrlie Evers Home National Monument. Over time, it will serve as constant reference for what is critical to

the park so that the park's most critical resources and values are addressed before turning to items that may also be important but are not critical to upholding the park purpose, significance, and fundamental resources and values.

The foundation document is also the first important step toward carefully considering the Medgar and Myrlie Evers Home National Monument's future planning and information needs. In this capacity, it will assess what is most needed to open the park to the public. For this, the National Park Service seeks public and community input for making the site operational and ready for visitation as a national park unit.

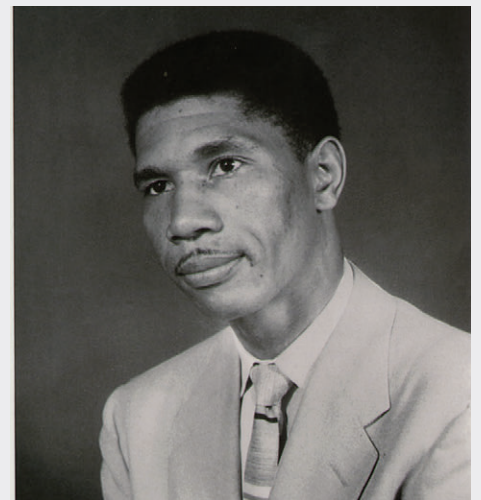


Photo credits: Medgar Wiley and Myrlie Beasley Evers Papers at the Mississippi Department of Archives and History.

## Key Questions for Feedback



1. What is most important about Medgar and Myrlie Evers Home National Monument? What ideas or ideals does it represent? What should visitors learn when they visit?
2. What are the biggest challenges facing the National Park Service in setting up the park?
3. What are the biggest opportunities for the National Park Service in setting up the Medgar and Myrlie Evers Home National Monument? What is your vision for the new park?
4. Do you have any other ideas or information you would like to share with the National Park Service about the Medgar and Myrlie Evers Home National Monument? If you have any stories, old photos, or memories about the site that you are willing to share, please let us know and provide us with your contact information.

## How to Respond

Your feedback can be submitted in the following two ways. The comment period will run from July 1, 2021 to August 31, 2021.

1. Submit your comments online at <https://parkplanning.nps.gov/MEMYFoundation>  
Click on “Open for Comment” to respond to the four questions above.
2. Mail your comment card or letters to:  
**ATTN: Carrie Miller – MEMY Foundation**  
**Denver Service Center Planning Division**  
**National Park Service**  
**12795 West Alameda Parkway**  
**Denver, CO 80225-0287**

## Stay Involved

- Visit the project website for updates:  
<https://parkplanning.nps.gov/MEMYFoundation>
- Attend a public meeting to learn more from the NPS planning team. Visit the project website, <https://parkplanning.nps.gov/MEMYFoundation>, and click on the “Meeting Notices” link for information about upcoming in-person or virtual meetings.



Photo credits: Medgar Wiley and Myrlie Beasley Evers Papers at the Mississippi Department of Archives and History.



Photo credits: Medgar Wiley and Myrlie Beasley Evers Papers at the Mississippi Department of Archives and History.

Thank you for your interest in the Medgar and Myrlie Evers Home National Monument!