



## Potomac Park Levee Project



*US Army Corps of Engineers*



*National Capital Planning Commission*



*District of Columbia*

# Agenda

1. 6:00pm – 6:30pm

OPEN HOUSE

2. 6:30pm – 7:15pm

PRESENTATION

3. 7:15pm – 8:00pm

QUESTION & ANSWER

Project Background

Project Timeline

NEPA & Section 106 Process

Alternatives

Comment





# Background





# Background

AREA OF IMPACT



This boundary delineates the area of the District that is at risk for flooding, according to the USACE, if the Potomac Park levee fails. The National Park Service (NPS), at present and by agreement, is the federal agency responsible for the closure of the levee at 17th street.



# Background

PROJECT TEAM



## National Park Service (NPS)

National Capital Region  
National Mall and Memorial Parks



**US Army Corps of Engineers (USACE)**  
**National Capital Planning Commission (NCPC)**  
**District of Columbia**



**General Services Administration (GSA)**

**Commission of Fine Arts (CFA)**

**Smithsonian Institution**

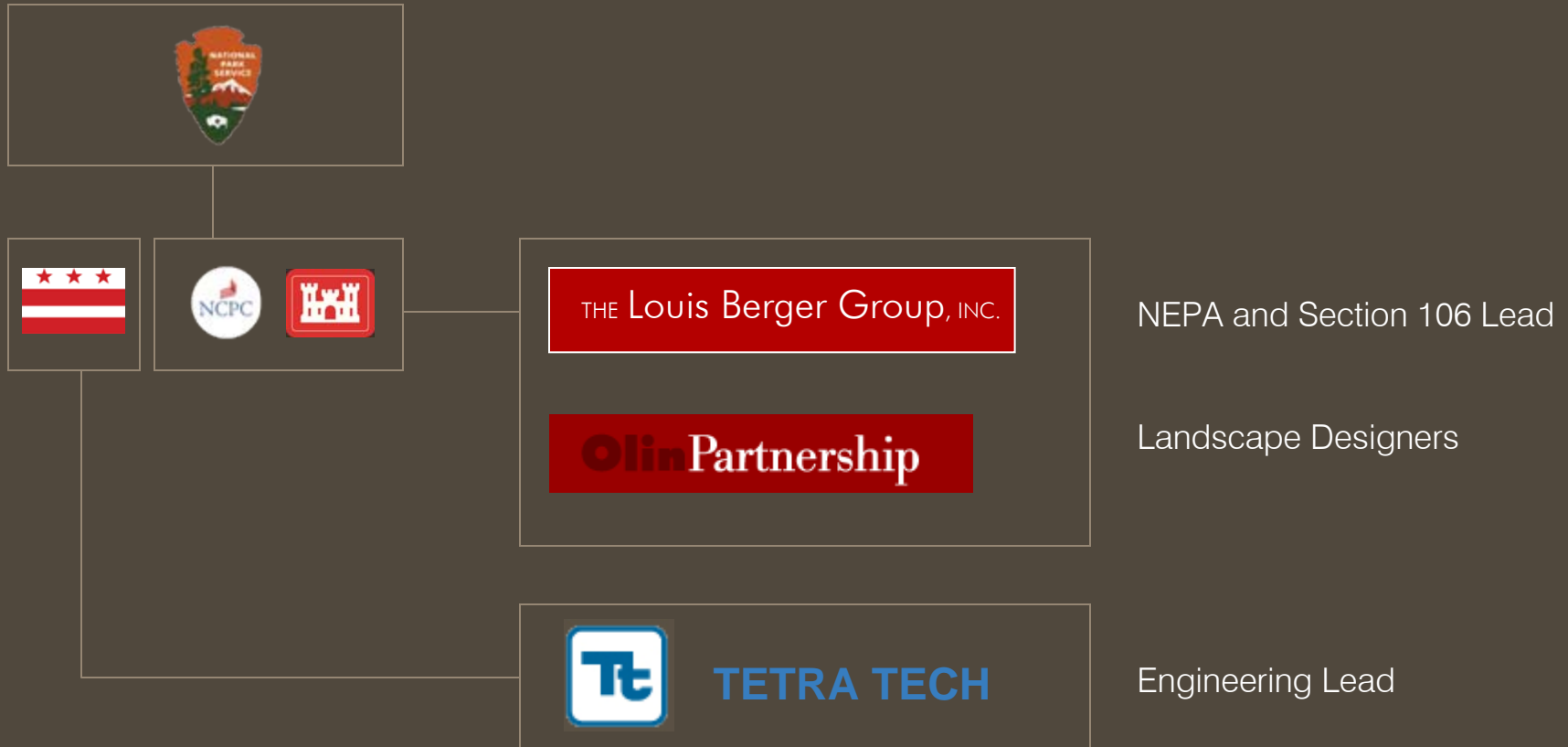
**Washington Metropolitan Area Transit Authority (WMATA)**

**DC Water and Sewer Authority (DC WASA)**



# Background

## CONSULTANT TEAM





# Background

## HISTORY OF THE PROJECT

Washington, DC is subject to flooding when the Potomac and Anacostia Rivers receive overflow their stream banks, and from a tidal surge from the Chesapeake Bay, usually a hurricane, due to the winds of the storm and low atmospheric pressure



This is an image of the Washington Navy Yard during the 1936 Potomac River Flood



# Background

## HISTORY OF THE PROJECT

# 1936

March Flood

Flood Control Act of 1936

# 1939

Flood levee components completed:

- concrete retaining wall along the length of the Reflecting Pool
- substantial fill from 17th Street to the raised earthen mound of the Washington Monument

# 1942

October Flood

# 1946

Flood Control Act





# Background

## HISTORY OF THE PROJECT

# 1990

Section 106 finding of no adverse effect for the preferred alternatives by the DC HPO

# 1992

EA for Modifications to Washington, DC and Vicinity Flood Control Project

# 1996

Supplemental EA for additional modifications to Washington, DC and Vicinity Flood Control Project

# 2007

Project was re-evaluated and failed by the USACE

September, FEMA proposed modifying the base 100 year and 500 year floodplains



## Regulations

### NEPA

National Environmental Policy Act

The National Environmental Policy Act of 1969, as amended

(42 U.S.C. 4321 et seq. )

### CEQ

Council on Environmental Quality

"Regulations for Implementing the Procedural Provisions of NEPA" (40 CFR 1500-1508).

### DO-12

Department of the Interior, Director's Order 12

Director's Order #12: Conservation Planning, Environmental Impact Analysis, and Decision-making

## Process

1. Notice of Intent
2. Define Purpose & Need
3. Data Collection, Begin resource inventory and analysis
4. Define Preliminary Alternatives
5. Internal and External Scoping to introduce project and identify issues
6. Public Scoping meeting to introduce alternatives
7. Refine Alternatives
8. Affected Environment
9. Environmental Consequences
10. Prepare draft Environmental Assessment
11. Internal Agency review of draft Environmental Assessment
12. Release Environmental Assessment for 30-day Public Comment Period
13. Public Comment Period
14. Decision Document



# Purpose & Need



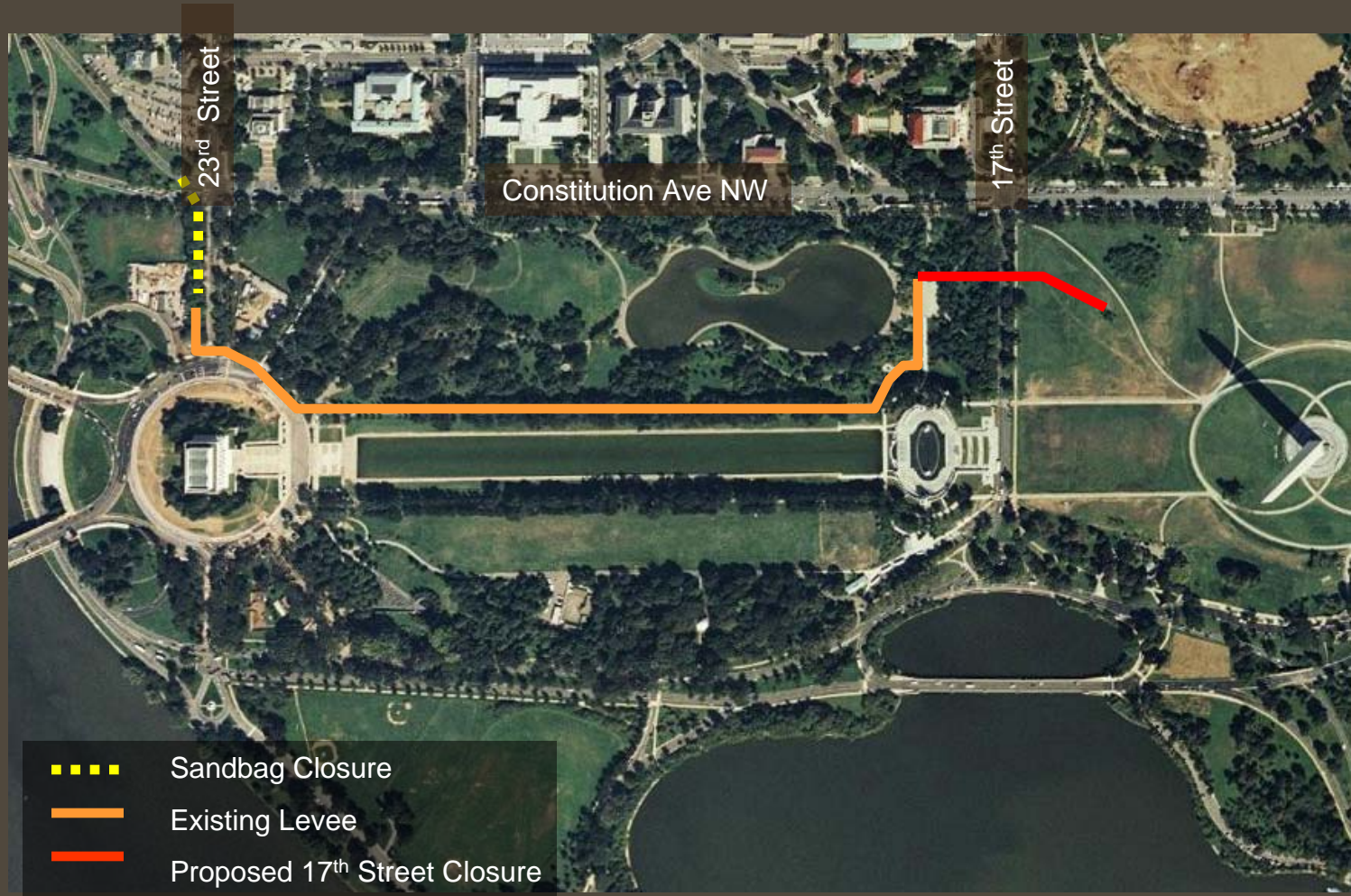
The purpose of this action is to provide reliable flood protection to a portion of the monumental core and downtown Washington D.C. in a manner that respects the resources and values of the National Mall.





# Purpose & Need

BACKGROUND



The following objectives were identified by the planning team for this project:

- Protect downtown Washington D.C and the monumental core in the event of a 100-year storm, thereby meeting the National Flood Insurance Program requirements as administered by FEMA (interim level of protection).
- Ensure that the selected design can be easily modified or enhanced to meet the 185-year flood protection requirements (authorized or permanent level of protection)
- Minimize adverse impacts to the cultural landscapes, historic structures, and other cultural resources of the project area.
- Minimize adverse impacts to the viewsheds of the monumental core and the visual quality of the project area.
- Minimize disruption to visitor use and experience in the monumental core.
- Minimize adverse impacts to park management and operations and provide the NPS with the most effective and reliable closure system in advance of a flood event.
- Avoid additional costs of insurance or construction to property owners in the project area.
- Minimize disruption to traffic in the downtown Washington D.C. project area during construction



- Floodplains
- Vegetation (trees)
- Land use/Socioeconomics
- Transportation
- Aesthetics
- Archeology Historic plans and structures
- Cultural landscapes
- Visitor use and experience
- Utilities and infrastructure
- Park management and operations
- Public safety





# Section 106

## Regulations

**NHPA** National Historic Preservation Act

Section 106 regulations,  
36 CFR Part 800

## Process

1. Define Undertaking/ Initiate Sec 106
2. Identify Consulting Parties
3. Plan to Involve the Public
4. Define Area of Potential Effect (APE)
5. Identify Significant Cultural Resources in APE
6. Assess Effects on Significant Resources
7. Identify “Adverse” Effects, if any
8. Resolve Adverse Effects
9. Memorialize in an Agreement Document



# Section 106

NATIONAL REGISTER HISTORIC DISTRICTS





# Section 106

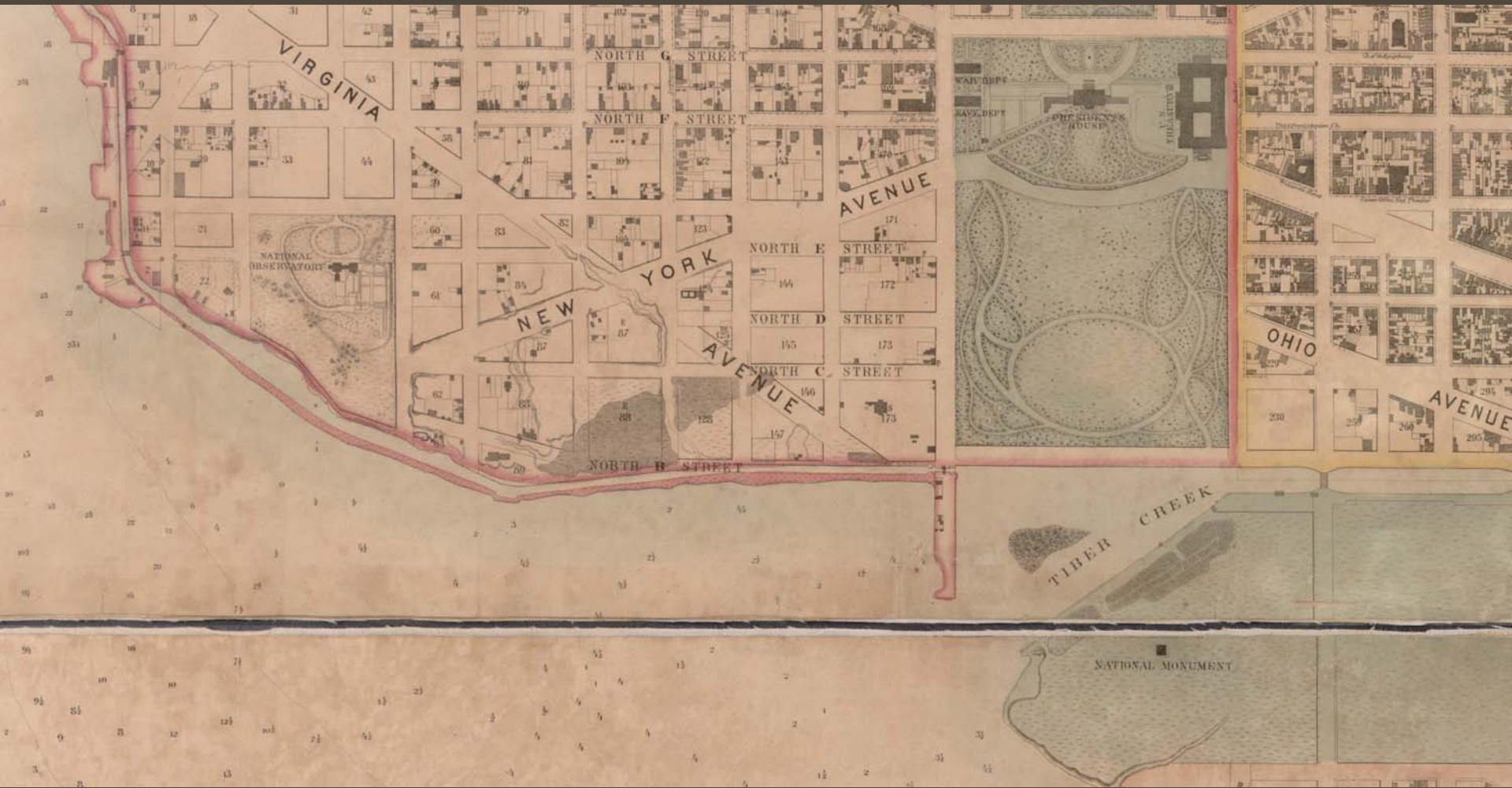
CULTURAL LANDSCAPES





# Section 106

THE BOSCHKE MAP OF 1857



# Section 106

PRELIMINARY AREA OF POTENTIAL EFFECT



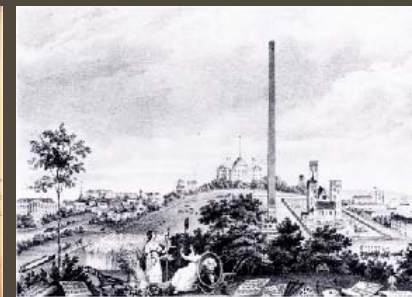
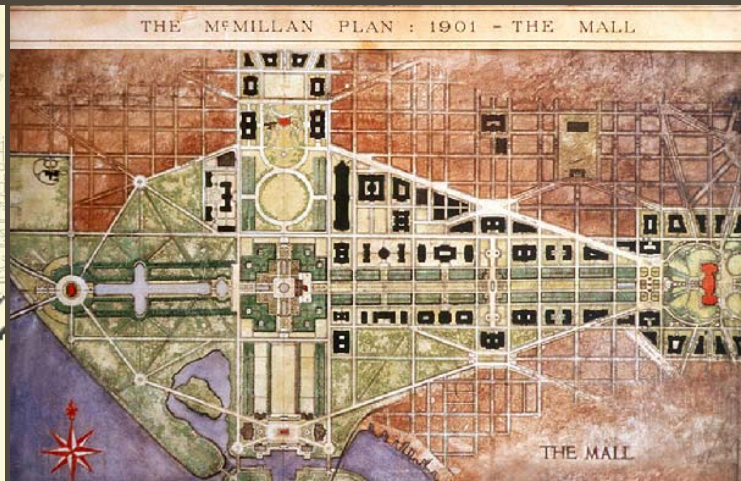


# Design Opportunities

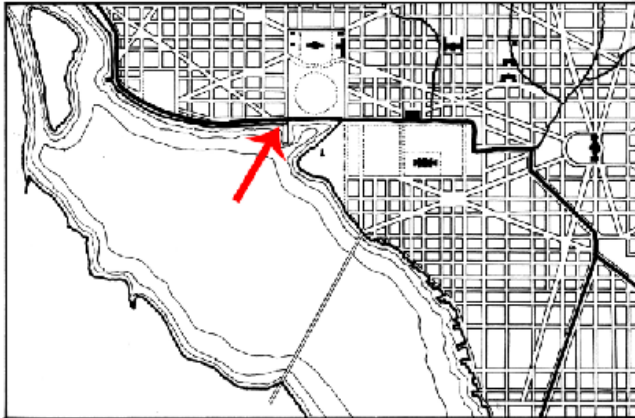




# Design Opportunities



# Design Opportunities



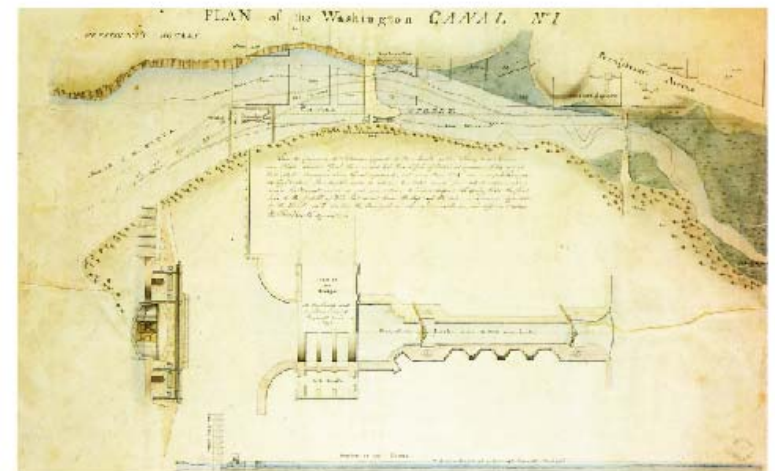
CITY OF WASHINGTON

1855



CITY OF WASHINGTON

1994



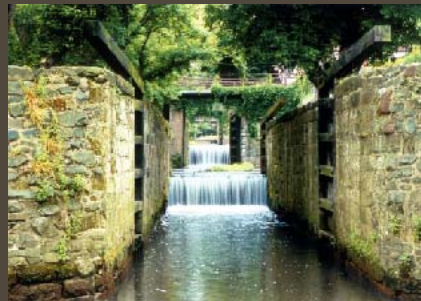
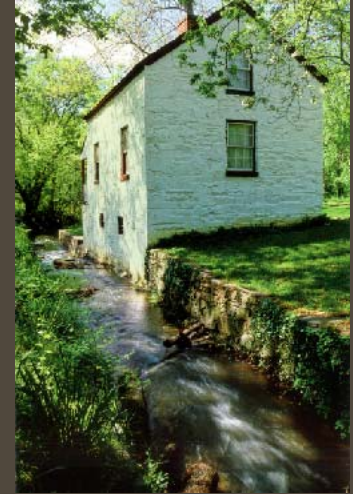


# Design Opportunities



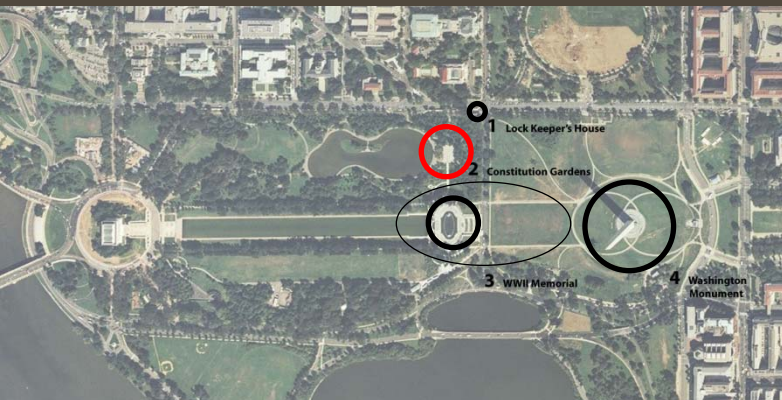


# Design Opportunities



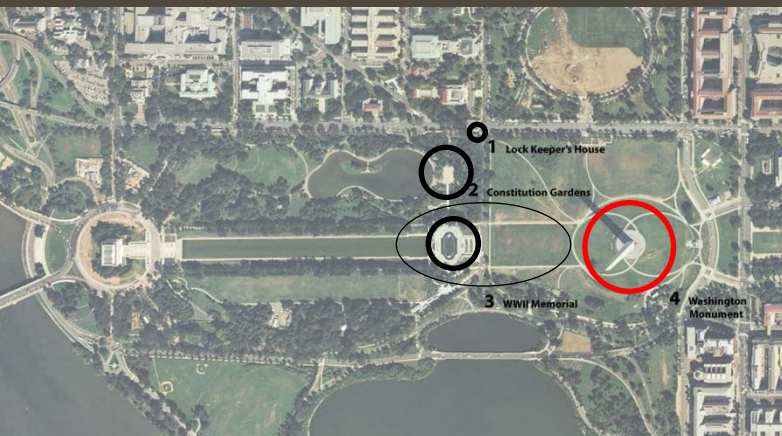
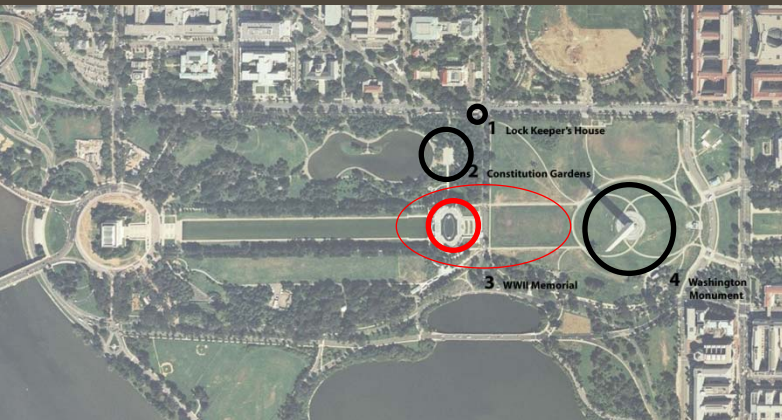


# Design Opportunities





# Design Opportunities





# Design Opportunities

EXISTING SITE PHOTOS



# Comment

## Written

Glenn DeMarr  
Project Manager  
Office of Lands, Resources and Planning  
National Capital Region  
National Park Service  
1100 Ohio Drive, SW  
Washington, DC 20242

## Electronic

[comments@potomaclevee.com](mailto:comments@potomaclevee.com)

or go to:

<http://parkplanning.nps.gov/>

And search for National Mall and Memorial Parks,  
Environmental Assessment for Design  
Alternatives for the Potomac Park Levee System

In order for your comments to be considered as part of this phase of the project, all comments must be received by **June 20, 2008**.

There will be additional opportunities to provide comments on this project:

- Design concepts submitted to NCPC, CFA and SHPO in August can be viewed on the website
- Public comments can be made at the NCPC and CFA hearings in September
- There will be a public review of the Environmental Assessment in September



# Project Timeline

2008

JAN

MAR

JUNE

SEP

DEC

2009

MAR

JUNE

SEP

DEC



Environmental  
Assessment &  
Section 106



NCPC and  
CFA review

Final  
Design  
Plans



Construction

FEMA Final  
Determination  
Map







**Thank you for your participation in this process**



*US Army Corps of Engineers*



*National Capital Planning Commission*



*District of Columbia*