

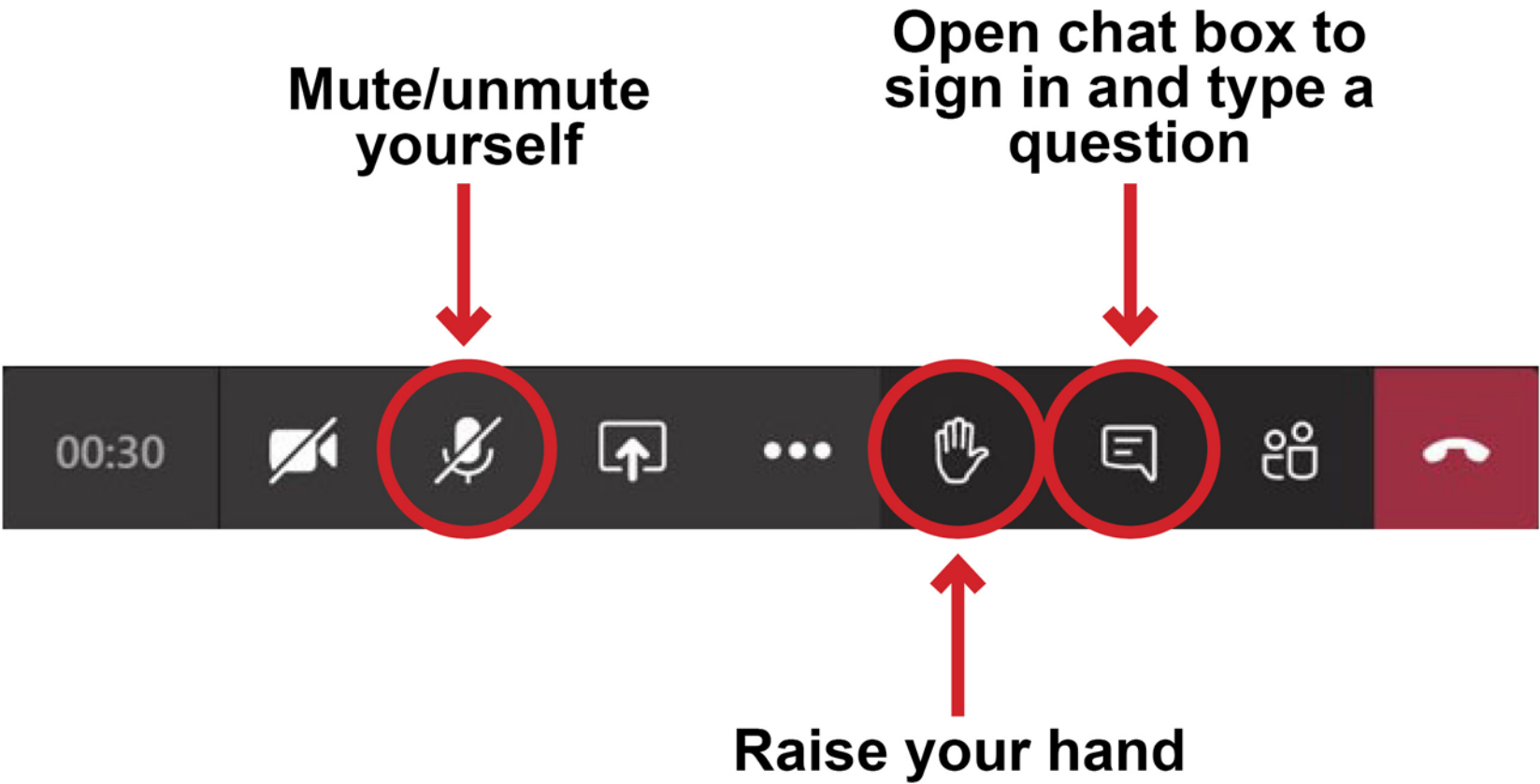


Wolf Trap National Park for the Performing Arts Proposed General Management Plan Amendment Environmental Assessment & Section 106

**Public Scoping Meeting
May 25, 2021**



Meeting Housekeeping



Agenda

Welcome + Meeting Purpose

Project Background + Park History

Existing Conditions

NEPA + Section 106 Process + Issues

Proposed General Management Plan Amendment

Comment Submissions

Questions



Welcome + Meeting Purpose



Meeting Purpose

- Conduct public scoping and initiate Section 106 meeting
- Describe the park's existing conditions
- Present the proposed General Management Plan (GMP) amendment
- Encourage public feedback on the proposed amendment and identify issues, concerns, and ideas



Project Background + Park History



Project Background

- The National Park Service (NPS) and its partner, the Wolf Trap Foundation for the Performing Arts (Foundation), propose to amend the 1997 General Management Plan (GMP) for Wolf Trap National Park for the Performing Arts.
- The proposed amendment will serve to build upon and adjust elements of the existing GMP to meet the current and future needs of the park.
- Established in 1966, the park is the first and only national park dedicated to the performing arts.
- The NPS is responsible for park operations and management, sponsors interpretive and educational programs, maintains technical equipment and backstage facilities that serve performing artists, and shares in managing the visitor experience.
- The Foundation, a private, not-for-profit organization, is responsible for the artistic programming, educational concerts, public relations, marketing, theatrical production, and shares in managing the visitor experience.
- Both organizations provide services to visitors that allow for safe and enjoyable experiences at the park.



Photo Credit: NPS/USPP

Park History

- The park land was first developed as a 200-acre farm during the mid- to late-1800s.
- In 1930, Catherine Filene Shouse, an accomplished social and political activist, author, and public servant, purchased property and named it Wolf Trap Farm after the Wolftrap Creek.
- From the 1930s until the early 1960s, Shouse's family used the property as a working farm. The property was also used as a rural retreat from Washington, DC, and as a place to hold informal parties, fundraising events, and host friends and families.
- In 1964, Shouse approached NPS and proposed to donate the land and construct an amphitheater if NPS would establish and operate its first national park for the performing arts. The donation was tentatively accepted.
- On October 15, 1966, Public Law 89-671 (80 Stat. 950) authorized the establishment of the park "...for the purpose of establishing in the National Capital area a park for the performing arts and related educational programs and recreation use in connection therewith..."
- The Filene Center opened in 1971, was destroyed by a fire in 1982, and was rebuilt and opened in 1984.
- On August 21, 2002, Public Law 107-219 officially changed the park's name from Wolf Trap Farm Park to Wolf Trap National Park for the Performing Arts.

Park Purpose and Significance

- **The purpose of the park is to provide opportunities to experience live performances, related educational programs, and associated recreation in a pastoral setting within the National Capital area.**
- The following significance statements have been identified for park. (Please note that the statements are in no particular order.)
 - **First and only national park for the performing arts.** Wolf Trap National Park for the Performing Arts is the first and only national park for the performing arts.
 - **Home of the Filene Center.** Wolf Trap National Park for the Performing Arts is home to the Filene Center, a premier outdoor performing arts venue that has developed technical and operational capabilities which supports a high variety, density, and caliber of programming.
 - **Collaborative partnership authorized by Congress.** The collaborative partnership between the Wolf Trap National Park for the Performing Arts and the Wolf Trap Foundation was authorized by Congress to aid the park in presentation of performing arts and related educational and cultural programming.
 - **Bringing the performing arts to the public.** Wolf Trap National Park for the Performing Arts was the realization of the vision of Catherine Filene Shouse to bring a diversity of performing arts to the public in the National Capital area. Her donation of the land that became the park allowed the vision to become reality.
 - **Cultural arts in an outdoor setting.** Wolf Trap National Park for the Performing Arts conserves a former agricultural site that allows visitors to experience cultural arts and compatible recreation in an outdoor setting.

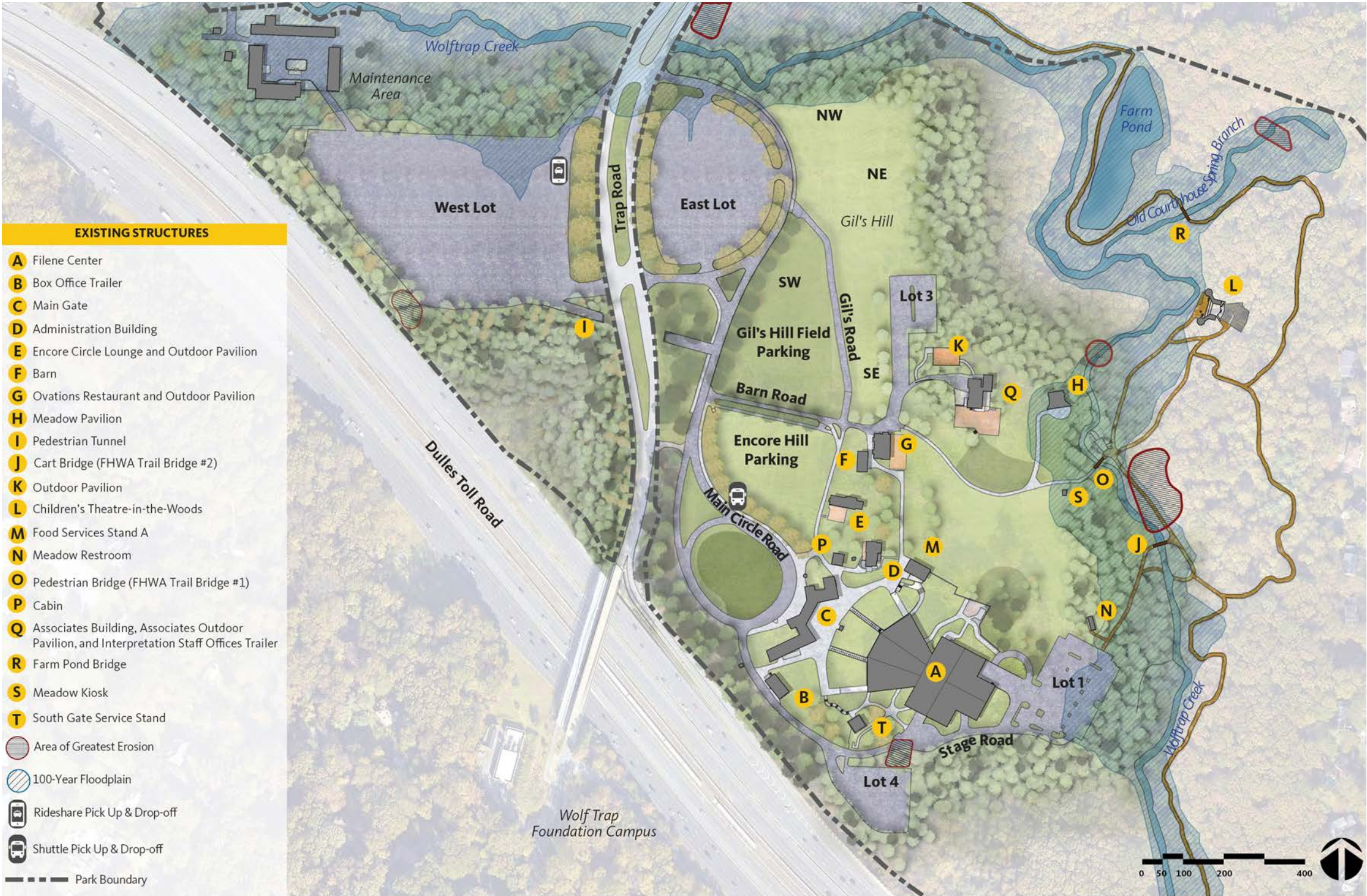


Existing Conditions



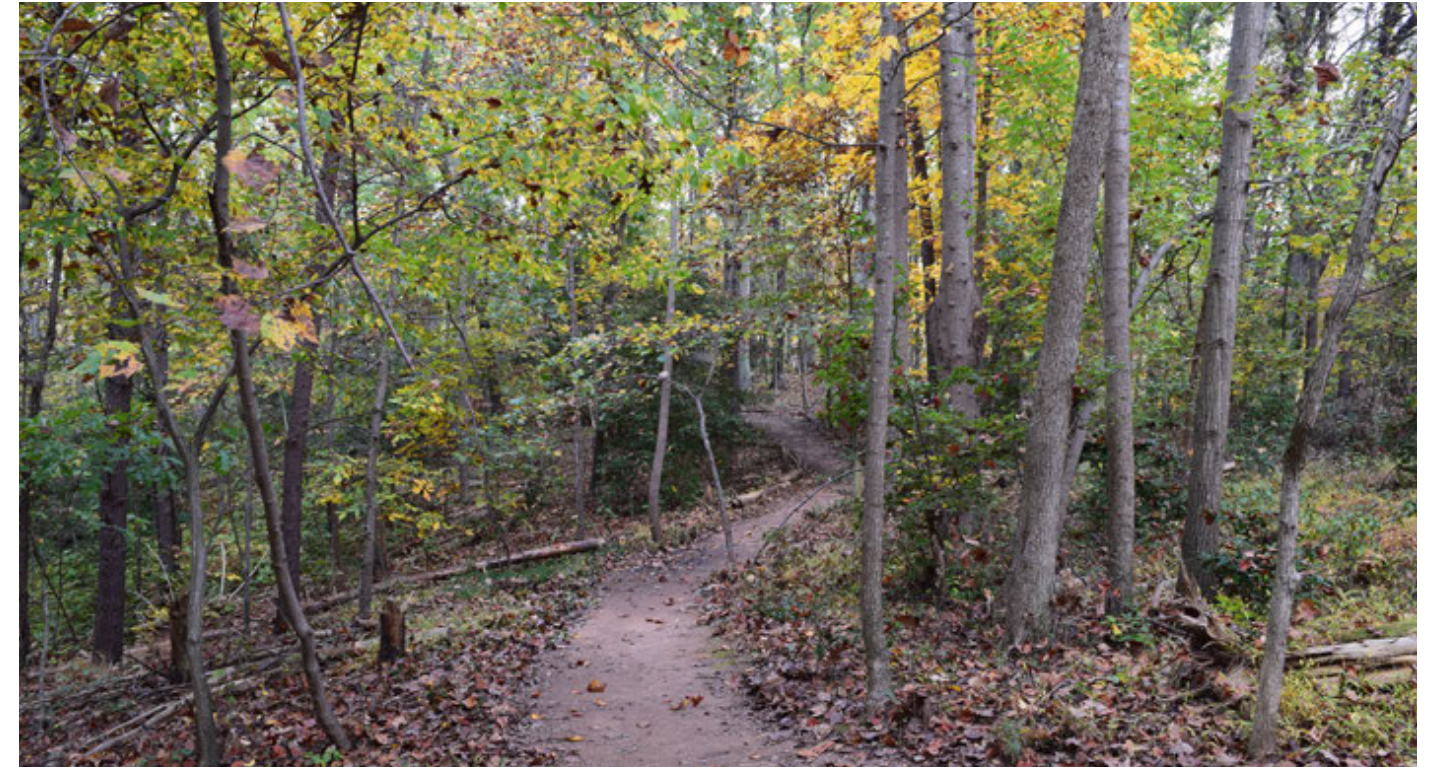
Existing Conditions

- The approximately 130-acre park is located on former farmland and contains three outdoor performance venues, the Filene Center, the Children’s Theatre-in-the-Woods, and the Meadow Pavilion, as well as several other structures, paved and turf parking areas, paved roads, managed turf areas, meadows, hiking trails, and woodlands.



Existing Conditions

- Less than half of the park land is developed, leaving approximately 65 acres of natural woodland, streams, and wetland and a wide variety of plants, animals, birds, and wildflowers.
- The park's natural areas add green space to a dense suburb, provide refuge for many species, provide a migration rest area for wildlife, and serve as a living biology classroom to the community.
- The park includes two overlapping trails, a 1.5-mile loop trail and a 2.5-mile loop trail, that offer opportunities to hike and observe nature.



Trail through woodlands (Photo Credit: Quinn Evans Architects)



Birdhouse along the east side of Gil's Hill (Photo Credit: Quinn Evans Architects)

Existing Conditions - Visitation

- The park received an average of 407,500 visitors annually between 2015 and 2019
- The performance season runs late May to mid-September
- The majority of performances are held in the summer making June-August the peak visitation months, although a visitation spike occurs in December due to a holiday concert
- Although performances are seasonal, the park is open to visitors year-round with full access to trails and natural areas



Filene Center



Trail volunteers leading a group of visitors on a guided hike on the Wolf Trap Trail

Existing Conditions - Facilities and Performance Space

- The park contains multiple performance spaces. The Filene Center (approx. 7,000 capacity) currently offers approximately 75 performances annually
- The Meadow Pavilion is used during the summer for workshops and intermittently in the fall and spring for education programs
- The Children's Theatre-in-the-Woods (approx. 700 capacity) is used during the summer for children's theater performances and intermittently in the fall and spring for education programs
- Other facilities within the park support visitor service operations and administration. The structures along the northern approach from the Gil's Hill parking area to the Filene Center offer food and dining services to visitors and patrons only during performances and house administrative functions of the park.
- Additional facilities throughout the park include restrooms, box offices, and concessions.



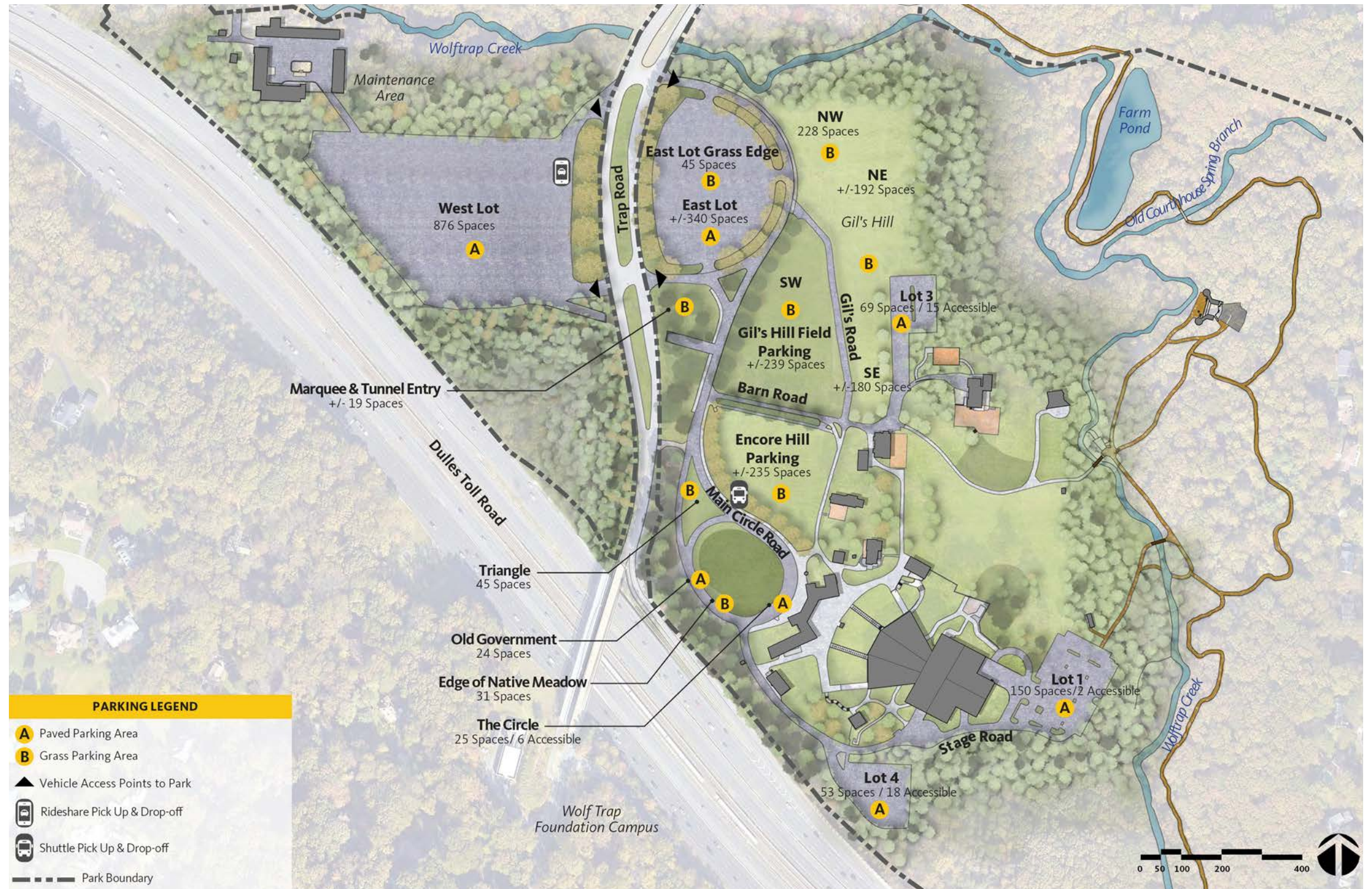
Meadow Pavilion (Photo Credit: Quinn Evans Architects)



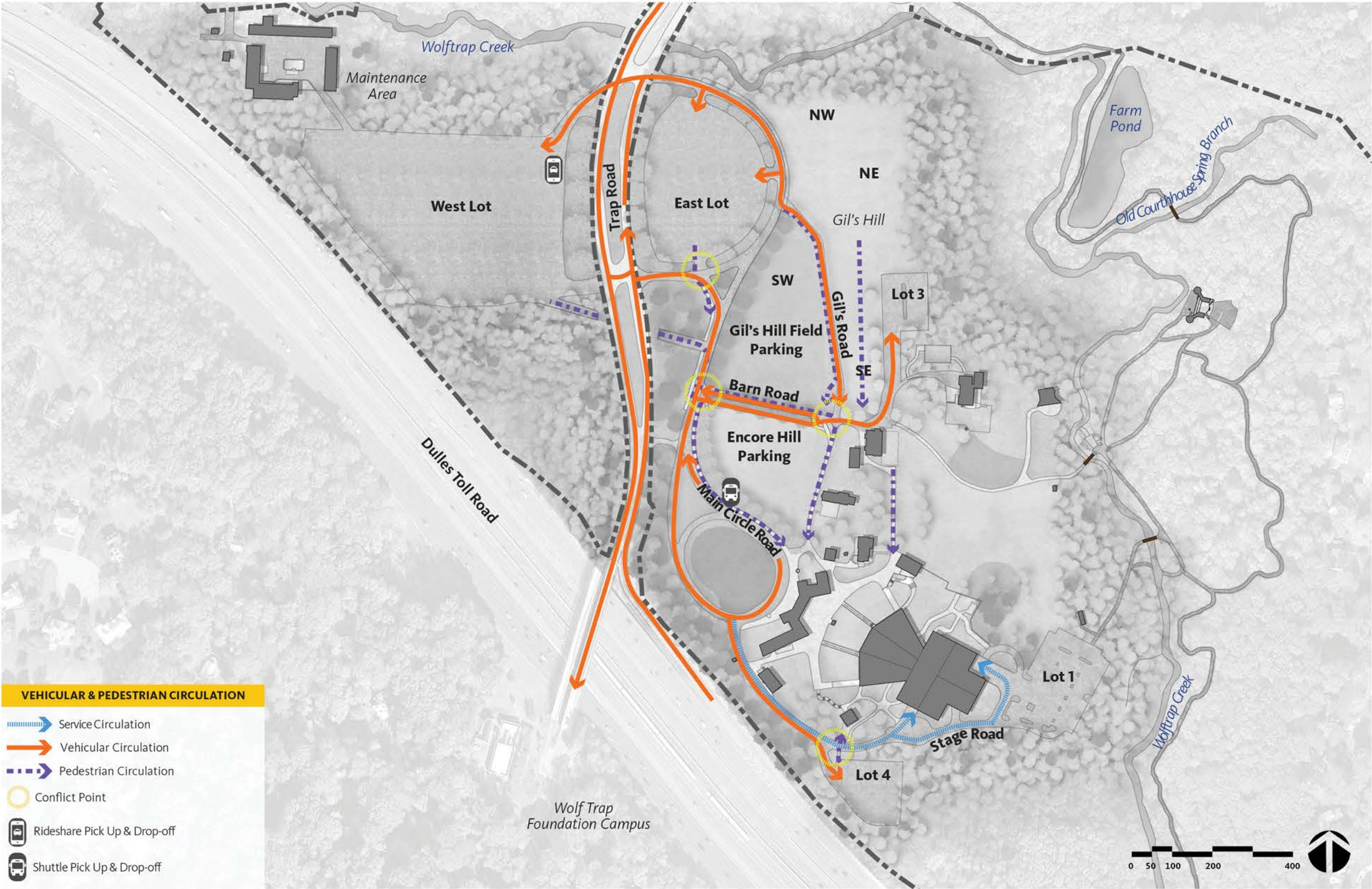
Children's Theatre-in-the-Woods

Existing Conditions - Parking and Transportation

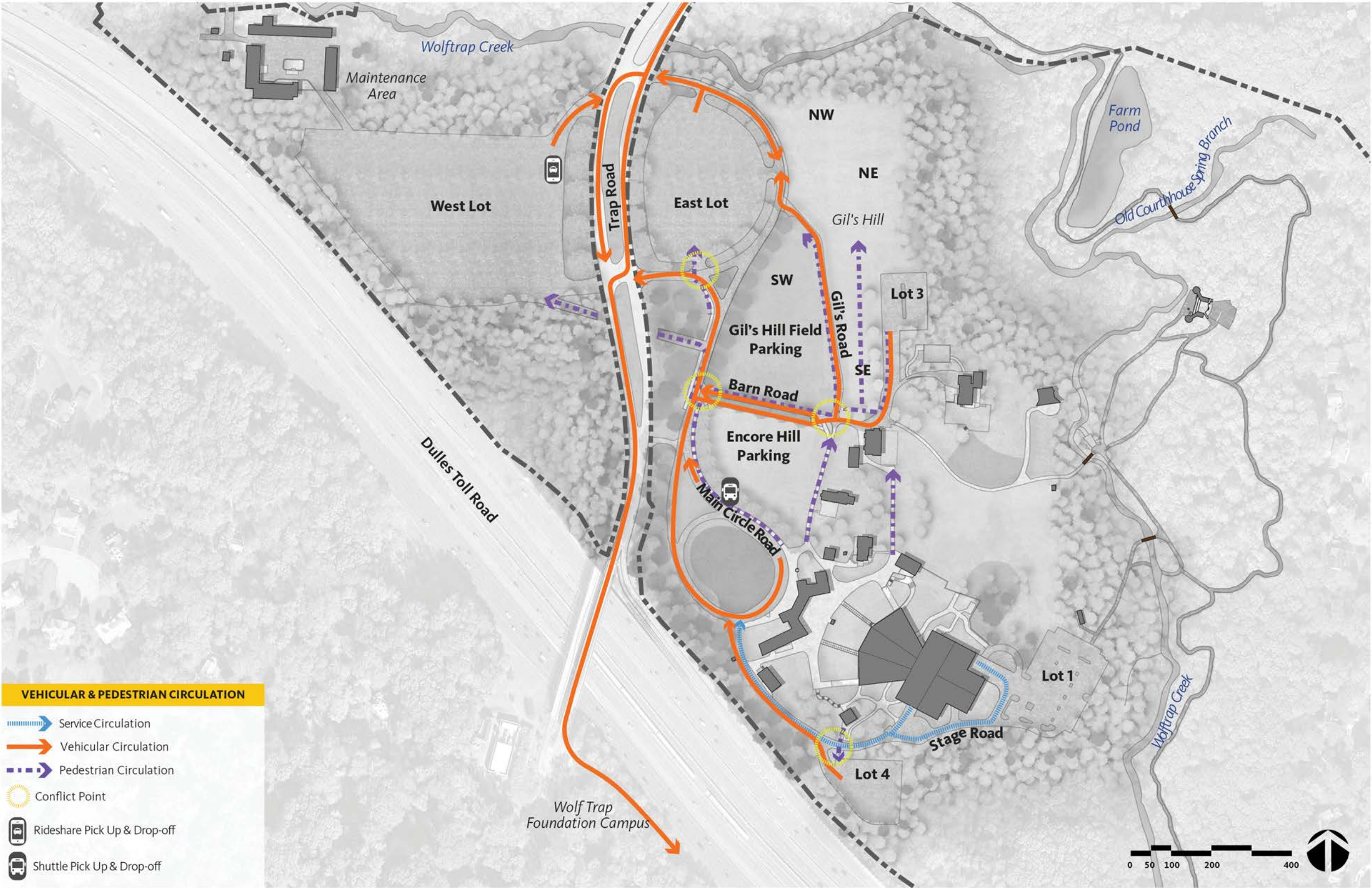
- Visitor and patron parking at the park is available in 16 paved and designated grass lots
- Parking capacity is approximately 2,700-2,800 parking spaces, including 41 accessible spaces at the Circle and Lots 1, 3, and 4
- A shuttle providing a connection to the West Falls Church Metro Station connects along Main Circle Road
- Drop off/pickup areas for ride sharing services currently operate in a pull off area on the west side of Trap Road



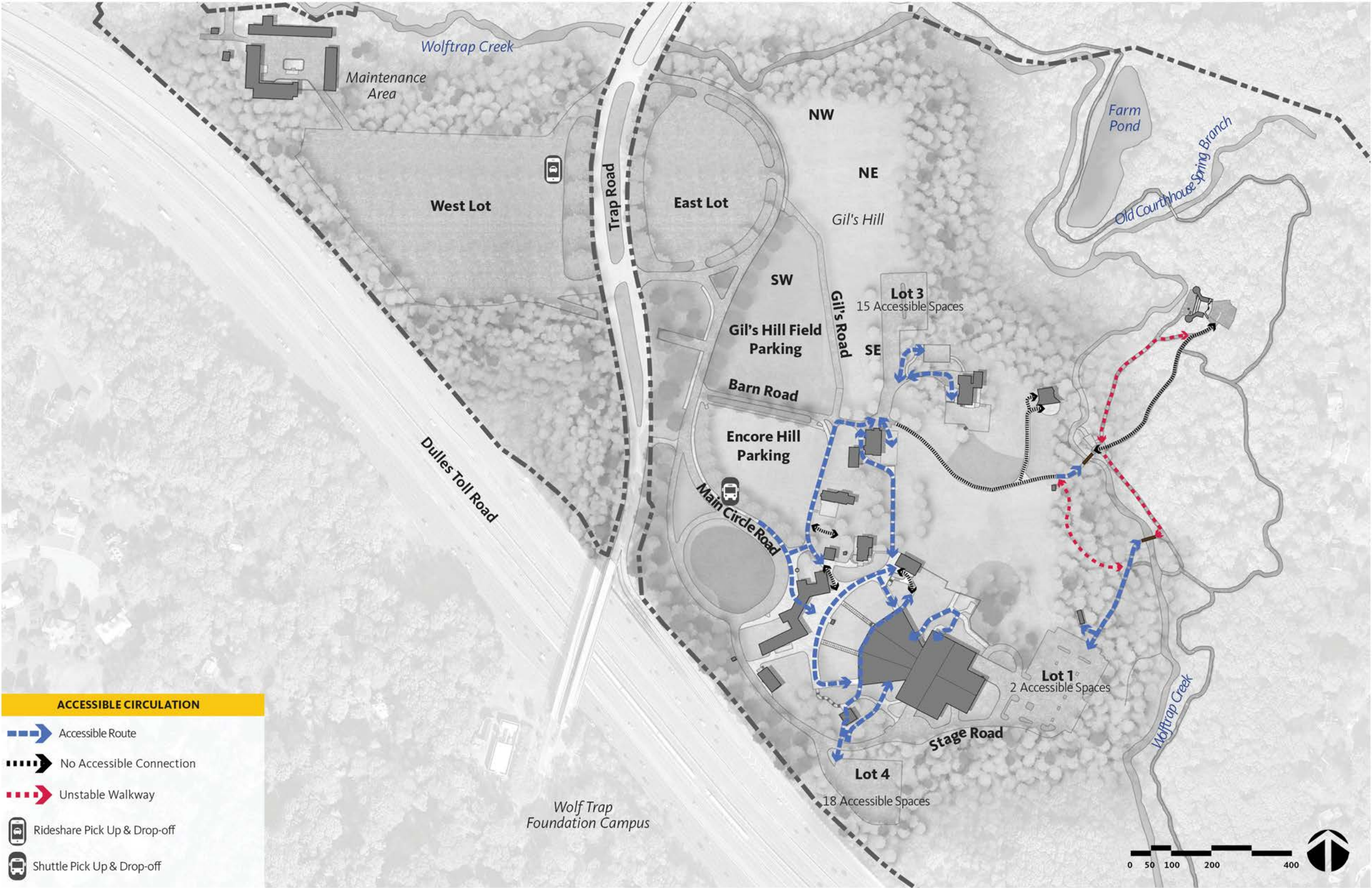
Existing Conditions - Arrival Circulation



Existing Conditions - Departure Circulation



Existing Conditions - Accessible Circulation



Existing Conditions - Filene Center Main Gate



Patrons and visitors arriving at the Filene Center main gate



Patrons and visitors arriving at the Filene Center main gate



Patrons and visitors waiting outside the Filene Center main gate



Bioretention area in front of the Filene Center main gate

Existing Conditions - Food Services Stand A



View of the south side of Food Services Stand A from the Filene Center

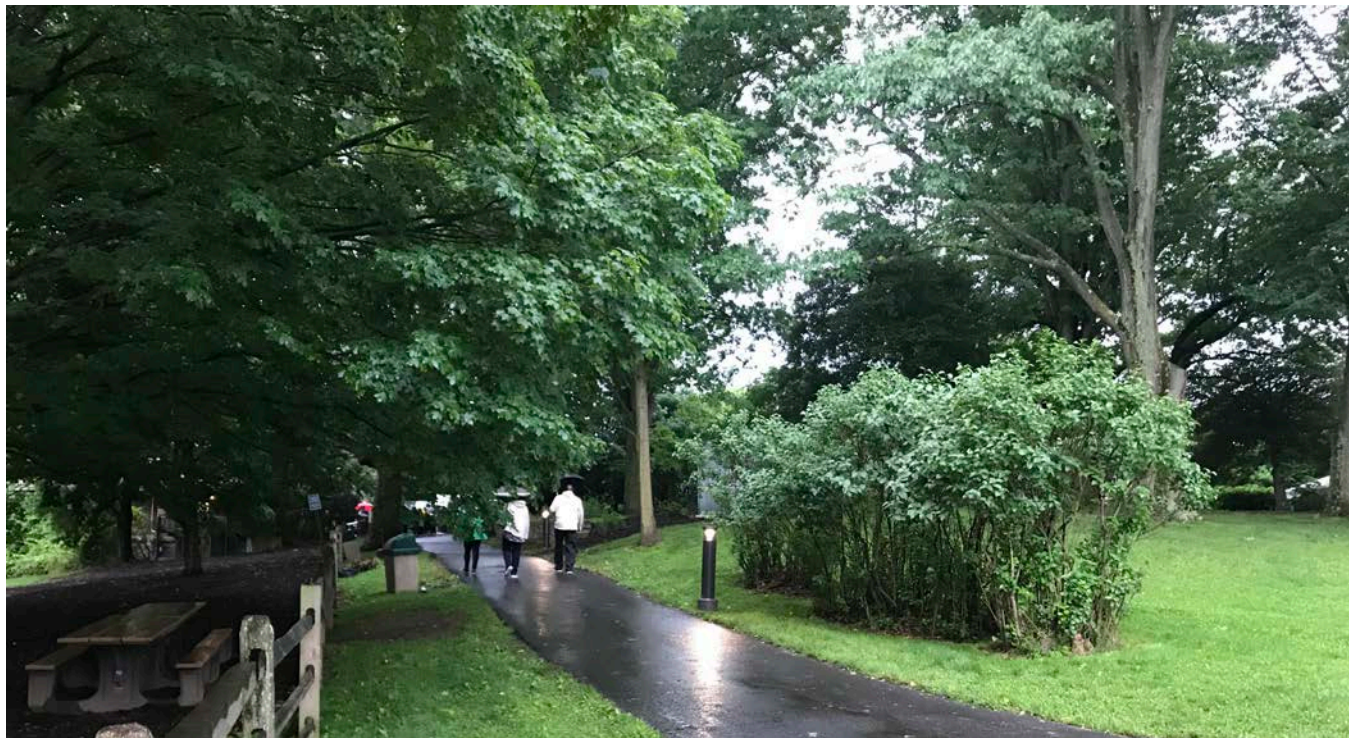


View of the west and south sides of Food Services Stand A



View of the north side of Food Services Stand A from the east meadow

Existing Conditions - Other



View looking south of the pathway and picnic area along the west edge of the east meadow



View looking south of picnic area and the Encore Circle Lounge



View of the east meadow and Meadow Kiosk



Cabin (Photo Credit: Quinn Evans Architects)



NEPA + Section 106 Process + Issues



GMP Amendment Purpose

The purpose of the proposed action is to update the Wolf Trap National Park for the Performing Arts GMP to achieve the following in a manner that ***protects park resources and retains the park's cultural landscape, outdoor recreation opportunities, and performing arts experiences*** in an outdoor setting:

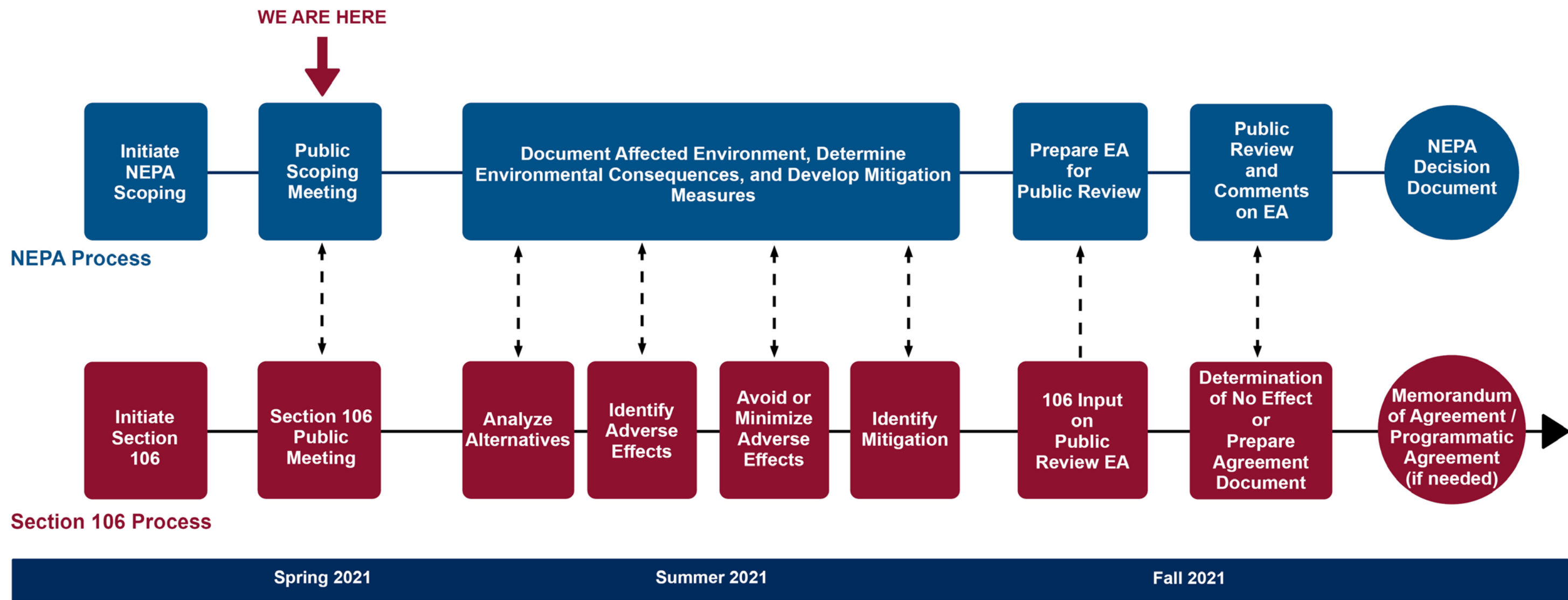
- **Create and improve amenities** expected by visitors, patrons, and artists
- **Improve accessibility, safety, and security features** to current industry standards wherever possible
- **Address long-documented site challenges**, such as transportation access, pedestrian circulation, and stormwater management
- **Address deferred maintenance areas**
- **Improve the visitor and patron experience and expand opportunities** for year-round park use

GMP Amendment Need

An amendment to the Wolf Trap National Park for the Performing Arts GMP is needed to address the following issues:

- The Filene Center has outdated amenities that do not meet current industry standards and/or expectations
- Facilities do not meet accessibility standards
- Facility configuration does not support current security/operational needs
- The visitor experience is impacted by the lack of shelter during inclement weather
- Children's Theatre-in-the-Woods area lacks needed support facilities, such as a comfort station, shelter, and an appropriate kiosk
- Amenities for visitors and patrons are limited
- Patron and visitor queues for arrival and security leave them exposed to the elements

NEPA + Section 106: A Coordinated Approach



National Environmental Policy Act (NEPA) of 1969

- Established a national policy for **protecting the environment** and requires evaluation of alternative actions
- Goal is to ensure **informed decision-making**
- Can conclude with an Environmental Assessment (EA) and Finding of No Significant Impact (FONSI) or an Environmental Impact Statement (EIS) and Record of Decision (ROD)

Section 106 of the National Historic Preservation Act of 1966

- Established a process to **protect resources** listed in, or eligible for listing in, the National Register of Historic Places, and requires the consideration of alternatives if effects on historic resources are anticipated
- Goal is to **minimize potential harm** and damage to historic properties
- Can conclude in a Determination of No Adverse Effect or a Memorandum of Agreement with Consulting Parties

What Issues will the EA Address?

- The proposed project could alter vehicle and pedestrian circulation patterns
- The proposed project could add accessible parking near the Filene Center and improve overall accessibility
- The proposed project could add new amenities and structures or renovate existing facilities
- The proposed project could alter stormwater runoff
- The proposed project could introduce or change elements of documented historic resources, cultural landscapes, and archeological resources



West approach to the pedestrian tunnel under Trap Road (Photo Credit: Quinn Evans Architects)



Associates Building and Interpretation Staff Offices Trailer (Photo Credit: Quinn Evans Architects)

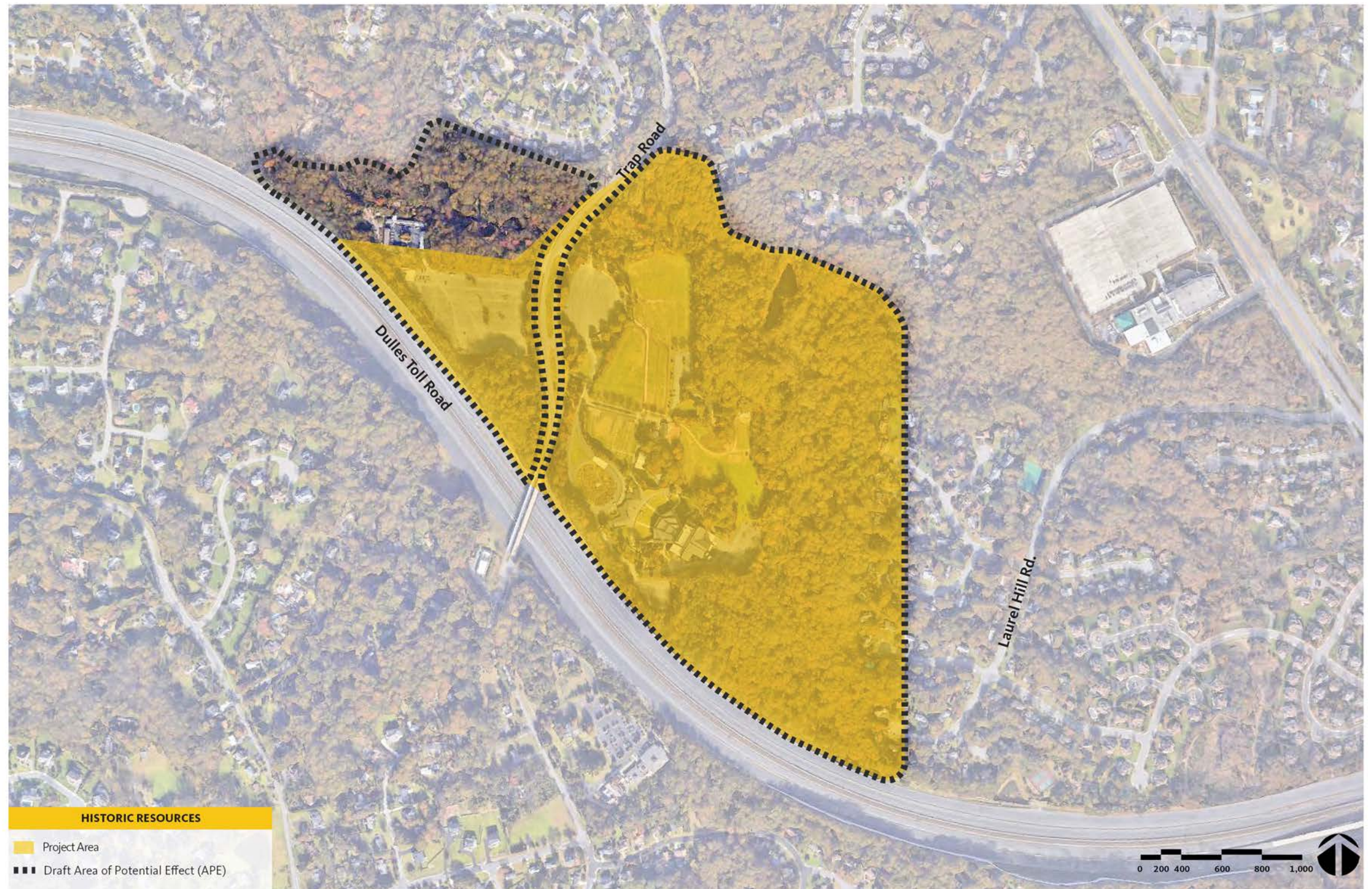
Section 106 Participants

- Virginia State Historic Preservation Office
- Advisory Council on Historic Preservation
- National Capital Planning Commission
- Preservation Organizations and Other Interested Parties
- General Public



Section 106 Historic Resources

- The park is eligible for the National Register of Historic Places as a historic district. A National Register Nomination is in-progress.
- The park is in the process of preparing a Cultural Landscape Report which presents a history and context of the cultural landscape in a National Park.
- Contributing features include:
 - Vegetation
 - Spatial organization
 - Views
 - Buildings and structures
 - Circulation
 - Natural systems and topography
 - Land use
 - Small-scale features
 - Archeological sites



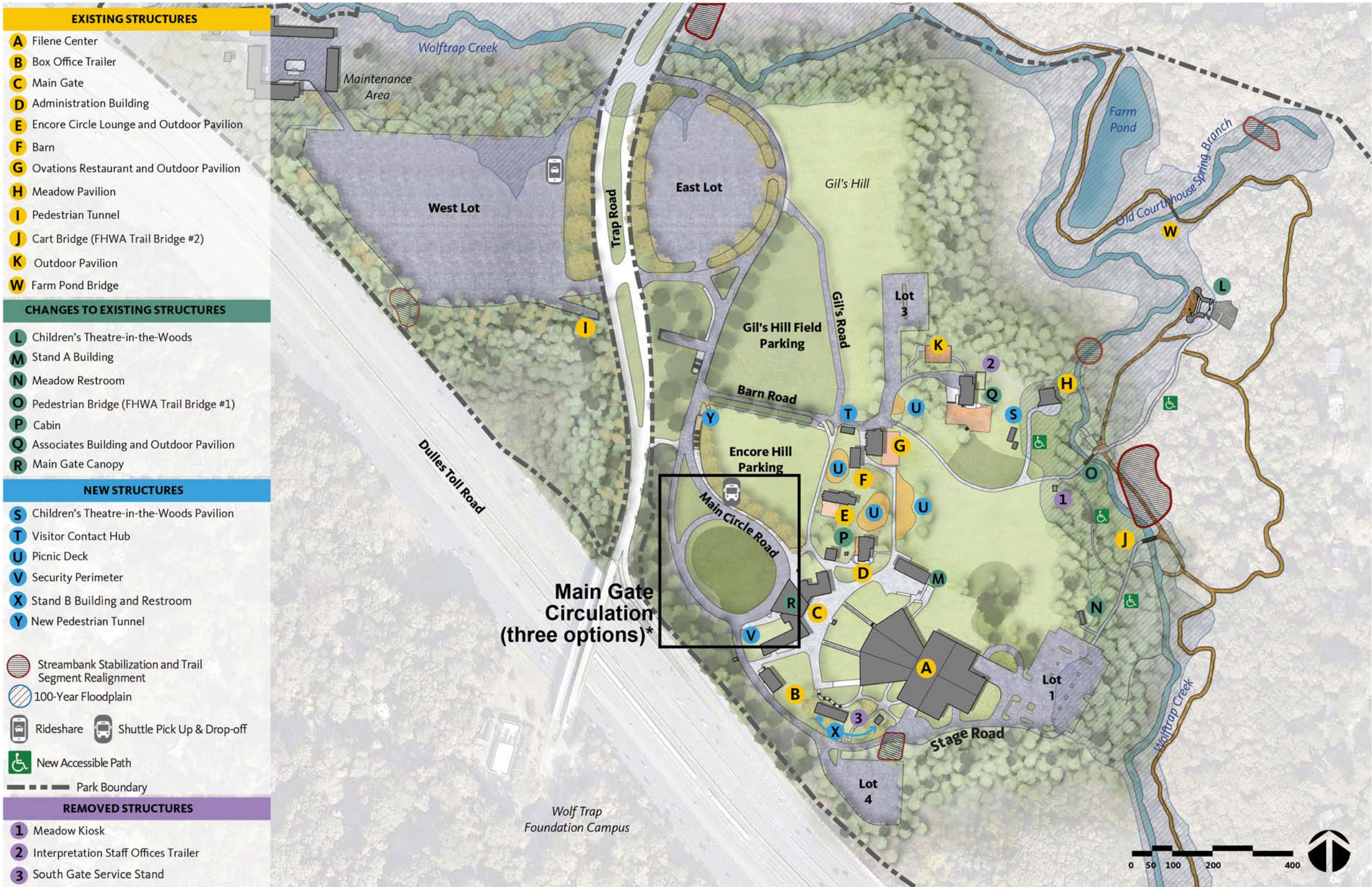


Proposed General Management Plan (GMP) Amendment



Proposed GMP Amendment - Overview

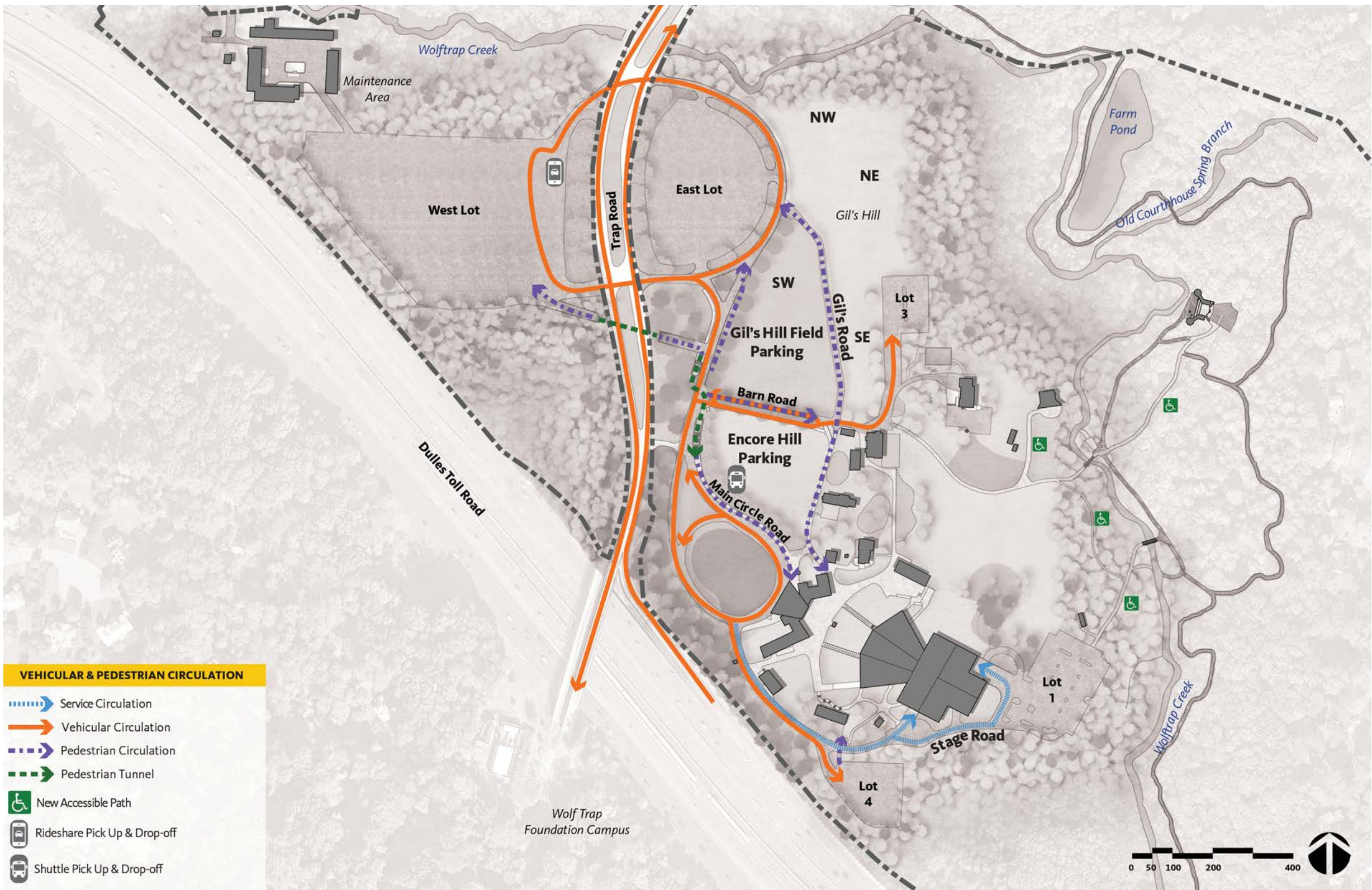
- Creates amenities expected by patrons, visitors, and artists and addresses deferred maintenance through renovations and/or replacement of existing structures
- Improves accessibility throughout the park
- Adds security features and addresses security/operational needs at Main Gate area
- Improves the visitor and patron experience through addition of walkway and queue line treatment and expands opportunities for year-round park use
- Addresses patron and visitor experience regarding inclement weather
- Supports Children's Theatre-in-the-Woods programming
- Adds directional and wayfinding signage



*Note: The three Main Gate Circulation options are not illustrated on the above map. These options are presented on pages 34-38.

Proposed GMP Amendment - Circulation

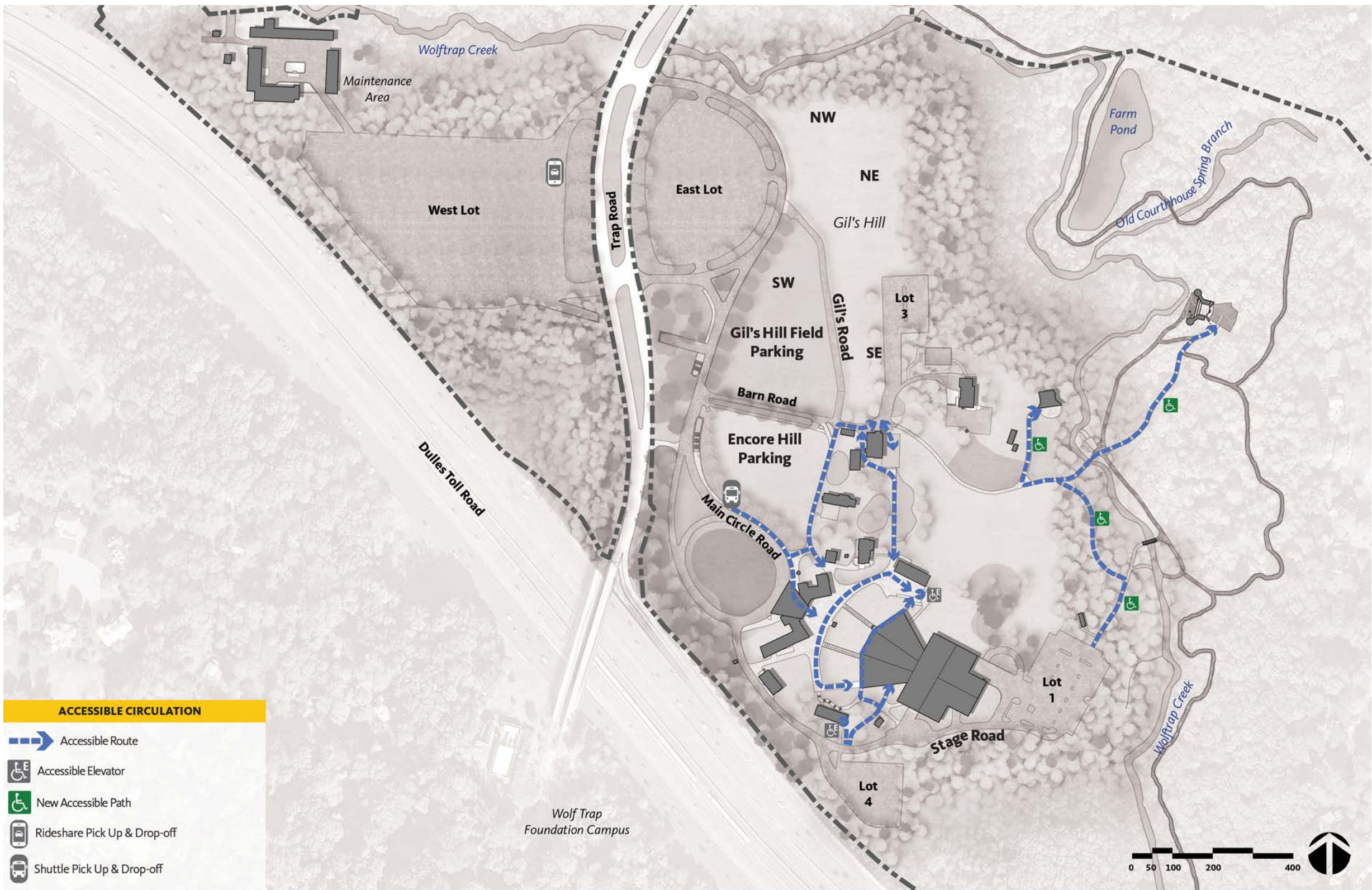
- Improves accessibility and safety through revised circulation patterns, walkways, and new parking
- Widens pathways along the north-south entry corridor between Gil's Hill and the Filene Center to better accommodate visitors and patrons
- Addresses transportation access and pedestrian circulation through revised circulation patterns, new parking, and a new pedestrian tunnel



*Note: The three Main Gate Circulation options are not illustrated on the above map. These options are presented on pages 34-38.

Proposed GMP Amendment - Accessible Circulation

- Improves accessibility through revised circulation patterns and new parking
- Accessibility improvements will be phased to address both site and Filene Center circulation

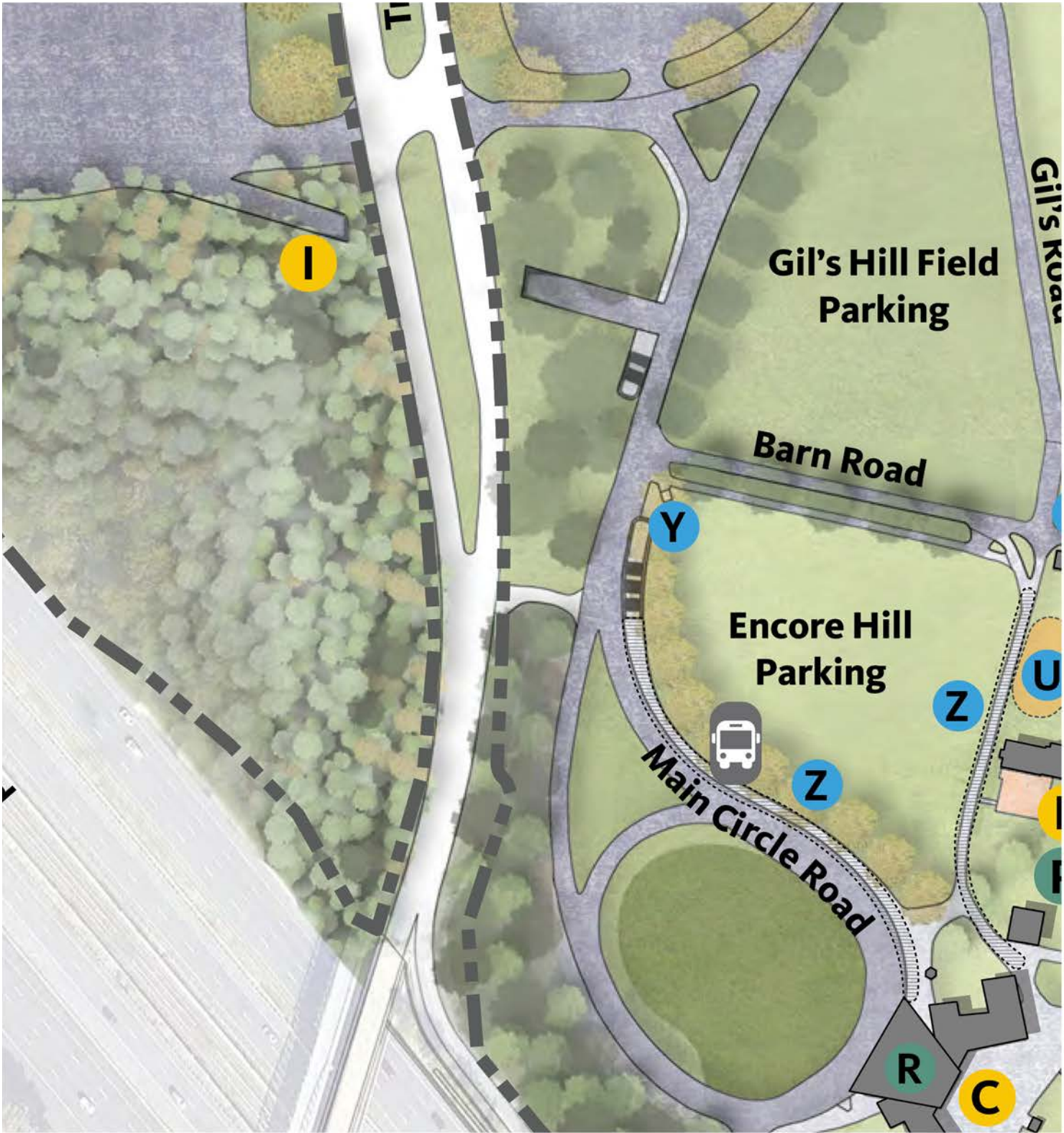


*Note: The three Main Gate Circulation options are not illustrated on the above map. These options are presented on pages 34-38.

Proposed GMP Amendment

Main Gate Approach - Tunnel and Walkway Option

- Provides a treatment for walkway and queuing areas for Filene Center performances along Main Circle Road and the primary north-south access from Gil's Hill to help protect patrons and visitors from the elements
- Adds a new pedestrian tunnel under Main Circle Road and Barn Road to replace an at-grade pedestrian crossing of Main Circle Road



EXISTING STRUCTURES	
C	Main Gate
I	Pedestrian Tunnel
CHANGES TO EXISTING STRUCTURES	
R	Main Gate Canopy
NEW STRUCTURES	
U	Picnic Deck
Y	New Pedestrian Tunnel
Z	Walkway and Queue Line Treatment
	Shuttle Pick Up & Drop-off



VEHICULAR & PEDESTRIAN CIRCULATION	
	Vehicular Circulation
	Pedestrian Circulation
	Pedestrian Tunnel

*Note: The three Main Gate Circulation options are not illustrated on this page's maps. These options are presented on pages 34-38.

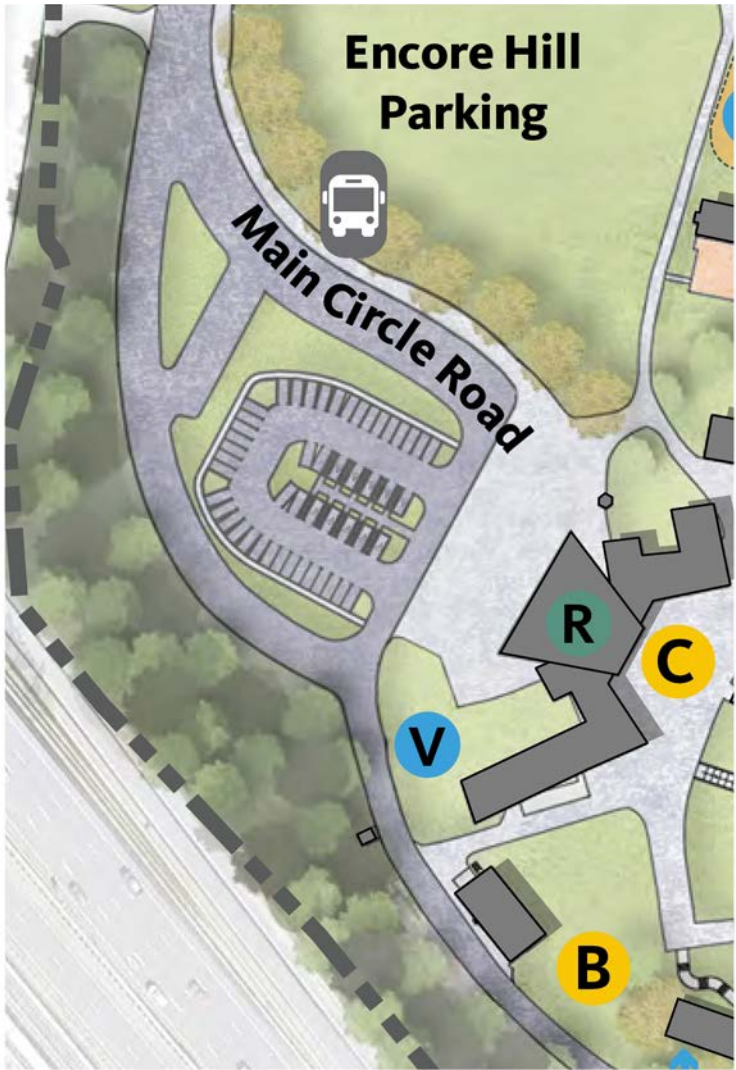
Proposed GMP Amendment

Main Gate Circulation Options

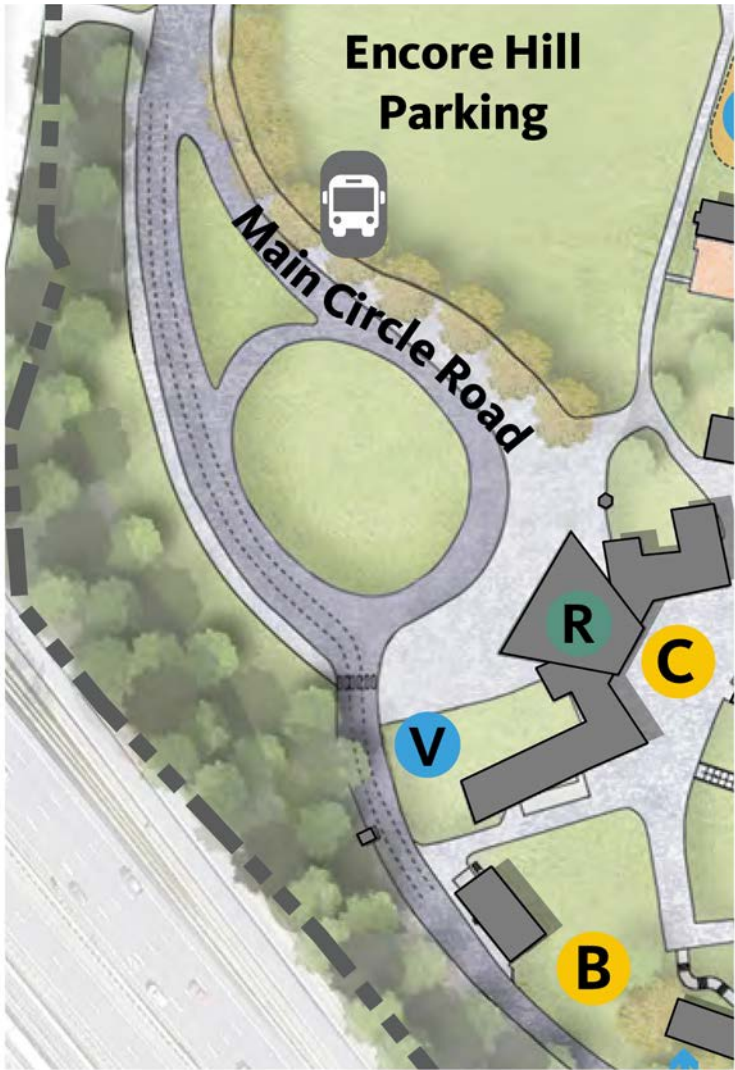
All Main Gate Circulation options:

- Widen Main Circle Road to add a bypass lane for vehicles needing to access Lot 4, Lot 1, or the backside of the Filene Center
- Remove existing parking around Main Circle Road
- Reconfigure Main Circle Road to accommodate the expanded Main Gate, the additional traffic lane, and bus turning movements
- Retain the existing Metro shuttle loading zone along Main Circle Road
- Expand and enhance the Main Gate plaza to provide an expanded canopy and improvements for security and pedestrian flow

Option A: Center Parking

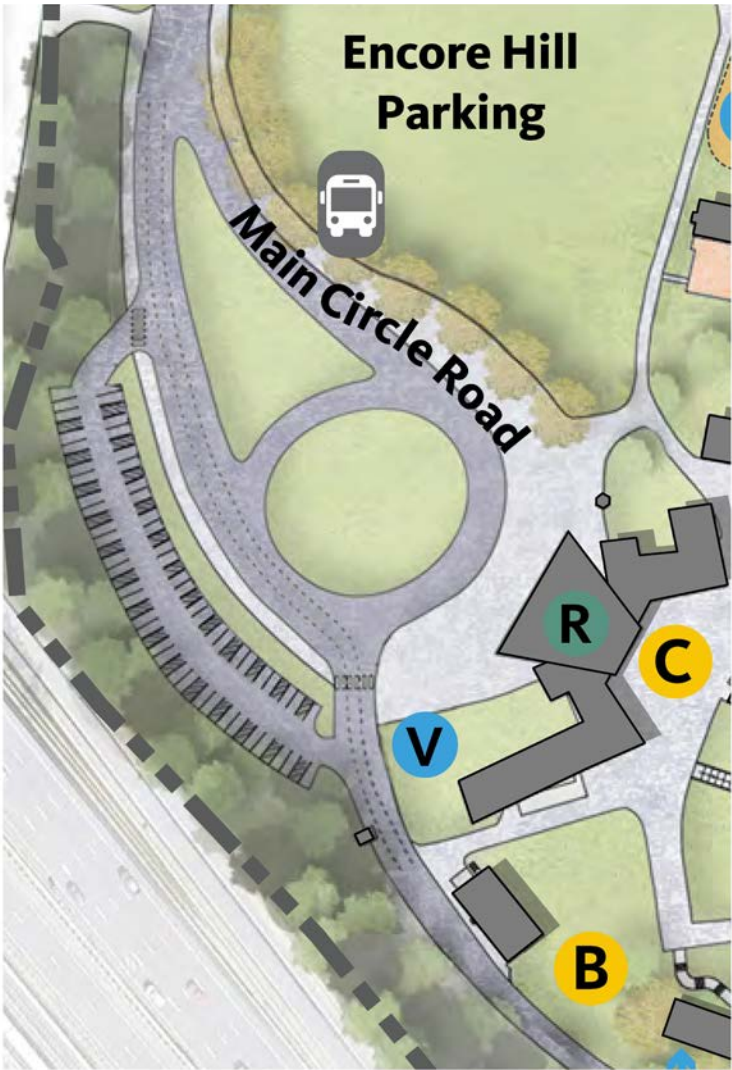


Option B: Removed Parking*



*May incorporate the addition of a parking structure at Lot 4

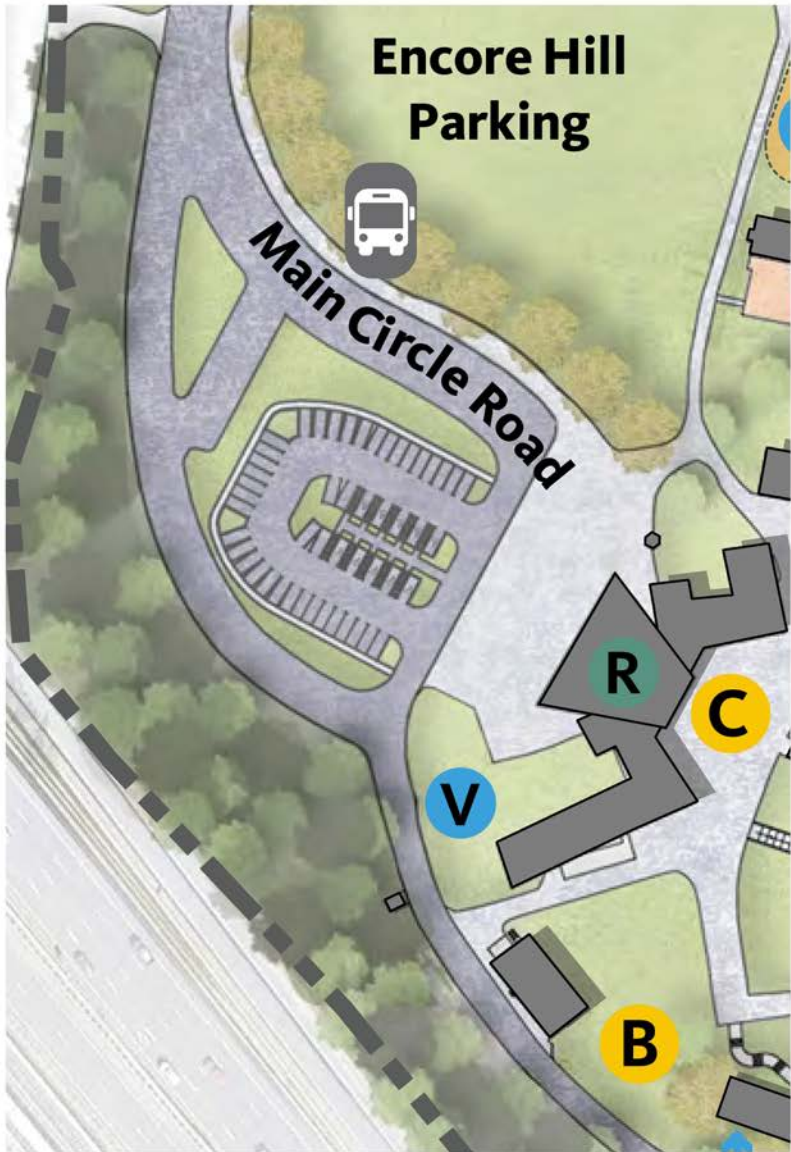
Option C: South Parking




Proposed GMP Amendment

Main Gate Circulation - Option A: Center Parking

- Removes, re-grades, and replaces the bioretention area enclosed by Main Circle Road near the Main Gate with a parking lot with approximately 40 potential accessible spaces
- Alters the view of the Filene Center approach
- Retains trees to the south of Main Circle Road

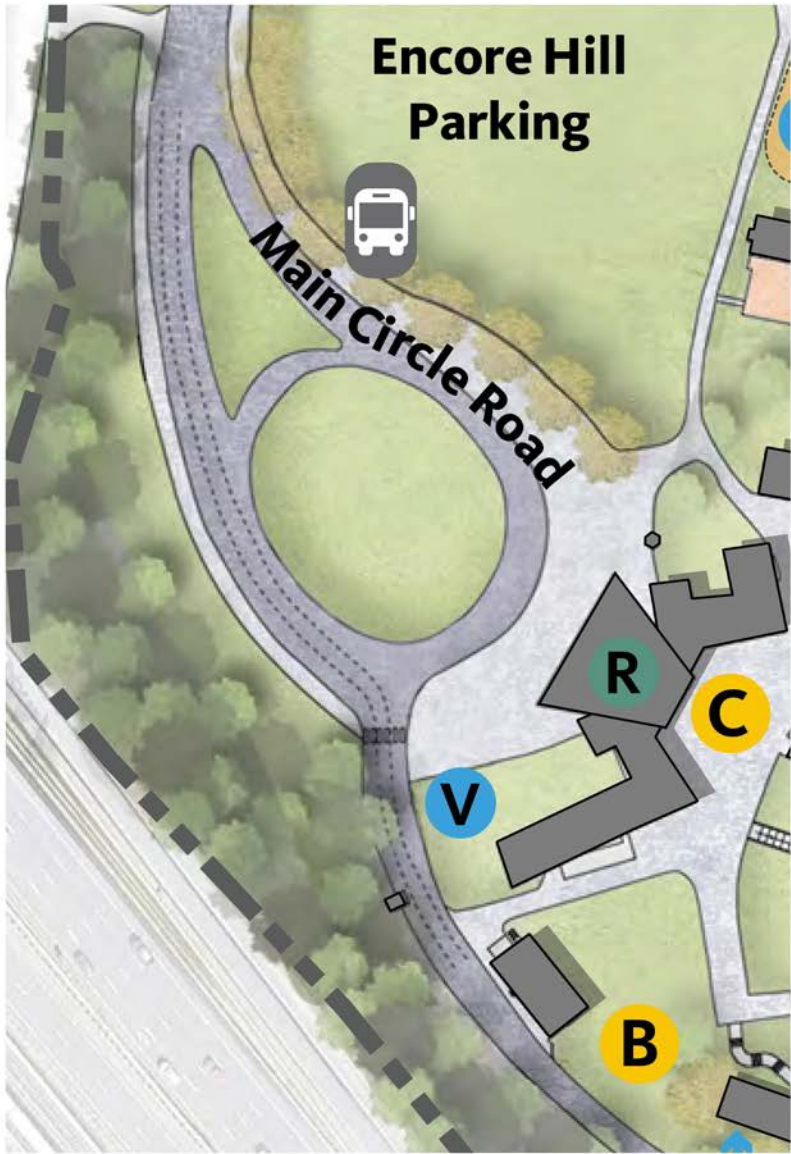


EXISTING STRUCTURES	
B	Box Office Trailer
C	Main Gate
CHANGES TO EXISTING STRUCTURES	
R	Main Gate Canopy
NEW STRUCTURES	
V	Security Perimeter
	Shuttle Pick Up & Drop-off

Proposed GMP Amendment

Main Gate Circulation - Option B: Removed Parking

- Slightly reduces the existing bioretention area within the center of Main Circle Road
- May incorporate the addition of a parking structure at Lot 4
- Adds a new sidewalk along the west and south sides of Main Circle Road to reduce the number of patrons and visitors crossing traffic at the intersection of Main Circle Road and Barn Road and to allow patrons and visitors to queue to both the north and south sides of the Main Gate
- Introduces one potential pedestrian and vehicle conflict point at Stage Road
- Maintains the view of the Filene Center approach
- Retains trees to the south of Main Circle Road



EXISTING STRUCTURES	
B	Box Office Trailer
C	Main Gate

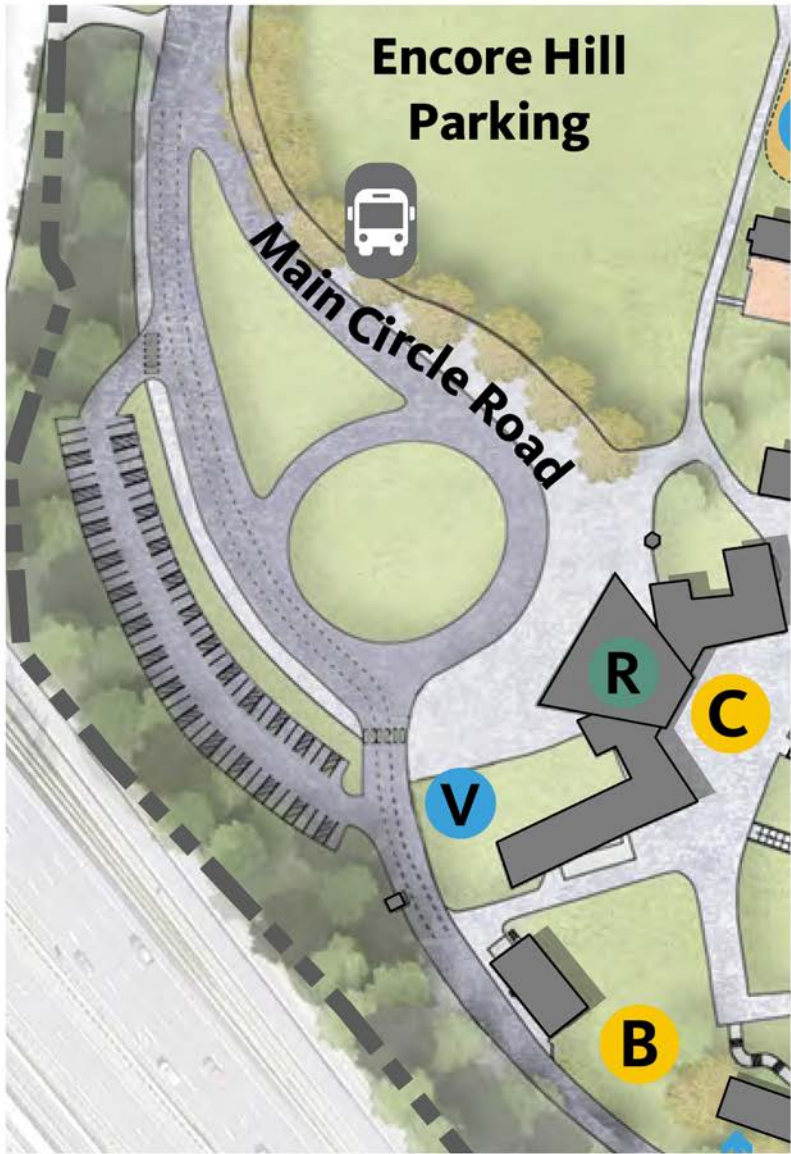
CHANGES TO EXISTING STRUCTURES	
R	Main Gate Canopy

NEW STRUCTURES	
V	Security Perimeter
	Shuttle Pick Up & Drop-off

Proposed GMP Amendment

Main Gate Circulation - Option C: South Parking

- Reduces the existing bioretention area within the center of Main Circle Road by approximately 50 percent
- Adds a new parking area with approximately 65 accessible spaces along the west side of Main Circle Road
- Adds a new sidewalk along the west and south sides of Main Circle Road to reduce the number of patrons and visitors crossing traffic at the intersection of Main Circle Road and Barn Road and to allow patrons and visitors to queue to both the north and south sides of the Main Gate
- Introduces two potential pedestrian and vehicle conflict points at new accessible parking area and Stage Road
- Maintains the view of the Filene Center approach
- Removes trees to the south of Main Circle Road to accommodate new parking area

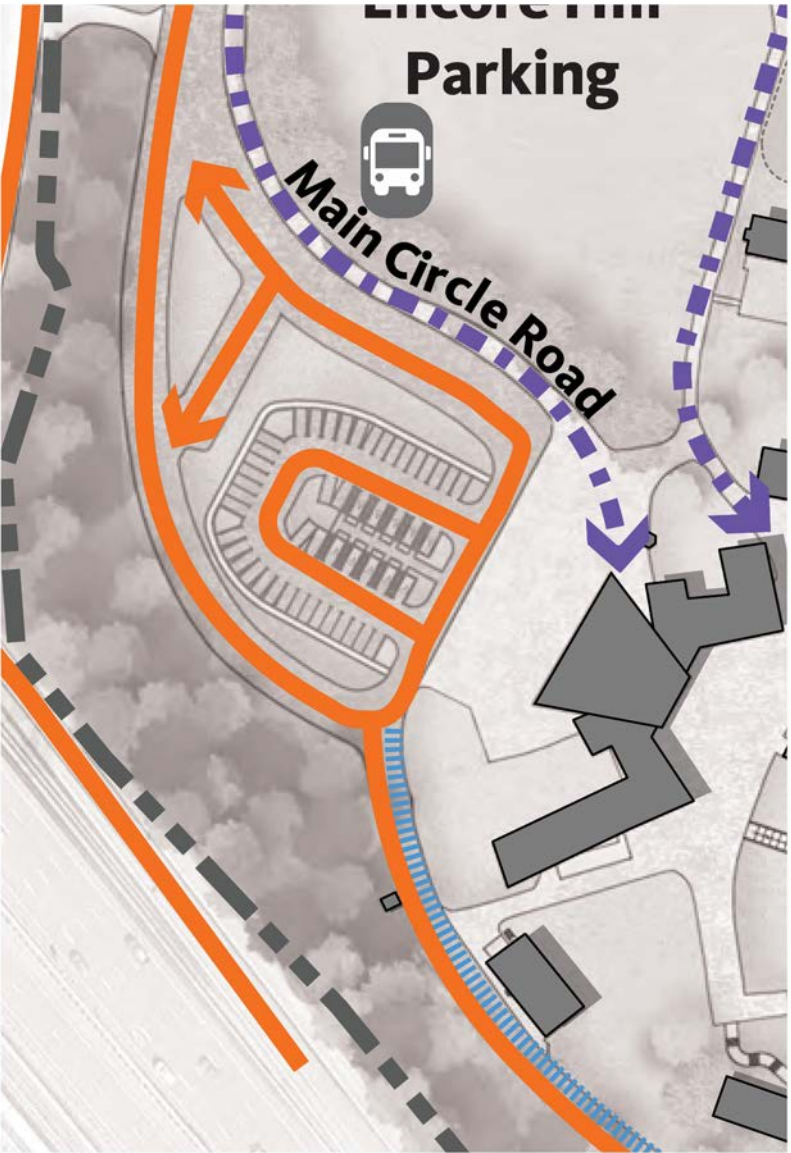


EXISTING STRUCTURES	
B	Box Office Trailer
C	Main Gate
CHANGES TO EXISTING STRUCTURES	
R	Main Gate Canopy
NEW STRUCTURES	
V	Security Perimeter
Shuttle Pick Up & Drop-off	

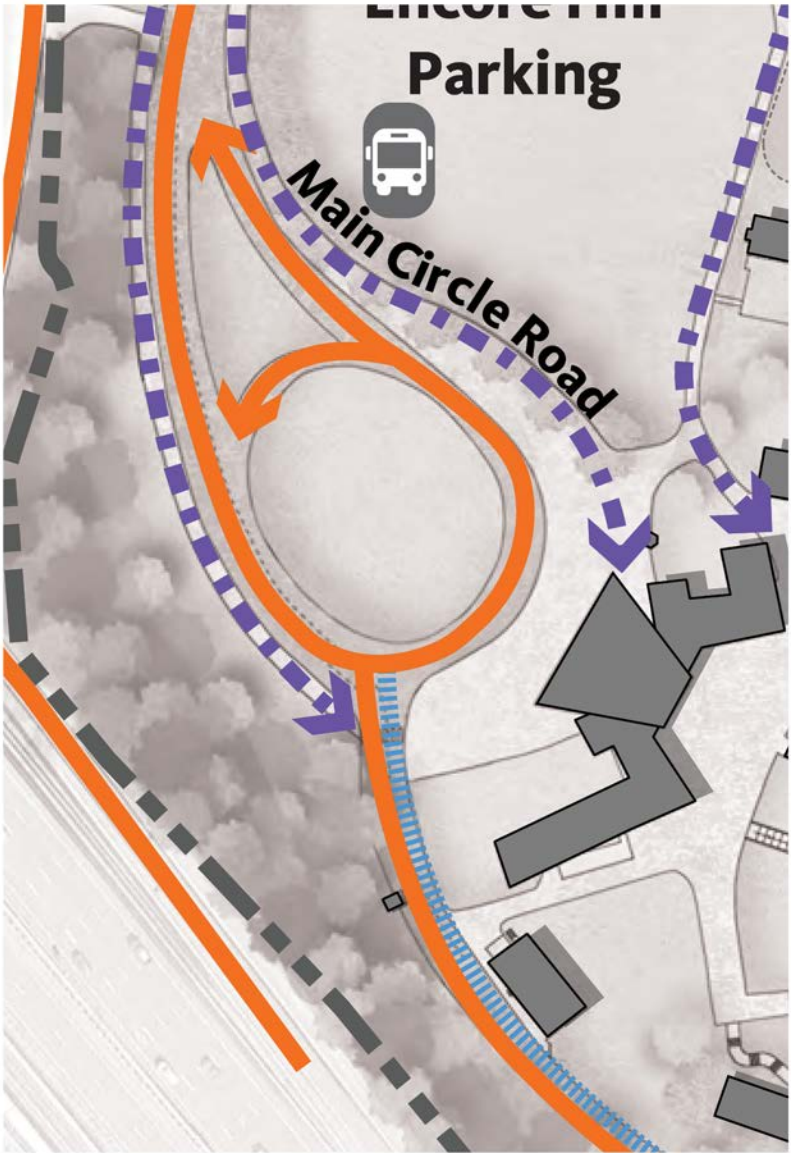
Proposed GMP Amendment

Main Gate Circulation Options - Circulation

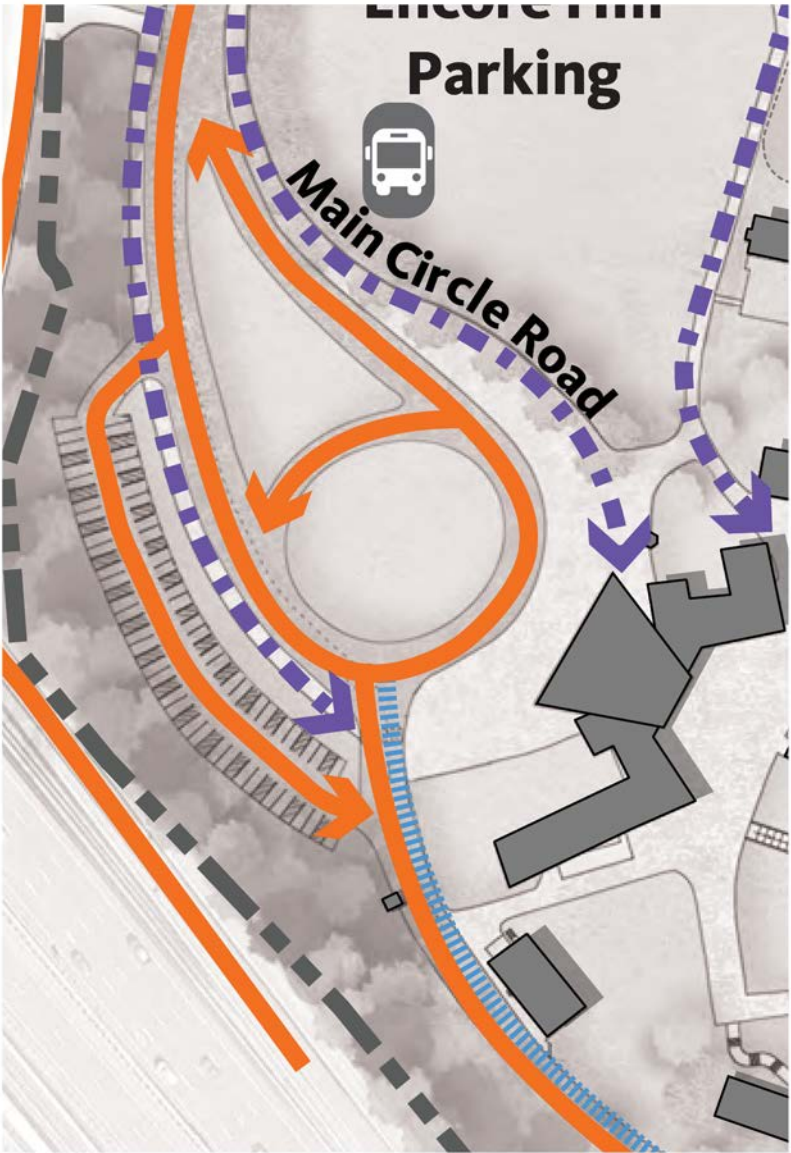
Option A: Center Parking



Option B: Removed Parking



Option C: South Parking



VEHICULAR & PEDESTRIAN CIRCULATION

Service Circulation

Vehicular Circulation

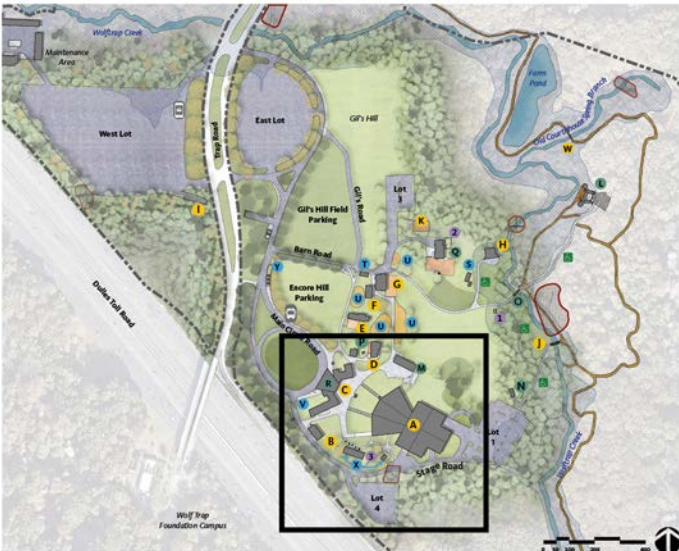
Pedestrian Circulation

Shuttle Pick Up & Drop-off

Proposed GMP Amendment

Filene Center Area

- Adds security apparatus and safety equipment to the Filene Center entrance
- Improves accessibility between the lower and upper levels of the Filene Center through installing an elevator with Stand A and reconfiguring Filene Center seating to accommodate improved circulation
- Replaces Food Services Stand A and South Gate Service Stand with new facilities near existing locations



May 25, 2021



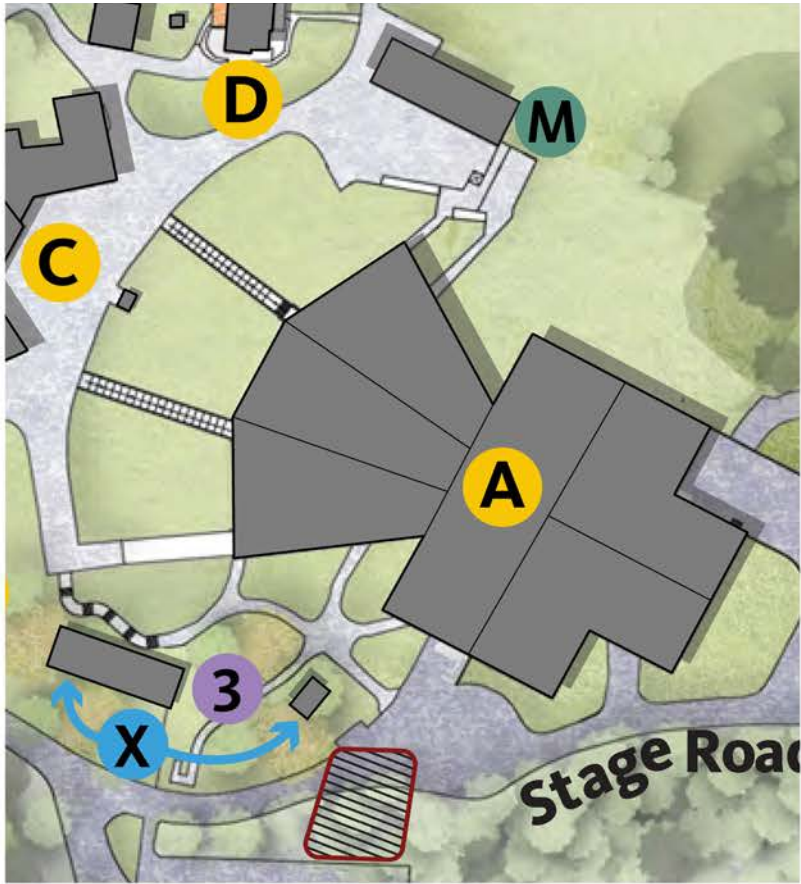
*Note: The three Main Gate Circulation options are not illustrated on the above map. These options are presented on pages 34-38.

EXISTING STRUCTURES	
A	Filene Center
B	Box Office Trailer
C	Main Gate
D	Administration Building
CHANGES TO EXISTING STRUCTURES	
M	Stand A Building
P	Cabin
R	Main Gate Canopy
NEW STRUCTURES	
V	Security Perimeter
X	Stand B Building and Restroom
REMOVED STRUCTURES	
3	South Gate Service Stand
	Streambank Stabilization and Trail Segment Realignment

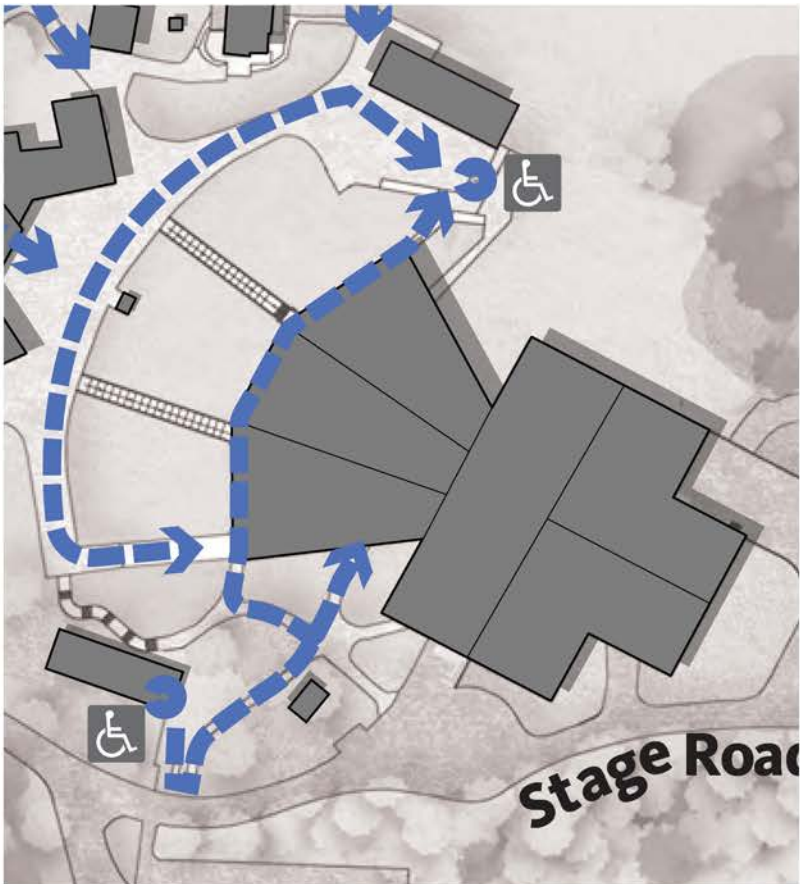
Proposed GMP Amendment

Filene Center Area - Stand A and Stand B Buildings

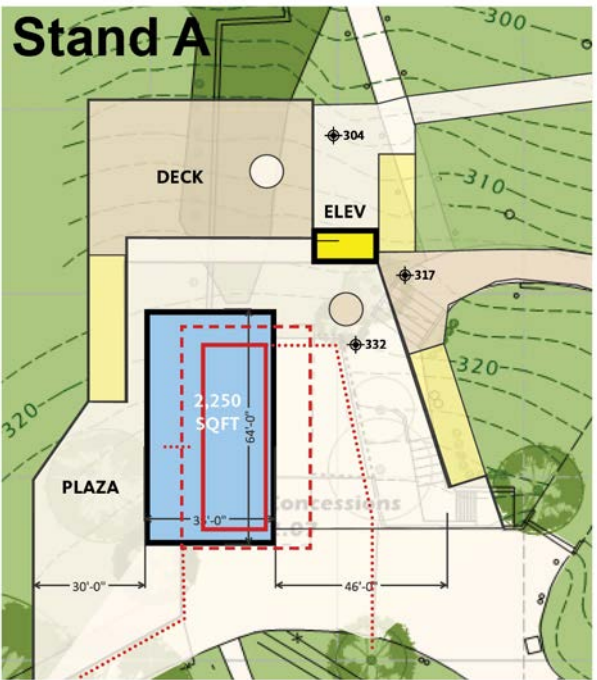
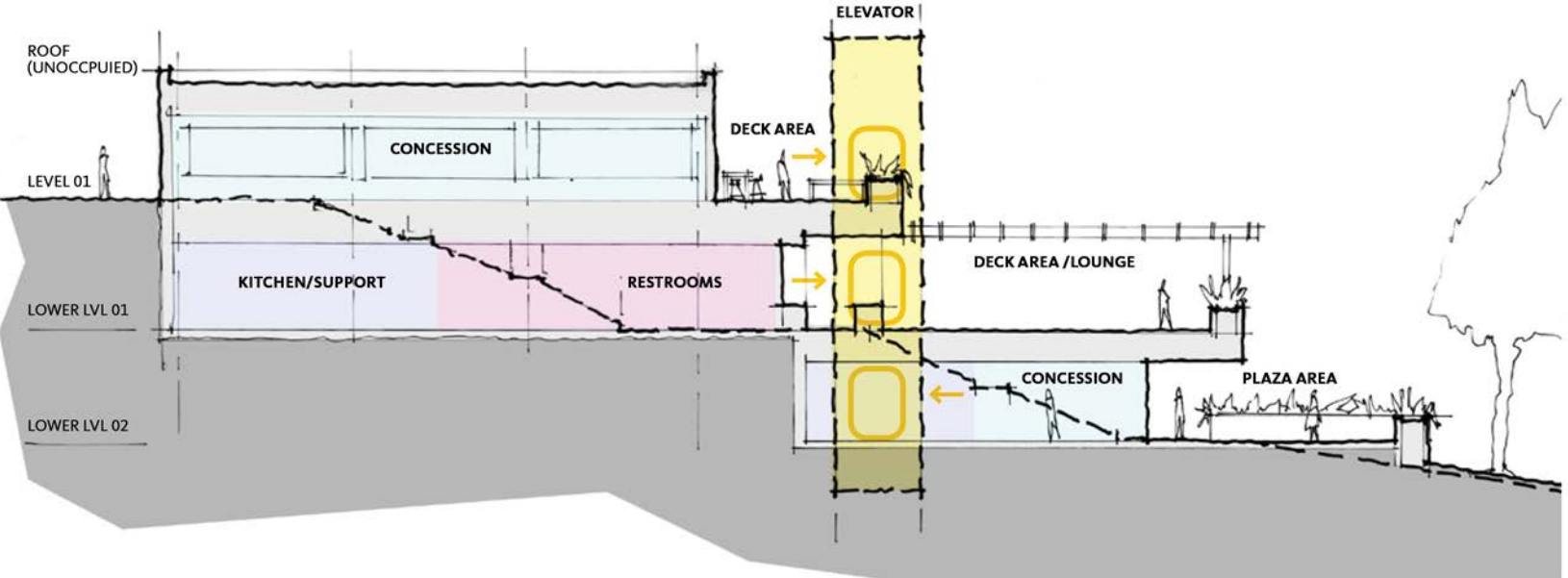
- Replaces Food Services Stand A with Stand A, a new universally accessible building
- Replaces the South Gate Service Stand with two new Stand B buildings
- Adds elevators at Stands A and B to provide universal access between the lower and upper levels of the Filene Center
- Stand A provides:
 - Double-sided concession service
 - Restrooms
 - Deck area/lounge and plaza area
- Stand B buildings provide:
 - Concession service
 - Restrooms
 - Covered security screening space
 - Roof-top accessible picnic area
- The implementation of Stand A and Stand B can occur independently of one another



EXISTING STRUCTURES
A Filene Center
C Main Gate
D Administration Building
CHANGES TO EXISTING STRUCTURES
M Stand A Building
NEW STRUCTURES
X Stand B Building and Restroom
REMOVED STRUCTURES
3 South Gate Service Stand
ACCESSIBLE CIRCULATION
Accessible Route
Accessible Elevator



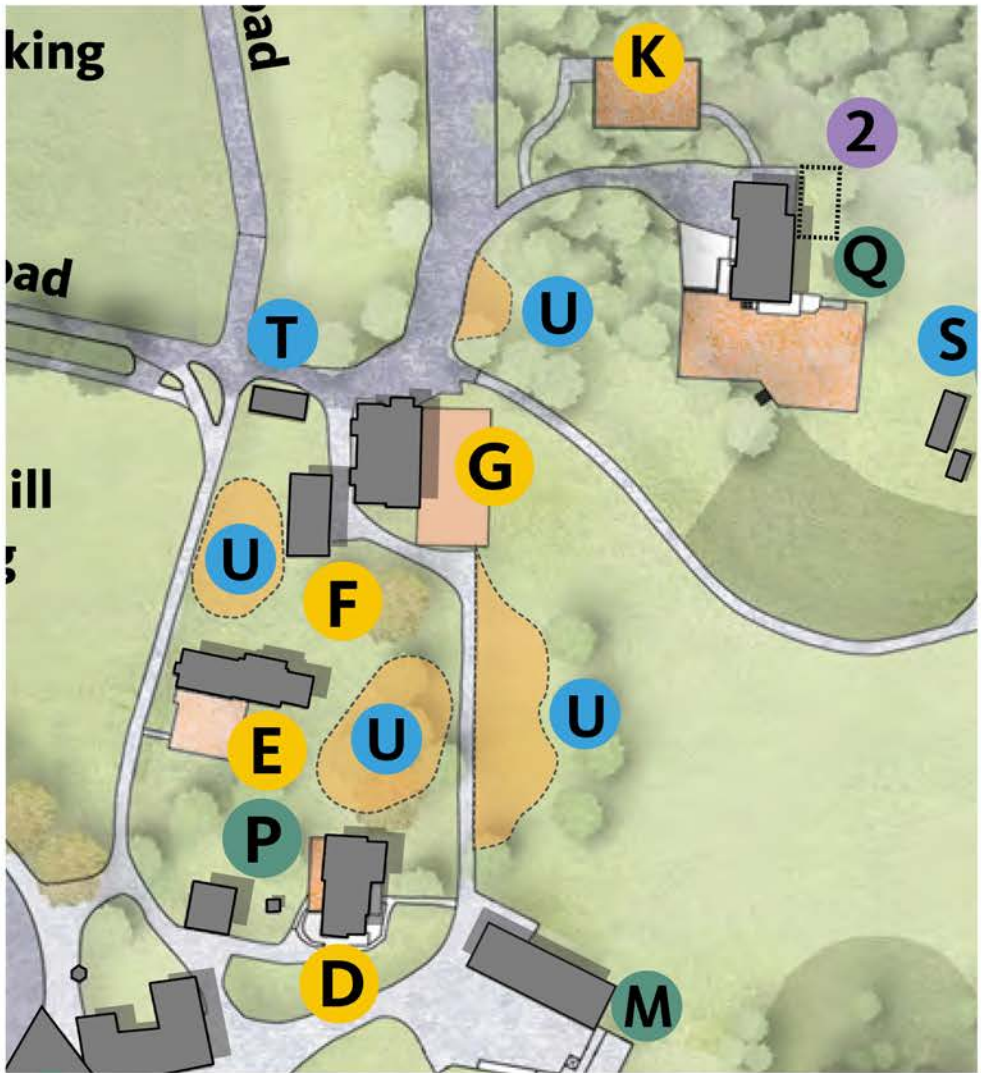
Stand A



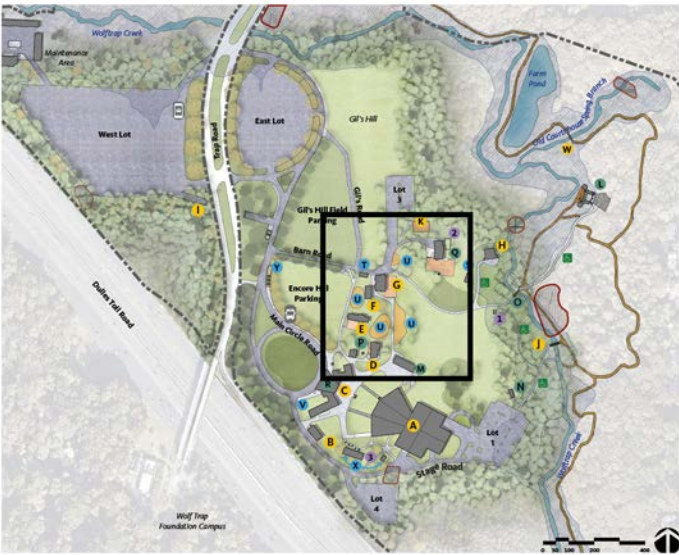
Proposed GMP Amendment

Northern Approach

- Adds universal accessible picnic deck areas overlooking the meadow hill and between Lot 3 and Ovations Restaurant
- Adds a new visitor contact structure along Barn Road which includes educational and interpretive displays
- Rehabilitates or replaces-in-kind the Associates Building with updated offices, catering kitchen, and a restroom
- Removes the Interpretation Staff Offices Trailer
- Rehabilitates the existing Cabin to support services, such as the U.S. Park Police, a visitor contact station, or usher space



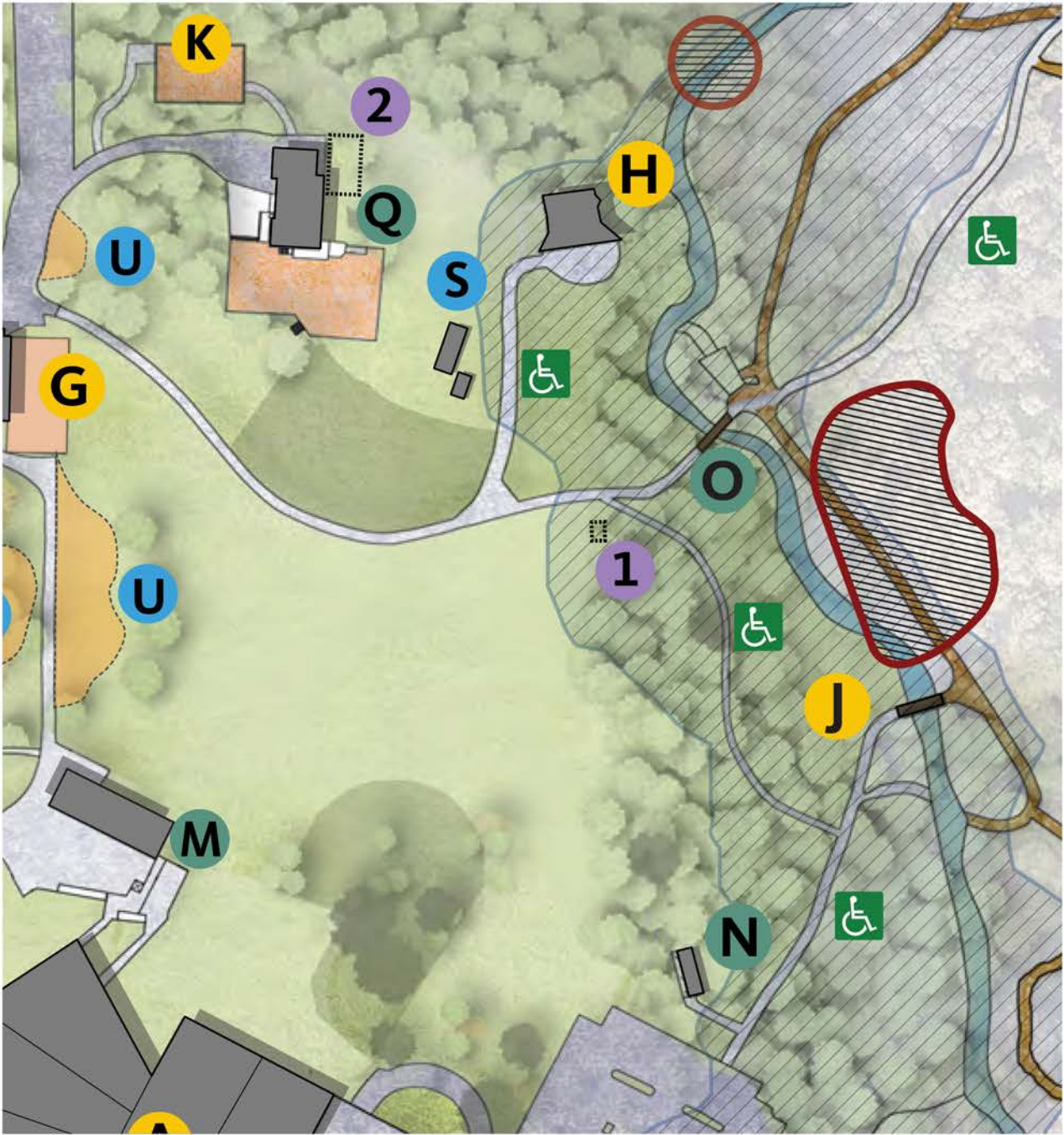
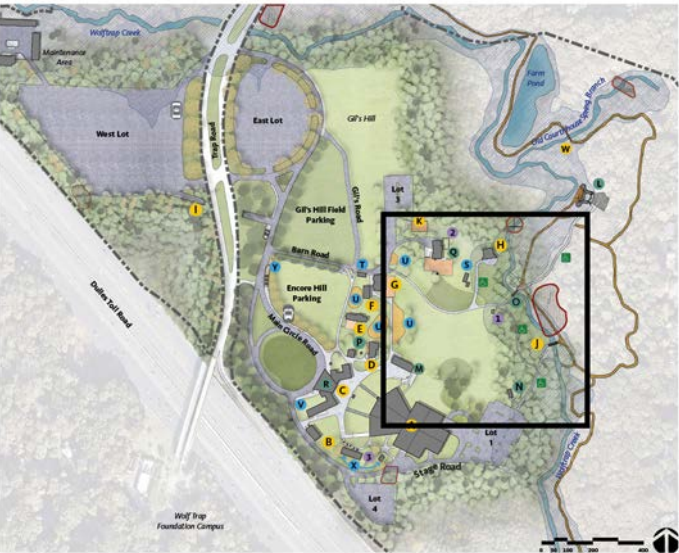
EXISTING STRUCTURES	
D	Administration Building
E	Encore Circle Lounge and Outdoor Pavilion
F	Barn
G	Ovations Restaurant and Outdoor Pavilion
K	Outdoor Pavilion
CHANGES TO EXISTING STRUCTURES	
M	Stand A Building
P	Cabin
Q	Associates Building and Outdoor Pavilion
NEW STRUCTURES	
S	Children's Theatre-in-the-Woods Pavilion
T	Visitor Contact Hub
U	Picnic Deck
REMOVED STRUCTURES	
2	Interpretation Staff Offices Trailer



Proposed GMP Amendment

East Meadow

- Adds an accessible path along the east edge of the meadow connecting to the Meadow Pavilion
- Replaces the Meadow Pavilion if the structure is substantially damaged by weather or flooding
- Adds a new Children’s Theatre-in-the-Woods Pavilion (exact location to be determined), which includes restroom facilities and potential concessions and/or information. Options include permanent and temporary, seasonal mobile facilities
- Removes the existing Meadow Kiosk
- Improves flood resilience of the Meadow Restrooms through improvements including streambank stabilization

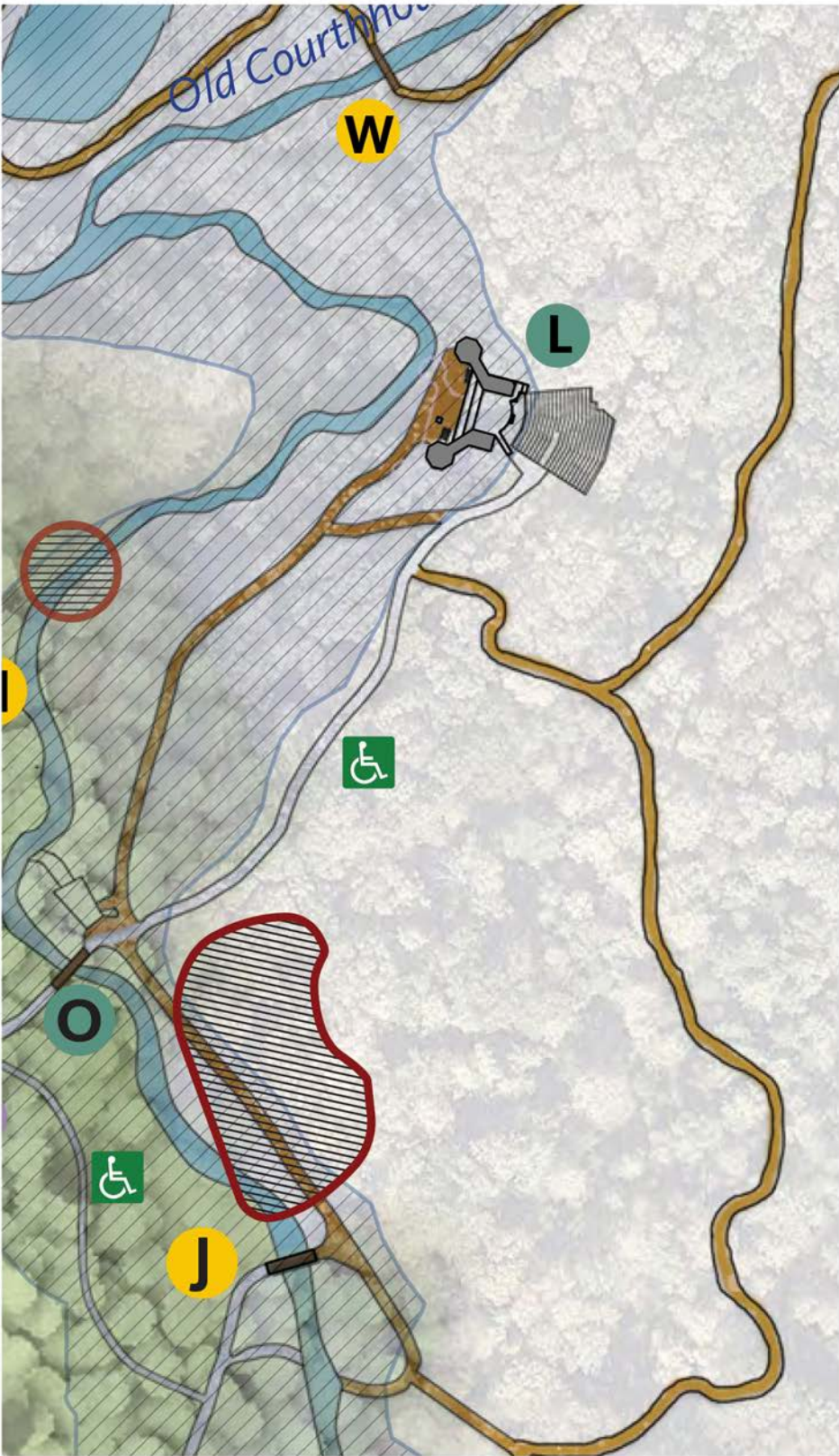


EXISTING STRUCTURES	
G	Ovations Restaurant and Outdoor Pavilion
H	Meadow Pavilion
J	Cart Bridge (FHWA Trail Bridge #2)
K	Outdoor Pavilion
CHANGES TO EXISTING STRUCTURES	
M	Stand A Building
N	Meadow Restroom
O	Pedestrian Bridge (FHWA Trail Bridge #1)
Q	Associates Building and Outdoor Pavilion
NEW STRUCTURES	
S	Children's Theatre-in-the-Woods Pavilion
U	Picnic Deck
REMOVED STRUCTURES	
1	Meadow Kiosk
2	Interpretation Staff Offices Trailer
	Streambank Stabilization and Trail Segment Realignment
	100-Year Floodplain
	New Accessible Path

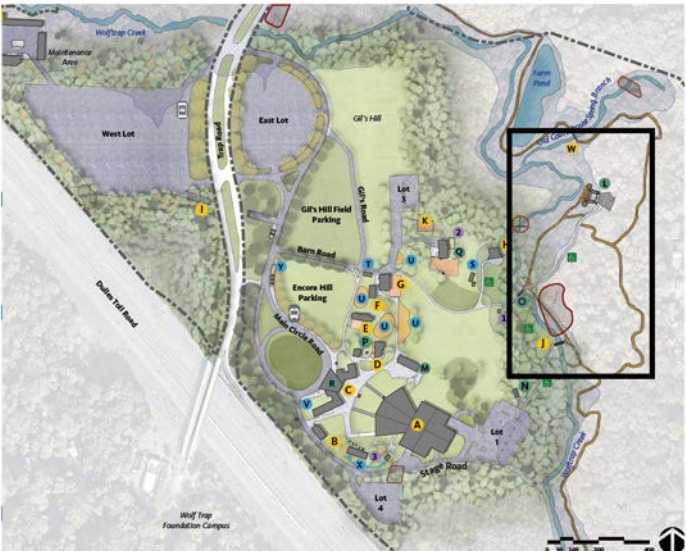
Proposed GMP Amendment

Children’s Theatre-in-the-Woods

- Adds an accessible path to the Children’s Theatre-in-the-Woods
- Realigns sections of trails in areas that have suffered erosion or other design issues
- Replaces a trail bridge
- Improves flood resilience of the Children’s Theatre-in-the-Woods through improvements including streambank stabilization



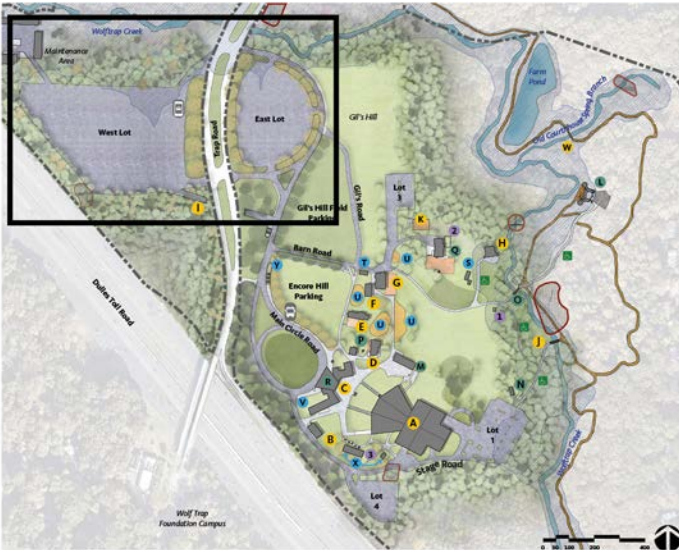
EXISTING STRUCTURES	
J	Cart Bridge (FHWA Trail Bridge #2)
W	Farm Pond Bridge
CHANGES TO EXISTING STRUCTURES	
L	Children’s Theatre-in-the-Woods
O	Pedestrian Bridge (FHWA Trail Bridge #1)
	Streambank Stabilization and Trail Segment Realignment
	100-Year Floodplain
	New Accessible Path



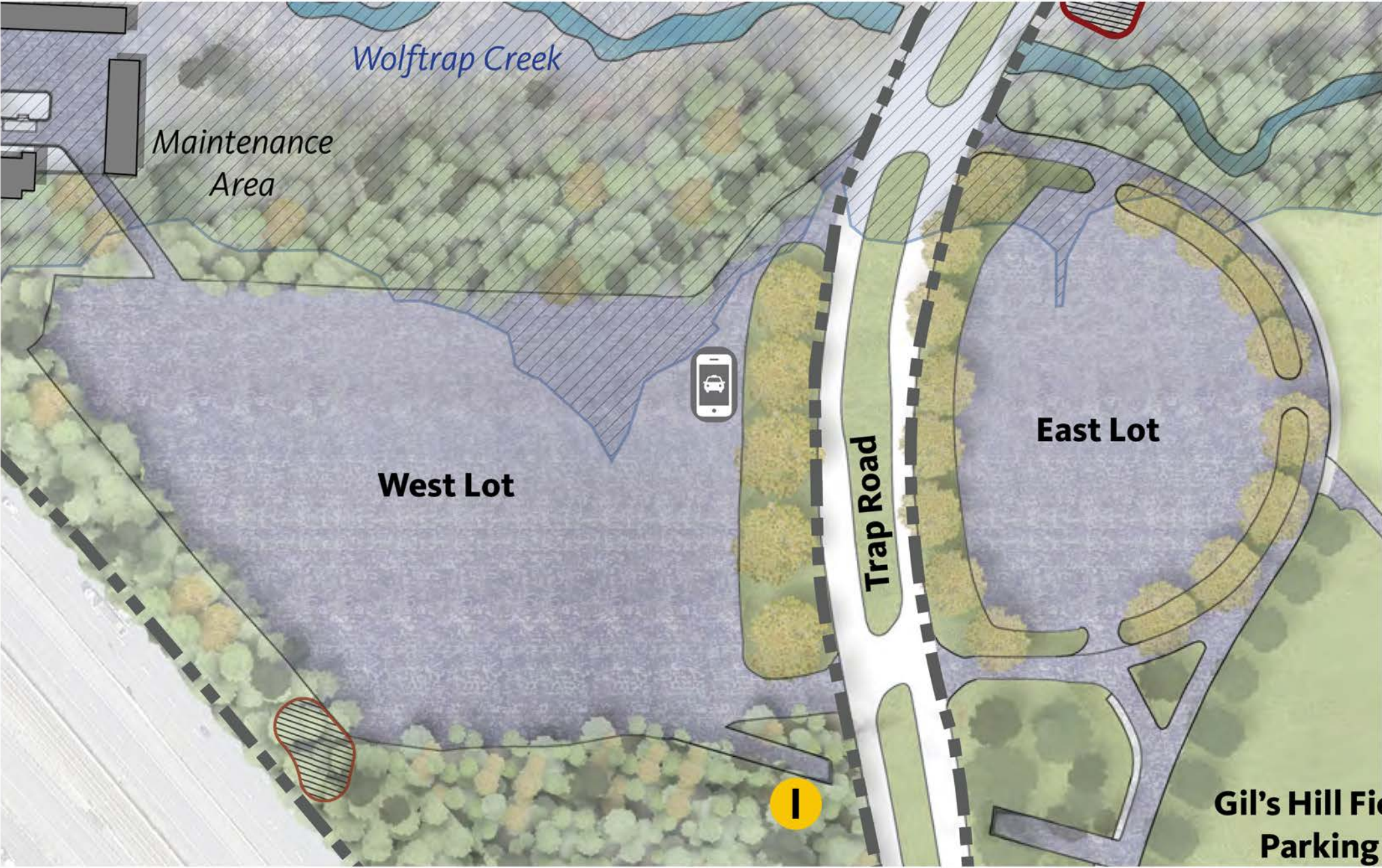
Proposed GMP Amendment

West and East Lots

- Adds a new formalized ride-share loading zone to the West Lot through minor restriping
- Incorporates stormwater management improvements, such as the use of permeable pavement, in the West and East Lots



May 25, 2021

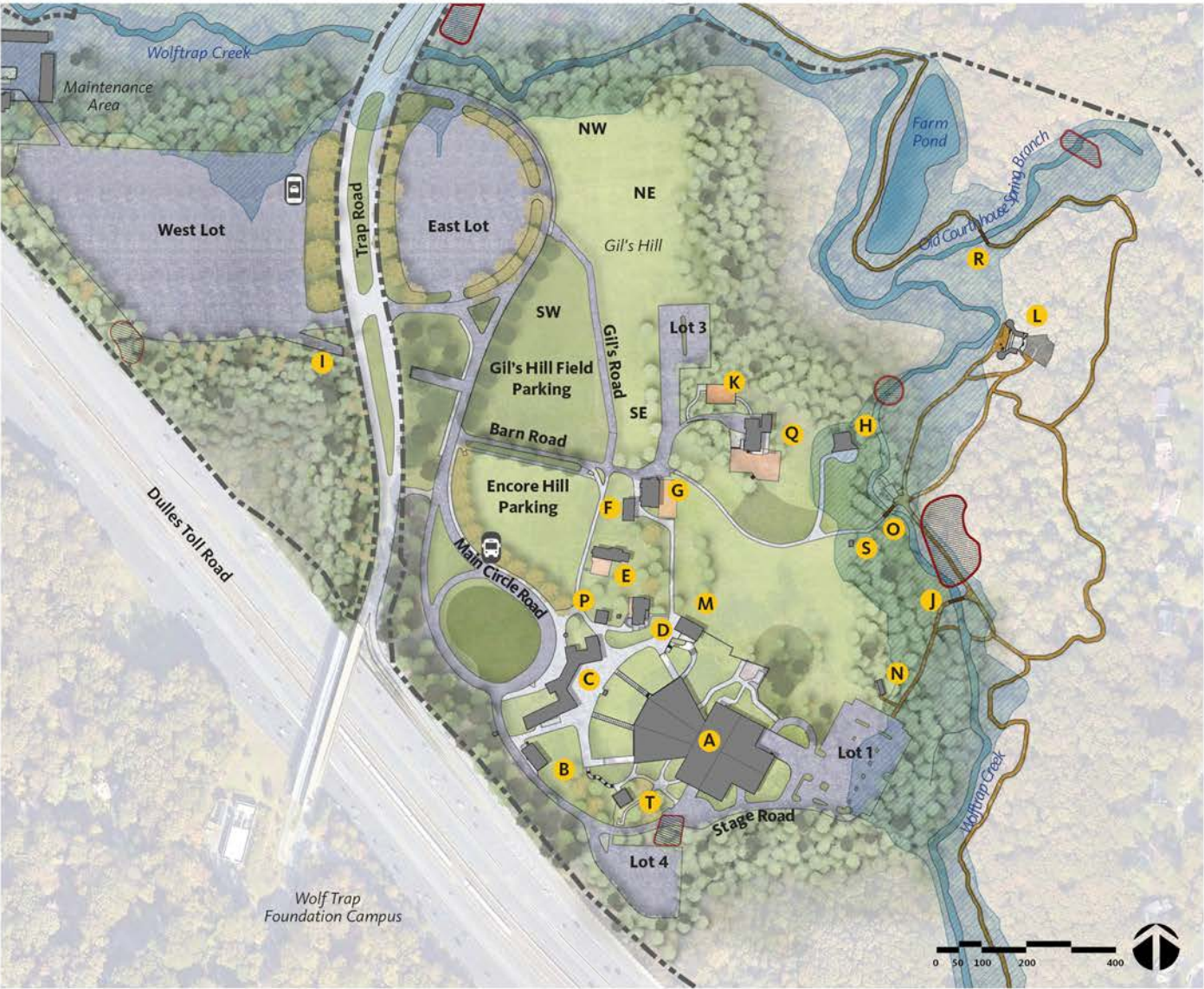


EXISTING STRUCTURES

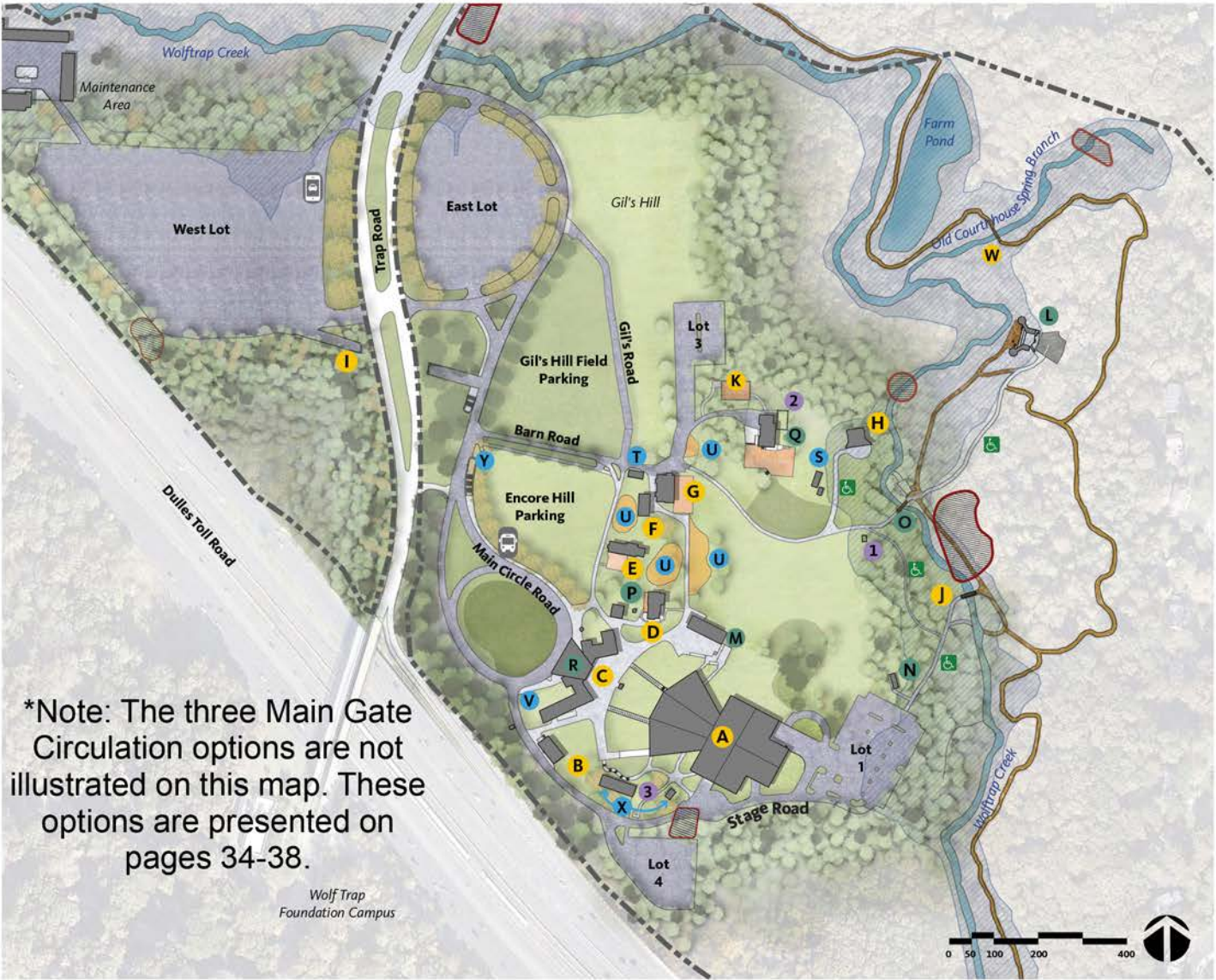
- Pedestrian Tunnel

- Streambank Stabilization and Trail Segment Realignment
- 100-Year Floodplain
- Rideshare

Existing Conditions







Proposed GMP Amendment







*Note: The three Main Gate Circulation options are not illustrated on this map. These options are presented on pages 34-38.

EXISTING STRUCTURES	
A Filene Center	O Pedestrian Bridge (FHWA Trail Bridge #1)
B Box Office Trailer	P Cabin
C Main Gate	Q Associates Building, Associates Outdoor Pavilion, and Interpretation Staff Offices Trailer
D Administration Building	R Farm Pond Bridge
E Encore Circle Lounge and Outdoor Pavilion	S Meadow Kiosk
F Barn	T South Gate Service Stand
G Ovations Restaurant and Outdoor Pavilion	 Area of Greatest Erosion
H Meadow Pavilion	 100-Year Floodplain
I Pedestrian Tunnel	 Rideshare Pick Up & Drop-off
J Cart Bridge (FHWA Trail Bridge #2)	 Shuttle Pick Up & Drop-off
K Outdoor Pavilion	
L Children's Theatre-in-the-Woods	
M Food Services Stand A	
N Meadow Restroom	

- O** Pedestrian Bridge (FHWA Trail Bridge #1)
- P** Cabin
- Q** Associates Building, Associates Outdoor Pavilion, and Interpretation Staff Offices Trailer
- R** Farm Pond Bridge
- S** Meadow Kiosk
- T** South Gate Service Stand
-  Area of Greatest Erosion
-  100-Year Floodplain
-  Rideshare Pick Up & Drop-off
-  Shuttle Pick Up & Drop-off

EXISTING STRUCTURES	
A Filene Center	
B Box Office Trailer	
C Main Gate	
D Administration Building	
E Encore Circle Lounge and Outdoor Pavilion	
F Barn	
G Ovations Restaurant and Outdoor Pavilion	
H Meadow Pavilion	
I Pedestrian Tunnel	
J Cart Bridge (FHWA Trail Bridge #2)	
K Outdoor Pavilion	
W Farm Pond Bridge	

CHANGES TO EXISTING STRUCTURES	
L Children's Theatre-in-the-Woods	
M Stand A Building	
N Meadow Restroom	
O Pedestrian Bridge (FHWA Trail Bridge #1)	
P Cabin	
Q Associates Building and Outdoor Pavilion	
R Main Gate Canopy	
NEW STRUCTURES	
S Children's Theatre-in-the-Woods Pavilion	
T Visitor Contact Hub	
U Picnic Deck	
V Security Perimeter	
X Stand B Building and Restroom	
Y New Pedestrian Tunnel	

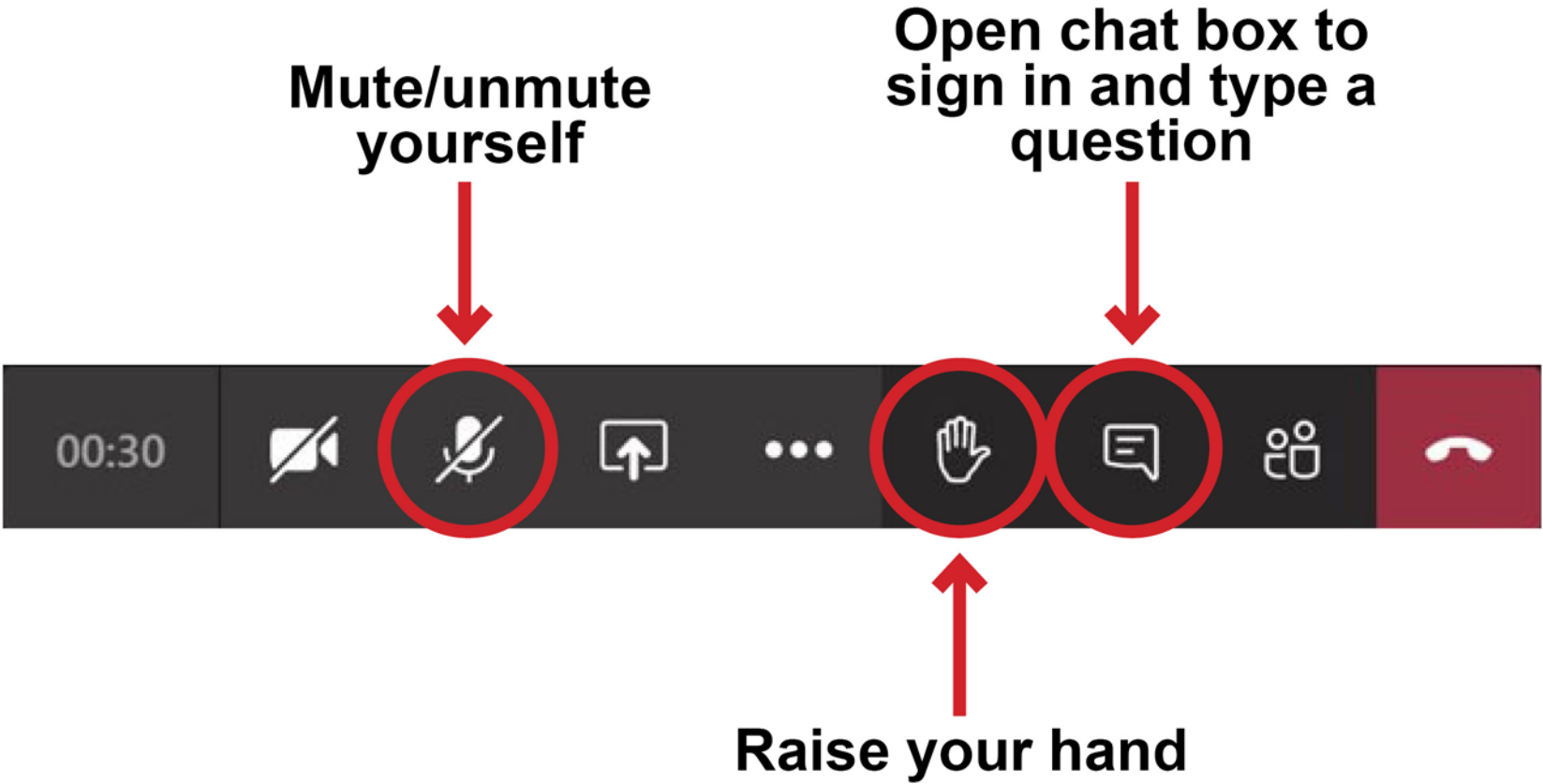
REMOVED STRUCTURES	
1 Meadow Kiosk	
2 Interpretation Staff Offices Trailer	
3 South Gate Service Stand	
 Streambank Stabilization and Trail Segment Realignment	
 100-Year Floodplain	
 Rideshare	 Shuttle Pick Up & Drop-off
 New Accessible Path	

How Can You Submit Comments?

- **Online:** Submit comments by **June 25, 2021** at <https://parkplanning.nps.gov/WolfTrapPlan>
- **Written comments can be mailed to:**
Superintendent
Attn: GMP Amendment EA
Wolf Trap National Park for the Performing Arts
1551 Trap Road
Vienna, VA 22182
- **Mailed comments** must be postmarked by **June 25, 2021** to receive consideration

Please Note: Before including your address, phone number, e-mail address, or other personal identifying information in your comment, you should be aware that your entire comment – including your personal identifying information – may be made publicly available at any time. While you can ask us in your comment to withhold your personal identifying information from public review, we cannot guarantee that we will be able to do so.

Questions?





Thank You!