



AMACHE REMEMBERED

DEDICATED TO  
THE 31 PATRIOTIC  
JAPANESE AMERICANS  
WHO VOLUNTEERED  
FROM AMACHE AND  
DUTIFULLY GAVE  
THEIR LIVES IN  
WORLD WAR II TO  
THE APPROXIMATELY  
7000 PERSONS WHO  
WERE RELOCATED  
AT AMACHE AND TO  
THE 120 WHO DIED  
THERE DURING THIS  
PERIOD OF RELOCATION  
AUGUST 27, 1942  
OCTOBER 15, 1945

SPONSORED BY  
DENVER CENTRAL OPTIMIST CLUB

HONOR ROLL

MASAO NAKAGARI  
NED NAKAMURA  
ARNOLD OHAI  
KATSUNOSHIN OHIDA  
LLOYD ONOYE  
CALVIN SAITO  
GEORGE SAITO  
MASAMI SAKAMOTO  
MASAO SHIGEZANE  
TOSHIKAZU SHOH  
ROBERT SUEOKA  
SHIGEO TABUCHI  
TADASHI TAKEUCHI  
HARRY TOKI SHIMA  
BILL IWAO YAMADA  
JOE YASUDA

# Amache Special Resource Study

Virtual Public Meeting  
National Park Service  
U.S. Department of the Interior

*Photo courtesy of John Tonai*





# Agenda

- Addressing Terminology
- Background on Amache
- Special Resource Study Process
- Breakout Sessions

*Photo courtesy of John Tonai*



# Housekeeping

- How to navigate Zoom
- How to mute/unmute yourself
- How to raise your hand
- Please do not take calls during this session



# The Study Team

- Andrew White, Visitor Use Specialist
- Anna Tamura, Planning Portfolio Manager, Subject Matter Expert
- Becky Rinas, Planner
- Cherri Espersen, Program Analyst
- Chuck Lawson, Project Manager
- Cynthia Romero Nelson, Project Supervisor
- Dana Ogo-Shew, Cooperative Partner
- Hanako Wakatsuki-Chong, Superintendent, Subject Matter Expert
- Jeremy Sweat, Chief of Planning and Compliance
- Justin Henderson, Heritage Partnerships Program Manager
- Kara Miyagishima, Subject Matter Expert
- Kelly Horvath, Visitor Use Specialist
- Phyllis Pineda Bovin, Natural Resource Specialist
- Westby Mize, Historian





## Addressing Terminology

- Incarceration vs. Internment
- Forced Removal vs. Evacuation



# Our Collective History

“This is not just a Japanese American story, but an American story with implications for the world.” – Frank Kitamoto

*Photos courtesy of Hanako Wakatsuki and Densho, the Kinoshita Collection*



# Background of Amache

## Sites Associated with the WWII Japanese American Incarceration





# Amache Statistics

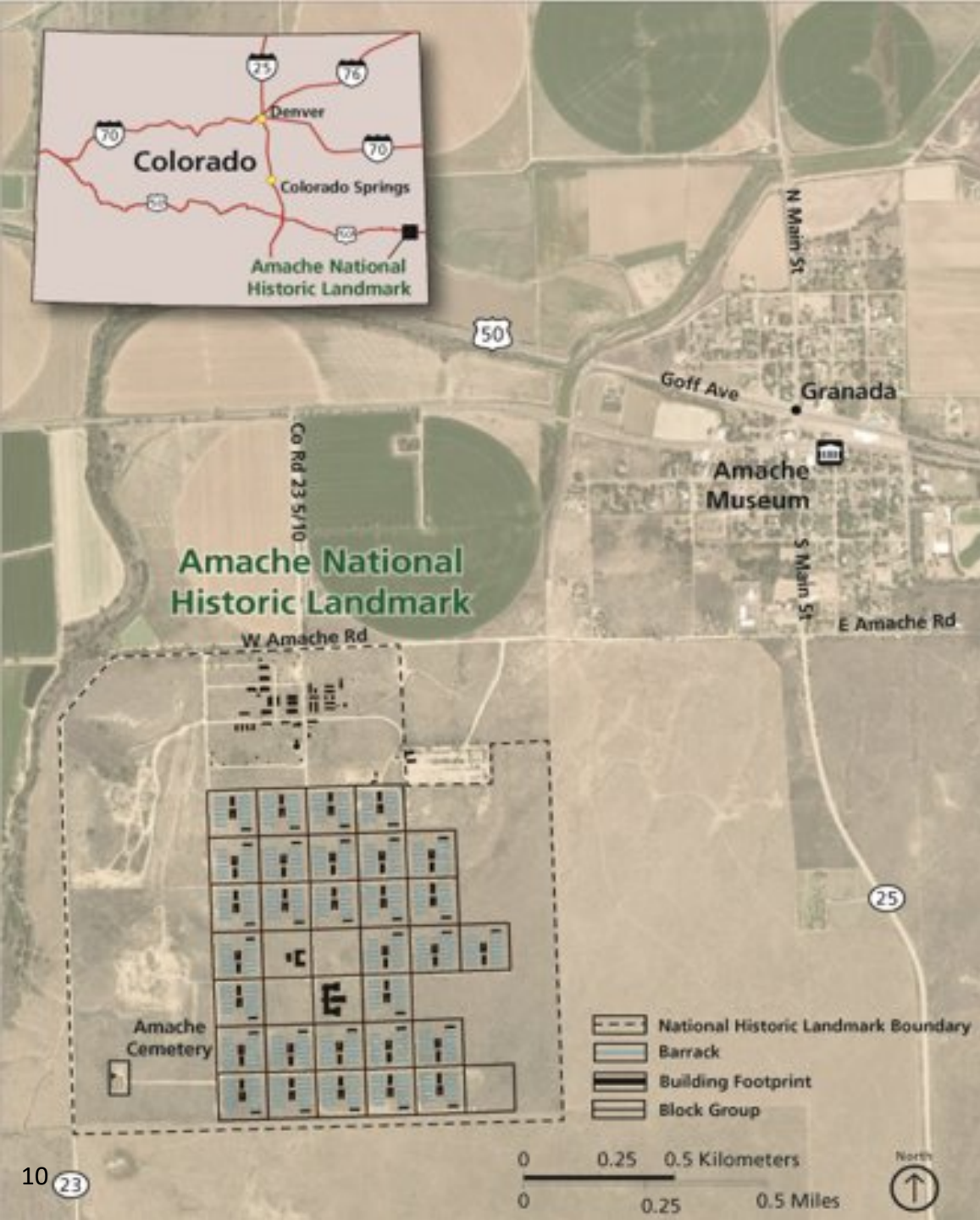
- Most incarcerated were from California
- In operation for 3 years



- 10,000 acres
- 10,000 people
- Peak population: 7,318 people
  - Colorado's 10<sup>th</sup> largest city







# Overview and Layout



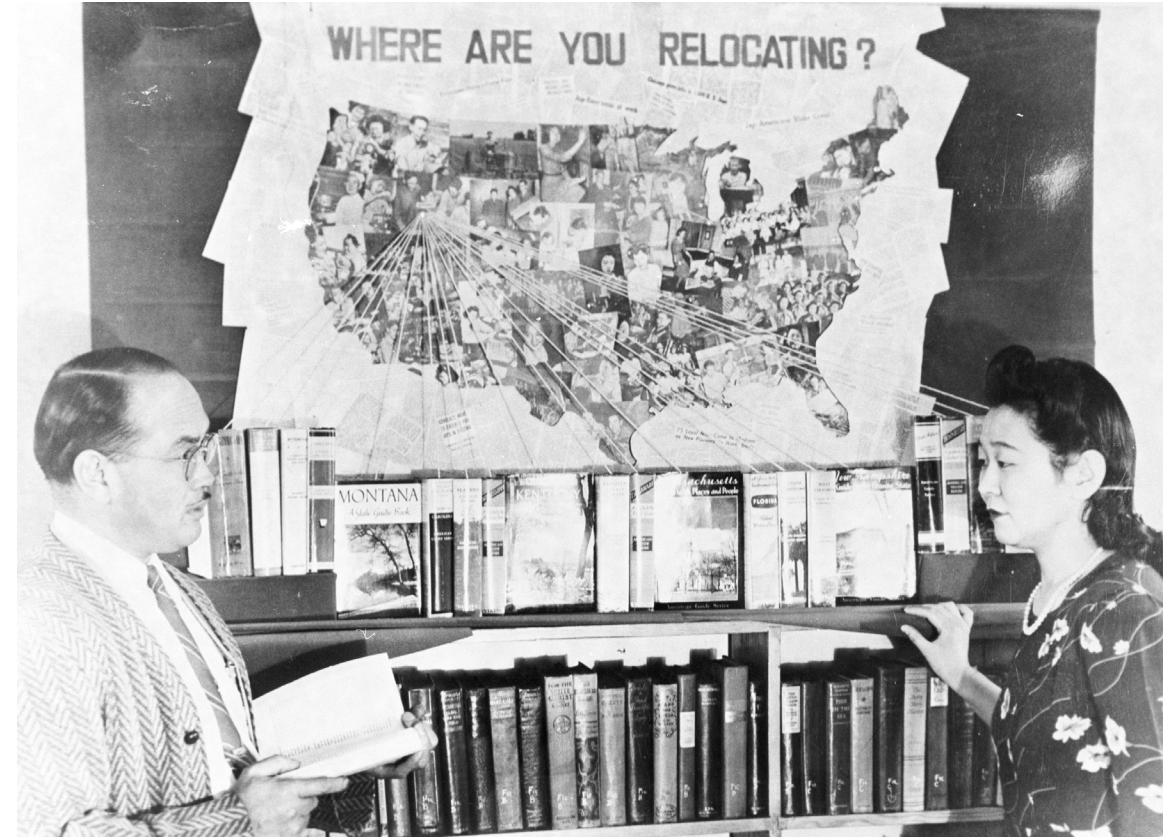
# Living Conditions and Agriculture



*Photos courtesy of the National Archives and Records Administration*



# Closing of the Camps





# Today at Amache





# NPS Involvement with the WWII Japanese American Incarceration Sites



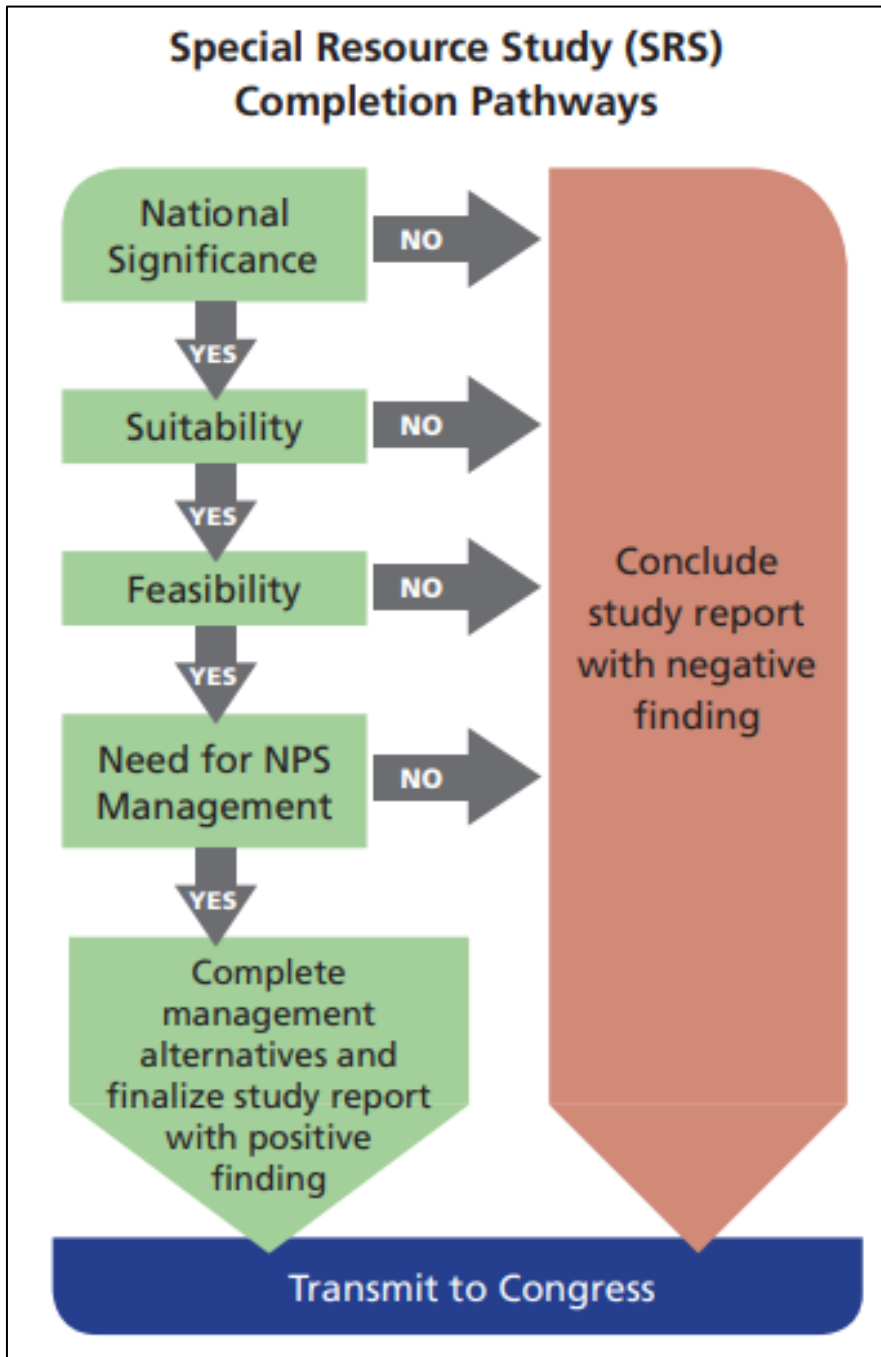
- Manzanar National Historic Site, CA – 1992
- Minidoka National Historic Site, ID – 2001
- Japanese American Confinement Sites (JACS) Grant Program – 2006
- Bainbridge Island Japanese American Exclusion Memorial, WA – 2008
- Tule Lake National Monument, CA – 2008
- Honouliuli National Historic Site, HI – 2015

*Photo courtesy of Julie Abo*



# John D. Dingell, Jr. Conservation, Management, and Recreation Act of 2019





# Special Resource Study (SRS) Process

- Linear process
- Negative finding for ANY criterion = conclude study
- National Environmental Policy Act (NEPA) pathway – Categorical Exclusion



# Criterion 1 – National Significance

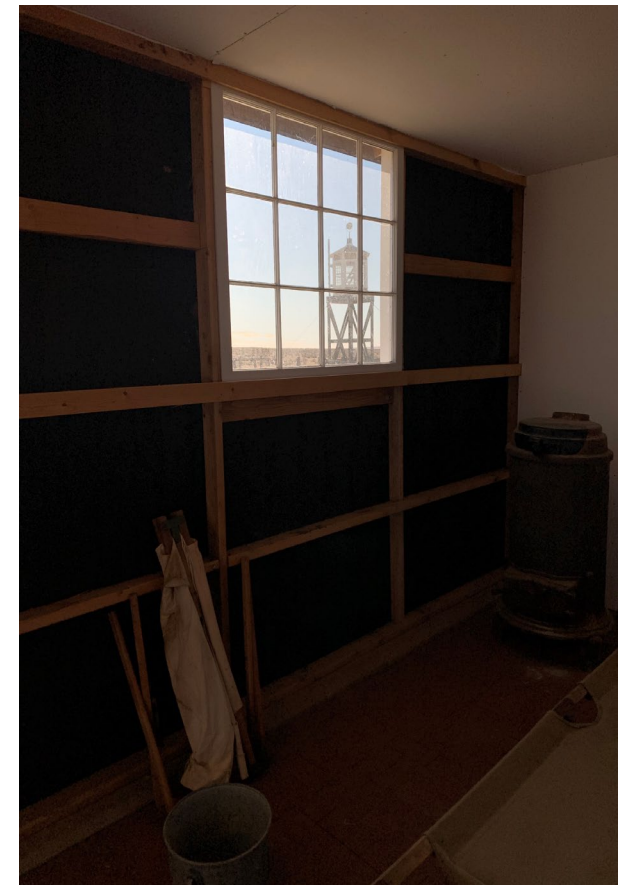


- Amache is an exemplary site of national significance based on its designation as a National Historic Landmark.
  - Outstanding example of a WWII incarceration site
  - Unusually sympathetic reception from Colorado Governor Ralph L. Carr
  - Did not experience the same level of conflict and violence as in other incarceration sites

# Criterion 2 – Suitability



- Focus on suitability of the resource type.
  - Is it unique?
  - Is it NOT already represented?
  - Is it NOT already protected by others?
- Comparative analysis of other similar protected sites



*Photos courtesy of the National Park Service*



# Criterion 3 – Feasibility

- Is the site of sufficient size and appropriate configuration to ensure sustainable resource protection and enjoyment; and to be capable of efficient administration by the NPS at a reasonable cost?



# Criterion 4 – Need for NPS Management



- Is direct management by the NPS the “clearly superior” approach?
- Compare management options
  - Continued management
  - Management by another entity
    - Private or non-profit
    - State or other federal agency
  - NPS management:
    - Affiliated area
    - New park unit



# Other Considerations



- Study findings are approved by the National Park Service
- Sites can become a unit of the National Park System without an SRS report
- Park units are created through acts of Congress OR Presidential Proclamations
- About 1 in 4 studies result in a recommendation for inclusion in NPS



# How to Participate

- Public comment and engagement period is open to June 30, 2021
  - Participate in a meeting
  - Submit a comment online (project website)
    - <http://parkplanning.nps.gov/amache>
  - Send a written comment to:
    - National Park Service
    - 12795 West Alameda Parkway
    - PO Box 25287
    - Denver, CO 80225-0287
  - Email: Amache\_Study@nps.gov





# Questions?

National Park Service

U.S. Department of the Interior

Amache Special Resource Study

<http://parkplanning.nps.gov/Amache>



# Breakout Sessions

- Discussions in smaller groups:
  - Opportunity to share YOUR thoughts and ideas
- Feedback expressed in the breakout sessions will be noted and added to the comment record for this study
  - Summary notes will be available on project website
- Logistics of moving into breakout sessions