



## George W. Bush Childhood Home Special Resource Study

---


### An Introduction

Project website:  
[parkplanning.nps.gov/gwbush](https://parkplanning.nps.gov/gwbush)

January 2021

# Project website: [parkplanning.nps.gov/gwbush](https://parkplanning.nps.gov/gwbush)





## National Park Service

[Find a Park](#) [Discover History](#) [Explore Nature](#) [Get Involved](#) [Working With Communities](#) [Teachers](#) [Kids](#) [About Us](#)

### PEPC Planning, Environment & Public Comment

[PEPC Home](#) [Documents by Park](#) [Policy/Links](#) [Park Planning](#) [Search Documents](#)

#### PROJECT LINKS


[Project Home](#)  
[Plan Process](#)  
[Meeting Notices](#)  
[Links](#)  
[Document List](#)  
[Open For Comment \(1\)](#)

A comment period for this project closes **Feb 28, 2021**:  
**53** Days, **15** Hours, **45** Min.

## George W. Bush Childhood Home Special Resource Study

[Denver Service Center](#) » [George W. Bush Childhood Home Special Resource Study](#) » [Document List](#)

As directed by Congress in 2019, the National Park Service is preparing a special resource study of the George W. Bush Childhood Home located at 1412 West Ohio Avenue, Midland, Texas, to evaluate its potential for inclusion within the National Park System. The Bush family—which includes two Presidents, a First Lady, and two Governors—lived in the house from November 1951 to November 1955. The National Park Service will use this website to display public information throughout the course of this study. Meeting dates and locations will be posted here, along with project updates and information about how to submit comments online or via mail.



#### INTRODUCTION TO THE GEORGE W. BUSH CHILDHOOD HOME SPECIAL RESOURCE STUDY

The purpose of this special resource study is to gather information about the George W. Bush Childhood Home through research and public input, and then to report these findings to Congress. The special resource study will evaluate the potential for inclusion of the property in the national park system based upon whether it meets established criteria for national significance, suitability, feasibility, and the need for NPS management. Please use the "Links" tab on the left to find additional information on the criteria used to evaluate new national parklands.

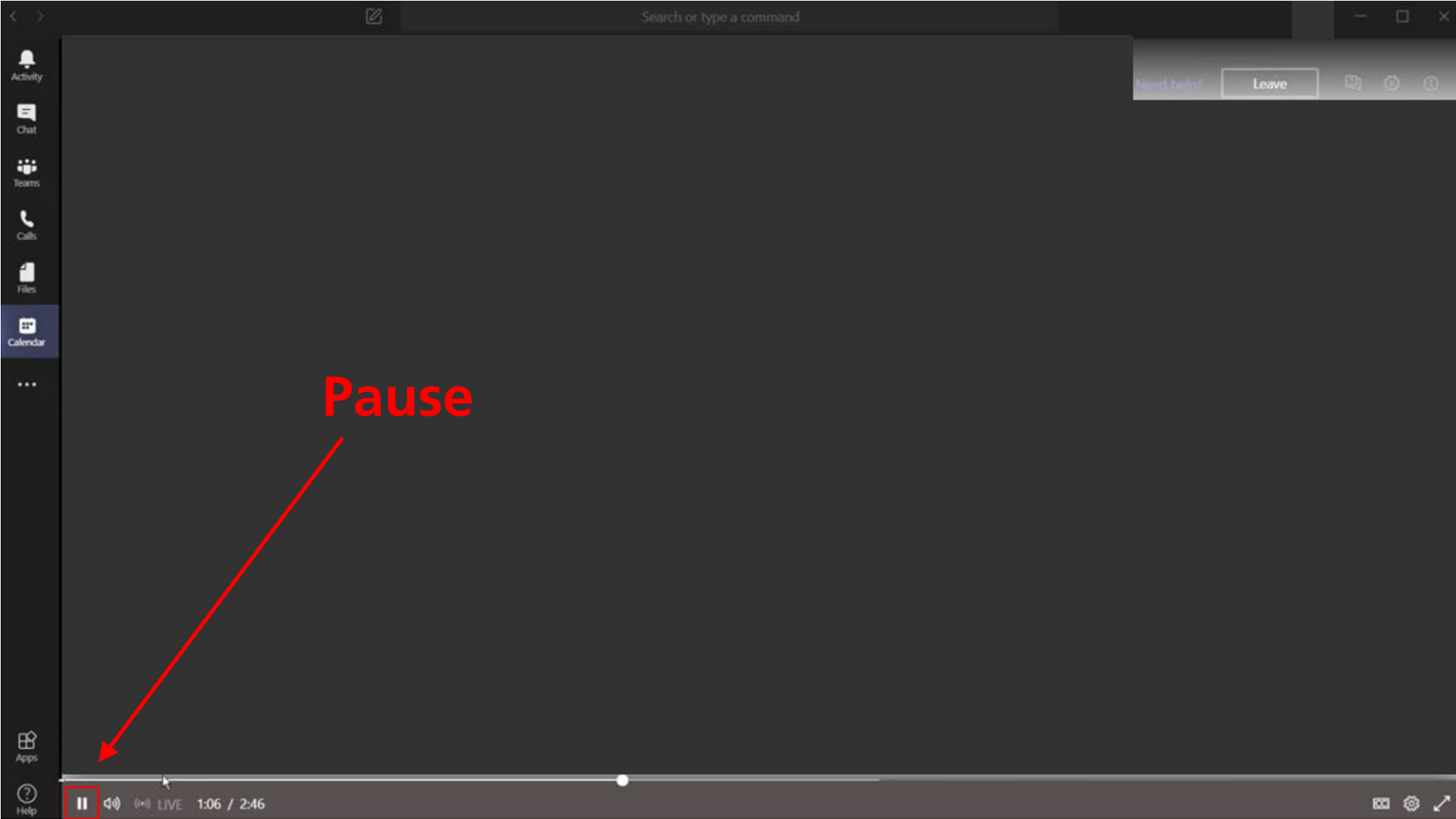
2

# Using the project website



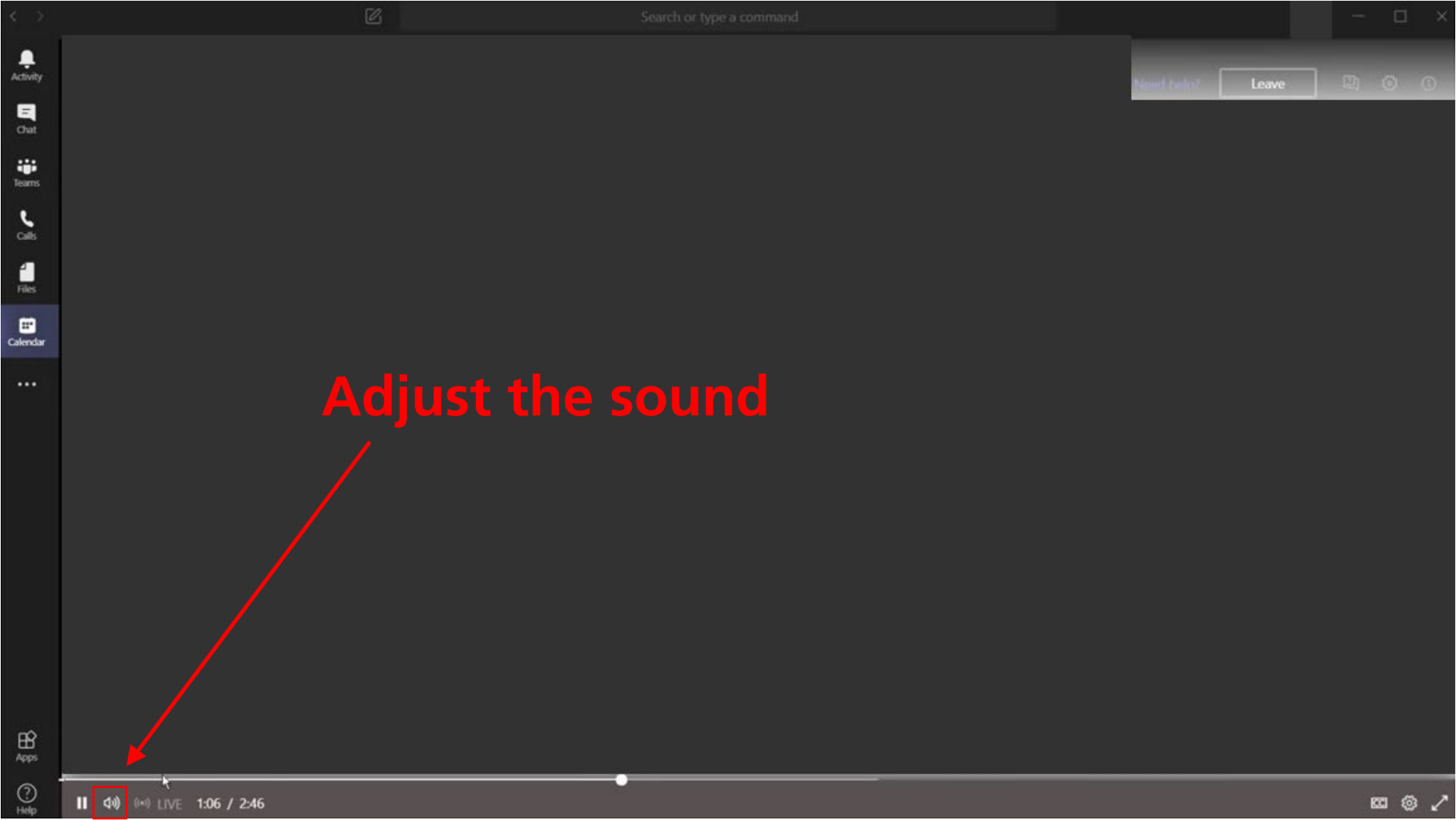
A screenshot of the National Park Service website's PEPC (Planning, Environment &amp; Public Comment) section. The top navigation bar includes links like "Find a Park", "Discover History", "Explore Nature", "Get Involved", "Working With Communities", "Teachers", "Kids", and "About Us". Below this is a sub-navigation bar for "PEPC Planning, Environment &amp; Public Comment" with links for "PEPC Home", "Documents by Park", "Policy/Links", "Park Planning", and "Search Documents". The main content area is titled "Document List" and shows a breadcrumb trail: "Denver Service Center » George W. Bush Childhood Home Special Resource Study". A red oval highlights a list of documents for review or comment: "Public Presentation\_January 26, 2021", "Newsletter for the George W. Bush Childhood Home Special Resource Study", and "Frequently Asked Questions". A sidebar on the left contains links for "Project Home", "Plan Process", "Meeting Notices", "Links", "Document List", and "Open For Comment (2)". At the bottom, a comment period notice states: "A comment period for this project closes Feb 28, 2021: 37 Days, 11 Hours, 42 Min."

# Instructions for this virtual meeting





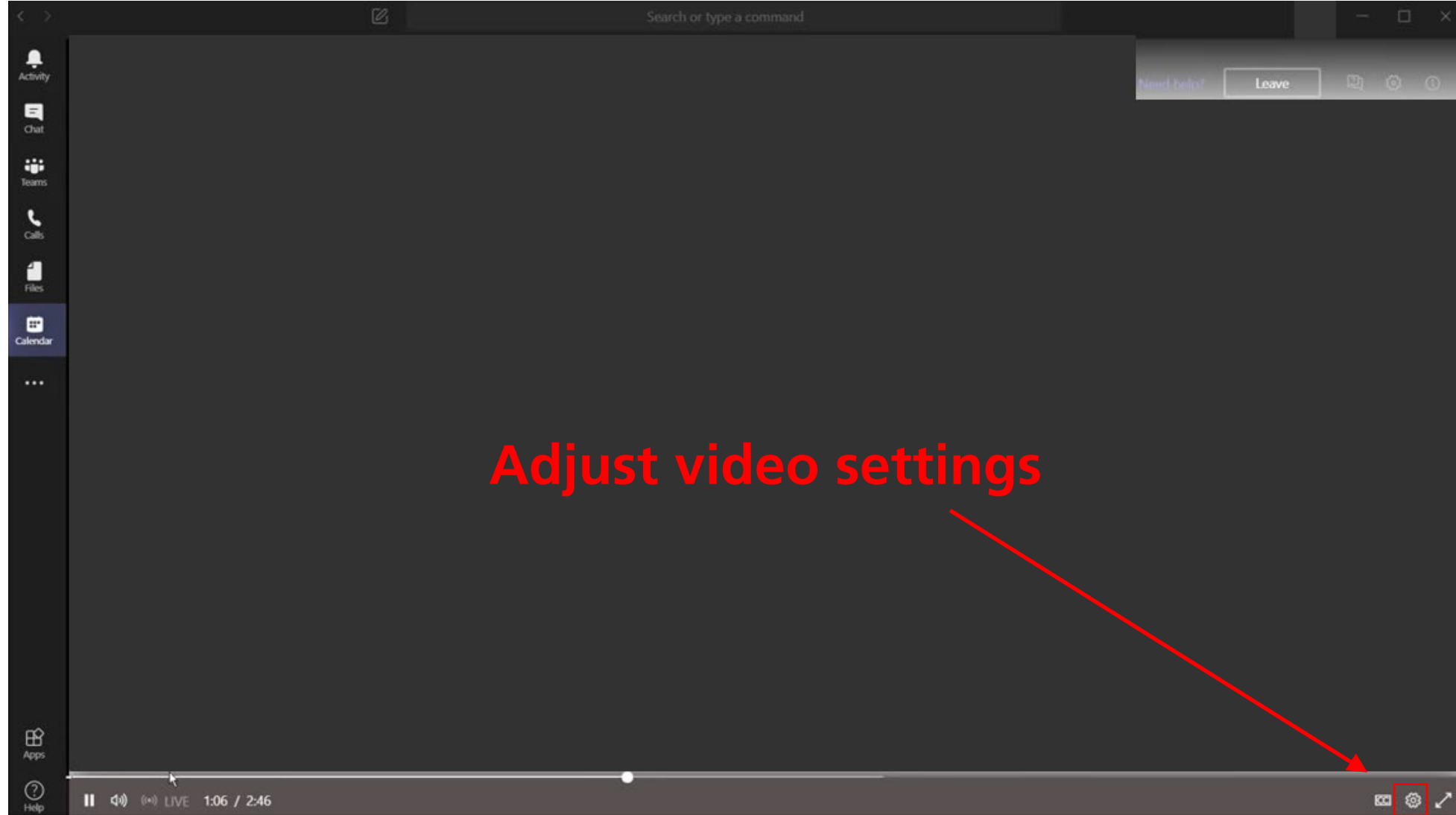
# Instructions for this virtual meeting



Adjust the sound



## Instructions for this virtual meeting



# Instructions for this virtual meeting



Activity

Chat

Teams

Calls

Files

Calendar

...

Apps

Help

Search or type a command

Need help?

Leave

View or hide Q&A

Live event Q&A

Featured My questions Most recent

No featured questions yet

Ask a question





## George W. Bush Childhood Home Special Resource Study

---

### An Introduction

Project website:  
[parkplanning.nps.gov/gwbush](https://parkplanning.nps.gov/gwbush)

January 2021



# Meet the National Park Service Study Team

---



Becky Rinas  
Planner

NPS Regional Office  
DOI Regions 6, 7 and 8



Cherri Espersen  
Program Analyst

NPS Park Planning  
and Special Studies



Erika Wudtke  
Program Analyst

NPS Park Planning  
and Special Studies



Carrie Miller  
Project Manager

NPS Denver Service  
Center



Hilary Retseck  
Cultural Resource Specialist

NPS Denver Service  
Center



Marlina Greene  
Project Specialist

NPS Denver Service  
Center



# Goals of the Meeting



George W. Bush Childhood Home dedication, 2006 –  
George W. Bush White House Archives

- **Introduce** the special resource study
  - *Why is the National Park Service conducting this study?*
- **Explain** the study process and answer questions
  - *What are the criteria for evaluation?*
  - *What is the study timeline?*
- **Invite** you to share feedback
  - *How can I provide input?*

# What is a Special Resource Study?



*George H.W. and George W. Bush with the family dog on the steps of their home in Midland, TX, circa 1955 - George H. W. Bush Presidential Library and Museum*

## Special Resource Studies

- Provide Congress with critical information about the resource qualities in a study area and their eligibility to be designated as a unit of the national park system or other special designation
- Evaluate the area based on established Special Resource Study criteria; and
- Are prepared for the Secretary of the Interior, who will submit the study, along with any recommendations, to Congress for consideration.

**This study itself does not establish new national park units.**

- Only **Congress** through legislated action or the **President** through the use of the Antiquities Act has the authority to establish a new unit of the national park system.





*George W. Bush on a trip with his dad to the oil fields, Midland, TX, circa 1955*



*Barbara, George W., and Jeb Bush at 1412 West Ohio, Midland, TX, Spring 1954 - George H. W. Bush Presidential Library and Museum*



# Study Background

---

- In **2012**, U.S. Congressional Representative K. Michael Conaway (TX-11) requested that the National Park Service conduct a **reconnaissance survey of the George W. Bush Childhood Home**, located at 1412 West Ohio Avenue in Midland, Texas to provide a preliminary evaluation of the property as a potential new unit of the National Park System due to its association with President George W. Bush.
- The reconnaissance survey was completed in 2015 and found that **further analysis through a Congressionally authorized special resource study was warranted.**
- In **March 2019**, Congress passed **Public Law 116-9**, which directed the Secretary of the Interior to **conduct a special resource study of the George W. Bush Childhood Home in Midland, Texas.**
- The Department of the Interior charged the National Park Service (NPS) with the preparation of this special resource study.



*George W. Bush holding  
his brother Jeb, Spring  
1954*



*George W. Bush in his  
Cub Scout uniform,  
Spring 1954 -  
George H. W. Bush  
Presidential Library and  
Museum*

# Study Background

## The Bush Family in Midland, Texas

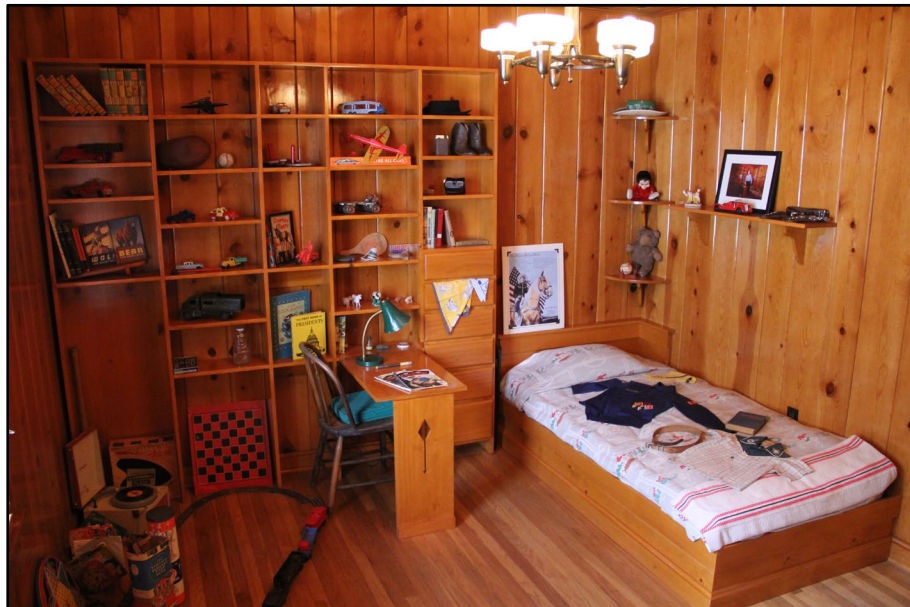
---

- **1950:** George Herbert Walker (H.W.) and Barbara Bush with children George W. (b. 1946) and Robin (b. 1949) moved from California to Midland, TX
- **1951:** Bush family moved to **1412 West Ohio Avenue**
- **1953:** John Ellis “Jeb” Bush born in February • Robin diagnosed with advanced-stage leukemia in March • Robin lost battle with leukemia in October
- **1955:** Neil Mallon Bush born in January • Bush family left 1412 West Ohio Avenue and into another Midland neighborhood in December
- **1959:** Bush family relocated to Houston, TX, when George W. Bush was 13 years old





1412 W. Ohio Avenue, February 2004 - Texas Historical Commission



George's Bedroom, restored to 1955 appearance - George W. Bush Childhood Home, Inc.

# Study Area

1412 West Ohio Avenue  
Midland , Texas

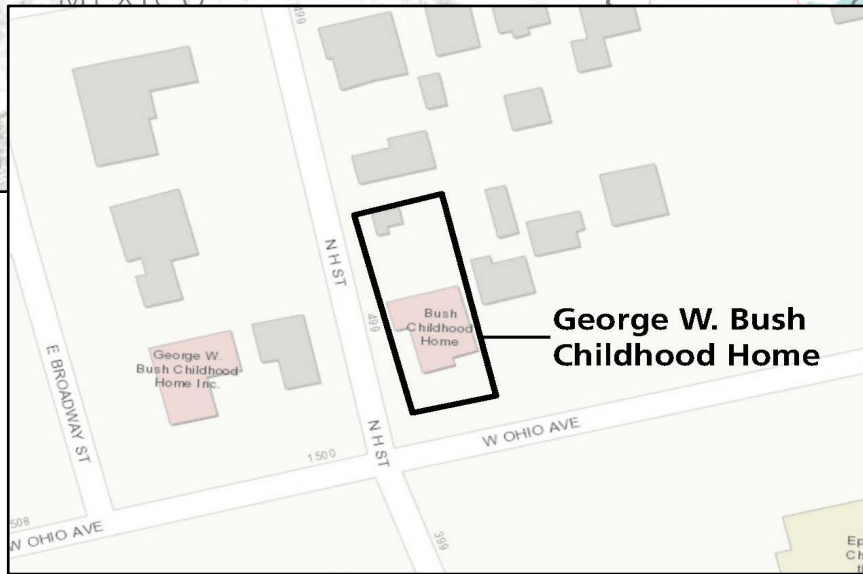


- 1939: house built
- 1951-1955: George W. Bush's childhood home, ages 5-9
- Until 2001: in private ownership
- 2001 - 2006: house restored to 1955 appearance
- 2006: opened to the public as a museum
- Listed in National Register of Historic Places and a Texas Historic Landmark
- Currently owned and managed by the nonprofit George W. Bush Childhood Home, Inc., which provides tours, exhibits, and educational programs for the public



# Study Area

1412 West Ohio Avenue  
Midland, Texas



*The George W. Bush Childhood Home*





# Study Criteria

Congressional legislation and NPS policy require using the following criteria to evaluate the study site. A study site or area must meet all four criteria:

- Must contain **nationally significant resources**;
- Must be **suitable**;
- Must be **feasible** as a potential unit of the NPS system; and
- Must require **direct management by the NPS**



*George W. and Jeb Bush play in the snow, February 1955 -  
George H. W. Bush Presidential Library and Museum*



# Criterion 1 - National Significance

---



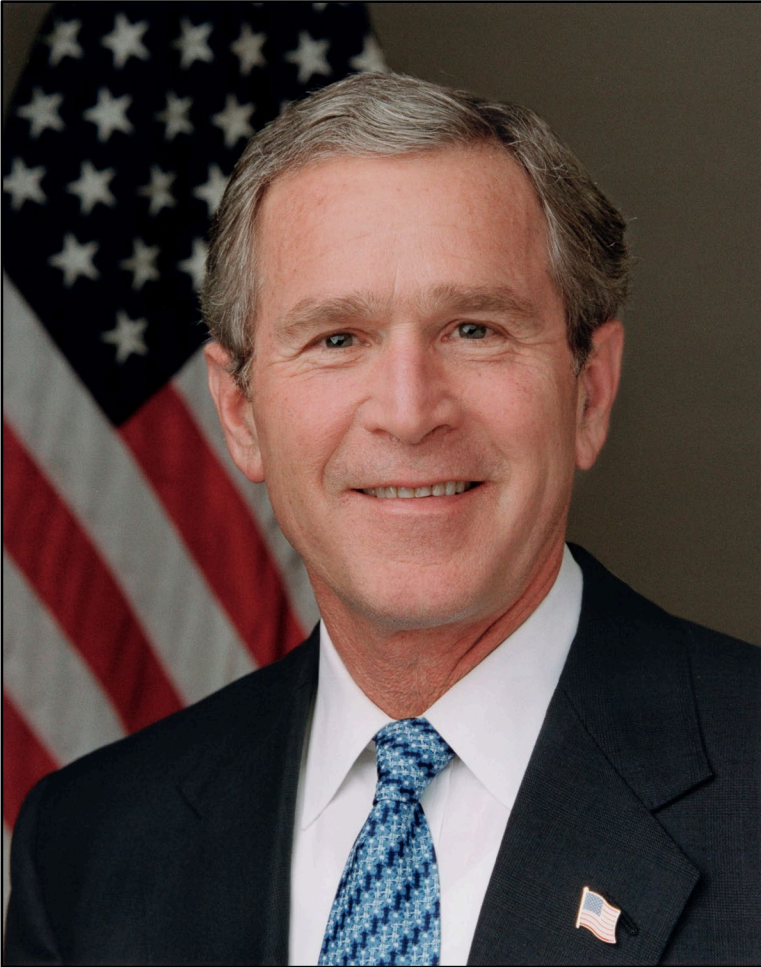
- Contains **nationally significant natural and/or cultural resources**
- For cultural resources, **National Historic Landmark criteria** are applied to determine whether a site is nationally significant

*Adams National Historical Park, Massachusetts*



## Criterion 2 - Suitability

---



*President George W. Bush  
Library of Congress*

- Represents a natural or cultural resource that is **not already adequately represented** in the national park system

*or*

- Is **not comparably represented and protected** for public enjoyment by another land-managing entity



## Criterion 3 - Feasibility

---



*Lyndon B. Johnson National Historical Park, Texas*

- **Sufficient size and appropriate configuration** to ensure long-term protection of the resource and visitor enjoyment
- Capable of **efficient administration** by the National Park Service at a **reasonable cost**

Other important **feasibility factors** include:

- Landownership
- Acquisition costs
- Life cycle maintenance costs
- Access
- Threats to the resource
- Staff or development requirements





# Criterion 4 – Need for NPS Management

---

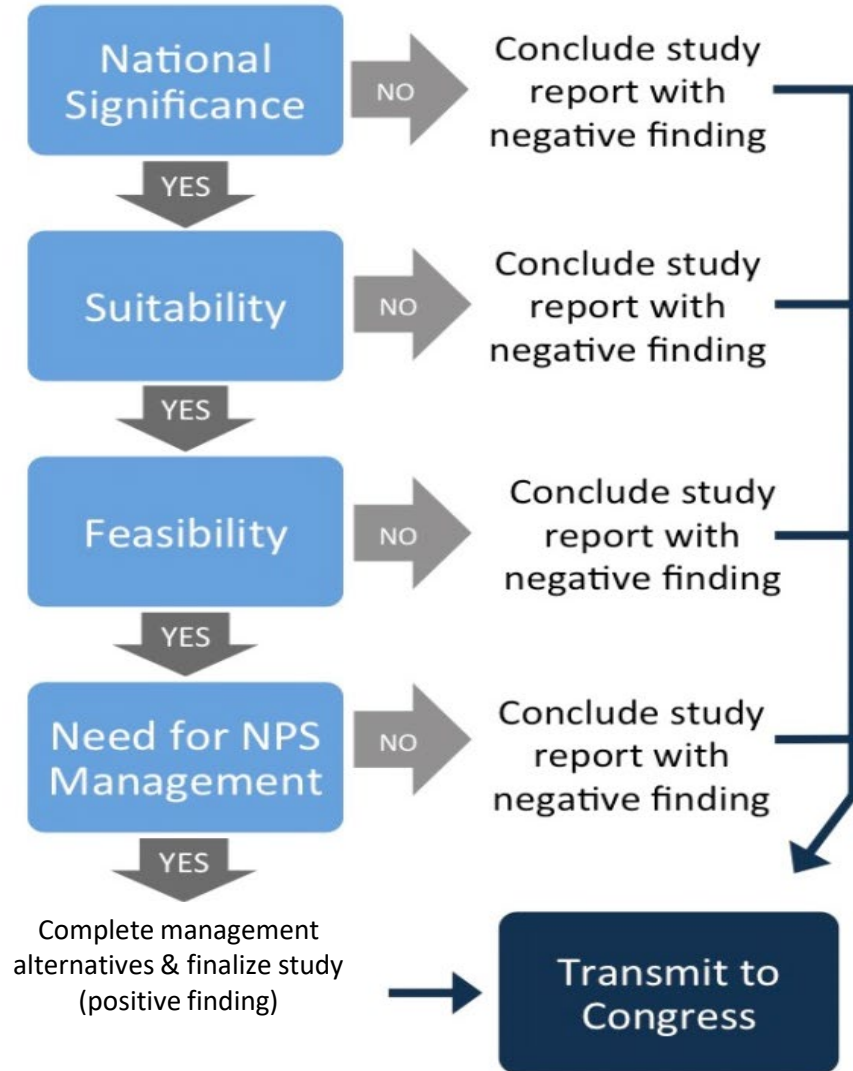
**Requires direct National Park Service  
management** that is clearly superior to other  
management approaches



*An educational program at The George W. Bush Childhood Home museum*



# SRS Completion Pathways



## Study Process

- Linear process
- A negative finding for ANY criterion ends the study.
- Findings and recommendations, if any, will be submitted to Congress
- Only **Congress** or the **President** has the authority to designate a new unit of the National Park System



# Estimated Study Timeline

---

Projected Time Frame	Task
Spring 2020 – Spring 2021	Data Gathering
January - February 2021	Public Outreach
Through end of 2021	Analysis of the four (4) study criteria and preparation of the study
Spring 2022	NPS Agency Review of Study Findings
Summer 2022	Revise Study Based on NPS Agency Review
Late 2022	Finalize Study Findings and Submit Report to Secretary of the Interior for transmittal to Congress



# We Want Your Feedback

---

1. What is important or unique about the George W. Bush Childhood Home as it relates to the life of George W. Bush?
2. What is your vision for the George W. Bush Childhood Home? How would you like to see the site managed? What types of activities and experiences do you want to see as part of the site's future?
3. Do you have any ideas or concerns that the National Park Service should be aware of and/or address in the study process?
4. Do you have any other ideas or comments you would like to share with us?





# Ways to Submit Feedback



*George and Barbara Bush with their children, George and Robin, at the rodeo grounds in Midland, TX, October 1950  
– George H. W. Bush Presidential Library and Museum*

## 1 - Enter your comments directly on the project website:

[parkplanning.nps.gov/GWBush](https://parkplanning.nps.gov/GWBush)

- Click the “Open for Comment” link to respond.

## 2 – Send written comments to:

- Email Carrie Miller (project manager) at [carrie\\_miller@nps.gov](mailto:carrie_miller@nps.gov), or

- Mail a letter to:

National Park Service, Denver Service Center – Planning Division  
c/o Carrie Miller

12795 West Alameda Parkway


P.O. Box 25287

Denver, CO 80225-0287

Open comment period is December 28, 2020 - February 28, 2021 <sup>25</sup>

Using the project website: [parkplanning.nps.gov/GWBush](https://parkplanning.nps.gov/GWBush)





## National Park Service

[Find a Park](#) [Discover History](#) [Explore Nature](#) [Get Involved](#) [Working With Communities](#) [Teachers](#) [Kids](#) [About Us](#)

PEPC Planning, Environment & Public Comment

[PEPC Home](#) [Documents by Park](#) [Policy/Links](#) [Park Planning](#) [Search Documents](#)

PROJECT LINKS

[Project Home](#)

[Plan Process](#)

[Meeting Notices](#)

[Links](#)

[Document List](#)


[Open For Comment \(1\)](#)

A comment period for this project closes **Feb 28, 2021**:  
**53** Days, **15** Hours, **45** Min.

### George W. Bush Childhood Home Special Resource Study

[Denver Service Center](#) » [George W. Bush Childhood Home Special Resource Study](#) » [Document List](#)

As directed by Congress in 2019, the National Park Service is preparing a special resource study of the George W. Bush Childhood Home located at 1412 West Ohio Avenue, Midland, Texas, to evaluate its potential for inclusion within the National Park System. The Bush family—which includes two Presidents, a First Lady, and two Governors—lived in the house from November 1951 to November 1955. The National Park Service will use this website to display public information throughout the course of this study. Meeting dates and locations will be posted here, along with project updates and information about how to submit comments online or via mail.



#### INTRODUCTION TO THE GEORGE W. BUSH CHILDHOOD HOME SPECIAL RESOURCE STUDY


The purpose of this special resource study is to gather information about the George W. Bush Childhood Home through research and public input, and then to report these findings to Congress. The special resource study will evaluate the potential for inclusion of the property in the national park system based upon whether it meets established criteria for national significance, suitability, feasibility, and the need for NPS management. Please use the "Links" tab on the left to find additional information on the criteria used to evaluate new national parklands.

26



Using the project website: [parkplanning.nps.gov/GWBush](https://parkplanning.nps.gov/GWBush)





## National Park Service

[Find a Park](#) [Discover History](#) [Explore Nature](#) [Get Involved](#) [Working With Communities](#) [Teachers](#) [Kids](#) [About Us](#)

PEPC Planning, Environment & Public Comment

[PEPC Home](#) [Documents by Park](#) [Policy/Links](#) [Park Planning](#) [Search Documents](#)

### PROJECT LINKS

- [Project Home](#)
- [Plan Process](#)
- [Meeting Notices](#)
- [Links](#)
- [Document List](#)
- [Open For Comment \(1\)](#)


A comment period for this project closes **Feb 28, 2021**:  
**53 Days, 15 Hours, 44 Min.**

## Documents Open For Review

Denver Service Center » George W. Bush Childhood Home Special Resource Study


The following Documents are currently open for review.

Select a document to review and comment:

-  [Newsletter for the George W. Bush Childhood Home Special Resource Study](#)

Using the project website: [parkplanning.nps.gov/GWBush](https://parkplanning.nps.gov/GWBush)





## National Park Service

[Find a Park](#)[Discover History](#)[Explore Nature](#)[Get Involved](#)[Working With Communities](#)[Teachers](#)[Kids](#)[About Us](#)

PEPC Planning, Environment & Public Comment

[PEPC Home](#)[Documents by Park](#)[Policy/Links](#)[Park Planning](#)[Search Documents](#)

### PROJECT LINKS

[Project Home](#)[Plan Process](#)[Meeting Notices](#)[Links](#)[Document List](#)[Open For Comment \(1\)](#)


[Comment Now »](#)

Comment period closes **Feb 28, 2021**  
at 11:59 PM Mountain Time in:  
53 Days, 15 Hours, 43 Min.

[Denver Service Center »](#)[George W. Bush Childhood Home Special Resource Study »](#)[Document List](#)  
[» Document Contents](#)

## Newsletter for the George W. Bush Childhood Home Special Resource Study

This newsletter describes the purpose of the George W. Bush Childhood Home Special Resource Study, the study process, and four questions for public feedback (also listed below). Click on the "Comment Now" button below to enter your feedback directly here.



[Comment Now »](#)


Comment period closes **Feb 28, 2021**  
at 11:59 PM Mountain Time in:  
**53 Days, 15 Hours, 43 Min.**

### Topic Questions:

1. What is important or unique about the George W. Bush Childhood Home as it relates to the life of George W. Bush?
2. What is your vision for the George W. Bush Childhood Home? How would you like to see the site managed? What types of activities and experiences do you want to see as part of the site's future?

# Using the project website

[parkplanning.nps.gov/GWBush](http://parkplanning.nps.gov/GWBush)



## National Park Service

[Find a Park](#) [Discover History](#) [Explore Nature](#) [Get Involved](#) [Working With Communities](#) [Teachers](#) [Kids](#) [About Us](#)

[PEPC Planning, Environment & Public Comment](#)

[PEPC Home](#) [Documents by Park](#) [Policy/Links](#) [Park Planning](#) [Search Documents](#)

### PROJECT LINKS

[Project Home](#)

[Plan Process](#)

[Meeting Notices](#)

[Links](#)

[Document List](#)

[Open For Comment \(1\)](#)

[Print Form](#)

Comment period closes  
Feb 28, 2021

at 11:59 PM Mountain Time in  
53 Days, 15 Hours, 42 Min.

## Submit Comments

Newsletter for the George W. Bush Childhood Home Special Resource Study

*We welcome your comments on this project.*

Before including your address, telephone number, electronic mail address, or other personally identifiable information in your comments, you should be aware that your entire comment (including your personally identifiable information) may be made publicly available at any time. While you can ask us to withhold your personally identifiable information from public review, we cannot guarantee that we will be able to do so.

**Comment Form**

**bold\* indicates required fields**

Country:

United States of America

City:

State/Territory:

Postal Code:

First Name:

Middle Initial:

Last Name:

Organization:

Address 1:

Address 2:

E-mail:

*Topic Questions - Please address these questions in addition to your comments.*

**Topic Questions:**

**Question 1:**  
What is important or unique about the George W. Bush Childhood Home as it relates to the life of George W. Bush?





**To learn more and follow the study process, visit the project website:**

**[parkplanning.nps.gov/GWBush](https://parkplanning.nps.gov/GWBush)**

***Thank you for your interest in this study!***

National Park Service  
U.S. Department of the Interior



# Instructions for this virtual meeting



Activity

Chat

Teams

Calls

Files

Calendar

...

Apps

Help

Search or type a command

Need help? Leave

View or hide Q&A

Live event Q&A

Featured My questions Most recent

No featured questions yet

Ask a question

# Instructions for this virtual meeting



Activity

Chat

Teams

Calls

Files

Calendar

...

Apps

Help

Search or type a command

Need help? Leave

Ask a question

Live event Q&A

Featured My questions Most recent

No featured questions yet

Ask a question



