

**PROPOSED CHANGES  
SUPERINTENDENT'S COMPENDIUM  
2021  
WRANGELL-ST. ELIAS NATIONAL PARK AND PRESERVE**

Wrangell-St. Elias National Park and Preserve is seeking comment on proposed changes to the Superintendent's Compendium. A compendium is a written compilation of designations, closures, permit requirements and other restrictions adopted under the Superintendent's discretionary authority.

Information on how to submit comments is available at:  
<https://www.nps.gov/locations/alaska/proposed-compendiums.htm>

After review and consideration of the need for annual updates, the following changes are proposed.

**Electric Bicycles**

Updates are proposed regarding the use of electric bicycles (e-bikes) to reflect recent regulatory changes. The entry under 36 CFR 13.50 will be replaced with the following:

**4.30(i)(1) Designated roads, parking areas, and trails open to electric bicycles, or specific classes of electric bicycles**

- All roads, parking areas and trails outside of designated wilderness are open to the use of electric bicycles.

**4.30(i)(7) Electric bicycle use restrictions/conditions**

No additional restrictions or conditions in areas designated as open to electric bicycle use. See 36 CFR 4.30(i) for more information.

**Jumbo Creek Campground Designation**

A compendium change is proposed to include designation of the Jumbo Creek Campground in the Kennecott Mines National Historic Landmark and to add a seasonal restriction on discharging a firearm in the newly established campground. Any subsistence activity that does not require the discharge of a firearm within this limited area would not be affected by this proposed restriction.

The reasons for designating the Jumbo Creek Campground are as follows:

- The area proposed for designation as the Jumbo Creek Campground receives high visitor use as an informal camping area due to a combination of several factors. These factors include site characteristics that are inherently favorable for camping, previous installations of outhouse facilities and bear-resistant food-storage lockers that indirectly encourage nearby camping, and advertisement as a camping area in publications and maps produced by the National Park Service (NPS) and others. Over the years, high

levels of use have resulted in the proliferation of hardened campsites, social trails, fire rings, and human waste, with unintended resource impacts.

- Formal designation of this area as a campground is the first step towards managing visitor use in a manner that ensures protection of park resources and values and enhances visitor experiences through establishment of terms and conditions for use of the area. Formal designation as a campground also will facilitate acquisition and expenditure of NPS funding to manage the area for the long-term benefit of park resources, values, and visitors.

Proposed language:

### **13.25(c) Designated campgrounds: restrictions, terms, and conditions**

The Kendesnii Campground and the Jumbo Creek Campground are the only designated campgrounds in the park/preserve.

Discharging a firearm is prohibited May 1 through September 30 in the Kendesnii Campground and in the Jumbo Creek Campground unless required for defense of life and property.

As used in this section, Jumbo Creek Campground in the Kennecott Mines National Historic Landmark is defined as the designated land bounded on the south by Jumbo Creek, on the west by Kennicott Glacier, on the north by Amazon Creek/Gulch, and on the east by the 2150' elevation contour. The total acreage for Jumbo Creek Campground is approximately 50 acres. Campground access is from the Root Glacier Trail where it crosses Jumbo Creek at 61 deg 30 min 11.378 sec N latitude, 142 deg 53 min 49.978 sec W longitude. This area is located within the preserve. A map depicting the boundaries of Jumbo Creek Campground is attached.

The reasons for the restriction on discharging of firearms in the Jumbo Creek Campground are as follows:

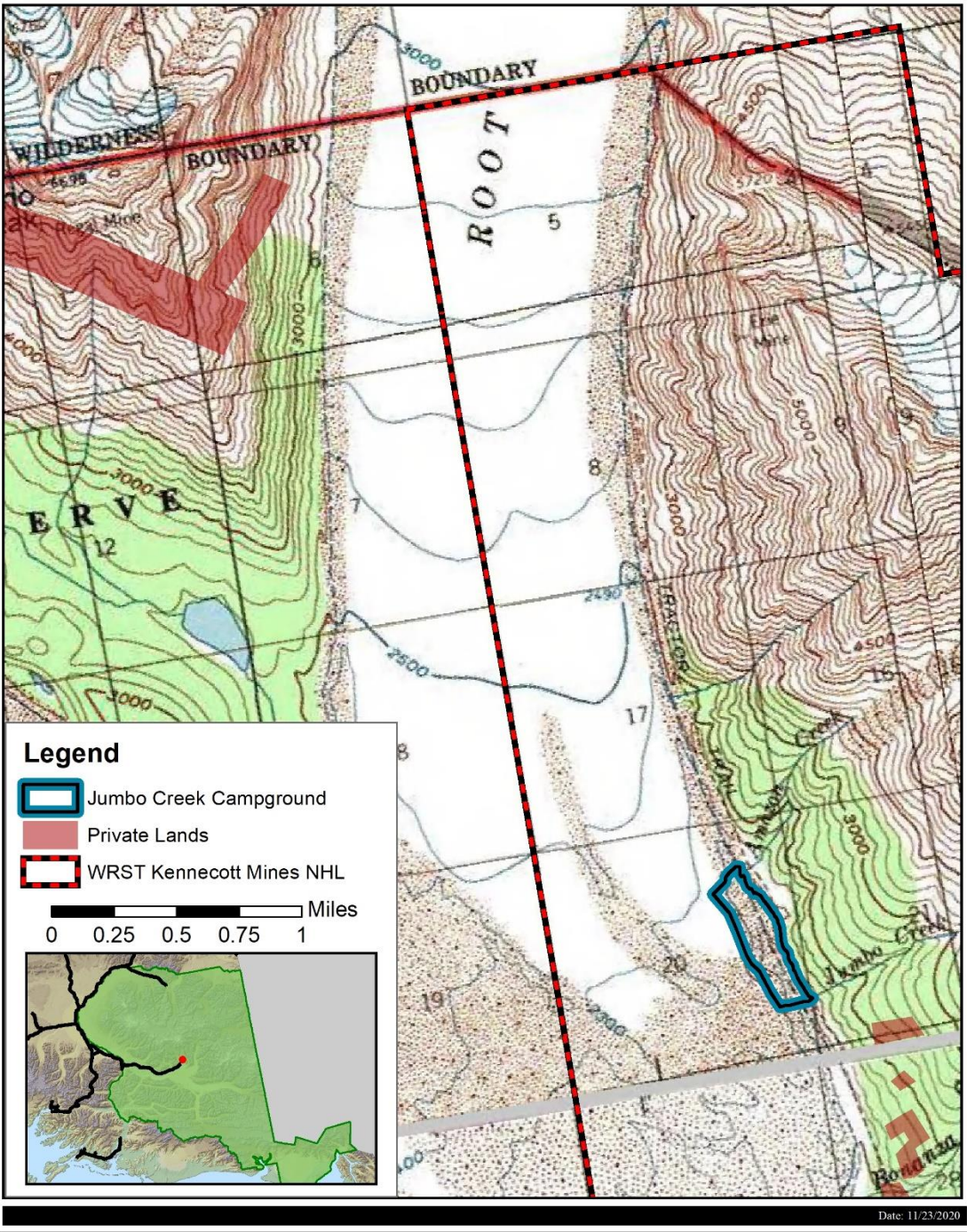
- The area proposed for designation as the Jumbo Creek Campground receives high levels of visitor use and will continue to do so following formal designation as a campground.
- Visitation will continue to be greatest during the period of May through September when conditions are favorable for many types of popular outdoor recreational activities.
- Because of continued high use of the campground during this period of time, discharging firearms poses a serious public safety concern.
- This restriction is consistent with regulations for Kendesnii Campground.

The reason less restrictive measures will not be effective is as follows:

- Lack of a firearms discharge restriction between May 1<sup>st</sup> and September 30<sup>th</sup> would subject the public in this campground to increased safety risks. The proposed language represents the least restrictive measure in that the restrictions will only be in place during the period of highest visitor use in the campground. Prohibiting the discharge of firearms will protect visitor experience and provide for public safety in a designated campground.

# Jumbo Creek Campground Compendium Map

Alaska Region  
Wrangell-St. Elias National Park & Preserve  
U.S. Department of the Interior



### **Jack Lake Airstrip Administrative Site**

The NPS is proposing a seasonal restriction between April 1<sup>st</sup> and November 1<sup>st</sup> on public use in the immediate vicinity of NPS Jack Lake Airstrip. This change would add the Jack Lake Airstrip Administrative Site to the current list of facilities designated for administrative use only.

Proposed language:

### **13.50 Closure and restrictions**

#### Administrative Use Only Facilities

The Commissioner's Cabin and Women's Jail Cabin at Chisana, the Operations Center and Cook Cabin at May Creek, the Freed Property research camp in Slana and, between April 1<sup>st</sup> and November 1<sup>st</sup>, the NPS employee housing areas in Copper Center, Slana, McCarthy and Kennecott and the Jack Lake Airstrip Administrative Site are restricted to administrative use, and are not available to the general public. This public use restriction applies to the land immediately surrounding the employee housing areas, including any closely associated buildings, structures and parking areas, but excluding areas beyond. Restricted areas will be posted with signs as "Private" or "Administrative Use Only." See also 13.1906 for the Headquarters/Visitor Center Developed Area.

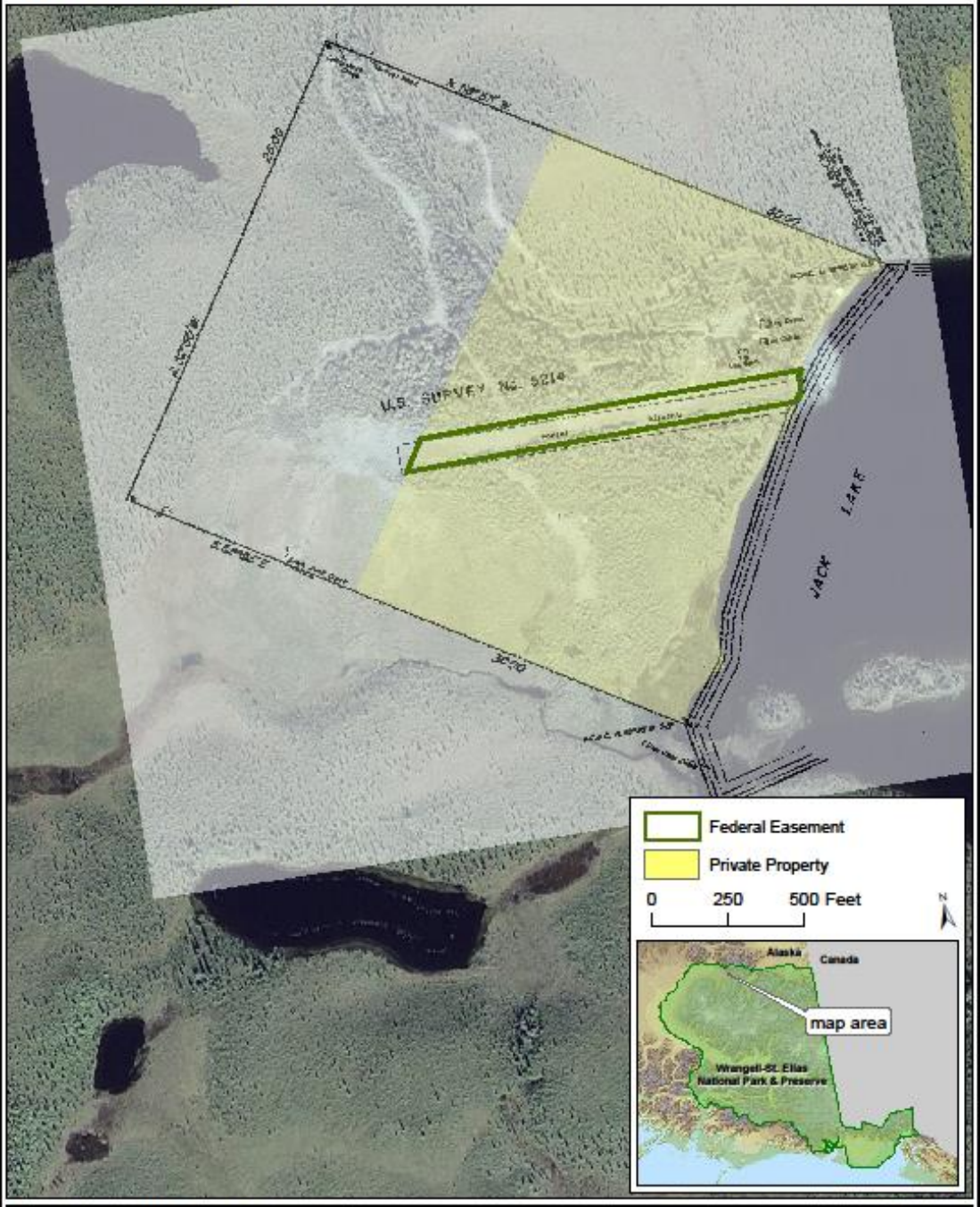
The Jack Lake Airstrip Administrative Site is described as:

A portion of U.S. Survey No. 5214, according to the official plat thereof, located in the Chitina Recording District, Third Judicial District, State of Alaska, and more particularly described as follows: Beginning at corner 2 USS 5214, the True Point of Beginning; thence, S 32 degrees 50' W a distance of 1650.00 feet to corner 3; thence, S 58 degrees 55' E a distance of 805.38 feet to a corner; thence, N 32 degrees 50' E a distance 1650.00 feet to a corner; thence, N 58 degrees 55' W a distance of 805.38 feet to corner 2, the True Point of Beginning. Commonly referred to as Jack Lake Airstrip. See attached Map of USS5214.

# USS 5214

Wrangell-St. Elias National Park and Preserve

Alaska Region  
National Park Service  
U.S. Department of the Interior



Background Image: USS 5214 & 2005 IKONOS Imagery

Date: 7/31/2020

The reasons for this restriction are as follows:

- The NPS acquired the parcel described above, to support NPS administrative aviation only. The parcel does not have access to Jack Lake. As part of the acquisition, the NPS obtained an easement to use an airstrip that largely exists on private land. The acquired easement is 100' wide and approximately 1,300' long and terminates at the ordinary high-water line on Jack Lake. The NPS is subject to the conditions of the easement which state:

*"The easement does not include the right for use of the airstrip by the general public or the right for use of the airstrip for private commercial operations..."*

- Currently there is no public road access to Jack Lake. The private landowners and the NPS use an unimproved road to access the parcels. This road terminates on private property. The NPS created a road spur to access the property acquired in 2016.
- There is an assumption in the local community that this road is intended for public access to Jack Lake. This assumption is incorrect and efforts to educate (signage, community outreach) have been unsuccessful. The NPS will conduct seasonal aviation operations and feel it prudent to limit public access to critical aviation components, such as fuel and aircraft. Designating this tract as a seasonal administrative site with a public use closure will safeguard NPS assets, help prevent trespass on adjacent private land, and will not limit the private landowners' use of their lands. This public use closure does not affect legal public access to Jack Lake.

The reasons a less restrictive method will not be effective are as follows:

- Without a legal restriction on public use of this administrative site, the NPS cannot enforce the closure. Appropriate signage along with the ability to legally restrict public use near the administrative area is necessary to meet the intent of this restriction.
- Signage alone by the landowner has not been effective at preventing trespass in the past.

---

Superintendent