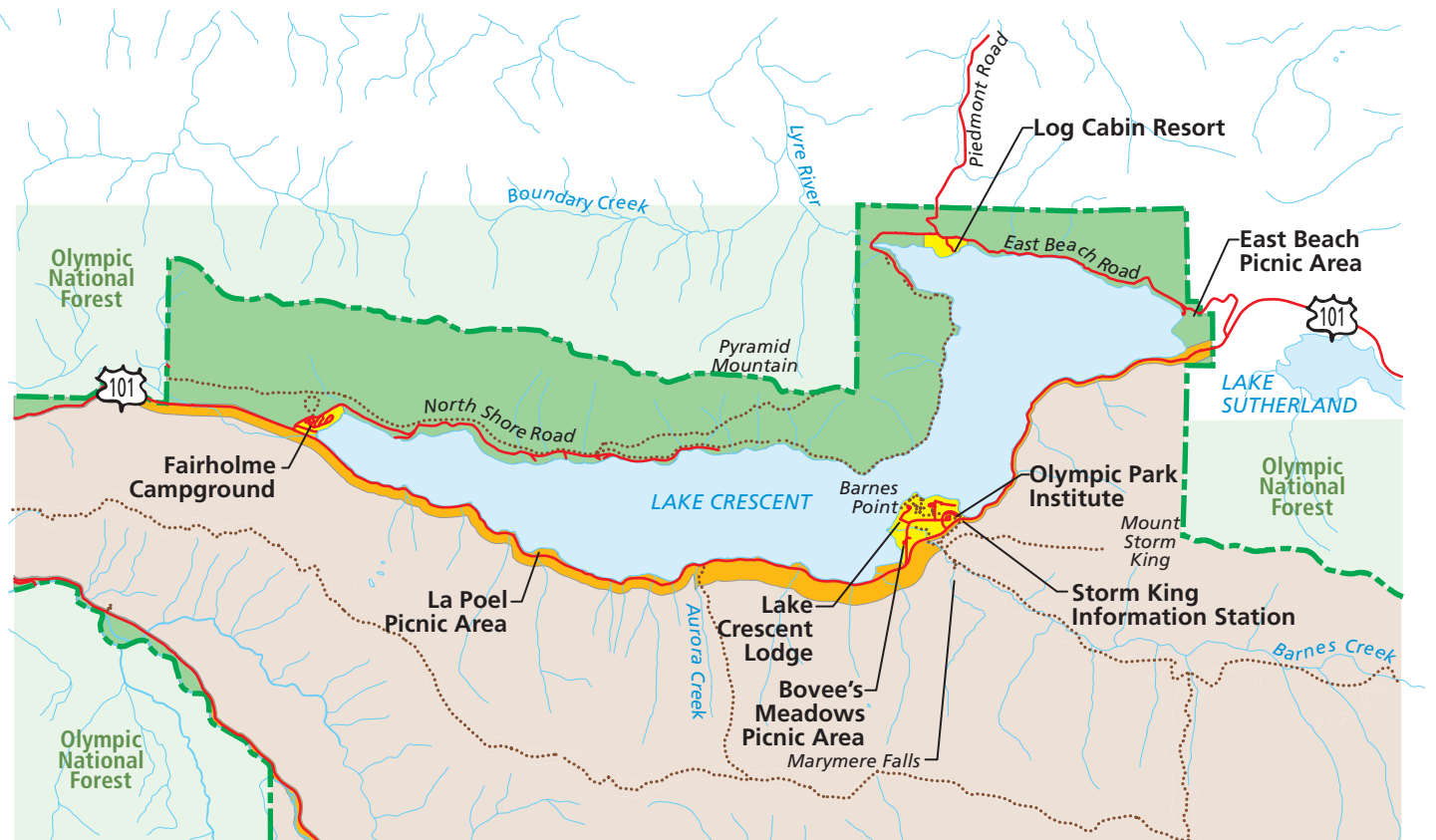


# Lake Crescent Alternative A - Current Management

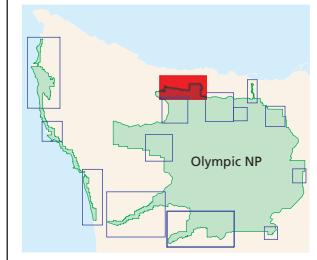


## Legend

|                  |              |
|------------------|--------------|
| Low Use Zone     | NPS Boundary |
| Day Use Zone     | Trail        |
| Development Zone | Paved road   |
| NPS Wilderness   | Unpaved road |
|                  | USFS         |

Private lands are are not shown on map

## Location



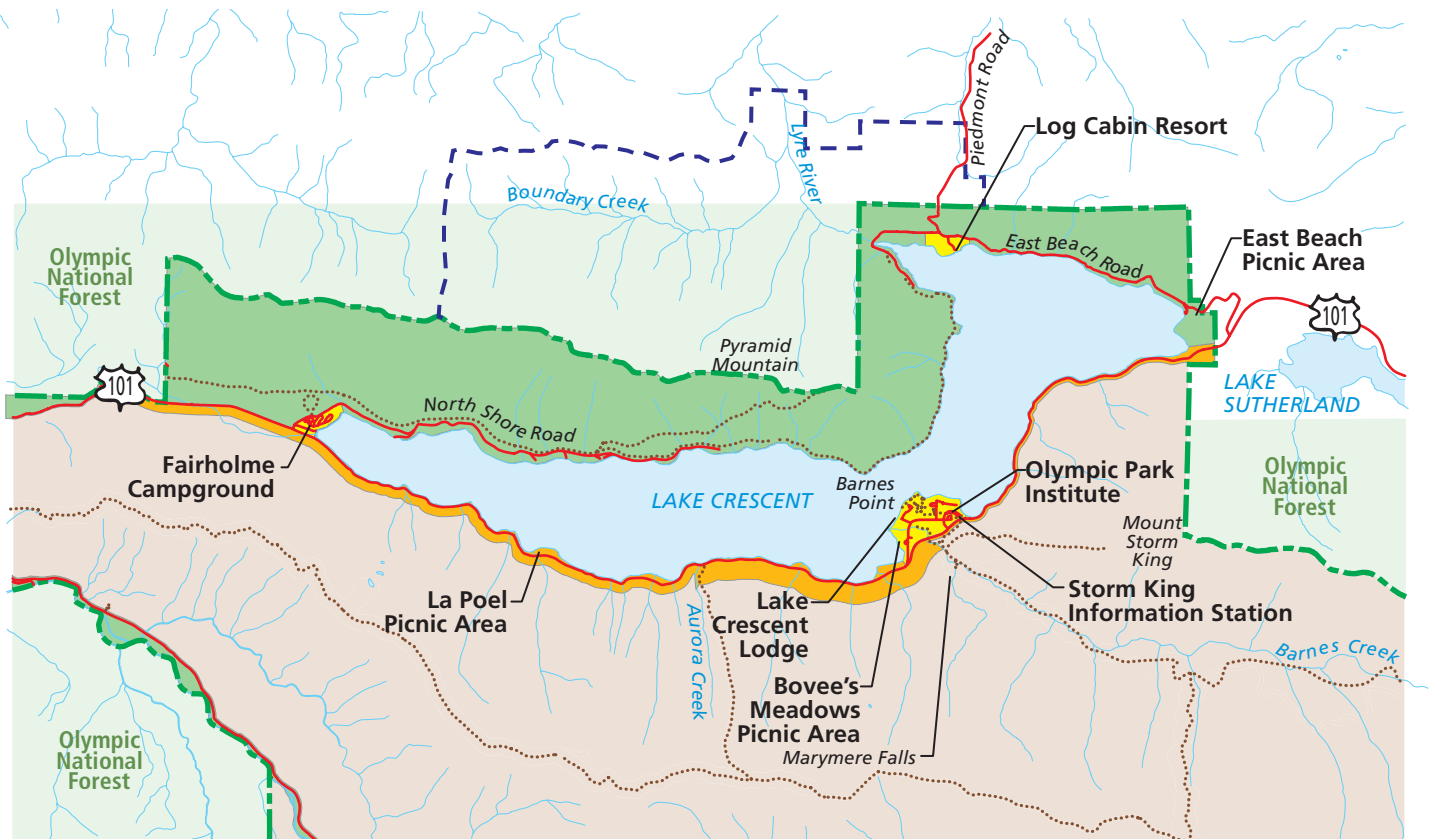
0 1 2 miles

DSC • September 07 • 149 • 20905

1. Seasonal lodging would be provided.
2. Facilities would be retained at Barnes Point, Log Cabin, and Fairholme.
3. No additional wilderness study would be conducted.
4. Private property would remain except for opportunity purchases in accordance with NPS policy, under an updated and

- approved Olympic National Park land protection plan. This plan would address resource protection, shoreline use, visitor use, and operational needs within a priority context.
5. No boundary adjustments would be made under this alternative.
  6. The existing frontcountry trail system would be retained and improved.

# Lake Crescent Alternative B - Resource Protection Emphasis

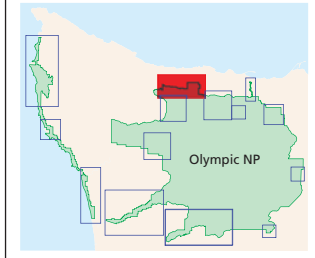


## Legend

|                                  |              |
|----------------------------------|--------------|
| Low Use Zone                     | NPS Boundary |
| Day Use Zone                     | Trail        |
| Development Zone                 | Paved road   |
| NPS Wilderness                   | Unpaved road |
| Proposed NPS Boundary Adjustment | USFS         |

Private lands are not shown on map

## Location

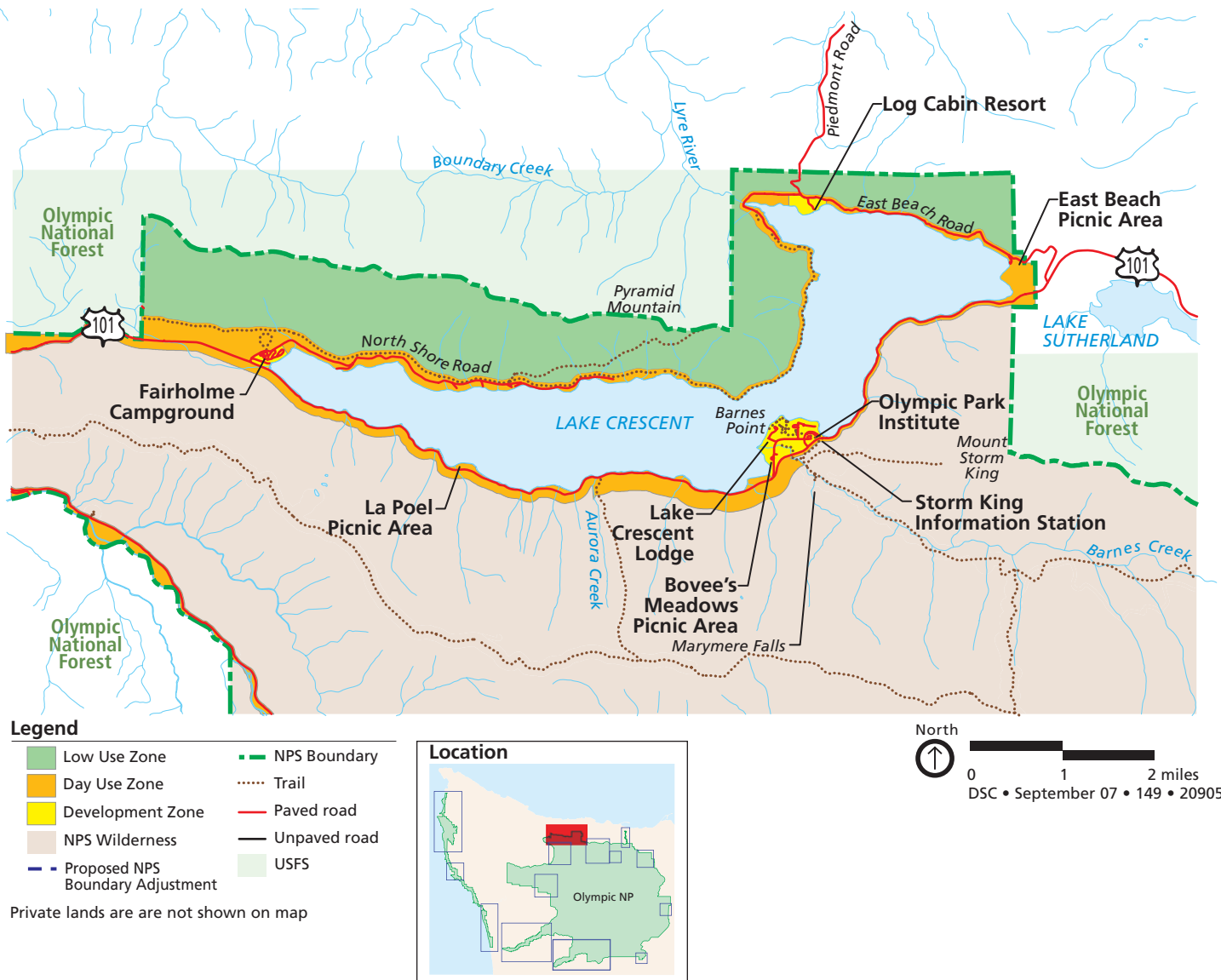


0 1 2 miles

DSC • September 07 • 149 • 20905

1. Seasonal lodging would be provided.
  2. Facilities at Barnes Point and Log Cabin would be retained. Commercial facilities would be eliminated at Fairholme.
  3. A wilderness eligibility assessment followed by a wilderness study, as appropriate would be conducted for the area north of the Spruce Railroad trail.
  4. Private property would remain except for opportunity purchases in accordance with NPS policy, under an updated and approved Olympic National Park land protection plan. This plan would address resource protection, shoreline use, visitor use, and operational needs within a priority context.
  5. The park boundary would be adjusted through willing seller acquisitions and/or land exchanges
  6. The existing frontcountry trail system would be retained and could be improved.
- to include a larger portion of the watershed of the Lyre River, including Boundary Creek, to protect the Beardslee trout and Crescenti trout spawning area and watershed.

# Lake Crescent Alternative C - Visitor Opportunities Emphasis



1. A longer lodging season would be encouraged.

2. Facilities at Barnes Point might be expanded; facilities at Log Cabin and Fairholme would be retained.

3. No wilderness study would be conducted.

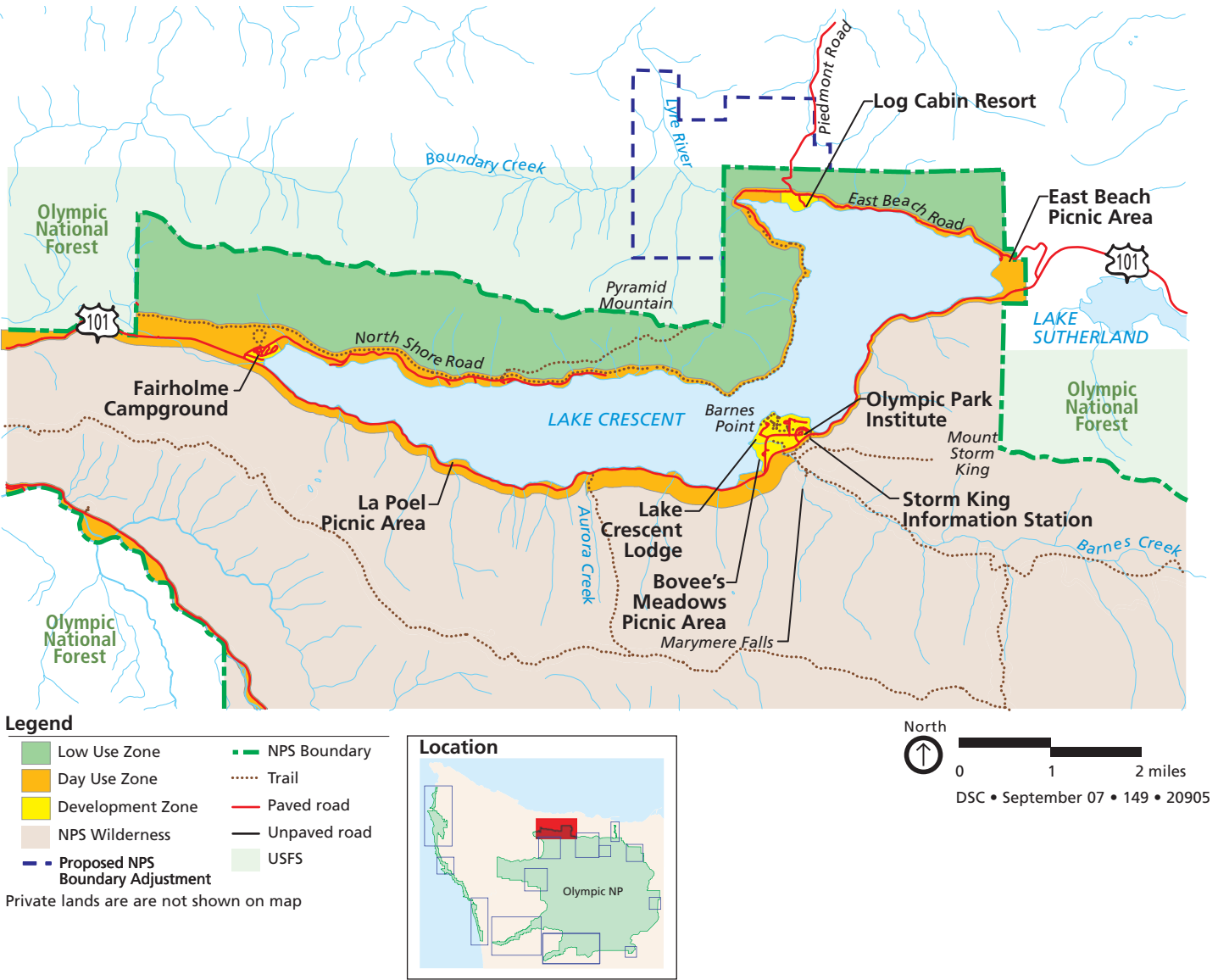
4. Private property would remain except for opportunity purchases in accordance with NPS policy, under an updated and

approved Olympic National Park land protection plan. This plan would address resource protection, shoreline use, visitor use, and operational needs within a priority context.

5. No boundary adjustments would be made under this alternative.

6. The existing frontcountry trail system would be retained and could be improved.

# Lake Crescent Alternative D - Preferred Alternative



1. A longer lodging season would be encouraged.

2. Facilities would be retained at Barnes Point, Log Cabin, and Fairholme. Some improvements or modifications may be undertaken to enhance shoreline protection.

3. A wilderness eligibility assessment followed by a wilderness study, as appropriate, would be conducted for the area north of the Spruce Railroad trail.

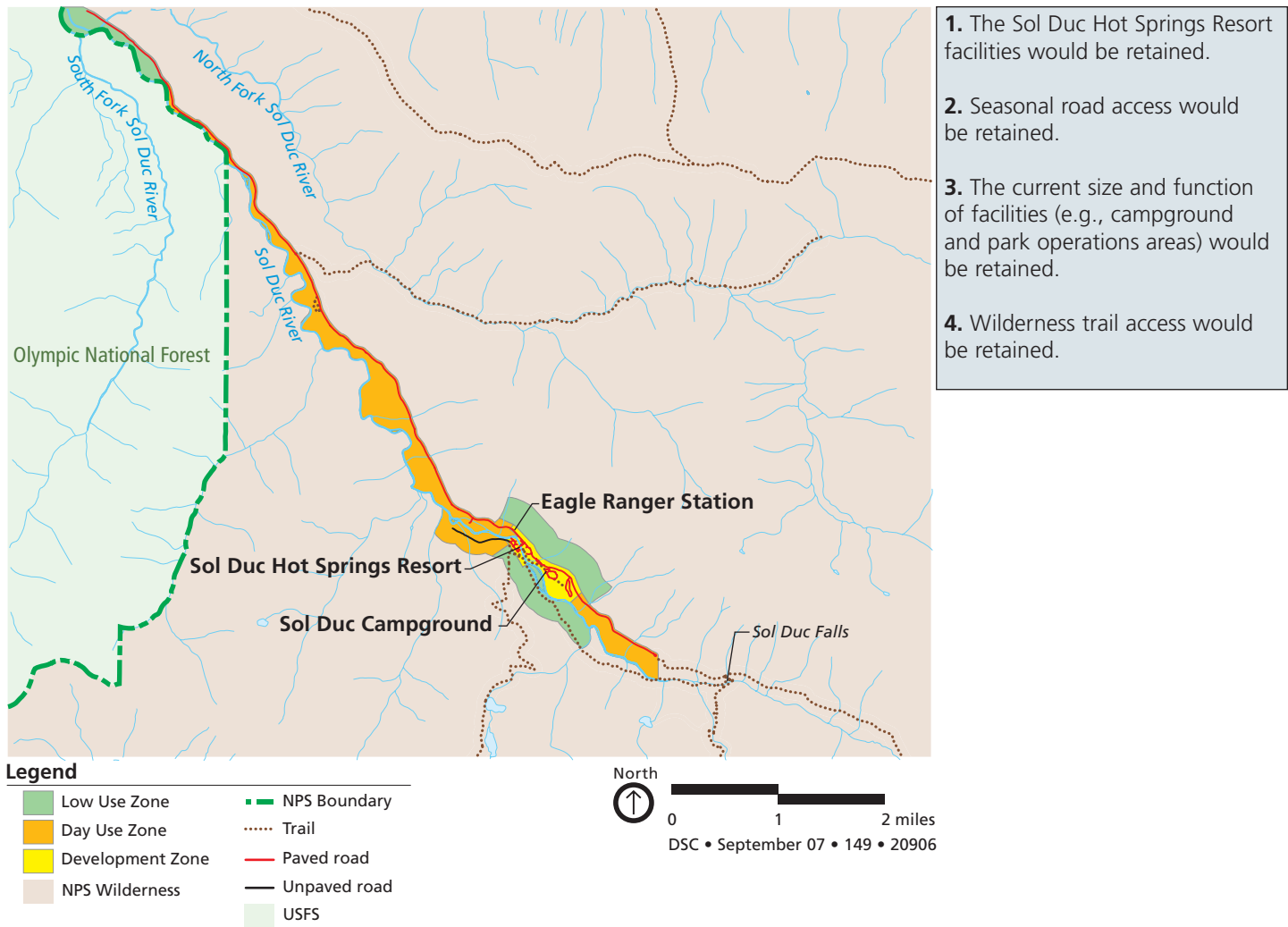
4. Private property would remain except for opportunity purchases in accordance with NPS policy, under an updated and approved Olympic

National Park land protection plan. This plan would address resource protection, shoreline use, visitor use, and operational needs within a priority context.

5. The park boundary would be adjusted through willing seller acquisitions and/or land exchanges to incorporate areas near the lake outlet at the head of the Lyre River to protect the Beardslee and Crescenti trout spawning areas.

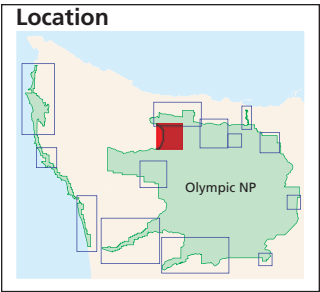
6. The existing frontcountry trail system would be retained and could be improved. A universally accessible frontcountry trail would be developed and maintained.

# Sol Duc Alternative A - Current Management

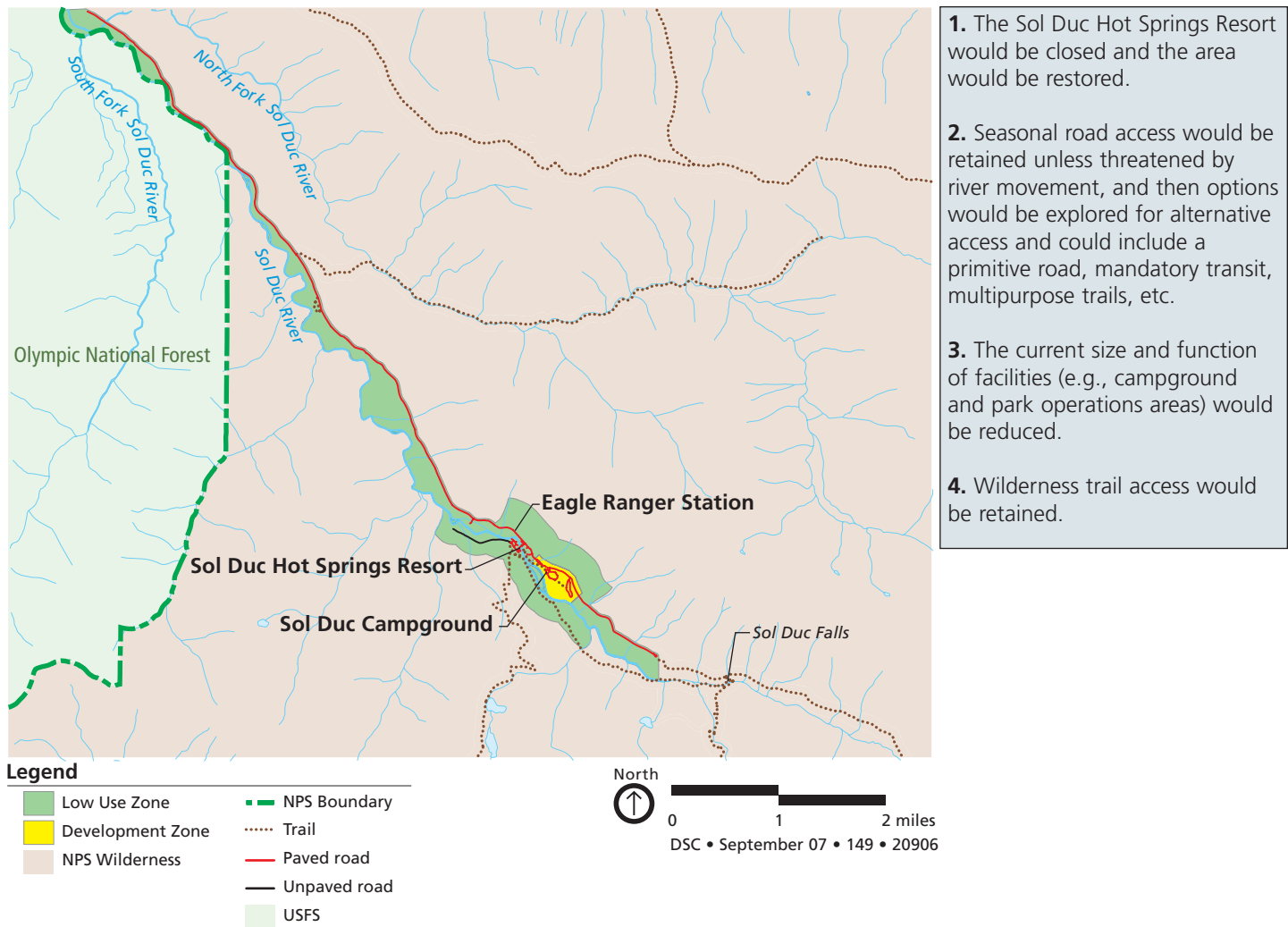


1. The Sol Duc Hot Springs Resort facilities would be retained.
2. Seasonal road access would be retained.
3. The current size and function of facilities (e.g., campground and park operations areas) would be retained.
4. Wilderness trail access would be retained.

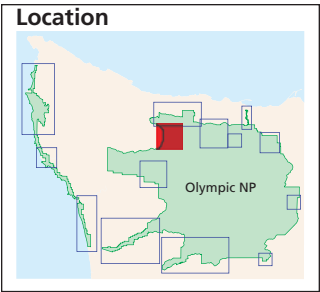
Private lands are are not shown on map



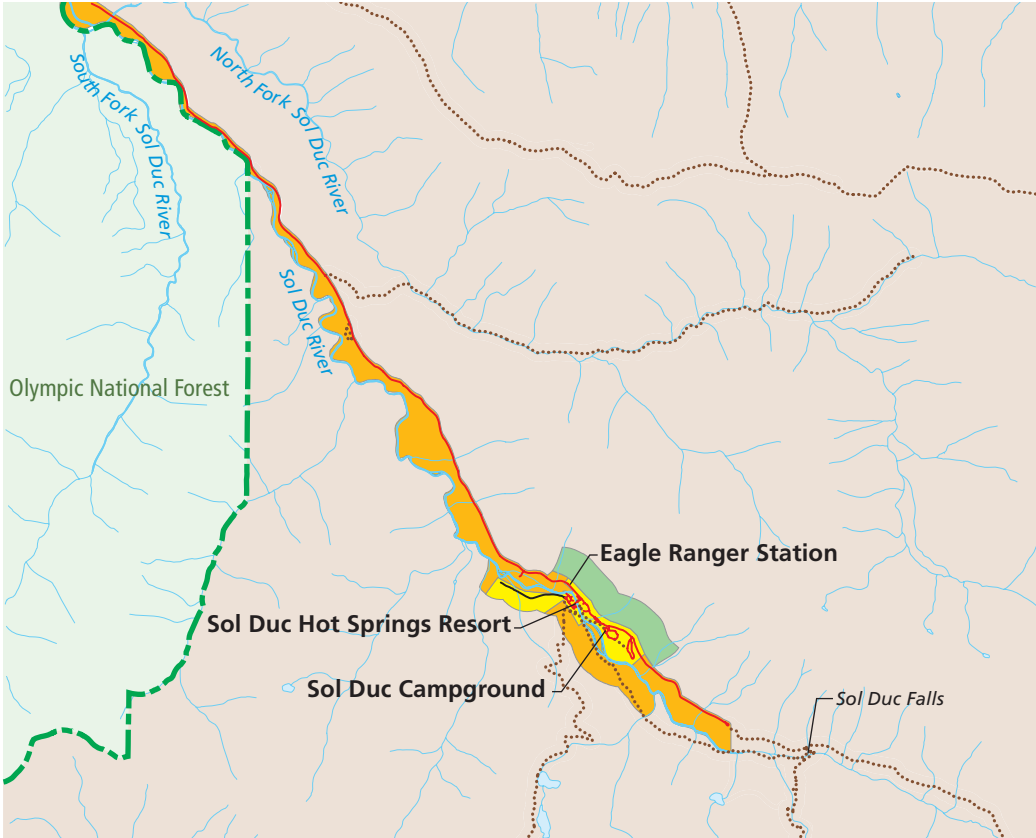
# Sol Duc Alternative B - Resource Protection Emphasis



Private lands are are not shown on map

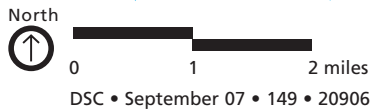


# Sol Duc Alternative C - Visitor Opportunities Emphasis



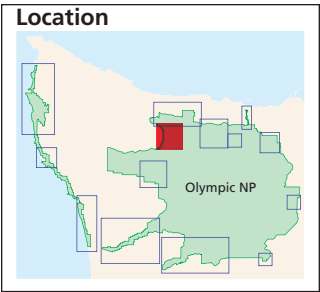
## Legend

|                  |              |
|------------------|--------------|
| Low Use Zone     | NPS Boundary |
| Day Use Zone     | Trail        |
| Development Zone | Paved road   |
| NPS Wilderness   | Unpaved road |
|                  | USFS         |



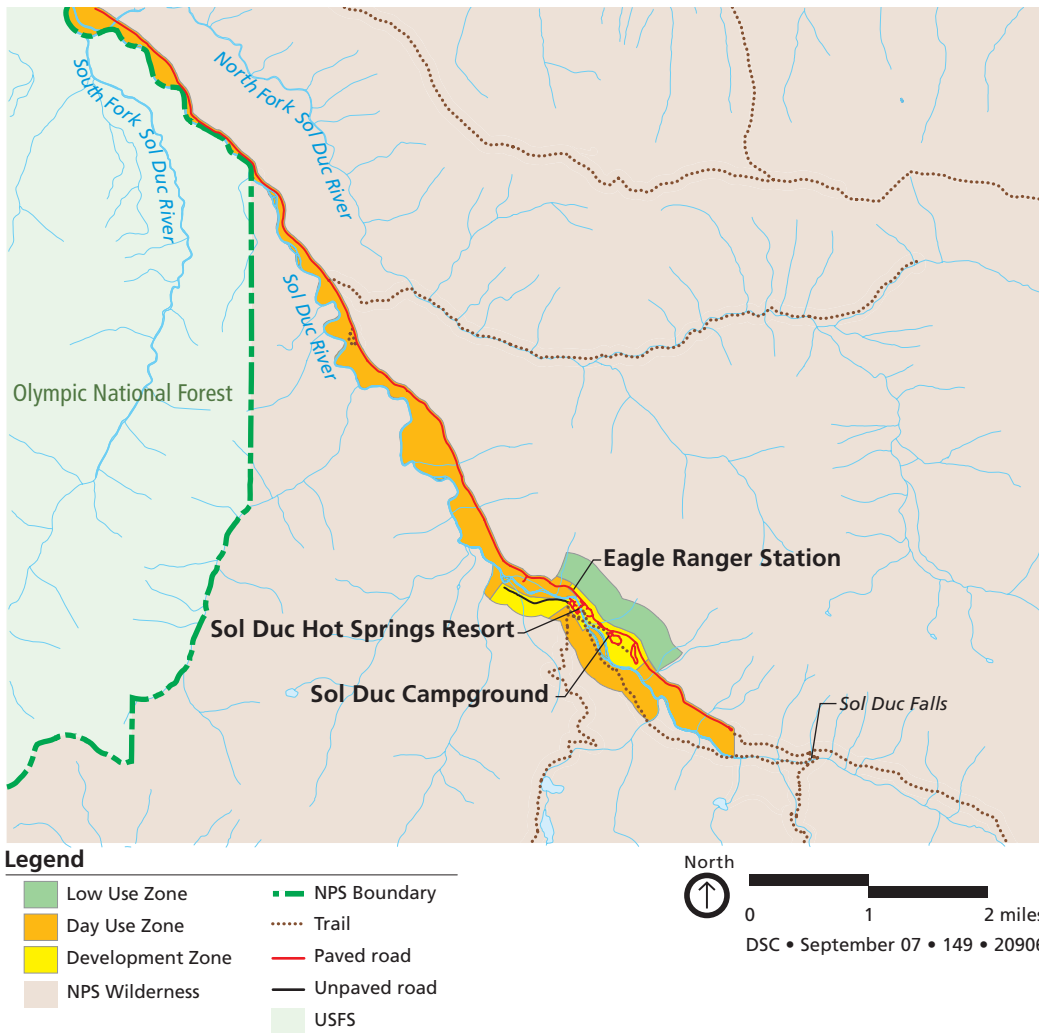
Private lands are are not shown on map

1. The Sol Duc Hot Springs Resort facilities would be expanded and improved, and the resort season would be extended to year-round operation if economically feasible.
2. Year-round road access would be provided and improved. An optional seasonal transit system would be studied, and implemented if feasible.
3. The current size and function of facilities (e.g., campground and park operations areas) would be redesigned, enlarged, and improved.
4. Wilderness trail access would be retained and the frontcountry trail network would be improved. An existing frontcountry trail would be converted to be universally accessible.

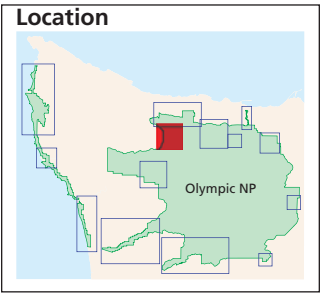




# Sol Duc Alternative D - Preferred Alternative



Private lands are are not shown on map



1. Existing Sol Duc Hot Springs Resort facilities would be retained seasonally but the season could be adjusted depending on economic feasibility, weather and monitoring/protection of the geothermal resource and adjacent natural resources (e.g. discharge into river).
2. Seasonal road access would be retained, but access season could be adjusted depending on weather. Road access would be retained using methods that minimize adverse effects on river processes and aquatic and riparian habitats, to the extent possible
- An optional, seasonal transit system would be studied, and implemented if feasible.
3. The current size and function of facilities (e.g., campground and park operations areas) may be relocated, and/or expanded slightly.
4. Wilderness trail access would be retained, and an existing frontcountry trail would be converted to be universally accessible.