

George W. Bush Childhood Home Special Resource Study

November 2020

National Park Service
U.S. Department of the Interior



Credit: Stephen Saks Photography / Alamy Stock Photo

The National Park Service (NPS) is pleased to announce the launch of a special resource study of the George W. Bush Childhood Home located at 1412 West Ohio Avenue, Midland, Texas. The Bush family, which included two future presidents—George H. W. Bush and George W. Bush and a first lady—Barbara Pierce Bush, lived in the home between November 1951 and November 1955.

In 2015, the National Park Service completed a reconnaissance survey of the George W. Bush Childhood Home to provide a preliminary evaluation of the property as a potential new unit of the national park system. The survey found that further analysis through a congressionally authorized special resource study was warranted. The John D. Dingell, Jr. Conservation, Management, and Recreation Act of 2019 directed the Secretary of the Interior to conduct a special resource study of the George W. Bush Childhood Home to evaluate its national significance and determine the

suitability and feasibility of designating it as a unit of the national park system.

As we begin the special resource study, we would like to engage the public in discussions about the George W. Bush Childhood Home to learn the public's ideas and opinions about the site. The National Park Service will evaluate the property using congressionally established criteria for national significance, suitability, feasibility, and the need for direct NPS management. Based on the analysis, the National Park Service will determine whether the site meets the criteria for inclusion in the national park system. The Secretary of the Interior will then submit the findings and a recommendation to Congress.

We hope you will take time to share your feedback through the NPS study website, which also includes more information and project updates:

<https://parkplanning.nps.gov/GWBush>

Contents

This newsletter introduces the special resource study and includes:

- Frequently Asked Questions
- Study Area
- Study Process
- How to Participate

About the National Park Service



The National Park Service preserves unimpaired the natural and cultural resources and values of the national park system for the enjoyment, education, and inspiration of this and future generations. The National Park Service cooperates with partners to extend the benefits of natural and cultural resource conservation and outdoor recreation throughout this country and the world. The National Park Service is a bureau within the Department of the Interior and manages more than 400 park units that comprise the national park system. Administration of park units occurs in many ways, from traditional units that are federally managed to non-traditional units that rely on partnerships and may have little, if any, federal landownership.

Frequently Asked Questions

What is a Special Resource Study?

A special resource study evaluates the eligibility of an area to be designated as a national park or other special designation. The National Park Service collects information about the quality of resources in the study area. If the resources meet the eligibility criteria, the National Park Service evaluates the potential for visitor enjoyment and efficient management and analyzes the feasibility and appropriateness of different management options. The NPS director will submit the final study to Congress. Regardless of the outcome of the study, new units of the national park system can only be established by an Act of Congress or by presidential proclamation.

How will the George W. Bush Childhood Home be evaluated?

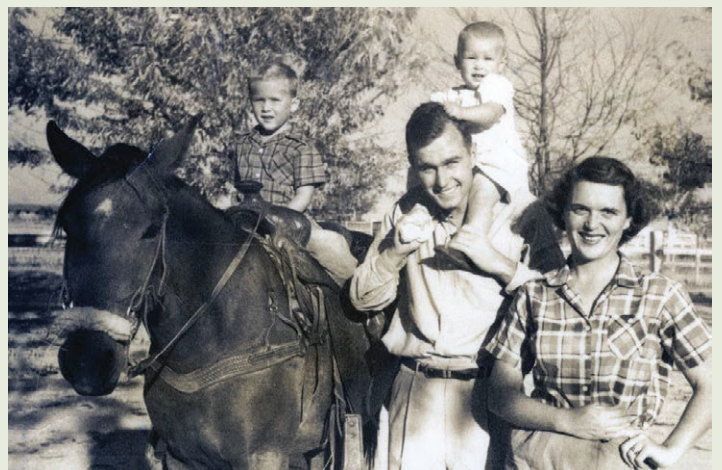
The 1998 National Parks Omnibus Management Act (54 *United States Code* 100507) established the process for identifying and authorizing studies of new national park system units. Under the law, a study area must meet all four of the following criteria to be recommended as an addition to the national park system:

- Contain nationally significant natural and/or cultural resources.
- Represent a natural or cultural resource that is not already adequately represented in the national park system or is not comparably represented and protected for public enjoyment by another land-managing entity.
- Must be (1) of sufficient size and appropriate configuration to ensure long-term protection of the resources and visitor enjoyment, and (2) capable of efficient administration by the National Park Service at a reasonable cost; important feasibility factors include landownership, acquisition costs, life cycle maintenance costs, access, threats to the resource, and staff or development requirements.
- Require direct NPS management that is clearly superior to other management approaches.

The NPS study team will evaluate the George W. Bush Childhood Home according to the above criteria for national significance, suitability, feasibility, and need for NPS management. If at any point throughout the study process NPS staff determine the site does not meet one of the criteria, the study will terminate and a document with a negative finding will be prepared for Congress.

What are some of the possible outcomes of the study?

Over the last 15 years, approximately one in four completed special resource studies have resulted in a positive finding whereby the study area meets all criteria required for inclusion in the national park system. Many studies conclude that the study resources do not meet all required criteria or find that existing management, technical or financial assistance, or local, state or private initiatives are preferable to the establishment of a new national park system unit. In the event that the special resource study results in a positive finding, Congress will decide whether to take action. Regardless of the outcome of the study, new units of the national park system can only be established by an Act of Congress or by presidential proclamation.



George H. W. and Barbara Bush with their children, George W. and Robin, have their photographs taken at the rodeo grounds in Midland, Texas, October 1950

Credit: George H. W. Bush Presidential Library and Museum (photo by Vogue Pictures)



George W. Bush's childhood home in Midland, Texas



Left to right: George W. Bush, age 8, in Little League Baseball uniform, Spring 1954; George W. Bush on a trip with his dad to the oil fields, Midland, Texas, circa 1955; George W. and Jeb Bush play in the snow, Midland, Texas, February 1955
Credit: George H. W. Bush Presidential Library and Museum



George H. W. Bush and son, George W. Bush, in front of 1412 West Ohio Avenue, Midland, Texas, circa late 1954

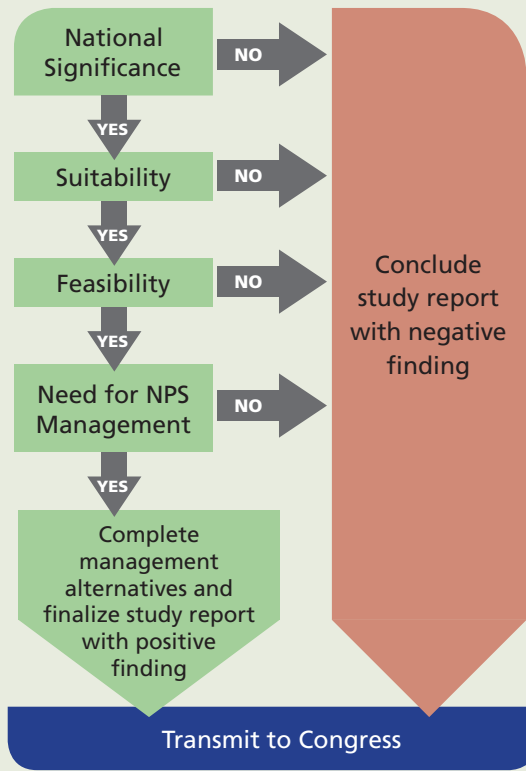
Credit: George H. W. Bush Presidential Library and Museum

Study Area



The Study Process

Special Resource Study (SRS) Completion Pathways



Left to right: George W. Bush in his Cub Scout uniform, Spring 1954; George W. Bush with bat and ball, June 1953
Credit: George H. W. Bush Presidential Library and Museum



Left to right: George W. Bush with his dog in Midland, Texas, February 11, 1954; Barbara, George W., and Jeb Bush at 1412 West Ohio, Midland, Texas, Spring 1954
Credit: George H. W. Bush Presidential Library and Museum

How to Participate

Your input is important to us. We would like to hear your thoughts and ideas about the following questions:

1. What is important or unique about the George W. Bush Childhood Home as it relates to the life of George W. Bush?
2. What is your vision for the George W. Bush Childhood Home? How would you like to see the site managed? What types of activities and experiences do you want to see as part of the site's future?
3. Do you have any ideas or concerns that the National Park Service should be aware of and/or address in the study process?
4. Do you have any other ideas or comments you would like to share with us?



George H. W. and George W. Bush with their dog on the steps of their home in Midland, Texas, circa 1954
Credit: George H. W. Bush Presidential Library and Museum

You can share your feedback and information with us in the following ways:

- Online: visit the study website (below), and click the "Open for Comment" link to submit answers to the topic questions.

<https://parkplanning.nps.gov/GWBush>

- By mail: send written comments to the mailing address below.

**National Park Service,
Denver Service Center – Planning Division**

**12795 West Alameda Parkway
PO Box 25287
Denver, CO 80225-0287**

**Project Manager:
Carrie Miller
303.969.2575**

- Participate in a virtual open house in early 2021 to learn about the study process and discuss the study with NPS team members. Information about public meetings will be posted on the study website: <https://parkplanning.nps.gov/GWBush>