



# **National Park Service Final Community Involvement Plan**

---

**Former Quarry Firing Range  
Hawai'i Volcanoes National Park  
Hawai'i County, Hawai'i  
September 18, 2020**



**Revision Log:**

Revision #	Revision Date	Revision Description



## TABLE OF CONTENTS

<b>1.0 Introduction.....</b>	<b>1</b>
1.1 Purpose and Objectives of the CIP .....	1
1.2 Comprehensive Environmental Response, Compensation, and Liability Act .....	1
1.3 Overview of the CIP .....	2
<b>2.0 Project Background .....</b>	<b>3</b>
2.1 Site Description and History .....	3
2.1.1 Site Description.....	3
2.1.2 Operational History.....	3
2.2 Previous Environmental Studies and Response Actions .....	3
2.3 Current and Future Site Activities .....	4
<b>3.0 Community Background.....</b>	<b>5</b>
3.1 Community Profile.....	5
3.2 Community Involvement History .....	5
3.3 Community Concerns and Needs.....	6
<b>4.0 Planned Community Involvement Activities.....</b>	<b>7</b>
4.1 Communication Methods and Community Involvement Activities .....	7
4.2 Community Involvement Activity Schedule .....	9
<b>5.0 References.....</b>	<b>10</b>

## LIST OF FIGURES

Figure 1	Regional Map
Figure 2	Site Location Map
Figure 3	Former Firing Range Map

## LIST OF APPENDICES

Appendix A	Glossary
Appendix B	Administrative Record File and Information Repository Details
Appendix C	Community Fact Sheets and Community Updates
Appendix D	Contact Information
Appendix E	Community Involvement Requirements



### **LIST OF ABBREVIATIONS AND ACRONYMS**

CERCLA	Comprehensive Environmental Response, Compensation, and Liability Act
CHF	Central Hazardous Materials Fund
CIP	Community Involvement Plan
DOI	United States Department of Interior
DU	Decision Unit
EE/CA	Engineering Evaluation / Cost Analysis
EPA	U.S. Environmental Protection Agency
HAVO	Hawai'i Volcanoes National Park
HI	Hawai'i
NCP	National Oil and Hazardous Substances Pollution Contingency Plan
NPS	National Park Service
PA	Preliminary Assessment
PRP	Potentially Responsible Party
Site	Former Quarry Firing Range
SI	Site Inspection
SSI	Supplemental Site Inspection



## 1.0 INTRODUCTION

The National Park Service (NPS) is issuing this *Community Involvement Plan* (CIP) as a resource to enable meaningful community involvement throughout its investigation, selection, and implementation of cleanup activities at the Former Quarry Firing Range (Site). The NPS is conducting these cleanup activities at the Site pursuant to the *Comprehensive Environmental Response, Compensation, and Liability Act* (CERCLA), 42 U.S.C. §§9601, *et seq.*, and its implementing regulations under the *National Oil and Hazardous Substances Pollution Contingency Plan* (NCP), 40 C.F.R., Part 300. NPS is committed to encouraging public participation and providing opportunities for communication between the NPS and the affected community, interested stakeholders, and community residents during the environmental investigation and cleanup activities at the Site.

CERCLA-related terms are defined in Appendix A, Glossary.

### 1.1 Purpose and Objectives of the CIP

The CIP has been prepared in accordance with CERCLA and the NCP. The CIP serves as a guide for the NPS to engage and inform community members, environmental groups, government officials, the media, and other interested parties in the environmental investigation and cleanup activities at the Site. The CIP is a “living” document and will be updated or revised, as appropriate, as Site conditions change.

The CIP has two key objectives. The first key objective is to provide for the dissemination of information to the public in a timely, accurate, meaningful, and understandable manner. The second objective is to create opportunities – and ensure the community understands those opportunities – for active public participation, enabling interested persons to provide valuable comments that can be used by the NPS project team for planning and decision making.

The strategies to accomplish these objectives take into consideration the location of the Site and surrounding community. The Site is located in the Hawai‘i Volcanoes National Park (HAVO) Area of Hawai‘i County, Hawai‘i (**Figures 1 and 2**). The Site is located on the southeast flank of Mauna Loa Volcano and the southwest flank of Kīlauea Volcano on the Island of Hawai‘i, off Highway 11 approximately 10 miles south of HAVO headquarters. The Site lies at approximately 2,900 feet elevation above mean sea level (MSL) and is situated within an abandoned quarry on the west side of the highway (accessed by a dirt road off Highway 11, near mile marker 38); access is limited by a locked gate. The Site is situated in a bowl-shaped depression within the quarry site (**Figure 3**). Other nearby landmarks include the Ka‘ū Desert Trailhead located approximately 0.9 mile to the northeast just off of Highway 11; Volcano Village is located approximately 11 miles to the northeast of the Site.

### 1.2 Comprehensive Environmental Response, Compensation, and Liability Act

The NPS is investigating and cleaning up the Site pursuant to CERCLA and the NCP. Congress enacted CERCLA (also known as Superfund) in 1980 to address releases and threatened releases of hazardous substances into the environment. CERCLA gives the President





broad powers to respond to hazardous substance releases and threatened releases as he/she deems necessary to protect the public health or welfare or the environment, including enforcement authority with respect to parties responsible for the releases. The President has delegated this authority to a number of federal departments and agencies, including the Department of the Interior (DOI). The NPS, an agency within the DOI, is the CERCLA lead agency for this Site.

To implement CERCLA, the U.S. Environmental Protection Agency (EPA) created the NCP, which is a set of regulations that detail how CERCLA cleanups are to be conducted, including requirements for community involvement activities. Different requirements apply to different types of response actions. A non-time-critical removal action is being conducted at the Site based on NPS's determination that a planning period of six months or more is available prior to the start of removal activities at the Site because no immediate threat to public health or welfare or the environment is present at the Site. As part of the non-time-critical removal action, the NPS is conducting an engineering evaluation/cost analysis (EE/CA) to fully characterize the nature and extent of Site contamination, evaluate associated potential risks to human health and safety and the environment, identify relevant cleanup requirements, develop a range of cleanup alternatives, and identify a recommended response action alternative for the Site. As the lead agency for the site, NPS must involve the community during the engineering evaluation and cost analysis process in a manner detailed in the NCP, and this CIP is part of that community involvement process.

### 1.3 Overview of the CIP

The CIP specifies the community involvement activities that the NPS expects to undertake as investigation and cleanup of the Site proceeds. This CIP is organized as follows:

- Section 1.0: Introduction – A description of the purpose of the CIP.
- Section 2.0: Site Background – An overview of Site description and history, previous Site investigations, and current and future Site activities.
- Section 3.0: Community Background – A community profile, history of community involvement at the Site, and summary of community concerns and questions.
- Section 4.0: Community Involvement Activities – A description of planned methods and activities for communicating with the public concerning Site activities, and a general schedule of anticipated community involvement activities.
- Section 5.0: References – A list of references used in developing this CIP.

The appendices include a glossary (**Appendix A**), administrative record file and information repository details (**Appendix B**), community fact sheets and community updates (**Appendix C**), contact information (**Appendix D**), and a table of minimum community involvement requirements (**Appendix E**).



## 2.0 PROJECT BACKGROUND

### 2.1 Site Description and History

This section describes the Site and its operational history.

#### 2.1.1 Site Description

The Former Quarry Firing Range (Site) lies at an elevation of approximately 2,900 feet above msl, located near the western boundary of the park. It is located on the southeast flank of Mauna Loa Volcano and the southwest flank of Kīlauea Volcano (**Figures 1 and 2**). The Site is situated in an abandoned quarry near the south end of the Park, along Highway 11 near mile marker 38, at the western margin of Ka‘ū Desert and is located about 260 feet west of Highway 11. The site is currently accessed by a gated dirt road, but the area is not a closed area so people could walk in from the road or other locations. The road curves down to a bowl-shaped depression that was used for the firing range (**Figure 3**). Land uses are unlikely to change in the future.

The east, southeast and south slopes of the “bowl” were used as the backstop for firearms practice. The Site sits on a slight depression, and storm water falling on the site is unlikely to flow offsite. No surface water was observed during the site reconnaissance, and the ground surface did not exhibit erosion gullies or other indications of water flow.

The Site is moderately vegetated with dry-land forest species such as ‘a‘ali‘i, ‘ūlei, and non-native grasses. The south central portion of the backstop is heavily vegetated with grass, limiting observation of the ground surface. The east portion of the backstop appears to have had rock pushed over the bank from the roadway at the top of the backstop, and bullet fragments were observed in this area.

#### 2.1.2 Operational History

The former firing range was reported to be constructed in 1940 and used until 1982 (when the Hilina Pali Firing Range was constructed). The former range is situated within an abandoned quarry on the west side of the highway. The east, southeast and south slopes of the quarry were used as the backstop for firearms target practice. Very little soil overlies the firing range vicinity; silty soils and basaltic gravel were observed at the ground surface, and lava rock is exposed in some areas. The former range area sits in a slight depression. According to the records of the Memorandum for the Superintendent, Department of the Interior NPS Hawaii National Park, Hawaii, between 1937 and 1958, the range was used for rifle, machine gun, small-bore arms, and pistol practice by the personnel of the Kīlauea Military Camp, the emergency police guard, Federal Bureau of Investigation (FBI), and NPS Park Rangers. Practice frequencies are unknown.

### 2.2 Previous Environmental Studies and Response Actions

In 2013, a Preliminary Assessment (PA) was completed by NPS. The 2013 PA reported bullet fragments observed on the ground surface near and west of the backstop area. Wood and



corrugated metal sheets with bullet holes were observed lying among the rocks on the backstop (and above the backstop), and bullets were observed throughout the upper ground surface.

A Site Inspection (SI) was conducted in 2016 to gauge the extent of lead contamination at the Site. Multi-incremental sampling soil samples were collected at each of three decision units. The backstop/firing target area was designated as Decision Unit (DU)-1; the firing line and range floor area was designated as DU2; and the background area was designated as DU3. A release of lead was documented as a result of the SI sampling.

A Supplemental Site Inspection (SSI) was conducted by NPS in 2016/2017. DU-1 and 2 were broken into multiple units and based on on-site testing, DU-4 was added to the sampling. Results of the SSI indicated that lead, copper, and antimony exceeded human health and/or ecological screening values. A Streamlined Risk Evaluation was prepared for the site and concluded that a potential for risk existed for three types of ecological receptors at the Site (plants, soil invertebrates, and omnivorous small mammals).

### **2.3 Current and Future Site Activities**

Currently, NPS is preparing an EE/CA as part of a non-time-critical removal action to gather additional information to fully characterize the nature and extent of Site contamination. The NPS has determined that it has sufficient data from previous sampling efforts at the Site, so in this instance, the EE/CA process will not include additional site sampling. Existing data will be used to conduct risk assessments to evaluate human health and ecological concerns, and cleanup goals will be established. If cleanup is required, the EE/CA will also develop, present, and evaluate cleanup alternatives.

The EE/CA document prepared during this process will be available for public review and comment during a 30-day period following development and review by NPS.





### 3.0 COMMUNITY BACKGROUND

#### 3.1 Community Profile

The Site is located within the Hawai'i Volcanoes National Park located within Hawai'i County, Hawai'i (**Figures 1 and 2**). The Site is located within an abandoned quarry on the west side of the highway, accessed by a dirt road off Highway 11, near mile marker 38. Access is limited by a locked gate. The Site is situated in a bowl-shaped depression within the quarry site.

Approximately 2,016,700 visitors visited HAVO in 2017. HAVO is located 45 minutes southwest of Hilo, and is home to two volcanoes including Kīlauea, one of the most active volcanoes on earth. HAVO encompasses 335,259 acres from the summit of Mauna Loa to the sea. There are over 150 miles of hiking trails through volcanic craters, deserts and rainforests, as well as petroglyphs and two active volcanoes (Mauna Loa and Kīlauea) located within the park. The Park also has a visitor center, the Kīlauea Visitor Center, located one quarter mile beyond the park entrance station.

The two communities in closest proximity to the Site are Volcano Village and Pāhala.

Volcano Village, HI – Volcano Village is located approximately 10 miles east of the Site. It has a total land area of 58.6 square miles. Highway 11 passes through the southern part of the community, leading northeast 27 miles to Hilo and southwest 37 miles to Naʻalehu. In 2010, Volcano Village had a population of 2,575, with 1,228 households. The population density was 45.4 people per square mile. The racial makeup of Volcano Village was 51.53% White, 0.74% African American, 0.39% American Indian & Alaska Native, 11.57% Asian, 9.79% Native Hawaiian & Pacific Island, 0.43% from other races, and 25.55% from two or more races. Hispanic or Latino of any race were 8.82% of the population.

Pāhala, HI – The Site is located approximately 13 miles northeast of the northern property boundary of Pāhala; Highway 11 forms the southeast border of the community. The highway leads northeast 52 miles to Hilo and southwest 12 miles to Naʻalehu. The main entrance to Hawai'i Volcanoes National Park is 23 miles to the northeast of Pāhala on Highway 11. Pāhala's main industries include one of the world's largest macadamia nut growing orchards, cattle and horse ranching, and the small independent Ka'ū Coffee Mill & Visitor Center. Pāhala had a population of 1,356 in 2010. The racial makeup in Pāhala is 8.85% White, 0.07% Native American, 47.68% Asian, 10.45% Pacific Islander, 0.51% from other races, and 32.51% from two or more races. Hispanic or Latino of any race were 6.31% of the population. The estimated median household income in 2017 was \$43,721, and the estimated per capita income that year was \$16,929.

#### 3.2 Community Involvement History

The NPS has established a Site information repository that houses the administrative record file (see Section 4.1 below for further detail). The address, contact information, and operating hours for the information repository are provided in **Appendix B**.



### 3.3 Community Concerns and Needs

The Park is unaware of any community concerns. If interested parties have concerns, they may contact Ms. Danielle Foster, the designated Site spokesperson, whose contact information is provided in **Appendix D**.



## 4.0 PLANNED COMMUNITY INVOLVEMENT ACTIVITIES

As noted earlier, the key objectives of the community involvement program are to establish and encourage communication between NPS and the community and provide opportunities for the public to provide input throughout the course of CERCLA response activities at the Site. For the purposes of this document, “community” refers to any interested party, not just people living in close proximity to the site.

The following methods and techniques will be used to promote public participation and establish steps to provide timely information to interested citizens, agency staff, government officials, the media, and the community at large. The first part of this section describes each community involvement activity and the second part provides a schedule for when those activities will occur.

*Important: Upon request, NPS will endeavor to meet identified needs for translation, access to electronic communications, disability access, or other accommodations for people with special needs.*

### 4.1 Communication Methods and Community Involvement Activities

The following methods and activities will be used to promote public participation and establish the channels to provide timely information to interested citizens, agency staff, government officials, the media, and the community at-large.

- **Site Spokesperson**  
Ms. Danielle Foster (Environmental Protection Specialist for Hawai‘i Volcanoes National Park and primary point of contact) and Mr. Stephen Mitchell (Environmental Programs Branch Chief and secondary point of contact) are the designated NPS spokespeople who will inform the community of actions taken, respond to inquiries, provide information concerning the Site, and act as liaisons between the NPS and community members, environmental groups, government officials, the media, and other interested parties. See **Appendix D** for contact information.
- **Administrative Record File and Information Repository**  
The administrative record file is housed in the information repository and contains Site environmental investigation reports and other information that NPS considers or relies upon in the response action selection process. NPS will update the administrative record file at key points during the response action process, such as when important investigations and reports are completed. See **Appendix B** for administrative record file and information repository details.



- **Public Comment Periods**

While NPS accepts comments on ongoing response activities from the public at any time, at certain times a formal public comment period will be provided. A public comment period is a formal time period during which the NPS accepts comments from the public on specific proposed actions or decisions. There will be a 30-day public comment period once the final draft EE/CA Report is issued. Upon timely request (preferably to the Site spokesperson and in writing) during the public comment period, the NPS will extend the public comment period by a minimum of 15 days. In addition, upon request, the NPS will meet identified needs for translation, access to electronic communications, or other accommodations for persons with special needs (See Public Notices, below).

Following the close of a formal public comment period, the NPS will prepare written responses to significant public comments *received during the public comment period* (called a “responsiveness summary”); the responsiveness summary will be added to the administrative record file.

- **Public Notices**

The NPS will issue public notices to inform the community and the general public of public comment periods, publication of key documents, and major Site milestones. NPS will use one or more of the following methods to distribute public notices about the Site:

- News release
- Social Media
- [parkplanning.nps.gov](http://parkplanning.nps.gov)
- Park postings as described in Park Visitor Communication.

- **Public Meetings**

Given the nature and location of the Site, and minimal public interest, NPS does not intend to schedule public meetings or open houses relating to this project. As noted above, there will be public notice when the draft final EE/CA Report is made available for public review and comment.

- **Newspaper Contacts/News Releases**

News releases will be issued at key milestones to ensure the distribution of accurate and timely information. Generally, all media outlets regularly contacted by Park staff will be included when news releases are issued.

- **Community Organization Presentations**

If requested, the NPS will meet with interested community organizations, such as the Kupuna Consultation Group (group of local individuals and Native Hawaiian organizations that provide park input on projects, including Section 106 consultation), or provide information for community organizations to include in their newsletters. Interested community organizations can discuss community organization presentations by calling or emailing the Site spokesperson at the contact information provided in Appendix D, Contact Information.



- **Park Visitor Communication**

The NPS has determined that the most effective ways to provide Site information to Park visitors will be to use the following methods:

- Park website;
- Informed Park staff (with sufficient information to address visitor questions); and
- Community Updates.

- **Site Website**

NPS may provide basic Site-related information on the Hawai'i Volcanoes National Park website, under the "Planning" webpage.

- **Contact Information**

NPS contact information will be included in Community Updates, public notices, news releases, and on the Site website. Contact information for NPS representatives as well as for other key individuals is provided in **Appendix D, Contact Information**.

- **Community Involvement Plan Revision**

To remain flexible and able to respond to the evolving needs of the community and changes to the Site, the CIP will be reviewed and revised as needed. As the response action progresses, NPS staff may identify and use additional means or activities to inform and engage the community.

## 4.2 Community Involvement Activity Schedule

The NPS selected the above methods and activities to engage and inform the community regarding the Site and Site activities. This section provides a schedule for when those activities will occur.

- **Ongoing Activities**

- Finalize CIP
- Create and maintain administrative record files and index
- Establish repositories for housing the administrative record

- **Future Activities**

- Solicit comments on EE/CA report
- Post response to comments for EE/CA report
- Notify public of EE/CA Action Memo



## 5.0 REFERENCES

Hawai'i International Environmental Services. Site Inspection Report. For Hawai'i Volcanoes National Park, Quarry Firing Range. April 27, 2016.

The Hawaiian Islands website, <https://www.gohawaii.com/islands/hawaii-big-island/regions/kau/volcanoes-national-park>

National Park Service (NPS). *Community Involvement Requirements and Best Practices*. 2014. Available at <https://connect.doi.gov/nps/csportal>.

United States Department of the Interior (USDOI). Environmental Compliance Memorandum No. ECM 14-2: *Central Hazardous Materials Fund (CHF) Comprehensive Environmental Response, Compensation, and Liability Act (CERCLA) Process for CHF Projects*. May 2014. Available at <http://www.doi.gov/pmb/oepe/upload/ECM-14-2-CERCLA-Process-for-CHF-Projects.pdf>.

United States Environmental Protection Agency (EPA). *Superfund Community Involvement Handbook*. Apr. 2005. Available at [http://www.epa.gov/superfund/community/cag/pdfs/ci\\_handbook.pdf](http://www.epa.gov/superfund/community/cag/pdfs/ci_handbook.pdf).

United States Environmental Protection Agency (EPA). *Community Involvement Toolkit*. Available at <http://www.epa.gov/superfund/community/toolkit.htm>.

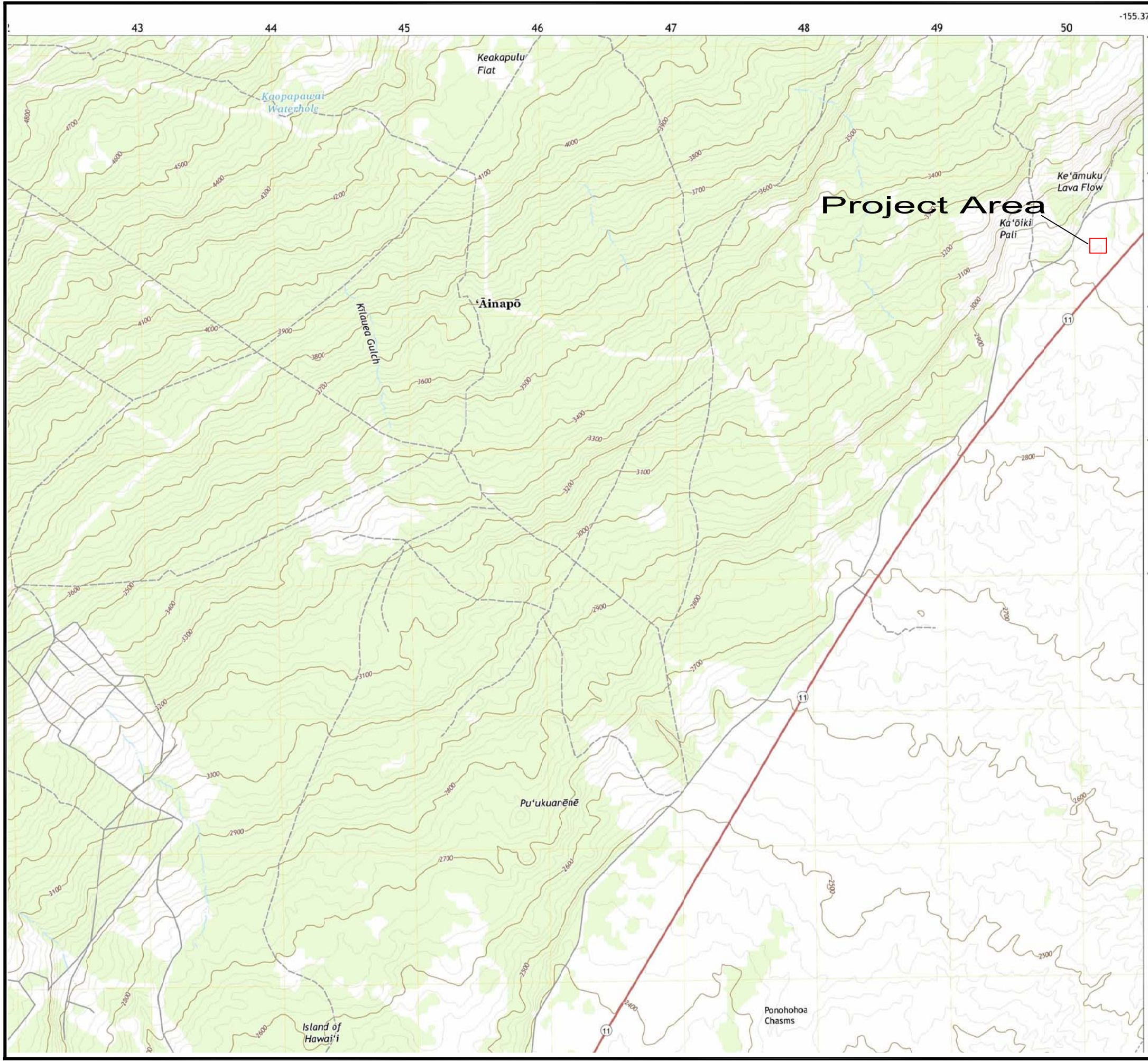




## FIGURES





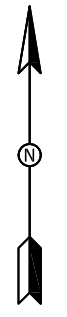


Legend

 Project Area



1" = 2,500 Feet  
Prepared for National Park Service

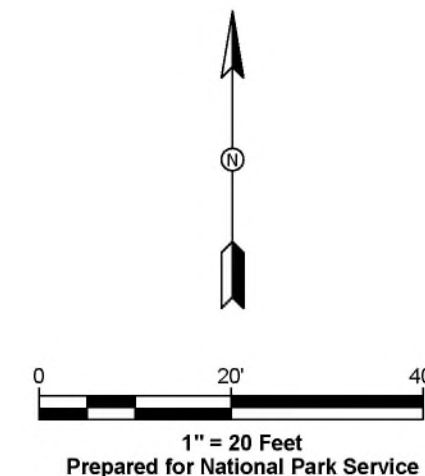
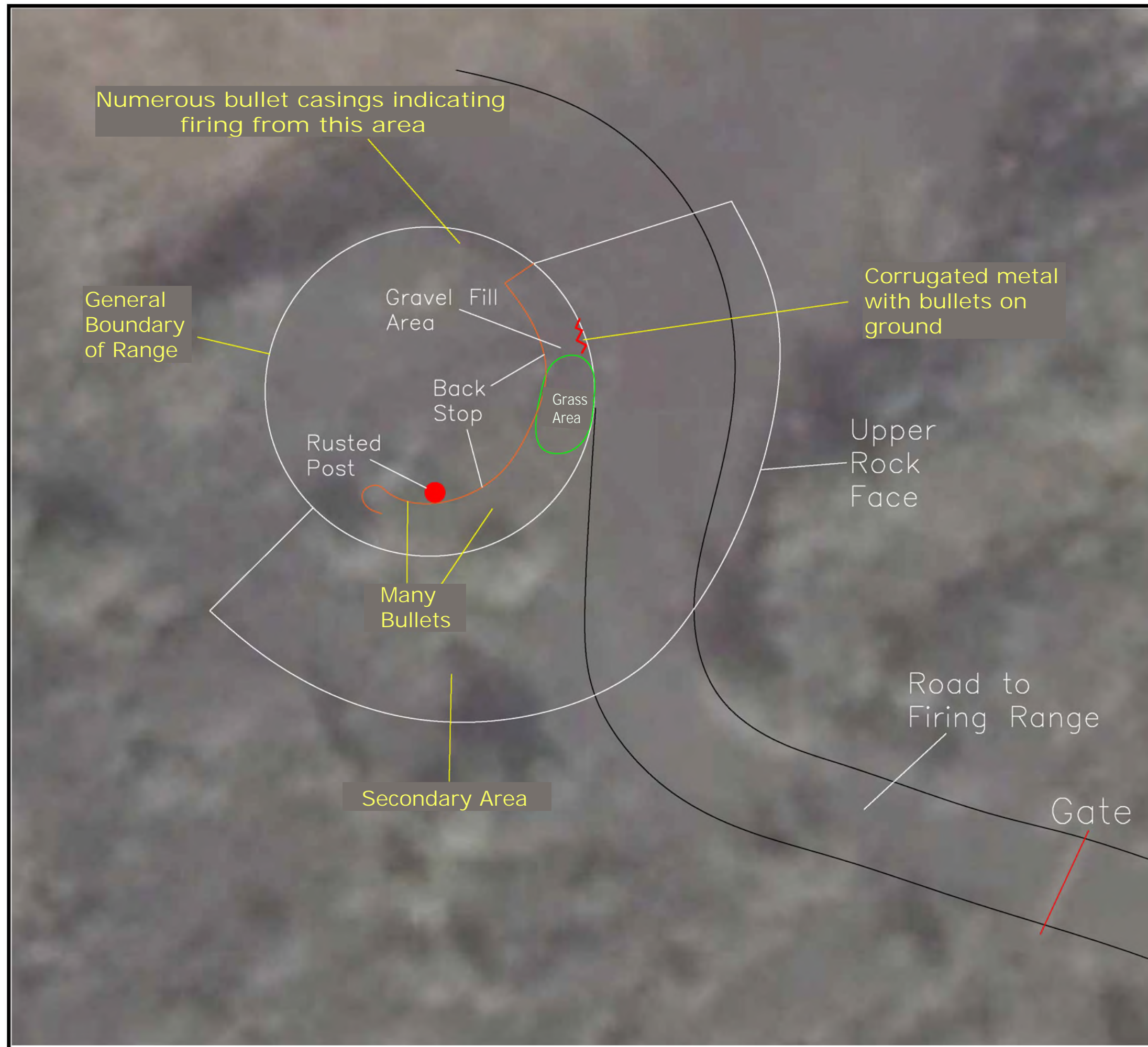


PROFESSIONAL  
ENVIRONMENTAL  
ENGINEERS, INC.

**Figure 2**  
**Site Location Map**  
**Hawaii Volcanoes National Park (HAVO)**  
**Former Firing Range**

Project No. 073.11.001	Date 10/9/19	Drawn By GW	Checked By MK
---------------------------	-----------------	----------------	------------------





PROFESSIONAL  
ENVIRONMENTAL  
ENGINEERS, INC.

**Figure 3**  
**Former Firing Range Map**  
**Hawaii Volcanoes National Park (HAVO)**  
**Former Firing Range**

Project No.  
073.11.001

Date  
12/5/19

Drawn By  
GW

Checked By  
MK



## APPENDIX A: GLOSSARY

**Definitions for CERCLA-related words found throughout the CIP are provided below.**

**Administrative Record File:** A file that contains all information considered or relied upon by the lead agency to make its decision on the selection of a response action under CERCLA. See Appendix B, Administrative Record File and Information Repository Details, for further information on the Site administrative record file.

**CERCLA (Comprehensive Environmental Response, Compensation, and Liability Act):** A federal law, commonly known as “Superfund,” which Congress enacted in 1980 and amended in 1986 and 2002. The law provides broad federal authority to respond directly to releases or threatened releases of hazardous substances that may endanger public health or welfare or the environment; establishes the categories of persons who are liable for such releases; and outlines a framework for investigating and responding to releases and threatened releases of hazardous substances where the lead agency determines it is necessary. CERCLA generally authorizes three types of cleanup actions: emergency response actions, removal actions, and remedial actions.

**Cleanup:** Used in this document to describe actions taken to address a release or threat of a release of hazardous substances, pursuant to CERCLA, that could affect public health or welfare or the environment. The word “cleanup” is sometimes used interchangeably with the terms remedial action, removal action, response action, remedy, remediation, or corrective action.

**Community Interview:** Interviews conducted by the lead agency as part of the process of preparing a Community Involvement Plan. For most response actions, the NCP requires the lead agency to conduct community interviews to determine appropriate activities to ensure public involvement in Site-related decisions.

**Community Involvement Plan (CIP):** A plan that explains how NPS intends to enable meaningful community involvement throughout the cleanup process by specifying planned community involvement activities to address community needs, concerns, and expectations identified through community interviews and other means.

**Decision Unit (DU):** A decision unit is the smallest volume of soil for which a decision will be made based on Incremental Sampling Methodology (see below).

**Hazardous Substance:** Any one of the more than 800 substances defined under CERCLA and the NCP as potentially posing a threat to human health or the environment. Hazardous substances include materials defined as ignitable, corrosive, reactive, or toxic under the Resource Conservation and Recovery Act (RCRA), as well as additional substances listed under the Clean Water Act and hazardous air pollutants listed under the Clean Air Act.

**Incremental Sampling Methodology:** A structured composite sampling and processing protocol that reduces data variability and provides a reasonably unbiased estimate of mean contaminant concentrations in a volume of soil targeted for sampling. Incremental Sampling Methodology provides representative samples of specific soil volumes defined as decision units



by collecting numerous increments of soil (typically 30-100 increments) that are combined, processed, and subsampled according to specific protocols.

**Information Repository:** A location open to members of the general public where a collection of documents (including the administrative record file) relevant to a particular CERCLA Site is made available for public review and copying. See Appendix B, Administrative Record File and Information Repository Details, for the location and address of the Former Quarry Firing Range information repository.

**Lead Agency:** The government agency with the primary authority to investigate, plan and implement a response action under CERCLA and the NCP at a particular site.

**National Oil and Hazardous Substances Pollution Contingency Plan (NCP):** More commonly called the National Contingency Plan or NCP, it is the federal government's regulatory blueprint for responding to both oil spills and releases and threatened releases of hazardous substances. The NCP is the result of our country's efforts to develop a national response capability and promote overall coordination among the hierarchy of responders and contingency plans. The regulations, published at 40 C.F.R. Part 300, detail how CERCLA is to be implemented.

**Non-Time-Critical Removal Action:** A removal action conducted when the lead agency determines that there is a planning period of at least six months before on-site activities must be initiated.

**Notice of Availability:** A formal notice announcing the issuance and public availability of a document (e.g., proposed plan) or documents (e.g., the administrative record file or updates thereto). A Notice of Availability is also issued when the information repositories are established. The notice may also announce commencement of a public comment period.

**Proposed Plan:** A document summarizing the cleanup alternatives analyzed in the feasibility study that also describes the lead agency's preferred alternative. This document is made available for public review and comment.

**Public Comment Period:** A period during which the public can formally review and comment on various documents and proposed response actions.

**Removal Action:** A type of CERCLA response action with a streamlined planning process. A removal action is conducted to address all or a part of a release or threatened release of hazardous substances when the release requires an expedited, time-critical response, or when the release is of limited size and complexity such that streamlined response planning is appropriate. There are two types of removal actions – time-critical and non-time-critical; sometimes emergency response actions (undertaken by the U.S. Environmental Protection Agency) are referred to as removal actions. The term refers both to the entire removal response action, as well as just the cleanup phase of such an action.





**Response Action:** The most general CERCLA term used to describe any action taken to respond to a release or threatened release of hazardous substances to protect the public health or welfare or the environment. The term includes all phases of the response, from investigation through monitoring and even enforcement activities. There are generally three types of CERCLA response actions that may be undertaken by NPS as the lead agency: time-critical removal actions, non-time-critical removal actions, and remedial actions. The response action at Former Quarry Firing Range is a remedial action.

**Responsiveness Summary:** Document summarizing the significant comments received during a public comment period and documenting the lead agency's responses to the comments.

**Site:** The 0.33-acre area contaminated or potentially contaminated by a release or threatened release of hazardous substances from the former Quarry Firing Range. The Site is generally defined by being 11 miles south of the HAVO headquarters west of Highway 11.



## APPENDIX B: ADMINISTRATIVE RECORD FILE AND INFORMATION REPOSITORY DETAILS

The Site administrative record file is maintained at two locations, which may be reviewed at the following information repositories during the hours indicated:

Location	
<b>Location Name:</b>	Hawai'i Volcanoes National Park - Headquarters
<b>Address:</b>	One Crater Rim Drive, Hawaii National Park, HI 96718
<b>Phone:</b>	808-985-6073 or 808-985-6171
<b>Days and Hours:</b>	Monday 9 a.m. – 5 p.m. Tuesday 9 a.m. – 5 p.m. Wednesday 9 a.m. – 5 p.m. Thursday 9 a.m. – 5 p.m. Friday 9 a.m. – 5 p.m.
For file review appointments, contact:	
<b>Name:</b>	Danielle Foster
<b>Title:</b>	Environmental Protection Specialist
<b>Organization:</b>	Hawai'i Volcanoes National Park
<b>Phone:</b>	808-985-6073
<b>Email:</b>	<a href="mailto:danielle_foster@nps.gov">danielle_foster@nps.gov</a>
<b>Days and Hours:</b>	Mon. - Fri. 9:00 a.m. to 5: 00 p.m.



## **APPENDIX C: COMMUNITY FACT SHEETS AND COMMUNITY UPDATES**

Currently, no prior community fact sheets or community updates exist for the Site. This Appendix will be updated as these are developed.



## APPENDIX D: CONTACT INFORMATION

The NPS will update contact information as necessary.

### Site-Specific Contacts

For information about Site cleanup activities, please contact:

	Site Spokesperson	Park Contact
<b>Name:</b>	Danielle Foster	Danielle Foster
<b>Title:</b>	Environmental Protection Specialist (and Primary Point of Contact)	Environmental Protection Specialist (and Primary Point of Contact)
<b>Organization:</b>	Hawai'i Volcanoes National Park	Hawai'i Volcanoes National Park
<b>Address:</b>	PO Box 52, Hawaii National Park, HI 96718	PO Box 52, Hawaii National Park, HI 96718
<b>Phone:</b>	808-985-6073	808-985-6073
<b>Email:</b>	<a href="mailto:danielle_foster@nps.gov">danielle_foster@nps.gov</a>	<a href="mailto:danielle_foster@nps.gov">danielle_foster@nps.gov</a>

	NPS Regional Contact	NPS Headquarters Contact
<b>Name:</b>	Steve Mitchell, P.E.	
<b>Title:</b>	Environmental Programs Branch Chief (and Secondary Point of Contact)	
<b>Organization:</b>	National Park Service, Interior Regions 8, 9, 10, and 12	
<b>Address:</b>	333 Bush Street, Suite 500, San Francisco, CA 94105-2828	
<b>Phone:</b>	415-623-2286	
<b>Email:</b>	<a href="mailto:steve_mitchell@nps.gov">steve_mitchell@nps.gov</a>	



## APPENDIX E: NCP COMMUNITY INVOLVEMENT REQUIREMENTS

The NCP specifies the following community involvement requirements for the non-time-critical removal action at this Site:

Required When	Requirement	Citation– 40 C.F.R.
	Designate a Site spokesperson.	§ 300.415(n)(1)
No later than when the Engineering Evaluation and Cost Analysis Approval Memorandum is signed	Establish two information repositories (one at a central location and one at or near the Site), and establish an administrative record file and place in the information repositories.	§ 300.415(n)(4)(i); § 300.800(a); § 300.805(a)
	Publish notice of availability of the information repositories and the administrative record file in a major local newspaper of general circulation.	§ 300.415(n)(4)(i); § 300.820(a)(1)
	Prepare and issue a Community Involvement Plan.	§ 300.415(n)(4)(i)
Prior to completion of the Engineering Evaluation and Cost Analysis	Prepare and issue a Community Involvement Plan.	§ 300.415(n)(4)(i)
Upon completion of Engineering Evaluation and Cost Analysis and publication of the Engineering Evaluation and Cost Analysis Report	Publish notice of availability and brief description of the Engineering Evaluation and Cost Analysis Report in a major local newspaper of general circulation.	§ 300.415(n)(4)(ii); § 300.820(a)(1)
	Provide a public comment period of at least 30 days for submission of written and oral comments. Upon timely request during the public comment period, extend the public comment period by a minimum of 15 additional days.	§ 300.415(n)(4)(iii); § 300.820(a)(2)
	After the close of the public comment period, prepare a written response to significant comments received during the public comment period; consider and respond to significant comments submitted before the public comment period, as appropriate; place any such responses into the administrative record file.	§ 300.415(n)(4)(iv); § 300.820(a)(2)