





Hyde Park

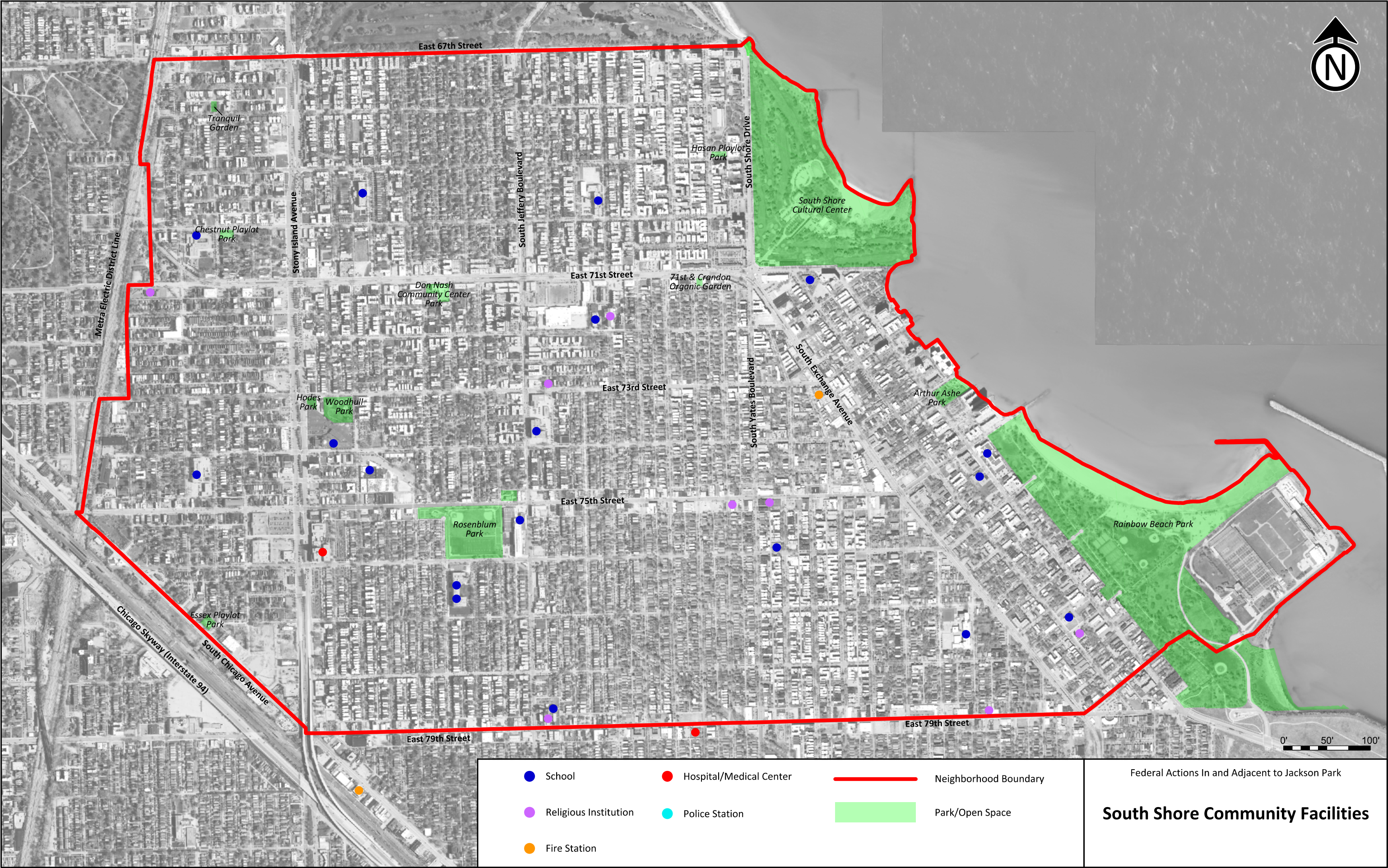
Woodlawn

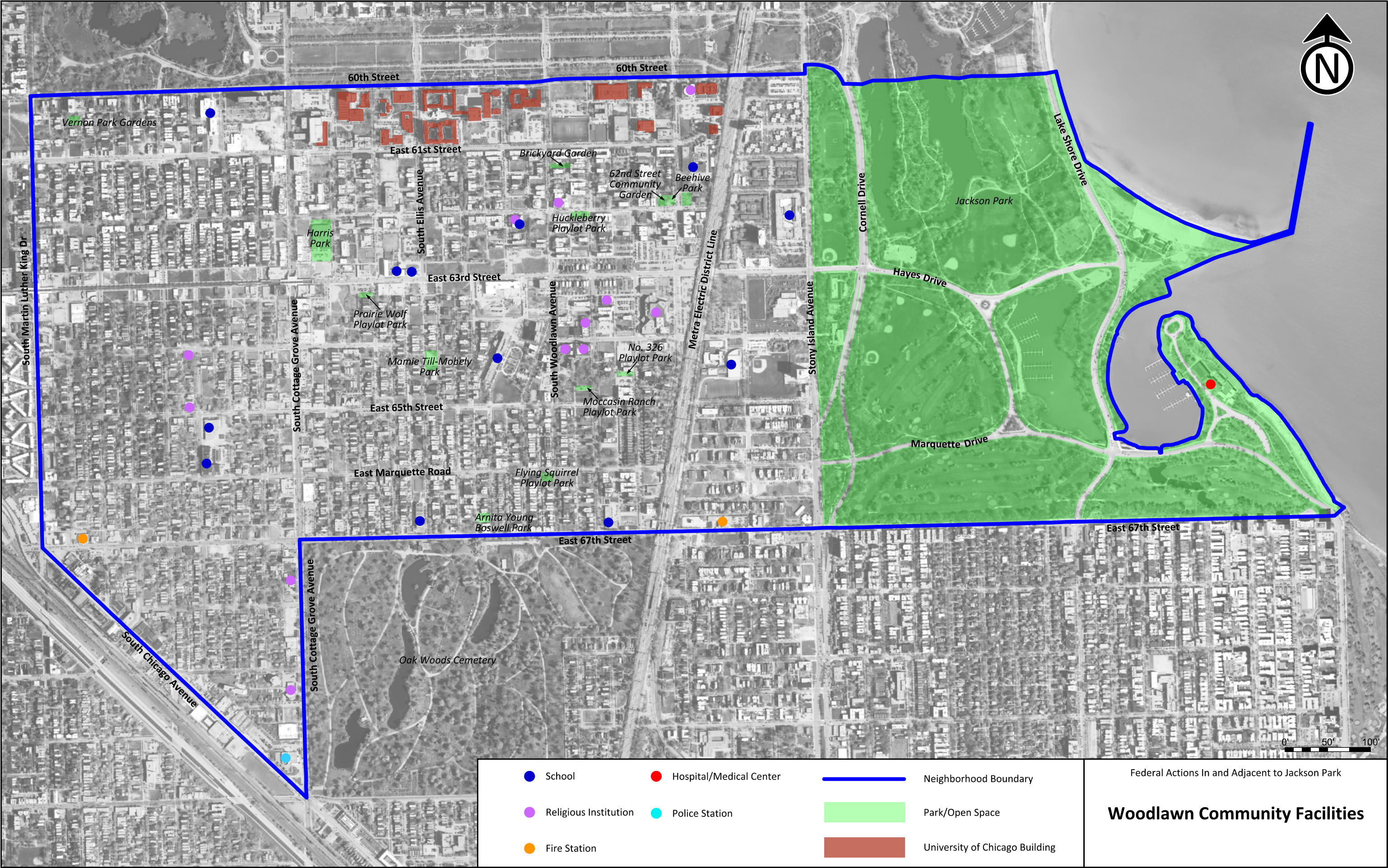
South Shore

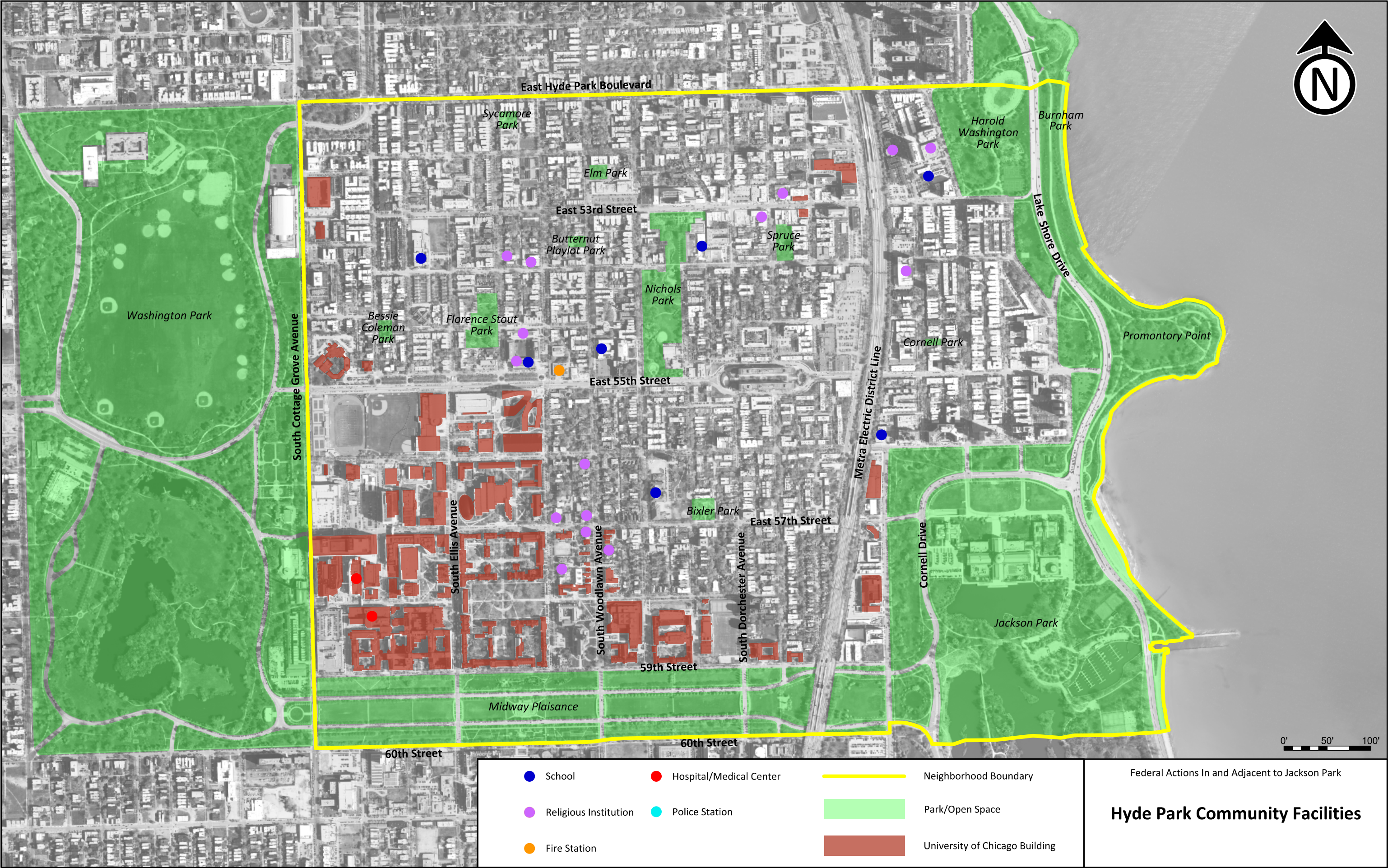
Project Study Area

Federal Actions In and Adjacent to Jackson Park

**Project Study Area and
Surrounding Neighborhoods**



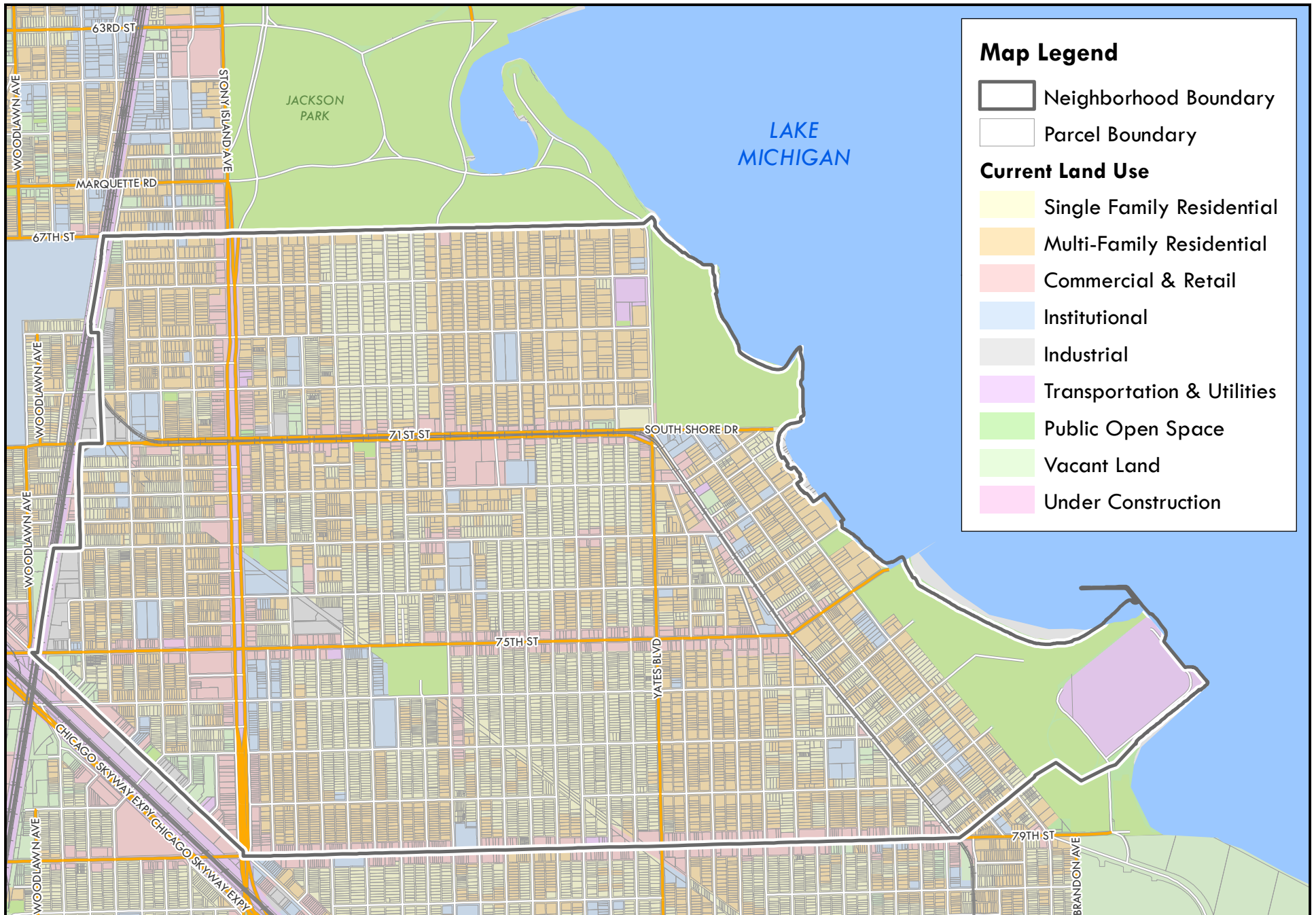
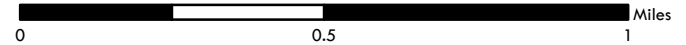




SOUTH SHORE NEIGHBORHOOD

CURRENT LAND USE

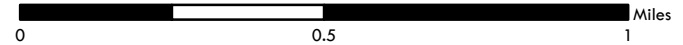
Prepared by the City of Chicago Department of Planning and Development
Bureau of Planning, Historic Preservation, and Sustainability; 10/24/2018



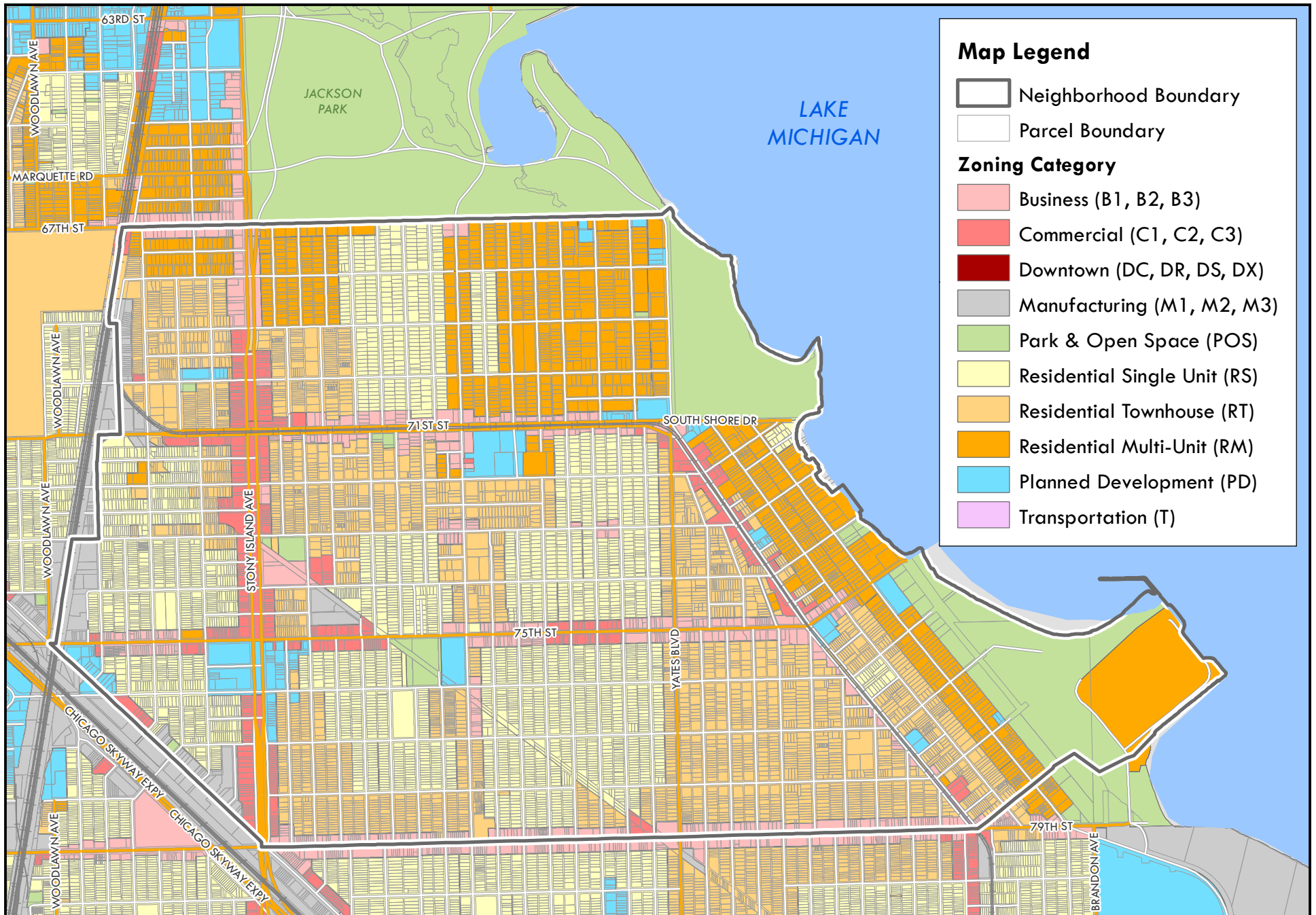
SOUTH SHORE NEIGHBORHOOD

CURRENT ZONING

Prepared by the City of Chicago Department of Planning and Development
Bureau of Planning, Historic Preservation, and Sustainability; 10/24/2018



N



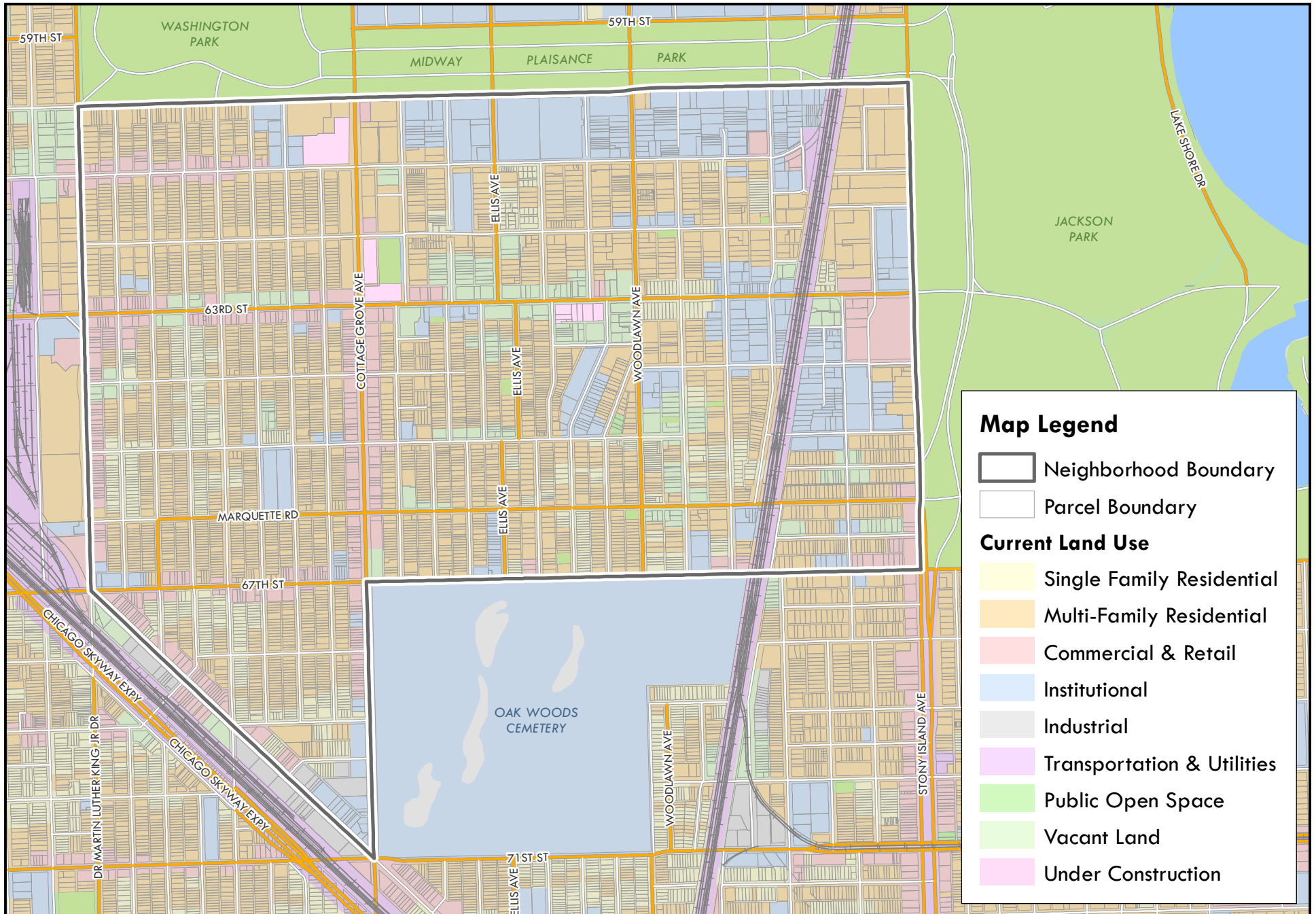
WOODLAWN NEIGHBORHOOD

CURRENT LAND USE

Prepared by the City of Chicago Department of Planning and Development
Bureau of Planning, Historic Preservation, and Sustainability; 10/17/2018

0 0.25 0.5 Miles

N



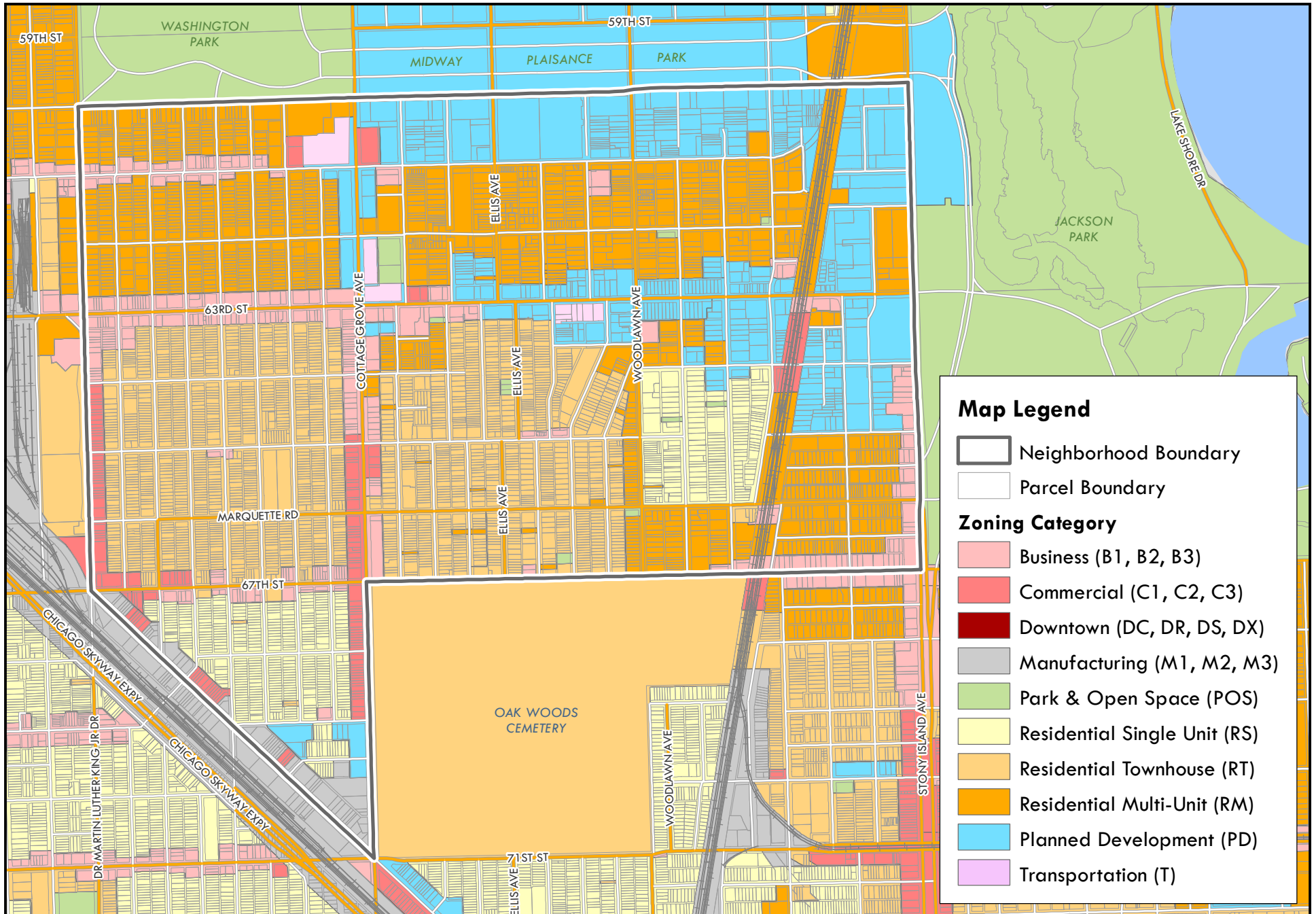
WOODLAWN NEIGHBORHOOD

CURRENT ZONING

Prepared by the City of Chicago Department of Planning and Development
Bureau of Planning, Historic Preservation, and Sustainability; 10/17/2018

0 0.25 0.5 Miles

N



WOODLAWN COMMUNITY DEVELOPMENT

REVIEW OF PREVIOUS PLANS

DOCUMENT TITLE	Rebuilding the Village	63rd Street TOD Study	63rd/Cottage Grove Retail Analysis	Woodlawn Master Plan	2017 Sprint ↔	Restitching Woodlawn	Woodlawn 2025	Corridor Development Init.	Getting Ahead of Gentrification
PUBLICATION DATE	2005	2014	2015	2016	2017	2017	2017	2018	2018
AUTHOR	LISC	AECOM	Goodman Williams; Ginkgo; CR&M	Gensler	CCAC	CCAC	SOM	Metropolitan Planning Council	Network of Woodlawn
COMMISSIONED BY	Woodlawn Preserv. & Invest. Corp.	DPD	DPD	Network of Woodlawn	Chicago Central Area Committee	Chicago Central Area Committee	Network of Woodlawn	Cook County Land Bank Authority	Network of Woodlawn
RESIDENTIAL / HOUSING									
Encourage home ownership	•						•		•
Encourage reinvestment in rental housing	•				•				•
Expand supply of mixed income housing options	•	•				•		•	•
Expanded housing types / choice	•						•		•
Implement inclusionary zoning strategies									•
Improved access to resources	•			•					•
Increased rental support for low income households				•			•		•
Redevelop vacant buildings / infill lots	•		•	•					•
Target existing residents over investors									•
COMMERCIAL / RETAIL									
Central shopping district	•						•		
Create a food "scene" and skill sets							•		
Develop live/work spaces or incubator space	•				•	•	•		
Expanded entertainment options							•		
Expanded neighborhood-serving / convenience retail	•	•	•		•	•	•	•	
Healthy food / full service grocery			•		•	•	•		
Redevelop vacant buildings / infill lots	•		•	•			•	•	
OPEN SPACE / PHYSICAL									
Community gardens / urban ag / nurseries					•		•		
Community space	•				•		•	•	
Improved linkages (bike, ped, etc.)		•			•	•	•		
New playground / open space	•	•			•	•	•		
Streetscape improvements	•	•	•		•	•	•		
OTHER PRIORITIES									
Creation of CDC, SBC or similar	•			•	•	•			•
Expanded recreational / youth programming	•						•		
Improved alignment of stakeholders' efforts	•			•					
Improved educational facilities and opportunities	•			•			•		
Improved workforce dev't / employment opportunities	•			•	•		•		•
Perception of safety	•	•	•	•			•	•	
Public art / community sensitive	•						•		
Strengthen social service programming	•						•		

* None of these was taken to City Plan Commission review / adoption

Foundational documents for 1Woodlawn initiative

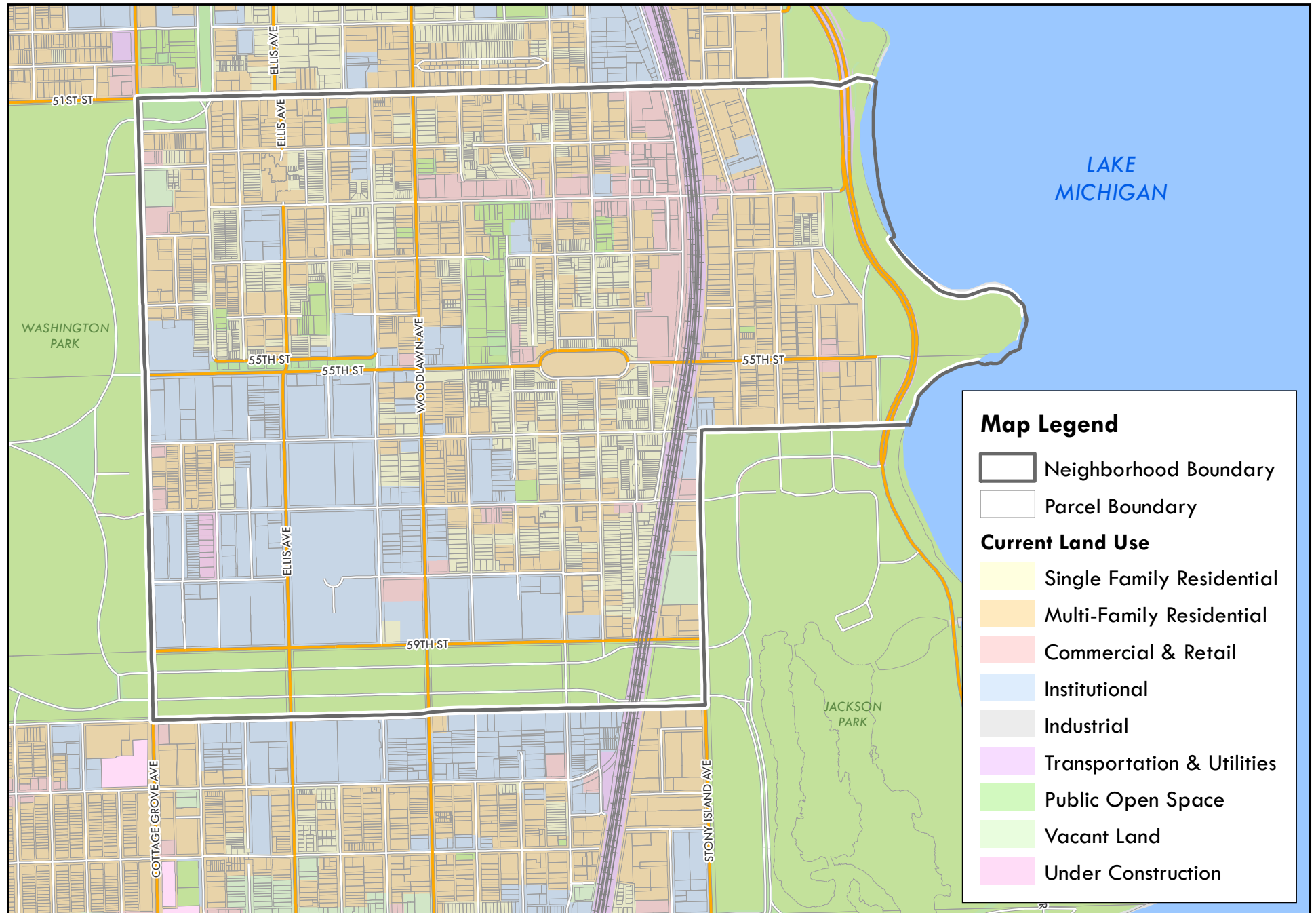
HYDE PARK NEIGHBORHOOD

CURRENT LAND USE

Prepared by the City of Chicago Department of Planning and Development
Bureau of Planning, Historic Preservation, and Sustainability; 10/24/2018

0 0.25 0.5 Miles

N



HYDE PARK NEIGHBORHOOD

CURRENT ZONING

Prepared by the City of Chicago Department of Planning and Development
Bureau of Planning, Historic Preservation, and Sustainability; 10/24/2018

0 0.25 0.5 Miles

N

