



WELCOME

Visitor Use Site Management Planning

Please provide comments
YOUR INPUT IS IMPORTANT TO US!

You can submit your comments until
May 31, 2020 to the National Park Service
planning website:
<https://parkplanning.nps.gov/parks>

Search by park, and click on Lake Roosevelt NRA
to find “Visitor Use Site Management Planning”

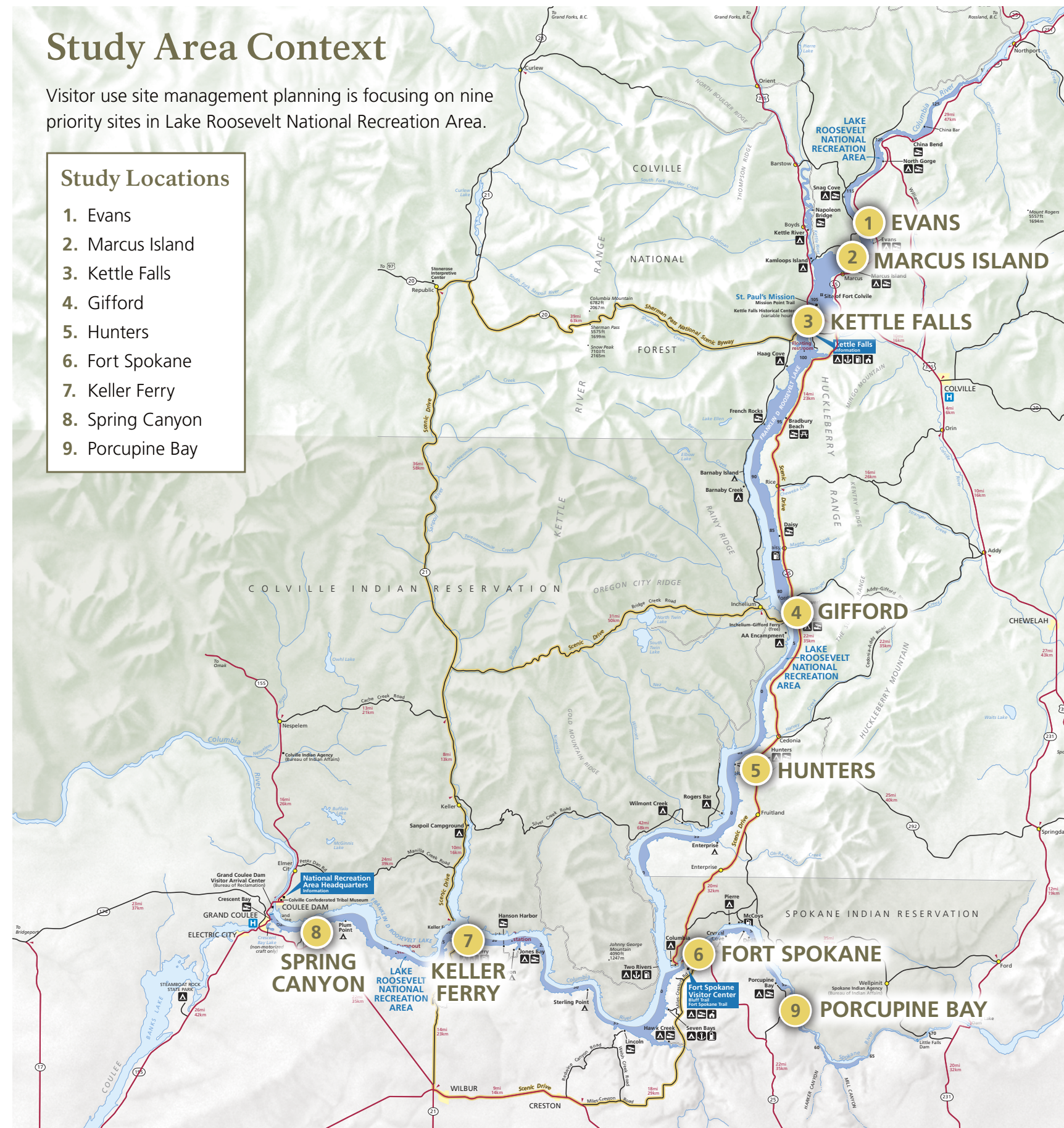


Study Area Context

Visitor use site management planning is focusing on nine priority sites in Lake Roosevelt National Recreation Area.

Study Locations

1. Evans
2. Marcus Island
3. Kettle Falls
4. Gifford
5. Hunters
6. Fort Spokane
7. Keller Ferry
8. Spring Canyon
9. Porcupine Bay





EVANS
SITE 1

ACTIONS COMMON
TO ALL SITES

- (CA) Make accessibility improvements
- (CB) Put in RV length spots
- (CC) Delineate campsites
- (CD) Create space for tents
- (CE) Clarify pedestrian circulation
- (CF) Improve vehicular circulation
- (CG) Improve parking
- (CH) Move or add vehicle counters
- (CI) Close areas for winter season
- (CK) Implement vegetation management
- (CL) Install water efficient irrigation
- (CN) Remove swim dock
- (CQ) Provide rigging and staging locations

PROPOSED ACTIONS
FOR THIS SITE

- (A) Add boat parking stalls to the day use parking lot
- (B) Stabilize shoreline by using bio-engineering methods to replace the failing seawall
- (C) Add boat tie-ups along the shoreline
- (D) Repurpose boat launch by replacing with non-motorized boat launch and restoring to natural conditions
- (E) Add seasonal, self-contained large RV campsites to day use parking lot





LEGEND

- RV Area
- Walk-In Campsites
- Mixed-Use Area
- Improvement
- Removal

MARCUS ISLAND
SITE 2

ACTIONS COMMON
TO ALL SITES

- CA Make accessibility improvements
- CB Put in RV length spots
- CC Delineate campsites
- CD Create space for tents
- CE Clarify pedestrian circulation
- CF Improve vehicular circulation
- CH Move or add vehicle counters
- CI Close areas for winter season
- CK Implement vegetation management
- CN Remove swim dock

PROPOSED ACTIONS
FOR THIS SITE

- A Replace boat launch with non-motorized boat launch
- B Add walk-in campsites
- C Formalize self-contained RV campsites at "Sturgeon Point"
- D Designate beach access area for non-motorized boating only





KETTLE FALLS
SITE 3

ACTIONS COMMON
TO ALL SITES

- (CA) Make accessibility improvements
- (CB) Put in RV length spots
- (CC) Delineate campsites
- (CD) Create space for tents
- (CE) Clarify pedestrian circulation
- (CF) Improve vehicular circulation
- (CG) Improve parking
- (CH) Move or add vehicle counters
- (CK) Implement vegetation management
- (CL) Install water efficient irrigation
- (CP) Automate skid docks
- (CQ) Provide rigging and staging locations

PROPOSED ACTIONS
FOR THIS SITE

- (A) Divide and relocate group campsites
- (B) Add stop gates to the canal and fill in the canal with soil over time
- (C) Update circulation to establish a one-way road to boat launch
- (D) Develop deep water boat launch to 1220 - 1218 foot elevation
- (E) Upgrade fish cleaning station





KETTLE FALLS
SITE 3

**ACTIONS COMMON
TO ALL SITES**

- ⒸA Make accessibility improvements
- ⒸC Delineate campsites
- ⒸD Create space for tents
- ⒸE Clarify pedestrian circulation
- ⒸH Move or add vehicle counters
- ⒸK Implement vegetation management
- ⒸL Install water efficient irrigation

**PROPOSED ACTIONS
FOR THIS SITE**

- Ⓐ Divide and relocate group campsites
- Ⓑ Add stop gates to the canal and fill in the canal with soil over time



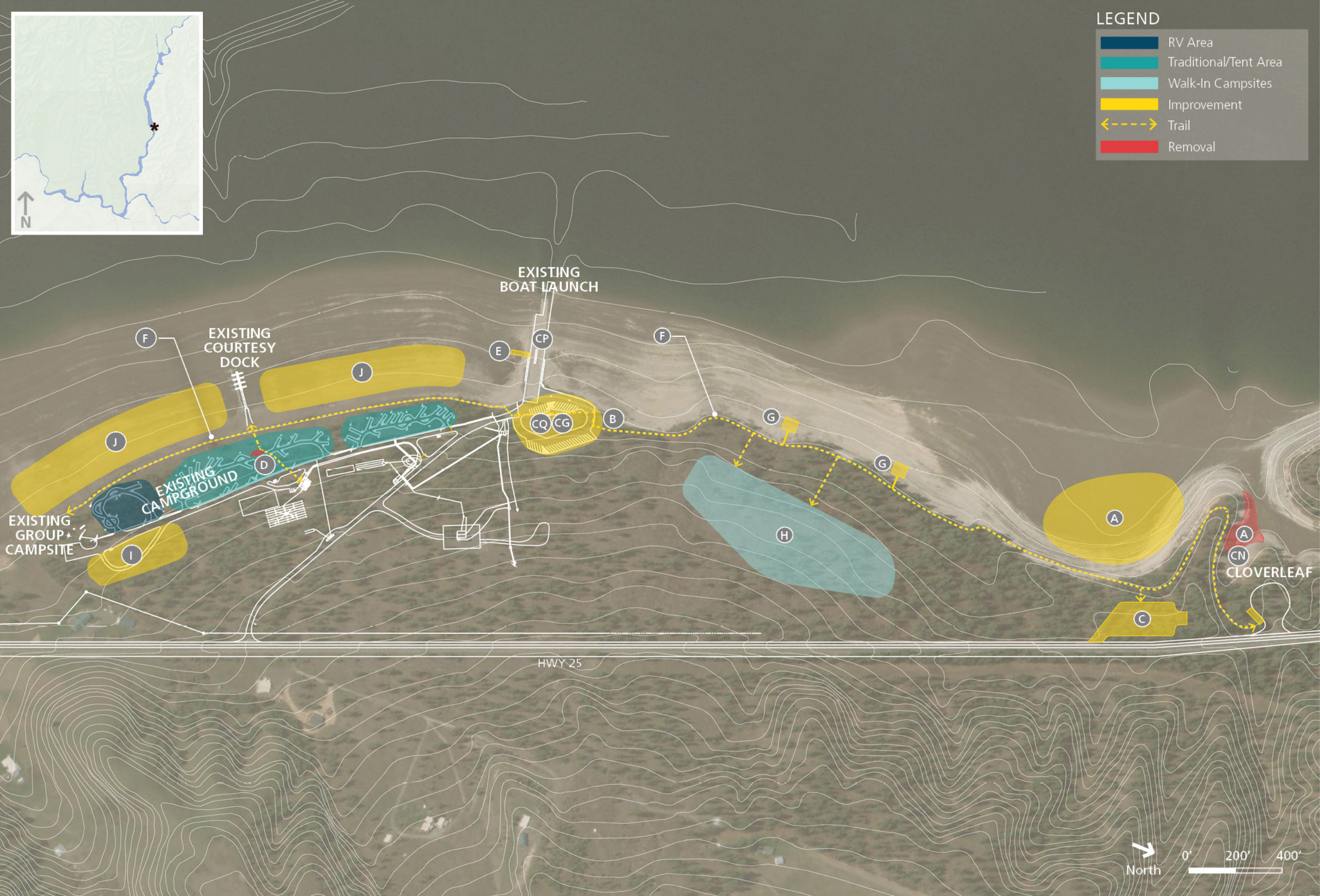
KETTLE FALLS
SITE 3

ACTIONS COMMON
TO ALL SITES

- (CA) Make accessibility improvements
- (CB) Put in RV length spots
- (CC) Delineate campsites
- (CD) Create space for tents
- (CE) Clarify pedestrian circulation
- (CF) Improve vehicular circulation
- (CG) Improve parking
- (CH) Move or add vehicle counters
- (CK) Implement vegetation management
- (CP) Automate skid docks
- (CQ) Provide rigging and staging locations

PROPOSED ACTIONS
FOR THIS SITE

- (C) Update circulation to establish a one-way road to boat launch
- (D) Develop deep water boat launch to 1220 - 1218 foot elevation
- (E) Upgrade fish cleaning station



GIFFORD
SITE 4

**ACTIONS COMMON
TO ALL SITES**

- Ⓐ Make accessibility improvements
- Ⓑ Put in RV length spots
- Ⓒ Delineate campsites
- Ⓓ Create space for tents
- Ⓔ Clarify pedestrian circulation
- Ⓕ Improve vehicular circulation
- Ⓖ Improve parking
- Ⓗ Move or add vehicle counters
- Ⓘ Implement vegetation management
- Ⓚ Install water efficient irrigation
- Ⓛ Remove amphitheater
- Ⓜ Remove swim dock
- Ⓟ Automate skid docks
- Ⓡ Provide rigging and staging locations

**PROPOSED ACTIONS
FOR THIS SITE**

- Ⓐ Remove beach access designation from Cloverleaf; designate beach access with wave dissipators along the shoreline trail
- Ⓑ Extend parking lot at boat launch to serve as trailhead parking and for campground overflow parking
- Ⓒ Formalize visitor created parking lot
- Ⓓ Convert campsite into a pull off for loading/unloading gear to/from the courtesy dock; in addition, create a pedestrian path to the restroom
- Ⓔ Add government dock
- Ⓕ Add accessible shoreline trail
- Ⓖ Add accessible lake overlooks along shoreline trail
- Ⓗ Add walk-in campsites along the trail to Cloverleaf
- Ⓘ Add a trailer parking area
- Ⓚ Add boat tie-ups along the shoreline



HUNTERS
SITE 5

ACTIONS COMMON
TO ALL SITES

- CA Make accessibility improvements
- CB Put in RV length spots
- CC Delineate campsites
- CD Create space for tents
- CE Clarify pedestrian circulation
- CF Improve vehicular circulation
- CG Improve parking
- CH Move or add vehicle counters
- CI Close areas for winter season
- CJ Gate group sites
- CL Install water efficient irrigation
- CN Remove swim dock
- CO Relocate fish cleaning station
- CP Automate skid docks
- CQ Provide rigging and staging locations

PROPOSED ACTIONS
FOR THIS SITE

- A Create trail to/from courtesy dock by removing one campsite
- B Add seasonal, self-contained large RV campsites in overflow parking lot
- C Add floating dock to the existing boat launch docks to provide a 30 minute docking area
- D Create trail from day use parking lot to beach access and courtesy dock
- E Add walk-in campsites with parking near existing campground



FORT SPOKANE
SITE 6

ACTIONS COMMON
TO ALL SITES

- (CA) Make accessibility improvements
- (CB) Put in RV length spots
- (CC) Delineate campsites
- (CD) Create space for tents
- (CE) Clarify pedestrian circulation
- (CF) Improve vehicular circulation
- (CG) Improve parking
- (CH) Move or add vehicle counters
- (CI) Gate group sites
- (CK) Implement vegetation management
- (CL) Install water efficient irrigation
- (CM) Remove amphitheater
- (CN) Remove swim dock
- (CP) Automated skid docks
- (CQ) Provide rigging and staging locations

PROPOSED ACTIONS
FOR THIS SITE

- (A) Convert both group campsites to day use area
- (B) Formalize trail to main day use area; add accessible overlooks along trail
- (C) Create trail from Fort Spokane to Porcupine Bay with trailhead parking
- (D) Add an additional lane to the boat launch
- (E) Add walk-in campsites
- (F) Create three group campsites
- (G) Add seasonal, self-contained large RV campsites in overflow parking lot





**KELLER FERRY
SITE 7**

**ACTIONS COMMON
TO ALL SITES**

- CA Make accessibility improvements
- CB Put in RV length spots
- CC Delineate campsites
- CD Create space for tents
- CE Clarify pedestrian circulation
- CF Improve vehicular circulation
- CG Improve parking
- CH Move or add vehicle counters
- CI Close areas for winter season
- CK Implement vegetation management
- CL Install water efficient irrigation
- CM Remove amphitheater
- CN Remove swim dock
- CQ Provide rigging and staging locations

**PROPOSED ACTIONS
FOR THIS SITE**

- A Add new campground loop with RV double stall and trailer parking
- B Stabilize shoreline by using bio-engineering methods to replace the deteriorating gabion baskets
- C Add walk-in campsites and parking
- D Improve circulation with parking lot turn around; maintain walk-in campsites on north side of lot and convert campsites on south side of lot to day use parking stalls



KELLER FERRY
SITE 7

ACTIONS COMMON
TO ALL SITES

- CA Make accessibility improvements
- CC Delineate campsites
- CG Improve parking
- CH Move or add vehicle counters
- CJ Gate group campsites
- CK Implement vegetation management

PROPOSED ACTIONS
FOR THIS SITE

- E Edge treatment along road to preserve natural landscape
- F Formalize parking for day use area





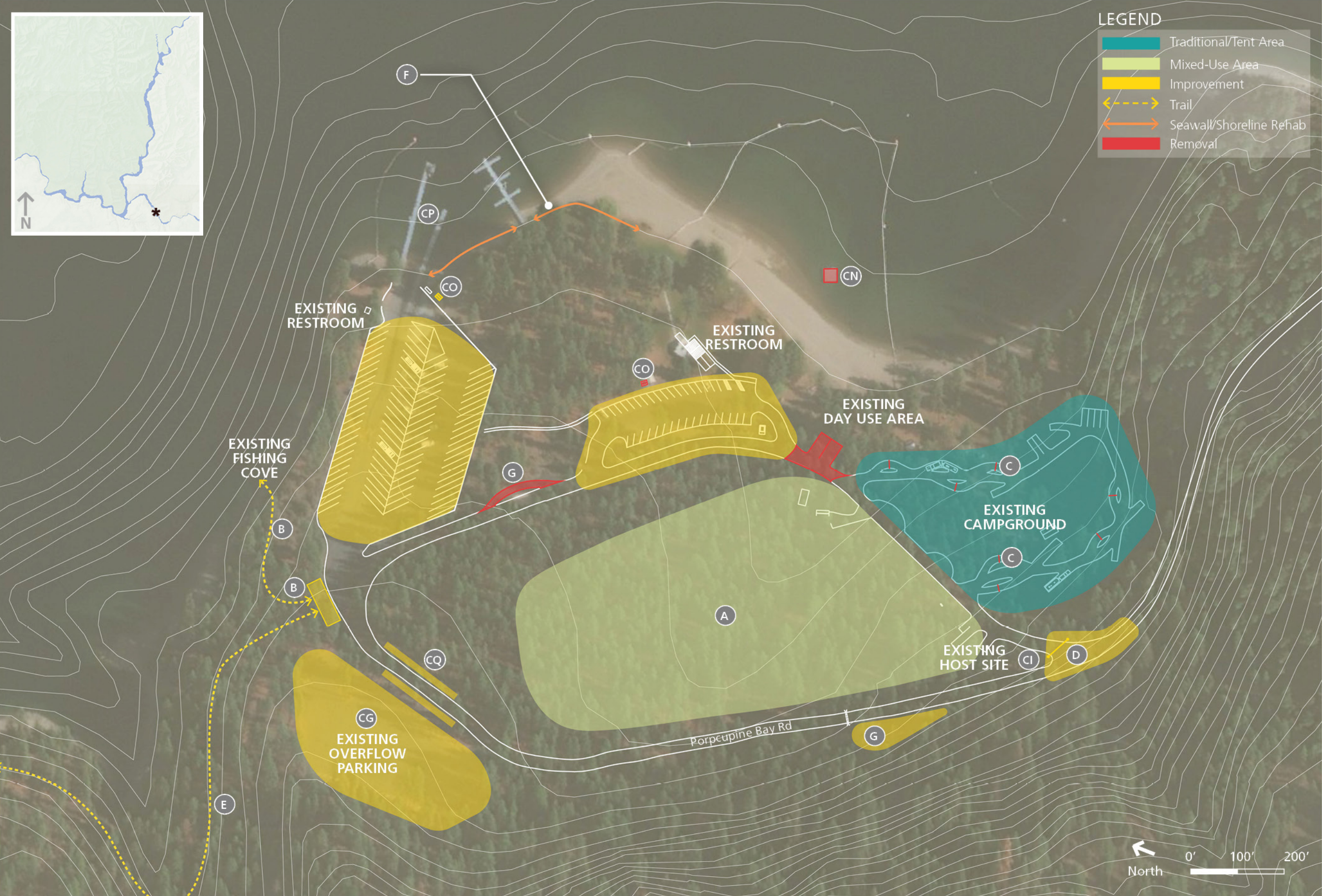
SPRING CANYON
SITE 8

ACTIONS COMMON
TO ALL SITES

- CA Make accessibility improvements
- CB Put in RV length spots
- CC Delineate campsites
- CD Create space for tents
- CE Clarify pedestrian circulation
- CF Improve vehicular circulation
- CG Improve parking
- CH Move or add vehicle counters
- CI Close areas for winter season
- CK Implement vegetation management
- CL Install water efficient irrigation
- CN Remove swim doc
- CO Relocate fish cleaning station
- CP Automate skid dock
- CQ Provide rigging and staging locations

PROPOSED ACTIONS
FOR THIS SITE

- A Create multi-use trail from upper campground to day use areas
- B Remove canopy shades/shelters at existing campsites
- C Remove one comfort station at upper loop
- D Add an RV campground loop
- E Reduce the number of campsites in the lower loop
- F Convert group campsite to host site
- G Add group campsite to the area above the day use area
- H Repurpose the concession building; potential plaza space for food trucks
- I Add non-motorized boat launch adjacent to the existing boat launch
- J Create two-way loop to improve circulation at boat launch
- K Add NPS admin use only parking
- L Create accessible trail to shore with accessible picnic areas



PORCUPINE BAY
SITE 9

**ACTIONS COMMON
TO ALL SITES**

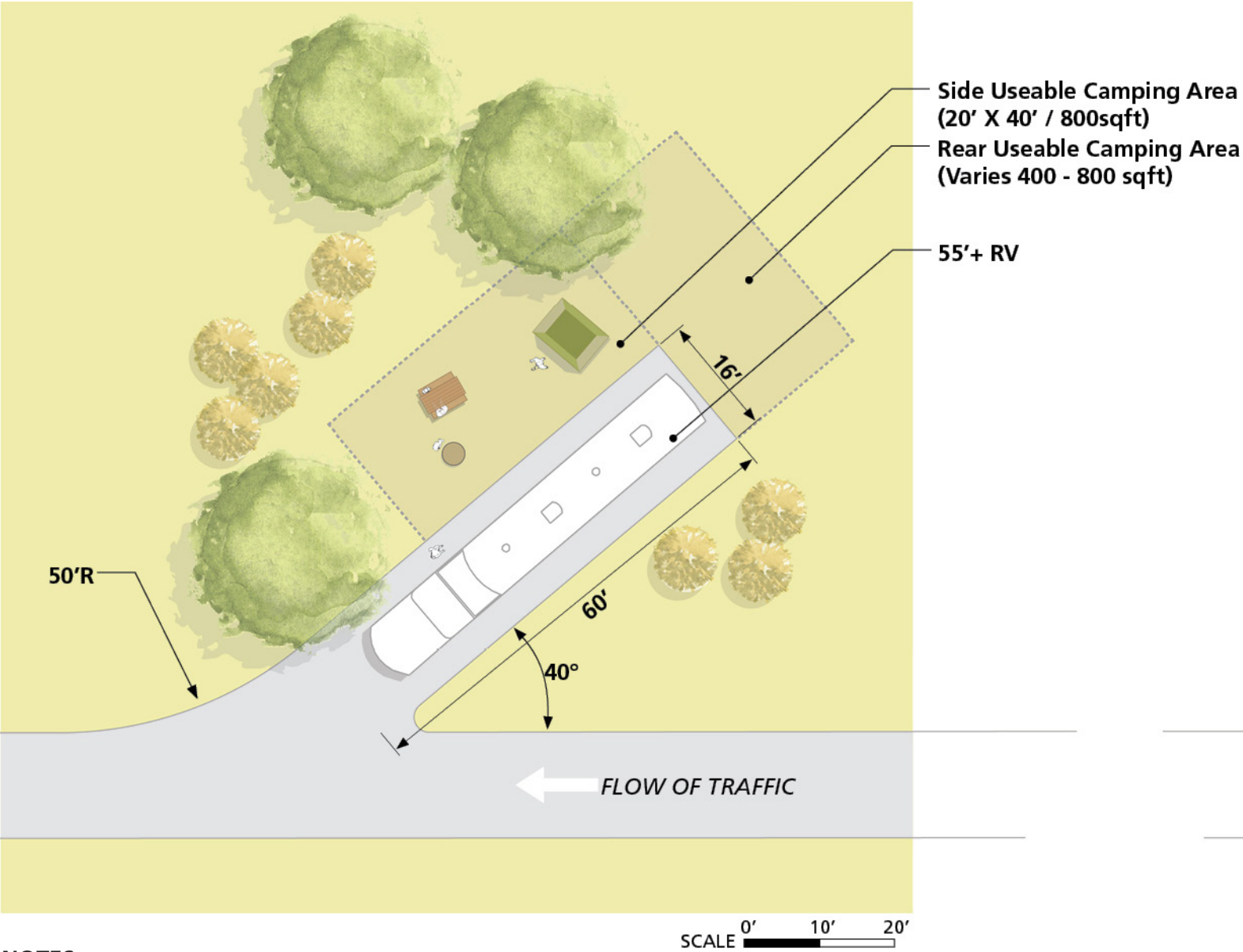
- (CA) Make accessibility improvements
- (CB) Put in RV length spots
- (CC) Delineate campsites
- (CD) Create space for tents
- (CE) Clarify pedestrian circulation
- (CF) Improve vehicular circulation
- (CG) Improve parking
- (CH) Move or add vehicle counters
- (CI) Close areas for winter season
- (CK) Implement vegetation management
- (CN) Remove swim dock
- (CO) Relocate fish cleaning station
- (CP) Automate skid dock
- (CQ) Provide rigging and staging locations

**PROPOSED ACTIONS
FOR THIS SITE**

- (A) Connect new campground loop, with RV and tent campsites, to existing campground loop and revise to one-way traffic flow
- (B) Add new trailhead and trail to fishing cove
- (C) Remove curbs splitting campsites in existing loop
- (D) Move entrance gate to allow for turn around
- (E) Create trail to Fort Spokane to provide backpacking opportunity
- (F) Stabilize the shoreline by using bio-engineering methods to replace deteriorating gabion baskets
- (G) Relocate dump station to Porcupine Bay Road

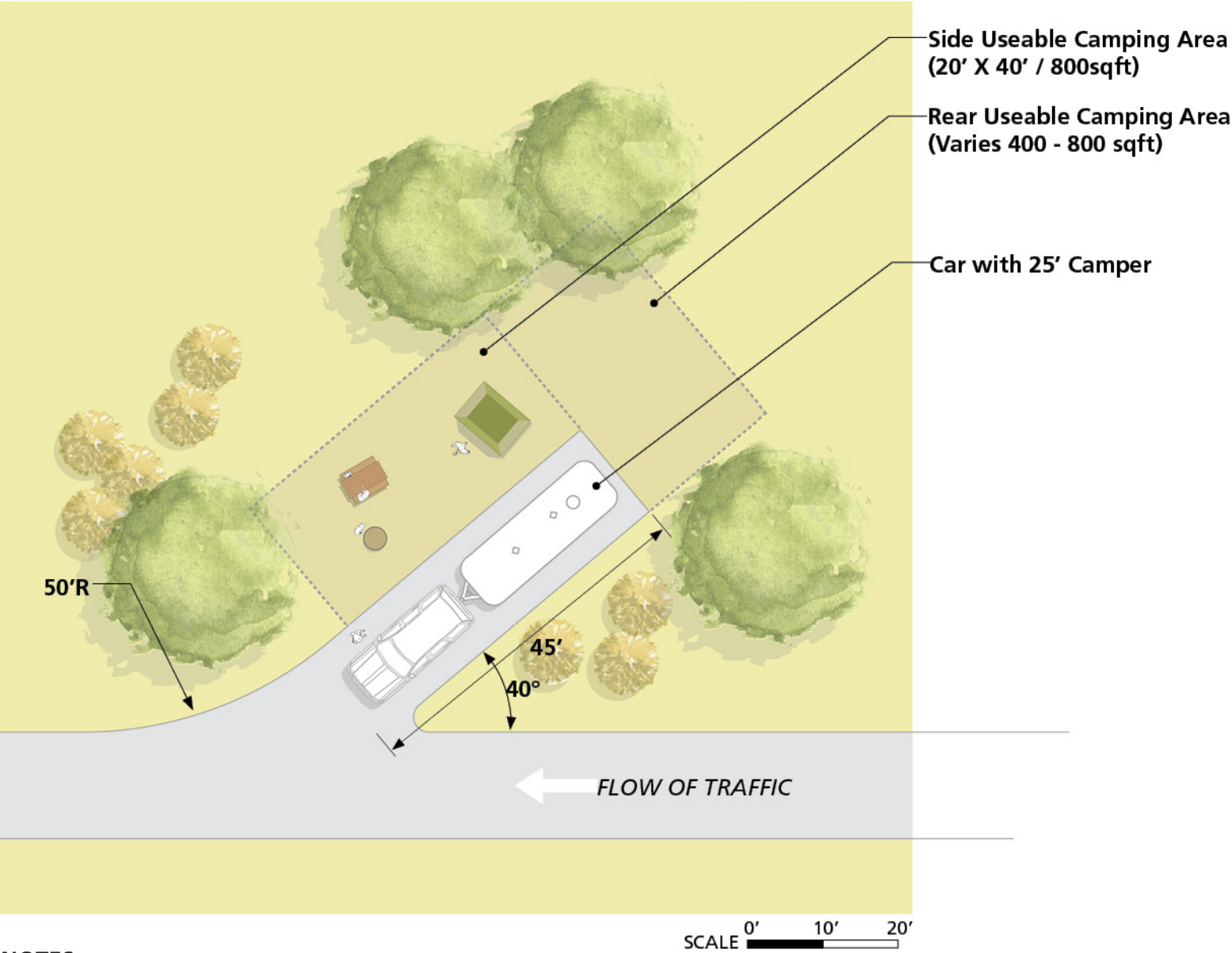


LARGE RV CAMPSITE



- NOTES
- The type of usable camping area present at the site will change from site to site due to differing site conditions
 - Campsites may be located on either side of a one-way road
 - Campsites located on the left hand side of the road within a loop will more likely have a rear usable camping area due to space constraints
 - Present in RV Areas and Mixed-Use Areas

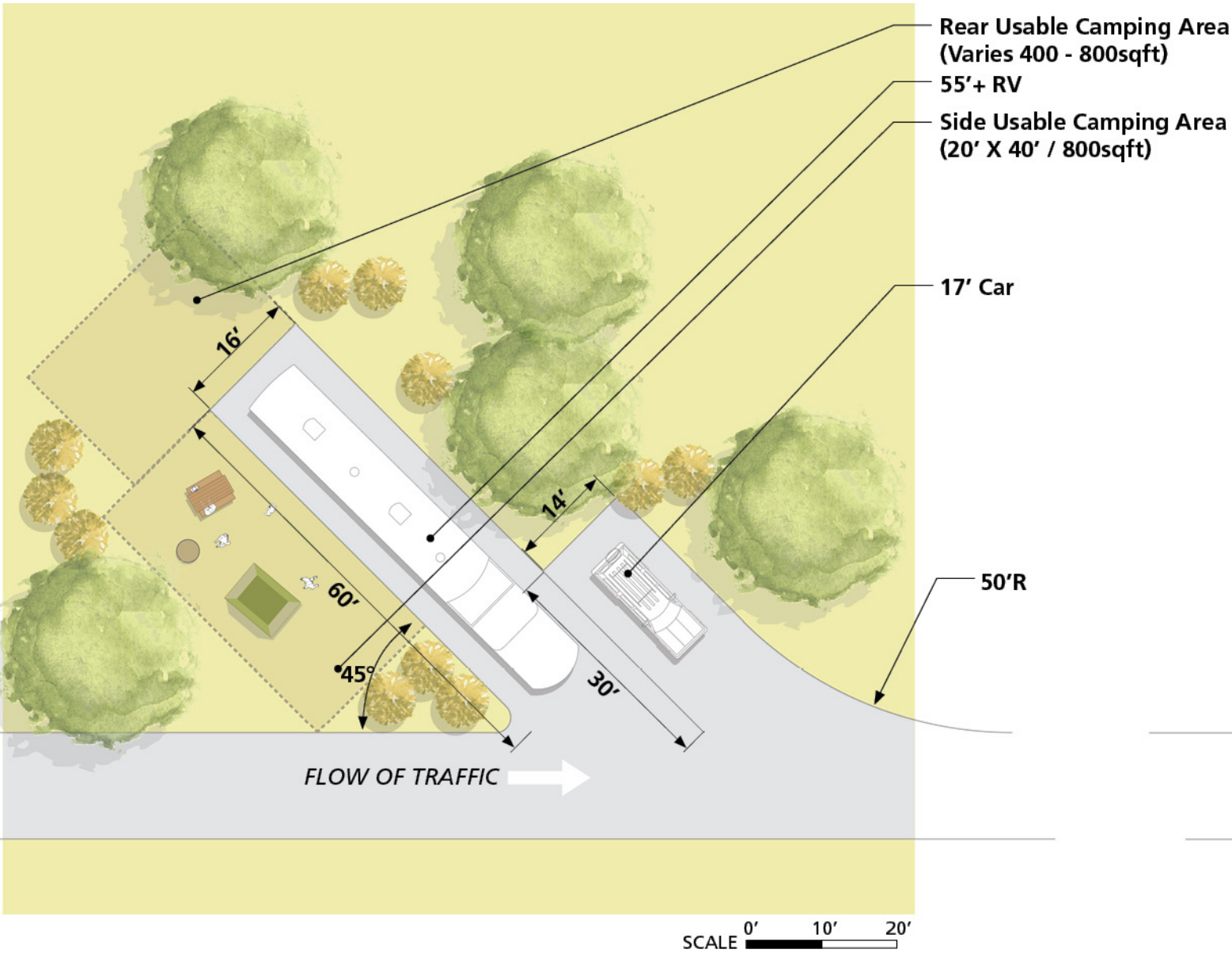
MEDIUM-SMALL TRADITIONAL/TENT CAMPSITE



- NOTES
- The type of useable camping area present at the site will change from site to site due to differing site conditions
 - Campsites may be located on either side of a one-way road
 - Campsites located on the left hand side of the road within a loop will more likely have a rear useable camping area due to space constraints
 - Present in Traditional/Tent Areas and Mixed-Use Areas

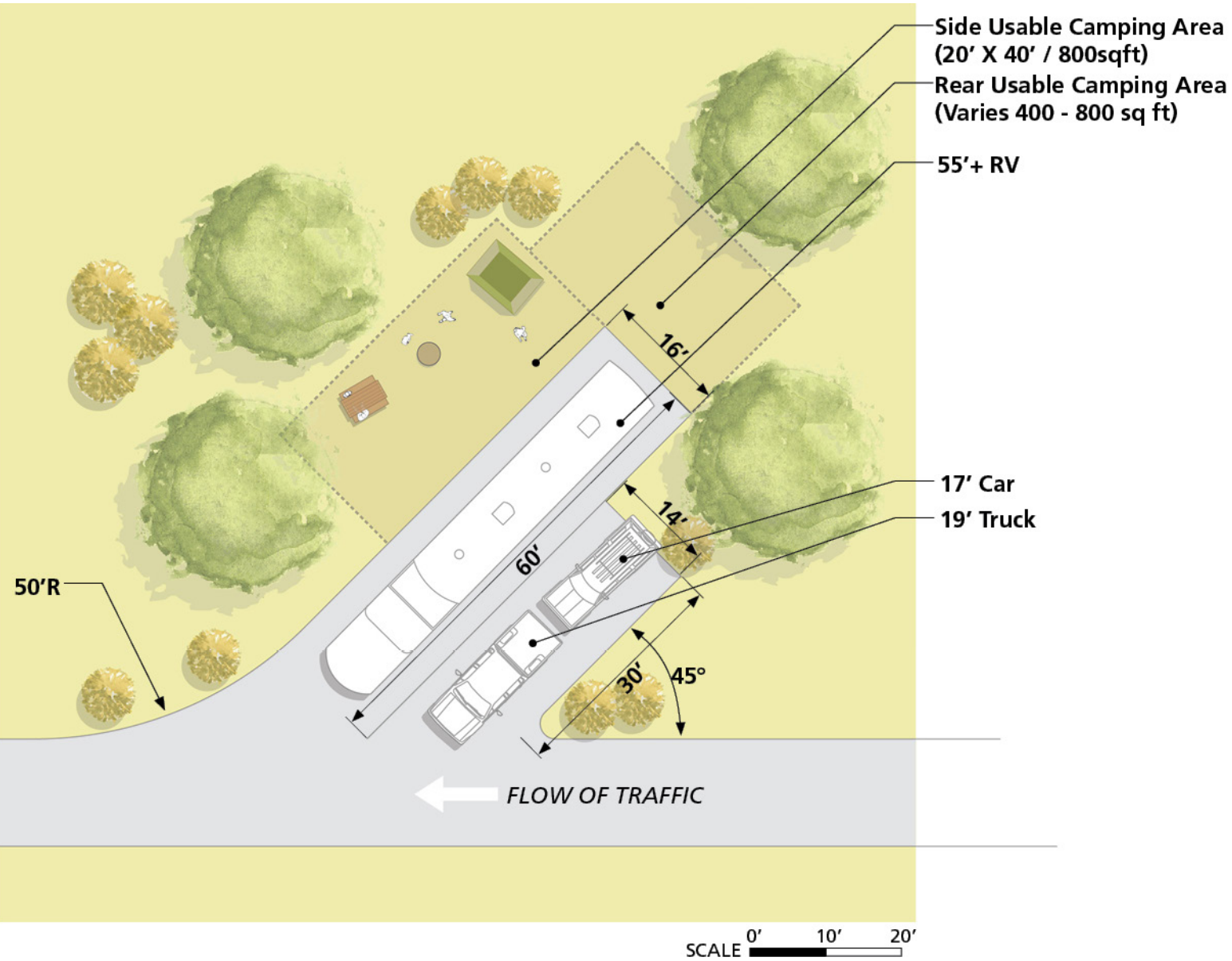


LARGE RV DOUBLE CAMPSITE (LEFT)



- NOTES
- The type of usable camping area present at the site will change from site to site due to differing site conditions
 - Campsites may be located on either side of a one-way road
 - Campsites located on the left hand side of the road within a loop will more likely have a rear usable camping area due to space constraints
 - Double campsites will always have the 60' stall passenger's side located on the exterior of the two stalls for ease of access to the usable camping area
 - Present in RV Areas and Mixed-Use Areas

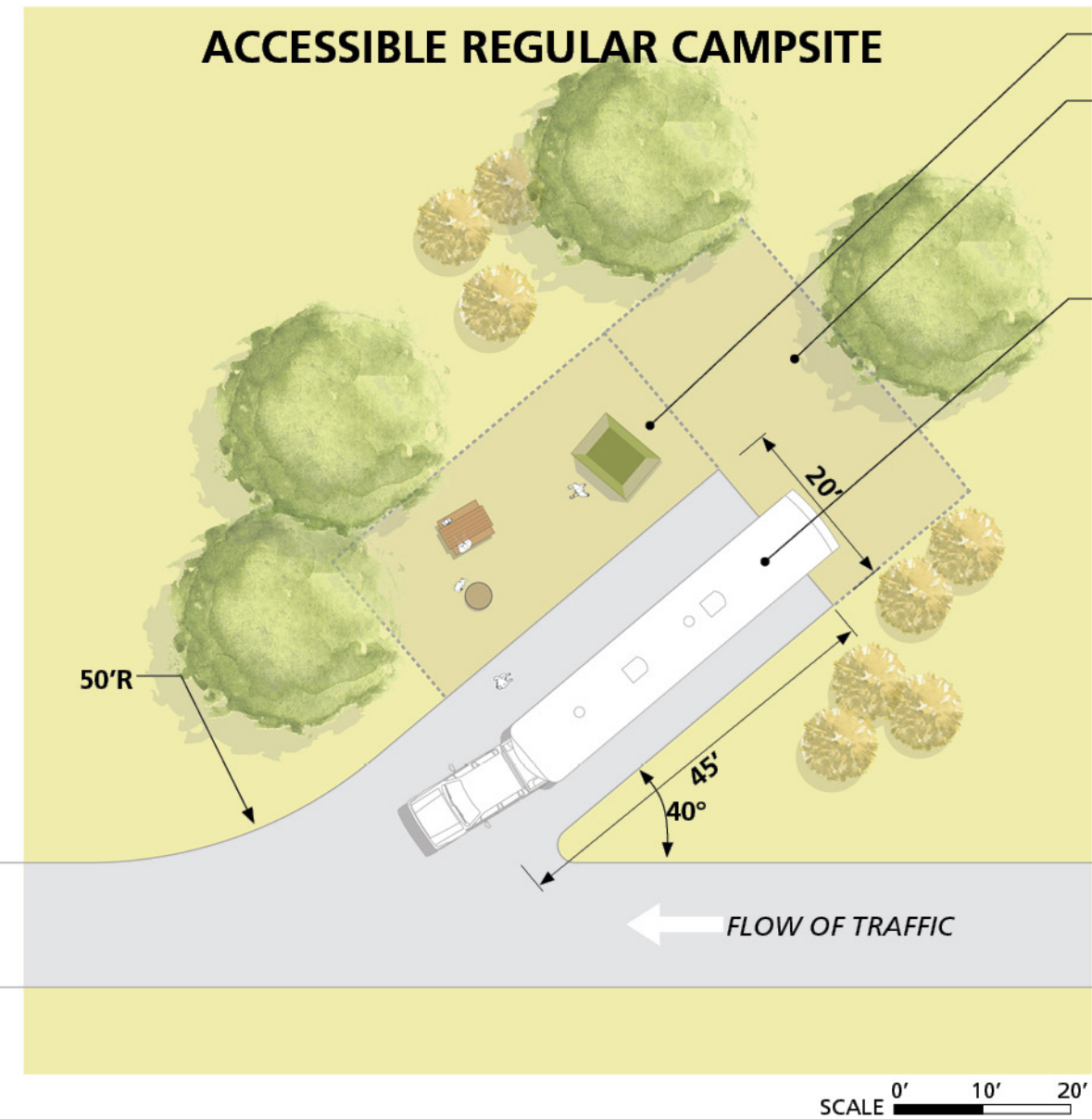
LARGE RV DOUBLE CAMPSITE (RIGHT)



- NOTES
- The type of usable camping area present at the site will change from site to site due to differing site conditions
 - Campsites may be located on either side of a one-way road
 - Campsites located on the left hand side of the road within a loop will more likely have a rear usable camping area due to space constraints
 - Double campsites will always have the 60' stall passenger's side located on the exterior of the two stalls for ease of access to the usable camping area
 - Present in RV Areas and Mixed-Use Areas



EXAMPLE ACCESSIBLE CAMPSITE



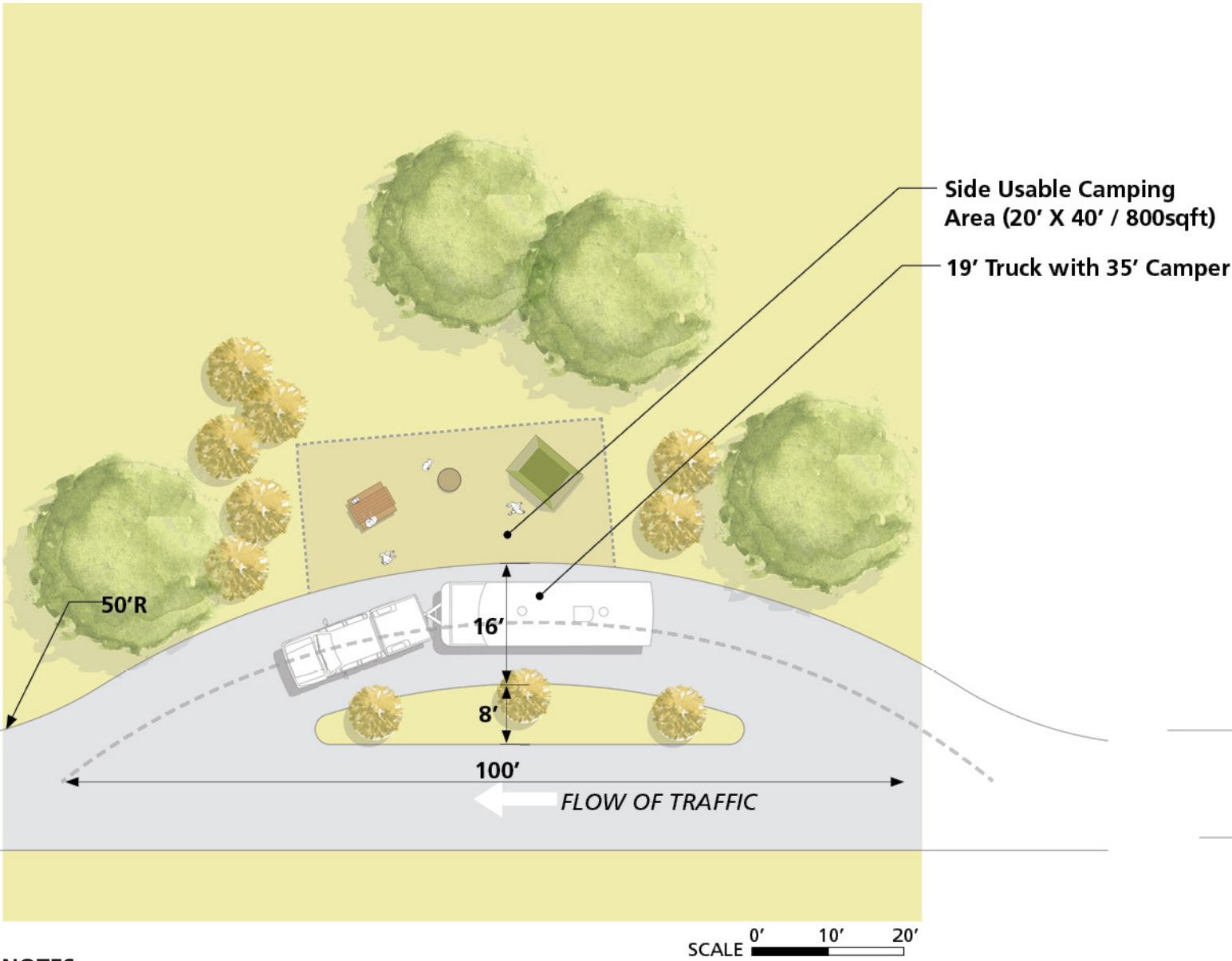
NOTES

- The type of usable camping area present at the site will change from site to site due to differing site conditions
- Campsites may be located on either side of a one-way road
- Campsites located on the left hand side of the road within a loop will more likely have a rear usable camping area due to space constraints
- Accessible campsites should be easily accessible to and from park facilities (restrooms, etc.)
- Present in Traditional/Tent Areas and Mixed-Use Areas



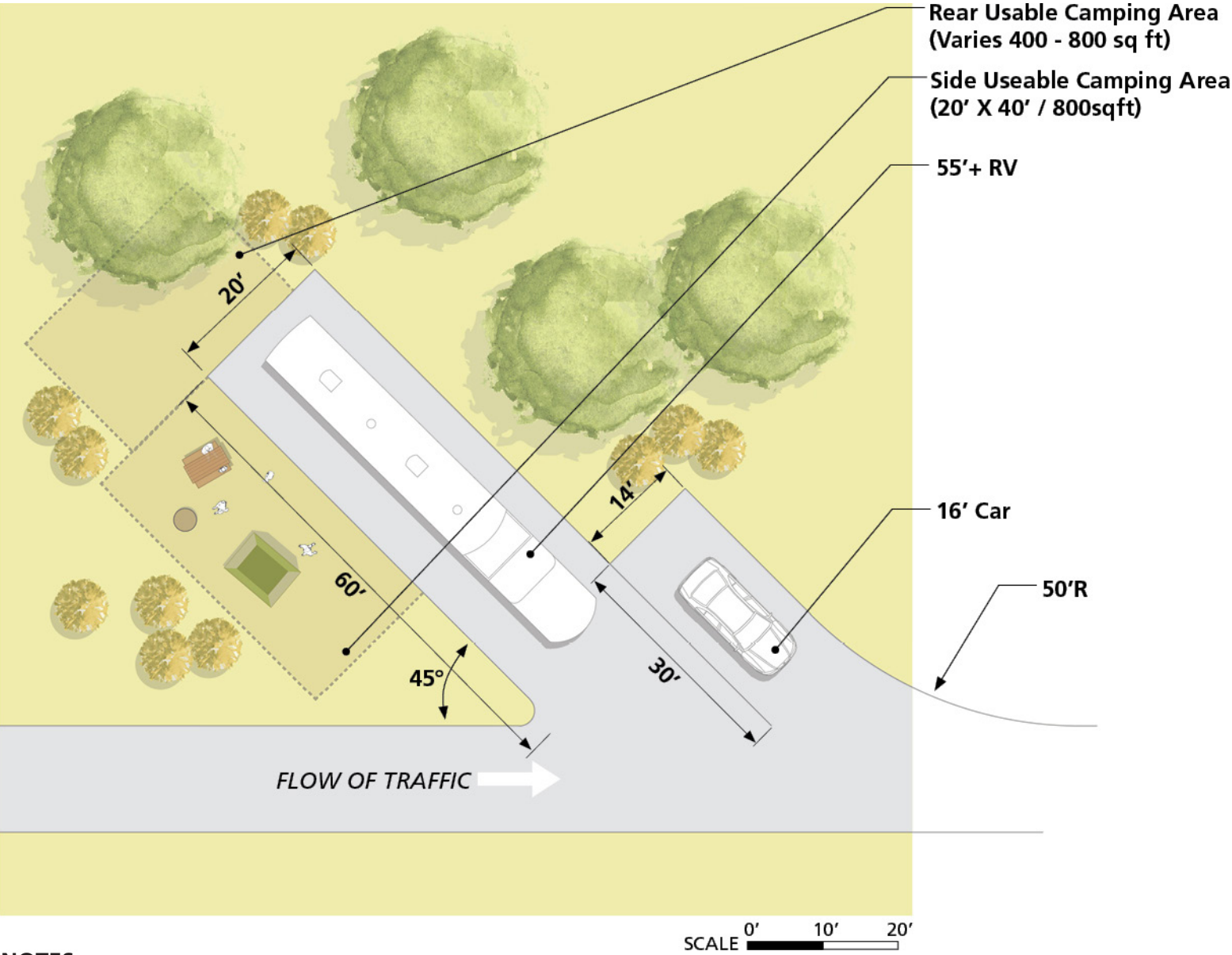


PULL-THROUGH CAMPSITE



- NOTES
- Pull-through campsites will always have a side usable camping area present at the site
 - Pull-through campsites should be located only on the right side of the road as trailer and RV doors open on the right side of the car
 - Present in RV Areas, Mixed-Use Areas, and Traditional/Tent Areas

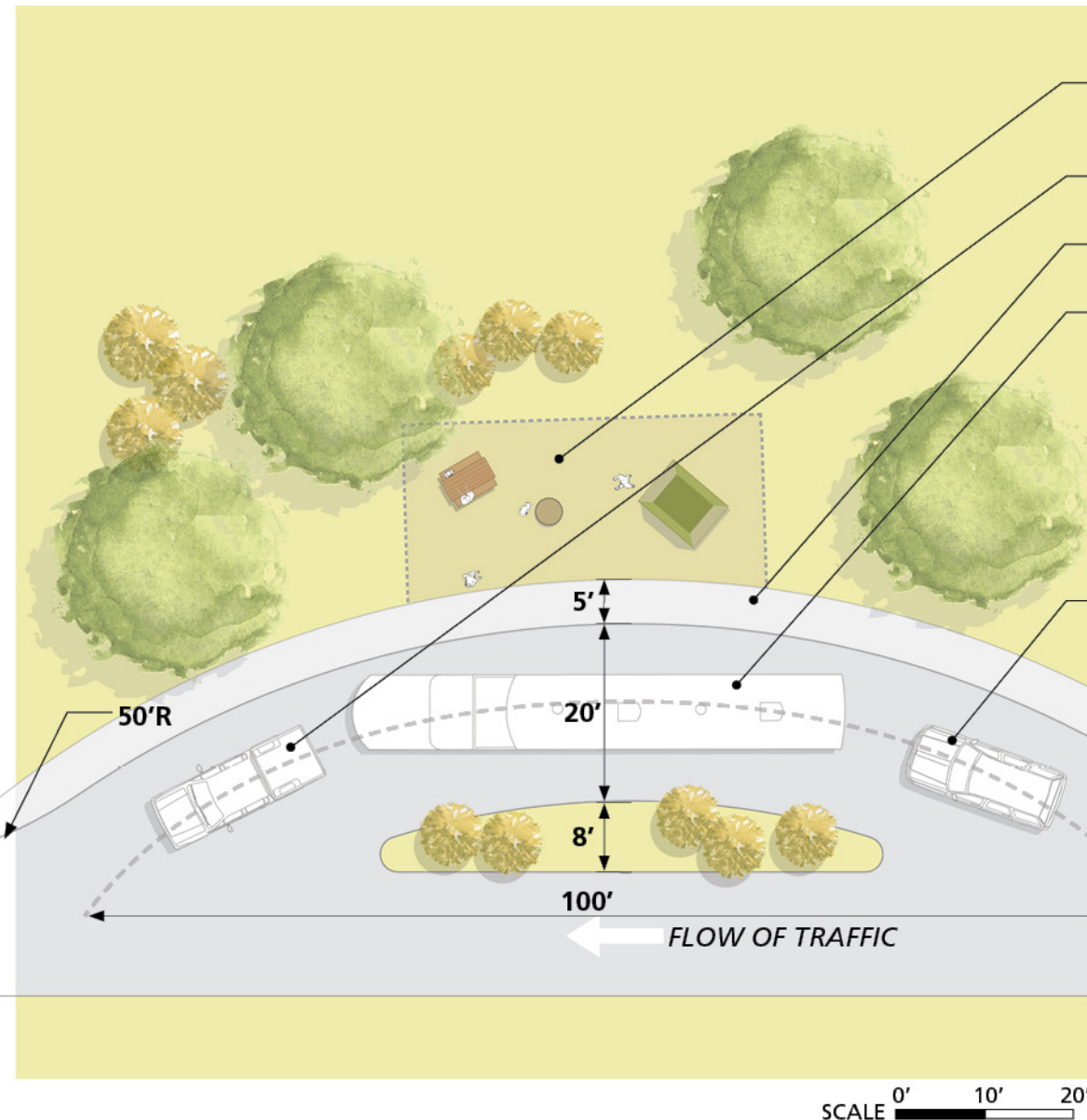
ACCESSIBLE DOUBLE CAMPSITE



- NOTES
- The type of usable camping area present at the site will change from site to site due to differing site conditions
 - Campsites may be located on either side of a one-way road
 - Campsites located on the left hand side of the road within a loop will more likely have a rear usable camping area due to space constraints
 - Double Campsites will always have the 60' stall passenger's side located on the exterior of the two stalls for ease of access to the usable camping area
 - Accessible campsites should be easily accessible to and from park facilities (restrooms, etc.)
 - Present in RV Areas and Mixed-Use Areas



EXAMPLE ACCESSIBLE PULL-THROUGH CAMPSITE



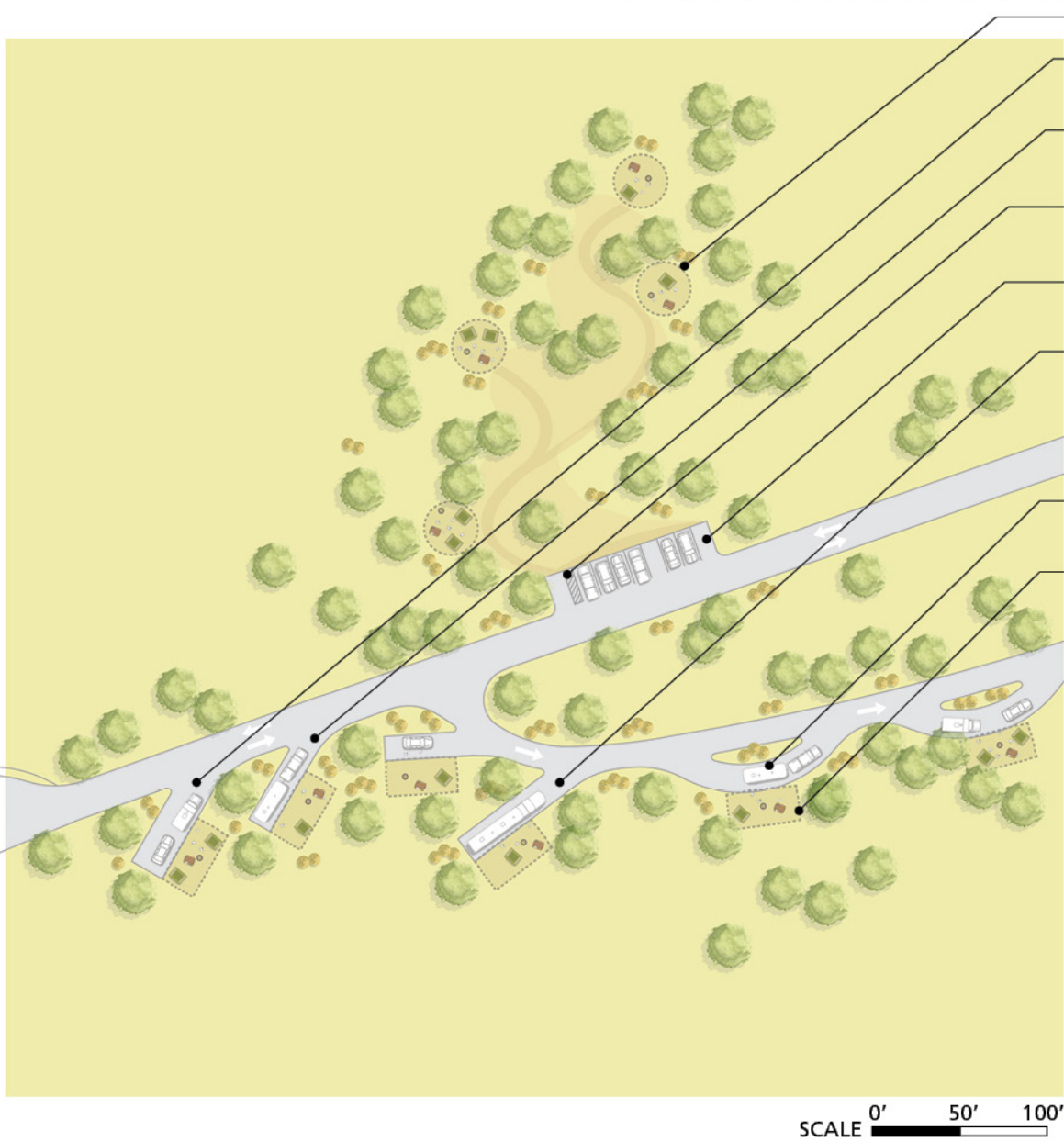
NOTES

- Pull-through campsites will always have a side usable camping area present at the site
- Pull-through campsites should be located only on the right side of the road as trailer and RV doors open on the right side of the car
- Accessible campsites should be easily accessible to and from park facilities (restrooms, etc.)
- Present in RV Areas, Mixed-Use Areas, and Traditional/Tent Areas





EXAMPLE MIXED-USE AREA

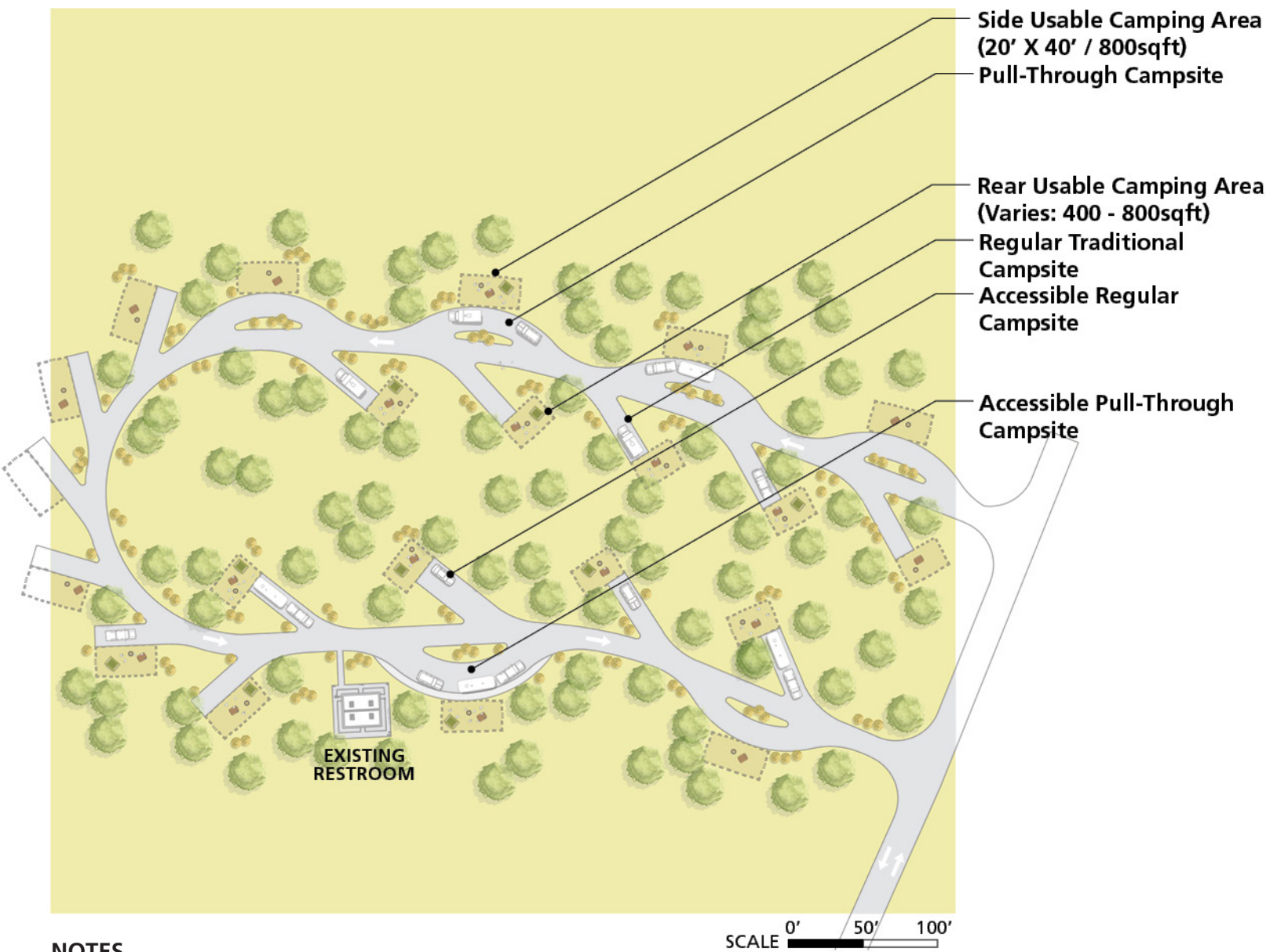


- NOTES**
- All usable camping areas shall have a fire ring, picnic table, and tent pad
 - Campsites located on the left hand side of the road within a loop will more likely have a rear usable camping area due to space constraints
 - Pull-through campsites should be located only on the right side of the road as trailer and RV doors open on the right side of the car
 - Accessible campsites should be easily accessible to and from park facilities (restrooms, etc.)
 - Campsite types accommodated: All





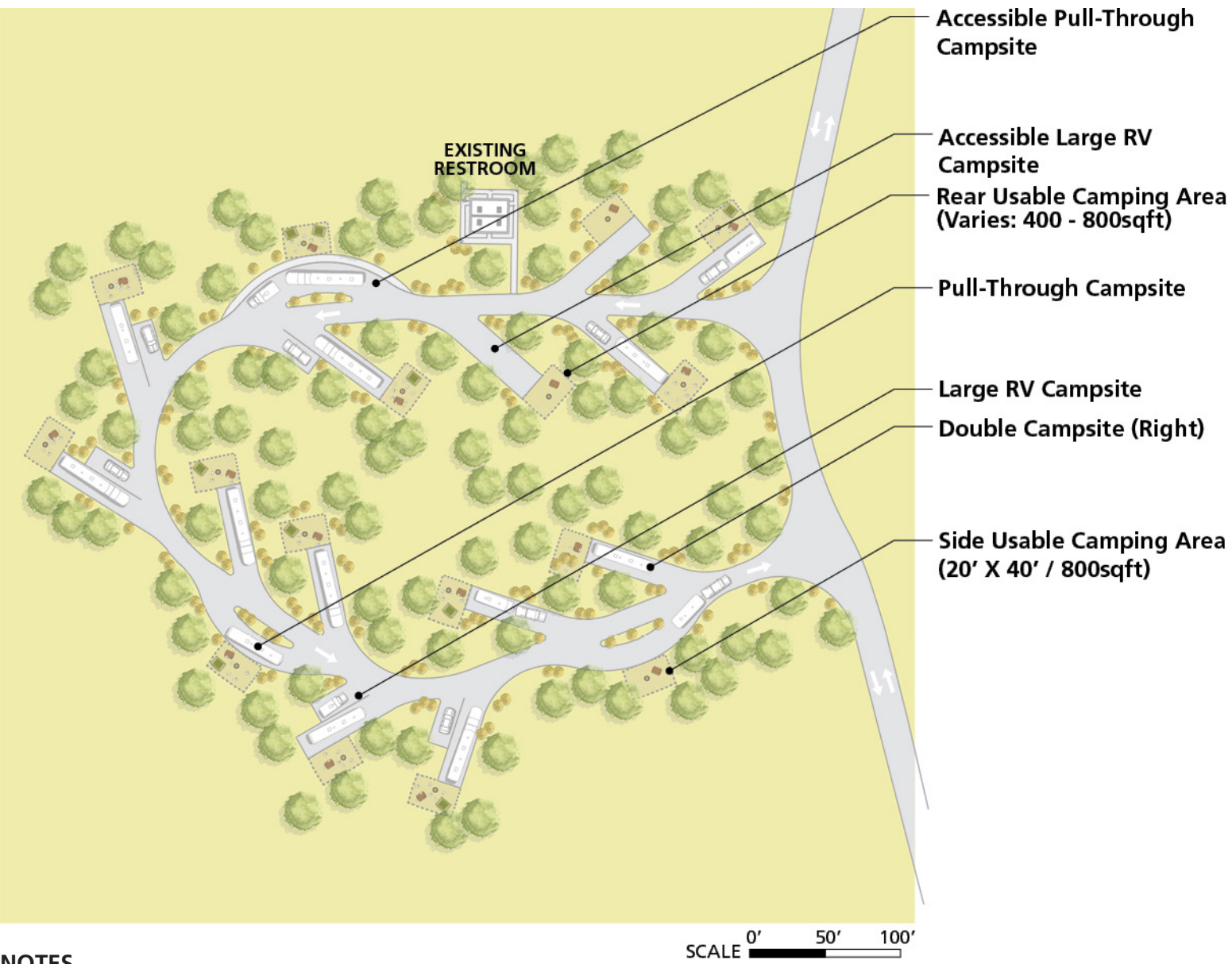
TRADITIONAL/TENT AREA



NOTES

- All usable camping areas shall have a fire ring, picnic table, and tent pad
- Campsites located on the left hand side of the road within a loop will more likely have a rear usable camping area due to space constraints
- Pull-through campsites should be located only on the right side of the road as trailer and RV doors open on the right side of the car
- Accessible campsites should be easily accessible to and from park facilities (restrooms, etc.)
- Campsite types accommodated: Medium-Small Traditional/Tent Campsite, Pull-Through Campsite, and Accessible

RV AREA

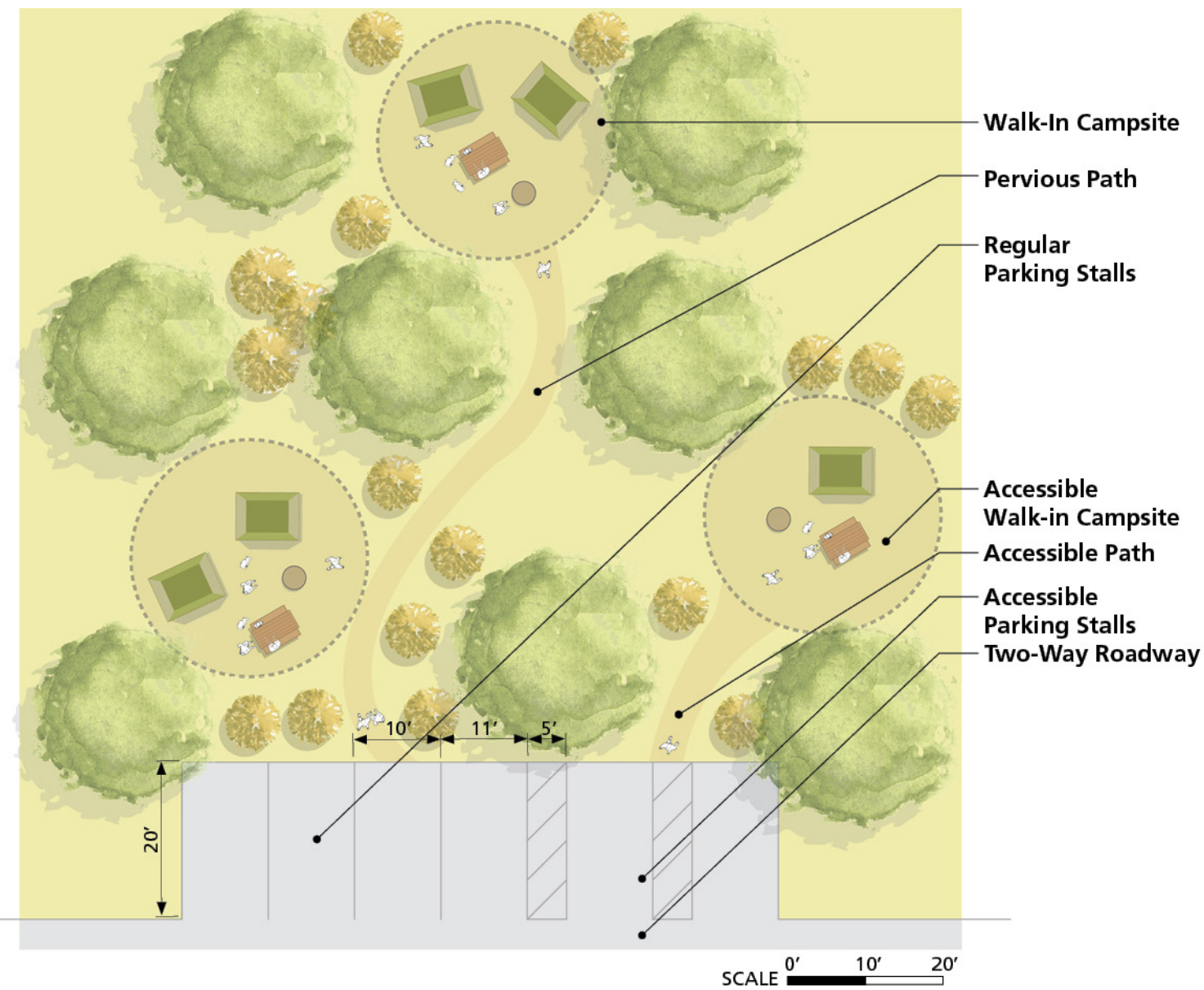


NOTES

- All usable camping areas shall have a fire ring, picnic table, and tent pad
- Campsites located on the left hand side of the road within a loop will more likely have a rear usable camping area due to space constraints
- Pull-through campsites should be located only on the right side of the road as trailer and RV doors open on the right side of the car
- Accessible campsites should be easily accessible to and from park facilities (restrooms, etc.)
- Campsite types accommodated: Large RV Campsite, Large RV Double Campsite, Pull-Through Campsite, and Accessible

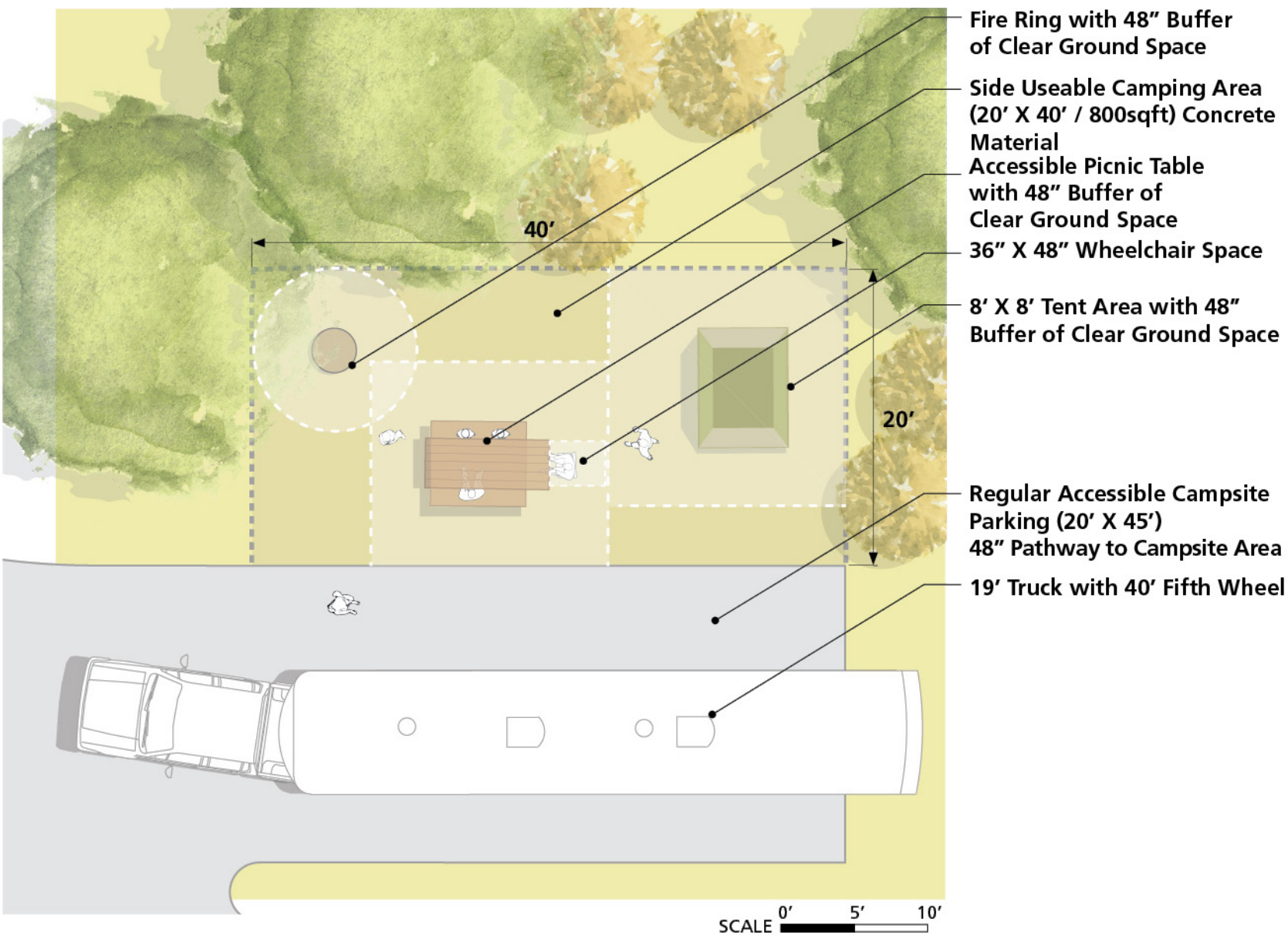


WALK-IN CAMPSITES



- NOTES
- All usable camping areas shall have a fire ring, picnic table, and tent pad
 - Parking shall accommodate for a minimum of one stall per site with one additional accessible stall per area
 - Paths shall be constructed with pervious accessible surface materials
 - Accessible campsites should be easily accessible to and from park facilities (restrooms, accessible parking etc.)
 - Present in Mixed-Use Areas
 - Vehicle types accommodated: Car

ACCESSIBLE USABLE CAMPING AREA



- NOTES
- The type of usable camping area (side or back) present at the site will change from site to site due to differing site conditions
 - Circulation buffers may overlap with one another
 - Accessible campsites should be easily accessible to and from park facilities (restrooms, etc.)
 - Present in Walk-In Campsites, RV Areas, Traditional/Tent Areas, and Mixed-Use Areas