



GLOBAL WAR ON TERRORISM

MEMORIAL FOUNDATIONSM

TABLE OF CONTENTS

Site Selection

- I. Introduction
- II. Context Maps of National Mall
- III. Potential Sites Context Map
 - a. Potential Site 1 - Constitution Gardens adjacent to Constitution Ave, NW
 - b. Potential Site 2 - JFK Hockey Fields
 - c. Potential Site 3 - West Potomac Park
- IV. Site Comparison
- V. Appendix
 - a. Questionnaire
 - b. Documents Referenced
 - c. Team

INTRODUCTION

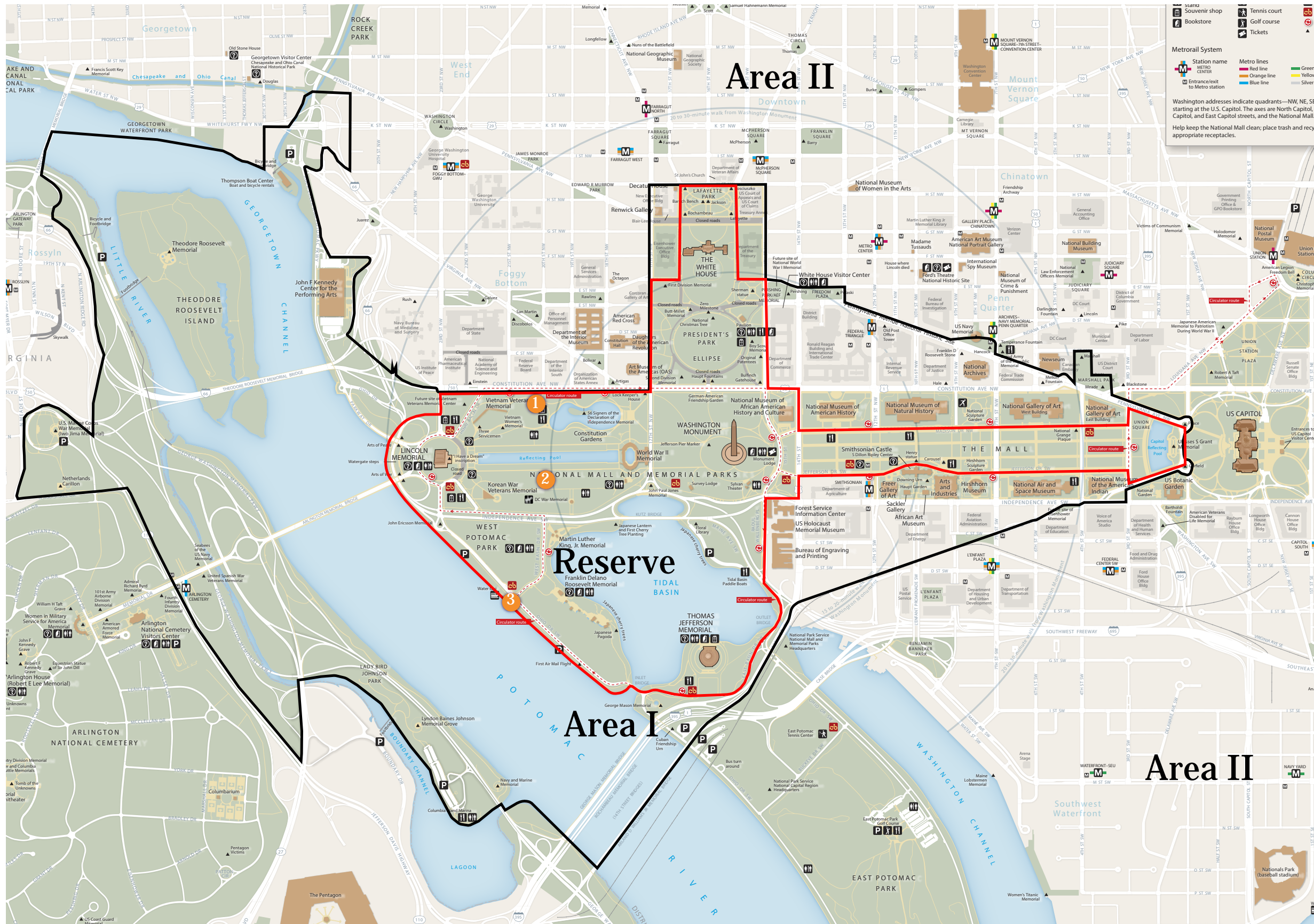
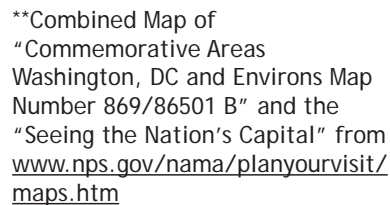
Based on its vision and guiding principles, the Foundation developed its program of requirements for the Memorial following an extensive, inclusive and interactive outreach to a variety of stakeholders. These groups included the Foundation Board, leadership ambassadors, veterans, various ranks of active-duty military, friends & family of the military (including Gold Star & Blue Star families) and a sampling of the national community.

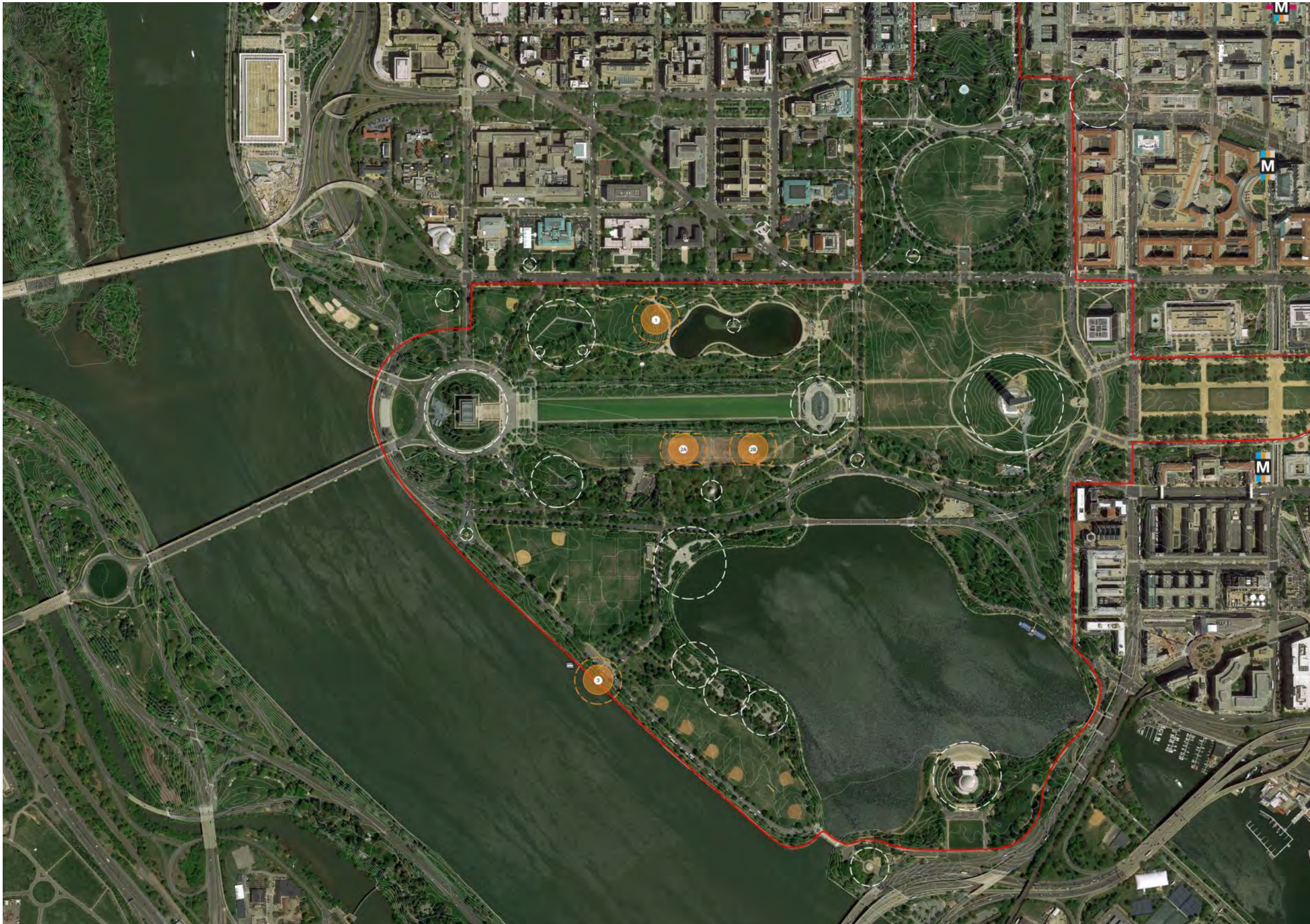
A twenty-question survey, with both qualitative and quantitative queries, was submitted to each of these participating individuals in order to generate responses, to be held in confidence. Those not familiar with the Foundation's memorial initiative participated in group work sessions that were facilitated by use of a precedent workbook highlighting existing memorial sites on and adjacent to the National Mall as well as synopses of other relevant memorials.

The responses to the survey questionnaire were thoughtful and heartfelt. Many respondents were highly appreciative of the effort to create a GWOT memorial and to solicit opinions on how it should be conceived. When a sufficient number of participants speaking for the varied stakeholders was achieved, the data gathering was determined to be complete. The Memorial program was extracted from the data collected.

While opinions did vary in emphasis, there was a great deal of commonality and shared sentiment. In particular, there was significant agreement that the extent and duration of the sacrifices related to the GWOT needed to be prominently memorialized in The Reserve alongside other major conflicts. There was also major agreement that the Memorial should be highly accessible, a place conducive to contemplation & remembrance, appropriately lit at night; and preferably, including interpretive content and available support facilities. These base criteria would require a site area of approximately 2.5 acres.

After an extensive analysis of eight potential sites (including daytime and nighttime site visits) within the Reserve and adjacent to it, three sites were chosen as best meeting the program criteria. These site recommendations are the basis of the current legislation pending in the House of Representatives.

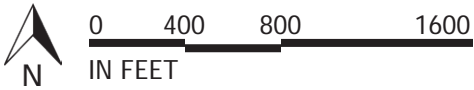




GLOBAL WAR
ON TERRORISM
MEMORIAL FOUNDATION.

POTENTIAL SITES
CONTEXT MAP

- Existing Monument
Zone of Influence
- 1 Acre Site Area
- 2.5 Acre Site Area
- Reserve Boundary Line
- Area I Boundary Line





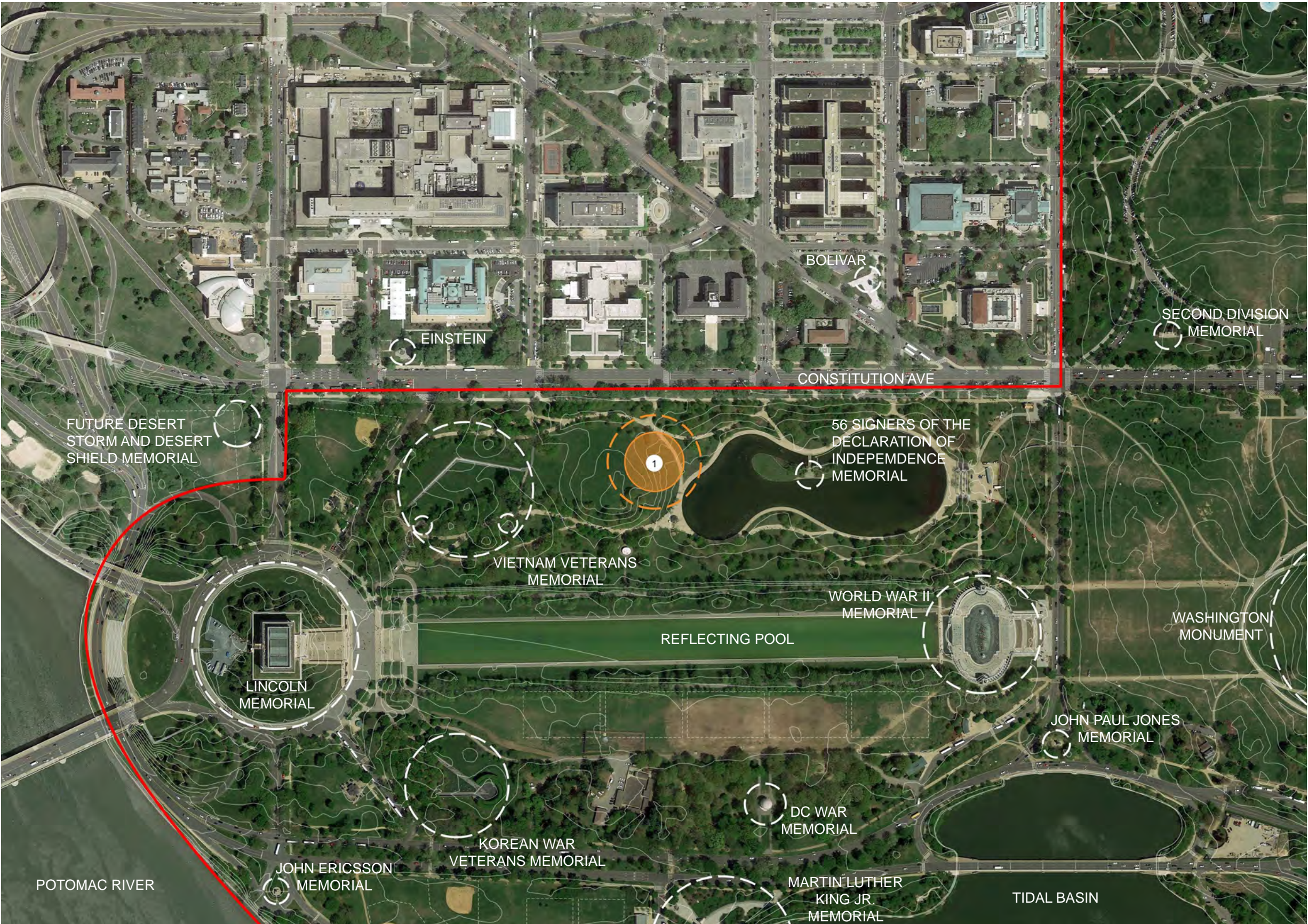
GLOBAL WAR
ON TERRORISM
MEMORIAL FOUNDATION.

POTENTIAL SITE 1
CONSTITUTION GARDENS





POTENTIAL SITE 1
CONSTITUTION GARDENS



- Existing Monument Zone of Influence
- 1 Acre Site Area
- 2.5 Acre Site Area
- Reserve Boundary Line
- Area I Boundary Line





Existing Monument Zone of Influence

1 Acre Site Area

2.5 Acre Site Area

Pedestrian Traffic

Vehicular Traffic



Site Description Summary

This site is located in the northwestern portion of Constitution Gardens, next to a knoll overlooking the pond. The site has been deliberately configured to avoid imposing on the “zone of influence” viewshed of The Vietnam Veterans Memorial directly to the west. The topography gently slopes toward the pond from Constitution Avenue. Accessible directly from Constitution Avenue, the site is near the 56 Signers Memorial, Vietnam Veterans and Women’s Memorials, and within easy walking distance of the Lincoln Memorial, Reflecting Pool, Rainbow Pool, the World War II Memorial and the future Desert Storm Memorial. Views of the Washington Monument are prominent, especially at night.

Prominence / Visibility

This site can be readily seen through a proposed opening in the existing thinly wooded tree buffer that separates it from the bustle of Constitution Avenue. Within Constitution Gardens, it will be most prominent along the western shore of the pond and along the curvilinear paths that connect it to the Vietnam Veterans Memorial to the west and the 56 Signers Memorial, the Gate Keeper’s House and the WW II Memorial to the east.

Reflection / Contemplation

In the context of the naturalistic environment of Constitution Gardens, and being removed from the bustle of Constitution Avenue, this site offers excellent opportunities for contemplation and reflection. The proximity to the pond and the visual presence of the Washington Monument greatly increases this potential.

Commemorative Opportunities

This portion of Constitution Gardens offers unique attributes for a GWOT Memorial. With room for adequate buffers to avoid encroachment, this site sits in a sweet spot between the Vietnam Veterans Memorial and the 56 Signers Memorial. The adjacency to the pond offers opportunities to integrate water into the design. The existing topography may allow for an interpretive component to be built into the knoll.

Urban Design Considerations

The greatest opportunities and challenges lie in configuring the GWOT Memorial to align with the 20th Street axis in a manner that enhances the overall ambiance of Constitution Gardens. This will involve respecting the intent of the existing topographical contours, helping to making repairs and improvements to the pond, maintaining a respectful separation and screening from the 56 Signers Memorial, and staying out of the viewshed of the Vietnam Veterans Memorial. Also, the proposed entry from the 20th Street & Constitution Avenue intersection should be factored into the design.

Accessibility

This site is readily accessed by pedestrians from Constitution Avenue and the pathways within Constitution Gardens. Although dropoff/pickup can occur at any point along Constitution Avenue, a layby near 20th Street intersection would be highly recommended, especially for rush hour periods when all lanes are reserved for traffic. Several Circulator bus stops are within a block or two in either direction. Metrorail stops at Foggy Bottom and Farragut West are each approximately a mile to the north.

Environmental Considerations

Prior to the development of Washington D.C, the Potomac River extended into the city to approximately Constitution Avenue to the north and 17th Street to the east. Soils dredged from the Potomac River and imported from other sites were deposited in the area of the Mall located west of the Washington Monument, extending from Constitution Avenue southward to the Tidal Basin. Construction of a new memorial on Site 1 should anticipate deep foundations or piling to support new structures on the site to prevent long term settling.

During World War II, Sites 1 and 2 were the home of military facilities installed prior to the opening of the Pentagon. Buried remnants of these facilities exist on both sides of the Reflecting Pool and construction of a new memorial on either site should anticipate their removal and disposal.

Infrastructure

Utilities for the proposed site are limited but nearby. A potable water line extended from Constitution Avenue to the Lincoln Memorial Reflecting Pool crosses the proposed site and sanitary sewer is available in Constitution Avenue. Connection to the sanitary sewer supporting the restroom located to the south of Site 1 is a possibility but improvements to the line should be anticipated.

Power for the site would require extension of existing systems located in Constitution Avenue. A communication system located on the north side of the Lincoln Memorial Reflecting Pool provides the nearest connection point for Site 1.

Thematic Nexus

This site in Constitution Gardens offers multiple opportunities for thematic connections to nearby landmarks, organizations, and institutions. The following represents a summary of these connections. 20th Century War Memorials - The GWOT Memorial is the most recent in a line of memorials commemorating the United States’ involvement in conflicts world-wide. These memorials are generally located within the western end of the National Mall, including the District of Columbia World War I Memorial, the World War II Memorial, the Korean War Veterans Memorial, the Vietnam Veterans Memorial, and the Desert Storm and Desert Shield Memorial (underway).

Organization of American States (OAS) - The OAS is an organization dedicated to representing the unified interests of states in the western hemisphere. The organization has developed comprehensive policies to work together closely in order to combat the threat of terrorism in the Hemisphere. The GWOT Memorial would be consistent with the OAS mission.

Leadership Commemorative Works - This site sits within view of multiple commemorative works dedicated to honoring the men who helped create and preserve the United States of America, including the Lincoln Memorial, the Washington Monument, and the Signers of the Declaration of Independence. As a means to recognize America’s leadership role in countering terrorism, the GWOT Memorial would be compatible with these other memorials.

Constitution Gardens - The site’s location within Constitution Gardens would serve as a reminder of the nation’s principles that the GWOT serves to protect.



GLOBAL WAR
ON TERRORISM
MEMORIAL FOUNDATION.

POTENTIAL SITE 1
CONSTITUTION GARDENS

POTENTIAL SITE 1

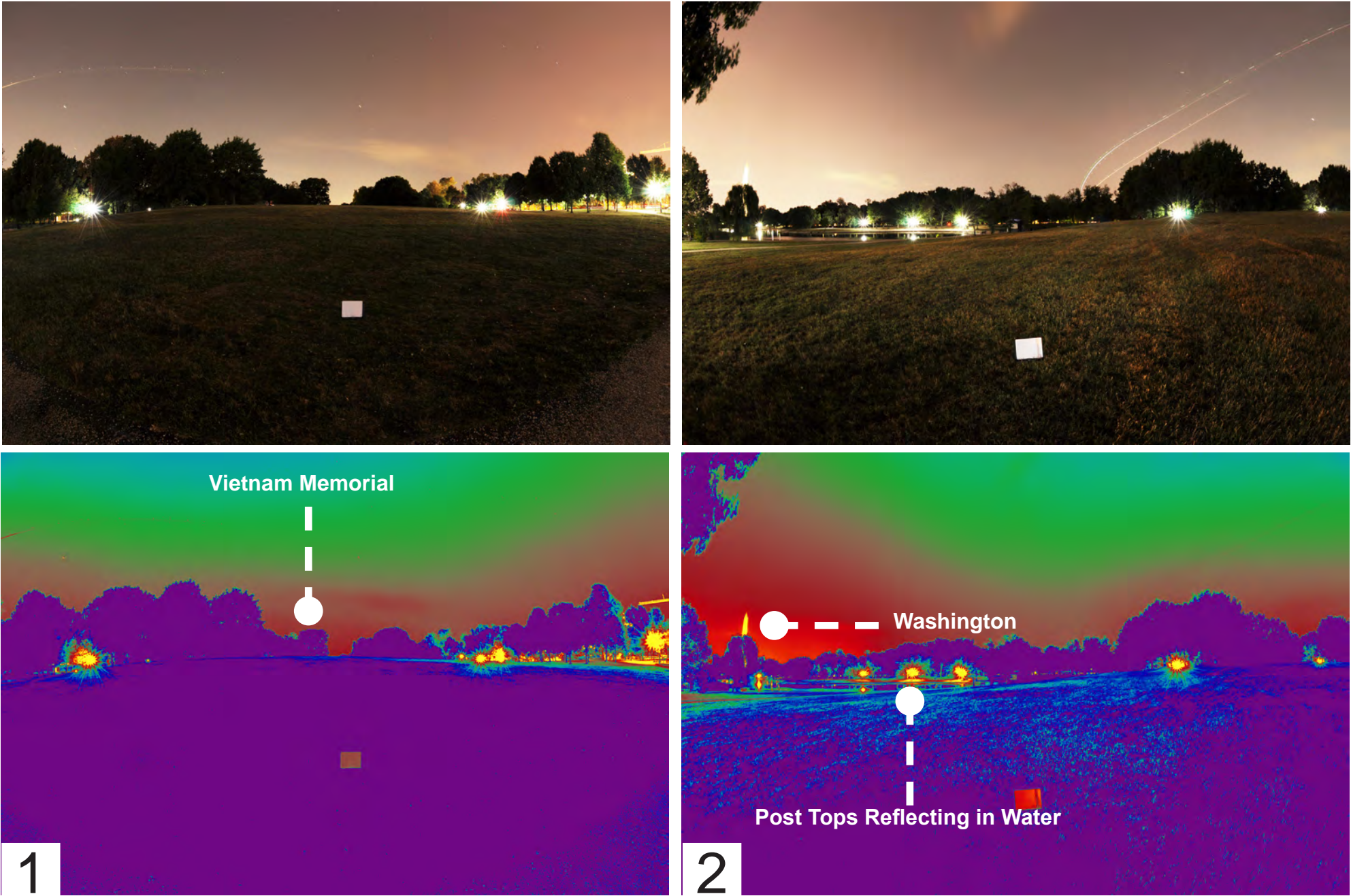
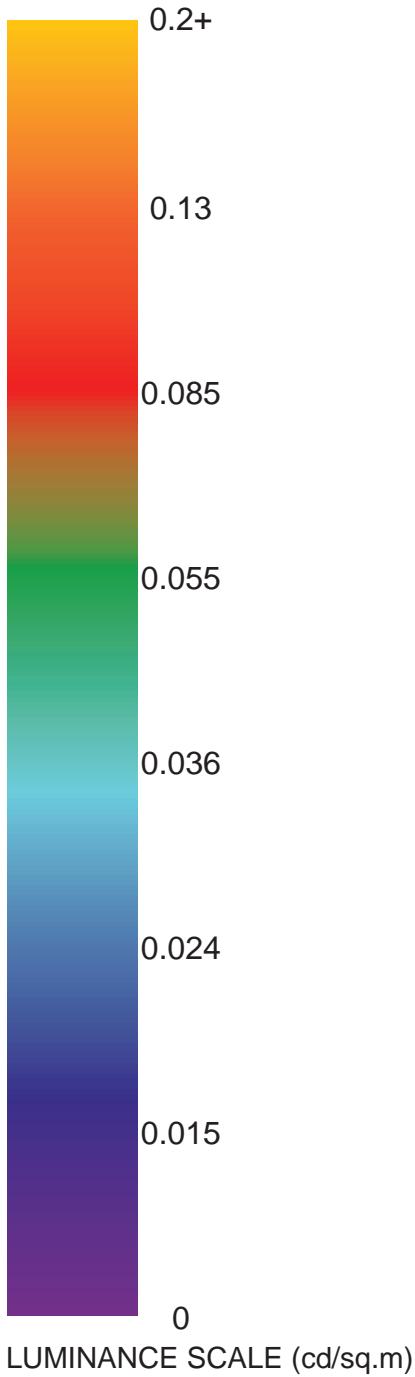
CONSTITUTION GARDENS

Existing Site Lighting Conditions



Site 1 has minimal to no direct glare challenges and all adjacent street traffic is distant from the site and blocked by trees. The topography provides a buffer from the Vietnam memorial, so there is no visual impact from the existing memorial. The standard acorn post top poles reflect in the water basin east of the site, creating a tranquil reflective experience. The Washington Monument stands tall in the distance in the eastern view of the site, but does not have impact on ambient brightness or measured light levels on site. This should be taken into account when orienting the monument and memorial experience.

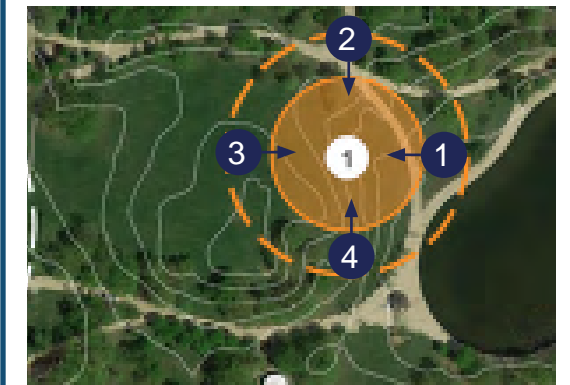
HDR Imaging and Observations



POTENTIAL SITE 1
CONSTITUTION GARDENS

Existing Site Lighting Conditions

Legend



Pros and Cons

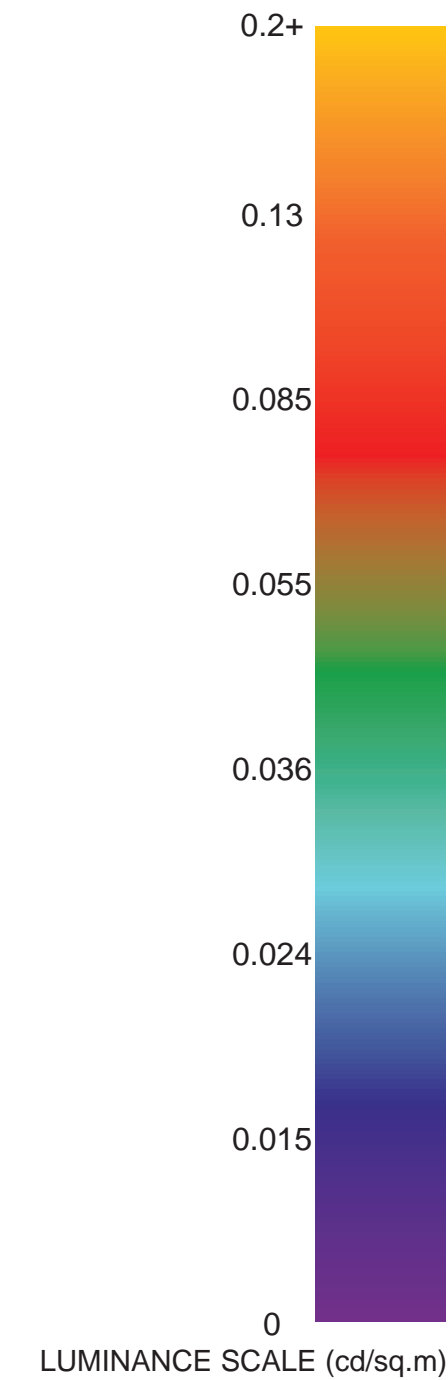
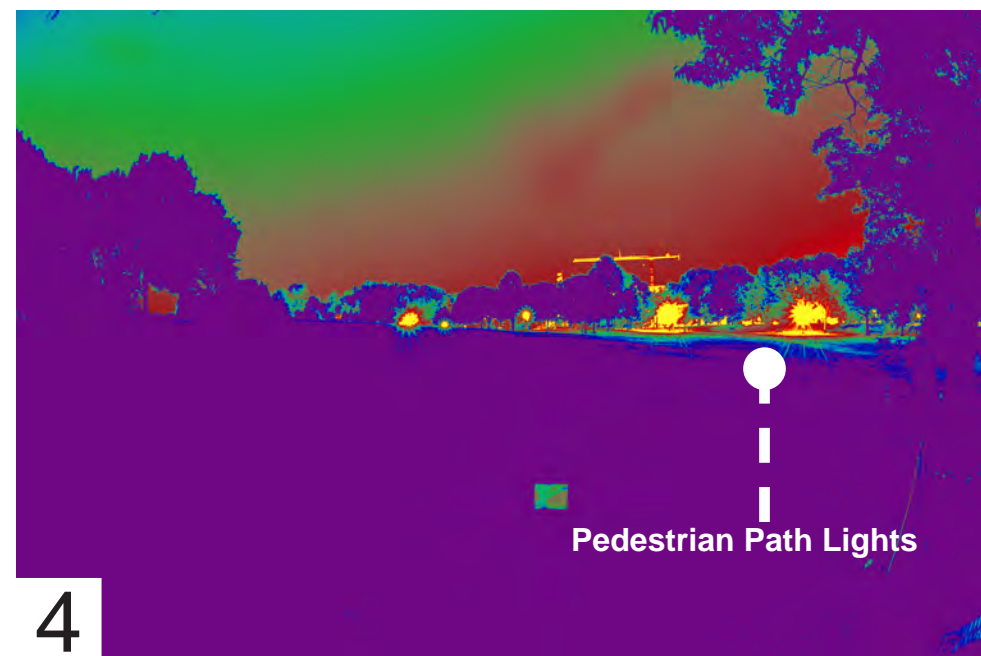
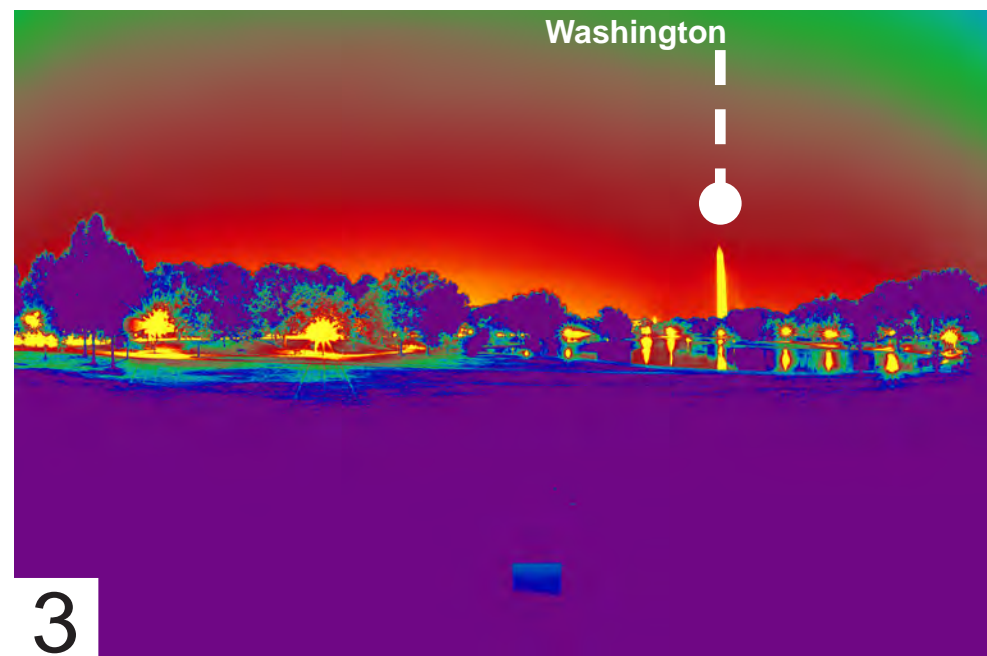
PROS:

- No visual impact from Vietnam Memorial
- Minimal to no immediate glare from car traffic or pedestrian lights
- Nearby water provides opportunity for reflection

CONS:

- None

HDR Imaging and Observations





GLOBAL WAR
ON TERRORISM
MEMORIAL FOUNDATION.

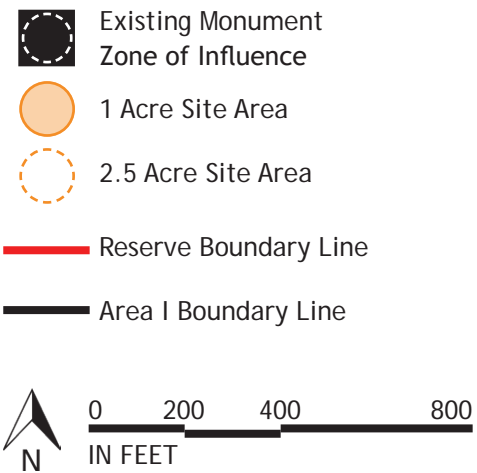
POTENTIAL SITE 2 JFK HOCKEY FIELDS





GLOBAL WAR
ON TERRORISM
MEMORIAL FOUNDATION.

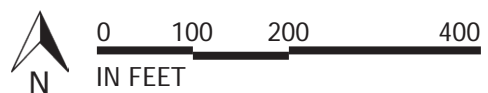
POTENTIAL SITE 2
JFK HOCKEY FIELDS





POTENTIAL SITE 2
JFK HOCKEY FIELDS

- Existing Monument Zone of Influence
- 1 Acre Site Area
- 2.5 Acre Site Area
- Pedestrian Traffic
- Vehicular Traffic



Site Description Summary

These two site alternates, among the flat JFK Hockey Fields, are situated between Ash Road and the pedestrian path south of the Reflecting Pool. Option 2A locates the GWOT Memorial, midway between the soon-to-be-renovated U.S. Park Police Stables and the DC World War I Memorial. Alternate 2B opts for a location to the east of the DC World War I Memorial nearer to the World War II Memorial. In either alternate, it is within close walking distance to both The Korean War Veterans Memorial, Lincoln Memorial and the World War II Memorial with easy access across Independence Avenue to the MLK and FDR Memorials.

Prominence / Visibility

Since it is situated in an extensive open area along the Reflecting Pool, within sight of both the Lincoln and WW II Memorials, it will be highly visible from both sides of the Reflecting Pool. However, Ash Woods to the south completely hides either site alternate from view along Independence Avenue.

Reflection / Contemplation

Adjacent to the Reflecting Pool and shielded from the vehicular streets, either alternate is well positioned to foster a setting for contemplation, especially at night. However, within the context of the open and flat recreational fields environment, this may be problematic without adequate landscape and acoustic buffering. Ambient traffic noise will be minimal, although intermittent airplane noise is an increasingly jarring factor the closer the location is to the river.

Commemorative Opportunities

This site has the potential to accommodate a memorial of limited size and visibility. The proximity of this location to the Reflecting Pool and other memorials would complement the existing venues and add to existing synergy. However, these same conditions bring significant constraints to maintain the historic character of this part of the Mall, as well as challenges, with respect to the existing vistas and nearby memorials.

Urban Design Considerations

Given the strategic location between significant memorials on the western end of the monumental core and sightlines to the Lincoln and World War II Memorials, this site offers great potential. The proximity of the Reflecting Pool offers opportunities for incorporating water in the design. However, this same proximity and existing openness will require great care, and likely a lower profile, to avoid interfering with iconic east-west views along the Reflecting Pool between the Lincoln Memorial and World War II Memorial, as well as the adjacent uses.

Accessibility

This site has very limited public transit and vehicular access opportunities. The closest Circulator bus access would be from West Potomac Park near the MLK Memorial. Limited parking spaces would be found in that same general area. Although there is an existing pedestrian path, there is no vehicular access at all from Independence Avenue, even for the Park Police Stables. A drop off/pickup area would need to be created. Metrorail is more than one mile away to the north.

Environmental Considerations

Prior to the development of Washington D.C, the Potomac River extended into the city to approximately Constitution Avenue to the north and 17th Street to the east. Soils dredged from the Potomac River and imported from other sites were deposited in the area of the Mall located west of the Washington Monument, extending from Constitution Avenue southward to the Tidal Basin. Construction of a new memorial on Site 2 should anticipate deep foundations or piling to support new structures on the site to prevent long term settling.

During World War II, Sites 1 and 2 were the home of military facilities installed prior to the opening of the Pentagon. Buried remnants of these facilities exist on both sides of the Reflecting Pool and construction of a new memorial on either site should anticipate their removal and disposal.

Infrastructure

Potable water and sanitary sewer systems supporting the Lincoln Memorial Reflecting Pool water treatment facility and the US Park Police operation, located to the south of Site 2, can be extended to provide services to a new memorial proposed for Site 2. Location of a new memorial will need to be properly located to avoid impacting underground facilities that cross the JFK Hockey field from the treatment facility to the Lincoln Memorial Reflecting Pool to the north. An existing potable water line that runs parallel with the pedestrian path, located to the south of the site, will need to be avoided or relocated with any new memorial construction.

Power is readily available to the site through the normal extension of high voltage power installed for the new water treatment facility that runs parallel with the pedestrian path. The communication systems proposed for the upgrade of the US Park Police facility should be a possible source of fiber and telephone facilities for a new memorial.

Thematic Nexus

This site along Ash Road offers multiple opportunities for thematic connections to nearby landmarks, organizations, and institutions. The following represents a summary of these connections.

20th Century War Memorials - The GWOT Memorial is the most recent in a line of memorials commemorating the United States’ involvement in conflicts world-wide. These memorials are generally located within the western end of the National Mall, including the District of Columbia World War I Memorial, the World War II Memorial, the Korean War Veterans Memorial, the Vietnam Veterans Memorial, and the Desert Storm and Desert Shield Memorial (underway).

Leadership Commemorative Works - This site sits within view of multiple commemorative works dedicated to honoring the men and women who helped create and preserve the United States of America, including the Lincoln Memorial, the Washington Monument, and the Signers of the Declaration of Independence. As a means to recognize America’s leadership role in countering terrorism, the GWOT Memorial would be compatible with these other memorials.

U.S. Park Police Stables - The site’s location adjacent to the U.S. Park Police Stables would help recognize the efforts of law enforcement to prevent terrorist activities domestically.

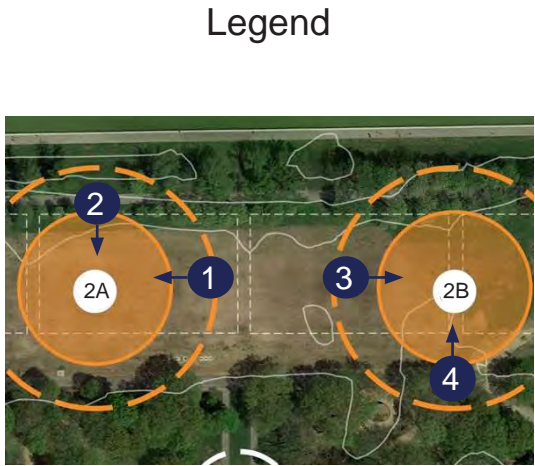


GLOBAL WAR
ON TERRORISM
MEMORIAL FOUNDATION.

POTENTIAL SITE 2
JFK HOCKEY FIELDS

POTENTIAL SITE 2
 JFK HOCKEY FIELDS

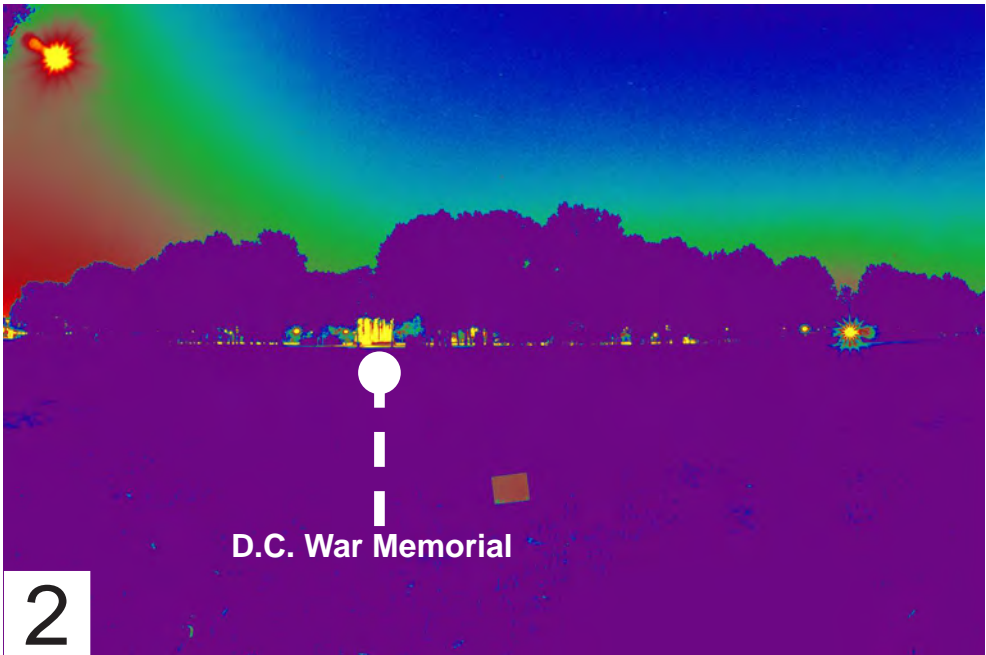
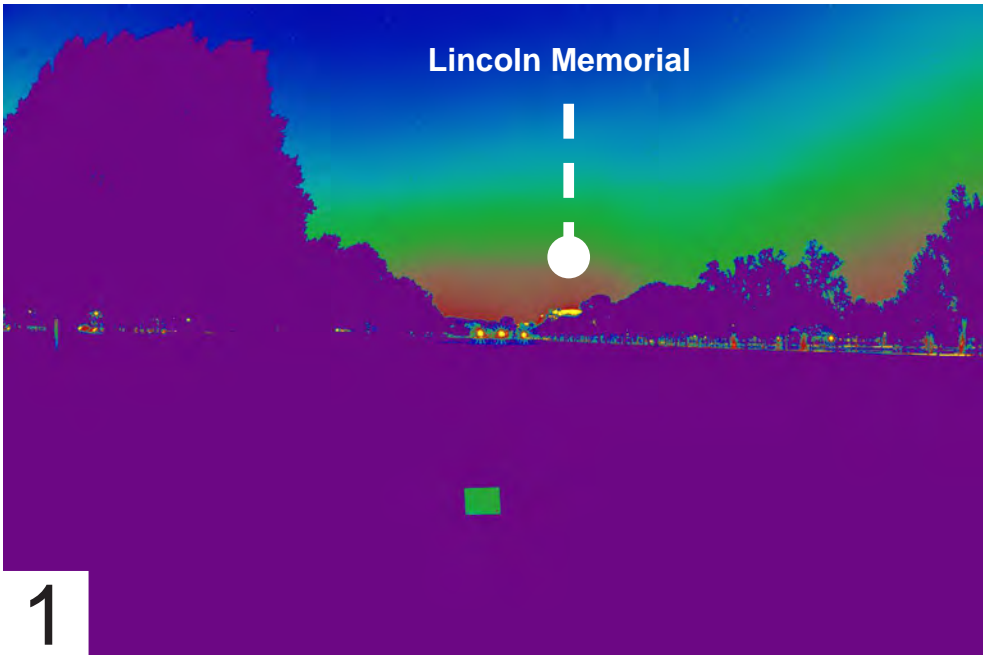
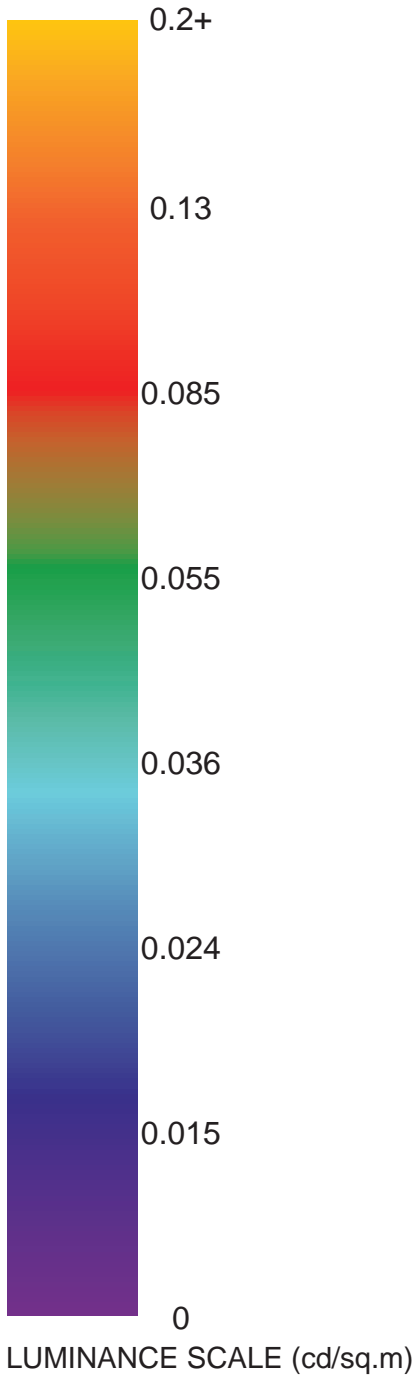
Existing Site Lighting Conditions



Site Observations

Overall, Site 2A and 2B are both relatively dark; however perimeter elements provide different challenges. Approximately 500+ feet east of 2B is a large roundabout with heavy traffic and perpetual strong glare from headlights. The brightness of the WWII Memorial and the Washington Monument is visible when facing east. Facing west on 2A, has no prominent glare sources and the Lincoln memorial is relatively blocked by trees. Facing south on 2A and 2B, the D.C. War Memorial is the only illuminated feature with no surrounding ambient site lighting. This produces a prominent visual distraction. The northern path of the site has even illumination from the pedestrian poles but the light minimally trespasses into the site.

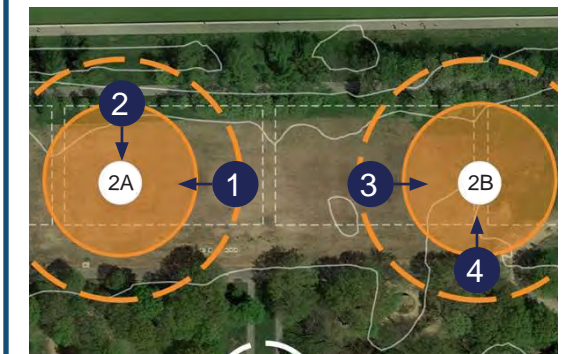
HDR Imaging and Observations



POTENTIAL SITE 2
JFK HOCKEY FIELDS

Existing Site Lighting Conditions

Legend



Pros and Cons

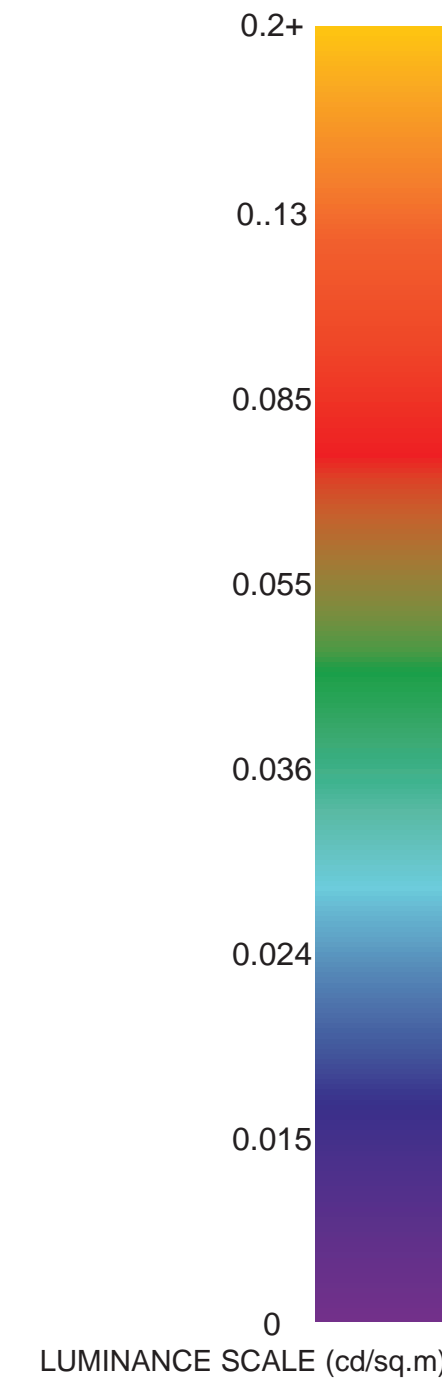
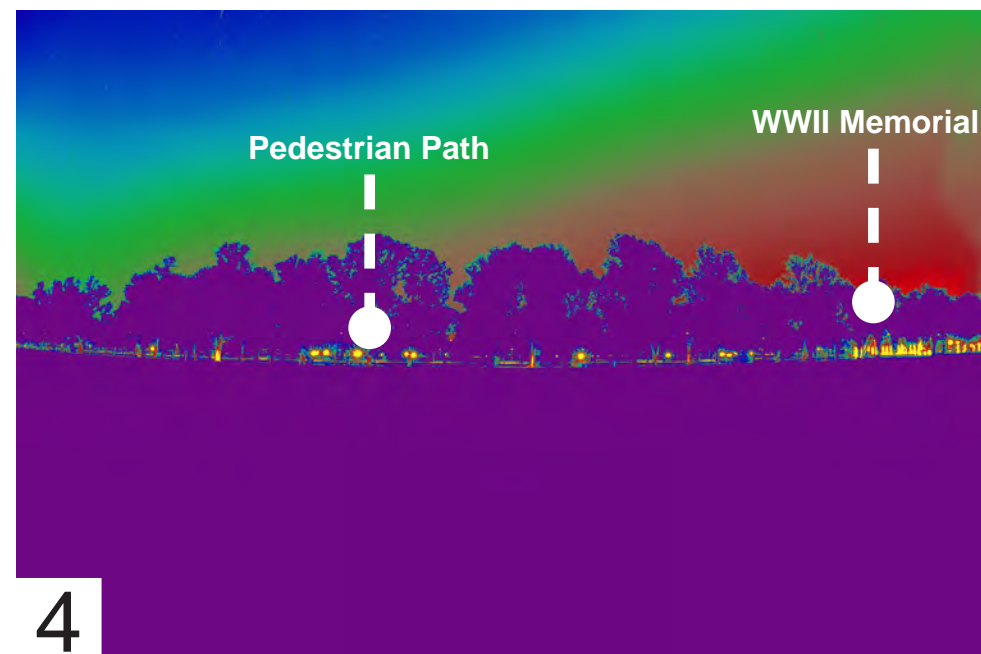
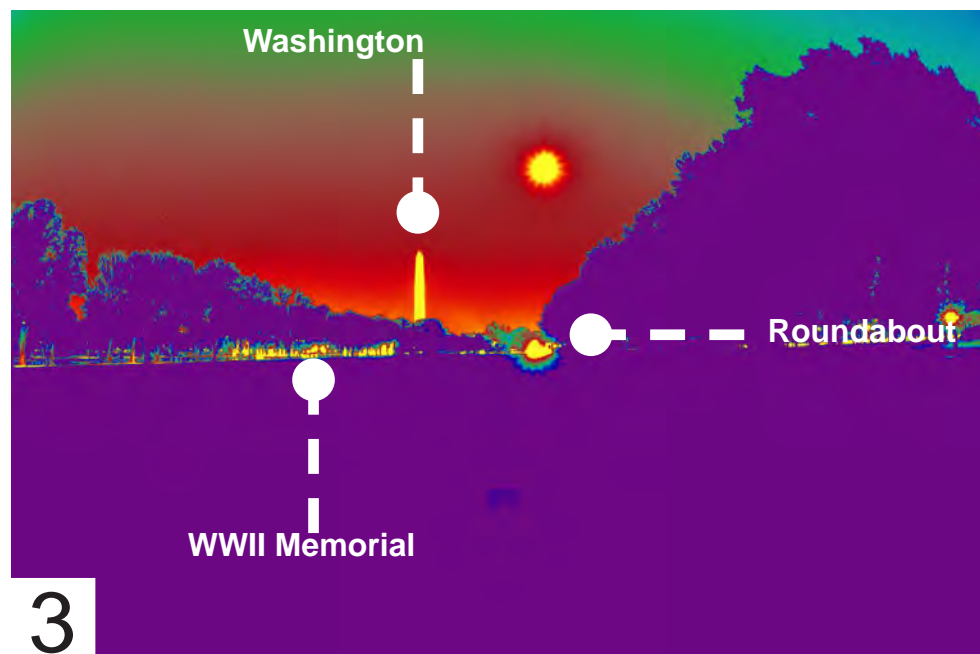
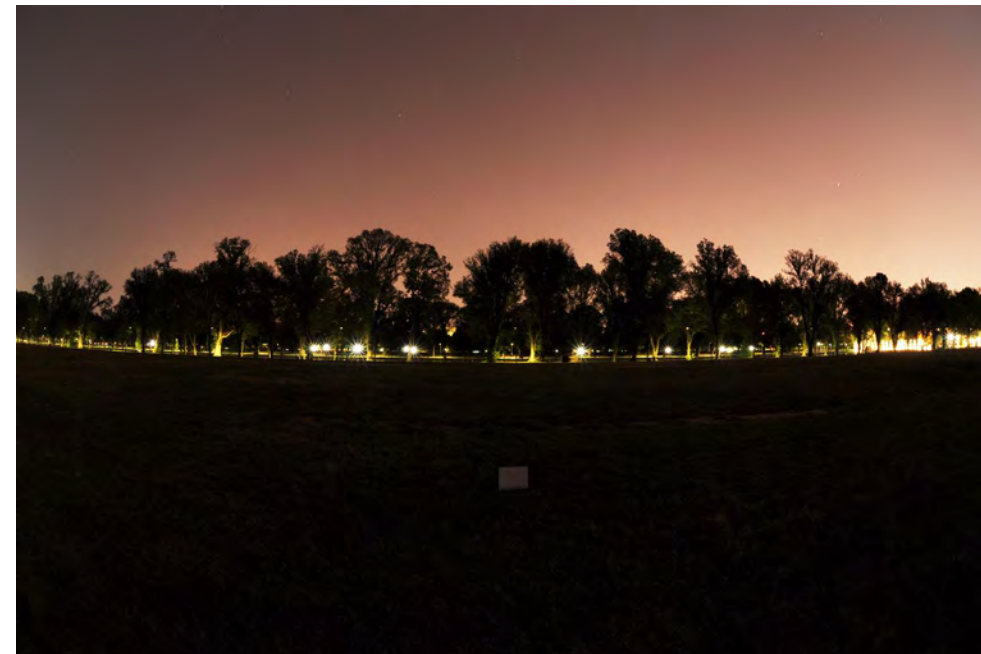
PROS:

- Site is dark with minimal light trespass from adjacent pathways or monuments

CONS:

- WWII, Washington Monument, and DC War Memorial are very visible from site
- Active roundabout East of site creates a distracting glare source

HDR Imaging and Observations





GLOBAL WAR
ON TERRORISM
MEMORIAL FOUNDATION.

POTENTIAL SITE 3
WEST POTOMAC PARK

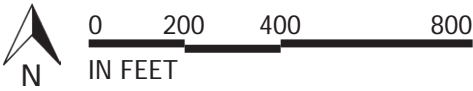




GLOBAL WAR
ON TERRORISM
MEMORIAL FOUNDATION.

POTENTIAL SITE 3
WEST POTOMAC PARK

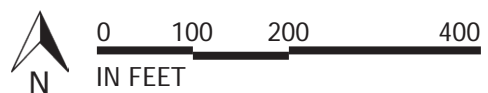
- Existing Monument
Zone of Influence
- 1 Acre Site Area
- 2.5 Acre Site Area
- Reserve Boundary Line
- Area I Boundary Line





POTENTIAL SITE 3
WEST POTOMAC PARK

- Existing Monument Zone of Influence
- 1 Acre Site Area
- 2.5 Acre Site Area
- Pedestrian Traffic
- Vehicular Traffic



Site Description Summary

This site is located in West Potomac Park and encompasses an area that is centered on the Potomac Riverfront. The site area extends along the Potomac River shoreline to the northwest and southeast of the intersection and includes the adjacent quadrants to the east, just shy of the existing ballfields. This area is relatively flat, with cherry trees flanking Ohio Drive, paralleling the river shoreline. Located approximately ½ mile south of the Lincoln Memorial, it is near the FDR and MLK Memorials, both of which are on the Tidal Basin.

Prominence / Visibility

The riverfront setting makes this a highly visible and prominent site, albeit to the south of the main east-west axis of the Mall. Proximity to FDR, MLK and Lincoln Memorials will ensure abundant visitor traffic in the general area.

Reflection / Contemplation

The placement of the site on the Potomac River’s edge, with Arlington Cemetery across the River, are positive factors for creating a reflective environment at this location. The chief negative factor associated with this site is the noise from airplanes taking off to the north from Reagan National Airport, but this is the case for the nearby memorials as well.

Commemorative Opportunities

This location along the riverbank was identified as a potential commemorative site in the Memorials and Museums Master Plan (2001). Given the proximity to other nearby memorials and the unique waterfront adjacency, this location offers several very special opportunities, particularly with respect to the thematic context of the site. Given the flatness of the site, opportunities to provide an interpretive facility may be limited; although outdoor interpretive elements could be incorporated, and the site could extend out over the water’s edge.

Urban Design Considerations

The strategic location on the riverfront offers unique design opportunities. Dramatic views across the river and prominent views from the River are just some of those special opportunities. However, it would be necessary to relocate a portion of Ohio Drive to the eastern edge of the site boundary to consolidate sufficient site area for a memorial. The existing intersection location can become a visual focal point. The site area could extend out into the river, perhaps as a southern ‘belvedere’ companion to the existing one aligned with Constitution Avenue, north of the Arlington Memorial Bridge. The existing roadway network in West Potomac Park already deviates from the formal layout envisioned in the McMillan Plan, and a re-routing of Ohio Drive around a focal, axial centerpiece might be considered a more consistent interpretation. The existing ballfields would not be affected.

Accessibility

Pedestrian and vehicular access would be available from Ohio and West Basin Drives. Public transit would be available via the existing Circulator bus service to the FDR and MLK Memorials. Metrorail is approximately 1.5 miles away to the north. There is limited parking available at MLK and FDR but there is parking available along Ohio Drive. In addition, this location is next to a designated water taxi landing on the riverfront. Nearby restroom and food & drink concessions are available at both the FDR and MLK Memorials.

Environmental Considerations

Prior the development of Washington D.C, the Potomac River extended into the city to approximately Constitution Avenue to the north and 17th Street to the east. Soils dredged from the Potomac River and imported from other sites were deposited in the area located west of the Washington Monument extending from Constitution Avenue southward through the Tidal Basin and into the area known as Haines Point. Construction of a new memorial in West Potomac Park should anticipate deep foundations or piling to support new structures on the site to prevent long term settling.

The West Potomac Park site extends over the existing 66” Potomac Interceptor that exists approximately 20 feet under/near Ohio Drive. A future 18 foot wide Potomac Tunnel (approximately 100-feet deep), as proposed under the DC Clean Rivers Project, is also anticipated to cross near or under the proposed project site. The project is currently in the planning stage and a final alignment for the new tunnel has not been established. Any proposed structure made part of the new memorial will need to avoid impacting either tunnel.

According to the Environmental Assessment (EA) published in October 2018, Ohio Drive is considered a hauling route for Option #2 Mining Site, located in the southern portion of West Potomac Park. If Option #2 for a mining site is approved, this option would impact construction of a new memorial.

Infrastructure

An existing potable water line lies within West Basin Drive that can support a new memorial at the West Potomac Park site. A sanitary sewer system is also available nearby through normal extension of existing systems supporting the FDR and MLK memorials.

Power and communications systems installed for the MLK and FDR memorials should also be available for a new memorial through the normal extension of existing systems.

Thematic Nexus

This site along Ohio Drive SW and the Potomac River offers multiple opportunities for thematic connections to nearby landmarks and institutions. The following represents a summary of these connections.

Arlington National Cemetery - Arlington National Cemetery lies across the Potomac River from this site, offering reciprocal views between the points. Arlington National Cemetery represents the lives cost, and the ongoing sacrifices made, in the effort to support the nation’s longest war.

20th Century War Memorials - The GWOT Memorial is the most recent in a line of memorials commemorating the United States’ involvement in conflicts world-wide. These memorials are generally located within the western end of the National Mall, including the District of Columbia World War I Memorial, the World War II Memorial, the Korean War Veterans Memorial, the Vietnam Veterans Memorial, and the Desert Storm and Desert Shield Memorial (underway).

Leadership Commemorative Works - This site sits within view of multiple commemorative works dedicated to honoring the men and women who helped create, preserve, and guide the United States of America through wartime, including the Lincoln Memorial, the Washington Monument, and the Franklin Delano Roosevelt Memorial. As a means to recognize America’s leadership role in countering terrorism, the GWOT Memorial would be compatible with these other memorials.

Military Service Memorials - The Air Force Memorial and the Marine Corps Memorial sit across the Potomac River and are visible from this site. In addition, the Pentagon is also located almost directly across the river, further connecting this site to the military. This site would offer links to two military service branches that have participated in the Global War on Terror.



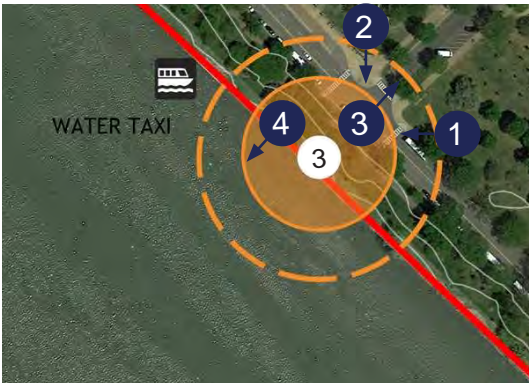
GLOBAL WAR
ON TERRORISM
MEMORIAL FOUNDATION.

POTENTIAL SITE 3
WEST POTOMAC PARK

POTENTIAL SITE 3 WEST POTOMAC PARK

Existing Site Lighting Conditions

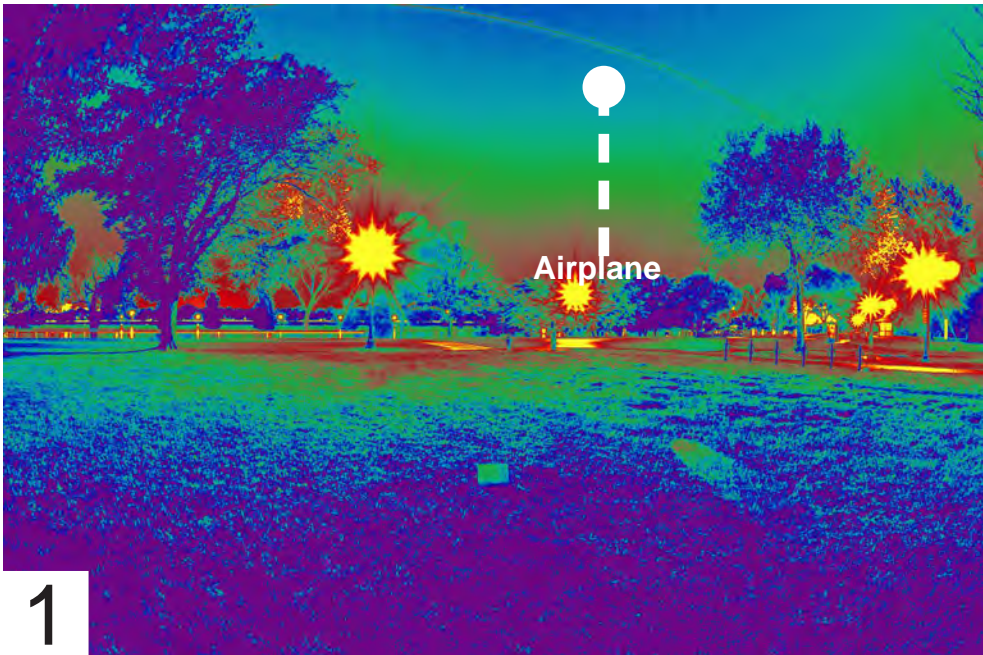
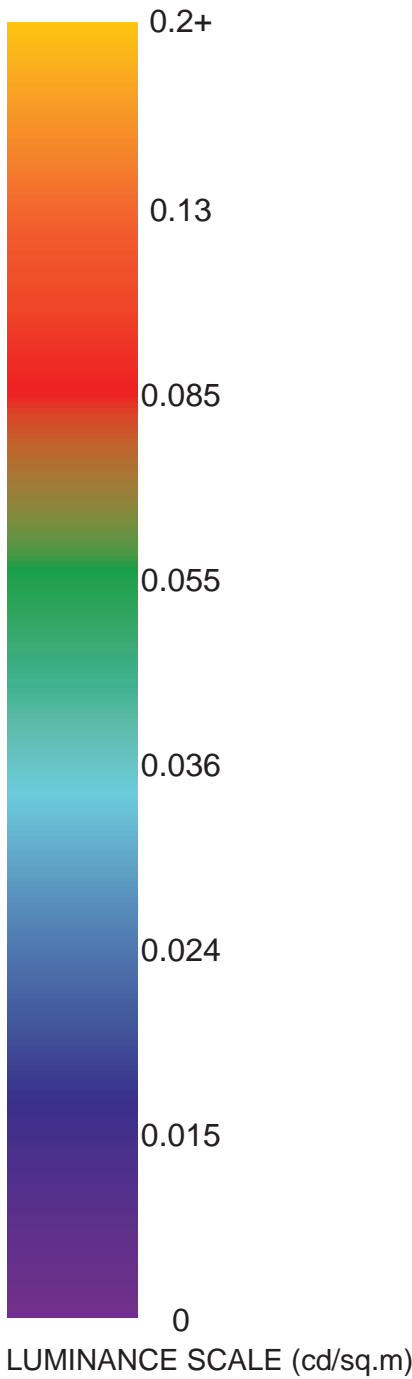
Legend



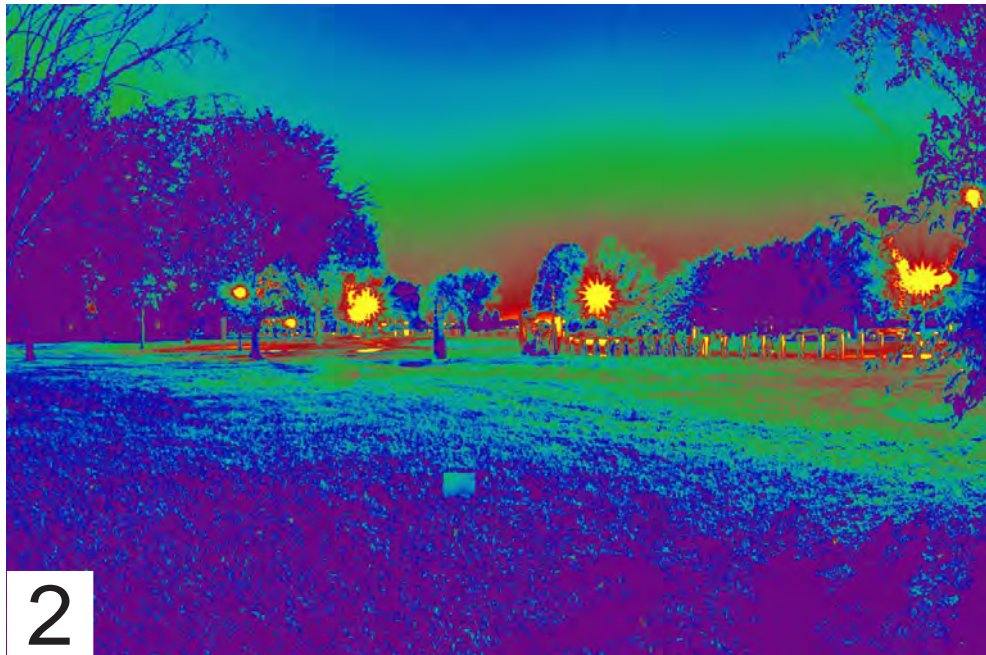
Site Observations

Site 3 is located adjacent to an active roadway with moderate traffic, however it has a distinct connection with the water which provides opportunity for a dramatic experience with reflection of light and water. The adjacent riverbank is dark, so facing the water is a blank slate for lighting. This site is located under the DCA flight path, so there is noticeable plane activity, both for noise and light. Due to the active roadway that hugs the site, there is direct glare from car headlights which could be distracting during the nighttime experience. Also, brightness from the FDR Memorial is visible in the distance to the East. These elements should be taken into account when orienting the memorial.

HDR Imaging and Observations



1

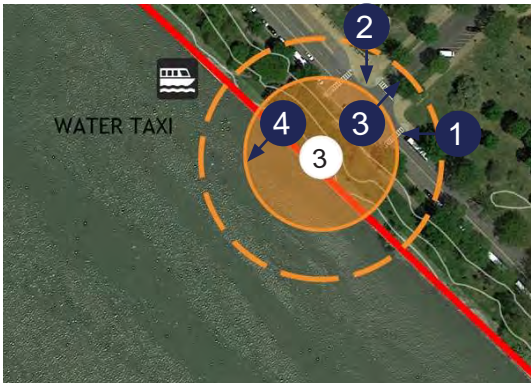


2

POTENTIAL SITE 3 WEST POTOMAC PARK

Existing Site Lighting Conditions

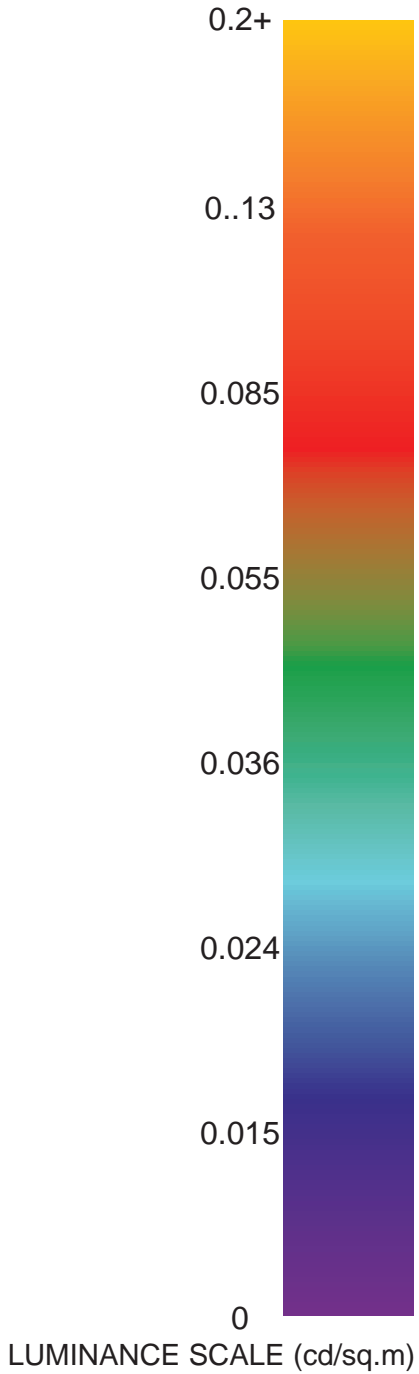
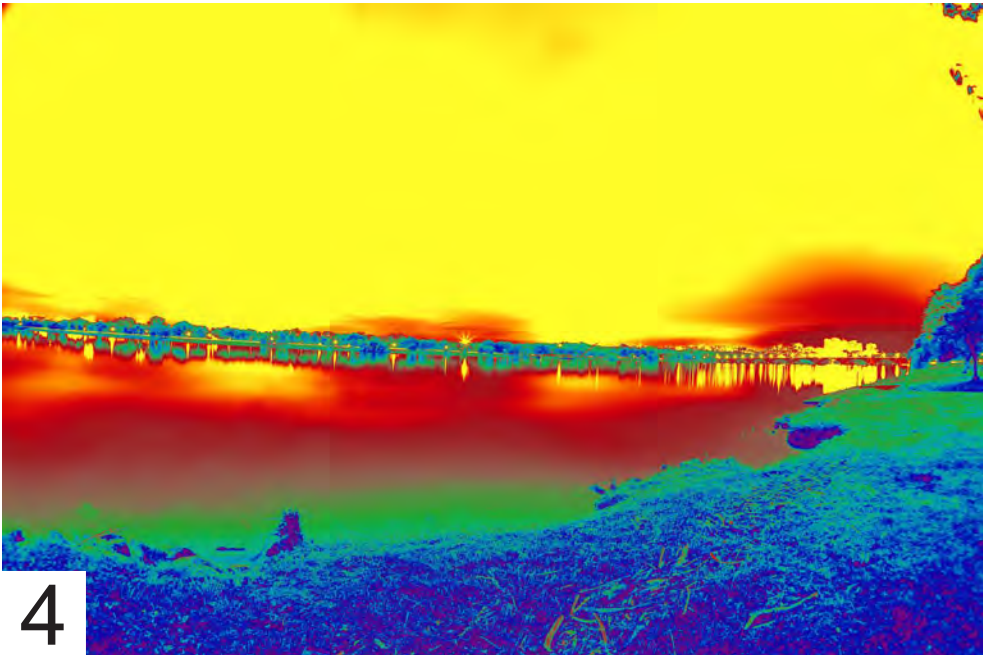
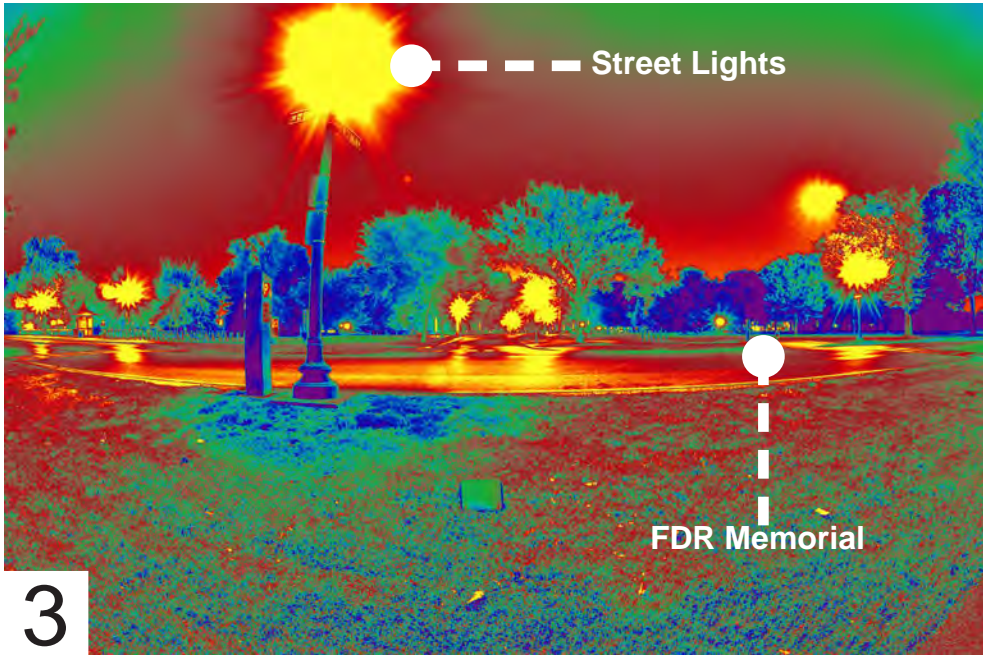
Legend



Pros and Cons

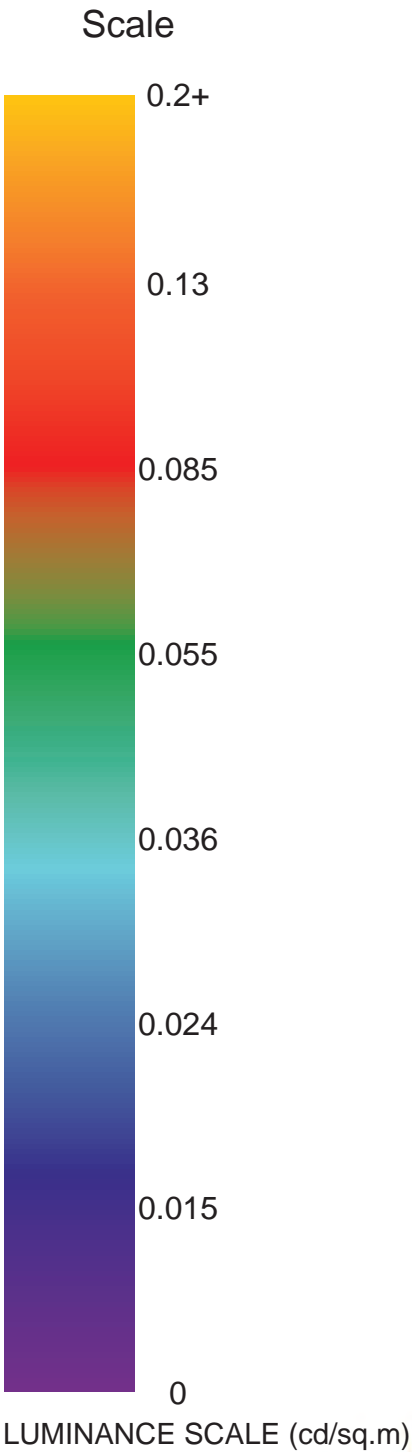
- PROS:**
- Waterfront provides opportunity for reflection and connection with light and water
- CONS:**
- Adjacent to active roadway with glare from passing car headlights and nearby street lights

HDR Imaging and Observations



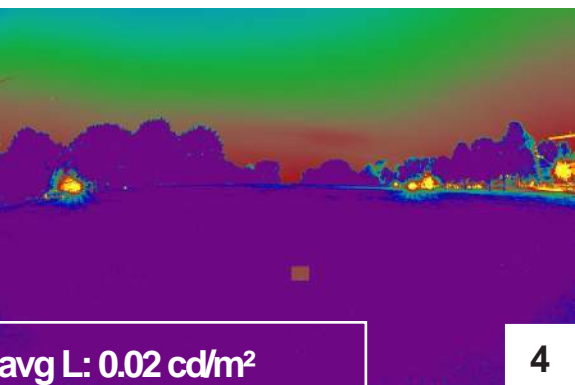
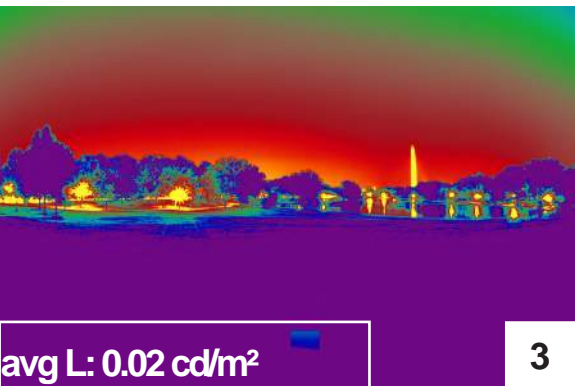
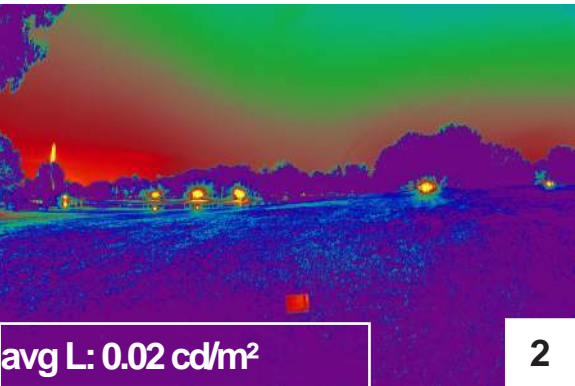
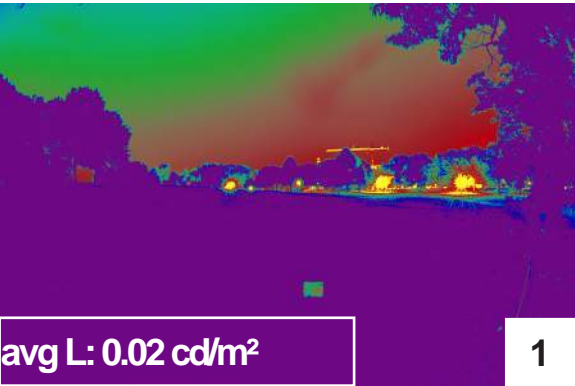
SITE COMPARISON

Existing Site Lighting Conditions

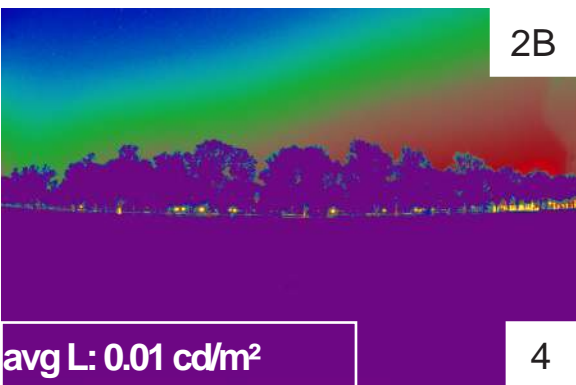
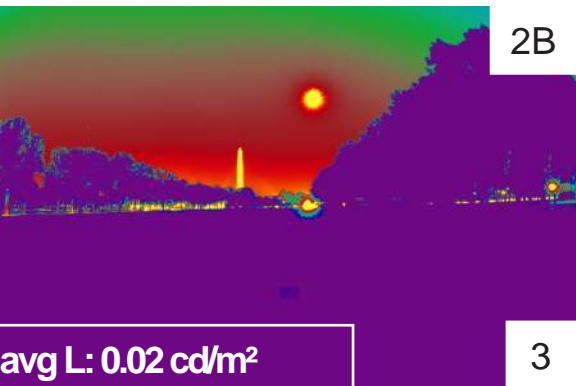
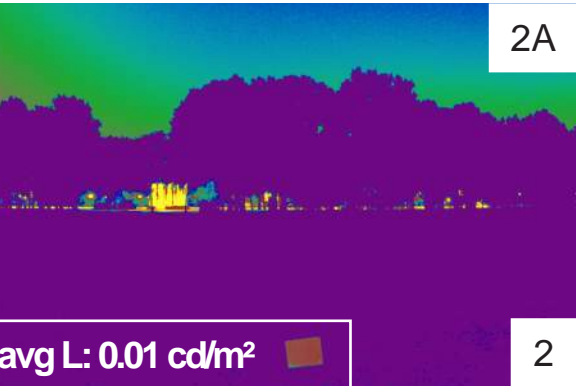
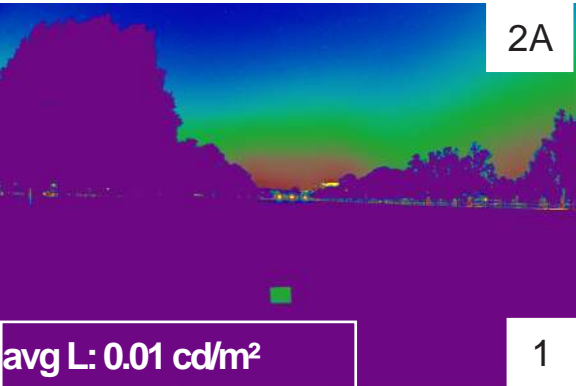


HDR Imaging and Observations

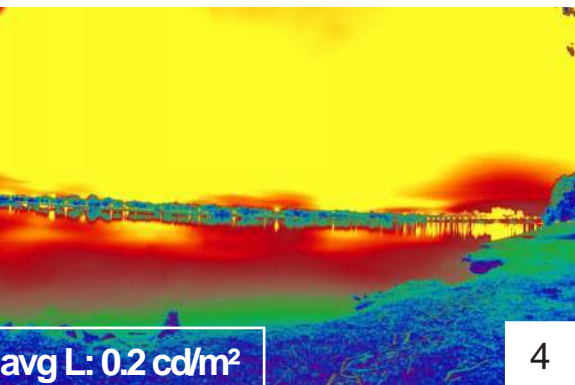
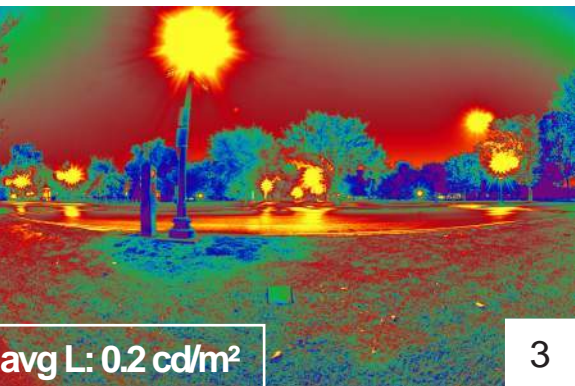
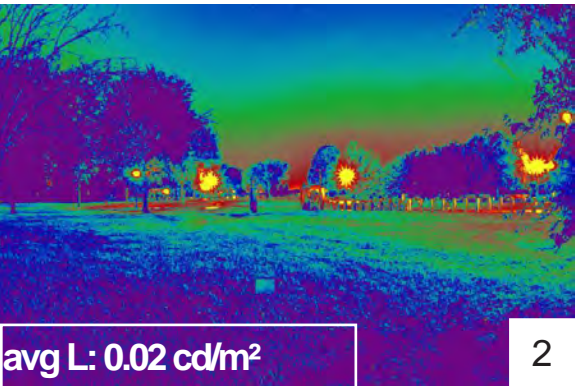
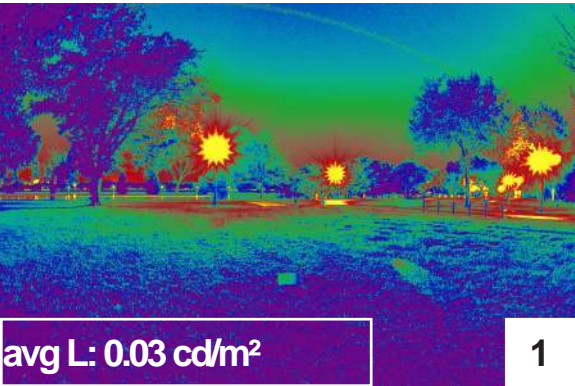
Site 1



Site 2A and 2B



Site 3

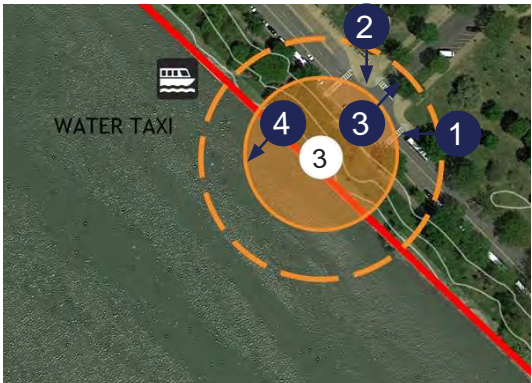


HDR Imaging and Observations

POTENTIAL SITE 3
WEST POTOMAC PARK

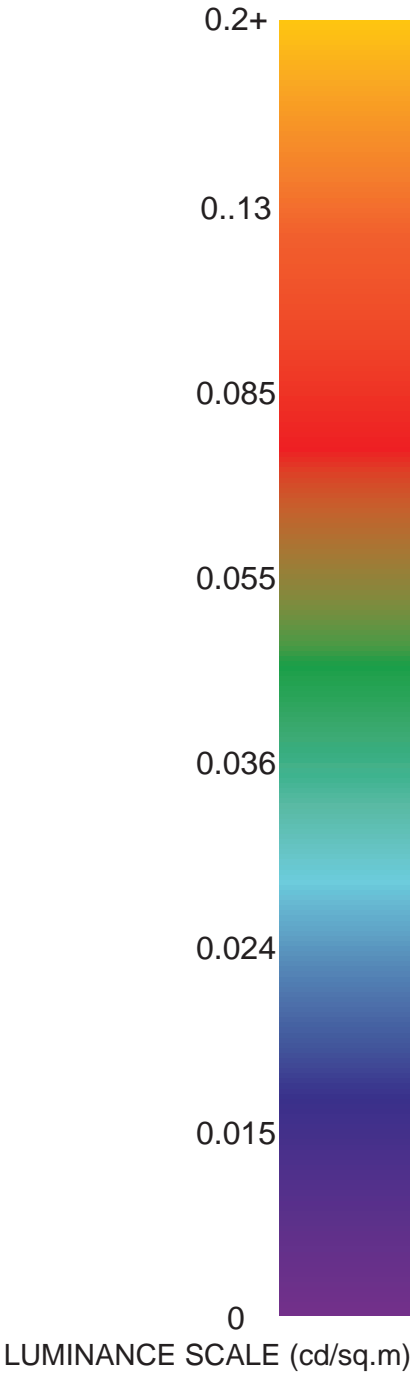
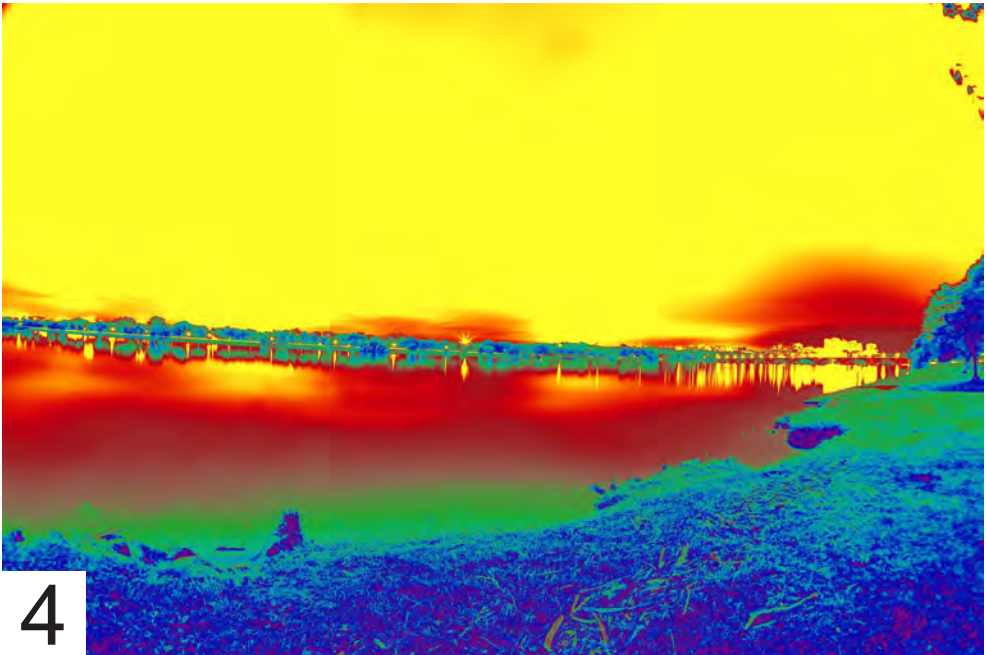
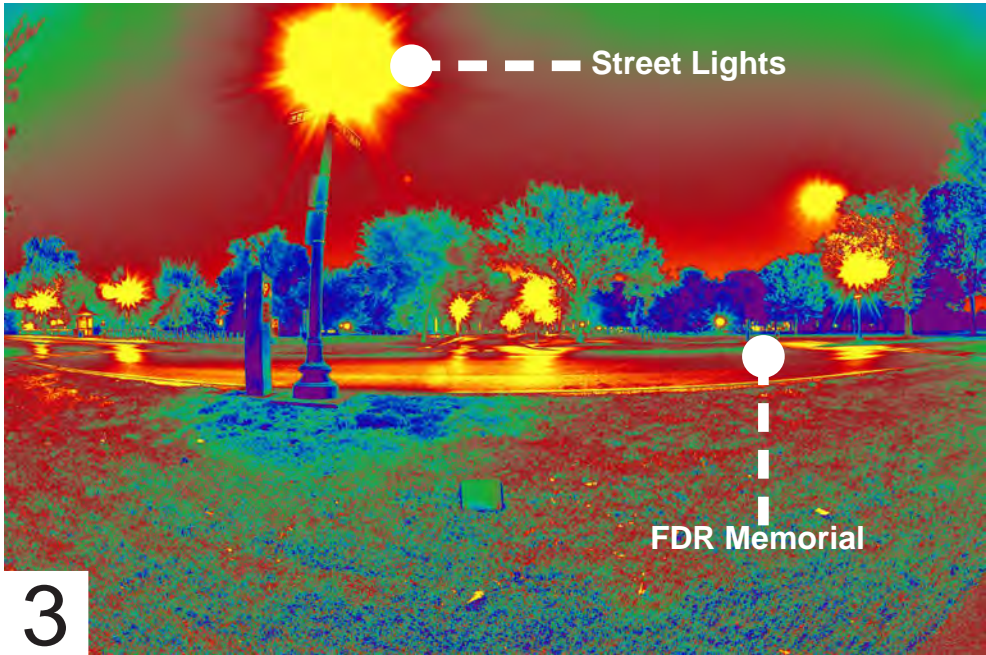
Existing Site Lighting Conditions

Legend



Pros and Cons

- PROS:
- Waterfront provides opportunity for reflection and connection with light and water
- CONS:
- Adjacent to active roadway with glare from passing car headlights and nearby street lights



QUESTIONNAIRE

Participation in this survey is voluntary. Any information obtained is for the sole use of the Foundation, and we will do our best to keep all responses confidential. You are invited to participate in this research project because you are a GWOT veteran, family member, or were affected by this conflict, and the Foundation believes that your input will be valuable. We ask that you do not forward this questionnaire to anyone.

1. Why does the GWOT Memorial matter to you?
2. Why should the GWOT Memorial matter to our country, especially those who didn't serve?
3. Who should the GWOT Memorial honor or represent?
4. What message should the GWOT Memorial convey?
5. When someone stands before the GWOT Memorial, what do you want them to feel?
6. When someone visits the GWOT Memorial, what do you want them to learn?
7. How should the GWOT Memorial be different from the other war memorials in DC? If you have visited war memorials in DC, what do you like or don't like about any of them?
8. What about the GWOT do you think the general public doesn't understand?
9. What powerful image or images from the GWOT should be brought to life with this memorial?
10. What else would you like us to know?

The Memorial – Program Parameters

The following questions are multiple choice. Please add any comment on the issue we raise in the Other & Comment line. There are no right answers, only good ideas. In this section we are gathering everyone's thoughts on the physical and functional vision and program of the Memorial. Thank you for helping us.

The Memorial

1. The Memorial is meant to represent the past, present and future. What is the function over time of the Memorial?
a. Permanent and unchanging c. All the above b. Ongoing, evolving & unfinished
Other and Comment
2. The foundation believes that storytelling should be part of the experience. How is the story told?
a. Open air e. Simple Stories b. Inside a structure f. Complex Stories
c. In person oratory g. All the above d. Visually displayed Other and
Comment
3. There will be an element of educating the visiting public. How should our visitors learn?
a. Permanent Exhibits (statues/bas-reliefs) d. Ongoing Programs b. Changing Exhibits (temporary) e. Instructional Experts c. Curated interpretation (teaching) f. All the above Other and
Comment

4. Would you like to see other support services built in conjunction with this memorial? If so, what support facilities should the Memorial provide?
a. Restrooms d. Bike Share Station b. Retail/Gift Shops e. Parking c. Food Concessions
Other and Comment

5. Would you like to see special events occur at the Memorial. If so, what types of activities at the site?
a. Planned activities d. Audience Engagement b. Impromptu activities e.
Private Celebrations/ c. Annual Ceremonies Commemorations Other and
Comment

6. Cost – How much should be invested?
a. Over \$100 million b. Under \$10 million c. \$50 million
Other and Comment

The Site 1. Location – Where in the metropolitan Washington DC area should the Memorial be? a. On the Mall (The Reserve) c. Area II b. Area I d. A remote destination

2. Accessibility – How do we get there? a. Walk d. Bike b. Car e. Boat c. Public Transportation f. All the above Other and Comment

3. Settings & Views – How should the memorial connect to its environment? a. Prominent e. Landscaped (green areas) b. Private f. Hardscaped (paved surfaces) c. Related to other sites g. Use of Water d. Isolated from other sites Other and
Comment

4. Sound & Light – Throughout the City there is a great deal of variation of sound and light. What qualities of sound and light do you believe the memorial should embrace? a. Intimate (quiet and subdued) c. Memorial lit at night b. Public (brighter and louder) d. Memorial dark at night Other and
Comment

5. Typology – There are many types of memorials throughout the country. What type of object will this memorial be? a. A statue (realistic) d. A building b. A monument (abstract) e. All of the above c. A place Other and Comment

6. Size – What size should the site be? a. Under 3 acres c. Over 10 acres b. 3 to 5 acres Other and
Comment



DOCUMENTS REFERENCED

A. ENABLING LEGISTLATION

- 1. PUBLIC LAW 115-51
- 2. 40USC 89
- 3.PUBLIC LAW 99-582
- 4 H.R. 5046 (Introduced 11/12/19)

B.MEMORILAS & MUSEUMS MASTER PLAN

NCPC (12/ 2001 Amended 8/3/2006)

C. SITE LOCATIONS

- 1.NPS Map 869
- 2.NPS seeing the Nation's Capital



**GLOBAL WAR
ON TERRORISM**
MEMORIAL FOUNDATION.

TEAM

GLOBAL WAR ON TERRORISM MEMORIAL FOUNDATION
PO Box 26120
Fayetteville, NC 28314
(910) 322-3484
www.gwotmemorialfoundation.com

WINSTANLEY ARCHITECTS & PLANNERS
107 N. West Street
Alexandria, VA 22314
(703) 519-8081
www.winstanleyarchitects.com

HORTON LEES BROGDEN LIGHTING
38 East 32nd Street
11th Floor
New York, NY 10016
(212) 674-5580
www.hlbldighting.com

ALPHA CORPORATION
21000 Atlantic Boulevard
Suite 400
Dulles, VA 20166
(703) 450-0800
www.alphacorporation.com

AECOM
3101 Wilson Boulevard
Suite 900
Arlington, VA 22201
(703) 682-4900
www.aecom.com

107 N WEST ST, ALEXANDRIA, VA 22314

703.519.8081

WINSTANLEYARCHITECTS.COM