

National Desert Storm and Desert Shield Memorial

Concept Design
National Capital Memorial Advisory Commission
February 11, 2020



Robert Eccleston

James Nance



Table of Contents

- » Memorial Site
- » Design Concept
- » Concept Development



Existing Conditions

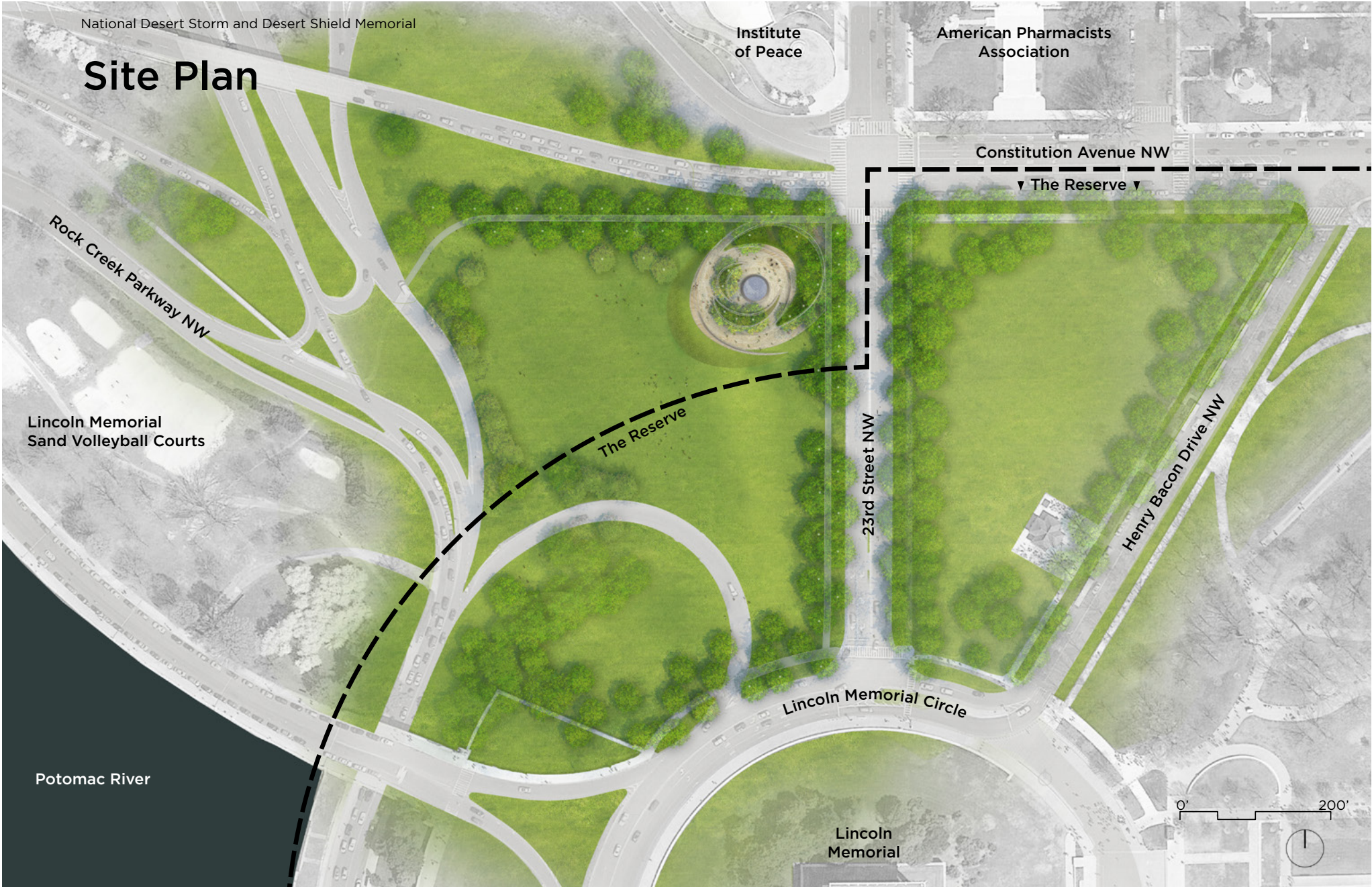


The memorial site is located at the intersection of Constitution Avenue NW and 23rd Street NW between the U.S. Institute of Peace to the north, the Lincoln Memorial further south, and the Vietnam Veterans Memorial further east.

Current Photographs



The site is an open lawn with multi-purpose recreation fields.



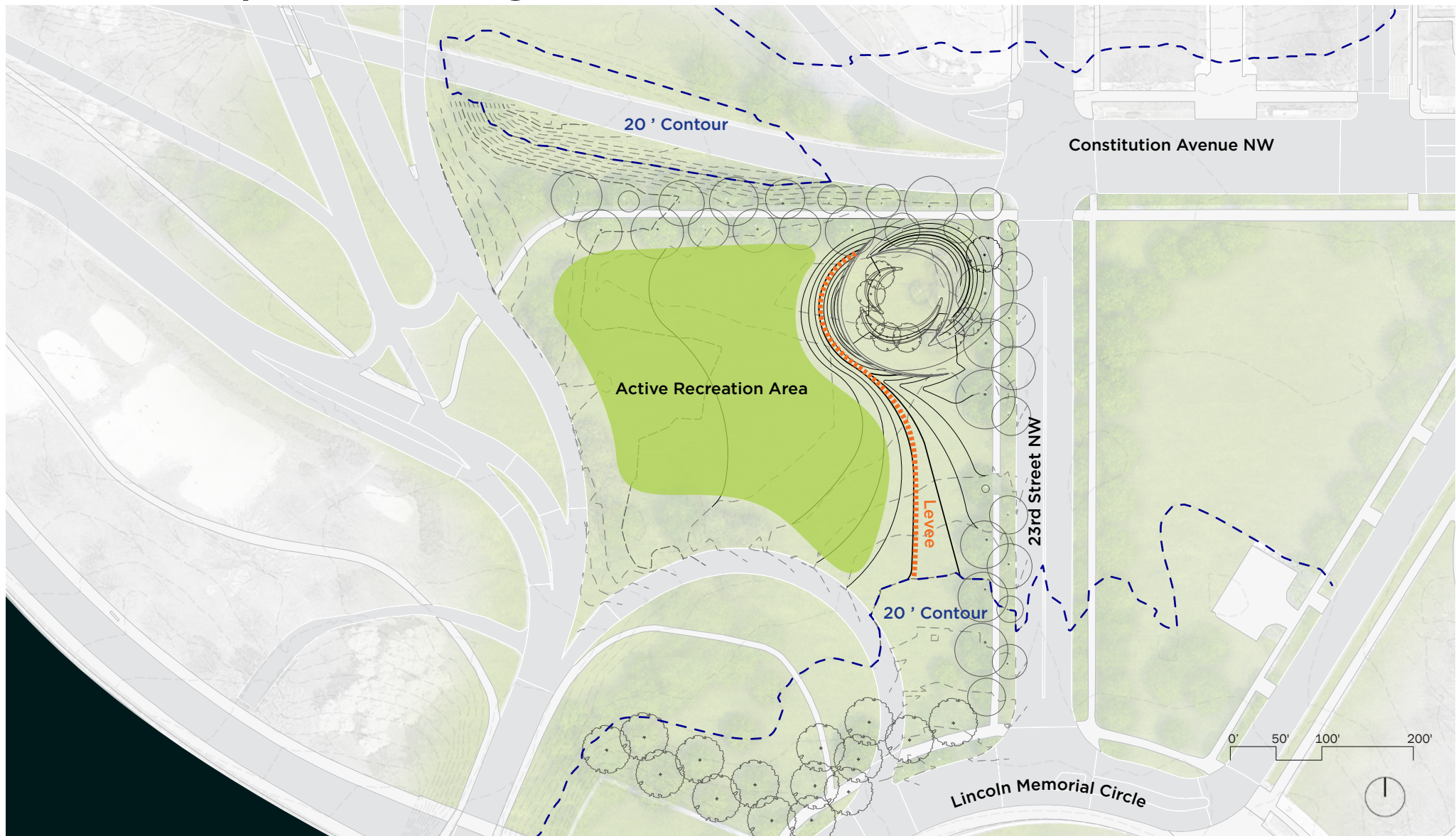
The site plan illustrates the modest scale of the Memorial.

Site Impact: Trees



The current site plan protects and replaces existing trees and proposes new trees consistent with the Lincoln Memorial Cultural Landscape.

Site Impact: Grading



The topographic changes to the site will incorporate flood protection for the memorial.

Design Inspiration



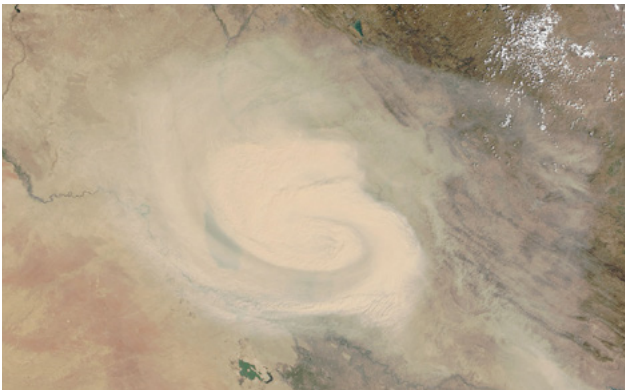
Dunes



Left Hook



Coalition



Storm



Oasis



Transformation

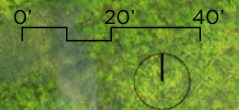
The memorial's design is inspired by the unique environmental and battle conditions, the unprecedented coalition that joined to liberate Kuwait, and the resulting transformation of the public's faith in the U.S. military.

National Desert Storm and Desert Shield Memorial

Memorial Plan

Constitution Avenue NW

23rd Street NW



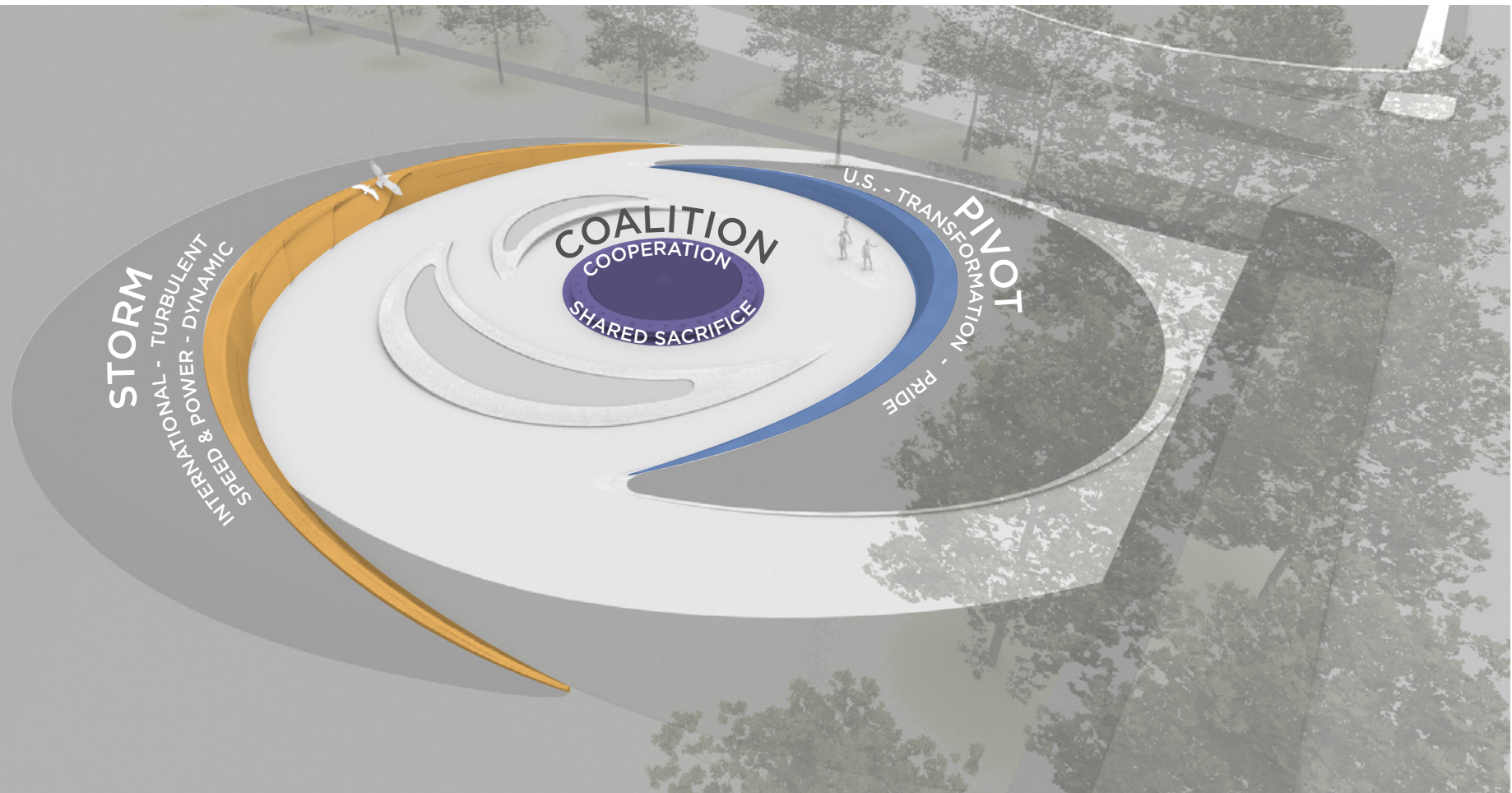
The Memorial's placement provides commemoration while maintaining the allées of trees and multipurpose recreation space.

Aerial Perspective



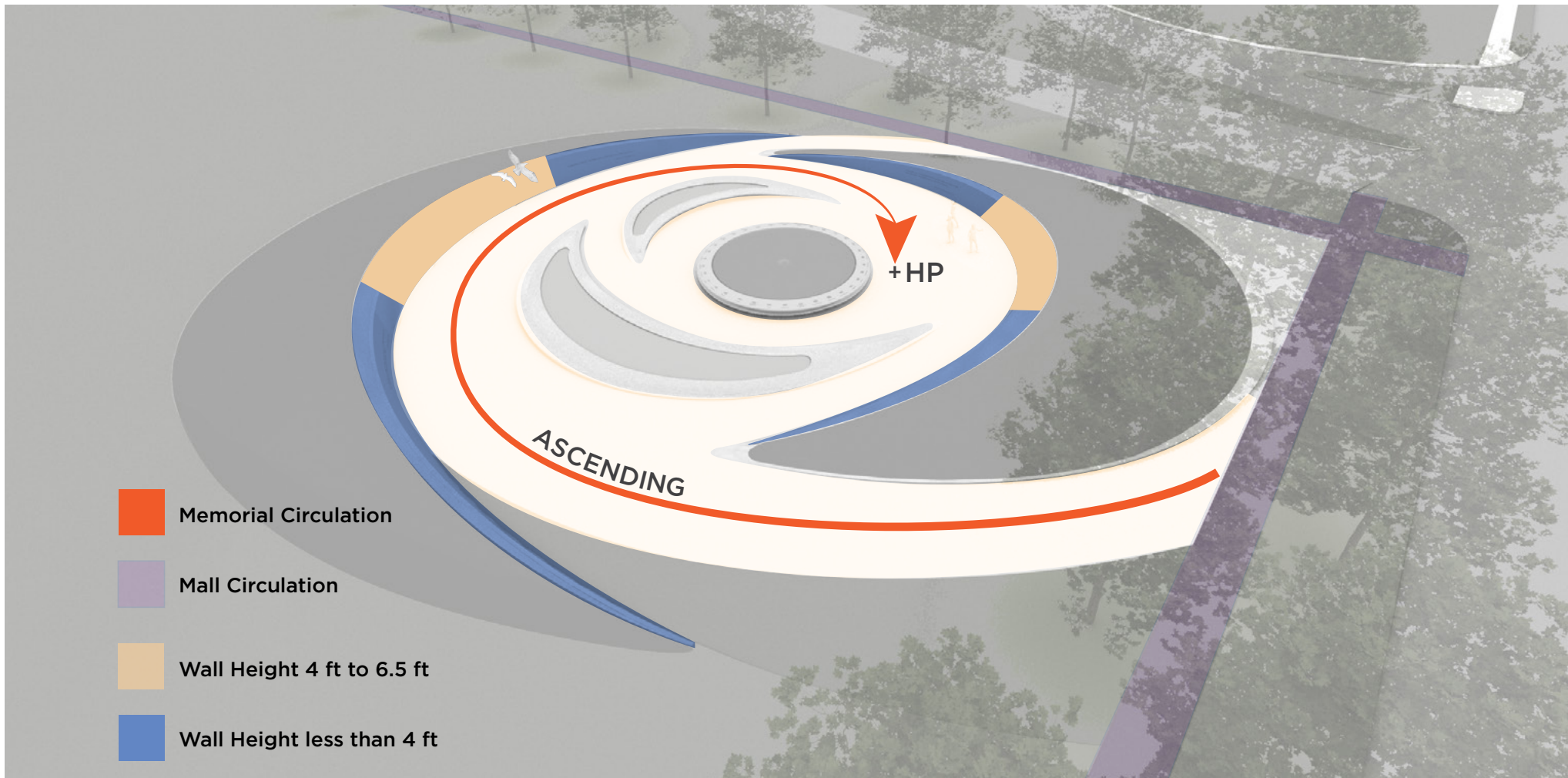
The landforms of the memorial enable an enclosed memorial experience that is visually open to the National Mall.

Commemorative Themes and Framework



The Memorial includes the three commemorative themes: the storm to commemorate service, the pivot to recognize the changed public's opinions of the military, and the coalition of multiple nations that came together.

Circulation and Wall Height



Visitors will ascend to a higher elevation as they circulate through the Memorial. The high points of the wall are placed off-center to create a greater sense of enclosure.

Oasis

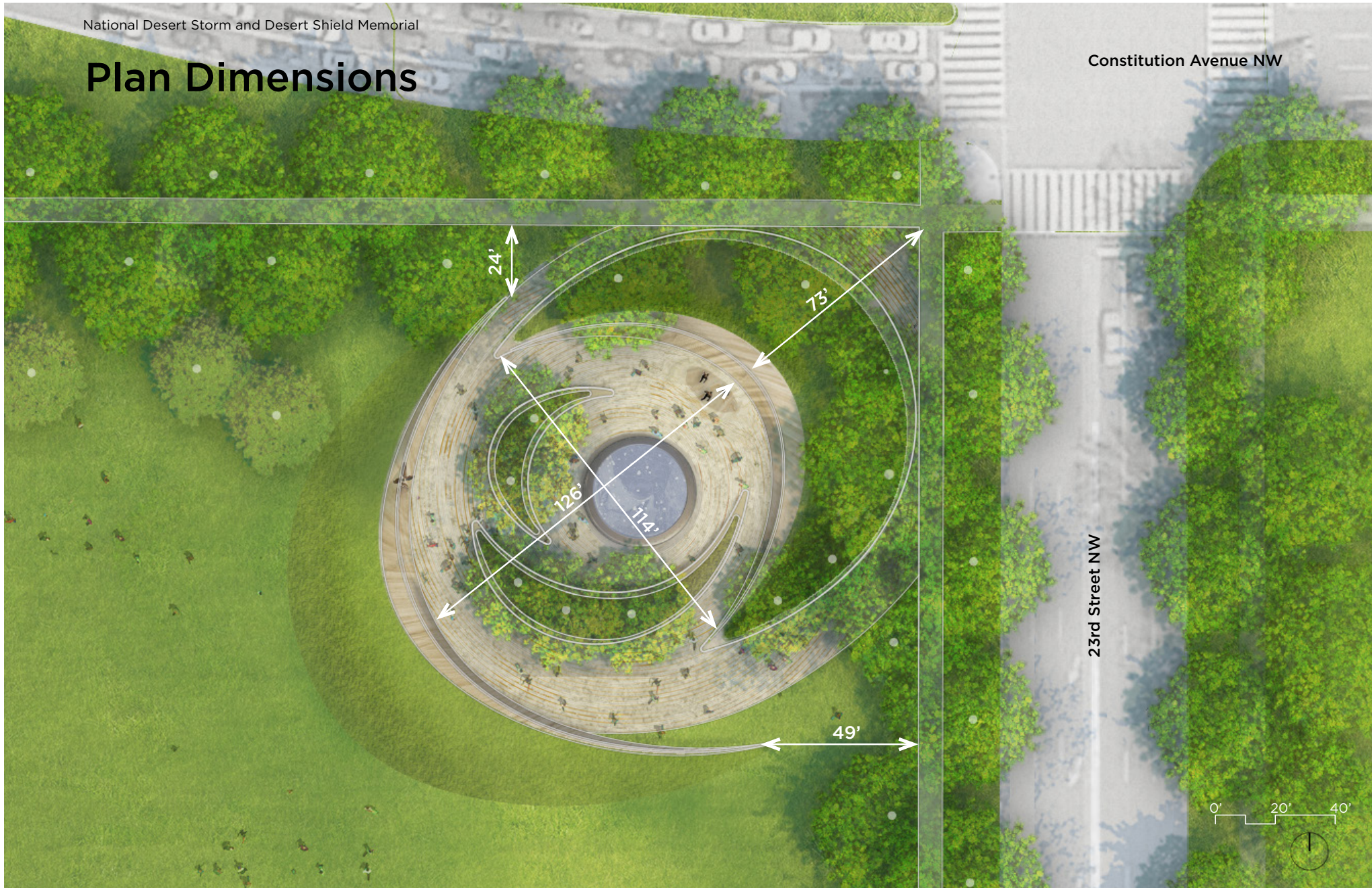


Green space and a water feature within the Memorial are intended to evoke a desert oasis.

Plan Dimensions

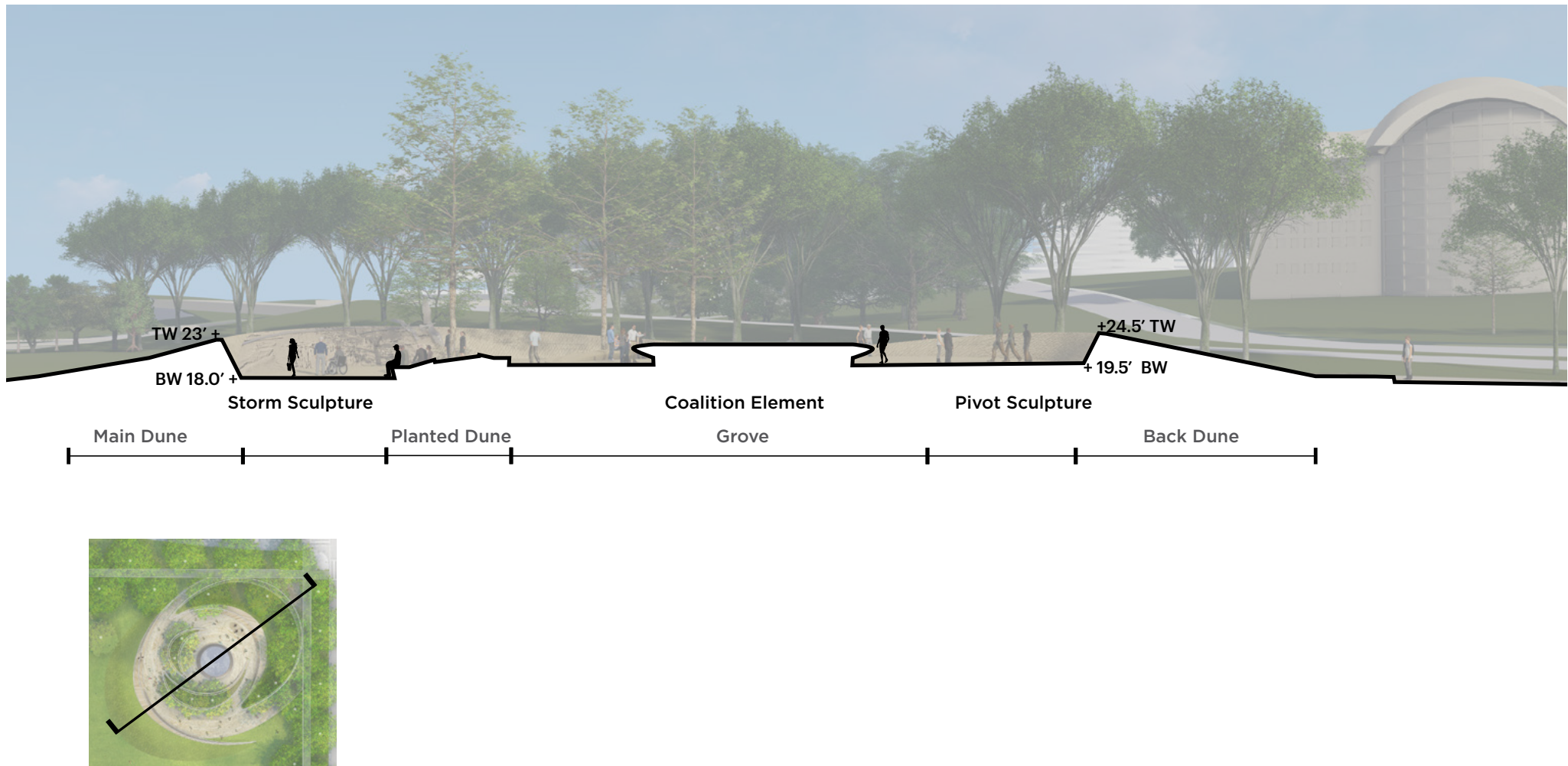
Constitution Avenue NW

23rd Street NW



The Memorial's reduced size and greater separation from Constitution Avenue and 23rd Street intersection enable a contemplative experience.

Section



The Section illustrates the grade changes across the site, including the landscape forms, planting area, and circulation paths.

Aerial View



View south towards the Lincoln Memorial

Visitor Experience



Interior Memorial southeast towards the Lincoln Memorial

Central Coalition Element



View south towards the Lincoln Memorial with water flowing out from the central element.

Central Coalition Element Without Water



Without water, the central element represents a communal table around which the nations gathered.

Central Coalition Element

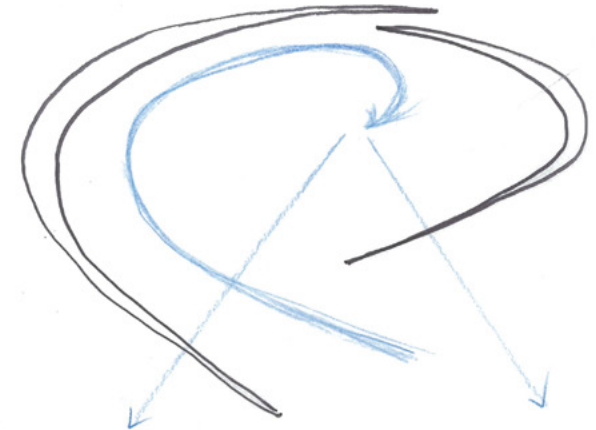


Memorial interior view at the central Coalition element , south towards the Lincoln Memorial.

Concept Development

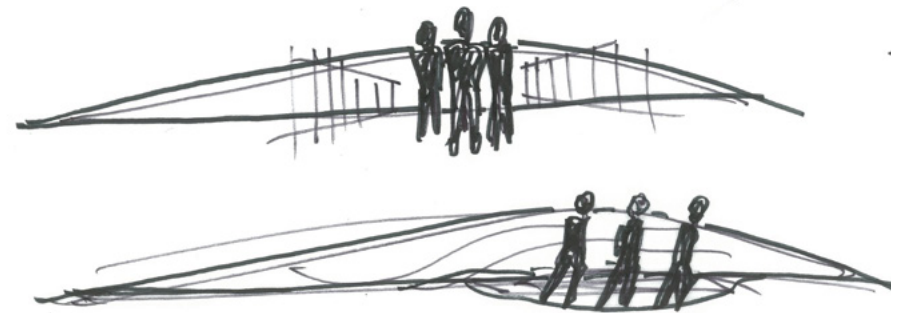
Foundations

- » Basic Commemorative Themes: Service, Transformation, Coalition
- » Ascending Left Hook Circulation
- » Form and Position of Memorial Walls
- » Views and Connections to Lincoln Memorial
- » Include Figurative Artwork
- » Include Water Element



Under Development

- » Artistic Wall Content
- » Integration of Walls and Sculptures
- » Central Element

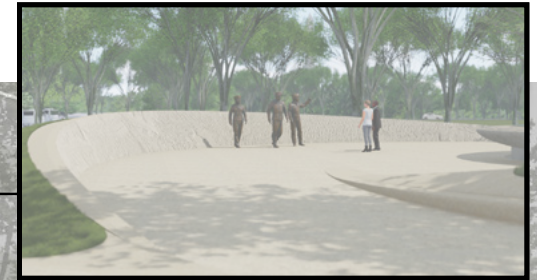


Walls Concept



STORM

"AGGRESSION MUST BE STOPPED. THAT IS THE LESSON OF THIS CENTURY."
-MARGARET THATCHER



"THEY SET OUT TO CONFRONT AN ENEMY ABROAD, AND IN THE PROCESS, THEY TRANSFORMED A NATION AT HOME"
-GEORGE H.W. BUSH

STORM

INTERNATIONAL - TURBULENT
SPEED & POWER - DYNAMIC

COALITION
COOPERATION
SHARED SACRIFICE

U.S. - TRANSFORMATION
PRIDE
PIVOT

"MY CONFIDENCE IN YOU IS TOTAL. OUR CAUSE IS JUST!
NOW YOU MUST BE THE THUNDER AND LIGHTNING OF
DESERT STORM."
-H. NORMAN SCHWARZKOPF

The conflict will be commemorated through quotes and stone carvings on the two dune walls, while the Memorial's ground treatment conveys a unifying "storm" theme.

Main Storm Wall - Bas Relief Inspiration

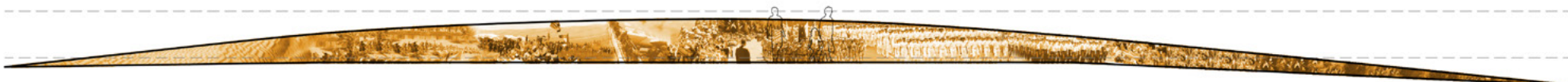


The design team is evaluating a more cinematic scale to serve as the narrative backdrop for the memorial themes. As a starting point, the design team collected historic photographs to explore possible imagery and inspire ideas to be incorporated into the bas relief. The individual historic photographs were then merged to create a single epic image to convey and interpret the commemorative theme.

Cinematic Bas Relief Inspiration and Process



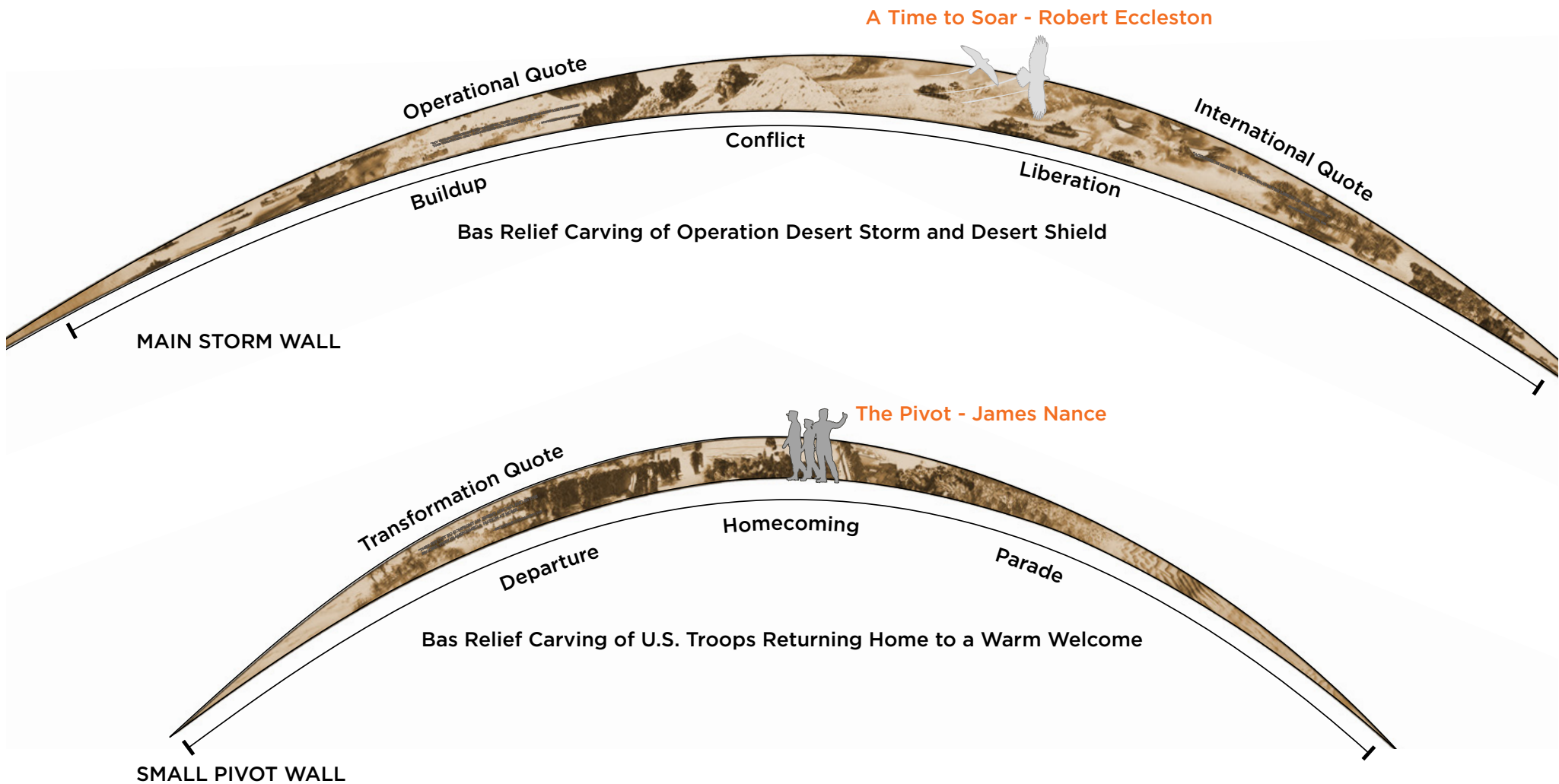
MAIN STORM WALL



SMALL PIVOT WALL

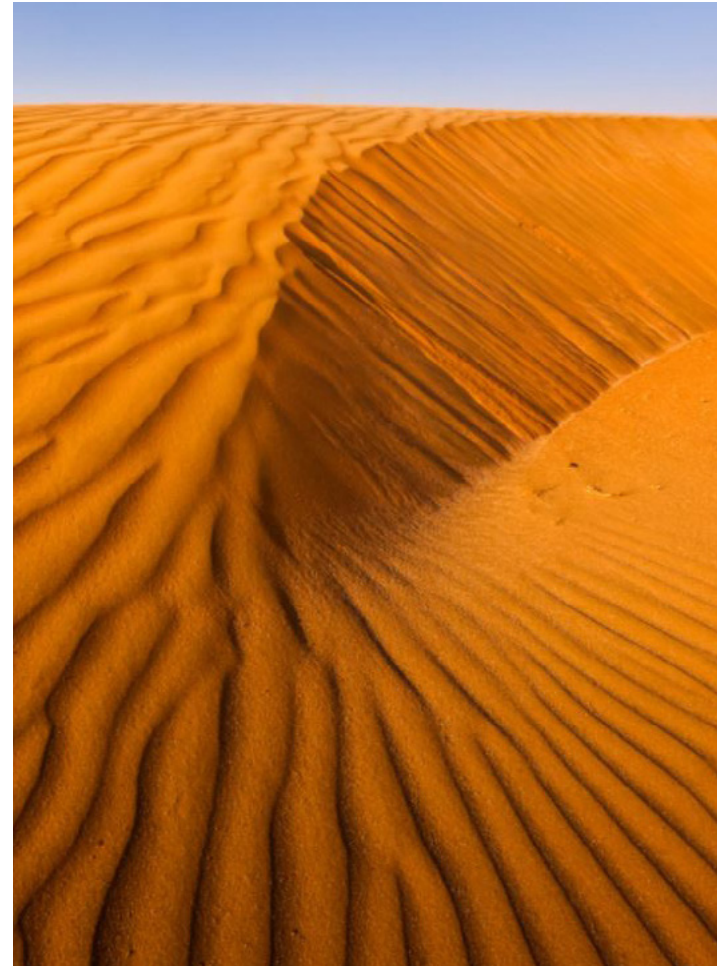
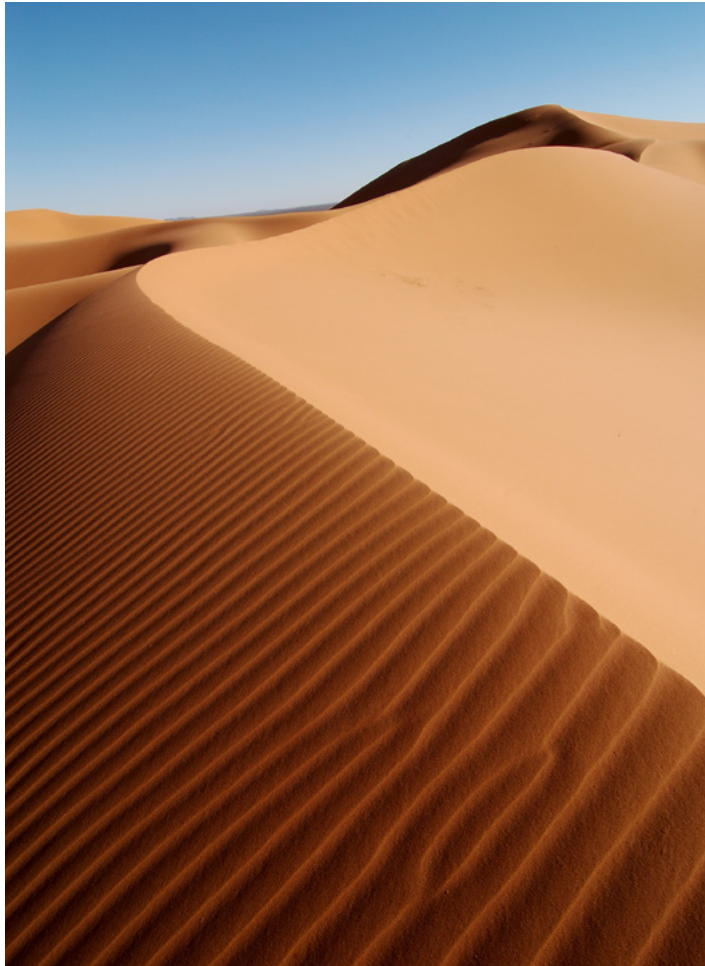
Portions of each cinematic image were then placed onto the dimensions of their respective walls as a test fit to inform the overall structure of the narrative. On the larger Storm wall, this extends from the preparation of Operation Desert Shield through the execution of Operation Desert Storm to the liberation of Kuwait. On the smaller Pivot wall, this would include the homecoming of armed service members. The design team will use the photographs as an inspiration for the creation of artistic works that convey the symbolism, emotion, and accomplishment of Operations Desert Storm and Desert Shield. It is anticipated that line drawings followed by more detailed analysis will emerge from these studies.

Commemorative Wall Concepts



The artistic composition of the bas relief wall carvings will establish an epic scale and broad scope for the visual storytelling elements, framed by quotations and texture. The images shown illustrate an initial study of style, scale, narrative, content, and materials for both the main Storm wall and the smaller Pivot wall.

Dune Texture



Common dune types in the Kuwaiti desert serve as inspiration for texture and placemaking.

Precedent Carving Style



Relief carving on textured ground



"War" - Malvina Hoffman, American War Cemetery, Epinal, France

While a specific technique has not been determined, stone carvings will be used to illustrate key components of commemoration.

Clay Sketch - Robert Eccleston



A metal sculpture of a bald eagle, the national emblem of the United States, and a falcon, a national symbol of Kuwait, would be integrated into, and soar beyond, the main Storm wall.

Precedent Eagle Sculptures - Robert Eccleston



New York State WWII Memorial



Solon Veteran's Memorial

Precedent Figurative Sculpture - James Nance



Pilot, Vietnam Air War Memorial, 9 ft bronze, Museum of Flight, Seattle



The Lance Sijan Medal of Honor Memorial, Plaza of Heroes USAF Academy, Colorado

Main Storm Wall



A cast sculpture of a falcon and eagle symbolizes liberation and leadership across a full-wall bas relief backdrop.

Main Storm Wall - Bas Relief Strip



Uncarved stone could frame the bas relief treatment of the main Storm wall.

Small Pivot Wall



Three figural sculptures would be integrated into the carved celebration and homecoming bas relief of the small Pivot wall.
Note: Upcoming figural sculpture refinements are not reflected in this document

Small Pivot Wall - Bas Relief Strip



Uncarved stone could frame the bas relief treatment of the small wall.
Note: Upcoming figural sculpture refinements are not reflected in this document



NATIONAL DESERT STORM
WAR MEMORIAL