



Welcome

Public Meeting #2 Shepherd Parkway (Reservation #421) Concept Plan

Thank you for coming to review the draft concepts for the future of Shepherd Parkway. We look forward to hearing your feedback.

6:00-6:30pm

Open House/Discussion at Boards

6:30-7:30pm

Presentation/Question & Answer

7:30-8:00pm

Open House/Discussion at Boards



Plan Goals

The key goals of the Development Concept Plan for Shepherd Parkway are to:

- Enrich existing and explore new uses and programming opportunities
- Improve the health of Shepherd Parkway, ecologically and for the surrounding community
- Address safety and maintenance concerns



Shepherd Parkway near 2nd Street looking north



Parkland looking west



*Shepherd Parkway near 2nd Street
looking west towards the Potomac River*



Fort Greble



Project Timeline

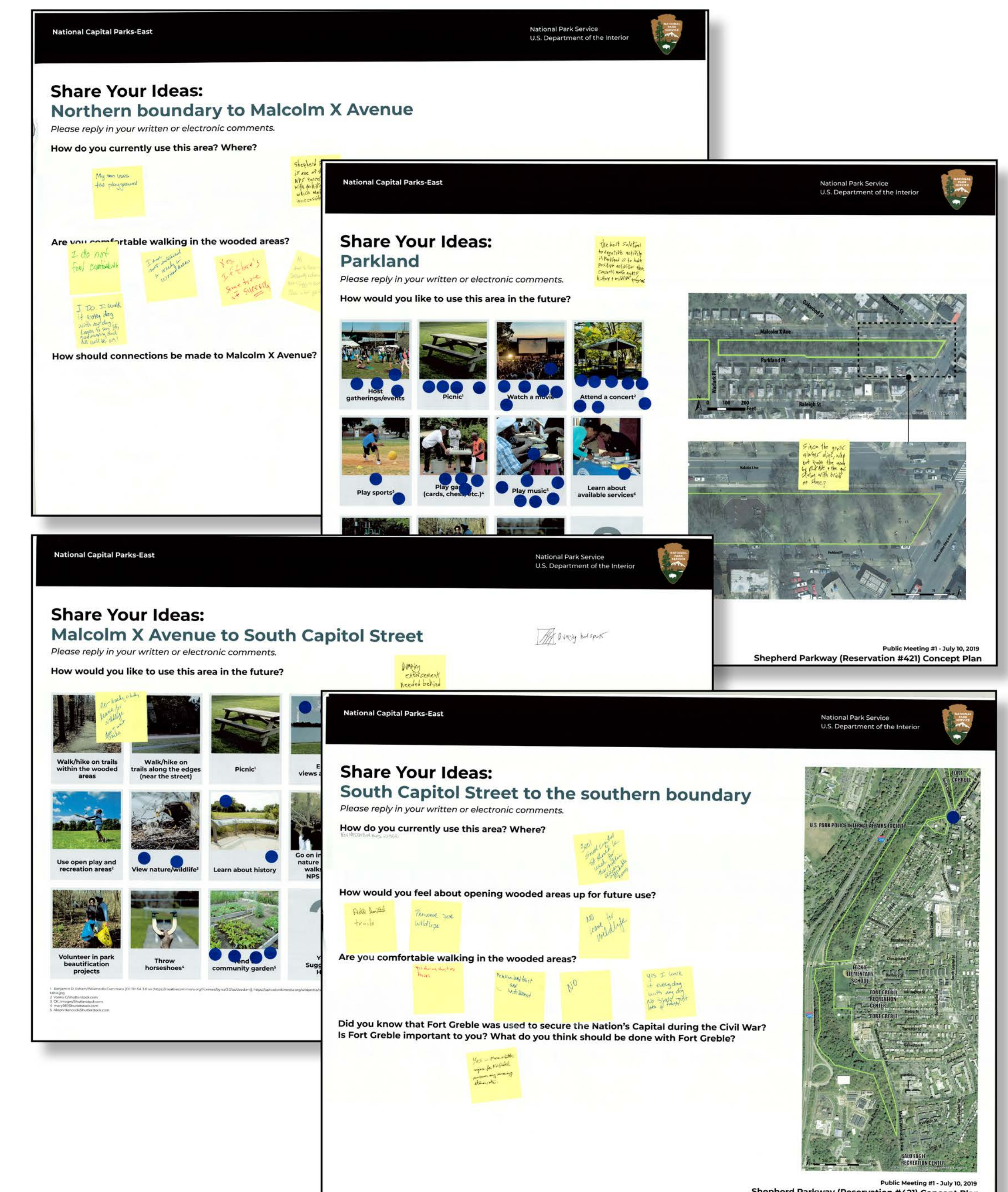




Public Comment Period #1 (June 26-July 26, 2019) Summary

- 25 attendees signed in at the public meeting; 23 pieces of correspondence were received during the public comment period
- Comments were received from neighbors and official representatives from several groups
- Commenters described:
 - Where they would like to see new connections to and within the open spaces of Shepherd Parkway
 - If they are comfortable walking in the wooded areas
 - How to prevent dumping and litter
 - What should be done with Fort Carroll and Fort Greble
 - What they would like to see at the overall park in the future, including:
 - Existing trails improved and maintained in accordance with NPS standards
 - New hiking trails
 - Connections between schools, recreation centers, and smaller park areas
 - Public programs
 - Removal and control of invasive species

- Signage to identify Shepherd Parkway and interpret the park's historical and natural significance
- Signage with contact information and statement that dumping on federal land is a federal crime
- Cameras to prevent dumping and litter





Public Comment Period #1 (June 26-July 26, 2019) Summary

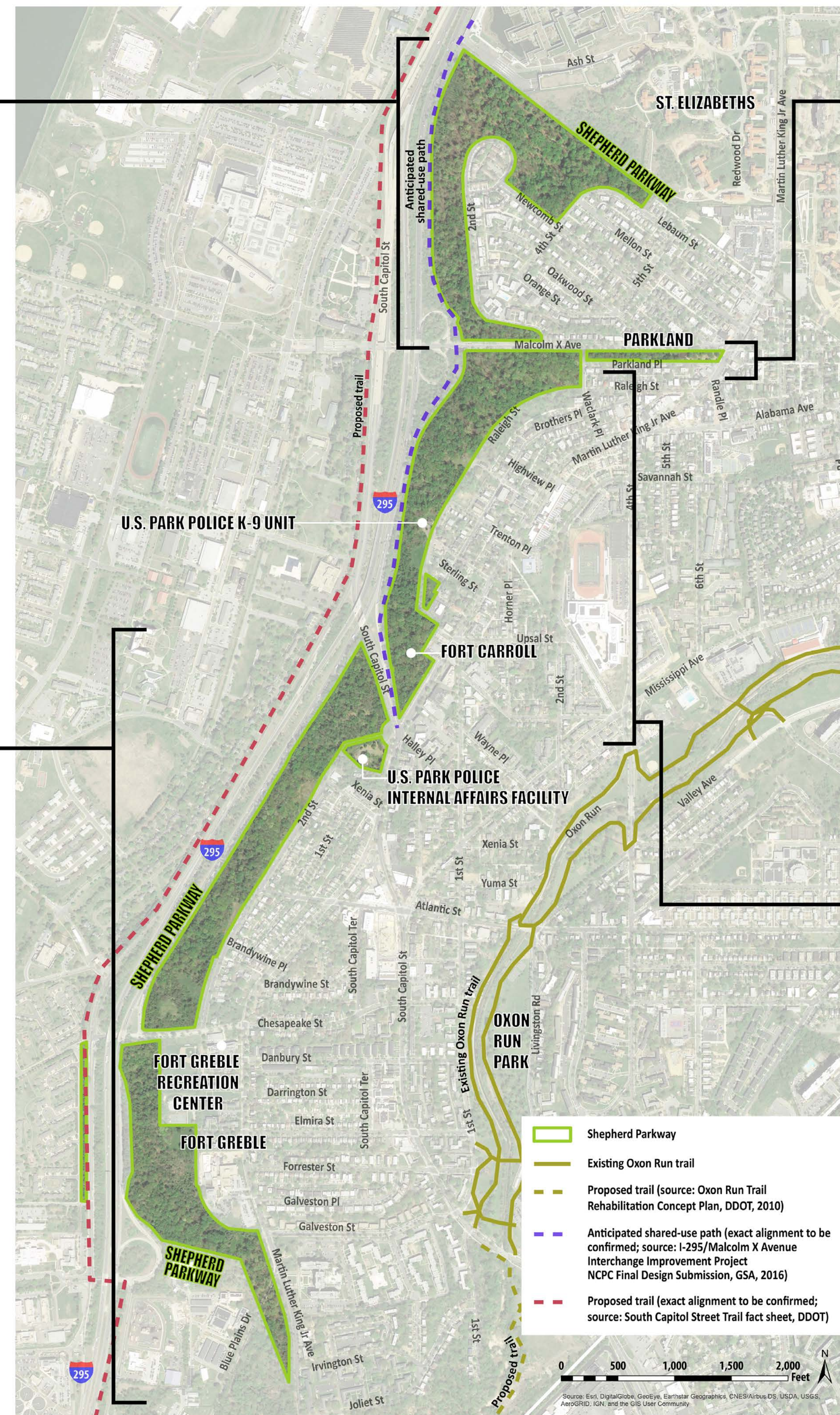
What would you like to see in this area in the future?

Northern boundary to Malcolm X Ave.

- Trails within the wooded areas and along the edges (near the street)
- Views and vistas
- Interpretive nature or history walks with an NPS ranger
- Park beautification volunteer projects

South Capitol St. to southern boundary

- Federal government transfer of 3801 South Capitol St. (U.S. Park Police Internal Affairs Facility) to the Bellevue Neighborhood Community Land Trust to be co-developed with Unfoldment, Inc.'s adjacent lot to provide affordable senior housing, a daycare center, and an African American history museum
- Community garden
- Views and vistas
- More and better signs and uncovering of remaining stone/earth at Fort Greble



Parkland

- Positive activities (e.g., concerts, movie nights, history or wildlife programs)
- Park beautification volunteer projects
- Expanded playground
- Urban garden and market
- Congress Heights Crate Complex
- Paved area near Martin Luther King Jr. Ave with brick or stone
- Lights
- Cameras to prevent dumping and litter

Malcolm X Ave. to South Capitol St.

- Community garden
- Views and vistas
- Nature and wildlife viewing
- Partial restoration, interpretive signage, and a trail at Fort Carroll

Concepts Overview

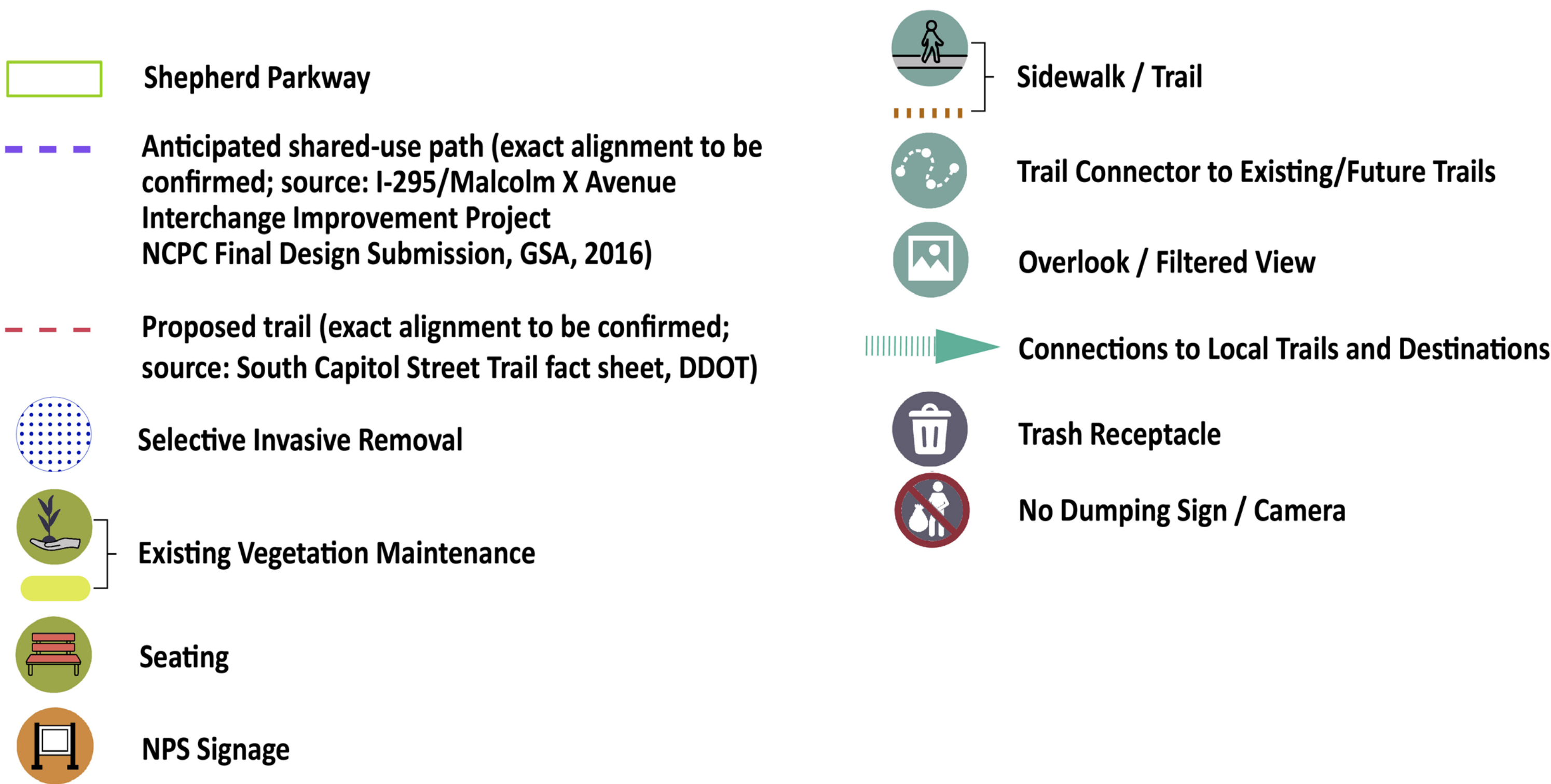
- The Shepherd Parkway concept overall focused on:
 - Overall connectivity within the parkway
 - Connectivity with the local and regional trail network
 - Specific activity nodes along the parkway
- Two concept options are presented for:
 - Parkland
 - Malcolm X Ave. to South Capitol St.
 - South Capitol St. to southern boundary





Northern boundary to Malcolm X Ave.

- Sidewalk/trail along street and parkway edge
- Sidewalk/trail connections to the anticipated shared-use path along I-295 and the Malcolm X Ave. sidewalk
- 2nd St. overlook created through selective vegetation maintenance and invasive vegetation removal
- Seating, NPS signage, no dumping signs/cameras, and trash receptacles provided at key nodes





Parkland Option 1: Flexible Recreation Areas

- Three zones:
 - Expanded children play area
 - Family-oriented outdoor space with pavilions and picnic tables
 - Entry plaza
- Programming opportunities available at family-oriented outdoor space and entry plaza
- Zones connected through pedestrian pathways





Parkland Option 2: Focused Recreation Areas

- Expanded children play areas for various age groups
- Family-oriented outdoor space with pavilions and picnic tables near play area
- Expanded entry plaza offering programming opportunities
- Play areas and entry plaza connected through pedestrian pathways



- Existing Tree
- Pedestrian Pathway
- Expanded Playground
- 2-5 Year Old Playground
- 5-12 Year Old Playground
- 2-12 Year Old Playground
- Playground Fence
- Family Oriented Outdoor Space
- Transition Area
- Entry Plaza



Malcolm X Ave. to South Capitol St.

Option 1: Natural Trail Experience

- Property along north section of Brothers Pl. retains existing views of wooded area
- Sidewalk/trail meanders through woods around Fort Carroll
- Sidewalk/trail connection between Raleigh St. and Martin Luther King, Jr. Ave.
- Flexible open green space, picnic/family gathering area, and selective vegetation maintenance along Raleigh St.
- Picnic/family gathering area and selective vegetation maintenance at Highview Pl.
- Interpretive signage and treatments at Fort Carroll
- Seating, NPS signage, no dumping signs/cameras, and trash receptacles provided at key nodes

**Sidewalk / Trail**


**Flexible Open Green Space**


**Interpretive Signage**


**Picnic / Family Gathering**


**NPS Signage**


**No Dumping Sign**


 **Shepherd Parkway**

 **Anticipated shared-use path (exact alignment to be confirmed; source: I-295/Malcolm X Avenue Interchange Improvement Project NCPD Final Design Submission, GSA, 2016)**

 **Proposed trail (exact alignment to be confirmed; source: South Capitol Street Trail fact sheet, DDOT)**

 **Existing Vegetation Maintenance**

 **Flexible Open Green Space**

 **Picnic / Family Gathering**

 **Interpretive Signage and Treatments**

 **NPS Signage**

 **Sidewalk / Trail**

 **Trail Connector to Existing/Future Trails**

 **Connections to Local Trails and Destinations**

 **Trash Receptacle**

 **No Dumping Sign / Camera**

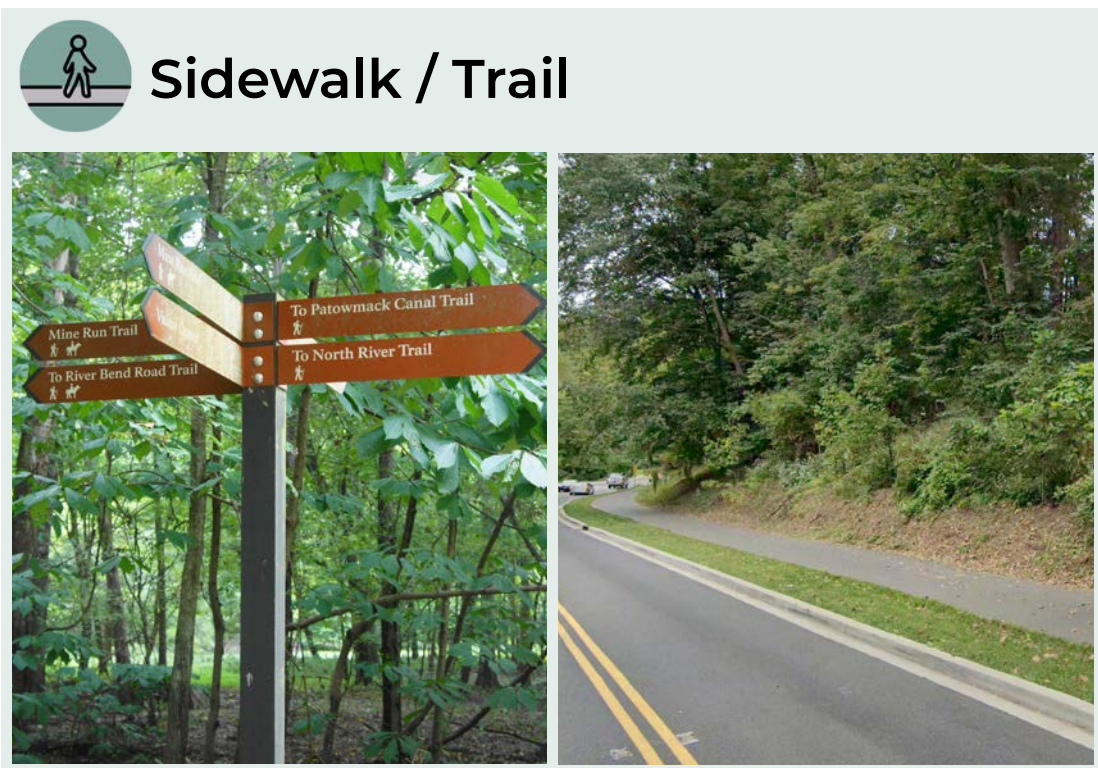




Malcolm X Ave. to South Capitol St.

Option 2: City Trail Experience

- Sidewalk/trail established along Raleigh St. right-of-way
- Sidewalk/trail along parkway edge
- Sidewalk/trail connection between Raleigh St. and Martin Luther King, Jr. Ave.
- Flexible open green space, picnic/family gathering area, and selective vegetation maintenance along Raleigh St.
- Picnic/family gathering area and selective vegetation maintenance at Highview Pl.
- Interpretive signage and treatments at Fort Carroll
- Seating, NPS signage, no dumping signs/cameras, and trash receptacles provided at key nodes



Shepherd Parkway

Anticipated shared-use path (exact alignment to be confirmed; source: I-295/Malcolm X Avenue Interchange Improvement Project NCPC Final Design Submission, GSA, 2016)

Proposed trail (exact alignment to be confirmed; source: South Capitol Street Trail fact sheet, DDOT)

Existing Vegetation Maintenance

Flexible Open Green Space

Picnic / Family Gathering

Interpretive Signage and Treatments

NPS Signage

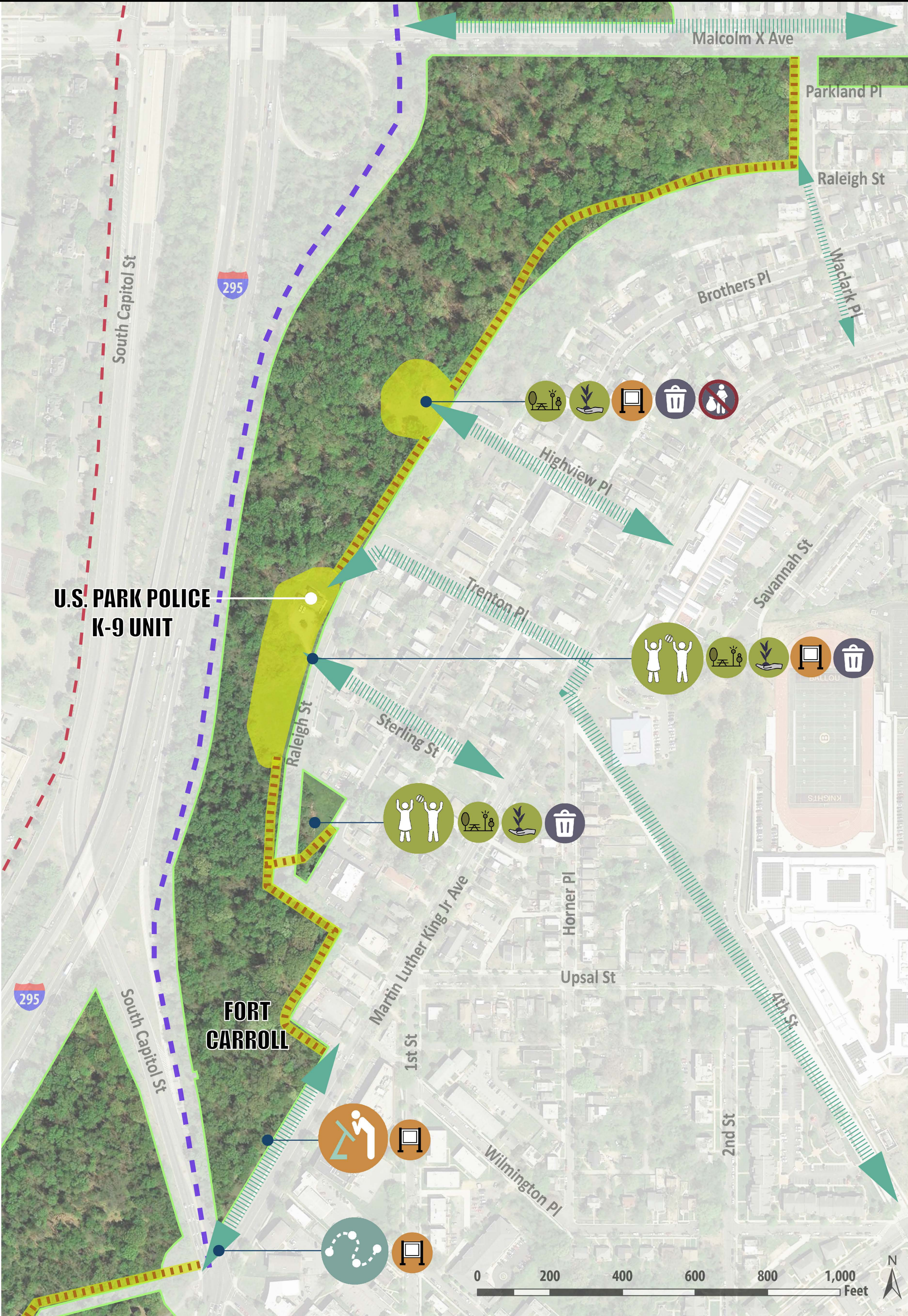
Sidewalk / Trail

Trail Connector to Existing/Future Trails

Connections to Local Trails and Destinations

Trash Receptacle

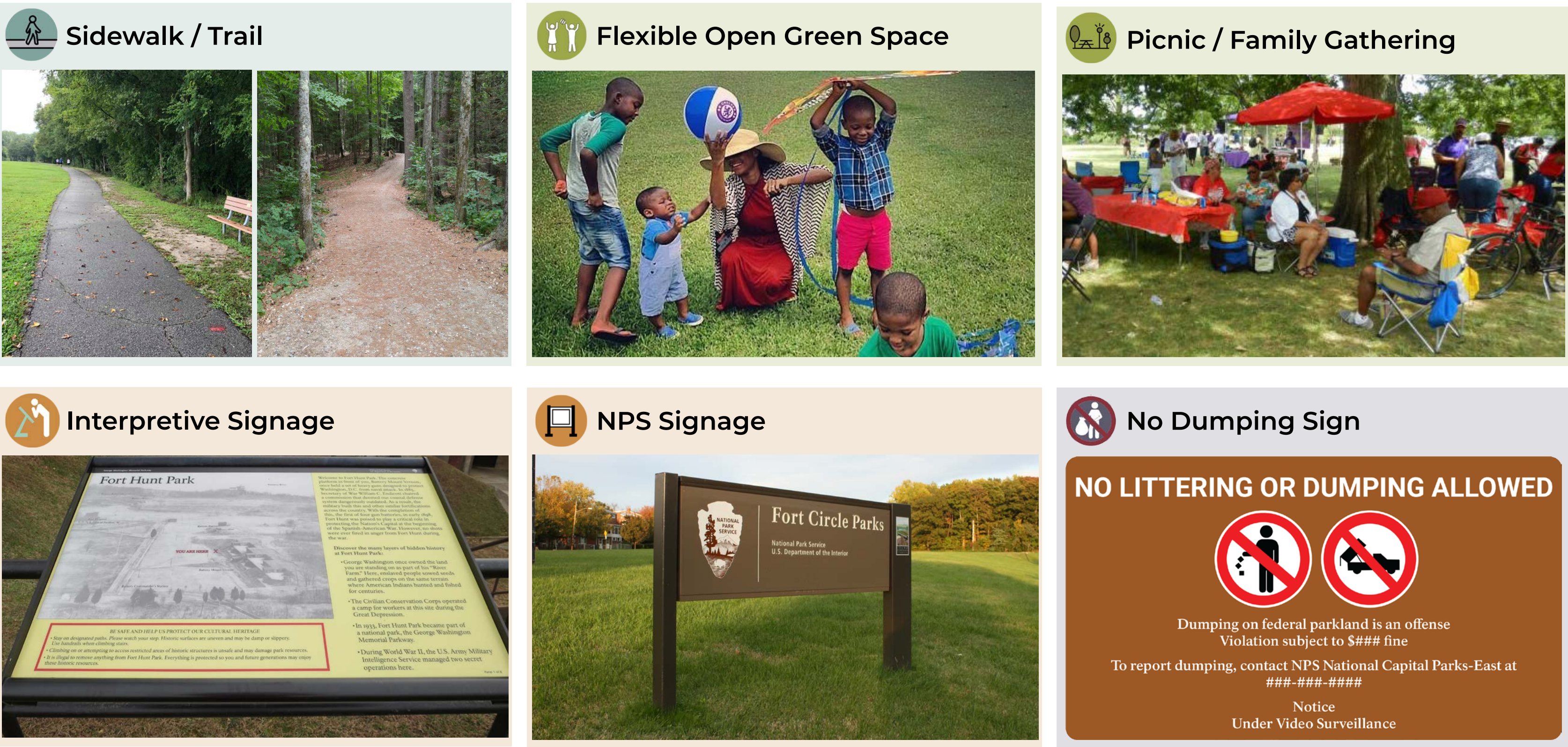
No Dumping Sign / Camera



South Capitol St. to southern boundary

Option 1: Natural Trail Experience

- Sidewalk/trail meanders through woods near street edge and around Fort Greble
- Sidewalk/trail connections to multiple existing sidewalks
- Flexible open green space, picnic/family gathering area, and selective vegetation maintenance along 2nd St.
- Interpretive signage and treatments and selective invasive vegetation removal at Fort Greble
- Seating, NPS signage, no dumping signs/cameras, and trash receptacles provided at key nodes



Shepherd Parkway

Anticipated shared-use path (exact alignment to be confirmed; source: I-295/Malcolm X Avenue Interchange Improvement Proj NCPC Final Design Submission, GSA, 2016)

Proposed trail (exact alignment to be confirmed; source: South Capitol Street Trail fact sheet, DDOT)

Selective Invasive Removal

Existing Vegetation Maintenance

Flexible Open Green Space

Picnic / Family Gathering

Eagle Nest

Interpretive Signage and Treatments

NPS Signage

Sidewalk / Trail

Trail Connector to Existing/Future Trails

Overlook / Filtered View

Connections to Local Trails and Destinations

Trash Receptacle

No Dumping Sign / Camera



South Capitol St. to southern boundary

Option 2: City Trail Experience

- Sidewalk/trail along street and parkway edge
- Sidewalk/trail connections to multiple existing sidewalks
- Flexible open green space, picnic/family gathering area, and selective vegetation maintenance along 2nd St.
- Interpretive signage and treatments and selective invasive vegetation removal at Fort Greble
- Seating, NPS signage, no dumping signs/cameras, and trash receptacles provided at key nodes

Sidewalk / Trail

Flexible Open Green Space

Picnic / Family Gathering

Interpretive Signage

NPS Signage

No Dumping Sign

Shepherd Parkway

Anticipated shared-use path (exact alignment to be confirmed; source: I-295/Malcolm X Avenue Interchange Improvement Project NCPC Final Design Submission, GSA, 2016)

Proposed trail (exact alignment to be confirmed; source: South Capitol Street Trail fact sheet, DDOT)

Selective Invasive Removal

Existing Vegetation Maintenance

Flexible Open Green Space

Picnic / Family Gathering

Eagle Nest

Interpretive Signage and Treatments

NPS Signage

Sidewalk / Trail

Trail Connector to Existing/Future Trails

Overlook / Filtered View

Connections to Local Trails and Destinations

Trash Receptacle

No Dumping Sign / Camera





How Can You Submit Comments?

Please provide feedback on the concepts.

During this Meeting

- Fill out a comment form

After this Meeting

- **Online:** Submit a comment form online by **December 7, 2019** at http://parkplanning.nps.gov/shepherdpkwy_dcp
- **Written comments can be mailed to:**

Superintendent
Attn: Shepherd Parkway Development Concept Plan
National Park Service
National Capital Parks-East
1900 Anacostia Drive SE
Washington, DC 20020

- **Mailed comments** must be postmarked by **December 7, 2019** to receive consideration