



Welcome

Public Meeting #2 Shepherd Parkway (Reservation #421) Concept Plan

6:00-6:30pm

Open House/Discussion at Boards

6:30-7:30pm

Presentation/Question & Answer

7:30-8:00pm

Open House/Discussion at Boards



Agenda

Welcome + Introductions

Background Information

Review of Concepts

Comment Submissions

Question & Answer



Plan Goals

The goals of the Concept Plan for Shepherd Parkway are to:

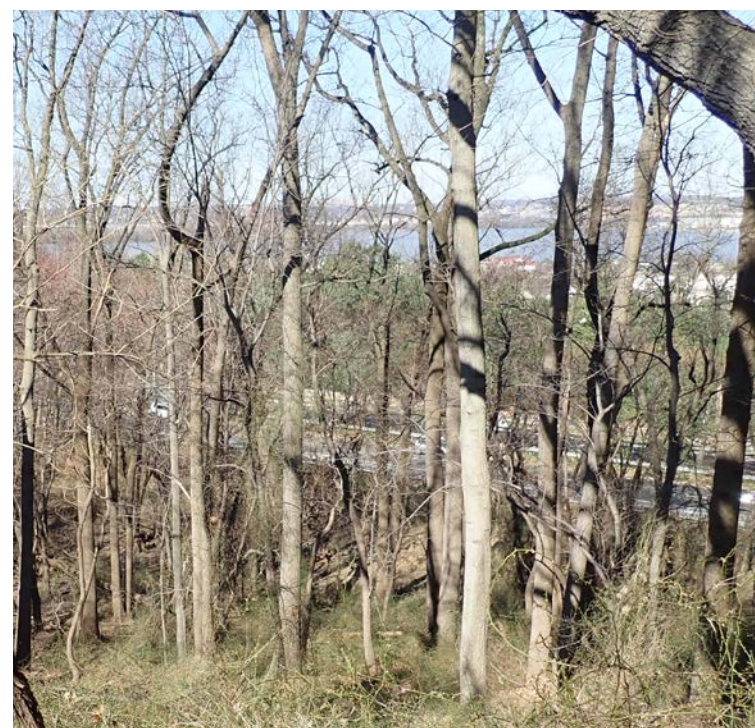
- Enrich existing and explore new uses and programming opportunities
- Improve the health of Shepherd Parkway, ecologically and for the surrounding community
- Address safety and maintenance concerns



Shepherd Parkway near 2nd Street looking north



Parkland looking west



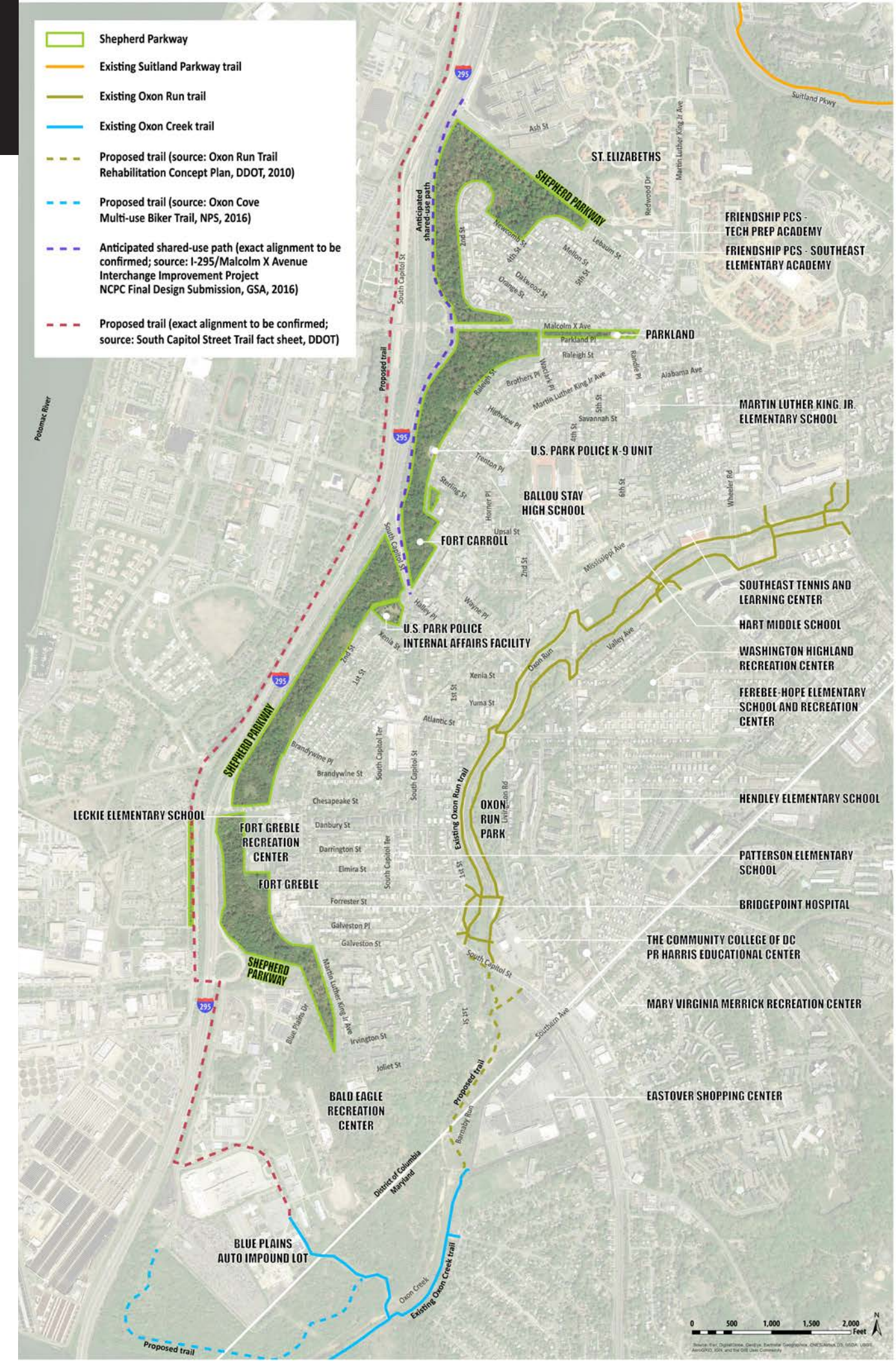
Shepherd Parkway near 2nd Street looking west towards the Potomac River



Fort Greble

Project Location

- Shepherd Parkway is bordered by I-295 to the west and developed areas to the east
- Multiple existing or planned trail connections are located within the vicinity
- Adjacent neighborhoods have multiple access points to Shepherd Parkway
- Two U.S. Park Police facilities are located within Shepherd Parkway





Project Timeline





Public Comment Period Summary

- Public comment period #1: June 26 - July 26, 2019
- 25 attendees signed in at the public meeting
- 23 pieces of correspondence were received during the public comment period
- Comments were received from:
 - Neighbors
 - Official representatives from several groups including Advisory Neighborhood Commissions, neighborhood associations, churches, and conservation/nature-focused groups



Comments Received

Commenters described:

- Where they would like to see new connections to and within the open spaces of Shepherd Parkway
- If they are comfortable walking in the wooded areas
- How to prevent dumping and litter
- How they would like to use the park in the future
- What should be done with Fort Carroll and Fort Greble

Share Your Ideas: Northern boundary to Malcolm X Avenue
Please reply in your written or electronic comments.

How do you currently use this area? Where?

Are you comfortable walking in the wooded areas?

How should connections be made to Malcolm X Avenue?

Share Your Ideas: Parkland
Please reply in your written or electronic comments.

How would you like to use this area in the future?

Share Your Ideas: Malcolm X Avenue to South Capitol Street
Please reply in your written or electronic comments.

How would you like to use this area in the future?

Share Your Ideas: South Capitol Street to the southern boundary
Please reply in your written or electronic comments.

How do you currently use this area? Where?

How would you feel about opening wooded areas up for future use?

Are you comfortable walking in the wooded areas?

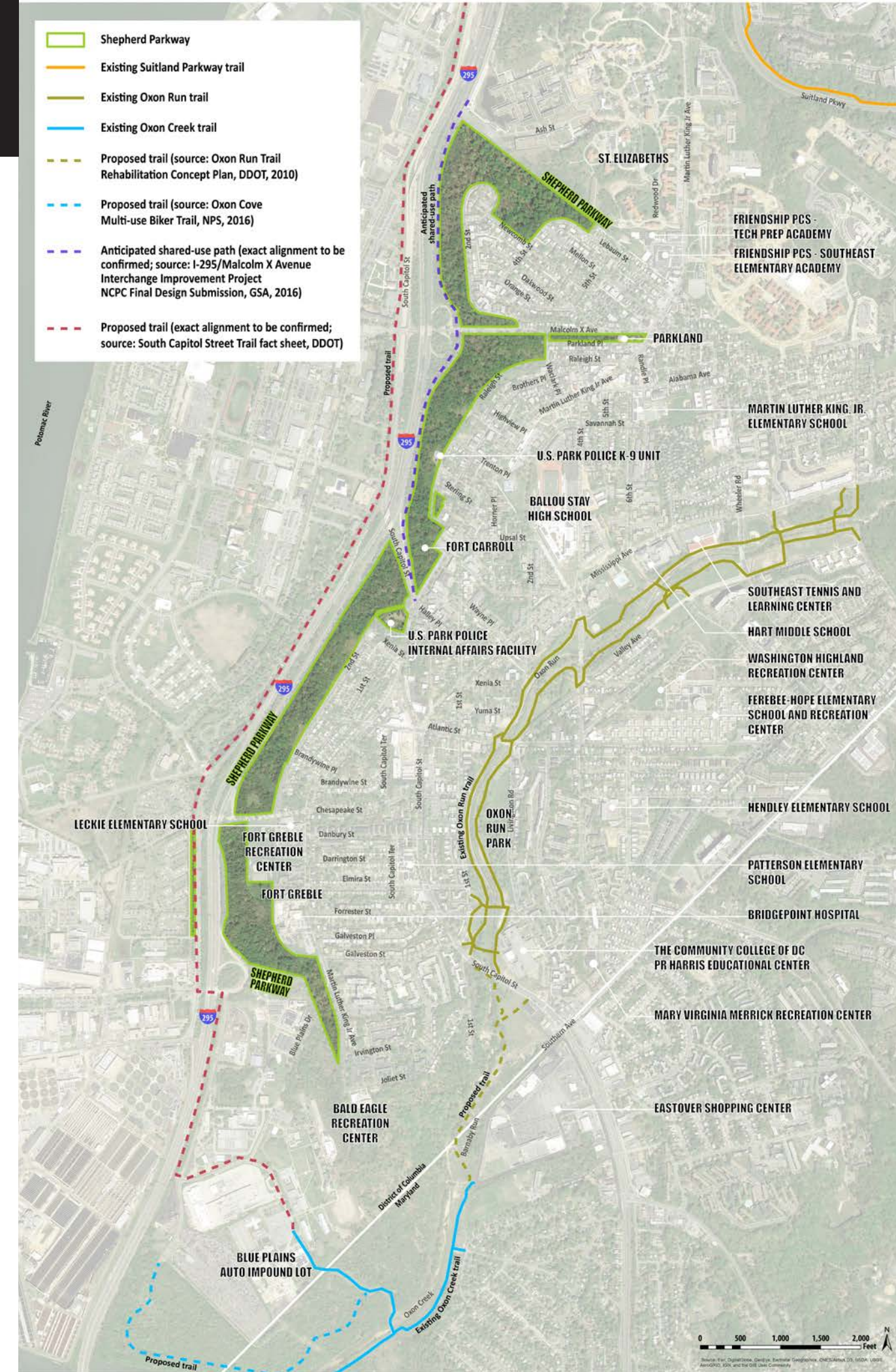
Did you know that Fort Greble was used to secure the Nation's Capital during the Civil War? Is Fort Greble important to you? What do you think should be done with Fort Greble?

Public Meeting #1 - July 10, 2019
Shepherd Parkway (Reservation #421) Concept Plan

Comments Received Overall Shepherd Parkway

What would you like to see at the park in future?

- Existing trails improved and maintained in accordance with NPS standards
- New hiking trails
- Connections between schools, recreation centers, and smaller park areas
- Public programs
- Removal and control of invasive species
- Signage to identify Shepherd Parkway and interpret the park's historical and natural significance
- Signage with contact information and statement that dumping on federal land is a federal crime
- Cameras to prevent dumping and litter





Comments Received

Northern boundary to Malcolm X Ave.

What would you like to see in this area in the future?

- Trails within the wooded areas and along the edges (near the street)
- Views and vistas
- Interpretive nature or history walks with an NPS ranger
- Park beautification volunteer projects





Comments Received

Parkland

What would you like to see in this area in the future?

- Positive activities (e.g., concerts, movie nights, history or wildlife programs)
- Park beautification volunteer projects
- Expanded playground
- Urban garden and market
- Congress Heights Crate Complex
- Paved area near Martin Luther King Jr. Ave with brick or stone
- Lights
- Cameras to prevent dumping and litter



Comments Received Malcolm X Ave. to South Capitol St.

What would you like to see in this area in the future?

- Community garden
- Views and vistas
- Nature and wildlife viewing
- Partial restoration of Fort Carroll
- Interpretive signage and trail at Fort Carroll

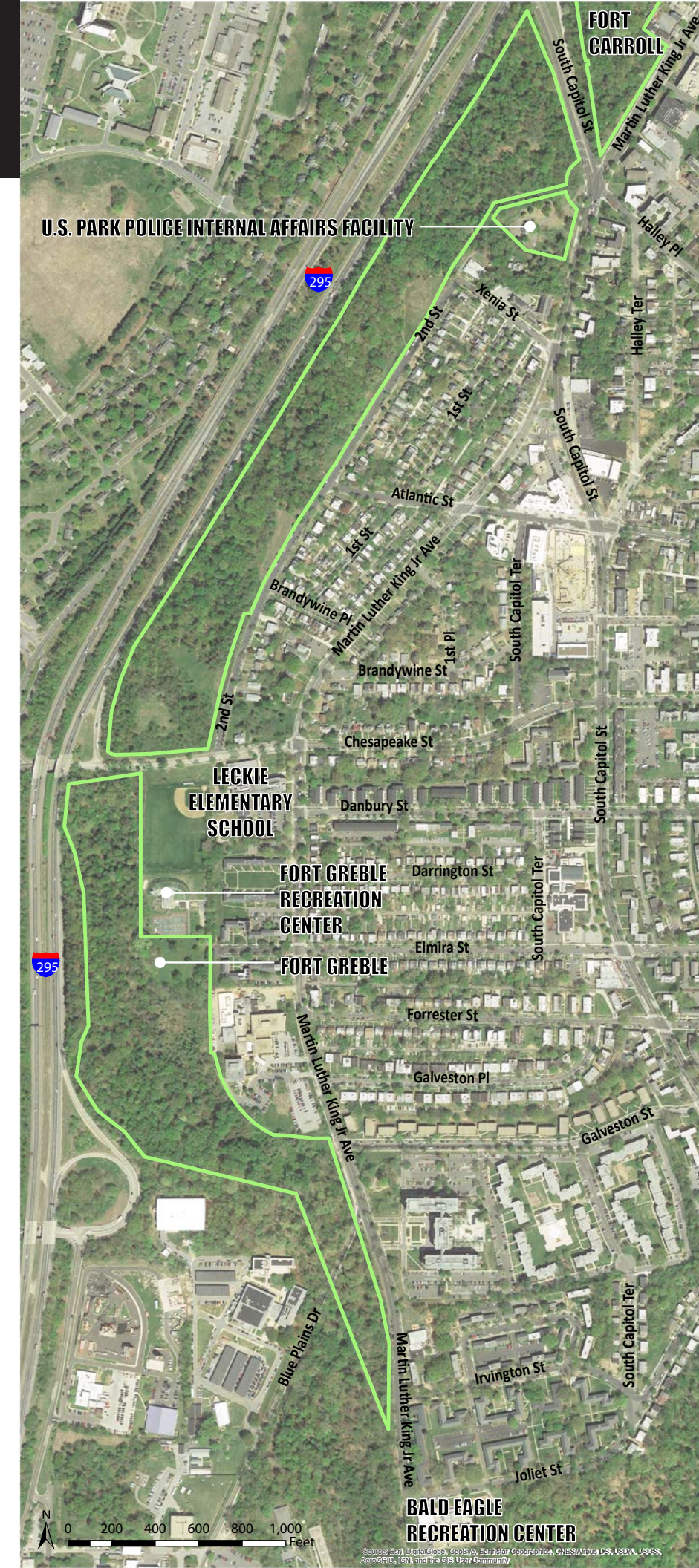


Comments Received

South Capitol St. to southern boundary

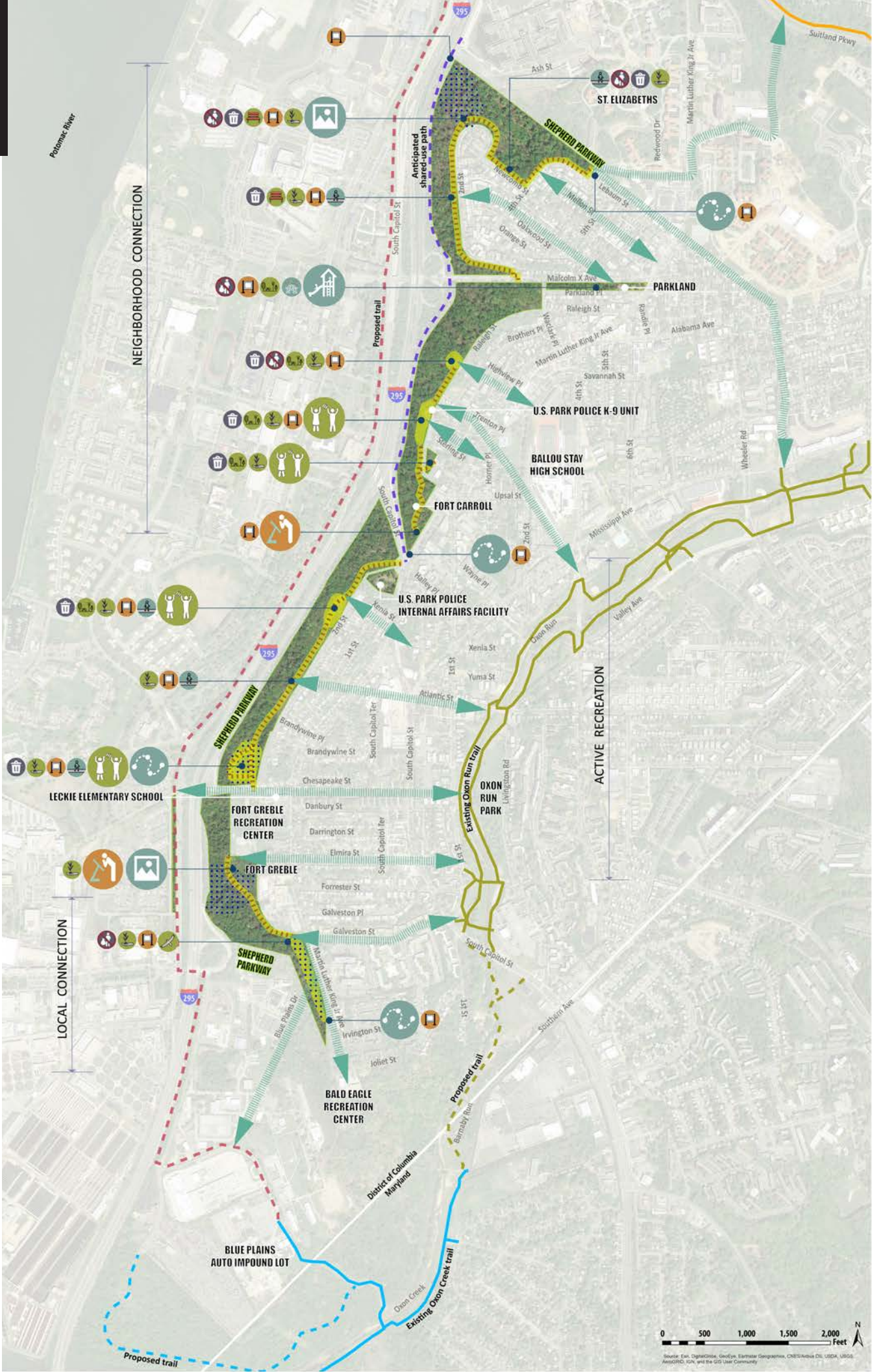
What would you like to see in this area in the future?

- Federal government transfer of 3801 South Capitol St. (U.S. Park Police Internal Affairs Facility) to the Bellevue Neighborhood Community Land Trust to be co-developed with Unfoldment, Inc.'s adjacent lot to provide affordable senior housing, a daycare center, and an African American history museum
- Community garden
- Views and vistas
- More and better signs at Fort Greble
- Uncovering remaining stone/earth at Fort Greble



Concepts Overview

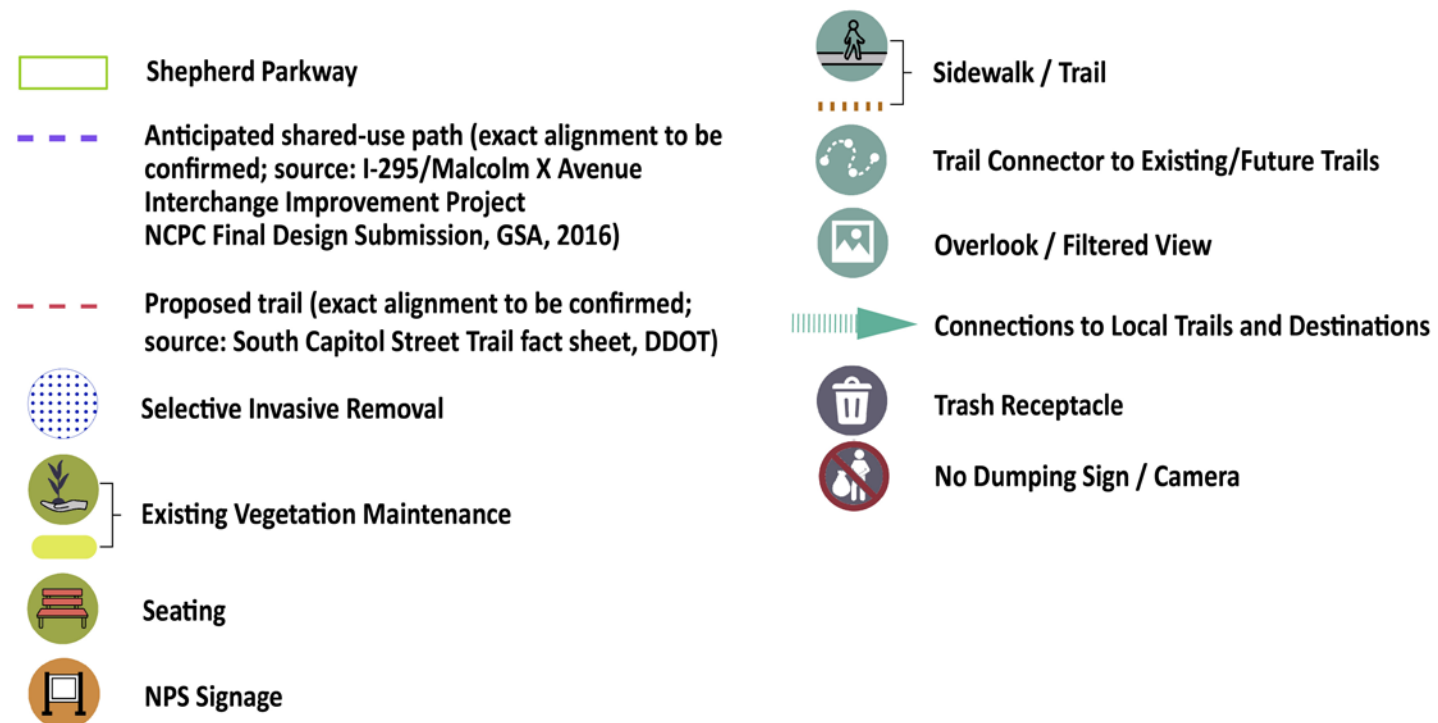
- The Shepherd Parkway concept overall focused on:
 - Overall connectivity within the parkway
 - Connectivity with the local and regional trail network
 - Specific activity nodes along the parkway
- Two concept options are presented for:
 - Parkland
 - Malcolm X Ave. to South Capitol St.
 - South Capitol St. to southern boundary





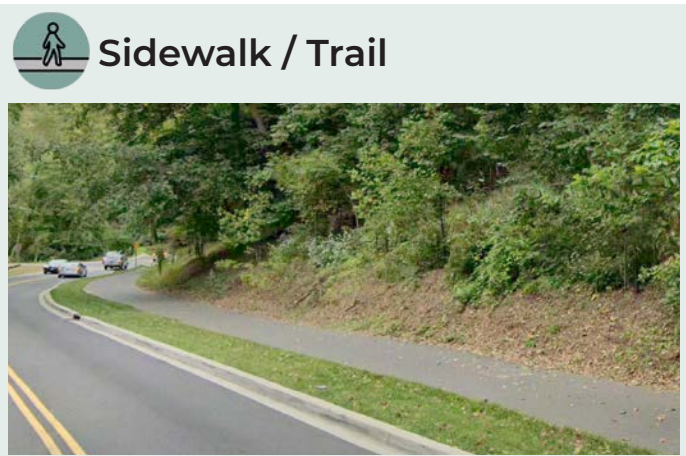
Northern boundary to Malcolm X Ave.

- Sidewalk/trail along street and parkway edge
- Sidewalk/trail connections to the anticipated shared-use path along I-295 and the Malcolm X Ave. sidewalk
- 2nd St. overlook created through selective vegetation maintenance and invasive vegetation removal
- Seating, NPS signage, no dumping signs/cameras, and trash receptacles provided at key nodes





Northern boundary to Malcolm X Ave.





Parkland Option 1: Flexible Recreation Areas



 Existing Tree



Parkland Option 1: Flexible Recreation Areas

- Three zones:
 - Expanded children play area



Parkland Option 1: Flexible Recreation Areas

- Three zones:
 - Expanded children play area
 - Family-oriented outdoor space with pavilions and picnic tables
- Programming opportunities available at family-oriented outdoor space





Parkland Option 1: Flexible Recreation Areas

- Three zones:
 - Expanded children play area
 - Family-oriented outdoor space with pavilions and picnic tables
 - Entry plaza
- Programming opportunities available at family-oriented outdoor space and entry plaza





Parkland Option 1: Flexible Recreation Areas


- Three zones:
 - Expanded children play area
 - Family-oriented outdoor space with pavilions and picnic tables
 - Entry plaza
- Programming opportunities available at family-oriented outdoor space and entry plaza
- Zones connected through pedestrian pathways





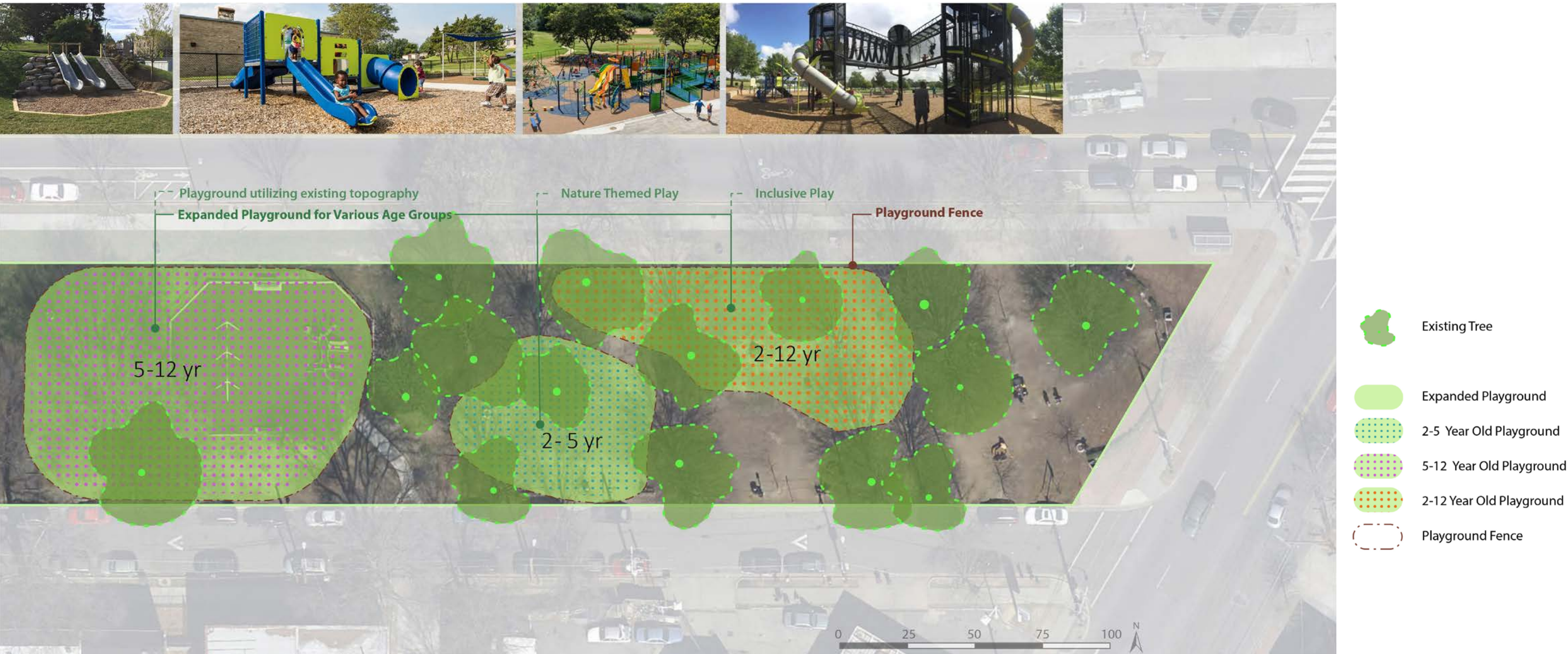
Parkland Option 2: Focused Recreation Areas



 Existing Tree

Parkland Option 2: Focused Recreation Areas

- Expanded children play areas for various age groups





Parkland Option 2: Focused Recreation Areas

- Expanded children play areas for various age groups
- Family-oriented outdoor space with pavilions and picnic tables near play area





Parkland Option 2: Focused Recreation Areas

- Expanded children play areas for various age groups
- Family-oriented outdoor space with pavilions and picnic tables near play area
- Expanded entry plaza offering programming opportunities





Parkland Option 2: Focused Recreation Areas

- Expanded children play areas for various age groups
- Family-oriented outdoor space with pavilions and picnic tables near play area
- Expanded entry plaza offering programming opportunities
- Play areas and entry plaza connected through pedestrian pathways





Parkland

Option 1



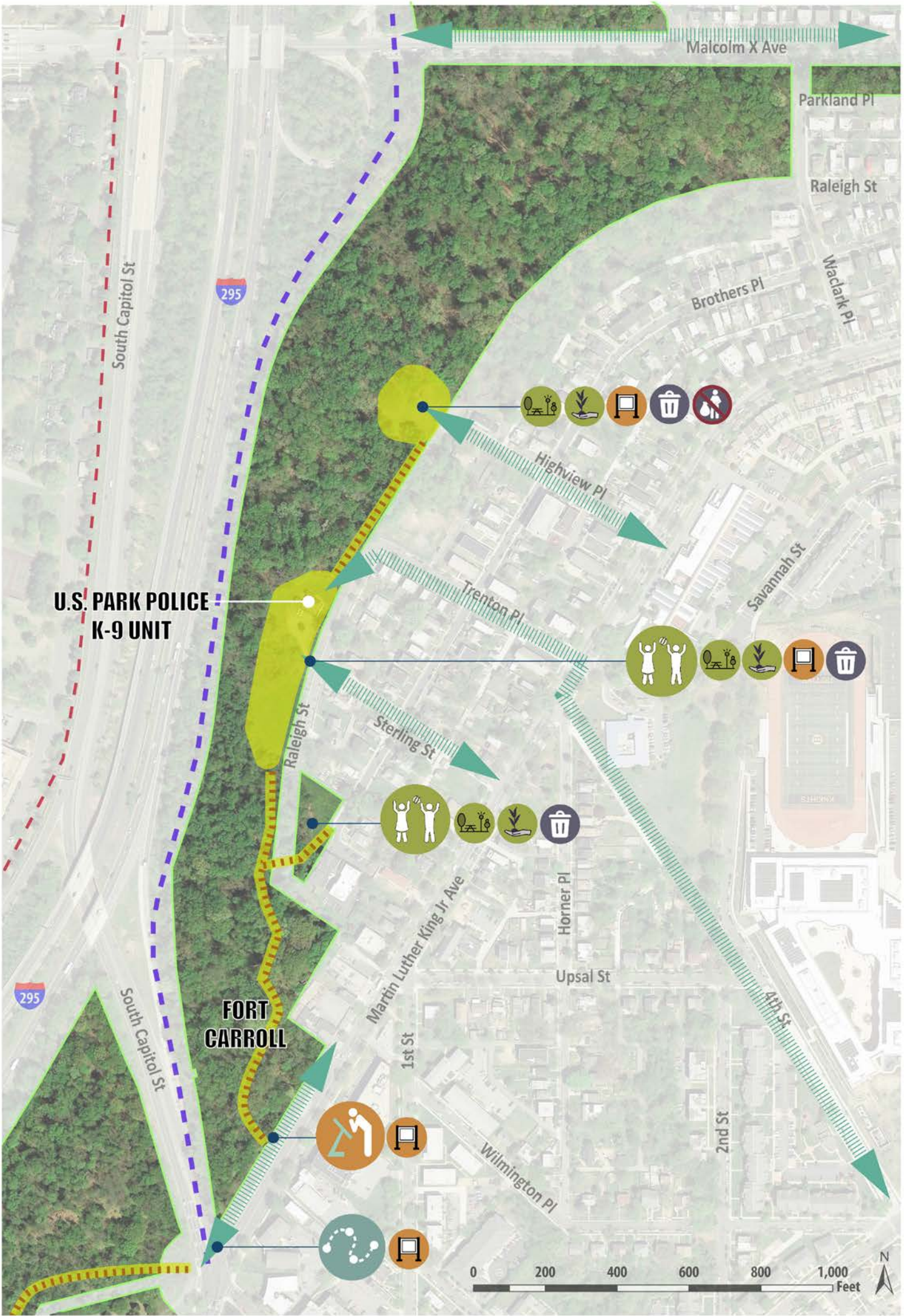
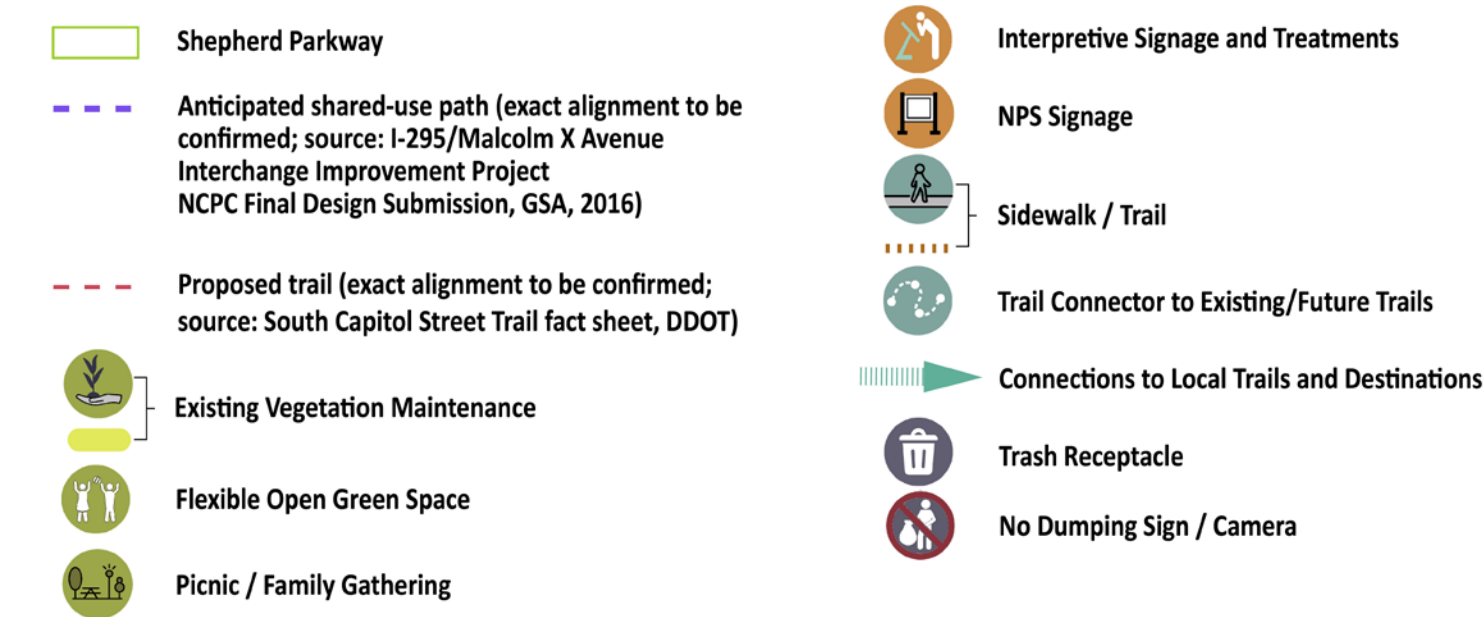
Option 2



Malcolm X Ave. to South Capitol St.


Option 1: Natural Trail Experience


- Property along north section of Brothers Pl. retains existing views of wooded area
- Sidewalk/trail meanders through woods around Fort Carroll
- Sidewalk/trail connection between Raleigh St. and Martin Luther King, Jr. Ave.
- Flexible open green space, picnic/family gathering area, and selective vegetation maintenance along Raleigh St.
- Picnic/family gathering area and selective vegetation maintenance at Highview Pl.
- Interpretive signage and treatments at Fort Carroll
- Seating, NPS signage, no dumping signs/cameras, and trash receptacles provided at key nodes



Malcolm X Ave. to South Capitol St.

Option 1: Natural Trail Experience

 Sidewalk / Trail



 Flexible Open Green Space



 Interpretive Signage



 Picnic / Family Gathering



 NPS Signage



 No Dumping Sign

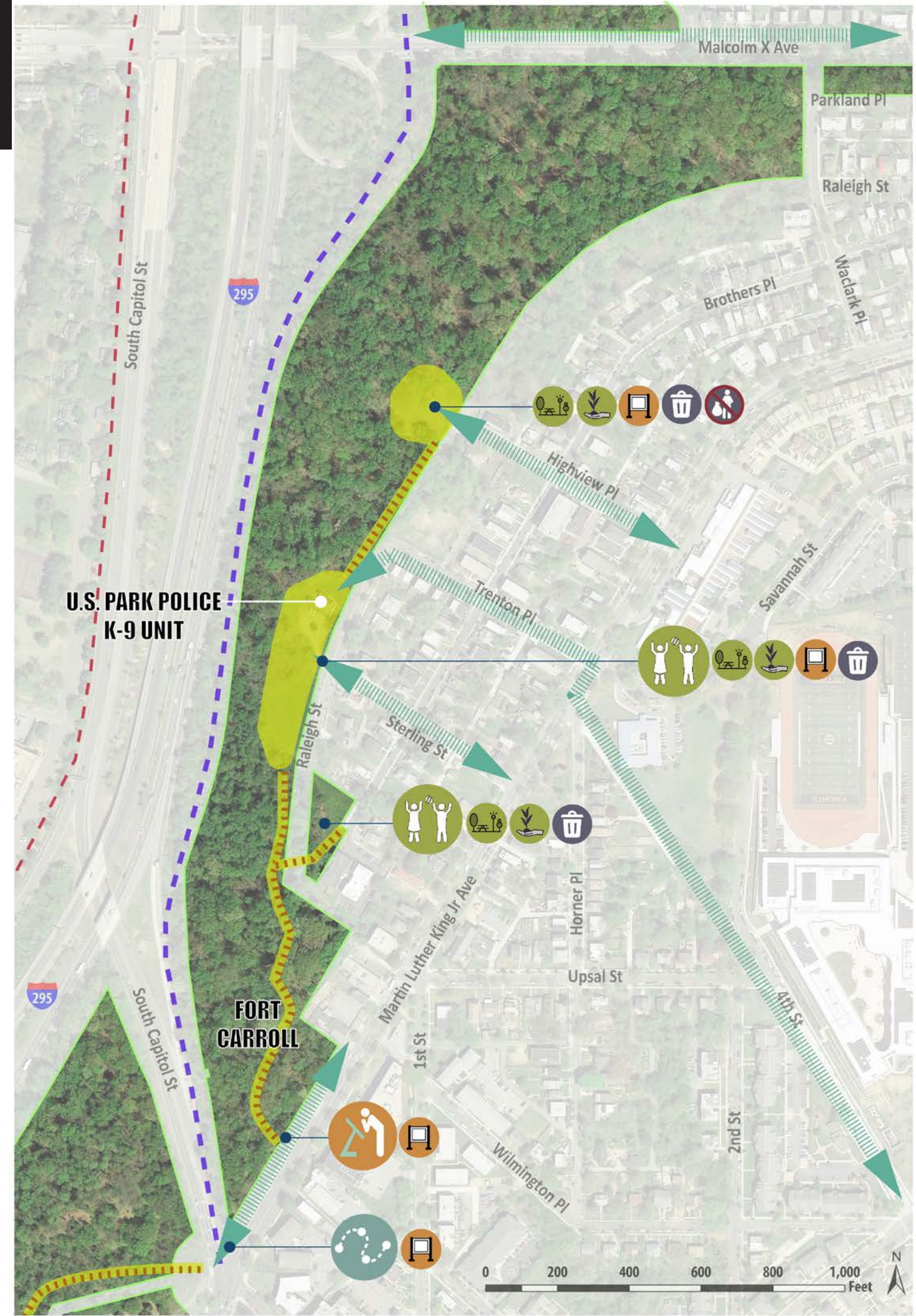
NO LITTERING OR DUMPING ALLOWED

Dumping on federal parkland is an offense
Violation subject to \$### fine

To report dumping, contact NPS National Capital Parks-East at
###-###-####

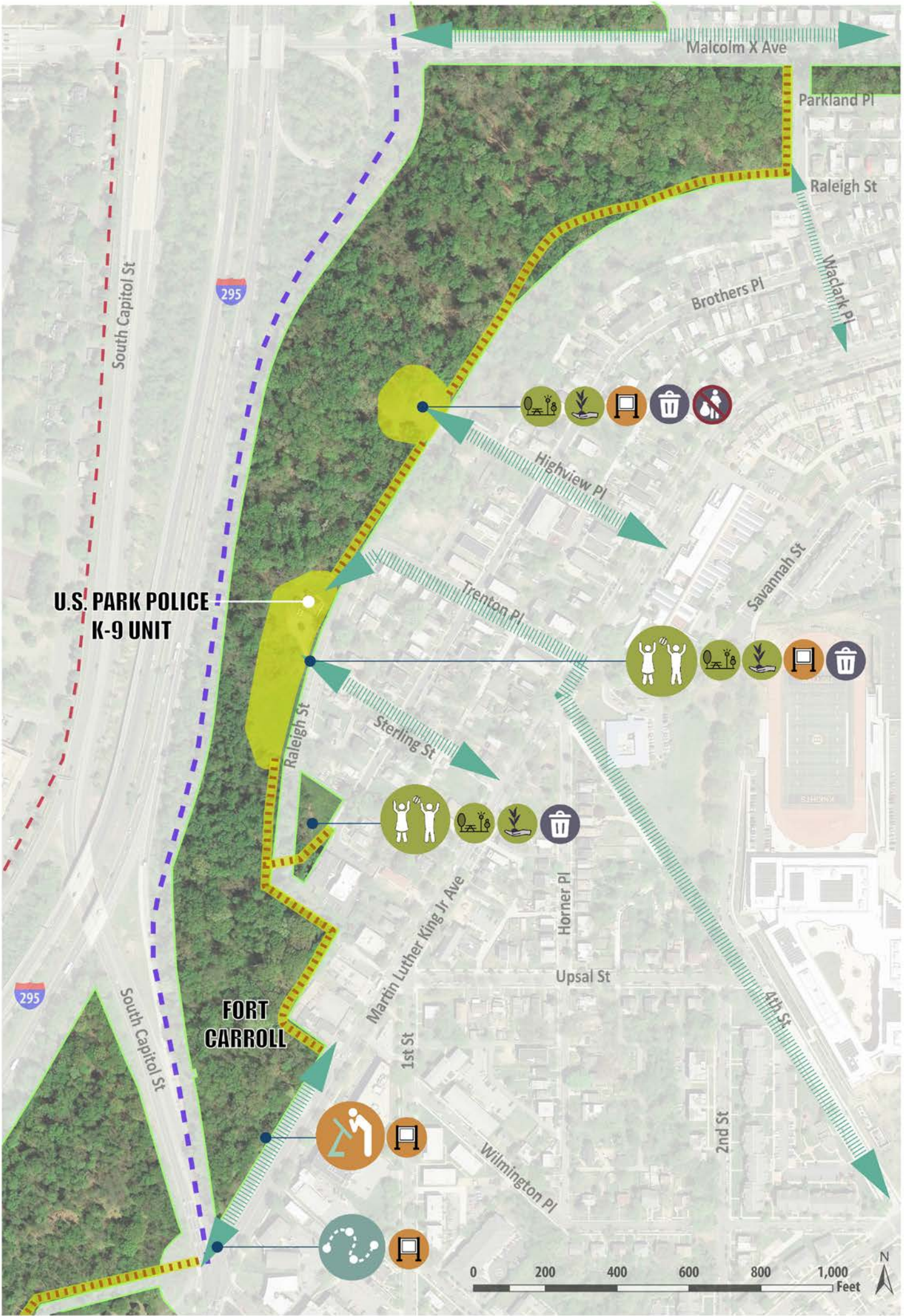
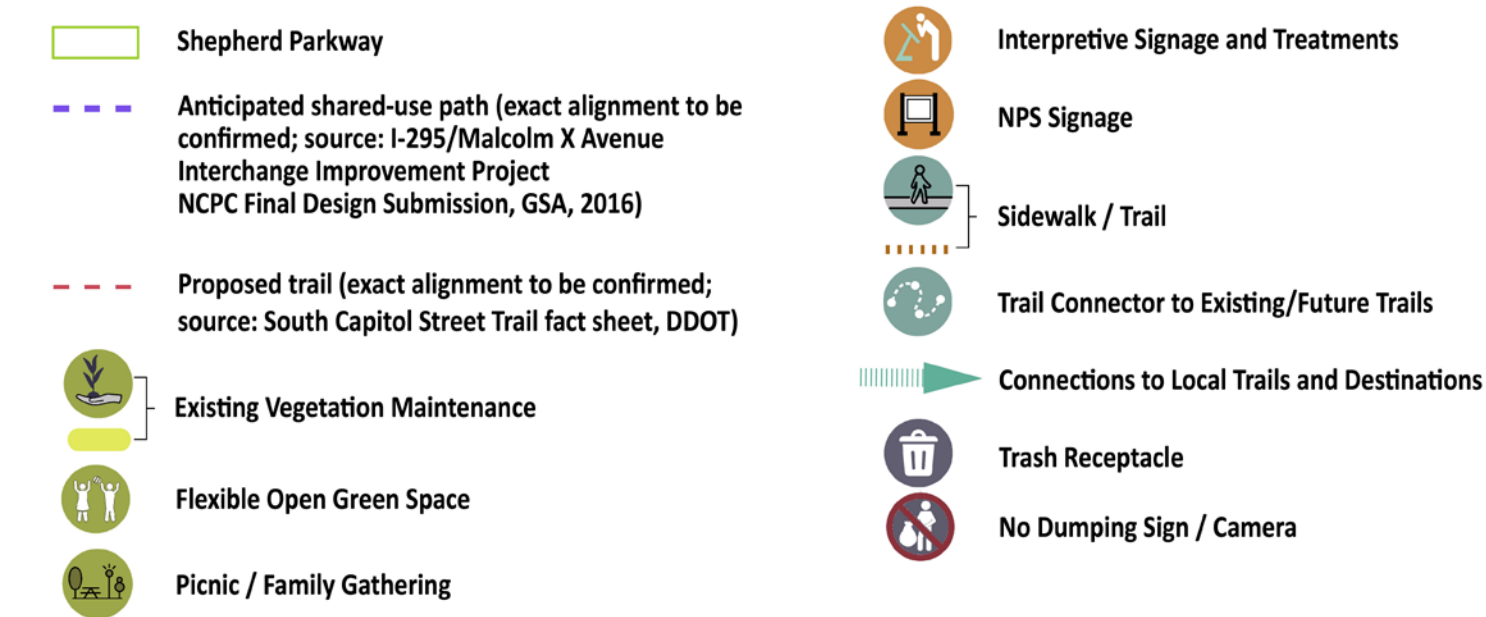
Notice
Under Video Surveillance



Malcolm X Ave. to South Capitol St.


Option 2: City Trail Experience

- Sidewalk/trail established along Raleigh St. right-of-way
- Sidewalk/trail along parkway edge
- Sidewalk/trail connection between Raleigh St. and Martin Luther King, Jr. Ave.
- Flexible open green space, picnic/family gathering area, and selective vegetation maintenance along Raleigh St.
- Picnic/family gathering area and selective vegetation maintenance at Highview Pl.
- Interpretive signage and treatments at Fort Carroll
- Seating, NPS signage, no dumping signs/cameras, and trash receptacles provided at key nodes



Malcolm X Ave. to South Capitol St.

Option 2: City Trail Experience

**Sidewalk / Trail**



**Flexible Open Green Space**





**Interpretive Signage**



**Picnic / Family Gathering**

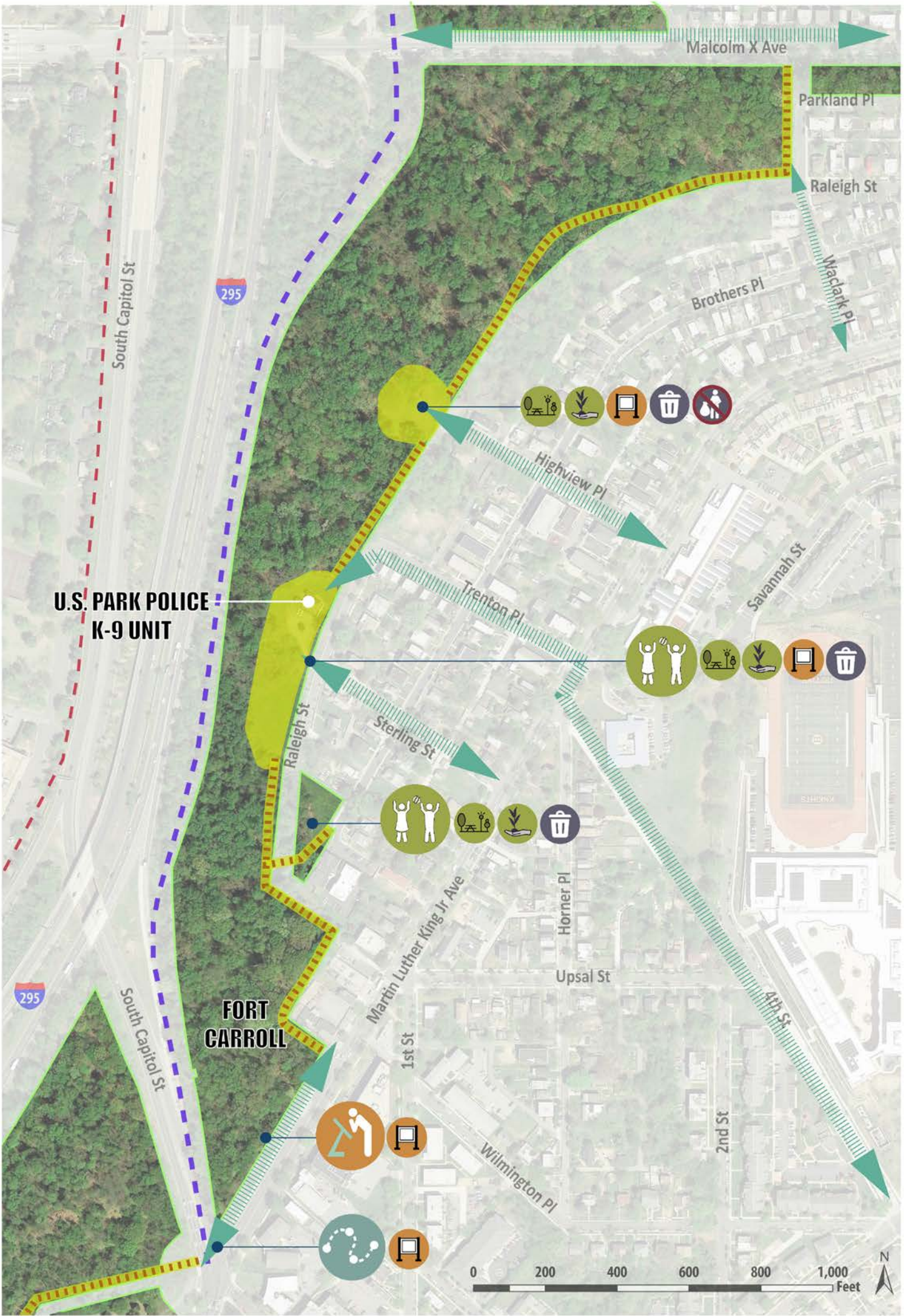


**NPS Signage**



**No Dumping Sign**

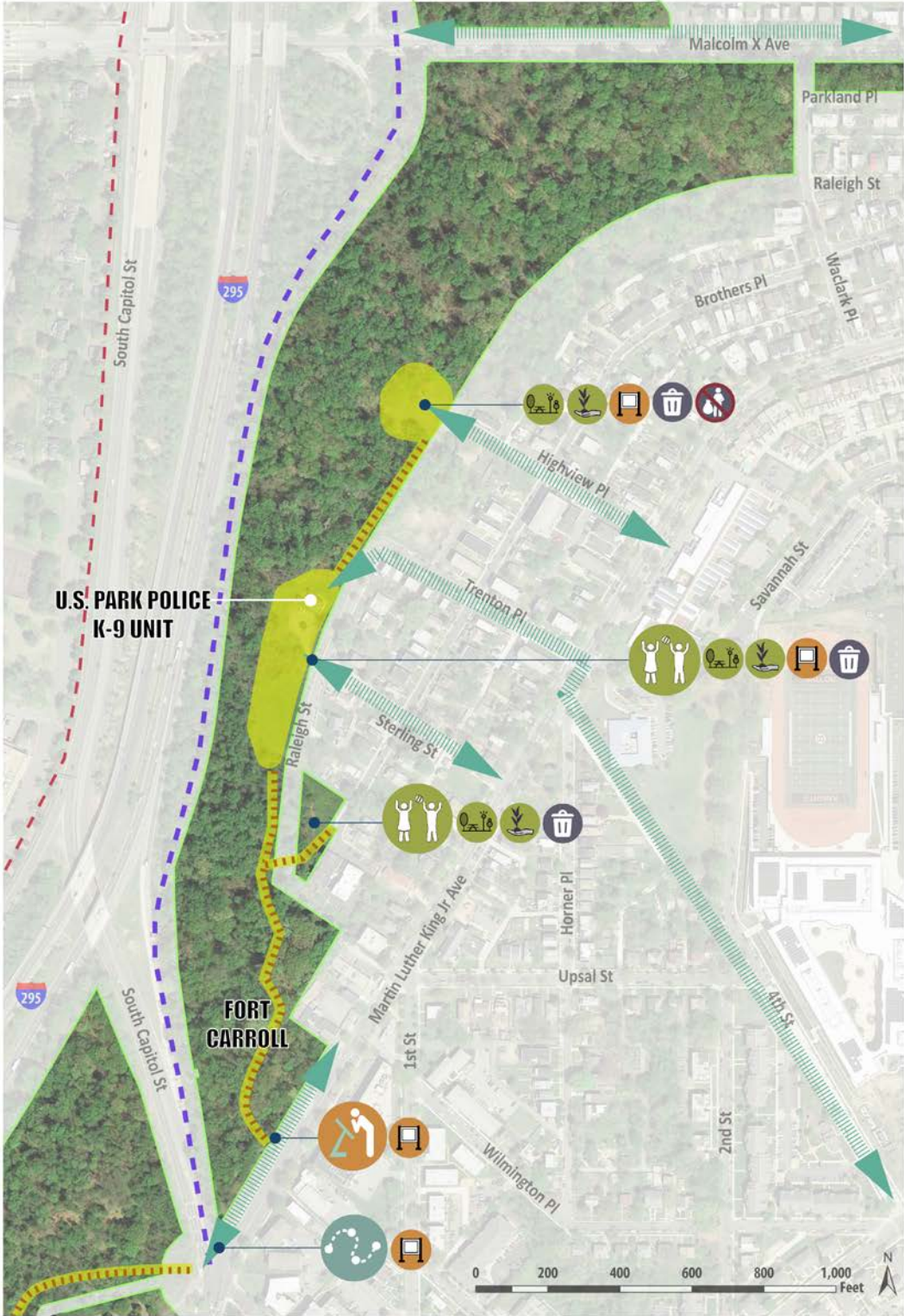




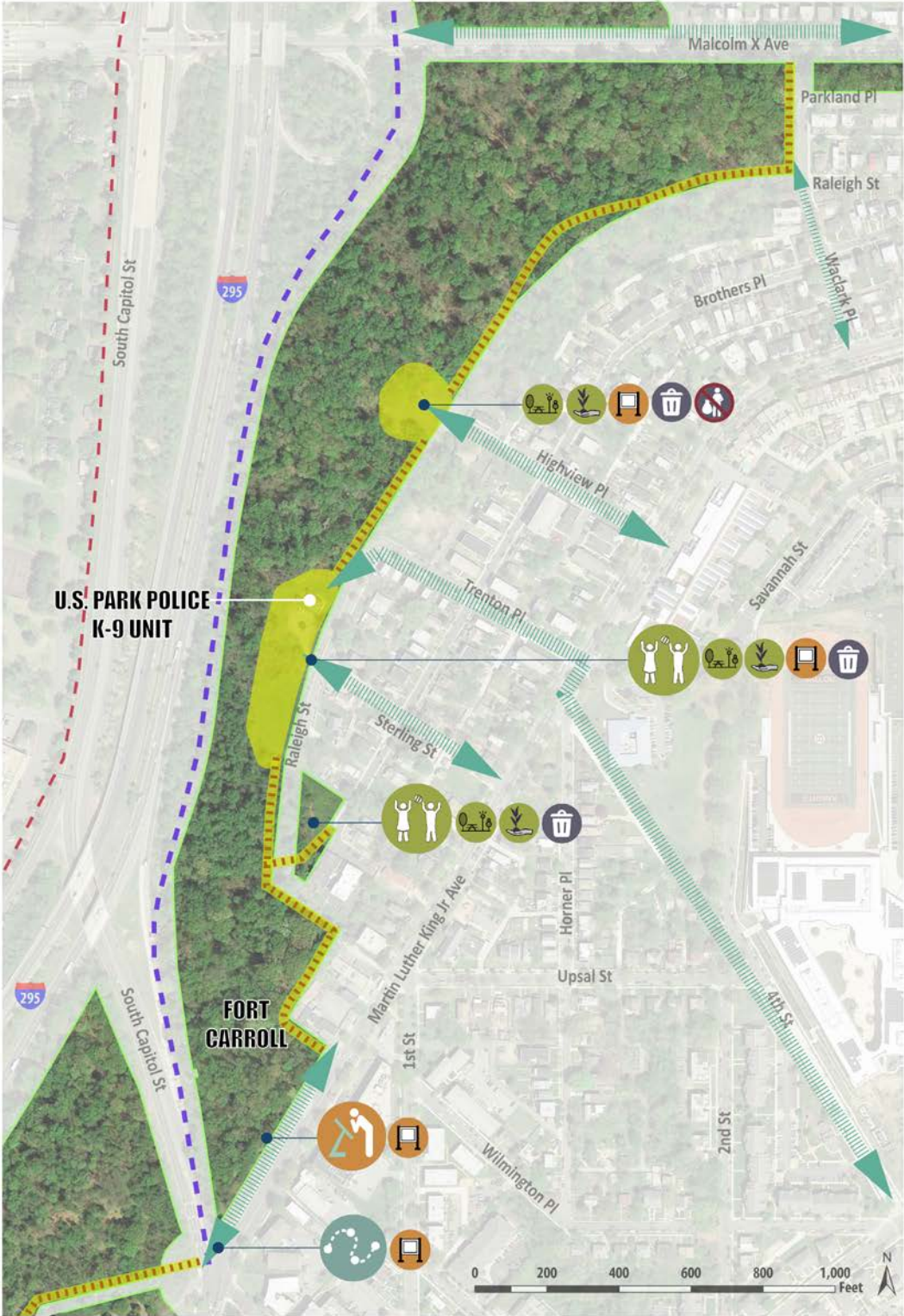


Malcolm X Ave. to South Capitol St.

Option 1:
Natural Trail
Experience



Option 2:
City Trail
Experience



South Capitol St. to southern boundary

Option 1: Natural Trail Experience

- Sidewalk/trail meanders through woods near street edge and around Fort Greble
- Sidewalk/trail connections to multiple existing sidewalks
- Flexible open green space, picnic/family gathering area, and selective vegetation maintenance along 2nd St.
- Interpretive signage and treatments and selective invasive vegetation removal at Fort Greble
- Seating, NPS signage, no dumping signs/cameras, and trash receptacles provided at key nodes



Shepherd Parkway



Anticipated shared-use path (exact alignment to be confirmed; source: I-295/Malcolm X Avenue Interchange Improvement Project NCPD Final Design Submission, GSA, 2016)



Proposed trail (exact alignment to be confirmed; source: South Capitol Street Trail fact sheet, DDOT)



Selective Invasive Removal



Existing Vegetation Maintenance



Flexible Open Green Space



Picnic / Family Gathering



Eagle Nest



Interpretive Signage and Treatments



NPS Signage



Sidewalk / Trail



Trail Connector to Existing/Future Trails



Overlook / Filtered View



Connections to Local Trails and Destinations



Trash Receptacle





No Dumping Sign / Camera



South Capitol St. to southern boundary

Option 1: Natural Trail Experience

**Sidewalk / Trail**



**Flexible Open Green Space**



**Interpretive Signage**



**Picnic / Family Gathering**



**NPS Signage**



**No Dumping Sign**





South Capitol St. to southern boundary

Option 2: City Trail Experience

- Sidewalk/trail along street and parkway edge
- Sidewalk/trail connections to multiple existing sidewalks
- Flexible open green space, picnic/family gathering area, and selective vegetation maintenance along 2nd St.
- Interpretive signage and treatments and selective invasive vegetation removal at Fort Greble
- Seating, NPS signage, no dumping signs/cameras, and trash receptacles provided at key nodes



South Capitol St. to southern boundary

Option 2: City Trail Experience

 Sidewalk / Trail



 Flexible Open Green Space




 Interpretive Signage



 Picnic / Family Gathering



 NPS Signage



 No Dumping Sign







South Capitol St. to southern boundary

Option 1:
Natural Trail
Experience



Option 2:
City Trail
Experience





How Can You Submit Comments?

Please provide feedback on the concepts.

During this Meeting

- Fill out a comment form

After this Meeting

- **Online:** Submit a comment form online by **December 7, 2019** at http://parkplanning.nps.gov/shepherdpkwy_dcp
- **Written comments can be mailed to:**

Superintendent
Attn: Shepherd Parkway Development Concept Plan
National Park Service
National Capital Parks-East
1900 Anacostia Drive SE
Washington, DC 20020
- **Mailed comments** must be postmarked by **December 7, 2019** to receive consideration



Question & Answer

- Identify yourself prior to asking questions
- Be courteous of others (don't interrupt) and avoid personal attacks
- Limit your questions to the topic being discussed
- We expect to hear from all attendees; don't just be an observer



Thank You!

7:30-8:00pm

Open House/Discussion at Boards