



Korean War Veterans Memorial Wall of Remembrance

Section 106 Consulting Parties Meeting

October 15, 2019

Agenda

Introductions

Overview of Undertaking

Site History

Review of Draft Area of Potential Effect

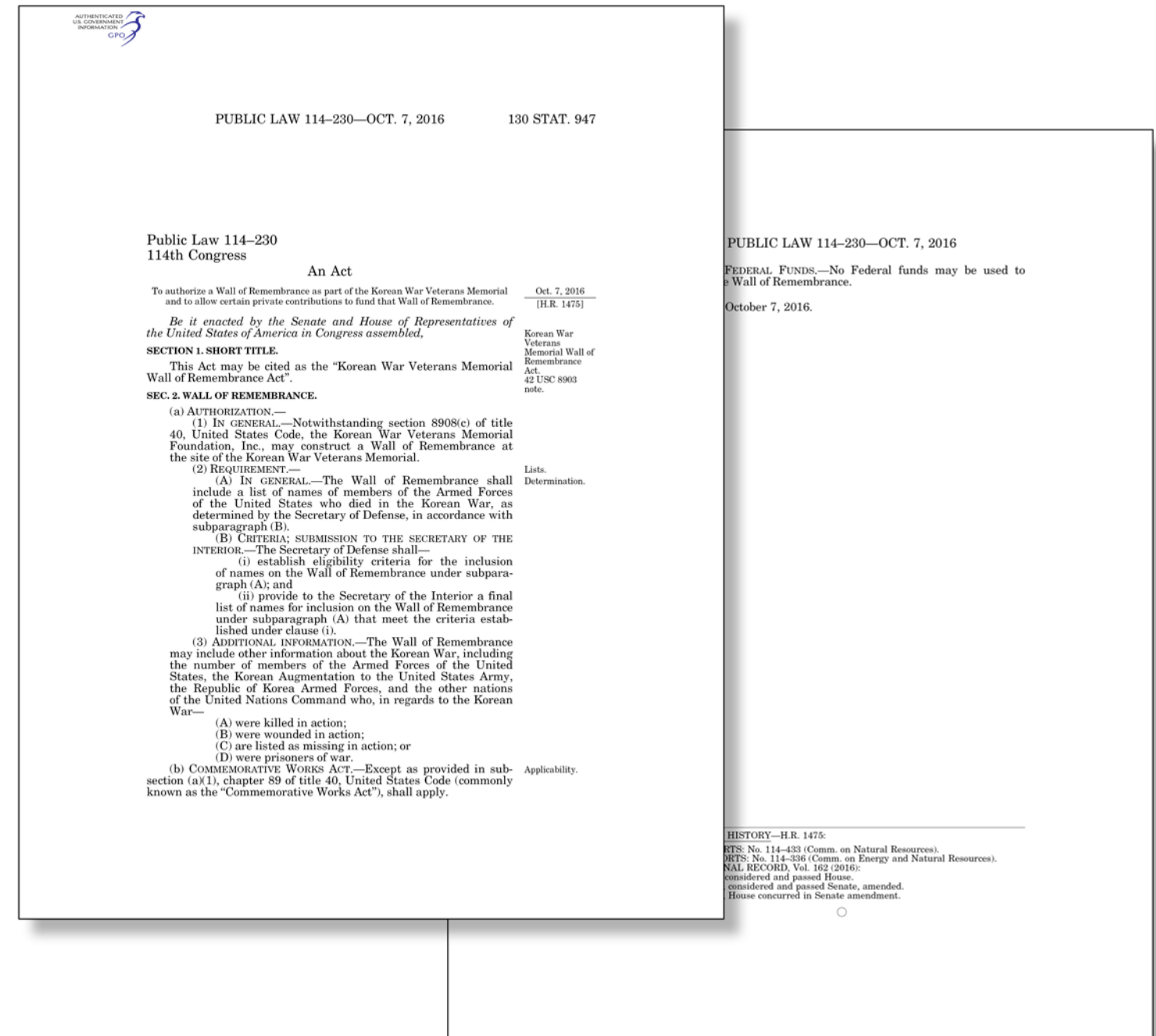
Options

Discussion

Project Status + Next Steps

Authorizing Legislation

- In 2016, Congress authorized a Wall of Remembrance at the site of the Korean War Veterans Memorial.
- The wall will include a list of names of members of the Armed Forces of the United States who died in the Korean War.
- The wall may also include other information about the Korean War, including the number of those from the United States and other countries who were killed, wounded, missing in action, or prisoners of war.
- The wall will also include the number of those from the Korean Augmentation to the United States Army who were killed, wounded, missing in action, or prisoners of war.

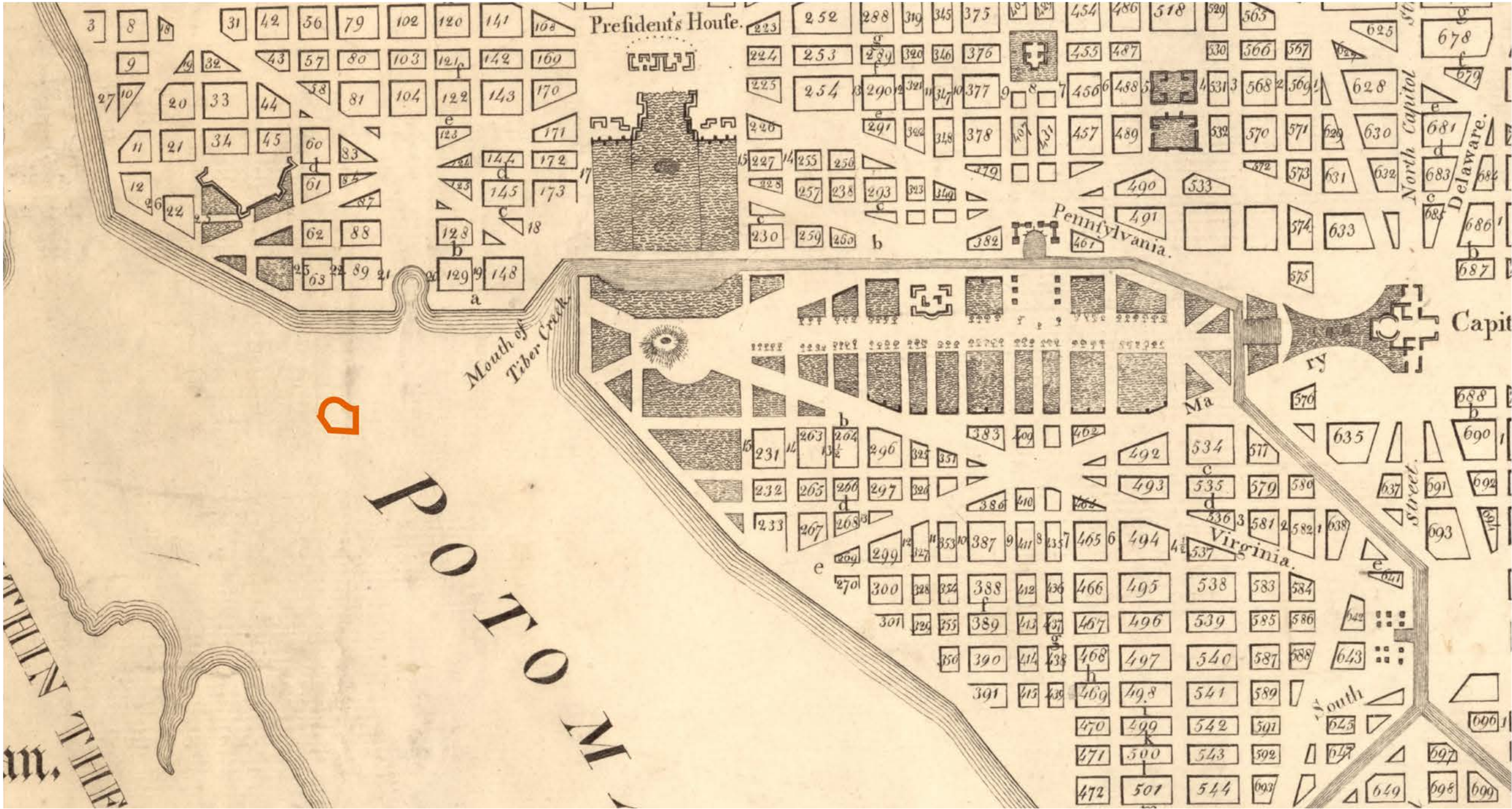


Site Context

- The project area is located on NPS land in Ash Woods.
- The National Mall and Memorial Parks (NAMA) administers the project area.
- The project area is located in the National Mall and the East and West Potomac Parks Historic Districts.



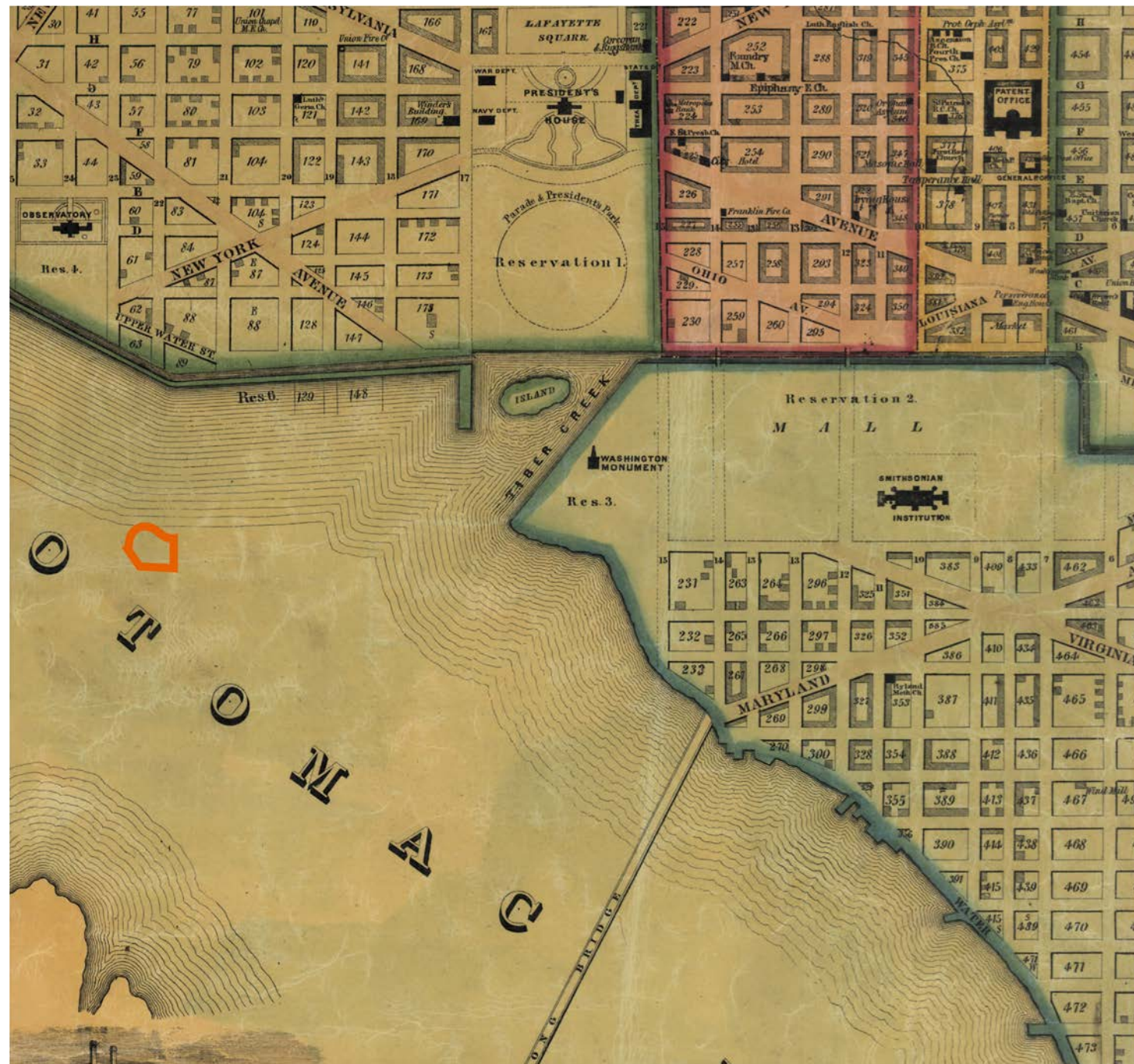
Site History



1792¹

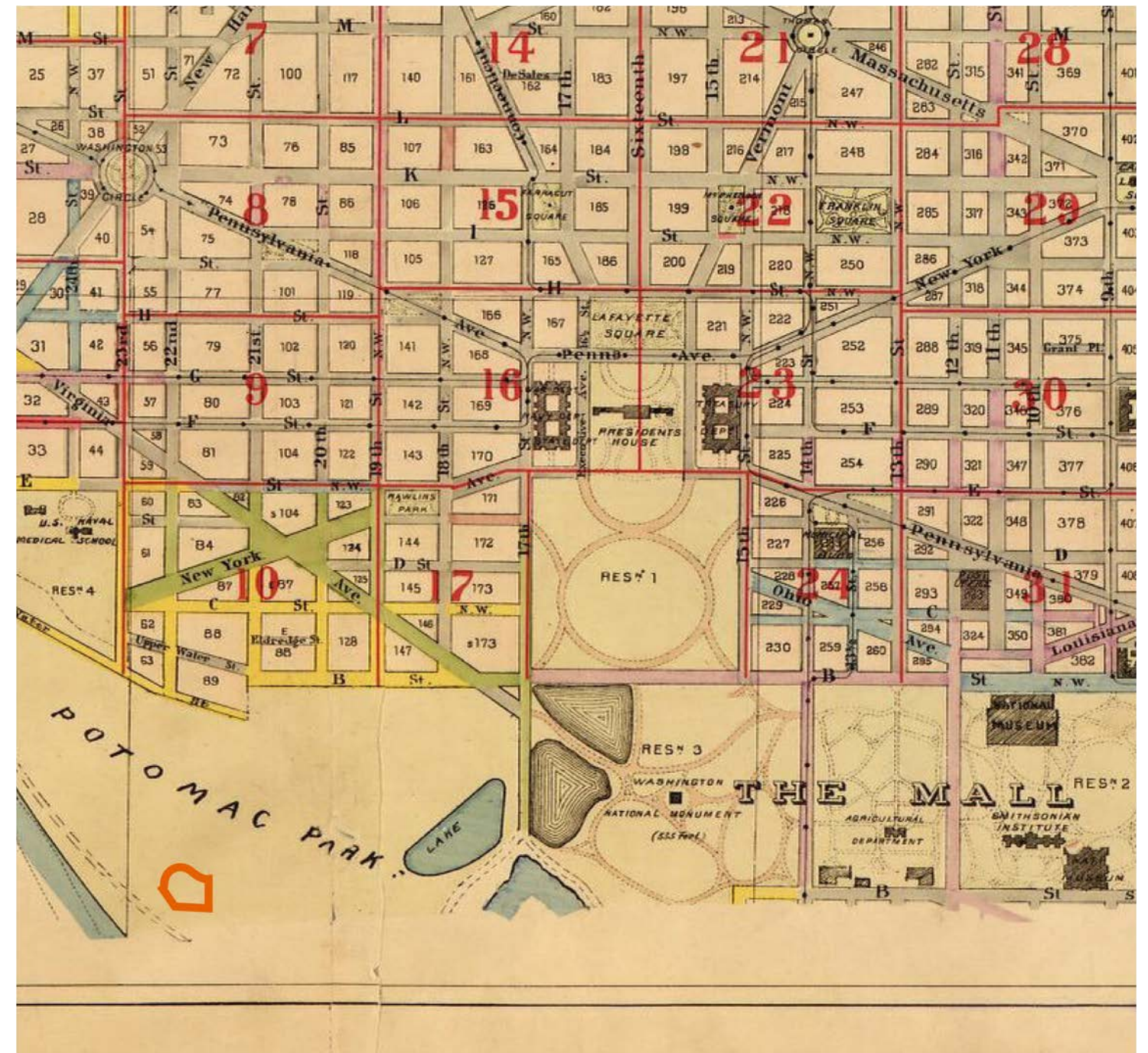
¹ Ellicott, A., Hill, S. & Taggart, H. T. (1792) *Plan of the city of Washington in the territory of Columbia: ceded by the states of Virginia and Maryland to the United States of America, and by them established as the seat of their government, after the year MDCCC.* [Boston: s.n.] [Map] Retrieved from the Library of Congress, <https://www.loc.gov/item/88694162/>.

Site History



1851¹

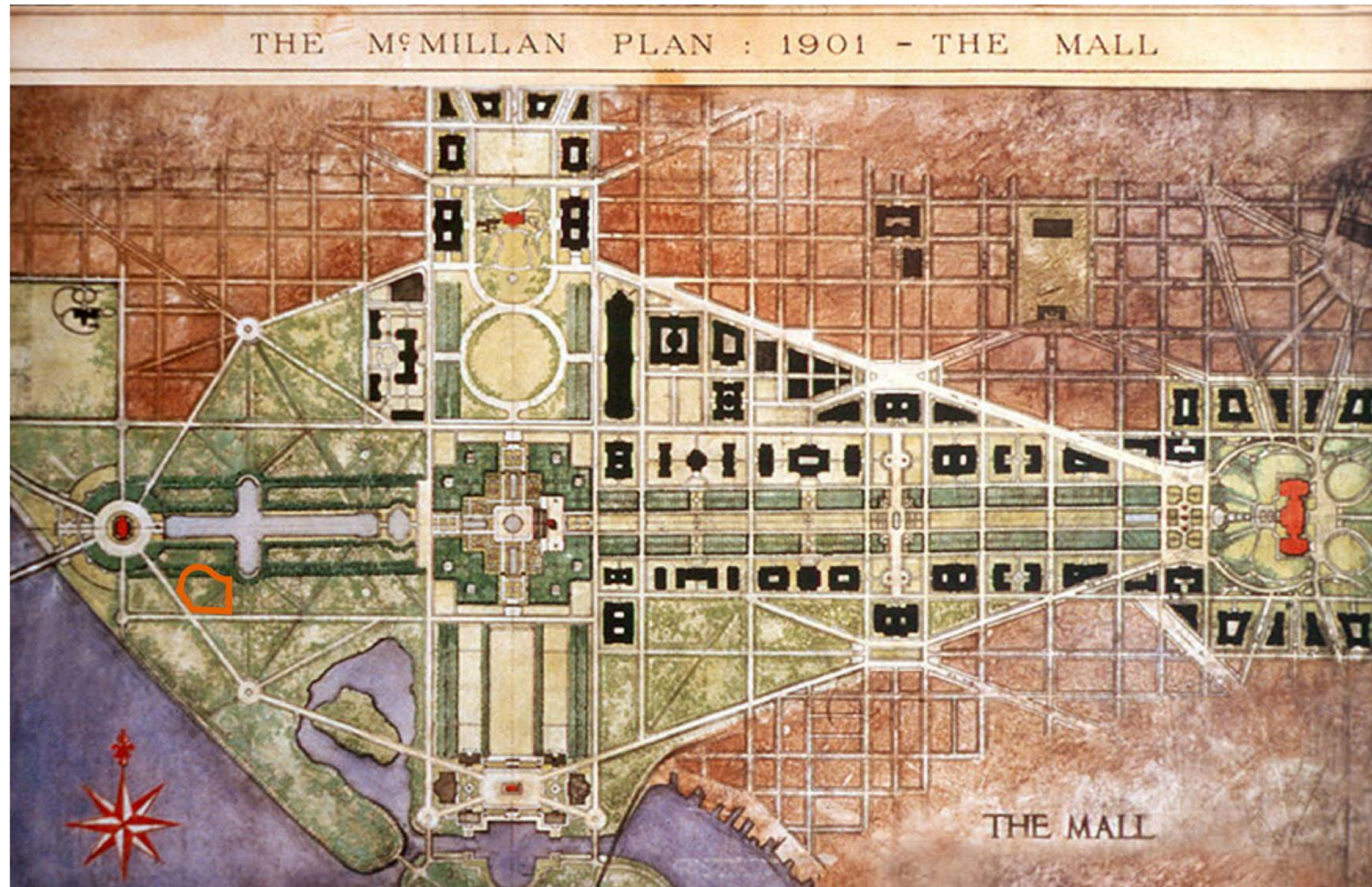
¹ Keily, J. & Van Derveer, L. (1851) *Map of the city of Washington D.C.: established as the permanent seat of the government of the U.S. of Am.* Camden, N.J.: Lloyd Van Derveer. [Map] Retrieved from the Library of Congress, <https://www.loc.gov/item/88694049/>.



1909²

² Baist, G. W., Baist, W. E. & Baist, H. V. (1909) *Baist's real estate atlas of surveys of Washington, District of Columbia: complete in four volumes.* Philadelphia: G.W. Baist, -<1911 >. [Map] Retrieved from the Library of Congress, <https://www.loc.gov/item/87675120/>.

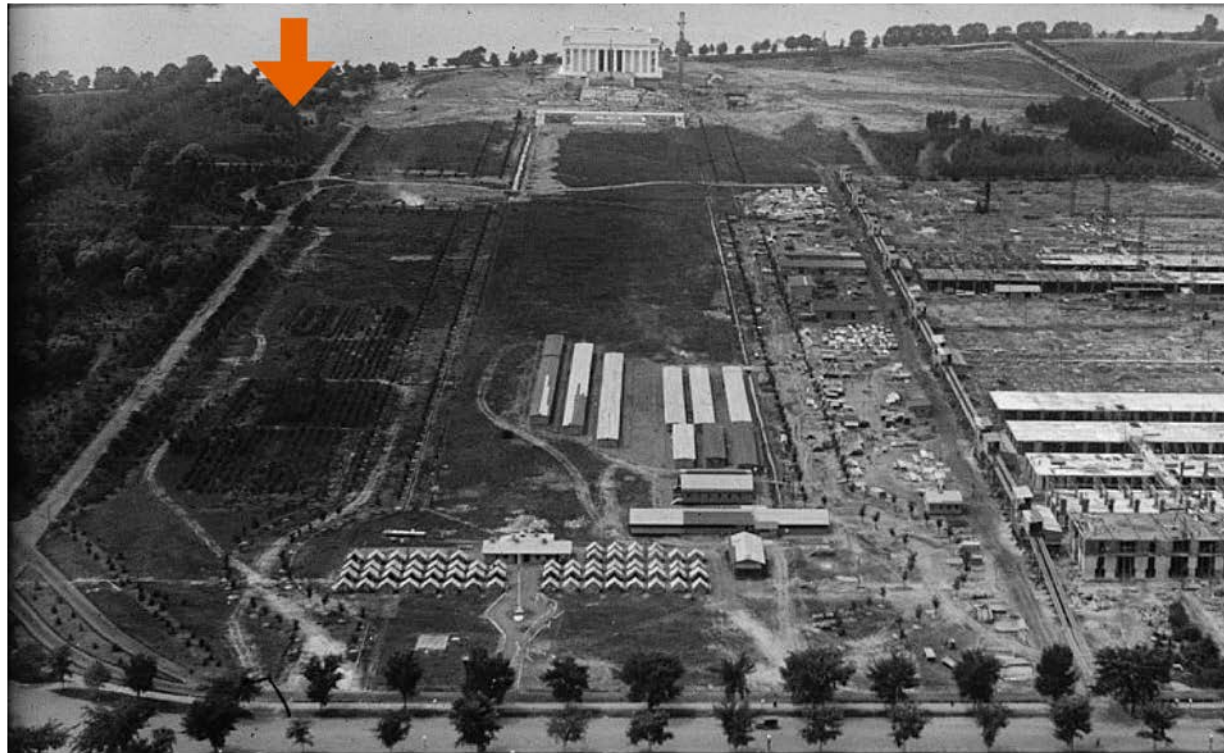
Site History



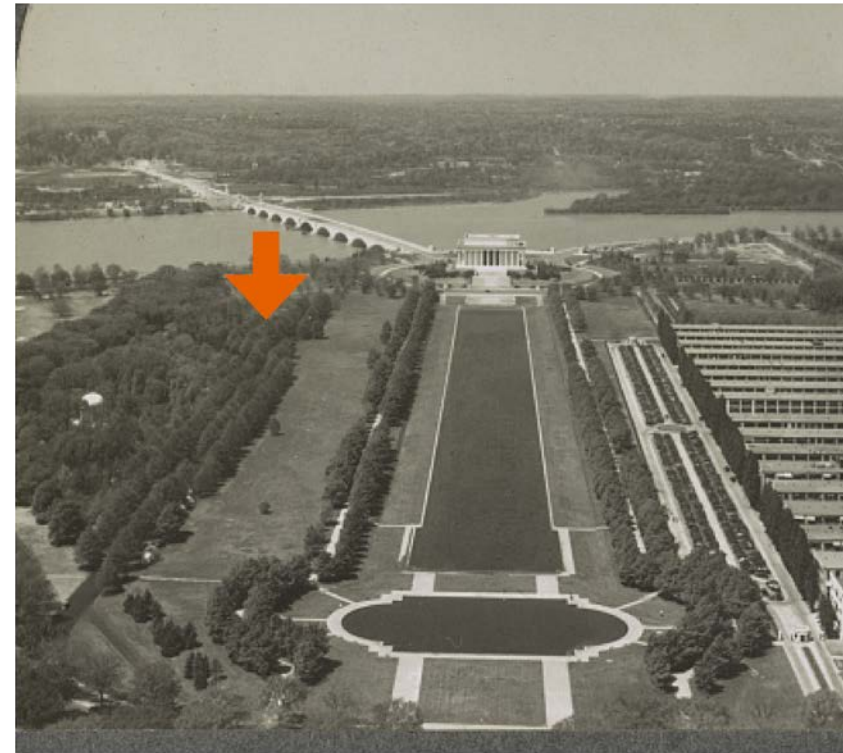
1901¹

¹ McMillan Senate Park Commission. (1902)

Site History



1916-1919¹



1935²



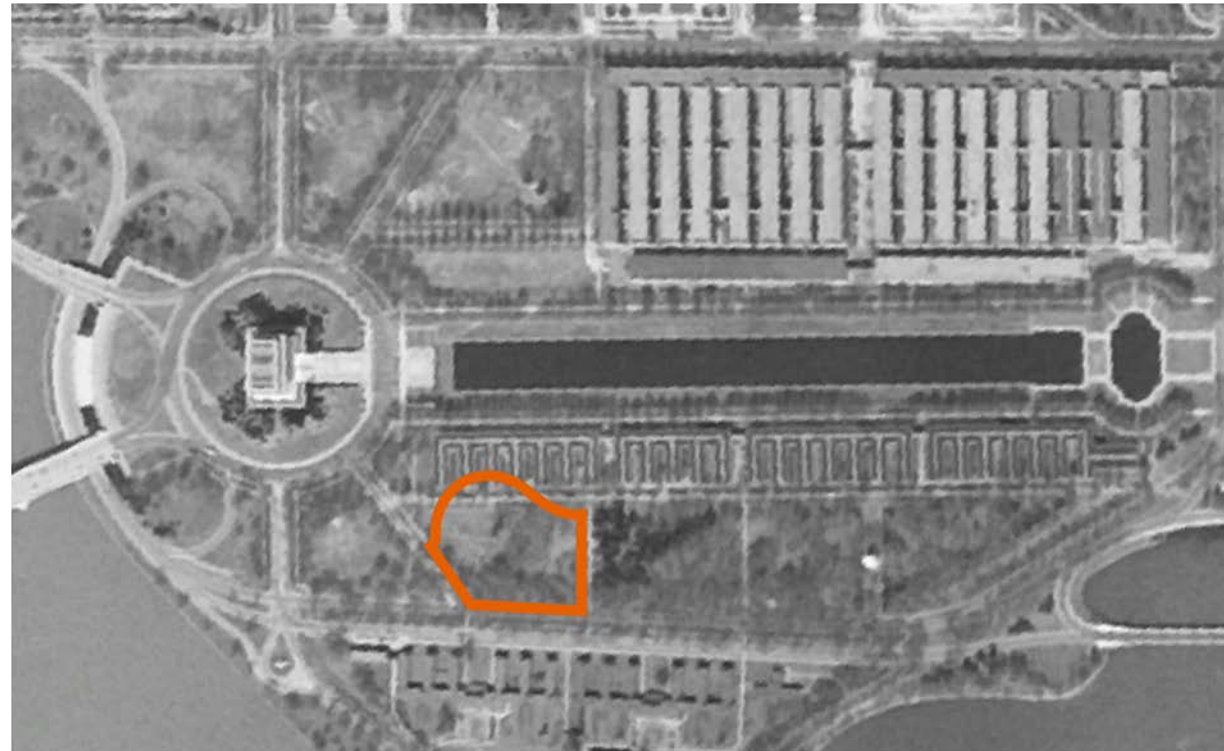
1963³

¹ Harris & Ewing, photographer. *Aerial view toward Lincoln Memorial, Washington, D.C.* District of Columbia United States Washington D.C. Washington D.C, None. [Between 1916 and 1919] [Photograph] Retrieved from the Library of Congress, <https://www.loc.gov/item/2016854282/>.

² Keystone View Company. (1935) *Lincoln Memorial from Washington Monument.* Washington D.C, 1935. Meadville, Pa. ; New York, N.Y. ; Chicago, Ill. ; London, England: Keystone View Company, Manufacturers and Publishers. [Photograph] Retrieved from the Library of Congress, <https://www.loc.gov/item/2017647236/>.

³ O'Halloran, T. J., photographer. (1963) *Aerial view of marchers, from the Lincoln Memorial to the Washington Monument, at the March on Washington.* Washington D.C, 1963. [Photograph] Retrieved from the Library of Congress, <https://www.loc.gov/item/2013649717/>.

Site History



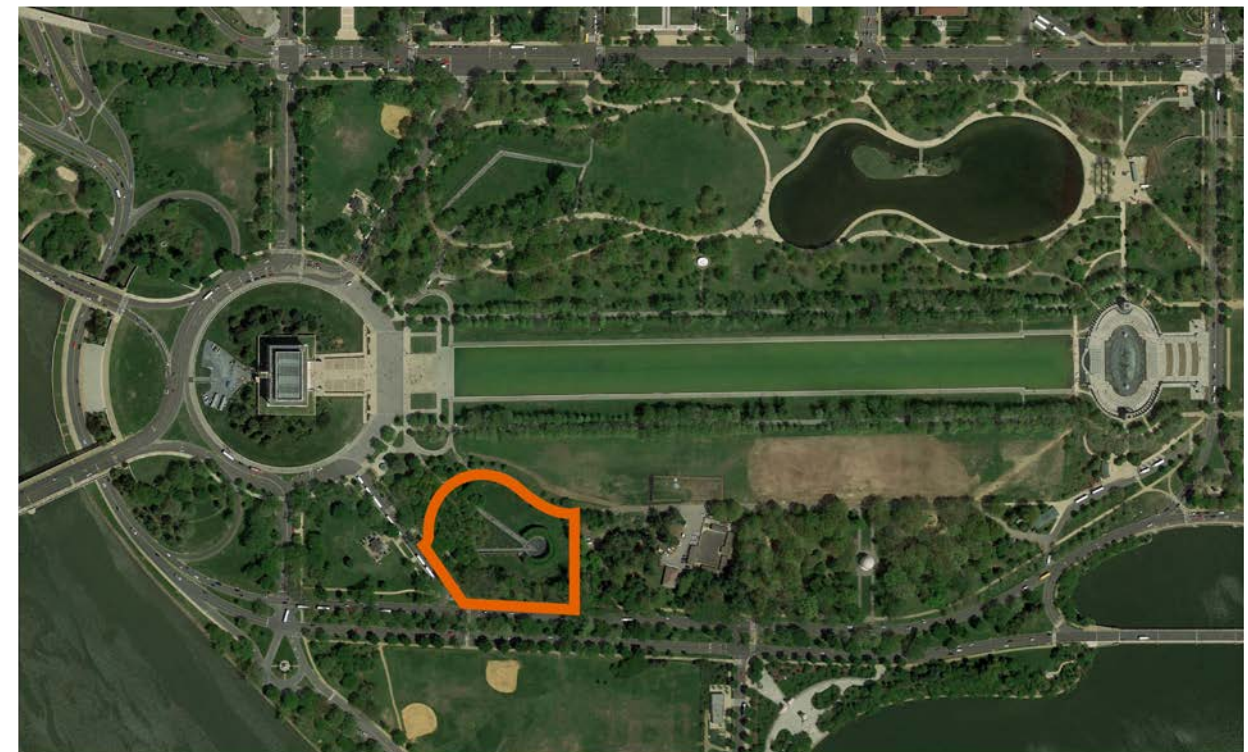
1944



1988

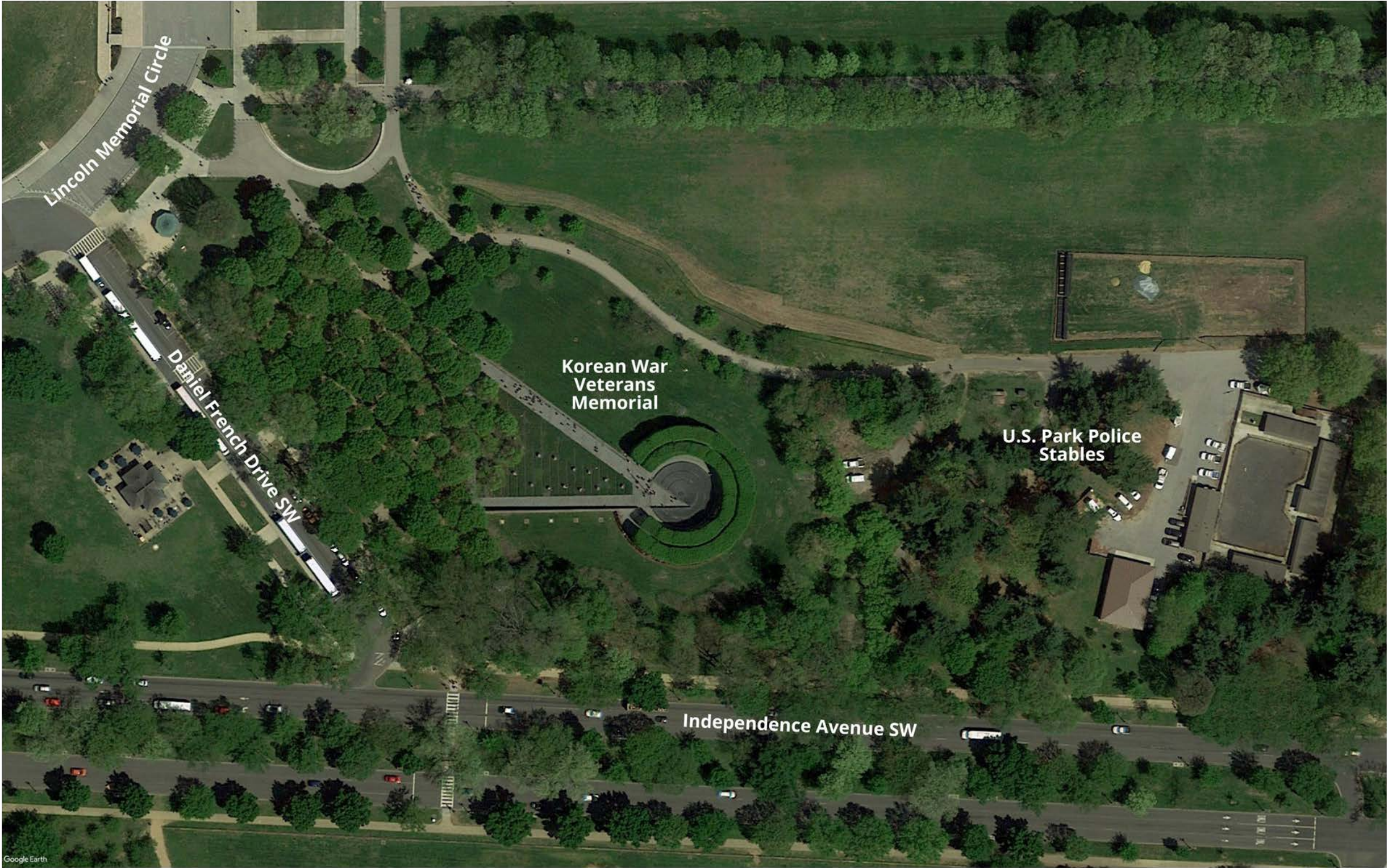


1999



2018

Site History



2018

Site Photos



View of Memorial entrance looking east



View from Memorial path looking toward the Washington Monument

Site Photos



View of Memorial looking southeast



View of south Memorial path looking east



Site Photos



View of Memorial from the north side



View of Memorial from the north side

Site Photos



View from Independence Avenue sidewalk



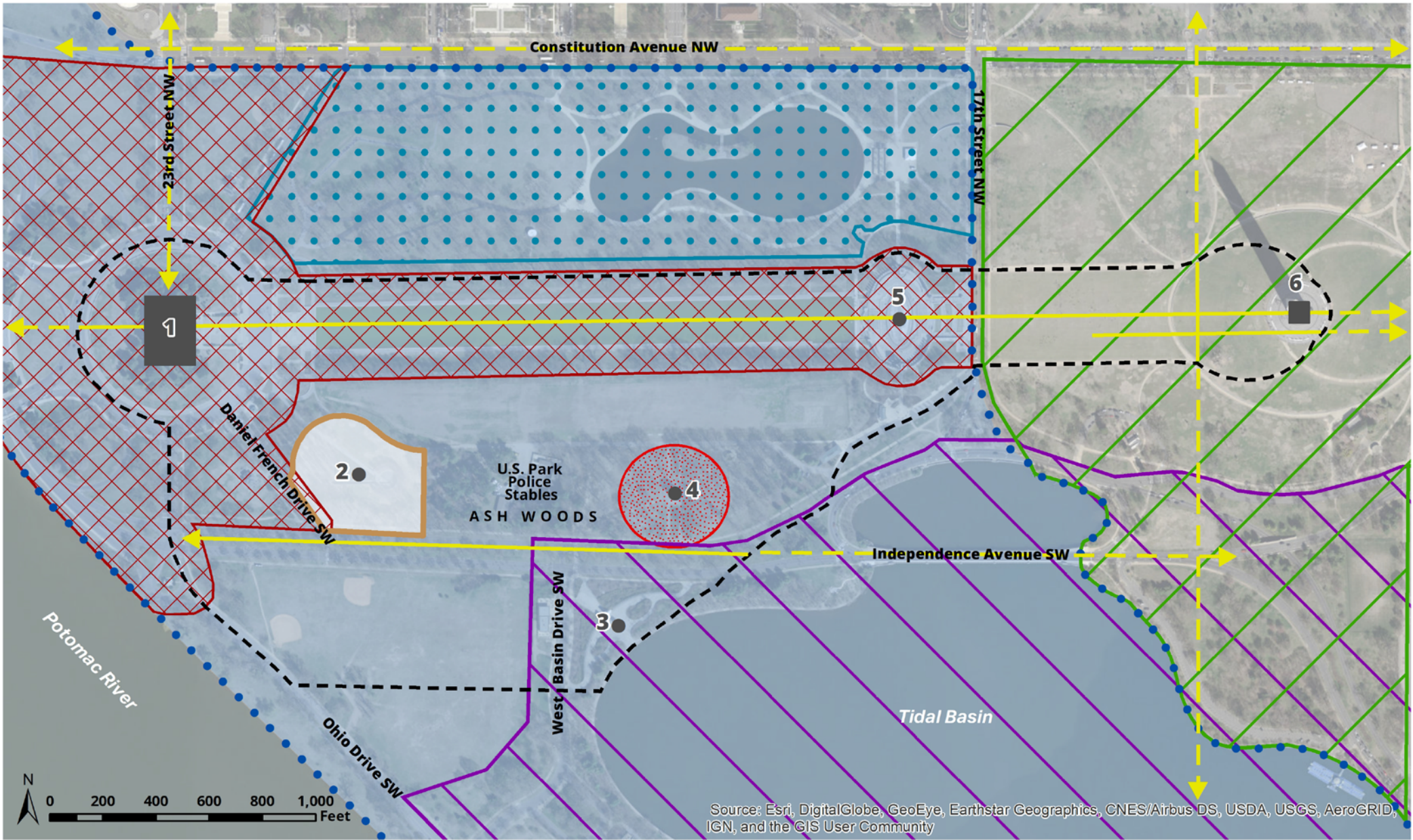
View from Independence Avenue sidewalk



View of south side of mural wall



Draft Area of Potential Effect



LEGEND

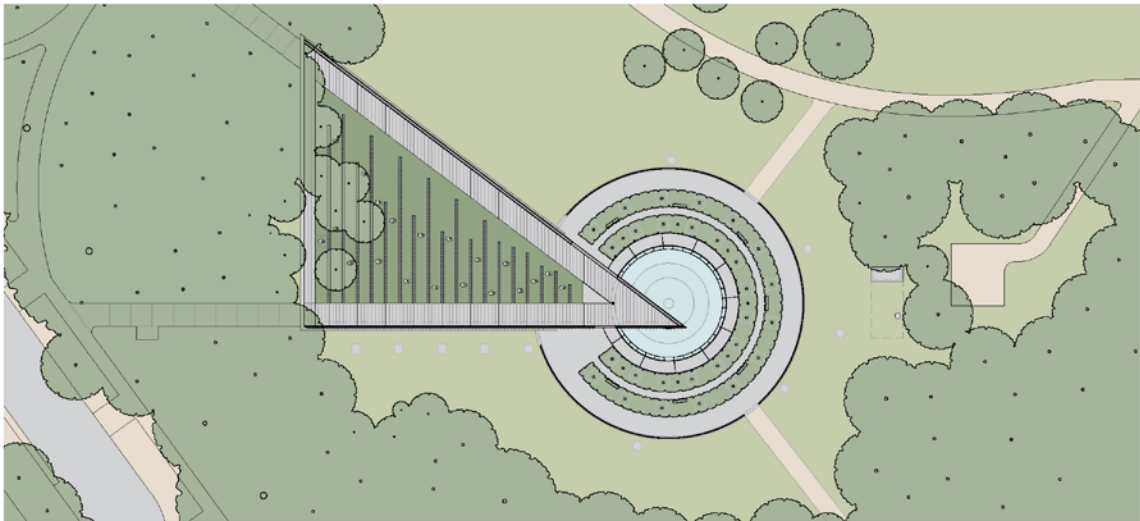
- Draft Area of Potential Effect (APE)
- Project Site
- East and West Potomac Parks Historic District
- Constitution Gardens Cultural Landscape
- Lincoln Memorial Grounds Cultural Landscape

- Tidal Basin Cultural Landscape
- Washington Monument Grounds Cultural Landscape
- District of Columbia War Memorial Cultural Landscape
- McMillan Plan/L'Enfant Plan of the City of Washington Vista in the APE
- McMillan Plan/L'Enfant Plan of the City of Washington Vista outside the APE
- Historic Resources in the APE

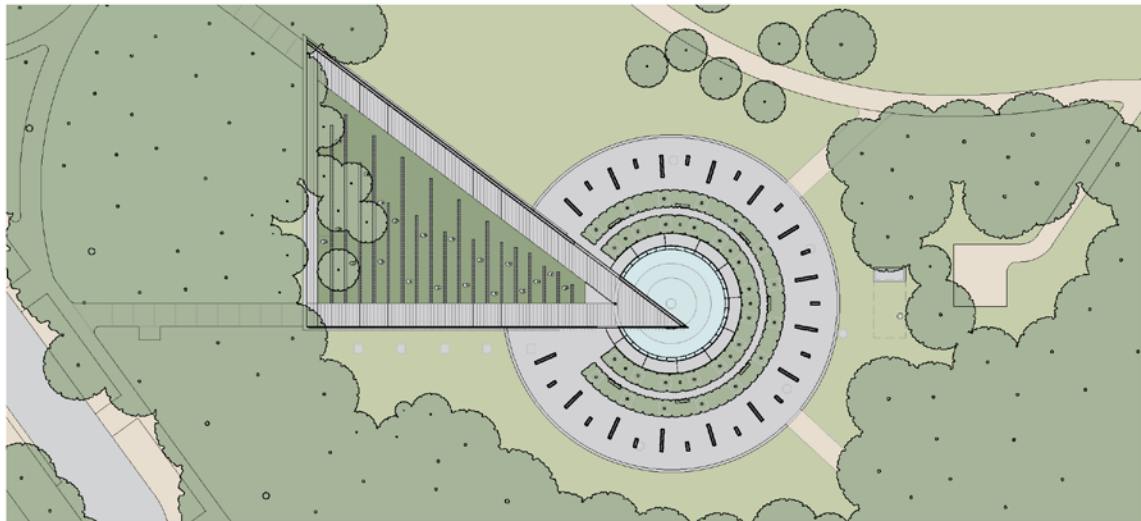
- 1 Lincoln Memorial (and Statue of Lincoln)
- 2 Korean War Veterans Memorial
- 3 Martin Luther King, Jr. Memorial
- 4 District of Columbia War Memorial
- 5 World War II Memorial
- 6 Washington Monument

Note: The APE also includes the National Mall Historic District. In the above map, the National Mall Historic District encompasses the area roughly bounded by the Potomac River to the south and west, and Constitution Avenue NW to the north; east of 17th Street NW, the National Mall Historic District extends further north and east beyond the map.

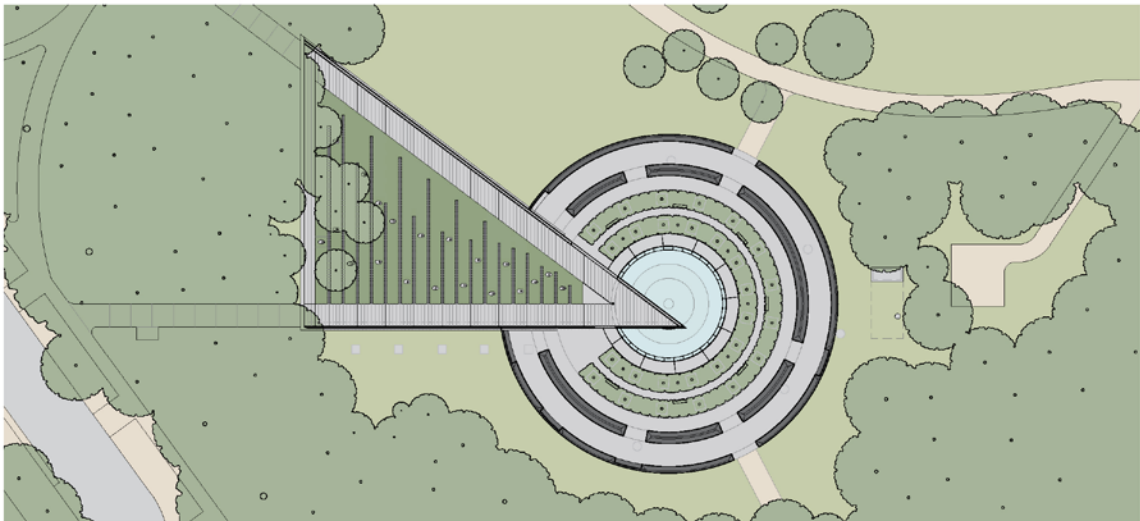
Initial Design Options



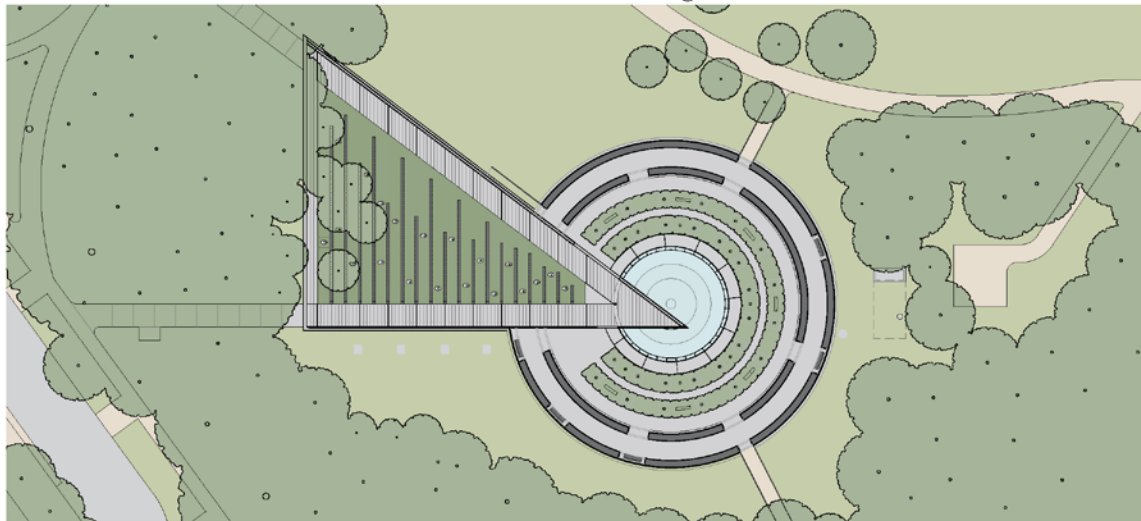
OPTION A.1 - Glass Wall



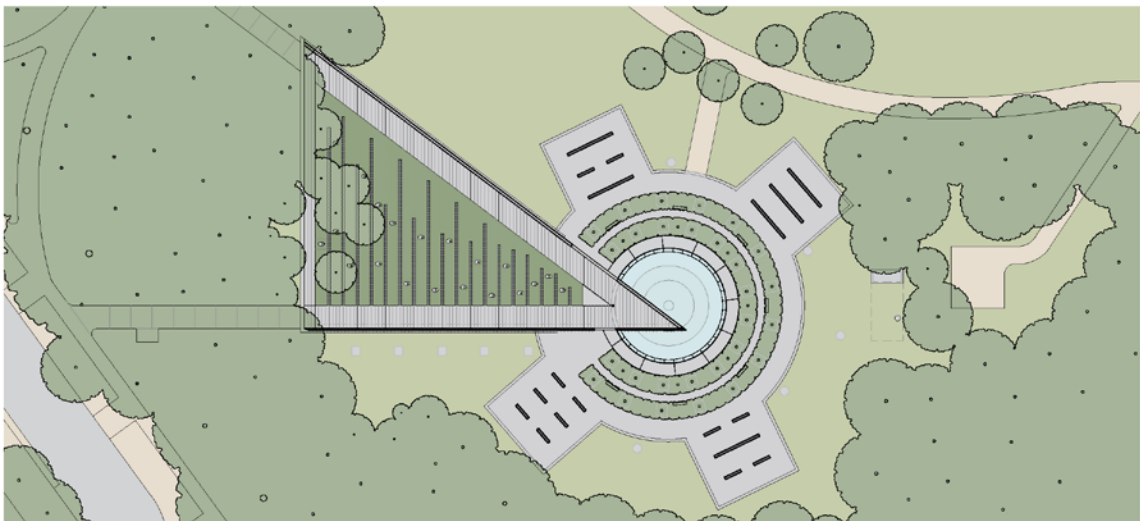
OPTION B.1 - Radiating Walls



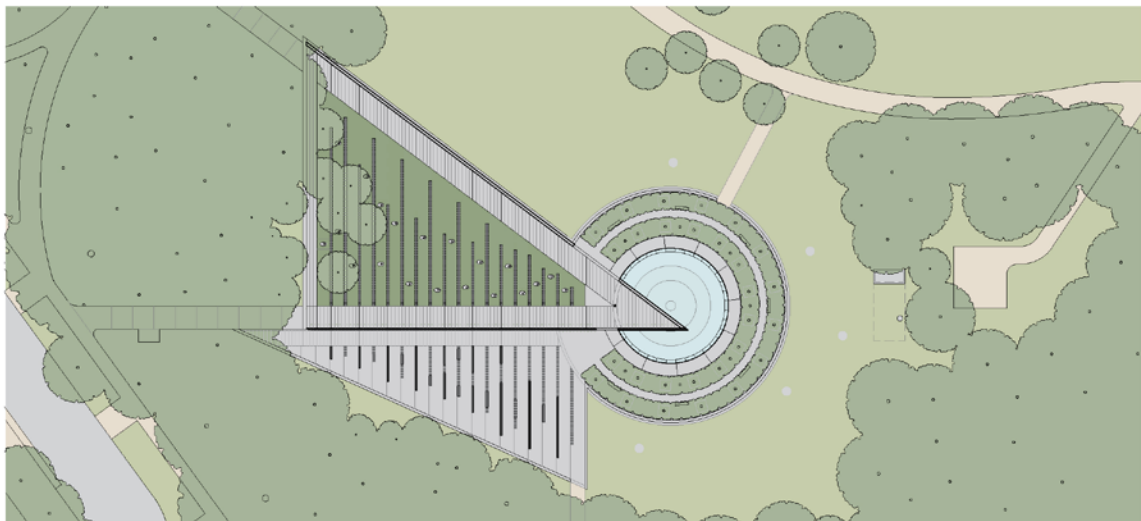
OPTION C.1 - Low Walls (Three Sided)



OPTION C.2 & C.3 - Low Walls (Two Sided)

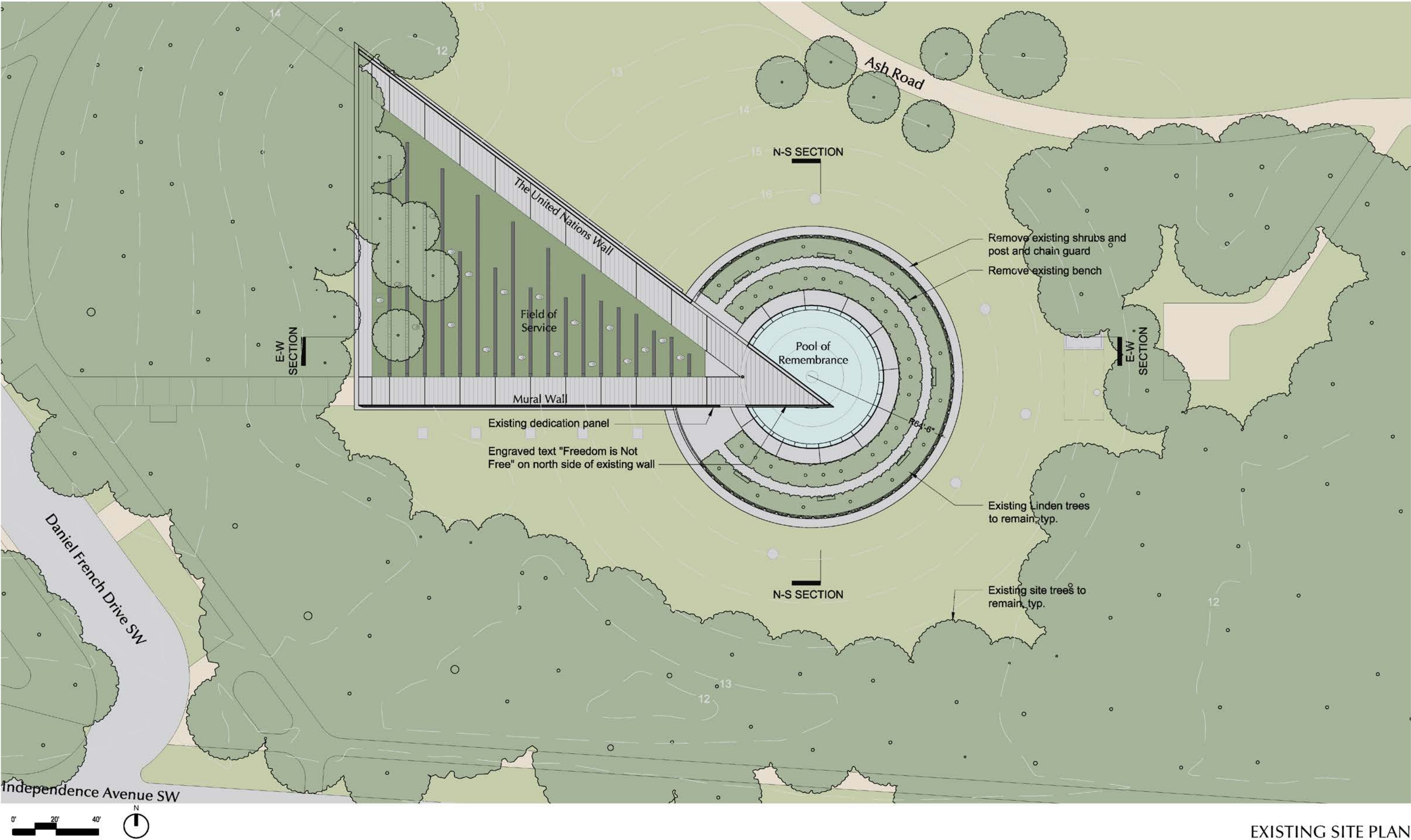


OPTION D.1 - Korean Flag Trigram Pattern

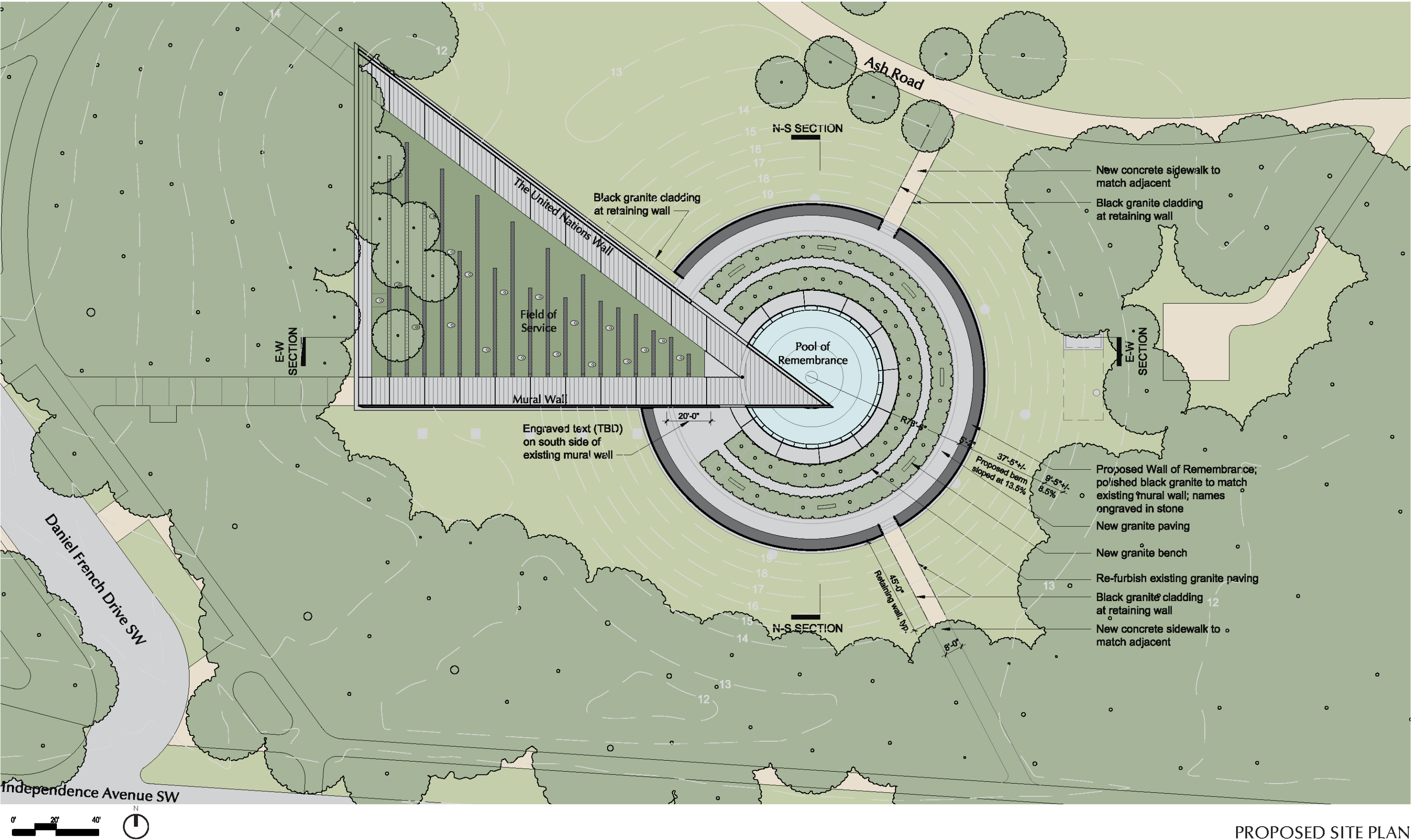


OPTION E.1 - South Side Area of Remembrance (Walls Oriented North-South)

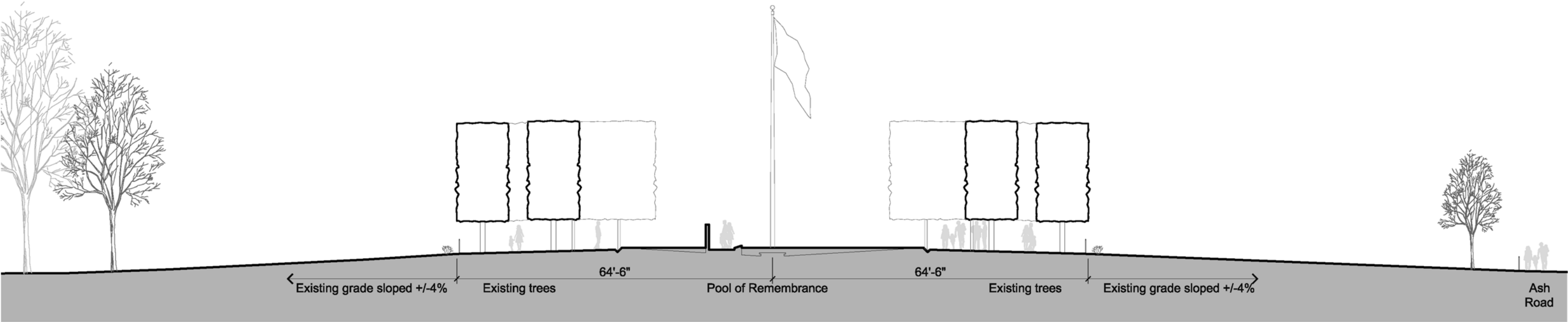




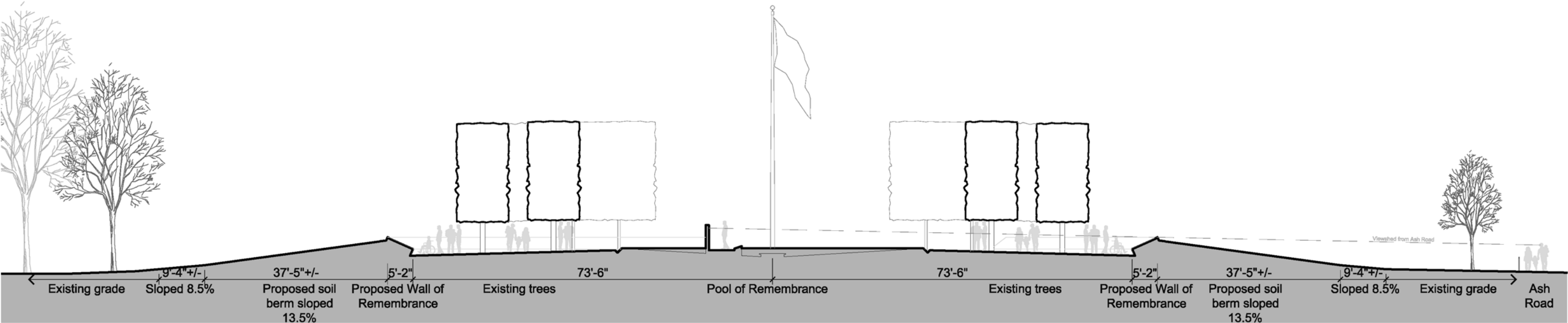
EXISTING SITE PLAN



PROPOSED SITE PLAN



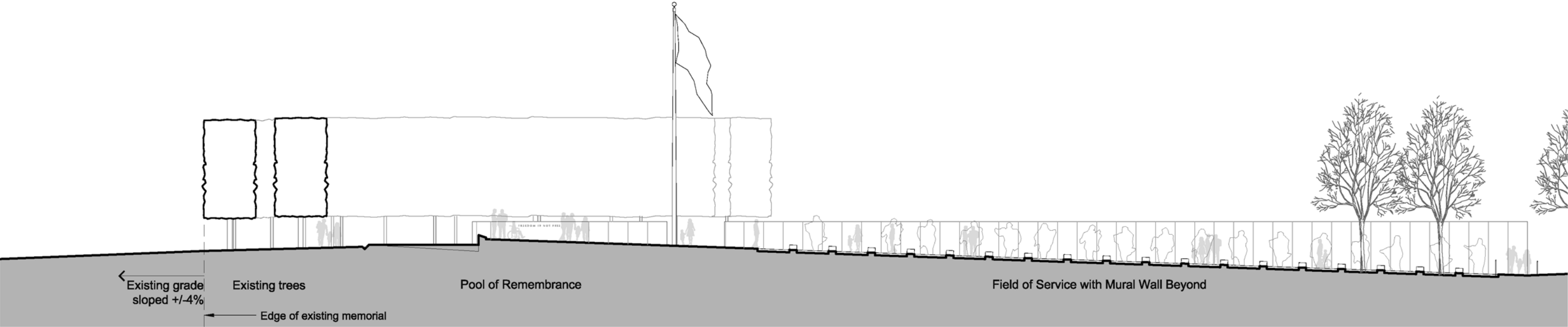
EXISTING



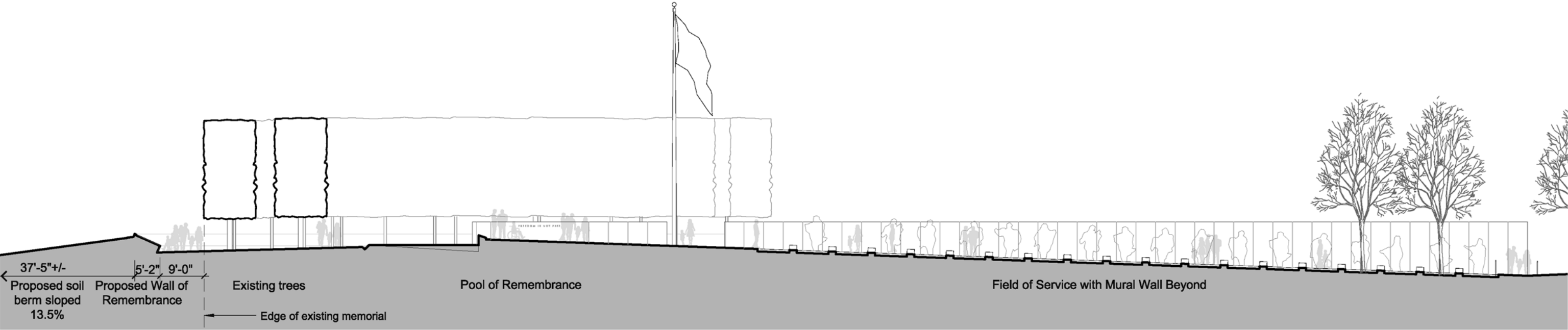
PROPOSED



NORTH-SOUTH SITE SECTIONS THROUGH POOL OF REMEMBRANCE



EXISTING

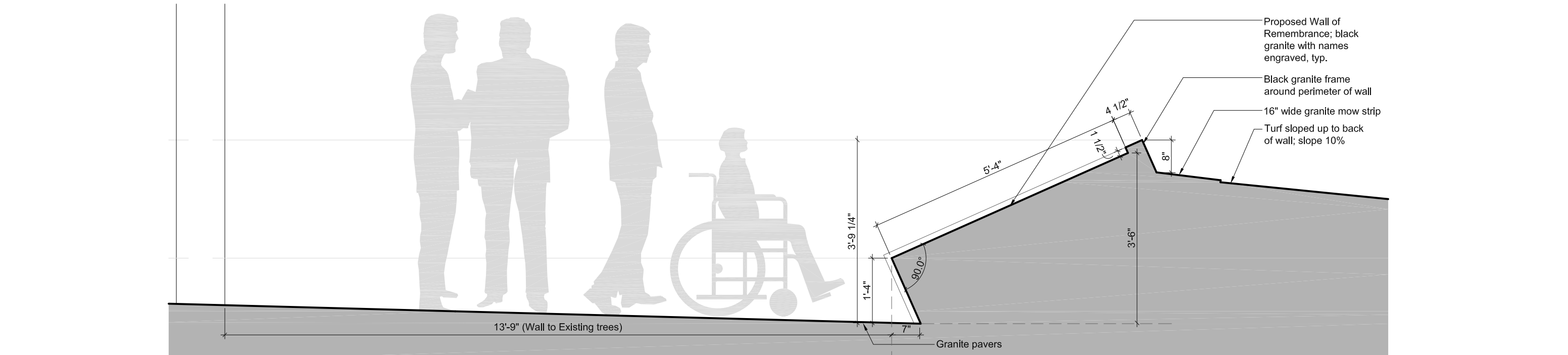


PROPOSED



Korean War Veterans Memorial Wall of Remembrance

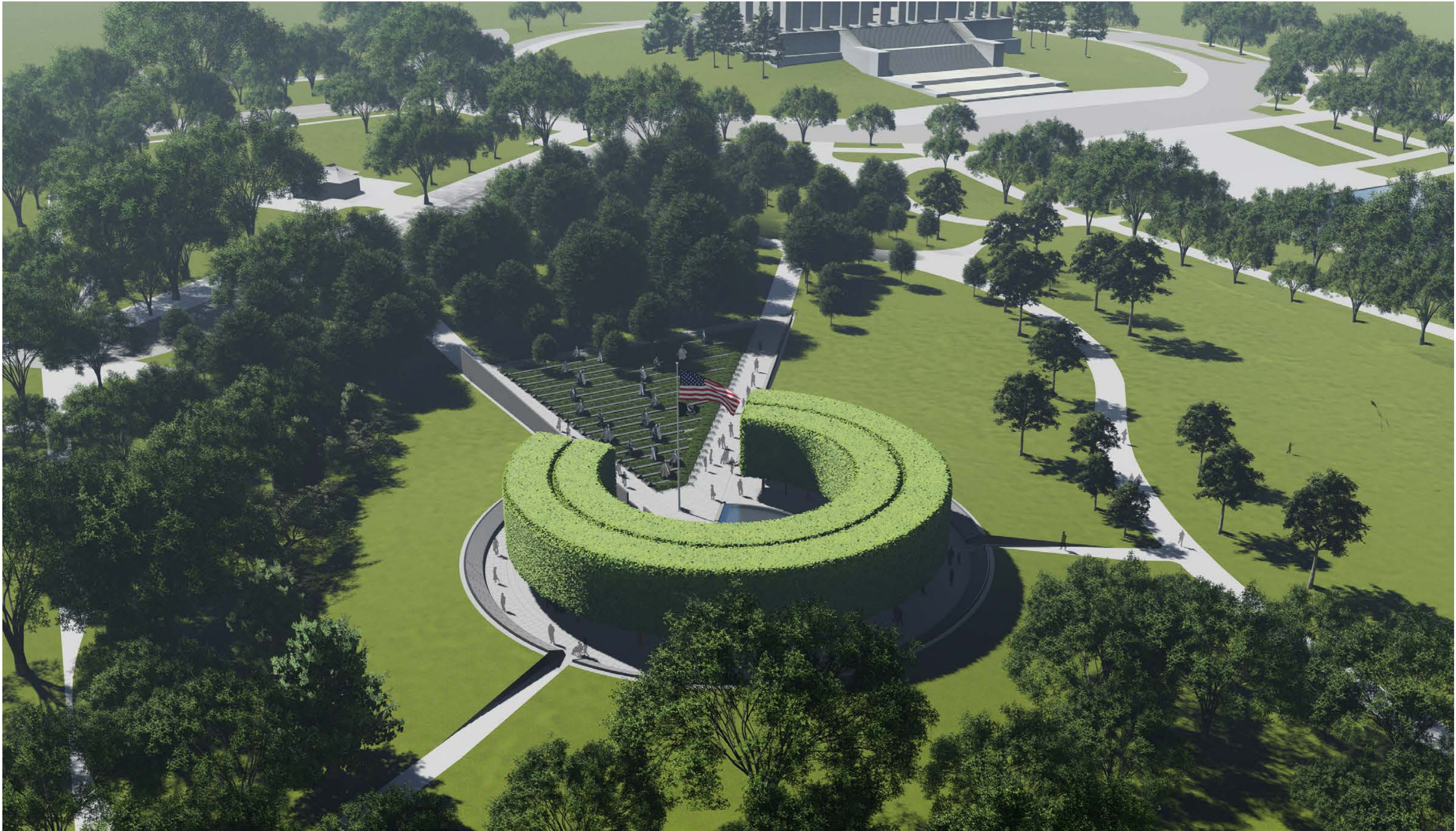
Section 106 Consulting Parties Meeting October 15, 2019



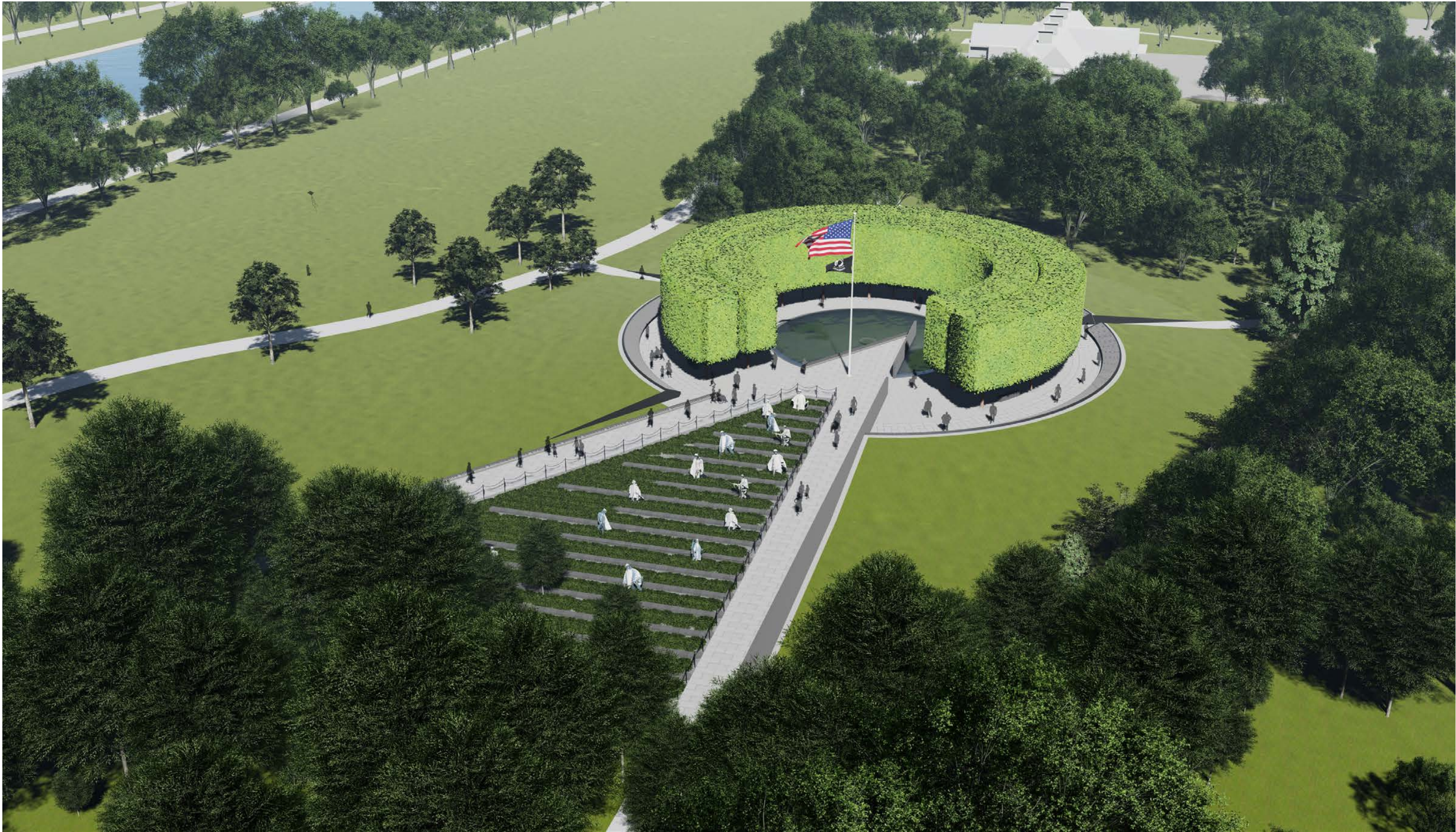
PROPOSED SECTION THROUGH WALL OF REMEMBRANCE



VIEW OF ENGRAVED NAMES



BIRD'S EYE VIEW LOOKING WEST



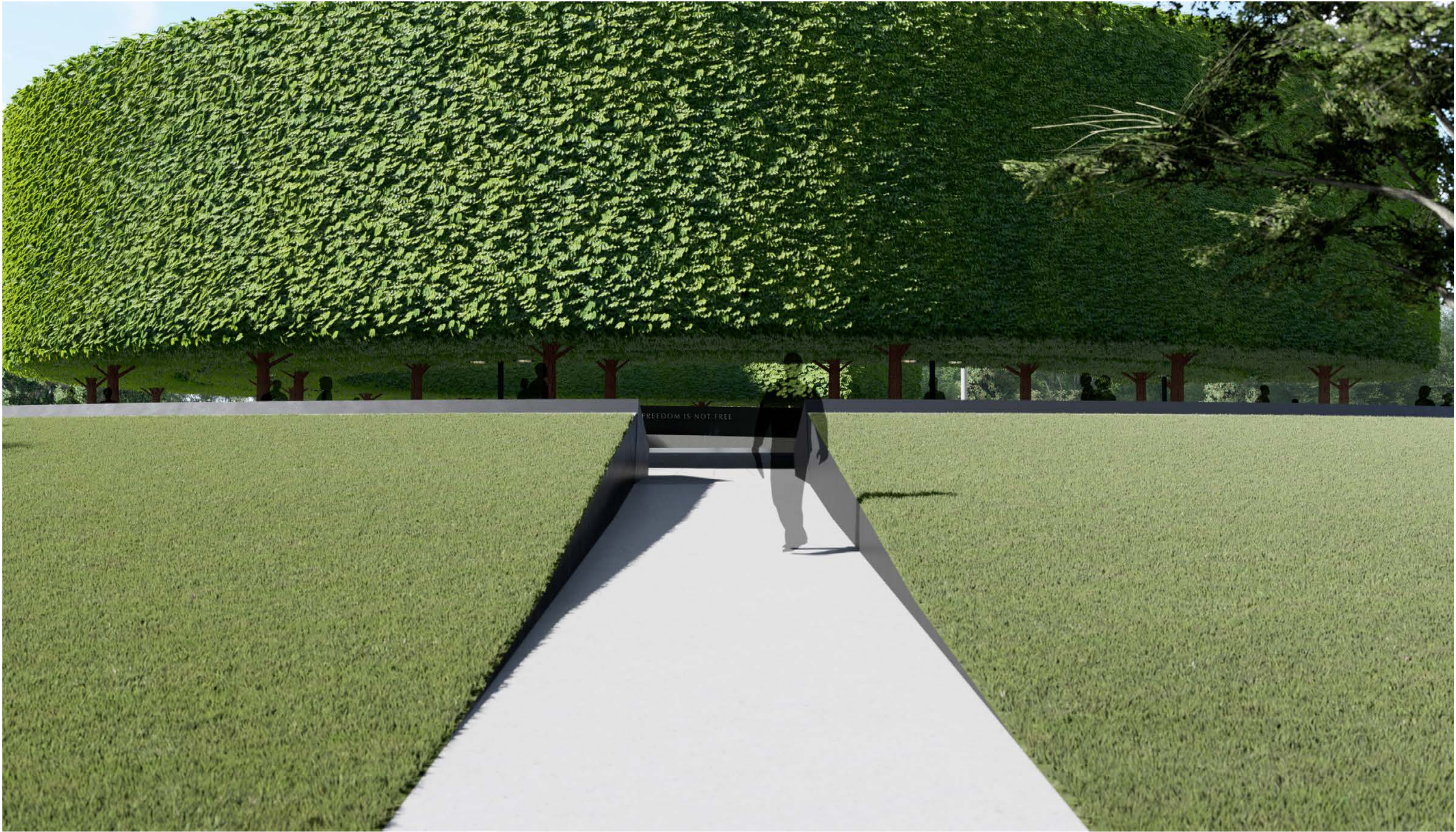
BIRD’S EYE VIEW LOOKING EAST



VIEW FROM NORTHWEST MEMORIAL ENTRY



VIEW FROM POOL OF REMEMBRANCE LOOKING NORTH



VIEW FROM ASH ROAD

Discussion

- Potential effects
- Identified minimization measures
- Potential mitigation measures

Project Status + Next Steps

- CFA Review (September 19, 2019)
- NCPC Review (October 3, 2019)
- Receive comments by October 29, 2019 at <https://parkplanning.nps.gov/kwvmwr>
- Continue design and evaluation of potential adverse effects on historic properties
- Section 106 consultation continues