



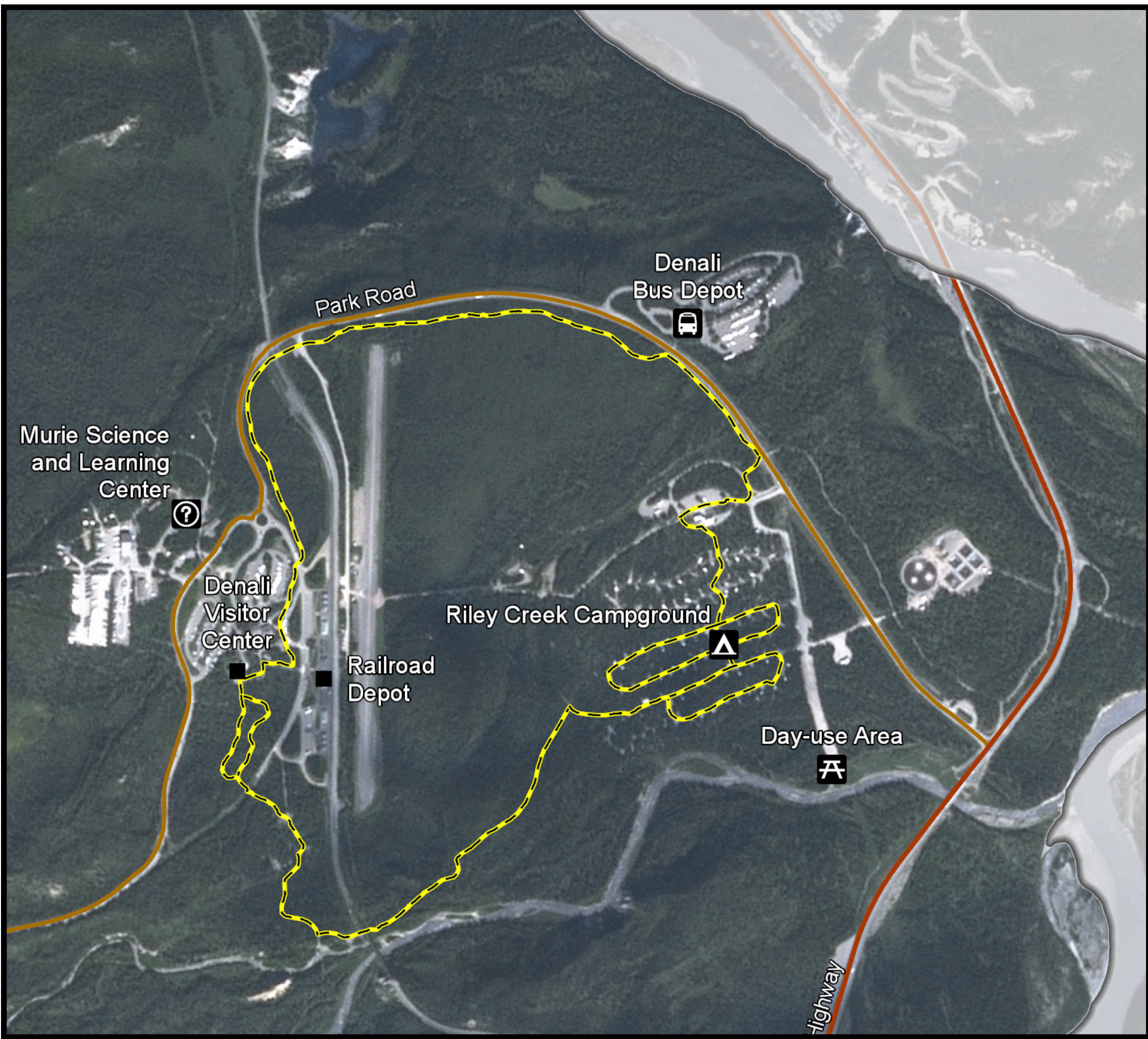
Trail Highlights

Many people use trails and winter routes to explore Denali when snow blankets the landscape. The Winter and Shoulder Season Plan discusses a number of ideas that may affect the type of trail experiences available to winter visitors.

Grooming

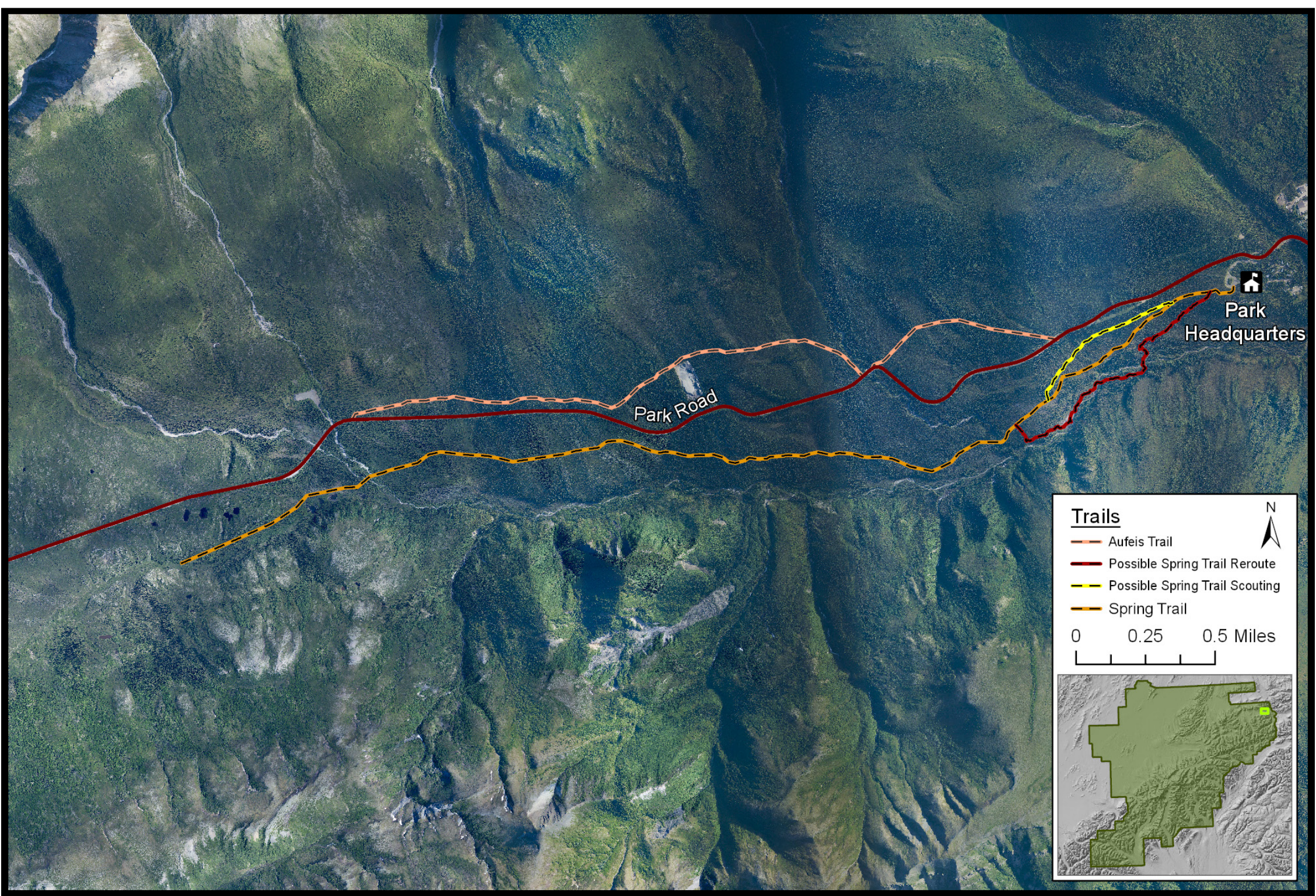
Ideas discussed in the plan include:

- Not grooming any trails
- Continuing to groom several miles of trail in the entrance area
- Grooming portions of trails in the Nenana River area, if trails are built
- Continuing opportunistic grooming of the Denali Park Road to mile seven as a result of road maintenance activities



Headquarters Area

If the Denali Park Road is unplowed past Headquarters during the winter, the Aufeis trail could be a recreational opportunity. If the Park Road is plowed past Headquarters in the winter, a re-route of the Spring trail could provide improved access for mushers.



Mountain Vista

The established trails at Mountain Vista could continue to be distinguished by colored wands. Mushing access from the Park Road could be improved by establishing a route cleared through roadside vegetation.

