



Welcome

Public Meeting #2

Claude Moore farm area at Turkey Run Park Concept Plan

6-6:30pm

Open House/Discussion at Boards

6:30-7:30pm

Presentation/Q&A

7:30-8pm

Open House/Discussion at Boards



Agenda

Welcome + Introductions

Background Information

Review of Concepts

Comment Submissions

Q&A



Plan Goals

The goals of this Concept Plan are to:

- Conduct community outreach and provide opportunities for the public to re-imagine the park
- Explore and identify potential adaptive reuse of existing facilities
- Develop a range of concepts for the park as part of the George Washington Memorial Parkway expanding opportunities for the public to explore the resources and engage in new visitor experiences



Existing conditions

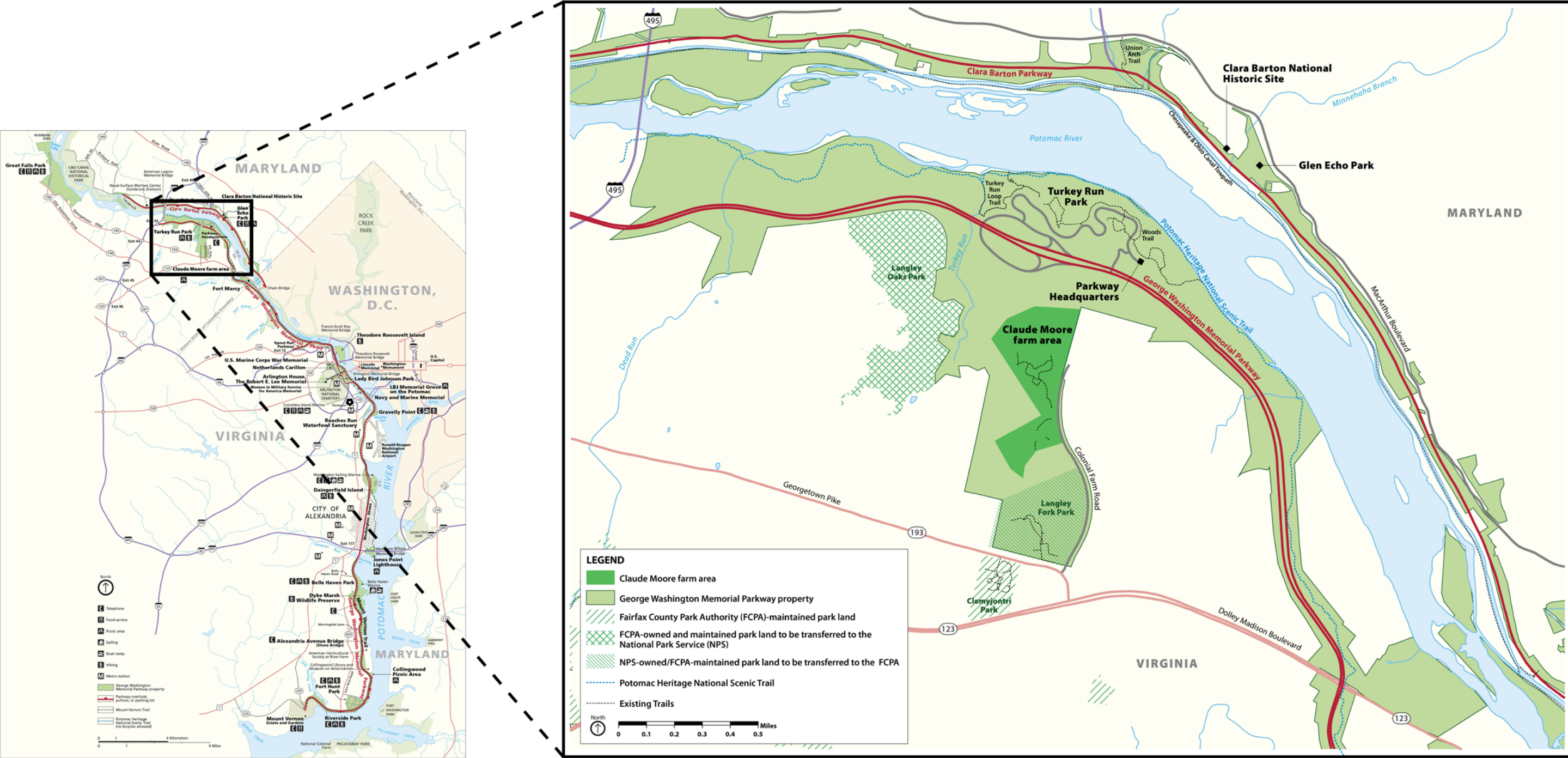


Existing conditions

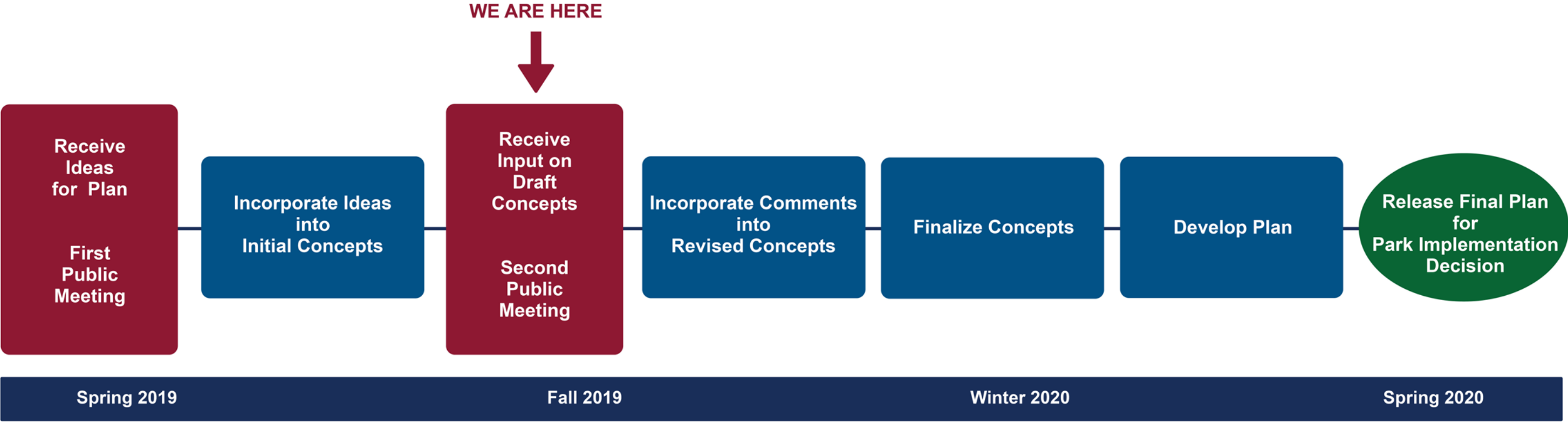


Claude Moore farm area at Turkey Run Park Concept Plan

Project Location



Project Timeline





Public Comment Period Summary

- Public comment period #1: April 25 - May 25, 2019
- 52 attendees signed in at the public meeting
- 90 pieces of correspondence were received during the public comment period
- Comments were received from:
 - Former park visitors, volunteers, and staff
 - Official representatives from several groups



Comments Received

Commenters described:

- Activities they enjoyed or participated in during previous park visits
- How often and what time of year they visited
- How long they spent at the park
- What they would like to do at the park in the future
- Activities and features they do not want at the park in the future

[illegible]



Comments Received

What would you like to see at the park in the future?

- Visit a colonial, living history, or working farm
- Attend farm-related activities, programs, or events
- Walk/hike/jog on trails
- Learn a skill
- View nature or wildlife
- Go on an interpretive nature walk with a Park ranger
- Have a picnic

George Washington Memorial Parkway

National Park Service
U.S. Department of the Interior

Claude Moore farm area at Turkey Run Park Concept Plan

Play & Activities: What would you like to do at the park?
Please place a sticky note with ideas of activities that interest you.

Your idea here

George Washington Memorial Parkway

National Park Service
U.S. Department of the Interior

Claude Moore farm area at Turkey Run Park Concept Plan

Activities: What would you like to do at the park?
Please place a sticker on the activities that interest you.

Your idea here

Attend a pop-up event

Visit a farm

Take an art class

Learn a skill

Tend to a community garden

Attend a junior ranger program

Go on an interpretive nature walk with a Park ranger

Experience a colonial-style farm

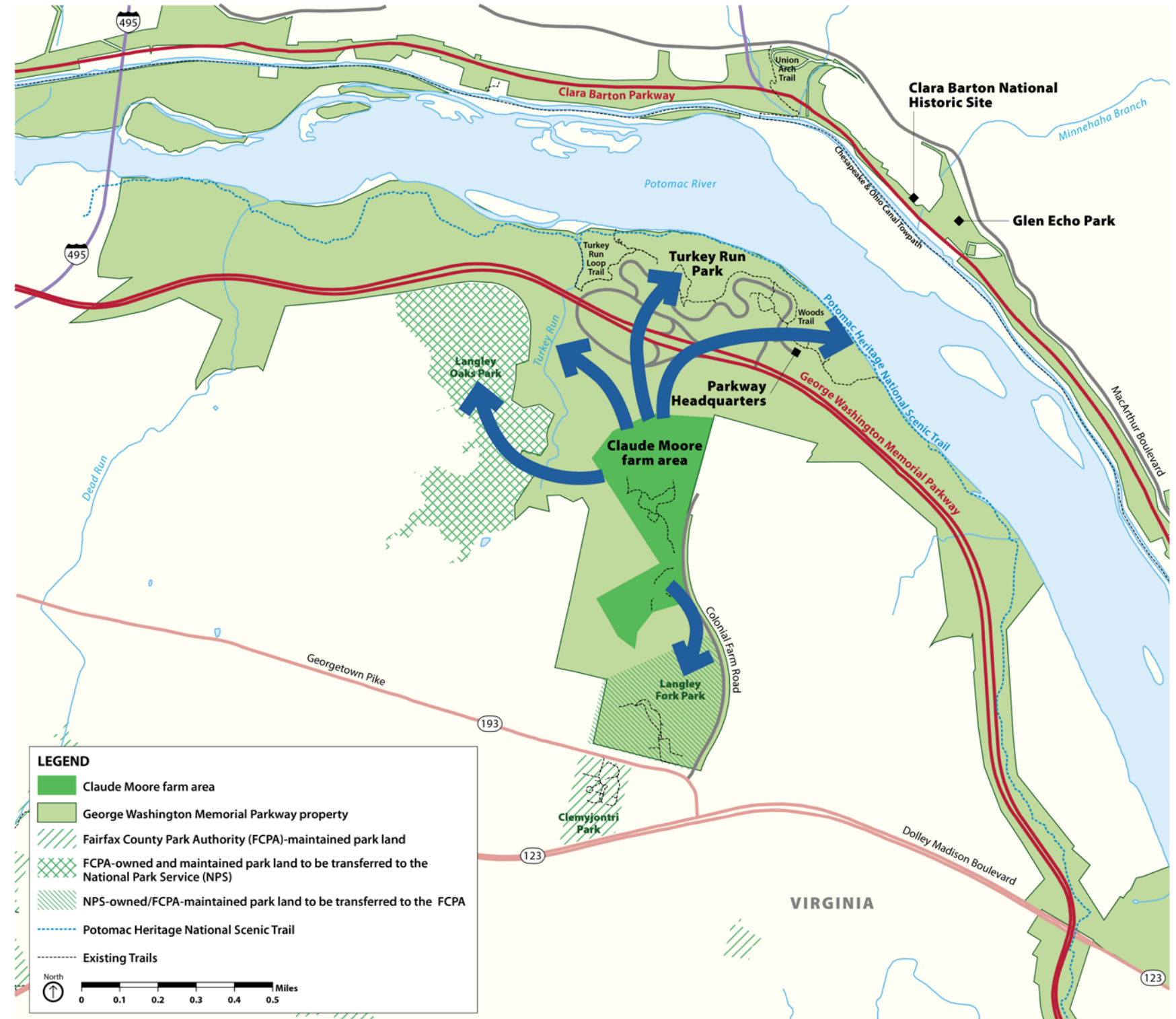
Public Meeting #1 – April 25, 2019



Comments Received

Commenters stated that they would like to see trail connections to:

- Existing trails
- Pavilion and baseball fields
- Langley Fork Park
- Langley Oaks Park
- Turkey Run Park
- Turkey Run
- Dead Run
- Potomac Heritage National Scenic Trail



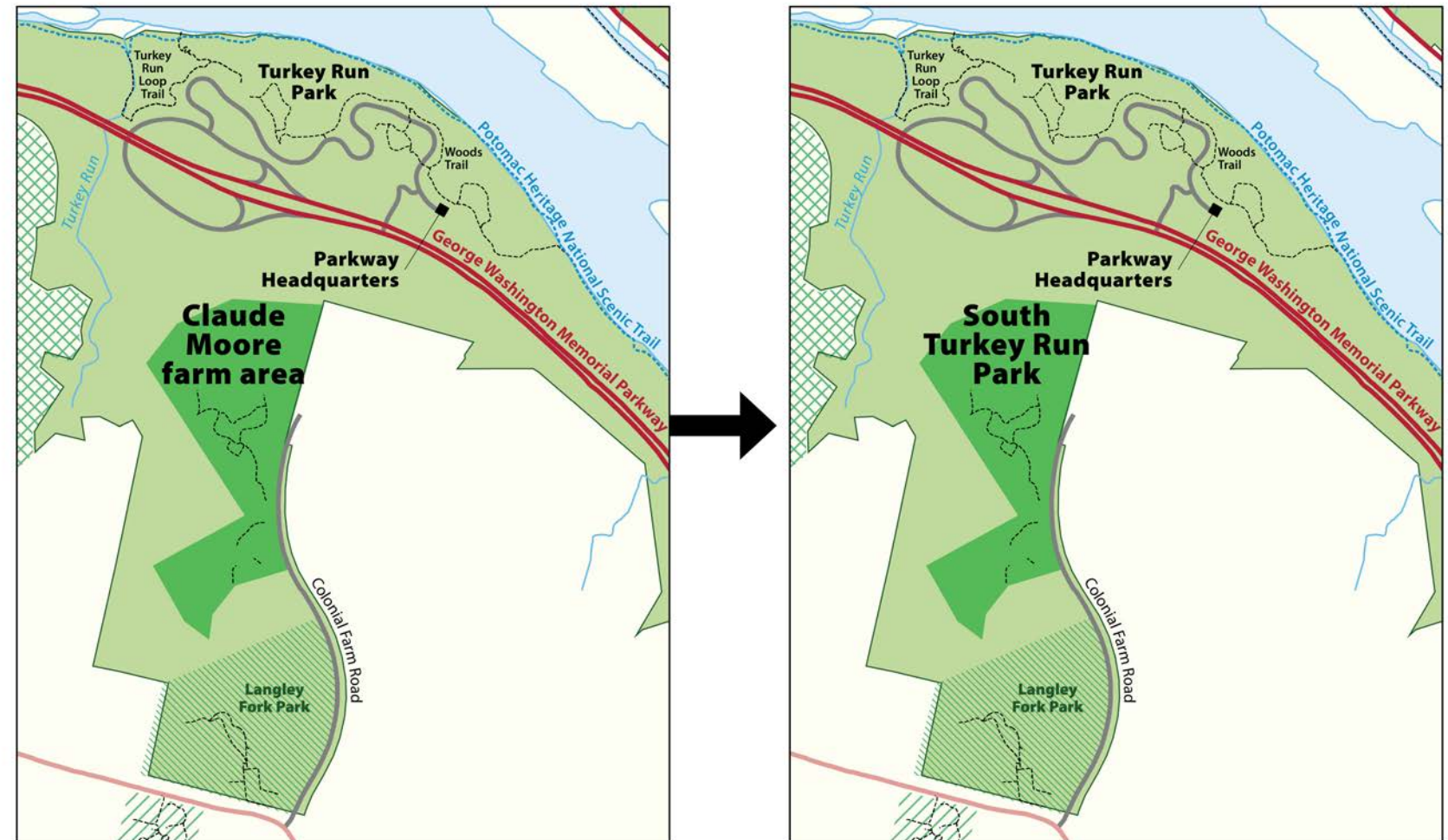


South Turkey Run Park Concept Plan

New Park Name

The new park name, South Turkey Run Park, will better reflect:

- Connection to Turkey Run Park and the larger George Washington Memorial Parkway
- Re-imagined park facilities to accommodate multiple activities
- Expanded recreation and education opportunities



South Turkey Run Park Concept Plan

Concepts Overview

- Three concepts:
 - Adventure + Exploration
 - Cultivation + Connection
 - Rejuvenation + Renewal
- Concepts include potential trail connections to:
 - Langley Fork Park and Clemyjontri Park
 - Potomac Heritage National Scenic Trail
 - Langley Oaks Park

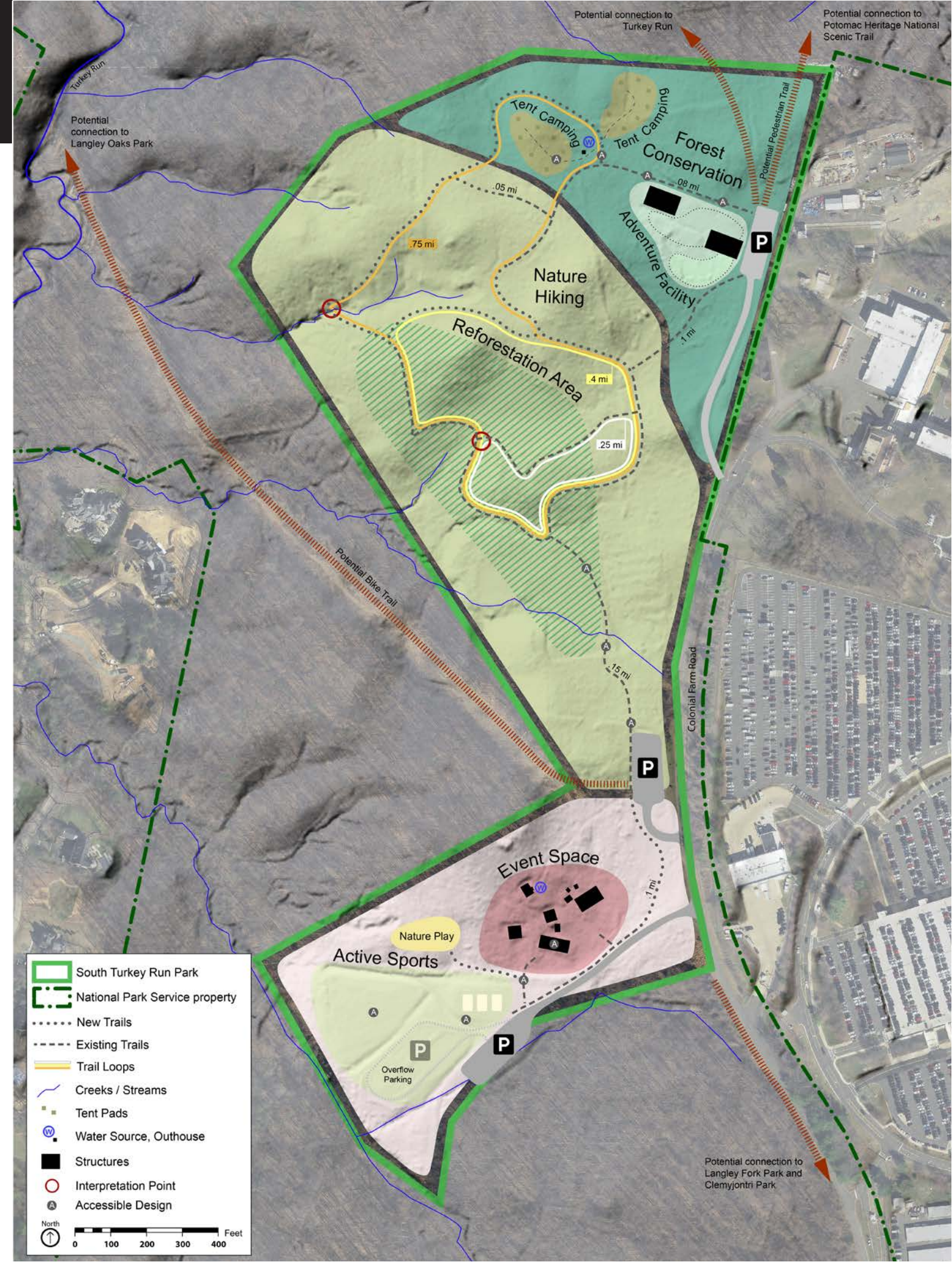


South Turkey Run Park Concept Plan

Adventure + Exploration

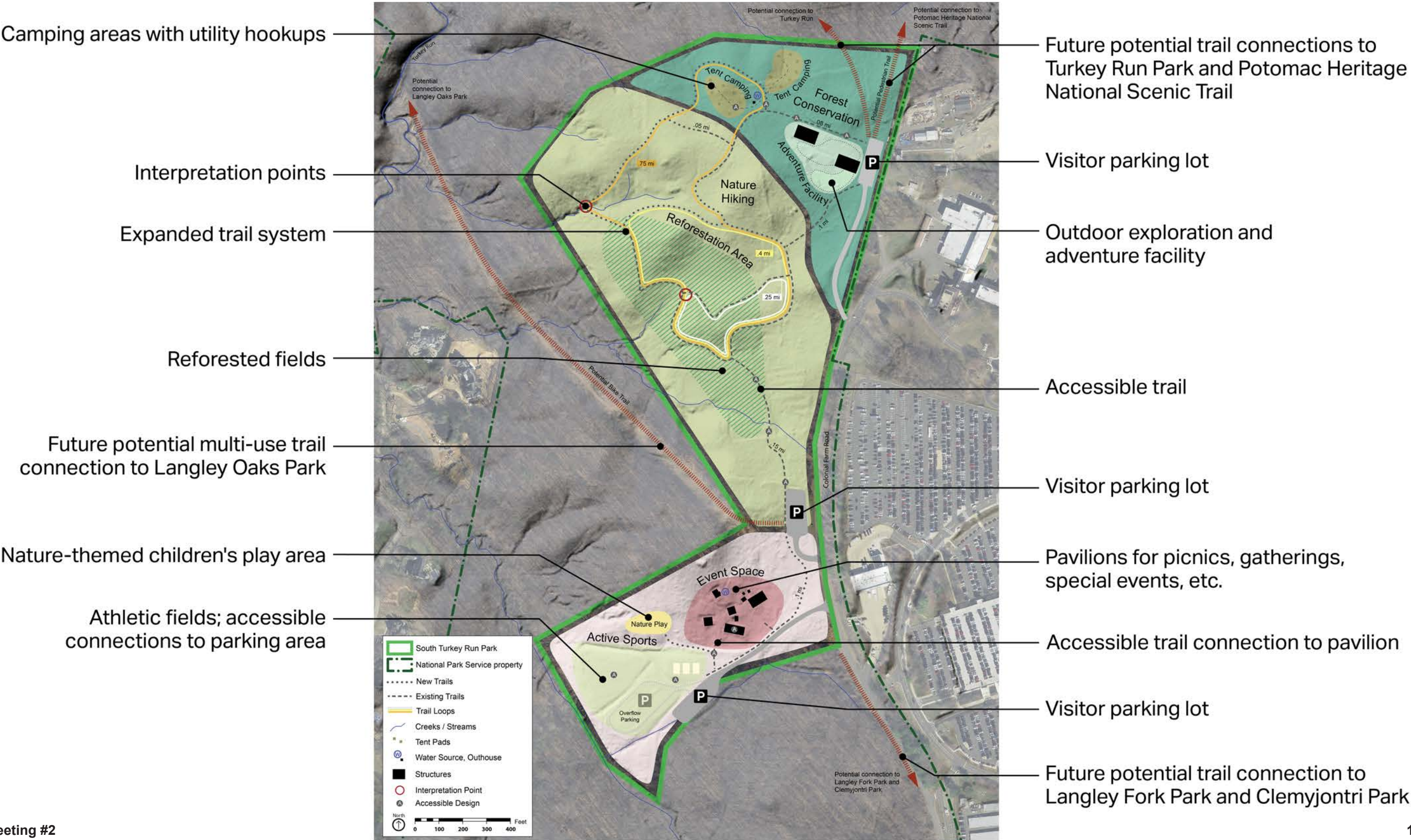
The Adventure + Exploration Concept broadens recreation opportunities in the park by expanding possibilities to experience the wooded environment and engage in active recreation.

- Hike expanded trail loops
- Experience adventure facility
- Camp with utility hookups
- Walk through reforested fields
- Attend events
- Play sports
- Play in nature-inspired area
- Connect to external trails



South Turkey Run Park Concept Plan

The Adventure + Exploration Concept includes multiple improvements and would adaptively reuse the administrative and event pavilion areas.



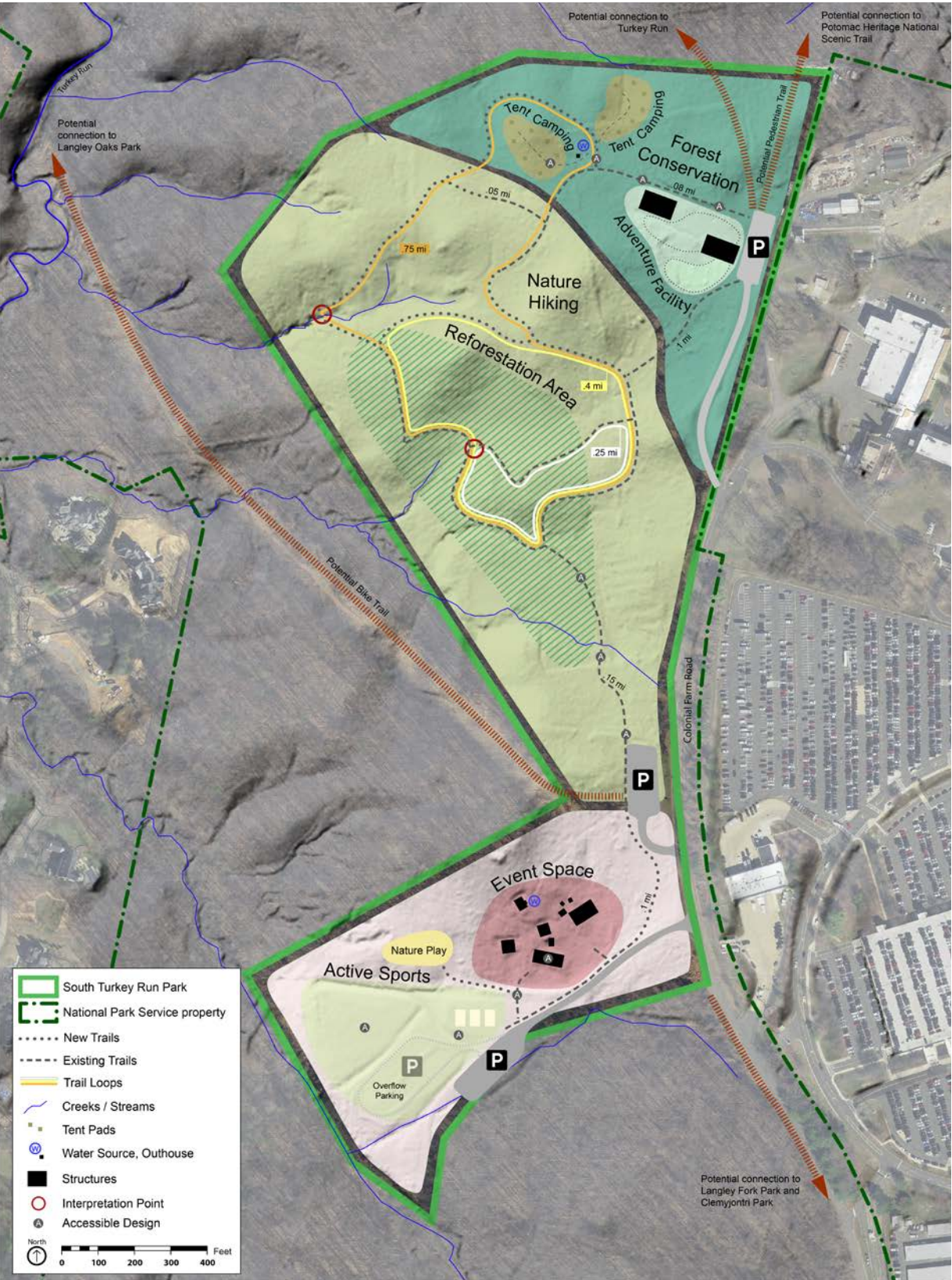


Adventure + Exploration

Trails



Active Sports



Tent Camping



Interpretation Point



Nature Play



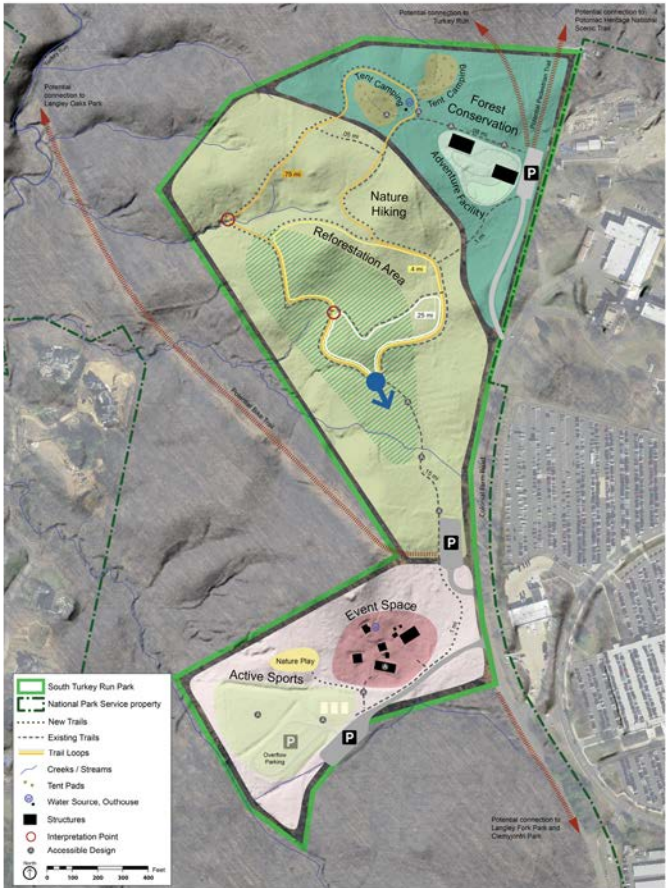


South Turkey Run Park Concept Plan

Adventure + Exploration



Existing conditions

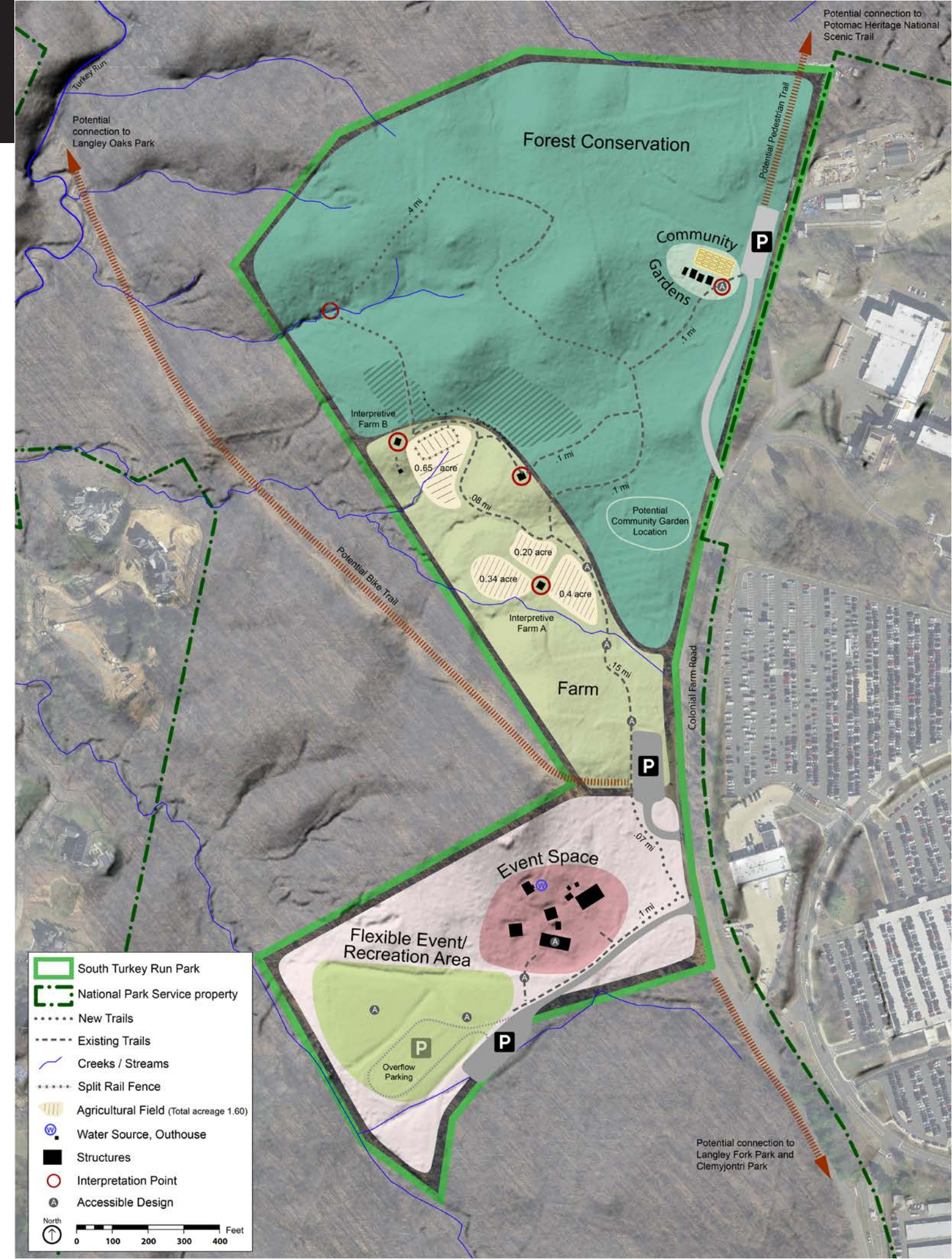


South Turkey Run Park Concept Plan

Cultivation + Connection

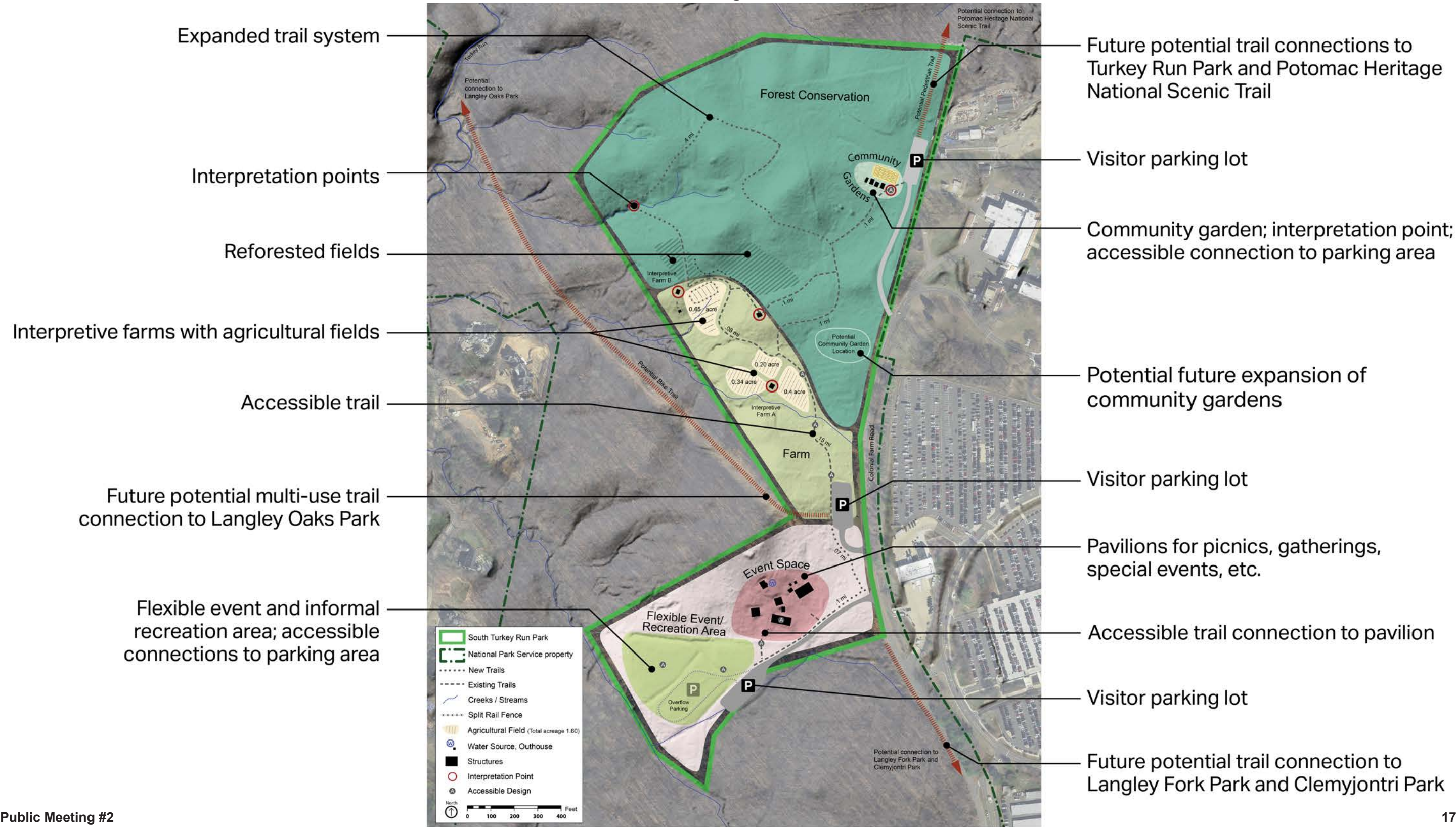
The Cultivation + Connection Concept offers participation in horticulture and education; these activities do not exclude an educational opportunity for a colonial farm experience.

- Grow plants in a community garden plot
- Hike expanded trail loops
- Walk through reforested fields
- Learn at interpretive farms with agricultural fields
- Attend events
- Play sports
- Host an event
- Connect to external trails



South Turkey Run Park Concept Plan

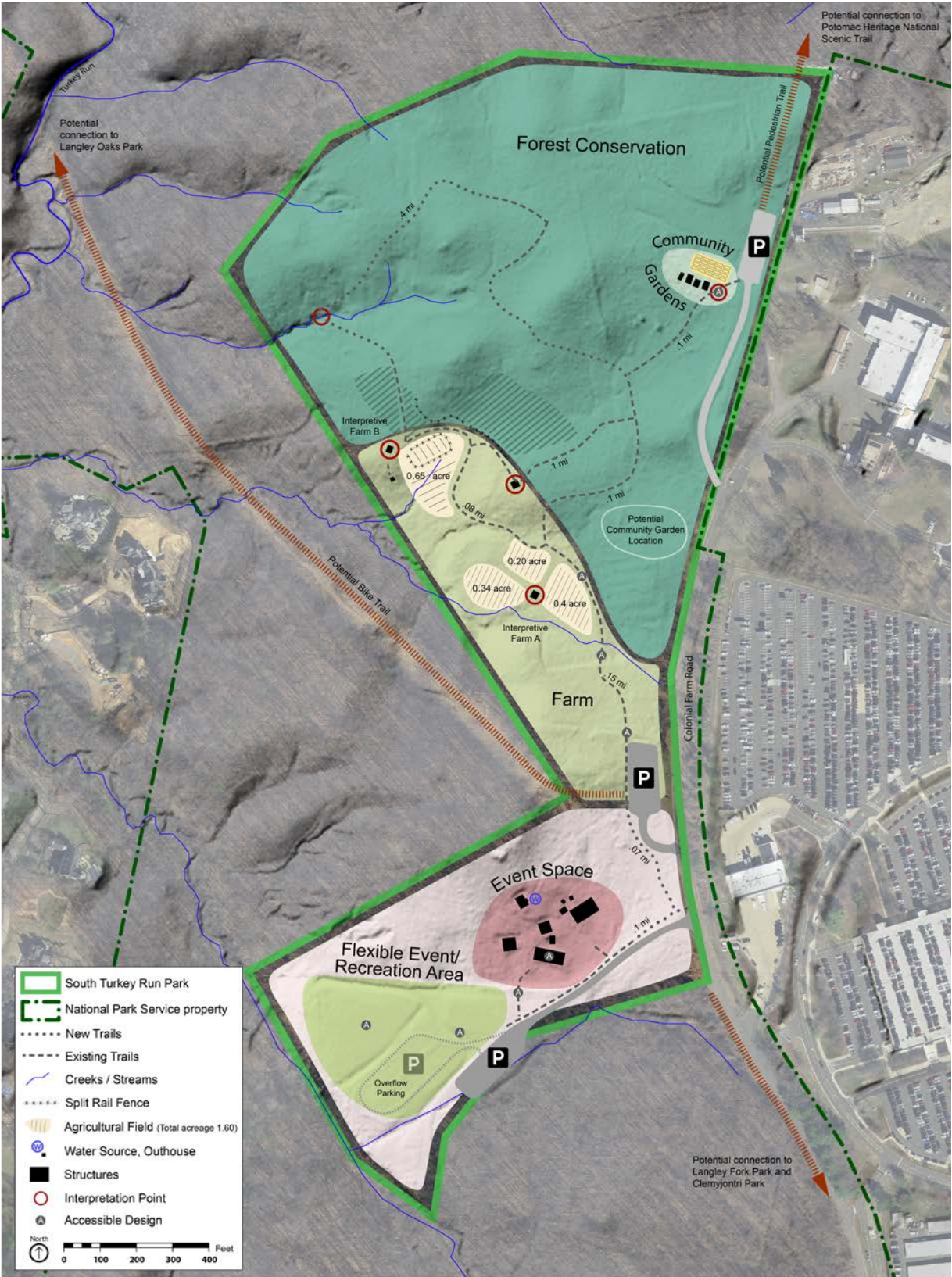
The Cultivation + Connection Concept would reuse the garden facilities, event pavilions, and interpretive structures at the site. Changes would expand recreation activities.





Cultivation + Connection

Interpretive Farm



Community Gardens



Interpretation Point



Flexible Event/Recreation Areas



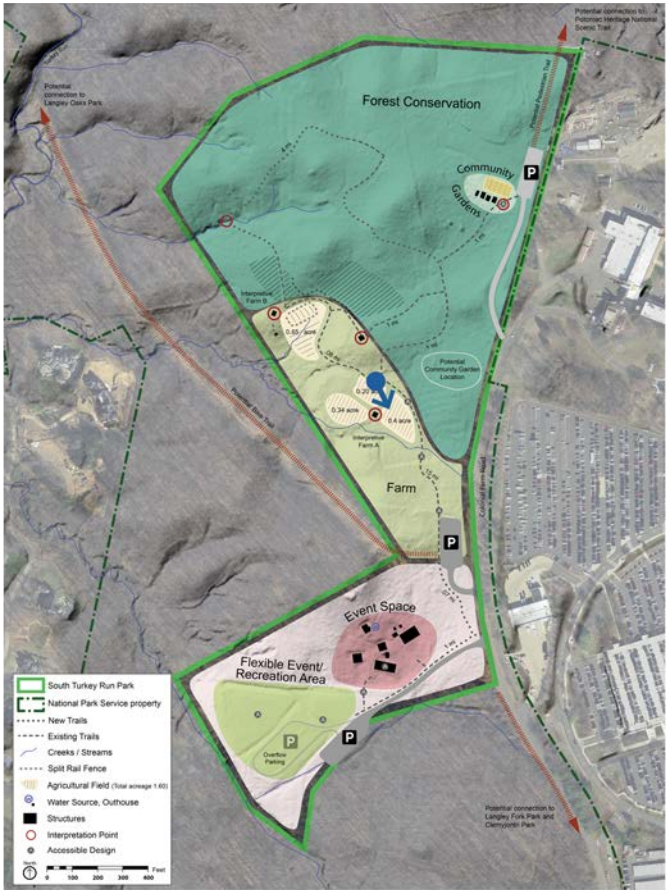


South Turkey Run Park Concept Plan

Cultivation + Connection



Existing conditions

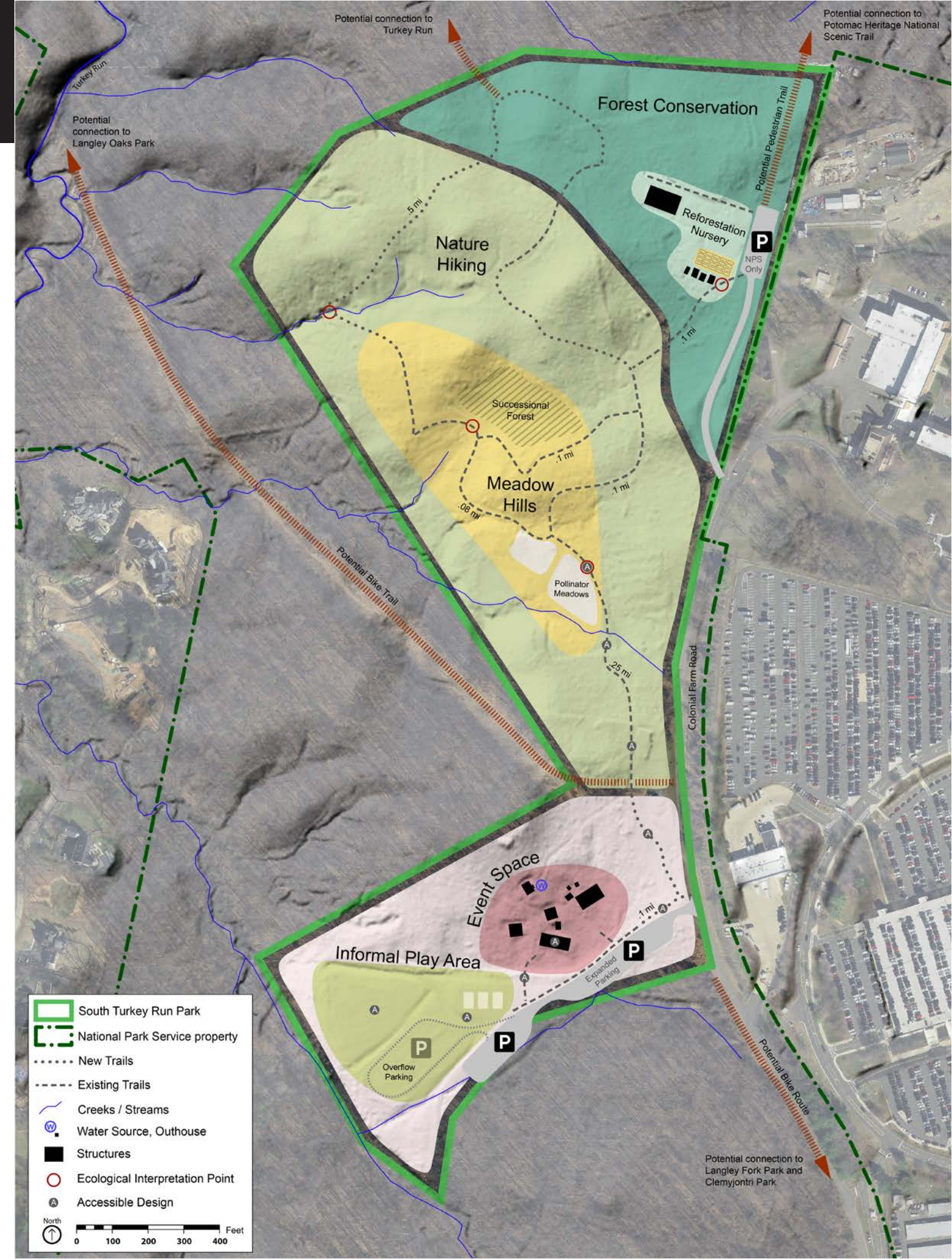


South Turkey Run Park Concept Plan

Rejuvenation + Renewal

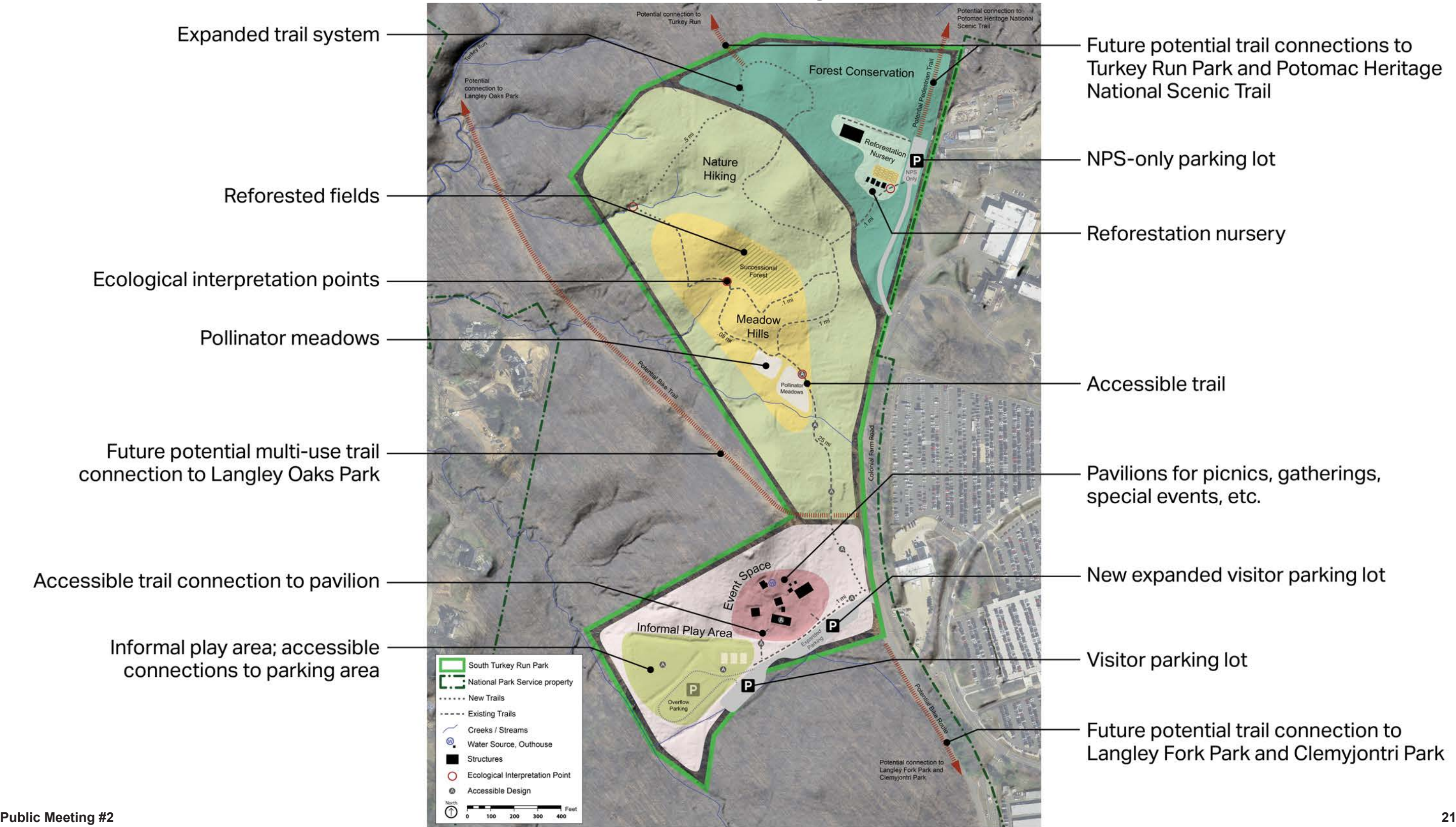
The Rejuvenation + Renewal Concept enhances the range of natural settings that promote personal and ecological well-being.

- Hike loops with ecological interpretation points
- Experience multiple habitat types
- Reuse greenhouse as reforestation nursery
- Host or attend events
- Play in informal area
- Use expanded parking
- Connect to external trails



South Turkey Run Park Concept Plan

The Rejuvenation + Renewal Concept would adapt portions of the administrative and event pavilion areas, as well as establish the following improvements.



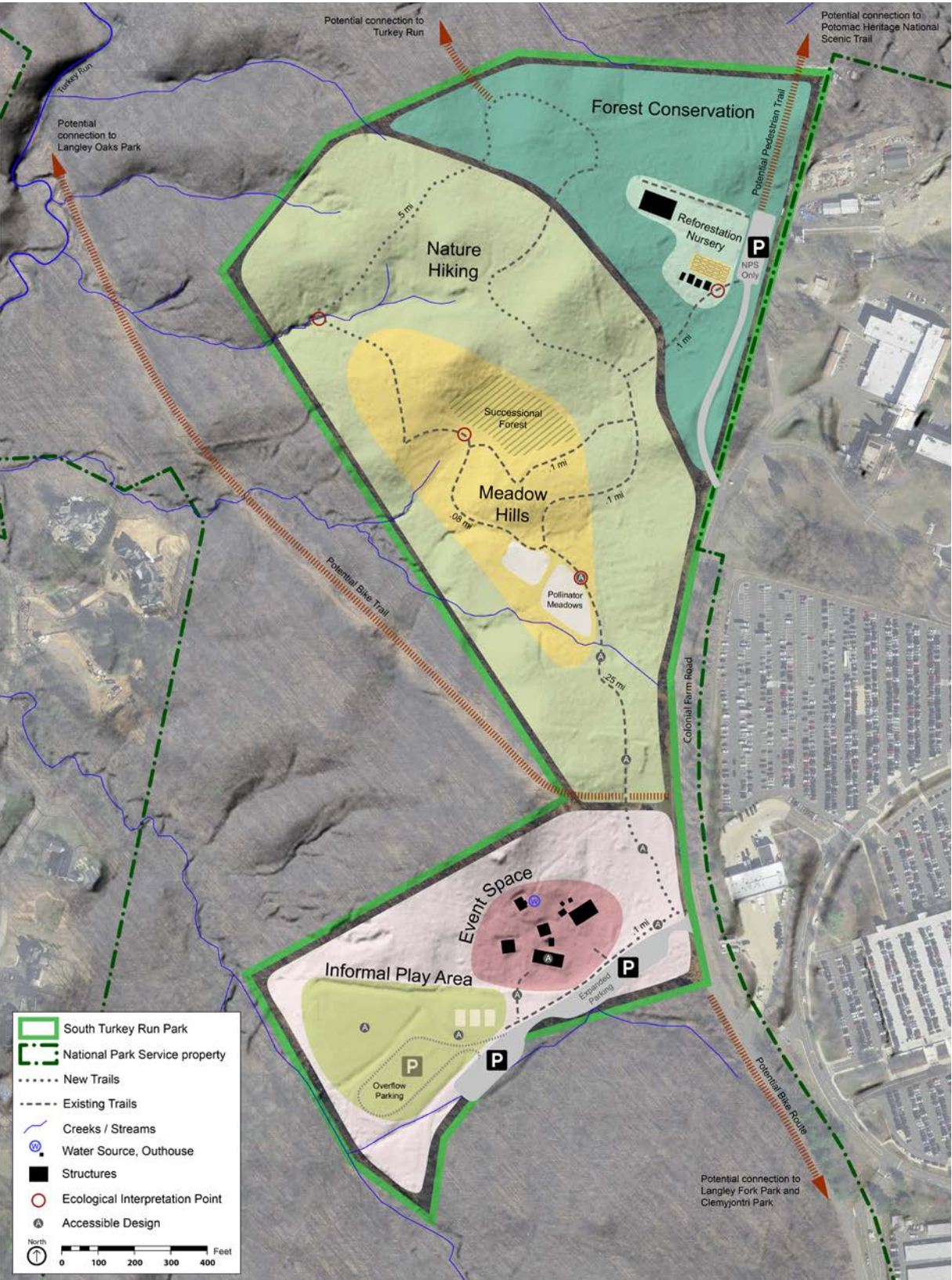


Rejuvenation + Renewal

Hiking/Viewing Wildlife



Informal Play Area



Reforestation Nursery



Ecological Interpretation Point



Pollinator Meadow



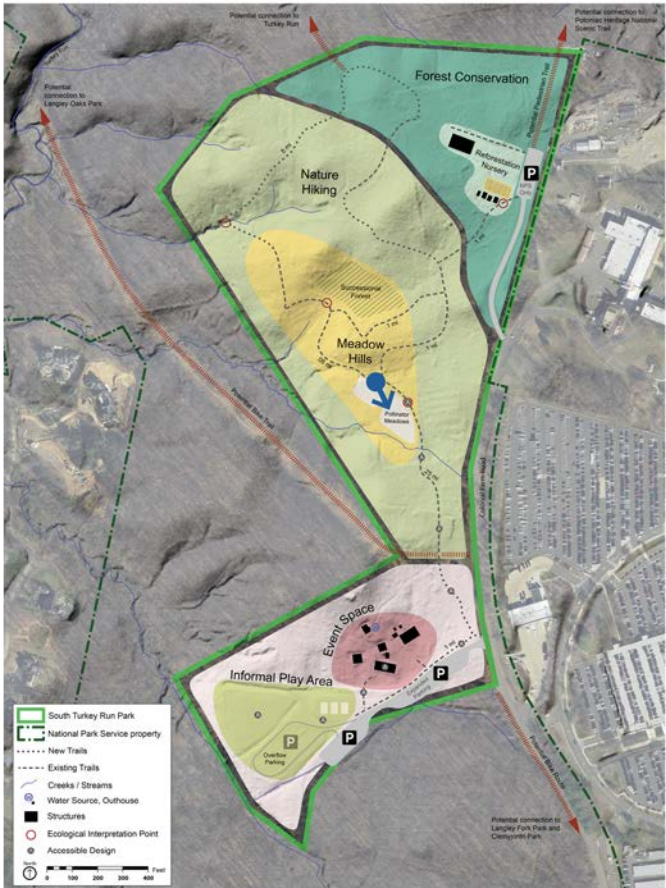


South Turkey Run Park Concept Plan

Rejuvenation + Renewal



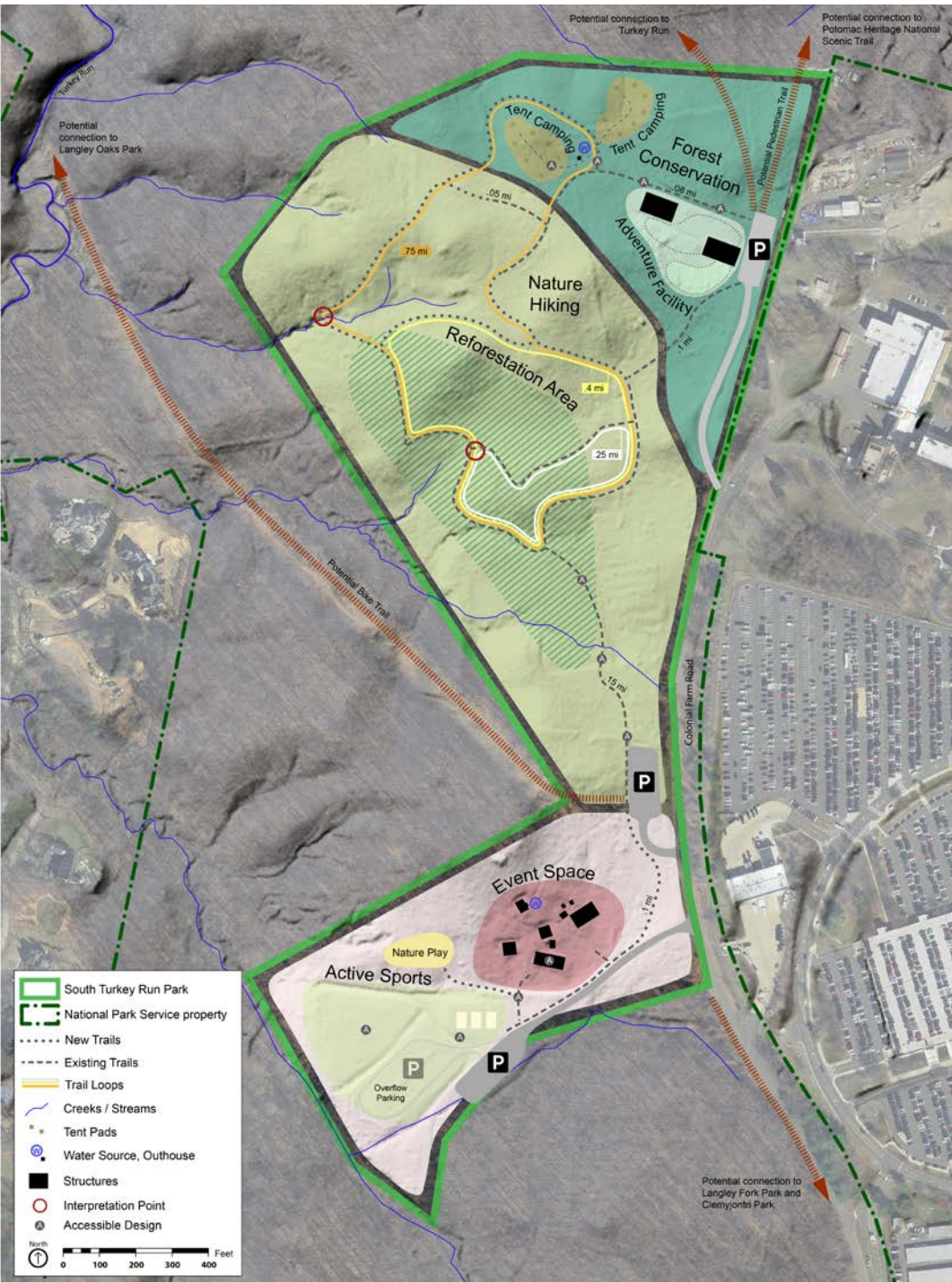
Existing conditions



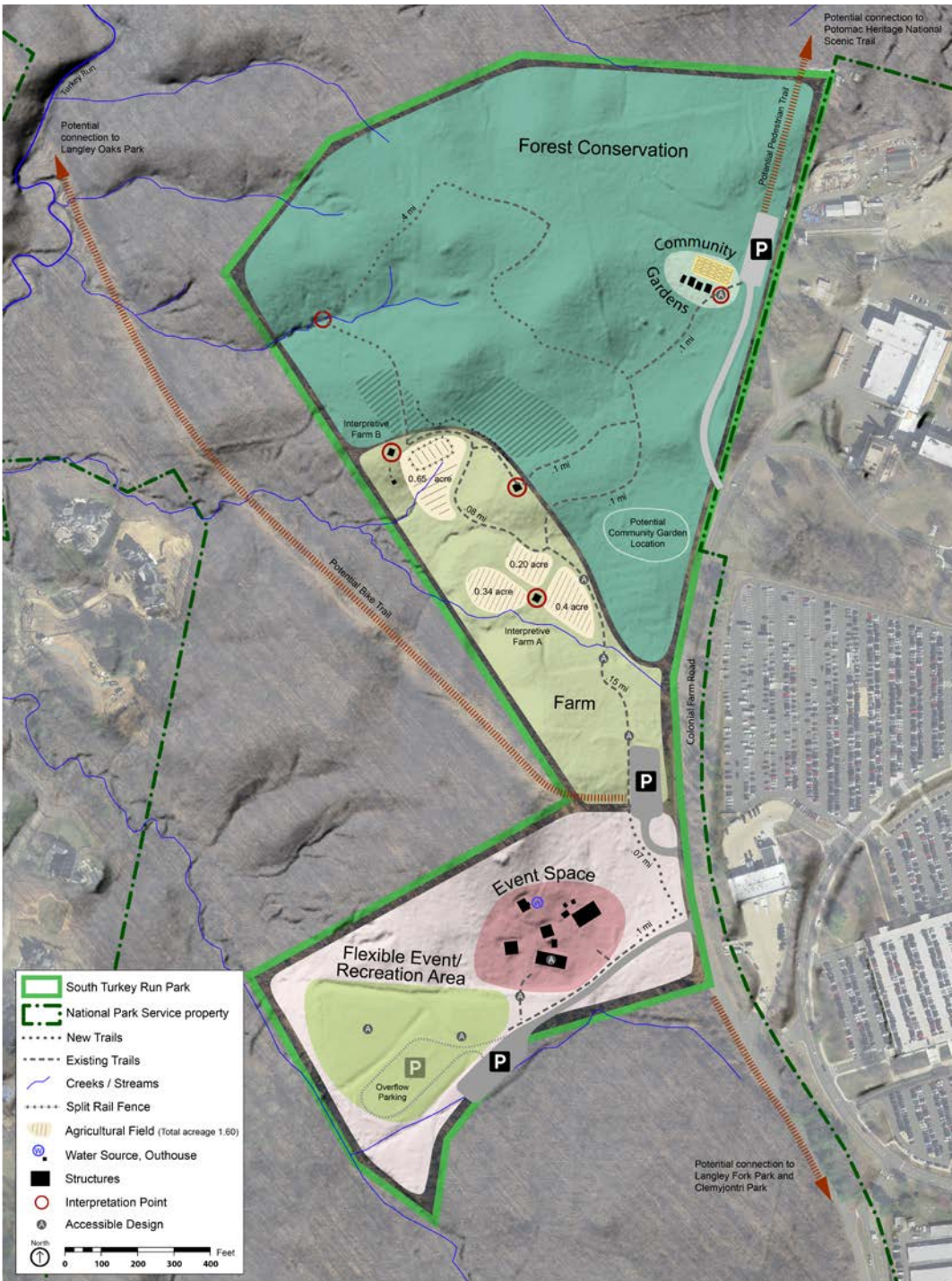


South Turkey Run Park Concept Plan

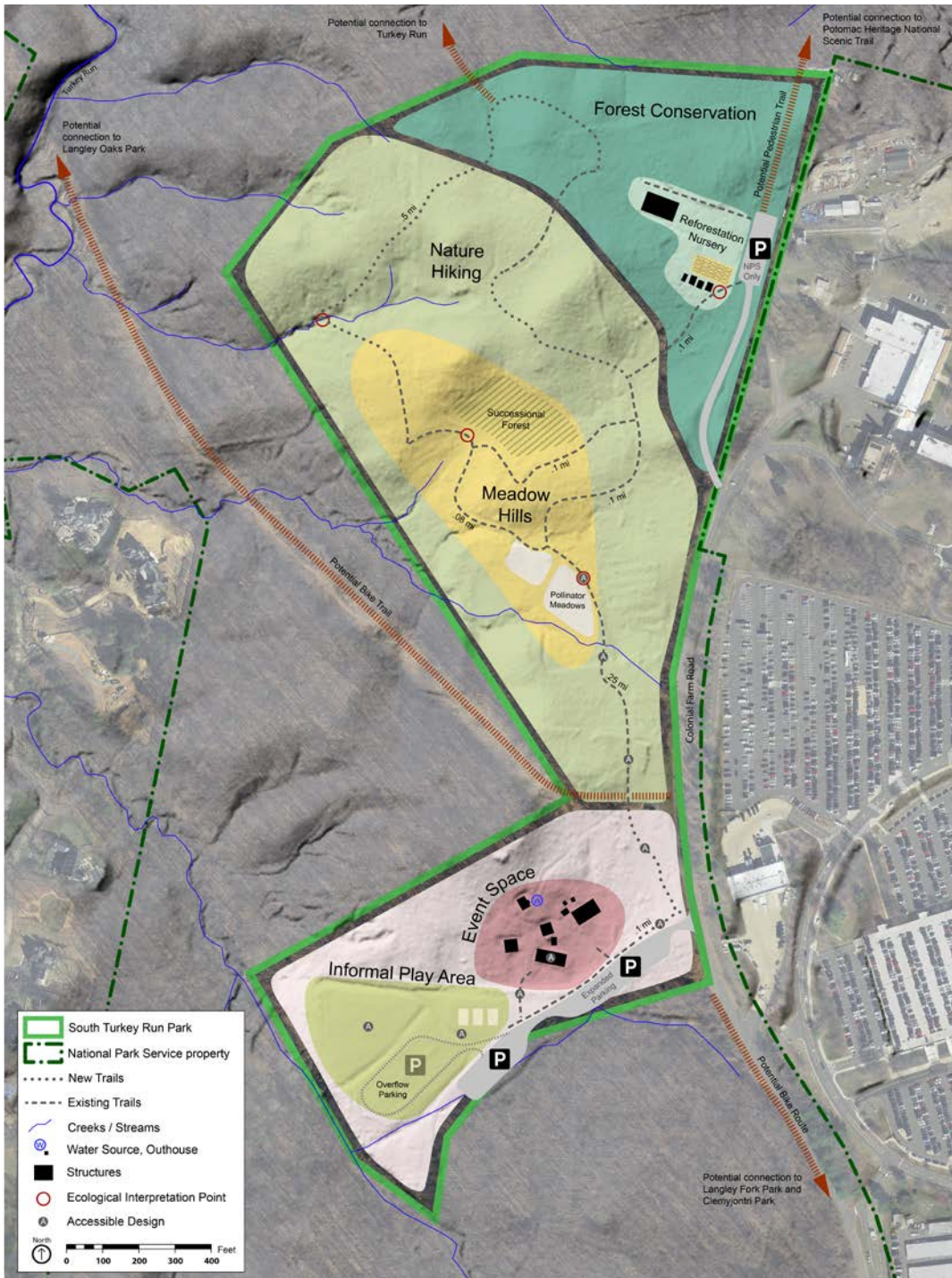
Adventure + Exploration



Cultivation + Connection



Rejuvenation + Renewal



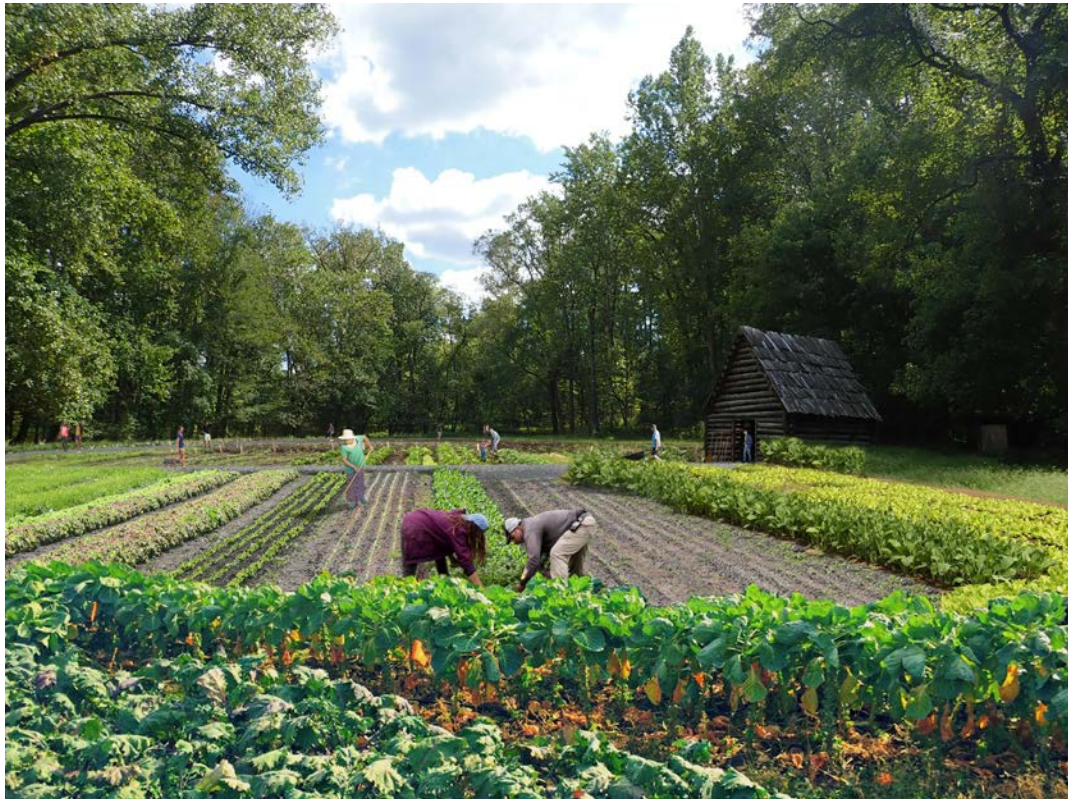


South Turkey Run Park Concept Plan

Adventure + Exploration



Cultivation + Connection



Rejuvenation + Renewal



Existing Conditions



South Turkey Run Park Concept Plan

How Can You Submit Comments?

Please provide feedback on the concepts.

During this Meeting

- Fill out a comment form

After this Meeting

- **Online:** Submit a comment form online by **October 26, 2019** at http://parkplanning.nps.gov/STR_future

- **Written comments can be mailed to:**

George Washington Memorial Parkway
Attn: Superintendent
700 George Washington Memorial Parkway
c/o Turkey Run Park
McLean, VA 22101

- **Mailed comments** must be postmarked by **October 26, 2019** to receive consideration

For more information visit: [go.nps.gov/ClaudeMooreFuture](https://www.nps.gov/ClaudeMooreFuture)



South Turkey Run Park Concept Plan

Question & Answer

- Identify yourself prior to asking questions
- Be courteous of others (don't interrupt) and avoid personal attacks
- Limit your questions to the topic being discussed
- We expect to hear from all attendees: don't just be an observer



Thank You!

7:30-8pm

Open House/Discussion at Boards

go.nps.gov/ClaudeMooreFuture