

Santa Fe National Historic Trail

National Park Service
U.S. Department of the Interior



Dear Neighbors and Friends,

I am excited to announce that we are in the early stages of preparing a Foundation Document for planning and administering the Santa Fe National Historic Trail. I invite you to join in this effort.

A Foundation Document involves revisiting a national historic trail's purpose and significance, most important resources and values, and the interpretive themes that tell its important stories. Although the Foundation Document is not a decision-making document and does not include actions or administration strategies, it describes a shared understanding of what is most important about the trail. In this capacity, the Foundation Document will serve as the underlying guidance for future planning decisions for the Santa Fe National Historic Trail.

Your voice is important to us. I invite you to share your thoughts on what is most important about the Santa Fe

National Historic Trail, and to help identify its most pressing threats and its greatest opportunities. We ask that you read and reflect on the questions provided on this comment card so that we may take your thoughts into consideration as we develop the Foundation Document. You may submit your feedback in two different ways:

- Write your responses to the questions on the back of this card and drop it in the mail by October 10 so that we can receive and consider your feedback in a timely manner
- Enter your responses directly online between September 20 and October 20 at:
<http://parkplanning.nps.gov/SAFEfoundation>

Thank you for your interest in the Santa Fe National Historic Trail. I look forward to hearing from you as we continue to chart its future.

Aaron Mahr, Superintendent
Santa Fe National Historic Trail

KEY QUESTIONS

1. What do you value most about the Santa Fe National Historic Trail?

2. What do you think are the most important resources of the Santa Fe National Historic Trail? Are there opportunities to increase the preservation of these trail resources?

3. What do you think the public should know about the Santa Fe National Historic Trail? What are its most important stories?

4. What do you think are the greatest issues or threats facing the Santa Fe National Historic Trail?

5. What opportunities for the public to learn about and enjoy the Santa Fe National Historic Trail would you like to see explored or developed?

Please be aware that due to public disclosure requirements, the National Park Service, if requested, is required to make comments and the names and addresses of commenters public. However, individual respondents may request that we withhold their name and address from the public record, which we will honor to the extent allowable by law. If you wish to withhold your name and or address from the public record, please check the box. ☐ Please withhold my name and address from the public record to the extent allowable by law.

UNITED STATES DEPARTMENT OF THE INTERIOR
NATIONAL PARK SERVICE
DENVER SERVICE CENTER - CARRIE MILLER, PLANNING DIVISION
ATTN: SANTA FE NATIONAL HISTORIC TRAIL - FOUNDATION

PO BOX 25287
DENVER CO 80225-0287

OFFICIAL BUSINESS
PENALTY FOR PRIVATE USE \$300



BUSINESS REPLY MAIL

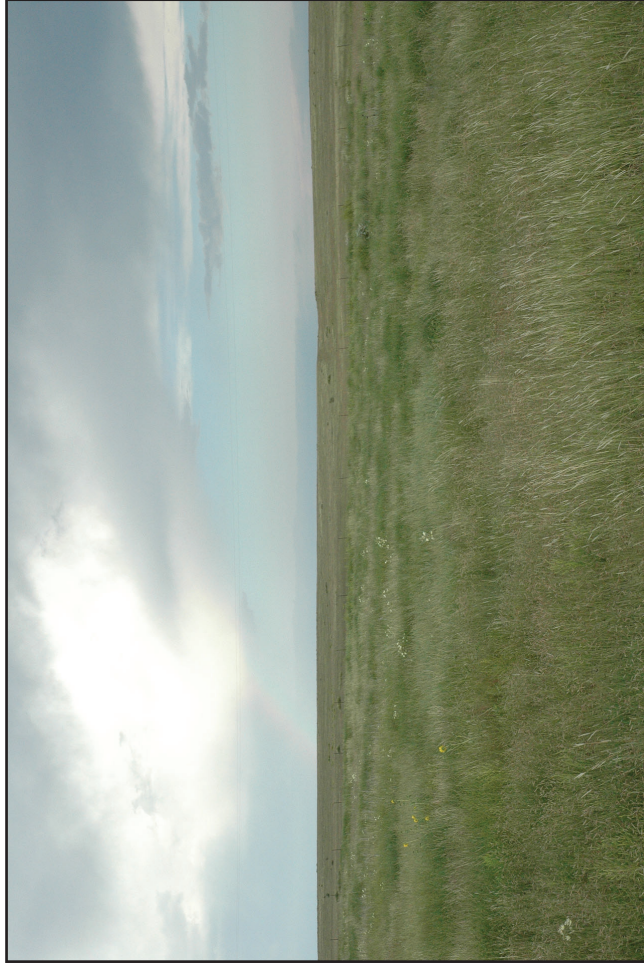
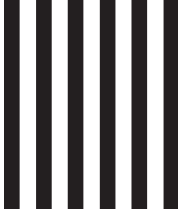
FIRST CLASS MAIL PERMIT NO. 12651 WASHINGTON, D.C.

POSTAGE WILL BE PAID BY ADDRESSEE

NATIONAL PARK SERVICE
DENVER SERVICE CENTER - PLANNING DIVISION
ATTN: CARRIE MILLER
SANTA FE NATIONAL HISTORIC TRAIL - FOUNDATION
PO BOX 25287
DENVER, CO 80225-9901



NO POSTAGE
NECESSARY
IF MAILED
IN THE
UNITED STATES



TO MAIL BACK, FOLD HERE AND TAPE BELOW (NO STAPLES PLEASE)



Your ideas are welcome and encouraged! Comments can be submitted the following ways and are most helpful if received by **October 20, 2019**.

1. Share your comments online at: <http://parkplanning.nps.gov/SAFE>
2. Print this comment form on cardstock and mail it in (please drop it in the mail by October 10)

Name: _____

Organization (if any): _____

Address: _____

City/State/Zip: _____

Email: _____