

Grand Canyon National Park

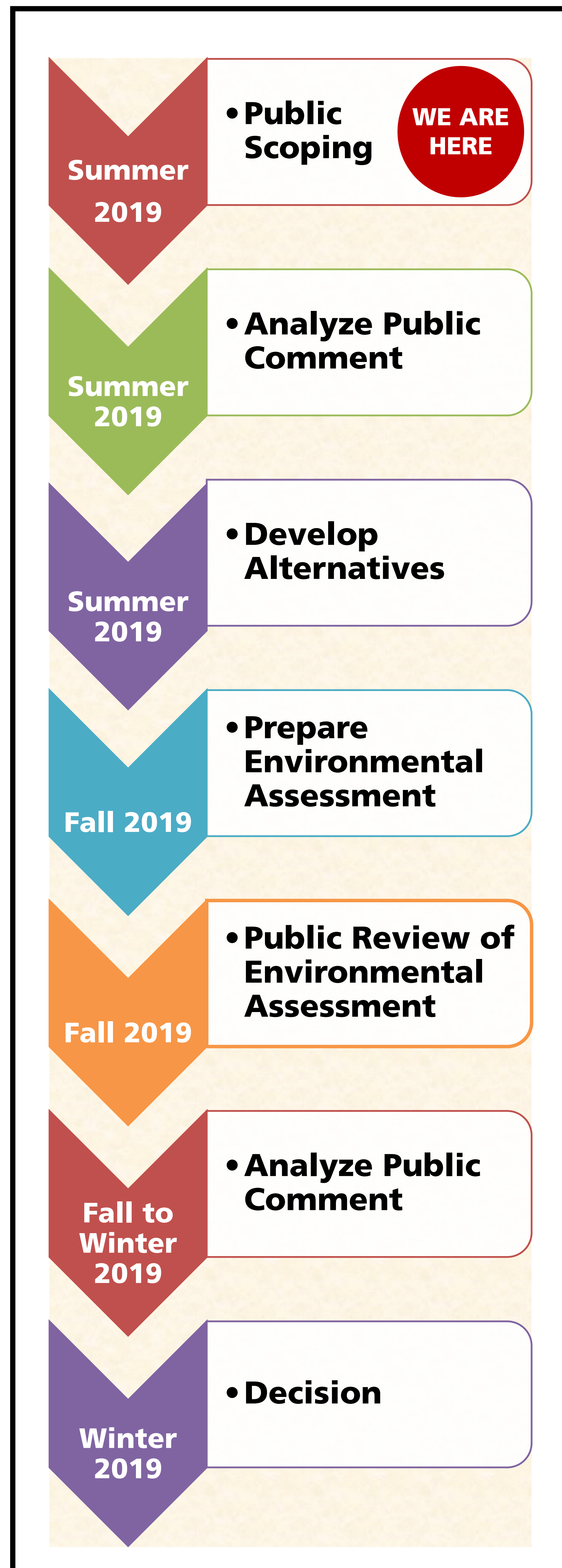
Telecommunications Plan / Environmental Assessment

Public Scoping Webinar
August 6, 2019 | 12:00 - 1:00PM MST





Planning Process



Next Steps in the Planning Process

Comments will be accepted through August 20, 2019.

The planning team will evaluate public comments for consideration in the preparation of the Environmental Assessment. The public will have an opportunity to review and comment on the Environmental Assessment when it is complete.

The NPS intends to make a decision on this planning effort by the end of the calendar year.

For more information visit: <https://parkplanning.nps.gov/GCTelecommunications>



Need

- address substantial cellular service and bandwidth deficiencies within developed areas of the park that currently inhibit National Park Service operations as well as the activities of visitors and park partners and
- develop guidance for the types and locations of telecommunications infrastructure within the park that minimizes impacts to park resources.

Purpose

The purpose of this Telecommunications Plan is to identify appropriate types and locations of telecommunications infrastructure and services within Grand Canyon National Park in order to provide sufficient and reliable cellular and internet/wireless coverage, two-way radio communications, and data network capacity to meet the needs of visitors, the National Park Service, and park partners within developed areas of the park.



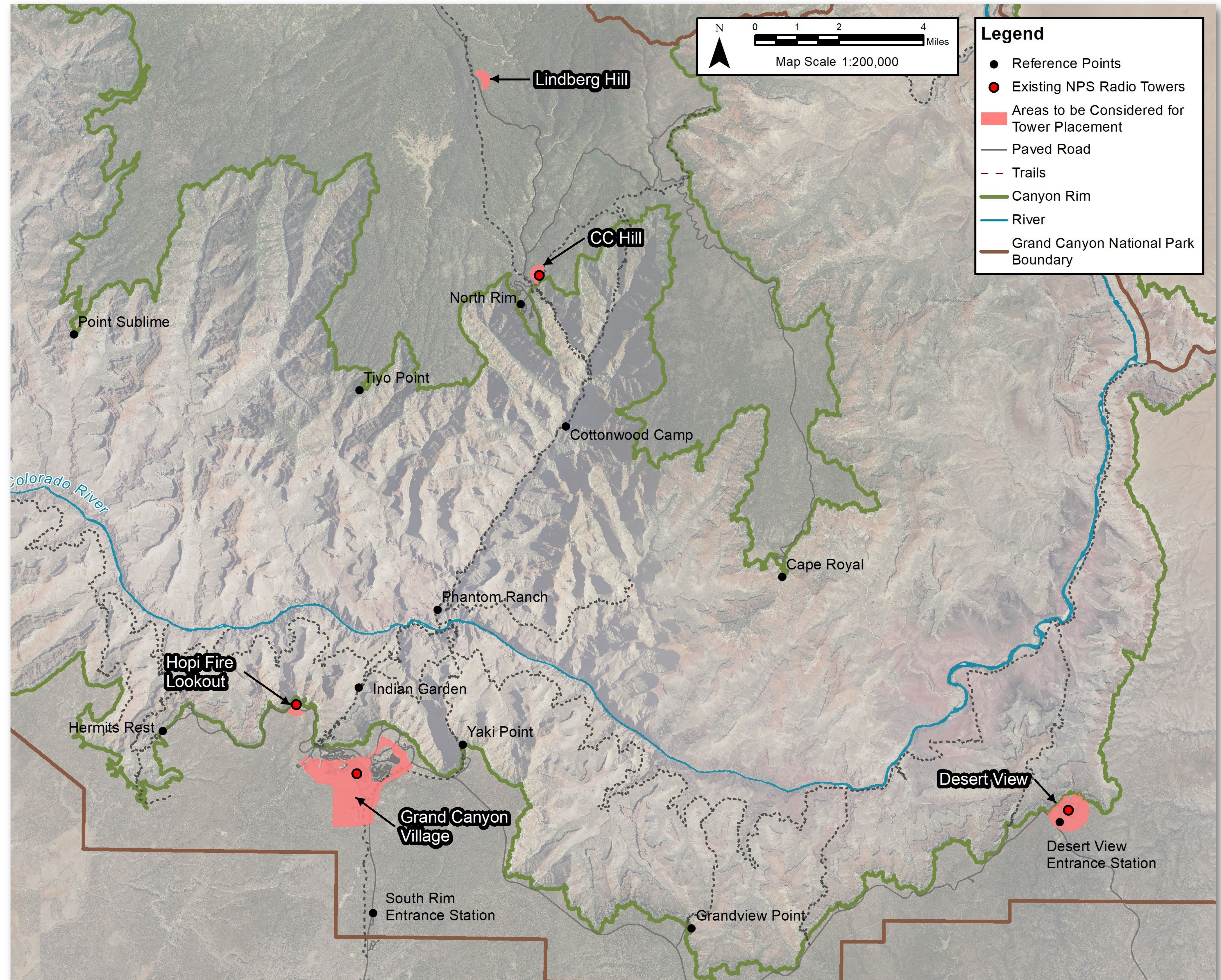
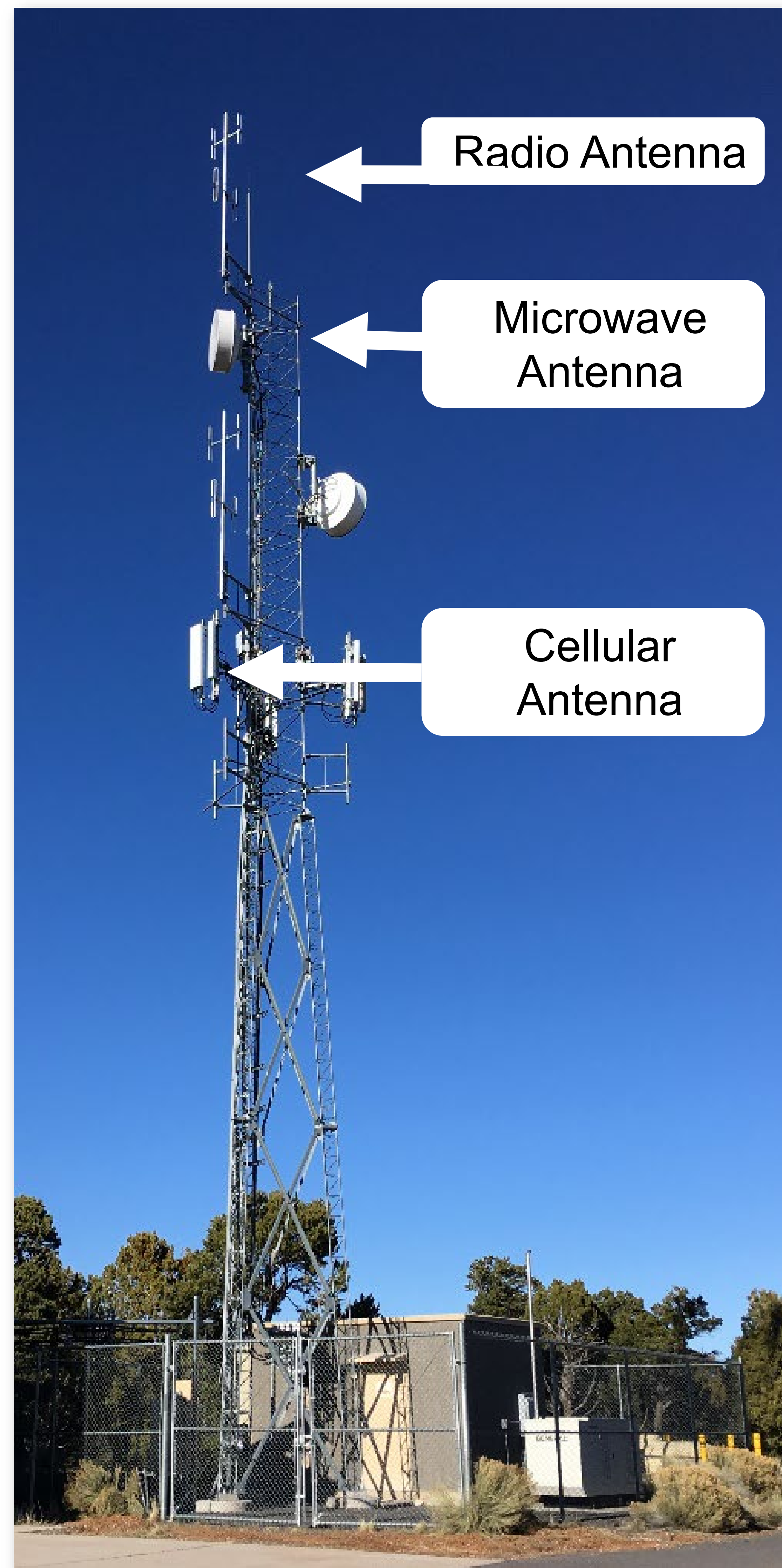


Proposed Action - Overview



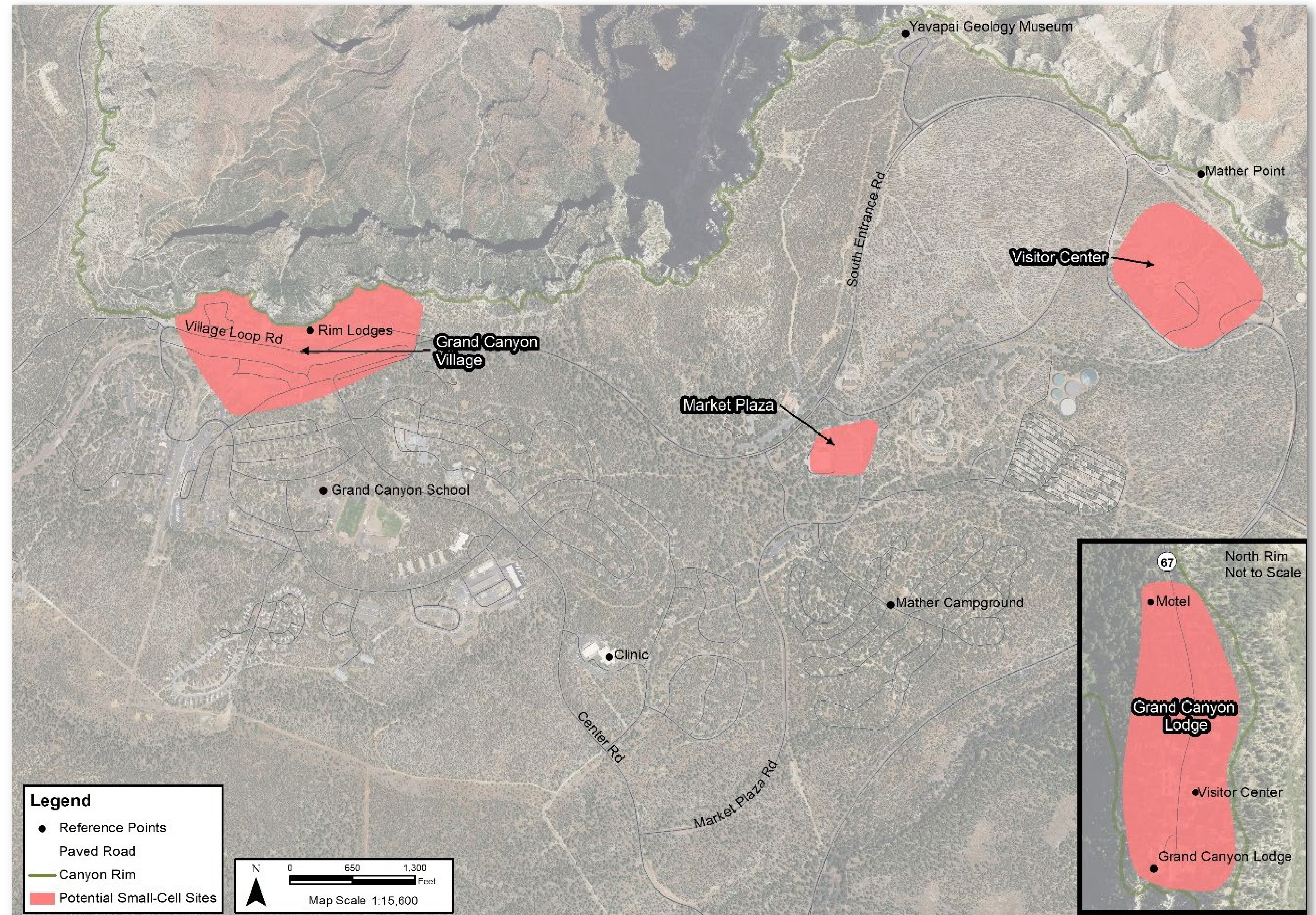


Proposed Action - Towers



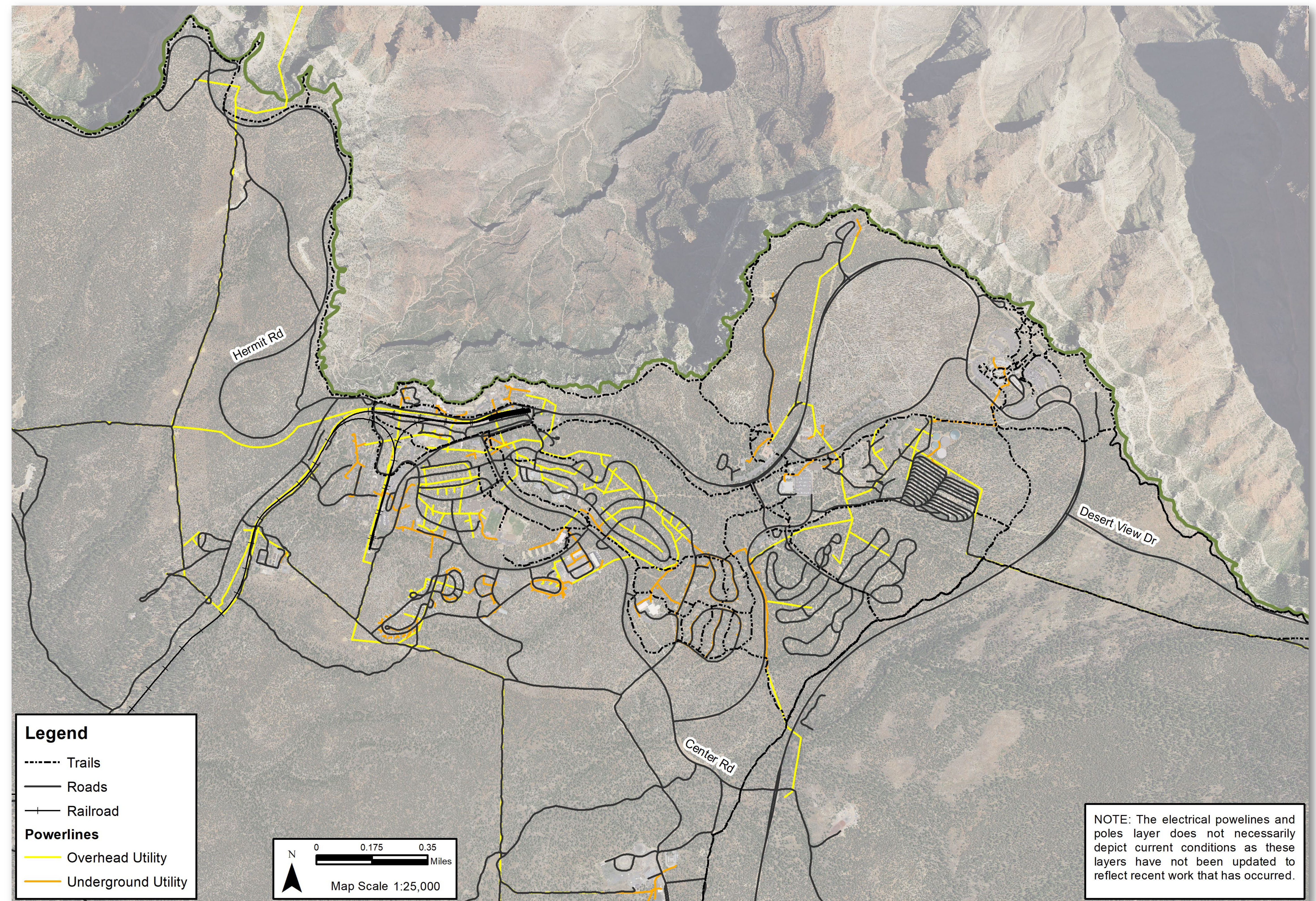


Proposed Action – Small Cell Nodes





Proposed Action – Backhaul (Antenna and Fiber)





Initial Resource Concerns





How to Comment

**Comments accepted until midnight
August 20, 2019 (MDT)**

Online:

<https://parkplanning.nps.gov/GCTelecommunications>

Preferred

Mail:

Superintendent
Attn: Telecommunications Plan EA
Grand Canyon National Park
P.O. Box 129
Grand Canyon, AZ 86023



Grand Canyon National Park Telecommunications Plan / Environmental Assessment

National Park Service
U.S. Department of the Interior

