

FIGURE D-11. ALTERNATIVE C (1) MISSISSIPPI DISTRICT



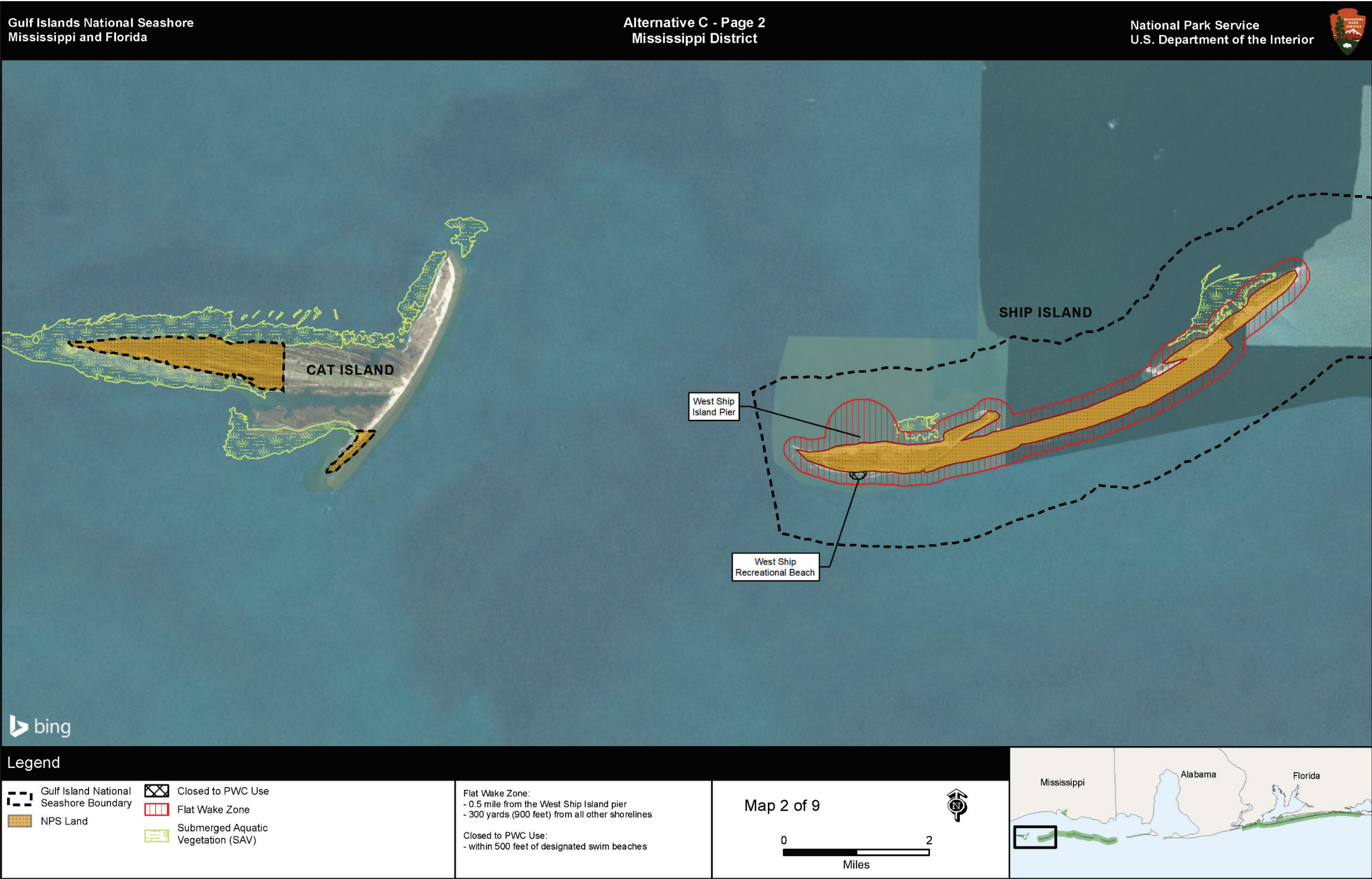


FIGURE D-12. ALTERNATIVE C (2) MISSISSIPPI DISTRICT



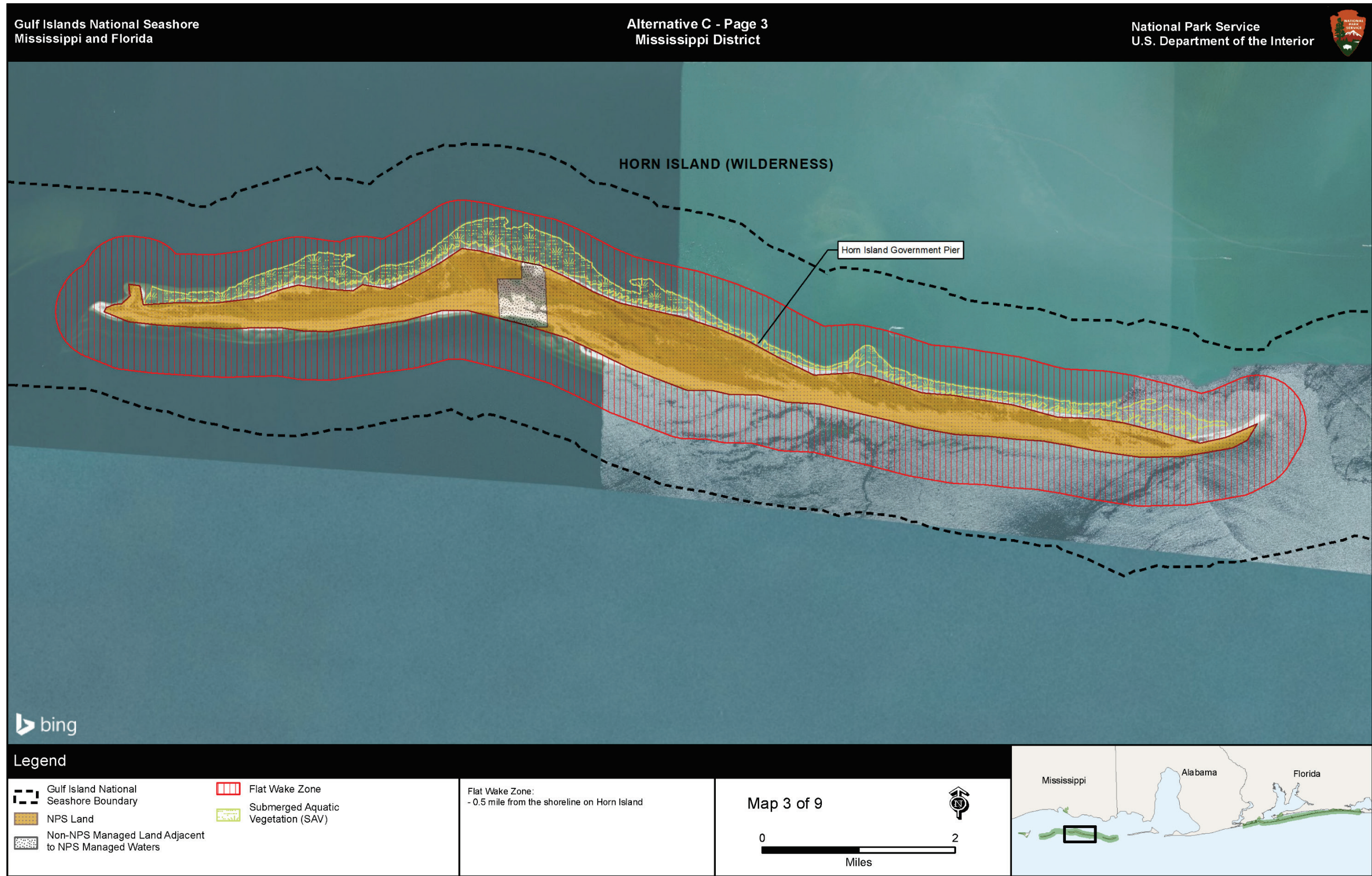


FIGURE D-13. ALTERNATIVE C (3) MISSISSIPPI DISTRICT



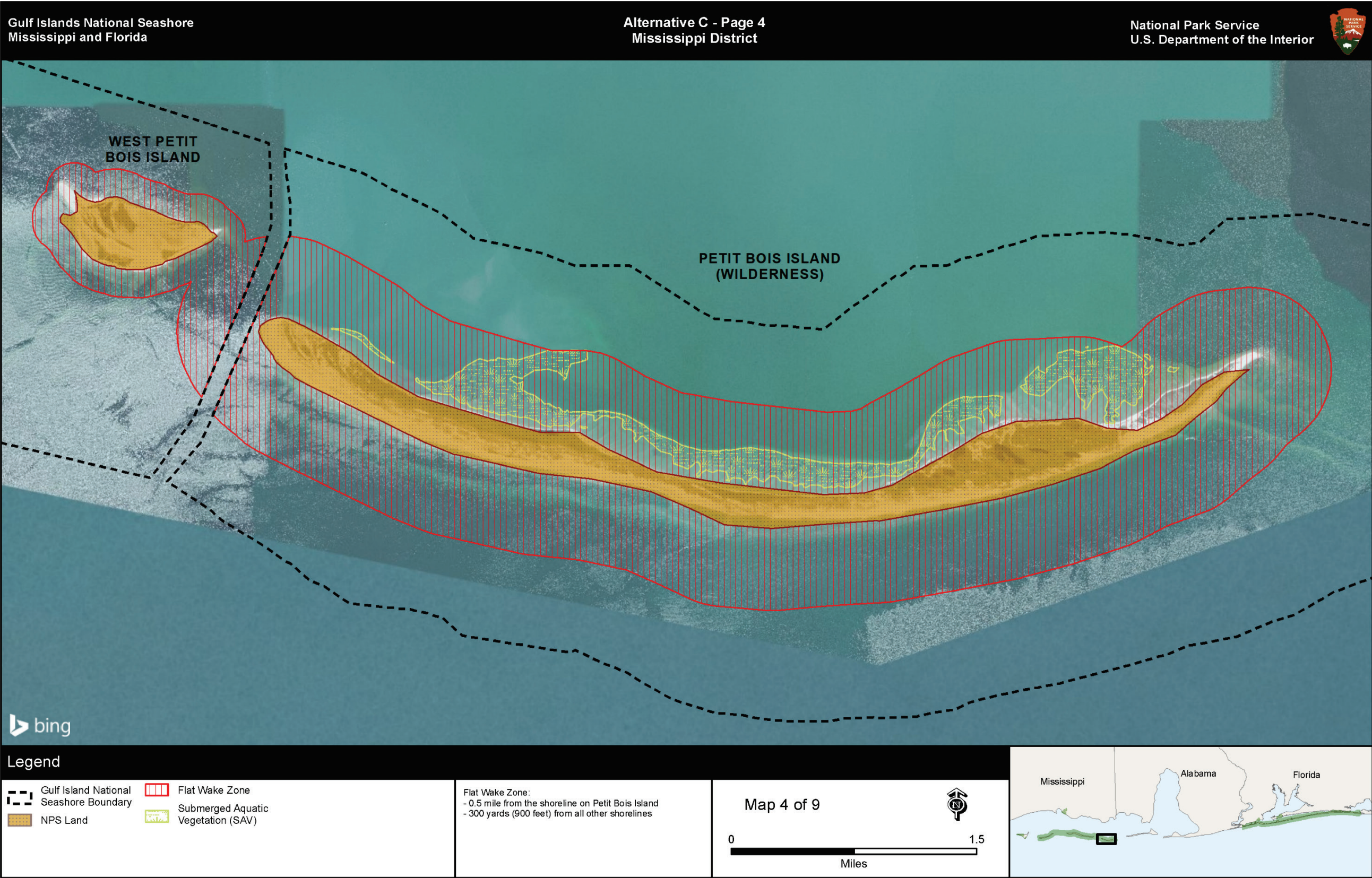
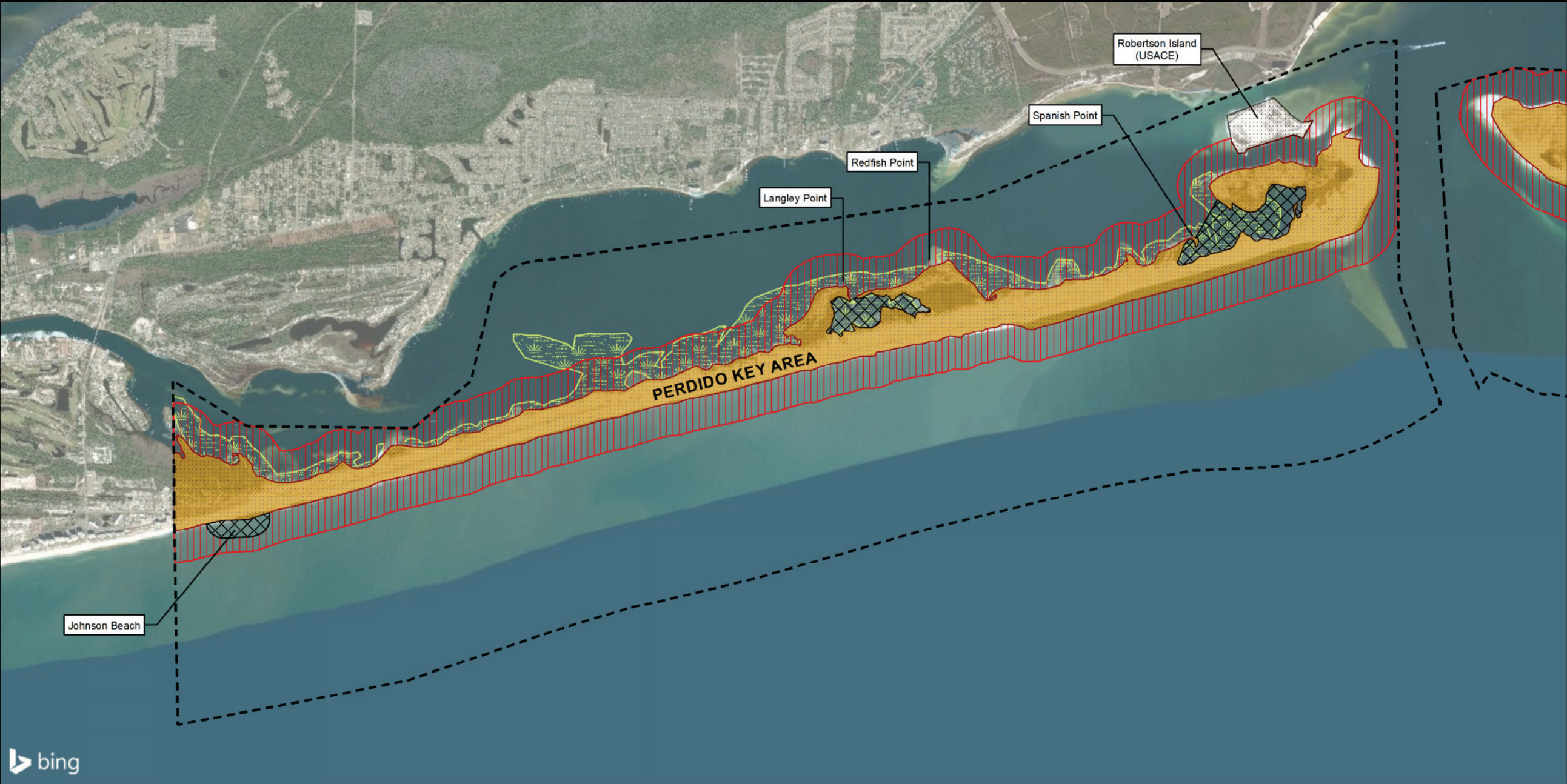


FIGURE D-14. ALTERNATIVE C (4) MISSISSIPPI DISTRICT





Legend

- |  |                                    |
|--|------------------------------------|
| Gulf Island National Seashore Boundary | Closed to PWC Use                  |
| NPS Land                               | Flat Wake Zone                     |
| Other Federal Land                     | Submerged Aquatic Vegetation (SAV) |

Flat Wake Zone:  
- 300 yards (900 feet) from all other shorelines

Closed to PWC Use:  
- within 500 feet of designated swim beaches  
- Perdido Key lagoons

Map 5 of 9



FIGURE D-15. ALTERNATIVE C (5) FLORIDA DISTRICT



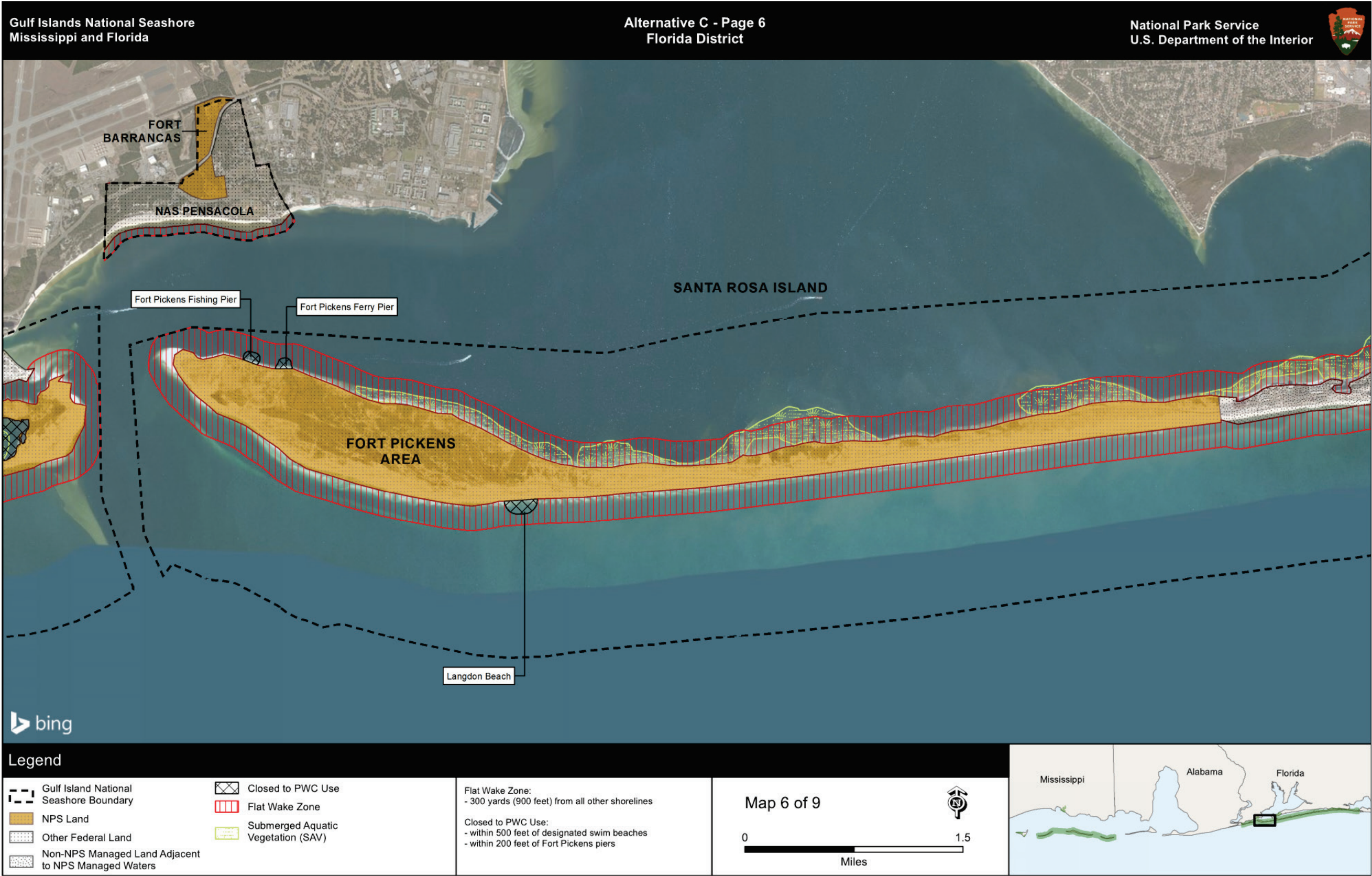


FIGURE D-16. ALTERNATIVE C (6) FLORIDA DISTRICT



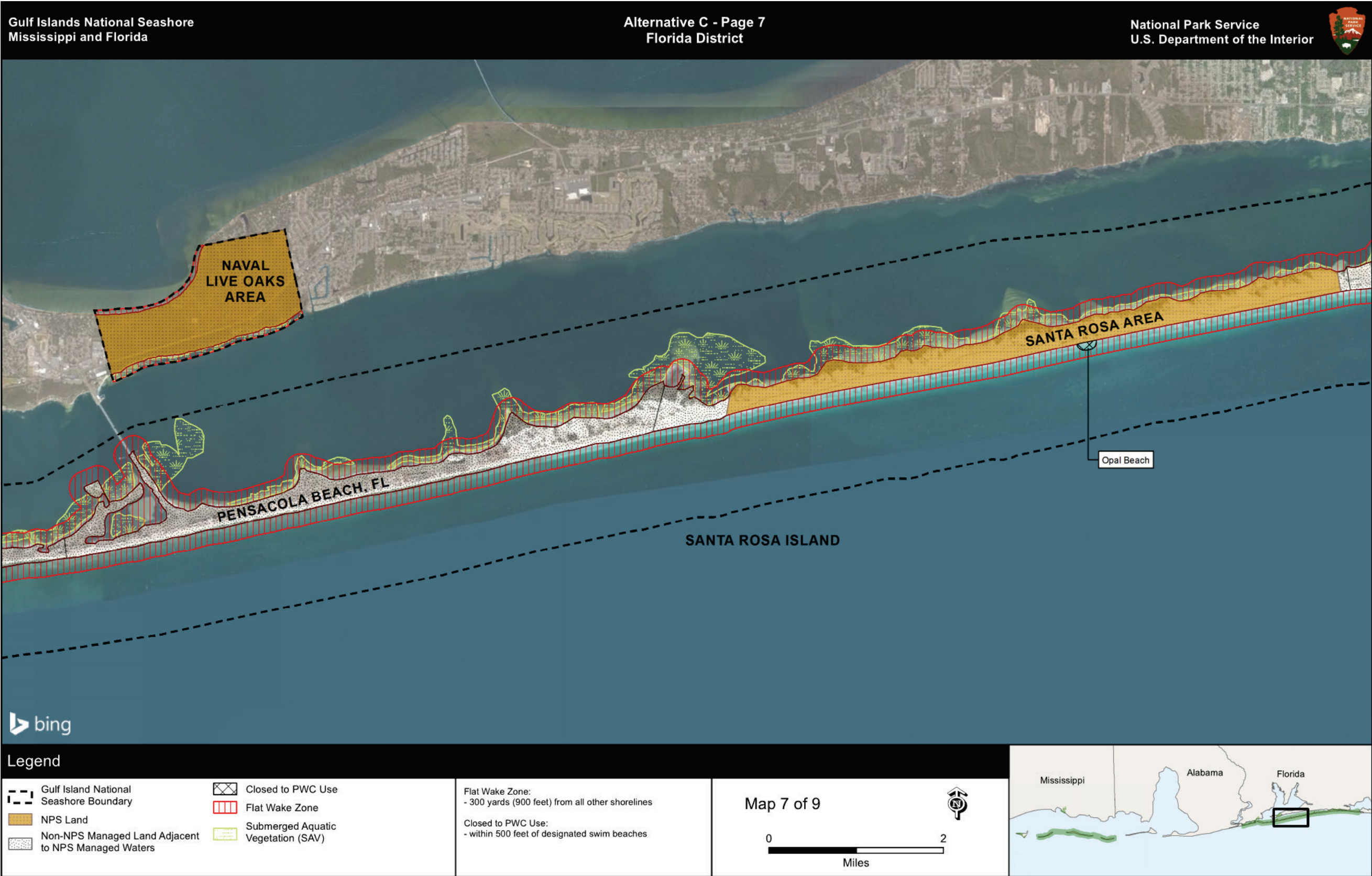


FIGURE D-17LTERNATIVE C (7) FLORIDA DISTRICT



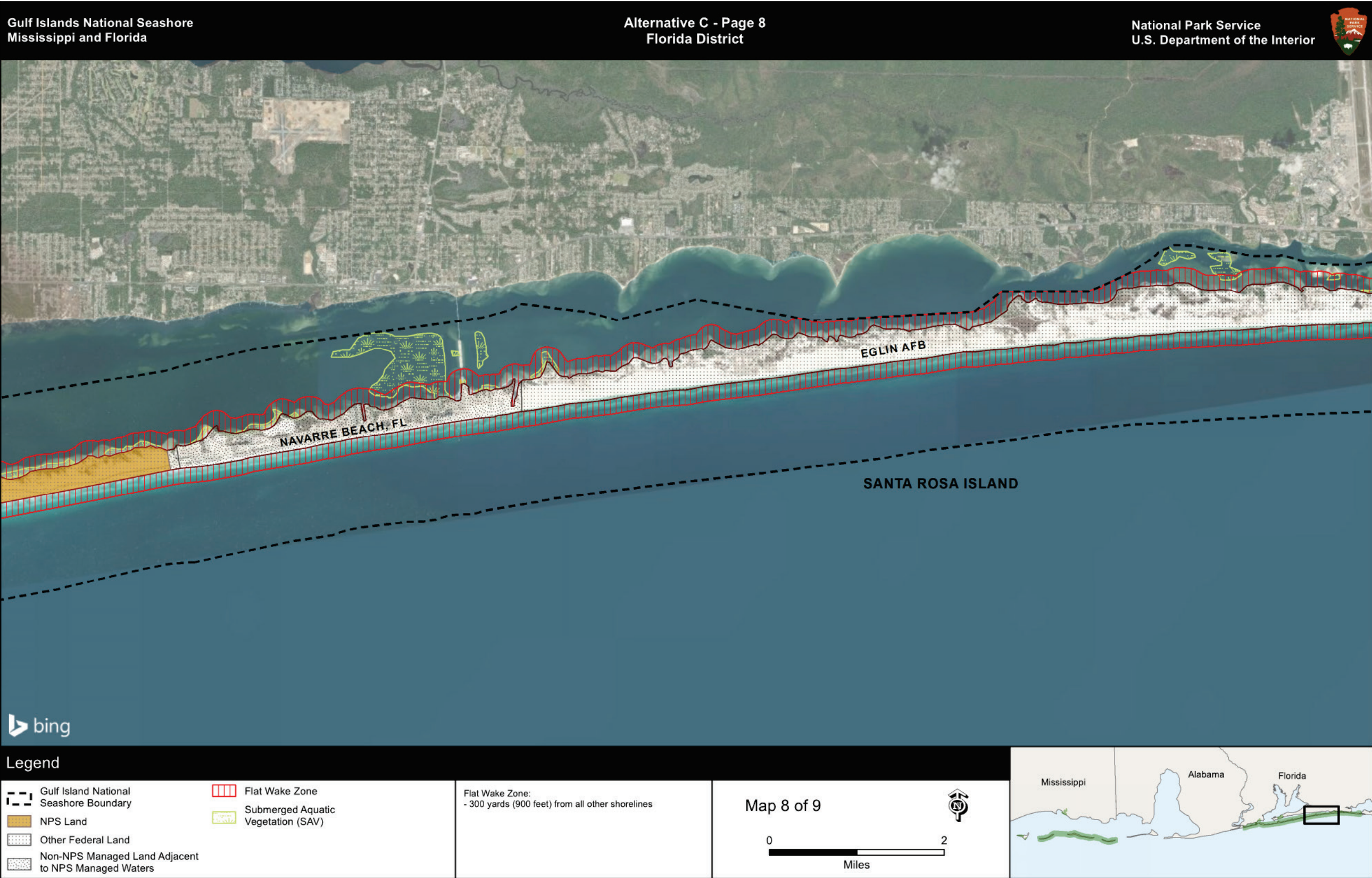
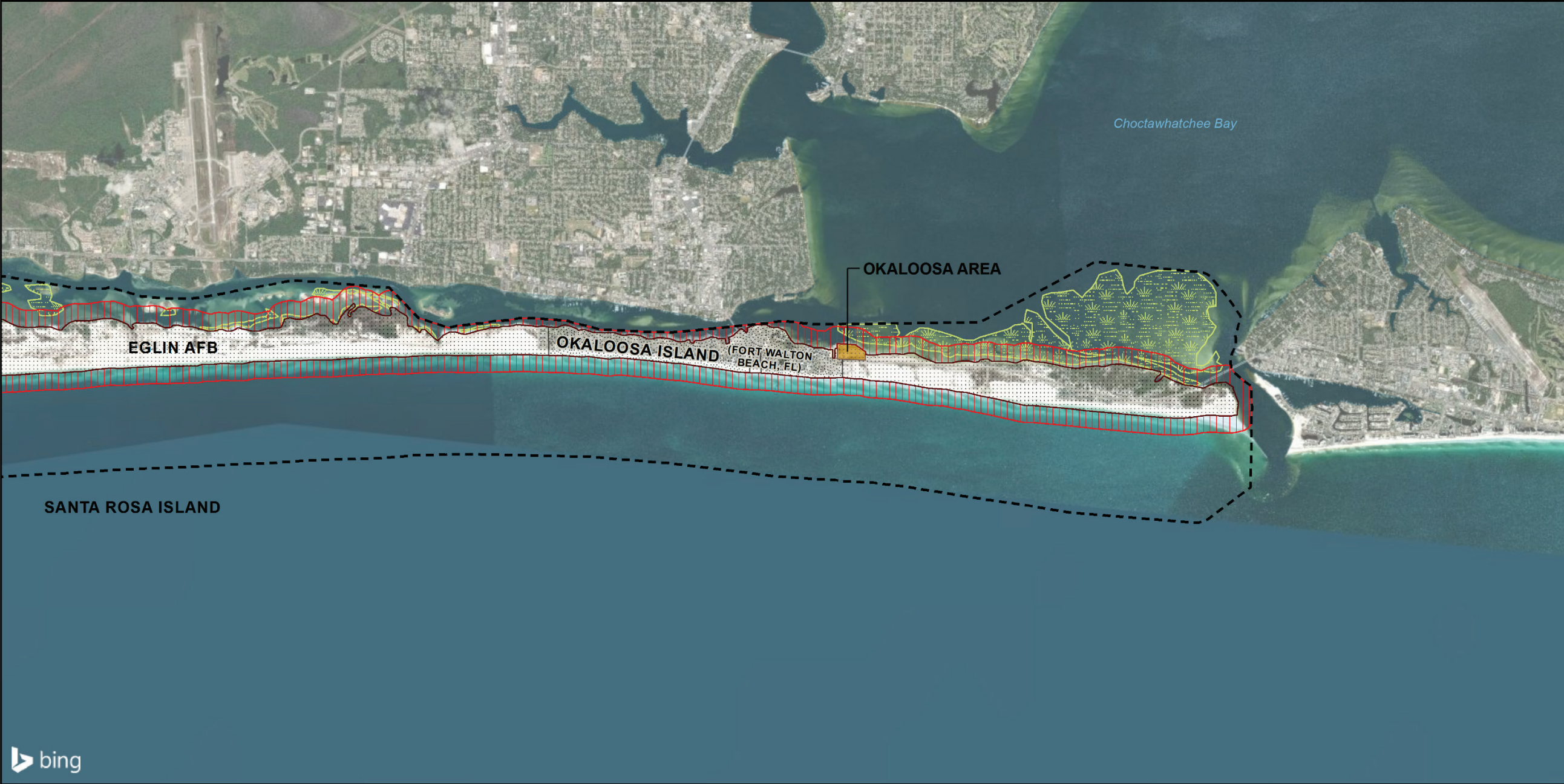


FIGURE D-18. ALTERNATIVE C (8) FLORIDA DISTRICT





Legend

- Gulf Island National Seashore Boundary
- NPS Land
- Other Federal Land
- Non-NPS Managed Land Adjacent to NPS Managed Waters

- Flat Wake Zone
- Submerged Aquatic Vegetation (SAV)

Flat Wake Zone:  
- 300 yards (900 feet) from all other shorelines

Map 9 of 9



FIGURE D-19. ALTERNATIVE C (9) FLORIDA DISTRICT