

FIGURE D-20. ALTERNATIVE D (1) MISSISSIPPI DISTRICT

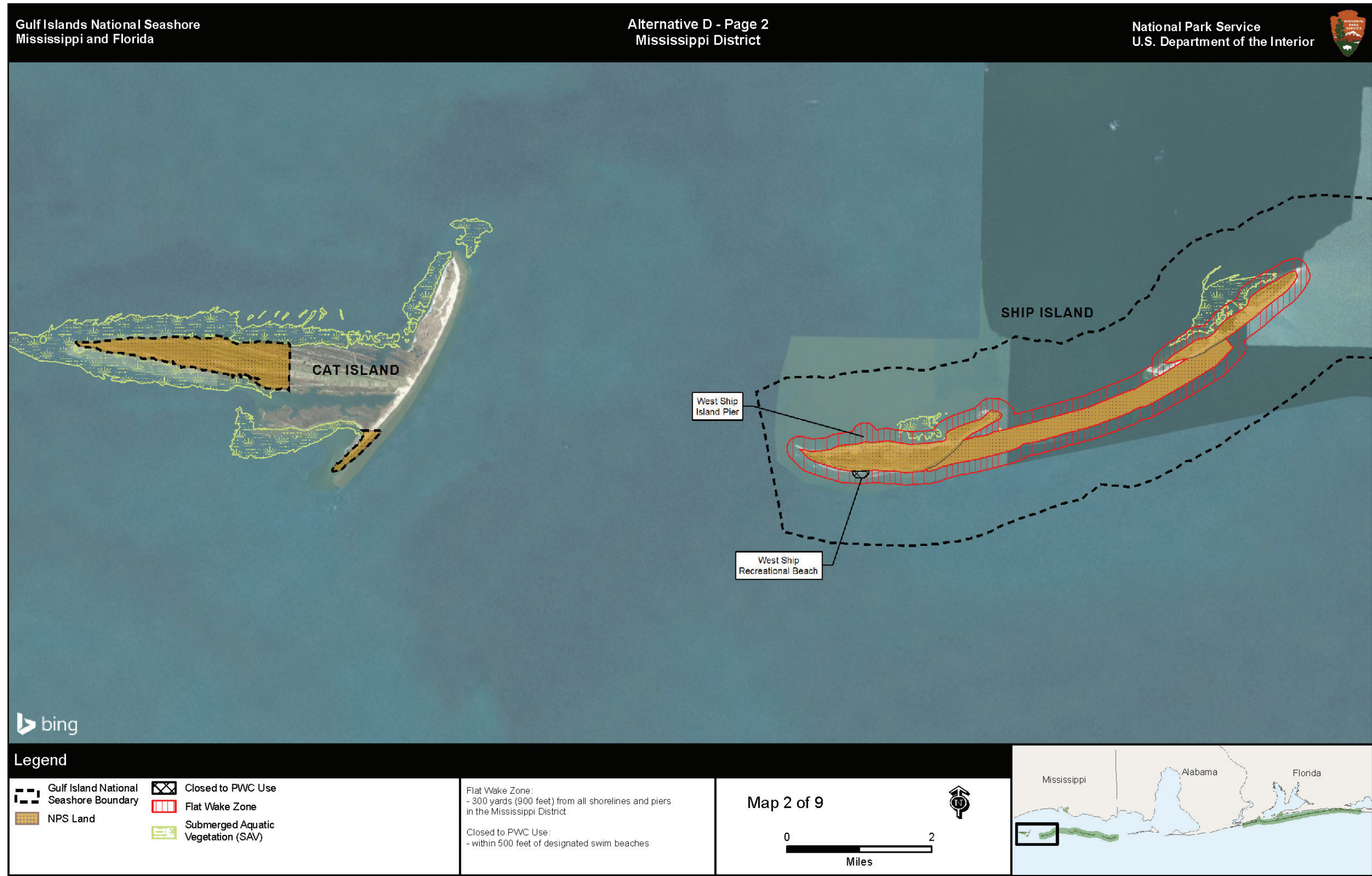


FIGURE D-21. ALTERNATIVE D (2) MISSISSIPPI DISTRICT

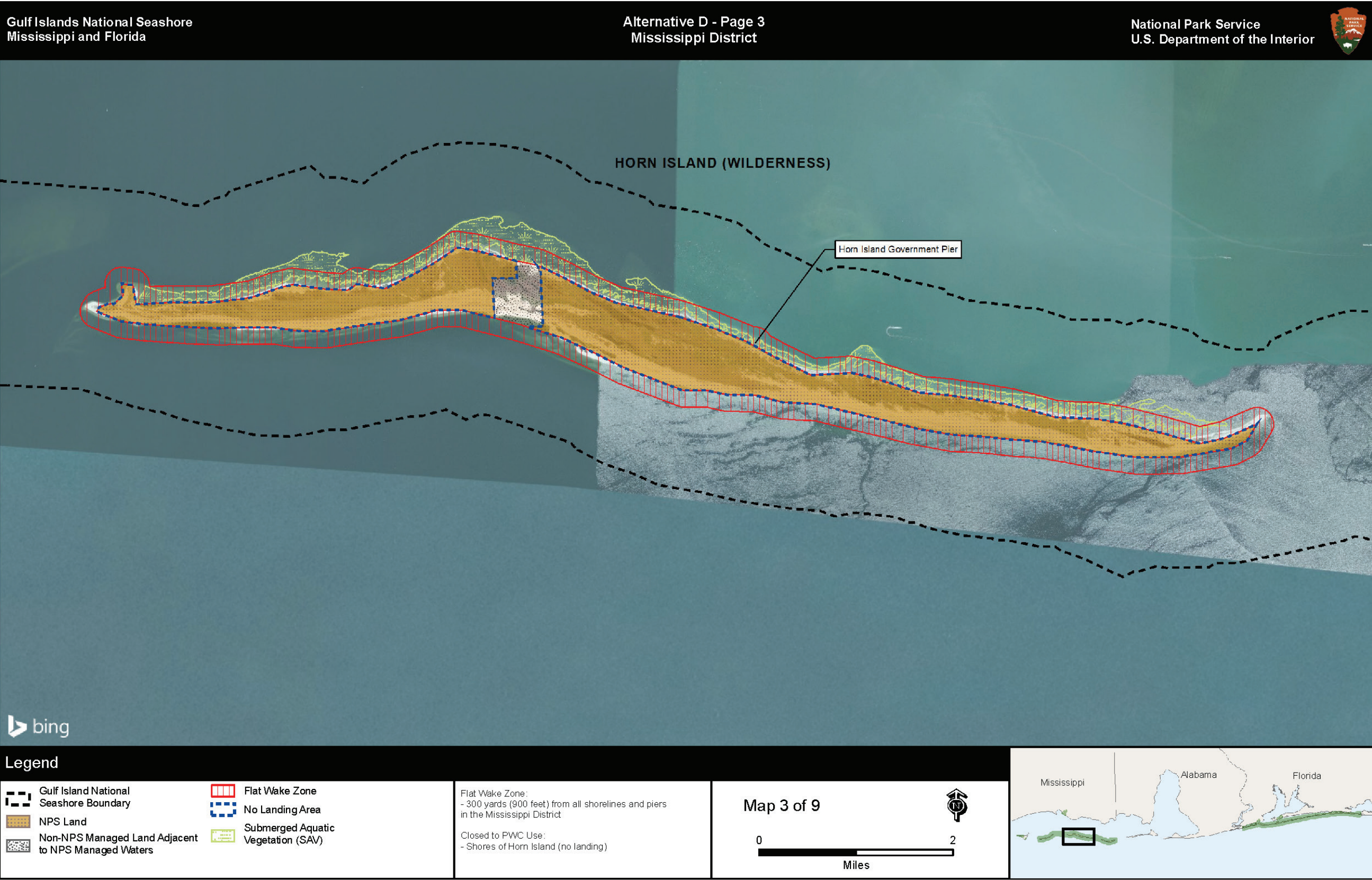


FIGURE D-22. ALTERNATIVE D (3) MISSISSIPPI DISTRICT

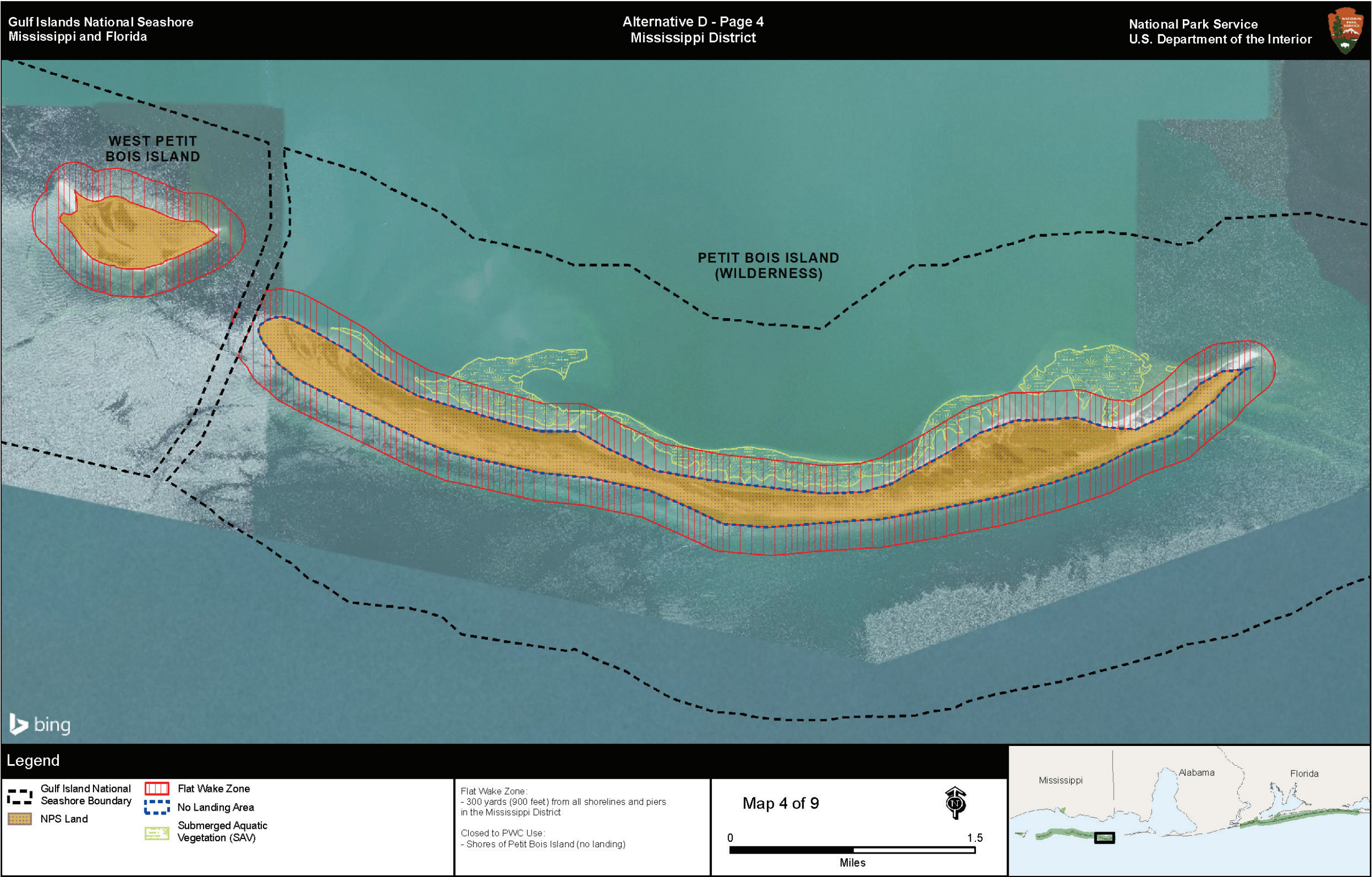


FIGURE D-23. ALTERNATIVE D (4) MISSISSIPPI DISTRICT

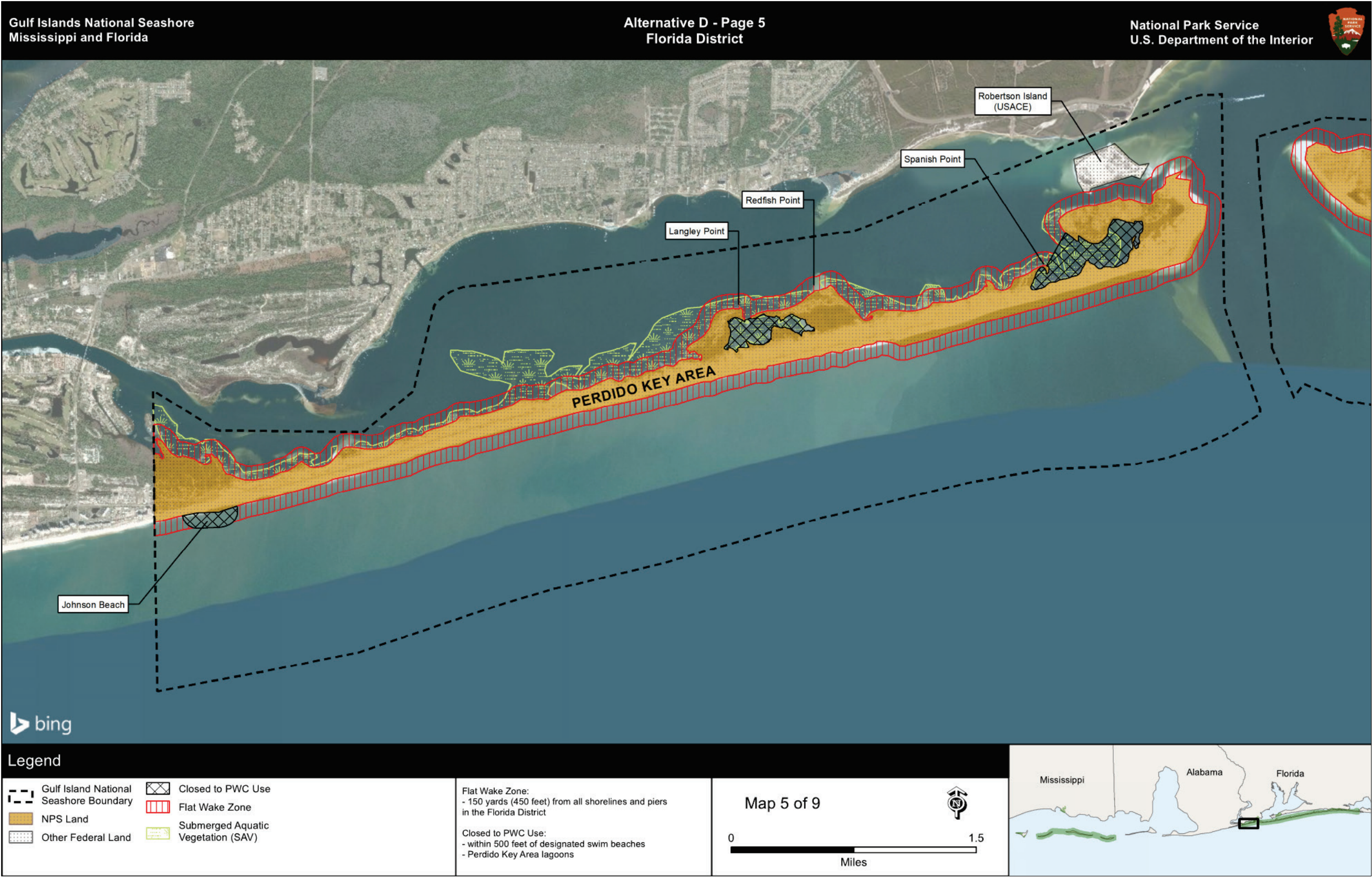


FIGURE D-24. ALTERNATIVE D (5) FLORIDA DISTRICT



bing

Legend

Gulf Island National Seashore Boundary	Closed to PWC Use
NPS Land	Flat Wake Zone
Other Federal Land	Submerged Aquatic Vegetation (SAV)
Non-NPS Managed Land Adjacent to NPS Managed Waters	

Flat Wake Zone:
- 150 yards (450 feet) from all shorelines and piers in the Florida District

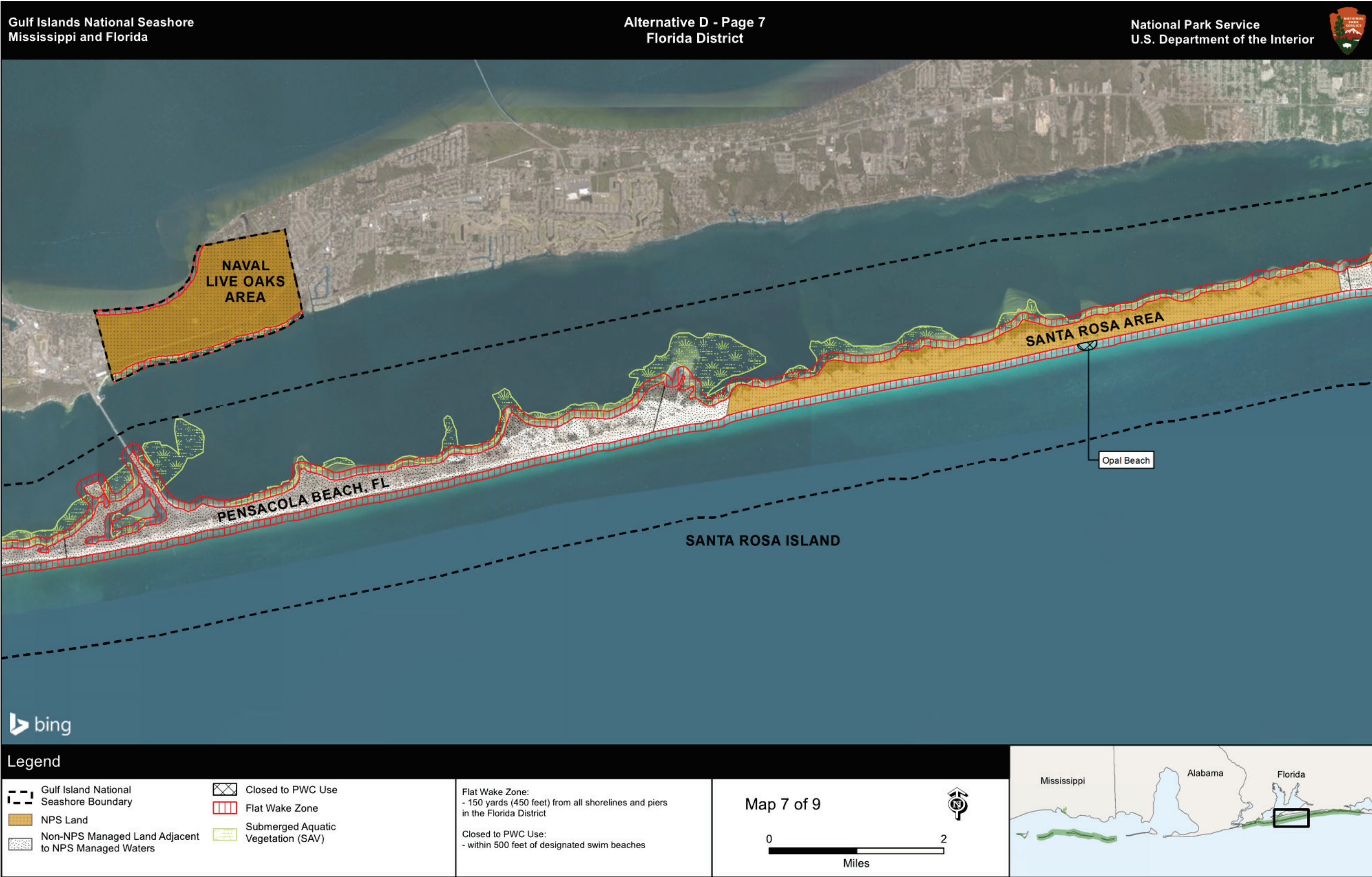
Closed to PWC Use:
- within 500 feet of designated swim beaches
- within 200 feet of Fort Pickens Area piers

Map 6 of 9

0 1.5
Miles

Mississippi Alabama Florida

FIGURE D-25. ALTERNATIVE D (6) FLORIDA DISTRICT



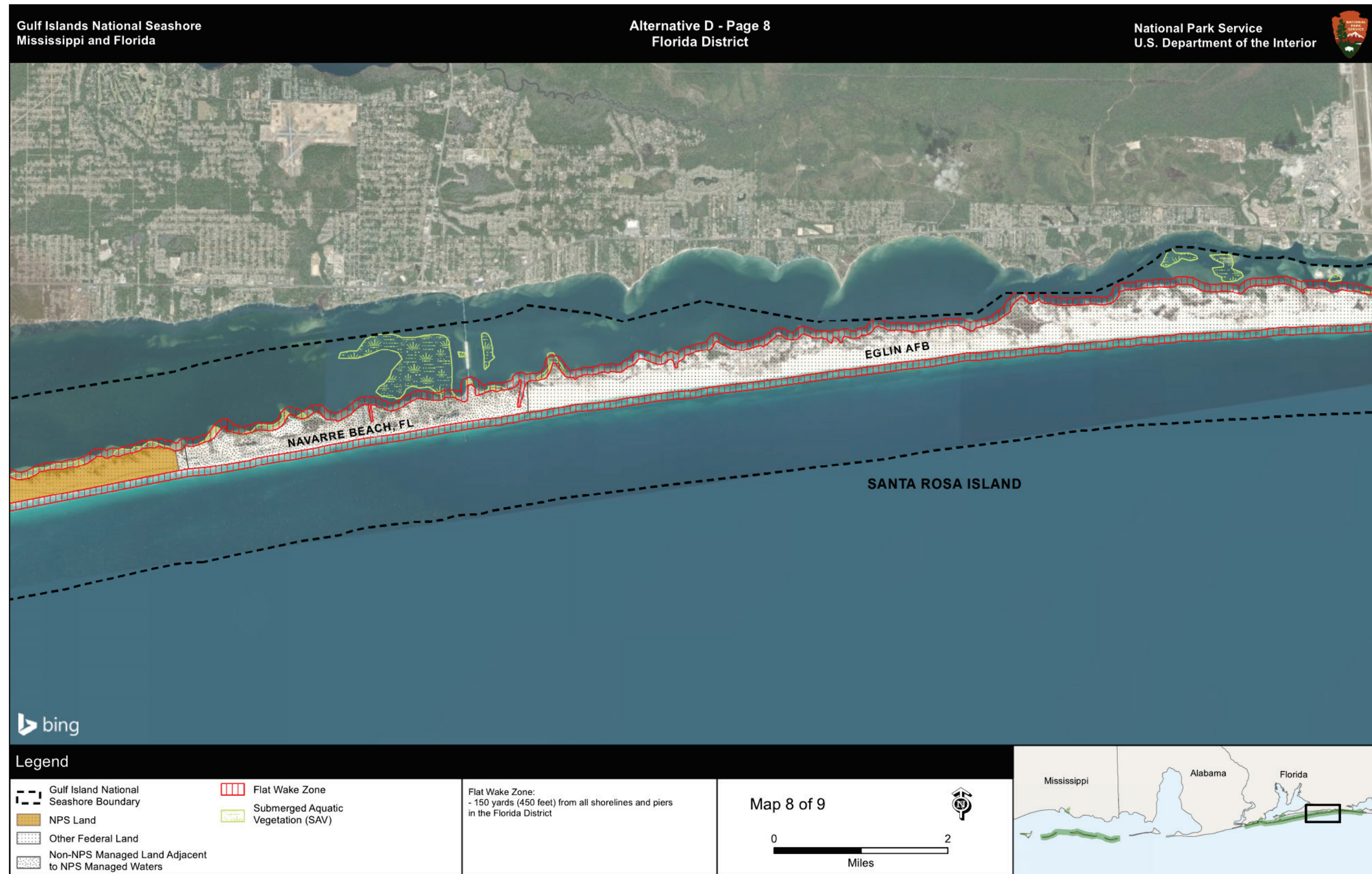


FIGURE D-27. ALTERNATIVE D (8) FLORIDA DISTRICT

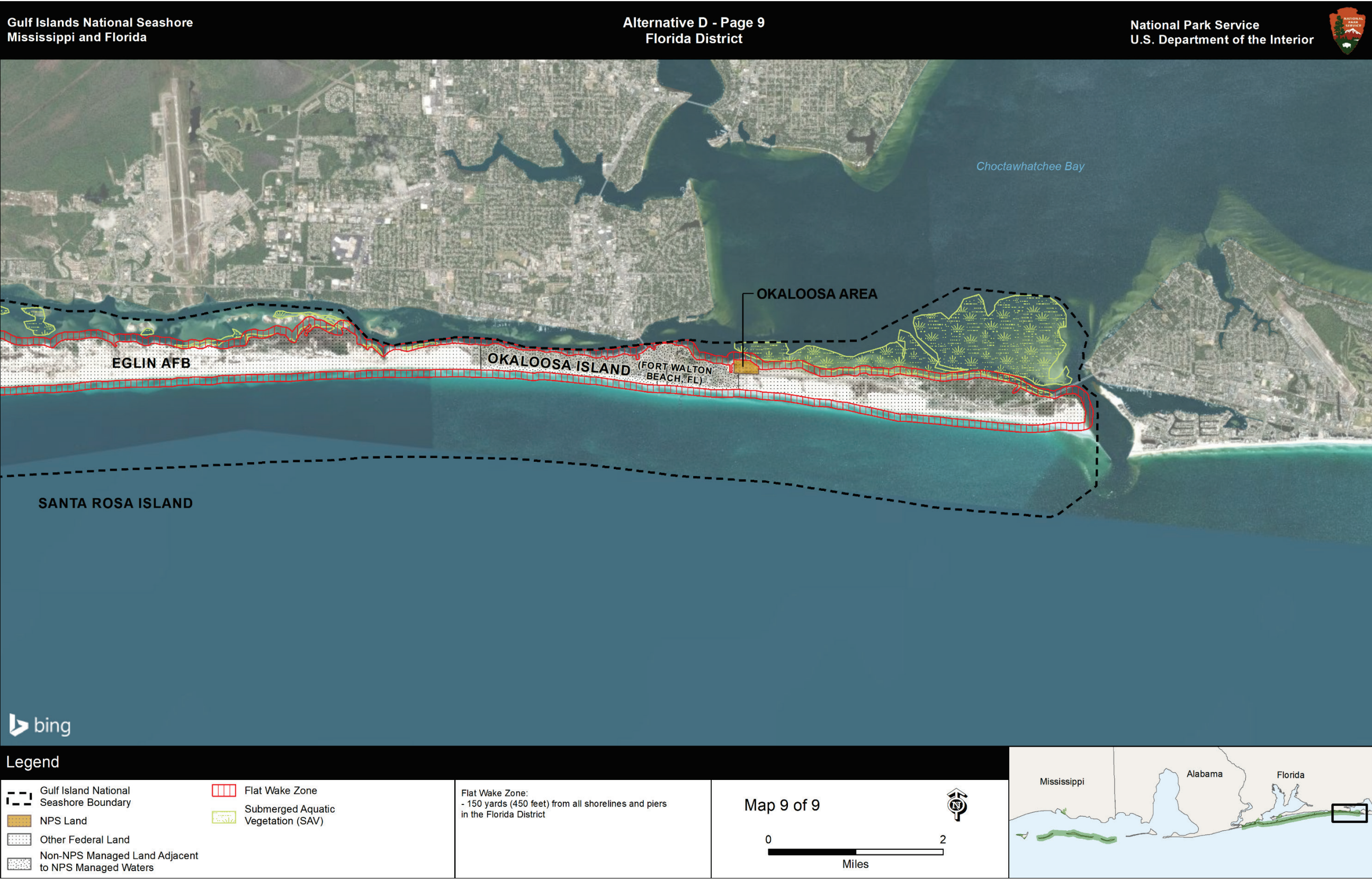


FIGURE D-28. ALTERNATIVE D (9) FLORIDA DISTRICT