



United States Department of the Interior



NATIONAL PARK SERVICE
National Mall and Memorial Parks
900 Ohio Drive, S.W.
Washington, D.C. 20024-2000

May 28, 2019

Mr. David Maloney
State Historic Preservation Officer
District of Columbia, Office of Planning
1100 4th Street SW, Suite 650 East
Washington, D.C. 20024

Subject: Section 106 Consultation for the U.S. Park Police H1 Stables Redevelopment

Dear Mr. Maloney:

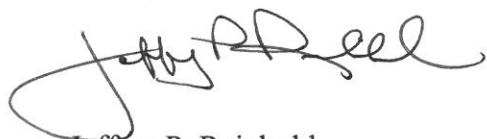
The National Park Service (NPS), under Section 106 of the National Historic Preservation Act (NHPA) of 1966, wishes to inform the District of Columbia State Historic Preservation Office of its intention to select Option 1- Symmetrical Building for the redevelopment of the U.S. Park Police H1 Stables on the National Mall. The NPS formally initiated consultation on February 19, 2019.

On April 15, 2019, the NPS held a consulting parties meeting to review site and building layout options for the proposed redevelopment of the United States Park Police (USPP) Stables on the National Mall., located on federal land in Ash Woods, between Independence Avenue and Ash Road, east of the Korean War Veterans Memorial and west of the DC War Memorial. At that time, the NPS presented four site and building layout options. Of those, the NPS plans to pursue Option 1- Symmetrical Building. This site and building layout includes a symmetrical building design; two public viewing paddocks facing Ash Road; a private paddock to the west of the building; and a medical paddock, parking, and vehicular access to Independence Avenue south of the proposed stables building.

At the meeting, the consulting parties considered the potential for adverse effects on resources within the Area of Potential Effect, including the DC War Memorial, the Martin Luther King Memorial, and East and West Potomac Parks Historic District. The group discussed the implications of the height and massing of the building, as well as the fencing, on historic resources. Consulting parties stated that they identified no potential adverse effect with Option 1- Symmetrical Building. If any significant changes develop that may cause adverse effects to any historic resources the NPS will notify you and the Consulting parties.

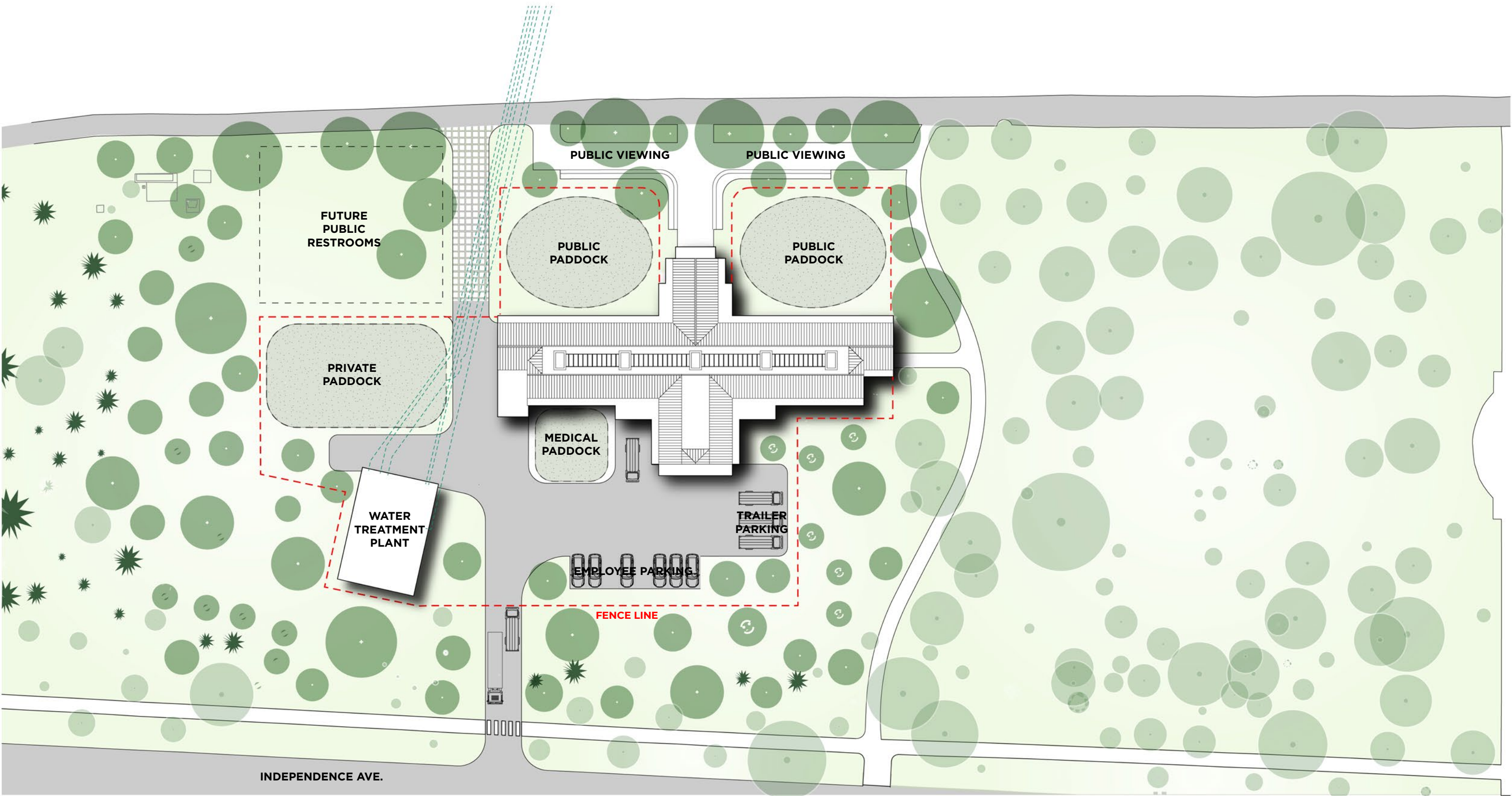
If you have any questions, please do not hesitate to contact Catherine Dewey, Chief of Resource Management for NAMA at 202-245-4711 or via email at catherine_dewey@nps.gov.

Sincerely,

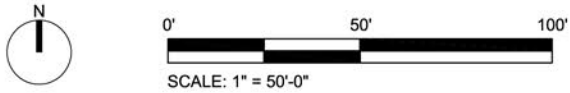
A handwritten signature in black ink, appearing to read "Jeffrey P. Reinbold". The signature is fluid and cursive, with a large loop at the beginning and a long, sweeping tail.

Jeffrey P. Reinbold
Acting Superintendent

Attachments



OPTION 1 - SYMMETRICAL BUILDING





DC WAR MEMORIAL



ASH WOODS

OPTION 1 - SYMMETRICAL BUILDING - SCALE COMPARISON



OPTION 1 - SYMMETRICAL BUILDING - ELEVATION FROM ASH ROAD



OPTION 1 - SYMMETRICAL BUILDING - ELEVATION FROM DC WAR MEMORIAL



OPTION 2 - ASYMMETRICAL BUILDING

