

APPENDIX A

PUBLIC AND AGENCY INVOLVEMENT

This page intentionally left blank.

SCOPING LETTER TO FLORIDA STATE HISTORIC PRESERVATION OFFICE



United States Department of Interior

NATIONAL PARK SERVICE
CASTILLO DE SAN MARCOS NATIONAL MONUMENT
1 South Castillo Drive
St. Augustine, FL 32084

REPLY REFER TO:
H4217

Via: Certified Mail, Return Receipt Requested

August 29, 2006

Mr. Frederick Gaske
Div of Historical Resources, Department of State
500 S. Bronough St., Room 305
Tallahassee, FL 32399-0250

Subject: Section 106 Consultation, Environmental Assessment for Rehabilitation of the 19th Century Seawall, Castillo de San Marcos National Monument, St. Augustine, Florida

Dear Mr. Gaske:

In accordance with the National Environmental Policy Act of 1969 (Public Law 91-190, as amended), the National Park Service is preparing an environmental assessment in conjunction with the proposed rehabilitation of the existing historic seawall located at Castillo de San Marcos National Monument in St. Augustine, Florida. Castillo de San Marcos National Monument is located on Matanzas Bay near the St. Augustine Inlet to the Atlantic Ocean (see location map). The National Monument is also located near the St. Augustine historic district.

Built between 1672 and 1695, Castillo de San Marcos served primarily as an outpost of the Spanish Empire. It guarded St. Augustine, the first permanent European settlement in the continental United States, and protected the sea route for treasure ships returning to Spain. During the 18th century, Castillo de San Marcos went from Spanish control to British and back to the Spanish, who remained in power in Florida until the area was purchased by the United States in 1821. In 1825 the War Department changed the name of Castillo de San Marcos to Fort Marion in honor of American Revolutionary War General Francis Marion. Confederate forces occupied Fort Marion between January of 1861 and March of 1862 when it was reoccupied by forces of the United States for the duration of the Civil War. Fort Marion was also used as a prison for members of the Seminole Indian tribe during the 1830s and the Apache, Cheyenne, Kiowa, Comanche, Caddo and Arapaho tribes during the 1870s and 1880s as western migration of settlers resulted in conflicts over land and resources and ultimately led to removal of the native peoples from their homelands by the United States Army.

The existing seawall that protects the fort from the tidal action in Matanzas Bay was constructed in 1842. The seawall is constructed from coquina and granite. The coquina portion of the seawall is failing and water that penetrates the seawall is eroding the soil on the landward side of the wall. This has resulted in the collapse of a sidewalk adjacent to the seawall at the park. Seawall failure will result in flooding conditions in the Castillo de San Marcos National Monument parking lot and downtown St. Augustine.

Mr. Frederick Gaske

August 29, 2006

Page 2

The purpose of this letter is to provide your office formal notice that the park is beginning development of an environmental assessment for rehabilitation of the 19th Century Seawall at Castillo de San Marcos National Monument. This document will be guided by the park's enabling legislation, planning documents, and environmental and historic preservation mandates.

This rehabilitation project is badly needed because the portion of the seawall in the southern portion of the Castillo de San Marcos National Monument site has shown signs of distress; e.g. the toe (bottom) of the wall has been displaced outward, decreasing its stability and viability. Although the portion of the seawall north of the fort does not show similar displacement, there are other areas of concern, including large cracks, erosion, and wash out from behind the wall.

This damage has been caused by a series of different events and conditions, some on-going. Over the years, the historic seawall has undergone numerous hurricanes, episodes of dredging and filling, and disturbance by construction and placement of utilities. High tides continue to wash into crevices in the wall, gradually eroding away both stone and historic mortar, as well as soil on the landward side of the seawall.

Rain water draining away from the fort saturates the soil behind the wall (on the landward side), increasing the soil moisture load and the outward pressure on the vertical wall as well as washing soil seaward through openings in the wall. The incoming tidal waters also penetrate the porous walls, and sluice small particles of soil downward and out through the wall, gradually loosening the wall mortar, stone, and fill behind the walls.

In two areas the seawall is failing and portions of the adjacent sidewalk are collapsing due to the erosion beneath. The southern section, shown as section A on Figure 1, is approximately 243 feet in length and located at the southernmost portion of the park. The northern section, shown as section B on Figure 1, is approximately 70 feet in length and is located near the northeast side of the fort. Seawall failure would result in flooding conditions in the fort parking lot and downtown St. Augustine.

Based on comprehensive engineering evaluations of the historic seawall (J2 Engineering Inc 2004), the seawall is marginally acceptable from a structural perspective unless a significant event such as a hurricane occurs. However, a pressure of 100 pounds per square foot (which is considered minimal) could result in failure of the seawall.

The seawall is included on the National Register, along with the fort and other historic features at the park. The park is considering several options to rehabilitate the historic seawall. The preferred alternative is to place riprap (large boulders) along sections A and B approximately halfway up the elevation of the seawall and level to a distance of approximately 10 feet seaward. The riprap would then slope 6:1 to ground level. A limestone based mortar would be used to fill cracks and voids in the existing coquina seawall. A second alternative would be to construct a new parallel seawall approximately 10 feet seaward of the existing historic seawall in section A. The seawall would be of modern construction and would be constructed at a height comparable to the city's seawall system. The void between the seawalls would be filled with soil and covered with a promenade.

Although we are just beginning to plan and gather information for the project, we believe that its eventual implementation may have the potential to affect properties included in or that may be eligible for inclusion in the National Register. Therefore, we are initiating consultation with your

Mr. Frederick Gaske

August 29, 2006

Page 3

office in accordance with 36 CFR 800 and with the 1995 Service-wide Programmatic Agreement among your office, the Advisory Council on Historic Preservation, and the National Park Service.

This letter also serves to notify your office that we plan to use the environmental assessment for the project to accomplish compliance for both Section 106 and the National Environmental Policy Act (as described in 36 CFR 800.8 (a-c)). As required by this regulation, a similar letter has been sent to the Advisory Council on Historic Preservation. The environmental assessment will provide detailed descriptions of alternative approaches intended to remedy the failing seawalls, and, as required by law, a no-action alternative. The environmental assessment also will analyze the potential impacts associated with possible implementation of each alternative and will describe the rationale for choosing the preferred alternative. These details will be reiterated in a Section 106 Summary in the environmental assessment. Also contained in the environmental assessment will be measures that would help avoid adverse effects on cultural resources.

Based on the project description (above), we would appreciate receiving your initial comments by October 2, 2006 so that the public draft of the environmental assessment would address your concerns. Of course, you will still have an opportunity to comment later on the public draft of the environmental assessment, but we would like to incorporate your input into the document at the earliest possible planning stage.

As soon as the environmental assessment is completed, we will send it to you for your review, comment, and concurrence that the Section 106 process has been completed. We look forward to your participation and input on the planning process. We believe that your ongoing participation will continue to result in better planning for cultural resources management, and will help ensure that cultural resources are adequately considered during preparation of the plan and the accompanying environmental assessment. Consultation and coordination with other governmental agencies and with interested publics also is underway.

Please send any comments you might have regarding the project to:

Gordon Wilson, Superintendent
Castillo de San Marcos National Monument
1 South Castillo Drive
St. Augustine, FL 32084

Phone: (904) 829-6506
E-mail: Gordon_Wilson@nps.gov

Thank you for your interest in this project.

Sincerely,

Gordon Wilson
Superintendent

Mr. Frederick Gaske

August 29, 2006

Page 4

Similar Letter sent to:

Mr. Don L. Klima

Director, Office of Federal Agency Programs

Advisory Council on Historic Preservation

Old Post Office Building

1100 Pennsylvania Avenue NW, Suite 809

Washington, DC 20004

c: NPS-SERO-Steven Wright
 Parsons-Tampa-J. Martin
 Parsons-Denver-D. Rhodes

This page intentionally left blank.

SAMPLE SCOPING LETTER TO OTHER AGENCIES



United States Department of Interior

NATIONAL PARK SERVICE
CASTILLO DE SAN MARCOS NATIONAL MONUMENT
1 South Castillo Drive
St. Augustine, FL 32084

REPLY REFER TO:
H4217

August 29, 2006

XXX
XXX
XXX
XXX
XXX

Dear Mr. XXX:

In accordance with the National Environmental Policy Act of 1969 (Public Law 91-190, as amended), the National Park Service is preparing an environmental assessment in conjunction with the proposed rehabilitation of the existing historic seawall located at Castillo de San Marcos National Monument in St. Augustine, Florida. Castillo de San Marcos is located on Matanzas Bay near the St. Augustine Inlet to the Atlantic Ocean (see location map). The National Monument is also located near the St. Augustine historic district.

Built between 1672 and 1695, Castillo de San Marcos served primarily as an outpost of the Spanish Empire. It guarded St. Augustine, the first permanent European settlement in the continental United States, and protected the sea route for treasure ships returning to Spain. During the 18th century, Castillo de San Marcos went from Spanish control to British and back to the Spanish, who remained in power in Florida until the area was purchased by the United States in 1821. In 1825 the War Department changed the name of Castillo de San Marcos to Fort Marion in honor of American Revolutionary War General Francis Marion. Confederate forces occupied Fort Marion between January of 1861 and March of 1862 when it was reoccupied by forces of the United States for the duration of the Civil War. Fort Marion was also used as a prison for members of the Seminole Indian tribe during the 1830s and the Apache, Cheyenne, Kiowa, Comanche, Caddo and Arapaho tribes during the 1870s and 1880s as western migration of settlers resulted in conflicts over land and resources and ultimately led to removal of the native peoples from their homelands by the United States Army.

The existing seawall that protects the fort from the tidal action in Matanzas Bay was constructed in 1842. The seawall is constructed from coquina and granite. The coquina portion of the seawall is failing and water that penetrates the seawall is eroding the soil on the landward side of the wall. This has resulted in the collapse of a sidewalk adjacent to the seawall at the park. Seawall failure will result in flooding conditions in the Castillo de San Marcos parking lot and downtown St. Augustine.

The environmental assessment is being prepared to evaluate the potential effects of the rehabilitation of the historic seawall. We request your comments regarding any issues that you might have regarding the proposed project.

Mr. XXX

August 29, 2006

Page 2

Please send any comments you might have regarding the project to:

Gordon Wilson, Superintendent
Castillo de San Marcos National Monument
1 South Castillo Drive
St. Augustine, FL 32084

Phone: (904) 829-6506

E-mail: Gordon_Wilson@nps.gov

Thank you for your interest in this project.

Sincerely,

Gordon Wilson
Superintendent

This page intentionally left blank.

SAMPLE SCOPING LETTER TO TRIBES



United States Department of Interior

NATIONAL PARK SERVICE
CASTILLO DE SAN MARCOS NATIONAL MONUMENT
1 South Castillo Drive
St. Augustine, FL 32084

REPLY REFER TO:
H4217

August 29, 2006

XXX
XXX
XXX
XXX
XXX

Subject: Government-to-Government Consultation, Project to Rehabilitate the Historic Seawall at Castillo de San Marcos National Monument, St. Augustine, Florida

Dear Mr. XXX:

In accordance with the National Environmental Policy Act of 1969 (Public Law 91-190, as amended), the National Park Service is preparing an environmental assessment in conjunction with the proposed rehabilitation of the existing historic seawall located at Castillo de San Marcos National Monument in St. Augustine, Florida. Castillo de San Marcos is located on Matanzas Bay near the St. Augustine Inlet to the Atlantic Ocean (see location map). The National Monument is also located near the St. Augustine historic district.

Built between 1672 and 1695, Castillo de San Marcos served primarily as an outpost of the Spanish Empire. It guarded St. Augustine, the first permanent European settlement in the continental United States, and protected the sea route for treasure ships returning to Spain. During the 18th century, Castillo de San Marcos went from Spanish control to British and back to the Spanish, who remained in power in Florida until the area was purchased by the United States in 1821. In 1825 the War Department changed the name of Castillo de San Marcos to Fort Marion in honor of American Revolutionary War General Francis Marion. Confederate forces occupied Fort Marion between January of 1861 and March of 1862 when it was reoccupied by forces of the United States for the duration of the Civil War. Fort Marion was also used as a prison for members of the Seminole Indian tribe during the 1830s and the Apache, Cheyenne, Kiowa, Comanche, Caddo and Arapaho tribes during the 1870s and 1880s as western migration of settlers resulted in conflicts over land and resources and ultimately led to removal of the native peoples from their homelands by the United States Army.

The existing seawall that protects the fort from the tidal action in Matanzas Bay was constructed in 1842. The seawall is constructed from coquina and granite. The coquina portion of the seawall is failing and water that penetrates the seawall is eroding the soil on the landward side of the wall. This has resulted in the collapse of a sidewalk adjacent to the seawall at the park. Seawall failure will result in flooding conditions in the Castillo de San Marcos parking lot and downtown St. Augustine.

The park is aware that American Indians value both natural and cultural resources and we want to ensure that the project will meet mutually held tribal and National Park Service goals for management of important resources in and near the park. We also want to be sure that the project will not affect ethnographic resources valued by your tribe. Therefore, this letter is to formally initiate Government-to-Government consultation with your office in accordance with legislation, Executive Orders, regulations, and policy, including sections 101 and 106 of the National Historic Preservation Act of 1966 as amended, 36 CFR 800, National Park Service *Management Policies* and Director's Order 28, *Cultural Resources Management* (especially Chapter 10, Ethnographic Resources).

We have begun the planning process required by Section 106 of the National Historic Preservation Act. The Environmental Assessment will study and assess the impacts to natural and cultural resources, including ethnographic resources. We plan to use the environmental assessment to accomplish compliance for both Section 106 and the National Environmental Policy Act (as described in 36 CFR 800.8 (a-c)).

The environmental assessment will provide detailed descriptions of alternative designs intended to meet the project objectives and, as required by law, a no-action alternative. The environmental assessment will describe the rationale for choosing the preferred alternative and include a full description of mitigation measures that would help avoid adverse effects on historic and cultural resources. The draft environmental assessment will include any required mitigation, and will be forwarded to you for your review and comment as soon as it is completed.

We believe that your participation will result in better planning for resource management, and will help ensure that cultural and natural resources valued by your tribe are adequately considered during the planning and compliance process. We look forward to receiving your input and any concerns you have about the project. Should you have any questions or desire additional information, we would be pleased to discuss this project further, either by telephone or in a meeting. Thank you for your interest in this project.

Please send any comments you might have regarding the project to:

Gordon Wilson, Superintendent
Castillo de San Marcos National Monument
1 South Castillo Drive
St. Augustine, FL 32084

Phone: (904) 829-6506
E-mail: Gordon_Wilson@nps.gov

Sincerely,

Gordon Wilson
Superintendent

This page intentionally left blank.

ATTACHMENTS TO SCOPING LETTERS

The City of St. Augustine



0 1,000 2,000 Feet

**Castillo de San Marcos
National Monument
Location Map**

C:\PROJECTS\CastilloDeSanMarco\Drawing1.dwg DATE: 07/24/2006 TIME: 10:05:46AM



Source: J2 Engineering, Inc., 2006

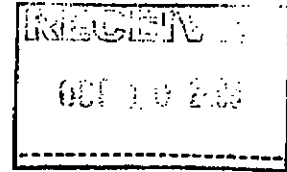


CONTRACT NUMBER: -	PROJECT: Survey Of Wall, Castillo De San Marcos
PROJECT NUMBER: -	
DATE: July 2006	CLIENT: National Park Service

Figure No. 1
TITLE: Seawall Sections to be Rehabilitated

This page intentionally left blank.

AGENCY AND TRIBAL COMMENT TO SCOPING LETTER



FLORIDA DEPARTMENT OF STATE
Sue M. Cobb
Secretary of State
DIVISION OF HISTORICAL RESOURCES

Mr. Gordon Wilson
National Park Service
Castillo De Marcos National Monument
1 South Castillo Drive
St. Augustine, FL 32084

October 4, 2006

RE: DHR Project File Number: 2006-8201
Received by DHR: September 6, 2006
National Park Service/Castillo De Marcos National Monument
Section 106 Consultation, Environmental Assessment for Rehabilitation of Over 300 Feet
of the 19th Century Seawall, Matanzas Bay Frontage, Castillo de San Marcos National
Monument
St. Augustine, St. Johns County

Dear Mr. Wilson:

This office received and reviewed the information for the above referenced project in accordance with Section 106 of the *National Historic Preservation Act of 1966*, as amended and *36 CFR Part 800: Protection of Historic Properties* and the *National Environmental Policy Act of 1969*, as amended. The State Historic Preservation Officer is to advise Federal agencies as they identify historic properties (listed or eligible for listing in the *National Register of Historic Places*), assess effects upon them, and consider alternatives to avoid or minimize adverse effects.

Since architect David Ferro visited the site to inspect the seawall last year, it is clear that some action is needed to prevent further deterioration and eventual collapse of this significant feature. Therefore, Alternative A, the "No Action" alternative, would predictably have an eventual adverse effect on the historic integrity of the seawall and possibly other features of the site.

Alternative B, involving the placement of stone riprap along the length of the seawall is considered the most appropriate of the three alternatives described; however, there is no mention of repair/restoration of the historic seawall as part of this alternative. Is such work intended as part of this alternative?

Alternative C would result in the construction of a contemporary concrete seawall beyond the existing structure, infill of the space between them and construction of a promenade between the

500 S. Bronough Street • Tallahassee, FL 32399-0250 • <http://www.flheritage.com>

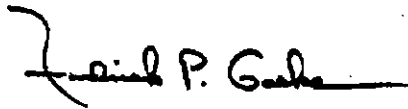
<input type="checkbox"/> Director's Office (850) 245-6300 • FAX: 245-6436	<input type="checkbox"/> Archaeological Research (850) 245-6444 • FAX: 245-6452	<input checked="" type="checkbox"/> Historic Preservation (850) 245-6333 • FAX: 245-6437	<input type="checkbox"/> Historical Museums (850) 245-6400 • FAX: 245-6433
<input type="checkbox"/> Southeast Regional Office (954) 467-4990 • FAX: 467-4991	<input type="checkbox"/> Northeast Regional Office (904) 825-5045 • FAX: 825-5044	<input type="checkbox"/> Central Florida Regional Office (813) 272-3843 • FAX: 272-2340	

Mr. Wilson
October 4, 2006
Page 2

two walls - with the historic seawall being used as a sitting wall. The significant adverse effects of this alternative would be physical (on the seawall), as well as contextual (on the Castillo). We strongly discourage further consideration of this alternative.

If you have any questions, please contact David Ferro, Preservation Architect, or James Toner, Historic Sites Specialist, at 850-245-6333.

Sincerely,

A handwritten signature in black ink, appearing to read "Frederick P. Gaske", with a long horizontal flourish extending to the right.

Frederick P. Gaske, Director, and
State Historic Preservation Officer



"Kelly Yasaitis Fanizzo"
<kfanizzo@achp.gov>
09/11/2006 11:22 AM
AST

To: <gordon_wilson@nps.gov>
cc: "Reid Nelson" <nelson@achp.gov>
Subject:

Hi Gordon,

Thanks again for taking the time to speak with me this morning. As discussed, we are in receipt of your notification of intent to follow 36 CFR 800.8(c) to meet section 106 obligations for the proposed rehabilitation of the 19th century seawall at Castillo de San Marcos National Monument, St. Augustine, FL.

We have no preliminary comments at this point, however, we do recommend you continue consultation with the Florida State Historic Preservation Office and any tribes and/or other consulting parties on all potential impacts that may occur to historic properties.

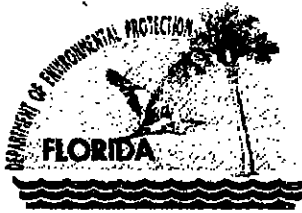
If you have any questions, please do not hesitate to give me a call.

Thanks,
Kelly Yasaitis Fanizzo

Kelly Yasaitis Fanizzo, JD
Historic Preservation Specialist
Office of Federal Agency Programs
Advisory Council on Historic Preservation
1100 Pennsylvania Avenue, NW, Suite 809
Washington, DC 20004

PLEASE NOTE NEW EMAIL ADDRESS- kfanizzo@achp.gov.

Phone (202) 606-8583
Fax (202) 606-5072



Jeb Bush
Governor

Department of Environmental Protection

Marjory Stoneman Douglas Building
3900 Commonwealth Boulevard
Tallahassee, Florida 32399-3000

Colleen M. Castille
Secretary

October 19, 2006

Mr. Gordon Wilson, Superintendent
Castillo de San Marcos National Monument
1 South Castillo Drive
St. Augustine, FL 32084

RE: National Park Service – Scoping Notice – Environmental Assessment for
Rehabilitation of the 19th Century Seawall, Castillo de San Marcos National
Monument – St. Augustine, St. Johns County, Florida.

SAI # FL200609052775C

Dear Mr. Wilson:

The Florida State Clearinghouse, pursuant to Presidential Executive Order 12372, Gubernatorial Executive Order 95-359, the Coastal Zone Management Act, 16 U.S.C. §§ 1451-1464, as amended, and the National Environmental Policy Act, 42 U.S.C. §§ 4321, 4331-4335, 4341-4347, as amended, has coordinated a review of the referenced project.

The St. Johns River Water Management District (SJRWMD) states that the proposed project will require an Environmental Resource Permit (ERP) from the SJRWMD. The applicant is advised to contact Mr. David Miracle, Service Center Director, in the Jacksonville Service Center at (904) 730-6270 or dmiralce@sjrwmd.com for further assistance or to schedule a pre-application meeting.

The Florida Department of Environmental Protection (DEP) notes that placement of riprap in front of the existing seawall (Alternative B) would require a Noticed General ERP under Section 62-341.437, *Florida Administrative Code*, while construction of a new bulkhead waterward of the existing seawall (Alternative C) may require a Standard General ERP and mitigation for loss of nearshore habitat. For additional information, please contact Mr. Mike Eaton at the DEP Northeast District Office in Jacksonville at (904) 807-3328.

Based on the information contained in the public notice and the enclosed state agency comments, state has determined that, at this stage, the proposed federal activities are consistent with the Florida Coastal Management Program (FCMP). The federal agency must, however, address the concerns identified by our reviewing agencies prior to project implementation. The state's continued concurrence with the project will be based, in part, on the adequate resolution

"More Protection, Less Process"

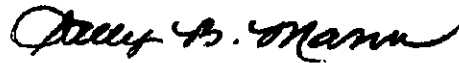
Printed on recycled paper.

Mr. Gordon Wilson
October 19, 2006
Page 2 of 2

of issues identified during this and subsequent reviews. The state's final concurrence of the project's consistency with the FCMP will be determined during the environmental permitting stage.

Thank you for the opportunity to review the proposed project. Should you have any questions regarding this letter, please contact Ms. Suzanne E. Ray at (850) 245-2172.

Sincerely,



Sally B. Mann, Director
Office of Intergovernmental Programs

SBM/ser
Enclosures

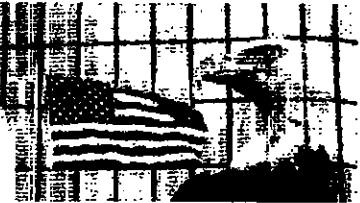
cc: Geoffrey Sample, SJRWMD
Jennifer Auger, DEP, Northeast District



Florida

Department of Environmental Protection

"More Protection. Less Process"



[DEP Home](#) | [OIP Home](#) | [Contact DEP](#) | [Search](#) | [DEP Site Map](#)

Project Information	
Project:	FL200609052775C
Comments Due:	10/06/2006
Letter Due:	10/20/2006
Description:	NATIONAL PARK SERVICE - SCOPING NOTICE - ENVIRONMENTAL ASSESSMENT FOR REHABILITATION OF THE 19TH CENTURY SEAWALL, CASTILLO DE SAN MARCOS NATIONAL MONUMENT - ST. AUGUSTINE, ST. JOHNS COUNTY, FLORIDA.
Keywords:	NPS - CASTILLO DE SAN MARCOS NATIONAL MONUMENT SEAWALL REHAB. - ST. JOHNS CO.
CFDA #:	15.912
Agency Comments:	
NE FLORIDA RPC - NORTHEAST FLORIDA REGIONAL PLANNING COUNCIL	
No Comment	
FISH and WILDLIFE COMMISSION - FLORIDA FISH AND WILDLIFE CONSERVATION COMMISSION	
No Comments Received	
STATE - FLORIDA DEPARTMENT OF STATE	
No Comments Received	
ENVIRONMENTAL PROTECTION - FLORIDA DEPARTMENT OF ENVIRONMENTAL PROTECTION	
The DEP notes that placement of riprap in front of the existing seawall (Alternative B) may require a Noticed General ERP, while construction of a new bulkhead waterward of the existing seawall (Alternative C) may require a Standard General ERP and mitigation for loss of nearshore habitat. For additional information, please contact Mr. Mike Eaton at the DEP Northeast District Office in Jacksonville at (904) 807-3328.	
ST. JOHNS RIVER WMD - ST. JOHNS RIVER WATER MANAGEMENT DISTRICT	
The project will require an Environmental Resource Permit from SJRWMD. Please contact Mr. David Mirade, Service Center Director, in the Jacksonville Service Center at (904) 730-6270 or dmirade@sjrwmd.com for further assistance or to schedule a pre-application meeting.	

For more information please contact the Clearinghouse Office at:

3900 COMMONWEALTH BOULEVARD MS-47
TALLAHASSEE, FLORIDA 32399-3000
TELEPHONE: (850) 245-2161
FAX: (850) 245-2190

Visit the [Clearinghouse Home Page](#) to query other projects.

[Copyright and Disclaimer](#)
[Privacy Statement](#)

SAI# FL200609052775C

National Park Service - Scoping Notice - Environmental
Assessment for Rehabilitation of the 19th Century Seawall,
Castillo de San Marcos National Monument - St. Augustine,
St. Johns County, Florida.

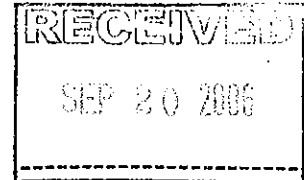
The above-referenced project was received by the Florida State Clearinghouse on 9/5/06, and has been forwarded to the appropriate reviewing agencies. The clearance letter and agency comments will be forwarded to you no later than 10/20/06, unless you are otherwise notified. Please refer to the State Application Identifier (SAI) number in all written correspondence with the Florida State Clearinghouse regarding this project. If you have any questions, please contact the Clearinghouse staff at (850) 245-2161.



DEPARTMENT OF THE ARMY
JACKSONVILLE DISTRICT CORPS OF ENGINEERS
P. O. BOX 4970
JACKSONVILLE, FLORIDA 32232-0019

REPLY TO
ATTENTION OF

September 18, 2006



Regulatory Division
North Permits Branch
Atlantic Permits Section

Mr. Gordon Wilson
Castillo de San Marcos National Monument
1 South Castillo Drive
St. Augustine, Florida 32084

Dear Mr. Wilson:

Reference is made to your letter, dated August 29, 2006, regarding potential work associated with the rehabilitation of the historic seawall adjacent to the Castillo de San Marcos.

Within the last year, the U.S. Army Corps of Engineers (Corps) evaluated work associated with the rehabilitation of the historic seawall south of the Bridge of Lions, near the armory. That project generated concerns pertinent to the potential impact on the historic seawall, potential impacts to emergent aquatic vegetation, and oyster beds. The State of Florida, Department of State, Division of Historic Resources, State Historic Preservation Officer (SHPO) and the National Marine Fisheries Service (NMFS) submitted correspondence conveying their concerns during the Department of the Army public notice for that project.

The Corps believes similar concerns would be generated by any potential work associated with the rehabilitation of the seawall near the Castillo de San Marcos. Therefore, we request that any plans to conduct work in association with the rehabilitation of the referenced section of seawall carefully consider any potential impacts to the historic resource (the seawall) and the contiguous aquatic resources (the tidal flats).

Any work at the site affecting navigable waters of the United States will require a Department of the Army permit in accordance with Section 10 of the Rivers and Harbors Act of 1899. Furthermore, any work at the site involving the discharge of dredged or fill material into waters of the United States will require a Department of the Army permit in accordance with Section 404 of the Clean Water Act.

The Corps is willing to work cooperatively with your agency to proactively address regulatory and environmental issues. If you have any questions, or wish to solicit any additional assistance, please contact Mr. Mark R. Evans at the letterhead address or by telephone at 904-232-2028.

Sincerely,

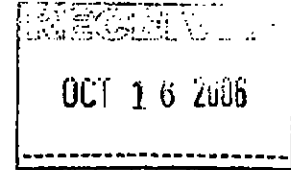
A handwritten signature in dark ink, appearing to read 'Osvaldo Collazo', is written over the typed name.

Osvaldo Collazo
Chief, North Permits Branch



COMANCHE TRIBE

NAGPRA



October 9, 2006

Gordon Wilson, Superintendent
Castillo de San Marcos National Monument
1 South Castillo Drive
St Augustin, FL 32084

Re: Preparation of environmental assessment in conjunction with the proposed rehabilitation of the existing historic seawall located at Castillo de San Marcos National Monument in St. Augustin, Florida

Dear Mr. Wilson:

Thank you for your letter of August 29th regarding the proposed rehabilitation of the existing historic seawall as referenced above.

At this time, the Comanche Nation has no immediate concerns or issues regarding this project; however, please keep us informed as your planning proceeds. We look forward to receiving any project reports, archaeological reports or other information that is derived from the planning, preparation, and construction work.

If in the process of the project human remains or archaeological items are discovered, we request that you immediately cease the project work and notify us so that we may discuss appropriate disposition with you and the other Tribal Nations that may be affected by such discoveries.

We look forward to your reports as activities proceed.

Sincerely,

Ruth Toahy, NAGPRA Associate

P.O. Box 908 • Lawton, Oklahoma 73502 • (580) 492-3754 • (580) 492-3733 FAX



"Robert Cast"
<hpd@netride.net>
10/27/2006 01:11 PM
EST

To: "Gordon Wilson" <Gordon_Wilson@nps.gov>
cc:
Subject: Castillo de San Marcos National Monument

Dear Mr. Wilson:

My name is Robert Cast and I am the THPO for the Caddo Nation. Your letter requesting consultation regarding the project to Rehabilitate the Historic Seawall at Castillo de San Marcos National Monument was forwarded to my office by Chairwoman LaRue Parker. I have sent out a letter requesting any information on the Caddo people that you mention being held prisoner there in the 1870s and 1880s. Although we would probably not have many concerns about the seawall, this place may hold significance to the Caddo depending upon what information you can provide to us. Thank you for any information in advance. Have a good weekend.

Robert Cast
THPO, Caddo Nation
P. O. Box 487
Binger, OK 73009
Ph: 405-656-2901
fax: 405-656-2386

www.caddonation-nsn.gov

"The ideals which have lighted my way, and time after time have given me new courage to face life cheerfully, have been Kindness, Beauty, and Truth" Albert Einstein



THE JICARILLA APACHE NATION

P.O. BOX 507 • DULCE, NEW MEXICO • 87528-0507

October 16, 2006

Jicarilla Apache
Traditional
Culture
Committee

Wainwright Velarde
President

Raymond Tafoya, Sr.
Vice President

Dr. Wilhelmina Phone
Secretary

Bryan F. Vigil
Treasurer

*"dedicated to the
preservation
and
perpetuation
of the
Jicarilla Apache
culture
and
traditions"*

Gordon Wilson, Superintendent
Castillo de San Marcos National Monument
1 South Castillo Drive
St. Augustine, FL 32084

RE: Project to Rehabilitate the Historic Seawall at
Castillo de San Marcos National Monument
St. Augustine, Florida

Dear Ms. McGraw,

Your letter of August 9, 2006 was referred to my office. The Jicarilla Apache Nation appreciates you contacting us regarding the above referenced project.

We are deferring any decisions regarding the project to the surrounding tribes and support their concerns. Please feel free to call me if you have any questions, 505-759-1343.

Sincerely,

Lorene Willis, Director
Jicarilla Apache Cultural Affairs

Cc: President Levi Pesata



This page intentionally left blank.

PUBLIC COMMENT - PROJECT SCOPING



United States Department of the Interior

NATIONAL PARK SERVICE
Attention: Gordon Wilson, Superintendent
Castillo de San Marcos National Monument
1 South Castillo Drive
St. Augustine, FL 32084-3252
904-829-6506
<http://www.nps.gov/casa/>

COMMENT FORM

Alternatives for the Castillo de San Marcos National Monument Proposed Seawall Rehabilitation Environmental Assessment

Please provide us with feedback on the alternatives for the Castillo de San Marcos National Monument proposed seawall rehabilitation project. If you need more space, feel free to attach additional pages to this form. If you prefer, you may also comment via e-mail at Gordon_Wilson@nps.gov. The National Park Service will not consider anonymous comments.

1. Do you think the alternatives for the proposed seawall rehabilitation are appropriate? If not, what is missing or inappropriate?
yes
2. Which alternative for the proposed seawall rehabilitation do you prefer and why? If you are not satisfied with any of the alternatives, please describe your preferred alternative.
C - we need protection that is secure
3. What else would you like the planning team to know with regard to this project?
maintain beauty of the bayfront, please.

Your Name:

Organization:

Address:

City/State or Territory/Zip:

Date:

Roslyn A Roberts

206 Herada St.

St Augustine FL 32080

9-28-06

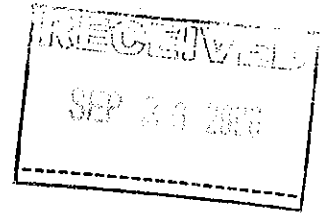
Please submit the completed form by October 2, 2006 to Gordon Wilson at the address above.



United States Department of the Interior



NATIONAL PARK SERVICE
Attention: Gordon Wilson, Superintendent
Castillo de San Marcos National Monument
1 South Castillo Drive
St. Augustine, FL 32084-3252
904-829-6506
<http://www.nps.gov/casa/>



COMMENT FORM

Alternatives for the Castillo de San Marcos National Monument Proposed Seawall Rehabilitation Environmental Assessment

Please provide us with feedback on the alternatives for the Castillo de San Marcos National Monument proposed seawall rehabilitation project. If you need more space, feel free to attach additional pages to this form. If you prefer, you may also comment via e-mail at Gordon_Wilson@nps.gov. The National Park Service will not consider anonymous comments.

1. Do you think the alternatives for the proposed seawall rehabilitation are appropriate? If not, what is missing or inappropriate?

yes

2. Which alternative for the proposed seawall rehabilitation do you prefer and why? If you are not satisfied with any of the alternatives, please describe your preferred alternative.

Alternative B, a promenade, would be a detraction. There would be more problems with trash, etc. than exist now. Also the riprap would sit much better with the Fort's historical appearance than would a promenade.

3. What else would you like the planning team to know with regard to this project?

Alternative B also takes care of the pressing need of SEAWALL SECTION B, something that the other alternatives do not do.

Your Name:

Louis & Connie Gaitanis

Organization:

Address:

21 Water Street

City/State or Territory/Zip:

St. Augustine, FL 32084-2819

Date:

9-15-06

Please submit the completed form by October 2, 2006 to Gordon Wilson at the address above.



United States Department of the Interior

NATIONAL PARK SERVICE
Attention: Gordon Wilson, Superintendent
Castillo de San Marcos National Monument
1 South Castillo Drive
St. Augustine, FL 32084-3252
904-829-6506
<http://www.nps.gov/casa/>

COMMENT FORM

Alternatives for the Castillo de San Marcos National Monument Proposed Seawall Rehabilitation Environmental Assessment

Please provide us with feedback on the alternatives for the Castillo de San Marcos National Monument proposed seawall rehabilitation project. If you need more space, feel free to attach additional pages to this form. If you prefer, you may also comment via e-mail at Gordon_Wilson@nps.gov. The National Park Service will not consider anonymous comments.

1. Do you think the alternatives for the proposed seawall rehabilitation are appropriate? If not, what is missing or inappropriate?
yes
2. Which alternative for the proposed seawall rehabilitation do you prefer and why? If you are not satisfied with any of the alternatives, please describe your preferred alternative.
Alternative C - Because it will be attractive, preserve the old seawall and provide a pleasant way for visitors to view the Castillo. Also, a similar restoration will be made of the St. Augustine city seawall south of the plaza. Maybe the two can be linked at a later date.
3. What else would you like the planning team to know with regard to this project?
Alternative B would be unsightly. Also it would be historically misleading as I don't think rip-rap existed in colonial Florida.

Your Name: Robert M. Ballinger
Organization: _____
Address: 34 Alado Cir.
City/State or Territory/Zip: St. Augustine, FL 32086
Date: Sept 16, 2006

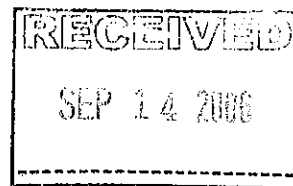
Please submit the completed form by October 2, 2006 to Gordon Wilson at the address above.



United States Department of the Interior



NATIONAL PARK SERVICE
Attention: Gordon Wilson, Superintendent
Castillo de San Marcos National Monument
1 South Castillo Drive
St. Augustine, FL 32084-3252
904-829-6506
<http://www.nps.gov/casa/>



COMMENT FORM

Alternatives for the Castillo de San Marcos National Monument Proposed Seawall Rehabilitation Environmental Assessment

Please provide us with feedback on the alternatives for the Castillo de San Marcos National Monument proposed seawall rehabilitation project. If you need more space, feel free to attach additional pages to this form. If you prefer, you may also comment via e-mail at Gordon_Wilson@nps.gov. The National Park Service will not consider anonymous comments.

1. Do you think the alternatives for the proposed seawall rehabilitation are appropriate? If not, what is missing or inappropriate?
I would consider alternative C as not only
most appropriate but urgent
it preserves the present historic wall as a feature
2. Which alternative for the proposed seawall rehabilitation do you prefer and why? If you are not satisfied with any of the alternatives, please describe your preferred alternative.
Having been here in 1964 for the hurricane Dora
and seeing the sea come over the seawall
without even breaking at it, I believe that the height
should be 3' above present.
3. What else would you like the planning team to know with regard to this project?
The danger that the present wall means to
the historic city as well as the Castillo grounds

Your Name:
Organization:
Address:
City/State or Territory/Zip:
Date:

Robert M. Hall
Ret. College Prof.
42 Spanish St.
St. Augustine, FL 32084
9/11/06

Please submit the completed form by October 2, 2006 to Gordon Wilson at the address above.



United States Department of the Interior

NATIONAL PARK SERVICE
Attention: Gordon Wilson, Superintendent
Castillo de San Marcos National Monument
1 South Castillo Drive
St. Augustine, FL 32084-3252
904-829-6506
<http://www.nps.gov/casa/>

COMMENT FORM

Alternatives for the Castillo de San Marcos National Monument Proposed Seawall Rehabilitation Environmental Assessment

Please provide us with feedback on the alternatives for the Castillo de San Marcos National Monument proposed seawall rehabilitation project. If you need more space, feel free to attach additional pages to this form. If you prefer, you may also comment via e-mail at Gordon_Wilson@nps.gov. The National Park Service will not consider anonymous comments.

1. Do you think the alternatives for the proposed seawall rehabilitation are appropriate? If not, what is missing or inappropriate?
YES, THEY ARE APPROPRIATE.
2. Which alternative for the proposed seawall rehabilitation do you prefer and why? If you are not satisfied with any of the alternatives, please describe your preferred alternative.
ALTERNATIVE B SEEMS BETTER THAN ALTERNATIVE C
IN THAT IT WOULD LOOK BETTER. ALTERNATIVE C
MIGHT LAST LONGER BUT WOULD DESTROY THE VISUAL
QUALITY OF THE SEAWALL.
3. What else would you like the planning team to know with regard to this project?
KEEP THE REHAB AS CLOSE TO HISTORICAL
IDENTITY AS POSSIBLE. NO MODERN MATERIALS
TO BE VISIBLE.

Your Name: NANCY PERRY
Organization: _____
Address: 716 WANDERING LANE
City/State or Territory/Zip: ST. AUGUSTINE, FL 32080
Date: Sept. 11, 2006

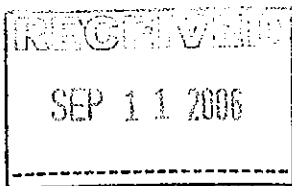
Please submit the completed form by October 2, 2006 to Gordon Wilson at the address above.



United States Department of the Interior



NATIONAL PARK SERVICE
Attention: Gordon Wilson, Superintendent
Castillo de San Marcos National Monument
1 South Castillo Drive
St. Augustine, FL 32084-3252
904-829-6506
<http://www.nps.gov/casa/>



COMMENT FORM

Alternatives for the Castillo de San Marcos National Monument Proposed Seawall Rehabilitation Environmental Assessment

Please provide us with feedback on the alternatives for the Castillo de San Marcos National Monument proposed seawall rehabilitation project. If you need more space, feel free to attach additional pages to this form. If you prefer, you may also comment via e-mail at Gordon_Wilson@nps.gov. The National Park Service will not consider anonymous comments.

1. Do you think the alternatives for the proposed seawall rehabilitation are appropriate? If not, what is missing or inappropriate?
Yes, they are appropriate
2. Which alternative for the proposed seawall rehabilitation do you prefer and why? If you are not satisfied with any of the alternatives, please describe your preferred alternative.
I prefer Alternative B which will allow us to see the original seawall. It appears that Alt. C would obscure that view. Alt. B also would appear more "natural-looking" than Alt. C.
3. What else would you like the planning team to know with regard to this project?

Your Name:

Jan Floyd

Organization:

Address:

24 Cathedral Pl, Ste 601

City/State or Territory/Zip:

St. Aug. FL 32084

Date:

9/5/06

Please submit the completed form by October 2, 2006 to Gordon Wilson at the address above.



United States Department of the Interior

NATIONAL PARK SERVICE
Attention: Gordon Wilson, Superintendent
Castillo de San Marcos National Monument
1 South Castillo Drive
St. Augustine, FL 32084-3252
904-829-6506
<http://www.nps.gov/casa/>

COMMENT FORM

Alternatives for the Castillo de San Marcos National Monument Proposed Seawall Rehabilitation Environmental Assessment

Please provide us with feedback on the alternatives for the Castillo de San Marcos National Monument proposed seawall rehabilitation project. If you need more space, feel free to attach additional pages to this form. If you prefer, you may also comment via e-mail at Gordon_Wilson@nps.gov. The National Park Service will not consider anonymous comments.

1. Do you think the alternatives for the proposed seawall rehabilitation are appropriate? If not, what is missing or inappropriate?

THEY APPEAR APPROPRIATE TO ME.

2. Which alternative for the proposed seawall rehabilitation do you prefer and why? If you are not satisfied with any of the alternatives, please describe your preferred alternative.

I BELIEVE ALTERNATIVE C IS A BETTER LONG TERM SOLUTION. I AM NOT AN ENGINEER, BUT I BELIEVE EROSION COULD CONTINUE WITH RIPRAP IN PLACE. THE PROMENADE WOULD BE A GOOD ADDITION TO THE WATERFRONT.

3. What else would you like the planning team to know with regard to this project?

IF YOU SELECT ALTERNATIVE C, I RECOMMEND THE OLD WALL BE MARKED WITH APPROPRIATE SIGNAGE.

Your Name: Walter C. Daniels
Organization: 148 Ocean Hollow Lane
Address: St. Augustine, Florida 32084-1748
City/State or Territory/Zip:
Date: SEP 7, 2006

Please submit the completed form by October 2, 2006 to Gordon Wilson at the address above.

Tom Sims

09/06/2006 09:14 AM
EDT

To: Gordon Wilson/CASA/NPS@NPS

CC:

Subject: Fw: From NPS.gov: Alternatives for Seawall Rehabilitation

Thomas E. Sims
Information Technology Specialist
Castillo de San Marcos and Ft Matanzas
National Monuments
St. Augustine, Florida 32084
904-829-6506, x243
904-669-0711 - cell

----- Forwarded by Tom Sims/CASA/NPS on 2006-09-06 09:13 AM -----



bppettie@bellsouth.net

2006-09-05 08:15 PM
AST

To: casa_ranger_activities@nps.gov

CC:

Subject: From NPS.gov: Alternatives for Seawall Rehabilitation

Email submitted from: /casa/index.htm

Gordon, I received the comment form and am responding here. 1. Yes, the alternatives are appropriate and sufficient. 2. I prefer alternative #2 -- Rip Rap b/c it creates a better environmental condition for river creatures, it appears to be less expensive and intrusive into the ecological system and we really do not need a promenade. 3. I would hope the planning and decision team will keep not only the best alternative in mind, but the least intrusive into the system and consider expense to taxpayers. Thank you for asking, paul pettie, 1591 San Carlos St., St. Aug, 32080-5480 904 471 4541

This page intentionally left blank.

NEWSLETTER



Castillo de San Marcos National Monument Proposed Seawall Rehabilitation

August 2006

Environmental Assessment Underway

News from the Superintendent

Friends,

Castillo de San Marcos National Monument is preparing an environmental assessment in conjunction with the proposed rehabilitation of the seawall that protects the fort. This newsletter describes the project background, the results of preliminary planning efforts completed by the National Park Service planning team, a description of the proposed alternatives, and a summary of the next steps in the environmental assessment process.

We want to hear from you so that we may make the most informed decisions concerning the alternatives on this proposed project. We appreciate your input into this process.

Thank you for your interest in the proposed seawall rehabilitation project.

Sincerely,

Gordie Wilson, Superintendent

A comment form is included on page 4 of this newsletter for your convenience.

You are welcome to write to us at the address given on page 4, but our preference would be for you to provide your comments on the National Park Service Planning, Environment & Public Comment (PEPC) web site. Comments can be made directly online by going to the following link:
<http://parkplanning.nps.gov>

Please provide us with your comments by October 2, 2006.

Background

Castillo de San Marcos National Monument is located in St. Augustine, St. Johns County, Florida. The Castillo de San Marcos fort was originally constructed between 1672 and 1695. The National Monument encompasses approximately 20 acres and lies north of St. Augustine's central plaza fronting Matanzas Bay. The city of St. Augustine is located on the eastern coastal plain of Florida. It is a low-lying, sandy area protected from the sea by a number of barrier islands. A seawall and water battery separates Castillo de San Marcos National Monument from the waters of Matanzas Bay on the fort's east side.

Purpose and Need

The existing seawall was constructed in



1842 from coquina and granite; and is considered an historic structure. Two

sections of the existing seawall (sections A and B) at the park are failing due to water penetration from Matanzas Bay, a tidal body of water near the St. Augustine Inlet to the Atlantic Ocean. The water penetration has resulted in erosion and the collapse of sections of sidewalk at the park. Rehabilitation of these sections of the seawall is required to protect the historic fort.

The southern section of the failing seawall (section A) is approximately 243 feet in length. The northern section (section B) is approximately 70 feet in



length.

The National Park Service proposes to rehabilitate a portion of the existing seawall at Castillo de San Marcos National Monument. An environmental assessment will be prepared that will evaluate the environmental effects of the alternatives being considered to rehabilitate this historic seawall.

Early Planning

The National Park Service held an internal meeting at the National Monument in July, 2006 to identify potential environmental issues associated with the proposed rehabilitation of the historic seawall. As the fort and the seawall are each historic properties, the seawall rehabilitation project must be carefully planned to minimize impacts. Visitor experience could be affected by the proposed seawall rehabilitation



Seawall Section A, 243 feet

project, as visitors often fish near the seawall or enjoy the view from the seawall.

Description of the Proposed Alternatives

Three alternatives for this project are proposed for environmental assessment. The No Action alternative, Alternative A, is defined as continuing present management practices at the National Monument. Under this alternative, the seawall would not be rehabilitated. The No Action alternative provides a basis for comparing the two action alternatives. The No Action alternative is addressed in accordance within the National Environmental Policy Act.

The two action alternatives are titled Alternative B and Alternative C. Alternative B was developed as a result of an engineering analysis conducted by

the park in 2004. This alternative

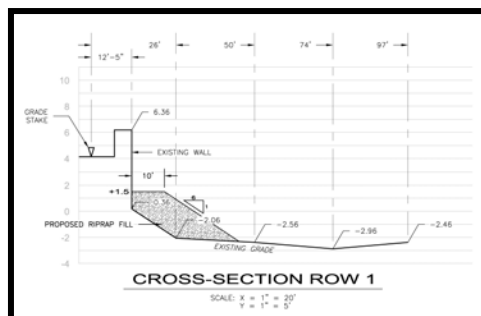


Seawall Section B, 70 feet

includes placing riprap along the seaward side of the two sections of seawall to be rehabilitated. Riprap is a term for large rocks or boulders that are placed on the seaward side of the seawall to provide support for the wall and reduce the erosive effects of wave action. The riprap would be installed from the base of the seawall to a height of 1.5 feet above sea level, or approximately 2.5 to 3.5 feet above the existing elevation at the base of the seawall. The riprap would extend seaward for 10 feet at this elevation, then would slope down at 6:1 to grade.

The riprap would be added to approximately 243 feet of the southernmost seawall at the National Monument (section A) and approximately 70 feet of the seawall near the northeast corner of the fort (section B). It is estimated that approximately 824 cubic yards of riprap material would be needed for this alternative.

materials and would be constructed at a height of 7.7 feet above mean sea level, or approximately 0.7 to 2.1 feet higher than the existing historic seawall at the National Monument. This alternative would extend to the north approximately 243 feet from the south National Monument property boundary, shown as seawall section A. The area between the seawalls would be filled with soil and a 12 foot promenade would be constructed over the fill. The existing historic seawall would be capped and used for seating. Seawall section B as shown would not be rehabilitated under this alternative.



Alternative C is the other action alternative. This alternative consists of positioning a new parallel seawall approximately 12 feet seaward of the existing historic seawall. The new seawall would be constructed of modern



United States Department of the Interior

NATIONAL PARK SERVICE
Attention: Gordon Wilson, Superintendent
Castillo de San Marcos National Monument
1 South Castillo Drive
St. Augustine, FL 32084-3252
904-829-6506
<http://www.nps.gov/casa/>

COMMENT FORM

Alternatives for the Castillo de San Marcos National Monument Proposed Seawall Rehabilitation Environmental Assessment

Please provide us with feedback on the alternatives for the Castillo de San Marcos National Monument proposed seawall rehabilitation project. If you need more space, feel free to attach additional pages to this form. If you prefer, you may also comment via e-mail at Gordon_Wilson@nps.gov. The National Park Service will not consider anonymous comments.

1. Do you think the alternatives for the proposed seawall rehabilitation are appropriate? If not, what is missing or inappropriate?

2. Which alternative for the proposed seawall rehabilitation do you prefer and why? If you are not satisfied with any of the alternatives, please describe your preferred alternative.

3. What else would you like the planning team to know with regard to this project?

Your Name: _____
Organization: _____
Address: _____
City/State or Territory/Zip: _____
Date: _____

Please submit the completed form by October 2, 2006 to Gordon Wilson at the address above.



National Park Service
U.S. Department of the Interior

Castillo de San Marcos National Monument
1 South Castillo Drive
St. Augustine, FL 32084-3252

EXPERIENCE YOUR AMERICA

Next Steps

The draft environmental assessment will be made available for public review and comment in the spring of 2007. All comments received will be incorporated into a final environmental assessment. If applicable, the finding of no significant impact (FONSI) will be made available to the public in late spring or early summer 2007. All comments will be included as part of the formal public record maintained by the National Park Service.

The National Park Service appreciates your input into this planning process and would like to obtain your comments. We request that you provide your comments electronically, or by mail using the following contact information:

Comments? Write to:

National Park Service
Castillo de San Marcos National Monument
Attn: Gordon Wilson
Castillo de San Marcos Seawall Rehabilitation Comments
1 South Castillo Drive
St. Augustine, FL 32084-3252

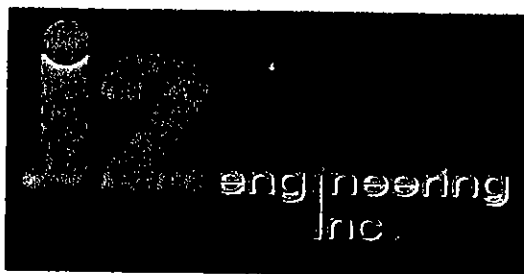
You may also enter comments directly through the Internet by directing your web browser to the following URL address: <http://parkplanning.nps.gov>

Our practice is to make comments, including names, home addresses, home phone numbers, and email addresses of respondents, available for public review. Individual respondents may request that we withhold their names and/or home addresses, etc., but if you wish us to consider withholding this information you must state this prominently at the beginning of your comments. In addition, you must present a rationale for withholding this information. This rationale must demonstrate that disclosure would constitute a clearly unwarranted invasion of privacy. Unsupported assertions will not meet this burden. In the absence of exceptional, documentable circumstances, this information will be released. We will always make submissions from organizations or businesses, and from individuals identifying themselves as representatives of or officials of organizations or businesses, available for public inspection in their entirety.

This page intentionally left blank.

APPENDIX B

ENGINEERING REPORT FOR PREFERRED ALTERNATIVE



285 NW 138th Terrace
Suite 100
Jonesville, FL 32669

ph: (352) 333-9644
fax: (352) 333-9648

June 9, 2006

Robin Leatherman
National Park Service
Castillo de San Marcos
1 South Castillo Drive
St. Augustine, FL 32084

RE: Survey of Historic Retaining Wall at the Castillo de San Marcos

Dear Robin:

As you requested, J2 Engineering, Inc. (J2) visited the Castillo de San Marcos on May 31, 2006, at which time a survey of the existing wall was conducted in two locations. The majority of the investigation was conducted on the seaward side of the wall, with subsurface elevations being obtained. Results of this survey effort are presented in the attached figures.

The portion of the wall south of the Castillo has shown signs of distress (a significant outward displacement at the bottom/toe of the wall) and was the subject of a previous study prepared by J2 in July 2004. The portion of the wall north of the Castillo has not been displaced; however, it does display other areas of concern, including large cracks, erosion, and wash out from behind the wall.

One of the recommendations presented in J2's July 2004 report was for rip-rap to be placed on the passive (seaward) side of the wall. On the attached figures a proposed fill cross section has been superimposed atop the survey measurements that were obtained. Assuming that the rip rap is placed to an elevation of +1.5 (approximately 2.5 - 3.5 feet above the existing elevation at the wall) for a distance of 10 feet beyond the wall and then sloping at 6:1 to grade, J2 estimates that approximately 824 cubic yards of material will be needed.

The same procedure implemented at the north end of the wall would require 137 cubic yards of rip rap. Although fill in front of any wall will relieve applied stresses, J2 suggests that a more cost effective solution at this time might be to repair all cracks with hydraulic lime mortar and to fill any voids in front of and behind the walls in this area.

J2 appreciates the opportunity to provide professional engineering services to the National Park Service. Should you have any questions, please call me at 352-333-9644.

Sincerely
J2 Engineering, Inc.

A handwritten signature in black ink, appearing to read "Richard G. Wheeler".

Richard G. Wheeler, P.E.
V.P. of Engineering, Project Manager

Cc: Don Mueller

C:\PROJECTS\CastilloDeSanMarco\Drawing1.dwg DATE: 06/13/2006 TIME: 01:41:22PM



CONTRACT NUMBER:
-
PROJECT NUMBER:
-
DATE:
June 2006

PROJECT:
Survey Of Wall,
Castillo De San Marcos
CLIENT:
National Park Service

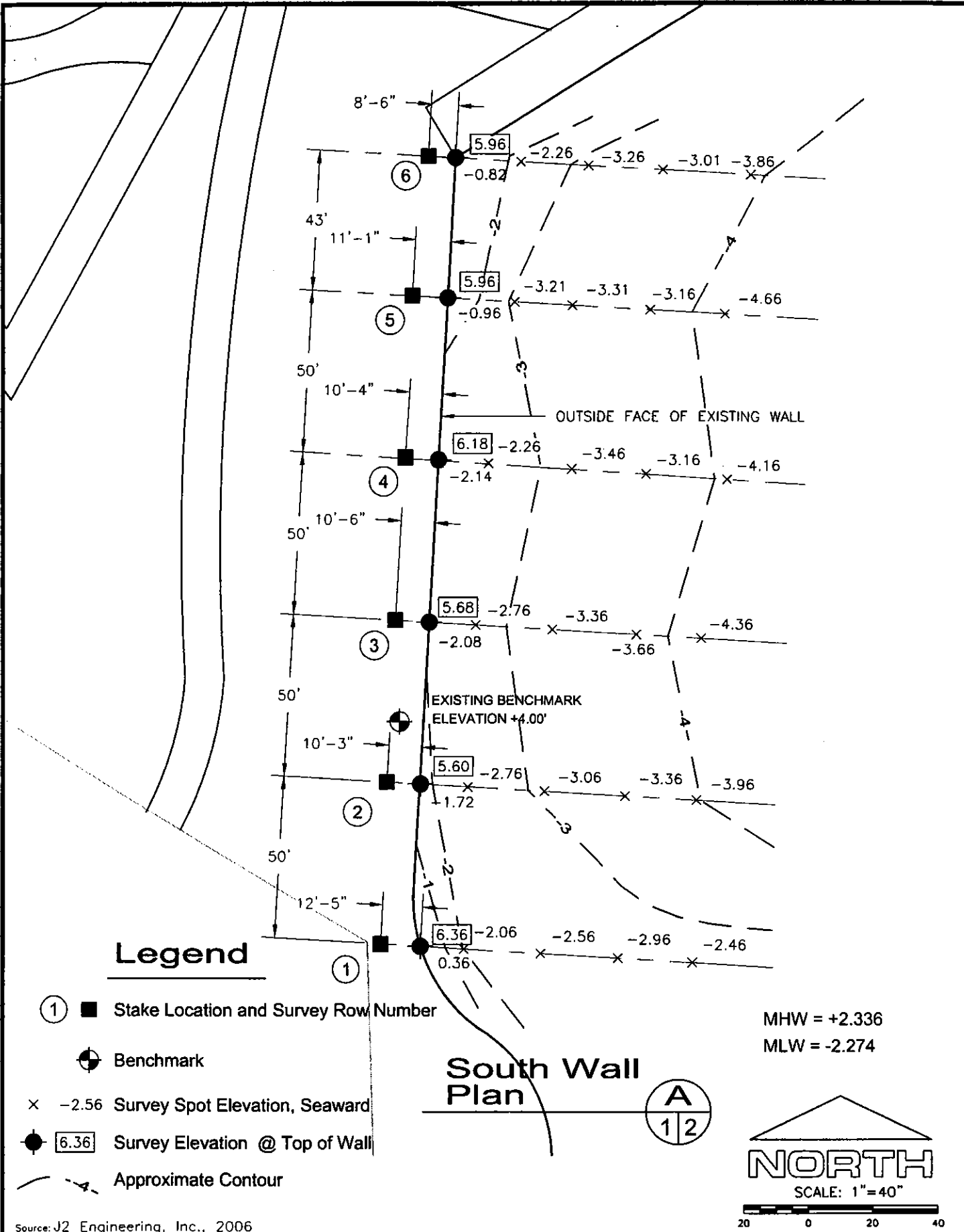
Figure No. 1
TITLE:
Site Location Map



B
1/6

A
1/2

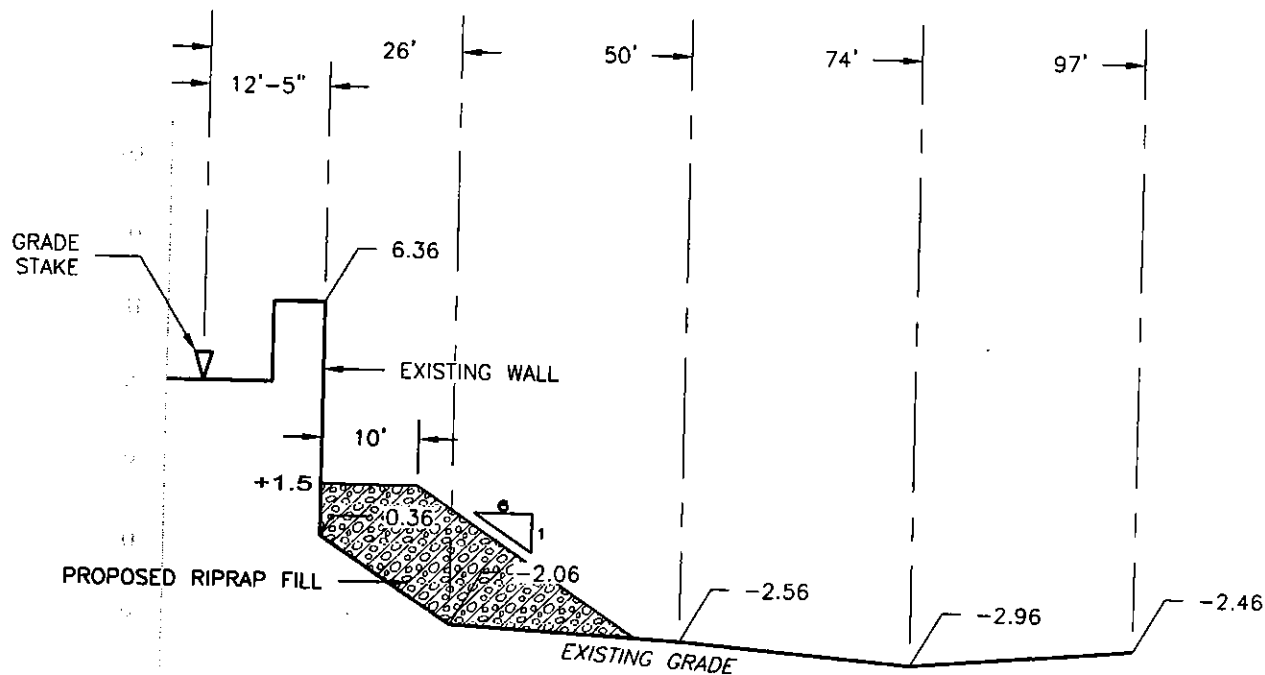
C:\PROJECTS\CastilloDeSanMarco\Drawing1.dwg\DATE: 06/13/2006\TIME: 01:42:01PM



Source: J2 Engineering, Inc., 2006

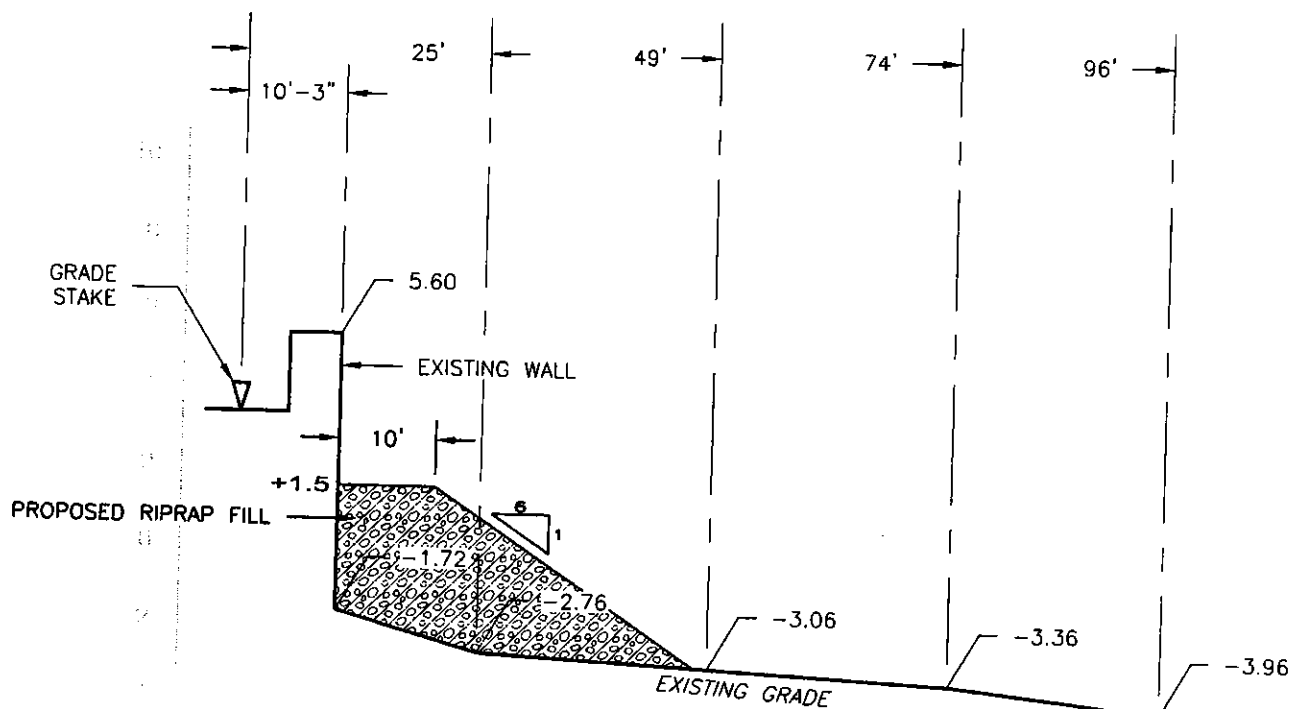


CONTRACT NUMBER: -	PROJECT: Survey Of Wall, Castillo De San Marcos	Figure No. 2
PROJECT NUMBER: -	CLIENT: National Park Service	TITLE: South Wall
DATE: June 2006		



CROSS-SECTION ROW 1

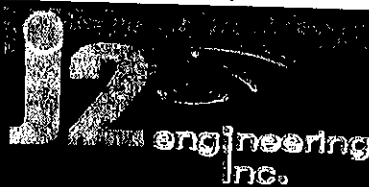
SCALE: X = 1" = 20'
Y = 1" = 5'



CROSS-SECTION ROW 2

SCALE: X = 1" = 20'
Y = 1" = 5'

Source: J2 Engineering, Inc., 2006



CONTRACT NUMBER:

-

PROJECT NUMBER:

-

DATE:

June 2006

PROJECT:

Survey Of Wall,
Castillo De San Marcos

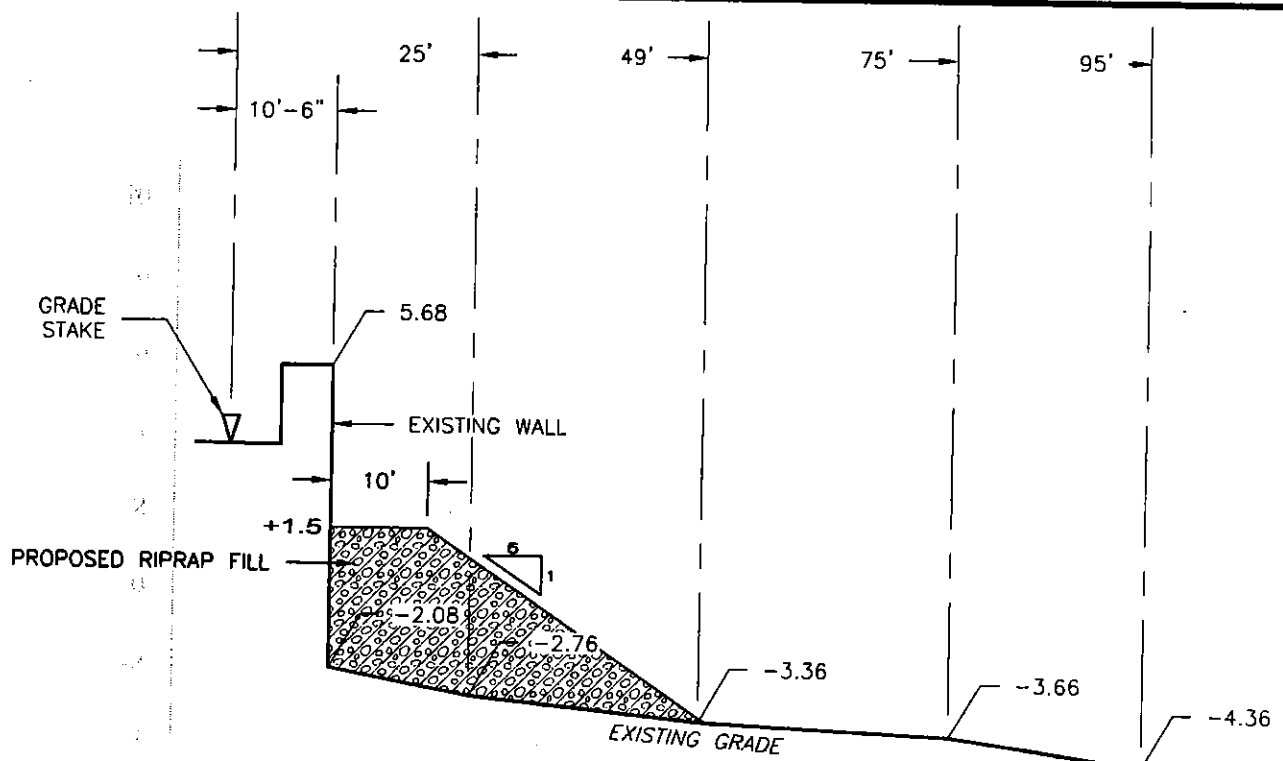
CLIENT:

National Park Service

Figure No. 3

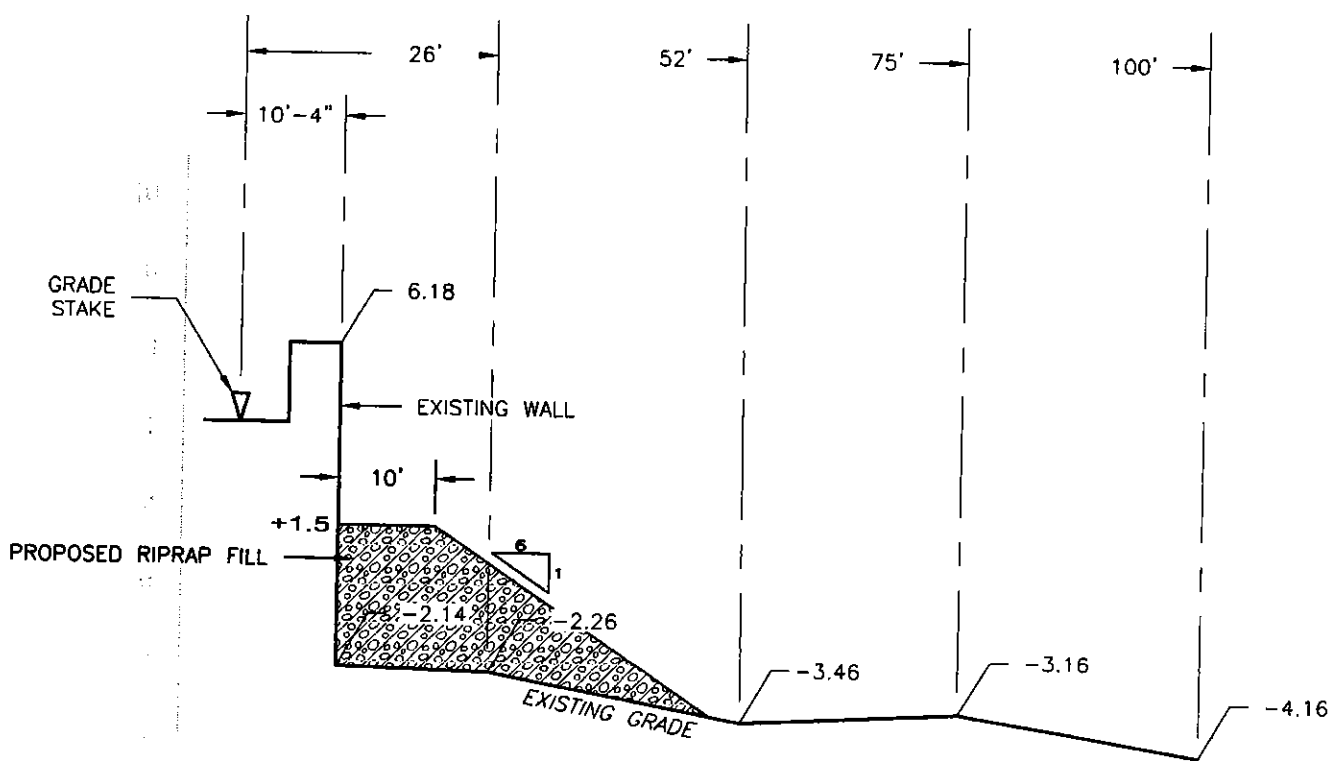
TITLE:

South Wall
Cross-Sections



CROSS-SECTION ROW 3

SCALE: X = 1" = 20'
Y = 1" = 5'



CROSS-SECTION ROW 4

SCALE: X = 1" = 20'
Y = 1" = 5'

Source: J2 Engineering, Inc., 2006



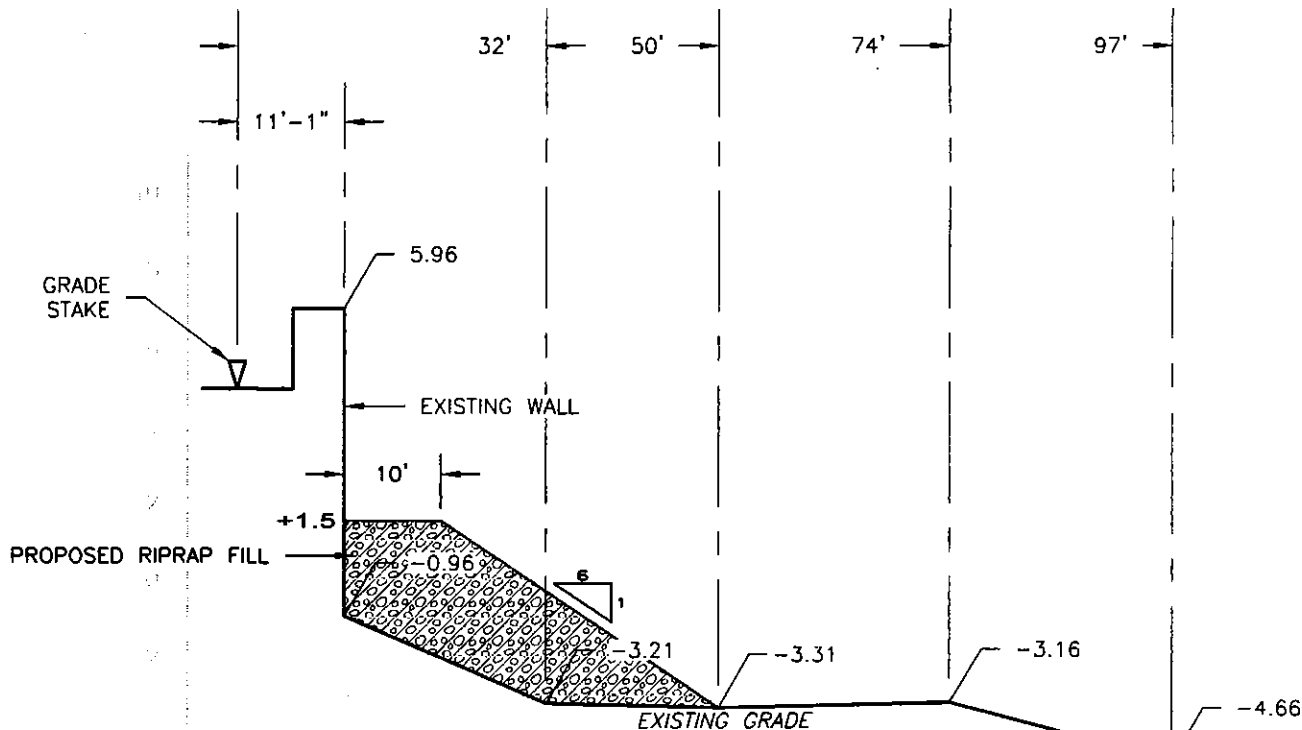
C:\PROJECTS\CastilloDeSanMarco\Drawing1.dwg DATE: 06/13/2006 TIME: 01:42:18PM



CONTRACT NUMBER:	PROJECT:
-	Survey Of Wall, Castillo De San Marcos
PROJECT NUMBER:	
-	
DATE:	CLIENT:
June 2006	National Park Service

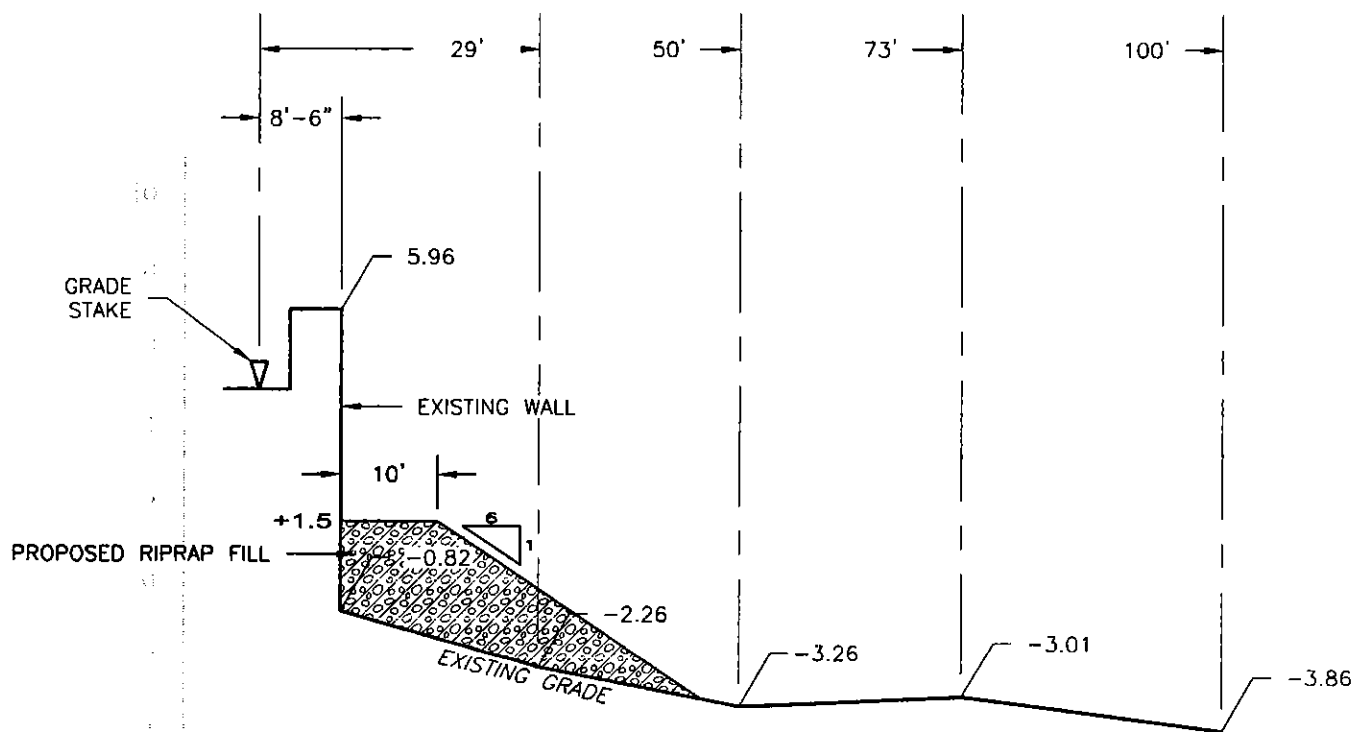
Figure No. 4
TITLE: South Wall Cross-Sections

C:\PROJECTS\CastilloDeSanMarco\Drawing1.dwg\DATE: 06/13/2006\TIME: 01:42:26PM



CROSS-SECTION ROW 5

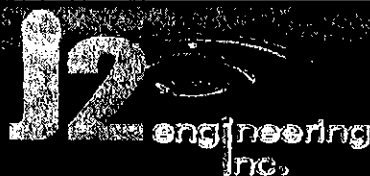
SCALE: X = 1" = 20'
Y = 1" = 5'



CROSS-SECTION ROW 6

SCALE: X = 1" = 20'
Y = 1" = 5'

Source: J2 Engineering, Inc., 2006



CONTRACT NUMBER:

-

PROJECT NUMBER:

-

DATE:

June 2006

PROJECT:

Survey Of Wall,
Castillo De San Marcos

CLIENT:

National Park Service

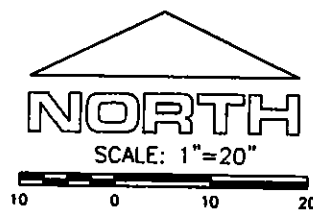
Figure No. 5

TITLE:

South Wall
Cross-Sections

Outside Face
of Existing Wall

NOTE:
All elevations are
relative and were
not tied to a
benchmark.



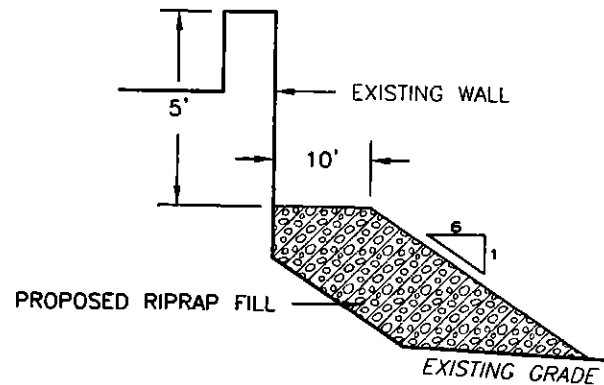
FILL ALL VOIDS, CRACKS, GAPS IN EXISTING WALL
WITH HYDRAULIC LIME MORTAR

North Wall Plan



Legend

- ① Survey Row Number
- × -2.95 Survey Spot Elevation, Seward
- [6.36] Survey Elevation @ Wall (Landside)
- - - Approximate Contour



TYPICAL CROSS-SECTION

SCALE: X = 1" = 20'
Y = 1" = 5'

Source: J2 Engineering, Inc., 2006



CONTRACT NUMBER:

-

PROJECT NUMBER:

-

DATE:

June 2006

PROJECT:

Survey Of Wall,
Castillo De San Marcos

CLIENT:

National Park Service

Figure No. 6

TITLE:

North Wall

ROW	AREA	AVERAGE	DISTANCE	VOLUME (CUBIC FEET)	FACTOR	VOLUME (CUBIC YARDS)
1	60.70 S.F.	76.47	50	3823.5	27	141.6
2	92.24 S.F.					
3	98.62 S.F.	95.43	50	4771.5		176.7
4	87.98 S.F.	93.3	50	4665		172.8
5	90.99 S.F.	89.485	50	4474.25		165.7
6	70.07 S.F.	80.53	43	3462.79		128.3
ENDS	52.5 S.F.(EACH)			1050		38.9
NW	60.70 S.F.		61	3702.7		824
						137.1
					TOTAL	
					27	