



Peace Corps Commemorative

SECTION 106 CONSULTATION

April 15, 2019

AGENDA

Introductions

Overview of Undertaking

Site History

Review of Draft Area of Potential Effect

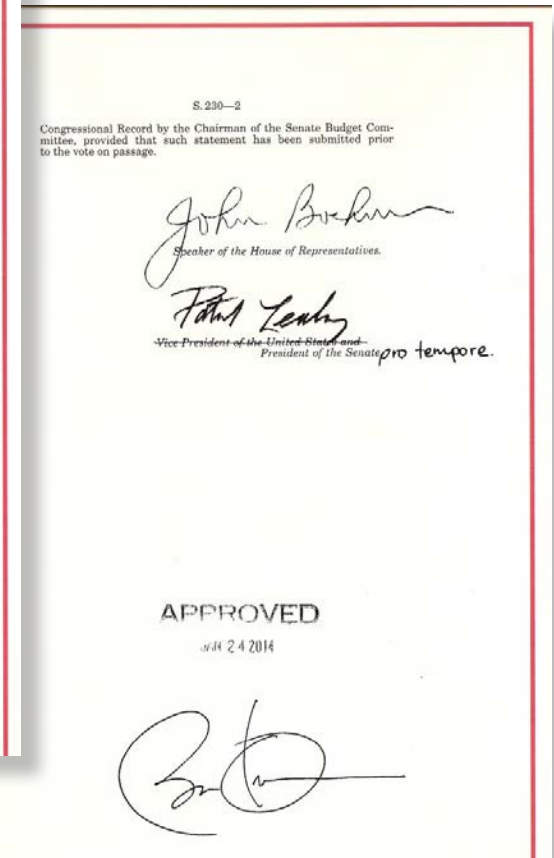
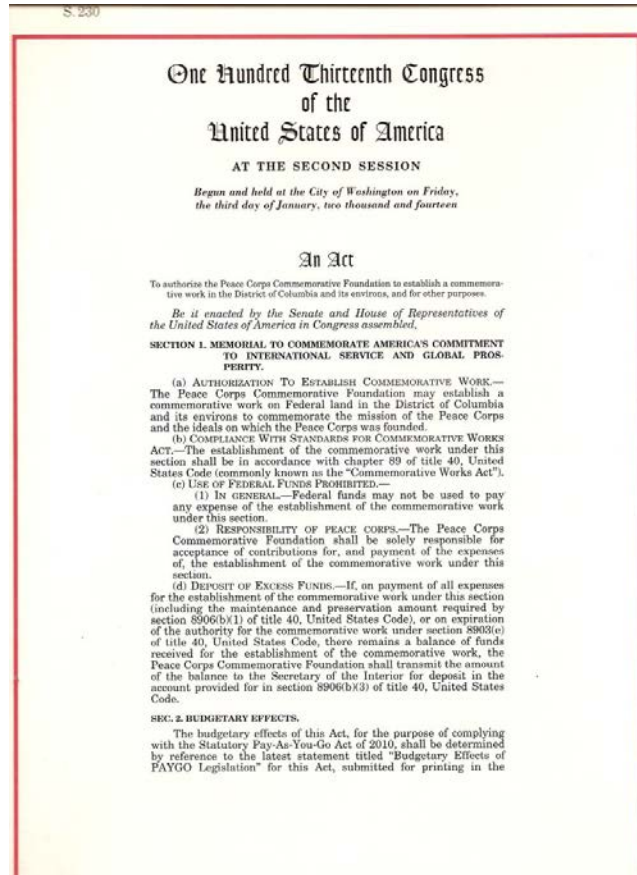
Design Concept

Discussion

Next Steps

AUTHORIZING LEGISLATION

- In 2014, Congress authorized the Peace Corps Commemorative Foundation (PCCF) to build a commemorative work in the heart of Washington, DC, to recognize the historic significance of the establishment of the Peace Corps in 1961 and to honor the timeless, enduring American ideals on which the Peace Corps was founded.



OVERVIEW OF UNDERTAKING

Purpose of the Commemorative

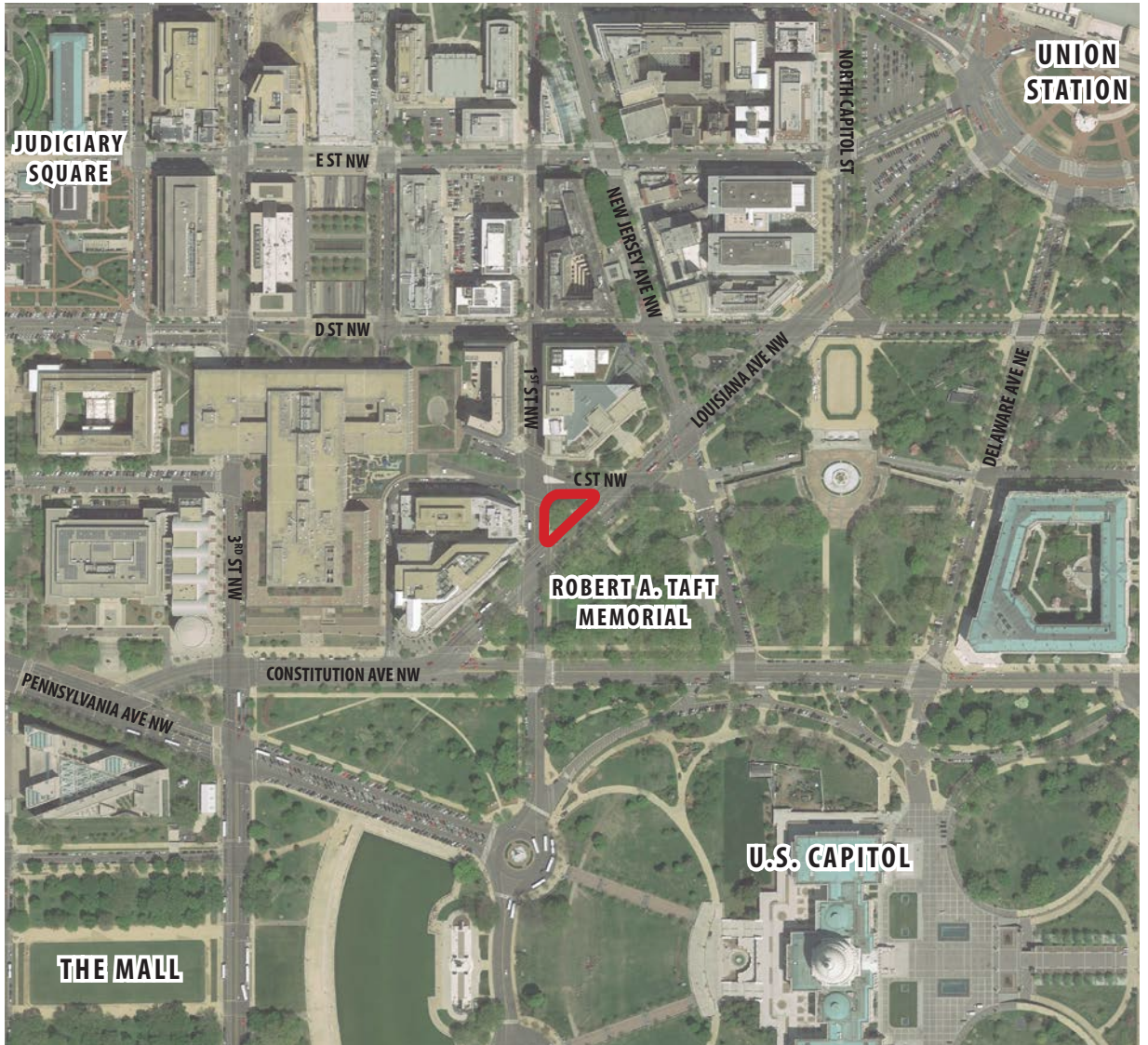
- To commemorate the enduring historic significance of the Peace Corps' 1961 founding, and the fundamental American ideals and values that the Peace Corps' historic founding and Peace Corps service embody

Need for the Commemorative

- To carry out Public Law 113-78, which authorized the establishment of the Peace Corps Commemorative work in the District of Columbia

SITE CONTEXT

- Approximately 0.25 acre flat site at Louisiana Avenue, C Street, and First Street NW
- Located adjacent to the Robert A. Taft Memorial and north of the U.S. Capitol Grounds
- Grass panel site surrounded by sidewalks

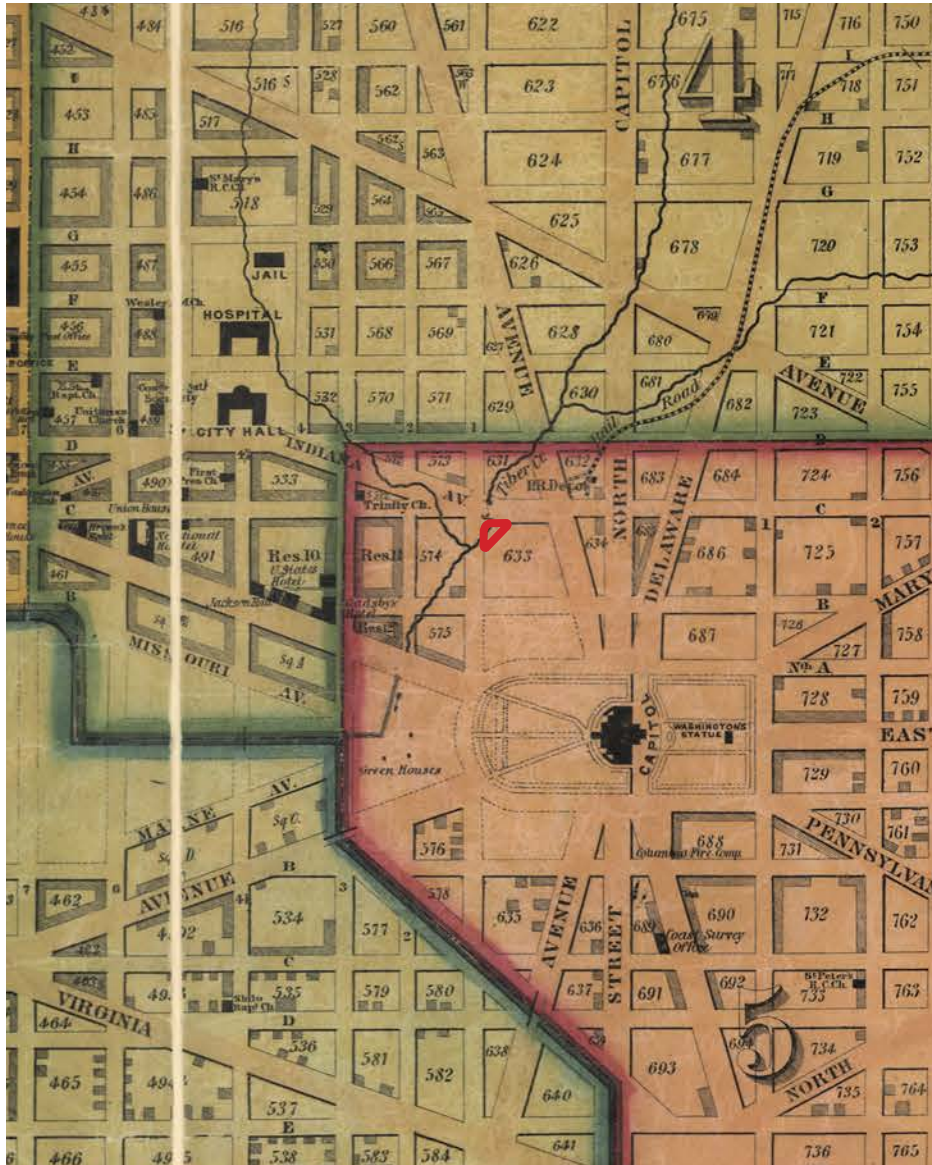


SITE HISTORY

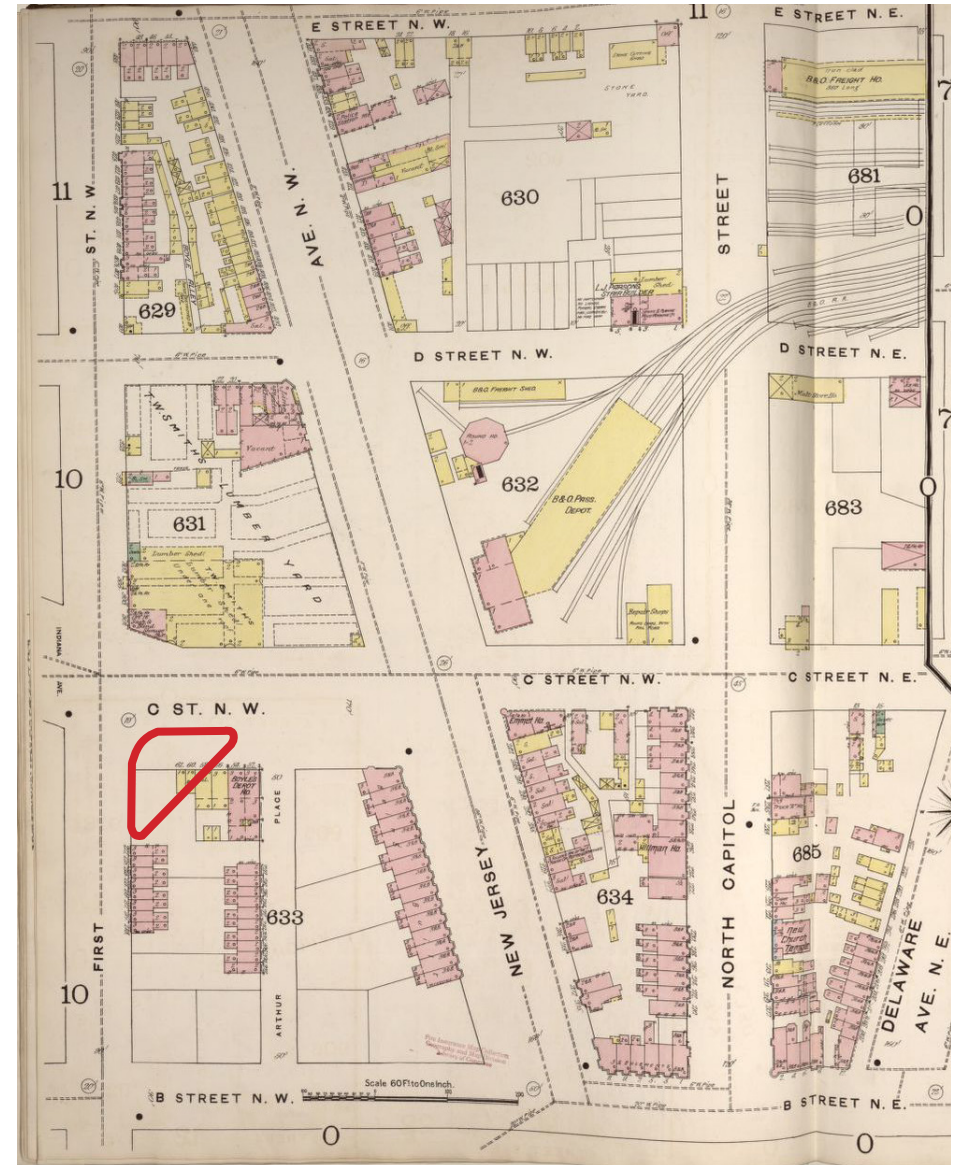


1792

SITE HISTORY

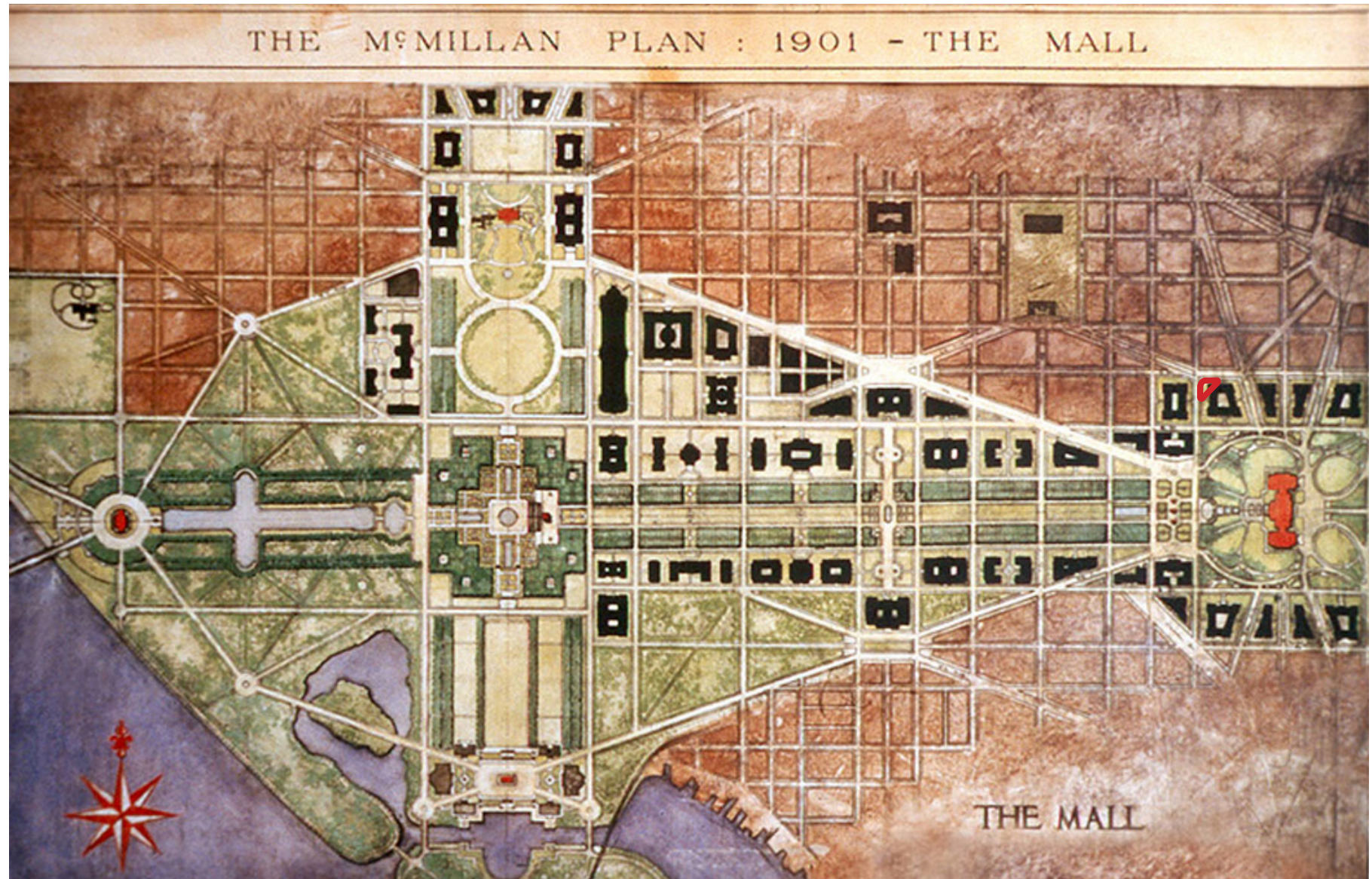


1851



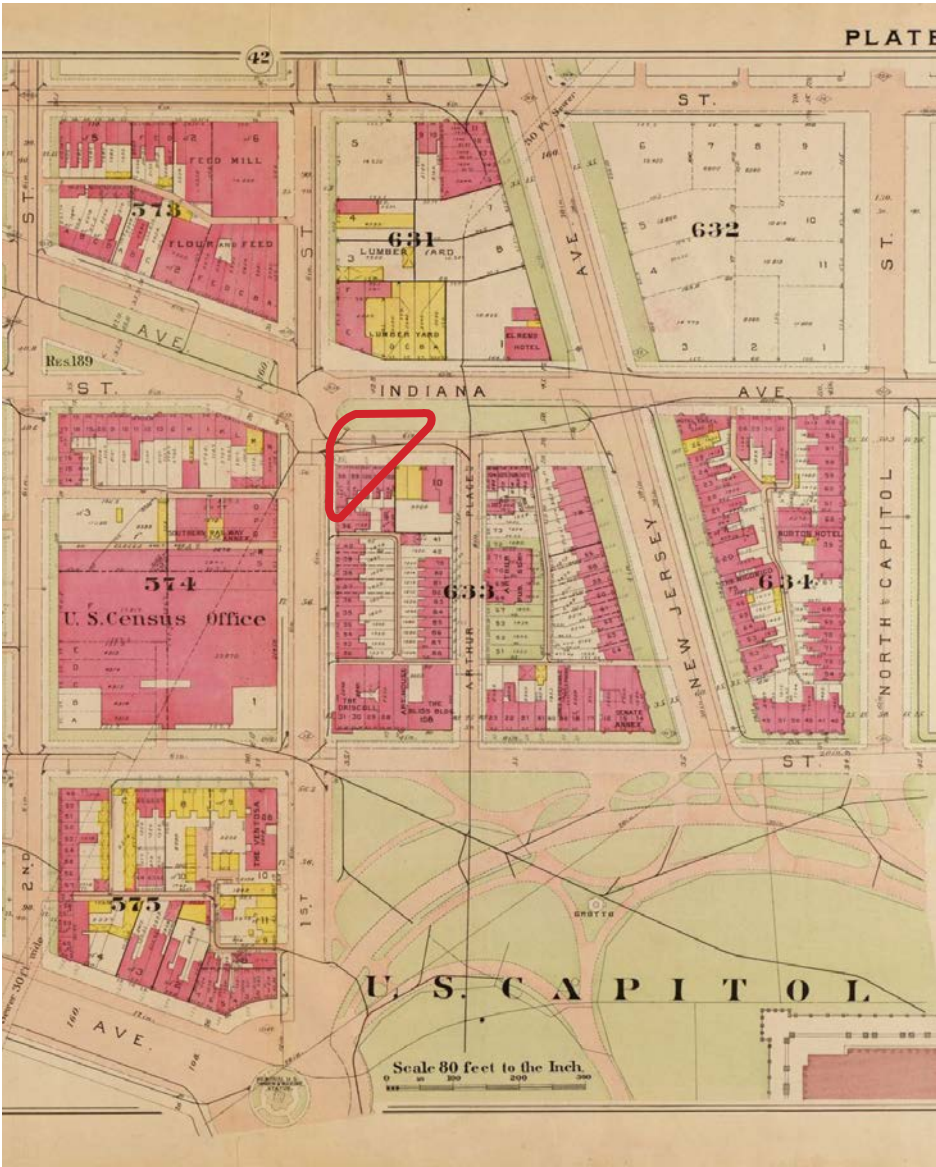
1888

SITE HISTORY



1901

SITE HISTORY

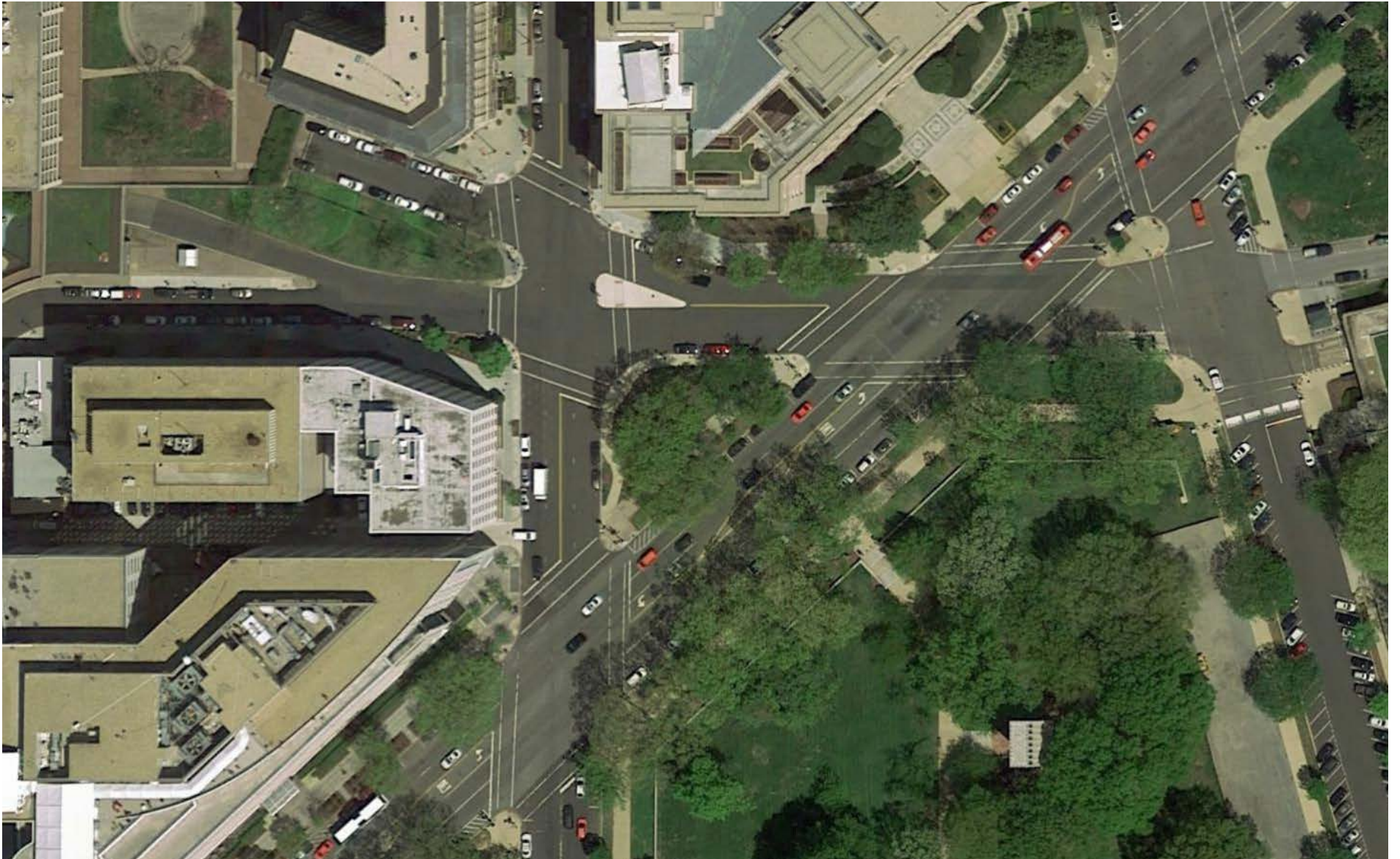


1909



1956

SITE HISTORY



2018

SITE PHOTOS



View northeast towards the site



View southwest along Louisiana Avenue NW sidewalk and across site to 1st Street NW



View northeast along Louisiana Avenue NW sidewalk and across site to C Street NW

SITE PHOTOS



View southeast from Indiana Avenue NW towards the site



View southeast from site

DRAFT AREA OF POTENTIAL EFFECT



0 500 1,000 2,000 Feet

Source: Esri, DigitalGlobe, GeoEye, i-cubed, Earthstar Geographics, CNES/Airbus DS, USDA, USGS, DC GIS, AEX, Getmapping, Aerogrid, IGN, IGP, swisstopo, and the GIS User Community

DESIGN CONCEPT

Since 2015, the Peace Corps Commemorative Foundation (PCCF) and its invited review committees have received hundreds of Commemorative design concept submissions from artists, architects and landscape architects, first through an open competition and then through invited solicitations. But until last year, no design concept adequately captured and successfully expressed visually the historic meanings and messages of this commemorative work on this challenging site.

In 2018, the PCCF selected artist Larry Kirkland and Michael Vergason Landscape Architects to design an original concept that achieves the artistic and interpretive goals of this project.

For this special site, the design concept blends abstraction and figuration in a composition unlike other monuments and memorials in America's capital city. Through visual form and interpretive text, the aesthetically compelling ensemble will symbolically convey the Commemorative's inspirational messages.



Concept Sketches

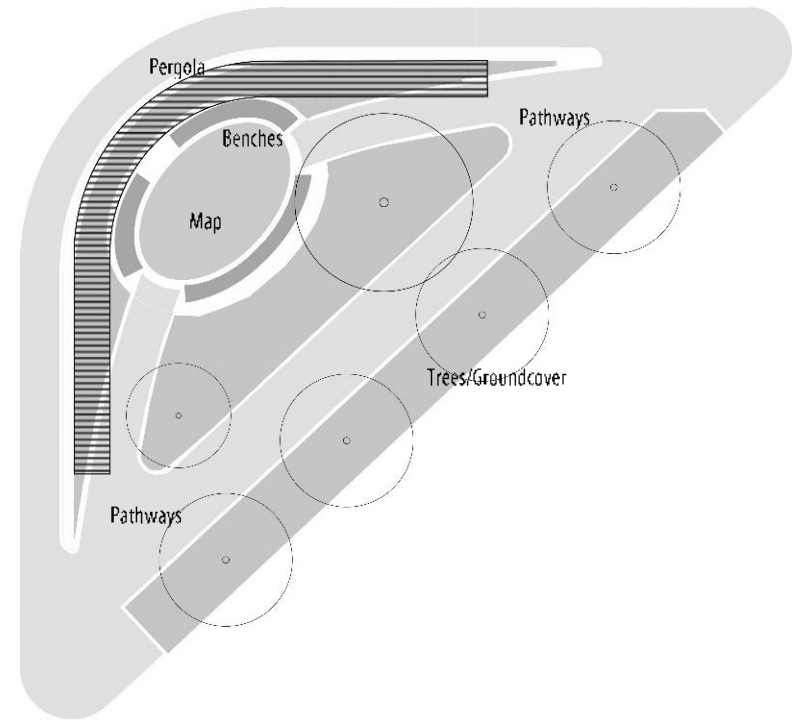
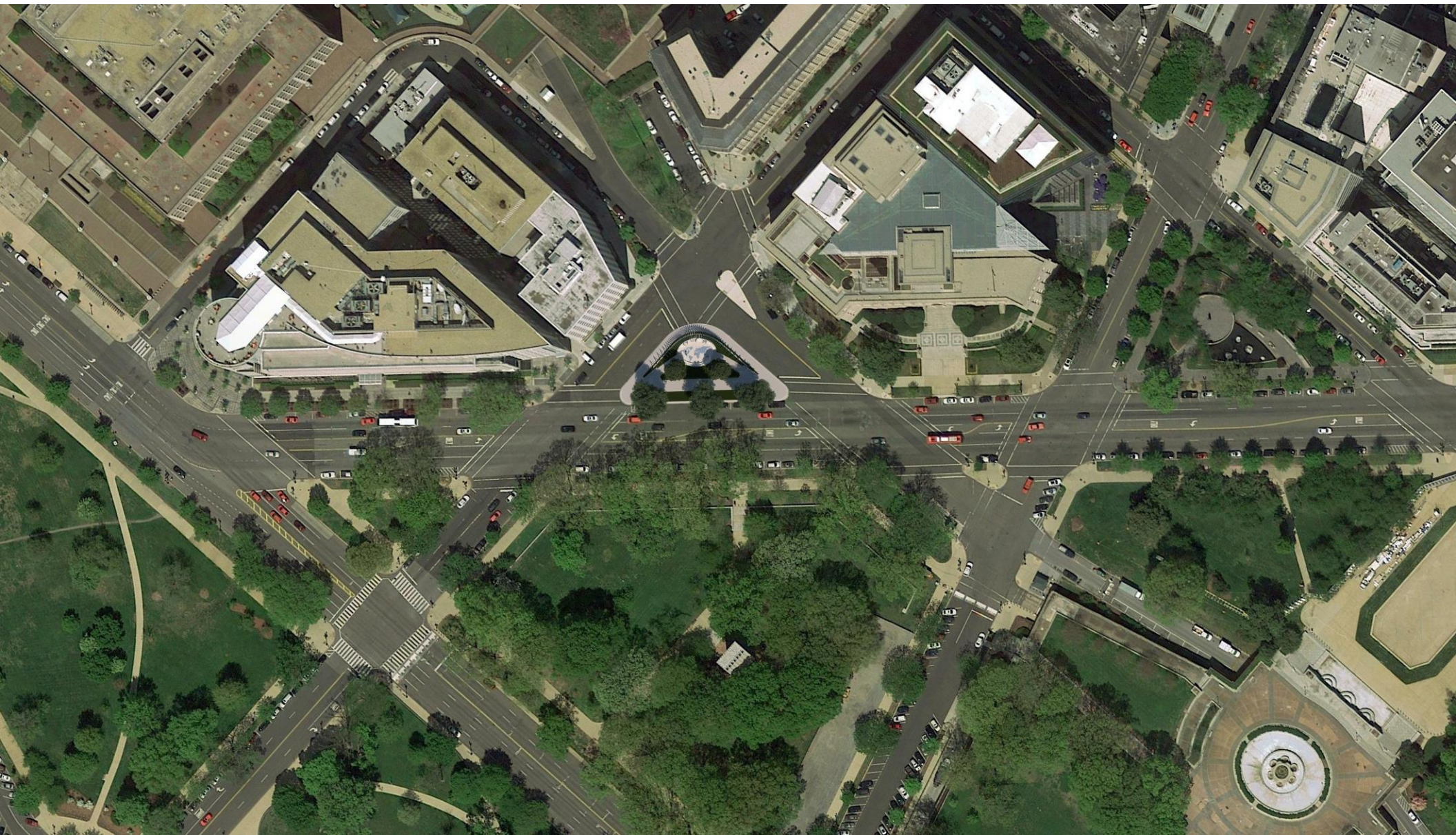
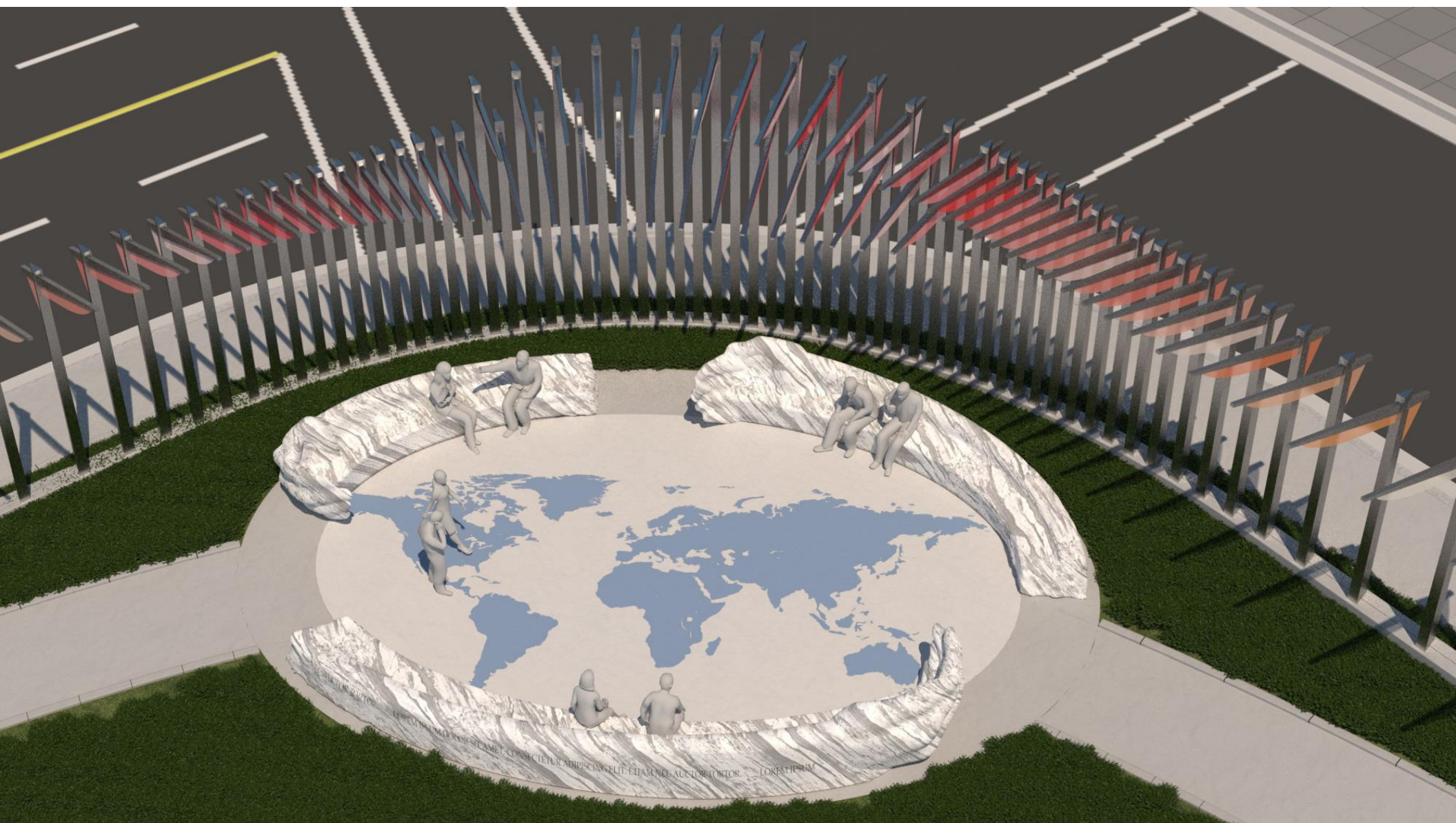


Diagram of Commemorative Elements





Bird's eye view of the triangular site showing the overall Commemorative composition. In the central plaza at the heart of the Commemorative site is a world map without national boundaries. The world map symbolically expresses the goal of breaking down divisive barriers to transcend political, cultural, and ethnic differences between disparate peoples.



A pergola embraces the Commemorative site and imparts a memorable sense of place. The pergola wraps around the western and northern sides of the triangular site to landmark, frame, and animate the triangular NPS property. The pergola's individual metal elements with glass blades of differing colors symbolize the diversity of humanity and the unity of disparate peoples engaging and interacting with each other. To express this, the pergola's elements progress toward the center, drawing closer to one another, overlapping and arching above the central elliptical plaza.



View looking SE from Indiana Avenue, the spacing of the pergola will allow for views into the site and beyond.



Three granite benches, sculpted to depict human arms and hands, surround and embrace the plaza. The three benches and hands symbolize those positive attributes of the American ethos inherent in the Peace Corps idea and Peace Corps volunteer service.



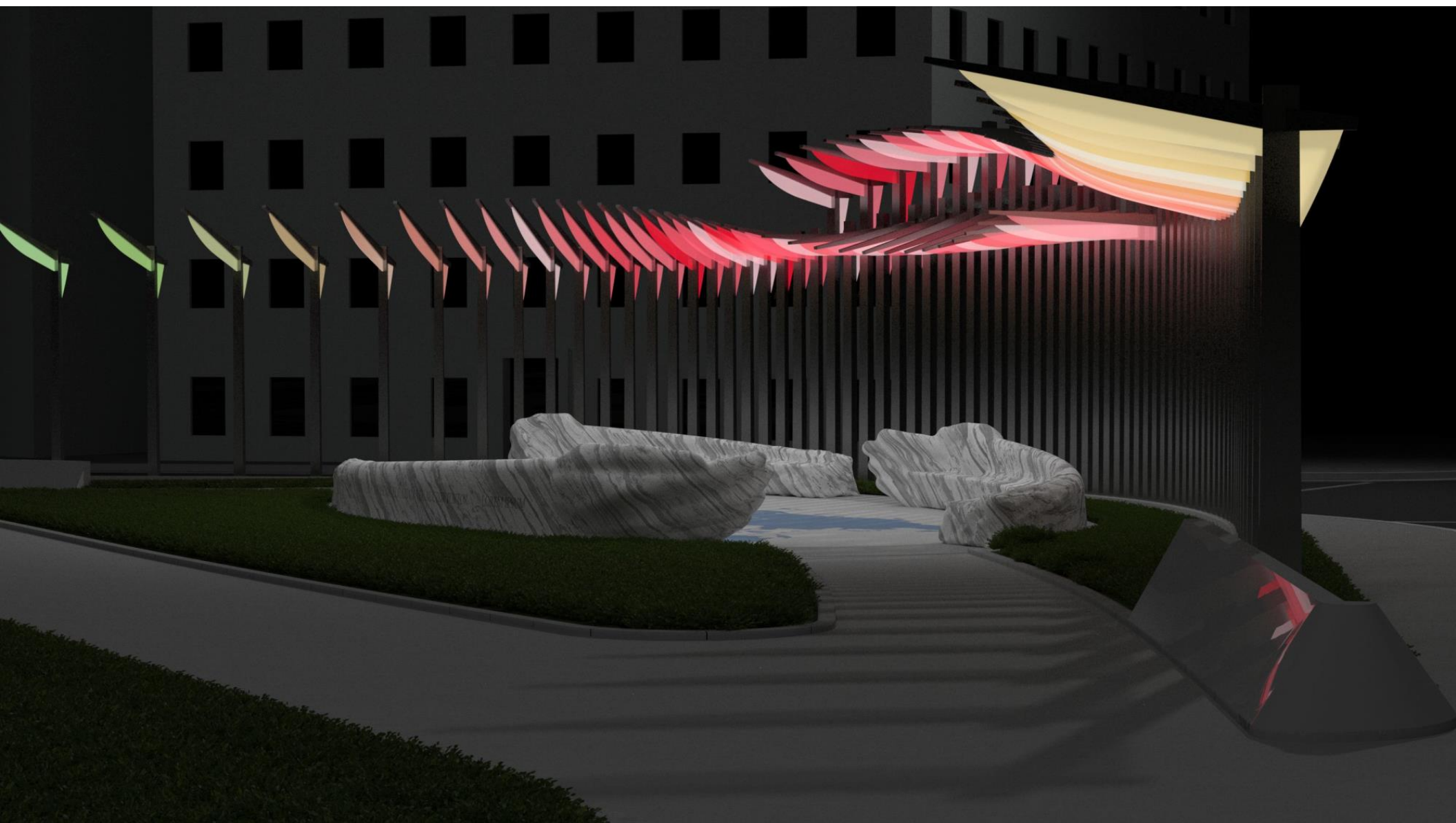
The pergola helps provide an appropriate transition in scale from the larger surrounding urban context to the more intimate experience of the Commemorative park.



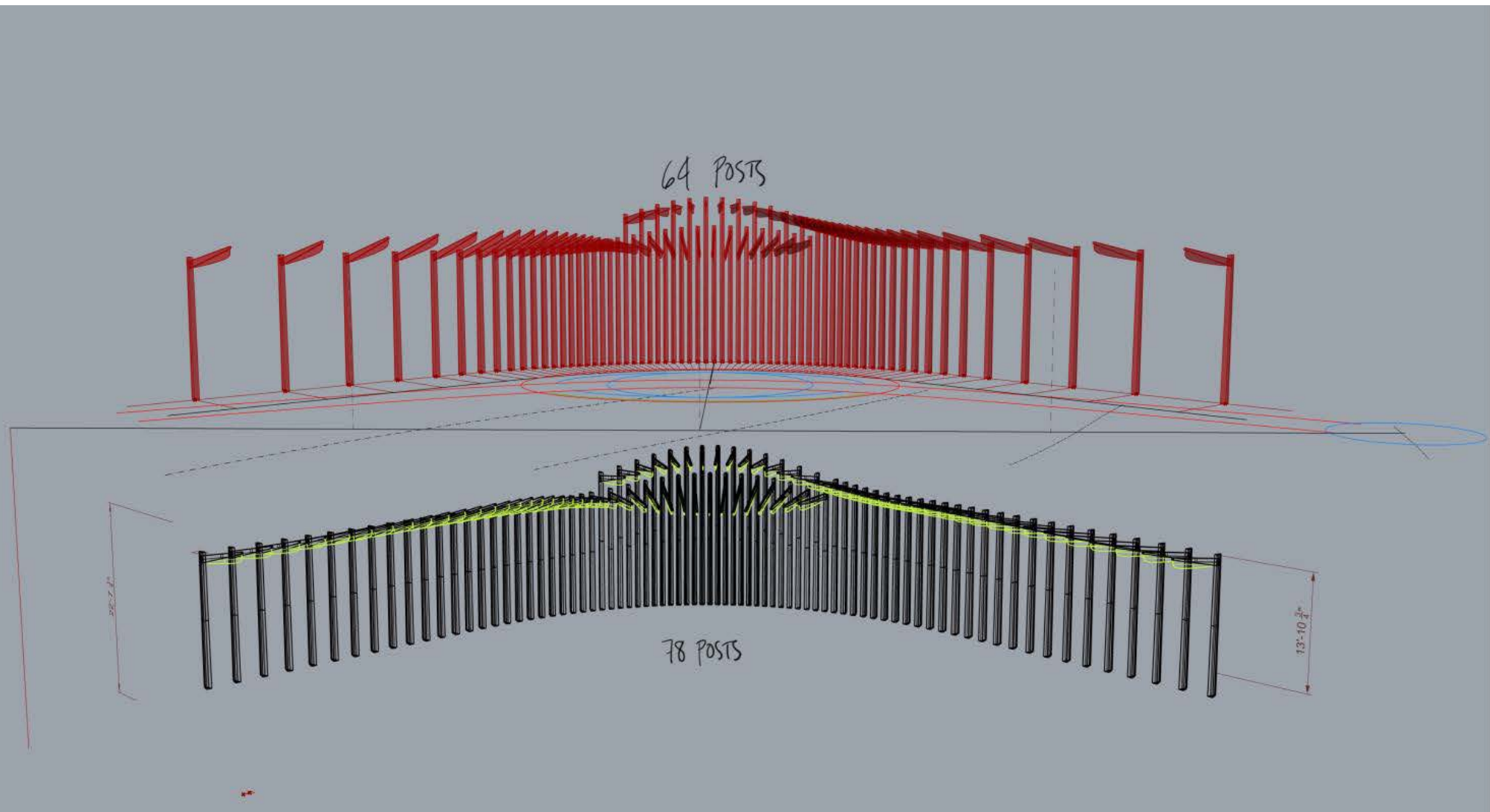
NIGHT LIGHT

The site is part of an active, well-lit urban corridor. The proposal will enrich the night time experience of the place.





This enduring, interpretive work of civic art will evoke positive emotional responses and elicit pleasant feelings about America and the American character.



Pergola - studied options

DISCUSSION

- Potential Effects

NEXT STEPS

- Receive comments by April 26, 2019 at <https://parkplanning.nps.gov/peacecorps>
- Continue design and evaluation of potential adverse effects on historic properties
- NCPC Review (May 2, 2019)
- CFA Review (TBD)
- Next 106 Meeting
- Development of Environmental Assessment