



U.S. Park Police H1 Stables Redevelopment Section 106 Consultation

April 15, 2019

Agenda

Introductions

Overview of Undertaking

Site History

Review of Draft Area of Potential Effect

Site + Building Layout Options

Discussion

Next Steps



Overview of Undertaking

Purpose

The purpose of the proposed project is to redevelop the horse stable facilities essential to the U.S. Park Police (USPP) mission as included in the approved National Mall Plan. The project is intended to improve horse living and stable conditions, provide adequate administrative space and storage, improve operational access, reduce vehicular and pedestrian conflicts, address drainage concerns, and engage the public through limited education/interpretation program.



Existing stables, paddock, and office trailer



Existing paddock behind stables and storage



Existing manure dumpster



Existing parking area accessed from Ash Road

Need

The Plan is needed to address the following concerns and ongoing issues affecting USPP's ability to carry out its mission:

- The appearance and quality of the existing facility is inconsistent with the character and quality of the National Mall* and is directly visible from Ash Road and sensitive areas of the National Mall
- The existing facility lacks adequate paddock space, stalls, and storage for horses and equipment
- The existing storage facilities for food, bedding, hay, sawdust, and manure attract pests
- Poor drainage and grading results in stormwater affecting manure and other storage areas
- The existing interior office space and parking is insufficient
- Existing access to the facility is insufficient for optimal operations and creates safety hazards along Ash Road
- The existing facilities are not energy efficient or sustainable

*Issues, goals or concerns in the National Mall Plan



Existing paddock and stables



Existing storage

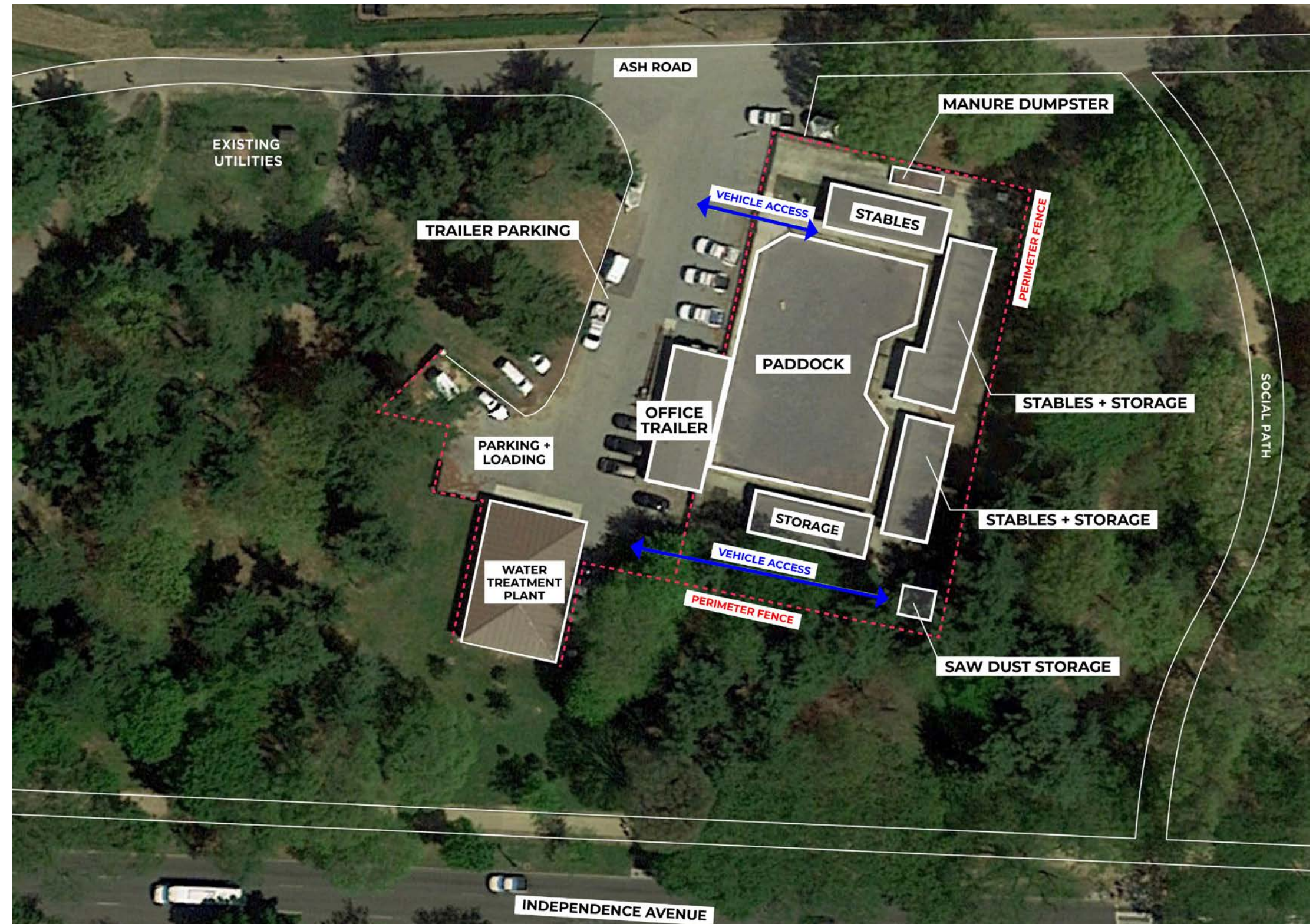
Site Context

- The 3.38-acre project area is located on NPS land on the National Mall between the Korean War Veterans Memorial and the DC War Memorial.
- The National Mall and Memorial Parks (NAMA) NPS unit administers the project area.
- The project area is part of the East and West Potomac Parks Historic District.



Project Background

- The facility was originally built as a temporary structure to support 1976 Bicentennial events.
- The facility has undergone a few refurbishments in the 1980s and in 2000 and repairs for storms, but no major renovations since it was originally built.
- The facility was determined necessary in this location based on a study in the 1990s.
- The redevelopment of the facility is identified in the National Mall Plan (2010).



EXISTING CONDITIONS



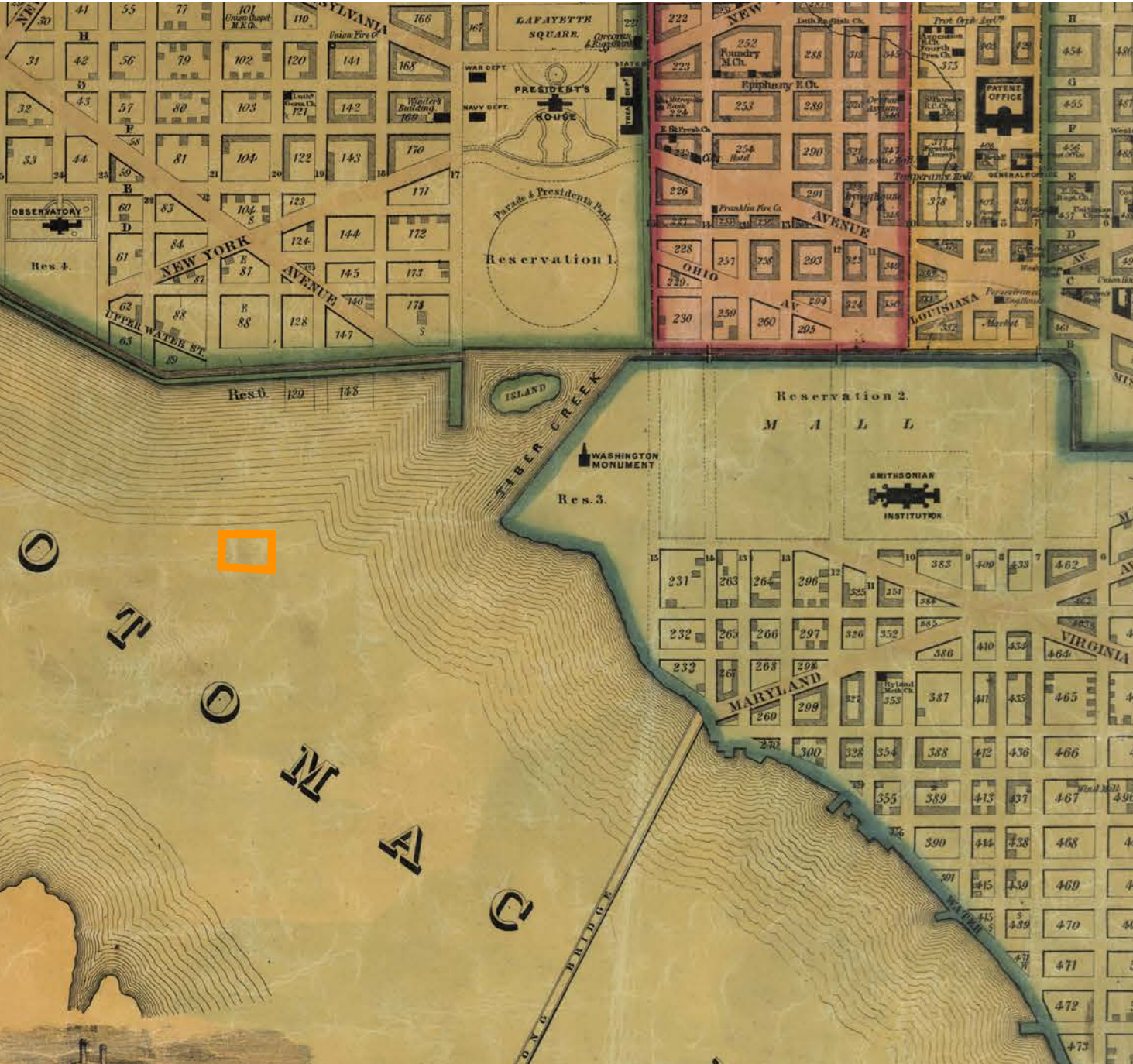
Site History

Site History

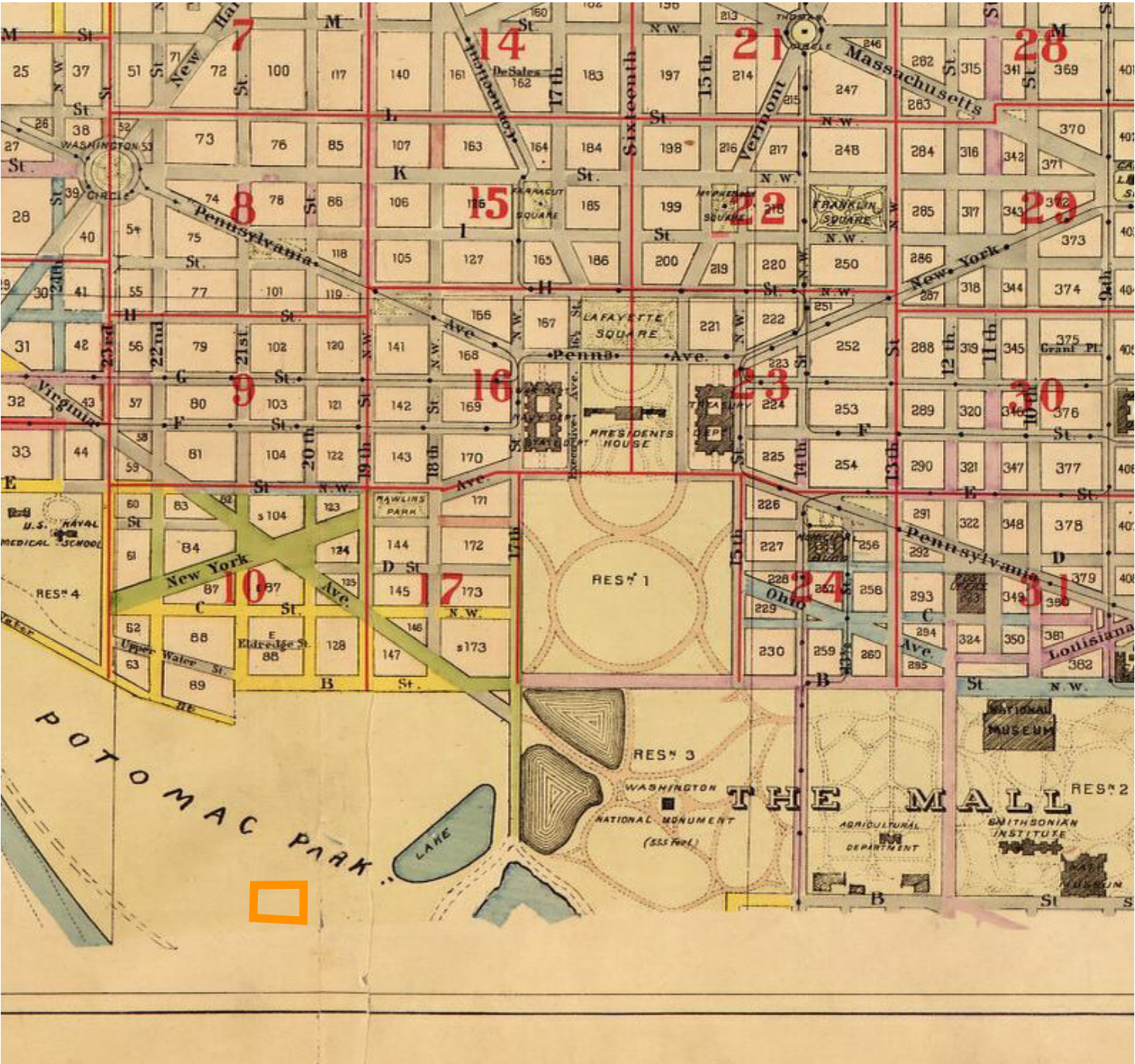


1792

Site History

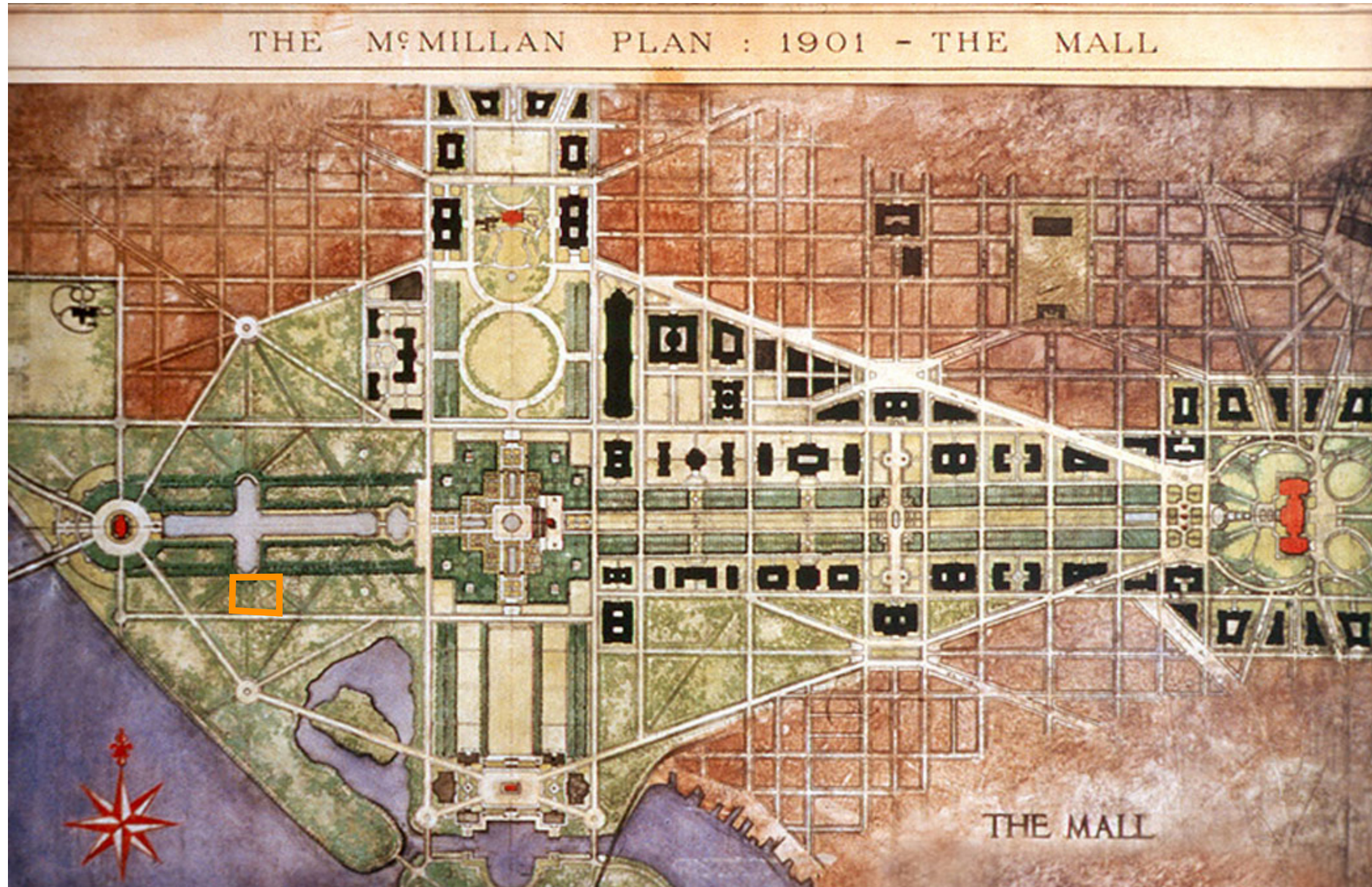


1851



1909

Site History

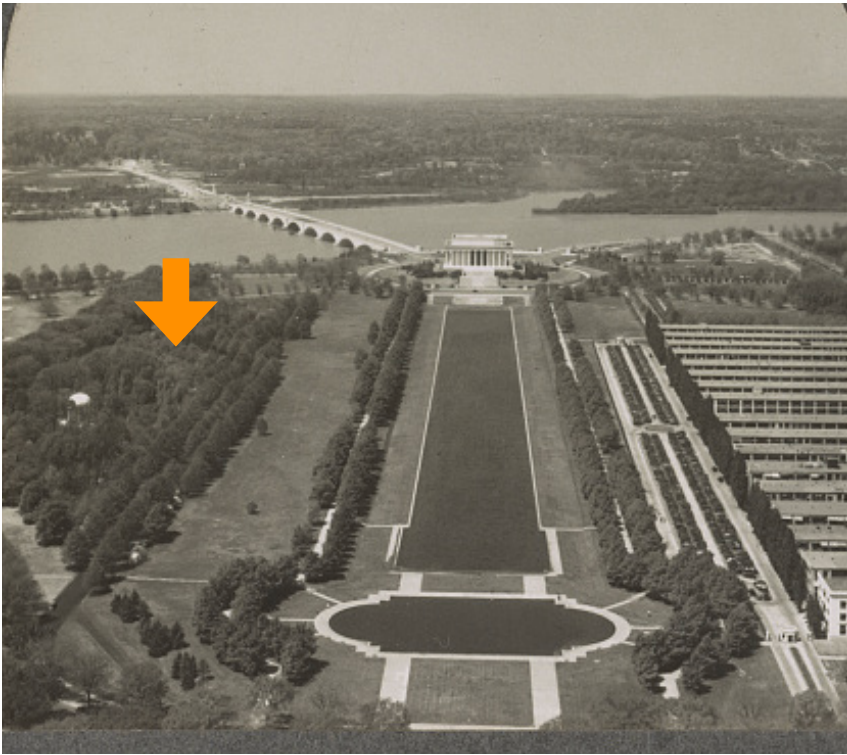


1901

Site History



1916-1919¹



1935²



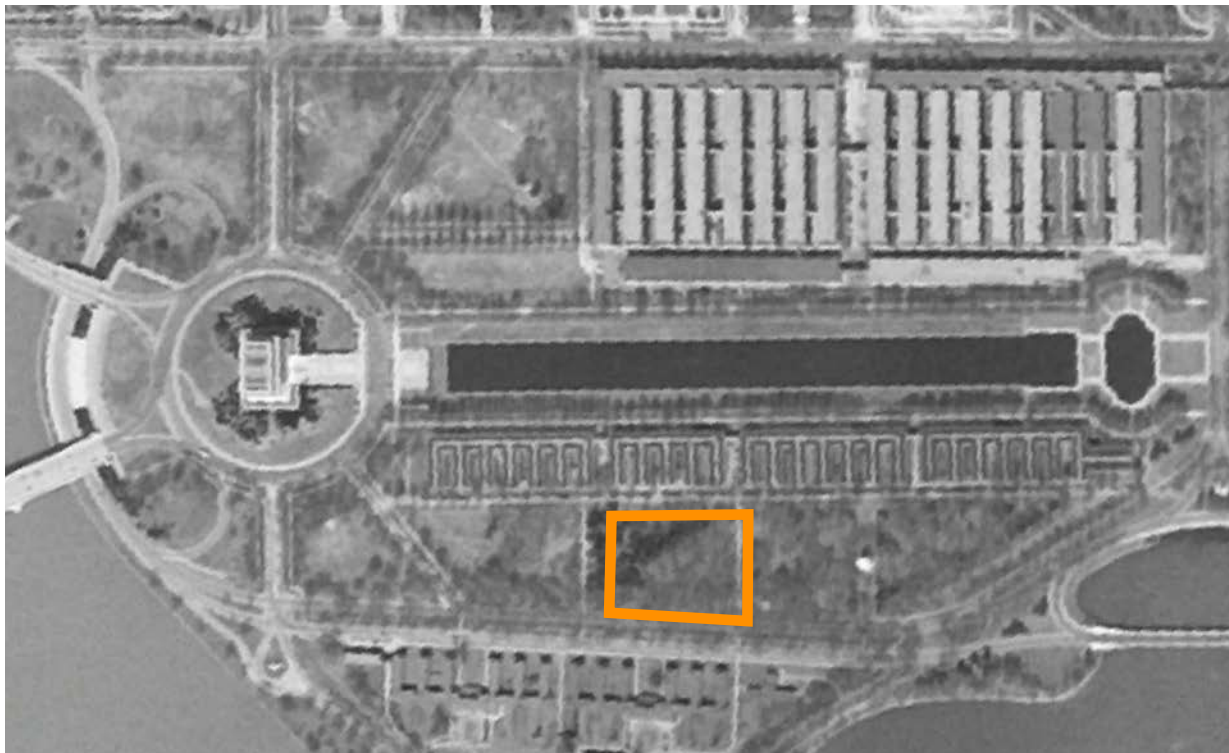
1963³

¹Harris & Ewing, photographer. *Aerial view toward Lincoln Memorial, Washington, D.C.* District of Columbia United States Washington D.C. Washington D.C, None. [Between 1916 and 1919] [Photograph] Retrieved from the Library of Congress, <https://www.loc.gov/item/2016854282/>.

²Keystone View Company. (1935) *Lincoln Memorial from Washington Monument.* Washington D.C, 1935. Meadville, Pa. ; New York, N.Y. ; Chicago, Ill. ; London, England: Keystone View Company, Manufacturers and Publishers. [Photograph] Retrieved from the Library of Congress, <https://www.loc.gov/item/2017647236/>.

³O'Halloran, T. J., photographer. (1963) *Aerial view of marchers, from the Lincoln Memorial to the Washington Monument, at the March on Washington.* Washington D.C, 1963. [Photograph] Retrieved from the Library of Congress, <https://www.loc.gov/item/2013649717/>.

Site History



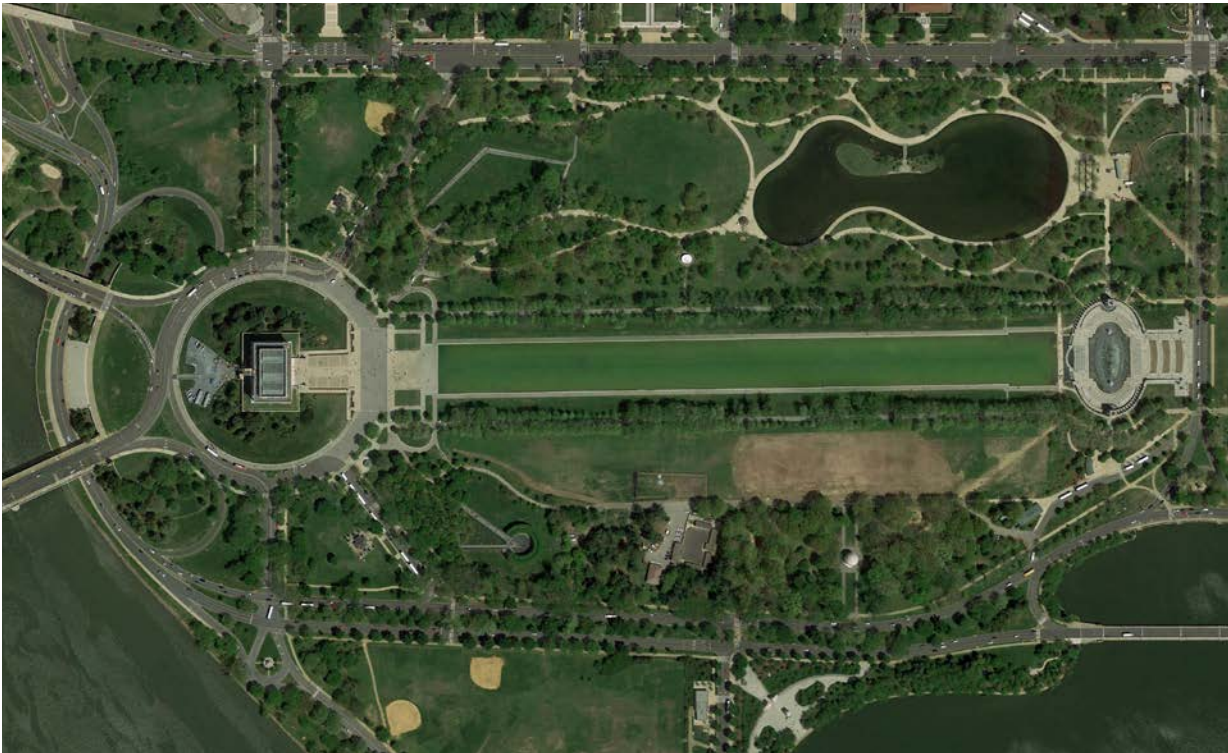
1944



1988

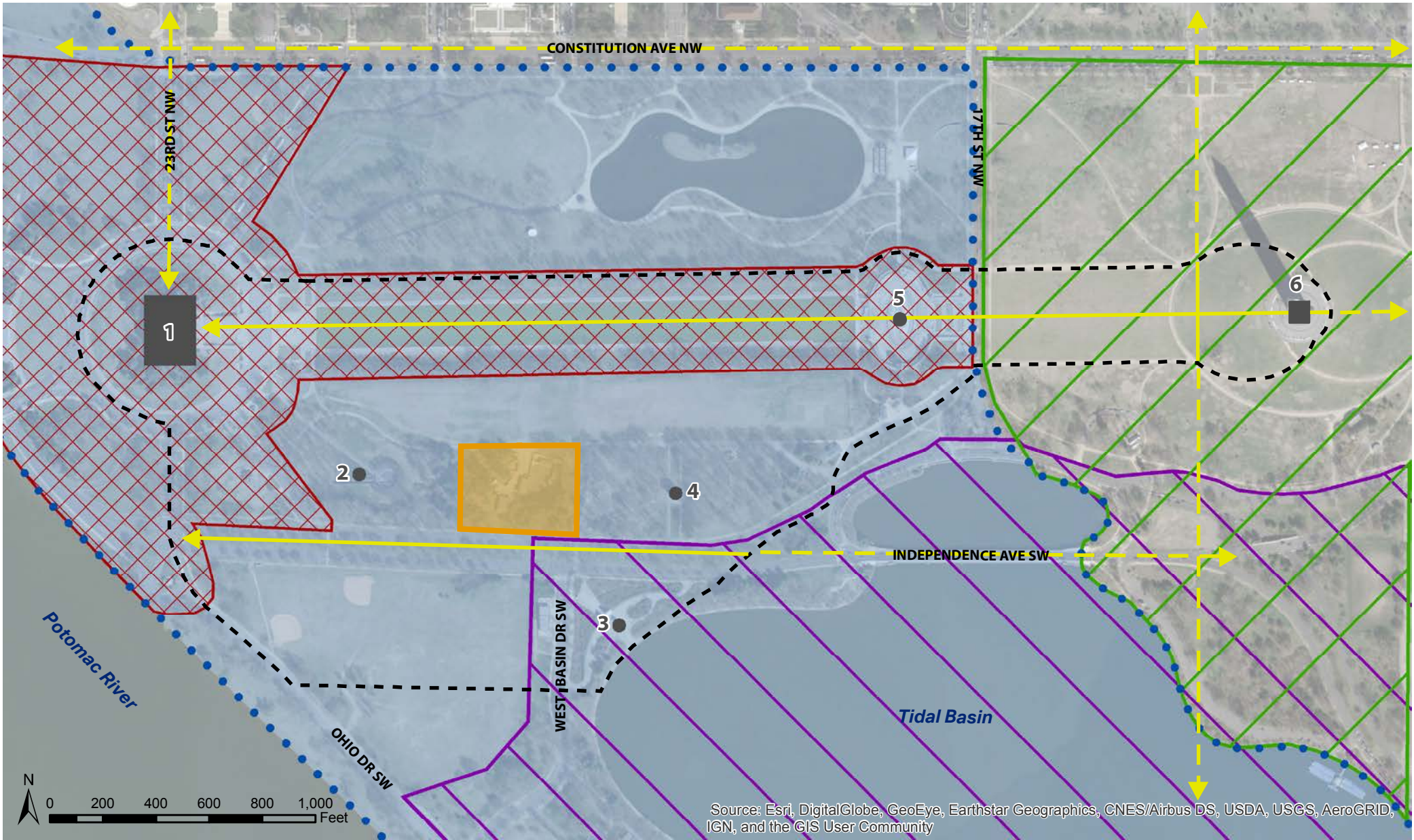


1999



2018

Draft Area of Potential Effect

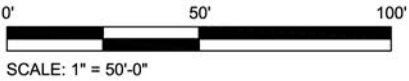
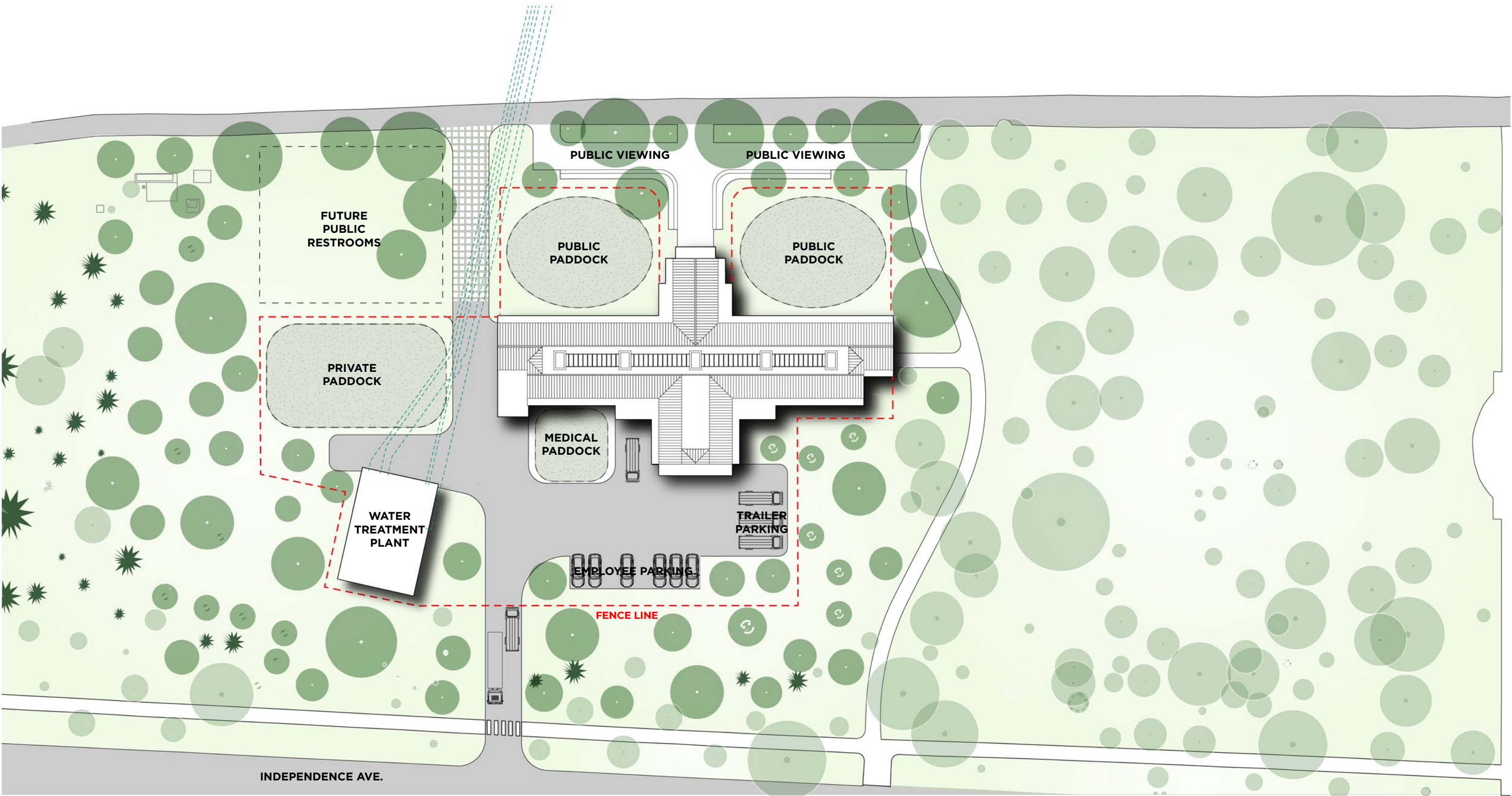


LEGEND

- | | | |
|---|---|---|
| Draft Area of Potential Effect (APE) | Washington Monument Grounds Cultural Landscape | 2 Korean War Veterans Memorial |
| Project Site | L'Enfant Plan of the City of Washington Vista in the APE | 3 Martin Luther King, Jr. Memorial |
| East and West Potomac Parks Historic District | L'Enfant Plan of the City of Washington Vista outside the APE | 4 DC War Memorial |
| Lincoln Memorial Grounds Cultural Landscape | Historic Resources in the APE | 5 World War II Memorial |
| Tidal Basin Cultural Landscape | 1 Lincoln Memorial (and Statue of Lincoln) | 6 Washington Monument |



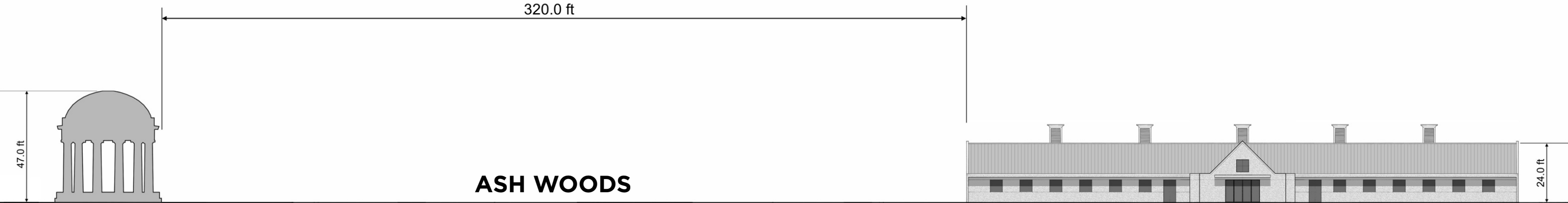
Site + Building Layout Options



OPTION 1 - SYMMETRICAL BUILDING



DC WAR MEMORIAL



ASH WOODS

OPTION 1 - SYMMETRICAL BUILDING - SCALE COMPARISON



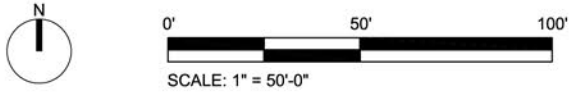
OPTION 1 - SYMMETRICAL BUILDING - ELEVATION FROM ASH ROAD

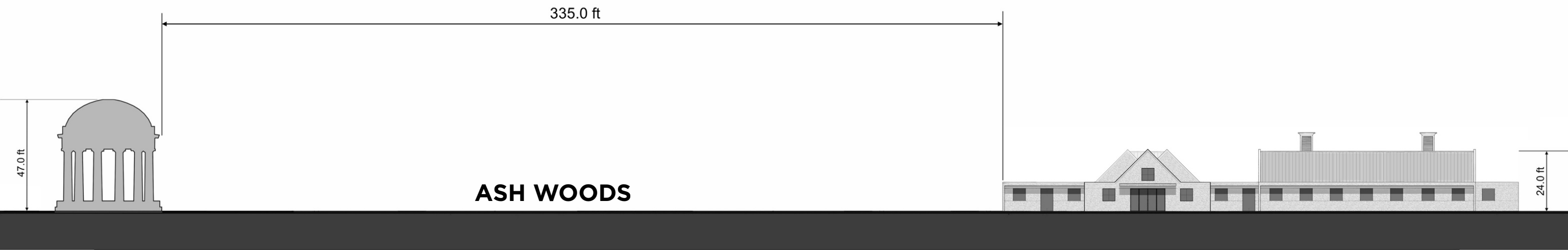


OPTION 1 - SYMMETRICAL BUILDING - ELEVATION FROM DC WAR MEMORIAL



OPTION 2 - ASYMMETRICAL BUILDING





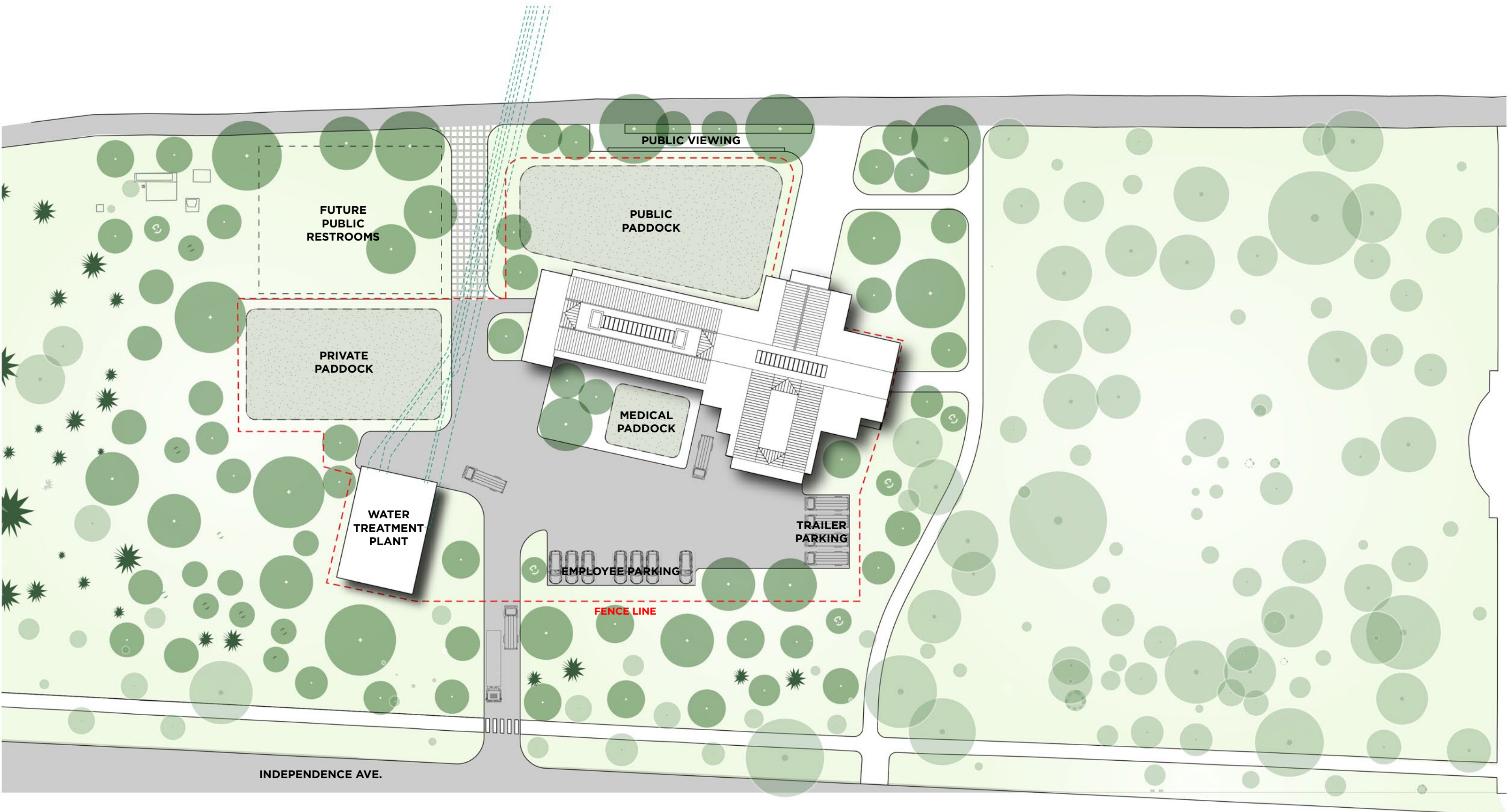
OPTION 2 - ASYMMETRICAL BUILDING - SCALE COMPARISON



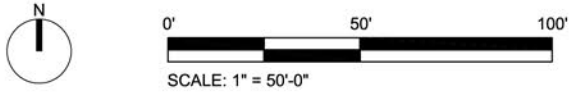
OPTION 2 - ASYMMETRICAL BUILDING - ELEVATION FROM ASH ROAD



OPTION 2 - ASYMMETRICAL BUILDING - ELEVATION FROM DC WAR MEMORIAL



OPTION 3 - ASYMMETRICAL BUILDING ROTATED





ASH WOODS



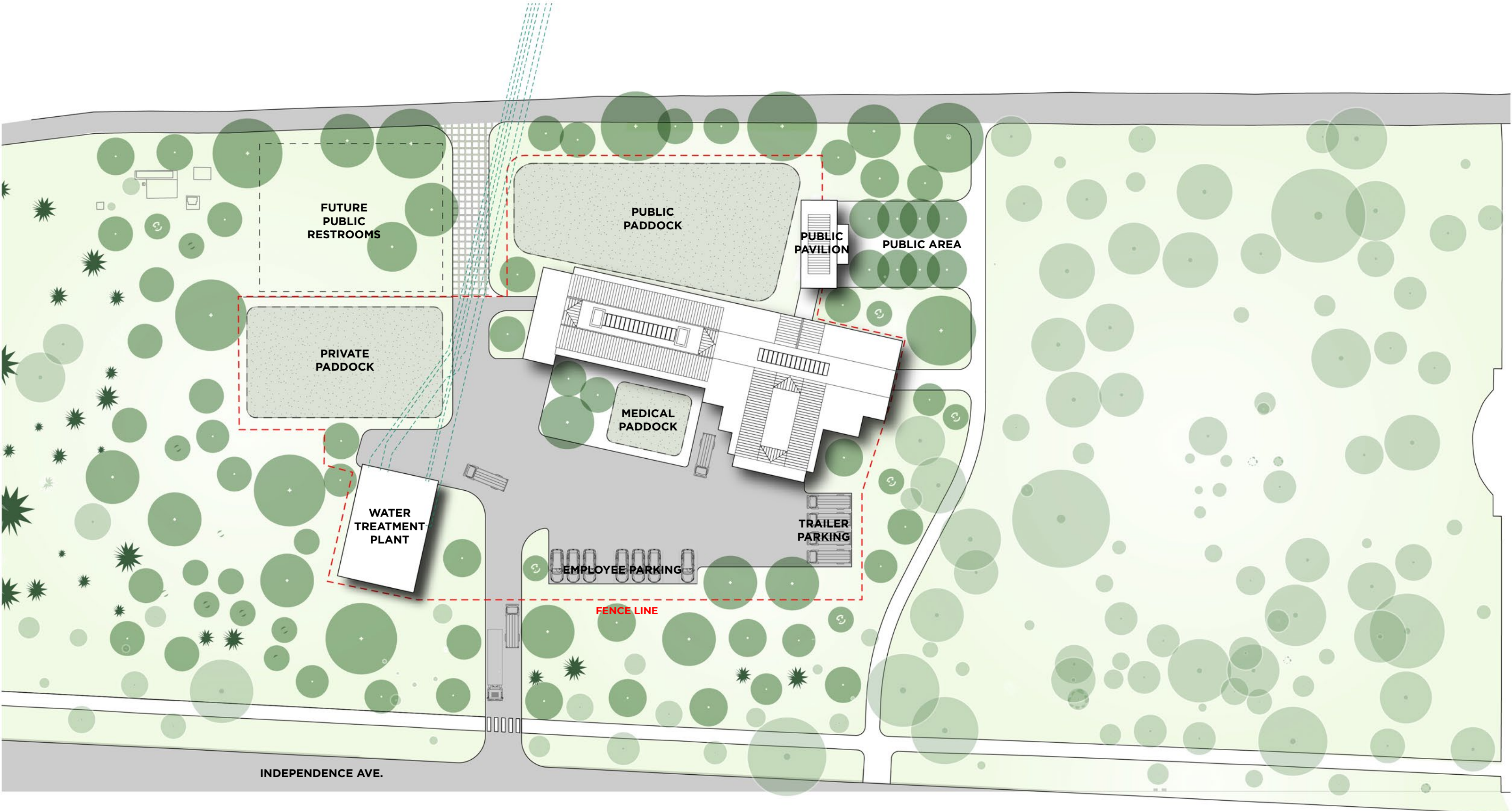
OPTION 3 - ASYMMETRICAL BUILDING ROTATED - SCALE COMPARISON



OPTION 3 - ASYMMETRICAL BUILDING ROTATED - ELEVATION FROM ASH ROAD



OPTION 3 - ASYMMETRICAL BUILDING ROTATED - ELEVATION FROM DC WAR MEMORIAL



OPTION 4 - ASYMMETRICAL DETACHED BUILDING



OPTION 4 - ASYMMETRICAL DETACHED BUILDING - SCALE COMPARISON



OPTION 4 - ASYMMETRICAL DETACHED BUILDING - ELEVATION FROM ASH ROAD



OPTION 4 - ASYMMETRICAL DETACHED BUILDING - ELEVATION FROM DC WAR MEMORIAL

Discussion

- Potential effects
- Identified minimization measures
- Potential mitigation measures

Next Steps

- Receive comments by April 26, 2019 at <https://parkplanning.nps.gov/H1Stables>
- Continue design and evaluation of potential adverse effects on historic properties
- Next 106 meeting (TBD)
- Development of Environmental Assessment