

U.S. Park Police H1 Stables Redevelopment Environmental Assessment

Trust for the National Mall - Public Scoping Meeting April 17, 2019



Welcome

Public Scoping Meeting

U.S. Park Police H1 Stables Redevelopment Environmental Assessment

- The purpose of the meeting is to present the site and building layout options and engage the public to identify issues, concerns, and ideas.
- The site and building layout options will be further developed and refined with ideas that are collected during the public comment period. We want your input regarding the site and building layout options.

U.S. Park Police H1 Stables Redevelopment Environmental Assessment

Trust for the National Mall - Public Scoping Meeting April 17, 2019



Purpose

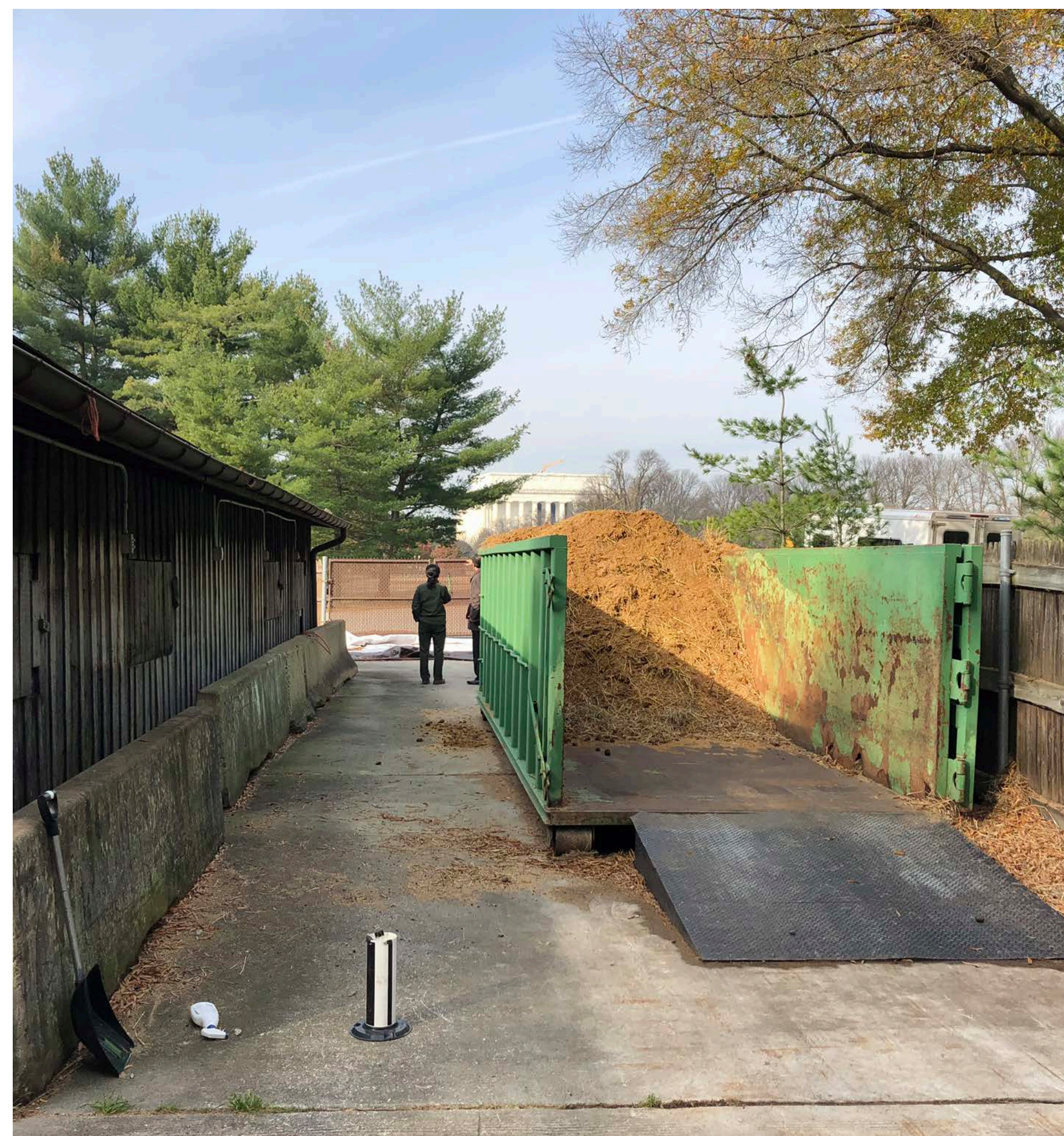
The purpose of the proposed project is to redevelop the horse stable facilities essential to the U.S. Park Police (USPP) mission as included in the approved National Mall Plan. The project is intended to improve horse living and stable conditions, provide adequate administrative space and storage, improve operational access, reduce vehicular and pedestrian conflicts, address drainage concerns, and engage the public through limited education/interpretation program.



Existing stables, paddock, and office trailer



Existing paddock behind stables and storage



Existing manure dumpster



Existing parking area accessed from Ash Road

U.S. Park Police H1 Stables Redevelopment Environmental Assessment

Trust for the National Mall - Public Scoping Meeting April 17, 2019



Need

The Plan is needed to address the following concerns and ongoing issues affecting USPP's ability to carry out its mission:

- The appearance and quality of the existing facility is inconsistent with the character and quality of the National Mall* and is directly visible from Ash Road and sensitive areas of the National Mall
- The existing facility lacks adequate paddock space, stalls, and storage for horses and equipment
- The existing storage facilities for food, bedding, hay, sawdust, and manure attract pests
- Poor drainage and grading results in stormwater affecting manure and other storage areas
- The existing interior office space and parking is insufficient
- Existing access to the facility is insufficient for optimal operations and creates safety hazards along Ash Road
- The existing facilities are not energy efficient or sustainable

*Issues, goals or concerns in the National Mall Plan



Existing paddock and stables



Existing storage



What Issues will the EA Address?

- Ash Road currently provides vehicle, pedestrian, bicycle, scooter, and Segway circulation without defined spaces for these different user groups resulting in user conflicts and safety concerns
- Vehicle parking is currently unstructured
- The proposed project could provide the public with educational and interpretive exhibits
- The replacement and/or rehabilitation of the drainage system and grade changes could improve stormwater runoff control
- The proposed project could introduce or change elements of documented historic resources and cultural landscapes



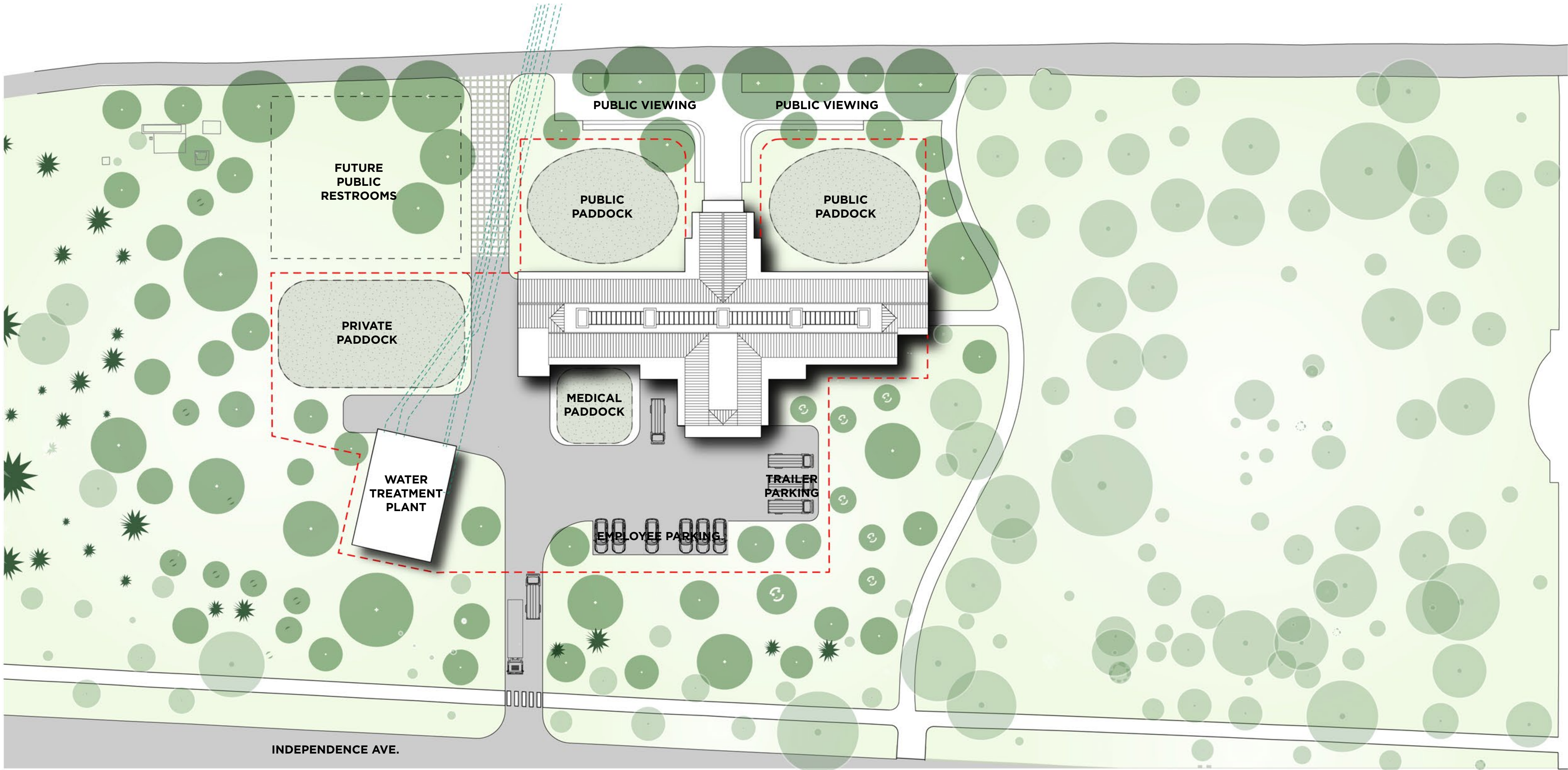
Ash Road looking east



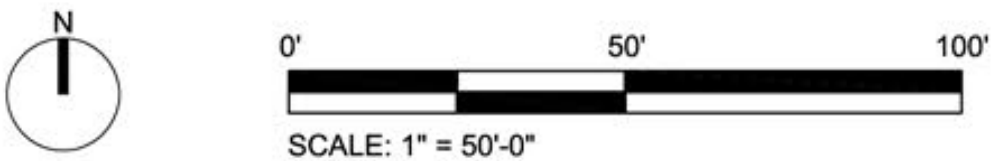
Existing saw dust storage



Option 1 - Symmetrical Building



OVERVIEW



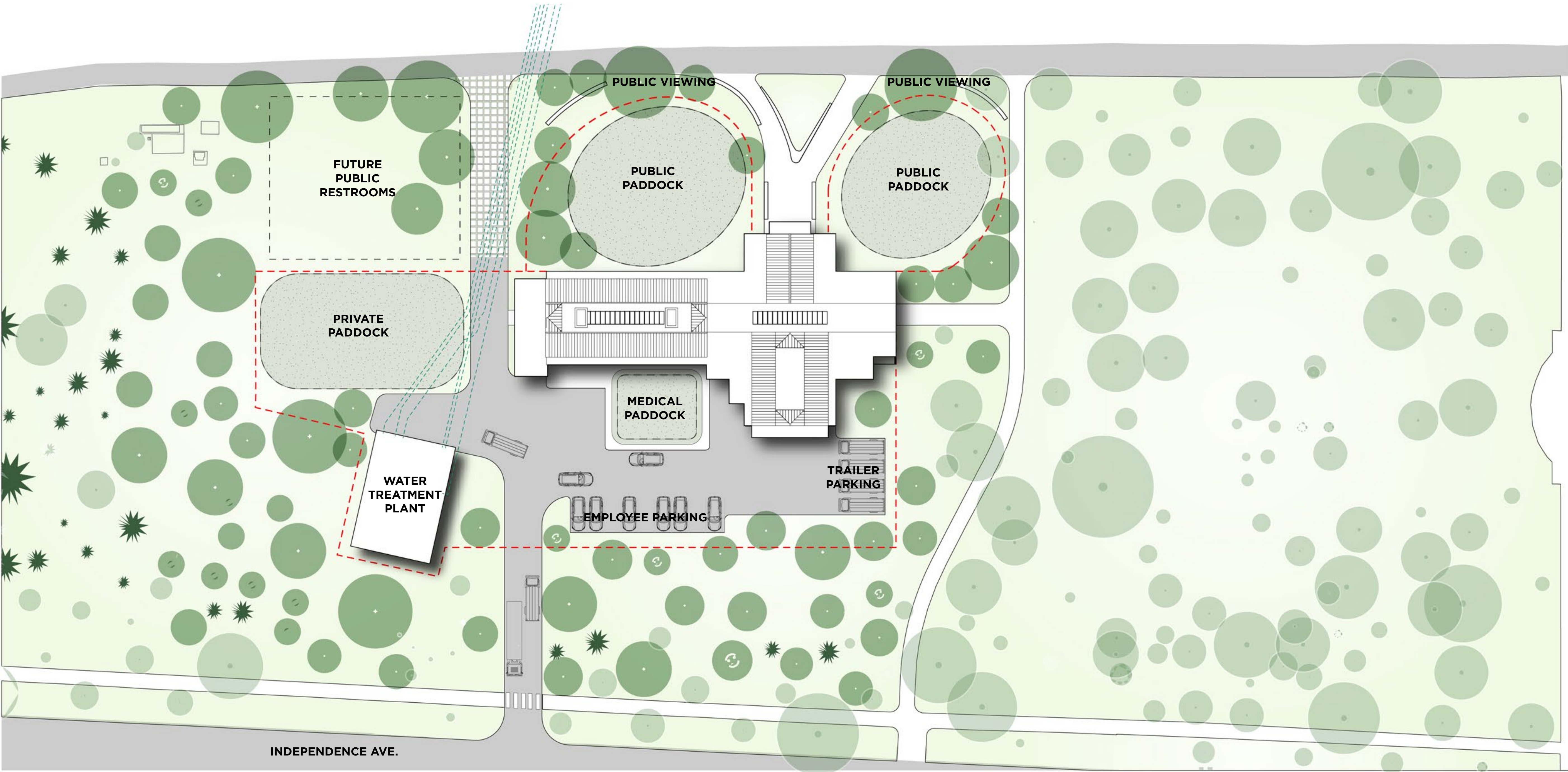
ELEVATION FROM ASH ROAD



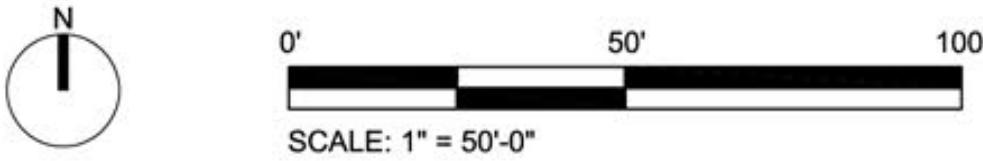
ELEVATION FROM DC WAR MEMORIAL



Option 2 - Asymmetrical Building



OVERVIEW



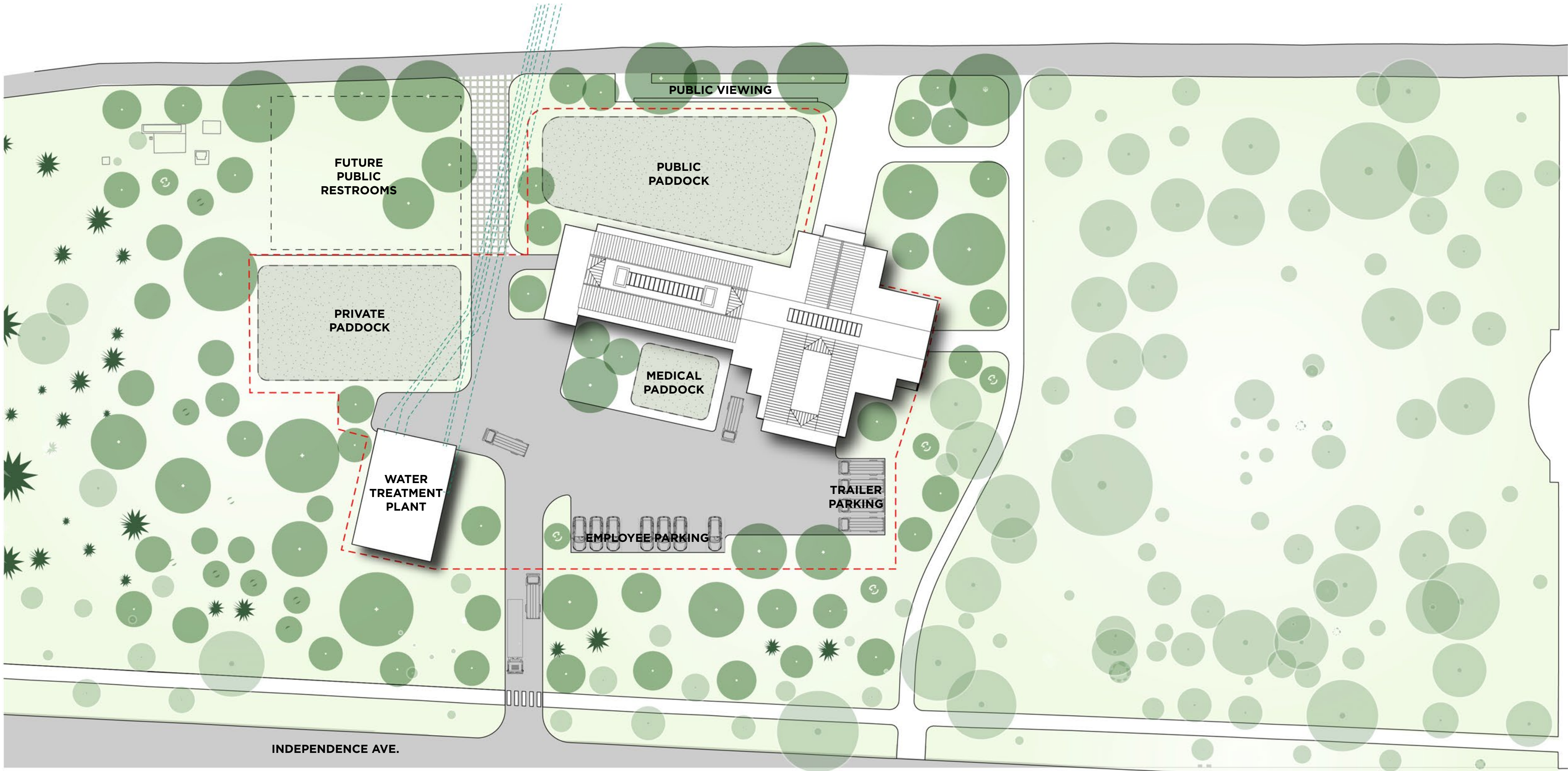
ELEVATION FROM ASH ROAD



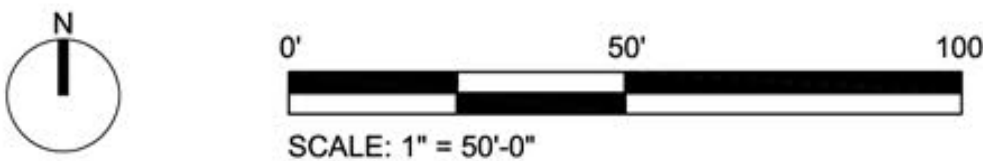
ELEVATION FROM DC WAR MEMORIAL



Option 3 - Asymmetrical Building Rotated



OVERVIEW



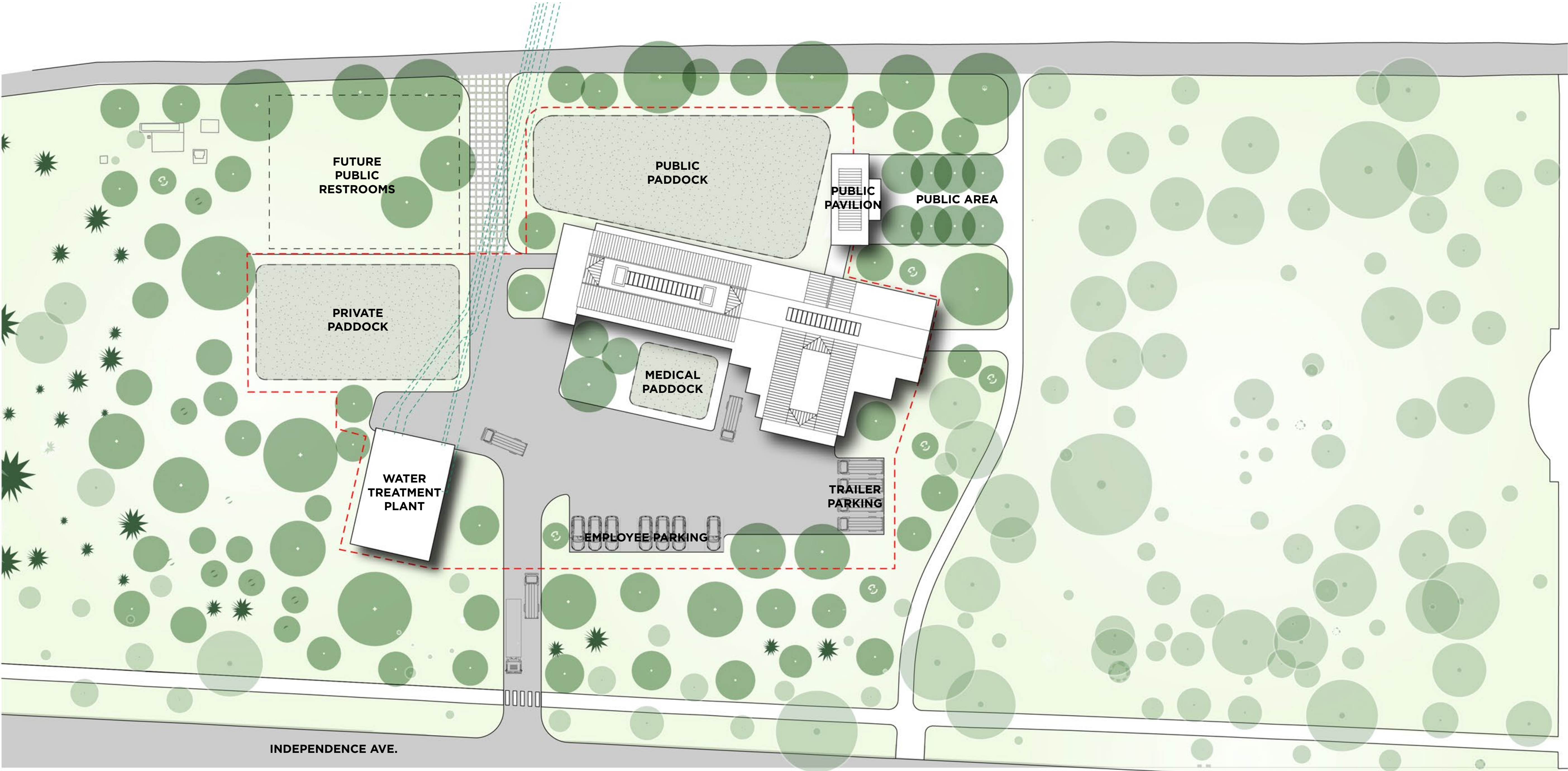
ELEVATION FROM ASH ROAD



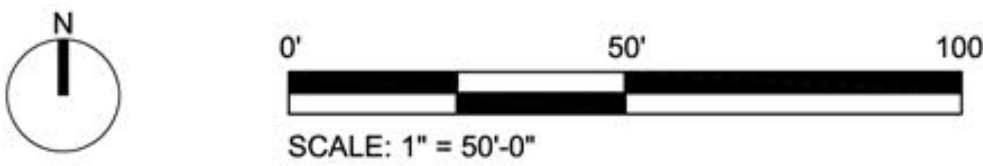
ELEVATION FROM DC WAR MEMORIAL



Option 4 - Asymmetrical Detached Building



OVERVIEW



ELEVATION FROM ASH ROAD



ELEVATION FROM DC WAR MEMORIAL