

Wawona Wastewater Treatment System Rehabilitation Project & Environmental Assessment

Wawona Town
Planning Advisory Committee
Meeting
11/16/2018



Wawona Wastewater Treatment System Rehabilitation Project & Environmental Assessment



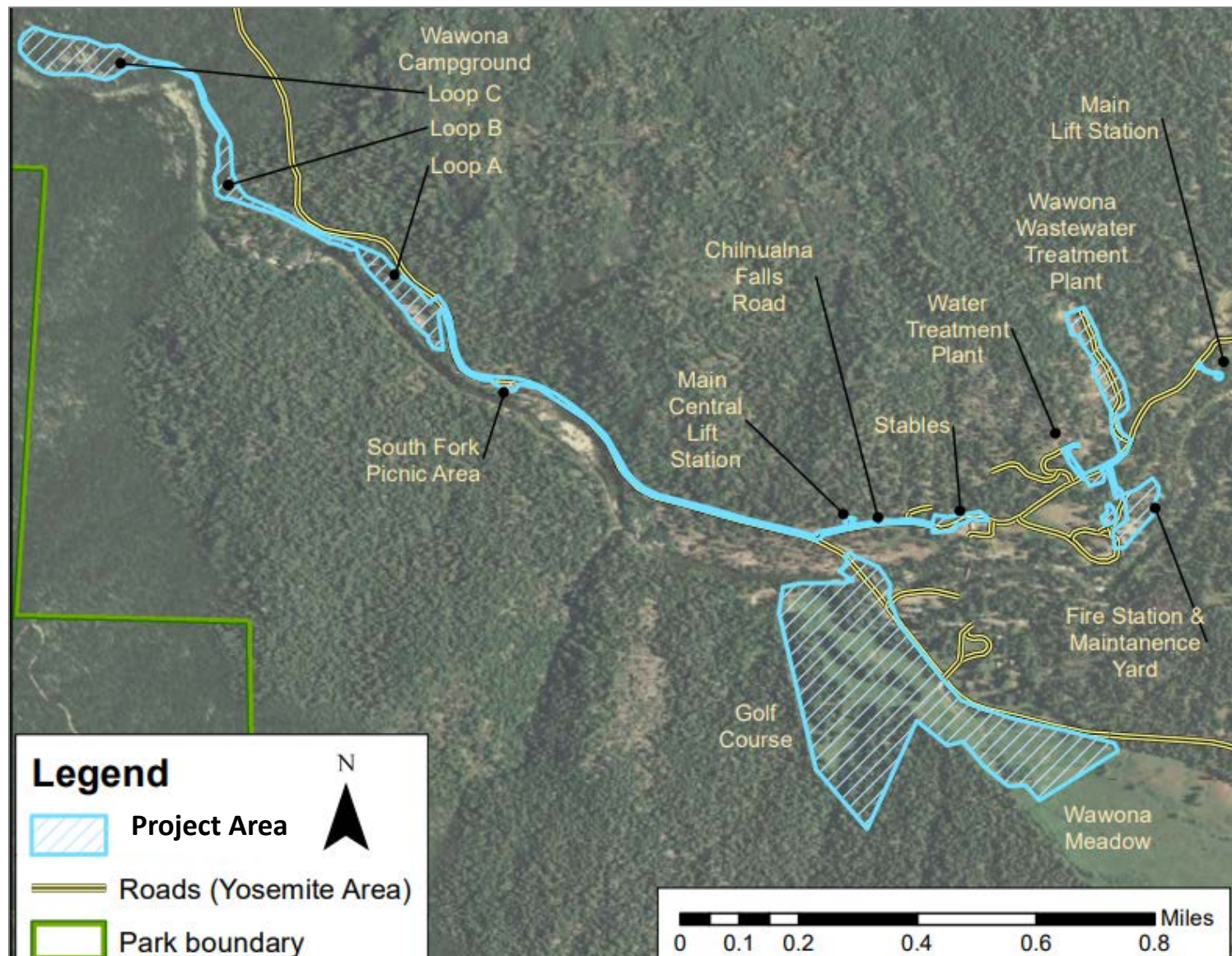
Introductions

- Garrett Chun, Project Manager (NPS)
- Madelyn Ruffner, Compliance Branch Chief (NPS)
- Ninette Daniele, Compliance Specialist (NPS)
- Joe Llewellyn, Realty Officer (NPS)

Agenda

- Introduction
- Project Purpose
- Environmental Assessment & Proposed Actions
- Public Comment Period
- Project Schedule and Next Steps
- Questions or Comments

Wawona Wastewater Treatment System Rehabilitation Project & Environmental Assessment





Purpose and Need

- Improve visitor experience and address deferred maintenance
- Improve efficiency at the wastewater treatment plant; create scalable operations with more precise controls
- Increase sewage treatment capacity at the wastewater treatment plant
- Increase effluent disposal capacity at the golf course to meet future operational permit requirements
- Implement actions prescribed in the *Merced Wild and Scenic River Comprehensive Management Plan EIS (2014)*
- Modernize critical utility infrastructure
- Address employee safety concerns



Environmental Assessment

- Analysis of environmental impacts posed by proposed actions for compliance with the National Environmental Policy Act
- Impact topics include: biological resources, cultural resources, water resources, and visitor experience, health, and safety
- The EA analyzes two action alternatives & a no action alternative

Background

- Three public meetings – May/ June 2017
- Formal public scoping period – April to May 2017
- Comments received focused on plant capacity, the effluent spray field arrangement and use, and odor reduction.
 - Interest was also expressed in a restroom at Flat Rock swimming area (noted, but beyond project scope)



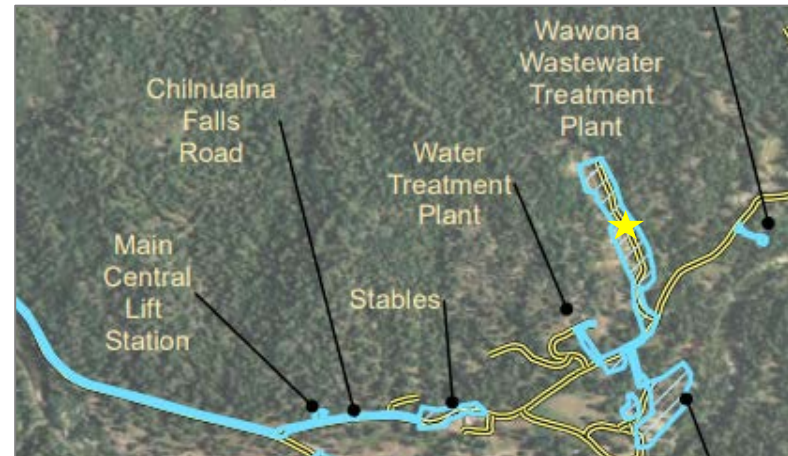
Environmental Assessment

Preferred Alternative (Alternative 2):

Increase treatment capacity at the Wawona Wastewater Treatment Plant to accommodate flows from:



- Wawona Campground
- South Fork Picnic Area (eventually)
- Buildout of undeveloped parcels & unserved parcels in Wawona





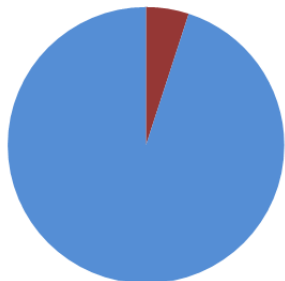
Environmental Assessment

Preferred Alternative (Alternative 2):

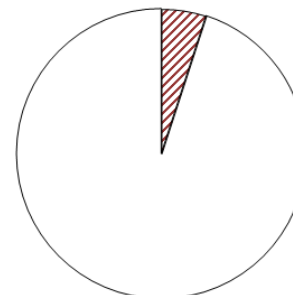
Other Upgrades at the Wastewater Treatment Plant:

- New solids handling facilities – reduced hauling of solids

Current:



Proposed:





Environmental Assessment

Preferred Alternative (Alternative 2):

Other Upgrades at the Wastewater Treatment Plant:

- Address water intrusion – address staff safety hazard
- Upgrade electrical & control system – increase efficiency & scalability
- Increase staff operations space & improve HVAC systems



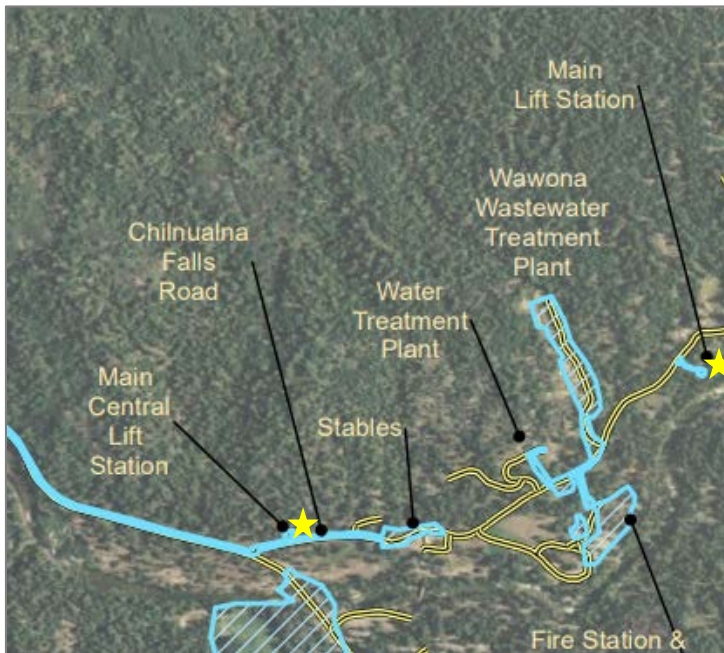


Environmental Assessment

Preferred Alternative (Alternative 2):

Improvements to the lift stations:

- Upgrade the main central lift station and upgrade the main lift station – increase system capacity



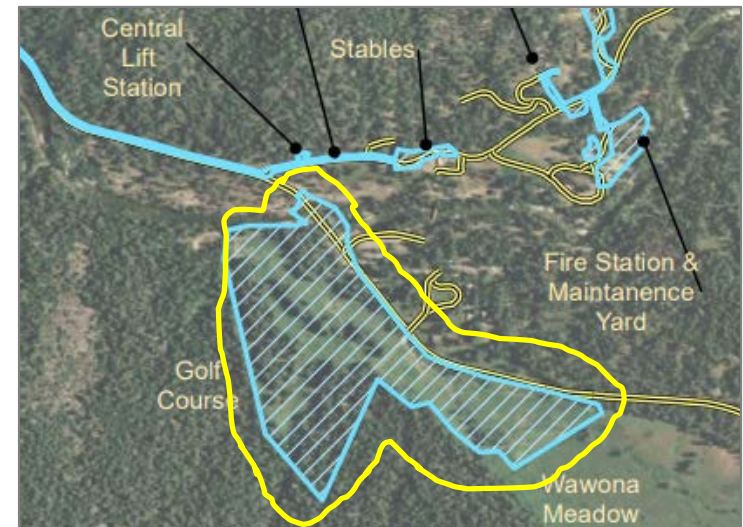


Environmental Assessment

Preferred Alternative (Alternative 2):

Improvements to the golf course effluent disposal system:

- Replace and upgrade spray field components – increased system control and improved turf conditions
- Construct disposal trenches in fairway 7– expand land-based effluent disposal capacity in winter and meet permit requirements



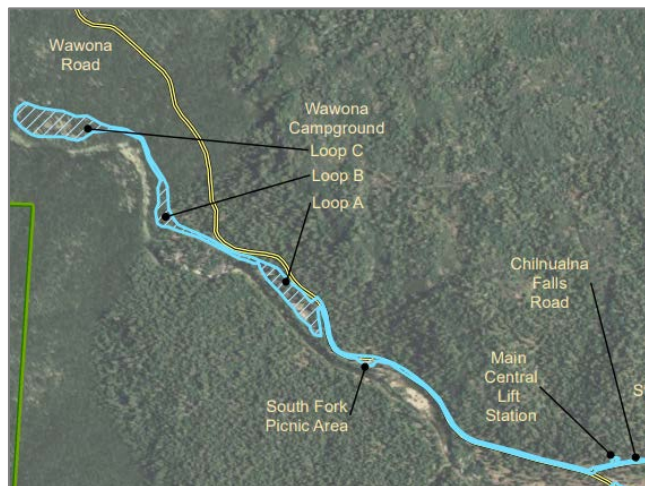


Environmental Assessment

Preferred Alternative (Alternative 2):

Connect Wawona Campground to central sewage treatment at the Wawona Wastewater Plant: **MRP Implementation*

- Install sewage conveyance infrastructure in campground
- Install sewer force main and other utilities under Wawona Rd.
- Decommission 6 septic systems in Wawona Campground



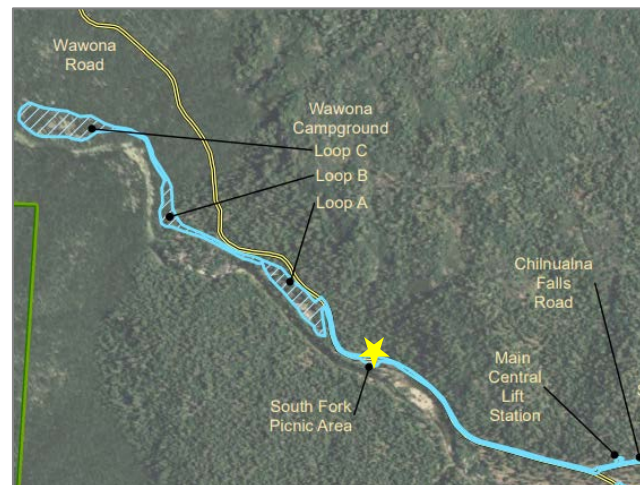


Environmental Assessment

Preferred Alternative (Alternative 2):

Eventually replace the vault toilet at South Fork Picnic Area with a double-stall flushing toilet restroom (pending funding availability)

- Improve visitor experience
- Decrease sewage handling near river and overland hauling





Environmental Assessment

Summary of Actions Proposed Under the Preferred Alternative (Alternative 2):

- Safety, efficiency, and solids handling upgrades to the Wastewater Treatment Plant
- Improvements to the golf course spray irrigation system
- Construction of effluent disposal trenches at the golf course
- Upgrades to 2 lift stations along Chilnualna Falls Rd.
- Installation of a sewer force main, water line replacement, and communications utilities under Wawona Road
- Installation of sewage conveyance infrastructure and decommissioning septic systems at Wawona Campground
- Eventual replacement of the vault toilet at the South Fork Picnic Area with a 2-stall flushing toilet restroom



Environmental Assessment

Actions Proposed Under the Alternative 3 (not preferred):

- Altered lift station configuration for sewage conveyance
- Sub-surface drip lines, instead of trenches, at the golf course

The No Action Alternative (Alternative 1):

- Would be infeasible for meeting permitting requirements
- Continued/increased overland sewage hauling
- Continued compromise of Wild and Scenic river values
- Sewage flows from Wawona community buildout and Wawona campground would not be accommodated
- Mounting maintenance costs and continued deterioration of critical infrastructure

Wawona Wastewater Treatment System Rehabilitation Project & Environmental Assessment



Public Comment:

Your ideas, concerns, and suggestions are important to us!

- Please share your written comments by **December 9, 2018**, via one of the following methods:
 - Online through the Planning, Environment, and Public Comment (PEPC) website (preferred method) at <http://parkplanning.nps.gov/WWTP>
 - Mail your comments to:

*Superintendent, Yosemite National Park
Attn: Wawona Wastewater Treatment System Project
P.O. Box 577,
Yosemite, CA 95389*

Wawona Wastewater Treatment System Rehabilitation Project & Environmental Assessment



Commenting online through PEPC:

1. Click “Open for Comment” on the left side

https://parkplanning.nps.gov/projectHome.cfm?projectID=71677

National Park Service

Find a Park Discover History Explore Nature Get Involved Working With Communities Teach

PEPC Planning, Environment & Public Comment

PEPC Home Documents by Park Policy/Links Park Planning

PROJECT LINKS

- Project Home
- Plan Process
- Meeting Notices
- Links
- Document List
- Open For Comment (1)**

Wawona Wastewater Treatment System Rehabilitation Environmental Assessment

Yosemite National Park » Wawona Wastewater Treatment System Rehabilitation Environmental Assessment » Document List

The National Park Service plans to improve visitor facilities, address deferred maintenance, and increase efficiency and capacity in the Wawona Wastewater Treatment System. The environmental assessment for this project has been released and the comment period is open until December 9, 2018. Click the "comment" link on the left side of the screen to view the document and comment.

A comment period for this project closes Dec 09, 2018: 24 Days, 1 Hours, 59 Min.

2. Select the link to the Wawona Wastewater Treatment System Rehabilitation Project Environmental Assessment

https://parkplanning.nps.gov/documentsOpenForReview.cfm?parkID=347&projectID=71677

National Park Service

Find a Park Discover History Explore Nature Get Involved Working With Communities Teach

PEPC Planning, Environment & Public Comment

PEPC Home Documents by Park Policy/Links Park Planning

PROJECT LINKS

- Project Home
- Plan Process
- Meeting Notices
- Links
- Document List
- Open For Comment (1)**

Documents Open For Review

Yosemite National Park » Wawona Wastewater Treatment System Rehabilitation Environmental Assessment

The following Documents are currently open for review.

Select a document to review and comment:

- Wawona Wastewater Treatment System Rehabilitation Environmental Assessment**

A comment period for this project closes Dec 09, 2018: 24 Days, 1 Hours, 55 Min.

3. Click the green “comment now” button on the left side of the screen and submit your comment!

Comment Now »

Comment period closes Dec 09, 2018



Schedule and Next Steps:

- Public Comment Period Closes: December 9, 2018
- Decision Document: January 2019
- Construction anticipated to start: Fall 2019
 - Construction impacts to traffic along Wawona and Chilnualna Falls Roads
 - Golf course closure for approximately one year
 - Temporary campground closures
 - No interruption of sewage treatment services
- Aiming for project completion by Winter 2020
- New double stall flush toilet at South Fork Picnic Area as part of a future project (pending funding availability)



Questions?

Email: yose_planning@nps.gov

Submit comments by December 9, 2018:

- Online (preferred) at: <http://parkplanning.nps.gov/WWTP>
- Mail your comments (postmarked by 12/9/18) to:
Superintendent, Yosemite National Park
Attn: Wawona Wastewater Treatment System Project
P.O. Box 577,
Yosemite, CA 95389