

Grand Canyon National Park
Arizona



Transcanyon Water Distribution Pipeline Environmental Assessment

Transcanyon Water Distribution Pipeline Environmental Assessment

October 2018



Transcanyon Water Distribution Pipeline Environmental Assessment

Overview of this Presentation

- Project Purpose and Need
- Project Background
- The Planning Process and the National Environmental Policy Act (NEPA)
- Alternatives
- Impact Topics
- How to Comment



Transcanyon Water Distribution Pipeline Environmental Assessment

Project Purpose and Need

The purpose of the proposed project is to provide a reliable water delivery system to meet Park water supply needs for a project lifespan of approximately 50 years.





Transcanyon Water Distribution Pipeline Environmental Assessment

Project Purpose and Need

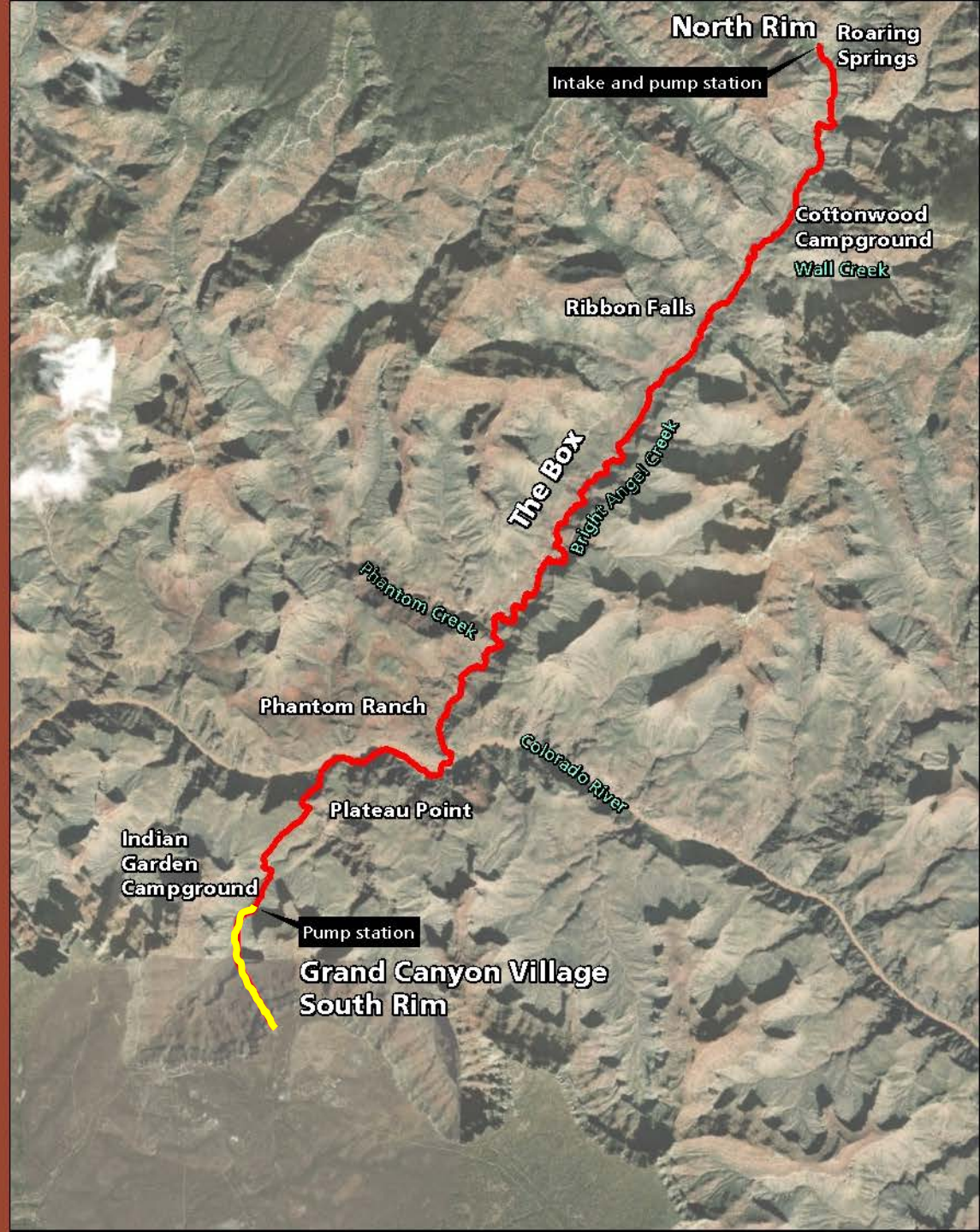
The project is needed because the Pipeline:

- Is beyond its useful life
- Experiences frequent failures
- Requires continual maintenance to repair leaks

Project Area

Existing Transcanyon
Water Distribution
Pipeline

Project Vicinity



Transcanyon Water Distribution Pipeline Environmental Assessment



Photos of Exposed Pipeline



Transcanyon Water Distribution Pipeline Environmental Assessment

Project Background

- Starting point and water source for the 12.5-mile Pipeline is Roaring Springs below the North Rim
- Water is conveyed by gravity from Roaring Springs to Indian Garden
- From Indian Garden, water is pumped by a lift station to the South Rim
- Construction of the Pipeline was initiated in 1965 and completed in 1970



Transcanyon Water Distribution Pipeline Environmental Assessment

Project Background

The Pipeline provides the potable water supply for

- All facilities on the South Rim as in the Cross Canyon Corridor
- Over 6 million annual visitors to the South Rim
- 2,500 year-round residents on the South Rim plus seasonal and short-term residents
- Over 90,000 annual visitors in the Cross Canyon Corridor

The Pipeline also provides water supply for fire-suppression capabilities.



Transcanyon Water Distribution Pipeline Environmental Assessment

Project Background

Pipeline issues

- Age – Constructed in the 1960s
- Challenging operating environment and frequent failures
- Frequent maintenance and difficult conditions to perform repairs



Transcanyon Water Distribution Pipeline Environmental Assessment

What is the National Environmental Policy Act of 1969 (NEPA)?

Requires federal agencies to:

- Analyze the environmental impacts of federal actions
- Engage the public in the decision-making process

The federal agency prepares a written environmental assessment (EA) to determine if a federal undertaking would significantly affect the human environment



Transcanyon Water Distribution Pipeline Environmental Assessment

Where Are We in the NEPA Process?

- An EA has been prepared to analyze the environmental impacts of two action alternatives and the no action alternative
- The EA is available for public review from October 10 until November 10, 2018
- You can provide comments at any time during the public review period



Transcanyon Water Distribution Pipeline Environmental Assessment

What Topics are Analyzed in the EA?

- Bright Angel Creek Native Fish
- Special Status Terrestrial Wildlife
- Historic Structures and Buildings and Cultural Landscapes
- Archeological and Ethnographic Resources and Traditional Cultural Properties
- Visitor Use and Experience
- Wilderness Character
- Backcountry Commercial Services Socioeconomics
- Soundscape/Acoustic Environment



Transcanyon Water Distribution Pipeline Environmental Assessment

What Alternatives are Considered in the EA?

Alternative A – No Action

Alternative B – Relocate Water Intake

Alternative C – Replace Pipeline in Same Location








Transcanyon Water Distribution Pipeline Environmental Assessment

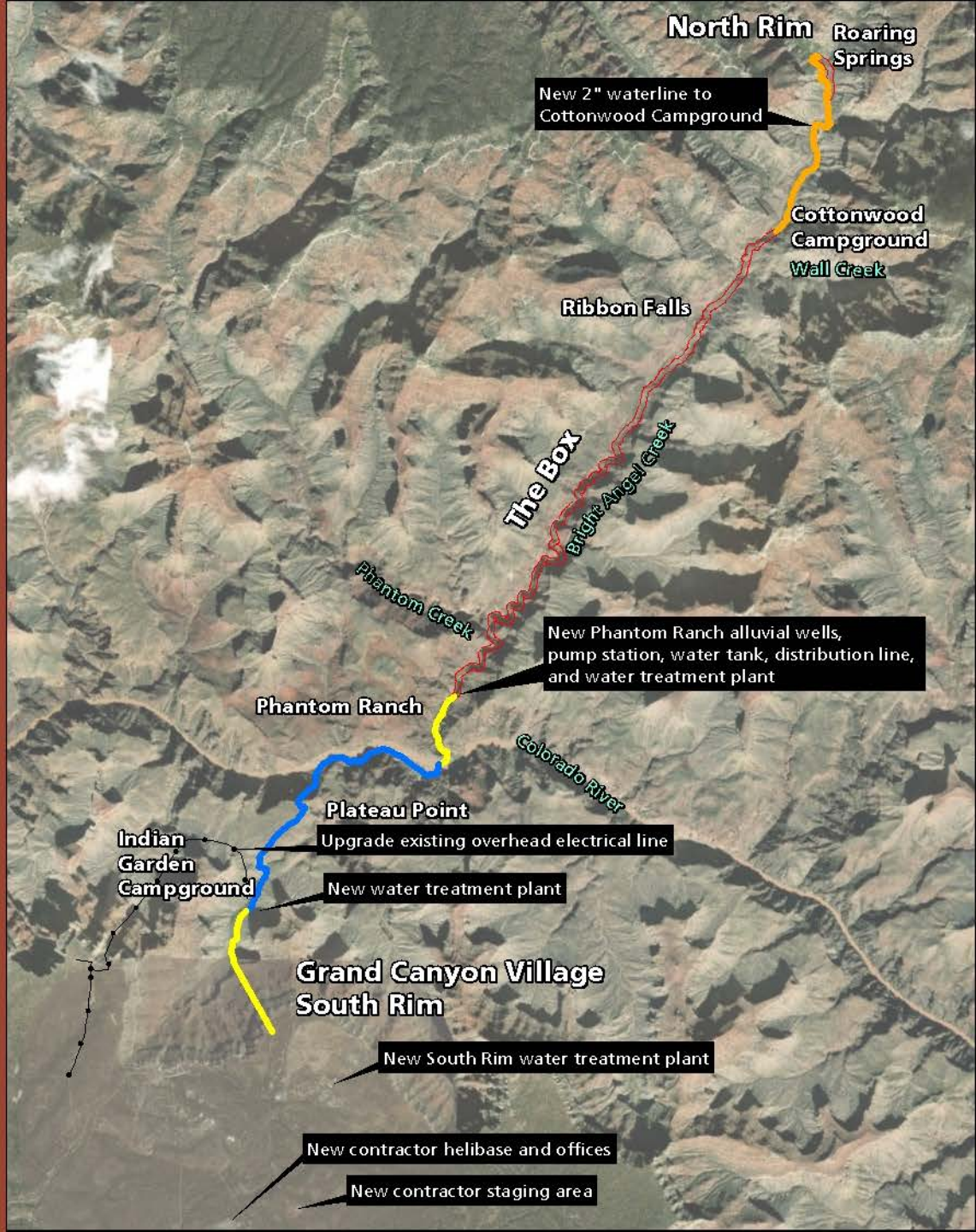
Alternatives

- Alternative A, the No Action alternative would continue current operation of the Pipeline.
- Alternative B would relocate the water intake to Bright Angel Creek near Phantom Ranch, eliminate 9 miles of Pipeline, and would take 4 to 5 years for construction.
- Alternative C would replace the Pipeline within the existing alignment and would take 5 to 6 years for construction.

Alternative B Relocate Water Intake (Preferred Alternative)

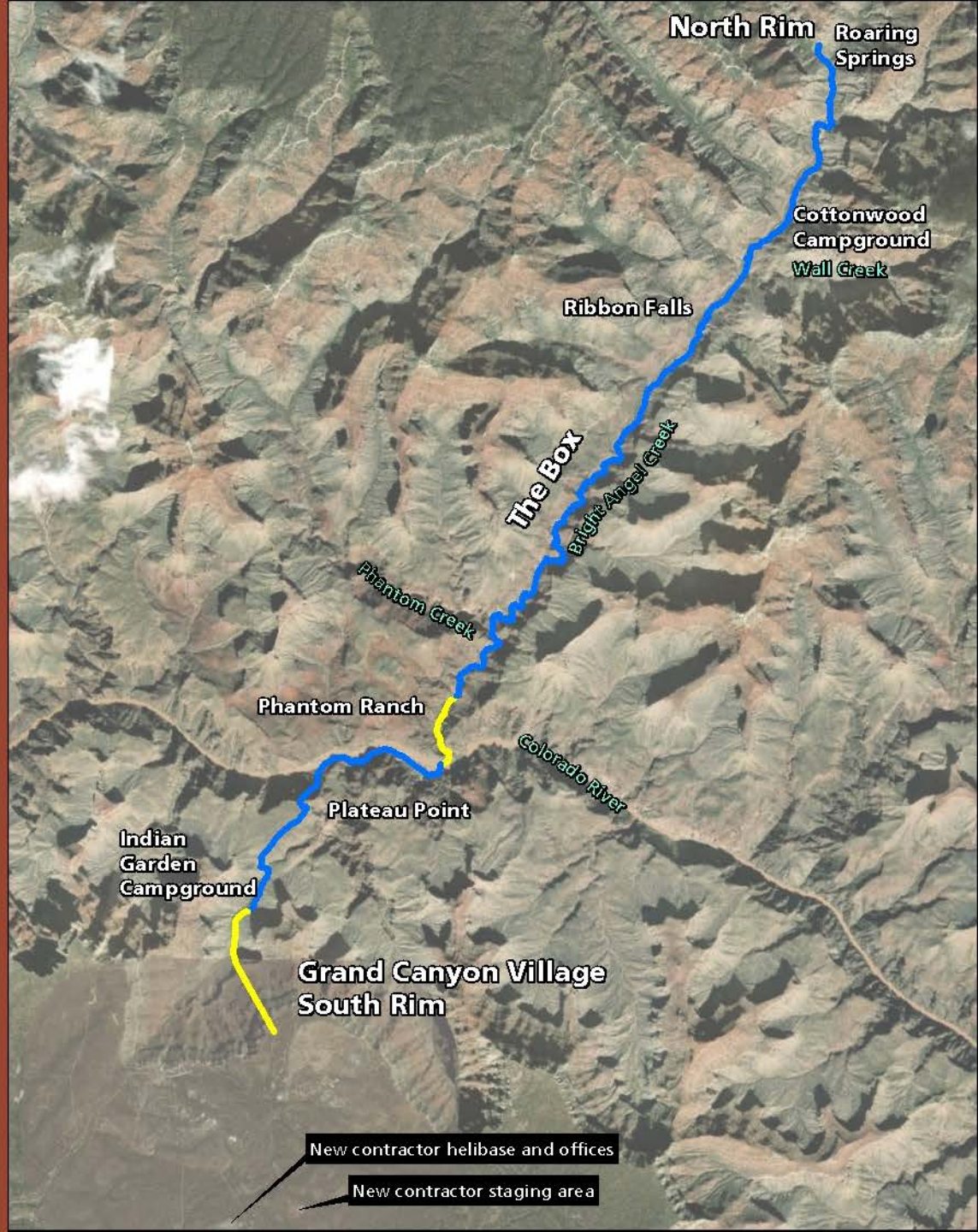
-  Overhead Powerline
-  Abandon Pipeline in Place
-  Existing Pipeline to Remain
-  New 2" Waterline
-  New Pipeline

Project Vicinity



Alternative C Replace Pipeline In-Kind

-  Existing Pipeline to Remain
-  New Pipeline





Transcanyon Water Distribution Pipeline Environmental Assessment

Next Steps in the EA Process

- Public Meetings and Comment on EA – October/November 2018
- NPS Review Comments – November/December 2019
- NPS Decision on Project – January/February 2019

Grand Canyon National Park
Arizona



Transcanyon Water Distribution Pipeline Environmental Assessment

We Welcome Your Input and Comments!

Comments can be submitted:

Online by visiting <http://parkplanning.nps.gov/grcatcwl>

Mailed to

Superintendent

Attn: Transcanyon Pipeline EA

Grand Canyon National Park

P.O. Box 129

Grand Canyon, Arizona 86203

Comments will be accepted until November 10, 2018.

Grand Canyon National Park
Arizona



Transcanyon Water Distribution Pipeline Environmental Assessment

Questions

