

<b>Matrix 3-12. Morning Star Hotel, Mill, and Mine Community - Buildings and Structures</b>				
<b>Feature</b>	<b>Date</b>	<b>Description</b>	<b>Condition</b>	<b>Contributing/ Non-Contributing</b>
<b>Rush Smelter</b>	1886	Standing structure. Square in plan and constructed of stone and mortar with small openings on two sides. Building narrows at two locations from grade to the top, with stone ledges at these locations. Plants and moss are growing on both ledges.	Fair	Contributing
<b>Rush Blacksmith Shop</b>	1935	Standing Building. One story structure, rectangular in plan with a gable roof. Two doors on the main elevation lead to two separate interior spaces - the workshop and the living area. Roofing is corrugated metal with a round metal exhaust pipe that extends above it. Pieces of wood framing mounted to the building are all that remain from the awning over the workshop door. Exterior walls have vertical board and batten siding. The wood is deteriorated in places and many of the battens are broken and missing. Foundation is poured in place concrete which is cracked in places. No windows or doors are extant but trim remains at some openings. The concrete and brick forge is extant in the southwest corner of the workroom. Though the hood is missing, the metal exhaust duct remains but it is rusted in places. The interior dividing wall has a vertical wood board finish. No other finishes are evident in the workshop but there are wood shelves mounted to the wall framing. In the living area, the interior finishes are in poor condition - wood flooring at the main level, built in shelves on the walls attached to the framing. A loft spans the full room with a small opening in the wood flooring for access to the upper space.	Fair	Contributing
<b>Morning Star Hotel Ruins</b>	c 1900	Scattered Stones, no foundation visible. No evidence of cellar depression.	Poor	Contributing
<b>Lyons House Ruins</b>	c 1925	Scattered stone rubble, no visible foundation.	Poor	Contributing
<b>Post Office Ruins</b>	c 1890	Concrete foundation piers, 12"x 6"x12"	Poor	Contributing
<b>Morning Star Livery Barn Ruins</b>	c 1899	Scatter of stones, retaining wall at Hillside, 8' long, 2.5' height maximum, Dry stacked retaining wall	Poor	Contributing
<b>Smith House Ruins</b>	c 1899	Concrete chimney base; shallow depression for cellar		Contributing



Figure 3-103. Rush Smelter, 1900. Note the road to the left of the Smelter and lack of vegetation, providing a view to Morning Star Mine Office, rear left. (BUFF Archives)



Figure 3-104. Similar view as above, note vegetation that has grown over the road to the Morning Star Mine Office. (Mundus Bishop 2017)

<b>Matrix 3-12. Morning Star Hotel, Mill, and Mine Community - Buildings and Structures</b>				
<b>Feature</b>	<b>Date</b>	<b>Description</b>	<b>Condition</b>	<b>Contributing/ Non-Contributing</b>
<b>Chase and Mulholland Store Ruins</b>	c 1899	Dry Stacked stone foundation - 2' to 18" height across width of foundation. Most of the foundation is covered by soil and vegetation. Depression with trash (metal), 6'x12'x3' deep at center of stone space. Store footprint legible as raised plinth above roadway edges.	Poor	Contributing
<b>Morning Star Mine Office Ruins</b>	c 1911	Concrete curb around foundation, 6" wide, height varies 6". Collapsed brick chimney.	Fair	Contributing
<b>Warehouse Ruins</b>	1927	Series of 18 concrete piers 18"x18" varying height 3" to 2', some square and some pyramidal with flat tops. Poured concrete perimeter, 6" wide, not consistent. Large concrete Pier, irregular Shape, 4' height. Low grasses and forbs grow within foundation	Fair	Contributing
<b>Oil Storage House Ruins</b>	c 1911	Poured concrete piers, pyramidal with flat top, 4 sided 2.5' height varies. Area is overgrown, hard to see, across Rush Road from Morning Star Mine Office ruins, larger trees and dense brush	Fair/Poor	Contributing
<b>Morning Star Mill Ruins</b>	1898	Concrete piers, 4' height typical, gray angular coarse aggregate with integral stones and concrete in board framed courses	Fair	Contributing
		<i>Foundation Floor</i> - heaved, gravel with small trees, concrete foundation and edge/threshold 6"-9" wide	Fair	
		<i>Engine Room</i> - Concrete and stone engine mount, 2' height with bolts, covered with moss and little trees. Concrete piers and foundation block with bolts and concrete footers	Fair	
		<i>Boiler Room</i> - Stone exterior, mortared and stacked, brick interior, 18" wide, 7'-8' height, 2 rooms, center wall 2.5' Some portions of the brick wall are collapsed	Fair/Poor	
		<i>Foundation</i> - Concrete edge 9" wide at perimeter of boiler room +/- 6" height.	Poor	
		<i>Boiler Smokestack</i> - Metal debris, 36" diameter	Poor	
		<i>Stone Retaining Wall</i> - Uphill side of Mill. Stone and mortar cantilevered/battered, set in two courses, width varies 24" height to 8-12'height.	Fair	

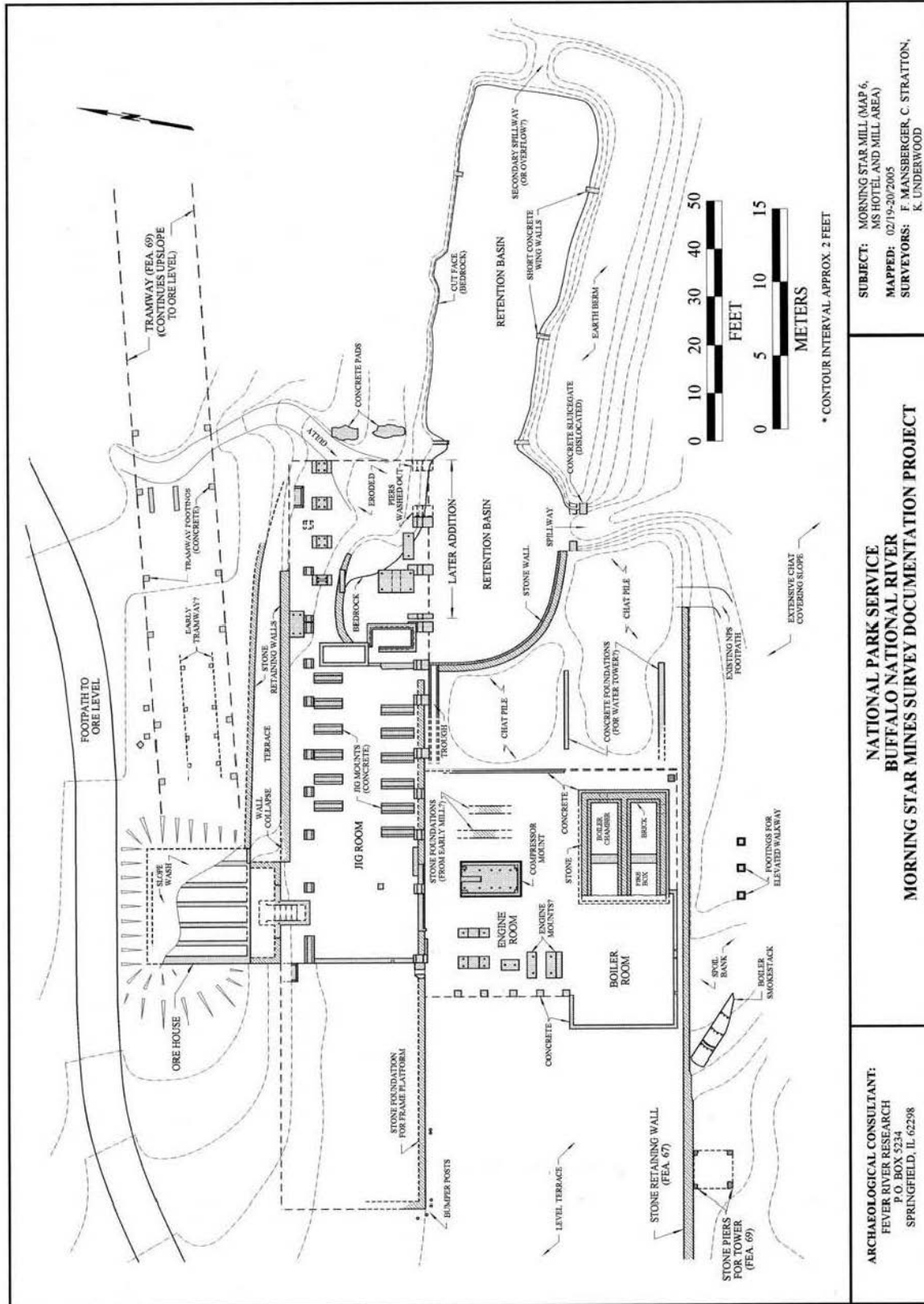


Figure 196. Map 6 of Area "B" of the Morning Star Site, showing the remains of the Morning Star Mill (FRR 2004).

Figure 3-105. Map 6 or Area "B" of the Morning Star Site, showing remains of Morning Star Mill. ((FRR 2004) Rogers et al, Historic Resource Documentation, Morning Star Mines Interpretive Area)

<b>Matrix 3-12. Morning Star Hotel, Mill, and Mine Community - Buildings and Structures</b>				
<b>Feature</b>	<b>Date</b>	<b>Description</b>	<b>Condition</b>	<b>Contributing/ Non-Contributing</b>
		<i>Ore House</i> - Level square area built into hillside, concrete perimeter foundation above level of mill piers	Poor	
		<i>Tailings</i> - fine material, gravel/sand. Unvegetated but a few grasses (Big Bluestem). Extends from mill to Rush Road	Good	
		<i>Retention Basin East</i> - Natural rock face on north side, 5' height, south side, stone and earthen berm, 5-6' high, level interior basin. Connects to other retention basin at narrow opening with concrete gate. Fed by natural drainage diverted to retention basins. Drainage is approximately 6' wide and 2-3' depth	Good/Fair	
		<i>Retention Basin West</i> - Level basin with mortared stone retaining wall on two sides, 5' height, level top, upper sides to concrete basins and into mill. South by southeast side with earthen berm.	Fair	
		<i>Spillway</i> - concrete wall 4' height by 18" width both sides	Fair	
<b>Morning Star Mill Stone Retaining Wall</b>		Extends south side of Mill, from tailings, boiler room, and tower. Dry stacked, 6" height and 24" wide stones and approximately 12-18" depth, height varies, 3' to 8' height	Fair	Contributing
<b>Morning Star Mill Stone Tower Ruins</b>		No surface ruins visible	Poor	Contributing
<b>Tramway Ruins</b>		<i>Concrete Piers</i> - flat-top concrete piers at hillside 24" height	Poor	Contributing
<b>Barn Ruins</b>	c 1902	No surface ruins visible	Poor	Contributing
<b>Courthouse Site</b>	c 1916	No surface ruins visible	Poor	Contributing
<b>Hopper House Ruins</b>		No surface ruins visible	Poor	Contributing
<b>Morning Star Shelter</b>		Contemporary wood shelter, 12'x10' on concrete pad. Interior wood benches and interpretive panel	Good	Non-Contributing



Figure 3-106. Chase and Mulholland Store and Morning Star Mine Office with Rush Blacksmith Shop and Warehouse in the background. The scale pit was between the store and the office, date unknown. (BUFF Archives)



Figure 3-107. The same view as above. The only remains of the Chase and Mulholland Store and Morning Star Mine Office are concrete foundations, a collapsed brick chimney and depressions. (Mundus Bishop 2017)



Figure 3-108. Rush Blacksmith Shop, 1925. (BUFF Archives)



Figure 3-109. Rush Blacksmith Shop and Warehouse, date unknown. (S. Rogers, BUFF Archives)



Figure 3-110. Rush Blacksmith Shop. (Mundus Bishop 2017)



Figure 3-111. Warehouse piers and foundations. (Mundus Bishop 2017)





Figure 3-112. Stone and concrete piers, and stone retaining wall (rear) at Morning Star Mill ruins. (Mundus Bishop 2017)



Figure 3-113. Tailings pile at Morning Star Mill ruins. (Mundus Bishop 2017)



Figure 3-114. Portion of retaining wall at Morning Star Mill ruins, 1984. (S. Rogers, BUFF Archives)



Figure 3-115. Morning Star Mill Stone Retaining Wall, near Boiler Room. (Mundus Bishop 2017)



Figure 3-116. Morning Star Mill ruins Boiler Room. (Mundus Bishop 2017)



Figure 3-117. Stone retaining wall and concrete pier. (Mundus Bishop 2017)

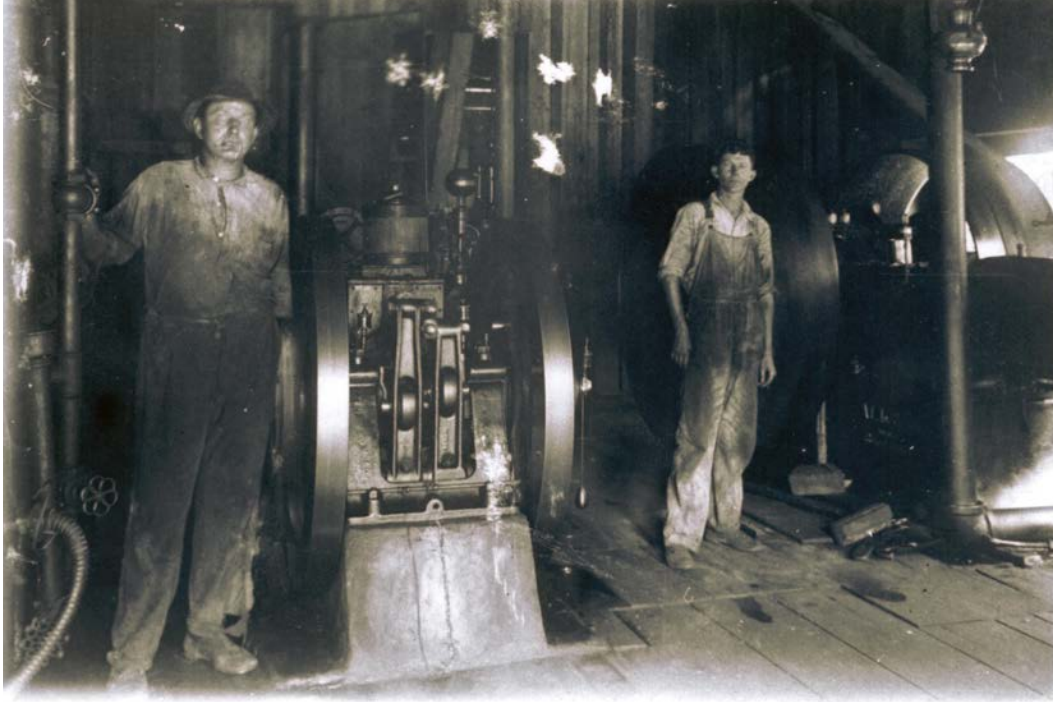


Figure 3-118. Machinery at Morning Star Mill, date unknown. (BUFF Archives)

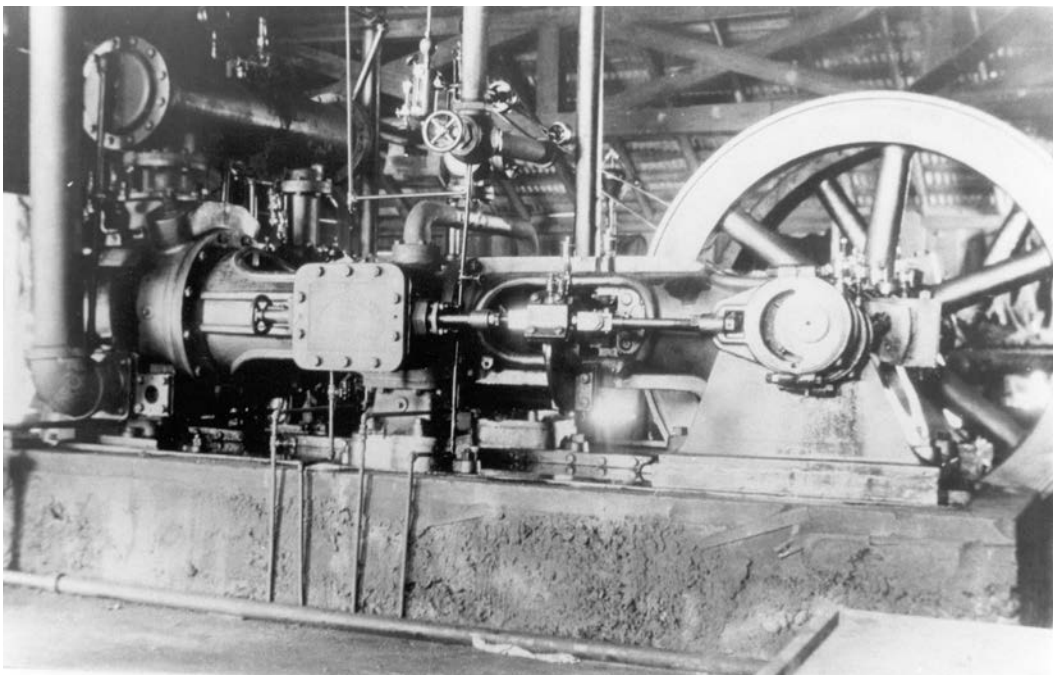


Figure 3-119. Air compressor at Morning Star Mill, 1927. (BUFF Archives)



Figure 3-120. Concrete engine mount at Morning Star Mill ruins. (Mundus Bishop 2017)



Figure 3-121. Concrete engine mount at Morning Star Mill ruins. (Mundus Bishop 2017)



Figure 3-122. Morning Star Mill retention basin concrete spillway, c 1980s. (BUFF Archives)



Figure 3-123. Morning Star Mill retention basin concrete spillway, same view as above. (Mundus Bishop 2017)



Figure 3-124. Morning Star Mill retention basin, c 1980s. (BUFF Archives)



Figure 3-125. Morning Star Mill retention basin. (Mundus Bishop 2017)

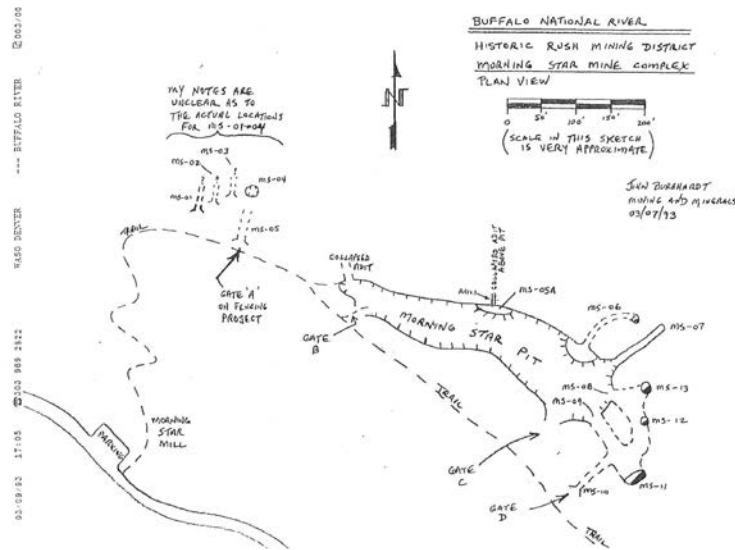


Figure 3-126. Morning Star Mine (M1) closure estimate sketch, 1993. (BUFF Archives)

Matrix 3-13. Morning Star Hotel, Mill, and Mine - Morning Star Mine (M1)				
Feature	Date	Description	Condition	Contributing/ Non-Contributing
Building Site		Dry-stack 4' height to grade 12' width	Fair/Poor	Contributing
Morning Star Drift Mine A		Short, excavated into hill side no evident opening/shaft filled in or surface excavated	Fair	Contributing
Morning Star Drift Mine B		Short, excavated into hillside no evident opening/shaft filled in or surface excavated, young dense cedars	Fair	Contributing
Morning Star Drift Mine C		Stone faced 7'x7'x7' room long cut from road	Fair	Contributing
Morning Star Loading Platform		Stone, dry-stacked 10' width x 2.5' height obscured by dirt and vegetation	Fair	Contributing
Morning Star Mine Opening 1		Opening 1 - Single opening (near Open Cut) 8' width x 5.5' height, metal grate fence, cliff face 15' height, 5' overhang		Contributing
		Opening 2 - Single opening 5' width x 4' height, metal grate fence, cliff face, 15' height overhang 3' wide		
		Opening 3 - Single opening shaft mine, metal grate fence both vertical and horizontal 3-4' height, 15' width opening caved in, cliff face 15', no overhang		
Morning Star Shaft		20' diameter x 15' depth with dark unfenced 3' hole at bottom	Fair	Contributing
Morning Star Mine Open Cut		Narrow cut at opening with 20' side walls. Interior of cut mostly level, some rock fall and pines. Chainlink fence at entrance	Good/Fair	Contributing
Morning Star Mine Spoils Pile			Fair	Contributing





Figure 3-127. Morning Star Mine (M1) open cut, date unknown. (BUFF Archives)



Figure 3-128. Morning Star Mine (M1) open cut. (Mundus Bishop 2017)



Figure 3-129. Morning Star Mine (M1) open cut entrance. (Mundus Bishop 2017)



Figure 3-130. Morning Star Mine (M1) opening 1. (Mundus Bishop 2017)

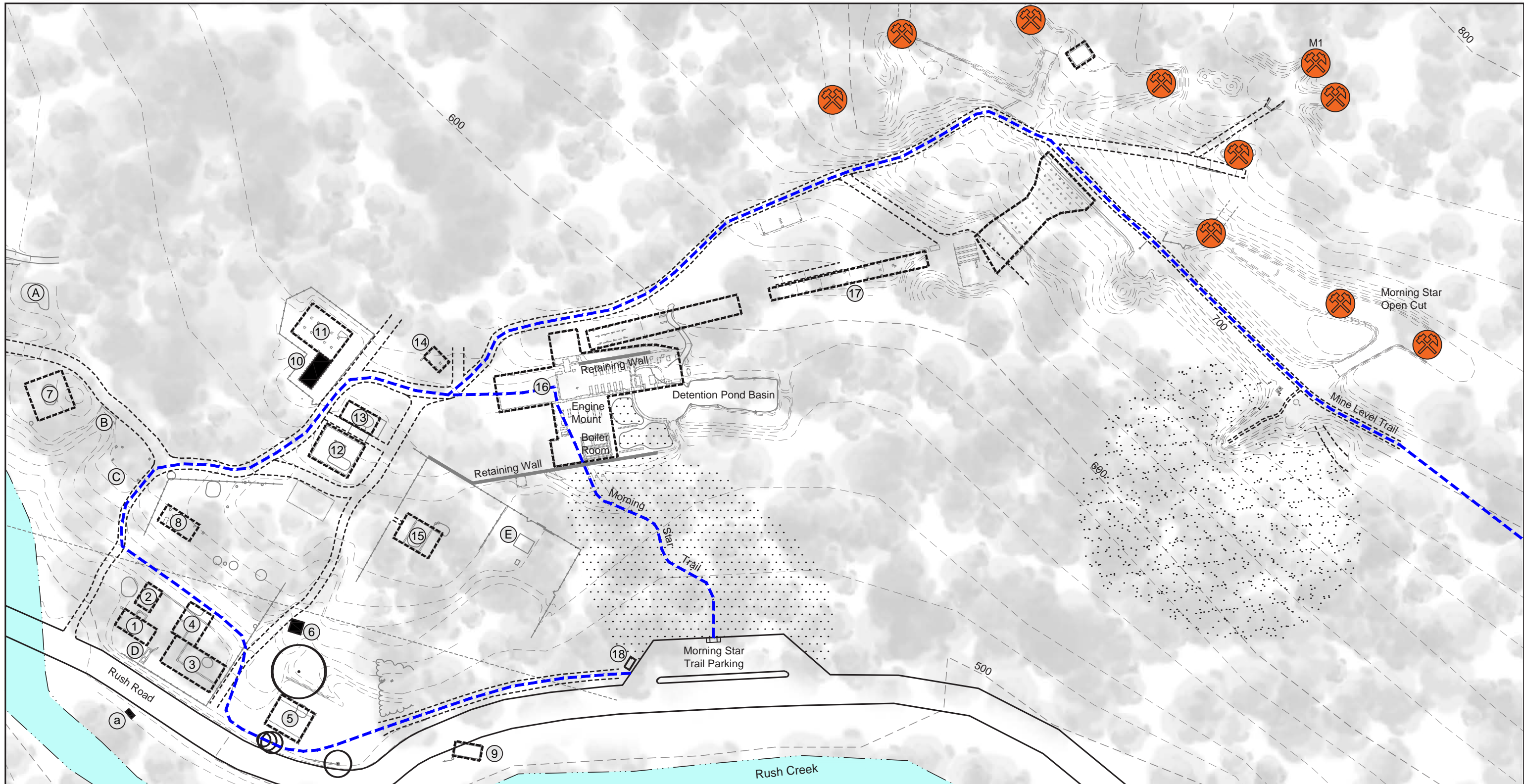


Figure 3-131. Morning Star Mine (M1) opening 2. (Mundus Bishop 2017)



Figure 3-132. Morning Star Mine (M1) opening 3. (Mundus Bishop 2017)

<b>Matrix 3-14. Morning Star Hotel, Mill, and Mine Community - Small Scale Features</b>				
<b>Feature</b>		<b>Description</b>	<b>Condition</b>	<b>Contributing/ Non-Contributing</b>
<b>Stone Retaining Wall at Chase Mulholland Store</b>		10' long, 18" to 2' height, dry stacked stone at upper edge of hill, 12" to 18" wide. At Chase Mulholland Store ruins	Poor	Contributing
<b>Scale Pit</b>		Poured concrete pit and concrete pad on road, filled in with small trees/shrubs and dirt	Fair	Contributing
<b>Stone Retaining Wall - at Tramway</b>		Wall at tramway, rubble stone (not stacked) at side of walk/trail/tramway, 6' to 8' at concrete piers	Fair	Contributing
<b>Footbridge Pillar</b>	c 1915	At Rush Creek. Concrete pillar 9' high on 3" base; anchor bolts at top. c 1915	Fair	Contributing
<b>Rush Blacksmith Shop Fence</b>		Surrounds Rush Blacksmith Shop and Warehouse ruins	Good	Non-Contributing
<b>Wood Fence</b>		Log post fence at overlook to Morning Star Mill ruins	Good	Non-Contributing
<b>Interpretive Panels</b>		Contemporary, metal stands, approximately 30" high	Good/Fair	Non-Contributing
<b>Benches</b>		Contemporary, wood post and slats; 5' length	Good	Non-Contributing



**Buildings and Structures**

- ① Post Office Ruins (c 1890)
- ② Barn Ruins (1902)
- ③ Morning Star Hotel Ruins (c 1900)
- ④ Lyons House Ruins (c 1925)
- ⑤ Morning Star Livery Barn Ruins (c 1899)
- ⑥ Rush Smelter (1886)
- ⑦ Courthouse Site (c 1916)
- ⑧ Doctor's / Maxey House Ruins (c 1916)
- ⑨ Morning Star Mill Pumphouse Ruins (1926)
- ⑩ Rush Blacksmith Shop (1925)
- ⑪ Warehouse Ruins (1927)
- ⑫ Chase and Mulholland Store Ruins (c 1899)
- ⑬ Morning Star Mine Office Ruins (c 1911)
- ⑭ Oil Storage House Ruins (c 1911)
- ⑮ Smith House Ruins (c 1899)
- ⑯ Morning Star Mill Ruins (c 1898)
- ⑰ Tramway Ruins (c 1898)
- ⑱ NPS Interpretive Shelter

**Mines**

- M1 Morning Star Mine Complex (1884 to 1931)

**Circulation**

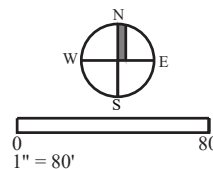
- Ⓐ Footbridge Pillars (c 1915)

**Small Scale Features**

- Ⓐ Artifact Scatter
- Ⓑ Stone Retaining Wall
- Ⓒ Stone Scatter Pier Falls
- Ⓓ Septic Tank
- Ⓔ Concrete Pad for Outhouse

**Legend**

- Road
- - - Road Trace
- - - Pedestrian Trail
- Creek / River
- Ⓜ Mine / Mine Complex
- Extant Building
- Building Ruins
- Remnant Feature
- Morning Star Mine
- Waste Rock Pile
- Morning Star Mill
- Tailings Pile



**Sources:**

USGS 2013 - National Geographic Society, Arkansas GIS (<https://gis.arkansas.gov/>), Google Maps 2017, Historic Resource Documentation Morning Star Mines Interpretive Area, Cultural Landscapes Inventory 2012

SEPTEMBER 2018 UNITED STATES DEPARTMENT OF THE INTERIOR BUFFALO NATIONAL RIVER ARKANSAS 173/141247	TITLE OF PROJECT <b>CULTURAL LANDSCAPE REPORT          AND ENVIRONMENTAL ASSESSMENT</b> TITLE OF DRAWING <b>EXISTING CONDITION - MORNING STAR HOTEL, MILL, AND MINE COMMUNITY</b> NAME OF PARK <b>RUSH HISTORIC DISTRICT</b> REGION COUNTY STATE MIDWEST MARION ARKANSAS	Illustration 3-3. 3-111
---	---	----------------------------



1 **House Row**

2

3 **Spatial Organization**

4

5 House Row is at the west edge of the study  
6 area. Five extant buildings mark this row of  
7 former houses and businesses. All are aligned  
8 along Rush Road and set above the roadway.  
9 Buildings are aligned along a consistent set-  
10 back. Front porches and building entrances  
11 face Rush Road, and support structures  
12 are located behind and uphill. Open mown  
13 areas surround each building, which are  
14 framed by native and some ornamental  
15 vegetation. A fence separates the buildings  
16 from the road. Narrow driveways are visible  
17 as slight depressions between buildings.  
18 Deciduous shade trees line the front yards,  
19 set in a mown grass understory. Behind  
20 the buildings, vegetation is unmaintained  
21 and dense creating a vegetated backdrop  
22 for the buildings. An intermittent stream is  
23 between Taylor-Medley General Store and the  
24 Storekeeper's house.

25

26 *Assessment of Integrity*

27 Historically, three businesses and seven  
28 houses comprised House Row, which  
29 faced Rush Road and had views to Rush  
30 Creek, Morning Star Hotel, Mill, and Mine  
31 Community, and the mines on Rush Mountain.  
32 Over time vegetation has regrown and  
33 obscured spatial relationships between  
34 buildings, yards and support spaces (barns,  
35 gardens, pastures) behind the homes, and  
36 has removed views to Rush Creek and Rush  
37 Mountain. Several buildings and structures  
38 are ruins with physical remains obscured  
39 by vegetation. Open mown areas around  
40 the buildings reflect the historic spatial  
41 organization, and contribute to the cultural  
42 landscape.

43

44

45

46

47 **Buildings and Structures/Ruins**

48

49 House Row includes five extant buildings, the  
50 sites of two former buildings, and ruins of two  
51 buildings, evidenced by foundation stones.  
52 Historically, there were three businesses and  
53 seven houses at House Row.

54

55 Buildings within House Row are generally  
56 wood framed, and one or one and a half  
57 stories in height with gable or shed roofs.  
58 Most have corrugated metal roofing and  
59 wood siding oriented either horizontally or  
60 vertically. Stacked stone pier foundations are  
61 typical, although a few buildings have poured  
62 in place concrete foundations. Some buildings  
63 have intact window sashes but most windows  
64 and doors are missing. Interior finishes are  
65 damaged or missing with wood flooring, wall,  
66 and ceiling finishes deteriorated in many  
67 places. Remnants of wall paper are visible on  
68 walls and ceilings of some buildings. Sections  
69 of deteriorated flooring, possibly linoleum,  
70 are visible in a few structures.

71

72 *Assessment of Integrity*

73 Buildings retain integrity of location, design,  
74 feeling, setting, materials, workmanship and  
75 association, especially when considered as  
76 a whole community. As buildings continue  
77 to deteriorate, the integrity of materials  
78 and workmanship will be reduced. Further  
79 deterioration may affect other aspects of  
80 integrity, especially if additional buildings are  
81 lost to collapse or arson.

82

83 **Small Scale Features**

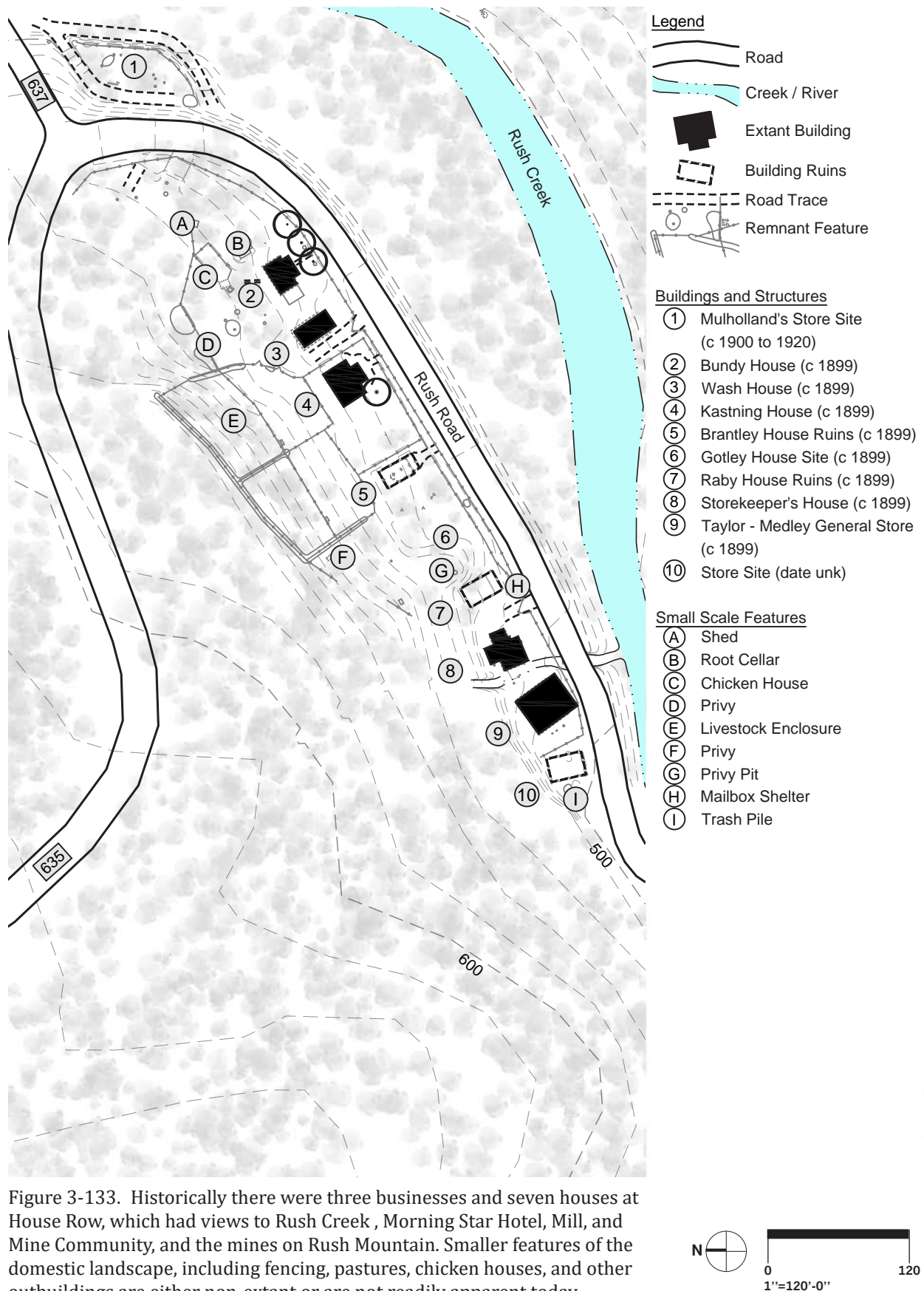
84

85 Small scale features within House Row  
86 include a wire fence (non-contributing), and  
87 features that reflect domestic life at Rush.  
88 These include cellar pits, trash piles, stone  
89 rubble/stone walls, and wire fencing.

90

91 Outbuildings and structures historically

92 associated with House Row were located



(Mundus Bishop 2017, USGS 2013 - National Geographic Society, Arkansas GIS (<https://gis.arkansas.gov/>), Google Maps 2017, Historic Resource Documentation Morning Star Mines Interpretive Area, Cultural Landscapes Inventory 2012)