



# WELCOME

## Visitor Use Site Management Planning

Please provide comments - **YOUR INPUT IS IMPORTANT TO US!**

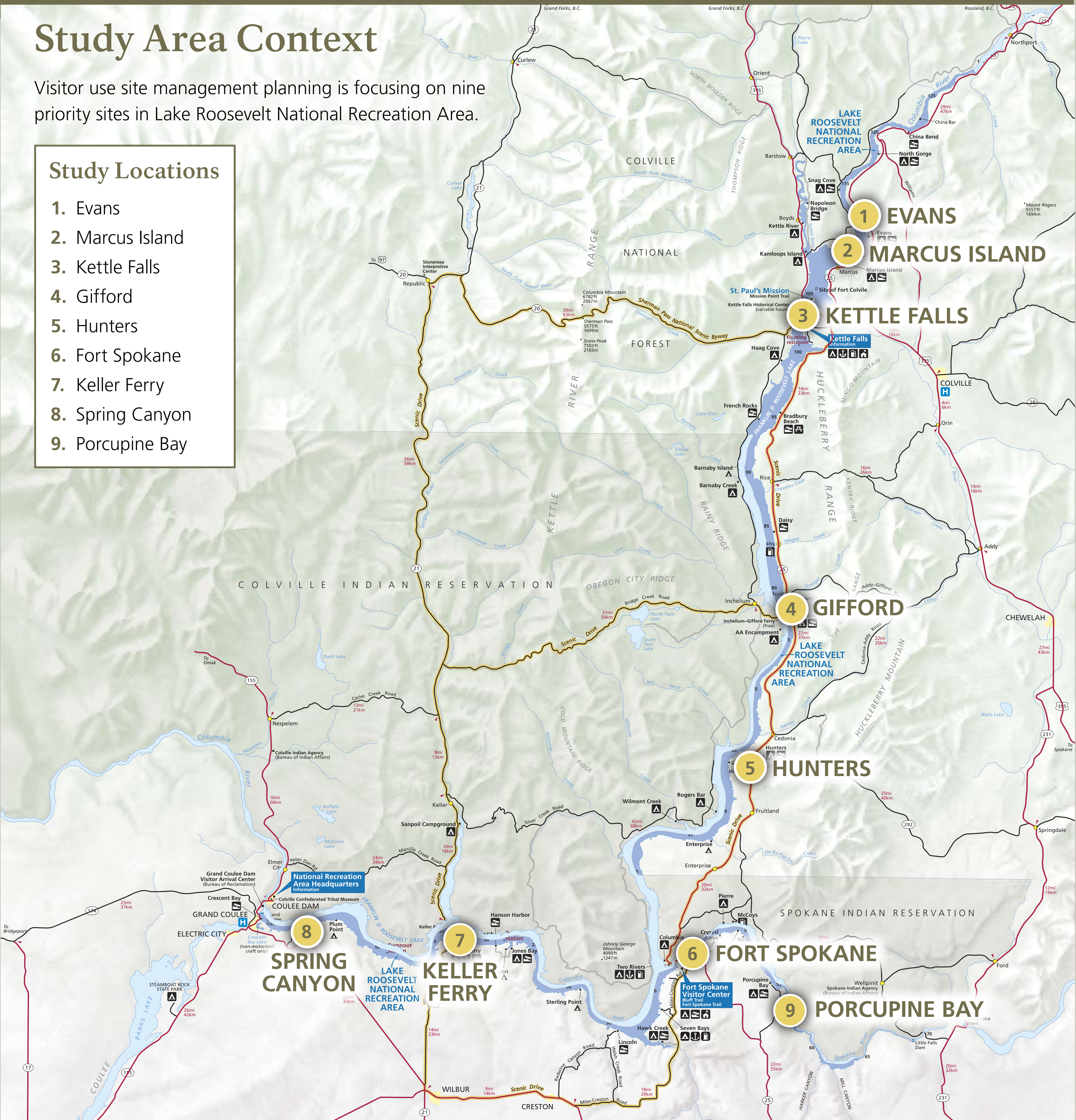
You can submit your comments until November 16th to the National Park Service planning website:  
<https://parkplanning.nps.gov/parks>  
Search by park, and click on Lake Roosevelt NRA to find “Visitor Use Site Management Planning”

### Study Area Context

Visitor use site management planning is focusing on nine priority sites in Lake Roosevelt National Recreation Area.

#### Study Locations

1. Evans
2. Marcus Island
3. Kettle Falls
4. Gifford
5. Hunters
6. Fort Spokane
7. Keller Ferry
8. Spring Canyon
9. Porcupine Bay







PRELIMINARY CONCEPT FOR SITE 1: EVANS



- PRELIMINARY MANAGEMENT STRATEGIES COMMON TO ALL SITES**
- CA Make accessibility improvements
  - CB Put in RV length spots
  - CC Delineate campsites
  - CD Create space for tents
  - CE Delineate pedestrian circulation
  - CF Improve vehicular circulation
  - CG Add directional signage
  - CH Improve parking
  - CI Move or add car counters
  - CJ Close areas for winter season
  - CK Implement vegetation management
  - CM Install water efficient irrigation
  - CN Use permeable surface materials
  - CO Remove amphitheater
  - CP Remove swim dock

- OTHER POSSIBLE MANAGEMENT STRATEGIES FOR THIS SITE**
- A Add self-contained large RV and boat parking lot stalls in day use area
  - B Change angle of the new seawall section and restore natural shoreline
  - C Provide rigging and staging locations for boats at boat launch

- ALSO MAY CONSIDER**
- 1 Remove boat launch and/or replace with non-motorized launch
  - 2 Add non-motorized launch to existing boat launch area
  - 3 Add boat tie-ups and mooring bouys along the shoreline
  - 4 Rehabilitate the failing sections of the seawall

PRELIMINARY CONCEPT FOR SITE 2: MARCUS



- PRELIMINARY MANAGEMENT STRATEGIES COMMON TO ALL SITES**
- CA Make accessibility improvements
  - CB Put in RV length spots
  - CC Delineate campsites
  - CD Create space for tents
  - CE Delineate pedestrian circulation
  - CF Improve vehicular circulation
  - CG Add directional signage
  - CI Move or add car counters
  - CJ Close areas for winter season
  - CK Implement vegetation management
  - CN Use permeable surface materials
  - CP Remove swim dock

- OTHER POSSIBLE MANAGEMENT STRATEGIES FOR THIS SITE**
- A Remove boat launch and replace with non-motorized launch
  - B Add walk-in campsites
  - C Formalize two RV campsites at "Sturgeon Point"
  - D Remove swim area designation





PRELIMINARY CONCEPT FOR SITE 3: KETTLE FALLS



- PRELIMINARY  
MANAGEMENT STRATEGIES  
COMMON TO ALL SITES**
- CA Make accessibility improvements
  - CB Put in RV length spots
  - CC Delineate campsites
  - CD Create space for tents
  - CE Delineate pedestrian circulation
  - CF Improve vehicular circulation
  - CG Add directional signage
  - CH Improve parking
  - CI Move or add car counters
  - CL Implement vegetation management
  - CM Install water efficient irrigation
  - CN Use permeable surface materials
  - CO Remove amphitheater
  - CQ Automate skid docks

- OTHER POSSIBLE MANAGEMENT  
STRATEGIES FOR THIS SITE**
- A Divide and relocate group campsites
  - B Provide rigging and staging locations for boats at boat launch
  - C Fill in canal with soil and add stop gates
  - D Change circulation to establish a one-way road to boat launch
  - E Delineate parking spaces and formalize gravel parking lot
  - F Develop deep water boat launch to 1220 - 1218 foot elevation

- ALSO MAY CONSIDER**
- 1 Upgrade fish cleaning station
  - 2 Add stop gates to the canal to manage existing waterflow

PRELIMINARY CONCEPT FOR SITE 4: GIFFORD



- PRELIMINARY  
MANAGEMENT STRATEGIES  
COMMON TO ALL SITES**
- CA Make accessibility improvements
  - CB Put in RV length spots
  - CC Delineate campsites
  - CD Create space for tents
  - CE Delineate pedestrian circulation
  - CF Improve vehicular circulation
  - CG Add directional signage
  - CH Improve parking
  - CI Move or add car counters
  - CJ Close areas for winter season
  - CL Implement vegetation management
  - CN Use permeable surface materials
  - CP Remove swim dock and barricades
  - CQ Automate skid docks

- OTHER POSSIBLE MANAGEMENT  
STRATEGIES FOR THIS SITE**
- A Remove swim area wave dissipators & designation from Cloverleaf. Designate shoreline access area with wave dissipators along shoreline trail
  - B Extend parking lot at boat launch to serve as trailhead parking and as campground overflow
  - C Formalize visitor created parking lot
  - D Remove campsite and turn it into a pull off for loading gear to/from the courtesy dock. In addition, create a pedestrian path to the restroom
  - E Add government dock
  - F Add accessible shoreline trail
  - G Provide rigging and staging locations for boats at boat launch
  - H Add accessible lake overlooks along shoreline trail

- ALSO MAY CONSIDER**
- 1 Add walk-in campsites along the trail to Cloverleaf
  - 2 Add a trailer parking area
  - 3 Add boat tie-ups and mooring bouys along the shoreline





PRELIMINARY CONCEPT FOR SITE 5: HUNTERS



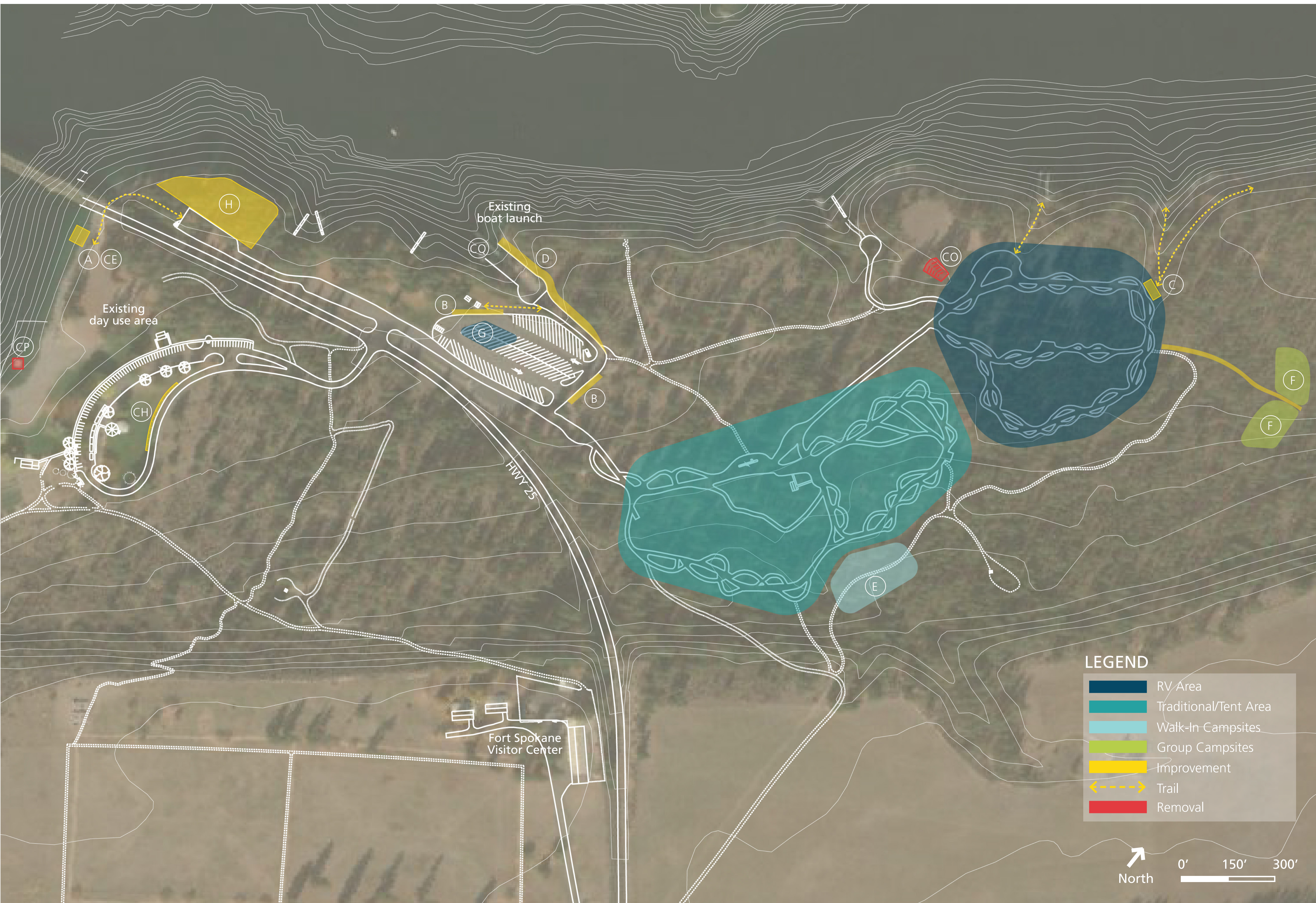
- PRELIMINARY  
MANAGEMENT STRATEGIES  
COMMON TO ALL SITES**

  - CA Make accessibility improvements
  - CB Put in RV length spots
  - CC Delineate campsites
  - CD Create space for tents
  - CE Delineate pedestrian circulation
  - CF Improve vehicular circulation
  - CG Add directional signage
  - CH Improve parking
  - CI Move or add car counters
  - CJ Close areas for winter season
  - CK Gate group campsites
  - CL Implement vegetation management
  - CM Install water efficient irrigation
  - CN Use permeable surface materials
  - CP Remove swim dock
  - CQ Automate skid docks
- OTHER POSSIBLE MANAGEMENT  
STRATEGIES FOR THIS SITE**

  - A Remove campsite and create path to/from courtesy dock
  - B Add self-contained large RV parking lot campsites in overflow parking lot
  - C Extend floating dock on existing boat launch docks to provide 30 minute docking area
  - D Create trail from day use area parking to shoreline access area and courtesy dock
  - E Provide rigging and staging locations for boats at boat launch
- ALSO MAY CONSIDER**

  - 1 Add walk-in campsites with parking near existing campground
  - 2 Relocate fish cleaning station

PRELIMINARY CONCEPT FOR SITE 6: FORT SPOKANE



- PRELIMINARY  
MANAGEMENT STRATEGIES  
COMMON TO ALL SITES**

  - CA Make accessibility improvements
  - CB Put in RV length spots
  - CC Delineate campsites
  - CD Create space for tents
  - CE Delineate pedestrian circulation
  - CF Improve vehicular circulation
  - CG Add directional signage
  - CH Improve parking
  - CI Move or add car counters
  - CK Gate group campsites
  - CL Implement vegetation management
  - CM Install water efficient irrigation
  - CN Use permeable surface materials
  - CO Remove amphitheater
  - CP Remove swim dock
  - CQ Automate skid docks
- OTHER POSSIBLE MANAGEMENT  
STRATEGIES FOR THIS SITE**

  - A Formalize trail to main day use area. Add accessible overlooks along trail
  - B Provide rigging and staging locations for boats at boat launch
  - C Create trail and parking area from Fort Spokane to Porcupine Bay
  - D Add an additional lane to the boat launch
  - E Add 3-4 walk-in campsites
  - F Create two new group campsites
  - G Add self-contained large RV parking lot campsites in overflow parking lot
  - H Convert both group campsites to day use area





PRELIMINARY CONCEPT FOR SITE 7: KELLER FERRY



- PRELIMINARY  
MANAGEMENT STRATEGIES  
COMMON TO ALL SITES**
- CA Make accessibility improvements
  - CB Put in RV length spots
  - CC Delineate campsites
  - CD Create space for tents
  - CE Delineate pedestrian circulation
  - CF Improve vehicular circulation
  - CG Add directional signage
  - CH Improve parking
  - CI Move or add car counters
  - CJ Close areas for winter season
  - CL Implement vegetation management
  - CM Install water efficient irrigation
  - CN Use permeable surface materials
  - CO Remove amphitheater
  - CP Remove swim dock

- OTHER POSSIBLE MANAGEMENT  
STRATEGIES FOR THIS SITE**
- A Add new campground loop with RV double stall and trailer parking
  - B Remove rusting gabion baskets and replace with a bio-engineered shoreline stabilization
  - C Add five walk-in campsites
  - D Provide rigging and staging locations for boats at boat launch

- ALSO MAY CONSIDER**
- 1 Improve circulation with parking lot turn around. Maintain walk-in campsites on north side of lot and convert campsites on south side of lot to day use parking stalls

PRELIMINARY CONCEPT FOR SITE 7: KELLER FERRY



- PRELIMINARY  
MANAGEMENT STRATEGIES  
COMMON TO ALL SITES**
- CA Make accessibility improvements
  - CC Delineate campsites
  - CG Add directional signage
  - CH Improve parking
  - CI Move or add car counters
  - CK Gate group campsites
  - CL Implement vegetation management
  - CN Use permeable surface materials

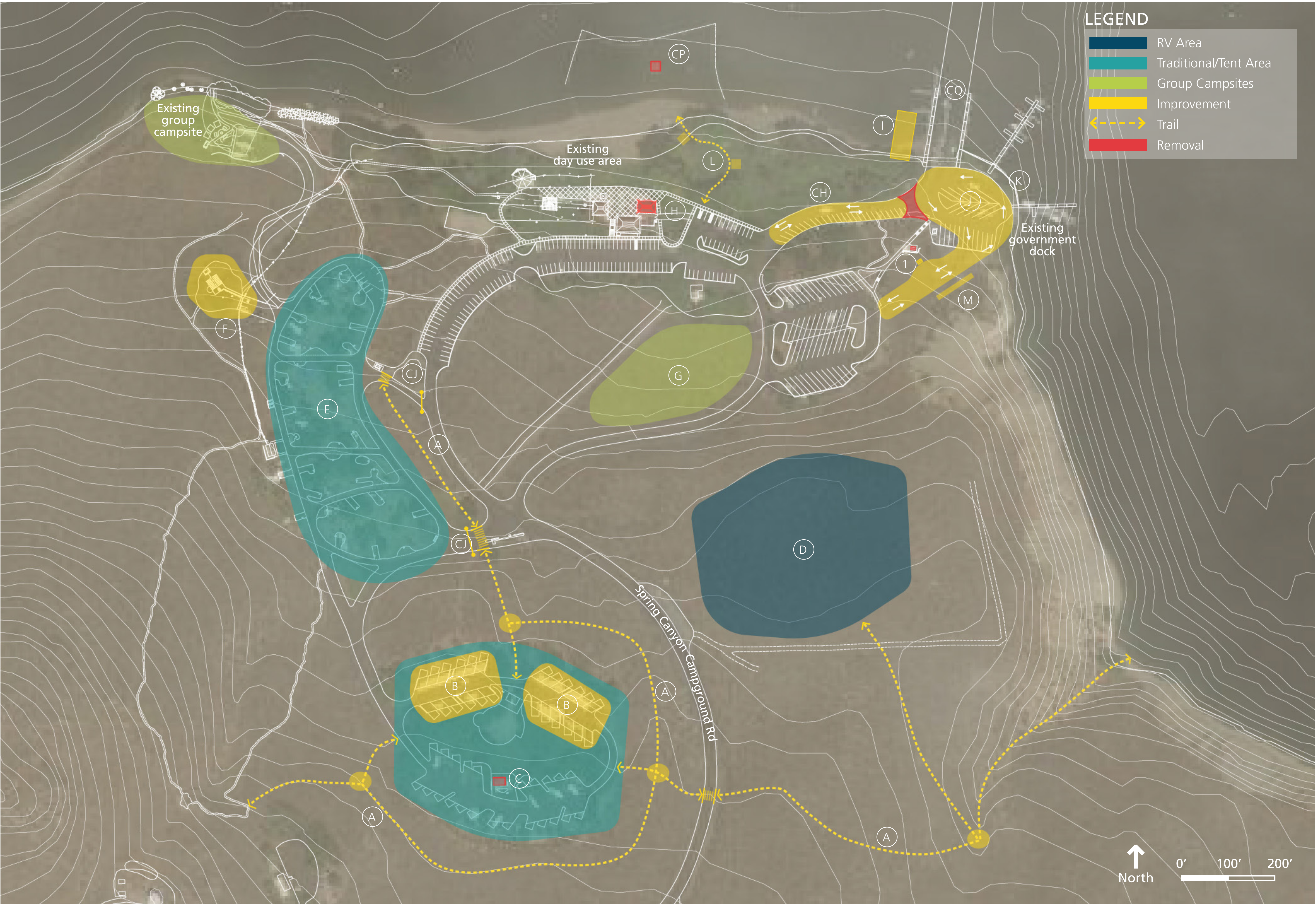
- OTHER POSSIBLE MANAGEMENT  
STRATEGIES FOR THIS SITE**
- D Edge treatment along road to preserve natural landscape

- ALSO MAY CONSIDER**
- 2 Formalize parking for day use area





PRELIMINARY CONCEPT FOR SITE 8: SPRING CANYON

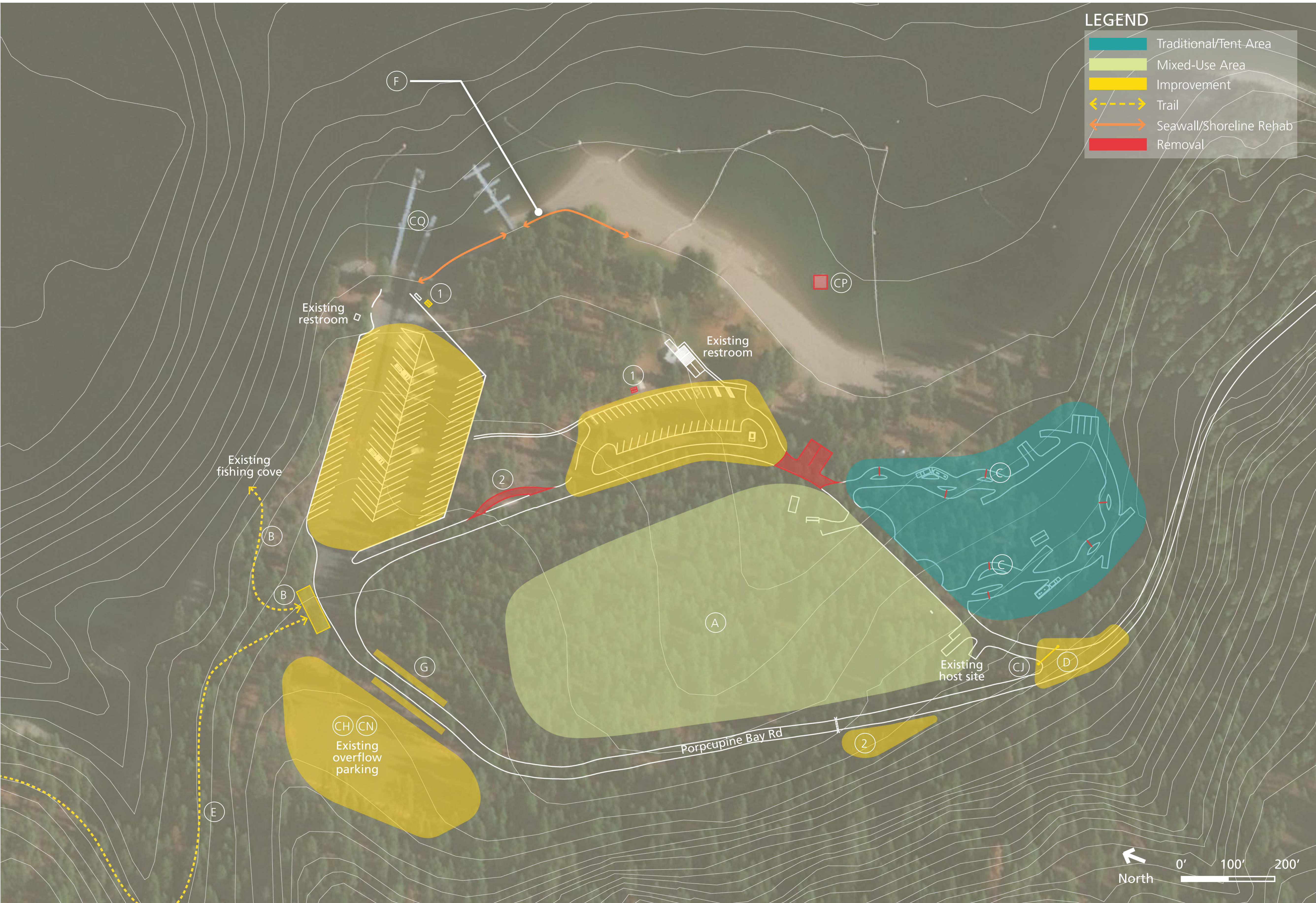


- PRELIMINARY MANAGEMENT STRATEGIES COMMON TO ALL SITES**
- (CA) Make accessibility improvements
  - (CB) Put in RV length spots
  - (CC) Delineate campsites
  - (CD) Create space for tents
  - (CE) Delineate pedestrian circulation
  - (CF) Improve vehicular circulation
  - (CG) Add directional signage
  - (CH) Improve parking
  - (CI) Move or add car counters
  - (CJ) Close areas for winter season
  - (CL) Implement vegetation management
  - (CM) Install water efficient irrigation
  - (CN) Use permeable surface materials
  - (CP) Remove swim dock
  - (CQ) Automate skid docks

- OTHER POSSIBLE MANAGEMENT STRATEGIES FOR THIS SITE**
- (A) Create multi-use trail from upper campground to day use area
  - (B) Remove canopy shades for these 24 spots
  - (C) Remove one comfort station at upper loop
  - (D) Add an RV campground loop
  - (E) Reduce the number of campsites in the lower loop
  - (F) Convert group campsite to host site
  - (G) Add group campsite to the area above the day use area
  - (H) Remove/retrofit concession building. Potential for food trucks
  - (I) Add non-motorized boat launch adjacent to existing boat launch
  - (J) Create two-way loop to improve circulation at boat launch
  - (K) Add government dock parking
  - (L) Create accessible pathway to shore with accessible picnic areas
  - (M) Provide rigging and staging locations for boats at boat launch

- ALSO MAY CONSIDER**
- (1) Relocate fish cleaning station

PRELIMINARY CONCEPT FOR SITE 9: PORCUPINE BAY



- PRELIMINARY MANAGEMENT STRATEGIES COMMON TO ALL SITES**
- (CA) Make accessibility improvements
  - (CB) Put in RV length spots
  - (CC) Delineate campsites
  - (CD) Create space for tents
  - (CE) Clarify pedestrian circulation
  - (CF) Improve vehicular circulation
  - (CG) Add directional signage
  - (CH) Improve parking
  - (CI) Move or add car counters
  - (CJ) Close areas for winter season
  - (CL) Implement vegetation management
  - (CN) Use permeable surface materials
  - (CP) Remove swim dock
  - (CQ) Automate skid docks

- OTHER POSSIBLE MANAGEMENT STRATEGIES FOR THIS SITE**
- (A) Connect new campground loop, with RV and tent campsites, to existing campground loop and revise to one-way traffic flow
  - (B) Add new trailhead and trail to fishing cove
  - (C) Remove curbs splitting campsites in existing loop
  - (D) Move entrance gate to allow for turn around
  - (E) Create trail to Fort Spokane to provide backpacking opportunity
  - (F) Rehabilitate shoreline as seawall deteriorates
  - (G) Provide rigging and staging locations for boats at boat launch

- ALSO MAY CONSIDER**
- (1) Relocate fish cleaning station
  - (2) Relocate dump station to Porcupine Bay Road