

GREATER MILL CREEK ECOSYSTEM RESTORATION PROJECT

Introduction and Overview



Under the umbrella of Redwoods Rising, the National Park Service (NPS) and California Department of Parks and Recreation (CDPR) are beginning the planning process to continue restoration efforts in the Greater Mill Creek (GMC) area through vegetation management, aquatic restoration, and road removal activities. CDPR and NPS are preparing a joint Initial Study/Environmental Assessment (IS/EA) to fulfill the requirements of the California Environmental Quality Act and National Environmental Policy Act, respectively. As part of this planning effort, CDPR and NPS will also assess the effects of restoration activities on cultural resources under Section 106 of the National Historic Preservation Act and California Public Resources Code Section 5024, respectively.

The GMC Ecosystem Restoration Project (Proposed Action) is located within Redwood National and State Parks (RNSP), primarily in Del Norte Coast Redwoods State Park (DNCRSP), with a portion in Redwood National Park. Over 27,000 acres of forest within DNCRSP were commercially logged through 2000. These forests are now unnaturally dense and progression towards late-seral habitat is hindered, species diversity is reduced, and the spread of invasive exotic plants threatens to alter vegetation communities. Unmaintained logging roads, skid trails, and stream crossings are eroding, leading to fill material entering nearby stream channels. Past commercial logging has degraded aquatic habitat and resulted in a lack of large wood in the project area, which is important for habitat function.

The flowchart to the right shows the general order of ecosystem restoration activities that would occur within a given area that uses heavy equipment. Road removal and aquatic restoration activities would not be restricted to the phased areas.



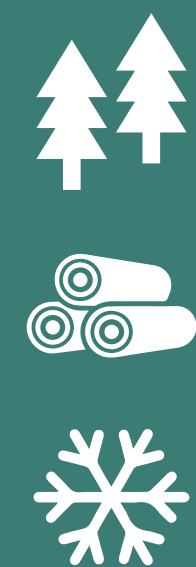
Site Access and Preparation



- Repair/maintain roads leading to the unit
- Repair stream crossings to ensure roads leading to the unit are stable



Forest and Aquatic Restoration



- Complete forest thinning treatment
- Place large wood in tributaries
- Maintain and winterize access roads as needed between field seasons



Road Removal or Maintenance Activities



Complete road removal activities

Repair roads to be retained

IS/EA Milestones

**JULY
2018**

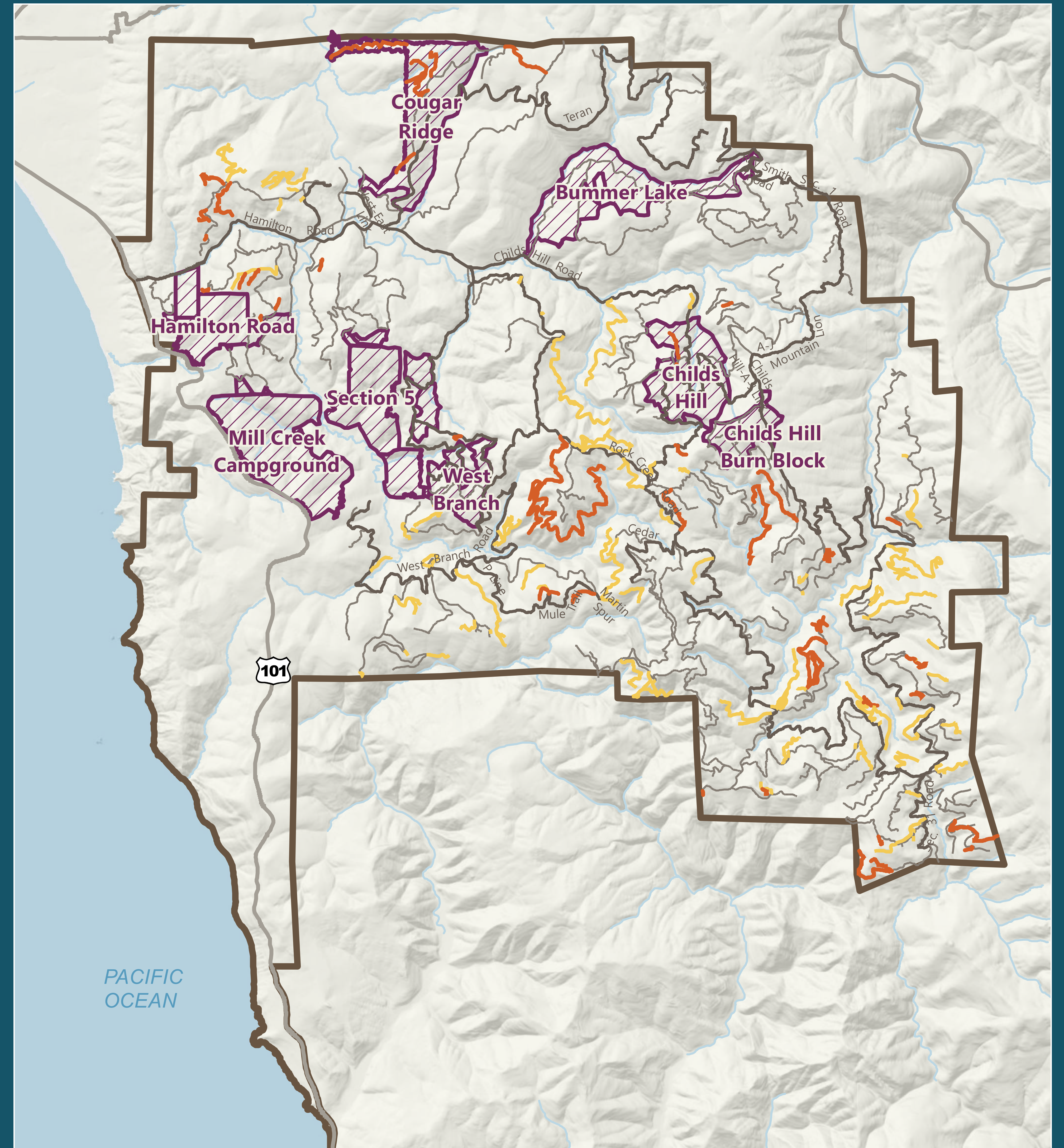
Public and Agency Scoping


EARLY 2019

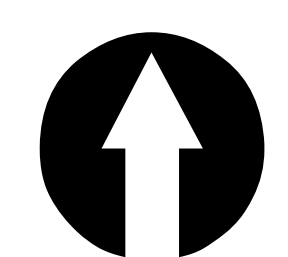
Release of Draft IS/EA

SUMMER 2019

Issuance of Decision Documents



-  Phase 1 Areas
  Minor Route
-  GMC Restoration Area
 Primary Route
-  Phase I Road Removal
  Highway or Major Public Road
-  Road Removal (CDPR)



A number line representing a distance of 1 mile. The line starts at 0 and ends at 1. There are three tick marks between 0 and 1, dividing the segment into four equal parts. The segments are labeled 1, 2, 3, and 4 from left to right.