



United States Department of the Interior
NATIONAL PARK SERVICE

Yosemite National Park
P. O. Box 577
Yosemite, California 95389

IN REPLY REFER TO:
L7615(YOSE-PM)

Memorandum

To: Ruth Middlecamp, Project Manager, Yosemite National Park

From: Superintendent, Yosemite National Park

Subject: NEPA and NHPA Clearance: Tracking #2018-004: 2018 Commercial Stock Use Commercial Use Authorization (78845)

The Superintendent and park interdisciplinary team have reviewed the proposed project and completed an impact analysis and documentation, and have determined the following:

- There will not be any effect on threatened, endangered, or rare species and/or their critical habitat.
- There will be no adverse effect to historic properties.
- There will not be serious or long-term undesirable environmental or visual effects.

The subject proposed project, therefore, is now cleared for all NEPA and NHPA compliance requirements as presented above. Project plans and specifications are approved and construction and/or project implementation can commence.

For the proposed project actions to be within compliance requirements during construction and/or project implementation, the following mitigations must be adhered to:

- To avoid or minimize potential new disturbances to culturally significant sites, commercial use authorization holders must limit their activities to previously used areas. The interdisciplinary stock group should continue to address ethnographic and archeological resource issues at stock use areas, inventory camp site locations, improve GIS data, develop draft best management practices, and implement protection measures when possible.

Recommendations for Conditions or Stipulations: None

For complete compliance information see PEPC Project 78845.

//Michael T. Reynolds//
Michael T. Reynolds, Superintendent

Enclosure (with attachments)

cc: Statutory Compliance File

Letter of Compliance Completion – 2018-004 Parkwide Programmatic CE- 2018 Commercial Stock Use Commercial Use Authorization - PEPC ID: 78845

*The signed original of this document is on file at the
Environmental Planning and Compliance Office in
Yosemite National Park.*



Categorical Exclusion Form

Project: Tracking #2018-004: 2018 Commercial Stock Use Commercial Use Authorization

PEPC Project Number: 78845

Project Description:

The purpose of this project is to issue Commercial Use Authorizations (CUAs) to approved commercial stock users for the 2018 season in Yosemite National Park. Stock trips typically do not begin until around Memorial Day weekend, depending on weather and trail conditions. The authorization will expire after October 31, 2018.

Commercial stock outfitters (herein referred to as Holders) are required to obtain a CUA each year prior to bringing clients and stock into Yosemite National Park. The CUA allows Holders to provide guided day rides, full service pack trips and/or pack support trips for backpackers with the use of pack stock. In addition, Holders are authorized to work under contract with the National Park Service to provide stock services for administrative purposes. Holders are required to originate and terminate pack trips outside of the park boundary unless authorized by the Superintendent. Holders are required to use designated camp areas when travelling overnight in the wilderness. Holders are regulated by the terms and conditions of the Commercial Use Authorization which is administered and managed by Yosemite National Park, Commercial Use Office in conjunction with the Yosemite Wilderness Office. Each permitted Holder is limited to a maximum number of annual visitor use nights and stock nights.

Stock camp information and maps, along with Kerrick Meadow grazing information and map are located in the appendices of the CUA.

Project Locations:

Mariposa, Madera, Mono, and Tuolumne Counties, CA

Mitigations:

- To avoid or minimize potential new disturbances to culturally significant sites, commercial use authorization holders must limit their activities to previously used areas. The interdisciplinary stock group should continue to address ethnographic and archeological resource issues at stock use areas, inventory camp site locations, improve GIS data, develop draft best management practices, and implement protection measures when possible.

CE Citation: A.6 Commercial use licenses involving no construction.

Decision: I find that the action fits within the categorical exclusion above. Therefore, I am categorically excluding the described project from further NEPA analysis. No extraordinary circumstances apply.

Superintendent: //Michael T. Reynolds//

Michael T. Reynolds

Date: 6/8/18

*The signed original of this document is on file at the
Environmental Planning and Compliance Office in
Yosemite National Park.*

Extraordinary Circumstances:

If implemented, would the proposal...	Yes/No	Notes
A. Have significant impacts on public health or safety?	No	
B. Have significant impacts on such natural resources and unique geographic characteristics as historic or cultural resources; park, recreation, or refuge lands; wilderness areas; wild or scenic rivers; national natural landmarks; sole or principal drinking water aquifers; prime farmlands; wetlands (Executive Order 11990); floodplains (Executive Order 11988); national monuments; migratory birds; and other ecologically significant or critical areas?	No	
C. Have highly controversial environmental effects or involve unresolved conflicts concerning alternative uses of available resources (NEPA section 102(2)(E))?	No	
D. Have highly uncertain and potentially significant environmental effects or involve unique or unknown environmental risks?	No	
E. Establish a precedent for future action or represent a decision in principle about future actions with potentially significant environmental effects?	No	
F. Have a direct relationship to other actions with individually insignificant, but cumulatively significant, environmental effects?	No	
G. Have significant impacts on properties listed or eligible for listing on the National Register of Historic Places, as determined by either the bureau or office?	No	
H. Have significant impacts on species listed or proposed to be listed on the List of Endangered or Threatened Species, or have significant impacts on designated Critical Habitat for these species?	No	
I. Violate a federal, state, local or tribal law or requirement imposed for the protection of the environment?	No	
J. Have a disproportionately high and adverse effect on low income or minority populations (EO 12898)?	No	
K. Limit access to and ceremonial use of Indian sacred sites on federal lands by Indian religious practitioners or adversely affect the physical integrity of such sacred sites (EO 130007)?	No	
L. Contribute to the introduction, continued existence, or spread of noxious weeds or non-native invasive species known to occur in the area or actions that may promote the introduction, growth, or expansion of the range of such species (Federal Noxious Weed Control Act and Executive Order 13112)?	No	



ENVIRONMENTAL SCREENING FORM (ESF)

Updated Sept 2015 per NPS NEPA Handbook

A. PROJECT INFORMATION

Project Title: Tracking #2018-004: 2018 Commercial Stock Use Commercial Use Authorization
PEPC Project Number: 78845
Project Type: Commercial Use Authorization (CUP)
Project Location:
County, State: Mariposa, California
County, State: Madera, California
County, State: Mono, California
County, State: Tuolumne, California
Project Leader: Ruth Middlecamp

B. RESOURCE IMPACTS TO CONSIDER:

Resource	Potential for Impact	Potential Issues & Impacts
Air Air Quality	None	
Biological Nonnative or Exotic Species	Potential	The use of weed free feed is strongly encouraged by the park and is stated in the commercial use authorization to prevent introduction of non-native plants.
Biological Species of Special Concern or Their Habitat	None	
Biological Vegetation	Potential	Feeding or salting will not be allowed in meadows. Rocky or timbered areas will be used to hold stock for the purpose of feeding. The CUA holder must follow park direction on grazing (available in appendices 1 and 2 of the CUA).
Biological Wildlife and/or Wildlife Habitat including terrestrial and aquatic species	Potential	All CUA holders are required to follow park regulations for food storage, and educate paying customers and staff on proper food storage techniques in Yosemite.
Cultural Archeological	Potential	As part of an ongoing project, an interdisciplinary group of resource specialists continue to address resource concerns related to commercial

Environmental Screening Form (ESF) – 2018-004 Parkwide Programmatic CE- 2018 Commercial Stock Use Commercial Use Authorization - PEPC ID: 78845

Resource	Potential for Impact	Potential Issues & Impacts
Resources		stock use. As part of an ongoing condition assessment, park archeology staff plans to monitor the condition of three sensitive resources located in Virginia Canyon, Dorothy Lake, and Benson Lake. Commercial use authorization holders are advised to limit their activities to previously used areas in order to avoid potential new disturbances to resources that may exist in these locations.
Cultural Cultural Landscapes	None	
Cultural Ethnographic Resources	Potential	This project went on the March 2018 Tribal Spreadsheet as an informational item. No comments were received.
Cultural Museum Collections	None	
Cultural Prehistoric/historic structures	None	
Geological Geologic Features	None	
Geological Geologic Processes	None	
Lightsapes Lightsapes	None	
Other Human Health and Safety	Potential	One person on each guided trip must have a first aid certification card.
Other Operational	None	
Socioeconomic Land Use	None	
Socioeconomic Minority and low-income populations, size, migration patterns, etc.	None	
Socioeconomic Socioeconomic	None	
Soundsapes Soundsapes	None	
Viewsheds Viewsheds	None	

Resource	Potential for Impact	Potential Issues & Impacts
Visitor Use and Experience Recreation Resources	None	
Visitor Use and Experience Visitor Use and Experience	None	
Water Floodplains	None	
Water Marine or Estuarine Resources	None	
Water Water Quality or Quantity	Potential	Each CUA holder is responsible for training employees and practicing proper Leave-No-Trace to protect watersheds from contamination.
Water Wetlands	Potential	Watering of stock from creeks and stock grazing in meadows may occur near stock camps.
Water Wild and Scenic River	Potential	Commercial stock use can occur in both the Tuolumne and Merced River Corridors.
Wilderness Wilderness	Potential	As a commercial service the activity requires a determination of extent necessary, which is being developed by the Yosemite Wilderness Office.



ASSESSMENT OF ACTIONS HAVING AN EFFECT ON HISTORIC PROPERTIES

A. DESCRIPTION OF UNDERTAKING

1. **Park:** Yosemite National Park

2. **Project Description:**

Project Name: Tracking #2018-004: 2018 Commercial Stock Use Commercial Use Authorization

Prepared by: Renea Kennec **Date Prepared:** 03/30/2018 **Telephone:** 209-379-1038

PEPC Project Number: 78845

Locations:

County, State: Mariposa, Madera, Mono, and Tuolumne Counties, CA

Area of potential effects (as defined in 36 CFR 800.16[d])

3. **Has the area of potential effects been surveyed to identify historic properties?**

No

Yes

Source or reference:

4. **Potentially Affected Resources:**

Archeological Resources Affected: Yes

Archeological Resources Notes: This is parkwide permit; presence/absence of resources determined on a site by site basis.

Historical Structures/Resources Affected: Yes

Historical Structures/Resources Notes: This is parkwide permit; presence/absence of resources determined on a site by site basis.

Cultural Landscapes Affected: No

Ethnographic Resources Affected: Yes

Ethnographic Resources Notes: This is parkwide permit; presence/absence of resources determined on a site by site basis.

5. **The proposed action will: (check as many as apply)**

No Destroy, remove, or alter features/elements from a historic structure

- No Replace historic features/elements in kind
- No Add non-historic features/elements to a historic structure
- No Alter or remove features/elements of a historic setting or environment (inc. terrain)
- No Add non-historic features/elements (inc. visual, audible, or atmospheric) to a historic setting or cultural landscape
- No Disturb, destroy, or make archeological resources inaccessible
- No Disturb, destroy, or make ethnographic resources inaccessible
- No Potentially affect presently unidentified cultural resources
- No Begin or contribute to deterioration of historic features, terrain, setting, landscape elements, or archeological or ethnographic resources
- No Involve a real property transaction (exchange, sale, or lease of land or structures)
- Other (please specify): _____

6. Supporting Study Data:

(Attach if feasible; if action is in a plan, EA or EIS, give name and project or page number.)

B. REVIEWS BY CULTURAL RESOURCE SPECIALISTS

The park 106 coordinator requested review by the park's cultural resource specialist/advisors as indicated by check-off boxes or as follows:

106 Advisor

Name: Kimball Koch

Date: 05/15/2018

Comments: Per review by the park archeologist/historian, known areas of historical sites are specifically excluded as use areas under the Commercial Use Authorization. Historical architect review not required due to no historic structures/buildings being present.

Check if project does not involve ground disturbance []

Assessment of Effect: No Potential to Cause Effect No Historic Properties Affected No

Adverse Effect Adverse Effect Streamlined Review

Recommendations for conditions or stipulations:

Doc Method: Park Specific or Other Programmatic Agreement

Anthropologist

Name: Scott Carpenter

Date: 05/09/2018

Check if project does not involve ground disturbance []

Assessment of Effect: No Potential to Cause Effect No Historic Properties Affected No

Adverse Effect Adverse Effect Streamlined Review

Recommendations for conditions or stipulations:

Doc Method: Park Specific or Other Programmatic Agreement

Archeologist

Name: Scott Carpenter

Date: 04/23/2018

Comments: Known areas of archeological sites are specifically excluded as use areas under the Commercial Use Authorization.

Check if project does not involve ground disturbance []

Assessment of Effect: No Potential to Cause Effect No Historic Properties Affected No

Adverse Effect Adverse Effect Streamlined Review

Recommendations for conditions or stipulations:

Doc Method: Park Specific or Other Programmatic Agreement

Historian

Name: Scott Carpenter

Date: 04/23/2018

Comments: Known areas of historical sites are specifically excluded as use areas under the Commercial Use Authorization. Historical architect review not required due to no historic structures/buildings being present.

Check if project does not involve ground disturbance []

Assessment of Effect: No Potential to Cause Effect No Historic Properties Affected No

Adverse Effect Adverse Effect Streamlined Review

Recommendations for conditions or stipulations:

Doc Method: Park Specific or Other Programmatic Agreement

Historical Landscape Architect

Name: Kimball Koch

Date: 04/23/2018

Comments: No historic cultural landscapes inventoried within areas addressed under the Commercial Use Authorization.

Check if project does not involve ground disturbance []

Assessment of Effect: No Potential to Cause Effect No Historic Properties Affected No

Adverse Effect Adverse Effect Streamlined Review

Recommendations for conditions or stipulations:

Doc Method: Park Specific or Other Programmatic Agreement

No Reviews From: Curator, Historical Architect, or Other Advisor

C. PARK SECTION 106 COORDINATOR'S REVIEW AND RECOMMENDATIONS

1. Assessment of Effect:

Assessment of Effect Form – 2018-004 Parkwide Programmatic CE, 2018 Commercial Stock Use Commercial Use Authorization - PEPC ID: 78845

- No Potential to Cause Effects
 No Historic Properties Affected
 No Adverse Effect
 Adverse Effect

2. Documentation Method:

A. Standard 36 CFR Part 800 Consultation
Further consultation under 36 CFR Part 800 is needed.

B. Streamlined Review Under the 2008 Servicewide Programmatic Agreement (PA)
The above action meets all conditions for a streamlined review under section III of the 2008 Servicewide PA for Section 106 compliance.

Applicable Streamlined Preview Criteria
(Specify 1-16 of the list of streamlined review criteria.)

C. Undertaking Related to Park Specific or Another Agreement
The proposed undertaking is covered for Section 106 purposes under another document such as a park, region or statewide agreement established in accord with 36 CFR 800.7 or 36 CFR 800.14.
Documentation amends existing 2017 Commercial Use Authorization.

D. Combined NEPA/NHPA Process
Process and documentation required for the preparation of an EA/FONSI or an EIS/ROD to comply with Section 106 is in accord with 36 CFR 800.8.c.

E. Memo to Project File

3. Consultation Information

THPO Required: Yes
THPO Sent: Mar 5, 2018
THPO Notes:

Advisory Council Participating: No
Additional Consulting Parties: No

4. Stipulations and Conditions: Following are listed any stipulations or conditions necessary to ensure that the assessment of effect above is consistent with 36 CFR Part 800 criteria of effect or to avoid or reduce potential adverse effects.

5. Mitigations/Treatment Measures: Measures to prevent or minimize loss or impairment of historic/prehistoric properties: (Remember that setting, location, and use may be relevant.)

- Assessment of Effect - To avoid or minimize potential new disturbances to culturally significant sites, commercial use authorization holders are highly recommended to limit their activities to previously used areas. The park interdisciplinary stock group should continue to address ethnographic and archeological resource issues at stock use areas, inventory camp site locations, improve GIS data, develop draft best management practices, and implement protection measures when possible.

6. Assessment of Effect Notes:

Previous 106 review and signoffs (1999 PA) are not affected by opening dates and grazing capacities.

D. RECOMMENDED BY PARK SECTION 106 COORDINATOR:

Kimball Koch //Kimball Koch// **Date:** 6/5/18

E. SUPERINTENDENT'S APPROVAL

The proposed work conforms to the NPS *Management Policies* and *Cultural Resource Management Guideline*, and I have reviewed and approve the recommendations, stipulations, or conditions noted in Section C of this form.

Superintendent: //Michael T. Reynolds// **Date:** 6/8/18
Michael T. Reynolds

The signed original of this document is on file at the Environmental Planning and Compliance Office in Yosemite National Park.

UNITED STATES DEPARTMENT OF THE INTERIOR
National Park Service

YOSEMITE NATIONAL PARK
Park Contact: Ruth Middlecamp
Phone Number: 209-379-1851

COMMERCIAL USE AUTHORIZATION
UNDER THE AUTHORITY OF P.L. 105-391 Section 418, (54 U.S.C. 101925)

1. AUTHORIZED ACTIVITY:

Commercial Guiding: STOCK USE

Permit Number: YOSE-18-

Park Alpha-Number

2 Authorization Holder Information:

Authorization Date: MAY 01, 2018

Business Name ↓

Expiration Date: OCTOBER 31, 2018

Contact Name ↓

Name of Area: Yosemite National Park

Mailing Address ↓

City, State, Zip ↓

Telephone ↓

↓ FAX

3. The holder is hereby authorized to use the following described land or facilities in the above named area (area must be restored to its original condition at the end of the authorization): **Areas within Yosemite National Park open to the general public and designated by the attached permit conditions and attachments.**

4. **Summary of authorized activity:** The holder is authorized to conduct Guided Day Rides, Full Service Pack Trips, Spot Pack Trips, Continuous Hire Trips and NPS Administrative Trips. (Holder is restricted to no more than ### visitor use nights and ### stock use nights.) (See attached sheets for conditions, maps and additional information.)

Out- of- Park: The commercial services described above must originate and terminate outside of the boundaries of the park area. This permit does not authorize the holder to advertise, solicit business, collect fees, or sell any goods or services within the boundaries of the park area.

In-Park: The commercial service described above must originate and be provided solely within the boundaries of the park area.

4. NEPA/NHPA Compliance:

Categorical Exclusion EA/FONSI EIS Other Approved Plans PEPC NUMBER: 78845

5. Reasonable fee: (Cost recovery required at a minimum)

Application Fee:	<input type="checkbox"/> Required	Amount <u>\$100.00</u>	Received	_____
Administrative Fee:	<input checked="" type="checkbox"/> Required	<input type="checkbox"/> Not Required	Amount	<u>\$450.00</u>
Management Fee:	<input type="checkbox"/> Required	<input type="checkbox"/> Not Required	Amount	_____
Market Price:	<input type="checkbox"/> Required	<input type="checkbox"/> Not Required	Amount	_____
Other Fee	<input type="checkbox"/> Required	<input type="checkbox"/> Not Required	Amount	_____

Insurance:

Liability: Required Not Required Coverage Amount \$1 Million per occurrence
Auto: Required Not Required Coverage Amount As required by USDOT or CA PUC

ISSUANCE of this authorization is subject to the conditions below. The undersigned hereby accepts this authorization subject to the terms, covenants, obligations, and reservations, expressed or implied herein.

6. SIGNATURES

Authorization Holder: _____
Signature Title Date

Authorizing NPS Acting
Official: _____
Signature Title Date
Chief of Business & Revenue Mgmt.

CONDITIONS OF THIS AUTHORIZATION

1. **False Information:** The holder is prohibited from knowingly giving false information. To do so will be considered a breach of conditions and be grounds for revocation: [RE: 36 CFR 2.32(a) (3)].
2. **Legal Compliance:** The holder shall exercise this privilege subject to the supervision of the park area Superintendent. The holder shall comply with all applicable laws and regulations of the area and terms and conditions of the authorization. The holder must acquire all permits or licenses of State or local compliance with all applicable Federal, State, and local laws and regulations, including, without limitation, all applicable park area policies, procedures and regulations. The commercial services described above are to be provided to park area visitors at reasonable rates and under operating conditions satisfactory to the park area superintendent.
3. **Rates:** The holder shall provide commercial services under this authorization to visitors at reasonable rates and under operating conditions satisfactory to the area Superintendent.
4. **Liabilities and Claims:** This authorization is issued upon the express condition that the United States, its agents and employees shall be free from all liabilities and claims for damages and/or suits for or by reason of any injury, injuries, or death to any person or persons or property of any kind whatsoever, whether to the person or property of the (holder), its agents or employees, or third parties, from any cause or causes whatsoever while in or upon said premises or any part thereof during the term of this authorization or occasioned by any occupancy or use of said premises or any activity carried on by the (holder) in connection herewith, and the (holder) hereby covenants and agrees to indemnify, defend, save and hold harmless the United States, its agents, and employees from all liabilities, charges, expenses and costs on account of or by reason of any such injuries, deaths, liabilities, claims, suits or losses however occurring or damages growing out of the same.
5. **Insurance:** The holder agrees to carry **general liability** insurance against claims occasioned by the action or omissions of the holder, its agents and employees in carrying out activities and operations under this authorization. The policy shall name the United States of America as additional insured. Holder agrees to have on file with the park copies of the above insurance with the proper endorsements. (*Refer to condition #22 for Vehicle Liability coverage requirements.*)
6. **Fees:** The holder shall reimburse the park for all costs incurred by the park as a result of accepting and processing the application and managing and monitoring the authorization activity. Administrative costs for the application process must be paid when the application is submitted. Monitoring fees and any additional costs incurred by the park to support the commercial activity will be paid annually at the end of the year.
7. **Benefit:** No member of, or delegate to, Congress, or Resident Commissioner shall be admitted to any share or part of this Contract or to any benefit that may arise from this Contract. This restriction shall not be construed to extend to this Contract if made with a corporation or company for its general benefit.
8. **Transfer:** This authorization may not be transferred or assigned without the written consent of the park area Superintendent.
9. **Termination:** This authorization may be terminated upon breach of any of the conditions herein or at the discretion of the park area Superintendent.
10. **Preference or Exclusivity:** The holder is not entitled to any preference to renewal of this authorization except to the extent otherwise expressly provided by law. This authorization is not exclusive and is not a concession contract.
11. **Construction:** The holder shall not construct any structures, fixtures or improvements in the park area. The holder shall not engage in any groundbreaking activities without the express, written approval of the park area Superintendent.
12. **Reporting:** The holder is to provide the park area Superintendent upon request (and, in any event, immediately after expiration of this authorization) a statement of its gross receipts from its activities under this authorization and any other specific information related to the holder's operations that the park area superintendent may request, including but not limited to, visitor use statistics, and resource impact assessments.

13. **Accounting:** The holder is to maintain an accounting system under which its accounts can be readily identified within its system of accounts classification. This accounting system must be capable of providing the information required by this authorization. The holder grants the United States of America and the Government Accountability Office access to its books and records at any time for the purpose of determining compliance with the terms and conditions of this authorization.
14. **Minimum Wage:** The holder is required to adhere to Executive Order 13658 – Establishing a Minimum Wage for Contractors, as applicable. The implementing regulations, including the applicable contract clause, are incorporated by reference into this contract as if fully set forth in this contract and available at <https://federalregister.gov/a/2014-23533>.
15. **Visitor Acknowledgment of Risks (VAR):** The holder is not permitted to require clients to sign a waiver of liability statement or form, insurance disclaimer, and/or indemnification agreement waiving the client’s right to hold the CUA holder responsible for accidents or injury occurring on NPS property. The holder is permitted to request or require a client to sign a form or statement acknowledging risk and/or indicating that certain prerequisite skills may be needed to participate in the commercial activity. The holder must provide the park with the current copy of all forms and/or statements used for this purpose and obtain written approval by the park. A sample Acknowledgment of Risk form may be obtained by contacting the CUA office at 209-379-1853 or by going to the park CUA webpage at <https://www.nps.gov/yose/getinvolved/dobusinesswithus.htm>.
16. **Intellectual Property of the National Park Service:** Except with the written authorization of the Director of the National Park Service, the Holder shall not assert any legal claim that the Holder or any related entity holds a trademark, tradename, servicemark or other ownership interest in the words "National Park Services", the initials "NPS", or official name of any unit or part thereof, including but not limited to any facility, logo, distinctive natural, archaeological, cultural, or historic site, within the National Park System, or any colorable likeness thereof, or the likeness of a National Park Service official uniform, badge, logo, or insignia.
17. **Nondiscrimination:** The holder must comply with Applicable Laws relating to nondiscrimination in providing visitor services to the public and with all equal employment opportunity provisions of Title VII of the Civil Rights Act, as amended.

**APPENDIX
SPECIAL PARK CONDITIONS**

Reference copies of the Yosemite National Park 36 C.F.R. 1.7(b) Superintendent’s Compendium and of 36 CFR Part 1-199 ; are available on the internet at <http://www.nps.gov/yose/parkmgmt/lawsandpolicies.htm>, The Wilderness Management Plan (approved 1989) is available from the Research Library.

In an effort to work cooperatively in managing and protecting park resources this office will endeavor to maintain positive communication with the commercial stock users. Information regarding the use and management of identified sensitive resources and resource areas which may be affected by the authorized activity will be disseminated through direct consultation, written and electronic notices, and/or group meetings.

18. DEFINITIONS:

Holder: For the purpose of this Authorization the word “Holder” shall include employees and/or agents of the company issued this Authorization.

Authorization/Permit: The terms “Authorization” and “Permit” shall be used interchangeably in reference to the Commercial Use Authorization

Backpacking/Backpacker: For the purpose of this Authorization the term(s) “Backpacking” and or “Backpacker” refer to the user or use of the Yosemite wilderness by any person or group for trips which occur overnight in the wilderness and where a Yosemite Wilderness Permit is required.

Developed Area(s): For the purpose of this Authorization the term ”Developed Area(s)” is defined as those areas and trails outside of designated wilderness, such as roadside vistas, developed visitor facilities and/or walkways, e.g. the Tuolumne visitor services areas, parking lots, roadways etc.

Wilderness: For the purpose of this Authorization the term “Wilderness” is defined as those areas designated as Wilderness and/or areas where wilderness use permits are required and/or where wilderness regulations apply, e.g. the Lyell Canyon, Mono Meadow Trail, Rancheria Falls Trail, etc.

Commercial Transportation: For the purpose of this Authorization the term “Commercial Transportation” shall mean the transportation by the Holder of any client, by any motor vehicle owned and/or operated by the Holder within areas of Yosemite National Park, whether, or not, it is incidental to the commercial operation.

Day Hike/Day Hiker/Hiker: For the purpose of this Authorization the term(s) “Day Hike”, “Day Hiker” and or “Hiker” refers to the use of the front-country and/or wilderness by any person or group for day trips only, and where a Yosemite Wilderness Permit is not required.

Food: For the purpose of this Authorization the term “Food” shall include any human food, pet food, grain or other sweet stock food, food-tainted garbage, food-tainted equipment, toiletries such as soap, toothpaste, and cosmetics, and any creams, ointments or lotions.

Full Service Trip: For the purpose of this Authorization the term “Full Service Trip” is defined as a trip where the packer, stock, and cook stay with client(s), preparing and maintaining camp and offering client services such as day rides and meals. The Holder is responsible for obtaining a valid Wilderness Permit.

Spot Trip: For the purpose of this Authorization the term “Spot Trip” or “Spot Pack Trip” is defined as a trip where the client either hikes or is taken by horseback, which may include pack animal, to their campsite and left. The Holder does not stay with the client; the Holder may or may not return on a predetermined date to pick up the client. The client is responsible for obtaining a valid Wilderness Permit for their party however, if the Holder overnights in the Yosemite Wilderness they will need to have a separate valid Wilderness Permit or be included on the client’s permit. (To be included on the clients permit the guide must stay in camp with the client.)

Continuous Hire Trip: For the purpose of this Authorization the term “Continuous Hire” is defined as a trip where the packer, and stock, support a client by moving gear/equipment from point to point, but do not prepare/maintain the camp or offer any other client services other than moving gear/equipment.” The Holder must have a valid Wilderness Permit, either being included on the client’s permit or separately depending if they camp in the same area as the client.

NPS Administrative Hire Trip: For the purpose of this Authorization the term “NPS Administrative Hire” or “Administrative Trip” is defined as a trip initiated by Yosemite National Park and conducted for Park Service administrative purposes such as moving science research teams and equipment.

Stock: For the purpose of this Authorization the term “Stock” shall mean horses, mules, burros and/or llamas.

This permit is only applicable for, use of the area(s), the activities and terms designated in this permit. This permit is not valid until signed by the Superintendent or authorized agent thereof.

19. Visitor Acknowledgement of Risk (Release of Liability): The CUA holder may not request or require guests or clients participating in activities to sign a liability waiver form, insurance disclaimer and/or indemnification (hold-harmless) agreement. The CUA holder may require guest or clients participating in activities authorized under this CUA to sign a Visitor Acknowledgement of Risk (VAR) form. The VAR must contain a description of the risks involved in the activity. A template of a National Park Service-approved Visitor Acknowledgment of Risk form is available on the Yosemite National Park website at <http://www.nps.gov/yose/planyourvisit/permits.htm>. The VAR form that the CUA holder will use must be submitted to the park within 60 days of the effective date of the CUA for approval.

20. Carry Permit: The Holder is required to carry a valid copy of page 1 (cover page) of this authorization while operating within the park.

- 21. Use Limits** - It is expressly understood that the Superintendent may impose public use limits based upon his authority stated in Title 36 of the Code of Federal Regulations, Section 1.5. Furthermore, **it is understood that possession of this authorization does not guarantee entry into Yosemite National Park or access to all areas of the park**, and that entrance into the park or designated areas within the park may be closed or restricted from time to time in response to crowded conditions, natural events or other administrative purposes. It is also understood that access to Yosemite National Park and designated areas within the park may be restricted in the future to protect park resources and assure quality visitor experiences, or due to the implementation of special park projects.
- A. The Holder is restricted to the annual number of visitors and stock use nights listed on page one (1) of this Authorization as well as group size limits for individual trips.
- 22. Commercial Vehicle Liability** - (Refer to condition #5 for General liability coverage requirements.)
- A. **Vehicle Liability.** The holder shall provide comprehensive vehicle liability insurance against claims occasioned by actions or omissions of the holder in carrying out the activities and operations authorized hereunder. The holder shall provide insurance coverage based upon the largest capacity vehicle it will operate in the park. (This includes pickup trucks and stock trailers.) Such insurance shall be in the amount commensurate with the degree of risk and the scope and size of such activities authorized herein, but in any event when operating passenger transportation vehicles, the limits of liability shall not be less than limits set by the Federal Motor Carrier Safety Administration (FMCSA) for interstate motor carriers and by the California Public Utilities Commission (CPUC) for California based motor carriers.
- | | <i>Amount of Coverage</i> | <i>Vehicle Seating Capacity</i> |
|-----|---------------------------|--|
| (1) | \$750,000 | for any vehicle with a seating capacity of 7 passengers or less. (CPUC) |
| (2) | \$1,500,000 | for any vehicle with a seating capacity of 15 passengers or less. (FMCSA) |
| | Or - | for any vehicle with a seating capacity 8 passengers through 15 passengers, inclusive (CPUC) |
| (3) | \$5,000,000 | for any vehicle with a seating capacity of 16 passengers or more.(FMCSA & CPUC) |
- B. The holder shall purchase at a minimum the types and amounts of insurance coverage as stated herein and agree to comply with any revised insurance limits the Director may require during the term of this authorization.
- C. The holder shall provide the Superintendent with a Statement of Insurance and Certificate of Insurance at the inception of this authorization and upon renewal of insurance thereafter, and shall provide the Superintendent thirty (30) days advance written notice of any material change in the holder's insurance program hereunder.
- D. The Superintendent will not be responsible for any omissions or inadequacies of insurance coverage and amounts if such prove to be inadequate or otherwise insufficient for any reason whatsoever.
- 23. Suspension of CUA** –Failure to comply with the conditions of this authorization or applicable regulations may result in the temporary suspension or revocation of this CUA. (Refer to condition #2 & #9.
- 24. Compliance** –The holder shall exercise this privilege subject to the supervision of the Superintendent, and shall comply with all applicable regulations of the area. The holder and all participants authorized herein must comply with all of the conditions of this Authorization including all exhibits, amendments, or written directions of the park Superintendent. The holder will comply with any special instructions received from the Superintendent, or representative thereof, both written and or verbal, concerning operations within Yosemite National Park.
- 25. Purpose** - In accepting this authorization, the holder acknowledges that the proposed activity, in order to qualify for a Commercial Use Authorization (CUA), must bear a direct relationship to the purpose for which the park was established; *for example*, visitor understanding and enjoyment of the park.
- 26. Business/Revenue Base** - It is understood that the holder shall not develop a business based on revenues generated through visiting Yosemite National Park.
- 27. Solicitation** - This Authorization does not permit the Holder to advertise, solicit business, collect any fees, or sell any goods or services on lands owned and controlled by the United States.

- 28. Advertising** -Advertising for the authorized activity (CUA) shall not state or imply endorsement by the National Park Service or Yosemite National Park. Commercial photography or commercial filming, within the park, requires a separate filming permit and must be approved by the Superintendent. Commercial film and commercial photography permits, as identified and required by 36 CFR 5.5, Section 8.6.6 of National Park Service Management Policies, and Director's Order #53, will not be approved in wilderness areas unless determined to be necessary and proper for providing educational information about wilderness uses, resources or values, or necessary for other wilderness purposes. Commercial still photography activities that include the use of models, sets or props or promote a product or service are prohibited in wilderness. (Contact the Office of Special Park Uses at 209-379-1858 for information.)
- 29. Use of NPS Arrowhead Symbol:** The NPS Arrowhead symbol is protected by the trademark laws of the United States as a registered service mark. The permittee is not authorized to use the NPS Arrowhead symbol in any manner unless first approved in writing by the Director of the National Park Service. (Refer to Title 36 CFR, part 11.)
- 30. Additional Permits** – It is the responsibility of the Holder to obtain any additional permits for activities not covered under this CUA. For additional information or permits regarding additional tour activities contact the Commercial Use Office (209) 379-1851.
- 31. Entrance Fees**– The holder agrees to pay the applicable entrance fees rate in effect at the time of arrival at the park entrance station or designated fee collection site. (The park entrance fee allows for a seven (7) consecutive day visit. Company guides will not be charged the entrance fee when entering for purposes of conducting the activity authorized under this CUA. Clients entering the park in their personal vehicles will be charged the applicable “private vehicle” entrance fee rate. Clients travelling in a holder operated vehicle will be charged the individual fee applicable at the time of entry. Clients who own a National Park Pass may use the pass to cover their individual fee or their private vehicle entrance fee. National Park Passes may not be used by commercial companies for entry into Yosemite. Further information about the America the Beautiful pass program may be found at <http://www.nps.gov/findapark/passes.htm>. Attempting to avoid payment of appropriate fees is a violation of federal law. **Any attempt at avoiding payment of the appropriate entrance fees will result in the revocation of this authorization and the holder will subject to possible criminal prosecution.**
- 32. Harassment**-Harassment of, and/or threats to park visitors or any National Park Service employee by the Holder will result in the suspension and/or revocation of this Authorization.
- 33. Safety** - The Holder shall take every reasonable precaution to ensure the safety of its clients, its employees, other park visitors, and park employees.
- 34. Damage** - The Holder shall pay the United States Government for any damage(s) resulting from this special use which would not reasonably be inherent in the use which the Holder is authorized to make, as described in this Authorization.
- 35. Addition of Clients:** Additional customers may not be added to the group while the Holder is in the park. (*Exception: A hiker who is seriously ill or injured and requests evacuation by horseback may be added if the Holder deems it safe and appropriate to do so, and contact with NPS for EMS assistance would be delayed.* The Holder must notify the Commercial Use Office of the incident as soon as possible, by phone or email.) All bookings and financial transactions must take place outside of the Park.
- 36. Wilderness Use Permits** - Permits for backcountry camping and other reservation systems must be obtained separately from this Authorization. The Holder must identify themselves as a commercial operator and provide the CUA Permit number when obtaining a Wilderness Permit from any Yosemite National Park Wilderness Permit Station. Yosemite Wilderness Permits are required for all commercial users of the Yosemite Wilderness who begin backcountry trips at Yosemite trailheads. These permits are subject to Yosemite's trailhead quota system. This includes groups who enter the Park from a US Forest Service trailhead on a USFS permit, but spend a night in the Yosemite front-country and/or any trip that exchanges guests in a “turn-around” or “through-trip” situation at a Yosemite trailhead. **Commercial pack trips where stock are trucked or moved to Yosemite trailheads to begin a trip inside the Park are prohibited,** unless authorized by the Superintendent. (Permit reservations may be made through the park website at <http://www.nps.gov/yose/planyourvisit/backpacking.htm>. The phone number to call for assistance with wilderness permits is 209-372-0740.)

37. Outfitter Guide Permit – The Holder must obtain a valid “Outfitter Guide Permit” from the Forest Supervisor, United States Forest Service (USFS), in whose jurisdiction all trips will begin and end. A copy of the valid “Outfitter Guide Permit” signature page must be sent to the Commercial Use Office to be kept on file.

38. Holder Responsibility:

- A.) The Holder and all participants authorized herein must comply with all of the conditions of this Authorization including all conditions, exhibits, amendments, or written directions of the park superintendent. The Holder will provide training, and documentation of training upon request, for each Guide and employee regarding the terms and conditions of the CUA. The Holder is responsible for complying with all applicable rules and regulations of the park. The Holder shall insure that all employees and clients entering the park are informed of all conditions” of this Authorization, which apply to their activity and usage of the park.
- B.) Guides must be a minimum of eighteen (18) year old. The Holder shall ensure that their guides possess the knowledge, skills and experience necessary to safely lead groups on day and/or overnight trips into the park. Guides will be trained in Leave No Trace principles and tactics. The guides must have experience in the areas in which they guide and must be able to locate and use the identified traditional sites for stock camping. Guides leading clients into the park must understand the hazards involved and be properly trained and prepared for conditions and situations, which may be encountered. Guides must be familiar with the CUA, all its terms and conditions, under which they are allowed to operate in Yosemite National Park.
- C.) The Holder will cooperate in Field Evaluation when contacted by Park Rangers. The packer/guide will identify themselves as a commercial operator and present the following documents when requested by the Ranger.
 - 1. A copy of Page 1 (signature page) of a current Yosemite Stock CUA under which they are operating.
 - 2. A copy of a valid Wilderness Permit, if applicable to trip itinerary.
 - 3. At least one employee per group must have in possession a current/valid CPR certification card. If during any trip the group splits, at least one employee per group must have in possession a current/valid CPR certification card.
 - 4. At least one employee per group must have in possession a current/valid First Aid certification card. If during any trip the group splits, at least one employee per group must have in possession a current/valid First Aid certification.
- D.) The Holder shall train their employees and educate their clients to ensure that the Park’s geological, biological, historical and archeological resources are not disturbed. The Holder is responsible for informing its employees and clients of Park regulations and assuring compliance on full service trips. During trips where the Holder accompanies the client but, does not stay with them throughout their daily activities, that client, or at least one person in their group, must be in possession of a valid Yosemite Wilderness Regulation form. (The Holder is responsible for the actions of its client(s) when the group is dispersed or is unmonitored unless the Holder can show proof that the client has signed an acknowledgement of having received, understood and agreed to abide by the current wilderness regulations for the area.)

39. Supervision/Compliance: Common regulations include, but are not limited to the following.

- A. **Protection of Natural Resources & Cultural Artifacts (Historic and Prehistoric)**
The Holder will not allow employees or clients to disturb or remove any natural and/or historic and/or cultural artifacts from the park including arrowheads, rock mortars, glass bottles/jars or similar artifacts. Rocks, flowers, plants and parts of plants (alive or dead) as well as other natural resources may not be removed. Groups or individuals may not enter posted sensitive areas, including restoration areas, where negative resource impacts may result.
- A.) **Leave No Trace** – The holder should educate their clients regarding Leave No Trace Principles as they apply to the authorized activity. (Information regarding LNT principles may be found at the following link <https://lnt.org/learn/7-principles>.)

- C. **Traditional Use Areas Camping/Campfires** – *Camping* is prohibited within one hundred (100) feet of a trail, flowing stream, river or any body of water, unless designated otherwise. Camping is also prohibited in areas identified and signed by the park as sensitive resource areas including identified restoration areas. The Holder will use only those sites that have been identified, submitted and approved as traditional stock use sites. (Refer to Appendix 1, 2 & 3.) Failure to camp in or use these identified areas may result in administrative actions that limit or remove continued use by the Holder. Contact the Wilderness Office for a map of these sites. Holder will use only existing fire rings. Only dead and down wood may be used where authorized. Wood fires are prohibited above 9600 feet elevation. Holder will leave use areas and fire rings clean and garbage free. Terms and Conditions for use can be found in appendix-1. Maps of these traditional use areas can be found in appendix-2. For additional information you can call the Wilderness Office at 209-372-0347 or request the wilderness duty officer at 209-379-1992.
- D. **Food Storage**–Food and food containers must be stored by the methods outlined below at all times. Open food containers must be within 6 feet of an awake person. Any person camping within the Yosemite Wilderness is required to store food items, items carrying food scents and toiletries in National Park Service approved bear resistant food storage containers. All other food storage systems are prohibited in the Wilderness. This requirement applies during those periods when items are not being transported, consumed or prepared for consumption, or when items are unattended for a sufficient time to allow a bear access to them. Items must be kept in approved containers which are closed and secured properly. During Full Service trips the Holder is responsible for properly storing food items and stock feed, this includes grain and/or sweet stock feed. Food may not be left unattended during the day if not stored in approved food storage containers. The client is responsible for proper food storage during Spot Pack Trips or Continuous Hire Trips. (Information regarding approved food storage containers may be found at <http://www.nps.gov/yose/planyourvisit/bearcans.htm> by contacting the Yosemite Wildlife Office at 209-372-0476.)
- E. **Sanitation** –Conditions for the disposal, containerization, or carryout of human body waste have been established as follows:
- 1) In non-developed areas, solid human waste must be buried 6-inches deep in the soil or follow 36 CFR for direction. Where soil depth does not allow for a 6-inch burial, solid human waste shall be buried half the distance of the existing soil depth.
 - 2) Toilet paper and personal hygiene product must be packed out.
- F. **Removal of Trash and Refuse** - All articles that are transported into the park by the Holder must be transported out of the park. This includes all refuse and trash.
- G. **Motorized Equipment** - Wilderness Area regulations prohibit the use of motorized equipment.
- H. **Rafts and Float tubes** - The Holder will not transport rafts, boats, float tubes or other floatation devices into the wilderness.
- I. **Feeding Wildlife** - Park regulations prohibit the feeding or disturbing of any wildlife in Yosemite National Park. The Holder will communicate this regulation to their clients. An effort should be made to educate the client(s) as to the serious effects violation of this regulation may have on wildlife.
- J. **Bear Damage Reports** - The Holder shall report all bear contacts and/or bear damage incidents. (Reports may be made at any Wilderness Permit Station or by contacting the Commercial Use Office at 209-379-1851.)
- K. **Controlling Clients** - The holder shall ensure that clientele and vehicles do not obstruct vehicular or pedestrian traffic on roads, trailheads or along trails. The holder will be responsible for controlling clients at those places where the tour travels in the park. This will include keeping clients from walking in posted sensitive areas, including restoration areas, where negative resource impacts may result. The holder shall share the roads and trails with other groups ranging from private/commercial hikers to private/commercial stock user. The holder is expected to exercise courtesy and sound judgment to avoid and alleviate risks when encountering other groups, vehicles and pack animals in the park.
- L. **Fireworks** – Possession and/or use of fireworks is prohibited in the park.

- M. **Audio Disturbances**—The Holder will not transport external speaker audio devices, such as AM/FM radios and/or CD or MP3 players. Devices used with personal headphones/earplugs are allowed.
- N. **Cell Phones**—Except in the case of an emergency, the Holder should discourage the use of cell phones in areas where other hiker’s wilderness experience might be negatively impacted by their use.
- O. **Firearms**—Those persons authorized to bring livestock into the wilderness areas are permitted to carry a firearm in accordance with National Park Service regulations and California State Law. Firearms must be kept unloaded when not being used. Firearms may only be discharged for the sole purpose of dispatching injured or ill livestock, when, in the judgment of the Holder, destruction of the animal is most humane. The Holder must contact the park emergency communications center (209-379-1992) who will then notify the area district ranger/wilderness duty officer (WDO) of the action, regarding the dispatching of an animal and the coordination of the disposal of the animal carcass. The Holder may be required, at its own expense, to dispose of an animal carcass.
40. **Group Size- Group** size shall not exceed the amounts established in the Wilderness Management Plan. This shall not exceed a total of 25 head of stock and/or 15 persons total (clients, guides and employees). Stock are not allowed to travel cross country. Specific language has been added to the Superintendent’s Compendium 1.5(a) (1) [Authorized under Code of Federal Regulations, Title 36, Chapter 1.7 (b)] regarding group size. It states that any group exceeding group size limitations must split into subgroups providing:
- 1) adherence to the above group size limitations,
 - 2) wilderness trips that begin within the park start from separate trailheads (such as turnaround or through trips), and
 - 3) the group travels and camps at least ½ mile apart at all times.
41. **Stock Management**—(Reference Superintendent’s Compendium 36 CFR§ 2.16, Horses and Pack Animals)
- A. **Through or Turnaround Trips** -Overnight stays in the Park for the purpose of permitted “through” or “turn-around” trips are allowed **only** in the concessioner stable facilities. **Overnight grazing or holding stock in the wilderness without guests** is prohibited, except as described in conditions 33“Caches”.
- B. **Tuolumne Meadows Stock Loading Area** – Loading and unloading of stock is to be done in the parking lot adjacent to the concessioner stable. While traveling on trails, stock must travel in single file. Stock will be controlled to prevent off trail ravel and to prevent “short-cutting”, widening and degrading of existing trails.
- C. **New Construction**- No new structures will be built, including hitching rails, campfire rings, rock walls, drift fences, trenches or trails.
- D. **Holding Stock**-
1. **In Camp:**
Stock must be kept out of the campsite or core use area (within 50 ft. of the fire ring) except during active loading and unloading of gear and packing and unpacking of animals – at which time they may be tied to trees in the core camp. Any time stock are tied to a tree, they must be monitored to ensure that they are not causing damage. Excessive movement by a tied animal causes damage to both the tree and the soil around the tree. Animals causing damage must either be hobbled or moved to a high line to avoid causing damage. Any dirt pawed out from the base of trees must be replaced All manure must be **removed** from the campsite or core area and holding area. Manure must be broken down and scattered to promote rapid decomposition. Manure should be removed and spread at least 100 feet from water. Other than during active loading and unloading of gear and packing and unpacking of animals, stock are to be tied to a highline. Free hobbling is allowed, however, one-leg hobbling is prohibited. Stock must be picketed at least 100 feet from any stream, lake, or spring.

2. On the Trail

While on the trail stock may be temporarily tied to trees for short periods of time to allow riders to dismount for sightseeing, taking breaks, meals, snacks, etc. Anytime stock are tied to a tree, they must be monitored to ensure that they are not causing damage to the tree or ground around the tree. Excessive movement by a tied animal cause's damage to both the tree and the soil around the tree, Animals causing damage must either be hobbled or moved to avoid causing damage. Any soil pawed out from the base of trees must be replaced. If stock need to be tied for long periods of time, for example while clients are fishing or taking an extended hike, stock must be monitored or properly placed on a highline to insure minimal resource damage.

3. High Lines -A high line is a rope tied between trees for the purpose of holding stock for an extended period of time. High lines may only be placed in established holding areas (when identified) or at least (100) feet from streams or lakeshores and all watercourses, running or dry. If no established high line sites are available a temporary high line maybe placed on a durable surface where resource damage is minimal. All high line ropes must be padded sufficiently to prevent damage to the bark of the tree. Stock must be tied to the high line far enough away from the base of any tree so as to not cause damage to the tree or ground at the base of that tree. Any dirt pawed out from the base of trees must be replaced.

E. Travel and Camping - The Holder will not travel or camp more than ¼ mile off a maintained trail or access route as designated by the NPS. Off trail travel is allowed only for the purposes of watering stock, accessing a traditional use area or when authorized by the Superintendent as an authorized cross-country route. The current list of authorized cross-country trials is listed below. The Holder must contact the Yosemite Wilderness Office for information about these routes.

1. Mattie Lake Route
2. Lyell Fork of the Merced Route
3. Horse Thief Canyon Route
4. Givens Lake Route

F. Snow Removal from Trails - The Holder may not interfere with the natural process of snow melting from trails by shoveling snow from the trail; placing or shoveling ashes and/or dirt on the snow to accelerate its melting or by any other means, other than the normal movement of people and/or stock over the trail.

G. Loose Herding - Loose herding is not permitted except when reasonable or prudent to prevent injury to stock or people.

H. Open Grazing: Open grazing shall be permitted in areas of the park listed in Appendix 4-Table 1 (Meadow Opening Dates and Grazing Capacities). Grazing in the locations listed in Appendix 4-Table 1 may not begin prior to the "Meadow Opening Dates" listed in Table 1. A determination of soil moisture as a "Dry Year" "Average Year" or "Wet Year" will be communicated to the holder by Yosemite National Park once the April snow survey results are available. The holder must use the meadow opening dates listed in the column associated with the current year soil moisture heading, as designated by Yosemite National Park. (The condition for 2018 has been determined to be a "Dry Year".)

Grazing is not permitted in the vicinity of the five High Sierra Camps, where camping is not allowed or as otherwise prohibited.

In areas prohibited from grazing, packers shall be required to carry pelletized or cubed feed for their animals. If the Superintendent determines that there are substantiated risks to Park resources, the Superintendent will close that area to further grazing and/or stock use. See Appendices 1&2 for a description of all closed grazing areas.

I. Stock Bells- The holder will minimize the use of stock bells.

J. Feeding and Salting- *The use of weed-free feed is strongly encouraged.* Feeding or salting will not be allowed in meadows. Rocky or timbered areas will be used to hold stock for the purpose of feeding.

K. Manure - Manure deposited on parking areas and sidewalks shall be shoveled and removed from the area by the Holder. In other park locations where stock are held for rest or feeding, manure will be raked or scattered.

- L. **Drift Fences** - Drift fences must be kept up and gates closed when leaving an area.
42. **Mitigation**- The Holder shall be responsible for costs associated with mitigation of illegal resource impacts.
43. **Caches** - Equipment and/or food caches shall not be maintained within Yosemite National Park. Gear may be left in camp with an employee *only* if guests will be using the camp the following day. (e.g. “one group leaves the camp and a new group arrives the following day”.) The employee who remains in camp must have a valid wilderness permit in possession for the overnight stay in the wilderness. Food must be properly stored. Property left unattended for more than 24 hours will be considered abandoned and may be confiscated.
44. **Glacier Point Road Restriction**– Vehicles over thirty (30) feet in length and/or vehicles pulling trailers are prohibited beyond the Sentinel Dome parking area, located along the Glacier Point Road. Trailers may not be left at Sentinel Dome or along the Glacier Point Road. Trailers may be dropped off and parked at the Yosemite Ski & Snowboard Area parking lot in the first lot on the left, except during holiday weekends. During holiday weekends trailer must be parked in the north side parking lot at the Glacier Pt Rd/Hwy 41 Junction. (Contact the Commercial Use Office for additional information.)
45. **Hetch Hetchy Road Restriction** – *Vehicles or the combination of a vehicle and trailer exceeding twenty-five (25) feet and/or ninety-six (96) inches in width are prohibited on the Hetch Hetchy Road unless the vehicle has a commercial use authorization and authorized pilot vehicle.*
46. **Mariposa Grove Restriction**: The use of horse or pack animals is not permitted on trails within the Mariposa Grove. The use of horse or pack animals is permitted on the **Outer Loop Trail** between the Fish Camp Trail and the Wawona Trail in the Upper Grove..
47. **Visitor Information** - Information provided through tour leaders, brochures, literature or advertising will insure that the information that is provided to park visitors is accurate and reflects the most current information available to depict park flora, fauna, culture and history. (Information may be found on the internet at <http://www.nps.gov/yose/index.htm>.)
48. **Commercial Transportation** - The Holder shall not transport clients in motor vehicles within the boundaries of Yosemite National Park unless proof of Federal and/or State Transportation Authority and a valid commercial vehicle insurance certificate is on file with the Commercial Use Office.
49. **Vehicle Markings** - Vehicle markings, transportation authority number and company name or logo, must be displayed on both right and left side of all company operated vehicles used to transport passengers. Minimum size lettering for logos will be four inches and must be visible from a distance of fifty (50) feet in daylight.
50. **Commercial Vehicle Safety Inspections** –Holder shall fully cooperate regarding the inspection of commercial passenger vehicles in Yosemite National Park. (Commercial passenger vehicles in Yosemite National Park are occasionally inspected by law enforcement rangers for mechanical deficiencies and compliance with current laws, regulations and permit conditions.)
51. **Equipment Inspection** - Holder shall ensure equipment, tack and gear used in the authorized activity, including vehicles, shall be inspected to ensure that it is sound and in safe operating condition before each trip. Inspection documents, showing when equipment was placed into service, when equipment was inspected and/or repaired and who inspected it, will be maintained by the Holder and will be made available for park inspection upon request.

- 52. Emergency Medical Response** – The Holder shall have at least one employee per group who is trained and currently certified in Cardio Pulmonary Resuscitation (CPR certification by either Red Cross or American Heart Association will be accepted). At least one employee per group must also hold a minimum certification of Standard First Aid. A copy of current certificates must be made available upon request of the National Park Service. The tour leader will carry and maintain a readily accessible kit for emergency medical care of sufficient size and use for the number of persons in the group. If during any trip the group splits at least one employee per group must possess a CPR and First Aid certification and have readily accessible a clearly identified first aid kit that at a “minimum” contains: a note pad and pen or pencil, a working headlamp or pen light, 2 pair medical examination gloves, twelve antimicrobial and/or antiseptic hand wipes, ten 4x4 sterile dressings, four 8x10 and/or 5x9 trauma pads, four rolls of 3” gauze bandage, four triangular bandages, one or two rolls of medical tape (1” or 2” adhesive tape 10 yards), and one pocket Mask for CPR.
- 53. Report of Injury** - The Holder is required to make a report of ANY serious personal injury (an injury requiring professional medical attention) and/or property damage incident occurring within the park involving the Holder’s vehicles, clientele, and/or employees. The report must be made at the first available opportunity before leaving the park. A report will consist of a verbal description of the incident given to a Park Ranger, at the nearest Ranger Station or a Park Desk Officer. (Rangers may request, at their discretion, that a written statement be submitted.) The Park Desk Officer is located in Yosemite Valley and may be contacted by phone at 209-372-0608. The Holder must cooperate with any investigation of the incident by the National Park Service. The Holder must submit a written report of the incident, by mail or email, to the Commercial Use Office within 7 business days after the incident.
- 54. Search and Rescue Cost Recovery** - The Holder shall assume all costs incurred by the National Park Service associated with rescues, evacuations and/or searches for lost/injured/deceased persons participating in trips guided by the Holder and resulting from the Holder’s negligence.
- 55. Trip Itinerary**- It is important that proposed trip itineraries are submitted in a timely manner and are accurate. Proposed itineraries will be reconciled against the actual monthly reports submitted each month. This information helps us track those authorizations that may have use limits as a condition of the permit, assist us on tracking overall commercial use in the park and allows us to plan for field evaluations of services being provided.

Submission Requirements: Reserved or pre-booked itineraries must be submitted a minimum of 14 days prior to the beginning of the trip. Notification of any trip booked without a minimum 14-days’ notice to the park, must be submitted on the day it is booked. Notice may be made to the Commercial Use Office by fax or email. Operating trips in the wilderness without first submitting an itinerary is a violation of your CUA. Accurate and timely submission of these reports is a condition of this CUA to operate within Yosemite National Park. Failure to meet these terms and conditions may result in the holder being cited and the CUA suspended. If the itinerary report is late once, the holder will receive a single warning. If the itinerary report is late or not received for a second time in the same permit year the permit will be suspended for 14 days. More than two late and/or non-submissions will cause the permit to be revoked for the duration of the permit year and the operator may be restricted from receiving a CUA for the following year unless the operator demonstrates remedies are in place to prevent late reporting. Companies operating trips in the park during periods of suspension of the CUA will be cited and their request to receive future permits may be denied. Under terms of this permit, additional administrative fees may be charged by the NPS if reports are not received by the due date.

Itinerary reports should be sent to the Commercial Use Office by the following due dates. (Any trip booked without a minimum 14-days’ notice to the park, must be submitted on the day it is booked.) submit by fax or email?

April 15 (Itinerary for May)
May 15 (Itinerary for June)
June 15 (Itinerary for July)
July 15 (Itinerary for Aug.)

August 15 (Itinerary for Sept.)
September 15 (Itinerary for Oct.)
October 15 (Itinerary for Nov.)

- 56. Monthly Use Reports** - At the end of each month that the authorized activities occurs the holder must complete the Yosemite Monthly Use Report form and send it to the Commercial Use Office. Accurate and timely submission of these reports is a condition of your permit to operate within Yosemite National Parks. If the report is late or not received once, the permit will be suspended. The permit may be reinstated at the Superintendent's discretion once the late report is received. If the report is late or not received for a second time in the same permit year the permit will be suspended. The permit may be reinstated at the Superintendent's discretion once the late report is received. More than two late and/or non-submissions will cause the permit to be revoked for the duration of the permit year and the operator may be restricted from receiving a CUA for the following year unless the operator demonstrates remedies are in place to prevent late reporting. Companies operating trips in the park during periods of suspension will be cited and their request to receive future permits may be denied. Under terms of this permit, additional administrative fees may be charged by the NPS if reports are not received by the due date.

Monthly reports are due by the following dates:

May trip reports due by **June 15**

June trip reports due by **July 15**

July trip reports due by **August 15**

August trip reports due by **September 15**

September trip reports due by **October 15**

October trip reports due by **November 15**

Annual Report Due by December 1 (See condition #57)

(The form must also be used to notify this office regarding any previously reported trips that are cancelled. Send the completed report to the address, email or fax number listed on the report form.)

- 57. Permit Renewal**- The Holder shall give written notice of his/her intent to renew the Authorization for the next calendar year. The notification must be received by the Office of Special Park Use by December 1 of the current permit year.
- 58. Annual Report**-The Holder shall submit an annual survey, which summarizes total in-park visitor use and includes gross revenues for the year. Report forms are due by December 1 of the current permit year. (A blank Annual Report Form will be mailed to the Holder by the Commercial Use Office.)

APPENDIX 1-CONDITIONS OF USE

LYELL CANYON

As per Special Park Conditions 29(B) the following area specific conditions apply while operating in Lyell Canyon. CUA Holders must use only the following Designated Stock Use Sites as specified below

Camp 1; “Rock Camp” – (UTM: Y=4186310, X=300847: are based on NAD83 coordinates)

Access via designated access trail marked on Lyell Canyon CUA Map

Use designated highline/holding area

Grazing area is in adjacent meadow and upper meadow. Access to Upper Meadow grazing area will be via designated creek crossing and Lyell canyon trail PCT only. No travel allowed on existing stock use trails on East side of Lyell Creek.

Camp 2; “Peninsula Camp” – (UTM: Y=4186040, X=300841: are based on NAD83 coordinates)

Access via designated access trail marked on Lyell Canyon CUA Map

Use designated highline/holding area

Grazing area is in Upper Meadow. Access grazing areas will be via designated route and Lyell Canyon PCT trail only. No travel allowed on existing stock use trails on East side of the Lyell Fork.

Must insure campers dispose of human waste on west side of Lyell Canyon PCT trail at least 100 ft. from water

These two stock camps will be signed “STOCK CAMP ONLY”

When on an approved trip, with confirmation from the Yosemite Wilderness Office for one of the above sites, the Holder finds the site occupied by a private stock group and the other stock site is also occupied the Holder may utilize a previously used and identified traditional stock use site only for those nights where both of the above sites are occupied. These previously used and identified stock sites are identified as, “Emergency Stock Camp,” on the accompanying map.

***General and area specific maps will be provided to insure CUA Holders have the necessary information to comply with area specific conditions. The conditions of this permit will be reviewed annually as outlined in the Appendices and adapted as necessary to help insure resource protection and appropriate visitor and commercial use.**

APPENDIX 1-CONDITIONS OF USE

VIRGINIA CANYON

As per Special Park Conditions 39(C) the following area specific conditions apply while operating in Virginia Canyon. CUA Holders must use only the following Designated Stock Use Sites as specified below.

Camp 1; “Avalanche Camp”- (UTM: Y= 4210080, X=292320: are based on NAD83 coordinates)

Access via designated access trail marked on Virginia Canyon CUA Map (gravel wash between hiking trail and camp).
Use designated highline/stock holding area

Camp 2; “Castle Camp” – (UTM: Y=4210520, X=293064: are based on NAD83 coordinates)

Use designated access route and creek crossing southwest of camp.

Stock is not permitted within archeological site boundary.

Use designated stock unloading and loading area southwest of the fire ring.

Use designated highline/stock holding area.

Only use existing campfire ring.

No grazing allowed in Castle Camp Meadow. The meadow is closed due to concerns over degradation of fen resources and vegetation. If stock enters Castle Camp Meadow please removed immediately.

Site 1; “Table Camp” – (UTM: Y=4211370, X=293878: are based on NAD83 coordinates)

Access via designated access trail on Virginia Canyon CUA Map

For use as a drop camp or overnight use without grazing. Use designated highline/holding area while waiting for clients.

Site 2; “Relief Camp” - (UTM: Y=4212350, X=294547: are based on NAD83 coordinates)

This site **is closed** to commercial stock use due to its proximity to water and susceptibility to resource damage.

Site 3; “Rogers Camp” (UTM: Y=4212520, X=294851: are based on NAD83 coordinates)

Access via designated access trail marked on Virginia Canyon CUA Map

For use as a drop camp or overnight use without grazing. Limited grazing may be allowed with approval from Wilderness Office. Use designated highline/holding area while waiting for clients.

Site 4; Junction Camp – (UTM: UTM: Y=4213600, X=294873: are based on NAD83 coordinates)

Access via designated access trail marked on Virginia Canyon CUA Map (designated access trail adjacent to hiking trail).

To be used as drop camp or for overnight use without grazing. Limited grazing may be allowed with approval from Wilderness Office. Use designated highline/holding area while waiting for clients.

Approval by the wilderness office can be accomplished by calling the wilderness patrol supervisor at 209-372-0549 or by contacting the Wilderness Duty Officer through the park dispatch office at 209-379-1992

APPENDIX 1-CONDITIONS OF USE

VIRGINIA CANYON

As per Special Park Conditions 39(C) the following area specific conditions apply while operating in Virginia Canyon. CUA Holders must use only the following Designated Stock Use Sites as specified below.

Site 5; Sierra Club Camp - (UTM: Y=4215200, X=294775: are based on NAD83 coordinates)

Access via designated access trail marked on Virginia Canyon CUA Map

Drop Camp only. Overnight stock use is not allowed at this site.

There is **no** designated highline/holding area for this site.

Approval by the wilderness office can be accomplished by calling the wilderness patrol supervisor at 209-372-0549 or by contacting the Wilderness Duty Officer through the park dispatch office at 209-379-1992.

***General and area specific maps will be provided to insure CUA Holders have the necessary information to comply with area specific conditions. The conditions of this permit will be reviewed annually as outlined in the Appendices and adapted as necessary to help insure resource protection and appropriate visitor and commercial use.**

APPENDIX 1-CONDITIONS OF USE

KERRICK CANYON

As per Special Park Conditions 39(C) the following area specific conditions apply while operating in Kerrick Canyon. CUA Holders must use only the following Designated Stock Use Sites as specified below.

Camp 1: “Upper Kerrick - South” – (UTM: Y= 4220757 X= 282514 are based on NAD83 coordinates)

Please consult the Upper Kerrick Canyon Overview Map in the appendix (*Appendix 2*) for all restrictions mentioned here:

- Grazing is prohibited in closed meadow areas.
- All hiking and stock traffic will be confined to the NPS trail system through closed meadow areas.
- Approved stock retention methods for grazing include; Hobbling, high lining, electric fence or any combination thereof.
 - ❖ Electric fences will be placed in area at least 100 feet from avoidance areas.
 - ❖ Refrain from placing fence in areas that have been previously used by earlier season pack stock parties.
 - ❖ Grazing stock prior to the grazing opening date is prohibited. Stock must held and fed with supplemental feed in in the designated holding area during the duration of your stay for trips occurring before opening date for grazing.
 - ❖ Stock use will be limited to designated access route & stock holding area when not grazing.
- This site will be limited to one stock party per night – *Contact Yosemite Wilderness Manager for approval.
- Camping is limited to the area immediately adjacent to the preferred fire ring as identified on the Kerrick Canyon Overview Map.

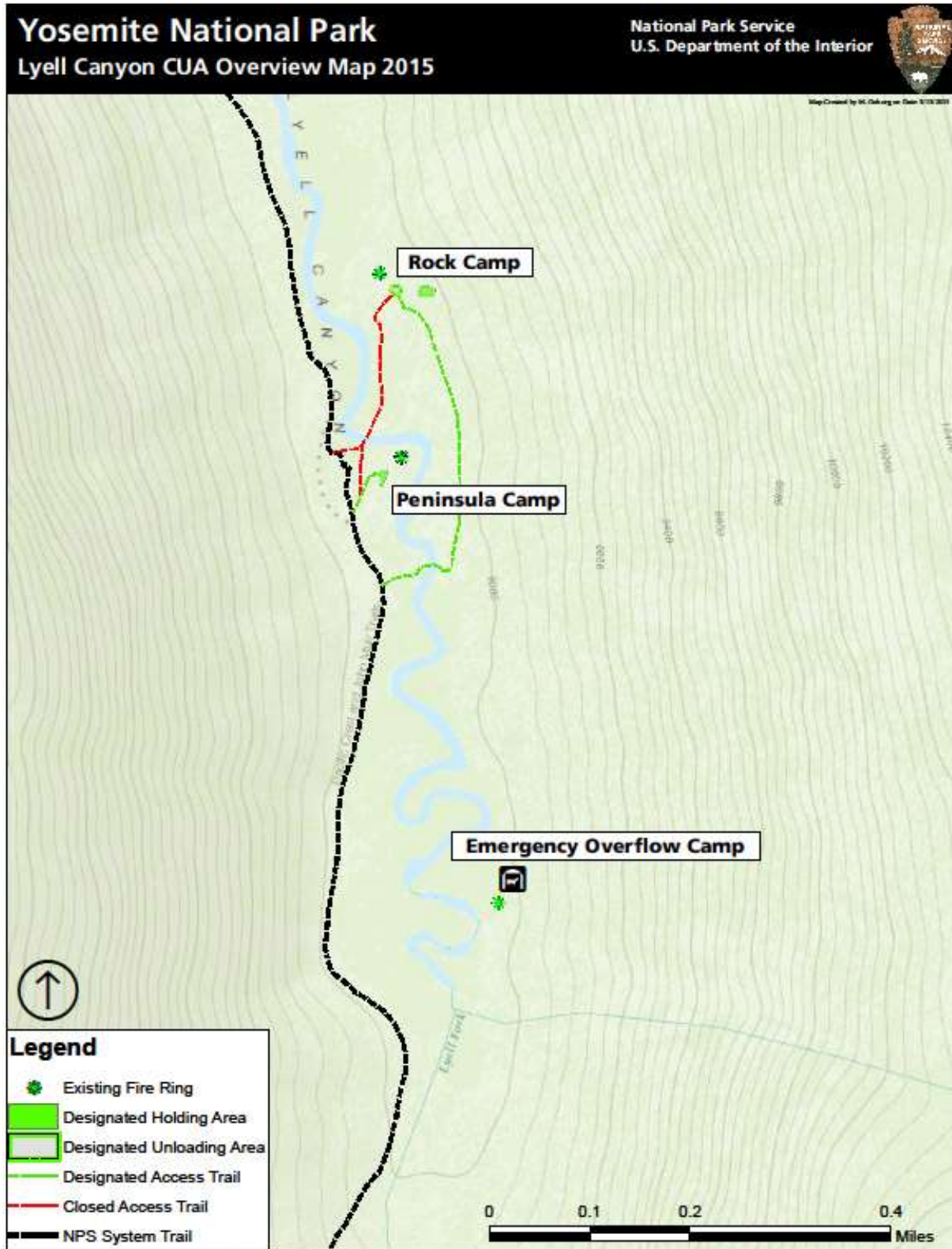
*Justification: In August 2008 areas of Kerrick Meadow were restricted and closed to pack stock grazing in order to reduce potential impacts to the now federally threatened Yosemite toad (*Anaxyrus canorus*) and federally endangered Sierra Nevada yellow-legged frog (*Rana sierra*) (both listed June 2014). The determination has been reached that some of the Kerrick Meadow closure can be reopened (on a trial basis) to allow grazing with certain precautionary measures remaining in place until the Wilderness Stewardship Plan and analyses are complete. A Meadow Grazing opening date will be established and posted on the Yosemite wilderness conditions Web page at: <http://www.nps.gov/yose/planyourvisit/wildcond.htm>*

- Additional information on how the opening date is established can be found in Appendix 4.

**Approval for camping in Kerrick can be accomplished by calling the wilderness patrol supervisor at 209-372-0549 or by contacting the Wilderness Duty Officer through the park dispatch office at 209-379-1992.*

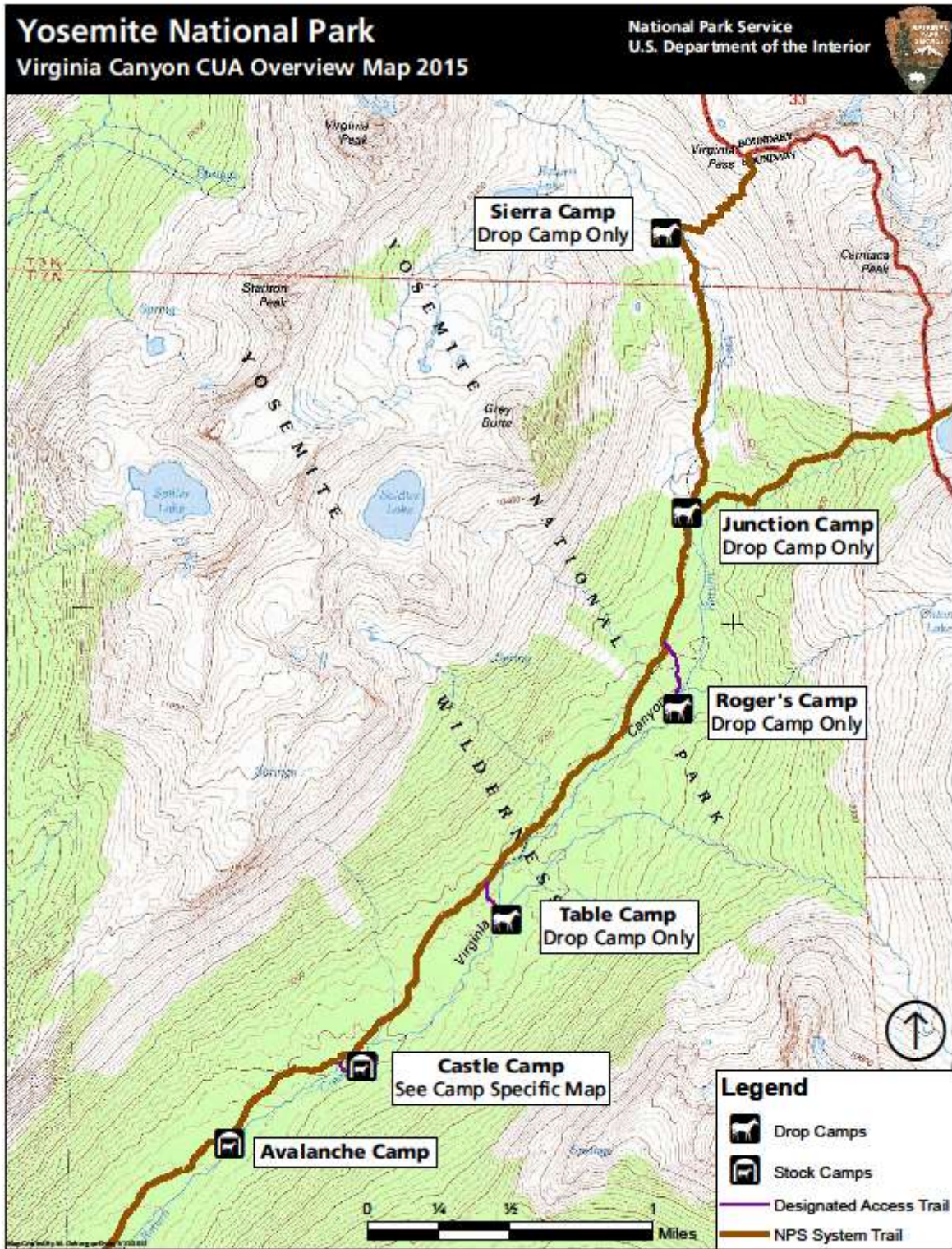
APPENDIX 2- MAP OF USE AREA

LYELL CANYON



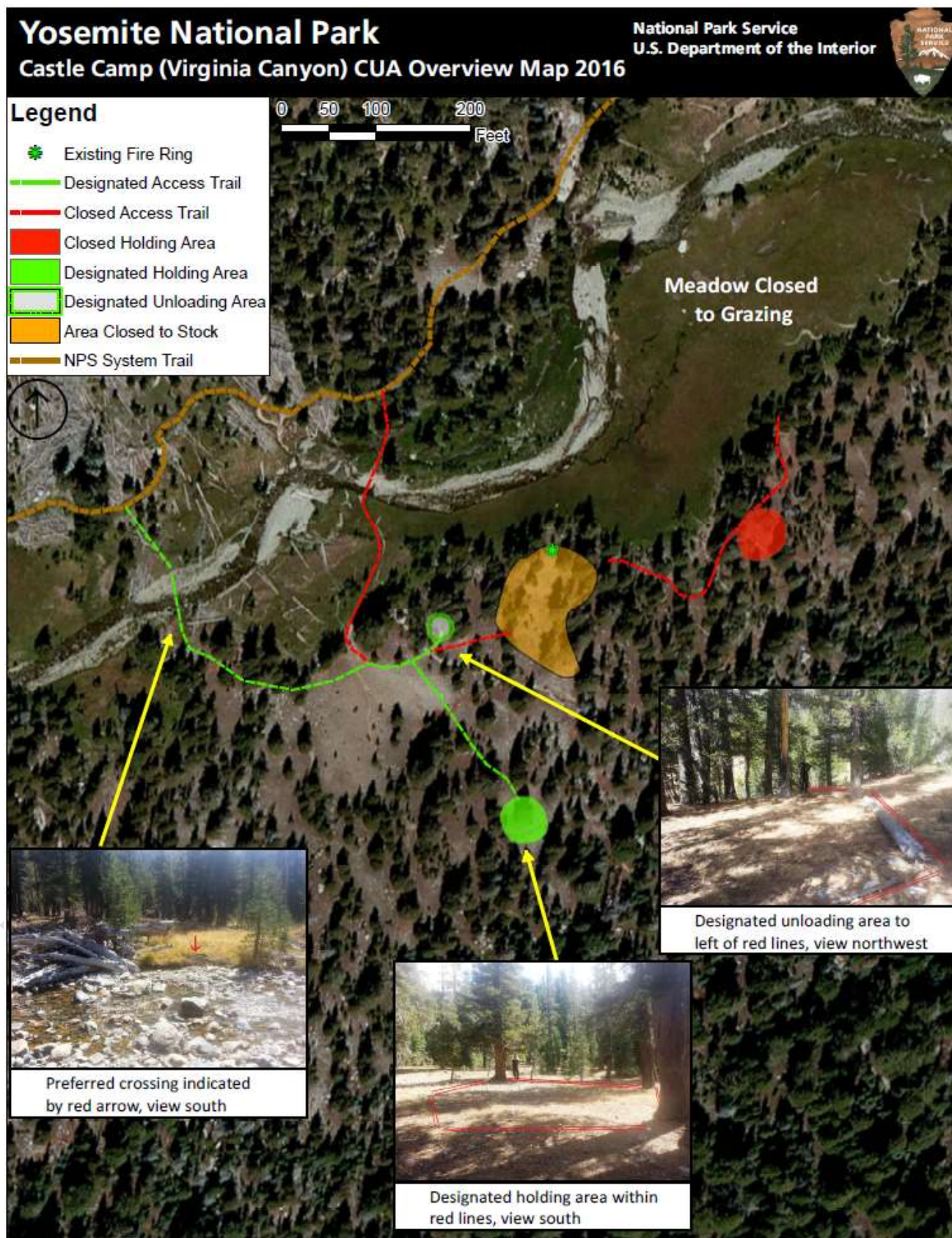
APPENDIX 2- MAP OF USE AREA

VIRGINIA CANYON



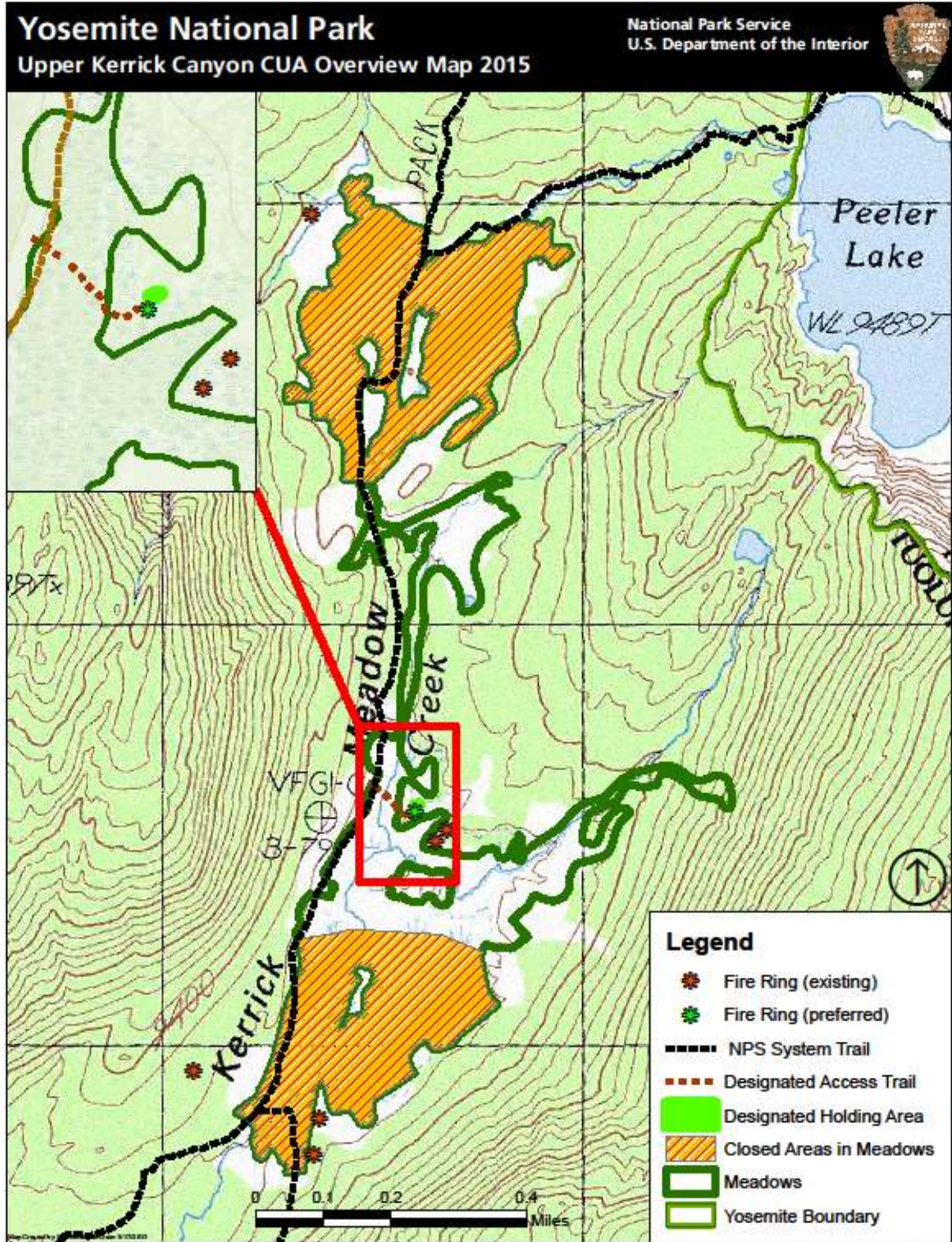
APPENDIX 2- MAP OF USE AREA

VIRGINIA CANYON (Castle Camp)

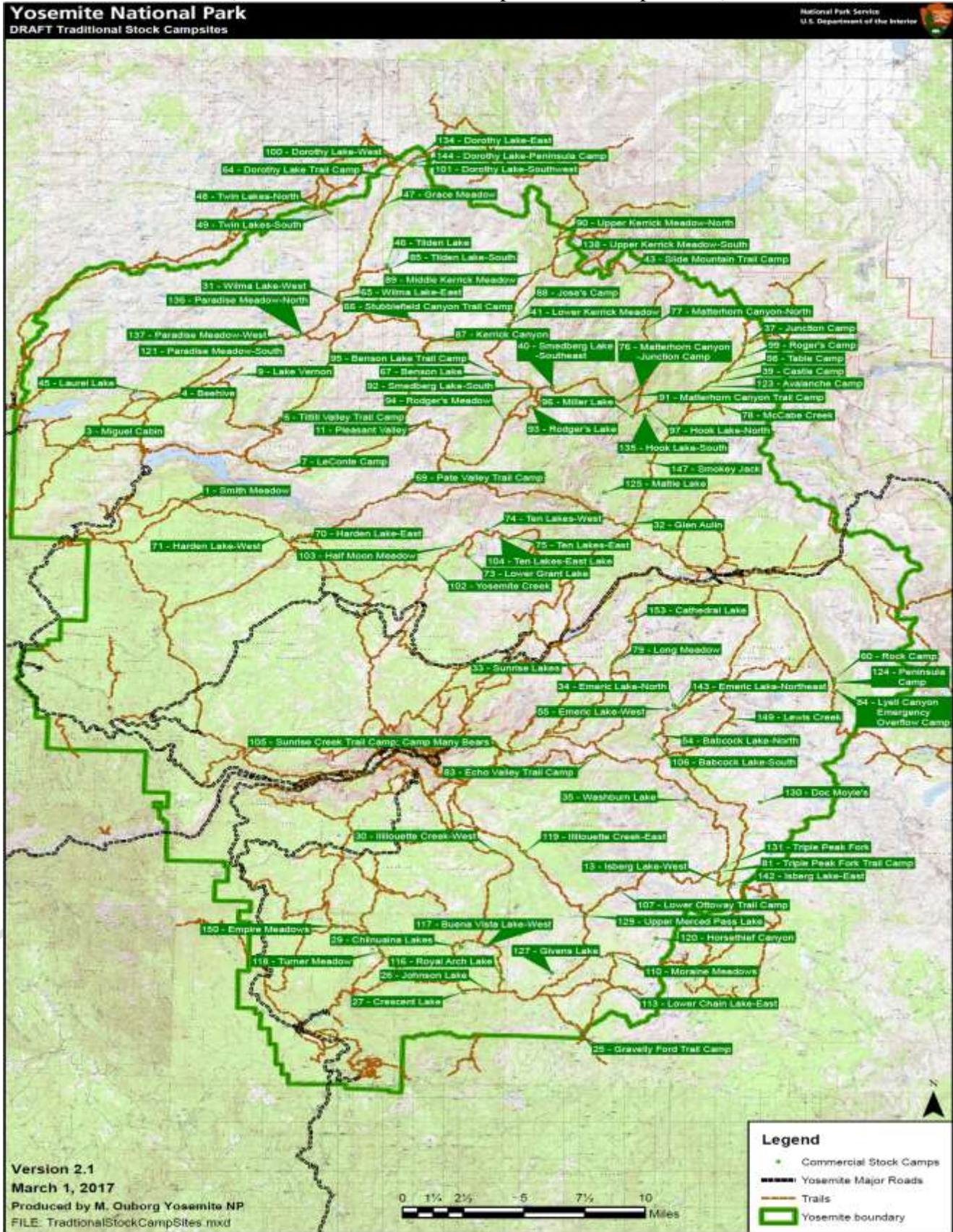


APPENDIX 2- MAP OF USE AREA

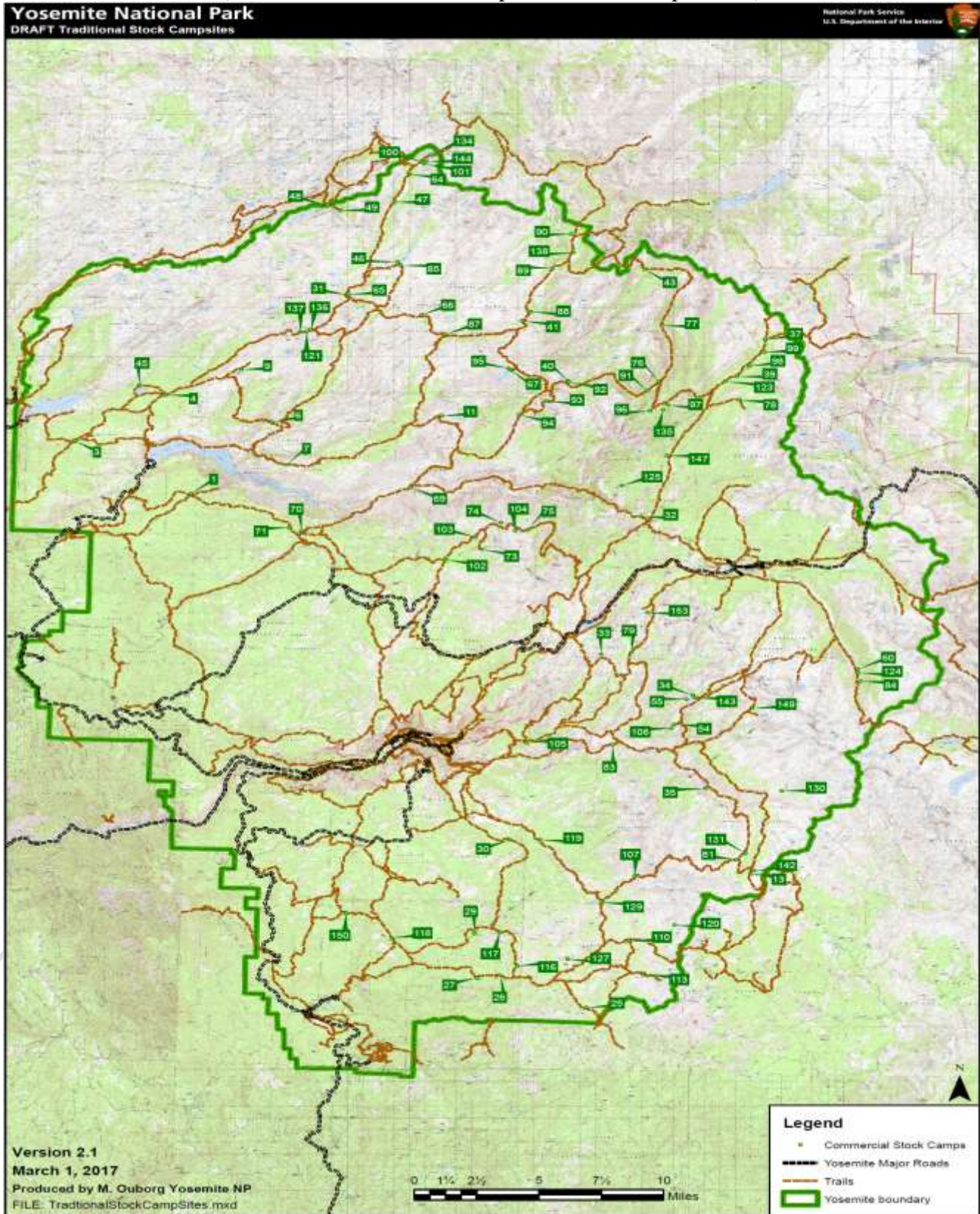
UPPER KERRICK CANYON OVERVIEW MAP



Appendix #3
 (Draft Traditional Stock Campsite with Camp Names)



Appendix #3
(Draft Traditional Stock Campsite without Camp Names)



APPENDIX 4A- MEADOW GRAZING

OPENING DATE DETERMINATION

(The holder is responsible for checking the meadow grazing opening date for Kerrick Meadows. Opening date information may be found at the following link <http://www.nps.gov/yose/planyourvisit/wildcond.htm>.)

The Park Service shall establish a grazing opening date based on timing of Yosemite toad breeding and rearing and posted in the Yosemite Annual opening dates Announcement and posted on the Yosemite Web page.

- Opening dates will coincide with post-Yosemite toad metamorphosis and dispersal from breeding areas approximately 8 weeks after snow melt. The duration of the toad breeding and rearing cycle each year shall be based on the California Data Exchange Center – Snow Survey Information obtained from the SLIDE CANYON sensor (ELEV 9200’) approximate 3 miles to the SE of Kerrick Meadow. The estimated start of breeding considers snow depth and snow water content collected by this snow survey station to approximate conditions at Kerrick Meadow (ELEV 9500’) 1 week later given the elevation difference and different site condition factors. In the event the station is non-functioning, manual snow survey data collected on May 1st by the Forest Service at CENTER MTN (ELEV 9400’) will be used to approximate snow melt at Kerrick Meadow to establish the post 8 week grazing opening date.
 - Justification: this approach allows metamorphosed Yosemite toads enough time to disperse from concentrated breeding areas where impacts from trampling may be higher. The duration of the breeding and rearing cycle each year shall be based on the “wet” or “dry” year predictions based on the California Department of Water Resources Bulletin 120 (issued May 1st of each year). In low snow (dry) years, where sensors or snow data indicate meadows have melted prior to May 1st, May 1st will be used as the start date for the 8 week breeding and rearing period prior to meadow grazing opening date, since toads are known to delay breeding even when meadows have melted out. In high snow (wet) years, meadow grazing opening dates could be substantially delayed.
- NPS staff will conduct annual indicator monitoring of ecological condition in Kerrick Meadows.

Appendix #4B
 (Yosemite National Park Meadow Opening Dates and Grazing Capacities)
Yosemite National Park – Meadow Opening Dates & Grazing Capacities

In an effort to improve our wilderness stewardship plan we will be taking the opportunity over the next few years to evaluate many of the best management practices offered in our draft pack stock appendix through the Commercial Use Authorization permitting process. This effort will allow us to better inform our draft management document(s). During this time we would like you to provide us feedback while we continue to develop the pack stock management plan and a monitoring program that will best protect and enhance park resources that support pack stock use in the park.

Last year we addressed meadow opening dates given the extraordinary snow pack because of the potential impacts that could have occurred. It offered a great opportunity for feedback and dialog. In an effort to continue that relationship this year we are providing you a slightly modified version of appendix C from the pack stock framework. It provides a more comprehensive list of park meadows with proposed meadow opening dates and grazing capacities

Generally our preferred choice for grazing capacities was at 25% utilization. Through our Best Professional Judgement (BPJ) we made some adjustments and gave a brief justification/explanation. We have also made minor adjustments to Meadow Opening Date (MOD) classes based on field observations. We have included a short list of Acronyms that we have used in the table.

In the table provided in your CUA permit MOD's are expressed in terms of soil moisture in lieu of date classes (early/late). Meadow opening dates can vary 2-4 weeks from dry to average years and from average to wet years. *(This table reflects 3 week differences in opening dates between water years.)* Water year classifications are based on the snow packs water equivalency measured during April's snow survey each year (Results posted in May).

Meadow Opening date Class	*Dry Year	Avg. Year	Wet Year
Early=Dry	June 7	Jun 28	July 19
Early/Mid=Dry/Moist	June 15	July 6	July 27
Mid=Moist	June 25	July 16	Aug 6
Early Late=moist/wet	July 7	July 28	Aug 18
Late=wet	July 15	Aug 5	Aug 26

* Modest start dates; pack stock framework calls for MOD's for **Early**=Mid June, **Mid**=Mid July, **Late**-Early August

- BPJ Best Professional Judgment (BPJ) takes into account meadow size, observed condition, known use patterns, ecological attributes, and forage attributes.
- MOD Meadow Opening Date
- GC Grazing Capacity. GC will be monitored and adjusted as use approaches recommended levels.
- SUN Expresses the number of overnight stays by a single head of stock at a given site. Example 12 SUN reported for a site conveys that a site had been utilized by 12 animals for one night.
- BPJ Best Professional Judgement takes into account meadow size, observed condition, known use patterns, ecological and forage attributes.

Appendix #4 (Table 1)

Yosemite National Park
Meadow Opening Dates and Grazing Capacities

Watershed	Camp Name (Camp ID#)	Camp Location	Elevation (ft)	Meadow Opening Date				Grazing Capacities	Stock Use Nights Justification/Explanation
		UTME, UTMN NAD 1983 Zone 11N		Opening Date Class	Dry Year	Average Year	Wet Year		
	Babcock Lake-North (54)	289012, 4181756	8901	Moist-Wet	7-Jul	28-Jul	18-Aug	89	25% Utilization.
	Babcock Lake-South (106)	288829, 4181410	8901	Moist-Wet	7-Jul	28-Jul	18-Aug	6	BPJ supports interim GC at Average reported stock use 2004-2017.
	Buena Vista Lake-West (117)	277751, 4164581	9075	Non-meadow	N/A	N/A	N/A	Supp. Feed only.	No grazing available
	Cathedral Lake (153)	287308, 4190987	9646	Wet	15-Jul	5-Aug	26-Aug	19	BPJ supports interim GC at Average reported stock use 2004-2017. Site elevation above 9600 no wood fires.
	Doc Moyle's East (130)	295947, 4176235	9311	Wet	15-Jul	5-Aug	26-Aug	50	10% utilization. Access via off trail route greater than 1/4 mile. Group size limits 8 people, 12 head of stock.
	Doc Moyle's West (130)	295947, 4176235	9311	Wet	15-Jul	5-Aug	26-Aug	32	10% utilization. Access via off trail route greater than 1/4 mile. Group size limits 8 people, 12 head of stock.
	Echo Valley Trail Camp Admin. Site (83)	285029, 4180048	7021	Wet	15-Jul	5-Aug	26-Aug	18	BPJ supports interim GC at half the maximum reported stock use 2004-2017.
	Emeric Lake-North and West (34 and 55)	290195, 4184159 and 289811, 4183818	9350	Wet	15-Jul	5-Aug	26-Aug	114	25% Utilization.
	Empire Meadows (a.k.a. Deer Camp) (150)	267844, 4166141	6480	Wet	15-Jul	5-Aug	26-Aug	12	Site not evaluated. BPJ supports Interim GC of 12 (two strings). Wet meadows may be more resilient. No Reported Stock use.
	Illilouette Creek-East (119)	280351, 4172203	7277	Non-meadow (Moist)	25-Jun	16-Jul	6-Aug	12	Site not evaluated. BPJ supports Interim GC of 12 (two strings). Wet meadows may be more resilient. No Reported Stock use.
	Illilouette Creek-West (a.k.a. Buena Vista Creek) (30)	278398, 4172169	7011	Non-meadow (Moist)	25-Jun	26-Jul	6-Aug	12	Site not evaluated. BPJ supports Interim GC of 12 (two strings). Wet meadows may be more resilient. No Reported Stock use.

Isberg Pass Lake-East (142)	294168, 4169621	10043	Dry	7-Jun	28-Jun	19-Jul	15	BPJ supports interim GC at Average reported stock use 2004-2017. Site elevation above 9600 no wood fires. Sensitive Resources Present
Isberg Pass Lake-West (13)	293935, 4169374	10003	Dry	7-Jun	28-Jun	19-Jul	15	BPJ supports interim GC at Average reported stock use 2004-2017. Site elevation above 9600 no wood fires. Sensitive Resources Present
Lewis Creek North & South (149)	294052, 4183079	9885	Not evaluated(Moist-Wet)	7-Jul	28-Jul	18-Aug	6	BPJ supports interim GC at Average reported stock use 2004-2017.
			Not evaluated (Moist-Wet)	7-Jul	28-Jul	18-Aug	6	BPJ supports interim GC at Average reported stock use 2004-2017.
Long Meadow North & South (79)	286229, 4187690	9534	Moist	25-Jun	16-Jul	6-Aug	43	BPJ supports interim GC at maximum reported stock use 2004-2017.
Lower Grant Lake (73)	276606, 4196197	9249	Non-meadow	N/A	N/A	N/A	Supp. Feed only.	No grazing available
Lower Ottoway Trail Camp Admin. Site (107)	286450, 4169210	9678	Non-meadow (Moist-Wet)	7-Jul	28-Jul	18-Aug	6	BPJ supports interim GC at above average reported stock use 2004-2017. Limited grazing available in meadows above lake, approx 0.5 miles from site. Site elevation above 9600 no wood fires.
Merced Lake (Cavalry) (##)	n/a	7310	Non-meadow	N/A	N/A	N/A	Supp. Feed only.	No grazing available
Merced Lake Ranger Station Admin. Site (145)	288939, 4179463	7316	Moist	25-Jun	16-Jul	6-Aug	41	25% Utilization. Fen/wet meadow is excluded from grazing per the Merced River Plan (exclusion via seasonal electric fence). Understory can be grazed for administrative use only through approval.
Sunrise Creek (Camp Many Bears) Trail Camp Admin. Site (105)	279482, 4180223	7155	Non-meadow (Moist)	25-Jun	16-Jul	6-Aug	15	BPJ supports interim GC at below average reported stock use 2004-2017. Some understory grazing available.
Sunrise Lakes (33)	284282, 4187532	9265	Moist	25-Jun	16-Jul	6-Aug	12	BPJ supports interim GC at Average reported stock use 2004-2017.
Triple Peak Fork North (131)	293586, 4171075	9068	Dry	7-Jun	28-Jun	19-Jul	25	25 % Utilization
Triple Peak Fork Trail Camp Admin. Site (81)	293011, 4170542	9117	Non-meadow	N/A	N/A	N/A	Supp. Feed only.	No grazing available

	Washburn Lake (35)	291019, 4176420	7618	Moist-Wet	7-Jul	28-Jul	18-Aug	25	BPJ supports interim GC at above average reported stock use 2004-2017. Access to forest foraging areas is difficult due to severe amounts of blown down timber.
	Yosemite Creek (102)	274260, 4195362	8153	Non-meadow	N/A	N/A	N/A	Supp. Feed only	No grazing available.
	Buck Camp Admin. Site (141)	280072, 4160055	8150	Dry	7-Jun	28-Jun	19-Jul	84	BPJ supports interim GC at maximum reported stock use 2004-2017.
	Chilnualna Lakes (29)	276097, 4164459	8517	Non-meadow	N/A	N/A	N/A	Supp. Feed only	No Grazing Available. Sensitive resources present.
	Crescent Lake (27)	276257, 4160770	8389	Dry	7-Jun	28-Jun	19-Jul	15	25% Utilization. Sensitive resources present.
	Givens Lake (127)	282147, 4162328	8829	Wet	15-Jul	5-Aug	26-Aug	6	BPJ supports interim GC at above average reported stock use 2004-2017. Access via off trail route greater than 1/4 mile. Group size limits 8 people, 12 head of stock.
	Gravelly Ford Trail Camp (25)	283324, 4158325	7474	Non-meadow (moist)	25-Jun	16-Jul	6-Aug	12	Site not evaluated. BPJ supports Interim GC of 12 (two strings). Wet meadows may be more resilient. No Reported Stock use.
	Horsethief Canyon (120)	289034, 4165132	9399	Moist	25-Jun	16-Jul	6-Aug	51	BPJ supports interim GC above average reported stock use 2004-2017. Access via off trail route greater than 1/4 mile. Group size limits 8 people, 12 head of stock.
	Horsethief Canyon (Upper) (##)	289253, 4165676	9460	Moist-Wet	7-Jul	28-Jul	18-Aug	12	BPJ supports interim GC of 12. Access via off trail route greater than 1/4 mile. Group size limits 8 people, 12 head of stock.
	Johnson Lake (26)	277793, 4160961	8264	Wet	15-Jul	5-Aug	26-Aug	12	Site not evaluated. BPJ supports Interim GC of 12 (two strings). Wet meadows may be more resilient. No Reported Stock use.
	Lower Chain Lake-East (17 and 113)	286784, 4161180 and 286973, 4161060	8953	Moist-Wet	7-Jul	28-Jul	18-Aug	25	BPJ supports interim GC above average reported stock use 2004-2017.
	Merced Pass Lake-Upper (129)	284363, 4166994	8953	Wet	15-Jul	5-Aug	26-Aug	8	BPJ supports interim GC at Average reported stock use 2004-2017.
	Moraine Meadows (110)	286096, 4163799	8711	Wet	15-Jul	5-Aug	26-Aug	20	BPJ supports interim GC at 20. No reported Stock use
	Royal Arch Lake (116)	278884, 4161814	8694	Wet	15-Jul	5-Aug	26-Aug	7	BPJ supports interim GC at Average reported stock use 2004-2017.
	Turner Meadow (118)	270736, 4164084	7470	Wet	15-Jul	5-Aug	26-Aug	6	BPJ supports interim GC at maximum reported stock use 2004-2017.
	Beehive (4)	256205, 4208985	6555	Wet	15-Jul	5-Aug	26-Aug	40	BPJ supports interim GC at 40. No reported stock use.
	Benson (67)	278422, 4211075	7585	Dry-Moist	15-Jun	6-Jul	27-Jul	115	BPJ supports interim GC at Average reported stock use 2004-2017. Forage available in forested understory (~55 acres).

Benson Lake Trail Camp Admin. Site (95)	278326, 4211181	7588	Non Meadow Moist	25-Jun	16-Jul	6-Aug	0	Meadows currently closed to grazing for resource protection. This meadow is on the south side of the Benson Lake exclusion fence. All grazing at Benson Lake should take place on the North side of the fence - see site #67 for capacity for this site.
Boundary Lake (##)	Unknown	Unknown	Non-meadow	N/A	N/A	N/A	Supp. Feed only	No Grazing Available.
Cold Canyon Smokey Jack (147)	288539, 4203962	8694	Moist	25-Jun	16-Jul	6-Aug	85	BPJ supports interim GC above average reported stock use 2004-2017.
Dorothy Lake Trail Camp Admin. Site (64)	271953, 4227235	9078	Moist	25-Jun	16-Jul	6-Aug	12	Site not evaluated. BPJ supports Interim GC of 12 (two strings). Wet meadows may be more resilient. No Reported Stock use.
Dorothy Lake East (134)	273317, 4228846	9413	Wet	15-Jul	5-Aug	26-Aug	6	25% Utilization. Limited forage area.
Dorothy Lake Southwest (101)	272853, 4228096	9393	Moist	25-Jun	16-Jul	6-Aug	73 (57+16)	Forage area is combined for camps 100 & 101
Dorothy Lake West (100)	272754, 4228263	9393	Moist	25-Jun	16-Jul	6-Aug		
Dorothy Lake Peninsula Camp (144)	273011, 4228297	9409	Moist-Wet	7-Jul	28-Jul	18-Aug	12	25% Utilization.
Glen Aulin East (32)	286867, 4198934	7802	Dry	7-Jun	28-Jun	19-Jul	29	BPJ supports interim GC at Average reported stock use 2004-2017. Limited access of stock because of blown down trees.
Glen Aulin West (32)		7802	Moist	25-Jun	16-Jul	6-Aug	29	
Grace Meadow (47)	270966, 4224946	8684	Moist-Wet	7-Jul	28-Jul	18-Aug	44	BPJ supports Interim GC of 44. No reported commercial use.
Halfmoon Meadow (103)	276154, 4197235	8891	Wet	15-Jul	5-Aug	26-Aug	12	Site not evaluated. BPJ supports Interim GC of 12 (two strings). Wet meadows may be more resilient. No Reported Stock use.
Harden Lake-East (70)	264977, 4197725	7451	Not evaluated (Moist-Wet)	7-Jul	28-Jul	18-Aug	12	Site not evaluated. BPJ supports Interim GC of 12 (two strings). Wet meadows may be more resilient. No Reported Stock use.
Hook Lake-North (97)	288599, 4208154	9403	Moist	25-Jun	16-Jul	6-Aug	25	BPJ supports interim GC above average reported stock use 2004-2017. Sensitive resources present.
Jose's Camp (88)	279740, 4215888	8980	Moist	25-Jun	16-Jul	6-Aug	46	BPJ supports interim GC above average reported stock use 2004-2017.
Lake Vernon (9)	261086, 4211105	6568	Wet	15-Jul	5-Aug	26-Aug	Supp. Feed only	No Grazing Available. Sensitive resources present.

Lake Vernon Cabin Admin. Site (140)	261555, 4211716	6598	Wet	15-Jul	5-Aug	26-Aug	120	BPJ supports interim GC at maximum reported stock use 2004-2017.
Laurel Lake (45)	254542, 4209813	6509	Wet	15-Jul	5-Aug	26-Aug	8	BPJ supports interim GC at maximum reported stock use 2004-2017.
Lower Kerrick (41)	279228, 4215118	8943	Dry	7-Jun	28-Jun	19-Jul	33	BPJ supports Interim GC of 33. No reported commercial use.
Matterhorn Canyon-Junction Camp (76)	287996, 4210104	8468	Moist	25-Jun	16-Jul	6-Aug	155	BPJ supports interim GC above average reported stock use 2004-2017. Forage area is the same for camps 76 & 91 (stock tend to concentrate at lower regardless of where camp is).
Matterhorn Canyon Trail Camp (91)	287259, 4209344	8438	Moist	25-Jun	16-Jul	6-Aug		
Matterhorn Canyon North (77)	288199, 4214521	9150	Moist	25-Jun	16-Jul	6-Aug	20	BPJ supports Interim GC of 20.
Mattie Lake (125)	285618, 4201478	9235	Wet	15-Jul	5-Aug	26-Aug	12	BPJ supports interim GC of 12. Access via off trail route greater than 1/4 mile. Group size limits 8 people, 12 head of stock.
Miguel Cabin (3)	250340, 4205193	5020	Moist	25-Jun	16-Jul	6-Aug	12	BPJ supports interim GC at maximum reported stock use 2004-2017.
Miller Lake North (96)	287453, 4207657	9482	Moist-Wet	7-Jul	28-Jul	18-Aug	35	BPJ supports interim GC above average reported stock use 2004-2017. Sensitive resources present.
Miller Lake South			Moist-Wet	7-Jul	28-Jul	18-Aug	20	BPJ supports interim GC of 20. Forage area is the same for south and southeast camps.
Miller Lake Southeast			Moist-Wet	7-Jul	28-Jul	18-Aug		
Miwok Lake (128)	262752, 4215267	8251	Not evaluated	N/A	N/A	N/A	Supp. Feed only	No Grazing available. Access via off trail route greater than 1/4 mile. Group size limits 8 people, 12 head of stock. Access difficult because of down trees.
Paradise Meadow Admin. Site (136)	265577, 4214417	7668	Moist	25-Jun	16-Jul	6-Aug	106	25 % Utilization
Pate Valley (69)	271988, 4201327	4350	Moist-Wet	N/A	N/A	N/A	Supp. Feed only	High potential for spread of noxious weed.
Pate Valley Trail Camp Admin. Site (##)	271988, 4201327	4357	Moist-Wet	N/A	N/A	N/A	Supp. Feed only	High potential for spread of noxious weed.
Pleasant Valley (11)	274006, 4207254	6834	Wet	15-Jul	5-Aug	26-Aug	12	BPJ supports interim GC at maximum reported stock use 2004-2017.

Rancheria Falls, New City Camp (5)	261326, 4204387	4468	Non-meadow	N/A	N/A	N/A	Supp. Feed only.	No Grazing Available. Raker Act restrictions on stock accessibility to water.
Rancheria Falls, LeConte Camp (7)	263995, 4203205	6243	Non-meadow	N/A	N/A	N/A	Supp. Feed only.	No Grazing Available. Raker Act restrictions on stock accessibility to water.
Rock Island Pass Trail Camp Admin. Site (152)	282491, 4219057	9426	Not Evaluated (Moist)	25-Jun	16-Jul	6-Aug	6	BPJ supports interim GC above average reported stock use 2004-2017. Sensitive Resources Present.
Rodger's Lake (93)	280851, 4208435	9514	Not Evaluated (Moist)	25-Jun	16-Jul	6-Aug	6	BPJ supports interim GC above average reported stock use 2004-2017.
Rodger's Meadow North (94)	279013, 4207358	8756	Moist	25-Jun	16-Jul	6-Aug	51	BPJ supports Interim GC of 51. No reported commercial use.
Slide Mountain Trail Camp Admin. Site (43)	287095, 4219377	9344	Non-meadow (Moist)	25-Jun	16-Jul	6-Aug	6	BPJ supports interim GC above average reported stock use 2004-2017. Sensitive Resources Present.
Smedberg Lake South (92)	282181, 4210051	9239	Moist	25-Jun	16-Jul	6-Aug	52	BPJ supports interim GC at Average reported stock use 2004-2017.
Smedberg Lake Southeast (40)	282166, 4210135	9272	Moist	25-Jun	16-Jul	6-Aug		
Smedberg Lake Trail Camp Admin. Site (146)	281940, 4210464	9239	Not evaluated	N/A	N/A	N/A	Supp. Feed only.	Limited forage available; too close to lakeshore.
Smith Meadow (1)	257822, 4200809	6440	Dry-Moist	15-Jun	6-Jul	27-Jul	33	BPJ supports Interim GC of 51.
Stubblefield Trail Camp Admin. Site (66)	272718, 4215607	7753	Non-meadow (Moist)	25-Jun	16-Jul	6-Aug	6	BPJ supports interim GC at Average reported stock use 2004-2017.
Ten Lakes East (75)	279561, 4197828	9550	Non-meadow	N/A	N/A	N/A	Supp. Feed only	No forage available. No reported stock use.
Tilden Lake North (46)	271168, 4220005	8901	Moist	25-Jun	16-Jul	6-Aug	40	BPJ supports Interim GC of 40.
Tilden Lake Northeast (46)		8904	Moist	25-Jun	16-Jul	6-Aug	32	BPJ supports Interim GC of 32. This meadow is approximately 3 miles from an NPS trail. Free range grazing can occur this distance from established trails, but all other services and riding of stock by commercial operations is prohibited beyond 1/4 mile from NPS trail unless otherwise approved.

Tilden Lake-Southeast (85)	271356, 4219697	8917	Moist	25-Jun	16-Jul	6-Aug	24	BPJ supports Interim GC of 24.
Tilden Lake-Southwest (85)	270340, 4219545	8917	Moist	25-Jun	16-Jul	6-Aug	24	BPJ supports Interim GC of 24.
Tilden Lake-Northwest (86)	270340, 4219545	8901	Moist	25-Jun	16-Jul	6-Aug	8	GC based on best professional judgement. Monitor and adjust if use approaches recommended level.
Tiltill Valley Trail Camp Admin. Site (6)	263072, 4206753	5636	Wet	15-Jul	5-Aug	26-Aug	90	BPJ supports interim GC at maximum reported stock use 2004-2017.
Tim's Camp North Admin. Site (132)	267126, 4215728	7710	Moist	25-Jun	16-Jul	6-Aug	51	25% Utilization
Tim's Camp South Admin. Site (132)	(,)	7710	Wet	25-Jun	16-Jul	6-Aug	59	25% Utilization
Twin Lakes North (48)	266672, 4224646	8934	Moist-Wet	7-Jul	28-Jul	18-Aug	36	25% Utilization.
Twin Lakes South (49)	267462, 4224256	8930	Moist-Wet	7-Jul	28-Jul	18-Aug		
Kerrick Canyon Middle (87 and 89)	274240 281120, 4213994 4219469	9160	Moist	25-Jun	16-Jul	6-Aug	50	BPJ supports Interim GC of 50. Sensitive Resources Present.
Kerrick, Upper Meadow - North (90)	282346, 4222292	9396	Moist-Wet	7-Jul	8-Aug	18-Aug	49	BPJ supports Interim GC of 49. Sensitive resources present. Stock confined to trail in closed areas. When meadows are closed to grazing stock must be fed with supplemental feed in designated holding areas. When meadows are open to grazing special conditions apply (see park compendium or CUA permit for additional details).
Kerrick, Upper Meadow - South (138)	282514, 4220757	9317	Moist-Wet	7-Jul	28-Jul	18-Aug	42	BPJ supports Interim GC of 42. Sensitive resources present. Stock confined to trail in closed areas. When meadows are closed to grazing stock must be fed with supplemental feed in designated holding areas. When meadows are open to grazing special conditions apply (see park compendium or CUA permit for additional details).
Upper Lyell Rock Camp (60)	300835, 4186326	8980	Moist	25-Jun	16-Jul	6-Aug	61	25% Utilization. BPJ supports Interim GC of 61.
Upper Lyell Peninsula Camp (124)	300870, 4186032	8973	Wet	15-Jul	25-Aug	26-Aug	188	25% Utilization. BPJ supports Interim GC of 188.
Wilma Lake East (65)	268000, 4217312	7959	Moist-Wet	7-Jul	28-Jul	18-Aug	51	BPJ supports Interim GC of 51.

Virginia Canyon, Junction Camp (37)	294876, 4213601	9327	Non-meadow Moist	25-Jun	16-Jul	6-Aug	6	BPJ supports Interim GC of 6. Drop and dunnage only for commercial operations. Overnight use may occur with limited grazing with prior approval or with supplemental feed.
Virginia Canyon, Table Camp (98)	293868, 4211382	8924	Non-meadow	N/A	N/A	N/A	Supp. Feed only	Drop and dunnage only for commercial operations. Overnight use may occur with NO grazing. Supplemental feed only.
Virginia Canyon, Roger's Camp (99)	294855, 4212532	9147	Not evaluated Moist	25-Jun	16-Jul	6-Aug	6	BPJ supports Interim GC of 6. Drop and dunnage only for commercial operations. Overnight use may occur with limited grazing with prior approval or with supplemental feed.
Virginia Canyon, Avalanche Camp (39)	292292, 4210115	8697	Moist	25-Jun	16-Jul	6-Aug	84	BPJ supports Interim GC of 84
Virginia Canyon, Castle Camp (39)	293073, 4210529	8779	Moist	N/A	N/A	N/A	Supp. Feed only	No grazing. Sensitive resources present.

EXAMINER

**Yosemite National Park
Meadow Opening Dates and Grazing Capacities**

Watershed	Camp Name (Camp ID#)	Camp Location	Elevation (ft)	Meadow Opening Date				Grazing Capacities	Stock Use Nights Justification/Explanation
		UTME, UTMN NAD 1983 Zone 11N		Opening Date Class	Dry Year	Average Year	Wet Year		
	Babcock Lake-North (54)	289012, 4181756	8901	Moist-Wet	7-Jul	28-Jul	18-Aug	89	25% Utilization.
	Babcock Lake-South (106)	288829, 4181410	8901	Moist-Wet	7-Jul	28-Jul	18-Aug	6	BPJ supports interim GC at Average reported stock use 2004-2017.
	Buena Vista Lake-West (117)	277751, 4164581	9075	Non-meadow	N/A	N/A	N/A	Supp. Feed only.	No grazing available
	Cathedral Lake (153)	287308, 4190987	9646	Wet	15-Jul	5-Aug	26-Aug	19	BPJ supports interim GC at Average reported stock use 2004-2017. Site elevation above 9600 no wood fires.
	Doc Moyle's East (130)	295947, 4176235	9311	Wet	15-Jul	5-Aug	26-Aug	50	10% utilization. Access via off trail route greater than 1/4 mile. Group size limits 8 people, 12 head of stock.
	Doc Moyle's West (130)	295947, 4176235	9311	Wet	15-Jul	5-Aug	26-Aug	32	10% utilization. Access via off trail route greater than 1/4 mile. Group size limits 8 people, 12 head of stock.
	Echo Valley Trail Camp Admin. Site (83)	285029, 4180048	7021	Wet	15-Jul	5-Aug	26-Aug	18	BPJ supports interim GC at half the maximum reported stock use 2004-2017.
	Emeric Lake-North and West (34 and 55)	290195, 4184159 and 289811, 4183818	9350	Wet	15-Jul	5-Aug	26-Aug	114	25% Utilization.
	Empire Meadows (a.k.a. Deer Camp) (150)	267844, 4166141	6480	Wet	15-Jul	5-Aug	26-Aug	12	Site not evaluated. BPJ supports Interim GC of 12 (two strings). Wet meadows may be more resilient. No Reported Stock use.
	Illilouette Creek-East (119)	280351, 4172203	7277	Non-meadow (Moist)	25-Jun	16-Jul	6-Aug	12	Site not evaluated. BPJ supports Interim GC of 12 (two strings). Wet meadows may be more resilient. No Reported Stock use.
	Illilouette Creek-West (a.k.a. Buena Vista Creek) (30)	278398, 4172169	7011	Non-meadow (Moist)	25-Jun	26-Jul	6-Aug	12	Site not evaluated. BPJ supports Interim GC of 12 (two strings). Wet meadows may be more resilient. No Reported Stock use.
	Isberg Pass Lake-East (142)	294168, 4169621	10043	Dry	7-Jun	28-Jun	19-Jul	15	BPJ supports interim GC at Average reported stock use 2004-2017. Site elevation above 9600 no wood fires. Sensitive Resources Present
	Isberg Pass Lake-West (13)	293935, 4169374	10003	Dry	7-Jun	28-Jun	19-Jul	15	BPJ supports interim GC at Average reported stock use 2004-2017. Site elevation above 9600 no wood fires. Sensitive Resources Present

**Yosemite National Park
Meadow Opening Dates and Grazing Capacities**

Watershed	Camp Name (Camp ID#)	Camp Location	Elevation (ft)	Meadow Opening Date				Grazing Capacities	Stock Use Nights Justification/Explanation
		UTME, UTMN NAD 1983 Zone 11N		Opening Date Class	Dry Year	Average Year	Wet Year		
	Lewis Creek North & South (149)	294052, 4183079	9885	Not evaluated (Moist-Wet)	7-Jul	28-Jul	18-Aug	6	BPJ supports interium GC at Average reported stock use 2004-2017.
				Not evaluated (Moist-Wet)	7-Jul	28-Jul	18-Aug	6	BPJ supports interium GC at Average reported stock use 2004-2017.
	Long Meadow North & South (79)	286229, 4187690	9534	Moist	25-Jun	16-Jul	6-Aug	43	BPJ supports interium GC at maximum reported stock use 2004-2017.
	Lower Grant Lake (73)	276606, 4196197	9249	Non-meadow	N/A	N/A	N/A	Supp. Feed only.	No grazing available
	Lower Ottoway Trail Camp Admin. Site (107)	286450, 4169210	9678	Non-meadow (Moist-Wet)	7-Jul	28-Jul	18-Aug	6	BPJ supports interium GC at above average reported stock use 2004-2017. Limited grazing available in meadows above lake, approx 0.5 miles from site. Site elevation above 9600 no wood fires.
	Merced Lake (Cavalry) (##)	n/a		7310	Non-meadow	N/A	N/A	N/A	Supp. Feed only.
	Merced Lake Ranger Station Admin. Site (145)	288939, 4179463	7316	Moist	25-Jun	16-Jul	6-Aug	41	25% Utilization. Fen/wet meadow is excluded from grazing per the Merced River Plan (exclusion via seasonal electric fence). Understory can be grazed for administrative use only through approval.
	Sunrise Creek (Camp Many Bears) Trail Camp Admin. Site (105)	279482, 4180223	7155	Non-meadow (Moist)	25-Jun	16-Jul	6-Aug	15	BPJ supports interium GC at below average reported stock use 2004-2017. Some understory grazing available.
	Sunrise Lakes (33)	284282, 4187532	9265	Moist	25-Jun	16-Jul	6-Aug	12	BPJ supports interium GC at Average reported stock use 2004-2017.
	Triple Peak Fork North (131)	293586, 4171075	9068	Dry	7-Jun	28-Jun	19-Jul	25	25 % Utilization
	Triple Peak Fork Trail Camp Admin. Site (81)	293011, 4170542	9117	Non-meadow	N/A	N/A	N/A	Supp. Feed only.	No grazing available
	Washburn Lake (35)	291019, 4176420	7618	Moist-Wet	7-Jul	28-Jul	18-Aug	25	BPJ supports interium GC at above average reported stock use 2004-2017. Access to forest foraging areas is difficult due to severe amounts of blown down timber.

**Yosemite National Park
Meadow Opening Dates and Grazing Capacities**

Watershed	Camp Name (Camp ID#)	Camp Location	Elevation (ft)	Meadow Opening Date				Grazing Capacities	Stock Use Nights Justification/Explanation
		UTME, UTMN NAD 1983 Zone 11N		Opening Date Class	Dry Year	Average Year	Wet Year		
	Yosemite Creek (102)	274260, 4195362	8153	Non-meadow	N/A	N/A	N/A	Supp. Feed only	No grazing available.
	Buck Camp Admin. Site (141)	280072, 4160055	8150	Dry	7-Jun	28-Jun	19-Jul	84	BPJ supports interim GC at maximum reported stock use 2004-2017.
	Chilnualna Lakes (29)	276097, 4164459	8517	Non-meadow	N/A	N/A	N/A	Supp. Feed only	No Grazing Available. Sensitive resources present.
	Crescent Lake (27)	276257, 4160770	8389	Dry	7-Jun	28-Jun	19-Jul	15	25% Utilization. Sensitive resources present.
	Givens Lake (127)	282147, 4162328	8829	Wet	15-Jul	5-Aug	26-Aug	6	BPJ supports interim GC at above average reported stock use 2004-2017. Access via off trail route greater than 1/4 mile. Group size limits 8 people, 12 head of stock.
	Gravelly Ford Trail Camp (25)	283324, 4158325	7474	Non-meadow (moist)	25-Jun	16-Jul	6-Aug	12	Site not evaluated. BPJ supports Interim GC of 12 (two strings). Wet meadows may be more resilient. No Reported Stock use.
	Horsethief Canyon (120)	289034, 4165132	9399	Moist	25-Jun	16-Jul	6-Aug	51	BPJ supports interim GC above average reported stock use 2004-2017. Access via off trail route greater than 1/4 mile. Group size limits 8 people, 12 head of stock.
	Horsethief Canyon (Upper) (##)	289253, 4165676	9460	Moist-Wet	7-Jul	28-Jul	18-Aug	12	BPJ supports interim GC of 12. Access via off trail route greater than 1/4 mile. Group size limits 8 people, 12 head of stock.
	Johnson Lake (26)	277793, 4160961	8264	Wet	15-Jul	5-Aug	26-Aug	12	Site not evaluated. BPJ supports Interim GC of 12 (two strings). Wet meadows may be more resilient. No Reported Stock use.
	Lower Chain Lake-East (17 and 113)	286784, 4161180 and 286973, 4161060	8953	Moist-Wet	7-Jul	28-Jul	18-Aug	25	BPJ supports interim GC above average reported stock use 2004-2017.
	Merced Pass Lake-Upper (129)	284363, 4166994	8953	Wet	15-Jul	5-Aug	26-Aug	8	BPJ supports interim GC at Average reported stock use 2004-2017.
	Moraine Meadows (110)	286096, 4163799	8711	Wet	15-Jul	5-Aug	26-Aug	20	BPJ supports interim GC at 20. No reported Stock use
	Royal Arch Lake (116)	278884, 4161814	8694	Wet	15-Jul	5-Aug	26-Aug	7	BPJ supports interim GC at Average reported stock use 2004-2017.
	Turner Meadow (118)	270736, 4164084	7470	Wet	15-Jul	5-Aug	26-Aug	6	BPJ supports interim GC at maximum reported stock use 2004-2017.
	Beehive (4)	256205, 4208985	6555	Wet	15-Jul	5-Aug	26-Aug	40	BPJ supports interim GC at 40. No reported stock use.

**Yosemite National Park
Meadow Opening Dates and Grazing Capacities**

Watershed	Camp Name (Camp ID#)	Camp Location	Elevation (ft)	Meadow Opening Date				Grazing Capacities	Stock Use Nights Justification/Explanation
		UTME, UTMN NAD 1983 Zone 11N		Opening Date Class	Dry Year	Average Year	Wet Year		
	Benson (67)	278422, 4211075	7585	Dry-Moist	15-Jun	6-Jul	27-Jul	115	BPJ supports interim GC at Average reported stock use 2004-2017. Forage available in forested understory (~55 acres).
	Benson Lake Trail Camp Admin. Site (95)	278326, 4211181	7588	Non Meadow Moist	25-Jun	16-Jul	6-Aug	0	Meadows currently closed to grazing for resource protection. This meadow is on the south side of the Benson Lake exclusion fence. All grazing at Benson Lake should take place on the North side of the fence - see site #67 for capacity for this site.
	Boundary Lake (##)	Unknown	Unknown	Non-meadow	N/A	N/A	N/A	Supp. Feed only	No Grazing Available.
	Cold Caynon Smokey Jack (147)	288539, 4203962	8694	Moist	25-Jun	16-Jul	6-Aug	85	BPJ supports interim GC above average reported stock use 2004-2017.
	Dorothy Lake Trail Camp Admin. Site (64)	271953, 4227235	9078	Moist	25-Jun	16-Jul	6-Aug	12	Site not evaluated. BPJ supports Interim GC of 12 (two strings). Wet meadows may be more resilient. No Reported Stock use.
	Dorothy Lake East (134)	273317, 4228846	9413	Wet	15-Jul	5-Aug	26-Aug	6	25% Utilization. Limited forage area.
	Dorothy Lake Southwest (101)	272853, 4228096	9393	Moist	25-Jun	16-Jul	6-Aug	73 (57+16)	Forage area is combined for camps 100 & 101
	Dorothy Lake West (100)	272754, 4228263	9393	Moist	25-Jun	16-Jul	6-Aug		
	Dorothy Lake Peninsula Camp (144)	273011, 4228297	9409	Moist-Wet	7-Jul	28-Jul	18-Aug	12	25% Utilization.
	Glen Aulin East (32)	286867, 4198934	7802	Dry	7-Jun	28-Jun	19-Jul	29	BPJ supports interim GC at Average reported stock use 2004-2017. Limited access of stock because of blown down trees.
	Glen Aulin West (32)		7802	Moist	25-Jun	16-Jul	6-Aug	29	
	Grace Meadow (47)	270966, 4224946	8684	Moist-Wet	7-Jul	28-Jul	18-Aug	44	BPJ supports Interim GC of 44. No reported commercial use.
	Halfmoon Meadow (103)	276154, 4197235	8891	Wet	15-Jul	5-Aug	26-Aug	12	Site not evaluated. BPJ supports Interim GC of 12 (two strings). Wet meadows may be more resilient. No Reported Stock use.
	Harden Lake- East (70)	264977, 4197725	7451	Not evaluated (Moist-Wet)	7-Jul	28-Jul	18-Aug	12	Site not evaluated. BPJ supports Interim GC of 12 (two strings). Wet meadows may be more resilient. No Reported Stock use.

**Yosemite National Park
Meadow Opening Dates and Grazing Capacities**

Watershed	Camp Name (Camp ID#)	Camp Location	Elevation (ft)	Meadow Opening Date				Grazing Capacities	Stock Use Nights Justification/Explanation
		UTME, UTMN NAD 1983 Zone 11N		Opening Date Class	Dry Year	Average Year	Wet Year		
	Hook Lake-North (97)	288599, 4208154	9403	Moist	25-Jun	16-Jul	6-Aug	25	BPJ supports interium GC above average reported stock use 2004-2017. Sensitive resources present.
	Jose's Camp (88)	279740, 4215888	8980	Moist	25-Jun	16-Jul	6-Aug	46	BPJ supports interium GC above average reported stock use 2004-2017.
	Lake Vernon (9)	261086, 4211105	6568	Wet	15-Jul	5-Aug	26-Aug	Supp. Feed only	No Grazing Available. Sensitive resources present.
	Lake Vernon Cabin Admin. Site (140)	261555, 4211716	6598	Wet	15-Jul	5-Aug	26-Aug	120	BPJ supports interium GC at maxium reported stock use 2004-2017.
	Laurel Lake (45)	254542, 4209813	6509	Wet	15-Jul	5-Aug	26-Aug	8	BPJ supports interium GC at maxium reported stock use 2004-2017.
	Lower Kerrick (41)	279228, 4215118	8943	Dry	7-Jun	28-Jun	19-Jul	33	BPJ supports Interim GC of 33. No reported commercial use.
	Matterhorn Canyon-Junction Camp (76)	287996, 4210104	8468	Moist	25-Jun	16-Jul	6-Aug	155	BPJ supports interium GC above average reported stock use 2004-2017. Forage area is the same for camps 76 & 91 (stock tend to concentrate at lower regardless of where camp is).
	Matterhorn Canyon Trail Camp (91)	287259, 4209344	8438	Moist	25-Jun	16-Jul	6-Aug		
	Matterhorn Canyon North (77)	288199, 4214521	9150	Moist	25-Jun	16-Jul	6-Aug	20	BPJ supports Interim GC of 20.
	Mattie Lake (125)	285618, 4201478	9235	Wet	15-Jul	5-Aug	26-Aug	12	BPJ supports interium GC of 12. Access via off trail route greater than 1/4 mile. Group size limits 8 people, 12 head of stock.
	Miguel Cabin (3)	250340, 4205193	5020	Moist	25-Jun	16-Jul	6-Aug	12	BPJ supports interium GC at maxium reported stock use 2004-2017.
	Miller Lake North (96)	287453, 4207657	9482	Moist-Wet	7-Jul	28-Jul	18-Aug	35	BPJ supports interium GC above average reported stock use 2004-2017. Sensitive resources present.
	Miller Lake South			Moist-Wet	7-Jul	28-Jul	18-Aug	20	BPJ supports interium GC of 20. Forage area is the same for

**Yosemite National Park
Meadow Opening Dates and Grazing Capacities**

Watershed	Camp Name (Camp ID#)	Camp Location	Elevation (ft)	Meadow Opening Date				Grazing Capacities	Stock Use Nights Justification/Explanation
		UTME, UTMN NAD 1983 Zone 11N		Opening Date Class	Dry Year	Average Year	Wet Year		
	Miller Lake Southeast			Moist-Wet	7-Jul	28-Jul	18-Aug	20	south and southeast camps.
	Miwok Lake (128)	262752, 4215267	8251	Not evaluated	N/A	N/A	N/A	Supp. Feed only	No Grazing available. Access via off trail route greater than 1/4 mile. Group size limits 8 people, 12 head of stock. Access difficult because of down trees.
	Paradise Meadow Admin. Site (136)	265577, 4214417	7668	Moist	25-Jun	16-Jul	6-Aug	106	25 % Utilization
	Pate Valley (69)	271988, 4201327	4350	Moist-Wet	N/A	N/A	N/A	Supp. Feed only	High potential for spread of noxious weed.
	Pate Valley Trail Camp Admin. Site (##)	271988, 4201327	4357	Moist-Wet	N/A	N/A	N/A	Supp. Feed only	High potential for spread of noxious weed.
	Pleasant Valley (11)	274006, 4207254	6834	Wet	15-Jul	5-Aug	26-Aug	12	BPJ supports interim GC at maxium reported stock use 2004-2017.
	Rancheria Falls, New City Camp (5)	261326, 4204387	4468	Non-meadow	N/A	N/A	N/A	Supp. Feed only.	No Grazing Available. Raker Act restrctions on stock accessbilty to water.
	Rancheria Falls, LeConte Camp (7)	263995, 4203205	6243	Non-meadow	N/A	N/A	N/A	Supp. Feed only.	No Grazing Available. Raker Act restrctions on stock accessbilty to water.
	Rock Island Pass Trail Camp Admin. Site (152)	282491, 4219057	9426	Not Evaluated (Moist)	25-Jun	16-Jul	6-Aug	6	BPJ supports interim GC above average reported stock use 2004-2017. Sensitive Resources Present.
	Rodger's Lake (93)	280851, 4208435	9514	Not Evaluated (Moist)	25-Jun	16-Jul	6-Aug	6	BPJ supports interim GC above average reported stock use 2004-2017.
	Rodger's Meadow North (94)	279013, 4207358	8756	Moist	25-Jun	16-Jul	6-Aug	51	BPJ supports Interim GC of 51. No reported commercial use.
	Slide Mountain Trail Camp Admin. Site (43)	287095, 4219377	9344	Non-meadow (Moist)	25-Jun	16-Jul	6-Aug	6	BPJ supports interim GC above average reported stock use 2004-2017. Sensitive Resources Present.

**Yosemite National Park
Meadow Opening Dates and Grazing Capacities**

Watershed	Camp Name (Camp ID#)	Camp Location	Elevation (ft)	Meadow Opening Date				Grazing Capacities	Stock Use Nights Justification/Explanation
		UTME, UTMN NAD 1983 Zone 11N		Opening Date Class	Dry Year	Average Year	Wet Year		
	Smedberg Lake South (92)	282181, 4210051	9239	Moist	25-Jun	16-Jul	6-Aug	52	BPJ supports interim GC at Average reported stock use 2004-2017.
	Smedberg Lake Southeast (40)	282166, 4210135	9272	Moist	25-Jun	16-Jul	6-Aug		
	Smedberg Lake Trail Camp Admin. Site (146)	281940, 4210464	9239	Not evaluated	N/A	N/A	N/A	Supp. Feed only.	Limited forage available; too close to lakeshore.
	Smith Meadow (1)	257822, 4200809	6440	Dry-Moist	15-Jun	6-Jul	27-Jul	33	BPJ supports Interim GC of 51.
	Stubblefield Trail Camp Admin. Site (66)	272718, 4215607	7753	Non-meadow (Moist)	25-Jun	16-Jul	6-Aug	6	BPJ supports interim GC at Average reported stock use 2004-2017.
	Ten Lakes East (75)	279561, 4197828	9550	Non-meadow	N/A	N/A	N/A	Supp. Feed only	No forage available. No reported stock use.
	Tilden Lake North (46)	271168, 4220005	8901	Moist	25-Jun	16-Jul	6-Aug	40	BPJ supports Interim GC of 40.
	Tilden Lake Northeast (46)		8904	Moist	25-Jun	16-Jul	6-Aug	32	BPJ supports Interim GC of 32. This meadow is approximately 3 miles from an NPS trail. Free range grazing can occur this distance from established trails, but all other services and riding of stock by commercial operations is prohibited beyond 1/4 mile from NPS trail unless otherwise approved.
	Tilden Lake-Southeast (85)	271356, 4219697	8917	Moist	25-Jun	16-Jul	6-Aug	24	BPJ supports Interim GC of 24.
	Tilden Lake-Southwest (85)	270340, 4219545	8917	Moist	25-Jun	16-Jul	6-Aug	24	BPJ supports Interim GC of 24.
	Tilden Lake-Northwest (86)	270340, 4219545	8901	Moist	25-Jun	16-Jul	6-Aug	8	GC based on best professional judgement. Monitor and adjust if use approaches recommended level.
	Tiltill Valley Trail Camp Admin. Site (6)	263072, 4206753	5636	Wet	15-Jul	5-Aug	26-Aug	90	BPJ supports interim GC at maximum reported stock use 2004-2017.
Tim's Camp North Admin. Site (132)	267126, 4215728	7710	Moist	25-Jun	16-Jul	6-Aug	51	25% Utilization	

**Yosemite National Park
Meadow Opening Dates and Grazing Capacities**

Watershed	Camp Name (Camp ID#)	Camp Location	Elevation (ft)	Meadow Opening Date				Grazing Capacities	Stock Use Nights Justification/Explanation
		UTME, UTMN NAD 1983 Zone 11N		Opening Date Class	Dry Year	Average Year	Wet Year		
	Tim's Camp South Admin. Site (132)	(,)	7710	Wet	25-Jun	16-Jul	6-Aug	59	25% Utilization
	Twin Lakes North (48)	266672, 4224646	8934	Moist-Wet	7-Jul	28-Jul	18-Aug	36	25% Utilization.
	Twin Lakes South (49)	267462, 4224256	8930	Moist-Wet	7-Jul	28-Jul	18-Aug		
	Kerrick Canyon Middle (87 and 89)	274240 281120, 4213994 4219469	9160	Moist	25-Jun	16-Jul	6-Aug	50	BPJ supports Interim GC of 50. Sensitive Resources Present.
	Kerrick, Upper Meadow - North (90)	282346, 4222292	9396	Moist-Wet	7-Jul	8-Aug	18-Aug	49	BPJ supports Interim GC of 49. Sensitive resources present. Stock confined to trail in closed areas. When meadows are closed to grazing stock must be fed with supplemental feed in designated holding areas. When meadows are open to grazing special conditions apply (see park compendium or CUA permit for additional details.
	Kerrick, Upper Meadow - South (138)	282514, 4220757	9317	Moist-Wet	7-Jul	28-Jul	18-Aug	42	BPJ supports Interim GC of 42. Sensitive resources present. Stock confined to trail in closed areas. When meadows are closed to grazing stock must be fed with supplemental feed in designated holding areas. When meadows are open to grazing special conditions apply (see park compendium or CUA permit for additional details.
	Upper Lyell Rock Camp (60)	300835, 4186326	8980	Moist	25-Jun	16-Jul	6-Aug	61	25% Utilization. BPJ supports Interim GC of 61.
	Upper Lyell Peninsula Camp (124)	300870, 4186032	8973	Wet	15-Jul	25-Aug	26-Aug	188	25% Utilization. BPJ supports Interim GC of 188.
	Wilma Lake East (65)	268000, 4217312	7959	Moist-Wet	7-Jul	28-Jul	18-Aug	51	BPJ supports Interim GC of 51.
	Virginia Canyon, Junction Camp (37)	294876, 4213601	9327	Non-meadow Moist	25-Jun	16-Jul	6-Aug	6	BPJ supports Interim GC of 6. Drop and dunnage only for commercial operations. Overnight use may occur with limited grazing with prior approval or with supplemental feed.

**Yosemite National Park
Meadow Opening Dates and Grazing Capacities**

Watershed	Camp Name (Camp ID#)	Camp Location	Elevation (ft)	Meadow Opening Date				Grazing Capacities	Stock Use Nights Justification/Explanation
		UTME, UTMN NAD 1983 Zone 11N		Opening Date Class	Dry Year	Average Year	Wet Year		
	Virginia Canyon, Table Camp (98)	293868, 4211382	8924	Non-meadow	N/A	N/A	N/A	Supp. Feed only	Drop and dunnage only for commercial operations. Overnight use may occur with NO grazing. Supplemental feed only.
	Virginia Canyon, Roger's Camp (99)	294855, 4212532	9147	Not evaluted Moist	25-Jun	16-Jul	6-Aug	6	BPJ supports Interim GC of 6. Drop and dunnage only for commercial operations. Overnight use may occur with limited grazing with prior approval or with supplemental feed.
	Virginia Canyon, Avalanche Camp (39)	292292, 4210115	8697	Moist	25-Jun	16-Jul	6-Aug	84	BPJ supports Interim GC of 84
	Virginia Canyon, Castle Camp (39)	293073, 4210529	8779	Moist	N/A	N/A	N/A	Supp. Feed only	No grazing. Sensitive resources present.

Yosemite National Park – Meadow Opening Dates & Grazing Capacities

In an effort to improve our wilderness stewardship plan we will be taking the opportunity over the next few years to evaluate many of the best management practices offered in our draft pack stock appendix through the Commercial Use Authorization permitting process. This effort will allow us to better inform our draft management document(s). During this time we would like you to provide us feedback while we continue to develop the pack stock management plan and a monitoring program that will best protect and enhance park resources that support pack stock use in the park.

Last year we addressed meadow opening dates given the extraordinary snow pack because of the potential impacts that could have occurred. It offered a great opportunity for feedback and dialog. In an effort to continue that relationship this year we are providing you a slightly modified version of appendix C from the pack stock framework. It provides a more comprehensive list of park meadows with proposed meadow opening dates and grazing capacities

Generally our preferred choice for grazing capacities was at 25% utilization. Through our Best Professional Judgement (BPJ) we made some adjustments and gave a brief justification/explanation. We have also made minor adjustments to Meadow Opening Date (MOD) classes based on field observations. We have included a short list of Acronyms that we have used in the table.

In the table provided in your CUA permit MOD's are expressed in terms of soil moisture in lieu of date classes (early/late). Meadow opening dates can vary 2-4 weeks from dry to average years and from average to wet years. *(This table reflects 3 week differences in opening dates between water years.)* Water year classifications are based on the snow packs water equivalency measured during April's snow survey each year (Results posted in May).

Meadow Opening date Class	*Dry Year	Avg. Year	Wet Year
Early=Dry	June 7	Jun 28	July 19
Early/Mid=Dry/Moist	June 15	July 6	July 27
Mid=Moist	June 25	July 16	Aug 6
Early Late=moist/wet	July 7	July 28	Aug 18
Late=wet	July 15	Aug 5	Aug 26

* Modest start dates; pack stock framework calls for MOD's for Early=Mid June, Mid=Mid July, Late-Early August

BPJ Best Professional Judgment (BPJ) takes into account meadow size, observed condition, known use patterns, ecological attributes, and forage attributes.

MOD Meadow Opening Date

GC Grazing Capacity. GC will be monitored and adjusted as use approaches recommended levels.

SUN Expresses the number of overnight stays by a single head of stock at a given site. Example 12 SUN reported for a site conveys that a site had been utilized by 12 animals for one night. **BPJ** Best Professional Judgment takes into account meadow size, observed condition, known use patterns, ecological and forage attributes.