



Welcome

TO THE PUBLIC SCOPING MEETING FOR THE

BIG OAK FLAT VISITOR CONTACT STATION AND EMERGENCY
SERVICES FACILITIES ENVIRONMENTAL ASSESSMENT

Please sign in



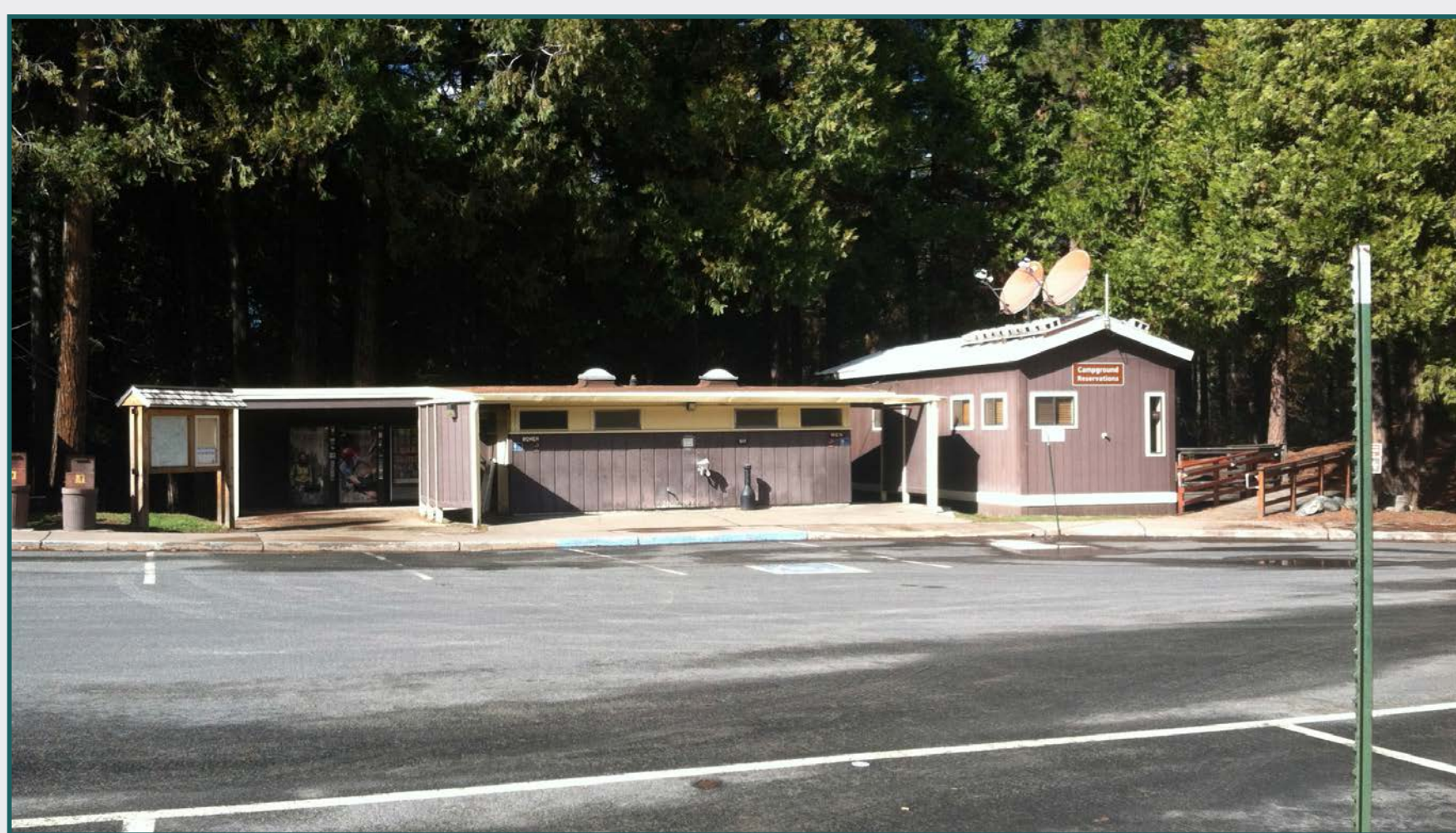


Purpose and Need

Big Oak Flat is one of four entrances to Yosemite National Park and is an important arrival point for more than one million visitors entering the park each year from the west. The Big Oak Flat Visitor Contact Station serves over 50,000 visitors annually and includes two main buildings and a comfort station (public restroom).

The purpose of the action is to replace the existing visitor contact station complex entrance to enhance the visitor experience and improve operational efficiency for existing park programs including:

- » Visitor information
- » Campground reservations
- » Wilderness permit services
- » Bear canister rentals
- » Sales
- » Office and operational space for the Mather District Office emergency services

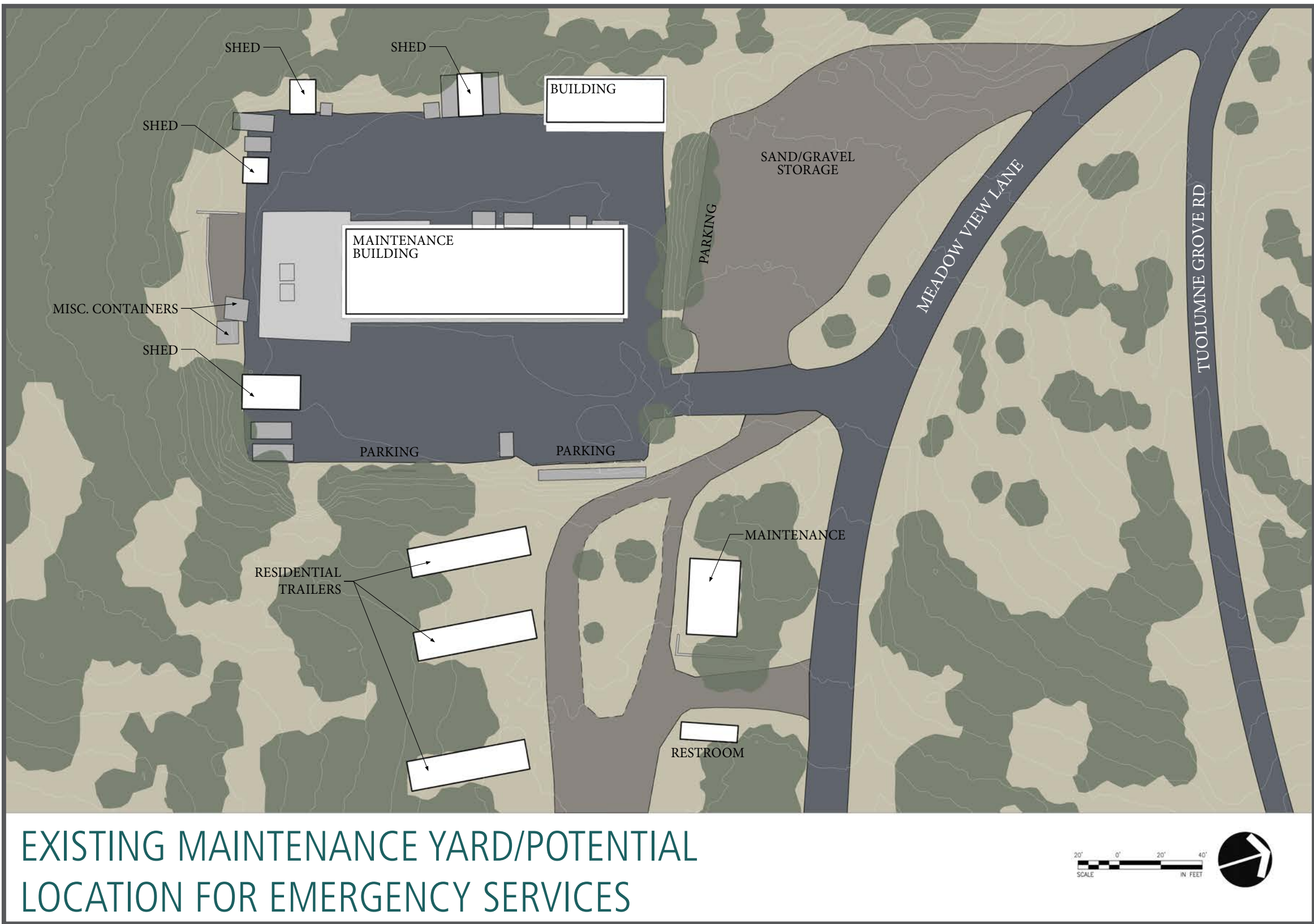
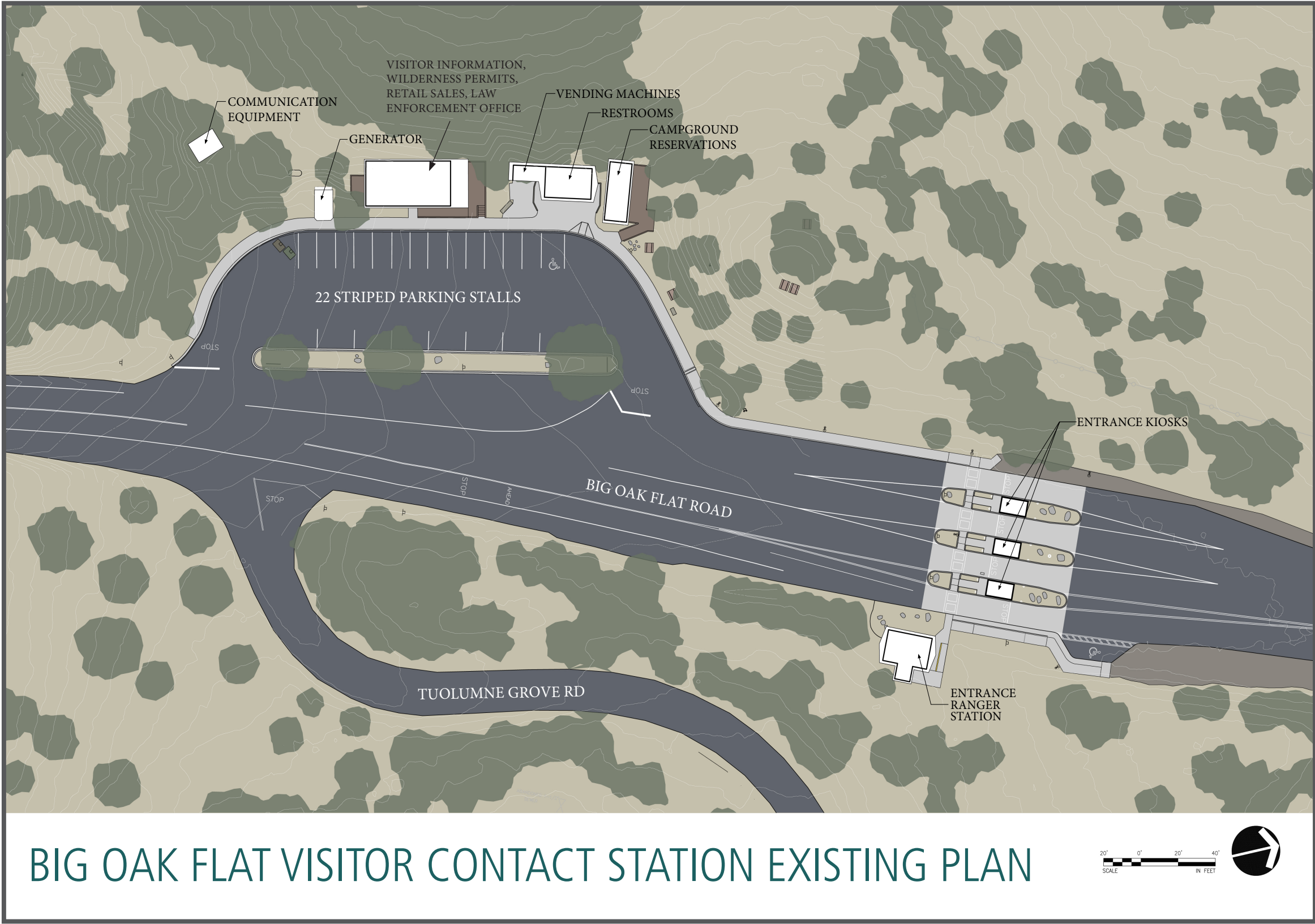
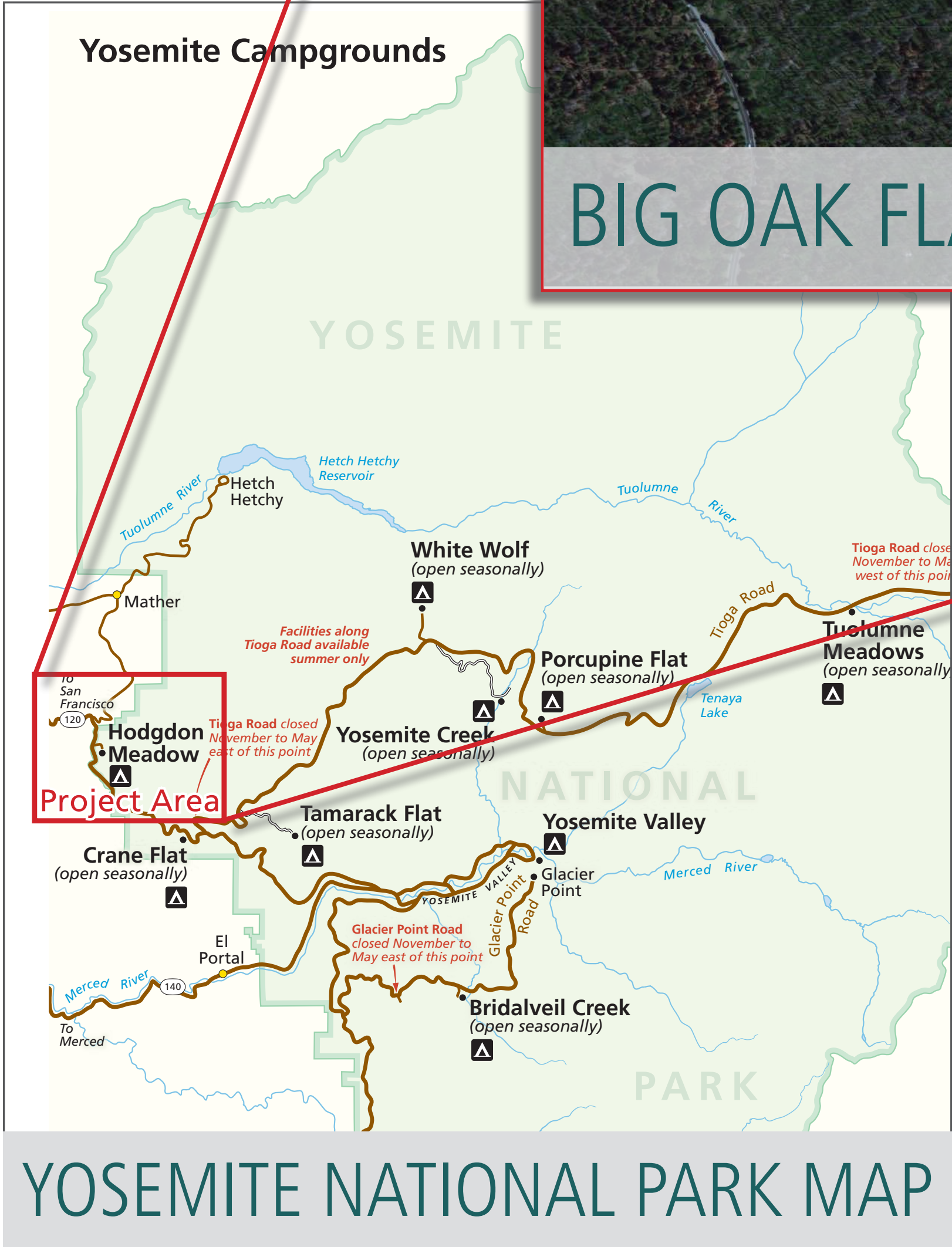
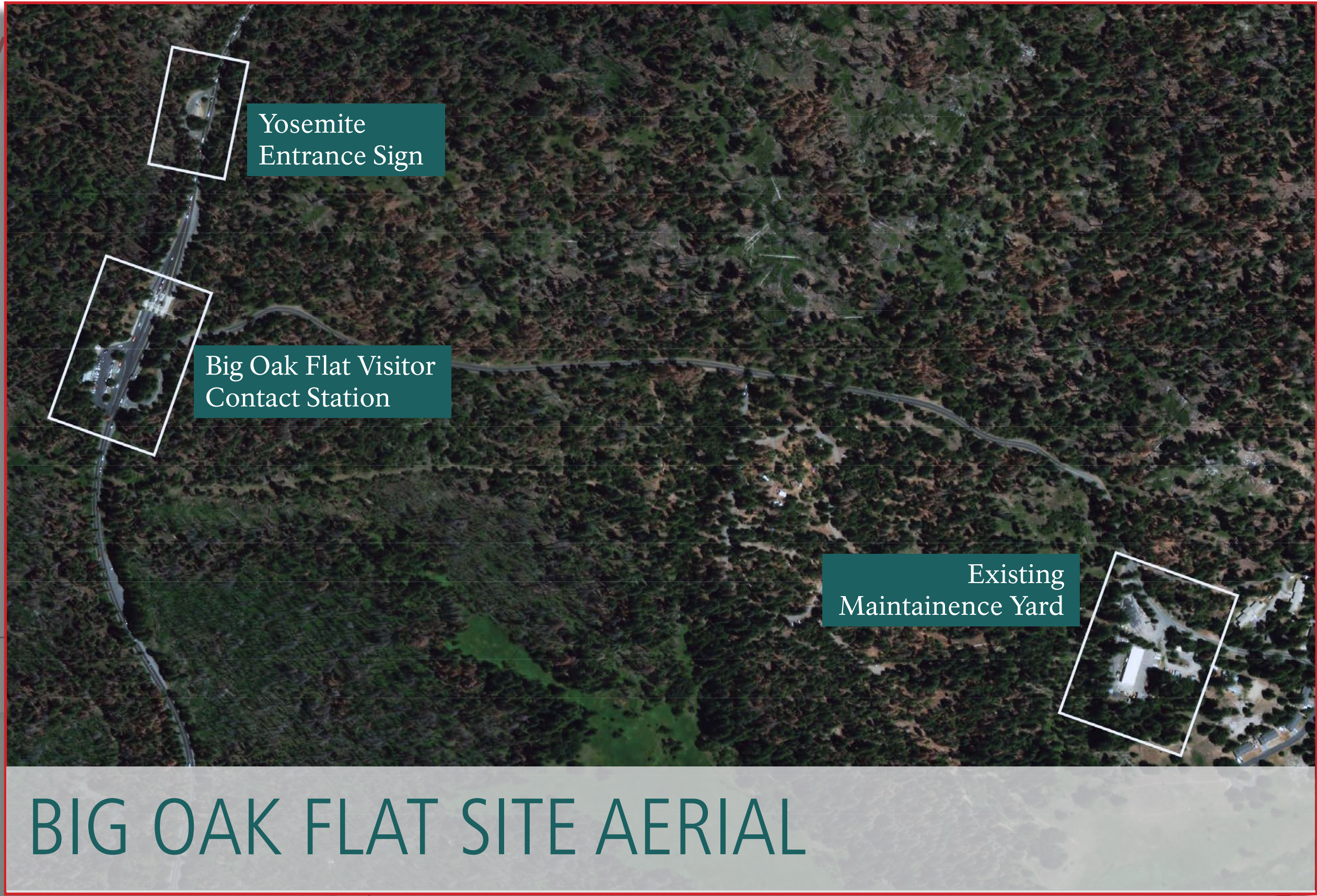


Action is needed because the existing contact station does not meet visitor demands, and NPS staff struggle to provide quality public service due to inadequately sized and ineffectively organized facilities. Space restrictions strain the delivery of emergency, informational, and interpretive services to the public, and aging utility systems require a high level of maintenance.





Project Area





Preliminary Alternative Options

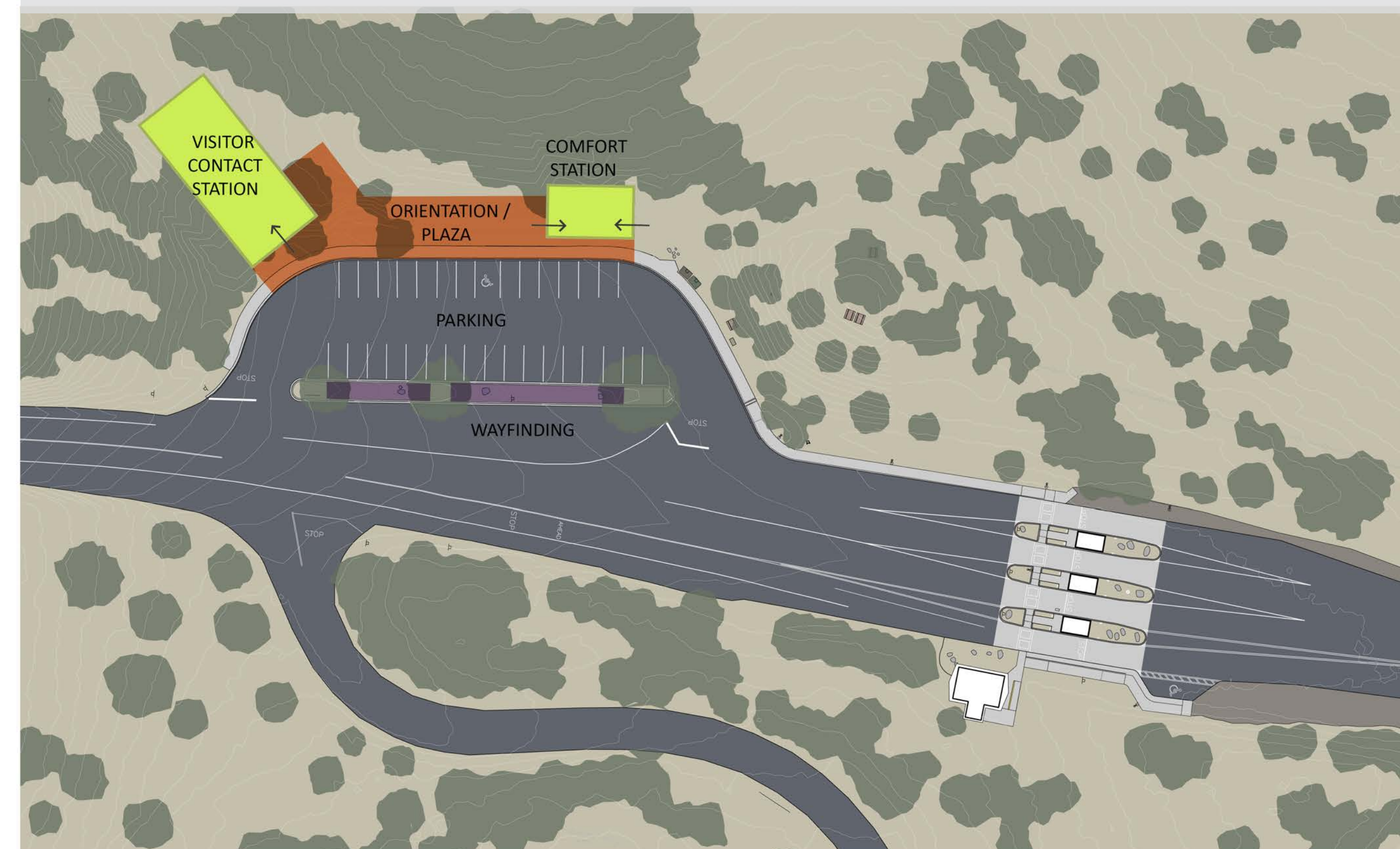
Proposed Visitor Contact Station

VISITOR CONTACT STATION / OPTION 1



- Total of approximately 2,200-2,500 SF
- Maintains similar layout, with an interpretive plaza between the comfort station and retail space
- All core functions occur in one building

VISITOR CONTACT STATION / OPTION 2



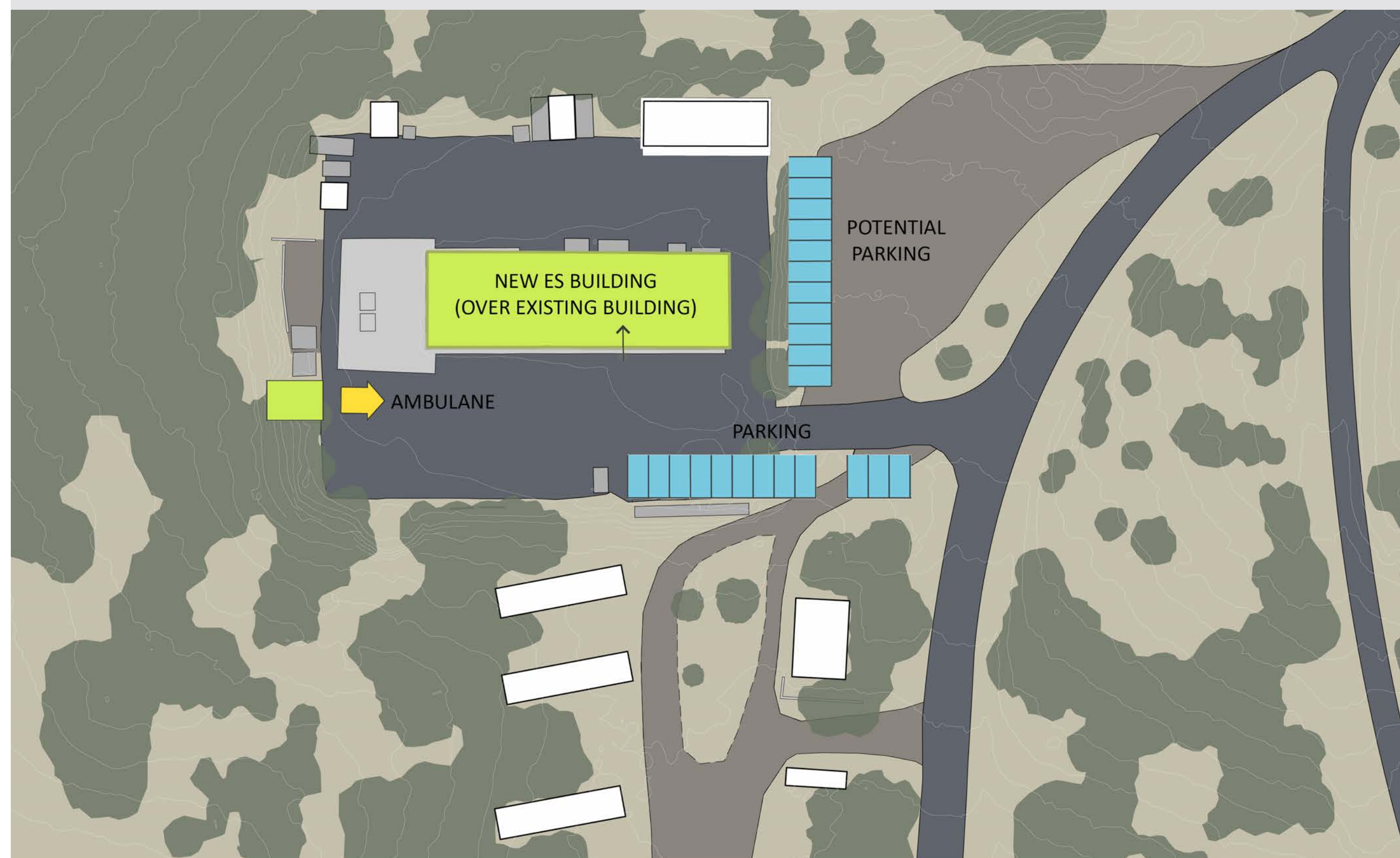
- Total of approximately 2,200-2,500 SF
- Combines all core functions in one building
- Shifts the building on the site to provide a larger outdoor plaza and orientation space



Preliminary Alternative Options

Proposed Emergency Services Facility

EMERGENCY SERVICES / OPTION 1



- Total of approximately 3,000-4,000 SF
- Builds additional space vertically on top of the existing maintenance building
- Includes training/meeting room, second ambulance bay, fitness and locker rooms
- Existing ambulance bay retained as a separate building

EMERGENCY SERVICES / OPTION 2



- Total of approximately 3,000-4,000 SF
- Expands the existing footprint of the ambulance bay to include training/meeting room, second ambulance bay, fitness and locker rooms
- No changes to existing maintenance building



Existing Conditions

The utility systems at the visitor contact station are beyond their expected life and need upgrades or replacement to continue to be reliable and functional. Outdoor lighting is insufficient for safety at night.

COMMUNICATION EQUIPMENT

GENERATOR

VISITOR INFORMATION, WILDERNESS PERMITS, RETAIL SALES, LAW ENFORCEMENT OFFICE

VENDING MACHINES

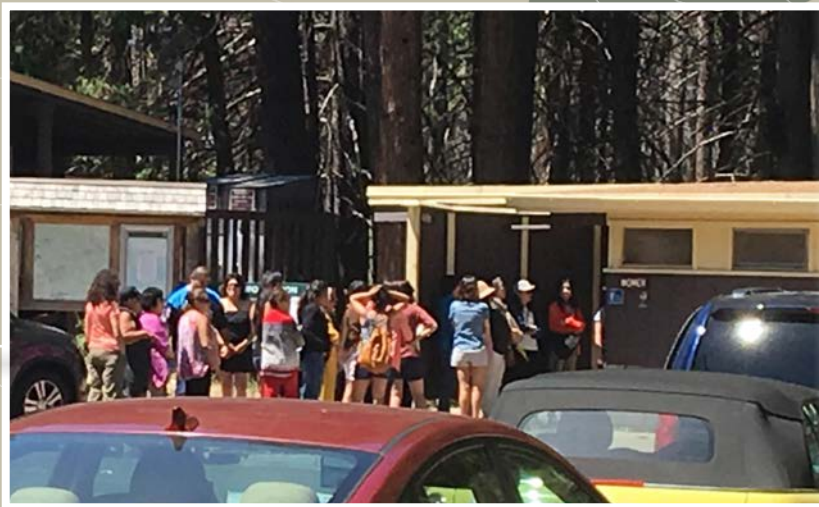
RESTROOMS

CAMPGROUND RESERVATIONS

22 STRIPED PARKING STALLS



The existing visitor contact station is not adequately sized or organized to effectively serve the volume of visitors arriving through this park entrance. This negatively impacts visitor experience and park operations.



The comfort station is undersized (three stalls for each gender), causing long lines, and its leach field is at the end of its useful life, causing malfunctions and unpleasant odors.



Motorists face insufficient parking during periods of heavy visitation, causing unsafe conditions (e.g. double parking, blocking of NPS vehicles, road obstruction, hazardous pedestrian crossing). Additionally, parking is inadequate for large vehicles, such as recreational vehicles and busses, which often block parking areas and the road.



The current layout of the contact station is confusing, which contributes to visitor congestion and operational inefficiency. The services provided are disjunct from one another, located in separate buildings with many awkwardly compartmentalized spaces (decks) that sever circulation. Visitors often wait in long lines for services, only to discover they are in the wrong line.



Resource Issues

Issues can be problems, concerns, conflicts, obstacles, or benefits that would result from a proposed action, or can also be problems that would be perpetuated by taking no action. Impact topics are a means of organizing the discussion of issues and analysis of impacts. Impact topics can be thought of as 'headings' used in the NEPA document that represent a resource or element of the human environment. The environmental analysis will focus on the more critical issues and briefly discuss but dismiss other less significant issues. Issues and impact topics for this proposed action could include:

ISSUE

If no action is taken, the Visitor Contact Station and Emergency Services facilities would remain as-is with no improvements to utilities, visitor orientation and information space, law enforcement offices, bathroom capacity, or parking.

IMPACT TOPICS

Impact topics that could result from this issue may include visitor use and experience.

ISSUE

The development of new Visitor Contact Station and Emergency Services facilities could impact land outside of the existing development footprint. This disturbance could include trenching, tree removal, earthmoving activities, and use of heavy equipment.

IMPACT TOPICS

Impact topics that could result from this issue may include soils, cultural resources, vegetation, and wildlife.

ISSUE

The development of new Visitor Contact Station and Emergency Services facilities would improve visitor experience by providing an appropriately sized comfort station, clear wayfinding, and optimized space for park staff to provide public services, such as interpretation, wilderness permits, camping information, bear canister rentals, and retail sales. A restriped parking area with additional spaces may reduce existing pedestrian/vehicle conflicts and decrease congestion.

IMPACT TOPICS

Impact topics that could result from this issue may include visitor use and experience, park operations and management.

ISSUE

The relocation of the Emergency Services facilities to Hodgdon Meadows NPS Maintenance Area would provide additional space for law enforcement personnel, a clear egress path for the ambulance, additional space for Mather District rangers to complete necessary office work as well as meeting and training space, and additional space at the new Visitor Contact Station for park staff to provide guidance and information to visitors.

IMPACT TOPICS

Impact topics that could result from this issue may include park operations and management visitor use and experience, and historic properties.



Schedule

The National Environmental Policy Act requires federal agencies to involve the public when making decisions that may impact the natural, cultural, and socioeconomic environment. The park is coordinating National Historic Preservation Act compliance with the NEPA process. Yosemite National Park will analyze the environmental impacts of alternatives to address the purpose and need.

This public scoping meeting is the beginning of the public involvement process. The park is looking for public input on the range of alternatives, issues, and impact topics for inclusion in the environmental assessment.

TIMELINE

SPRING / SUMMER 2018	Public Scoping Period (May 4, 2018 - June 4, 2018)
SUMMER / FALL 2018	Development of the Environmental Assessment
WINTER 2018 / 2019	Environmental Assessment Public Comment Period
EARLY 2019	Decision Document

HOW TO COMMENT

- 1 Submit comments electronically at:
<http://parkplanning.nps.gov/BigOakFlatEntrance>
- 2 Mail or hand deliver comments to:
Superintendent
Yosemite National Park
Attn: Big Oak Flat Entrance EA
P.O. Box 577
Yosemite, CA 95389
- 3 Submit written comments in-person at this meeting

ALL COMMENTS MUST BE SUBMITTED BY
JUNE 4, 2018